

District I  
1625 N. French Dr., Hobbs, NM 88240  
District II  
811 S. First St., Artesia, NM 88210  
District III  
1000 Rio Brazos Road, Aztec, NM 87410  
District IV  
1220 S. St. Francis Dr., Santa Fe, NM 87505

State of New Mexico  
Energy Minerals and Natural Resources  
Department  
Oil Conservation Division  
1220 South St. Francis Dr.  
Santa Fe, NM 87505

Form C-144  
Revised April 3, 2017

**For temporary pits, below-grade tanks, and multi-well fluid management pits**, submit to the appropriate NMOC District Office.  
**For permanent pits** submit to the Santa Fe Environmental Bureau office and provide a copy to the appropriate NMOC District Office.

Pit, Below-Grade Tank, or  
Proposed Alternative Method Permit or Closure Plan Application

Type of action: ☐ Below grade tank registration  
☐ Permit of a pit or proposed alternative method  
☒ Closure of a pit, below-grade tank, or proposed alternative method  
**BGT1** ☐ Modification to an existing permit/or registration  
☐ Closure plan only submitted for an existing permitted or non-permitted pit, below-grade tank, or proposed alternative method

**Instructions: Please submit one application (Form C-144) per individual pit, below-grade tank or alternative request**

Please be advised that approval of this request does not relieve the operator of liability should operations result in pollution of surface water, ground water or the environment. Nor does approval relieve the operator of its responsibility to comply with any other applicable governmental authority's rules, regulations or ordinances.

1.  
Operator: Simcoe, LLC OGRID #: 329736  
Address: 1199 Main Ave., Suite 101, Durango, CO 81301  
Facility or well name: ATLANTIC B LS #013  
API Number: 30-045-20856 OCD Permit Number: \_\_\_\_\_  
U/L or Qtr/Qtr I Section 5 Township 30N Range 10W County: San Juan  
Center of Proposed Design: Latitude 36.83786053 Longitude -107.9003181 NAD83  
Surface Owner: ☒ Federal ☐ State ☐ Private ☐ Tribal Trust or Indian Allotment

2.  
☐ **Pit:** Subsection F, G or J of 19.15.17.11 NMAC  
Temporary: ☐ Drilling ☐ Workover  
☐ Permanent ☐ Emergency ☐ Cavitation ☐ P&A ☐ Multi-Well Fluid Management Low Chloride Drilling Fluid ☐ yes ☐ no  
☐ Lined ☐ Unlined Liner type: Thickness \_\_\_\_\_ mil ☐ LLDPE ☐ HDPE ☐ PVC ☐ Other \_\_\_\_\_  
☐ String-Reinforced  
Liner Seams: ☐ Welded ☐ Factory ☐ Other \_\_\_\_\_ Volume: \_\_\_\_\_ bbl Dimensions: L \_\_\_\_\_ x W \_\_\_\_\_ x D \_\_\_\_\_

3.  
☒ **Below-grade tank:** Subsection I of 19.15.17.11 NMAC Tank ID: A  
Volume: 45 bbl Type of fluid: Produced Water  
Tank Construction material: Steel  
☐ Secondary containment with leak detection ☐ Visible sidewalls, liner, 6-inch lift and automatic overflow shut-off  
☐ Visible sidewalls and liner ☒ Visible sidewalls only ☐ Other single-walled double-bottomed  
Liner type: Thickness \_\_\_\_\_ mil ☐ HDPE ☐ PVC ☐ Other \_\_\_\_\_

4.  
☐ **Alternative Method:**  
Submittal of an exception request is required. Exceptions must be submitted to the Santa Fe Environmental Bureau office for consideration of approval.

5.  
**Fencing:** Subsection D of 19.15.17.11 NMAC (*Applies to permanent pits, temporary pits, and below-grade tanks*)  
☐ Chain link, six feet in height, two strands of barbed wire at top (*Required if located within 1000 feet of a permanent residence, school, hospital, institution or church*)  
☐ Four foot height, four strands of barbed wire evenly spaced between one and four feet  
☐ Alternate. Please specify \_\_\_\_\_

6.

**Netting:** Subsection E of 19.15.17.11 NMAC (*Applies to permanent pits and permanent open top tanks*)

- ☐ Screen ☐ Netting ☐ Other \_\_\_\_\_
- ☐ Monthly inspections (If netting or screening is not physically feasible)

7.

**Signs:** Subsection C of 19.15.17.11 NMAC

- ☐ 12"x 24", 2" lettering, providing Operator's name, site location, and emergency telephone numbers
- ☐ Signed in compliance with 19.15.16.8 NMAC

8.

**Variances and Exceptions:**

Justifications and/or demonstrations of equivalency are required. Please refer to 19.15.17 NMAC for guidance.

***Please check a box if one or more of the following is requested, if not leave blank:***

- ☐ Variance(s): Requests must be submitted to the appropriate division district for consideration of approval.
- ☐ Exception(s): Requests must be submitted to the Santa Fe Environmental Bureau office for consideration of approval.

9.

**Siting Criteria (regarding permitting):** 19.15.17.10 NMAC***Instructions: The applicant must demonstrate compliance for each siting criteria below in the application. Recommendations of acceptable source material are provided below. Siting criteria does not apply to drying pads or above-grade tanks.*****General siting****Ground water is less than 25 feet below the bottom of a low chloride temporary pit or below-grade tank.**

- ☐ NM Office of the State Engineer - iWATERS database search; ☐ USGS; ☐ Data obtained from nearby wells

☐ Yes ☐ No  
☐ NA

**Ground water is less than 50 feet below the bottom of a Temporary pit, permanent pit, or Multi-Well Fluid Management pit.**

NM Office of the State Engineer - iWATERS database search; USGS; Data obtained from nearby wells

☐ Yes ☐ No  
☐ NA

Within incorporated municipal boundaries or within a defined municipal fresh water well field covered under a municipal ordinance adopted pursuant to NMSA 1978, Section 3-27-3, as amended. **(Does not apply to below grade tanks)**

- Written confirmation or verification from the municipality; Written approval obtained from the municipality

☐ Yes ☐ No

Within the area overlying a subsurface mine. **(Does not apply to below grade tanks)**

- Written confirmation or verification or map from the NM EMNRD-Mining and Mineral Division

☐ Yes ☐ No

Within an unstable area. **(Does not apply to below grade tanks)**

- Engineering measures incorporated into the design; NM Bureau of Geology & Mineral Resources; USGS; NM Geological Society; Topographic map

☐ Yes ☐ No

Within a 100-year floodplain. **(Does not apply to below grade tanks)**

- FEMA map

☐ Yes ☐ No

**Below Grade Tanks**

Within 100 feet of a continuously flowing watercourse, significant watercourse, lake bed, sinkhole, wetland or playa lake (measured from the ordinary high-water mark).

- Topographic map; Visual inspection (certification) of the proposed site

☐ Yes ☐ No

Within 200 horizontal feet of a spring or a fresh water well used for public or livestock consumption;.

- NM Office of the State Engineer - iWATERS database search; Visual inspection (certification) of the proposed site

☐ Yes ☐ No

**Temporary Pit using Low Chloride Drilling Fluid** (maximum chloride content 15,000 mg/liter)

Within 100 feet of a continuously flowing watercourse, or any other significant watercourse or within 200 feet of any lakebed, sinkhole, or playa lake (measured from the ordinary high-water mark). (Applies to low chloride temporary pits.)

- Topographic map; Visual inspection (certification) of the proposed site

☐ Yes ☐ No

Within 300 feet from a occupied permanent residence, school, hospital, institution, or church in existence at the time of initial application.

- Visual inspection (certification) of the proposed site; Aerial photo; Satellite image

☐ Yes ☐ No

Within 200 horizontal feet of a spring or a private, domestic fresh water well used by less than five households for domestic or stock watering purposes, or 300feet of any other fresh water well or spring, in existence at the time of the initial application.

NM Office of the State Engineer - iWATERS database search; Visual inspection (certification) of the proposed site

☐ Yes ☐ No

Within 100 feet of a wetland.

- US Fish and Wildlife Wetland Identification map; Topographic map; Visual inspection (certification) of the proposed site

☐ Yes ☐ No

### **Temporary Pit Non-low chloride drilling fluid**

Within 300 feet of a continuously flowing watercourse, or any other significant watercourse, or within 200 feet of any lakebed, sinkhole, or playa lake (measured from the ordinary high-water mark).

- Topographic map; Visual inspection (certification) of the proposed site

☐ Yes ☐ No

Within 300 feet from a permanent residence, school, hospital, institution, or church in existence at the time of initial application.

- Visual inspection (certification) of the proposed site; Aerial photo; Satellite image

☐ Yes ☐ No

Within 500 horizontal feet of a spring or a private, domestic fresh water well used by less than five households for domestic or stock watering purposes, or 1000 feet of any other fresh water well or spring, in the existence at the time of the initial application;

- NM Office of the State Engineer - iWATERS database search; Visual inspection (certification) of the proposed site

☐ Yes ☐ No

Within 300 feet of a wetland.

- US Fish and Wildlife Wetland Identification map; Topographic map; Visual inspection (certification) of the proposed site

☐ Yes ☐ No

### **Permanent Pit or Multi-Well Fluid Management Pit**

Within 300 feet of a continuously flowing watercourse, or 200 feet of any other significant watercourse, or lakebed, sinkhole, or playa lake (measured from the ordinary high-water mark).

- Topographic map; Visual inspection (certification) of the proposed site

☐ Yes ☐ No

Within 1000 feet from a permanent residence, school, hospital, institution, or church in existence at the time of initial application.

- Visual inspection (certification) of the proposed site; Aerial photo; Satellite image

☐ Yes ☐ No

Within 500 horizontal feet of a spring or a fresh water well used for domestic or stock watering purposes, in existence at the time of initial application.

- NM Office of the State Engineer - iWATERS database search; Visual inspection (certification) of the proposed site

☐ Yes ☐ No

Within 500 feet of a wetland.

- US Fish and Wildlife Wetland Identification map; Topographic map; Visual inspection (certification) of the proposed site

☐ Yes ☐ No

10.

#### **Temporary Pits, Emergency Pits, and Below-grade Tanks Permit Application Attachment Checklist:** Subsection B of 19.15.17.9 NMAC

**Instructions:** Each of the following items must be attached to the application. Please indicate, by a check mark in the box, that the documents are attached.

- ☐ Hydrogeologic Report (Below-grade Tanks) - based upon the requirements of Paragraph (4) of Subsection B of 19.15.17.9 NMAC
- ☐ Hydrogeologic Data (Temporary and Emergency Pits) - based upon the requirements of Paragraph (2) of Subsection B of 19.15.17.9 NMAC
- ☐ Siting Criteria Compliance Demonstrations - based upon the appropriate requirements of 19.15.17.10 NMAC
- ☐ Design Plan - based upon the appropriate requirements of 19.15.17.11 NMAC
- ☐ Operating and Maintenance Plan - based upon the appropriate requirements of 19.15.17.12 NMAC
- ☐ Closure Plan (Please complete Boxes 14 through 18, if applicable) - based upon the appropriate requirements of Subsection C of 19.15.17.9 NMAC and 19.15.17.13 NMAC

☐ Previously Approved Design (attach copy of design) API Number: \_\_\_\_\_ or Permit Number: \_\_\_\_\_

11.

#### **Multi-Well Fluid Management Pit Checklist:** Subsection B of 19.15.17.9 NMAC

**Instructions:** Each of the following items must be attached to the application. Please indicate, by a check mark in the box, that the documents are attached.

- ☐ Design Plan - based upon the appropriate requirements of 19.15.17.11 NMAC
- ☐ Operating and Maintenance Plan - based upon the appropriate requirements of 19.15.17.12 NMAC
- ☐ A List of wells with approved application for permit to drill associated with the pit.
- ☐ Closure Plan (Please complete Boxes 14 through 18, if applicable) - based upon the appropriate requirements of Subsection C of 19.15.17.9 NMAC and 19.15.17.13 NMAC
- ☐ Hydrogeologic Data - based upon the requirements of Paragraph (4) of Subsection B of 19.15.17.9 NMAC
- ☐ Siting Criteria Compliance Demonstrations - based upon the appropriate requirements of 19.15.17.10 NMAC

☐ Previously Approved Design (attach copy of design) API Number: \_\_\_\_\_ or Permit Number: \_\_\_\_\_

12.

**Permanent Pits Permit Application Checklist:** Subsection B of 19.15.17.9 NMAC

**Instructions:** Each of the following items must be attached to the application. Please indicate, by a check mark in the box, that the documents are attached.

- ☐ Hydrogeologic Report - based upon the requirements of Paragraph (1) of Subsection B of 19.15.17.9 NMAC  
☐ Siting Criteria Compliance Demonstrations - based upon the appropriate requirements of 19.15.17.10 NMAC  
☐ Climatological Factors Assessment  
☐ Certified Engineering Design Plans - based upon the appropriate requirements of 19.15.17.11 NMAC  
☐ Dike Protection and Structural Integrity Design - based upon the appropriate requirements of 19.15.17.11 NMAC  
☐ Leak Detection Design - based upon the appropriate requirements of 19.15.17.11 NMAC  
☐ Liner Specifications and Compatibility Assessment - based upon the appropriate requirements of 19.15.17.11 NMAC  
☐ Quality Control/Quality Assurance Construction and Installation Plan  
☐ Operating and Maintenance Plan - based upon the appropriate requirements of 19.15.17.12 NMAC  
☐ Freeboard and Overtopping Prevention Plan - based upon the appropriate requirements of 19.15.17.11 NMAC  
☐ Nuisance or Hazardous Odors, including H<sub>2</sub>S, Prevention Plan  
☐ Emergency Response Plan  
☐ Oil Field Waste Stream Characterization  
☐ Monitoring and Inspection Plan  
☐ Erosion Control Plan  
☐ Closure Plan - based upon the appropriate requirements of Subsection C of 19.15.17.9 NMAC and 19.15.17.13 NMAC

13.

**Proposed Closure:** 19.15.17.13 NMAC

**Instructions:** Please complete the applicable boxes, Boxes 14 through 18, in regards to the proposed closure plan.

- Type: ☐ Drilling ☐ Workover ☐ Emergency ☐ Cavitation ☐ P&A ☐ Permanent Pit ☐ Below-grade Tank ☐ Multi-well Fluid Management Pit  
☐ Alternative
- Proposed Closure Method: ☐ Waste Excavation and Removal  
☐ Waste Removal (Closed-loop systems only)  
☐ On-site Closure Method (Only for temporary pits and closed-loop systems)  
☐ In-place Burial ☐ On-site Trench Burial  
☐ Alternative Closure Method

14.

**Waste Excavation and Removal Closure Plan Checklist:** (19.15.17.13 NMAC) **Instructions:** Each of the following items must be attached to the closure plan. Please indicate, by a check mark in the box, that the documents are attached.

- ☐ Protocols and Procedures - based upon the appropriate requirements of 19.15.17.13 NMAC  
☐ Confirmation Sampling Plan (if applicable) - based upon the appropriate requirements of Subsection C of 19.15.17.13 NMAC  
☐ Disposal Facility Name and Permit Number (for liquids, drilling fluids and drill cuttings)  
☐ Soil Backfill and Cover Design Specifications - based upon the appropriate requirements of Subsection H of 19.15.17.13 NMAC  
☐ Re-vegetation Plan - based upon the appropriate requirements of Subsection H of 19.15.17.13 NMAC  
☐ Site Reclamation Plan - based upon the appropriate requirements of Subsection H of 19.15.17.13 NMAC

15.

**Siting Criteria (regarding on-site closure methods only):** 19.15.17.10 NMAC

**Instructions:** Each siting criteria requires a demonstration of compliance in the closure plan. Recommendations of acceptable source material are provided below. Requests regarding changes to certain siting criteria require justifications and/or demonstrations of equivalency. Please refer to 19.15.17.10 NMAC for guidance.

Ground water is less than 25 feet below the bottom of the buried waste. - NM Office of the State Engineer - iWATERS database search; USGS; Data obtained from nearby wells	<input type="checkbox"/> Yes <input type="checkbox"/> No <input type="checkbox"/> NA
Ground water is between 25-50 feet below the bottom of the buried waste - NM Office of the State Engineer - iWATERS database search; USGS; Data obtained from nearby wells	<input type="checkbox"/> Yes <input type="checkbox"/> No <input type="checkbox"/> NA
Ground water is more than 100 feet below the bottom of the buried waste. - NM Office of the State Engineer - iWATERS database search; USGS; Data obtained from nearby wells	<input type="checkbox"/> Yes <input type="checkbox"/> No <input type="checkbox"/> NA
Within 100 feet of a continuously flowing watercourse, or 200 feet of any other significant watercourse, lakebed, sinkhole, or playa lake (measured from the ordinary high-water mark). - Topographic map; Visual inspection (certification) of the proposed site	<input type="checkbox"/> Yes <input type="checkbox"/> No
Within 300 feet from a permanent residence, school, hospital, institution, or church in existence at the time of initial application. - Visual inspection (certification) of the proposed site; Aerial photo; Satellite image	<input type="checkbox"/> Yes <input type="checkbox"/> No
Within 300 horizontal feet of a private, domestic fresh water well or spring used for domestic or stock watering purposes, in existence at the time of initial application. - NM Office of the State Engineer - iWATERS database; Visual inspection (certification) of the proposed site	<input type="checkbox"/> Yes <input type="checkbox"/> No
Written confirmation or verification from the municipality; Written approval obtained from the municipality	<input type="checkbox"/> Yes <input type="checkbox"/> No
Within 300 feet of a wetland. US Fish and Wildlife Wetland Identification map; Topographic map; Visual inspection (certification) of the proposed site	<input type="checkbox"/> Yes <input type="checkbox"/> No
Within incorporated municipal boundaries or within a defined municipal fresh water well field covered under a municipal ordinance	

adopted pursuant to NMSA 1978, Section 3-27-3, as amended.

- Written confirmation or verification from the municipality; Written approval obtained from the municipality

☐ Yes ☐ No

Within the area overlying a subsurface mine.

- Written confirmation or verification or map from the NM EMNRD-Mining and Mineral Division

☐ Yes ☐ No

Within an unstable area.

- Engineering measures incorporated into the design; NM Bureau of Geology & Mineral Resources; USGS; NM Geological Society; Topographic map

☐ Yes ☐ No

Within a 100-year floodplain.

- FEMA map

☐ Yes ☐ No

16.

**On-Site Closure Plan Checklist:** (19.15.17.13 NMAC) *Instructions: Each of the following items must be attached to the closure plan. Please indicate, by a check mark in the box, that the documents are attached.*

- ☐ Siting Criteria Compliance Demonstrations - based upon the appropriate requirements of 19.15.17.10 NMAC
- ☐ Proof of Surface Owner Notice - based upon the appropriate requirements of Subsection E of 19.15.17.13 NMAC
- ☐ Construction/Design Plan of Burial Trench (if applicable) based upon the appropriate requirements of Subsection K of 19.15.17.11 NMAC
- ☐ Construction/Design Plan of Temporary Pit (for in-place burial of a drying pad) - based upon the appropriate requirements of 19.15.17.11 NMAC
- ☐ Protocols and Procedures - based upon the appropriate requirements of 19.15.17.13 NMAC
- ☐ Confirmation Sampling Plan (if applicable) - based upon the appropriate requirements of 19.15.17.13 NMAC
- ☐ Waste Material Sampling Plan - based upon the appropriate requirements of 19.15.17.13 NMAC
- ☐ Disposal Facility Name and Permit Number (for liquids, drilling fluids and drill cuttings or in case on-site closure standards cannot be achieved)
- ☐ Soil Cover Design - based upon the appropriate requirements of Subsection H of 19.15.17.13 NMAC
- ☐ Re-vegetation Plan - based upon the appropriate requirements of Subsection H of 19.15.17.13 NMAC
- ☐ Site Reclamation Plan - based upon the appropriate requirements of Subsection H of 19.15.17.13 NMAC

17.

**Operator Application Certification:**

I hereby certify that the information submitted with this application is true, accurate and complete to the best of my knowledge and belief.

Name (Print): \_\_\_\_\_ Title: \_\_\_\_\_

Signature: \_\_\_\_\_ Date: \_\_\_\_\_

e-mail address: \_\_\_\_\_ Telephone: \_\_\_\_\_

18.

**OCD Approval:** ☐ Permit Application (including closure plan) ☒ Closure Plan (only) ☐ OCD Conditions (see attachment)  
Report

OCD Representative Signature: Victoria Venegas Approval Date: 03/14/2022

Title: Environmental Specialist OCD Permit Number: BGT1

19.

**Closure Report (required within 60 days of closure completion):** 19.15.17.13 NMAC

*Instructions: Operators are required to obtain an approved closure plan prior to implementing any closure activities and submitting the closure report. The closure report is required to be submitted to the division within 60 days of the completion of the closure activities. Please do not complete this section of the form until an approved closure plan has been obtained and the closure activities have been completed.*

☒ Closure Completion Date: 2/1/2022

20.

**Closure Method:**

- ☒ Waste Excavation and Removal ☐ On-Site Closure Method ☐ Alternative Closure Method ☐ Waste Removal (Closed-loop systems only)
- ☐ If different from approved plan, please explain.

21.

**Closure Report Attachment Checklist:** *Instructions: Each of the following items must be attached to the closure report. Please indicate, by a check mark in the box, that the documents are attached.*

- ☒ Proof of Closure Notice (surface owner and division)
- ☐ Proof of Deed Notice (required for on-site closure for private land only)
- ☐ Plot Plan (for on-site closures and temporary pits)
- ☒ Confirmation Sampling Analytical Results (if applicable)
- ☐ Waste Material Sampling Analytical Results (required for on-site closure)
- ☐ Disposal Facility Name and Permit Number
- ☐ Soil Backfilling and Cover Installation
- ☐ Re-vegetation Application Rates and Seeding Technique
- ☒ Site Reclamation (Photo Documentation)

On-site Closure Location: Latitude 36.83786053 Longitude -107.9003181 NAD: ☐ 1927 ☒ 1983

22.

**Operator Closure Certification:**

I hereby certify that the information and attachments submitted with this closure report is true, accurate and complete to the best of my knowledge and belief. I also certify that the closure complies with all applicable closure requirements and conditions specified in the approved closure plan.

Name (Print): Sabre Beebe Title: Field Environmental Coordinator

Signature: Sabre Beebe Date: 2/17/2022

e-mail address: sabre.beebe@ikavenergy.com Telephone: (970) 852-5172



**SIMCOE, LLC**  
**SAN JUAN BASIN, NORTHWEST NEW MEXICO**

**Well Name: Atlantic B LS #013**  
**Well API# 30-045-20856**  
**Unit Letter I, Section 5, T30N, R10W**

**BELOW-GRADE TANK CLOSURE PLAN**

This plan will address the standard protocols and procedures for closure of below-grade tanks (BGTs) on this SIMCOE, LLC well sites. As stipulated in Paragraph A of 19.15.17.13 NMAC, SIMCOE, LLC shall close a BGT within the time periods provided in 19.15.17.13 NMAC, or by an earlier date that the New Mexico Oil Conservation Division (NMOCD) requires because of imminent danger to fresh water, public health, safety, or the environment. If deviations from this plan are necessary, any specific changes will be included on form C-144 and approved by the NMOCD. SIMCOE, LLC shall close an existing BGT that does not meet the requirements of Paragraphs (1) through (4) of Subsection I of 19.15.17.11 NMAC or is not included in Paragraph (5) of Subsection I of 19.15.17.11 NMAC within five years after June 16, 2008, if not retrofit with a BGT that complies with the SIMCOE, LLC NMOCD approved BGT design attached to the SIMCOE, LLC Design and Construction Plan. SIMCOE, LLC shall close an existing BGT that does not meet the requirements of Paragraphs (1) through (4) of Subsection I of 19.15.17.11 NMAC, if not previously retrofitted to comply with the SIMCOE, LLC NMOCD approved BGT Design attached to the SIMCOE, LLC Design and Construction Plan, prior to any sale or change in operator pursuant to 19.15.9.9 NMAC. SIMCOE, LLC shall close the permitted BGT within 60 days of cessation of the BGTs operation or as required by the transitional provisions of Subsection B, D, or E of 19.15.17.17 NMAC.

**General Closure Plan**

1. SIMCOE, LLC shall notify the surface owner by certified mail that it plans to close a BGT. Evidence of mailing of the notice to the address of the surface owner shown in the county tax records demonstrates compliance with this requirement.

**Notice was provided and is attached.**

2. SIMCOE, LLC shall notify the division District III office verbally or by other means at least 72 hours, but not more than one (1) week, prior to any closure operation. The notice shall include the operator's name, and the location to be closed by unit letter, section, township, and range. If the BGT closure is associated with a particular well, then the notice shall also include the well's name, number, and API number.

**Notice was provided and is attached.**

3. SIMCOE, LLC shall remove liquids and sludge from the BGT prior to implementing a closure method and dispose of the liquids and sludge in a NMOCD's division-approved facility. The facilities to be utilized are:

- a. JFJ Land farm, Permit NM-01-010(B) (Solids and Sludge)
- b. Basin Disposal, Permit NM-01-0005 (Liquids)
- c. Envirotech Inc Soil Remediation Facility, Permit NM-01-0011 (Solids and Sludge)
- d. Simcoe, LLC Operated 13 GCU SWD # 1, API 30-045-28601 (Liquids)
- e. Simcoe, LLC Operated GCU 259 SWD, API 30-045-20006 (Liquids)
- f. Simcoe, LLC Operated GCU 306 SWD, API30-045-24286 (Liquids)
- g. Simcoe, LLC Operated GCU 307 SWD, API30-045-24248 (Liquids)
- h. Simcoe, LLC Operated GCU 328 SWD, API 30-045-24735 (Liquids)
- i. Simcoe, LLC Operated Pritchard SWD #1, API 30-045-28351 (Liquids)

**All liquids and/or sludge within the BGT were removed and sent to one of the above NMOCD approved facilities for disposal.**

4. Simcoe, LLC shall remove the BGT and dispose of it in a NMOCD approved facility or recycle, reuse, or reclaim it in a manner that the NMOCD approves. If a liner is present and must be disposed of it will be cleaned by scraping any soils or other attached materials on the liner to a de minimus amount and disposed at a permitted solid waste facility, pursuant to Subparagraph (m) of Paragraph (1) of Subsection C of 19.15.35.8 NMAC. Documentation as to the final disposition of the removed BGT will be provided in the final closure report.

**The BGT was transported for reuse.**

5. Simcoe, LLC shall remove any on-site equipment associated with a BGT unless the equipment is required for well production.

**All equipment associated with the BGT has been removed.**

6. Simcoe, LLC shall sample the soils beneath the BGT to determine whether a release has occurred. Simcoe, LLC shall collect at a minimum: a five (5) point composite sample and individual grab samples from any area that is wet, discolored or showing other evidence of a release and analyze for BTEX, TPH, and chlorides. The testing methods for those constituents are as follows.

Constituents	Testing Method	Closure Criteria (mg/kg)	5PC-TB@5'(45) Results (mg/kg)
Chloride	US EPA Method 300.0	10,000	54.5
TPH	US EPA Method SW-846 418.1	2,500	ND
GRO + DRO	US EPA Method SW-846 8015M	1,000	ND
Total BTEX	US EPA Method SW-846 8021B or 8260B	50	ND
Benzene	US EPA Method SW-846 8021B or 8260B	10	ND

**Notes:** mg/kg- milligram per kilogram; GRO- gasoline range organics; DRO- diesel range organics; TPH- total petroleum hydrocarbons; BTEX- benzene, toluene, ethylbenzene, and total xylenes; ND- analyte not detected. Other EPA methods that the division approves may be applied to all constituents listed. Chloride closure standards will be determined by whichever concentration level is greatest.

**Soils beneath the BGT were sampled for TPH, BTEX, and chloride per the above requirements. TPH and BTEX were all non-detect based on laboratory analytical results. Chloride was detected above the laboratory detection limit but below the NMOCD standard.**

7. Simcoe, LLC shall notify the division District III office of its results on form C-141.

**Form C-141 is attached.**

8. If it is found that a release has occurred, then Simcoe, LLC will comply with 19.15.30 NMAC and 19.15.29 NMAC, as appropriate.

**Sampling results and field observations reveal no evidence of a release had occurred.**

9. If the sampling demonstrates that a release has not occurred or that any release does not exceed the concentrations specified above, then Simcoe, LLC shall backfill the excavation, with compacted, non-waste containing, earthen material; construct a division-prescribed soil cover, re-contour and re-vegetate the location. The location will be reclaimed if it is not with in the active process area.

**No evidence of a release. Area backfilled / regraded.**

10. Simcoe, LLC shall reclaim the BGT location, and all areas associated with the BGT including associated access roads to a safe and stable condition that blends with the surrounding undisturbed area. Simcoe, LLC shall substantially restore the impacted surface area to the condition that existed prior to oil and gas operations by placement of the soil cover as provided in Subsection H of 19.15.17.13 NMAC, re-contour the location and associated areas to a contour that approximates the original contour and blends



with the surrounding topography and re-vegetate according to Subsection I of 19.15.17.13 NMAC. 11. The soil cover for closures where the BGT has been removed or remediated to the NMOCD's satisfaction shall consist of the background thickness of topsoil or one foot of suitable material to establish vegetation at the site, whichever is greater.

**Area backfilled / regraded. No reclamation to be done at this time as former BGT location is located on well pad within area needed for production operations or subsequent drilling.**

12. Simcoe, LLC shall seed the disturbed area the first growing season after closure of the BGT. Seeding will be conducted by drilling on the contour whenever practical or by other division- approved methods. Vegetative cover will be, at a minimum, 70% of the native perennial vegetative cover (un-affected by overgrazing, fire or other intrusion damaging to native vegetation), consisting of at least three native plant species, including at least one grass, but not including noxious weeds, and maintenance of that cover through two successive growing seasons. During the two growing seasons that prove viability, there shall be no artificial irrigation of the vegetation.

**Area backfilled / regraded. No reclamation to be done at this time as former BGT location is located on well pad within area needed for production operations or subsequent drilling.**

13. Simcoe, LLC shall seed, plant and re-seed pursuant to Paragraph (3) of Subsection I of 19.15.17.13 NMAC, until the location successfully achieves the required vegetative cover.

**Area backfilled / regraded. No reclamation to be done at this time as former BGT location is located on well pad within area needed for production operations or subsequent drilling.**

14. Pursuant to Paragraph (5) of Subsection I of 19.15.17.13 NMAC, Simcoe, LLC shall notify the NMOCD when it has seeded or planted and when it successfully achieves revegetation.

**Area backfilled / regraded. No reclamation to be done at this time as former BGT location is located on well pad within area needed for production operations or subsequent drilling.**

15. Within 60 days of closure completion, Simcoe, LLC shall submit a closure report on NMOCD's form C-144, and will include the following:

- a. proof of closure notification (surface owner and NMOCD),
- b. sampling analytical reports: information required by 19.15.17 NMAC,
- c. disposal facility name and permit number,
- d. details on back-filling, capping, covering; and, where applicable, re-vegetation application rates and seeding techniques; and,
- e. site reclamation, photo documentation, disposal facility name, and permit number

**Closure report on Form C-144 is included and contains a photo of the location.**

16. Simcoe, LLC shall certify that all information in the report and attachments is accurate, truthful, and compliant with all applicable closure requirements and conditions specified in the approved closure plan.

**Certification section of Form C-144 has been completed.**

<b>Well Name:</b> ATLANTIC B LS	<b>Well Location:</b> T30N / R10W / SEC 5 / NESE / 36.837769 / -107.89978	<b>County or Parish/State:</b> SAN JUAN / NM
<b>Well Number:</b> 13	<b>Type of Well:</b> CONVENTIONAL GAS WELL	<b>Allottee or Tribe Name:</b>
<b>Lease Number:</b> NMSF080917	<b>Unit or CA Name:</b>	<b>Unit or CA Number:</b>
<b>US Well Number:</b> 3004520856	<b>Well Status:</b> Producing Gas Well	<b>Operator:</b> SIMCOE LLC

### Notice of Intent

**Sundry ID:** 2654052

**Type of Submission:** Notice of Intent

**Type of Action:** Other

**Date Sundry Submitted:**

**Time Sundry Submitted:**

**Date proposed operation will begin:** 02/01/2022

**Procedure Description:** Closure of 45 bbl below grade tank aerial map attached for tank location.

### Surface Disturbance

**Is any additional surface disturbance proposed?:** No

### NOI Attachments

**Procedure Description**

2022.01.25\_Atlantic\_B\_LS\_013\_aerial\_map\_for\_BLM\_BGT\_closure\_20220125104615.pdf

Well Name: ATLANTIC BLS

Well Location: T30N / R10W / SEC 5 /  
NESE / 36.837769 / -107.89978County or Parish/State: SAN  
JUAN / NM

Well Number: 13

Type of Well: CONVENTIONAL GAS  
WELL

Allottee or Tribe Name:

Lease Number: NMSF080917

Unit or CA Name:

Unit or CA Number:

US Well Number: 3004520856

Well Status: Producing Gas Well

Operator: SIMCOE LLC

**Operator Certification**

*I certify that the foregoing is true and correct. Title 18 U.S.C. Section 1001 and Title 43 U.S.C. Section 1212, make it a crime for any person knowingly and willfully to make to any department or agency of the United States any false, fictitious or fraudulent statements or representations as to any matter within its jurisdiction. Electronic submission of Sundry Notices through this system satisfies regulations requiring a submission of Form 3160-5 or a Sundry Notice.*

Operator Electronic Signature: SABRE BEEBE

Signed on: JAN 25, 2022 10:47 AM

Name: SIMCOE LLC

Title: Compliance Specialist

Street Address: 1199 MAIN AVENUE SUITE 101

City: DURANGO

State: CO

Phone: (970) 769-9523

Email address: SABRE.BEEBE@IKAVENERGY.COM

**Field Representative**

Representative Name:

Street Address:

City:

State:

Zip:

Phone:

Email address:

<b>Well Name:</b> ATLANTIC B LS	<b>Well Location:</b> T30N / R10W / SEC 5 / NESE / 36.837769 / -107.89978	<b>County or Parish/State:</b> SAN JUAN / NM
<b>Well Number:</b> 13	<b>Type of Well:</b> CONVENTIONAL GAS WELL	<b>Allottee or Tribe Name:</b>
<b>Lease Number:</b> NMSF080917	<b>Unit or CA Name:</b>	<b>Unit or CA Number:</b>
<b>US Well Number:</b> 3004520856	<b>Well Status:</b> Producing Gas Well	<b>Operator:</b> SIMCOE LLC

#### Notice of Intent

**Sundry ID:** 2654319

**Type of Submission:** Notice of Intent

**Type of Action:** Other

**Date Sundry Submitted:**

**Time Sundry Submitted:**

**Date proposed operation will begin:**

**Procedure Description:**

#### Surface Disturbance

**Is any additional surface disturbance proposed?:** No

## Emma Millar

---

**From:** Sabre Beebe <sabre.beebe@ikavenergy.com>  
**Sent:** January 27, 2022 6:52 AM  
**To:** ocd.enviro@state.nm.us; Christopher Whitehead (chris.whitehead@state.nm.us)  
**Cc:** Don Buller; Julie Best; Jonathan Divine  
**Subject:** SIMCOE, LLC Atlantic B LS 013 Below Grade Tank (BGT) Closure

SENT VIA E-MAIL

January 26, 2022

New Mexico Oil Conservation Division  
1000 Rio Brazos Road  
Aztec, New Mexico 87410

RE: Notice of Proposed Below-Grade Tank (BGT) Closure

Well Name: Atlantic B LS 013  
API# - 30-045-20856  
I-5-30N-10W  
San Juan County, NM

To Whom It May Concern:

With regards to the captioned subject well and requirements of the NMOCD Pit Rule 19.15.17.13, this letter is notification that SIMCOE LLC is planning to close a 45 bbl BGT that will no longer be operational at the above well site. We anticipate this work to start on or around February 1, 2022 at 9:00 AM.

Should you have any questions, please feel free to contact SIMCOE LLC.

Sincerely,

Sabre Beebe



**IKAV Energy Inc.**  
**Sabre Beebe**  
**Field Environmental Coordinator**  
**Office: (970) 852-5172**  
**Mobile: (970)-769-9523**  
**E-Mail: [sabre.beebe@ikavenergy.com](mailto:sabre.beebe@ikavenergy.com)**

Confidentiality notice:

This e-mail communication (and any attachment/s) are confidential and are intended only for the individual(s) or entity named above and to others who have been specifically authorized to receive it. Any information in this email and attachments may be legally privileged. If you are not the intended recipient, any disclosure, copying, reading, distribution, or any action taken or omitted in reliance on it, is prohibited and may be unlawful. Any opinions or advice contained in this email are subject to confidentiality and any terms and conditions may be protected by an engagement

District I  
1625 N. French Dr., Hobbs, NM 88240  
District II  
811 S. First St., Artesia, NM 88210  
District III  
1000 Rio Brazos Road, Aztec, NM 87410  
District IV  
1220 S. St. Francis Dr., Santa Fe, NM 87505

State of New Mexico  
Energy Minerals and Natural  
Resources Department

Oil Conservation Division  
1220 South St. Francis Dr.  
Santa Fe, NM 87505

Form C-141  
Revised August 24, 2018  
Submit to appropriate OCD District office

Incident ID	
District RP	
Facility ID	
Application ID	

## Release Notification

### Responsible Party

Responsible Party SIMCOE, LLC	OGRID 329736
Contact Name Sabre Beebe	Contact Telephone (970) 852-5172
Contact email sabre.beebe@ikavenergy.com	Incident # (assigned by OCD)
Contact mailing address 1199 Main Ave., Suite 101 Durango, CO 81301	

### Location of Release Source

Latitude 36.83786053 Longitude -107.9003181  
(NAD 83 in decimal degrees to 5 decimal places)

Site Name Atlantic B LS #013	Site Type Natural Gas Well
Date Release Discovered NA	API# (if applicable) 30-045-20856

Unit Letter	Section	Township	Range	County
I	5	30N	10W	San Juan

Surface Owner: ☐ State ☒ Federal ☐ Tribal ☐ Private (Name: \_\_\_\_\_)

### Nature and Volume of Release

Material(s) Released (Select all that apply and attach calculations or specific justification for the volumes provided below)

<input type="checkbox"/> Crude Oil	Volume Released (bbls)	Volume Recovered (bbls)
<input type="checkbox"/> Produced Water	Volume Released (bbls)	Volume Recovered (bbls)
	Is the concentration of dissolved chloride in the produced water >10,000 mg/l?	<input type="checkbox"/> Yes <input type="checkbox"/> No
<input type="checkbox"/> Condensate	Volume Released (bbls)	Volume Recovered (bbls)
<input type="checkbox"/> Natural Gas	Volume Released (Mcf)	Volume Recovered (Mcf)
<input type="checkbox"/> Other (describe)	Volume/Weight Released (provide units)	Volume/Weight Recovered (provide units)

Cause of Release TPH and BTEX non-detect based on laboratory analytical results. Chloride detected below the NMOCD standard.  
No evidence that a release has occurred.



## Initial Response

*The responsible party must undertake the following actions immediately unless they could create a safety hazard that would result in injury*

Released to Imaging: 3/14/2022 2:34:50 PM

CLIENT: <u>Simcoe LLC</u>	<b>COTTONWOOD CONSULTING LLC</b> <b>P.O. BOX 1653, DURANGO, COLO. 81302</b> <b>(970) 764-7356</b>	API #: <u>3004520856</u> TANK ID (if applicable): <u>A</u>
---------------------------	---	---

<b>FIELD REPORT:</b>  <b>SITE INFORMATION:</b> QUAD/UNIT: <u>I SEC: 5 TWP: 30N</u> <u>RNG: 10W</u> <u>PM: NM</u> <u>CNTY: San Juan ST: NM</u> <u>1/4 -1/4/FOOTAGE: 1650 FSL 890 FEL</u> <u>LEASE TYPE: (FEDERAL) / STATE / FEE / INDIAN</u> <u>LEASE #: NMSF080917</u> <u>PROD. FORMATION: PC</u> <u>CONTACT: Kelly Oilfield</u>	(circle one): <u>BGT CONFIRMATION</u> / RELEASE INVESTIGATION / OTHER:  DATE STARTED: <u>2/1/22</u> DATE FINISHED: <u>2/1/22</u> ENVIRONMENTAL SPECIALIST(S): <u>KS</u>	PAGE #: <u>1</u> of <u>1</u>
---	---	------------------------------

<b>REFERENCE POINT:</b> 1) <u>45 BBIs Steel Tank A</u> 2) _____ 3) _____ 4) _____	WELL HEAD (W.H.) GPS COORD.: <u>36.837872, -107.900299</u> <u>GL ELEV.: 6294</u> GPS COORD.: <u>36.837861, -107.900318</u> DISTANCE/BEARING FROM P&A: _____ GPS COORD.: _____    DISTANCE/BEARING FROM P&A: _____ GPS COORD.: _____    DISTANCE/BEARING FROM P&A: _____ GPS COORD.: _____    DISTANCE/BEARING FROM P&A: _____
---	---

<b>SAMPLING DATA:</b> 1) SAMPLE ID: <u>5PC-TB@5'(45)</u> SAMPLE DATE: <u>2/1/22</u> SAMPLE TIME: <u>0910</u> LAB ANALYSIS: <u>8015B/8021B/300.0(Ci)</u> 2) SAMPLE ID: _____    SAMPLE DATE: _____    SAMPLE TIME: _____    LAB ANALYSIS: _____ 3) SAMPLE ID: _____    SAMPLE DATE: _____    SAMPLE TIME: _____    LAB ANALYSIS: _____ 4) SAMPLE ID: _____    SAMPLE DATE: _____    SAMPLE TIME: _____    LAB ANALYSIS: _____ 5) SAMPLE ID: _____    SAMPLE DATE: _____    SAMPLE TIME: _____    LAB ANALYSIS: _____	CHAIN OF CUSTODY RECORD(S) # OR LAB USED: <u>GAL</u> OVM READING (ppm): <u>0.2</u>
--	---

<b>SOIL DESCRIPTION:</b> SOIL COLOR: <u>Brown</u> COHESION (ALL OTHERS): <u>(NON COHESIVE) / SLIGHTLY COHESIVE / COHESIVE / HIGHLY COHESIVE</u> CONSISTENCY (NON COHESIVE SOILS): <u>(LOOSE) / FIRM / DENSE / VERY DENSE</u> MOISTURE: <u>DRY / SLIGHTLY MOIST / (MOIST) / WET / SATURATED / SUPER SATURATED</u> SAMPLE TYPE: <u>GRAB / (COMPOSITE) / # OF PTS. 5</u> DISCOLORATION/STAINING OBSERVED: <u>YES / (NO) / EXPLANATION -</u>	SOIL TYPE: <u>(SAND) / SILTY SAND / SILT / SILTY CLAY / CLAY / GRAVEL / OTHER</u> <u>Sand w/ minor gravel</u> PLASTICITY (CLAYS): <u>NON PLASTIC / SLIGHTLY PLASTIC / COHESIVE / MEDIUM PLASTIC / HIGHLY PLASTIC</u> DENSITY (COHESIVE CLAYS & SILTS): <u>SOFT / FIRM / STIFF / VERY STIFF / HARD</u> HC ODOR DETECTED: <u>YES / (NO) / EXPLANATION -</u> ANY AREAS DISPLAYING WETNESS: <u>YES / (NO) / EXPLANATION -</u>
--	---

<b>SITE OBSERVATIONS:</b> APPARENT EVIDENCE OF A RELEASE OBSERVED AND/OR OCCURRED: <u>YES / (NO) / EXPLANATION:</u> EQUIPMENT SET OVER RECLAIMED AREA: <u>YES / (NO) / EXPLANATION -</u> OTHER: _____	LOST INTEGRITY OF EQUIPMENT: <u>YES / (NO) / EXPLANATION -</u> EXCAVATION DIMENSION ESTIMATION: <u>NA ft. X NA ft. X NA ft.</u> EXCAVATION ESTIMATION (Cubic Yards): <u>NA</u> DEPTH TO GROUNDWATER: <u>50-100</u> NEAREST WATER SOURCE: <u>&lt;200ft</u> NEAREST SURFACE WATER: <u>&gt;100ft</u> NMOCD TPH CLOSURE STD: _____ ppm
--	--

<b>SITE SKETCH</b> BGT Located: <u>off / (on) site</u> PLOT PLAN circle: <u>attached</u>	OVM CALIB. READ. = <u>100</u> ppm    RF=1.00 OVM CALIB. GAS = <u>100</u> ppm TIME: <u>0850</u> am/pm    DATE: <u>2/1/22</u>
---	---

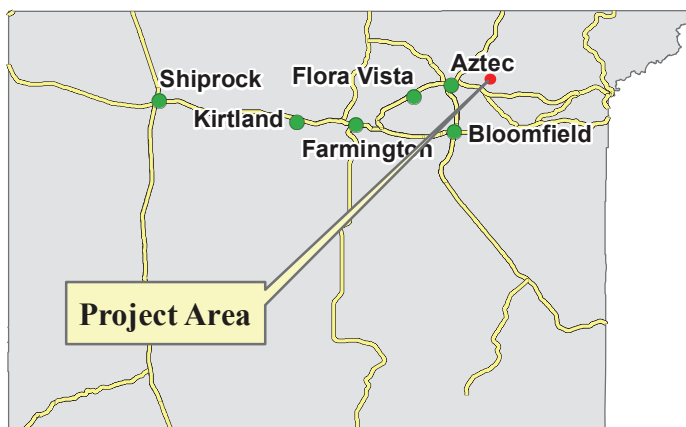
**MISCELL. NOTES**  
  
 Permit date(s): 6/14/10  
 OCD Appr. date(s): \_\_\_\_\_  

Tank ID	OVM = Organic Vapor Meter ppm = parts per million
<u>A</u>	BGT Sidewalls Visible: <u>(Y) / N</u>
	BGT Sidewalls Visible: <u>Y / N</u>
	BGT Sidewalls Visible: <u>Y / N</u>

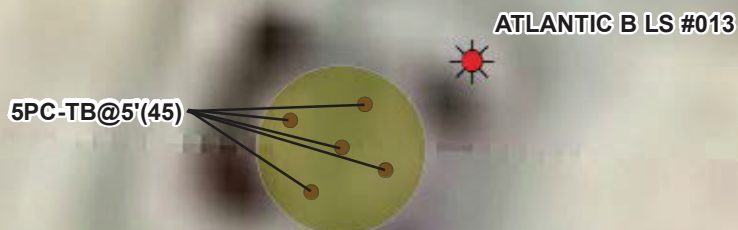
 Magnetic declination: \_\_\_\_\_

NOTES: BGT = BELOW GRADE TANK; ED = EXCAVATION DEPRESSION; BG = BELOW GRADE; B = BELOW; T.H. = TEST HOLE; ~ = APPROX.; W.H. = WELL HEAD; T.B. = TANK BOTTOM; PBGTL = PREVIOUS BELOW-GRADE TANK LOCATION; SPD = SAMPLE POINT DESIGNATION; R.W. = RETAINING WALL; NA = NOT APPLICABLE OR NOT AVAILABLE; SW = SINGLE WALL; DW = DOUBLE WALL; SB = SINGLE BOTTOM; DB = DOUBLE BOTTOM.	ONSITE: <u>2/1/22</u>
---	-----------------------



San Juan County, New Mexico



0 12.5 25 Feet



Notes: Sample collected 2/1/2022. Sample 5PC-TB@5'(45) is a five-point composite sample.

### Legend

- Soil Sample
- Approximate Former BGT Location
- Oil & Gas Wells

**Cottonwood**  
CONSULTING

Mapping by: E. Millar, 2/2/2022  
Coordinate System:  
NAD 1983 UTM Zone 13 N

Location: Sec 5 T30N R10W NMPM

**Atlantic B LS #013**  
**Project Map**  
**Simcoe LLC**





75 Suttle Street  
Durango, CO 81303  
970.247.4220 Phone  
970.247.4227 Fax  
[www.greenanalytical.com](http://www.greenanalytical.com)

11 February 2022

Kyle Siesser  
Cottonwood Consulting  
PO Box 1653  
Durango, CO 81302  
RE: BTEX/TPH, CI

Enclosed are the results of analyses for samples received by the laboratory on 02/01/22 15:52. The data to follow was performed, in whole or in part, by Green Analytical Laboratories. Any data that was performed by a subcontract laboratory is included within the GAL report, or with an additional report attached.

If you need any further assistance, please feel free to contact me.

Sincerely,

A handwritten signature in black ink that reads 'Debbie Zufelt'. The signature is written in a cursive, flowing style.

Debbie Zufelt  
Reports Manager

All accredited analytes contained in this report are denoted by an asterisk (\*). For a complete list of accredited analytes please do not hesitate to contact us via any of the contact information contained in this report. All of our certifications can be viewed at <http://greenanalytical.com/certifications/>

Green Analytical Laboratories is NELAP accredited through the Texas Commission on Environmental Quality. Accreditation applies to drinking water and non-potable water matrices for trace metals and a variety of inorganic parameters. Green Analytical Laboratories is also accredited through the Colorado Department of Public Health and Environment and EPA region 8 for trace metals, Cyanide, Fluoride, Nitrate, and Nitrite in drinking water. TNI Certificate Number: T104704514-22-13

Our affiliate laboratory, Cardinal Laboratories, is also NELAP accredited through the Texas Commission on Environmental Quality for a variety of organic constituents in drinking water, non-potable water and solid matrices. Cardinal is also accredited for regulated VOCs, TTHM, and HAA-5 in drinking water through the Colorado Department of Public Health and Environment and EPA region 8. TNI Certificate Number: T104704398-21-14



dzufelt@greenanalytical.com p: 970.247.4220 f: 970.247.4227 75 Suttle Street Durango, CO 81303

www.GreenAnalytical.com

Cottonwood Consulting  
PO Box 1653  
Durango CO, 81302

Project: BTEX/TPH, CI  
Project Name / Number: Atlantic B LS 013  
Project Manager: Kyle Siesser

**Reported:**  
02/11/22 15:00

#### ANALYTICAL REPORT FOR SAMPLES

Sample ID	Laboratory ID	Matrix	Date Sampled	Date Received	Notes
5PC-TB@5'(45)	2202029-01	Solid	02/01/22 09:10	02/01/22 15:52	

Green Analytical Laboratories

A handwritten signature in black ink that reads 'Debbie Zufelt'.

Debbie Zufelt, Reports Manager

The results in this report apply to the samples analyzed in accordance with the chain of custody document. This analytical report must be reproduced in its entirety. In no event shall Green Analytical Laboratories be liable for incidental or consequential damages. GALs liability, and clients exclusive remedy for any claim arising, shall be limited to the amount paid by client for analyses. All claims, including those for negligence and any other cause whatsoever, shall be deemed waived unless made in writing and received within thirty days after completion of the applicable service.



dzufelt@greenanalytical.com p: 970.247.4220 f: 970.247.4227 75 Suttle Street Durango, CO 81303

www.GreenAnalytical.com

Cottonwood Consulting  
PO Box 1653  
Durango CO, 81302

Project: BTEX/TPH, CI  
Project Name / Number: Atlantic B LS 013  
Project Manager: Kyle Siesser

Reported:  
02/11/22 15:00

**5PC-TB@5'(45)****2202029-01 (Soil)**

Analyte	Result	RL	MDL	Units	Dilution	Analyzed	Method	Notes	Analyst
---------	--------	----	-----	-------	----------	----------	--------	-------	---------

**General Chemistry**

% Dry Solids	94.6			%	1	02/03/22 12:33	EPA160.3/1684		VJW
--------------	------	--	--	---	---	----------------	---------------	--	-----

**Soluble (DI Water Extraction)**

Chloride	54.5	52.8	1.61	mg/kg dry	50	02/05/22 20:42	EPA300.0		AES
----------	------	------	------	-----------	----	----------------	----------	--	-----

**Subcontracted -- Cardinal Laboratories 101 East Marland Hobbs, NM 88240****Volatile Organic Compounds by EPA Method 8021**

Benzene*	<0.050	0.050	0.004	mg/kg	50	02/09/22 17:47	8021B		MS/
Toluene*	<0.050	0.050	0.006	mg/kg	50	02/09/22 17:47	8021B		MS/
Ethylbenzene*	<0.050	0.050	0.006	mg/kg	50	02/09/22 17:47	8021B		MS/
Total Xylenes*	<0.150	0.150	0.014	mg/kg	50	02/09/22 17:47	8021B		MS/
Total BTEX	<0.300	0.300	0.030	mg/kg	50	02/09/22 17:47	8021B		MS/

Surrogate: 4-Bromofluorobenzene (PID)	102 %	69.9-140				02/09/22 17:47	8021B		MS/
---------------------------------------	-------	----------	--	--	--	----------------	-------	--	-----

**Petroleum Hydrocarbons by GC FID**

GRO C6-C10*	<10.0	10.0	6.25	mg/kg	1	02/09/22 21:17	8015B		CK
DRO >C10-C28*	<10.0	10.0	4.26	mg/kg	1	02/09/22 21:17	8015B		CK
EXT DRO >C28-C36	<10.0	10.0	4.26	mg/kg	1	02/09/22 21:17	8015B		CK

Surrogate: 1-Chlorooctane	86.8 %	66.9-136				02/09/22 21:17	8015B		CK
---------------------------	--------	----------	--	--	--	----------------	-------	--	----

Surrogate: 1-Chlorooctadecane	98.6 %	59.5-142				02/09/22 21:17	8015B		CK
-------------------------------	--------	----------	--	--	--	----------------	-------	--	----

Green Analytical Laboratories

Debbie Zufelt, Reports Manager

The results in this report apply to the samples analyzed in accordance with the chain of custody document. This analytical report must be reproduced in its entirety. In no event shall Green Analytical Laboratories be liable for incidental or consequential damages. GALs liability, and clients exclusive remedy for any claim arising, shall be limited to the amount paid by client for analyses. All claims, including those for negligence and any other cause whatsoever, shall be deemed waived unless made in writing and received within thirty days after completion of the applicable service.





dzufelt@greenanalytical.com p: 970.247.4220 f: 970.247.4227 75 Suttle Street Durango, CO 81303

www.GreenAnalytical.com

Cottonwood Consulting  
PO Box 1653  
Durango CO, 81302

Project: BTEX/TPH, CI  
Project Name / Number: Atlantic B LS 013  
Project Manager: Kyle Siesser

Reported:  
02/11/22 15:00

## General Chemistry - Quality Control

Analyte	Result	Reporting Limit	Units	Spike Level	Source Result	%REC	%REC Limits	RPD	RPD Limit	Notes
---------	--------	-----------------	-------	-------------	---------------	------	-------------	-----	-----------	-------

## Batch B220313 - General Prep - Wet Chem

Duplicate (B220313-DUP1) Source: 2202024-01 Prepared: 02/02/22 Analyzed: 02/03/22

% Dry Solids	73.5		%		72.4			1.43	20	
--------------	------	--	---	--	------	--	--	------	----	--

Duplicate (B220313-DUP2) Source: 2202042-01 Prepared: 02/02/22 Analyzed: 02/03/22

% Dry Solids	58.9		%		58.8			0.212	20	
--------------	------	--	---	--	------	--	--	-------	----	--

## Soluble (DI Water Extraction) - Quality Control

Analyte	Result	Reporting Limit	Units	Spike Level	Source Result	%REC	%REC Limits	RPD	RPD Limit	Notes
---------	--------	-----------------	-------	-------------	---------------	------	-------------	-----	-----------	-------

## Batch B220337 - IC- Ion Chromatograph

Blank (B220337-BLK1) Prepared: 02/04/22 Analyzed: 02/05/22

Chloride	ND	10.0	mg/kg wet							
----------	----	------	-----------	--	--	--	--	--	--	--

LCS (B220337-BS1) Prepared: 02/04/22 Analyzed: 02/05/22

Chloride	252	10.0	mg/kg wet	250	101	85-115				
----------	-----	------	-----------	-----	-----	--------	--	--	--	--

LCS Dup (B220337-BSD1) Prepared: 02/04/22 Analyzed: 02/05/22

Chloride	260	10.0	mg/kg wet	250	104	85-115	3.34	20		
----------	-----	------	-----------	-----	-----	--------	------	----	--	--

Green Analytical Laboratories

Debbie Zufelt, Reports Manager

The results in this report apply to the samples analyzed in accordance with the chain of custody document. This analytical report must be reproduced in its entirety. In no event shall Green Analytical Laboratories be liable for incidental or consequential damages. GALs liability, and clients exclusive remedy for any claim arising, shall be limited to the amount paid by client for analyses. All claims, including those for negligence and any other cause whatsoever, shall be deemed waived unless made in writing and received within thirty days after completion of the applicable service.



dzufelt@greenanalytical.com p: 970.247.4220 f: 970.247.4227 75 Suttle Street Durango, CO 81303

www.GreenAnalytical.com

Cottonwood Consulting  
PO Box 1653  
Durango CO, 81302

Project: BTEX/TPH, CI  
Project Name / Number: Atlantic B LS 013  
Project Manager: Kyle Siesser

Reported:  
02/11/22 15:00

## Volatile Organic Compounds by EPA Method 8021 - Quality Control

Analyte	Result	Reporting Limit	Units	Spike Level	Source Result	%REC	%REC Limits	RPD	RPD Limit	Notes
---------	--------	-----------------	-------	-------------	---------------	------	-------------	-----	-----------	-------

## Batch 2020904 - Volatiles

## Blank (2020904-BLK1)

Prepared &amp; Analyzed: 02/09/22

Surrogate: 4-Bromofluorobenzene (PID)	0.0512		mg/kg	0.0500		102	69.9-140			
Benzene	ND	0.050	mg/kg							
Ethylbenzene	ND	0.050	mg/kg							
Toluene	ND	0.050	mg/kg							
Total BTEX	ND	0.300	mg/kg							
Total Xylenes	ND	0.150	mg/kg							

## LCS (2020904-BS1)

Prepared &amp; Analyzed: 02/09/22

Surrogate: 4-Bromofluorobenzene (PID)	0.0504		mg/kg	0.0500		101	69.9-140			
Benzene	2.02	0.050	mg/kg	2.00		101	85.1-114			
Ethylbenzene	1.93	0.050	mg/kg	2.00		96.4	84.4-115			
m,p-Xylene	4.06	0.100	mg/kg	4.00		102	85.5-116			
o-Xylene	1.95	0.050	mg/kg	2.00		97.5	85.2-111			
Toluene	2.00	0.050	mg/kg	2.00		100	88.6-116			
Total Xylenes	6.01	0.150	mg/kg	6.00		100	86.2-113			

## LCS Dup (2020904-BSD1)

Prepared &amp; Analyzed: 02/09/22

Surrogate: 4-Bromofluorobenzene (PID)	0.0500		mg/kg	0.0500		100	69.9-140			
Benzene	2.15	0.050	mg/kg	2.00		107	85.1-114	6.14	12.6	
Ethylbenzene	2.07	0.050	mg/kg	2.00		103	84.4-115	6.88	13.9	
m,p-Xylene	4.33	0.100	mg/kg	4.00		108	85.5-116	6.32	13.6	
o-Xylene	2.06	0.050	mg/kg	2.00		103	85.2-111	5.60	14.1	
Toluene	2.13	0.050	mg/kg	2.00		107	88.6-116	6.43	13.3	
Total Xylenes	6.39	0.150	mg/kg	6.00		107	86.2-113	6.08	13.4	

Green Analytical Laboratories

Debbie Zufelt, Reports Manager

The results in this report apply to the samples analyzed in accordance with the chain of custody document. This analytical report must be reproduced in its entirety. In no event shall Green Analytical Laboratories be liable for incidental or consequential damages. GALs liability, and clients exclusive remedy for any claim arising, shall be limited to the amount paid by client for analyses. All claims, including those for negligence and any other cause whatsoever, shall be deemed waived unless made in writing and received within thirty days after completion of the applicable service.



dzufelt@greenanalytical.com p: 970.247.4220 f: 970.247.4227 75 Suttle Street Durango, CO 81303

www.GreenAnalytical.com

Cottonwood Consulting  
PO Box 1653  
Durango CO, 81302

Project: BTEX/TPH, CI  
Project Name / Number: Atlantic B LS 013  
Project Manager: Kyle Siesser

Reported:  
02/11/22 15:00

### Petroleum Hydrocarbons by GC FID - Quality Control

Analyte	Result	Reporting Limit	Units	Spike Level	Source Result	%REC	%REC Limits	RPD	RPD Limit	Notes
---------	--------	-----------------	-------	-------------	---------------	------	-------------	-----	-----------	-------

#### Batch 2020908 - General Prep - Organics

##### Blank (2020908-BLK1)

Prepared &amp; Analyzed: 02/09/22

Surrogate: 1-Chlorooctadecane	67.2		mg/kg	50.0		134	59.5-142			
Surrogate: 1-Chlorooctane	56.2		mg/kg	50.0		112	66.9-136			
DRO >C10-C28	ND	10.0	mg/kg							
EXT DRO >C28-C36	ND	10.0	mg/kg							
GRO C6-C10	ND	10.0	mg/kg							

##### LCS (2020908-BS1)

Prepared &amp; Analyzed: 02/09/22

Surrogate: 1-Chlorooctadecane	72.3		mg/kg	50.0		145	59.5-142			
Surrogate: 1-Chlorooctane	60.9		mg/kg	50.0		122	66.9-136			
DRO >C10-C28	220	10.0	mg/kg	200		110	83-129			
GRO C6-C10	188	10.0	mg/kg	200		93.9	81.6-129			
Total TPH C6-C28	408	10.0	mg/kg	400		102	84.5-127			

##### LCS Dup (2020908-BSD1)

Prepared &amp; Analyzed: 02/09/22

Surrogate: 1-Chlorooctadecane	70.9		mg/kg	50.0		142	59.5-142			
Surrogate: 1-Chlorooctane	60.0		mg/kg	50.0		120	66.9-136			
DRO >C10-C28	220	10.0	mg/kg	200		110	83-129	0.0400	17.9	
GRO C6-C10	187	10.0	mg/kg	200		93.5	81.6-129	0.448	21.4	
Total TPH C6-C28	407	10.0	mg/kg	400		102	84.5-127	0.184	17.6	

### Notes and Definitions

DET	Analyte DETECTED
ND	Analyte NOT DETECTED at or above the reporting limit
NR	Not Reported
dry	Sample results reported on a dry weight basis *Results reported on as received basis unless designated as dry.
RPD	Relative Percent Difference
LCS	Laboratory Control Sample (Blank Spike)
RL	Report Limit
MDL	Method Detection Limit

Green Analytical Laboratories

Debbie Zufelt, Reports Manager

The results in this report apply to the samples analyzed in accordance with the chain of custody document. This analytical report must be reproduced in its entirety. In no event shall Green Analytical Laboratories be liable for incidental or consequential damages. GALs liability, and clients exclusive remedy for any claim arising, shall be limited to the amount paid by client for analyses. All claims, including those for negligence and any other cause whatsoever, shall be deemed waived unless made in writing and received within thirty days after completion of the applicable service.



(970) 247-4220  
Fax: (970) 247-4227

service@greenanalytical.com or dzufelt@greenanalytical.com  
75 Suttle St Durango, CO 81303

## CHAIN-OF-CUSTODY AND ANALYSIS REQUEST

[illegible]





**Atlantic B LS #013  
Photographic Log  
Simcoe, LLC**



Photo 1: Atlantic B LS #013 well sign, 2/1/2022.



Photo 2: 45 bbls steel tank "A" prior to removal, 2/1/2022.





Atlantic B LS #013  
Photographic Log  
Simcoe, LLC

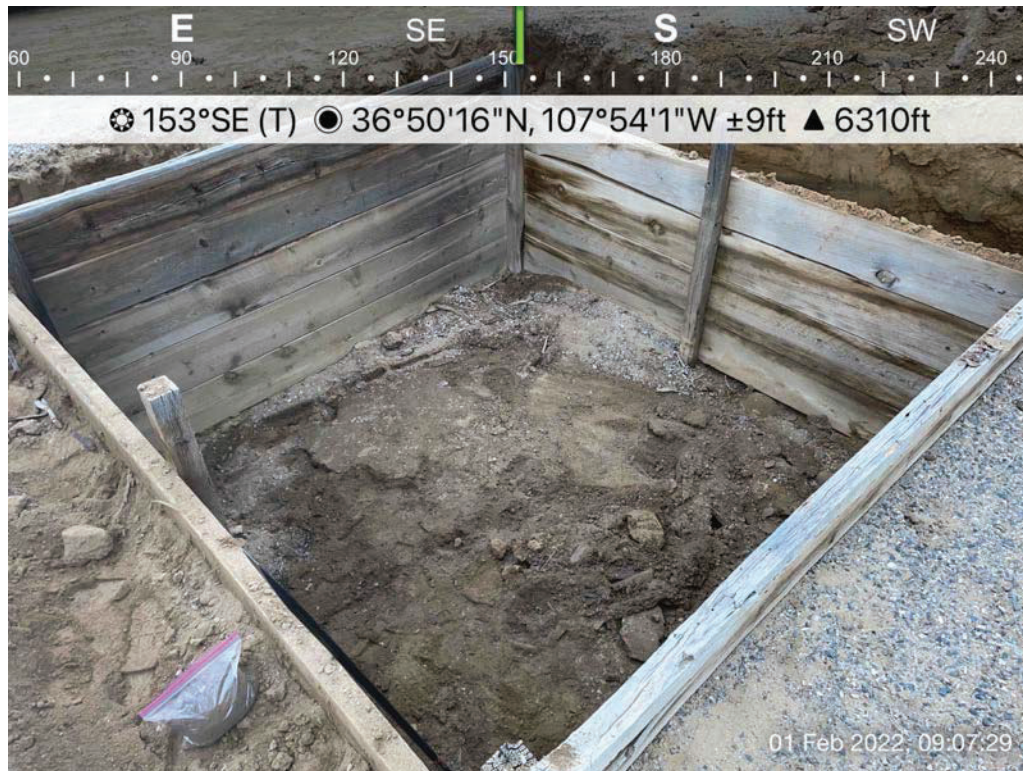


Photo 3: Former location of 45 bbls steel tank "A" following removal, 2/1/2022.



Photo 4: Former location of 45 bbls steel tank "A" following removal and re-grading, 2/1/2022.



**District I**  
1625 N. French Dr., Hobbs, NM 88240  
Phone:(575) 393-6161 Fax:(575) 393-0720  
**District II**  
811 S. First St., Artesia, NM 88210  
Phone:(575) 748-1283 Fax:(575) 748-9720  
**District III**  
1000 Rio Brazos Rd., Aztec, NM 87410  
Phone:(505) 334-6178 Fax:(505) 334-6170  
**District IV**  
1220 S. St Francis Dr., Santa Fe, NM 87505  
Phone:(505) 476-3470 Fax:(505) 476-3462

**State of New Mexico**  
**Energy, Minerals and Natural Resources**  
**Oil Conservation Division**  
**1220 S. St Francis Dr.**  
**Santa Fe, NM 87505**

CONDITIONS  
  
Action 84208

CONDITIONS

Operator: SIMCOE LLC 1199 Main Ave., Suite 101 Durango, CO 81301	OGRID: 329736
	Action Number: 84208
	Action Type: [C-144] Below Grade Tank Plan (C-144B)

CONDITIONS

Created By	Condition	Condition Date
vvenegas	None	3/14/2022