

Well Name: HUMBLE N KIRTLAND	Well Location: T30N / R14W / SEC 13 / NWSE / 36.81143 / -108.2571	County or Parish/State: SAN JUAN / NM
Well Number: 1E	Type of Well: CONVENTIONAL GAS WELL	Allottee or Tribe Name:
Lease Number: NMSF079070	Unit or CA Name:	Unit or CA Number:
US Well Number: 3004523866	Well Status: Abandoned	Operator: HILCORP ENERGY COMPANY

Subsequent Report

Sundry ID: 2661874

Type of Submission: Subsequent Report

Date Sundry Submitted: 03/14/2022

Date Operation Actually Began: 03/02/2022

Type of Action: Plug and Abandonment

Time Sundry Submitted: 12:18

Actual Procedure: The above mentioned well has been P&A'd as of 3/8/2022. Please see the attached plugging operations.

SR Attachments

Actual Procedure

SR_WRITEUP_20220314121803.pdf

Received by OCD: 3/16/2022 7:04:58 AM

Page 2 of 5

Well Name: HUMBLE N KIRTLAND	Well Location: T30N / R14W / SEC 13 / NWSE / 36.81143 / -108.2571	County or Parish/State: SAN JUAN / NM
Well Number: 1E	Type of Well: CONVENTIONAL GAS WELL	Allottee or Tribe Name:
Lease Number: NMSF079070	Unit or CA Name:	Unit or CA Number:
US Well Number: 3004523866	Well Status: Abandoned	Operator: HILCORP ENERGY COMPANY

Operator Certification

I certify that the foregoing is true and correct. Title 18 U.S.C. Section 1001 and Title 43 U.S.C. Section 1212, make it a crime for any person knowingly and willfully to make to any department or agency of the United States any false, fictitious or fraudulent statements or representations as to any matter within its jurisdiction. Electronic submission of Sundry Notices through this system satisfies regulations requiring a submission of Form 3160-5 or a Sundry Notice.

Operator Electronic Signature: AMANDA WALKER	Signed on: MAR 14, 2022 12:18 PM
Name: HILCORP ENERGY COMPANY	
Title: Operations/Regulatory Technician	
Street Address: 1111 TRAVIS ST.	
City: HOUSTON	State: TX
Phone: (346) 237-2177	
Email address: mwalker@hilcorp.com	

Field Representative

Representative Name:		
Street Address:		
City:	State:	Zip:
Phone:		
Email address:		

BLM Point of Contact

BLM POC Name: KENNETH G RENNICK	BLM POC Title: Petroleum Engineer
BLM POC Phone: 5055647742	BLM POC Email Address: krennick@blm.gov
Disposition: Accepted	Disposition Date: 03/15/2022
Signature: Kenneth Rennick	

Humble N Kirtland 1E
3004523866
SR P&A
NMSF079070

3/2/2022: MIRU. CK WELL PRESSURES (SITP: N/A SICP: 0 PSI SIBHP: 0 PSI). ND WH. NU BOP. MU PLUGGING SUB. TALLY & PU 193 JTS 2 3/8" TBG. TAG TOP OF CIBP @ 6220'. MIX & PMP PLUG 1 (DAKOTA) F/6220' T/6066' W/12SKS CLASS G NEAT CMT. 245 BBL SLURRY @ 1.15 YIELD & 15.99 PPG. DISPLACE CMT PLUG W/22.5 BBLS. LD 5 JTS. SIW. SL. WOC OVERNIGHT.

3/3/2022: CK WELL PRESSURES (SITP: N/A SICP: 0 PSI SIBHP: 0 PSI). TIH & TAG TOC FOR PLUG 1 @ 6049'. LD 20 JTS, EOT @ 5443'. MIX & PMP PLUG 2 (GALLUP) F/5443' T/5289' W/12 SKS CLASS G NEAT CMT. 2.45 BBL SLURRY @ 1.15 YIELD & 15.6 PPG. DISPLACE CMT PLUG W/19.5 BBLS. LD 5 JTS. WOC FOR 4 HRS. TIH & TAG TOC FOR PLUG 2 @ 5284'. LD 24 JTS, EOT @ 4502'. MIX & PMP PLUG 3 (MANCOS) F/4502' T/4348' W/12 SKS CLASS G NEAT CMT. 2.45 BBL SLURRY @ 1.15 YIELD & 15.8 PPG. DISPLACE CMT PLUG W/16.5 BBLS. LD 5 JTS. WOC PLUG 4 HRS. SDFN. WOC OVERNIGHT.

3/4/2022: CK WELL PRESSURES (SITP: N/A SICP: 0 PSI SIBHP: 0 PSI). TIH & TAG TOC FOR PLUG 3 @ 4349'. LD 34 JTS, EOT @ 3273'. MIX & PMP PLUG 4 (MESAVERDE) F/3273' T/3093' W/14 SKS CLASS G NEAT CMT. 2.85 BBL SLURRY @ 1.15 YIELD & 15.8 PPG. DISPLACE CMT PLUG W/16 BBLS. LD 6 JTS/ WOC PLUG 4 HRS. TIH & TAG TOC FOR PLUG 4 @ 3101'. LD 20 JTS, EOT @ 2432'. MIX & PMP PLUG 5 (CHACRA) F/2432' T/2278' W/12 SKS CLASS G NEAT CMT. 2.45 BBL SLURRY @ 1.15 YIELD & 15.8 PPG. DISPLACE CMT PLUG W/8.5 BBLS. LD 5 JTS. WOC PLUG OVER WEEKEND.

3/7/2022: CK WELL PRESSURES (SITP: N/A SICP: 0 PSI SIBHP: 0 PSI). TIH & TAG TOC FOR PLUG 5 @ 2303'. LD 19 JTS, EOT @ 1720'. MIX & PMP PLUG 6 (PICTURED CLIFFS) F/1720' T/1546' W/14 SKS CLASS G NEAT CMT. 2.85 BBL SLURRY @ 1.15 YIELD & 15.8 PPG. DISPLACE CMT PLUG W/5.5 BBLS. LD 6 JTS. WOC PLUG 4 HRS. TIH & TAG TOC FOR PLUG 6 @ 1595'. LD 5 JTS, EOT @ 1366'. MIX & PMP PLUG 7 (FRUITLAND COAL) F/1366' T/877' W/40 SKS CLASS G NEAT CMT. 8.19 BBL SLURRY @ 1.15 YIELD & 15.8 PPG. DISPLACE CMT PLUG W/3.5 BBLS. LD 16 JTS. WOC PLUG OVERNIGHT.

3/8/2022: CK WELL PRESSURES (SITP: N/A SICP: 0 PSI SIBHP: 0 PSI). TIH & TAG TOC FOR PLUG 7 @ 862'. LD 18 JTS EOT @ 314'. MIX & PMP PLUG 8 (SURFACE) F/314' T/SURF W/31 SKS CLASS G NEAT CMT. 6.34 BBL SLURRY @ 1.15 YIELD & 15.8 PPG. CIRC GOOD CMT TO SURFACE. LD 9 JTS PULLING OUT OF HOLE. WOC PLUG FOR 4 HRS. DIG OUT WH. RU WELDER, CUT OFF WH. WELD ON DRY HOLE MARKER. MIX & TOP OFF CELLAR W/31 SKS CLASS G NEAT CMT @ 1.25 & TOTALING 6.34 BBL SLURRY. RDRR @ 13:30 HRS.

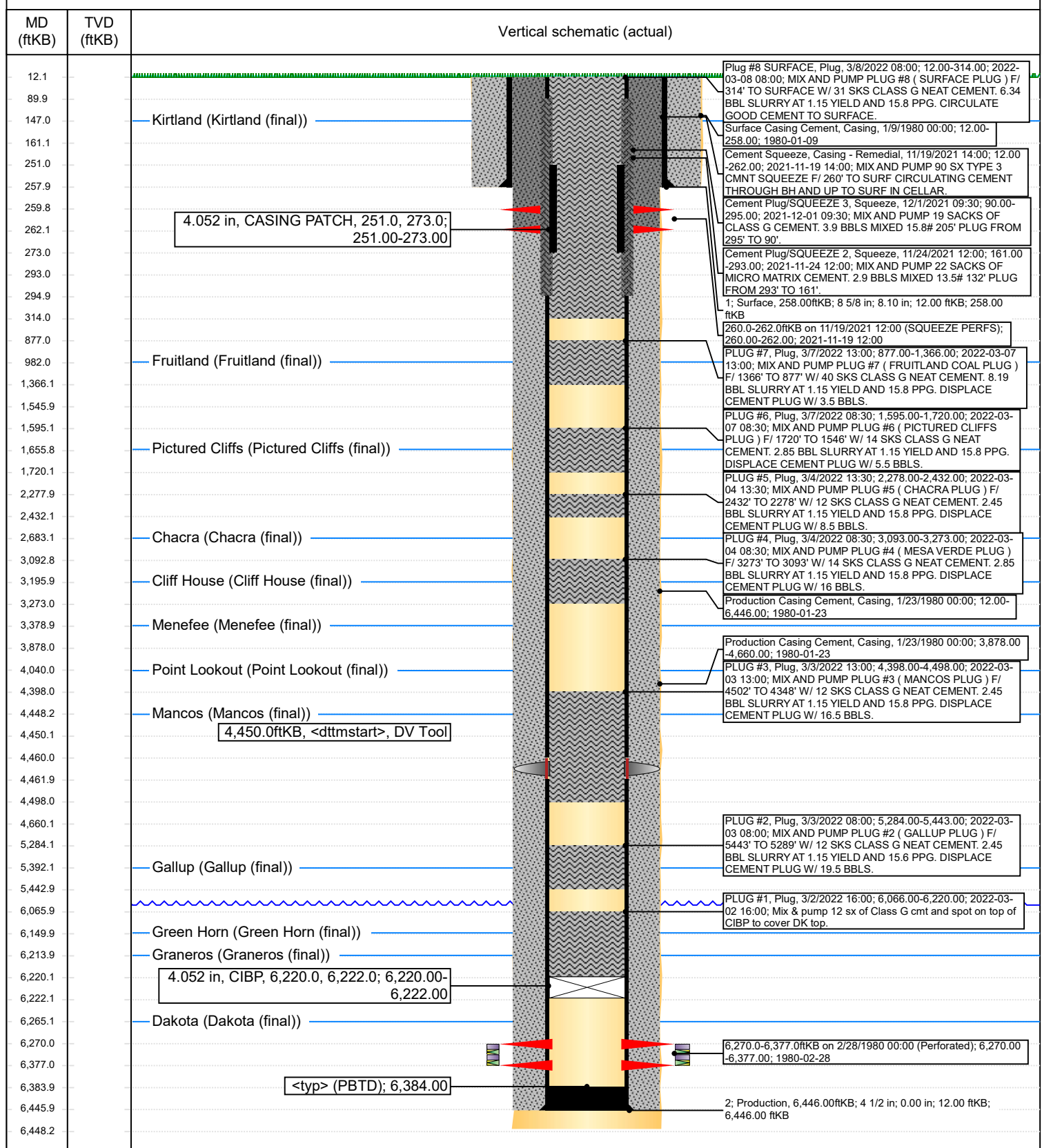


Current Schematic - Version 3

Well Name: HUMBLE N KIRTLAND #1E

API / UWI 3004523866	Surface Legal Location T30N-R14W-S13	Field Name Basin Dakota	Route 0202	State/Province New Mexico	Well Configuration Type Vertical
Ground Elevation (ft) 5,891.00	Original KB/RT Elevation (ft) 5,903.00	KB-Ground Distance (ft) 12.00	KB-Casing Flange Distance (ft)	KB-Tubing Hanger Distance (ft)	

Original Hole [Vertical]



District I
1625 N. French Dr., Hobbs, NM 88240
Phone:(575) 393-6161 Fax:(575) 393-0720
District II
811 S. First St., Artesia, NM 88210
Phone:(575) 748-1283 Fax:(575) 748-9720
District III
1000 Rio Brazos Rd., Aztec, NM 87410
Phone:(505) 334-6178 Fax:(505) 334-6170
District IV
1220 S. St Francis Dr., Santa Fe, NM 87505
Phone:(505) 476-3470 Fax:(505) 476-3462

State of New Mexico
Energy, Minerals and Natural Resources
Oil Conservation Division
1220 S. St Francis Dr.
Santa Fe, NM 87505

CONDITIONS

Action 90638

CONDITIONS

Operator: HILCORP ENERGY COMPANY 1111 Travis Street Houston, TX 77002	OGRID: 372171
	Action Number: 90638
	Action Type: [C-103] Sub. Plugging (C-103P)

CONDITIONS

Created By	Condition	Condition Date
mkuehling	None	3/21/2022