

Well Name: JICARILLA 430	Well Location: T23N / R5W / SEC 35 / SENE /	County or Parish/State: SANDOVAL / NM
Well Number: 5	Type of Well: OIL WELL	Allottee or Tribe Name: JICARILLA APACHE
Lease Number: JIC430	Unit or CA Name:	Unit or CA Number:
US Well Number: 3004320673	Well Status: Oil Well Shut In	Operator: DJR OPERATING LLC

Notice of Intent

Sundry ID: 2663965

Type of Submission: Notice of Intent	Type of Action: Plug and Abandonment
Date Sundry Submitted: 03/25/2022	Time Sundry Submitted: 12:47
Date proposed operation will begin: 03/25/2022	

Procedure Description: DJR conducted an echometer fluid level shot on March 10, 2022. The result of which indicated the possibility of a hole in the vicinity of 1217'. This request is being submitted for engineering & geological review prior to onsite inspection as approved by Dave M. of the BLM. A Reclamation Plan will be submitted on a subsequent sundry at a later date. DJR Operating, LLC requests permission to Plug & Abandon the subject well according to the attached Procedure, Current & Proposed Wellbore Diagram.

Surface Disturbance

Is any additional surface disturbance proposed?: No

NOI Attachments

Procedure Description

Jicarilla_430_5_BLM_Submittal_20220325124749.pdf

Well Name: JICARILLA 430	Well Location: T23N / R5W / SEC 35 / SENE /	County or Parish/State: SANDOVAL / NM
Well Number: 5	Type of Well: OIL WELL	Allottee or Tribe Name: JICARILLA APACHE
Lease Number: JIC430	Unit or CA Name:	Unit or CA Number:
US Well Number: 3004320673	Well Status: Oil Well Shut In	Operator: DJR OPERATING LLC

Conditions of Approval

Specialist Review

General_Requirement_PxA_20220329172947.pdf
23N5W15_Jicarilla_430_5_KGR_20220329172902.pdf
2663965_NOIA_430_5_3004320673_KR_03292022_20220329172844.pdf

Operator Certification

I certify that the foregoing is true and correct. Title 18 U.S.C. Section 1001 and Title 43 U.S.C. Section 1212, make it a crime for any person knowingly and willfully to make to any department or agency of the United States any false, fictitious or fraudulent statements or representations as to any matter within its jurisdiction. Electronic submission of Sundry Notices through this system satisfies regulations requiring a submission of Form 3160-5 or a Sundry Notice.

Operator Electronic Signature: SHAW-MARIE FORD	Signed on: MAR 29, 2022 02:02 PM
Name: DJR OPERATING LLC	
Title: Regulatory Specialist	
Street Address: 1 Road 3263	
City: Aztec	State: NM
Phone: (505) 632-3476	
Email address: sford@djrlc.com	

Field Representative

Representative Name:		
Street Address:		
City:	State:	Zip:
Phone:		
Email address:		

BLM Point of Contact

BLM POC Name: KENNETH G RENNICK	BLM POC Title: Petroleum Engineer
BLM POC Phone: 5055647742	BLM POC Email Address: krennick@blm.gov
Disposition: Approved	Disposition Date: 03/29/2022
Signature: Kenneth Rennick	

Plug and Abandonment Procedure
for
DJR Operating, LLC
Jicarilla 430 5
API # 30-043-20673
SE/NE, Unit H, Sec. 35, T23N, R5W
Sandoval County, NM

I.

1. Hold Pre job meeting, comply with all NMOCD, BLM and environmental regulations.
2. MIRU prep rig.
3. Check and record tubing, casing and bradenhead pressures.
4. Remove existing piping from casing valve, RU blow lines from casing valves and blow down casing pressure. Kill well as necessary. Ensure that well is dead or on a vacuum.
5. MIRU hot oil unit, pump hot water to clear tubing of paraffin.
6. Unset TAC.
7. ND WH, NU BOP, function test BOP.
8. Trip out of hole with rods and tubing. LD rods and tubing to be sent in for storage/salvage.
9. RDMO prep rig to next location.

II.

10. MIRU P&A rig and equipment.
11. PU workstring, TIH with bit and scraper, make sure that the bit and scraper will go below 6060'. TOOH.
12. Plug 1. Lower Mancos perfs. PU and TIH with 4-1/2" CR. Set at 6060'. Pressure test tubing to 1000 psi. RU cement equipment. Squeeze below CR with 10 sx. Sting out and spot plug from 6060-6010' on top of CR. PU and pump water to ensure tubing is clear.

13. Plug 2. Gallup top and perfs: Spot balanced plug from 5372-5080'. PU and pump water to ensure tubing is clear. PU and WOC. Tag TOC.
 14. Roll hole and pressure test casing to 600 psi. If test fails, contact engineering. TOOH.
 15. RU and RIH with wireline and run CBL from top of cement as tagged in Step 13 to surface. Electronic copy of CBL to be sent to: Ken Rennick krennick@blm.gov, Monica Kuehling mkuehling@state.nm.gov, Loren Diede DJR, ldiede@djrlc.com, and Scott Lindsay, DJR, slindsay@djrlc.com. P&A procedure may be modified as determined by the casing pressure test and the CBL log.
 16. Plug 3. Mancos: Mix and pump a balanced plug from 4510-4410'. Pump water to ensure tubing is clear.
 17. Plug 4. Mesa Verde: Mix and pump a balanced plug from 3655-3555'. Pump water to ensure tubing is clear.
 18. Plug 5: Chacra: Perf holes at 2568'. Set CR at 2518'. Pump sufficient volume to bring TOC to 2468' inside and outside.
 19. Plug 6. Pictured Cliffs, Fruitland, Kirtland, and Ojo Alamo: Mix and pump a balanced plug from 2140-1572'. Pump water to ensure tubing is clear.
 20. Plug 7: Nacimiento: Mix and pump a balanced plug from 1280-1180'. Pump water to ensure tubing is clear.
 21. Plug 8: Surface casing shoe and surface: Perf holes at 272'. Tie onto 4-1/2" casing and mix and pump sufficient cement to bring cement to surface inside and outside 4-1/2" casing.
 22. RD cementing equipment. Cut off wellhead, fill any exposed annulus with cement, as necessary. **Install SURFACE P&A marker as per BIA requirements.** Record GPS coordinates for P&A marker and the Final P&A Report. Photograph the P&A marker and attach to the report.
 23. RD and MO all rig and cement equipment. Assure that location is free of trash and contamination before moving off.
 24. Send all reports and attachments to DJR Aztec office for regulatory filings.
- Note: All cement is to be Class G mixed at 15.8 ppg, yield 1.15 cu ft / sx. Cement volumes are based on inside capacities + 50' excess and outside capacities + 100% excess. Surface PxA marker is to be installed at surface, 12"x18", and exposed at the reclaimed GL surface.**

Current Wellbore Diagram
DJR Operating, LLC
Jicarilla 430 5
API # 30-043-20673
SE/NE, Unit H, Sec 35, T23N, R5W
Sandoval County, NM

GL 6821'
 KB 6834'
 Spud Date 7/10/1983

SURF CSG

Hole size 12.25"
 Csg Size: 8.625
 Wt: 24#
 Grade: J-55
 ID: 8.097"
 Depth 212'
 Csq cap ft³: 0.3575
 TOC: Surf

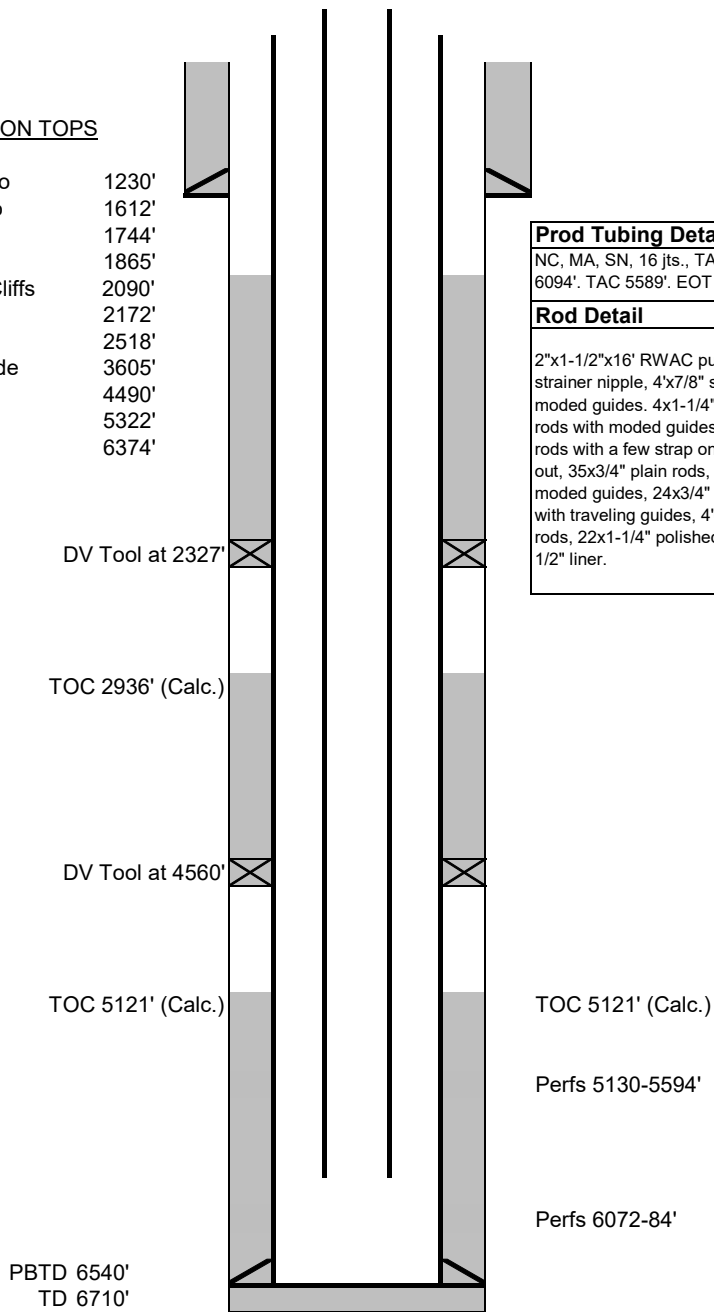
FORMATION TOPS

Nacimiento	1230'
Ojo Alamo	1612'
Kirtland	1744'
Fruitland	1865'
Pictured Cliffs	2090'
Lewis	2172'
Chacra	2518'
Mesa Verde	3605'
Mancos	4490'
Gallup	5322'
Dakota	6374'

PROD CSG

Hole size 7.875
 Csg Size: 4.5"
 Wt: 10.5#
 Grade: K-55
 ID: 4.052"
 Depth 6710'
 Csq cap ft³: 0.0895
 Csq/Csq Ann ft³: 0.2471
 Csq/OH cap ft³: 0.2278

TOC: Stg 1 5121' (Calc.)
 TOC: Stg 2 2936' Calc.)
 TOC: Stg 3 650' (TS)

**Prod Tubing Detail:**

NC, MA, SN, 16 jts., TAC, 175 jts. SN
 6094'. TAC 5589'. EOT 6126'.

Rod Detail

2"x1-1/2"x16" RWAC pump with 1"x12" strainer nipple, 4"x7/8" stabilizer sub with moded guides. 4x1-1/4" K-bars, 18x3/4" rods with moded guides, 30x3/4" plain rods with a few strap on guides spread out, 35x3/4" plain rods, 53x3/4" with moded guides, 24x3/4" plain rods, 77x3/4" with traveling guides, 4'6'6"x3/4" pony rods, 22x1-1/4" polished rod with 10"x1-1/2" liner.

Proposed P&A Wellbore Diagram

DJR Operating, LLC

Jicarilla 430 5

API # 30-043-20673

SE/NE, Unit H, Sec 35, T23N, R5W

Sandoval County, NM

GL 6821'

KB 6834'

Spud Date 7/10/1983

SURF CSG

Hole size 12.25"
 Csg Size: 8.625
 Wt: 24#
 Grade: J-55
 ID: 8.097"
 Depth 212'
 Csg cap ft3: 0.3575
 TOC: Surf

FORMATION TOPS

Nacimiento	1230'
Ojo Alamo	1612'
Kirtland	1744'
Fruitland	1865'
Pictured Cliffs	2090'
Lewis	2172'
Chacra	2518'
Mesa Verde	3605'
Mancos	4490'
Gallup	5322'

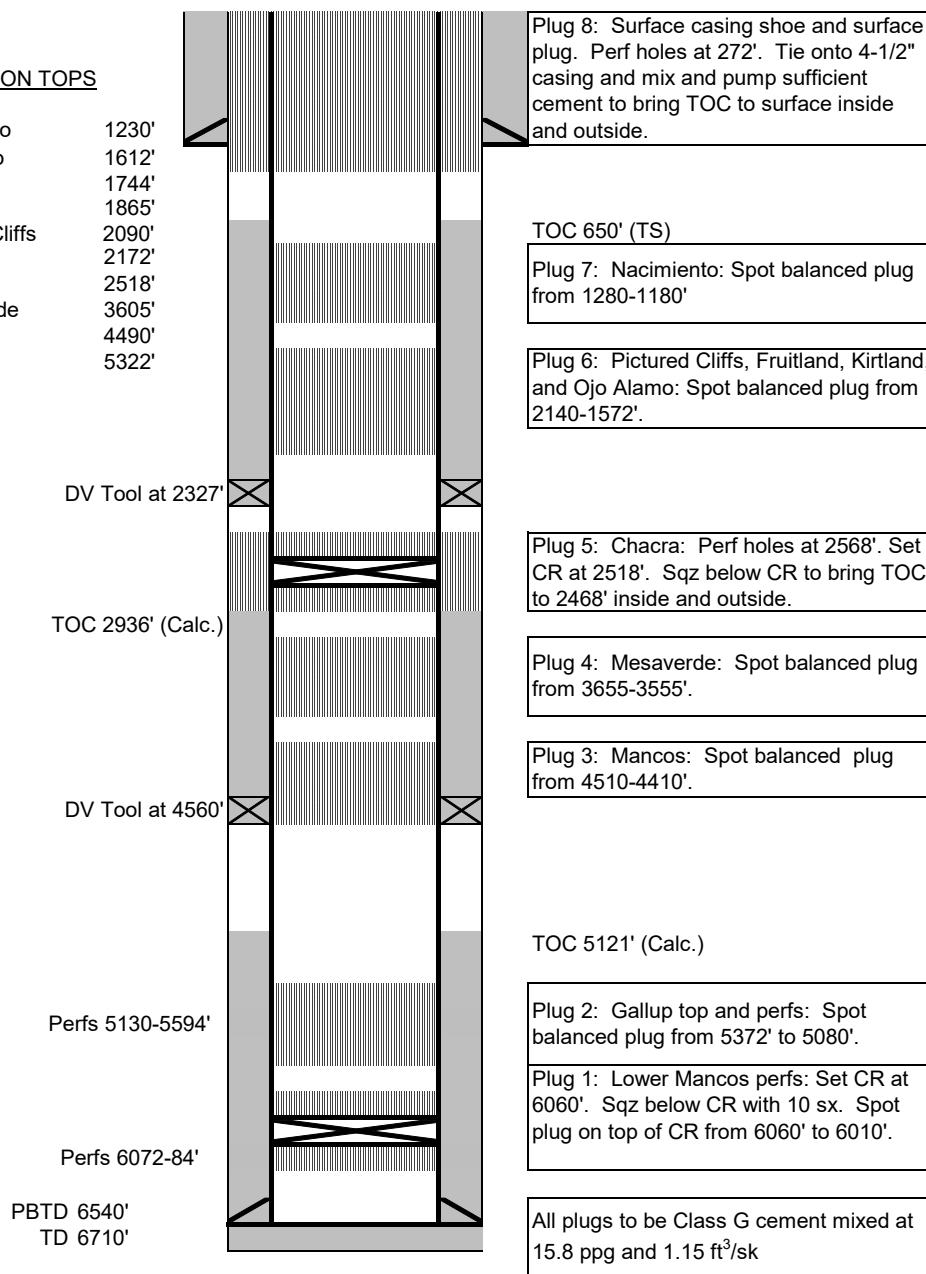
PROD CSG

Hole size 7.875
 Csg Size: 4.5"
 Wt: 10.5#
 Grade: K-55
 ID: 4.052"
 Depth 6710'
 Csg cap ft3: 0.0895
 Csg/Csg Ann ft3: 0.2471
 Csg/OH cap ft3: 0.2278

TOC: Stg 1 5121' (Calc.)

TOC: Stg 2 2936' Calc.)

TOC: Stg 3 650' (TS)



**UNITED STATES DEPARTMENT OF THE INTERIOR
BUREAU OF LAND MANAGEMENT
FARMINGTON DISTRICT OFFICE
6251 COLLEGE BLVD.
FARMINGTON, NEW MEXICO 87402**

AFMSS 2 Sundry ID 2663965

Attachment to notice of Intention to Abandon

Well: Jicarilla 430 5

CONDITIONS OF APPROVAL

1. Plugging operations authorized are subject to the attached "General Requirements for Permanent Abandonment of Wells on Federal and Indian Lease."
2. Farmington Office is to be notified at least 24 hours before the plugging operations commence at (505) 564-7750.

You are also required to place cement excesses per 4.2 and 4.4 of the attached General Requirements.

Office Hours: 7:45 a.m. to 4:30 p.m.

K. Rennick 3/29/2022

**GENERAL REQUIREMENTS FOR
PERMANENT ABANDONMENT OF WELLS ON FEDERAL AND INDIAN LEASES
FARMINGTON FIELD OFFICE**

1.0 The approved plugging plans may contain variances from the following minimum general requirements.

1.1 Modification of the approved plugging procedure is allowed only with the prior approval of the Authorized Officer, Farmington Field Office.

1.2 Requirements may be added to address specific well conditions.

2.0 Materials used must be accurately measured. (densometer/scales)

3.0 A tank or lined pit must be used for containment of any fluids from the wellbore during plugging operations and all pits are to be fenced with woven wire. These pits will be fenced on three sides and once the rig leaves location, the fourth side will be fenced.

3.1 Pits are not to be used for disposal of any hydrocarbons. If hydrocarbons are present in the pit, the fluids must be removed prior to filling in.

4.0 All cement plugs are to be placed through a work string. Cement may be bull-headed down the casing with prior approval. Cement caps on top of bridge plugs or cement retainers may be placed by dump bailer.

4.1 The cement shall be as specified in the approved plugging plan.

4.2 All cement plugs placed inside casing shall have sufficient volume to fill a minimum of 100' of the casing, or annular void(s) between casings, plus an excess volume sufficient to provide for 50 linear feet of fill above the plug.

4.3 Surface plugs may be no less than 50' in length.

4.4 All cement plugs placed to fill annular void(s) between casing and the formation shall be of sufficient volume to fill a minimum of 100' of the annular space plus 100% excess, calculated using the bit size, or 100' of annular capacity, determined from a caliper log, plus an excess volume sufficient to provide for 50 linear feet of fill above the plug.

4.5 All cement plugs placed to fill an open hole shall be of sufficient volume to fill a minimum of 100' of hole, as calculated from a caliper log, plus an excess volume sufficient to provide for 50 linear feet of fill above the plug. In the absence of a caliper log, an excess of 100% shall be required.

4.6 A cement bond log or other accepted cement evaluation tool is required to be run if one had not been previously ran or cement did not circulate to surface during the original casing cementing job or subsequent cementing jobs.

5.0 All cement plugs spotted across, or above, any exposed zone(s), when; the wellbore is not full of fluid or the fluid level will not remain static, and in the case of lost circulation or partial returns during cement placement, shall be tested by tagging with the work string.

- 5.1 The top of any cement plug verified by tagging must be at or above the depth specified in the approved plan, without regard to any excess.
- 5.2 Testing will not be required for any cement plug that is mechanically contained by use of a bridge plug and/or cement retainer, if casing integrity has been established.
- 5.3 Any cement plug which is the only isolating medium, for a fresh water interval or a zone containing a prospectively valuable deposit of minerals, shall be tested by tagging.
- 5.4 If perforations are required below the surface casing shoe, a 30 minute minimum wait time will be required to determine if gas and/or water flows are present. If flow is present, the well will be shut-in for a minimum of one hour and the pressure recorded. Short or long term venting may be necessary to evacuate trapped gas. **If only a water flow occurs with no associated gas, shut well in and record the pressures. Contact the Engineer as it may be necessary to change the cement weight and additives.**

6.0 Before setting any cement plugs the hole needs to be rolled. All wells are to be controlled by means of a fluid that is to be of a weight and consistency necessary to stabilize the wellbore. This fluid shall be left in place as filler between all plugs.

- 6.1 Drilling mud may be used as the wellbore fluid in open hole plugging operations.
- 6.2 The wellbore fluid used in cased holes shall be of sufficient weight to balance known pore pressures in all exposed formations.

7.0 A blowout preventer and related equipment (BOPE) shall be installed and tested prior to working in a wellbore with any exposed zone(s); (1) that are over pressured, (2) where the pressures are unknown, or (3) known to contain H₂S.

8.0 Within 30 days after plugging work is completed, file a Sundry Notice, Subsequent Report of Abandonment (Form 3160-5), five copies, with the Field Manager, Bureau of Land Management, 6251 College Blvd., Suite A, Farmington, NM 87402. The report should show the manner in which the plugging work was carried out, the extent, by depth(s), of cement plugs placed, and the size and location, by depth(s), of casing left in the well. Show date well was plugged.

9.0 All permanently abandoned wells are to be marked with a permanent monument as specified in 43 CFR 3162.6(d). Unless otherwise approved.

10.0 If this well is located in a Specially Designated Area (SDA), compliance with the appropriate seasonal closure requirements will be necessary.

All of the above are minimum requirements. Failure to comply with the above conditions of approval may result in an assessment for noncompliance and/or a Shut-in Order being issued pursuant to 43 CFR 3163.1. You are further advised that any instructions, orders or decisions issued by the Bureau of Land Management are subject to administrative review pursuant to 43 CFR 3165.3 and appeal pursuant to 43 CFR 3165.4 and 43 CFR 4.700.

(October 2012 Revision)

BLM FLUID MINERALS P&A Geologic Report

Date Completed: 03/29/2022

Well No. Jicarilla 430 5 (API# 30-043-20673)	Location	1650	FNL	&	790	FEL
Lease No. JIC430	Sec. 35	T23N			R5W	
Operator DJR Operating, LLC	County	Sandoval		State	New Mexico	
Total Depth 6710'	PBTD 6540'	Formation Perforations in the Gallup and Lower Mancos				
Elevation (GL) 6821'		Elevation (KB) 6834'				

Geologic Formations	Est. Top	Est. Bottom	Log Top	Log Bottom	Remarks
San Jose Fm					Surface/freshwater sands
Nacimiento Fm			1230		Possible freshwater sands
Ojo Alamo Ss			1612		Aquifer (possible freshwater)
Kirtland Shale			1744		
Fruitland Fm			1855		Coal/Gas/Possible water
Pictured Cliffs Ss			2090		Gas
Lewis Shale			2172		
Chacra			2518		Gas
Cliff House			3605		Water/Possible gas
Menefee Fm					Coal/Ss/Water/Possible O&G
Point Lookout Ss					Probable water/Possible O&G
Mancos			4490		Water/Possible gas
Gallup			5322		O&G/Water
Greenhorn					
Graneros Shale					
Dakota Ss					O&G/Water

Remarks:

P & A

Reference Well:

- Perforations located at 5130 to 5594', in the Gallup. And another set of perforations located 6072 to 6084', in the Lower Mancos.

Prepared by: Kenneth Rennick

District I
1625 N. French Dr., Hobbs, NM 88240
Phone:(575) 393-6161 Fax:(575) 393-0720
District II
811 S. First St., Artesia, NM 88210
Phone:(575) 748-1283 Fax:(575) 748-9720
District III
1000 Rio Brazos Rd., Aztec, NM 87410
Phone:(505) 334-6178 Fax:(505) 334-6170
District IV
1220 S. St Francis Dr., Santa Fe, NM 87505
Phone:(505) 476-3470 Fax:(505) 476-3462

State of New Mexico
Energy, Minerals and Natural Resources
Oil Conservation Division
1220 S. St Francis Dr.
Santa Fe, NM 87505

CONDITIONS

Action 94163

CONDITIONS

Operator: DJR OPERATING, LLC 1 Road 3263 Aztec, NM 87410	OGRID: 371838
	Action Number: 94163
	Action Type: [C-103] NOI Plug & Abandon (C-103F)

CONDITIONS

Created By	Condition	Condition Date
kpickford	CBL required	3/30/2022
kpickford	Notify NMOCD 24 Hours Prior to beginning operations	3/30/2022
kpickford	Adhere to BLM approved COAs and plugs. See GEO report.	3/30/2022