

District I  
1625 N. French Dr., Hobbs, NM 88240  
District II  
811 S. First St., Artesia, NM 88210  
District III  
1000 Rio Brazos Rd., Aztec, NM 87410  
District IV  
1220 S. St. Francis Dr., Santa Fe, NM 87505

State of New Mexico  
Energy, Minerals & Natural Resources  
  
Oil Conservation Division  
1220 South St. Francis Dr.  
Santa Fe, NM 87505

Form C-104  
Revised August 1, 2011  
  
Submit one copy to appropriate District Office  
  
AMENDED REPORT

I. REQUEST FOR ALLOWABLE AND AUTHORIZATION TO TRANSPORT

<sup>1</sup> Operator name and Address Longfellow Energy LP 8115 Preston Road, Suite 800 Dallas, TX 75225		<sup>2</sup> OGRID Number 372210
		<sup>3</sup> Reason for Filing Code/ Effective Date NW 11/2021
<sup>4</sup> API Number 30 – 015-48311	<sup>5</sup> Pool Name Empire; Glorieta - Yeso	<sup>6</sup> Pool Code 96210
<sup>7</sup> Property Code 330802	<sup>8</sup> Property Name Ozzy Federal Com 18C	<sup>9</sup> Well Number 002H

II. <sup>10</sup> Surface Location

UL or lot no. I	Section 13	Township 17S	Range 28E	Lot Idn	Feet from the 1615	North/South Line South	Feet from the 765	East/West line East	County Eddy
--------------------	---------------	-----------------	--------------	---------	-----------------------	---------------------------	----------------------	------------------------	----------------

<sup>11</sup> Bottom Hole Location

UL or lot no. I	Section 18	Township 17S	Range 29E	Lot Idn	Feet from the 1885	North/South line South	Feet from the 96	East/West line East	County Eddy
<sup>12</sup> Lse Code F	<sup>13</sup> Producing Method Code P	<sup>14</sup> Gas Connection Date 11/23/2021	<sup>15</sup> C-129 Permit Number	<sup>16</sup> C-129 Effective Date	<sup>17</sup> C-129 Expiration Date				

III. Oil and Gas Transporters

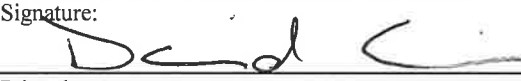
<sup>18</sup> Transporter OGRID	<sup>19</sup> Transporter Name and Address	<sup>20</sup> O/G/W
33479	Holly Frontier Refining and Marketing LLC 10 Desta Drive, Suite 350 W Midland, TX 79705	Oil
36785	DCP Operating Company LP	Gas

IV. Well Completion Data

<sup>21</sup> Spud Date 8/27/2021	<sup>22</sup> Ready Date 12/3/2021	<sup>23</sup> TD 4639'V/9534'M	<sup>24</sup> PBDT 4639'V/9530'M	<sup>25</sup> Perforations 4,878'-9,523'	<sup>26</sup> DHC, MC
<sup>27</sup> Hole Size	<sup>28</sup> Casing & Tubing Size	<sup>29</sup> Depth Set	<sup>30</sup> Sacks Cement		
17-1/2"	13-3/8"	355'	485		
12-1/4"	9-5/8"	1258'	610		
8-3/4"	7"	3887'	1935		
8-3/4"	5-1/2"	9535'			
	2-7/8"				

V. Well Test Data

<sup>31</sup> Date New Oil 12/13/2021	<sup>32</sup> Gas Delivery Date 12/11/2021	<sup>33</sup> Test Date 12/19/2021	<sup>34</sup> Test Length 24 Hours	<sup>35</sup> Tbg. Pressure 270	<sup>36</sup> Csg. Pressure 123
<sup>37</sup> Choke Size 64/64	<sup>38</sup> Oil 248	<sup>39</sup> Water 1826	<sup>40</sup> Gas 231		<sup>41</sup> Test Method Pumping

<sup>42</sup> I hereby certify that the rules of the Oil Conservation Division have been complied with and that the information given above is true and complete to the best of my knowledge and belief. Signature: 	OIL CONSERVATION DIVISION  Approved by: <b>PATRICIA MARTINEZ</b>  Title: <b>PETROLEUM SPECIALIST</b>  Approval Date: <b>4/8/2022</b>
Printed name: David Cain  Title: Regulatory Analyst  E-mail Address: David.cain@longfellowenergy.com  Date: 4/1/2022	Phone: (972) 590-9900

District I  
1625 N. French Dr., Hobbs, NM 88240  
Phone: (575) 393-6161 Fax: (575) 393-0720  
District II  
811 S. First St., Artesia, NM 88210  
Phone: (575) 748-1283 Fax: (575) 748-9720  
District III  
1000 Rio Brazos Road, Aztec, NM 87410  
Phone: (505) 334-6178 Fax: (505) 334-6170  
District IV  
1220 S. St. Francis Dr., Santa Fe, NM 87505  
Phone: (505) 476-3460 Fax: (505) 476-3462

State of New Mexico  
Energy, Minerals & Natural Resources Department  
OIL CONSERVATION DIVISION  
1220 South St. Francis Dr.  
Santa Fe, NM 87505

Form C-102  
Revised August 1,  
2011  
Submit one copy to appropriate  
District Office

☐ AMENDED REPORT

WELL LOCATION AND ACREAGE DEDICATION PLAT

<sup>1</sup> API Number <b>30-015-48311</b>	<sup>2</sup> Pool Code <b>96210</b>	<sup>3</sup> Pool Name <b>Empire; Glorieta-Yeso</b>
<sup>4</sup> Property Code <b>330802</b>	<sup>5</sup> Property Name <b>OZZY FEDERAL COM 18C</b>	<sup>6</sup> Well Number <b>002H</b>
<sup>7</sup> OGRID No. <b>372210</b>	<sup>8</sup> Operator Name <b>LONGFELLOW ENERGY, LP</b>	<sup>9</sup> Elevation <b>3698.5</b>

<sup>10</sup> Surface Location

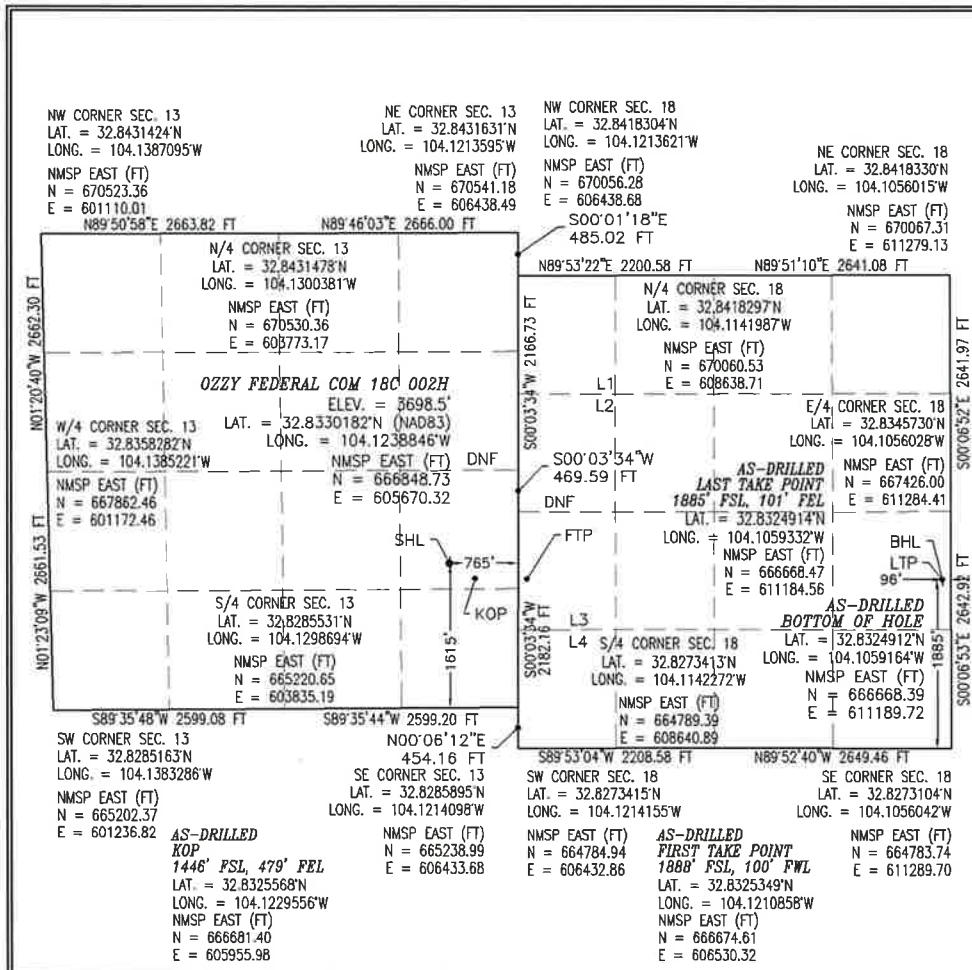
UL or lot no.	Section	Township	Range	Lot Idn	Feet from the	North/South line	Feet from the	East/West line	County
<b>I</b>	<b>13</b>	<b>17 S</b>	<b>28 E</b>		<b>1615</b>	<b>SOUTH</b>	<b>765</b>	<b>EAST</b>	<b>EDDY</b>

<sup>11</sup> Bottom Hole Location If Different From Surface

UL or lot no.	Section	Township	Range	Lot Idn	Feet from the	North/South line	Feet from the	East/West line	County
<b>I</b>	<b>18</b>	<b>17 S</b>	<b>29 E</b>		<b>1885</b>	<b>SOUTH</b>	<b>96</b>	<b>EAST</b>	<b>EDDY</b>

<sup>12</sup> Dedicated Acres <b>146.92</b>	<sup>13</sup> Joint or Infill	<sup>14</sup> Consolidation Code <b>C</b>	<sup>15</sup> Order No.
--	-------------------------------	--	-------------------------

No allowable will be assigned to this completion until all interests have been consolidated or a non-standard unit has been approved by the division.



<sup>17</sup> OPERATOR CERTIFICATION

I hereby certify that the information contained herein is true and complete to the best of my knowledge and belief, and that this organization either owns a working interest or unleased mineral interest in the land including the proposed bottom hole location or has a right to drill this well at this location pursuant to a contract with an owner of such a mineral or working interest, or to a voluntary pooling agreement or a compulsory pooling order heretofore entered by the division.

Signature: *David Cain* Date: **11/23/2021**

Printed Name: **David Cain**

E-mail Address: **david.cain@longfellowenergy.com**

<sup>18</sup> SURVEYOR CERTIFICATION

I hereby certify that the well location shown on this plat was plotted from field notes of actual surveys made by me or under my supervision, and that the same is true and correct to the best of my belief.

OCTOBER 7, 2021

Date of Survey

Signature and Seal of Professional Surveyor: *William F. Jaramillo*

Certificate Number: **WILLIAM F. JARAMILLO, L.S. 12797**

NO. 8390A

Intent ☐ As Drilled ☒

API # <b>30-015-48311</b>		
Operator Name: <b>LONGFELLOW ENERGY, LP</b>	Property Name: <b>OZZY FEDERAL COM 18C</b>	Well Number <b>002H</b>

Kick Off Point (KOP)

UL <b>I</b>	Section <b>13</b>	Township <b>17S</b>	Range <b>28E</b>	Lot	Feet <b>1446</b>	From N/S <b>SOUTH</b>	Feet <b>479</b>	From E/W <b>EAST</b>	County <b>EDDY</b>
Latitude <b>32.8325568</b>					Longitude <b>104.1229556</b>			NAD <b>83</b>	

First Take Point (FTP)

UL <b>I</b>	Section <b>18</b>	Township <b>17S</b>	Range <b>29E</b>	Lot <b>3</b>	Feet <b>1888</b>	From N/S <b>SOUTH</b>	Feet <b>100</b>	From E/W <b>WEST</b>	County <b>EDDY</b>
Latitude <b>32.8325349</b>					Longitude <b>104.1210858</b>			NAD <b>83</b>	

Last Take Point (LTP)

UL <b>I</b>	Section <b>18</b>	Township <b>17S</b>	Range <b>29E</b>	Lot	Feet <b>1885</b>	From N/S <b>SOUTH</b>	Feet <b>101</b>	From E/W <b>EAST</b>	County <b>EDDY</b>
Latitude <b>32.8324914</b>					Longitude <b>104.1059332</b>			NAD <b>83</b>	

Is this well the defining well for the Horizontal Spacing Unit? ☐Is this well an infill well? ☐

If infill is yes please provide API if available, Operator Name and well number for Defining well for Horizontal Spacing Unit.

API #		
Operator Name:	Property Name:	Well Number

KZ 06/29/2018



# Longfellow Energy

Eddy Co., NM (Nad-83)  
OZZY FED COM 18C  
002H

Wellbore #1

Survey: Survey #1

## Standard Survey Report

07 September, 2021





## Survey Report



<b>Company:</b>	Longfellow Energy	<b>Local Co-ordinate Reference:</b>	Well 002H
<b>Project:</b>	Eddy Co., NM (Nad-83)	<b>TVD Reference:</b>	EST RKB @ 3715.70usft
<b>Site:</b>	OZZY FED COM 18C	<b>MD Reference:</b>	EST RKB @ 3715.70usft
<b>Well:</b>	002H	<b>North Reference:</b>	Grid
<b>Wellbore:</b>	Wellbore #1	<b>Survey Calculation Method:</b>	Minimum Curvature
<b>Design:</b>	Wellbore #1	<b>Database:</b>	WBDS_SQL_2

<b>Project</b>	Eddy Co., NM (Nad-83)		
<b>Map System:</b>	US State Plane 1983	<b>System Datum:</b>	Mean Sea Level
<b>Geo Datum:</b>	North American Datum 1983		
<b>Map Zone:</b>	New Mexico Eastern Zone		

Site		OZZY FED COM 18C			
Site Position:		Northing:	666,873.72 usft	Latitude:	32.833087
From:	Map	Easting:	605,670.34 usft	Longitude:	-104.123885
Position Uncertainty:	0.00 usft	Slot Radius:	13.200 in	Grid Convergence:	0.114 °

Well	002H					
Well Position	+N/-S	0.00 usft	Northing:	666,848.73 usft	Latitude:	32.833018
	+E/-W	0.00 usft	Easting:	605,670.32 usft	Longitude:	-104.123885
Position Uncertainty		0.00 usft	Wellhead Elevation:	usft	Ground Level:	3,698.70 usft

<b>Wellbore</b>	Wellbore #1				
<b>Magnetics</b>	<b>Model Name</b>	<b>Sample Date</b>	<b>Declination (°)</b>	<b>Dip Angle (°)</b>	<b>Field Strength (nT)</b>
	IGRF2020	6/2/2021	6.854	60.372	47,797.83631567

<b>Design</b>	Wellbore #1				
<b>Audit Notes:</b>					
<b>Version:</b>	1.0	<b>Phase:</b>	ACTUAL	<b>Tie On Depth:</b>	0.00
<b>Vertical Section:</b>	<b>Depth From (TVD) (usft)</b>	<b>+N/-S (usft)</b>	<b>+E/-W (usft)</b>	<b>Direction (°)</b>	
	0.00	0.00	0.00	89.86	

<b>Survey Program</b>	<b>Date</b>	9/7/2021			
<b>From (usft)</b>	<b>To (usft)</b>	<b>Survey (Wellbore)</b>	<b>Tool Name</b>	<b>Description</b>	
158.00	9,537.00	Survey #1 (Wellbore #1)	MWD+IGRF	OWSG MWD + IGRF or WMM	

<b>Survey</b>										
<b>Measured Depth (usft)</b>	<b>Inclination (°)</b>	<b>Azimuth (°)</b>	<b>Vertical Depth (usft)</b>	<b>+N/-S (usft)</b>	<b>+E/-W (usft)</b>	<b>Vertical Section (usft)</b>	<b>Dogleg Rate (°/100ft)</b>	<b>Build Rate (°/100ft)</b>	<b>Turn Rate (°/100ft)</b>	
0.00	0.00	0.00	0.00	0.00	0.00	0.00	0.00	0.00	0.00	
158.00	1.19	139.45	157.99	-1.25	1.07	1.06	0.75	0.75	0.00	
218.00	1.23	123.99	217.98	-2.08	2.01	2.00	0.55	0.07	-25.77	
293.00	2.02	121.61	292.94	-3.22	3.80	3.79	1.06	1.05	-3.17	
395.00	2.68	128.73	394.86	-5.66	7.19	7.18	0.71	0.65	6.98	
485.00	4.18	118.45	484.70	-8.54	11.72	11.69	1.79	1.67	-11.42	
574.00	5.32	117.92	573.39	-12.01	18.21	18.18	1.28	1.28	-0.60	
665.00	5.67	118.98	663.97	-16.17	25.87	25.83	0.40	0.38	1.16	
756.00	6.15	118.98	754.49	-20.71	34.07	34.02	0.53	0.53	0.00	
844.00	5.27	121.44	842.05	-25.10	41.64	41.58	1.04	-1.00	2.80	



## Survey Report



<b>Company:</b>	Longfellow Energy	<b>Local Co-ordinate Reference:</b>	Well 002H
<b>Project:</b>	Eddy Co., NM (Nad-83)	<b>TVD Reference:</b>	EST RKB @ 3715.70usft
<b>Site:</b>	OZZY FED COM 18C	<b>MD Reference:</b>	EST RKB @ 3715.70usft
<b>Well:</b>	002H	<b>North Reference:</b>	Grid
<b>Wellbore:</b>	Wellbore #1	<b>Survey Calculation Method:</b>	Minimum Curvature
<b>Design:</b>	Wellbore #1	<b>Database:</b>	WBDS_SQL_2

Survey									
Measured Depth (usft)	Inclination (°)	Azimuth (°)	Vertical Depth (usft)	+N/-S (usft)	+E/-W (usft)	Vertical Section (usft)	Dogleg Rate (°/100ft)	Build Rate (°/100ft)	Turn Rate (°/100ft)
934.00	5.45	121.26	931.66	-29.47	48.82	48.75	0.20	0.20	-0.20
1,025.00	5.23	123.37	1,022.26	-34.00	55.98	55.90	0.32	-0.24	2.32
1,110.00	5.23	124.07	1,106.91	-38.30	62.42	62.33	0.08	0.00	0.82
1,197.00	4.92	124.16	1,193.57	-42.61	68.80	68.69	0.36	-0.36	0.10
1,290.00	4.79	121.17	1,286.23	-46.86	75.42	75.30	0.31	-0.14	-3.22
1,377.00	4.26	120.82	1,372.96	-50.40	81.30	81.18	0.61	-0.61	-0.40
1,464.00	4.04	120.47	1,459.73	-53.61	86.72	86.59	0.25	-0.25	-0.40
1,550.00	4.70	123.63	1,545.48	-57.10	92.26	92.12	0.82	0.77	3.67
1,635.00	4.53	127.85	1,630.21	-61.08	97.81	97.66	0.45	-0.20	4.96
1,723.00	4.88	130.23	1,717.91	-65.63	103.41	103.25	0.46	0.40	2.70
1,808.00	6.20	113.18	1,802.52	-69.78	110.39	110.22	2.47	1.55	-20.06
1,893.00	5.89	111.24	1,887.04	-73.16	118.68	118.50	0.44	-0.36	-2.28
1,984.00	4.92	119.59	1,977.64	-76.78	126.43	126.24	1.37	-1.07	9.18
2,071.00	4.40	118.01	2,064.35	-80.19	132.62	132.42	0.62	-0.60	-1.82
2,161.00	4.13	118.71	2,154.10	-83.37	138.51	138.30	0.31	-0.30	0.78
2,250.00	4.00	133.65	2,242.88	-87.05	143.56	143.35	1.20	-0.15	16.79
2,337.00	4.44	138.49	2,329.65	-91.67	147.99	147.77	0.65	0.51	5.56
2,426.00	5.36	122.58	2,418.32	-96.49	153.78	153.54	1.83	1.03	-17.88
2,515.00	6.02	121.00	2,506.88	-101.13	161.28	161.03	0.76	0.74	-1.78
2,604.00	5.76	119.15	2,595.41	-105.71	169.18	168.92	0.36	-0.29	-2.08
2,692.00	5.67	117.75	2,682.98	-109.88	176.88	176.62	0.19	-0.10	-1.59
2,780.00	5.80	117.22	2,770.54	-113.94	184.69	184.41	0.16	0.15	-0.60
2,869.00	5.27	119.77	2,859.12	-118.03	192.23	191.94	0.66	-0.60	2.87
2,956.00	5.14	118.45	2,945.76	-121.87	199.13	198.83	0.20	-0.15	-1.52
3,043.00	5.19	117.48	3,032.41	-125.54	206.05	205.74	0.12	0.06	-1.11
3,130.00	4.04	117.13	3,119.13	-128.75	212.26	211.95	1.32	-1.32	-0.40
3,218.00	3.91	121.00	3,206.91	-131.71	217.59	217.27	0.34	-0.15	4.40
3,305.00	4.31	122.23	3,293.69	-134.98	222.90	222.57	0.47	0.46	1.41
3,394.00	4.66	120.73	3,382.42	-138.61	228.84	228.50	0.41	0.39	-1.69
3,481.00	4.70	119.86	3,469.13	-142.19	234.97	234.62	0.09	0.05	-1.00
3,569.00	4.62	122.14	3,556.84	-145.87	241.10	240.74	0.23	-0.09	2.59
3,656.00	4.48	117.92	3,643.56	-149.33	247.07	246.70	0.42	-0.16	-4.85
3,743.00	5.41	122.14	3,730.24	-153.10	253.54	253.17	1.15	1.07	4.85
3,829.00	5.67	122.93	3,815.84	-157.57	260.54	260.15	0.32	0.30	0.92
3,917.00	5.54	121.96	3,903.42	-162.18	267.79	267.39	0.18	-0.15	-1.10
4,004.00	8.48	104.83	3,989.77	-166.05	277.56	277.15	4.11	3.38	-19.69
4,047.00	13.80	95.60	4,031.94	-167.36	285.73	285.32	13.01	12.37	-21.47
4,089.00	17.27	93.58	4,072.40	-168.24	296.95	296.53	8.36	8.26	-4.81
4,132.00	21.85	93.40	4,112.91	-169.11	311.31	310.90	10.65	10.65	-0.42
4,175.00	26.20	93.14	4,152.18	-170.11	328.79	328.37	10.12	10.12	-0.60
4,218.00	29.10	91.91	4,190.26	-170.98	348.72	348.30	6.87	6.74	-2.86
4,262.00	30.20	91.20	4,228.50	-171.56	370.48	370.06	2.62	2.50	-1.61
4,305.00	34.73	91.38	4,264.77	-172.09	393.55	393.12	10.54	10.53	0.42
4,349.00	39.12	92.52	4,299.94	-173.00	419.96	419.53	10.10	9.98	2.59





## Survey Report



<b>Company:</b>	Longfellow Energy	<b>Local Co-ordinate Reference:</b>	Well 002H
<b>Project:</b>	Eddy Co., NM (Nad-83)	<b>TVD Reference:</b>	EST RKB @ 3715.70usft
<b>Site:</b>	OZZY FED COM 18C	<b>MD Reference:</b>	EST RKB @ 3715.70usft
<b>Well:</b>	002H	<b>North Reference:</b>	Grid
<b>Wellbore:</b>	Wellbore #1	<b>Survey Calculation Method:</b>	Minimum Curvature
<b>Design:</b>	Wellbore #1	<b>Database:</b>	WBDS_SQL_2

Survey									
Measured Depth (usft)	Inclination (°)	Azimuth (°)	Vertical Depth (usft)	+N/-S (usft)	+E/-W (usft)	Vertical Section (usft)	Dogleg Rate (°/100ft)	Build Rate (°/100ft)	Turn Rate (°/100ft)
4,392.00	42.33	93.31	4,332.52	-174.43	447.97	447.54	7.56	7.47	1.84
4,436.00	45.19	92.52	4,364.30	-175.97	478.36	477.93	6.62	6.50	-1.80
4,480.00	50.02	91.03	4,393.95	-176.96	510.83	510.39	11.26	10.98	-3.39
4,522.00	53.58	89.53	4,419.92	-177.11	543.83	543.39	8.93	8.48	-3.57
4,566.00	57.54	88.57	4,444.80	-176.50	580.10	579.67	9.18	9.00	-2.18
4,666.00	58.07	88.21	4,498.08	-174.13	664.69	664.26	0.61	0.53	-0.36
4,698.00	61.01	89.09	4,514.30	-173.48	692.26	691.84	9.49	9.19	2.75
4,742.00	66.99	90.68	4,533.59	-173.41	731.79	731.36	13.97	13.59	3.61
4,785.00	74.11	91.64	4,547.89	-174.24	772.30	771.87	16.69	16.56	2.23
4,828.00	80.84	91.47	4,557.21	-175.38	814.24	813.81	15.66	15.65	-0.40
4,871.00	85.80	91.29	4,562.21	-176.41	856.92	856.49	11.54	11.53	-0.42
4,960.00	90.90	91.20	4,564.78	-178.34	945.83	945.40	5.73	5.73	-0.10
5,045.00	92.53	90.15	4,562.23	-179.34	1,030.79	1,030.34	2.28	1.92	-1.24
5,132.00	91.56	89.62	4,559.13	-179.17	1,117.73	1,117.29	1.27	-1.11	-0.61
5,255.00	90.68	89.36	4,556.72	-178.07	1,240.70	1,240.26	0.75	-0.72	-0.21
5,343.00	87.21	90.24	4,558.34	-177.76	1,328.67	1,328.23	4.07	-3.94	1.00
5,428.00	85.54	90.59	4,563.72	-178.38	1,413.49	1,413.05	2.01	-1.96	0.41
5,516.00	87.34	90.76	4,569.18	-179.41	1,501.31	1,500.87	2.05	2.05	0.19
5,602.00	88.44	90.94	4,572.35	-180.69	1,587.25	1,586.80	1.30	1.28	0.21
5,689.00	88.88	91.12	4,574.38	-182.25	1,674.21	1,673.76	0.55	0.51	0.21
5,775.00	89.05	91.47	4,575.94	-184.19	1,760.17	1,759.72	0.45	0.20	0.41
5,862.00	89.27	91.91	4,577.21	-186.76	1,847.12	1,846.66	0.57	0.25	0.51
5,948.00	89.36	92.43	4,578.24	-190.02	1,933.06	1,932.59	0.61	0.10	0.60
6,036.00	89.05	92.08	4,579.46	-193.48	2,020.98	2,020.50	0.53	-0.35	-0.40
6,121.00	88.62	90.85	4,581.19	-195.65	2,105.93	2,105.45	1.53	-0.51	-1.45
6,208.00	88.04	89.80	4,583.72	-196.14	2,192.89	2,192.41	1.38	-0.67	-1.21
6,294.00	87.91	89.62	4,586.76	-195.71	2,278.84	2,278.35	0.26	-0.15	-0.21
6,381.00	88.04	90.24	4,589.84	-195.60	2,365.78	2,365.30	0.73	0.15	0.71
6,470.00	88.04	89.88	4,592.88	-195.70	2,454.73	2,454.24	0.40	0.00	-0.40
6,560.00	87.96	88.74	4,596.02	-194.61	2,544.67	2,544.18	1.27	-0.09	-1.27
6,649.00	89.19	88.39	4,598.24	-192.39	2,633.61	2,633.13	1.44	1.38	-0.39
6,738.00	89.36	88.74	4,599.36	-190.16	2,722.57	2,722.10	0.44	0.19	0.39
6,827.00	88.92	89.18	4,600.70	-188.54	2,811.55	2,811.08	0.70	-0.49	0.49
6,917.00	88.88	89.45	4,602.43	-187.47	2,901.53	2,901.06	0.30	-0.04	0.30
7,007.00	89.10	89.09	4,604.01	-186.32	2,991.50	2,991.04	0.47	0.24	-0.40
7,098.00	88.79	88.57	4,605.69	-184.46	3,082.47	3,082.01	0.67	-0.34	-0.57
7,187.00	89.27	88.21	4,607.19	-181.96	3,171.42	3,170.97	0.67	0.54	-0.40
7,277.00	88.84	88.30	4,608.68	-179.22	3,261.37	3,260.92	0.49	-0.48	0.10
7,368.00	88.48	88.39	4,610.81	-176.59	3,352.30	3,351.86	0.41	-0.40	0.10
7,453.00	88.92	88.48	4,612.74	-174.27	3,437.25	3,436.81	0.53	0.52	0.11
7,541.00	90.11	89.01	4,613.48	-172.35	3,525.22	3,524.79	1.48	1.35	0.60
7,627.00	90.42	89.09	4,613.08	-170.92	3,611.21	3,610.78	0.37	0.36	0.09
7,715.00	90.15	89.01	4,612.64	-169.46	3,699.20	3,698.77	0.32	-0.31	-0.09



## Survey Report



<b>Company:</b>	Longfellow Energy	<b>Local Co-ordinate Reference:</b>	Well 002H
<b>Project:</b>	Eddy Co., NM (Nad-83)	<b>TVD Reference:</b>	EST RKB @ 3715.70usft
<b>Site:</b>	OZZY FED COM 18C	<b>MD Reference:</b>	EST RKB @ 3715.70usft
<b>Well:</b>	002H	<b>North Reference:</b>	Grid
<b>Wellbore:</b>	Wellbore #1	<b>Survey Calculation Method:</b>	Minimum Curvature
<b>Design:</b>	Wellbore #1	<b>Database:</b>	WBDS_SQL_2

Survey										
Measured Depth (usft)	Inclination (°)	Azimuth (°)	Vertical Depth (usft)	+N/-S (usft)	+E/-W (usft)	Vertical Section (usft)	Dogleg Rate (°/100ft)	Build Rate (°/100ft)	Turn Rate (°/100ft)	
7,800.00	89.76	89.09	4,612.71	-168.05	3,784.19	3,783.76	0.47	-0.46	0.09	
7,886.00	89.76	89.45	4,613.07	-166.96	3,870.18	3,869.76	0.42	0.00	0.42	
7,972.00	90.20	89.18	4,613.10	-165.93	3,956.17	3,955.75	0.60	0.51	-0.31	
8,058.00	89.14	89.88	4,613.60	-165.22	4,042.17	4,041.75	1.48	-1.23	0.81	
8,143.00	88.92	90.24	4,615.04	-165.31	4,127.15	4,126.74	0.50	-0.26	0.42	
8,229.00	88.88	90.59	4,616.69	-165.93	4,213.14	4,212.72	0.41	-0.05	0.41	
8,316.00	89.10	90.68	4,618.22	-166.90	4,300.12	4,299.70	0.27	0.25	0.10	
8,401.00	89.32	91.03	4,619.39	-168.17	4,385.10	4,384.67	0.49	0.26	0.41	
8,492.00	88.88	90.32	4,620.82	-169.24	4,476.08	4,475.65	0.92	-0.48	-0.78	
8,580.00	89.10	90.32	4,622.37	-169.73	4,564.07	4,563.64	0.25	0.25	0.00	
8,666.00	89.19	90.94	4,623.66	-170.67	4,650.05	4,649.62	0.73	0.10	0.72	
8,751.00	89.76	91.38	4,624.44	-172.40	4,735.03	4,734.59	0.85	0.67	0.52	
8,841.00	89.05	90.94	4,625.37	-174.22	4,825.00	4,824.56	0.93	-0.79	-0.49	
8,927.00	88.40	90.41	4,627.28	-175.23	4,910.98	4,910.53	0.98	-0.76	-0.62	
9,014.00	87.78	89.97	4,630.18	-175.52	4,997.93	4,997.48	0.87	-0.71	-0.51	
9,100.00	88.00	90.15	4,633.35	-175.61	5,083.87	5,083.42	0.33	0.26	0.21	
9,187.00	88.18	90.24	4,636.25	-175.90	5,170.82	5,170.37	0.23	0.21	0.10	
9,272.00	89.27	91.03	4,638.14	-176.85	5,255.79	5,255.34	1.58	1.28	0.93	
9,360.00	89.63	90.50	4,638.99	-178.02	5,343.78	5,343.33	0.73	0.41	-0.60	
9,447.00	90.20	90.85	4,639.11	-179.05	5,430.77	5,430.32	0.77	0.66	0.40	
9,537.00	90.20	90.85	4,638.80	-180.38	5,520.76	5,520.30	0.00	0.00	0.00	

Design Targets										
Target Name	Dip Angle (°)	Dip Dir. (°)	TVD (usft)	+N/-S (usft)	+E/-W (usft)	Northing (usft)	Easting (usft)	Latitude	Longitude	
FINAL TD/ BIT PROJ	0.00	0.00	4,638.80	-180.38	5,520.76	666,668.35	611,191.09	32.832491	-104.105912	
- hit/miss target										
- Shape										
- survey hits target center										
- Point										

Survey Annotations					
Measured Depth (usft)	Vertical Depth (usft)	Local Coordinates			
		+N/-S (usft)	+E/-W (usft)	Comment	
4,757.70	4,539.39	-173.63	746.37	FINAL SECTION X-ING: 4757.70' MD/ 4539.39' TVD	
4,878.48	4,562.73	-176.57	864.38	FINAL FTP: 4878.48' MD/ 4562.73' TVD	
9,531.85	4,638.82	-180.31	5,515.61	FINAL LTP: 9531.85' MD/ 4638.82' TVD	
9,537.00	4,638.80	-180.38	5,520.76	TD: Y= 666668.35 / X= 611191.08	
9,537.00	4,638.80	-180.38	5,520.76	Final Station Closure Distance= 5523.71 / Direction= 91.87	
9,537.00	4,638.80	-180.38	5,520.76	Projection to Bit: 9537.00' MD/ 4638.80' TVD	
9,537.00	4,638.80	-180.38	5,520.76	TD: Latitude= 32.832491 / Longitude= -104.105912	

Checked By: \_\_\_\_\_ Approved By: \_\_\_\_\_ Date: \_\_\_\_\_





---

I **Larry Wright**, certify that I am employed by **Wellbenders Directional Services**. That I did on the day(s) of **08/27/21** thru **09/06/21** conduct or supervise the taking of a **MWD Survey** from a depth of **158'** to a depth of **9537'**; that the data is true, correct, complete and within the limitations of the tool as set forth by **Wellbenders Directional Services**; that I am authorized and qualified to make this report; that this survey was conducted at the request of **Longfellow Energy** for the **Ozzy Federal Com 18C 2H** API No. **30-015-48311** in **Eddy County, New Mexico**; and that I have reviewed this report and find that it conforms to the principles and procedures as set forth by **Wellbenders Directional Services**.

Larry Wright

---

1125 Beach Airport Rd, Conroe, Texas  
77301

Form 3160-5  
(June 2019)UNITED STATES  
DEPARTMENT OF THE INTERIOR  
BUREAU OF LAND MANAGEMENTFORM APPROVED  
OMB No. 1004-0137  
Expires: October 31, 2021**SUNDRY NOTICES AND REPORTS ON WELLS**  
**Do not use this form for proposals to drill or to re-enter an abandoned well. Use Form 3160-3 (APD) for such proposals.**5. Lease Serial No. **NMNM14847**

6. If Indian, Allottee or Tribe Name

**SUBMIT IN TRIPLICATE - Other instructions on page 2**

1. Type of Well

☒ Oil Well ☐ Gas Well ☐ Other2. Name of Operator **LONGFELLOW ENERGY LP**3a. Address **16803 N. Dallas Parkway, Addison, TX 75001**3b. Phone No. (include area code)  
**(672) 590-9933**

7. If Unit of CA/Agreement, Name and/or No.

8. Well Name and No. **OZZY FEDERAL COM 18C/002H**9. API Well No. **3001548311**10. Field and Pool or Exploratory Area  
**EMPIRE/GLORIETA YESO**4. Location of Well (Footage, Sec., T., R., M., or Survey Description)  
**SEC 13/T17S/R28E/NMP**11. Country or Parish, State  
**EDDY/NM****12. CHECK THE APPROPRIATE BOX(ES) TO INDICATE NATURE OF NOTICE, REPORT OR OTHER DATA**

TYPE OF SUBMISSION	TYPE OF ACTION				
<input type="checkbox"/> Notice of Intent	<input type="checkbox"/> Acidize	<input type="checkbox"/> Deepen	<input type="checkbox"/> Production (Start/Resume)	<input type="checkbox"/> Water Shut-Off	
<input checked="" type="checkbox"/> Subsequent Report	<input type="checkbox"/> Alter Casing	<input checked="" type="checkbox"/> Hydraulic Fracturing	<input type="checkbox"/> Reclamation	<input type="checkbox"/> Well Integrity	
<input type="checkbox"/> Final Abandonment Notice	<input type="checkbox"/> Casing Repair	<input type="checkbox"/> New Construction	<input type="checkbox"/> Recomplete	<input type="checkbox"/> Other	
	<input type="checkbox"/> Change Plans	<input type="checkbox"/> Plug and Abandon	<input type="checkbox"/> Temporarily Abandon		
	<input type="checkbox"/> Convert to Injection	<input type="checkbox"/> Plug Back	<input type="checkbox"/> Water Disposal		

13. Describe Proposed or Completed Operation: Clearly state all pertinent details, including estimated starting date of any proposed work and approximate duration thereof. If the proposal is to deepen directionally or recompleat horizontally, give subsurface locations and measured and true vertical depths of all pertinent markers and zones. Attach the Bond under which the work will be performed or provide the Bond No. on file with BLM/BIA. Required subsequent reports must be filed within 30 days following completion of the involved operations. If the operation results in a multiple completion or recompleat in a new interval, a Form 3160-4 must be filed once testing has been completed. Final Abandonment Notices must be filed only after all requirements, including reclamation, have been completed and the operator has detennined that the site is ready for final inspection.)

RUPU 10/11/2021. RIH & cleanout to PBD @ 9530. Pressure test casing to 7000 psi for 30 minutes, good test. Start frac ops 11/11/2021. RIH and perf from 9523-9357, 9337-9162, 9137-8967, 8947-8772, 8752-8577, 8557-8382, 8362-8187, 8167-7992, 7972-7797, 7777-7602, 7582-7407, 7387-7212, 7192-7017, 6997-6822, 6802-6627, 6607-6432, 6412-6237, 6217-6042, 6022-5847, 5827-5652, 5632-5457, 5437-5262, 5242-5067, 5047-4878. Frac in 24 stages with 4972212# sand and 297718 bbls of slickwater. 11/19/2021 rig down and cleanout.

14. I hereby certify that the foregoing is true and correct. Name (Printed/Typed)  
**DAVID CAIN / Ph: (214) 265-4715**

Title **Engineering Technologist & Regulatory Specialist**

Signature

Date

12/01/2021

**THE SPACE FOR FEDERAL OR STATE OFFICE USE**

Approved by

**Jonathon W Shepard / Ph: (575) 234-5972 / Accepted**Title **Petroleum Engineer**Date **12/02/2021**

Conditions of approval, if any, are attached. Approval of this notice does not warrant or certify that the applicant holds legal or equitable title to those rights in the subject lease which would entitle the applicant to conduct operations thereon.

Office **CARLSBAD**

Title 18 U.S.C Section 1001 and Title 43 U.S.C Section 1212, make it a crime for any person knowingly and willfully to make to any department or agency of the United States any false, fictitious or fraudulent statements or representations as to any matter within its jurisdiction.

(Instructions on page 2)

## GENERAL INSTRUCTIONS

This form is designed for submitting proposals to perform certain well operations and reports of such operations when completed as indicated on Federal and Indian lands pursuant to applicable Federal law and regulations. Any necessary special instructions concerning the use of this form and the number of copies to be submitted, particularly with regard to local area or regional procedures and practices, are either shown below, will be issued by or may be obtained from the local Federal office.

## SPECIFIC INSTRUCTIONS

*Item 4* - Locations on Federal or Indian land should be described in accordance with Federal requirements. Consult the local Federal office for specific instructions.

*Item 13*: Proposals to abandon a well and subsequent reports of abandonment should include such special information as is required by the local Federal office. In addition, such proposals and reports should include reasons for the abandonment; data on any former or present productive zones or other zones with present significant fluid contents not sealed off by cement or otherwise; depths (top and bottom) and method of placement of cement plugs; mud or other material placed below, between and above plugs; amount, size, method of parting of any casing, liner or tubing pulled and the depth to the top of any tubing left in the hole; method of closing top of well and date well site conditioned for final inspection looking for approval of the abandonment. If the proposal will involve **hydraulic fracturing operations**, you must comply with 43 CFR 3162.3-3, including providing information about the protection of usable water. Operators should provide the best available information about all formations containing water and their depths. This information could include data and interpretation of resistivity logs run on nearby wells. Information may also be obtained from state or tribal regulatory agencies and from local BLM offices.

## NOTICES

The privacy Act of 1974 and the regulation in 43 CFR 2.48(d) provide that you be furnished the following information in connection with information required by this application.

AUTHORITY: 30 U.S.C. 181 et seq., 351 et seq., 25 U.S.C. 396; 43 CFR 3160.

PRINCIPAL PURPOSE: The information is used to: (1) Evaluate, when appropriate, approve applications, and report completion of subsequent well operations, on a Federal or Indian lease; and (2) document for administrative use, information for the management, disposal and use of National Resource lands and resources, such as: (a) evaluating the equipment and procedures to be used during a proposed subsequent well operation and reviewing the completed well operations for compliance with the approved plan; (b) requesting and granting approval to perform those actions covered by 43 CFR 3162.3-2, 3162.3-3, and 3162.3-4; (c) reporting the beginning or resumption of production, as required by 43 CFR 3162.4-1(c) and (d) analyzing future applications to drill or modify operations in light of data obtained and methods used.

ROUTINE USES: Information from the record and/or the record will be transferred to appropriate Federal, State, local or foreign agencies, when relevant to civil, criminal or regulatory investigations or prosecutions in connection with congressional inquiries or to consumer reporting agencies to facilitate collection of debts owed the Government.

EFFECT OF NOT PROVIDING THE INFORMATION: Filing of this notice and report and disclosure of the information is mandatory for those subsequent well operations specified in 43 CFR 3162.3-2, 3162.3-3, 3162.3-4.

The Paperwork Reduction Act of 1995 requires us to inform you that:

The BLM collects this information to evaluate proposed and/or completed subsequent well operations on Federal or Indian oil and gas leases.

Response to this request is mandatory.

The BLM would like you to know that you do not have to respond to this or any other Federal agency-sponsored information collection unless it displays a currently valid OMB control number.

**BURDEN HOURS STATEMENT:** Public reporting burden for this form is estimated to average 8 hours per response, including the time for reviewing instructions, gathering and maintaining data, and completing and reviewing the form. Direct comments regarding the burden estimate or any other aspect of this form to U.S. Department of the Interior, Bureau of Land Management (1004-0137), Bureau Information Collection Clearance Officer (WO-630), 1849 C St., N.W., Mail Stop 401 LS, Washington, D.C. 20240

## Additional Information

### Location of Well

0. SHL: NESE / 1615 FSL / 765 FEL / TWSP: 17S / RANGE: 28E / SECTION: 13 / LAT: 32.8329505 / LONG: -104.1235919 ( TVD: 0 feet, MD: 0 feet )

PPP: NESW / 1893 FSL / 1320 FWL / TWSP: 17S / RANGE: 29E / SECTION: 18 / LAT: 32.832517 / LONG: -104.118519 ( TVD: 4550 feet, MD: 5598 feet )

PPP: LOT 3 / 1893 FSL / 0 FWL / TWSP: 17S / RANGE: 29E / SECTION: 18 / LAT: 32.832528 / LONG: -104.121407 ( TVD: 4520 feet, MD: 4715 feet )

PPP: NESE / 1429 FSL / 371 FEL / TWSP: 17S / RANGE: 28E / SECTION: 13 / LAT: 32.8325096 / LONG: -104.1226025 ( TVD: 4151 feet, MD: 4171 feet )

BHL: NESE / 1893 FSL / 20 FEL / TWSP: 17S / RANGE: 29E / SECTION: 18 / LAT: 32.8325125 / LONG: -104.1056683 ( TVD: 4550 feet, MD: 9548 feet )

CONFIDENTIAL



U.S. Department of the Interior  
BUREAU OF LAND MANAGEMENT

# Well Completion Print Report

03/15/2022

<b>Operator Name</b> LONGFELLOW ENERGY LP SHL NESE Sec 13 17S 28E	<b>Well Name</b> OZZY FEDERAL COM 18C	<b>Well Number</b> 002H	<b>US Well Number</b> 3001548311
<b>Well Type</b> OIL WELL	<b>County</b> EDDY	<b>State</b> NM	<b>Lease Number(s)</b> NMNM14847
	<b>Well Status</b> Drilling Well	<b>Agreement Name</b>	<b>Agreement Number(s)</b>
<b>Allottee/Tribe Name</b>	<b>Well Pad Name</b> Ozzy Federal	<b>Well Pad Number</b> 18C	<b>ID</b> 10400061872

## Section 1 - General

**Well Completion Report Id:** 82163**Submission Date:** N/A until DB Work**BLM Office:** Carlsbad Field Office**User:** DAVID CAIN**Title:** Engineering Technologist &**Federal/Indian:** FEDERAL**Lease Number:** NMNM14847**Lease Acres:****Agreement in place?:** NO**Federal or Indian Agreement:****Agreement Number:****Agreement Name:****Keep this Well Completion Report confidential?:** YES**APD Operator:** LONGFELLOW ENERGY  
LP

## Section 2 - Well Information

**Field/Pool or Exploratory:** Field/Pool**Pool Name:** GLORIETA YESO**Field Name:** EMPIRE**Well Type:** OIL WELL**Spud Date:** 08-27-2021**Date Total Measured Depth Reached:** 09-06-2021**Drill & Abandon or Ready To Produce:** READY TO PRODUCE**Well Class:** HORIZONTAL

## Section 3 - Geologic Formations

Formation Name	Lithology	Describe Lithology	Elevation	TVD	MD	Mineral Resources	Describe Mineral Resources
QUEEN	SANDSTONE		2045	1671	1676	NONE	
GRAYBURG	DOLOMITE		1569	2147	2153	NATURAL GAS, OIL	

<b>Operator Name</b> LONGFELLOW ENERGY LP SHL NESE Sec 13 17S 28E	<b>Well Name</b> OZZY FEDERAL COM 18C	<b>Well Number</b> 002H	<b>US Well Number</b> 3001548311
	<b>County</b> EDDY	<b>State</b> NM	<b>Lease Number(s)</b> NMNM14847
<b>Well Type</b> OIL WELL	<b>Well Status</b> Drilling Well	<b>Agreement Name</b>	<b>Agreement Number(s)</b>
<b>Allottee/Tribe Name</b>	<b>Well Pad Name</b> Ozzy Federal	<b>Well Pad Number</b> 18C	<b>ID</b> 10400061872

### Section 3 - Geologic Formations

Formation Name	Lithology	Describe Lithology	Elevation	TVD	MD	Mineral Resources	Describe Mineral Resources
SAN ANDRES	DOLOMITE		1346	2370	2378	NATURAL GAS, OIL	
GLORIETA	SANDSTONE		-34	3750	3763	NATURAL GAS, OIL	
PADDOCK	DOLOMITE		-74	3790	3803	NATURAL GAS, OIL	
BLINEBRY	DOLOMITE		-496	4212	4243	NATURAL GAS, OIL	

### Completion and Completed Intervals

#### Completion Data

Wellbore Code	Completion Code	Interval Number	Case Number	Lease Number	Well Completion Type	Describe Well Completion Type	Completion Status	Date Completed	Date First Produced	Formation	Interval Top (MD)	Interval Bottom (MD)	Interval Perforated?	Perforation Size	Number of Holes	Status of Interval
00	S1	1	NMNM14847	NMNM14847	NEW		POW	12-18-2021	12-11-2021	YESO	4878	9523	Y	.42	786	OPEN

#### Treatment Data

Wellbore Code	Completion Code	Interval Number	Interval Treated?	Treatment Type	Tottle Fluid (bbls)	Total Proppant (lbs)	Treatment Remarks
00	S1	1	Y	FRAC	297718	4972212	



<b>Operator Name</b> LONGFELLOW ENERGY LP SHL NESE Sec 13 17S 28E	<b>Well Name</b> OZZY FEDERAL COM 18C	<b>Well Number</b> 002H	<b>US Well Number</b> 3001548311
	<b>County</b> EDDY	<b>State</b> NM	<b>Lease Number(s)</b> NMNM14847
<b>Well Type</b> OIL WELL	<b>Well Status</b> Drilling Well	<b>Agreement Name</b>	<b>Agreement Number(s)</b>
<b>Allottee/Tribe Name</b>	<b>Well Pad Name</b> Ozzy Federal	<b>Well Pad Number</b> 18C	<b>ID</b> 10400061872

### Production Data

Wellbore Code	Completion Code	Interval Number	API Oil Gravity	Gas Gravity	Production Method	Describe Production	Disposition of Gas	Describe Disposition
00	S1	1	39.3	.8241	ELECTRIC PUMP SUB-SURFACE		SOLD	

### Test Data

Wellbore Code	Completion Code	Interval Number	Test Date	Hours Tested	24-Hour Rate Oil (bbls)	24-Hour Rate Gas (MCF)	24-Hour Rate Water(BWPD)	Gas-Oil Ratio (SCF/Bbl)	Choke Size	Tubing Pressure	Tubing Pressure Shut-In (psi)	Casing Pressure (psi)
00	S1	1	12/19/20 21	24	248	231	1826	931	64/64	270		123

### Well Location

Survey Type: RECTANGULAR

Survey Number: 12797

Datum: NAD83

Vertical Datum: NAVD88

Reference Datum: KB

State	Meridian	County	Latitude	Longitude	Elevation (MSL)	Lease Type	Lease Number	Plug TVD (ft)	Plug MD (ft)	Plug Type	NS-Foot	NS-Indicator	EW-Foot	EW-Indicator	Township	Range	Section	Aliquot/Lot/Tract
SHL	NEW MEXICO O	NEW MEXICO PRINCIPA	EDDY	32.83301 82	- 104.1238 846	3699	STATE	STATE			1615	FSL	765	FEL	17S	28E	13	NESE

<b>Operator Name</b> LONGFELLOW ENERGY LP SHL NESE Sec 13 17S 28E	<b>Well Name</b> OZZY FEDERAL COM 18C	<b>Well Number</b> 002H	<b>US Well Number</b> 3001548311
	<b>County</b> EDDY	<b>State</b> NM	<b>Lease Number(s)</b> NMNM14847
<b>Well Type</b> OIL WELL	<b>Well Status</b> Drilling Well	<b>Agreement Name</b>	<b>Agreement Number(s)</b>
<b>Allottee/Tribe Name</b>	<b>Well Pad Name</b> Ozzy Federal	<b>Well Pad Number</b> 18C	<b>ID</b> 10400061872

	State	Meridian	County	Latitude	Longitude	Elevation (MSL)	Lease Type	Lease Number	Plug TVD (ft)	Plug MD (ft)	Plug Type	NS-Foot	NS-Indicator	EW-Foot	EW-Indicator	Township	Range	Section	Aliquot/Lot/Tract
		L																	
KOP Well bore 00	NEW MEXICO	NEW MEXICO PRINCIPAL	EDDY	32.8325568	-104.1229556	-329	STATE	STATE				1446	FSL	479	FEL	17S	29E	13	NESE
PPP Well bore 00	NEW MEXICO	NEW MEXICO PRINCIPAL	EDDY	32.8325096	-104.1226025	-452	STATE	STATE				1429	FSL	371	FEL	17S	28E	13	NESE
PPP Well bore 00	NEW MEXICO	NEW MEXICO PRINCIPAL	EDDY	32.832535	-104.121386	-849	FEDERAL	NMNM 14847				1886	FSL	0	FWL	17S	29E	18	Lot 3
PPP Well bore 00	NEW MEXICO	NEW MEXICO PRINCIPAL	EDDY	32.83251	-104.118498	-875	STATE	STATE				1877	FSL	889	FWL	17S	29E	18	NESW
EXIT Well bore 00	NEW MEXICO	NEW MEXICO PRINCIPAL	EDDY	32.832491	-104.105912	-938	STATE	STATE				1869	FSL	91	FEL	17S	29E	18	NESE
BHL Well bore 00	NEW MEXICO	NEW MEXICO PRINCIPAL	EDDY	32.832491	-104.105912	-938	STATE	STATE				1869	FSL	91	FEL	17S	29E	18	NESE

**Casing, Liner and Tubing**

<b>Operator Name</b> LONGFELLOW ENERGY LP SHL NESE Sec 13 17S 28E	<b>Well Name</b> OZZY FEDERAL COM 18C	<b>Well Number</b> 002H	<b>US Well Number</b> 3001548311
	<b>County</b> EDDY	<b>State</b> NM	<b>Lease Number(s)</b> NMNM14847
<b>Well Type</b> OIL WELL	<b>Well Status</b> Drilling Well	<b>Agreement Name</b>	<b>Agreement Number(s)</b>
<b>Allottee/Tribe Name</b>	<b>Well Pad Name</b> Ozzy Federal	<b>Well Pad Number</b> 18C	<b>ID</b> 10400061872

### Casing and Liner

Wellbore Code	Casing String Type	Hole Size	Top Setting Depth (MD)	Bottom Setting Depth (MD)	Casing Size	Wt(lbs/ft)	Casing Grade	Describe Other Casing Grade	Joint	Other Joint	Amount Pulled (ft)
00	SURFACE	17.5	0	355	13.375	54.5	J-55		ST&C		
00	INTERMEDIATE	12.25	0	1238	9.625	36	J-55		LT&C		
00	PRODUCTION	8.75	0	3888	7.0	32	L-80		BUTT		
00	PRODUCTION	8.75	3888	9534	5.5	20	L-80		BUTT		

### Cementing

Wellbore Code	Casing String Type	Stage Tool Depth	Cement Lead Type	Cement Lead Qty (sks)	Cement Lead Yield (cu.ft/sks)	Cement Lead Top (MD)	Cement Tail Type	Cement Tail Qty (sks)	Cement Tail Yield(cu.ft/sks)	Cement Tail Top (MD)	Total (Lead + Tail) Cement Slurry Volume (bbls)
00	SURFACE		Class C	485	1.34	0					115.7
00	INTERMEDIATE		Class C	445	1.74	0	Class C	165	1.34	0	177.3
00	PRODUCTION		25/75 Poz C	295	2.16	0	Class C	1640	1.33	0	502

### Tubing

Wellbore Code	Tubing Size	Describe Other	Tubing Setting Depth (MD/ft)	Packer Depth (MD/ft)	Tubing Weight	Tubing Grade	Describe Other	Tubing Coupling	Describe Other
---------------	-------------	----------------	------------------------------	----------------------	---------------	--------------	----------------	-----------------	----------------

<b>Operator Name</b> LONGFELLOW ENERGY LP SHL NESE Sec 13 17S 28E	<b>Well Name</b> OZZY FEDERAL COM 18C	<b>Well Number</b> 002H	<b>US Well Number</b> 3001548311
	<b>County</b> EDDY	<b>State</b> NM	<b>Lease Number(s)</b> NMNM14847
<b>Well Type</b> OIL WELL	<b>Well Status</b> Drilling Well	<b>Agreement Name</b>	<b>Agreement Number(s)</b>
<b>Allottee/Tribe Name</b>	<b>Well Pad Name</b> Ozzy Federal	<b>Well Pad Number</b> 18C	<b>ID</b> 10400061872

**Tubing**

Wellbore Code	Tubing Size	Describe Other	Tubing Setting Depth (MD/ft)	Packer Depth (MD/ft)	Tubing Weight	Tubing Grade	Describe Other	Tubing Coupling	Describe Other
00	2.875		3734	3897	6	J-55			

**Logs**

Wellbore Code	Log Upload	Was Well Cored?	Was DST Run?	Directional Survey?	Geologic Report Completed?	Wellbore Diagram
00	YES	NO	NO	YES	NO	YES

<b>Operator Name</b> LONGFELLOW ENERGY LP SHL NESE Sec 13 17S 28E	<b>Well Name</b> OZZY FEDERAL COM 18C  <b>County</b> EDDY	<b>Well Number</b> 002H  <b>State</b> NM	<b>US Well Number</b> 3001548311  <b>Lease Number(s)</b> NMNM14847
<b>Well Type</b> OIL WELL	<b>Well Status</b> Drilling Well	<b>Agreement Name</b>	<b>Agreement Number(s)</b>
<b>Allottee/Tribe Name</b>	<b>Well Pad Name</b> Ozzy Federal	<b>Well Pad Number</b> 18C	<b>ID</b> 10400061872

### Operator Certification

I hereby certify that the foregoing and attached information is complete and correct as determined from all available records. Title 18 U.S.C. Section 1001 and Title 43 U.S.C. Section 1212, make it a crime for any person knowingly and willfully to make any department or agency of the United States any false, fictitious or fraudulent statements or representations as to any matter within its jurisdiction. Electronic submission of Well Completion Reports through this system satisfies regulations requiring a submission of Form 3160-4 or a Well Completion Report.

**Name:** LONGFELLOW ENERGY LP

**Signed By:** DAVID CAIN

**Title:** Engineering Technologist & **Signed on:** 03/04/2022  
Regulatory Specialist

**Street Address:** 16803 DALLAS PARKWAY

**City:** ADDISON

**State:** TX

**Zip:** 75001

**Phone:** (214)265-4715

**Email address:** DAVID.CAIN@LONGFELLOWENERGY.COM

### Field Representative

**Representative Name:**

**Street Address:**

**City:**

**State:**

**Zip:**

**Phone:**

**Extension:**

**Email address:**

### Attachments

MAINLOG\_20220304154739.pdf

Ozzy\_Federal\_Com\_18C\_2H\_FINAL\_SURVEY\_20220304154805.pdf

Ozzy\_Federal\_18\_C\_2H\_WBD\_1\_19\_22\_20220304154837.pdf

OZZY\_FEDERAL\_COM\_18C\_002H\_AS\_DRILLED\_Certified\_signed\_20220304154946.pdf

**District I**

1625 N. French Dr., Hobbs, NM 88240  
Phone:(575) 393-6161 Fax:(575) 393-0720

**District II**

811 S. First St., Artesia, NM 88210  
Phone:(575) 748-1283 Fax:(575) 748-9720

**District III**

1000 Rio Brazos Rd., Aztec, NM 87410  
Phone:(505) 334-6178 Fax:(505) 334-6170

**District IV**

1220 S. St Francis Dr., Santa Fe, NM 87505  
Phone:(505) 476-3470 Fax:(505) 476-3462

**State of New Mexico**  
**Energy, Minerals and Natural Resources**  
**Oil Conservation Division**  
**1220 S. St Francis Dr.**  
**Santa Fe, NM 87505**

ACKNOWLEDGMENTS

Action 95367

**ACKNOWLEDGMENTS**

Operator: LONGFELLOW ENERGY, LP 8115 Preston Road Dallas, TX 75225	OGRID: 372210
	Action Number: 95367
	Action Type: [C-104] Completion Packet (C-104C)

**ACKNOWLEDGMENTS**

<input checked="" type="checkbox"/>	I hereby certify that the required Water Use Report has been, or will be, submitted for this wells completion.
<input checked="" type="checkbox"/>	I hereby certify that the required FracFocus disclosure has been, or will be, submitted for this wells completion.



**District I**  
1625 N. French Dr., Hobbs, NM 88240  
Phone:(575) 393-6161 Fax:(575) 393-0720  
**District II**  
811 S. First St., Artesia, NM 88210  
Phone:(575) 748-1283 Fax:(575) 748-9720  
**District III**  
1000 Rio Brazos Rd., Aztec, NM 87410  
Phone:(505) 334-6178 Fax:(505) 334-6170  
**District IV**  
1220 S. St Francis Dr., Santa Fe, NM 87505  
Phone:(505) 476-3470 Fax:(505) 476-3462

**State of New Mexico**  
**Energy, Minerals and Natural Resources**  
**Oil Conservation Division**  
**1220 S. St Francis Dr.**  
**Santa Fe, NM 87505**

CONDITIONS  
  
Action 95367

CONDITIONS

Operator: LONGFELLOW ENERGY, LP 8115 Preston Road Dallas, TX 75225	OGRID: 372210
	Action Number: 95367
	Action Type: [C-104] Completion Packet (C-104C)

CONDITIONS

Created By	Condition	Condition Date
plmartinez	None	4/8/2022