

Form 3160-3
(June 2015)FORM APPROVED
OMB No. 1004-0137
Expires: January 31, 2018

UNITED STATES
DEPARTMENT OF THE INTERIOR
BUREAU OF LAND MANAGEMENT
APPLICATION FOR PERMIT TO DRILL OR REENTER

1a. Type of work: <input type="checkbox"/> DRILL <input type="checkbox"/> REENTER 1b. Type of Well: <input type="checkbox"/> Oil Well <input type="checkbox"/> Gas Well <input type="checkbox"/> Other 1c. Type of Completion: <input type="checkbox"/> Hydraulic Fracturing <input type="checkbox"/> Single Zone <input type="checkbox"/> Multiple Zone		5. Lease Serial No. 6. If Indian, Allottee or Tribe Name 7. If Unit or CA Agreement, Name and No. 8. Lease Name and Well No. <div style="text-align: center; font-weight: bold;">[332757]</div>	
2. Name of Operator <div style="text-align: center; font-weight: bold;">[6137]</div>		9. API Well No. <div style="text-align: center; font-weight: bold;">30-025-50050</div>	
3a. Address		3b. Phone No. (include area code)	
4. Location of Well (Report location clearly and in accordance with any State requirements. *) At surface At proposed prod. zone		10. Field and Pool, or Explorer <div style="text-align: center; font-weight: bold;">[53805/98248]</div> 11. Sec., T. R. M. or Blk. and Survey or Area	
14. Distance in miles and direction from nearest town or post office*		12. County or Parish	
13. State			
15. Distance from proposed* location to nearest property or lease line, ft. (Also to nearest drig. unit line, if any)		16. No of acres in lease	
17. Spacing Unit dedicated to this well			
18. Distance from proposed location* to nearest well, drilling, completed, applied for, on this lease, ft.		19. Proposed Depth	
20. BLM/BIA Bond No. in file			
21. Elevations (Show whether DF, KDB, RT, GL, etc.)		22. Approximate date work will start*	
23. Estimated duration			
24. Attachments The following, completed in accordance with the requirements of Onshore Oil and Gas Order No. 1, and the Hydraulic Fracturing rule per 43 CFR 3162.3-3 (as applicable)			
1. Well plat certified by a registered surveyor. 2. A Drilling Plan. 3. A Surface Use Plan (if the location is on National Forest System Lands, the SUPO must be filed with the appropriate Forest Service Office).		4. Bond to cover the operations unless covered by an existing bond on file (see Item 20 above). 5. Operator certification. 6. Such other site specific information and/or plans as may be requested by the BLM.	
25. Signature		Name (Printed/Typed)	
Title		Date	
Approved by (Signature)		Name (Printed/Typed)	
Title		Office	
Application approval does not warrant or certify that the applicant holds legal or equitable title to those rights in the subject lease which would entitle the applicant to conduct operations thereon. Conditions of approval, if any, are attached.			
Title 18 U.S.C. Section 1001 and Title 43 U.S.C. Section 1212, make it a crime for any person knowingly and willfully to make to any department or agency of the United States any false, fictitious or fraudulent statements or representations as to any matter within its jurisdiction.			

NGMP Rec 04/14/2022

KZ
04/22/2022

SL

(Continued on page 2)

*(Instructions on page 2)



Approval Date: 03/04/2022

Additional Operator Remarks

Location of Well

0. SHL: SESE / 350 FSL / 1035 FEL / TWSP: 23S / RANGE: 32E / SECTION: 21 / LAT: 32.2838153 / LONG: -103.6743976 (TVD: 0 feet, MD: 0 feet)

PPP: SESE / 100 FSL / 330 FEL / TWSP: 23S / RANGE: 32E / SECTION: 21 / LAT: 32.2831306 / LONG: -103.6721152 (TVD: 9160 feet, MD: 9219 feet)

BHL: NENE / 20 FNL / 330 FEL / TWSP: 23S / RANGE: 32E / SECTION: 16 / LAT: 32.3118402 / LONG: -103.6721363 (TVD: 9670 feet, MD: 19961 feet)

BLM Point of Contact

Name: Candy Vigil

Title: LIE

Phone: (575) 234-5982

Email: cvigil@blm.gov

CONFIDENTIAL

District I
1625 N. French Dr., Hobbs, NM 88240
Phone: (575) 393-6161 Fax: (575) 393-0720

District II
811 S. First St., Artesia, NM 88210
Phone: (575) 748-1283 Fax: (575) 748-9720

District III
1000 Rio Brazos Road, Aztec, NM 87410
Phone: (505) 334-6178 Fax: (505) 334-6170

District IV
1220 S. St. Francis Dr., Santa Fe, NM 87505
Phone: (505) 476-3460 Fax: (505) 476-3462

State of New Mexico
Energy, Minerals & Natural Resources Department
OIL CONSERVATION DIVISION
1220 South St. Francis Dr.
Santa Fe, NM 87505

Form C-102
Revised August 1,
2011
Submit one copy to appropriate
District Office

☐ AMENDED REPORT

WELL LOCATION AND ACREAGE DEDICATION PLAT

¹ API Number 30-025-50050	² Pool Code [97933]	³ Pool Name WC-025 G-07 S233204D;BONE SPRING
⁴ Property Code 332757	⁵ Property Name FLOOFY CAT 21-16 FED STATE COM	⁶ Well Number 528H
⁷ OGRID No. 6137	⁸ Operator Name DEVON ENERGY PRODUCTION COMPANY, L.P.	⁹ Elevation 3671.6

¹⁰ Surface Location

UL or lot no.	Section	Township	Range	Lot Idn	Feet from the	North/South line	Feet from the	East/West line	County
P	21	23 S	32 E		350	SOUTH	1035	EAST	LEA

¹¹ Bottom Hole Location If Different From Surface

UL or lot no.	Section	Township	Range	Lot Idn	Feet from the	North/South line	Feet from the	East/West line	County
A	16	23 S	32 E		20	NORTH	330	EAST	LEA

¹² Dedicated Acres 80-Sec 16: N/2	¹³ Joint or Infill	¹⁴ Consolidation Code	¹⁵ Order No.
--	-------------------------------	----------------------------------	-------------------------

No allowable will be assigned to this completion until all interests have been consolidated or a non-standard unit has been approved by the division.

<p>NOTE: LATITUDE AND LONGITUDE COORDINATES ARE SHOWN USING THE NORTH AMERICAN DATUM OF 1983 (NAD83). LISTED "NEW MEXICO" STATE PLANE EAST COORDINATES ARE GRID (NAD83). BASIS OF BEARING AND DISTANCES USED ARE NEW MEXICO STATE PLANE EAST COORDINATES MODIFIED TO THE SURFACE, VERTICAL DATUM NAVD83.</p> <p>17 OPERATOR CERTIFICATION I hereby certify that the information contained herein is true and complete to the best of my knowledge and belief, and that this organization either owns a working interest or unleased mineral interest in the land including the proposed bottom hole location or has a right to drill this well at this location pursuant to a contract with an owner of such a mineral or working interest, or to a voluntary pooling agreement or a compulsory pooling order heretofore entered by the division.</p> <p>Signature: <i>Jenny Harms</i> Date: 9-1-2021 Printed Name: JENNY HARMS E-mail Address: JENNY.HARMS@DVN.COM</p> <p>18 SURVEYOR CERTIFICATION I hereby certify that the well location shown on this plat was plotted from field notes of actual surveys made by me or under my supervision, and that the same is true and correct to the best of my belief.</p> <p>JULY 30, 2021 Date of Survey</p> <p>Signature and Seal of Professional Surveyor: <i>William F. Jaramila</i> Certificate Number: FLSMOR0000000000, PLS 12797 SURVEY NO. 8985</p>	<p>17 OPERATOR CERTIFICATION I hereby certify that the information contained herein is true and complete to the best of my knowledge and belief, and that this organization either owns a working interest or unleased mineral interest in the land including the proposed bottom hole location or has a right to drill this well at this location pursuant to a contract with an owner of such a mineral or working interest, or to a voluntary pooling agreement or a compulsory pooling order heretofore entered by the division.</p> <p>Signature: <i>Jenny Harms</i> Date: 9-1-2021 Printed Name: JENNY HARMS E-mail Address: JENNY.HARMS@DVN.COM</p> <p>18 SURVEYOR CERTIFICATION I hereby certify that the well location shown on this plat was plotted from field notes of actual surveys made by me or under my supervision, and that the same is true and correct to the best of my belief.</p> <p>JULY 30, 2021 Date of Survey</p> <p>Signature and Seal of Professional Surveyor: <i>William F. Jaramila</i> Certificate Number: FLSMOR0000000000, PLS 12797 SURVEY NO. 8985</p>
---	--

District I
1625 N. French Dr., Hobbs, NM 88240
Phone: (575) 393-6161 Fax: (575) 393-0720

District II
811 S. First St., Artesia, NM 88210
Phone: (575) 748-1283 Fax: (575) 748-9720

District III
1000 Rio Brazos Road, Aztec, NM 87410
Phone: (505) 334-6178 Fax: (505) 334-6170

District IV
1220 S. St. Francis Dr., Santa Fe, NM 87505
Phone: (505) 476-3460 Fax: (505) 476-3462

State of New Mexico
Energy, Minerals & Natural Resources Department
OIL CONSERVATION DIVISION
1220 South St. Francis Dr.
Santa Fe, NM 87505

Form C-102
Revised August 1,
2011
copy to appropriate
District Office

Submit one copy to appropriate
District Office

☐ AMENDED REPORT

WELL LOCATION AND ACREAGE DEDICATION PLAT

¹ API Number 30-025-50050	² Pool Code [53805]	³ Pool Name SAND DUNES;BONE SPRING, SOUTH
⁴ Property Code 332757	⁵ Property Name FLOOFY CAT 21-16 FED STATE COM	
⁷ OGRID No. 6137	⁸ Operator Name DEVON ENERGY PRODUCTION COMPANY, L.P.	⁶ Well Number 528H
		⁹ Elevation 3671.6

¹⁰ Surface Location

UL or lot no.	Section	Township	Range	Lot Idn	Feet from the	North/South line	Feet from the	East/West line	County
P	21	23 S	32 E		350	SOUTH	1035	EAST	LEA

¹¹ Bottom Hole Location If Different From Surface

UL or lot no.	Section	Township	Range	Lot Idn	Feet from the	North/South line	Feet from the	East/West line	County
A	16	23 S	32 E		20	NORTH	330	EAST	LEA

¹² Dedicated Acres	¹³ Joint or Infill	¹⁴ Consolidation Code	¹⁵ Order No.
240-Sec 21:	All, Sec 16:	\$/2	

No allowable will be assigned to this completion until all interests have been consolidated or a non-standard unit has been approved by the division.

NW CORNER SEC. 16
LAT. = 32.3118416"N
LONG. = 103.6881673"W

NMSP EAST (FT)
N = 477780.18
E = 740653.25

W/4 CORNER SEC. 16
LAT. = 32.3045785"N
LONG. = 103.6881632"W

NMSP EAST (FT)
N = 475137.91
E = 740670.42

NW CORNER SEC. 21
LAT. = 32.2973218"N
LONG. = 103.6881624"W

NMSP EAST (FT)
N = 472497.97
E = 740686.53

W/4 CORNER SEC. 21
LAT. = 32.2900582"N
LONG. = 103.6881558"W

NMSP EAST (FT)
N = 469855.52
E = 740704.48

SW CORNER SEC. 21
LAT. = 32.2828069"N
LONG. = 103.6881552"W

NMSP EAST (FT)
N = 467217.53
E = 740720.53

N89°25'27"E 2643.69 FT N89°25'35"E 2640.18 FT

N/4 CORNER SEC. 16
LAT. = 32.3118706"N
LONG. = 103.6796121"W

NMSP EAST (FT)
N = 477806.75
E = 743296.24

BOTTOM OF HOLE
LAT. = 32.3118402"N
LONG. = 103.6721363"W

NMSP EAST (FT)
N = 477809.88
E = 745605.92

LAST TAKE POINT
100' FNL, 330' FEL
LAT. = 32.3116204"N
LONG. = 103.6721362"W

NMSP EAST (FT)
N = 477729.89
E = 745606.43

NOTE:
LATITUDE AND LONGITUDE COORDINATES
ARE SHOWN USING THE NORTH
AMERICAN DATUM OF 1983 (NAD83)
LISTED "NEW MEXICO" STATE PLANE
EAST COORDINATES ARE GRID (NAD83).
BASIS OF BEARING AND DISTANCES
USED ARE NEW MEXICO STATE PLANE
EAST COORDINATES MODIFIED TO THE
SURFACE. VERTICAL DATUM NAVD83.

N89°24'55"E 2642.34 FT N89°27'25"E 2641.46 FT

N/4 CORNER SEC. 21
LAT. = 32.2973519"N
LONG. = 103.6796130"W

NMSP EAST (FT)
N = 472524.93
E = 743328.17

FIRST TAKE POINT
100' FSL, 330' FEL
LAT. = 32.2831306"N
LONG. = 103.6721152"W

NMSP EAST (FT)
N = 467365.48
E = 745676.84

FLOOPY CAT 21-16 FED STATE COM 528H
ELEV. = 3671.6'
LAT. = 32.2838153"N (NAD83)
LONG. = 103.6743976"W

NMSP EAST (FT)
N = 467610.24
E = 744969.96

S/4 CORNER SEC. 21
LAT. = 32.2828480"N
LONG. = 103.6796166"W

NMSP EAST (FT)
N = 467248.45
E = 743359.23

NE CORNER SEC. 16
LAT. = 32.3118987"N
LONG. = 103.6710683"W

NMSP EAST (FT)
N = 477833.18
E = 745935.72

E/4 CORNER SEC. 16
LAT. = 32.3046362"N
LONG. = 103.6710674"W

NMSP EAST (FT)
N = 475191.11
E = 745952.33

NE CORNER SEC. 21
LAT. = 32.2973762"N
LONG. = 103.6710664"W

NMSP EAST (FT)
N = 472549.96
E = 745968.95

E/4 CORNER SEC. 21
LAT. = 32.2901167"N
LONG. = 103.6710640"W

NMSP EAST (FT)
N = 469908.98
E = 745986.01

SE CORNER SEC. 21
LAT. = 32.2828569"N
LONG. = 103.6710470"W

NMSP EAST (FT)
N = 467267.93
E = 746007.58

S89°19'43"W 2639.44 FT S89°34'43"W 2648.99 FT

Intent ☒ As Drilled ☐API #
30-025-50050

Operator Name:	Property Name:	Well Number
DEVON ENERGY PRODUCTION CO., L.P.	FLOOFY CAT 21-16 FED STATE COM	528H

Kick Off Point (KOP)

UL	Section 21	Township 23S	Range 32E	Lot	Feet 49 FEL	From N/S	Feet 401 FEL	From E/W	County LEA
Latitude 32.28290710					Longitude -103.67241755			NAD 83	

First Take Point (FTP)

UL P	Section 21	Township 23S	Range 32E	Lot	Feet 100	From N/S SOUTH	Feet 330	From E/W EAST	County LEA
Latitude 32.2831306					Longitude 103.6721152			NAD 83	

Last Take Point (LTP)

UL A	Section 16	Township 23S	Range 32E	Lot	Feet 100	From N/S NORTH	Feet 330	From E/W EAST	County LEA
Latitude 32.3116204					Longitude 103.6721362			NAD 83	

Is this well the defining well for the Horizontal Spacing Unit?

☐ NO

Is this well an infill well?

☐ YES

If infill is yes please provide API if available, Operator Name and well number for Defining well for Horizontal Spacing Unit.

API #		
Operator Name:	Property Name:	Well Number

KZ 06/29/2018

State of New Mexico
Energy, Minerals and Natural Resources Department

Submit Electronically
Via E-permitting

Oil Conservation Division
1220 South St. Francis Dr.
Santa Fe, NM 87505

NATURAL GAS MANAGEMENT PLAN

This Natural Gas Management Plan must be submitted with each Application for Permit to Drill (APD) for a new or recompleted well.

Section 1 – Plan Description Effective May 25, 2021

I. Operator: DEVON ENERGY PRODUCTION COMPANY, LP **OGRID:** 6137 **Date:** 8 / 26 / 2021

II. Type: ☒ Original ☐ Amendment due to ☐ 19.15.27.9.D(6)(a) NMAC ☐ 19.15.27.9.D(6)(b) NMAC ☐ Other.

If Other, please describe: _____

III. Well(s): Provide the following information for each new or recompleted well or set of wells proposed to be drilled or proposed to be recompleted from a single well pad or connected to a central delivery point.

Well Name	API	ULSTR	Footages	Anticipated Oil BBL/D	Anticipated Gas MCF/D	Anticipated Produced Water BBL/D
See attachment.						

IV. Central Delivery Point Name: See attachment [See 19.15.27.9(D)(1) NMAC]

V. Anticipated Schedule: Provide the following information for each new or recompleted well or set of wells proposed to be drilled or proposed to be recompleted from a single well pad or connected to a central delivery point.

Well Name	API	Spud Date	TD Reached Date	Completion Commencement Date	Initial Flow Back Date	First Production Date
See attachment						

VI. Separation Equipment: ☒ Attach a complete description of how Operator will size separation equipment to optimize gas capture.

VII. Operational Practices: ☒ Attach a complete description of the actions Operator will take to comply with the requirements of Subsection A through F of 19.15.27.8 NMAC.

VIII. Best Management Practices: ☒ Attach a complete description of Operator's best management practices to minimize venting during active and planned maintenance.

NATURAL GAS MANAGEMENT PLAN
Section 1 - Plan Description

III. Well(s): Provide the following information for each new or recompleted well or set of wells proposed to be drilled or proposed to be recompleted from a single well pad or connected to a central delivery point.

Well Name	Central Delivery Point Name:	API	ULSTR	FOOTAGES					Anticipated Oil BBL/D	Anticipated Gas MCF/D	Anticipated Produced Water BBL/D
FLOOPY CAT 21-16 FED STATE COM 521H	Floopy Cat 21 CTB 1		21-235-32E	500	FSL	790	FWL	Upper Bone Spring	(+/-) 3270mcf/d/(+/-)1344bopd/(+/-)12353bwpd		
FLOOPY CAT 21-16 FED STATE COM 121H	Floopy Cat 21 CTB 1		21-235-32E	500	FSL	820	FWL	Lower Bone Spring	(+/-) 3270mcf/d/(+/-)1344bopd/(+/-)12353bwpd		
FLOOPY CAT 21-16 FED STATE COM 522H	Floopy Cat 21 CTB 1		21-235-32E	500	FSL	850	FWL	Upper Bone Spring	(+/-) 3270mcf/d/(+/-)1344bopd/(+/-)12353bwpd		
FLOOPY CAT 21-16 FED STATE COM 711H	Floopy Cat 21 CTB 1		21-235-32E	350	FSL	790	FWL	Upper Wolfcamp	(+/-) 5413mcf/d/(+/-)1981bopd/(+/-)15339bwpd		
FLOOPY CAT 21-16 FED STATE COM 611H	Floopy Cat 21 CTB 1		21-235-32E	350	FSL	820	FWL	Upper Wolfcamp	(+/-) 5413mcf/d/(+/-)1981bopd/(+/-)15339bwpd		
FLOOPY CAT 21-16 FED STATE COM 731H	Floopy Cat 21 CTB 1		21-235-32E	350	FSL	850	FWL	Upper Wolfcamp	(+/-) 5413mcf/d/(+/-)1981bopd/(+/-)15339bwpd		
FLOOPY CAT 21-16 FED STATE COM 523H	Floopy Cat 21 CTB 1		21-235-32E	500	FSL	2280	FWL	Upper Bone Spring	(+/-)3270mcf/d/(+/-)1344bopd/(+/-)12353bwpd		
FLOOPY CAT 21-16 FED STATE COM 122H	Floopy Cat 21 CTB 1		21-235-32E	500	FSL	2310	FWL	Lower Bone Spring	(+/-)12158mcf/d/(+/-)1338bopd/(+/-)12287bwpd		
FLOOPY CAT 21-16 FED STATE COM 524H	Floopy Cat 21 CTB 1		21-235-32E	500	FSL	2340	FWL	Upper Bone Spring	(+/-) 3270mcf/d/(+/-)1344bopd/(+/-)12353bwpd		
FLOOPY CAT 21-16 FED STATE COM 525H	Floopy Cat 21 CTB 1		21-235-32E	350	FSL	2625	FWL	Upper Bone Spring	(+/-) 3270mcf/d/(+/-)1344bopd/(+/-)12353bwpd		
FLOOPY CAT 21-16 FED STATE COM 123H	Floopy Cat 21 CTB 1		21-235-32E	350	FSL	2633	FEL	Lower Bone Spring	(+/-)12158mcf/d/(+/-)1338bopd/(+/-)12287bwpd		
FLOOPY CAT 21-16 FED STATE COM 526H	Floopy Cat 21 CTB 1		21-235-32E	350	FSL	2603	FEL	Upper Bone Spring	(+/-)12158mcf/d/(+/-)1338bopd/(+/-)12287bwpd		
FLOOPY CAT 21-16 FED STATE COM 712H	Floopy Cat 21 CTB 1		21-235-32E	350	FSL	2280	FWL	Upper Wolfcamp	(+/-) 5413mcf/d/(+/-)1981bopd/(+/-)15339bwpd		
FLOOPY CAT 21-16 FED STATE COM 612H	Floopy Cat 21 CTB 1		21-235-32E	350	FSL	2310	FWL	Upper Wolfcamp	(+/-) 5413mcf/d/(+/-)1981bopd/(+/-)15339bwpd		
FLOOPY CAT 21-16 FED STATE COM 732H	Floopy Cat 21 CTB 1		21-235-32E	350	FSL	2340	FWL	Upper Wolfcamp	(+/-) 5413mcf/d/(+/-)1981bopd/(+/-)15339bwpd		
FLOOPY CAT 21-16 FED STATE COM 713H	Floopy Cat 21 CTB 1		21-235-32E	200	FSL	2625	FWL	Upper Wolfcamp	(+/-) 5413mcf/d/(+/-)1981bopd/(+/-)15339bwpd		
FLOOPY CAT 21-16 FED STATE COM 613H	Floopy Cat 21 CTB 1		21-235-32E	200	FSL	2633	FEL	Upper Wolfcamp	(+/-) 5413mcf/d/(+/-)1981bopd/(+/-)15339bwpd		
FLOOPY CAT 21-16 FED STATE COM 733H	Floopy Cat 21 CTB 1		21-235-32E	200	FSL	2603	FEL	Upper Wolfcamp	(+/-) 5413mcf/d/(+/-)1981bopd/(+/-)15339bwpd		
FLOOPY CAT 21-16 FED STATE COM 527H	Floopy Cat 21 CTB 2		21-235-32E	350	FSL	1095	FEL	Upper Bone Spring	(+/-)3270mcf/d/(+/-)1344bopd/(+/-)12353bwpd		
FLOOPY CAT 21-16 FED STATE COM 124H	Floopy Cat 21 CTB 2		21-235-32E	350	FSL	1065	FEL	Lower Bone Spring	(+/-)12158mcf/d/(+/-)1338bopd/(+/-)12287bwpd		
FLOOPY CAT 21-16 FED STATE COM 528H	Floopy Cat 21 CTB 2	30-025-50050	21-235-32E	350	FSL	1035	FEL	Upper Bone Spring	(+/-)3270mcf/d/(+/-)1344bopd/(+/-)12353bwpd		
FLOOPY CAT 21-16 FED STATE COM 714H	Floopy Cat 21 CTB 2		21-235-32E	200	FSL	1065	FEL	Upper Wolfcamp	(+/-) 5413mcf/d/(+/-)1981bopd/(+/-)15339bwpd		
FLOOPY CAT 21-16 FED STATE COM 614H	Floopy Cat 21 CTB 2		21-235-32E	200	FSL	1035	FEL	Upper Wolfcamp	(+/-) 5413mcf/d/(+/-)1981bopd/(+/-)15339bwpd		
FLOOPY CAT 21-16 FED STATE COM 734H	Floopy Cat 21 CTB 2		21-235-32E	200	FSL	1005	FEL	Upper Wolfcamp	(+/-) 5413mcf/d/(+/-)1981bopd/(+/-)15339bwpd		
			21-235-32E	200	FSL	1005	FEL	Upper Wolfcamp	(+/-) 5413mcf/d/(+/-)1981bopd/(+/-)15339bwpd		

V. Anticipated Schedule: Provide the following information for each new or recompleted well or set of wells proposed to be drilled or proposed to be recompleted from a single well pad or connected to a central delivery point.

Well Name	API	Spud Date	TD Reached Date	Completion Commencement Date	Initial Flow back Date	First Production Date
FLOOPY CAT 21-16 FED STATE COM 521H		8/26/2022	9/25/2022	1/23/2023	1/23/2023	1/23/2023
FLOOPY CAT 21-16 FED STATE COM 121H		8/26/2022	9/25/2022	1/23/2023	1/23/2023	1/23/2023
FLOOPY CAT 21-16 FED STATE COM 522H		8/26/2022	9/25/2022	1/23/2023	1/23/2023	1/23/2023
FLOOPY CAT 21-16 FED STATE COM 711H		12/26/2021	1/25/2022	5/25/2022	5/25/2022	5/25/2022
FLOOPY CAT 21-16 FED STATE COM 611H		12/26/2021	1/25/2022	5/25/2022	5/25/2022	5/25/2022
FLOOPY CAT 21-16 FED STATE COM 731H		12/26/2021	1/25/2022	5/25/2022	5/25/2022	5/25/2022
FLOOPY CAT 21-16 FED STATE COM 523H		8/26/2022	9/25/2022	1/23/2023	1/23/2023	1/23/2023
FLOOPY CAT 21-16 FED STATE COM 122H		8/26/2022	9/25/2022	1/23/2023	1/23/2023	1/23/2023
FLOOPY CAT 21-16 FED STATE COM 524H		8/26/2022	9/25/2022	1/23/2023	1/23/2023	1/23/2023
FLOOPY CAT 21-16 FED STATE COM 525H		8/26/2022	9/25/2022	1/23/2023	1/23/2023	1/23/2023
FLOOPY CAT 21-16 FED STATE COM 123H		8/26/2022	9/25/2022	1/23/2023	1/23/2023	1/23/2023
FLOOPY CAT 21-16 FED STATE COM 526H		8/26/2022	9/25/2022	1/23/2023	1/23/2023	1/23/2023
FLOOPY CAT 21-16 FED STATE COM 712H		12/26/2021	1/25/2022	5/25/2022	5/25/2022	5/25/2022
FLOOPY CAT 21-16 FED STATE COM 612H		12/26/2021	1/25/2022	5/25/2022	5/25/2022	5/25/2022
FLOOPY CAT 21-16 FED STATE COM 732H		12/26/2021	1/25/2022	5/25/2022	5/25/2022	5/25/2022
FLOOPY CAT 21-16 FED STATE COM 713H		12/26/2021	1/25/2022	5/25/2022	5/25/2022	5/25/2022
FLOOPY CAT 21-16 FED STATE COM 613H		12/26/2021	1/25/2022	5/25/2022	5/25/2022	5/25/2022
FLOOPY CAT 21-16 FED STATE COM 733H		12/26/2021	1/25/2022	5/25/2022	5/25/2022	5/25/2022
FLOOPY CAT 21-16 FED STATE COM 527H		8/26/2022	9/25/2022	1/23/2023	1/23/2023	1/23/2023
FLOOPY CAT 21-16 FED STATE COM 124H		8/26/2022	9/25/2022	1/23/2023	1/23/2023	1/23/2023
FLOOPY CAT 21-16 FED STATE COM 528H		8/26/2022	9/25/2022	1/23/2023	1/23/2023	1/23/2023
FLOOPY CAT 21-16 FED STATE COM 714H		12/26/2021	1/25/2022	5/25/2022	5/25/2022	5/25/2022
FLOOPY CAT 21-16 FED STATE COM 614H		12/26/2021	1/25/2022	5/25/2022	5/25/2022	5/25/2022
FLOOPY CAT 21-16 FED STATE COM 734H		12/26/2021	1/25/2022	5/25/2022	5/25/2022	5/25/2022

*Dates above are subject to change

Section 2 – Enhanced Plan
EFFECTIVE APRIL 1, 2022

Beginning April 1, 2022, an operator that is not in compliance with its statewide natural gas capture requirement for the applicable reporting area must complete this section.

☒ Operator certifies that it is not required to complete this section because Operator is in compliance with its statewide natural gas capture requirement for the applicable reporting area.

IX. Anticipated Natural Gas Production:

Well	API	Anticipated Average Natural Gas Rate MCF/D	Anticipated Volume of Natural Gas for the First Year MCF

X. Natural Gas Gathering System (NGGS):

Operator	System	ULSTR of Tie-in	Anticipated Gathering Start Date	Available Maximum Daily Capacity of System Segment Tie-in

XI. Map. ☐ Attach an accurate and legible map depicting the location of the well(s), the anticipated pipeline route(s) connecting the production operations to the existing or planned interconnect of the natural gas gathering system(s), and the maximum daily capacity of the segment or portion of the natural gas gathering system(s) to which the well(s) will be connected.

XII. Line Capacity. The natural gas gathering system ☐ will ☐ will not have capacity to gather 100% of the anticipated natural gas production volume from the well prior to the date of first production.

XIII. Line Pressure. Operator ☐ does ☐ does not anticipate that its existing well(s) connected to the same segment, or portion, of the natural gas gathering system(s) described above will continue to meet anticipated increases in line pressure caused by the new well(s).

☐ Attach Operator's plan to manage production in response to the increased line pressure.

XIV. Confidentiality: ☐ Operator asserts confidentiality pursuant to Section 71-2-8 NMSA 1978 for the information provided in Section 2 as provided in Paragraph (2) of Subsection D of 19.15.27.9 NMAC, and attaches a full description of the specific information for which confidentiality is asserted and the basis for such assertion.

Section 3 - Certifications

Effective May 25, 2021

Operator certifies that, after reasonable inquiry and based on the available information at the time of submittal:

☒ Operator will be able to connect the well(s) to a natural gas gathering system in the general area with sufficient capacity to transport one hundred percent of the anticipated volume of natural gas produced from the well(s) commencing on the date of first production, taking into account the current and anticipated volumes of produced natural gas from other wells connected to the pipeline gathering system; or

☐ Operator will not be able to connect to a natural gas gathering system in the general area with sufficient capacity to transport one hundred percent of the anticipated volume of natural gas produced from the well(s) commencing on the date of first production, taking into account the current and anticipated volumes of produced natural gas from other wells connected to the pipeline gathering system.

If Operator checks this box, Operator will select one of the following:

Well Shut-In. ☐ Operator will shut-in and not produce the well until it submits the certification required by Paragraph (4) of Subsection D of 19.15.27.9 NMAC; or

Venting and Flaring Plan. ☐ Operator has attached a venting and flaring plan that evaluates and selects one or more of the potential alternative beneficial uses for the natural gas until a natural gas gathering system is available, including:

- (a) power generation on lease;
- (b) power generation for grid;
- (c) compression on lease;
- (d) liquids removal on lease;
- (e) reinjection for underground storage;
- (f) reinjection for temporary storage;
- (g) reinjection for enhanced oil recovery;
- (h) fuel cell production; and
- (i) other alternative beneficial uses approved by the division.

Section 4 - Notices

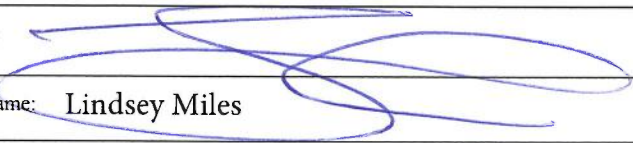
1. If, at any time after Operator submits this Natural Gas Management Plan and before the well is spud:

(a) Operator becomes aware that the natural gas gathering system it planned to connect the well(s) to has become unavailable or will not have capacity to transport one hundred percent of the production from the well(s), no later than 20 days after becoming aware of such information, Operator shall submit for OCD's approval a new or revised venting and flaring plan containing the information specified in Paragraph (5) of Subsection D of 19.15.27.9 NMAC; or

(b) Operator becomes aware that it has, cumulatively for the year, become out of compliance with its baseline natural gas capture rate or natural gas capture requirement, no later than 20 days after becoming aware of such information, Operator shall submit for OCD's approval a new or revised Natural Gas Management Plan for each well it plans to spud during the next 90 days containing the information specified in Paragraph (2) of Subsection D of 19.15.27.9 NMAC, and shall file an update for each Natural Gas Management Plan until Operator is back in compliance with its baseline natural gas capture rate or natural gas capture requirement.

2. OCD may deny or conditionally approve an APD if Operator does not make a certification, fails to submit an adequate venting and flaring plan which includes alternative beneficial uses for the anticipated volume of natural gas produced, or if OCD determines that Operator will not have adequate natural gas takeaway capacity at the time a well will be spud.

I certify that, after reasonable inquiry, the statements in and attached to this Natural Gas Management Plan are true and correct to the best of my knowledge and acknowledge that a false statement may be subject to civil and criminal penalties under the Oil and Gas Act.

Signature: 
Printed Name: Lindsey Miles
Title: Land Manager
E-mail Address:
Date:
Phone:
OIL CONSERVATION DIVISION (Only applicable when submitted as a standalone form)
Approved By:
Title:
Approval Date:
Conditions of Approval:



VI. Separation Equipment

Devon Energy Production Company, L.P. utilizes a "stage separation" process in which oil and gas separation is carried out through a series of separators operating at successively reduced pressures. Hydrocarbon liquids are produced into a high-pressure inlet separator, then carried through one or more lower pressure separation vessels before entering the storage tanks. The purpose of this separation process is to attain maximum recovery of liquid hydrocarbons from the fluids and allow maximum capture of produced gas into the sales pipeline. Devon utilizes a series of Low-Pressure Compression units to capture gas off the staged separation and send it to the sales pipeline. This process minimizes the amount of flash gas that enters the end-stage storage tanks that is subsequently vented or flared.



VII. Operational Practices

Devon Energy Production Company, L. P. will employ best management practices and control technologies to maximize the recovery and minimize waste of natural gas through venting and flaring.

- During drilling operations, Devon will utilize flares and/or combustors to capture and control natural gas, where technically feasible. If flaring is deemed technically in-feasible, Devon will employ best management practices to minimize or reduce venting to the extent possible.
- During completions operations, Devon will utilize Green Completion methods to capture gas produced during well completions that is otherwise vented or flared. If capture is technically in-feasible, flares and/or combustors will be used to capture and control flow back fluids entering into frac tanks during initial flowback. Upon indication of first measurable hydrocarbon volumes, Devon will turn operations to onsite separation vessels and flow to the gathering pipeline.
- During production operations, Devon will take every practical effort to minimize waste of natural gas through venting and flaring by:
 - Designing and constructing facilities in a manner consistent to achieve maximum capture and control of hydrocarbon liquids & produced gas
 - Utilizing a closed-loop capture system to collect and route produced gas to sales line via low pressure compression, or to a flare/combustor
 - Flaring in lieu of venting, where technically feasible
 - Utilizing auto-ignitors or continuous pilots, with thermocouples connected to Scada, to quickly detect and resolve issues related to malfunctioning flares/combustors
 - Employ the use of automatic tank gauging to minimize storage tank venting during loading events
 - Installing air-driven or electric-driven pneumatics & combustion engines, where technically feasible to minimize venting to the atmosphere
 - Confirm equipment is properly maintained and repaired through a preventative maintenance and repair program to ensure equipment meets all manufacturer specifications
 - Conduct and document AVO inspections on the frequency set forth in Part 27 to detect and repair any onsite leaks as quickly and efficiently as is feasible



VIII. Best Management Practices during Maintenance

Devon Energy Production Company, L.P. will utilize best management practices to minimize venting during active and planned maintenance activities. Devon is operating under guidance that production facilities permitted under NOI permits have no provisions to allow high pressure flaring and high pressure flaring is only allowed in disruption scenarios so long as the duration is less than eight hours. When technically feasible, flaring during maintenance activities will be utilized in lieu of venting to the atmosphere. Devon will work with third-party operators during scheduled maintenance of downstream pipeline or processing plants to address those events ahead of time to minimize venting. Actions considered include identifying alternative capture approaches or planning to temporarily reduce production or shut in the well to address these circumstances.

FLOOFY CAT 21-16 FED STATE COM 528H

1. Geologic Formations

TVD of target	9670	Pilot hole depth	N/A
MD at TD:	19961	Deepest expected fresh water	

Basin

Formation	Depth (TVD) from KB	Water/Mineral Bearing/Target Zone?	Hazards*
Rustler	1160		
Salt	2600		
Base of Salt	4805		
Delaware	4840		
Cherry Canyon	5970		
Brushy Canyon	6910		
1st Bone Spring Lime	8640		
Avalon b	9160		

*H2S, water flows, loss of circulation, abnormal pressures, etc.

FLOOFY CAT 21-16 FED STATE COM 528H

2. Casing Program

Hole Size	Csg. Size	Wt (PPF)	Grade	Conn	Casing Interval		Casing Interval	
					From (MD)	To (MD)	From (TVD)	To (TVD)
17 1/2	13 3/8	48	H40	BTC	0	1185	0	1185
12 1/4	9 5/8	40	J-55	BTC	0	4905	0	4905
8 3/4	5 1/2	17	P110	BTC	0	19961	0	9670

- All casing strings will be tested in accordance with Onshore Oil and Gas Order #2 IILB.1.h Must have table for contingency casing.

FLOOFY CAT 21-16 FED STATE COM 528H

3. Cementing Program (3-String Primary Design)

Casing	# Sks	TOC	Wt. (lb/gal)	Yld (ft ³ /sack)	Slurry Description
Surface	896	Surf	13.2	1.4	Lead: Class C Cement + additives
Int 1	537	Surf	9.0	3.3	Lead: Class C Cement + additives
	154	500' above shoe	13.2	1.4	Tail: Class H / C + additives
Int 1 Intermediate Squeeze	As Needed	Surf	9.0	3.3	Squeeze Lead: Class C Cement + additives
	537	Surf	9.0	3.3	Lead: Class C Cement + additives
	154	500' above shoe	13.2	1.4	Tail: Class H / C + additives
Production	403	500' tieback	9.0	3.3	Lead: Class H / C + additives
	2089	KOP	13.2	1.4	Tail: Class H / C + additives

If a DV tool is ran the depth(s) will be adjusted based on hole conditions and cement volumes will be adjusted proportionally. Slurry weights will be adjusted based on estimated fracture gradient of the formation. DV tool will be set a minimum of 50 feet below previous casing and a minimum of 200 feet above current shoe. If cement is not returned to surface during the primary cement job on the surface casing string, a planned top job will be conducted immediately after completion of the primary job.

Casing String	% Excess
Surface	50%
Intermediate	30%
Production	10%

FLOOFY CAT 21-16 FED STATE COM 528H

4. Pressure Control Equipment (Three String Design)

BOP installed and tested before drilling which hole?	Size?	Min. Required WP	Type	✓	Tested to:
Int 1	13-58"	5M	Annular	X	50% of rated working pressure
			Blind Ram	X	5M
			Pipe Ram		
			Double Ram	X	
			Other*		
Production	13-5/8"	5M	Annular	X	50% of rated working pressure
			Blind Ram	X	5M
			Pipe Ram		
			Double Ram	X	
			Other*		
			Annular (5M)		
			Blind Ram		
			Pipe Ram		
			Double Ram		
			Other*		

FLOOFY CAT 21-16 FED STATE COM 528H

5. Mud Program (Three String Design)

Section	Type	Weight (ppg)
Surface	FW Gel	8.5-9
Intermediate	Brine	10-10.5
Production	WBM	8.5-9

Sufficient mud materials to maintain mud properties and meet minimum lost circulation and weight increase requirements will be kept on location at all times.

What will be used to monitor the loss or gain of fluid?	PVT/Pason/Visual Monitoring
---	-----------------------------

6. Logging and Testing Procedures

Logging, Coring and Testing	
X	Will run GR/CNL from TD to surface (horizontal well - vertical portion of hole). Stated logs run will be in the Completion Report and submitted to the BLM.
	No logs are planned based on well control or offset log information.
	Drill stem test? If yes, explain.
	Coring? If yes, explain.

Additional logs planned		Interval
	Resistivity	
	Density	
X	CBL	Production casing
X	Mud log	KOP to TD
	PEX	

7. Drilling Conditions

Condition	Specify what type and where?
BH pressure at deepest TVD	4525
Abnormal temperature	No

Mitigation measure for abnormal conditions. Describe. Lost circulation material/sweeps/mud scavengers.

Hydrogen Sulfide (H₂S) monitors will be installed prior to drilling out the surface shoe. If H₂S is detected in concentrations greater than 100 ppm, the operator will comply with the provisions of Onshore Oil and Gas Order #6. If Hydrogen Sulfide is encountered measured values and formations will be provided to the BLM.

N	H ₂ S is present
Y	H ₂ S plan attached.

FLOOFY CAT 21-16 FED STATE COM 528H

8. Other facets of operation

Is this a walking operation? Potentially

- 1 If operator elects, drilling rig will batch drill the surface holes and run/cement surface casing; walking the rig to next wells on the pad.
- 2 The drilling rig will then batch drill the intermediate sections and run/cement intermediate casing; the wellbore will be isolated with a blind flange and pressure gauge installed for monitoring the well before walking to the next well.
- 3 The drilling rig will then batch drill the production hole sections on the wells with OBM, run/cement production casing, and install TA caps or tubing heads for completions.

NOTE: During batch operations the drilling rig will be moved from well to well however, it will not be removed from the pad until all wells have production casing run/cemented.

Will be pre-setting casing? Potentially

- 1 Spudder rig will move in and batch drill surface hole.
 - a. Rig will utilize fresh water based mud to drill surface hole to TD. Solids control will be handled entirely on a closed loop basis.
- 2 After drilling the surface hole section, the spudder rig will run casing and cement following all of the applicable rules and regulations (OnShore Order 2, all COAs and NMOCD regulations).
- 3 The wellhead will be installed and tested once the surface casing is cut off and the WOC time has been reached.
- 4 A blind flange with the same pressure rating as the wellhead will be installed to seal the wellbore. Pressure will be monitored with a pressure gauge installed on the wellhead.
- 5 Spudder rig operations is expected to take 4-5 days per well on a multi-well pad.
- 6 The NMOCD will be contacted and notified 24 hours prior to commencing spudder rig operations.
- 7 Drilling operations will be performed with drilling rig. At that time an approved BOP stack will be nipped up and tested on the wellhead before drilling operations commences on each well.
 - a. The NMOCD will be contacted / notified 24 hours before the drilling rig moves back on to the pad with the pre-set surface casing.

Attachments

X Directional Plan
 Other, describe



U.S. Department of the Interior
BUREAU OF LAND MANAGEMENT

Drilling Plan Data Report

04/13/2022

APD ID: 10400080060

Submission Date: 09/09/2021

Highlighted data
reflects the most
recent changes

Operator Name: DEVON ENERGY PRODUCTION COMPANY LP

Well Name: FLOOFY CAT 21-16 FED STATE COM

Well Number: 528H

[Show Final Text](#)

Well Type: OIL WELL

Well Work Type: Drill

Section 1 - Geologic Formations

Formation ID	Formation Name	Elevation	True Vertical Depth	Measured Depth	Lithologies	Mineral Resources	Producing Formation
6938392	UNKNOWN	3682	0	0	ALLUVIUM, OTHER : Surface	NONE	N
6938393	RUSTLER	2522	1160	1160	SANDSTONE	NONE	N
6938397	TOP OF SALT	1082	2600	2600	SALT	NONE	N
6938395	BASE OF SALT	-1123	4805	4805	SALT	NONE	N
6938401	LAMAR LS	-1138	4820	4820	SANDSTONE	NATURAL GAS, OIL	N
6938402	BELL CANYON	-1158	4840	4840	SANDSTONE	NATURAL GAS, OIL	N
6938403	CHERRY CANYON	-2288	5970	5970	SANDSTONE	NATURAL GAS, OIL	N
6938404	BONE SPRING LIME	-4958	8640	8640	LIMESTONE	NATURAL GAS, OIL	N
6938394	AVALON	-5478	9160	9160	SANDSTONE	NATURAL GAS, OIL	Y
6938391	BONE SPRING 1ST	-6148	9830	9830	SANDSTONE	NATURAL GAS, OIL	N
6938405	BONE SPRING LIME	-6418	10100	10100	LIMESTONE	NATURAL GAS, OIL	N
6938407	BONE SPRING 2ND	-6863	10545	10545	SANDSTONE	NATURAL GAS, OIL	N
6938408	BONE SPRING LIME	-7273	10955	10955	LIMESTONE	NATURAL GAS, OIL	N
6938409	BONE SPRING 3RD	-8028	11710	11710	SANDSTONE	NATURAL GAS, OIL	N
6938410	WOLFCAMP	-8418	12100	12100	SANDSTONE	NATURAL GAS, OIL	N
6938411	STRAWN	-10248	13930	13930	SANDSTONE	NATURAL GAS, OIL	N

Section 2 - Blowout Prevention



Commitment Runs Deep



Design Plan
Operation and Maintenance Plan
Closure Plan

SENM - Closed Loop Systems
June 2010

I. Design Plan

Devon uses MI SWACO closed loop system (CLS). The MI SWACO CLS is designed to maintain drill solids at or below 5%. The equipment is arranged to progressively remove solids from the largest to the smallest size. Drilling fluids can thus be reused and savings is realized on mud and disposal costs. Dewatering may be required with the centrifuges to insure removal of ultra fine solids.

The drilling location is constructed to allow storm water to flow to a central sump normally the cellar. This insures no contamination leaves the drilling pad in the event of a spill. Storm water is reused in the mud system or stored in a reserve fluid tank farm until it can be reused. All lubricants, oils, or chemicals are removed immediately from the ground to prevent the contamination of storm water. An oil trap is normally installed on the sump if an oil spill occurs during a storm.

A tank farm is utilized to store drilling fluids including fresh water and brine fluids. The tank farm is constructed on a 20 ml plastic lined, bermed pad to prevent the contamination of the drilling site during a spill. Fluids from other sites may be stored in these tanks for processing by the solids control equipment and reused in the mud system. At the end of the well the fluids are transported from the tank farm to an adjoining well or to the next well for the rig.

Prior to installing a closed-loop system on site, the topsoil, if present, will be stripped and stockpiled for use as the final cover or fill at the time of closure.

Signs will be posted on the fence surrounding the closed-loop system unless the closed-loop system is located on a site where there is an existing well, that is operated by Devon.

II. Operations and Maintenance Plan

Primary Shakers: The primary shakers make the first removal of drill solids from the drilling mud as it leaves the well bore. The shakers are sized to handle maximum drilling rate at optimal screen size. The shakers normally remove solids down to 74 microns.

Mud Cleaner: The Mud Cleaner cleans the fluid after it leaves the shakers. A set of hydrocyclones are sized to handle 1.25 to 1.5 times the maximum circulating rate. This ensures all the fluid is being processed to an average cut point of 25 microns. The wet discharged is dewatered on a shaker equipped with ultra fine mesh screens and generally cut at 40 microns.



Closed Loop Schematic



Centrifuges: The centrifuges can be one or two in number depending on the well geometry or depth of well. The centrifuges are sized to maintain low gravity solids at 5% or below. They may or may not need a dewatering system to enhance the removal rates. The centrifuges can make a cut point of 8-10 microns depending on bowl speed, feed rate, solids loading and other factors.

The centrifuge system is designed to work on the active system and be flexible to process incoming fluids from other locations. This set-up is also dependant on well factors.

Dewatering System: The dewatering system is a chemical mixing and dosing system designed to enhance the solids removal of the centrifuge. Not commonly used in shallow wells. It may contain pH adjustment, coagulant mixing and dosing, and polymer mixing and dosing. Chemical flocculation binds ultra fine solids into a mass that is within the centrifuge operating design. The

dewatering system improves the centrifuge cut point to infinity or allows for the return of clear water or brine fluid. This ability allows for the ultimate control of low gravity solids.

Cuttings Boxes: Cuttings boxes are utilized to capture drill solids that are discarded from the solids control equipment. These boxes are set upon a rail system that allows for the removal and replacement of a full box of cuttings with an empty one. They are equipped with a cover that insures no product is spilled into the environment during the transportation phase.

Process Tank: (Optional) The process tank allows for the holding and process of fluids that are being transferred into the mud system. Additionally, during times of lost circulation the process tank may hold active fluids that are removed for additional treatment. It can further be used as a mixing tank during well control conditions.

Sump and Sump Pump: The sump is used to collect storm water and the pump is used to transfer this fluid to the active system or to the tank for to hold in reserve. It can also be used to collect fluids that may escape during spills. The location contains drainage ditches that allow the location fluids to drain to the sump.

Reserve Fluids (Tank Farm): A series of frac tanks are used to replace the reserve pit. These are steel tanks that are equipped with a manifold system and a transfer pump. These tanks can contain any number of fluids used during the drilling process. These can include fresh water, cut brine, and saturated salt fluid. The fluid can be from the active well or reclaimed fluid from other locations. A 20 ml liner and berm system is employed to ensure the fluids do not migrate to the environment during a spill.

If a leak develops, the appropriate division district office will be notified within 48 hours of the discovery and the leak will be addressed. Spill prevention is accomplished by maintaining pump packing, hoses, and pipe fittings to insure no leaks are occurring. During an upset condition the source of the spill is isolated and repaired as soon as it is discovered. Free liquid is removed by a diaphragm pump and returned to the mud system. Loose topsoil may be used to stabilize the spill and the contaminated soil is excavated and placed in the cuttings boxes. After the well is finished and the rig has moved, the entire location is scrapped and testing will be performed to determine if a release has occurred.

All trash is kept in a wire mesh enclosure and removed to an approved landfill when full. All spent motor oils are kept in separate containers and they are removed and sent to an approved recycling center. Any spilled lubricants, pipe

dope, or regulated chemicals are removed from soil and sent to landfills approved for these products.

These operations are monitored by Mi Swaco service technicians. Daily logs are maintained to ensure optimal equipment operation and maintenance. Screen and chemical use is logged to maintain inventory control. Fluid properties are monitored and recorded and drilling mud volumes are accounted for in the mud storage farm. This data is kept for end of well review to insure performance goals are met. Lessons learned are logged and used to help with continuous improvement.

A MI SWACO field supervisor manages from 3-5 wells. They are responsible for training personnel, supervising installations, and inspecting sites for compliance of MI SWACO safety and operational policy.

III. Closure Plan

A maximum 340' X 340' caliche pad is built per well. All of the trucks and steel tanks fit on this pad. All fluid cuttings go to the steel tanks to be hauled by various trucking companies to an agency approved disposal.

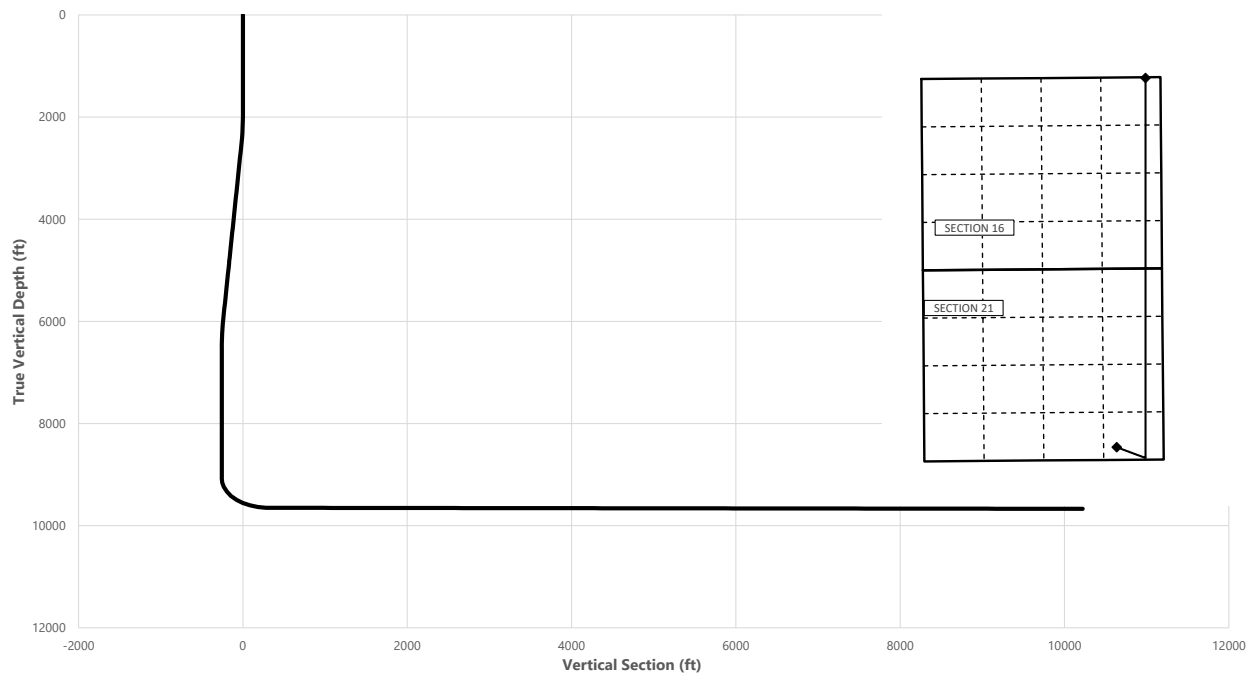
FLOOFY CAT 21-16 FED STATE COM 528H



Well: FLOOFY CAT 21-16 FED STATE COM 528H
County: Lea
Wellbore: Permit Plan
Design: Permit Plan #1

Geodetic System: US State Plane 1983
Datum: North American Datum 1927
Ellipsoid: Clarke 1866
Zone: 3001 - NM East (NAD83)

MD (ft)	INC (°)	AZI (°)	TVD (ft)	NS (ft)	EW (ft)	VS (ft)	DLS (°/100ft)	Comment
0.00	0.00	0.00	0.00	0.00	0.00	0.00	0.00	SHL
2000.00	0.00	115.00	2000.00	0.00	0.00	0.00	0.00	Start Tangent
2500.00	10.00	115.00	2497.47	-18.39	39.44	-15.90	2.00	Hold Tangent
6040.55	10.00	115.00	5984.23	-278.22	596.65	-240.55	0.00	Drop to Vertical
6540.55	0.00	115.00	6481.69	-296.62	636.10	-256.45	2.00	Hold Vertical
9135.90	0.00	0.00	9077.04	-296.62	636.10	-256.45	0.00	KOP
10034.75	89.88	0.00	9650.00	275.19	636.10	314.24	10.00	Landing Point
19961.40	89.88	0.00	9670.00	10201.82	636.10	10221.63	0.00	BHL



Key Depths	MD (ft)	TVD (ft)
Rustler	1160.00	1160.00
Salt	2604.12	2600.00
Base of Salt	4843.13	4805.00
Delaware	4878.67	4840.00
Cherry Canyon	6026.10	5970.00
Brushy Canyon	6968.86	6910.00
1st Bone Spring Lime	8698.86	8640.00
Avalon b / Point of Penetration	9219.15	9160.00
exit	19881.40	9669.85

SHL
KOP
Point of Penetration
Exit
BHL

MD (ft)	TVD (ft)	Lat (°)	Long (°)	Section Footages
0.00	0.00	32.2837	-103.6745	350' FSL, 1035' FEL of Sec 21 in T23S, R32E
9135.90	9077.04	32.2829	-103.6724	49' FSL, 401' FEL of Sec 21 in T23S, R32E
9219.15	9160.00	32.2831	-103.6721	100' FEL, 330' FEL of Sec 21 in T23S, R32E
19881.40	9669.85	32.3116	-103.6721	100' FNL, 330' FEL of Sec 16 in T23S, R32E
19961.40	9670.00	32.3118	-103.6722	20' FNL, 330' FEL of Sec 16 in T23S, R32E

FLOOFY CAT 21-16 FED STATE COM 528H



Well: FLOOFY CAT 21-16 FED STATE COM 528H
County: Lea
Wellbore: Permit Plan
Design: Permit Plan #1

Geodetic System: US State Plane 1983
Datum: North American Datum 1927
Ellipsoid: Clarke 1866
Zone: 3001 - NM East (NAD83)

MD (ft)	INC (°)	AZI (°)	TVD (ft)	NS (ft)	EW (ft)	VS (ft)	DLS (°/100ft)	Comment
0.00	0.00	0.00	0.00	0.00	0.00	0.00	0.00	SHL
100.00	0.00	115.00	100.00	0.00	0.00	0.00	0.00	
200.00	0.00	115.00	200.00	0.00	0.00	0.00	0.00	
300.00	0.00	115.00	300.00	0.00	0.00	0.00	0.00	
400.00	0.00	115.00	400.00	0.00	0.00	0.00	0.00	
500.00	0.00	115.00	500.00	0.00	0.00	0.00	0.00	
600.00	0.00	115.00	600.00	0.00	0.00	0.00	0.00	
700.00	0.00	115.00	700.00	0.00	0.00	0.00	0.00	
800.00	0.00	115.00	800.00	0.00	0.00	0.00	0.00	
900.00	0.00	115.00	900.00	0.00	0.00	0.00	0.00	
1000.00	0.00	115.00	1000.00	0.00	0.00	0.00	0.00	
1100.00	0.00	115.00	1100.00	0.00	0.00	0.00	0.00	
1160.00	0.00	115.00	1160.00	0.00	0.00	0.00	0.00	Rustler
1200.00	0.00	115.00	1200.00	0.00	0.00	0.00	0.00	
1300.00	0.00	115.00	1300.00	0.00	0.00	0.00	0.00	
1400.00	0.00	115.00	1400.00	0.00	0.00	0.00	0.00	
1500.00	0.00	115.00	1500.00	0.00	0.00	0.00	0.00	
1600.00	0.00	115.00	1600.00	0.00	0.00	0.00	0.00	
1700.00	0.00	115.00	1700.00	0.00	0.00	0.00	0.00	
1800.00	0.00	115.00	1800.00	0.00	0.00	0.00	0.00	
1900.00	0.00	115.00	1900.00	0.00	0.00	0.00	0.00	
2000.00	0.00	115.00	2000.00	0.00	0.00	0.00	0.00	Start Tangent
2100.00	2.00	115.00	2099.98	-0.74	1.58	-0.64	2.00	
2200.00	4.00	115.00	2199.84	-2.95	6.32	-2.55	2.00	
2300.00	6.00	115.00	2299.45	-6.63	14.22	-5.73	2.00	
2400.00	8.00	115.00	2398.70	-11.78	25.27	-10.19	2.00	
2500.00	10.00	115.00	2497.47	-18.39	39.44	-15.90	2.00	Hold Tangent
2600.00	10.00	115.00	2595.95	-25.73	55.18	-22.25	0.00	
2604.12	10.00	115.00	2600.00	-26.03	55.83	-22.51	0.00	Salt
2700.00	10.00	115.00	2694.43	-33.07	70.92	-28.59	0.00	
2800.00	10.00	115.00	2792.91	-40.41	86.66	-34.94	0.00	
2900.00	10.00	115.00	2891.39	-47.75	102.40	-41.28	0.00	
3000.00	10.00	115.00	2989.87	-55.09	118.13	-47.63	0.00	
3100.00	10.00	115.00	3088.35	-62.43	133.87	-53.97	0.00	
3200.00	10.00	115.00	3186.83	-69.76	149.61	-60.32	0.00	
3300.00	10.00	115.00	3285.31	-77.10	165.35	-66.66	0.00	
3400.00	10.00	115.00	3383.79	-84.44	181.09	-73.01	0.00	
3500.00	10.00	115.00	3482.27	-91.78	196.82	-79.35	0.00	
3600.00	10.00	115.00	3580.75	-99.12	212.56	-85.70	0.00	
3700.00	10.00	115.00	3679.23	-106.46	228.30	-92.04	0.00	
3800.00	10.00	115.00	3777.72	-113.80	244.04	-98.39	0.00	
3900.00	10.00	115.00	3876.20	-121.13	259.78	-104.73	0.00	
4000.00	10.00	115.00	3974.68	-128.47	275.51	-111.08	0.00	
4100.00	10.00	115.00	4073.16	-135.81	291.25	-117.42	0.00	
4200.00	10.00	115.00	4171.64	-143.15	306.99	-123.77	0.00	
4300.00	10.00	115.00	4270.12	-150.49	322.73	-130.11	0.00	
4400.00	10.00	115.00	4368.60	-157.83	338.46	-136.46	0.00	
4500.00	10.00	115.00	4467.08	-165.17	354.20	-142.80	0.00	
4600.00	10.00	115.00	4565.56	-172.51	369.94	-149.15	0.00	
4700.00	10.00	115.00	4664.04	-179.84	385.68	-155.49	0.00	
4800.00	10.00	115.00	4762.52	-187.18	401.42	-161.84	0.00	
4843.13	10.00	115.00	4805.00	-190.35	408.20	-164.58	0.00	Base of Salt
4878.67	10.00	115.00	4840.00	-192.96	413.80	-166.83	0.00	Delaware
4900.00	10.00	115.00	4861.00	-194.52	417.15	-168.18	0.00	
5000.00	10.00	115.00	4959.48	-201.86	432.89	-174.53	0.00	
5100.00	10.00	115.00	5057.97	-209.20	448.63	-180.87	0.00	
5200.00	10.00	115.00	5156.45	-216.54	464.37	-187.22	0.00	
5300.00	10.00	115.00	5254.93	-223.88	480.11	-193.56	0.00	
5400.00	10.00	115.00	5353.41	-231.21	495.84	-199.91	0.00	
5500.00	10.00	115.00	5451.89	-238.55	511.58	-206.25	0.00	
5600.00	10.00	115.00	5550.37	-245.89	527.32	-212.60	0.00	
5700.00	10.00	115.00	5648.85	-253.23	543.06	-218.94	0.00	
5800.00	10.00	115.00	5747.33	-260.57	558.79	-225.29	0.00	
5900.00	10.00	115.00	5845.81	-267.91	574.53	-231.63	0.00	
6000.00	10.00	115.00	5944.29	-275.25	590.27	-237.98	0.00	
6026.10	10.00	115.00	5970.00	-277.16	594.38	-239.64	0.00	Cherry Canyon
6040.55	10.00	115.00	5984.23	-278.22	596.65	-240.55	0.00	Drop to Vertical
6100.00	8.81	115.00	6042.88	-282.33	605.46	-244.10	2.00	
6200.00	6.81	115.00	6141.94	-288.07	617.77	-249.07	2.00	
6300.00	4.81	115.00	6241.42	-292.35	626.95	-252.77	2.00	

FLOOFY CAT 21-16 FED STATE COM 528H



Well: FLOOFY CAT 21-16 FED STATE COM 528H
County: Lea
Wellbore: Permit Plan
Design: Permit Plan #1

Geodetic System: US State Plane 1983
Datum: North American Datum 1927
Ellipsoid: Clarke 1866
Zone: 3001 - NM East (NAD83)

MD (ft)	INC (")	AZI (")	TVD (ft)	NS (ft)	EW (ft)	VS (ft)	DLS (°/100ft)	Comment
6400.00	2.81	115.00	6341.20	-295.16	632.97	-255.20	2.00	
6500.00	0.81	115.00	6441.14	-296.50	635.84	-256.35	2.00	
6540.55	0.00	115.00	6481.69	-296.62	636.10	-256.45	2.00	Hold Vertical
6600.00	0.00	0.00	6541.14	-296.62	636.10	-256.46	0.00	
6700.00	0.00	0.00	6641.14	-296.62	636.10	-256.46	0.00	
6800.00	0.00	0.00	6741.14	-296.62	636.10	-256.46	0.00	
6900.00	0.00	0.00	6841.14	-296.62	636.10	-256.46	0.00	
6968.86	0.00	0.00	6910.00	-296.62	636.10	-256.46	0.00	Brushy Canyon
7000.00	0.00	0.00	6941.14	-296.62	636.10	-256.46	0.00	
7100.00	0.00	0.00	7041.14	-296.62	636.10	-256.46	0.00	
7200.00	0.00	0.00	7141.14	-296.62	636.10	-256.46	0.00	
7300.00	0.00	0.00	7241.14	-296.62	636.10	-256.46	0.00	
7400.00	0.00	0.00	7341.14	-296.62	636.10	-256.46	0.00	
7500.00	0.00	0.00	7441.14	-296.62	636.10	-256.46	0.00	
7600.00	0.00	0.00	7541.14	-296.62	636.10	-256.46	0.00	
7700.00	0.00	0.00	7641.14	-296.62	636.10	-256.46	0.00	
7800.00	0.00	0.00	7741.14	-296.62	636.10	-256.46	0.00	
7900.00	0.00	0.00	7841.14	-296.62	636.10	-256.46	0.00	
8000.00	0.00	0.00	7941.14	-296.62	636.10	-256.46	0.00	
8100.00	0.00	0.00	8041.14	-296.62	636.10	-256.46	0.00	
8200.00	0.00	0.00	8141.14	-296.62	636.10	-256.46	0.00	
8300.00	0.00	0.00	8241.14	-296.62	636.10	-256.46	0.00	
8400.00	0.00	0.00	8341.14	-296.62	636.10	-256.46	0.00	
8500.00	0.00	0.00	8441.14	-296.62	636.10	-256.46	0.00	
8600.00	0.00	0.00	8541.14	-296.62	636.10	-256.46	0.00	
8698.86	0.00	0.00	8640.00	-296.62	636.10	-256.46	0.00	1st Bone Spring Lime
8700.00	0.00	0.00	8641.14	-296.62	636.10	-256.46	0.00	
8800.00	0.00	0.00	8741.14	-296.62	636.10	-256.46	0.00	
8900.00	0.00	0.00	8841.14	-296.62	636.10	-256.46	0.00	
9000.00	0.00	0.00	8941.14	-296.62	636.10	-256.46	0.00	
9100.00	0.00	0.00	9041.14	-296.62	636.10	-256.46	0.00	
9135.90	0.00	0.00	9077.04	-296.62	636.10	-256.45	0.00	KOP
9200.00	6.41	0.00	9141.01	-293.04	636.10	-252.88	10.00	
9219.15	8.32	0.00	9160.00	-290.58	636.10	-250.43	10.00	Avalon b / Point of Penetration
9300.00	16.41	0.00	9238.91	-273.28	636.10	-233.16	10.00	
9400.00	26.41	0.00	9331.89	-236.82	636.10	-196.78	10.00	
9500.00	36.41	0.00	9417.13	-184.77	636.10	-144.83	10.00	
9600.00	46.41	0.00	9492.03	-118.71	636.10	-78.90	10.00	
9700.00	56.41	0.00	9554.33	-40.65	636.10	-0.98	10.00	
9800.00	66.41	0.00	9602.12	47.05	636.10	86.54	10.00	
9900.00	76.41	0.00	9633.96	141.71	636.10	181.02	10.00	
10000.00	86.41	0.00	9648.88	240.46	636.10	279.58	10.00	
10034.75	89.88	0.00	9650.00	275.19	636.10	314.24	10.00	Landing Point
10100.00	89.88	0.00	9650.13	340.44	636.10	379.37	0.00	
10200.00	89.88	0.00	9650.33	440.44	636.10	479.17	0.00	
10300.00	89.88	0.00	9650.53	540.44	636.10	578.98	0.00	
10400.00	89.88	0.00	9650.74	640.44	636.10	678.78	0.00	
10500.00	89.88	0.00	9650.94	740.44	636.10	778.59	0.00	
10600.00	89.88	0.00	9651.14	840.44	636.10	878.40	0.00	
10700.00	89.88	0.00	9651.34	940.44	636.10	978.20	0.00	
10800.00	89.88	0.00	9651.54	1040.44	636.10	1078.01	0.00	
10900.00	89.88	0.00	9651.74	1140.44	636.10	1177.81	0.00	
11000.00	89.88	0.00	9651.95	1240.44	636.10	1277.62	0.00	
11100.00	89.88	0.00	9652.15	1340.44	636.10	1377.42	0.00	
11200.00	89.88	0.00	9652.35	1440.44	636.10	1477.23	0.00	
11300.00	89.88	0.00	9652.55	1540.44	636.10	1577.04	0.00	
11400.00	89.88	0.00	9652.75	1640.44	636.10	1676.84	0.00	
11500.00	89.88	0.00	9652.95	1740.44	636.10	1776.65	0.00	
11600.00	89.88	0.00	9653.16	1840.44	636.10	1876.45	0.00	
11700.00	89.88	0.00	9653.36	1940.44	636.10	1976.26	0.00	
11800.00	89.88	0.00	9653.56	2040.44	636.10	2076.07	0.00	
11900.00	89.88	0.00	9653.76	2140.44	636.10	2175.87	0.00	
12000.00	89.88	0.00	9653.96	2240.44	636.10	2275.68	0.00	
12100.00	89.88	0.00	9654.16	2340.44	636.10	2375.48	0.00	
12200.00	89.88	0.00	9654.37	2440.44	636.10	2475.29	0.00	
12300.00	89.88	0.00	9654.57	2540.44	636.10	2575.10	0.00	
12400.00	89.88	0.00	9654.77	2640.43	636.10	2674.90	0.00	
12500.00	89.88	0.00	9654.97	2740.43	636.10	2774.71	0.00	
12600.00	89.88	0.00	9655.17	2840.43	636.10	2874.51	0.00	
12700.00	89.88	0.00	9655.37	2940.43	636.10	2974.32	0.00	

FLOOFY CAT 21-16 FED STATE COM 528H



Well: FLOOFY CAT 21-16 FED STATE COM 528H
County: Lea
Wellbore: Permit Plan
Design: Permit Plan #1

Geodetic System: US State Plane 1983
Datum: North American Datum 1927
Ellipsoid: Clarke 1866
Zone: 3001 - NM East (NAD83)

MD (ft)	INC (")	AZI (")	TVD (ft)	NS (ft)	EW (ft)	VS (ft)	DLS (°/100ft)	Comment
12800.00	89.88	0.00	9655.58	3040.43	636.10	3074.13	0.00	
12900.00	89.88	0.00	9655.78	3140.43	636.10	3173.93	0.00	
13000.00	89.88	0.00	9655.98	3240.43	636.10	3273.74	0.00	
13100.00	89.88	0.00	9656.18	3340.43	636.10	3373.54	0.00	
13200.00	89.88	0.00	9656.38	3440.43	636.10	3473.35	0.00	
13300.00	89.88	0.00	9656.58	3540.43	636.10	3573.16	0.00	
13400.00	89.88	0.00	9656.78	3640.43	636.10	3672.96	0.00	
13500.00	89.88	0.00	9656.99	3740.43	636.10	3772.77	0.00	
13600.00	89.88	0.00	9657.19	3840.43	636.10	3872.57	0.00	
13700.00	89.88	0.00	9657.39	3940.43	636.10	3972.38	0.00	
13800.00	89.88	0.00	9657.59	4040.43	636.10	4072.19	0.00	
13900.00	89.88	0.00	9657.79	4140.43	636.10	4171.99	0.00	
14000.00	89.88	0.00	9657.99	4240.43	636.10	4271.80	0.00	
14100.00	89.88	0.00	9658.20	4340.43	636.10	4371.60	0.00	
14200.00	89.88	0.00	9658.40	4440.43	636.10	4471.41	0.00	
14300.00	89.88	0.00	9658.60	4540.43	636.10	4571.22	0.00	
14400.00	89.88	0.00	9658.80	4640.43	636.10	4671.02	0.00	
14500.00	89.88	0.00	9659.00	4740.43	636.10	4770.83	0.00	
14600.00	89.88	0.00	9659.20	4840.43	636.10	4870.63	0.00	
14700.00	89.88	0.00	9659.41	4940.43	636.10	4970.44	0.00	
14800.00	89.88	0.00	9659.61	5040.43	636.10	5070.25	0.00	
14900.00	89.88	0.00	9659.81	5140.43	636.10	5170.05	0.00	
15000.00	89.88	0.00	9660.01	5240.43	636.10	5269.86	0.00	
15100.00	89.88	0.00	9660.21	5340.43	636.10	5369.66	0.00	
15200.00	89.88	0.00	9660.41	5440.43	636.10	5469.47	0.00	
15300.00	89.88	0.00	9660.62	5540.43	636.10	5569.28	0.00	
15400.00	89.88	0.00	9660.82	5640.43	636.10	5669.08	0.00	
15500.00	89.88	0.00	9661.02	5740.43	636.10	5768.89	0.00	
15600.00	89.88	0.00	9661.22	5840.43	636.10	5868.69	0.00	
15700.00	89.88	0.00	9661.42	5940.43	636.10	5968.50	0.00	
15800.00	89.88	0.00	9661.62	6040.43	636.10	6068.31	0.00	
15900.00	89.88	0.00	9661.83	6140.43	636.10	6168.11	0.00	
16000.00	89.88	0.00	9662.03	6240.43	636.10	6267.92	0.00	
16100.00	89.88	0.00	9662.23	6340.43	636.10	6367.72	0.00	
16200.00	89.88	0.00	9662.43	6440.43	636.10	6467.53	0.00	
16300.00	89.88	0.00	9662.63	6540.43	636.10	6567.34	0.00	
16400.00	89.88	0.00	9662.83	6640.43	636.10	6667.14	0.00	
16500.00	89.88	0.00	9663.04	6740.43	636.10	6766.95	0.00	
16600.00	89.88	0.00	9663.24	6840.43	636.10	6866.75	0.00	
16700.00	89.88	0.00	9663.44	6940.43	636.10	6966.56	0.00	
16800.00	89.88	0.00	9663.64	7040.43	636.10	7066.37	0.00	
16900.00	89.88	0.00	9663.84	7140.43	636.10	7166.17	0.00	
17000.00	89.88	0.00	9664.04	7240.43	636.10	7265.98	0.00	
17100.00	89.88	0.00	9664.24	7340.43	636.10	7365.78	0.00	
17200.00	89.88	0.00	9664.45	7440.43	636.10	7465.59	0.00	
17300.00	89.88	0.00	9664.65	7540.42	636.10	7565.39	0.00	
17400.00	89.88	0.00	9664.85	7640.42	636.10	7665.20	0.00	
17500.00	89.88	0.00	9665.05	7740.42	636.10	7765.01	0.00	
17600.00	89.88	0.00	9665.25	7840.42	636.10	7864.81	0.00	
17700.00	89.88	0.00	9665.45	7940.42	636.10	7964.62	0.00	
17800.00	89.88	0.00	9665.66	8040.42	636.10	8064.42	0.00	
17900.00	89.88	0.00	9665.86	8140.42	636.10	8164.23	0.00	
18000.00	89.88	0.00	9666.06	8240.42	636.10	8264.04	0.00	
18100.00	89.88	0.00	9666.26	8340.42	636.10	8363.84	0.00	
18200.00	89.88	0.00	9666.46	8440.42	636.10	8463.65	0.00	
18300.00	89.88	0.00	9666.66	8540.42	636.10	8563.45	0.00	
18400.00	89.88	0.00	9666.87	8640.42	636.10	8663.26	0.00	
18500.00	89.88	0.00	9667.07	8740.42	636.10	8763.07	0.00	
18600.00	89.88	0.00	9667.27	8840.42	636.10	8862.87	0.00	
18700.00	89.88	0.00	9667.47	8940.42	636.10	8962.68	0.00	
18800.00	89.88	0.00	9667.67	9040.42	636.10	9062.48	0.00	
18900.00	89.88	0.00	9667.87	9140.42	636.10	9162.29	0.00	
19000.00	89.88	0.00	9668.08	9240.42	636.10	9262.10	0.00	
19100.00	89.88	0.00	9668.28	9340.42	636.10	9361.90	0.00	
19200.00	89.88	0.00	9668.48	9440.42	636.10	9461.71	0.00	
19300.00	89.88	0.00	9668.68	9540.42	636.10	9561.51	0.00	
19400.00	89.88	0.00	9668.88	9640.42	636.10	9661.32	0.00	
19500.00	89.88	0.00	9669.08	9740.42	636.10	9761.13	0.00	
19600.00	89.88	0.00	9669.29	9840.42	636.10	9860.93	0.00	
19700.00	89.88	0.00	9669.49	9940.42	636.10	9960.74	0.00	

FLOOFY CAT 21-16 FED STATE COM 528H



Well: FLOOFY CAT 21-16 FED STATE COM 528H
County: Lea
Wellbore: Permit Plan
Design: Permit Plan #1

Geodetic System: US State Plane 1983
Datum: North American Datum 1927
Ellipsoid: Clarke 1866
Zone: 3001 - NM East (NAD83)

MD	INC	AZI	TVD	NS	EW	VS	DLS	Comment
(ft)	(°)	(°)	(ft)	(ft)	(ft)	(ft)	(°/100ft)	
19800.00	89.88	0.00	9669.69	10040.42	636.10	10060.54	0.00	
19881.40	89.88	0.00	9669.85	10121.82	636.10	10141.79	0.00	exit
19900.00	89.88	0.00	9669.89	10140.42	636.10	10160.35	0.00	
19961.40	89.88	0.00	9670.00	10201.82	636.10	10221.63	0.00	BHL

FLOOFY CAT 21-16 FED STATE COM 528H

Well: FLOOFY CAT 21-16 FED STATE COM 528H

County: Lea

Wellbore: Permit Plan

Design: Permit Plan #1

Geodetic System: US State Plane 1983

Datum: North American Datum 1927

Ellipsoid: Clarke 1866

Zone: 3001 - NM East (NAD83)

MD	INC	AZI	TVD	NS	EW	VS	DLS	Comment
(ft)	(°)	(°)	(ft)	(ft)	(ft)	(ft)	(°/100ft)	

13-5/8" 5M BOPE & Closed Loop Equipment Schematic



A multibowl wellhead may be used. The BOP will be tested per Onshore Order #2 after installation on the surface casing which will cover testing requirements for a maximum of 30 days. If any seal subject to test pressure is broken the system must be tested.

Devon proposes using a multi-bowl wellhead assembly. This assembly will only be tested when installed on the surface casing. Minimum working pressure of the blowout preventer (BOP) and related equipment (BOPE) required for drilling below the surface casing shoe shall be 5000 (5M) psi.

- Wellhead will be installed by wellhead representatives.
- If the welding is performed by a third party, the wellhead representative will monitor the temperature to verify that it does not exceed the maximum temperature of the seal.
- Wellhead representative will install the test plug for the initial BOP test.
- Wellhead company will install a solid steel body pack-off to completely isolate the lower head after cementing intermediate casing. After installation of the pack-off, the pack-off and the lower flange will be tested to 5M, as shown on the attached schematic. Everything above the pack-off will not have been altered whatsoever from the initial nipple up. Therefore the BOP components will not be retested at that time.
- If the cement does not circulate and one inch operations would have been possible with a standard wellhead, the well head will be cut and top out operations will be conducted.
- Devon will pressure test all seals above and below the mandrel (but still above the casing) to full working pressure rating.
- Devon will test the casing to 0.22 psi/ft or 1500 psi, whichever is greater, as per Onshore Order #2.

After running the surface casing, a 13-5/8" BOP/BOPE system with a minimum rating of 5M will be installed on the wellhead system and will undergo a 250 psi low pressure test followed by a 5,000 psi high pressure test. The 5,000 psi high and 250 psi low test will cover testing requirements a maximum of 30 days, as per Onshore Order #2. If the well is not complete within 30 days of this BOP test, another full BOP test will be conducted, as per Onshore Order #2.

After running the intermediate casing with a mandrel hanger, the 13-5/8" BOP/BOPE system with a minimum rating of 5M will already be installed on the wellhead.

The pipe rams will be operated and checked each 24 hour period and each time the drill pipe is out of the hole. These tests will be logged in the daily driller's log. A 2" kill line and 3" choke line will be incorporated into the drilling spool below the ram BOP. In addition to the rams and annular preventer, additional BOP accessories include a kelly cock, floor safety valve, choke lines, and choke manifold rated at 5,000 psi WP.

Devon's proposed wellhead manufactures will be FMC Technologies, Cactus Wellhead, or Cameron.



**PECOS DISTRICT
DRILLING CONDITIONS OF APPROVAL**

OPERATOR'S NAME: LEASE NO.: LOCATION: COUNTY:	Devon Energy Production Company LP NMNM86153 Section 21, T.23 S., R.32 E., NMPM Lea County, New Mexico
--	---

WELL NAME & NO.: SURFACE HOLE FOOTAGE: BOTTOM HOLE FOOTAGE	Floofy Cat 21-16 Fed State Com 121H 500'/S & 820'/W 20'/N & 660'/W
---	---

WELL NAME & NO.: SURFACE HOLE FOOTAGE: BOTTOM HOLE FOOTAGE	Floofy Cat 21-16 Fed State Com 122H 500'/S & 2310'/W 20'/N & 1980'/W
---	---

WELL NAME & NO.: SURFACE HOLE FOOTAGE: BOTTOM HOLE FOOTAGE	Floofy Cat 21-16 Fed State Com 123H 350'/S & 2633'/E 20'/N & 1980'/E
---	---

WELL NAME & NO.: SURFACE HOLE FOOTAGE: BOTTOM HOLE FOOTAGE	Floofy Cat 21-16 Fed State Com 124H 350'/S & 1065'/E 20'/N & 660'/E
---	--

WELL NAME & NO.: SURFACE HOLE FOOTAGE: BOTTOM HOLE FOOTAGE	Floofy Cat 21-16 Fed State Com 521H 500'/S & 790'/W 20'/N & 330'/W
---	---

WELL NAME & NO.: SURFACE HOLE FOOTAGE: BOTTOM HOLE FOOTAGE	Floofy Cat 21-16 Fed State Com 522H 500'/S & 850'/W 20'/N & 990'/W
---	---

WELL NAME & NO.: SURFACE HOLE FOOTAGE: BOTTOM HOLE FOOTAGE	Floofy Cat 21-16 Fed State Com 523H 500'/S & 2280'/W 20'/N & 1650'/W
---	---

WELL NAME & NO.: SURFACE HOLE FOOTAGE: BOTTOM HOLE FOOTAGE	Floofy Cat 21-16 Fed State Com 524H 500'/S & 2340'/W 20'/N & 2310'/W
---	---

WELL NAME & NO.: SURFACE HOLE FOOTAGE: BOTTOM HOLE FOOTAGE	Floofy Cat 21-16 Fed State Com 525H 350'/S & 2625'/W 20'/N & 2310'/E
---	---

WELL NAME & NO.:	Floofy Cat 21-16 Fed State Com 526H
SURFACE HOLE FOOTAGE:	350'/S & 2603'/E
BOTTOM HOLE FOOTAGE:	20'/N & 1650'/E

WELL NAME & NO.:	Floofy Cat 21-16 Fed State Com 527H
SURFACE HOLE FOOTAGE:	350'/S & 1095'/E
BOTTOM HOLE FOOTAGE:	20'/N & 990'/E

WELL NAME & NO.:	Floofy Cat 21-16 Fed State Com 528H
SURFACE HOLE FOOTAGE:	350'/S & 1035'/E
BOTTOM HOLE FOOTAGE:	20'/N & 330'/E

COA

H2S	<input checked="" type="checkbox"/> Yes	<input type="checkbox"/> No	
Potash	<input checked="" type="checkbox"/> None	<input type="checkbox"/> Secretary	<input type="checkbox"/> R-111-P
Cave/Karst Potential	<input checked="" type="checkbox"/> Low	<input type="checkbox"/> Medium	<input type="checkbox"/> High
Cave/Karst Potential	<input type="checkbox"/> Critical		
Variance	<input type="checkbox"/> None	<input checked="" type="checkbox"/> Flex Hose	<input type="checkbox"/> Other
Wellhead	<input type="checkbox"/> Conventional	<input type="checkbox"/> Multibowl	<input checked="" type="checkbox"/> Both
Wellhead Variance	<input type="checkbox"/> Diverter		
Other	<input type="checkbox"/> 4 String Area	<input type="checkbox"/> Capitan Reef	<input type="checkbox"/> WIPP
Other	<input checked="" type="checkbox"/> Fluid Filled	<input type="checkbox"/> Pilot Hole	<input type="checkbox"/> Open Annulus
Cementing	<input checked="" type="checkbox"/> Cement Squeeze	<input type="checkbox"/> EchoMeter	
Special Requirements	<input type="checkbox"/> Water Disposal	<input checked="" type="checkbox"/> COM	<input type="checkbox"/> Unit
Special Requirements Variance	<input type="checkbox"/> Break Testing	<input type="checkbox"/> Offline Cementing	

A. HYDROGEN SULFIDE

A Hydrogen Sulfide (H2S) Drilling Plan shall be activated 500 feet prior to drilling into the **Sand Dunes and Triste Draw** formation. As a result, the Hydrogen Sulfide area must meet Onshore Order 6 requirements, which includes equipment and personnel/public protection items. If Hydrogen Sulfide is encountered, please provide measured values and formations to the BLM.

B. CASING

1. The **13-3/8** inch surface casing shall be set at approximately **1332 feet** (a minimum of **25 feet (Lea County)** into the Rustler Anhydrite and above the salt) and cemented to the surface.
 - a. If cement does not circulate to the surface, the appropriate BLM office shall be notified and a temperature survey utilizing an electronic type temperature survey with surface log readout will be used or a cement bond log shall be run

to verify the top of the cement. Temperature survey will be run a minimum of six hours after pumping cement and ideally between 8-10 hours after completing the cement job.

- b. Wait on cement (WOC) time for a primary cement job will be a minimum of **8 hours** or 500 pounds compressive strength, whichever is greater. (This is to include the lead cement)
- c. Wait on cement (WOC) time for a remedial job will be a minimum of 4 hours after bringing cement to surface or 500 pounds compressive strength, whichever is greater.
- d. If cement falls back, remedial cementing will be done prior to drilling out that string.

Intermediate casing must be kept fluid filled to meet BLM minimum collapse requirement.

2. The minimum required fill of cement behind the **9-5/8** inch intermediate casing is:
 - Cement to surface. If cement does not circulate see B.1.a, c-d above.
Cement excess is less than 25%, more cement might be required.

Operator has proposed to pump down 13-3/8" X 9-5/8" annulus after primary cementing stage. Operator must run a CBL from TD of the 9-5/8" casing to surface. Submit results to the BLM.

If cement does not tie-back into the previous casing shoe, a third stage remediation BH may be performed. The appropriate BLM office shall be notified.

3. The minimum required fill of cement behind the **5-1/2** inch production casing is:
 - Cement should tie-back at least **200 feet** into previous casing string. Operator shall provide method of verification.
Cement excess is less than 25%, more cement might be required.

C. PRESSURE CONTROL

1. Variance approved to use flex line from BOP to choke manifold. Manufacturer's specification to be readily available. No external damage to flex line. Flex line to be installed as straight as possible (no hard bends).'
- 2.

Option 1:

- a. Minimum working pressure of the blowout preventer (BOP) and related equipment (BOPE) required for drilling below the surface casing shoe shall be **5000 (5M)** psi.

- b. Minimum working pressure of the blowout preventer (BOP) and related equipment (BOPE) required for drilling below the 9-5/8 inch intermediate casing shoe shall be **5000 (5M)** psi.

Option 2:

Operator has proposed a multi-bowl wellhead assembly. This assembly will only be tested when installed on the 13-3/8 inch surface casing. Minimum working pressure of the blowout preventer (BOP) and related equipment (BOPE) required for drilling below the surface casing shoe shall be **5000 (5M)** psi.

- a. Wellhead shall be installed by manufacturer's representatives, submit documentation with subsequent sundry.
- b. If the welding is performed by a third party, the manufacturer's representative shall monitor the temperature to verify that it does not exceed the maximum temperature of the seal.
- c. Manufacturer representative shall install the test plug for the initial BOP test.
- d. If the cement does not circulate and one inch operations would have been possible with a standard wellhead, the well head shall be cut off, cementing operations performed and another wellhead installed.
- e. Whenever any seal subject to test pressure is broken, all the tests in OOGO2.III.A.2.i must be followed.

D. SPECIAL REQUIREMENT (S)

Communitization Agreement

- The operator will submit a Communitization Agreement to the Santa Fe Office, 301 Dinosaur Trail Santa Fe, New Mexico 87508, at least 90 days before the anticipated date of first production from a well subject to a spacing order issued by the New Mexico Oil Conservation Division. The Communitization Agreement will include the signatures of all working interest owners in all Federal and Indian leases subject to the Communitization Agreement (i.e., operating rights owners and lessees of record), or certification that the operator has obtained the written signatures of all such owners and will make those signatures available to the BLM immediately upon request.
- If the operator does not comply with this condition of approval, the BLM may take enforcement actions that include, but are not limited to, those specified in 43 CFR 3163.1.
- In addition, the well sign shall include the surface and bottom hole lease numbers. When the Communitization Agreement number is known, it shall also be on the sign.

GENERAL REQUIREMENTS

The BLM is to be notified in advance for a representative to witness:

- a. Spudding well (minimum of 24 hours)
- b. Setting and/or Cementing of all casing strings (minimum of 4 hours)
- c. BOPE tests (minimum of 4 hours)

☒ Eddy County

Call the Carlsbad Field Office, 620 East Greene St., Carlsbad, NM 88220,
(575) 361-2822

☒ Lea County

Call the Hobbs Field Station, 414 West Taylor, Hobbs NM 88240, (575)
393-3612

1. Unless the production casing has been run and cemented or the well has been properly plugged, the drilling rig shall not be removed from over the hole without prior approval.
 - a. In the event the operator has proposed to drill multiple wells utilizing a skid/walking rig. Operator shall secure the wellbore on the current well, after installing and testing the wellhead, by installing a blind flange of like pressure rating to the wellhead and a pressure gauge that can be monitored while drilling is performed on the other well(s).
 - b. When the operator proposes to set surface casing with Spudder Rig
 - Notify the BLM when moving in and removing the Spudder Rig.
 - Notify the BLM when moving in the 2nd Rig. Rig to be moved in within 90 days of notification that Spudder Rig has left the location.
 - BOP/BOPE test to be conducted per Onshore Oil and Gas Order No. 2 as soon as 2nd Rig is rigged up on well.
2. Floor controls are required for 3M or Greater systems. These controls will be on the rig floor, unobstructed, readily accessible to the driller and will be operational at all times during drilling and/or completion activities. Rig floor is defined as the area immediately around the rotary table; the area immediately above the substructure on which the draw works are located, this does not include the dog house or stairway area.
3. The record of the drilling rate along with the GR/N well log run from TD to surface (horizontal well – vertical portion of hole) shall be submitted to the BLM office as well as all other logs run on the borehole 30 days from completion. If available, a digital copy of the logs is to be submitted in addition to the paper copies. The Rustler top and top and bottom of Salt are to be recorded on the Completion Report.

A. CASING

1. Changes to the approved APD casing program need prior approval if the items substituted are of lesser grade or different casing size or are Non-API. The Operator can exchange the components of the proposal with that of superior strength (i.e. changing from J-55 to N-80, or from 36# to 40#). Changes to the approved cement program need prior approval if the altered cement plan has less volume or strength or if the changes are substantial (i.e. Multistage tool, ECP, etc.). The initial wellhead installed on the well will remain on the well with spools used as needed.
2. Wait on cement (WOC) for Potash Areas: After cementing but before commencing any tests, the casing string shall stand cemented under pressure until both of the following conditions have been met: 1) cement reaches a minimum compressive strength of 500 psi for all cement blends, 2) until cement has been in place at least 24 hours. WOC time will be recorded in the driller's log. The casing integrity test can be done (prior to the cement setting up) immediately after bumping the plug.
3. Wait on cement (WOC) for Water Basin: After cementing but before commencing any tests, the casing string shall stand cemented under pressure until both of the following conditions have been met: 1) cement reaches a minimum compressive strength of 500 psi at the shoe, 2) until cement has been in place at least 8 hours. WOC time will be recorded in the driller's log. See individual casing strings for details regarding lead cement slurry requirements. The casing integrity test can be done (prior to the cement setting up) immediately after bumping the plug.
4. Provide compressive strengths including hours to reach required 500 pounds compressive strength prior to cementing each casing string. Have well specific cement details onsite prior to pumping the cement for each casing string.
5. No pea gravel permitted for remedial or fall back remedial without prior authorization from the BLM engineer.
6. On that portion of any well approved for a 5M BOPE system or greater, a pressure integrity test of each casing shoe shall be performed. Formation at the shoe shall be tested to a minimum of the mud weight equivalent anticipated to control the formation pressure to the next casing depth or at total depth of the well. This test shall be performed before drilling more than 20 feet of new hole.
7. If hardband drill pipe is rotated inside casing, returns will be monitored for metal. If metal is found in samples, drill pipe will be pulled and rubber protectors which have a larger diameter than the tool joints of the drill pipe will be installed prior to continuing drilling operations.
8. Whenever a casing string is cemented in the R-111-P potash area, the NMOCD requirements shall be followed.

B. PRESSURE CONTROL

1. All blowout preventer (BOP) and related equipment (BOPE) shall comply with well control requirements as described in Onshore Oil and Gas Order No. 2 and API RP 53 Sec. 17.
2. If a variance is approved for a flexible hose to be installed from the BOP to the choke manifold, the following requirements apply: The flex line must meet the requirements of API 16C. Check condition of flexible line from BOP to choke manifold, replace if exterior is damaged or if line fails test. Line to be as straight as possible with no hard bends and is to be anchored according to Manufacturer's requirements. The flexible hose can be exchanged with a hose of equal size and equal or greater pressure rating. Anchor requirements, specification sheet and hydrostatic pressure test certification matching the hose in service, to be onsite for review. These documents shall be posted in the company man's trailer and on the rig floor.
3. 5M or higher system requires an HCR valve, remote kill line and annular to match. The remote kill line is to be installed prior to testing the system and tested to stack pressure.
4. If the operator has proposed a multi-bowl wellhead assembly in the APD. The following requirements must be met:
 - a. Wellhead shall be installed by manufacturer's representatives, submit documentation with subsequent sundry.
 - b. If the welding is performed by a third party, the manufacturer's representative shall monitor the temperature to verify that it does not exceed the maximum temperature of the seal.
 - c. Manufacturer representative shall install the test plug for the initial BOP test.
 - d. Whenever any seal subject to test pressure is broken, all the tests in OOGO2.III.A.2.i must be followed.
 - e. If the cement does not circulate and one inch operations would have been possible with a standard wellhead, the well head shall be cut off, cementing operations performed and another wellhead installed.
5. The appropriate BLM office shall be notified a minimum of 4 hours in advance for a representative to witness the tests.
 - a. In a water basin, for all casing strings utilizing slips, these are to be set as soon as the crew and rig are ready and any fallback cement remediation has been done. The casing cut-off and BOP installation can be initiated four hours after installing the slips, which will be approximately six hours after bumping the plug. For those casing strings not using slips, the minimum wait time before cut-off is eight hours after bumping the plug. BOP/BOPE testing can begin after cut-off or once cement reaches 500 psi compressive strength (including lead when specified), whichever is greater. However, if the float does not

hold, cut-off cannot be initiated until cement reaches 500 psi compressive strength (including lead when specified).

- b. In potash areas, for all casing strings utilizing slips, these are to be set as soon as the crew and rig are ready and any fallback cement remediation has been done. For all casing strings, casing cut-off and BOP installation can be initiated at twelve hours after bumping the plug. However, **no tests** shall commence until the cement has had a minimum of 24 hours setup time, except the casing pressure test can be initiated immediately after bumping the plug (only applies to single stage cement jobs).
- c. The tests shall be done by an independent service company utilizing a test plug not a cup or J-packer. The operator also has the option of utilizing an independent tester to test without a plug (i.e. against the casing) pursuant to Onshore Order 2 with the pressure not to exceed 70% of the burst rating for the casing. Any test against the casing must meet the WOC time for water basin (8 hours) or potash (24 hours) or 500 pounds compressive strength, whichever is greater, prior to initiating the test (see casing segment as lead cement may be critical item).
- d. The test shall be run on a 5000 psi chart for a 2-3M BOP/BOP, on a 10000 psi chart for a 5M BOP/BOPE and on a 15000 psi chart for a 10M BOP/BOPE. If a linear chart is used, it shall be a one hour chart. A circular chart shall have a maximum 2 hour clock. If a twelve hour or twenty-four hour chart is used, tester shall make a notation that it is run with a two hour clock.
- e. The results of the test shall be reported to the appropriate BLM office.
- f. All tests are required to be recorded on a calibrated test chart. A copy of the BOP/BOPE test chart and a copy of independent service company test will be submitted to the appropriate BLM office.
- g. The BOP/BOPE test shall include a low pressure test from 250 to 300 psi. The test will be held for a minimum of 10 minutes if test is done with a test plug and 30 minutes without a test plug. This test shall be performed prior to the test at full stack pressure.
- h. BOP/BOPE must be tested by an independent service company within 500 feet of the top of the Wolfcamp formation if the time between the setting of the intermediate casing and reaching this depth exceeds 20 days. This test does not exclude the test prior to drilling out the casing shoe as per Onshore Order No. 2.

C. DRILLING MUD

Mud system monitoring equipment, with derrick floor indicators and visual and audio alarms, shall be operating before drilling into the Wolfcamp formation, and shall be used until production casing is run and cemented.

D. WASTE MATERIAL AND FLUIDS

All waste (i.e. drilling fluids, trash, salts, chemicals, sewage, gray water, etc.) created as a result of drilling operations and completion operations shall be safely contained and disposed of properly at a waste disposal facility. No waste material or fluid shall be disposed of on the well location or surrounding area.

Porto-johns and trash containers will be on-location during fracturing operations or any other crew-intensive operations.



**Devon Energy Center
333 West Sheridan Avenue
Oklahoma City, Oklahoma 73102-5015**

Hydrogen Sulfide (H₂S) Contingency Plan

For

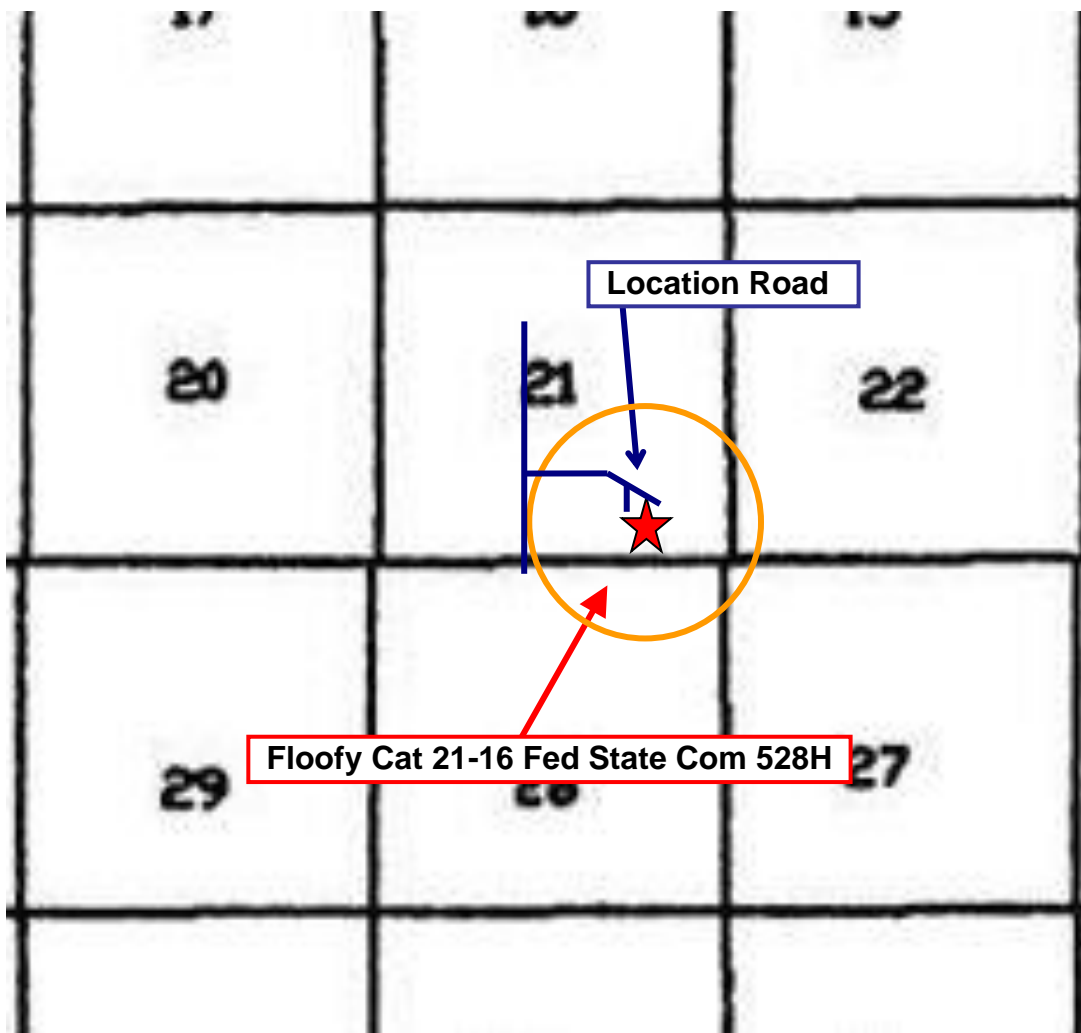
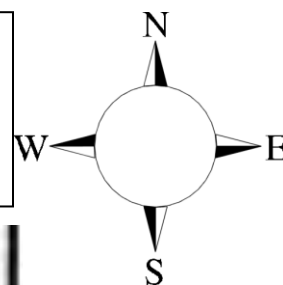
Floofy Cat 21-16 Fed State Com 528H

**Sec-21 T-23S R-32E
350 FSL & 1035' FEL
LAT. = 32.2838153' N (NAD83)
LONG = 103.6743976' W**

Lea County NM

Floofy Cat 21-16 Fed State Com 528H

This is an open drilling site. H₂S monitoring equipment and emergency response equipment will be used within 500' of zones known to contain H₂S, including warning signs, wind indicators and H₂S monitor.



Assumed 100 ppm **ROE = 3000'** (Radius of Exposure)
100 ppm H₂S concentration shall trigger activation of this plan.

Escape

Crews shall escape upwind of escaping gas in the event of an emergency release of gas. Escape can be facilitated from the location entrance road. Crews should then block the entrance to the location from the lease road so as not to allow anyone traversing into a hazardous area. The blockade should be at a safe distance outside of the ROE. There are no homes or buildings in or near the ROE.

Assumed 100 ppm ROE = 3000'

100 ppm H₂S concentration shall trigger activation of this plan.

Emergency Procedures

In the event of a release of gas containing H₂S, the first responder(s) must

- Isolate the area and prevent entry by other persons into the 100 ppm ROE.
- Evacuate any public places encompassed by the 100 ppm ROE.
- Be equipped with H₂S monitors and air packs in order to control the release.
- Use the “buddy system” to ensure no injuries occur during the response
- Take precautions to avoid personal injury during this operation.
- Contact operator and/or local officials to aid in operation. See list of phone numbers attached.
- Have received training in the
 - Detection of H₂S, and
 - Measures for protection against the gas,
 - Equipment used for protection and emergency response.

Ignition of Gas Source

Should control of the well be considered lost and ignition considered, take care to protect against exposure to Sulfur Dioxide (SO₂). Intentional ignition must be coordinated with the NMOCD and local officials. Additionally the NM State Police may become involved. NM State Police shall be the Incident Command on scene of any major release. Take care to protect downwind whenever there is an ignition of the gas

Characteristics of H₂S and SO₂

Common Name	Chemical Formula	Specific Gravity	Threshold Limit	Hazardous Limit	Lethal Concentration
Hydrogen Sulfide	H ₂ S	1.189 Air = 1	10 ppm	100 ppm/hr	600 ppm
Sulfur Dioxide	SO ₂	2.21 Air = 1	2 ppm	N/A	1000 ppm

Contacting Authorities

Devon Energy Corp. personnel must liaison with local and state agencies to ensure a proper response to a major release. Additionally, the OCD must be notified of the release as soon as possible but no later than 4 hours. Agencies will ask for information such as type and volume of release, wind direction, location of release, etc. Be prepared with all information available. The following call list of essential and potential responders has been prepared for use during a release. Devon Energy Corp. Company response must be in coordination with the State of New Mexico's 'Hazardous Materials Emergency Response Plan' (HMER)

Hydrogen Sulfide Drilling Operation Plan

I. HYDROGEN SULFIDE (H₂S) TRAINING

All personnel, whether regularly assigned, contracted, or employed on an unscheduled basis, will receive training from a qualified instructor in the following areas prior to commencing drilling operations on this well:

1. The hazards and characteristics of hydrogen sulfide (H₂S)
2. The proper use and maintenance of personal protective equipment and life support systems.
3. The proper use of H₂S detectors, alarms, warning systems, briefing areas, evacuation procedures, and prevailing winds.
4. The proper techniques for first aid and rescue procedures.

In addition, supervisory personnel will be trained in the following areas:

1. The effects of H₂S metal components. If high tensile tubulars are to be used, personnel will be trained in their special maintenance requirements.
2. Corrective action and shut-in procedures when drilling or reworking a well and blowout prevention and well control procedures.
3. The contents and requirements of the H₂S Drilling Operations Plan

There will be weekly H₂S and well control drills conducted for all personnel on each crew.

II. HYDROGEN SULFIDE TRAINING

Note: All H₂S safety equipment and systems will be installed, tested, and operational when drilling reaches a depth of 500 feet above, or three days prior to penetrating the first zone containing or reasonably expected to contain H₂S.

1. Well Control Equipment

- A. Flare line
- B. Choke manifold – Remotely Operated
- C. Blind rams and pipe rams to accommodate all pipe sizes with properly sized closing unit
- D. Auxiliary equipment may include if applicable: annular preventer and rotating head.
- E. Mud/Gas Separator

2. Protective equipment for essential personnel:

30-minute SCBA units located at briefing areas, as indicated on well site diagram, with escape units available in the top doghouse. As it may be difficult to communicate audibly while wearing these units, hand signals shall be utilized.

3. H₂S detection and monitoring equipment:

Portable H₂S monitors positioned on location for best coverage and response. These units have warning lights which activate when H₂S levels reach 10 ppm and audible sirens which activate at 15 ppm. Sensor locations:

- Bell nipple
- Possum Belly/Shale shaker
- Rig floor
- Choke manifold
- Cellar

Visual warning systems:

- A. Wind direction indicators as shown on well site diagram
- B. Caution/ Danger signs shall be posted on roads providing direct access to locations. Signs will be painted a high visibility yellow with black lettering of sufficient size to be reasonable distance from the immediate location. Bilingual signs will be used when appropriate.

4. Mud program:

The mud program has been designed to minimize the volume of H₂S circulated to surface. Proper mud weight, safe drilling practices and the use of H₂S scavengers will minimize hazards when penetrating H₂S bearing zones.

5. Metallurgy:

- A. All drill strings, casings, tubing, wellhead, blowout preventer, drilling spool, kill lines, choke manifold lines, and valves shall be H₂S trim.
- B. All elastomers used for packing and seals shall be H₂S trim.

6. Communication:

- A. Company personnel have/use cellular telephones in the field.
- B. Land line (telephone) communications at Office

7. Well testing:

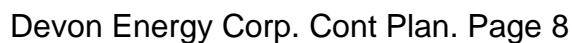
- A. Drill stem testing will be performed with a minimum number of personnel in the immediate vicinity, which are necessary to safety and adequately conduct the test. The drill stem testing will be conducted during daylight hours and formation fluids will not be flowed to the surface. All drill-stem-testing operations conducted in an H₂S environment will use the closed chamber method of testing.
- B. There will be no drill stem testing.

Delaware Basin Business Unit (DBBU) Key Company Contacts

Employee/Company Contract Representative	Position	Phone Number	After Hours Number
Jonathan Fisher (North)	Drilling Manager	832-967-7912	
Jason Hildebrand (South)	Drilling Manager	405-552-6514	
Rich Downey	Drilling VP	405-228-2415	
Josh Harvey	EHS Manager	405-228-2440	918-500-5536
Laura Wright	EHS Supervisor	405-552-5334	832-969-8145
Robert Glover	EHS Professional	575-703-5712	575-703-5712
Lane Frank	Lead EHS	580-579-7052	580-579-7052
Rickey Porter	Lead EHS	903-720-8315	903-720-8315
Ronnie Handy	Lead EHS	918-839-2046	918-839-2046
Brock Vise	Lead EHS	918-413-3291	918-413-3291

Delaware Basin Business Unit (DBBU) Emergency Contacts

County/Location	
Police / Sherriff	
Eddy County	575-616-7155
Lea County	575-397-9265
Loving County	432-377-2411
Winkler County	432-586-3461
Fire	
Eddy County	575-616-7155
Lea County	575-397-9265
Loving County	432-377-2411
Winkler County	432-586-3461
Ambulance & Hospital	
Eddy County	575-616-7155
Lea County	575-397-9265
Carlsbad Medical Center	575-887-4100
Lea County Regional Medical Center	575-492-5000
Reeves County Hospital District	432-447-3551
Winkler County Memorial Hospital	432-586-5864
Helicopter/Lifeline Services	
Aero Care/Life Flight	575-616-7155 Eddy County or 575-397-9265 Lea County
OHSI	844-449-0911



District I

1625 N. French Dr., Hobbs, NM 88240
 Phone:(575) 393-6161 Fax:(575) 393-0720

District II

811 S. First St., Artesia, NM 88210
 Phone:(575) 748-1283 Fax:(575) 748-9720

District III

1000 Rio Brazos Rd., Aztec, NM 87410
 Phone:(505) 334-6178 Fax:(505) 334-6170

District IV

1220 S. St Francis Dr., Santa Fe, NM 87505
 Phone:(505) 476-3470 Fax:(505) 476-3462

State of New Mexico
Energy, Minerals and Natural Resources
Oil Conservation Division
1220 S. St Francis Dr.
Santa Fe, NM 87505

CONDITIONS

Action 98544

CONDITIONS

Operator: DEVON ENERGY PRODUCTION COMPANY, LP 333 West Sheridan Ave. Oklahoma City, OK 73102	OGRID: 6137
	Action Number: 98544
	Action Type: [C-101] BLM - Federal/Indian Land Lease (Form 3160-3)

CONDITIONS

Created By	Condition	Condition Date
pkautz	Will require a File As Drilled C-102 and a Directional Survey with the C-104	4/22/2022
pkautz	Once the well is spud, to prevent ground water contamination through whole or partial conduits from the surface, the operator shall drill without interruption through the fresh water zone or zones and shall immediately set in cement the water protection string	4/22/2022
pkautz	Oil base muds are not to be used until fresh water zones are cased and cemented providing isolation from the oil or diesel. This includes synthetic oils. Oil based mud, drilling fluids and solids must be contained in a steel closed loop system	4/22/2022
pkautz	Cement is required to circulate on both surface and intermediate1 strings of casing	4/22/2022