

Submit Copy To Appropriate District
Office
District I - (575) 393-6161
1625 N. French Dr., Hobbs, NM 88240
District II - (575) 748-1283
811 S. First St., Artesia, NM 88210
District III - (505) 334-6178
1000 Rio Brazos Rd., Aztec, NM 87410
District IV - (505) 476-3460
1220 S. St. Francis Dr., Santa Fe, NM
87505

State of New Mexico
Energy, Minerals and Natural Resources

Form C-103
Revised July 18, 2013

OIL CONSERVATION DIVISION
1220 South St. Francis Dr.
Santa Fe, NM 87505

WELL API NO. 30-025-02947
5. Indicate Type of Lease STATE <input checked="" type="checkbox"/> FEE <input type="checkbox"/>
6. State Oil & Gas Lease No.
7. Lease Name or Unit Agreement Name CENTRAL VACUUM UNIT
8. Well Number 011
9. OGRID Number 330132
10. Pool name or Wildcat VACUUM; GRAYBURG-SAN ANDRES

SUNDRY NOTICES AND REPORTS ON WELLS (DO NOT USE THIS FORM FOR PROPOSALS TO DRILL OR TO DEEPEN OR PLUG BACK TO A DIFFERENT RESERVOIR. USE "APPLICATION FOR PERMIT" (FORM C-101) FOR SUCH PROPOSALS.)	
1. Type of Well: Oil Well <input checked="" type="checkbox"/> Gas Well <input type="checkbox"/> Other <input type="checkbox"/>	
2. Name of Operator MORNINGSTAR OPERATING LLC	
3. Address of Operator 400 W 7TH ST, FORT WORTH, TX 76102	
4. Well Location Unit Letter <u>E</u> : <u>1980</u> feet from the <u>N</u> line and <u>621</u> feet from the <u>W</u> line Section <u>30</u> Township <u>17S</u> Range <u>35E</u> NMPM County <u>LEA</u>	
11. Elevation (Show whether DR, RKB, RT, GR, etc.) 4002 GL	

12. Check Appropriate Box to Indicate Nature of Notice, Report or Other Data

NOTICE OF INTENTION TO:		SUBSEQUENT REPORT OF:	
PERFORM REMEDIAL WORK <input type="checkbox"/>	PLUG AND ABANDON <input type="checkbox"/>	REMEDIAL WORK <input type="checkbox"/>	ALTERING CASING <input type="checkbox"/>
TEMPORARILY ABANDON <input type="checkbox"/>	CHANGE PLANS <input type="checkbox"/>	COMMENCE DRILLING OPNS. <input type="checkbox"/>	P AND A <input type="checkbox"/>
PULL OR ALTER CASING <input type="checkbox"/>	MULTIPLE COMPL <input type="checkbox"/>	CASING/CEMENT JOB <input type="checkbox"/>	
DOWNHOLE COMMINGLE <input type="checkbox"/>			
CLOSED-LOOP SYSTEM <input type="checkbox"/>			
OTHER: TA STATUS EXTENSION <input checked="" type="checkbox"/>		OTHER: <input type="checkbox"/>	

13. Describe proposed or completed operations. (Clearly state all pertinent details, and give pertinent dates, including estimated date of starting any proposed work). SEE RULE 19.15.7.14 NMAC. For Multiple Completions: Attach wellbore diagram of proposed completion or recompletion.

MORNINGSTAR OPERATING LLC REQUESTS APPROVAL TO RUN A MECHANICAL INTEGRITY TEST TO SUBMIT FOR TA STATUS EXTENSION.
ATTACHED IS A CURRENT WBD.

**Condition of Approval: notify
OCD Hobbs office 24 hours
prior of running MIT Test & Chart**

Spud Date:

04/02/1939

Rig Release Date:

I hereby certify that the information above is true and complete to the best of my knowledge and belief.

SIGNATURE Connie Blaylock TITLE REGULATORY ANALYST DATE 04/20/2022

Type or print name CONNIE BLAYLOCK E-mail address: cblaylock@mspartners.com PHONE: 817-334-7882

For State Use Only

APPROVED BY: Kerry Fortner TITLE Compliance Officer A DATE 4/26/22

Conditions of Approval (if any): 575-263-6633

Wellbore Diagram

CVU 11

Lease: Central Vacuum Unit
 Well: 11
 Field: Central Vacuum Unit
 County: Lea St.: NM
 Chevro: FA4101
 API: 30-025-02947
 Status: TA'd Oil Producer

Surf: 1980' FNL, 660' FWL
 Unit Ltr.: E Section: 30
 TSHP/Rng: S-17 E-35
 Directions: Buckeye, NM

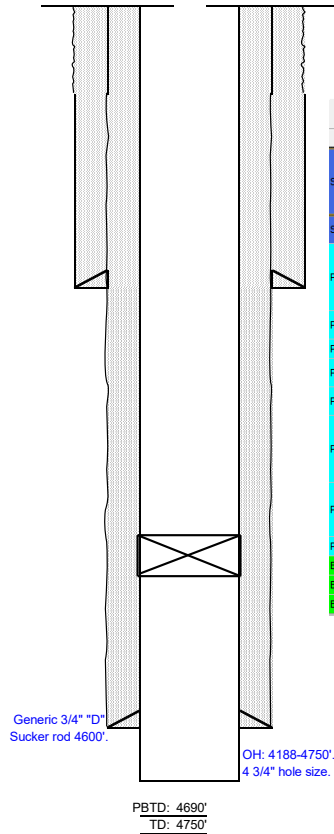
Surface Casing

Size: 7 5/8
 Wt., Grd.: 26.40# J-55
 Depth: 1613'
 Sxs Cmt: 450
 Circulate: yes
 TOC: surface
 Hole Size: 9 5/8

Production Casing

Size: 5 1/2
 Wt., Grd.: 17# J-55
 Depth: 4188'
 Sxs Cmt: 200
 Circulate: yes
 TOC: surface
 Hole Size: 7 7/8

Original OH:
 4188-4750'.



KB:
 DF:
 GL: 3992'
 Ini. Spud: 5/10/1939
 Ini. Comp.: 5/21/1939

Component Grouping	Part Type	Name of Component	Quantity	Length	Top Depth	Bottom Depth	Connection Top	Connection Bottom
Surface Casing	Casing/Casing Liner OD 7.625	J-55 7.625 OD/ 26.40# Round Short 6.969 ID 6.844 Drift	1	1613.00	0.00	1613.00	7.6250 Nom Threaded & Coupled Round Short NUE	7.6250 Nom Threaded & Coupled Round Short NUE
Surface Casing	Cement (behind Casing)	Cement	1	1613.00	0.00	1613.00	N/A	N/A
Production Casing	Casing/Casing Liner OD 5.500	J-55 5.500 OD/ 17.00# Round Short 4.892 ID 4.767 Drift - N/A	1	4188.00	0.00	4188.00	5.5000 Nom Threaded & Coupled 8RD-Short NUE	5.5000 Nom Threaded & Coupled 8RD-Short NUE
Production Casing	Plug - Cement	Plug - Cement on Top of Bridge Plug - Bare	1	46.00	4050.00	4096.00	N/A	N/A
Production Casing	Bridge Plug	Bridge Plug	1	4.00	4096.00	4100.00	N/A	N/A
Production Casing	Bridge Plug	Bridge Plug Cast Iron 5.500 - Bare	1	4.00	4100.00	4104.00	N/A	N/A
Production Casing	Cement (behind Casing)	Cement	1	1888.00	2300.00	4188.00	N/A	N/A
Production Casing	Wellbore Completion Detail (Perforations, etc.)	Open Hole - Open	1	562.00	4188.00	4750.00	N/A	N/A
Production Casing	Wellbore Completion (Producing Interval)	Producing Interval (Completion) - Bare	1	562.00	4188.00	4750.00	N/A	N/A
Production Casing	Plug - Cement	Plug Back Total Depth	1	0.00	4690.00	4690.00	N/A	N/A
Borehole	Wellbore Hole	Wellbore Hole OD- 9.6250	1	1613.00	0.00	1613.00	N/A	N/A
Borehole	Wellbore Hole	Wellbore Hole OD- 6.7500 - N/A	1	2575.00	1613.00	4188.00	N/A	N/A
Borehole	Wellbore Hole	Wellbore Hole OD- 4.7500	1	562.00	4188.00	4750.00	N/A	N/A

CIBP set at 4100' w/ 50' cmt on top

Generic 3/4" "D"
 Sucker rod 4600'.

OH: 4188-4750'.
 4 3/4" hole size.

PBTD: 4690'
 TD: 4750'

Wellbore Diagram

CVU 11

Lease: Central Vacuum Unit
 Well: 11
 Field: Central Vacuum Unit
 County: Lea St.: NM
 Chevro: FA4101
 API: 30-025-02947
 Status: TA'd Oil Producer

Surf: 1980' FNL, 660' FWL
 Unit Ltr.: E Section: 30
 TSHP/Rng: S-17 E-35
 Directions: Buckeye, NM

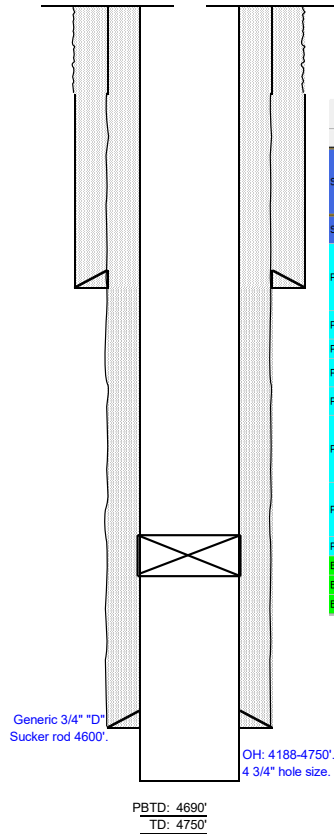
Surface Casing

Size: 7 5/8
 Wt., Grd.: 26.40# J-55
 Depth: 1613'
 Sxs Cmt: 450
 Circulate: yes
 TOC: surface
 Hole Size: 9 5/8

Production Casing

Size: 5 1/2
 Wt., Grd.: 17# J-55
 Depth: 4188'
 Sxs Cmt: 200
 Circulate: yes
 TOC: surface
 Hole Size: 7 7/8

Original OH:
 4188-4750'.



KB:
 DF:
 GL: 3992'
 Ini. Spud: 5/10/1939
 Ini. Comp.: 5/21/1939

Component Grouping	Part Type	Name of Component	Quantity	Length	Top Depth	Bottom Depth	Connection Top	Connection Bottom
Surface Casing	Casing/Casing Liner OD 7.625	J-55 7.625 OD/ 26.40# Round Short 6.969 ID 6.844 Drift	1	1613.00	0.00	1613.00	7.6250 Nom Threaded & Coupled Round Short NUE	7.6250 Nom Threaded & Coupled Round Short NUE
Surface Casing	Cement (behind Casing)	Cement	1	1613.00	0.00	1613.00	N/A	N/A
Production Casing	Casing/Casing Liner OD 5.500	J-55 5.500 OD/ 17.00# Round Short 4.892 ID 4.767 Drift - N/A	1	4188.00	0.00	4188.00	5.5000 Nom Threaded & Coupled 8RD-Short NUE	5.5000 Nom Threaded & Coupled 8RD-Short NUE
Production Casing	Plug - Cement	Plug - Cement on Top of Bridge Plug - Bare	1	46.00	4050.00	4096.00	N/A	N/A
Production Casing	Bridge Plug	Bridge Plug	1	4.00	4096.00	4100.00	N/A	N/A
Production Casing	Bridge Plug	Bridge Plug Cast Iron 5.500 - Bare	1	4.00	4100.00	4104.00	N/A	N/A
Production Casing	Cement (behind Casing)	Cement	1	1888.00	2300.00	4188.00	N/A	N/A
Production Casing	Wellbore Completion Detail (Perforations, etc.)	Open Hole - Open	1	562.00	4188.00	4750.00	N/A	N/A
Production Casing	Wellbore Completion (Producing Interval) - Bare	Producing Interval (Completion) - Bare	1	562.00	4188.00	4750.00	N/A	N/A
Production Casing	Plug - Cement	Plug Back Total Depth	1	0.00	4690.00	4690.00	N/A	N/A
Borehole	Wellbore Hole	Wellbore Hole OD- 9.6250	1	1613.00	0.00	1613.00	N/A	N/A
Borehole	Wellbore Hole	Wellbore Hole OD- 6.7500 - N/A	1	2575.00	1613.00	4188.00	N/A	N/A
Borehole	Wellbore Hole	Wellbore Hole OD- 4.7500	1	562.00	4188.00	4750.00	N/A	N/A

CIBP set at 4100' w/ 50' cmt on top

Generic 3/4" "D"
 Sucker rod 4600'.

OH: 4188-4750'.
 4 3/4" hole size.

PBTD: 4690'
 TD: 4750'

District I
1625 N. French Dr., Hobbs, NM 88240
Phone:(575) 393-6161 Fax:(575) 393-0720
District II
811 S. First St., Artesia, NM 88210
Phone:(575) 748-1283 Fax:(575) 748-9720
District III
1000 Rio Brazos Rd., Aztec, NM 87410
Phone:(505) 334-6178 Fax:(505) 334-6170
District IV
1220 S. St Francis Dr., Santa Fe, NM 87505
Phone:(505) 476-3470 Fax:(505) 476-3462

State of New Mexico
Energy, Minerals and Natural Resources
Oil Conservation Division
1220 S. St Francis Dr.
Santa Fe, NM 87505

CONDITIONS

Action 100290

CONDITIONS

Operator: MorningStar Operating LLC 400 W 7th St Fort Worth, TX 76102	OGRID: 330132
	Action Number: 100290
	Action Type: [C-103] NOI Temporary Abandonment (C-103I)

CONDITIONS

Created By	Condition	Condition Date
kfortner	Run TA status MIT test	4/26/2022