

Submit 1 Copy To Appropriate District Office  
 District I -- (575) 393-6161  
 1625 N. French Dr., Hobbs, NM 88240  
 District II -- (575) 748-1283  
 811 S. First St., Artesia, NM 88210  
 District III -- (505) 334-6178  
 1000 Rio Brazos Rd., Aztec, NM 87410  
 District IV -- (505) 476-3460  
 1220 S. St. Francis Dr., Santa Fe, NM 87505

State of New Mexico  
 Energy, Minerals and Natural Resources

OIL CONSERVATION DIVISION  
 1220 South St. Francis Dr.  
 Santa Fe, NM 87505

Form C-103  
 Revised July 18, 2013

SUNDRY NOTICES AND REPORTS ON WELLS (DO NOT USE THIS FORM FOR PROPOSALS TO DRILL OR TO DEEPEN OR PLUG BACK TO A DIFFERENT RESERVOIR. USE "APPLICATION FOR PERMIT" (FORM C-101) FOR SUCH PROPOSALS.)		WELL API NO. 30-025-07756
1. Type of Well: Oil Well <input checked="" type="checkbox"/> Gas Well <input type="checkbox"/> Other <input type="checkbox"/>		5. Indicate Type of Lease STATE <input type="checkbox"/> FEE <input checked="" type="checkbox"/>
2. Name of Operator JR Oil Ltd		6. State Oil & Gas Lease No. 330361
3. Address of Operator P.O. Box 2975 Hobbs, NM 88241		7. Lease Name or Unit Agreement Name Warren McKee Unit
4. Well Location Unit Letter O : 330 feet from the S line and 1,650 feet from the E line Section 07 Township 20S Range 38E NMPM County LEA		8. Well Number #501
11. Elevation (Show whether DR, RKB, RT, GR, etc.)		9. OGRID Number 256073
10. Pool name or Wildcat Warren; McKee		

12. Check Appropriate Box to Indicate Nature of Notice, Report or Other Data

NOTICE OF INTENTION TO:

PERFORM REMEDIAL WORK ☒ PLUG AND ABANDON ☐  
 TEMPORARILY ABANDON ☐ CHANGE PLANS ☐  
 PULL OR ALTER CASING ☐ MULTIPLE COMPL ☐  
 DOWNHOLE COMMINGLE ☐  
 CLOSED-LOOP SYSTEM ☐  
 OTHER: ☐

SUBSEQUENT REPORT OF:

REMEDIAL WORK ☐ ALTERING CASING ☐  
 COMMENCE DRILLING OPNS. ☐ P AND A ☐  
 CASING/CEMENT JOB ☐  
 OTHER: ☐

13. Describe proposed or completed operations. (Clearly state all pertinent details, and give pertinent dates, including estimated date of starting any proposed work). SEE RULE 19.15.7.14 NMAC. For Multiple Completions: Attach wellbore diagram of proposed completion or recompletion.

JR Oil suspects a casing leak exists in this well bore and requests permission to test casing, isolate leak(s), squeeze cement, drill out, test squeeze to 500 psi for 30 minutes, and return to production.

Spud Date:

Rig Release Date:

I hereby certify that the information above is true and complete to the best of my knowledge and belief.

SIGNATURE

*[Signature]*

TITLE

ENGINEER

DATE

6/16/21

Type or print name

IAN PETERSEN

E-mail address:

IAN@DDPETRO.COM

PHONE:

(432) 634-4922

For State Use Only

APPROVED BY:

*[Signature: Kerry Fortner]*

TITLE

Compliance Officer A

DATE

5/11/22

Conditions of Approval (if any)

575-263-6633

# J R Oil, Ltd.

## Warren McKee Unit #501

### Casing Repair Procedure

06/11/2021

#### **Pull production equipment**

1. MIRU service unit, kill truck, pipe racks, and stripping (2x4's for layering tubing).
2. POOH rods and pump, hang pump in derrick or lay down and keep clean from dirt.
3. ND WH, release TAC, NU BOP, lay down production tubing (no tally needed).
4. Move production tubing to edge of location, rack & tally 9,200' of 2-7/8" N-80 or better work string.

#### **Test casing and isolate leak**

5. Trip 4-3/4" bit & 5-1/2" scraper to ~9,047'.
6. RIH 5-1/2" RBP & test packer dressed for 17# to ~9,047', set RBP, PUH, set packer and test RBP to 500 psi.
7. Move packer to ~6,509' and test casing above and below to 500 psi. Isolate casing leak(s) to within 1 jt.
8. After a leak has been isolated establish a low and a high injection rate, i.e. 0.5 and 2.0 BPM. Open 8-5/8" casing valve and report if communication exists or not. Report rates and pressures for cement design.

#### **Cement squeeze**

9. MIRU 75-100 bbl open top tank for cement wash up. Drop 1-2 sacks of sand on RBP, and set 5-1/2" CICR dressed for 17# on tubing 1-2 joints above top of leak.
10. Test casing above retainer to 500 psi, (test tubing to 500 psi if possible), and verify injection under retainer. Release kill truck and MIRU reverse unit.

11. MIRU 2 transports of fresh water (NO KCL) and cement service (preferably first thing in the morning), discuss cement design (TBD in step 8) and max pressure. Dump sugar in wash up pit per cement service's recommendation.
12. Establish rate on water, and squeeze cement. After successful squeeze, bleed pressure to 500 psi, sting out, reverse clean, and POOH tubing.
13. RIH 4-3/4" bit & drill collars. Allow cement to cure 24 hours.
14. Drill out retainer and cement.
  - a. Check returns for soft/green cement. If cement not cured report and shut down for another 24 hours.  
Circulate clean, close pipe rams, test sqz to 500 psi for 15 minutes, and report results.
  - b. If sqz doesn't hold pressure call engineer to discuss plan.

#### **Return to production**

15. Lay down bit & drill collars, POOH RBP.
16. Lay down work string and RIH production string same as before. ND BOP, set TAC, NU WH.
17. Notify foreman & pumper of handover, load pump w/ diesel and RIH pump and rods same as before, space out, L&T, long stroke, hang well on, and hand over to production.
18. Clean location and RDMO.

# Information Page

## Well

Name: Warren McKee Unit #501

API: 30-025-07756

Location: Unit O, section 7, T 20S, R 38E, 330' FSL, 1,650' FEL

Lat/long: 32.5813103, -103.184639

Directions: From Eunice Hwy, turn on to Billy Walker Road. Drive 2.9 miles West to locked gate on south side of road. Enter with code 2002 or 0352 and re-lock gate. Continue south 0.7 miles, turn West (right) and drive 0.3 miles to well.

## Contacts

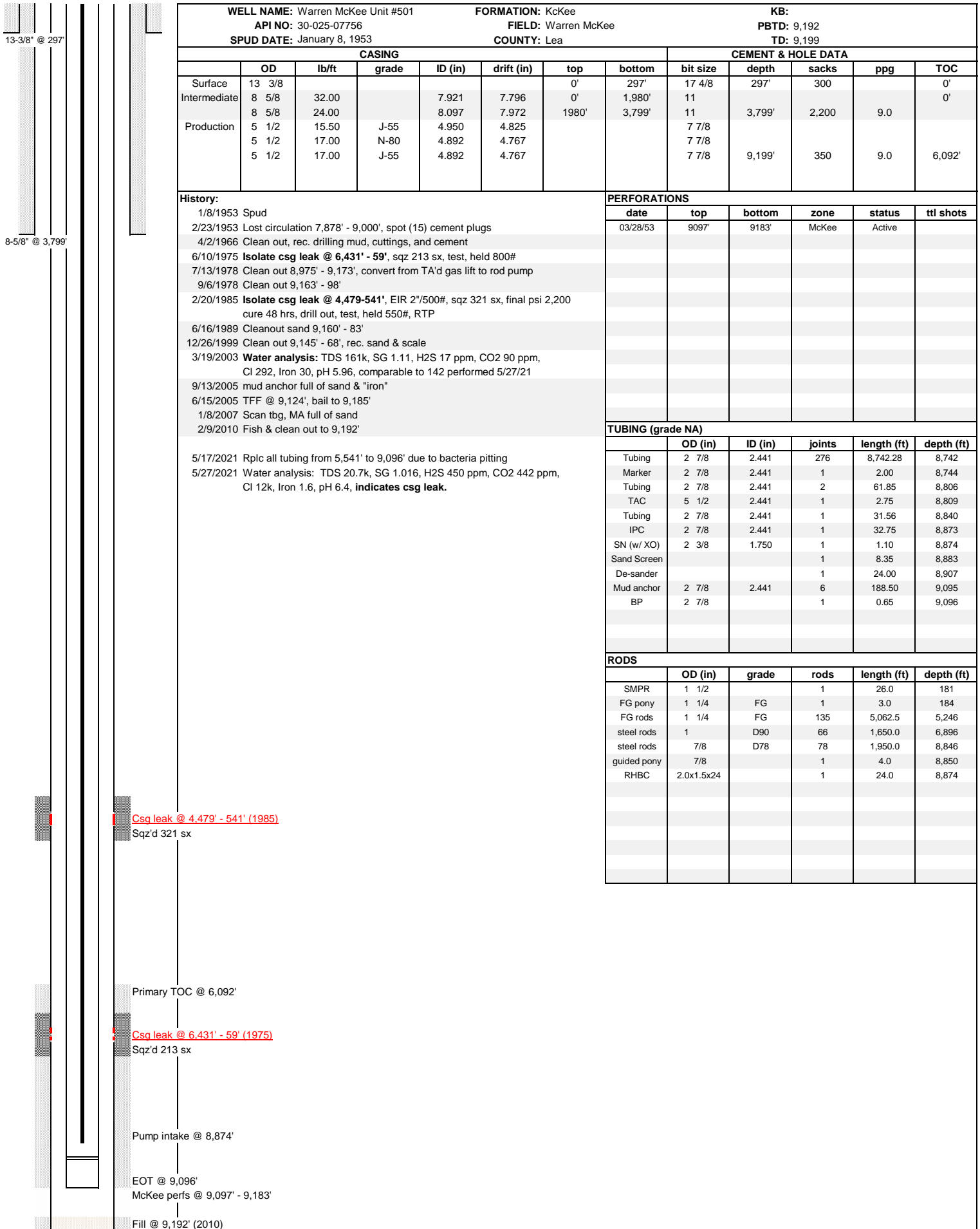
Engineer: Ian Petersen (432) 634-4922

Production Foreman: Josh Latimer (575) 414-9188

Pumper: Isaiah Urias (806) 841-0848

## JR Oil Ltd.

## Warren McKee Unit #501



5-1/2" @ 9,199'  
TD @ 9,200'

Updated: June 11, 2021 by Ian Petersen

# **J R Oil, Ltd.**

## **Warren McKee Unit #501**

### **Casing Repair Procedure**

06/11/2021

#### **Pull production equipment**

1. MIRU service unit, kill truck, pipe racks, and stripping (2x4's for layering tubing).
2. POOH rods and pump, hang pump in derrick or lay down and keep clean from dirt.
3. ND WH, release TAC, NU BOP, lay down production tubing (no tally needed).
4. Move production tubing to edge of location, rack & tally 9,200' of 2-7/8" N-80 or better work string.

#### **Test casing and isolate leak**

5. Trip 4-3/4" bit & 5-1/2" scraper to ~9,047'.
6. RIH 5-1/2" RBP & test packer dressed for 17# to ~9,047', set RBP, PUH, set packer and test RBP to 500 psi.
7. Move packer to ~6,509' and test casing above and below to 500 psi. Isolate casing leak(s) to within 1 jt.
8. After a leak has been isolated establish a low and a high injection rate, i.e. 0.5 and 2.0 BPM. Open 8-5/8" casing valve and report if communication exists or not. Report rates and pressures for cement design.

#### **Cement squeeze**

9. MIRU 75-100 bbl open top tank for cement wash up. Drop 1-2 sacks of sand on RBP, and set 5-1/2" CICR dressed for 17# on tubing 1-2 joints above top of leak.
10. Test casing above retainer to 500 psi, (test tubing to 500 psi if possible), and verify injection under retainer. Release kill truck and MIRU reverse unit.

11. MIRU 2 transports of fresh water (NO KCL) and cement service (preferably first thing in the morning), discuss cement design (TBD in step 8) and max pressure. Dump sugar in wash up pit per cement service's recommendation.
12. Establish rate on water, and squeeze cement. After successful squeeze, bleed pressure to 500 psi, sting out, reverse clean, and POOH tubing.
13. RIH 4-3/4" bit & drill collars. Allow cement to cure 24 hours.
14. Drill out retainer and cement.
  - a. Check returns for soft/green cement. If cement not cured report and shut down for another 24 hours.  
Circulate clean, close pipe rams, test sqz to 500 psi for 15 minutes, and report results.
  - b. If sqz doesn't hold pressure call engineer to discuss plan.

#### **Return to production**

15. Lay down bit & drill collars, POOH RBP.
16. Lay down work string and RIH production string same as before. ND BOP, set TAC, NU WH.
17. Notify foreman & pumper of handover, load pump w/ diesel and RIH pump and rods same as before, space out, L&T, long stroke, hang well on, and hand over to production.
18. Clean location and RDMO.



# Information Page

## Well

Name: Warren McKee Unit #501

API: 30-025-07756

Location: Unit O, section 7, T 20S, R 38E, 330' FSL, 1,650' FEL

Lat/long: 32.5813103, -103.184639

Directions: From Eunice Hwy, turn on to Billy Walker Road. Drive 2.9 miles West to locked gate on south side of road. Enter with code 2002 or 0352 and re-lock gate. Continue south 0.7 miles, turn West (right) and drive 0.3 miles to well.

## Contacts

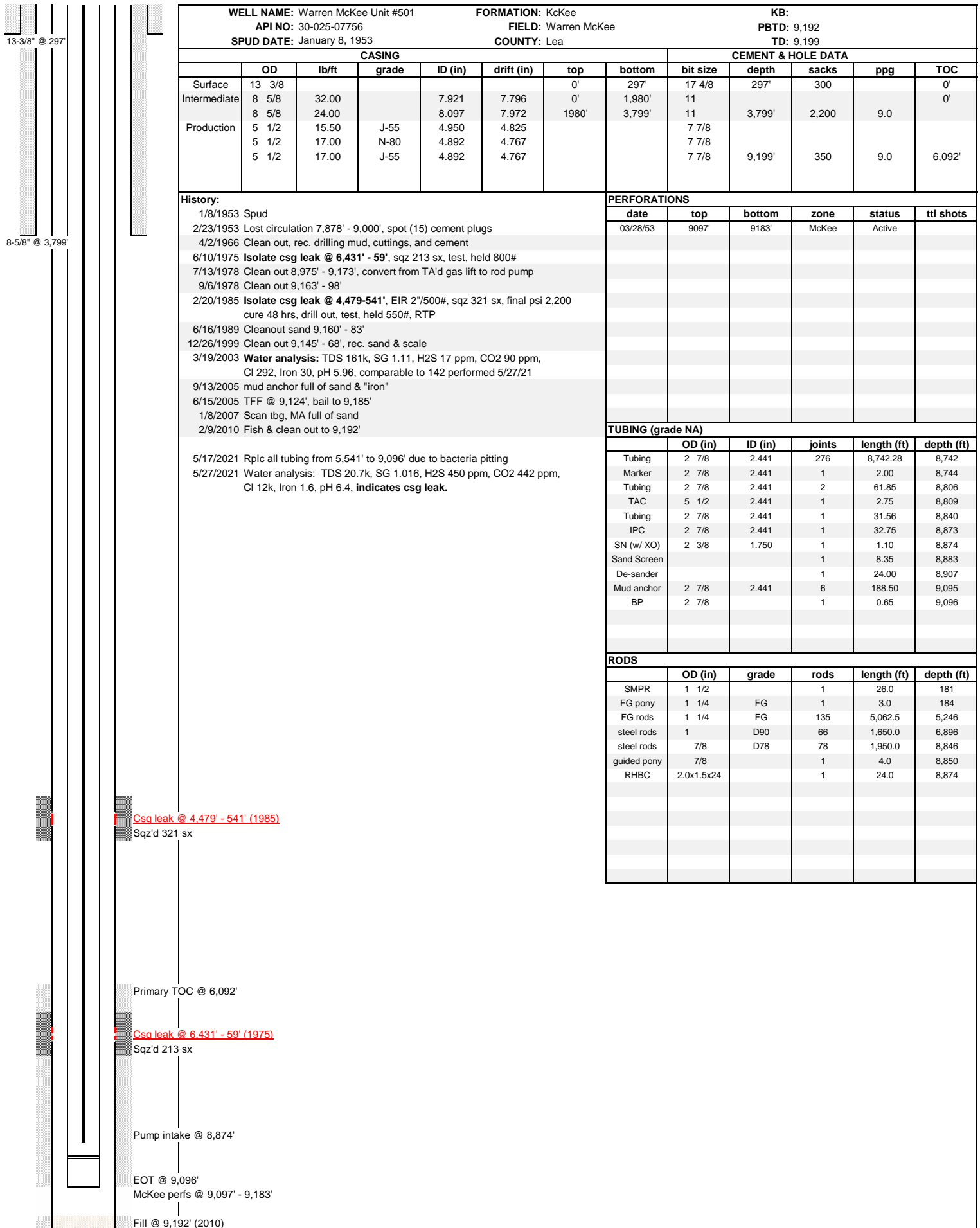
Engineer: Ian Petersen (432) 634-4922

Production Foreman: Josh Latimer (575) 414-9188

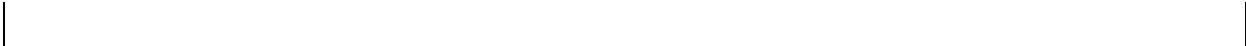
Pumper: Isaiah Urias (806) 841-0848

## JR Oil Ltd.

## Warren McKee Unit #501



5-1/2" @ 9,199'  
TD @ 9,200'



Updated: June 11, 2021 by Ian Petersen

**District I**  
1625 N. French Dr., Hobbs, NM 88240  
Phone:(575) 393-6161 Fax:(575) 393-0720  
**District II**  
811 S. First St., Artesia, NM 88210  
Phone:(575) 748-1283 Fax:(575) 748-9720  
**District III**  
1000 Rio Brazos Rd., Aztec, NM 87410  
Phone:(505) 334-6178 Fax:(505) 334-6170  
**District IV**  
1220 S. St Francis Dr., Santa Fe, NM 87505  
Phone:(505) 476-3470 Fax:(505) 476-3462

State of New Mexico  
Energy, Minerals and Natural Resources  
Oil Conservation Division  
1220 S. St Francis Dr.  
Santa Fe, NM 87505

CONDITIONS  
  
Action 32445

CONDITIONS

Operator: J R OIL, LTD. CO. P.O. Box 52647 Tulsa, OK 74152	OGRID: 256073
	Action Number: 32445
	Action Type: [C-103] Sub. Workover (C-103R)

CONDITIONS

Created By	Condition	Condition Date
kfortner	None	5/11/2022