

Submit a Copy To Appropriate District
Office
District I – (575) 393-6161
1625 N. French Dr., Hobbs, NM 88240
District II – (575) 748-1283
811 S. First St., Artesia, NM 88210
District III – (505) 334-6178
1000 Rio Brazos Rd., Aztec, NM 87410
District IV – (505) 476-3460
1220 S. St. Francis Dr., Santa Fe, NM
87505

State of New Mexico
Energy, Minerals and Natural Resources

Form C-103
Revised July 18, 2013

OIL CONSERVATION DIVISION
1220 South St. Francis Dr.
Santa Fe, NM 87505

| |
|---|
| WELL API NO. 30-025-25804 |
| 5. Indicate Type of Lease STATE <input type="checkbox"/> FEE <input checked="" type="checkbox"/> |
| 6. State Oil & Gas Lease No. |
| 7. Lease Name or Unit Agreement Name Scharb Com |
| 8. Well Number 1 |
| 9. OGRID Number 18971 |
| 10. Pool name or Wildcat 50450 Quail; Queen; 55610 Scharb; BS |

| | |
|---|--|
| SUNDRY NOTICES AND REPORTS ON WELLS (DO NOT USE THIS FORM FOR PROPOSALS TO DRILL OR TO DEEPEN OR PLUG BACK TO A DIFFERENT RESERVOIR. USE "APPLICATION FOR PERMIT" (FORM C-101) FOR SUCH PROPOSALS.) | |
| 1. Type of Well: Oil Well <input checked="" type="checkbox"/> Gas Well <input type="checkbox"/> Other <input type="checkbox"/> | |
| 2. Name of Operator Read & Stevens, Inc. | |
| 3. Address of Operator PO Box 1518, Roswell, NM 88202 | |
| 4. Well Location Unit Letter J ; 1980 feet from the South line and 1980 feet from the East line Section 7 Township 19S Range 35E NMPM County Lea | |
| 11. Elevation (Show whether DR, RKB, RT, GR, etc.) 3866' GR | |

12. Check Appropriate Box to Indicate Nature of Notice, Report or Other Data

| NOTICE OF INTENTION TO: | | SUBSEQUENT REPORT OF: | |
|--|---|--|--|
| PERFORM REMEDIAL WORK <input type="checkbox"/> | PLUG AND ABANDON <input type="checkbox"/> | REMEDIAL WORK <input type="checkbox"/> | ALTERING CASING <input type="checkbox"/> |
| TEMPORARILY ABANDON <input type="checkbox"/> | CHANGE PLANS <input type="checkbox"/> | COMMENCE DRILLING OPNS. <input type="checkbox"/> | P AND A <input checked="" type="checkbox"/> |
| PULL OR ALTER CASING <input type="checkbox"/> | MULTIPLE COMPL <input type="checkbox"/> | CASING/CEMENT JOB <input type="checkbox"/> | PNR <input type="checkbox"/> |
| DOWNHOLE COMMINGLE <input type="checkbox"/> | | | |
| CLOSED-LOOP SYSTEM <input type="checkbox"/> | | | |
| OTHER: <input type="checkbox"/> | | OTHER: <input type="checkbox"/> | |

13. Describe proposed or completed operations. (Clearly state all pertinent details, and give pertinent dates, including estimated date of starting any proposed work). SEE RULE 19.15.7.14 NMAC. For Multiple Completions: Attach wellbore diagram of proposed completion or recompletion.

Please see attached plugging report and pictures of standard dry hole marker.

Spud Date:

01/20/1978

Rig Release Date:

I hereby certify that the information above is true and complete to the best of my knowledge and belief.

SIGNATURE Kelly Barajas TITLE Production Reporting DATE 4/27/2022

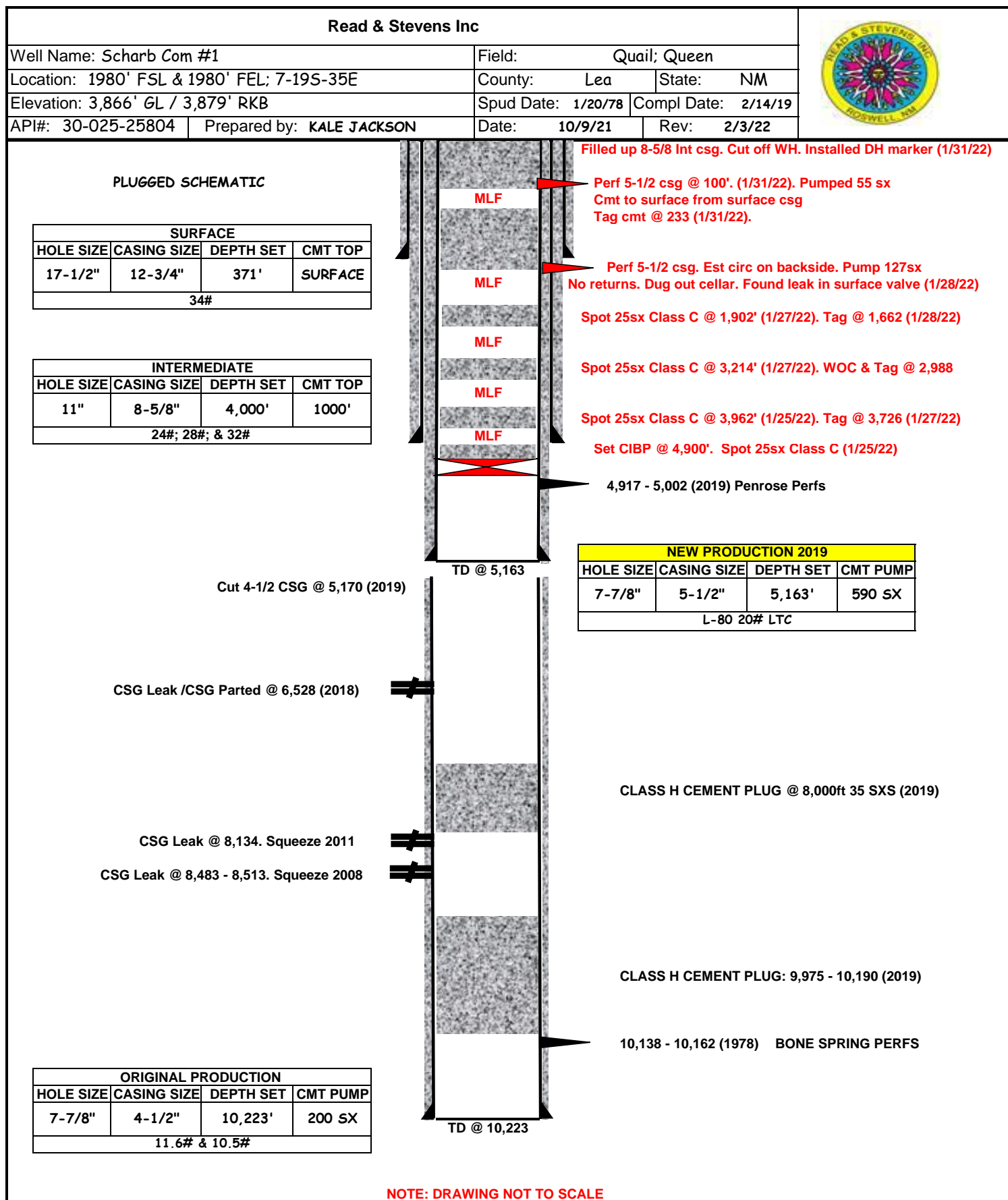
Type or print name Kelly Barajas E-mail address: kbarajas@read-stevens.com PHONE: 575-624-3760

For State Use Only

APPROVED BY: Kerry Fortner TITLE Compliance Officer A DATE 5/12/22
Conditions of Approval (if any):



Scharb



**Plugging Report
Scharb Com #1
API 30-025-25804**

1/24/2022 Move in rig up and move in plugging equipment. Dug out cellar to the intermediate head and plumb to the steel pit. Installed BOP and pulled OOH with 2 3/8" tubing. 135 joints to S/N with 1 mud joint.

1/25/2022 Set 5 1/2" CIBP with wireline. RIH with tubing and tagged CIBP at 4900'. Circulated MLF and tested casing. Casing good to 500#. Spot 25 sx Class C cement on top of CIBP. POOH to 3962' and spot 25 sx cement. POOH and SION

1/27/2022 Tagged cement at 3726'. POOH to 3214' and spot 25 sx cement with CaCl. WOC and tagged cement at 2988'. POOH to 1902' and spot 25 sx cement. POOH and SION.

1/28/2022 Tagged cement at 1662'. Perforated 5 1/2" casing at 421'. Established rate and laid down remaining tubing. Pumped cement down the 5 1/2" casing to the perforations at 421'. Intended to circulate the cement to surface in/out of the 5 1/2" casing. Pumped 127 sx with no cement to surface. Fluid started coming up around the wellhead in the cellar. Displace cement in the 5 1/2" casing with 3 bbls water and shut in. Dug out cellar and found a bad connection on the surface head. Replace the connection and plumbed surface head to the pit. Shut down to wait on cement.

1/31/2022 Loaded the 5 1/2" casing and tested to 1000#. Tagged cement at 223'. Perforated casing at 100'. Established rate into perforations. Good communication with the surface head, but no communication with the intermediate head. Circulated cement down the 5 1/2" casing and up the surface annulus with 55 sx cement. Rigged down and cut off wellhead. Good cement in the 5 1/2" and 12 3/4" casing strings. Filled the 8 5/8" casing up with less than 1 sack of cement. Installed standard above ground marker, removed the anchors and back drug location.

**Plugging Report
Scharb Com #1
API 30-025-25804**

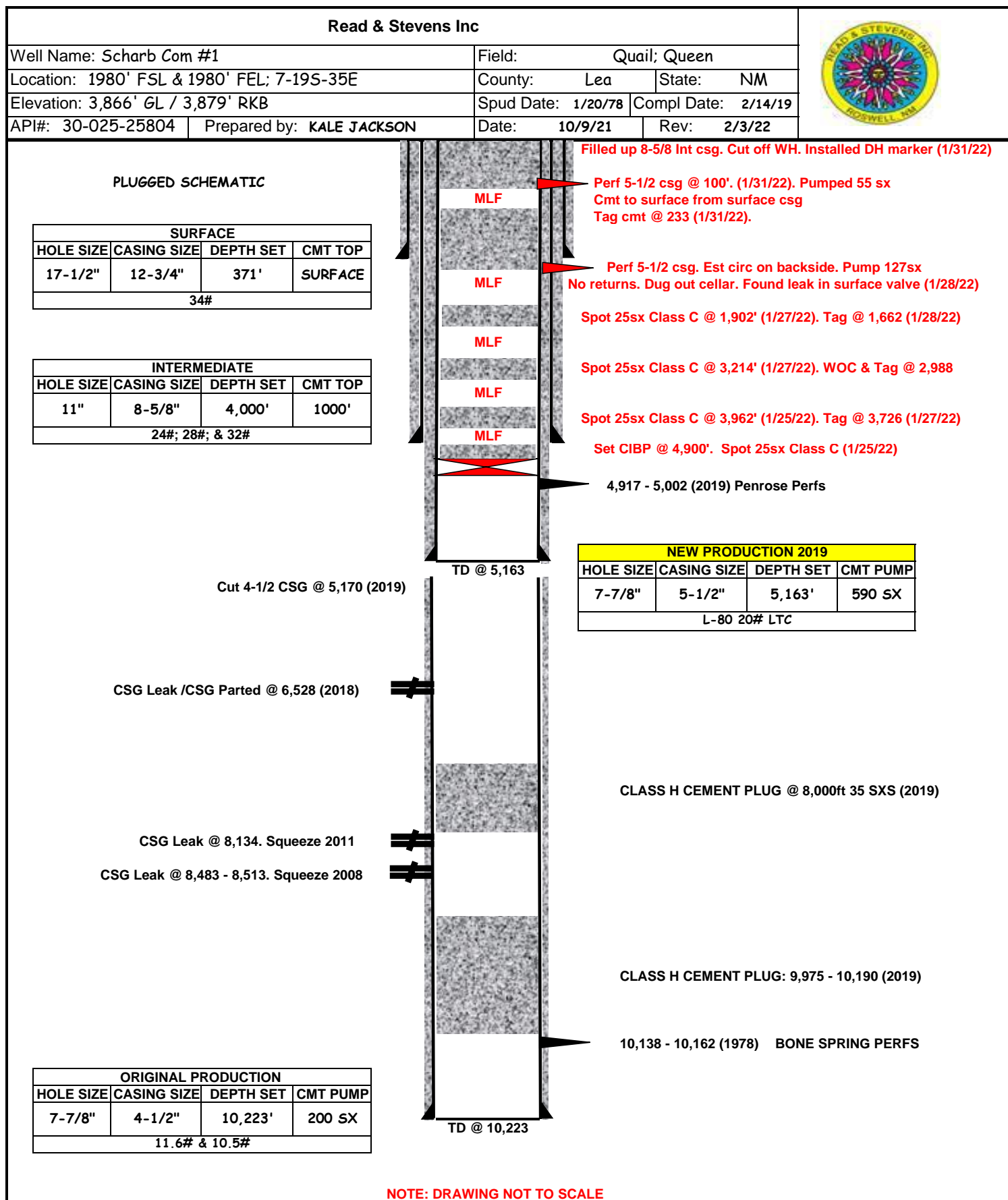
1/24/2022 Move in rig up and move in plugging equipment. Dug out cellar to the intermediate head and plumb to the steel pit. Installed BOP and pulled OOH with 2 3/8" tubing. 135 joints to S/N with 1 mud joint.

1/25/2022 Set 5 1/2" CIBP with wireline. RIH with tubing and tagged CIBP at 4900'. Circulated MLF and tested casing. Casing good to 500#. Spot 25 sx Class C cement on top of CIBP. POOH to 3962' and spot 25 sx cement. POOH and SION

1/27/2022 Tagged cement at 3726'. POOH to 3214' and spot 25 sx cement with CaCl. WOC and tagged cement at 2988'. POOH to 1902' and spot 25 sx cement. POOH and SION.

1/28/2022 Tagged cement at 1662'. Perforated 5 1/2" casing at 421'. Established rate and laid down remaining tubing. Pumped cement down the 5 1/2" casing to the perforations at 421'. Intended to circulate the cement to surface in/out of the 5 1/2" casing. Pumped 127 sx with no cement to surface. Fluid started coming up around the wellhead in the cellar. Displace cement in the 5 1/2" casing with 3 bbls water and shut in. Dug out cellar and found a bad connection on the surface head. Replace the connection and plumbed surface head to the pit. Shut down to wait on cement.

1/31/2022 Loaded the 5 1/2" casing and tested to 1000#. Tagged cement at 223'. Perforated casing at 100'. Established rate into perforations. Good communication with the surface head, but no communication with the intermediate head. Circulated cement down the 5 1/2" casing and up the surface annulus with 55 sx cement. Rigged down and cut off wellhead. Good cement in the 5 1/2" and 12 3/4" casing strings. Filled the 8 5/8" casing up with less than 1 sack of cement. Installed standard above ground marker, removed the anchors and back drug location.



District I
1625 N. French Dr., Hobbs, NM 88240
Phone:(575) 393-6161 Fax:(575) 393-0720
District II
811 S. First St., Artesia, NM 88210
Phone:(575) 748-1283 Fax:(575) 748-9720
District III
1000 Rio Brazos Rd., Aztec, NM 87410
Phone:(505) 334-6178 Fax:(505) 334-6170
District IV
1220 S. St Francis Dr., Santa Fe, NM 87505
Phone:(505) 476-3470 Fax:(505) 476-3462

State of New Mexico
Energy, Minerals and Natural Resources
Oil Conservation Division
1220 S. St Francis Dr.
Santa Fe, NM 87505

COMMENTS

Action 101962

COMMENTS

| | |
|---|--|
| Operator: READ & STEVENS INC P.O. Box 1518 Roswell, NM 88202 | OGRID: 18917 |
| | Action Number: 101962 |
| | Action Type: [C-103] Sub. Plugging (C-103P) |

COMMENTS

| Created By | Comment | Comment Date |
|------------|---------------|--------------|
| plmartinez | DATA ENTRY PM | 5/12/2022 |

District I
1625 N. French Dr., Hobbs, NM 88240
Phone:(575) 393-6161 Fax:(575) 393-0720
District II
811 S. First St., Artesia, NM 88210
Phone:(575) 748-1283 Fax:(575) 748-9720
District III
1000 Rio Brazos Rd., Aztec, NM 87410
Phone:(505) 334-6178 Fax:(505) 334-6170
District IV
1220 S. St Francis Dr., Santa Fe, NM 87505
Phone:(505) 476-3470 Fax:(505) 476-3462

State of New Mexico
Energy, Minerals and Natural Resources
Oil Conservation Division
1220 S. St Francis Dr.
Santa Fe, NM 87505

CONDITIONS

Action 101962

CONDITIONS

| | |
|---|--|
| Operator: READ & STEVENS INC P.O. Box 1518 Roswell, NM 88202 | OGRID: 18917 |
| | Action Number: 101962 |
| | Action Type: [C-103] Sub. Plugging (C-103P) |

CONDITIONS

| Created By | Condition | Condition Date |
|------------|---------------------------------------|----------------|
| kfortner | Need C103Q and marker pics to release | 5/12/2022 |