

Submit a Copy To Appropriate District
Office
District I - (575) 393-6161
1625 N. French Dr., Hobbs, NM 88240
District II - (575) 748-1283
811 S. First St., Artesia, NM 88210
District III - (505) 334-6178
1000 Rio Brazos Rd., Aztec, NM 87410
District IV - (505) 476-3460
1220 S. St. Francis Dr., Santa Fe, NM
87505

State of New Mexico
Energy, Minerals and Natural Resources

Form C-103
Revised July 18, 2013

OIL CONSERVATION DIVISION
1220 South St. Francis Dr.
Santa Fe, NM 87505

| | |
|--|----|
| WELL API NO. 30-025-31456 | |
| 5. Indicate Type of Lease STATE <input checked="" type="checkbox"/> FEE <input type="checkbox"/> | |
| 6. State Oil & Gas Lease No. | |
| 7. Lease Name or Unit Agreement Name West Lovington Unit | |
| 8. Well Number | 91 |
| 9. OGRID Number 241333 | |
| 10. Pool name or Wildcat [40990] Lovington; Upper San Andres, West | |
| 4. Well Location Unit Letter <u>D</u> : <u>1305</u> feet from the <u>NORTH</u> line and <u>15</u> feet from the <u>WEST</u> line Section <u>08</u> Township <u>17S</u> Range <u>36E</u> NMPM County <u>LEA</u> | |
| 11. Elevation (Show whether DR, RKB, RT, GR, etc.) 3901 GR | |

12. Check Appropriate Box to Indicate Nature of Notice, Report or Other Data

NOTICE OF INTENTION TO:

PERFORM REMEDIAL WORK ☐ PLUG AND ABANDON ☐
TEMPORARILY ABANDON ☐ CHANGE PLANS ☐
PULL OR ALTER CASING ☐ MULTIPLE COMPL ☐
DOWNHOLE COMMINGLE ☐
CLOSED-LOOP SYSTEM ☐
OTHER: ☐

SUBSEQUENT REPORT OF:

REMEDIAL WORK ☐ ALTERING CASING ☐
COMMENCE DRILLING OPNS. ☐ P AND A ☒
CASING/CEMENT JOB ☐ PNR
OTHER: ☐

13. Describe proposed or completed operations. (Clearly state all pertinent details, and give pertinent dates, including estimated date of starting any proposed work). SEE RULE 19.15.7.14 NMAC. For Multiple Completions: Attach wellbore diagram of proposed completion or recompletion.

3/10/22 MIRU P&A Equipment

3/11/22 POOH with rods & tubing

3/14/22 Set 5-1/2" CIBP at 4697'. Circulate 110 bbls MLF. Test casing to 1000 psi - good.
Spot 100 sacks Class C cement from 4697' to 3697'. Spot 25 sacks Class C cement from 3072' to 2822'.

3/15/22 Perforate at 2093'. Pressure up to 1000 psi. Spot 50 sacks Class C cement from 2143' to 1649'. Perforate at 200'. Squeeze 200 sacks Class C cement from 200' to surface.
Rig down move off location. P&A complete.

Spud Date:

Rig Release Date:

I hereby certify that the information above is true and complete to the best of my knowledge and belief.

SIGNATURE Hayes Thibodeaux TITLE Engineer DATE 3/17/2022

Type or print name Hayes Thibodeaux E-mail address: Hayes.Thibodeaux@chevron.com PHONE: 281-726-9683

For State Use Only

APPROVED BY: Kerry Fortner TITLE Compliance Officer A DATE 5/11/22

Conditions of Approval (if any):



EMC Ops Summary - External

| | | | |
|--------------------------------------|-------------------------|--------------------------------------|---------------------------|
| Well Name WEST LOVINGTON UNIT 091 | Field Name Lovington | Lease West Lovington Unit | Area Central Permian |
| Business Unit EMC | County/ Parish Lea | Global Metrics Region EMC US East | Surface UWI 3002531456 |

| | | | |
|--|---|-----------------------------------|------------------------------------|
| Basic Well Data | | | |
| Current RKB Elevation 3,917.00, 3/17/2022 | Original RKB Elevation (ft) 3,917.00 | Latitude (°) 32° 51' 10.332" N | Longitude (°) 103° 23' 5.352" W |

| Phases | | | | | |
|-------------------|-----------------|---------|---------|-------------------|--------------------------|
| Actual Start Date | Actual End Date | Phase 1 | Phase 2 | Time Log Hrs (hr) | Percent Problem Time (%) |
| 1/26/2022 07:00 | 1/26/2022 12:00 | PREP | FAC | 5.00 | |
| 3/10/2022 12:00 | 3/10/2022 12:15 | MOB | MOVEON | 0.25 | |
| 3/10/2022 12:15 | 3/14/2022 15:30 | ABAN | TBGPULL | 22.75 | |
| 3/14/2022 15:30 | 3/16/2022 12:00 | ABAN | CMTPLUG | 20.50 | |
| | | REST | FAC | | |

| | | | | | |
|--|--|--|--|--|--|
| Rpt # 1 , 1/26/2022 | | | | | |
| Operations Summary HSE meeting, hazard hunt, reviewed dig plan, performed location line sweep, checked wellhead for gas/pressures, unload equipment, hand excavated around well head to exposed risers, removed old plumbing, made up new assemblies, installed new risers, painted new valves as per code, backfilled excavation, cleared location of brush/mesquite trees, picked up metal scrap, load/secured equipment. | | | | | |

| | | | | | |
|--|--|--|--|--|--|
| Rpt # 2 , 3/10/2022 | | | | | |
| Operations Summary Move on Sunset 33. Complete JSA and safety meeting, update whiteboard, hazard hunt, complete permits. Offload equipment and spot tanks. R/U and R/U rod equipment. R/U hard lines, pump, and return lines. Check pressures - 60 psi tubing, 85 psi on production casing, 0 psi on surface casing - Bleed down tubing. Pressure test tubing 1000 psi for 15 minutes, held good. Secure location and prepare for cold front. | | | | | |

| | | | | | |
|--|--|--|--|--|--|
| Rpt # 3 , 3/11/2022 | | | | | |
| Operations Summary JSA and safety meeting. Check pressures - 20 psi on tubing, 60 psi on production casing, 0 psi on surface casing. Lay down polished rod & unseat pump. R/U floor. Lay down 38 1" steel rods, 44 7/8" steel rods, 10 1-5/8" sinker bars, and 1.5 rod pump. SWA for snow and temperature. Wait until snow storm lifted. Rig down floor and rod equipment. N/D wellhead. N/U 5K 7-1/16" BOP. Pressure test BOP 250 psi for 5 minutes, 1500 psi for 10 minutes, held good. BHD 50 bbls 10 ppg brine w/ scavenger down casing and 20 bbls 10 ppg brine w/ scavenger down tubing. R/U floor and tubing equipment. Release TAC, lay down 5 jts tubing. Secure well for night. | | | | | |

| | | | | | |
|---|--|--|--|--|--|
| Rpt # 4 , 3/14/2022 | | | | | |
| Operations Summary JSA and safety meeting. Check pressures - 0 psi all strings. TOH 144 jts tubing, remove TAC. R/U wireline and make up 3-1/2" shorty w/ CIBP. Rehead wireline. RIH, Set CIBP @ 4697'. R/D wireline. TIH 144 jts, tag CIBP @ 4697'. Spot 110 bbls salt gel to surface. Pressure test casing 1000 psi for 15 minutes, held good. NMOCD Kerry waived WOC and tag due to good pressure test. Mix and spot 100 sx class C 1.32 yield 14.8 ppg @ 4697'-3697'. TOH 49 jts EOT @ 3092'. Mix and spot 25 sx class C 1.32 yield 14.8 ppg cement @ 3072'-2822'. TOH 66 jts EOT @ 942'. Secure well for night. | | | | | |

| | | | | | |
|---|--|--|--|--|--|
| Rpt # 5 , 3/15/2022 | | | | | |
| Operations Summary JSA and safety meeting. Check pressures - 0 psi all strings. TOH 29 jts 2-7/8". Bubble test 5-1/2" and 8-5/8", pass on both. R/U wireline and make up 4spf 0 deg DP. Perforate @ 2093'. Lay down tools. Attempt injection - held 1000 psi for 15 minutes. R/U wireline and make up 4 spf 0 deg DP. Perforate @ 200'. R/D wireline. Establish injection rate 1 bpm @ 1200 psi, bled to 600 psi with pumps stopped. Crew lunch break and retrieve B1 flange from WLU 98. TIH 66 jts 2-7/8", EOT @ 2143'. Recieved approval to execute spot from NMOCD Kerry Fortner. Mix and spot 50 sx class C 1.32 yield 14.8 ppg cement @ 2143'-1649'. TOH lay down 66 jts 2-7/8" tubing. R/D tubing equipment and work floor. N/D 7-1/216" 5K BOP. N/U B1 and checked bubble test, still passing on all strings. Mix and squeeze 100 sx class C 1.32 yield 14.8 ppg cement @ 200-0' (100% excess). SIP 200 psi. R/D. Secure location for night. | | | | | |

| | | | | | |
|--|--|--|--|--|--|
| Rpt # 6 , 3/16/2022 | | | | | |
| Operations Summary JSA and safety meeting. Repair rig. R/D cement pump. Move Sunset 33 to WLU 55. | | | | | |

| | | | | | |
|--|--|--|--|--|--|
| | | | | | |
|--|--|--|--|--|--|

As Plugged Wellbore Schematic

| | | | |
|-------------------------------|-----------|---------------------------|----------------|
| Created: 04/25/19 | By: _____ | Well #: 91 | St. Lse: _____ |
| Updated: _____ | By: _____ | API: 30-025-31456 | |
| Lease: West Lovington Unit | | Unit Ltr.: D | Section: 8 |
| Field: West Lovington Unit | | TSHP/Rng: 17S-36E | |
| Surf. Loc.: 1305 FNL & 15 FWL | | Unit Ltr.: _____ | Section: _____ |
| Bot. Loc.: _____ | | TSHP/Rng: _____ | |
| County: Lea | St.: NM | Directions: Lovington, NM | |
| Status: _____ | | Chevno: OS6088 | |

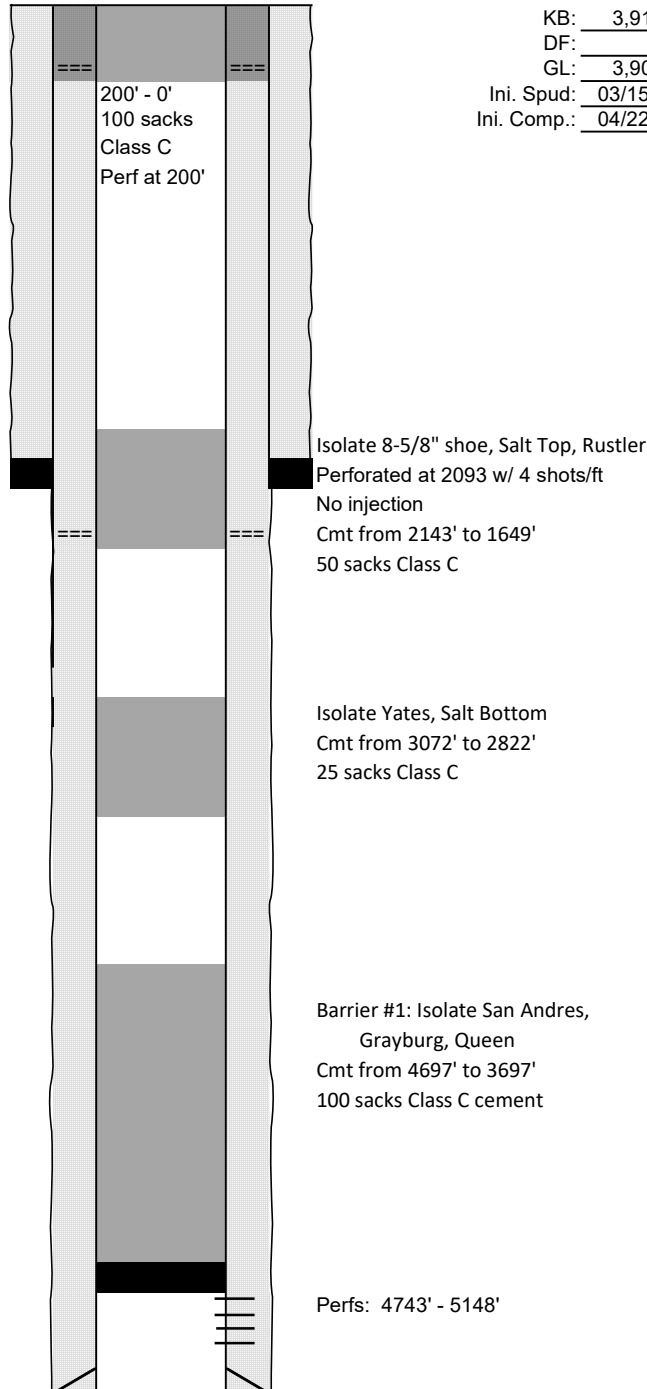
Surface Casing

Size: 8-5/8"
 Wt., Grd.: 24#
 Depth: 1830'
 Sxs Cmt: 700
 Circulate: Yes
 TOC: Surface
 Hole Size: 12-1/4"

KB: 3,916
 DF: _____
 GL: 3,901
 Ini. Spud: 03/15/92
 Ini. Comp.: 04/22/92

Production Casing

Size: 5-1/2"
 Wt., Grd.: 15.5#
 Depth: 5230'
 Sxs Cmt: 1150
 Circulate: Yes
 TOC: Surface
 Hole Size: 7-7/8"



PBTD (est.): 5,181
 TD: 5,230

District I
1625 N. French Dr., Hobbs, NM 88240
Phone:(575) 393-6161 Fax:(575) 393-0720
District II
811 S. First St., Artesia, NM 88210
Phone:(575) 748-1283 Fax:(575) 748-9720
District III
1000 Rio Brazos Rd., Aztec, NM 87410
Phone:(505) 334-6178 Fax:(505) 334-6170
District IV
1220 S. St Francis Dr., Santa Fe, NM 87505
Phone:(505) 476-3470 Fax:(505) 476-3462

State of New Mexico
Energy, Minerals and Natural Resources
Oil Conservation Division
1220 S. St Francis Dr.
Santa Fe, NM 87505

COMMENTS

Action 91002

COMMENTS

| | |
|--|--|
| Operator: CHEVRON U S A INC 6301 Deauville Blvd Midland, TX 79706 | OGRID: 4323 |
| | Action Number: 91002 |
| | Action Type: [C-103] Sub. Plugging (C-103P) |

COMMENTS

| Created By | Comment | Comment Date |
|------------|---------------|--------------|
| plmartinez | DATA ENTRY PM | 5/16/2022 |

District I
1625 N. French Dr., Hobbs, NM 88240
Phone:(575) 393-6161 Fax:(575) 393-0720
District II
811 S. First St., Artesia, NM 88210
Phone:(575) 748-1283 Fax:(575) 748-9720
District III
1000 Rio Brazos Rd., Aztec, NM 87410
Phone:(505) 334-6178 Fax:(505) 334-6170
District IV
1220 S. St Francis Dr., Santa Fe, NM 87505
Phone:(505) 476-3470 Fax:(505) 476-3462

State of New Mexico
Energy, Minerals and Natural Resources
Oil Conservation Division
1220 S. St Francis Dr.
Santa Fe, NM 87505

CONDITIONS

Action 91002

CONDITIONS

| | |
|--|--|
| Operator: CHEVRON U S A INC 6301 Deauville Blvd Midland, TX 79706 | OGRID: 4323 |
| | Action Number: 91002 |
| | Action Type: [C-103] Sub. Plugging (C-103P) |

CONDITIONS

| Created By | Condition | Condition Date |
|------------|--|----------------|
| kfortner | Need C103Q and marker pics for release | 5/11/2022 |