

District I  
1625 N. French Dr., Hobbs, NM 88240  
District II  
811 S. First St., Artesia, NM 88210  
District III  
1000 Rio Brazos Road, Aztec, NM 87410  
District IV  
1220 S. St. Francis Dr., Santa Fe, NM 87505

State of New Mexico  
Energy Minerals and Natural Resources  
Department  
Oil Conservation Division  
1220 South St. Francis Dr.  
Santa Fe, NM 87505

Form C-144  
Revised April 3, 2017

**For temporary pits, below-grade tanks, and multi-well fluid management pits**, submit to the appropriate NMOC District Office.  
**For permanent pits** submit to the Santa Fe Environmental Bureau office and provide a copy to the appropriate NMOC District Office.

Pit, Below-Grade Tank, or  
Proposed Alternative Method Permit or Closure Plan Application

Type of action: ☐ Below grade tank registration  
☐ Permit of a pit or proposed alternative method  
☐ Closure of a pit, below-grade tank, or proposed alternative method  
☒ Modification to an existing permit/or registration  
☐ Closure plan only submitted for an existing permitted or non-permitted pit, below-grade tank, or proposed alternative method

**Instructions: Please submit one application (Form C-144) per individual pit, below-grade tank or alternative request**

Please be advised that approval of this request does not relieve the operator of liability should operations result in pollution of surface water, ground water or the environment. Nor does approval relieve the operator of its responsibility to comply with any other applicable governmental authority's rules, regulations or ordinances.

1.  
Operator: Simcoe, LLC OGRID #: 329736  
Address: 1199 Main Ave, Suite 101 Durango, CO 81301  
Facility or well name: Northeast Blanco Unit 101  
API Number: 30-039-07893 OCD Permit Number: \_\_\_\_\_  
U/L or Qtr/Qtr B / NWNE Section 10 Township 30N Range 07W County: Rio Arriba  
Center of Proposed Design: Latitude 36.830899 Longitude -107.555247 NAD83  
Surface Owner: ☒ Federal ☐ State ☐ Private ☐ Tribal Trust or Indian Allotment

2.  
☐ **Pit:** Subsection F, G or J of 19.15.17.11 NMAC  
Temporary: ☐ Drilling ☐ Workover  
☐ Permanent ☐ Emergency ☐ Cavitation ☐ P&A ☐ Multi-Well Fluid Management Low Chloride Drilling Fluid ☐ yes ☐ no  
☐ Lined ☐ Unlined Liner type: Thickness \_\_\_\_\_ mil ☐ LLDPE ☐ HDPE ☐ PVC ☐ Other \_\_\_\_\_  
☐ String-Reinforced  
Liner Seams: ☐ Welded ☐ Factory ☐ Other \_\_\_\_\_ Volume: \_\_\_\_\_ bbl Dimensions: L \_\_\_\_\_ x W \_\_\_\_\_ x D \_\_\_\_\_

3.  
☒ **Below-grade tank:** Subsection I of 19.15.17.11 NMAC  
Volume: 80 bbl Type of fluid: Produced water & oil  
Tank Construction material: Steel  
☐ Secondary containment with leak detection ☐ Visible sidewalls, liner, 6-inch lift and automatic overflow shut-off  
☒ Visible sidewalls and liner ☐ Visible sidewalls only ☒ Other High level detection device  
Liner type: Thickness 60 mil ☒ HDPE ☐ PVC ☐ Other \_\_\_\_\_

4.  
☐ **Alternative Method:**  
Submittal of an exception request is required. Exceptions must be submitted to the Santa Fe Environmental Bureau office for consideration of approval.

5.  
**Fencing:** Subsection D of 19.15.17.11 NMAC (*Applies to permanent pits, temporary pits, and below-grade tanks*)  
☐ Chain link, six feet in height, two strands of barbed wire at top (*Required if located within 1000 feet of a permanent residence, school, hospital, institution or church*)  
☐ Four foot height, four strands of barbed wire evenly spaced between one and four feet  
☒ Alternate. Please specify Steel Mesh Fence with single strand barbed wire

6.

**Netting:** Subsection E of 19.15.17.11 NMAC (*Applies to permanent pits and permanent open top tanks*)☐ Screen ☐ Netting ☒ Other Expanded Metal top☐ Monthly inspections (If netting or screening is not physically feasible)

7.

**Signs:** Subsection C of 19.15.17.11 NMAC☐ 12"x 24", 2" lettering, providing Operator's name, site location, and emergency telephone numbers☒ Signed in compliance with 19.15.16.8 NMAC

8.

**Variances and Exceptions:**

Justifications and/or demonstrations of equivalency are required. Please refer to 19.15.17 NMAC for guidance.

***Please check a box if one or more of the following is requested, if not leave blank:***☐ Variance(s): Requests must be submitted to the appropriate division district for consideration of approval.☐ Exception(s): Requests must be submitted to the Santa Fe Environmental Bureau office for consideration of approval.

9.

**Siting Criteria (regarding permitting):** 19.15.17.10 NMAC***Instructions: The applicant must demonstrate compliance for each siting criteria below in the application. Recommendations of acceptable source material are provided below. Siting criteria does not apply to drying pads or above-grade tanks.*****General siting****Ground water is less than 25 feet below the bottom of a low chloride temporary pit or below-grade tank.**- ☐ NM Office of the State Engineer - iWATERS database search; ☐ USGS; ☐ Data obtained from nearby wells☐ Yes ☒ No☐ NA**Ground water is less than 50 feet below the bottom of a Temporary pit, permanent pit, or Multi-Well Fluid Management pit .**

NM Office of the State Engineer - iWATERS database search; USGS; Data obtained from nearby wells

☐ Yes ☐ No☒ NAWithin incorporated municipal boundaries or within a defined municipal fresh water well field covered under a municipal ordinance adopted pursuant to NMSA 1978, Section 3-27-3, as amended. **(Does not apply to below grade tanks)**

- Written confirmation or verification from the municipality; Written approval obtained from the municipality

☐ Yes ☐ NoWithin the area overlying a subsurface mine. **(Does not apply to below grade tanks)**

- Written confirmation or verification or map from the NM EMNRD-Mining and Mineral Division

☐ Yes ☐ NoWithin an unstable area. **(Does not apply to below grade tanks)**

- Engineering measures incorporated into the design; NM Bureau of Geology &amp; Mineral Resources; USGS; NM Geological Society; Topographic map

☐ Yes ☐ NoWithin a 100-year floodplain. **(Does not apply to below grade tanks)**

- FEMA map

☐ Yes ☐ No**Below Grade Tanks**

Within 100 feet of a continuously flowing watercourse, significant watercourse, lake bed, sinkhole, wetland or playa lake (measured from the ordinary high-water mark).

- Topographic map; Visual inspection (certification) of the proposed site

☐ Yes ☒ No

Within 200 horizontal feet of a spring or a fresh water well used for public or livestock consumption;.

- NM Office of the State Engineer - iWATERS database search; Visual inspection (certification) of the proposed site

☐ Yes ☒ No**Temporary Pit using Low Chloride Drilling Fluid** (maximum chloride content 15,000 mg/liter)

Within 100 feet of a continuously flowing watercourse, or any other significant watercourse or within 200 feet of any lakebed, sinkhole, or playa lake (measured from the ordinary high-water mark). (Applies to low chloride temporary pits.)

- Topographic map; Visual inspection (certification) of the proposed site

☐ Yes ☐ No

Within 300 feet from a occupied permanent residence, school, hospital, institution, or church in existence at the time of initial application.

- Visual inspection (certification) of the proposed site; Aerial photo; Satellite image

☐ Yes ☐ No

Within 200 horizontal feet of a spring or a private, domestic fresh water well used by less than five households for domestic or stock watering purposes, or 300feet of any other fresh water well or spring, in existence at the time of the initial application.

NM Office of the State Engineer - iWATERS database search; Visual inspection (certification) of the proposed site

☐ Yes ☐ No

Within 100 feet of a wetland.

- US Fish and Wildlife Wetland Identification map; Topographic map; Visual inspection (certification) of the proposed site

☐ Yes ☐ No

### **Temporary Pit Non-low chloride drilling fluid**

Within 300 feet of a continuously flowing watercourse, or any other significant watercourse, or within 200 feet of any lakebed, sinkhole, or playa lake (measured from the ordinary high-water mark).

- Topographic map; Visual inspection (certification) of the proposed site

☐ Yes ☐ No

Within 300 feet from a permanent residence, school, hospital, institution, or church in existence at the time of initial application.

- Visual inspection (certification) of the proposed site; Aerial photo; Satellite image

☐ Yes ☐ No

Within 500 horizontal feet of a spring or a private, domestic fresh water well used by less than five households for domestic or stock watering purposes, or 1000 feet of any other fresh water well or spring, in the existence at the time of the initial application;

- NM Office of the State Engineer - iWATERS database search; Visual inspection (certification) of the proposed site

☐ Yes ☐ No

Within 300 feet of a wetland.

- US Fish and Wildlife Wetland Identification map; Topographic map; Visual inspection (certification) of the proposed site

☐ Yes ☐ No

### **Permanent Pit or Multi-Well Fluid Management Pit**

Within 300 feet of a continuously flowing watercourse, or 200 feet of any other significant watercourse, or lakebed, sinkhole, or playa lake (measured from the ordinary high-water mark).

- Topographic map; Visual inspection (certification) of the proposed site

☐ Yes ☐ No

Within 1000 feet from a permanent residence, school, hospital, institution, or church in existence at the time of initial application.

- Visual inspection (certification) of the proposed site; Aerial photo; Satellite image

☐ Yes ☐ No

Within 500 horizontal feet of a spring or a fresh water well used for domestic or stock watering purposes, in existence at the time of initial application.

- NM Office of the State Engineer - iWATERS database search; Visual inspection (certification) of the proposed site

☐ Yes ☐ No

Within 500 feet of a wetland.

- US Fish and Wildlife Wetland Identification map; Topographic map; Visual inspection (certification) of the proposed site

☐ Yes ☐ No

10.

#### **Temporary Pits, Emergency Pits, and Below-grade Tanks Permit Application Attachment Checklist:** Subsection B of 19.15.17.9 NMAC

**Instructions:** Each of the following items must be attached to the application. Please indicate, by a check mark in the box, that the documents are attached.

- ☒ Hydrogeologic Report (Below-grade Tanks) - based upon the requirements of Paragraph (4) of Subsection B of 19.15.17.9 NMAC
- ☐ Hydrogeologic Data (Temporary and Emergency Pits) - based upon the requirements of Paragraph (2) of Subsection B of 19.15.17.9 NMAC
- ☒ Siting Criteria Compliance Demonstrations - based upon the appropriate requirements of 19.15.17.10 NMAC
- ☒ Design Plan - based upon the appropriate requirements of 19.15.17.11 NMAC
- ☒ Operating and Maintenance Plan - based upon the appropriate requirements of 19.15.17.12 NMAC
- ☒ Closure Plan (Please complete Boxes 14 through 18, if applicable) - based upon the appropriate requirements of Subsection C of 19.15.17.9 NMAC and 19.15.17.13 NMAC

☐ Previously Approved Design (attach copy of design) API Number: \_\_\_\_\_ or Permit Number: \_\_\_\_\_

11.

#### **Multi-Well Fluid Management Pit Checklist:** Subsection B of 19.15.17.9 NMAC

**Instructions:** Each of the following items must be attached to the application. Please indicate, by a check mark in the box, that the documents are attached.

- ☐ Design Plan - based upon the appropriate requirements of 19.15.17.11 NMAC
- ☐ Operating and Maintenance Plan - based upon the appropriate requirements of 19.15.17.12 NMAC
- ☐ A List of wells with approved application for permit to drill associated with the pit.
- ☐ Closure Plan (Please complete Boxes 14 through 18, if applicable) - based upon the appropriate requirements of Subsection C of 19.15.17.9 NMAC and 19.15.17.13 NMAC
- ☐ Hydrogeologic Data - based upon the requirements of Paragraph (4) of Subsection B of 19.15.17.9 NMAC
- ☐ Siting Criteria Compliance Demonstrations - based upon the appropriate requirements of 19.15.17.10 NMAC

☐ Previously Approved Design (attach copy of design) API Number: \_\_\_\_\_ or Permit Number: \_\_\_\_\_

12.

**Permanent Pits Permit Application Checklist:** Subsection B of 19.15.17.9 NMAC

**Instructions:** Each of the following items must be attached to the application. Please indicate, by a check mark in the box, that the documents are attached.

- ☐ Hydrogeologic Report - based upon the requirements of Paragraph (1) of Subsection B of 19.15.17.9 NMAC  
☐ Siting Criteria Compliance Demonstrations - based upon the appropriate requirements of 19.15.17.10 NMAC  
☐ Climatological Factors Assessment  
☐ Certified Engineering Design Plans - based upon the appropriate requirements of 19.15.17.11 NMAC  
☐ Dike Protection and Structural Integrity Design - based upon the appropriate requirements of 19.15.17.11 NMAC  
☐ Leak Detection Design - based upon the appropriate requirements of 19.15.17.11 NMAC  
☐ Liner Specifications and Compatibility Assessment - based upon the appropriate requirements of 19.15.17.11 NMAC  
☐ Quality Control/Quality Assurance Construction and Installation Plan  
☐ Operating and Maintenance Plan - based upon the appropriate requirements of 19.15.17.12 NMAC  
☐ Freeboard and Overtopping Prevention Plan - based upon the appropriate requirements of 19.15.17.11 NMAC  
☐ Nuisance or Hazardous Odors, including H<sub>2</sub>S, Prevention Plan  
☐ Emergency Response Plan  
☐ Oil Field Waste Stream Characterization  
☐ Monitoring and Inspection Plan  
☐ Erosion Control Plan  
☐ Closure Plan - based upon the appropriate requirements of Subsection C of 19.15.17.9 NMAC and 19.15.17.13 NMAC

13.

**Proposed Closure:** 19.15.17.13 NMAC

**Instructions:** Please complete the applicable boxes, Boxes 14 through 18, in regards to the proposed closure plan.

- Type: ☐ Drilling ☐ Workover ☐ Emergency ☐ Cavitation ☐ P&A ☐ Permanent Pit ☒ Below-grade Tank ☐ Multi-well Fluid Management Pit  
☐ Alternative
- Proposed Closure Method: ☒ Waste Excavation and Removal  
☐ Waste Removal (Closed-loop systems only)  
☐ On-site Closure Method (Only for temporary pits and closed-loop systems)  
☐ In-place Burial ☐ On-site Trench Burial  
☐ Alternative Closure Method

14.

**Waste Excavation and Removal Closure Plan Checklist:** (19.15.17.13 NMAC) **Instructions:** Each of the following items must be attached to the closure plan. Please indicate, by a check mark in the box, that the documents are attached.

- ☒ Protocols and Procedures - based upon the appropriate requirements of 19.15.17.13 NMAC  
☒ Confirmation Sampling Plan (if applicable) - based upon the appropriate requirements of Subsection C of 19.15.17.13 NMAC  
☒ Disposal Facility Name and Permit Number (for liquids, drilling fluids and drill cuttings)  
☒ Soil Backfill and Cover Design Specifications - based upon the appropriate requirements of Subsection H of 19.15.17.13 NMAC  
☒ Re-vegetation Plan - based upon the appropriate requirements of Subsection H of 19.15.17.13 NMAC  
☒ Site Reclamation Plan - based upon the appropriate requirements of Subsection H of 19.15.17.13 NMAC

15.

**Siting Criteria (regarding on-site closure methods only):** 19.15.17.10 NMAC

**Instructions:** Each siting criteria requires a demonstration of compliance in the closure plan. Recommendations of acceptable source material are provided below. Requests regarding changes to certain siting criteria require justifications and/or demonstrations of equivalency. Please refer to 19.15.17.10 NMAC for guidance.

Ground water is less than 25 feet below the bottom of the buried waste. - NM Office of the State Engineer - iWATERS database search; USGS; Data obtained from nearby wells	<input type="checkbox"/> Yes <input type="checkbox"/> No <input type="checkbox"/> NA
Ground water is between 25-50 feet below the bottom of the buried waste - NM Office of the State Engineer - iWATERS database search; USGS; Data obtained from nearby wells	<input type="checkbox"/> Yes <input type="checkbox"/> No <input type="checkbox"/> NA
Ground water is more than 100 feet below the bottom of the buried waste. - NM Office of the State Engineer - iWATERS database search; USGS; Data obtained from nearby wells	<input type="checkbox"/> Yes <input type="checkbox"/> No <input type="checkbox"/> NA
Within 100 feet of a continuously flowing watercourse, or 200 feet of any other significant watercourse, lakebed, sinkhole, or playa lake (measured from the ordinary high-water mark). - Topographic map; Visual inspection (certification) of the proposed site	<input type="checkbox"/> Yes <input type="checkbox"/> No
Within 300 feet from a permanent residence, school, hospital, institution, or church in existence at the time of initial application. - Visual inspection (certification) of the proposed site; Aerial photo; Satellite image	<input type="checkbox"/> Yes <input type="checkbox"/> No
Within 300 horizontal feet of a private, domestic fresh water well or spring used for domestic or stock watering purposes, in existence at the time of initial application. - NM Office of the State Engineer - iWATERS database; Visual inspection (certification) of the proposed site	<input type="checkbox"/> Yes <input type="checkbox"/> No
Written confirmation or verification from the municipality; Written approval obtained from the municipality	<input type="checkbox"/> Yes <input type="checkbox"/> No
Within 300 feet of a wetland. US Fish and Wildlife Wetland Identification map; Topographic map; Visual inspection (certification) of the proposed site	<input type="checkbox"/> Yes <input type="checkbox"/> No
Within incorporated municipal boundaries or within a defined municipal fresh water well field covered under a municipal ordinance	



adopted pursuant to NMSA 1978, Section 3-27-3, as amended.

- Written confirmation or verification from the municipality; Written approval obtained from the municipality

☐ Yes ☐ No

Within the area overlying a subsurface mine.

- Written confirmation or verification or map from the NM EMNRD-Mining and Mineral Division

☐ Yes ☐ No

Within an unstable area.

- Engineering measures incorporated into the design; NM Bureau of Geology & Mineral Resources; USGS; NM Geological Society; Topographic map

☐ Yes ☐ No

Within a 100-year floodplain.

- FEMA map

☐ Yes ☐ No

16.

**On-Site Closure Plan Checklist:** (19.15.17.13 NMAC) *Instructions: Each of the following items must be attached to the closure plan. Please indicate, by a check mark in the box, that the documents are attached.*

- ☐ Siting Criteria Compliance Demonstrations - based upon the appropriate requirements of 19.15.17.10 NMAC
- ☐ Proof of Surface Owner Notice - based upon the appropriate requirements of Subsection E of 19.15.17.13 NMAC
- ☐ Construction/Design Plan of Burial Trench (if applicable) based upon the appropriate requirements of Subsection K of 19.15.17.11 NMAC
- ☐ Construction/Design Plan of Temporary Pit (for in-place burial of a drying pad) - based upon the appropriate requirements of 19.15.17.11 NMAC
- ☐ Protocols and Procedures - based upon the appropriate requirements of 19.15.17.13 NMAC
- ☐ Confirmation Sampling Plan (if applicable) - based upon the appropriate requirements of 19.15.17.13 NMAC
- ☐ Waste Material Sampling Plan - based upon the appropriate requirements of 19.15.17.13 NMAC
- ☐ Disposal Facility Name and Permit Number (for liquids, drilling fluids and drill cuttings or in case on-site closure standards cannot be achieved)
- ☐ Soil Cover Design - based upon the appropriate requirements of Subsection H of 19.15.17.13 NMAC
- ☐ Re-vegetation Plan - based upon the appropriate requirements of Subsection H of 19.15.17.13 NMAC
- ☐ Site Reclamation Plan - based upon the appropriate requirements of Subsection H of 19.15.17.13 NMAC

17.

**Operator Application Certification:**

I hereby certify that the information submitted with this application is true, accurate and complete to the best of my knowledge and belief.

Name (Print): Sabre Beebe

Title: Environmental Coordinator

Signature: Sabre Beebe

Date: 04/26/2022

e-mail address: sabre.beebe@ikavenenergy.com

Telephone: 970-852-5172

18.

**OCD Approval:** ☐ Permit Application (including closure plan) ☐ Closure Plan (only) ☐ OCD Conditions (see attachment)

**OCD Representative Signature:** \_\_\_\_\_ **Approval Date:** \_\_\_\_\_

**Title:** \_\_\_\_\_ **OCD Permit Number:** \_\_\_\_\_

19.

**Closure Report (required within 60 days of closure completion):** 19.15.17.13 NMAC

*Instructions: Operators are required to obtain an approved closure plan prior to implementing any closure activities and submitting the closure report. The closure report is required to be submitted to the division within 60 days of the completion of the closure activities. Please do not complete this section of the form until an approved closure plan has been obtained and the closure activities have been completed.*

☐ **Closure Completion Date:** \_\_\_\_\_

20.

**Closure Method:**

- ☐ Waste Excavation and Removal ☐ On-Site Closure Method ☐ Alternative Closure Method ☐ Waste Removal (Closed-loop systems only)
- ☐ If different from approved plan, please explain.

21.

**Closure Report Attachment Checklist:** *Instructions: Each of the following items must be attached to the closure report. Please indicate, by a check mark in the box, that the documents are attached.*

- ☐ Proof of Closure Notice (surface owner and division)
- ☐ Proof of Deed Notice (required for on-site closure for private land only)
- ☐ Plot Plan (for on-site closures and temporary pits)
- ☐ Confirmation Sampling Analytical Results (if applicable)
- ☐ Waste Material Sampling Analytical Results (required for on-site closure)
- ☐ Disposal Facility Name and Permit Number
- ☐ Soil Backfilling and Cover Installation
- ☐ Re-vegetation Application Rates and Seeding Technique
- ☐ Site Reclamation (Photo Documentation)

On-site Closure Location: Latitude \_\_\_\_\_ Longitude \_\_\_\_\_ NAD: ☐ 1927 ☐ 1983

22.

**Operator Closure Certification:**

I hereby certify that the information and attachments submitted with this closure report is true, accurate and complete to the best of my knowledge and belief. I also certify that the closure complies with all applicable closure requirements and conditions specified in the approved closure plan.

Name (Print): \_\_\_\_\_ Title: \_\_\_\_\_

Signature: \_\_\_\_\_ Date: \_\_\_\_\_

e-mail address: \_\_\_\_\_ Telephone: \_\_\_\_\_

## **Hydrogeological Report for the NEBU 101**

### **Geology:**

The stratigraphic sequence of Paleocene and Eocene rocks in the eastern part of the San Juan basin is the Nacimiento and Animas formation overlain by the San Jose Formation. The San Jose Formation of Eocene age was defined by Simpson (1948a, b). It occurs in New Mexico and Colorado and its outcrop forms the land surface over much of the central basin area. It overlies the Nacimiento Formation in the area generally south of the State line (Fassett, 1974, P229). The Basal contact of the San Jose varies with location in the basin. This contact is a disconformity along the basin margins, and it is an angular unconformity along the Nacimiento uplift; the contact is conformable in the central basin. The Nacimiento is a sequence of varicolored beds of sandstone and mudrock that attains a thickness of as much as 120 m thick (Baltz, 1967).

The Animas Formation occupies a stratigraphic position similar to that of the OJO Alamo and Nacimiento Formations. The Animas strata comprise a general fining upward sequence of volcanoclastic conglomerates and sandstones, with arkosic conglomerates and sandstones near the top. The upper member of the Animas has been shown to interfinger with the Nacimiento in its eastern (Dane, 1946) and western (Barnes et al., 1954) outcrop belts. Subsurface correlation of these formations has not been carried out in any detail because of the difficulty of recognizing their contact on Electric logs (Fassett and Hinds, 1971:33).

The nature of the contact between the lower Eocene San Jose Formation and the Nacimiento formation north of latitude 36 degrees 45'N has been described as conformable (Barnes et al., 1954, Stone et al., 1983 25-26), Whereas at latitude 36 it has been shown to be unconformable (Baltz, 1967; Lucas et al., 1981) Contact relationships between the San Jose and Animas Formations in the northernmost San Juan Basin have been shown to be intertonguing (Smith, 1988). The San Jose formation was deposited in various fluvial type environments. In general the unit consists of an interbedded sequence of sandstone siltstone and variegated shale, the sandstones are buff to yellow and rusty-colored crossbedded very fine to coarse grained arkose, which are locally conglomeratic and contain abundant silicified wood. The thickness of the San Jose Nacimiento and Animas Formations is ranges from zero to more than 3,500 feet in the east central part of the structural basin. The bottom of the Nacimiento and Animas Formations decreases from a maximum altitude of more than 8 000 feet above sea level along the northeastern basin rim to less than 4,000 feet above sea level in the east central part of the basin.

### **Hydraulic Properties:**

The San Jose, Nacimiento, and Animas Formations are a source of water for public-supply, commercial, private-domestic, and livestock use in areas where drilling depths and pumping levels are economically feasible and where water quality is suitable. Water in the San Jose Nacimiento and Animas Formations occurs under both water table and

artesian conditions. Recharge to the aquifer is from infiltration of precipitation and stream flow on outcrops and from vertical upward leakage of water from underlying units. Transmissivity data for the San Jose Nacimiento and Animas Formations are minimal-Values of 40 and 120 feet squared per day were determined from two aquifer tests (Stone and others 1983 table 5). The reported or measured discharge from 79 water wells completed in the San Jose, Nacimiento, and Animas Formations ranges from 1 to 61 gallons per minute and the median is 6 gallons per minute. The specific capacity of 12 of these wells ranges from 0.03 to 2.30 gallons per minute per foot of drawdown and the median is 0.23 gallon per minute per foot of drawdown. Water quality data described in this section are from the NWIS data base and were collected during 1938. 84 Well records were checked to assure to the extent possible that a particular sample represents water only from the San Jose Nacimiento and Animas Formations and not a mixture of water from other aquifers. Locally however these formations may have substantial differences in the concentration of some water quality constituents due in part to differences in rock characteristics as described in the Geology section.

**Reference:**

USGS Hydrologic investigations atlas HA-720-A plate 1,2  
Lucas, Spencer G and Smith, Larry N. 1991, Stratigraphy, Sedimentology and Paleontology of the Lower Eocene San Jose Formation in the central portion of the San Juan basin, Northwestern New Mexico, New Mexico Bureau of Mines & Mineral Resources Bulletin 126. 6-7p.

## **Sitting Requirements for NEBU 101**

The NEBU 101 is not located in an unstable area per topographic map attached.

There is no continuously flowing watercourse near the proposed location.

The proposed well location is neither near any private and/or public buildings nor any private and/or public water sources.

The proposed well location is not located within any incorporated municipal boundaries or municipal fresh water well field.

There are no wetlands located near the proposed well location as per the wetlands map attached.

Per the NM Bureau of Geology and Mineral Resources map attached there are no locations of any mines, mills or quarries near the proposed well location.

The FEMA floodplain map attached indicates the proposed well location is defined as outside of the 500 Year Flood Plain.

There will be no excavated material placed within 300 feet of a flowing watercourse or within 200 feet of any other defined water course.





# New Mexico Office of the State Engineer

## Transaction Summary

### CPDPP Change POD & Place &/or Purpose of Use (Surface)

Transaction Number: 324115 Transaction Desc: SP 03480-11 File Date: 08/19/1988

Primary Status: PMT Permit  
 Secondary Status: APR Approved  
 Person Assigned: \*\*\*\*\*  
 Applicant: MERIDIAN OIL INC.

#### Events

	Date	Type	Description	Comment	Processed By
	08/19/1988	APP	Application Received	*	*****
	08/19/1988	MAP	Map or Plat Received	*RECEIVED 8/8/88	*****
	09/29/1988	NUC	No PBU or PCW Approval		*****
	09/29/1988	FIN	Final Action on application		*****
	07/27/2005	QAT	Quality Assurance Completed	SQ2	*****
	09/09/2005	QAT	Quality Assurance Completed	IMAGE CPDPP AND	*****
	01/02/2007	ARW	WRAB Main File Rm Arch Sect	SP 03480 Archived	*****

#### Change From:

WR File Nbr	Acres	Diversion	Consumptive	Purpose of Use
SP 02917	0	10		IRR IRRIGATION

#### \*\*Point of Diversion

SP 02917 267234 4077286\*

\*An (\*) after northing value indicates UTM location was derived from PLSS - see Help

#### \*\*Place of Use

Q	Q	Q	Q	Sec	Tws	Rng	Acres	Diversion	Consumptive	Use	Priority	Status	Other	Loc	Desc
256	64	16	4				0	0		IRR	09/16/1957	PMT	NAVAJO		
													RESERVOIR		
													CONTRACT		
													WATER		

#### Change To:

WR File Nbr	Acres	Diversion	Consumptive	Purpose of Use
SP 03480	0	10		IND INDUSTRIAL

#### \*\*Point of Diversion

SP 03480 11 282842 4092867\*

\*An (\*) after northing value indicates UTM location was derived from PLSS - see Help

#### \*\*Place of Use

Q	Q	Q	Q	Sec	Tws	Rng	Acres	Diversion	Consumptive	Use	Priority	Status	Other	Loc	Desc
256	64	16	4												

0

0

IND 09/16/1957

EXP

PLACE OF USE  
IS SAN JUAN  
AND RIO  
ARRIBA  
COUNTIES, NM

x

**Remarks**

THE SOURCE OF WATER IS CONTRACT WATER FROM THE NAVAJO RESERVOIR. WATER IS MADE AVAILABLE TO THE PERMITTEE THROUGH CONTRACT WITH THE U.S. DEPARTMENT OF THE INTERIOR, BUREAU OF RECLAMATION.

x

**Conditions**

- 5A A totalizing meter shall be installed before the first branch of the discharge line from the well and the installation shall be acceptable to the State Engineer; the Engineer shall be advised of the make, model, serial number, date of installation, and initial reading of the meter prior to appropriation of water; pumping records shall be submitted to the District Supervisor for each calendar month on or before the 10th day of the following month.

x

**Action of the State Engineer**

**\*\* See Image For Any Additional Conditions of Approval \*\***

**Approval Code:** A - Approved

**Action Date:** 09/29/1988

**State Engineer:**

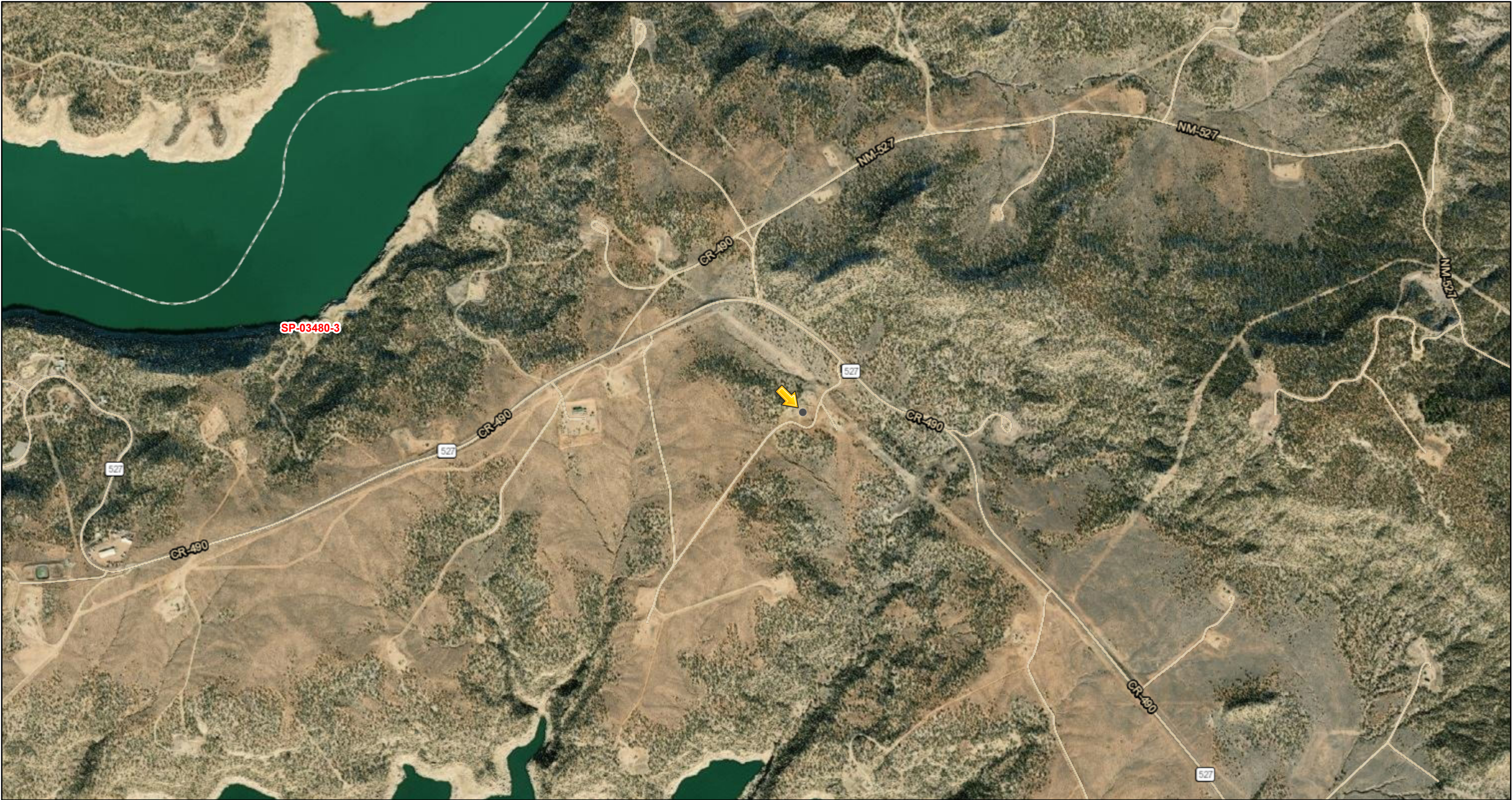
The data is furnished by the NMOSE/ISC and is accepted by the recipient with the expressed understanding that the OSE/ISC make no warranties, expressed or implied, concerning the accuracy, completeness, reliability, usability, or suitability for any particular purpose of the data.

4/26/22 6:43 AM

TRANSACTION SUMMARY



# OSE POD Locations Map



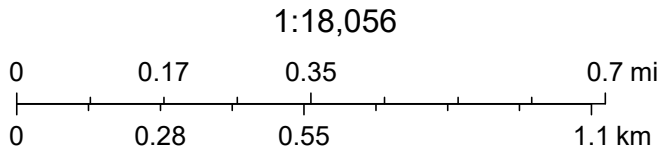
4/26/2022, 6:53:31 AM

- Override 1
- OSE District Boundary
- Surface Water Sub Basins
- SiteBoundaries

- Sample Locations
- Well
  - Abandoned Well
  - Oil, Gas Well
  - Abandoned Oil, Gas Well

- Surface
- Surface/Sediment
- Sediment
- Precipitation Gauge
- Abandoned Precipitation Gauge

- Air Particulate
- Abandoned Air Particulate
- Treatment System
- Abandoned Treatment System



Source: Esri, Maxar, GeoEye, Earthstar Geographics, CNES/Airbus DS, USDA, USGS, AeroGRID, IGN, and the GIS User Community, Esri, HERE, Garmin, (c) OpenStreetMap contributors, Esri, HERE, Garmin, (c) OpenStreetMap contributors, and the GIS user community, U.S. Department of Energy Office of Legacy

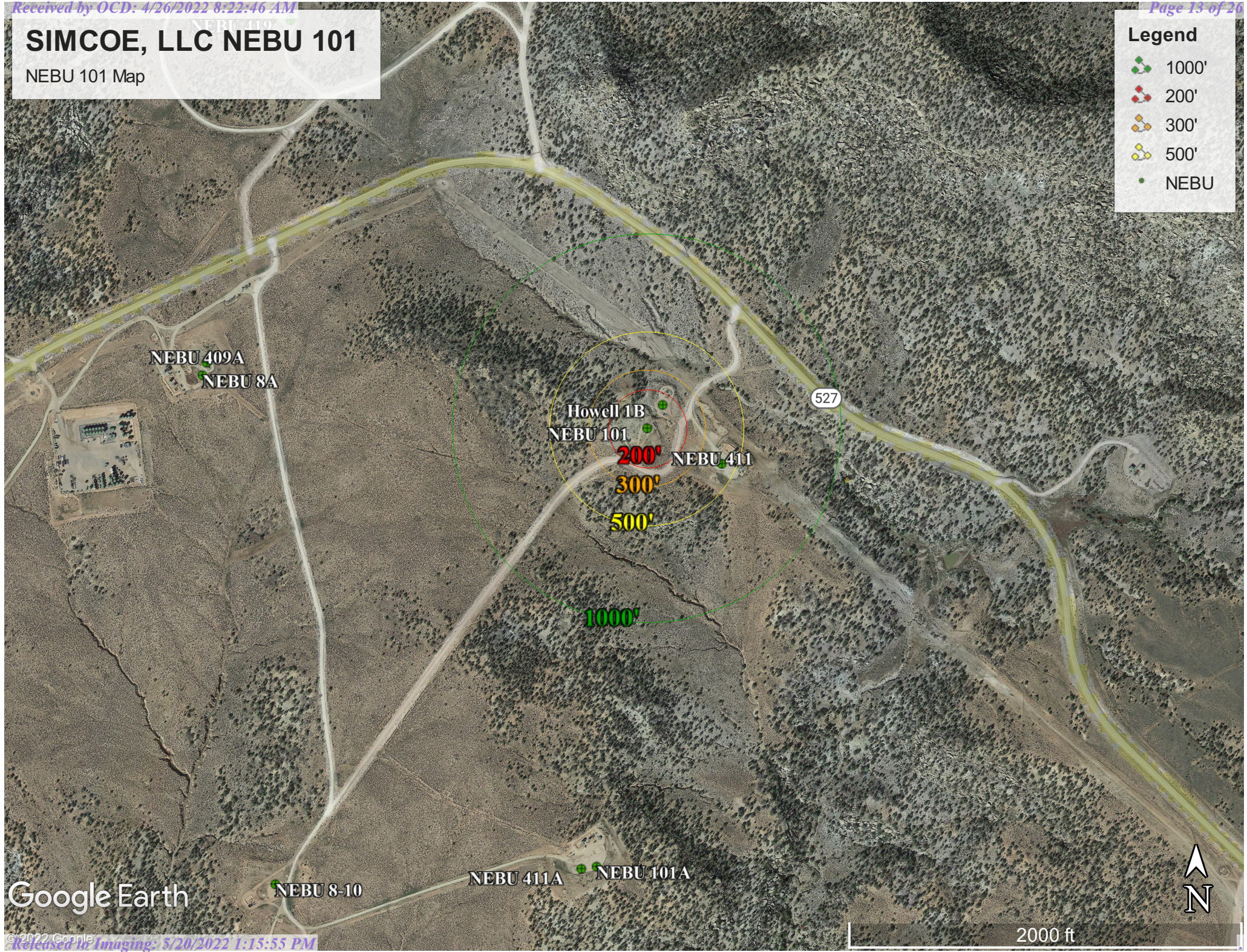


# SIMCOE, LLC NEBU 101

NEBU 101 Map

**Legend**

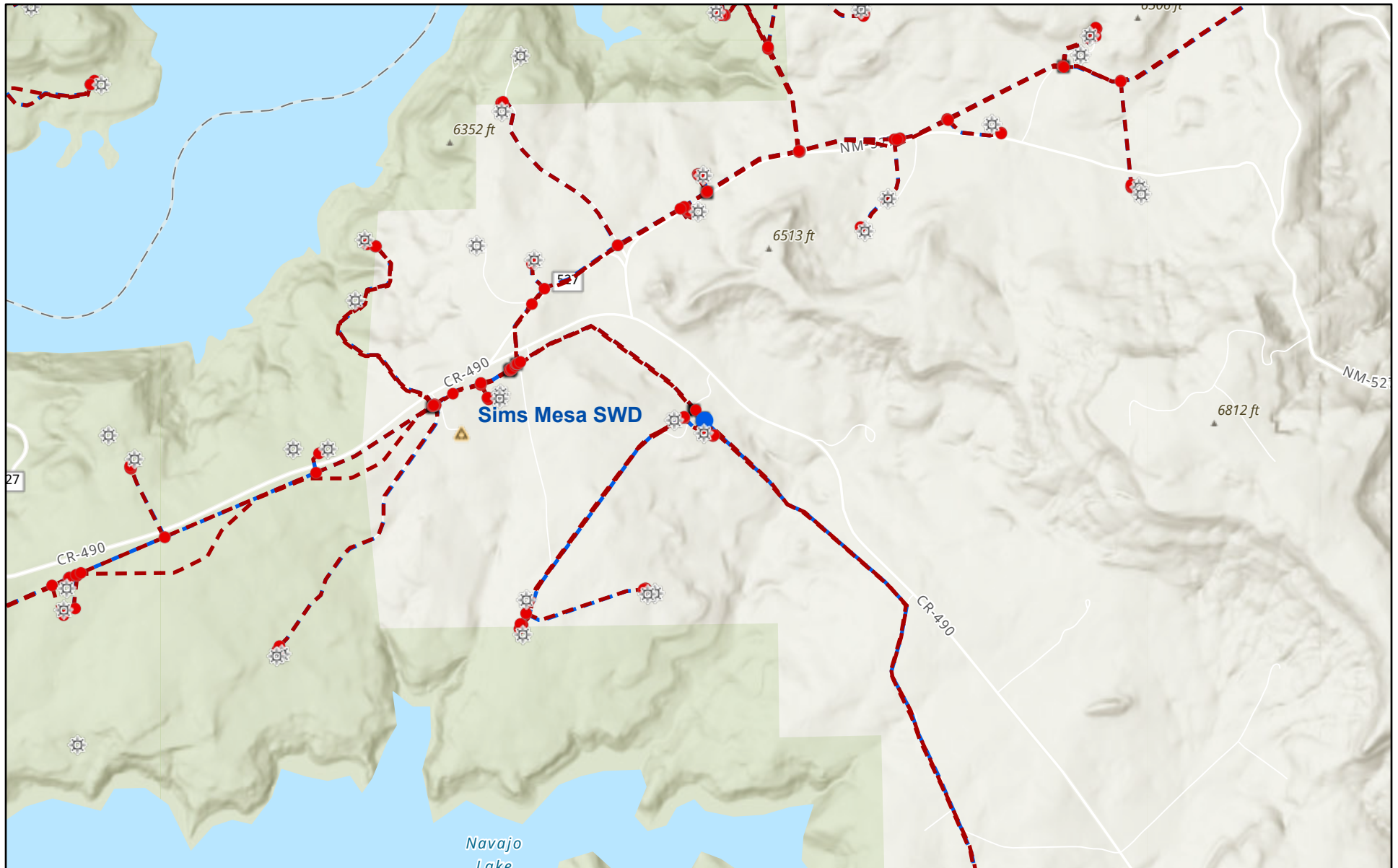
- 1000'
- 200'
- 300'
- 500'
- NEBU



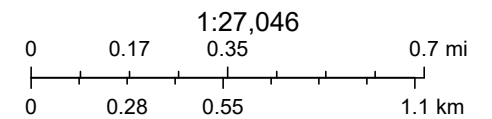
Google Earth



## IKAV GIS Map

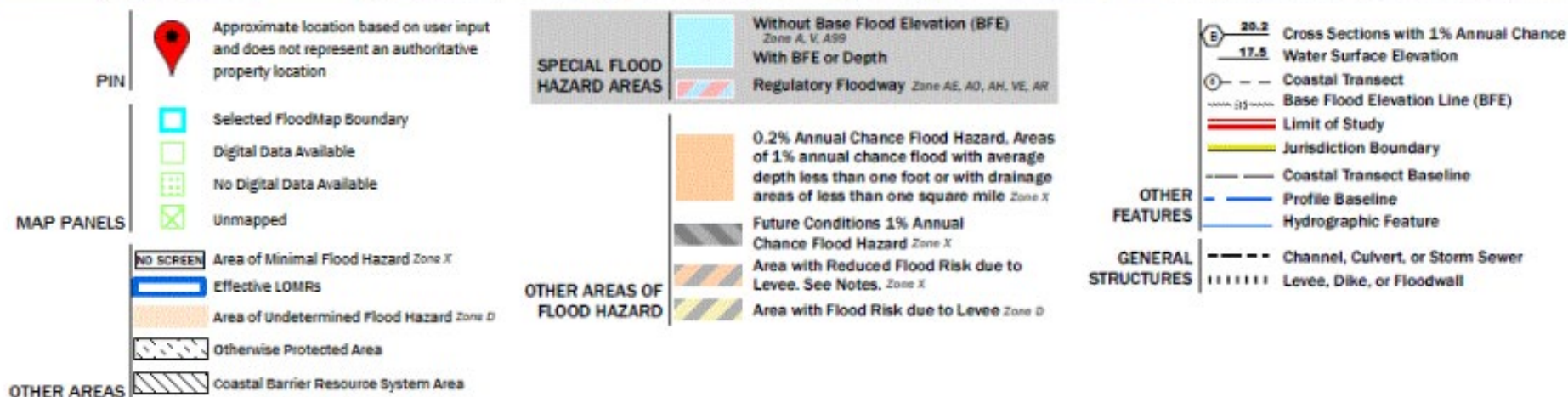
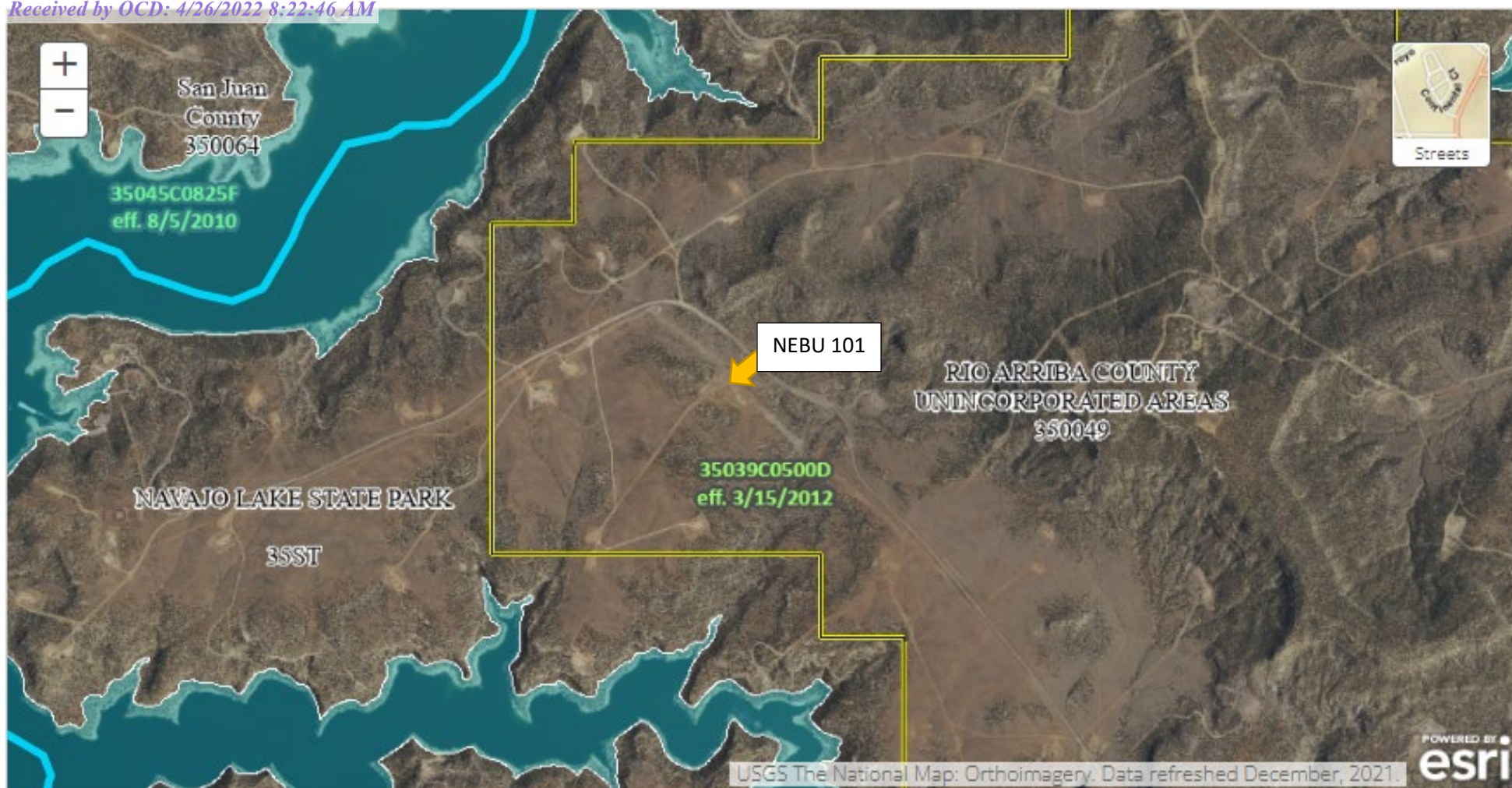


4/26/2022



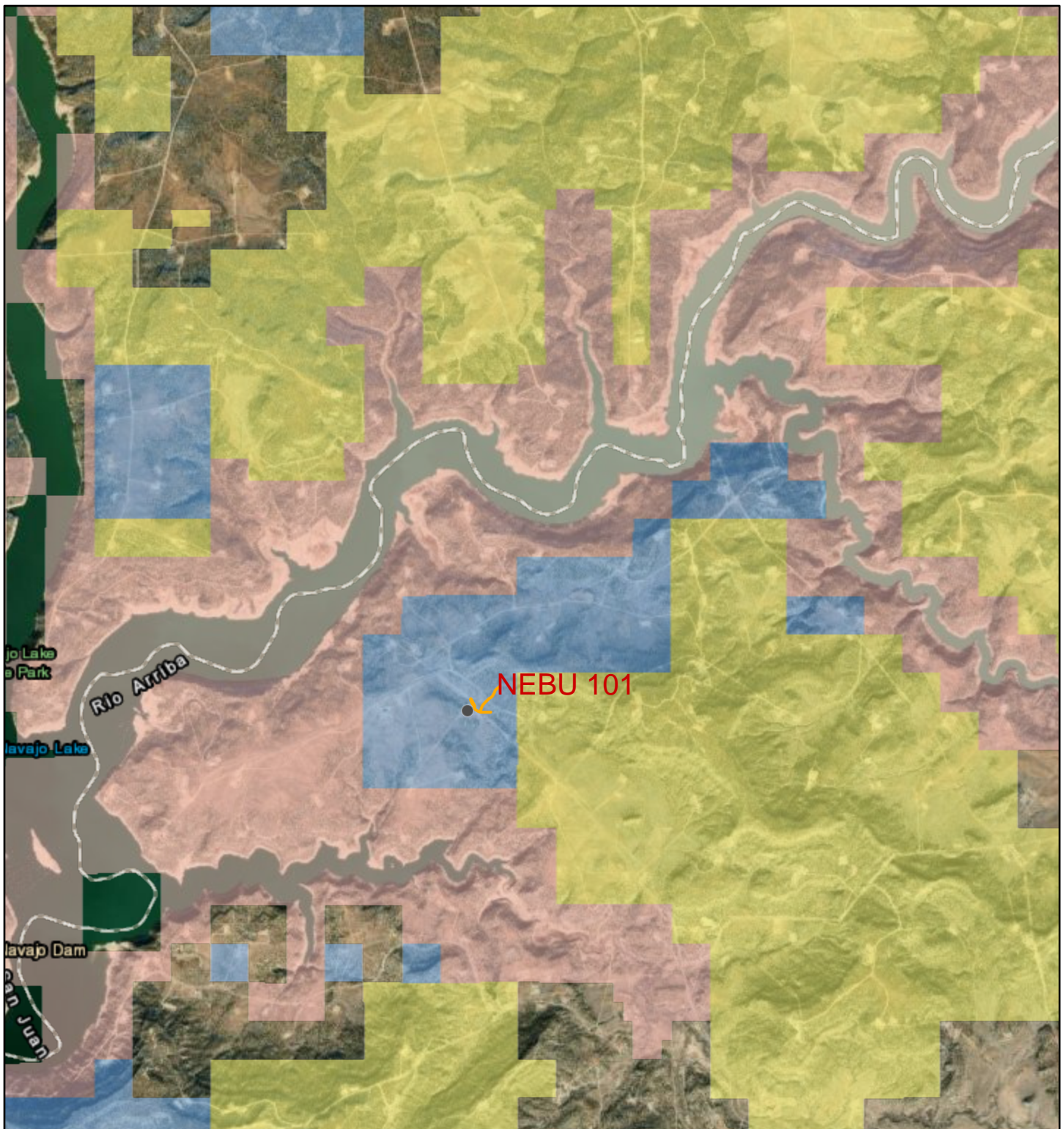
Sources: Esri, Airbus DS, USGS, NGA, NASA, CGIAR, N Robinson, NCEAS, NLS, OS, NMA, Geodatastyrelsen, Rijkswaterstaat, GSA, Geoland, FEMA,







## Active Mines in New Mexico

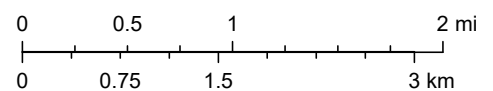


4/26/2022, 7:39:16 AM

1:72,224

## Land Ownership

Bureau of Land Management	Private Land
Bureau of Reclamation	State Game and Fish
Department of Agriculture	State Land
Department of Defense	State Parks
Department of Energy	Tribal
National Park Service	US Fish and Wildlife Service
	US Forest Service



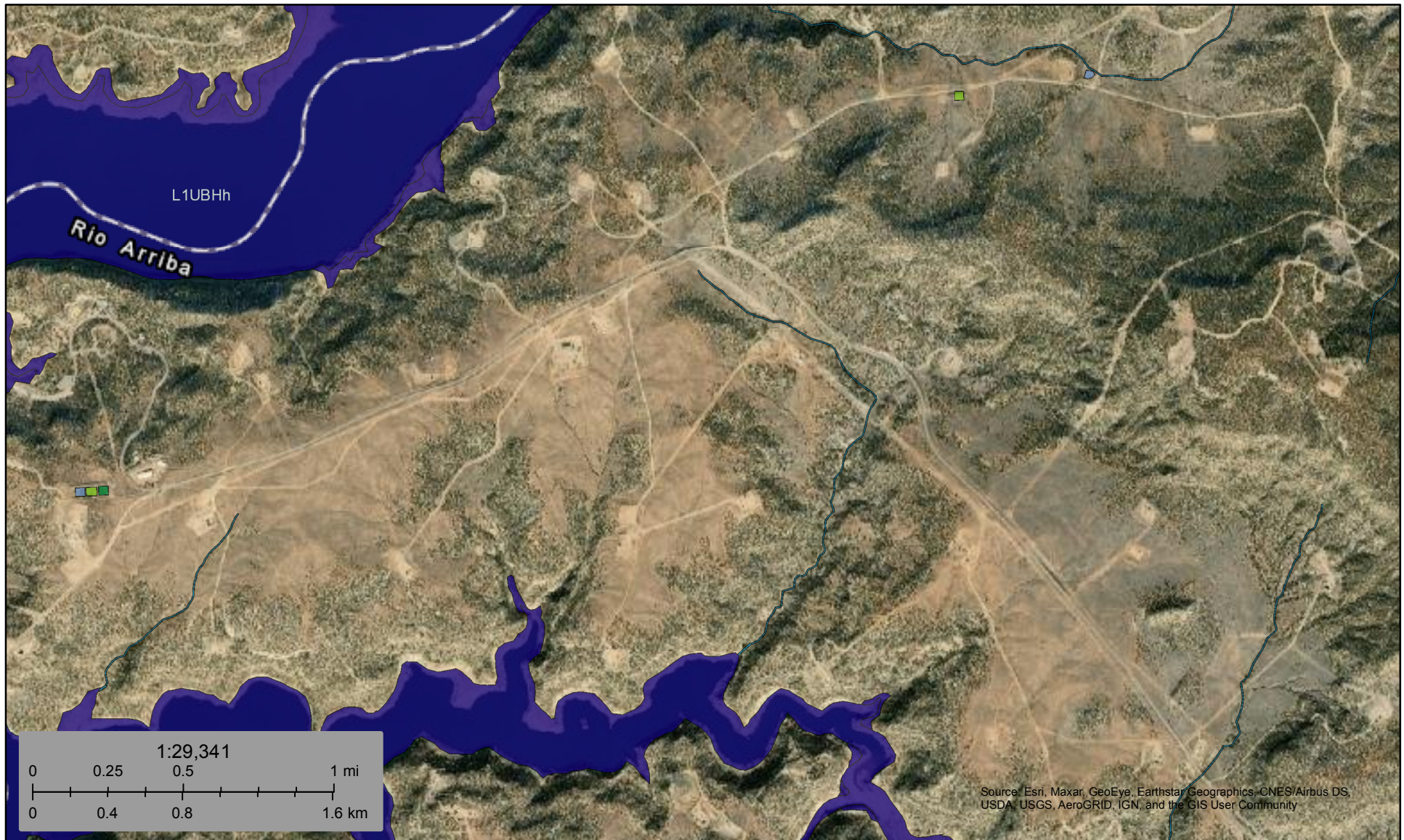
Source: Esri, Maxar, GeoEye, Earthstar Geographics, CNES/Airbus DS, USDA, USGS, AeroGRID, IGN, and the GIS User Community, U.S. Bureau of Land Management - New Mexico State Office, Esri, HERE, Garmin, (c) OpenStreetMap contributors, and the GIS user community

EMNRD MMD GIS Coordinator





2022.04.26 NEBU 101 wetland map



April 26, 2022

**Wetlands**

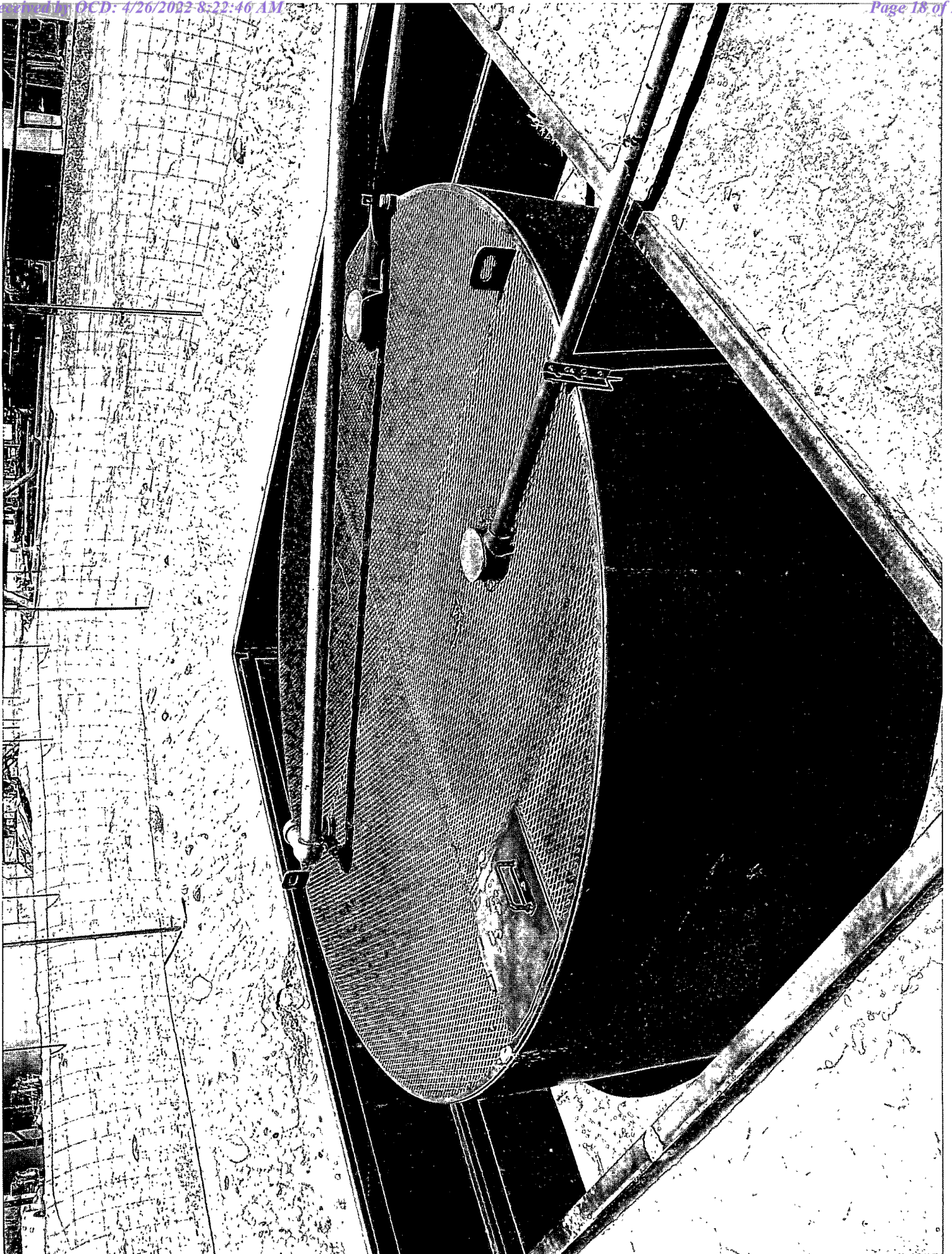
- Estuarine and Marine Deepwater
- Estuarine and Marine Wetland

- Freshwater Emergent Wetland
- Freshwater Forested/Shrub Wetland
- Freshwater Pond

- Lake
- Other
- Riverine

This map is for general reference only. The US Fish and Wildlife Service is not responsible for the accuracy or currentness of the base data shown on this map. All wetlands related data should be used in accordance with the layer metadata found on the Wetlands Mapper web site.





**SIMCOE LLC**  
SAN JUAN BASIN, NORTHWEST NEW MEXICO

**BELOW-GRADE TANK DESIGN AND CONSTRUCTION PLAN**

Pursuant to Rule 19.15.17.11 NMAC, SIMCOE LLC (SIMCOE) shall construct a below-grade tank (BGT) or modify an existing permitted BGT according to the following plan. Any deviations from this plan will be addressed on the New Mexico Oil Conservation Division's (NMOCD) form C-144 at the time of submittal.

**Design and Construction Plan**

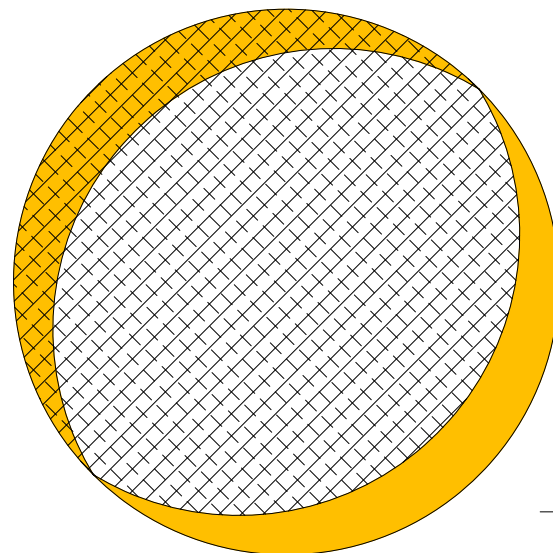
1. SIMCOE will design and construct a BGT which will be constructed to contain liquids and prevent contamination of fresh water and protect public health and the environment.
2. SIMCOE as the well operator shall install and maintain a well sign that adheres to 19.15.16.8 NMAC. The sign will be posted at the well site to address, at a minimum;
  - a. Well Number
  - b. Property name
  - c. Operators name
  - d. Location by footage, quarter-quarter section, township and range (or unit letter)
  - e. API number
  - f. Emergency contact information
3. SIMCOE will fence or enclose its BGTs in a manner that prevents unauthorized access and shall maintain its fence in good repair.
4. SIMCOE will fence or enclose a BGT located within 1,000 feet of a permanent residence, school, hospital, institution or church with, at a minimum a chain link security fence at least six (6) feet in height with at least two (2) strands of barbed wire at the top. SIMCOE will ensure that all gates associated with the fence are closed and locked when responsible personnel are not on-site.
5. SIMCOE is requesting NMOCD's approval for an alternative fence design that provides, at a minimum, equivalent protection to the design specified in Paragraph 3 of Subsection D of 19.15.17.11 NMAC for BGTs beyond the stated distance in paragraph 4 of this document. SIMCOE's proposed design for its BGTs will utilize 48" steel mesh field-fence (hog wire) with a metal or steel top rail. Perimeter T-post will be installed roughly every 10 feet.
6. SIMCOE will construct an expanded metal covering that completely covers the top of the BGT. The covering will be constructed such that it will prevent hazardous conditions to wildlife, including migratory birds
7. SIMCOE shall construct the BGT of materials that are resistant to produced water, any contained liquids, and damage from sunlight. SIMCOE's BGTs will be constructed of fiberglass or carbon steel that meets the requirements of ASTM A36.
8. SIMCOE's BGTs shall have a properly constructed earthen foundation consisting of a level base free of rocks, debris, sharp edges, or irregularities as to prevent punctures, cracks or indentations to the tank bottom as demonstrated on the design drawing.
9. SIMCOE will construct and operate the BGT to prevent surface water run-on by using both earthen berms and leaving a portion of the BGT above the original grade as demonstrated on the design drawing.
10. SIMCOE will construct and operate the BGT to prevent overflow and overfilling of the BGT. Overflow will be prevented by use of either a manual shut off valve or an electronic high fluid level detector that will automatically engage an electronic shut-off valve when a one (1) foot freeboard is reached. The high-level automatic alarm notifies well optimizers when liquid level has reached within a pre-set distance to the top of the BGT. The high-level alarm will trigger the automatic shutdown valve which will close in the well until the liquid level can be lowered.



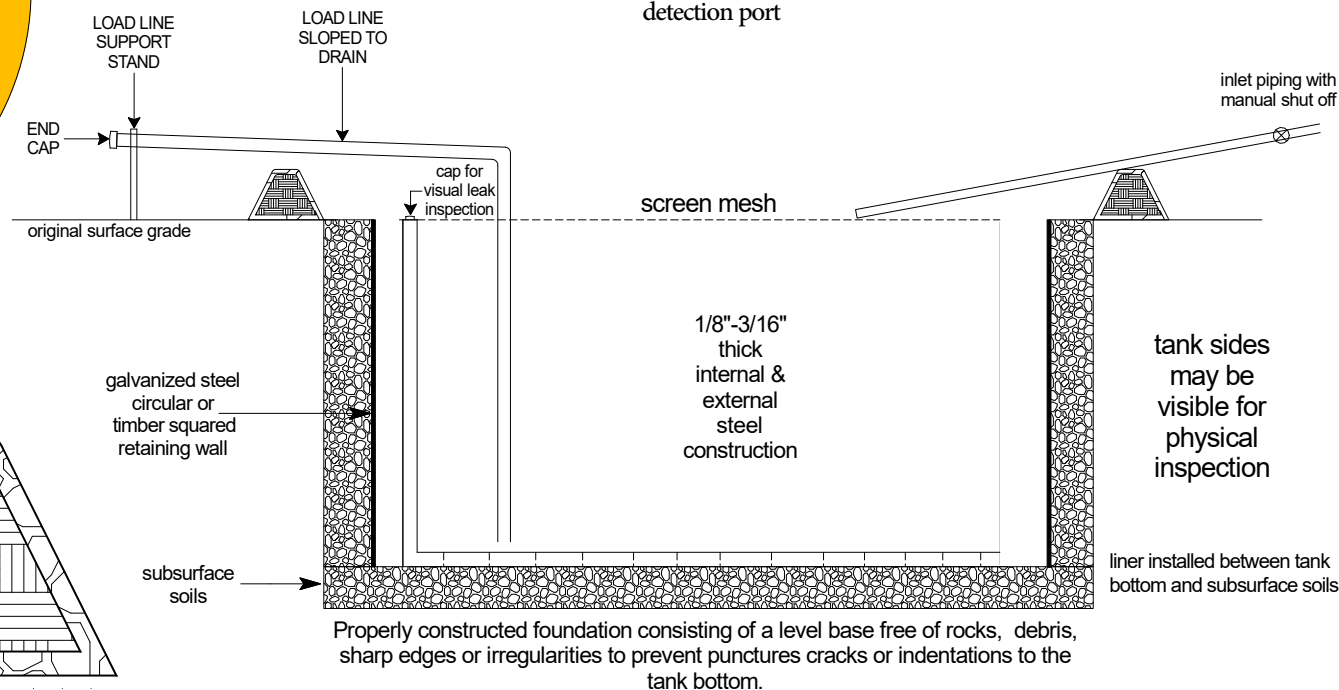
11. SIMCOE will construct and install a double-walled tank design per Subparagraph (b) of Paragraph (4) of Subsection I of 19.15.17.11 NMAC with a two (2) inch diameter leak detection port. The floor supports located in the annular space of the tank bottom will be channeled to allow outward movement of liquid between the walls. Leak detection will be monitored per SIMCOE's Operating and Maintenance Plan. The walls of the BGT will be constructed of fiberglass or carbon steel that meets the ASTM A36 standard. SIMCOE's BGT design will ensure containment of tank contents and protect underlying groundwater. The production equipment line drain is manual or automated drain that allows water level in production equipment (generally the separator) to be maintained within the equipment's operating parameters. The environmental drain is a manually operated drain that is used to drain liquids off of equipment. The tank drain is a manually operated drain, typically in the closed position that is used to rid the condensate tank of any water accumulation. The vent drain is a manually operated drain off the discharge of production equipment (usually the separator) and is used to blowdown the wellsite. The swab drain line is a manually operated drain originating between the wellhead and separator and is used during well workovers when large amounts of liquid are removed from the well and sent straight to the BGT.
12. SIMCOE owned and operated single walled BGTs constructed and installed prior to June 16, 2008 that has the side walls open for visual inspection and that does not meet all the requirements in Paragraphs (1) through (4) of Subsection I of 19.15.17.11 NMAC is not required to equip or retrofit the BGT to comply with Paragraphs (1) through (4) of Subsection I of 19.15.17.11 NMAC so long as it demonstrates integrity. If the existing BGT does not demonstrate integrity, SIMCOE shall promptly drain the BGT and remove it from service and comply with the closure requirements of 19.15.17.13 NMAC.
13. SIMCOE owned and operated single walled BGTs constructed and installed prior to June 16, 2008 and where any portion of the tank sidewall is below the ground surface and not visible shall equip or retrofit the BGT to comply with Paragraphs (1) through (4) of Subsection I of 19.15.17.11 NMAC, or close it, by June 16, 2013. If the existing BGT does not demonstrate integrity, SIMCOE shall promptly drain the BGT, remove it from service and comply with the closure requirements of 19.15.17.13 NMAC.
14. SIMCOE owned and operated double walled BGTs constructed and installed prior to June 16, 2008 and which does not meet all the requirements in Paragraphs (1) through (4) of Subsection I of 19.15.17.11 NMAC is not required to equip or retrofit the BGT to comply with Paragraphs (1) through (4) of Subsection I of 19.15.17.11 NMAC so long as it demonstrates integrity. If the existing BGT does not demonstrate integrity, SIMCOE shall promptly drain the BGT, remove it from service and comply with the closure requirements of 19.15.17.13 NMAC.
15. The general specifications for the design and construction of the BGT have been provided in the attached SIMCOE design and construction schematic.

# SINGLE WALLED BELOW- GRADE TANK (BGT)

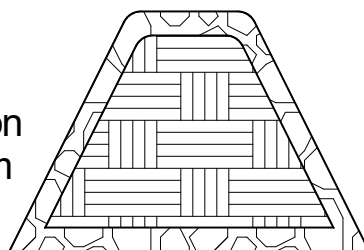
Rule 19.15.17.11 I (4b) NMAC



80 bbl steel tank: single wall /  
double bottom with leak  
detection port



overflow & run-on  
prevention berm



Schematic is for demonstrative purposes only and is not intended for final specification design. Details into requirements should be reference within the Design and Construction (D & C) Plan submitted or any manufacturer's attachment to the D & C Plan.

Date Drawn: 11/11/2020  
Drawn By: NJV  
Modified By: KGS 1/28/22  
Filename: 45 bbl BGT Schematic.SKF

**SIMCOE LLC**  
SAN JUAN BASIN, NORTHWEST NEW MEXICO

**BELOW-GRADE TANK OPERATING AND MAINTENANCE PLAN**

Pursuant to Rule 19.15.17.12 NMAC, SIMCOE LLC (SIMCOE) shall maintain and operate a below-grade tank (BGT) by following the plan shown below. Deviations from this plan will be addressed with a submittal to the New Mexico Oil Conservation Division (NMOCD) using form C-144 at the time of the BGT registration or modification to an existing BGT registration.

**Operating and Maintenance Plan**

1. SIMCOE's BGTs will be operated to contain liquids and solids. SIMCOE will maintain the integrity of the BGT and secondary containment system as to prevent impacts to fresh water and to protect public health and the environment. SIMCOE will use automated high fluid level alarms and automated shut-off valves to ensure that liquids are contained within the vessel and that the vessel does not overflow. These alarms and shut-off valves will be consistent with those demonstrated in the design plan.
2. SIMCOE will not knowingly discharge to or store any hazardous waste in a BGT.
3. If a BGT develops a leak below the liquid surface, SIMCOE shall remove all liquid above the damage or leak within 48 hours of discovery, notify the appropriate division office pursuant to 19.15.29 NMAC and repair the damage or replace the BGT as applicable.
4. SIMCOE will adhere to Subsection D of 19.15.17.12 NMAC. The requirements are as follows;
  - a. SIMCOE shall not allow a below-grade tank to overflow or allow surface water run-on to enter the BGT.
  - b. SIMCOE shall remove any measurable layer of oil from the fluid surface of a BGT.
  - c. SIMCOE shall inspect the BGT for leakage and damage at least monthly and will document the integrity of each tank at least annually and maintain record of the integrity for five years.
  - d. SIMCOE shall maintain adequate freeboard to prevent overtopping of the below-grade tank.
  - e. If SIMCOE discovers that the BGT tank does not demonstrate integrity or that the BGT develops any of the conditions identified in Paragraph (5) of Subsection A of 19.15.17.12 NMAC, SIMCOE shall repair the damage or close the existing BGT pursuant to the closure requirements of 19.15.17.13 NMAC.
  - f. If any of SIMCOE's BGTs are equipped or retrofitted to comply with Paragraphs (1) through (4) of Subsection I of 19.15.17.11 NMAC, then SIMCOE shall visually inspect the area beneath the BGT during the retrofit and document any areas that are wet, discolored or showing other evidence of a release on form C-141. SIMCOE will attempt to measure and report to the division the concentration of contaminants in the wet or discolored soil with respect to the standards set forth in Table I of 19.15.17.13 NMAC. If there is no wet or discolored soil or if the concentration of contaminants in the wet or discolored soil is less than the standard set forth in Table I of 19.15.17.13 NMAC, then SIMCOE shall proceed with the closure requirements of 19.15.17.13 NMAC prior to initiating the retrofit or replacement.

SIMCOE LLC (Previously BP America)  
SAN JUAN BASIN, NORTHWEST NEW MEXICO

**Below-Grade Tank Closure Plan**

This plan will address the standard protocols and procedures for closure of below-grade tanks (BGTs) on this SIMCOE, LLC well sites. As stipulated in Paragraph A of 19.15.17.13 NMAC, SIMCOE, LLC shall close a BGT within the time periods provided in 19.15.17.13 NMAC, or by an earlier date that the New Mexico Oil Conservation Division (NMOCD) requires because of imminent danger to fresh water, public health, safety, or the environment. If deviations from this plan are necessary, any specific changes will be included on form C-144 and approved by the NMOCD. SIMCOE, LLC shall close an existing BGT that does not meet the requirements of Paragraphs (1) through (4) of Subsection I of 19.15.17.11 NMAC or is not included in Paragraph (5) of Subsection I of 19.15.17.11 NMAC within five years after June 16, 2008, if not retrofit with a BGT that complies with the SIMCOE, LLC NMOCD approved BGT design attached to the SIMCOE, LLC Design and Construction Plan. SIMCOE, LLC shall close an existing BGT that does not meet the requirements of Paragraphs (1) through (4) of Subsection I of 19.15.17.11 NMAC, if not previously retrofitted to comply with the SIMCOE, LLC NMOCD approve BGT Design attached to the SIMCOE, LLC Design and Construction Plan, prior to any sale or change in operator pursuant to 19.15.9.9 NMAC. SIMCOE, LLC shall close the permitted BGT within 60 days of cessation of the BGTs operation or as required by the transitional provisions of Subsection B, D, or E of 19.15.17.17 NMAC.

**General Closure Plan**

1. SIMCOE, LLC shall notify the surface owner by certified mail that it plans to close a BGT. Evidence of mailing of the notice to the address of the surface owner shown in the county tax records demonstrates compliance with this requirement.
2. SIMCOE, LLC shall notify the division District III office verbally or by other means at least 72 hours, but not more than one (1) week, prior to any closure operation. The notice shall include the operator's name, and the location to be closed by unit letter, section, township, and range. If the BGT closure is associated with a particular well, then the notice shall also include the well's name, number, and API number.
3. SIMCOE, LLC shall remove liquids and sludge from the BGT prior to implementing a closure method and dispose of the liquids and sludge in a NMOCD's division-approved facility. The facilities to be utilized are:
  - a. JFJ Land farm, Permit NM-01-010(B) (Solids and Sludge)
  - b. Basin Disposal, Permit NM-01-0005 (Liquids)
  - c. Envirotech Inc Soil Remediation Facility, Permit NM-01-0011 (Solids and Sludge)
  - d. Simcoe, LLC Operated 13 GCU SWD # 1, API 30-045-28601 (Liquids)
  - e. Simcoe, LLC Operated GCU 259 SWD, API 30-045-20006(Liquids)
  - f. Simcoe, LLC Operated GCU 306 SWD, API30-045-24286 (Liquids)
  - g. Simcoe, LLC Operated GCU 307 SWD, API30-045-24248 (Liquids)
  - h. Simcoe, LLC Operated GCU 328 SWD, API 30-045-24735(Liquids)
  - i. Simcoe, LLC Operated Pritchard SWD #1, API 30-045-28351 (Liquids)

4. Simcoe, LLC shall remove the BGT and dispose of it in a NMOCD approved facility or recycle, reuse, or reclaim it in a manner that the NMOCD approves. If a liner is present and must be disposed of it will be cleaned by scraping any soils or other attached materials on the liner to a de minimus amount and disposed at a permitted solid waste facility, pursuant to Subparagraph (m) of Paragraph (1) of Subsection C of 19.15.35.8 NMAC. Documentation as to the final disposition of the removed BGT will be provided in the final closure report.
5. Simcoe, LLC shall remove any on-site equipment associated with a BGT unless the equipment is required for well production.
6. Simcoe, LLC shall sample the soils beneath the BGT to determine whether a release has occurred. Simcoe, LLC shall collect at a minimum: a five (5) point composite sample and analyze for BTEX, TPH and chlorides. The testing methods for those constituents are as follows.

<b>Table 1</b> <b>Closure Criteria for Soils Beneath Below-Grade Tanks</b>			
Depth below bottom of pit to groundwater less than 10,000 mg/l TDS	Constituent	Method*	Limit**
≤50 feet	Chloride	EPA 300.0	600 mg/kg
	TPH	EPA SW-846 Method 418.1	100 mg/kg
	BTEX	EPA SW-846 Method 8021B or 8260B	50 mg/kg
	Benzene	EPA SW-846 Method 8021B or 8015M	10 mg/kg
51 feet-100 feet	Chloride	EPA 300.0	10,000 mg/kg
	TPH	EPA SW-846 Method 418.1	2,500 mg/kg
	GRO+DRO	EPA SW-846 Method 8015M	1,000 mg/kg
	BTEX	EPA SW-846 Method 8021B or 8260B	50 mg/kg
	Benzene	EPA SW-846 Method 8021B or 8015M	10 mg/kg
> 100 feet	Chloride	EPA 300.0	20,000 mg/kg
	TPH	EPA SW-846 Method 418.1	2,500 mg/kg
	GRO+DRO	EPA SW-846 Method 8015M	1,000 mg/kg
	BTEX	EPA SW-846 Method 8021B or 8260B	50 mg/kg
	Benzene	EPA SW-846 Method 8021B or 8015M	10 mg/kg

Notes: mg/Kg = milligram per kilogram

BTEX = benzene, toluene, ethylbenzene, and total xylenes

TPH = total petroleum hydrocarbons

TDS = total dissolved solids.

\* - Or other test methods approved by the division

\*\* - Numerical limits or natural background level, whichever is greater

7. Simcoe, LLC shall notify the division District III office of its results on form C-141.



8. If it is found that a release has occurred, then Simcoe, LLC will comply with 19.15.30 NMAC and 19.15.29 NMAC, as appropriate.
9. If the sampling demonstrates that a release has not occurred or that any release does not exceed the concentrations specified above, then BP shall backfill the excavation, with compacted, non-waste containing, earthen material; construct a division-prescribed soil cover, re-contour and re-vegetate the location. The location will be reclaimed if it is not within the active process area.
10. Simcoe, LLC shall reclaim the BGT location, and all areas associated with the BGT including associated access roads to a safe and stable condition that blends with the surrounding undisturbed area. Simcoe, LLC shall substantially restore the impacted surface area to the condition that existed prior to oil and gas operations by placement of the soil cover as provided in Subsection H of 19.15.17.13 NMAC, re-contour the location and associated areas to a contour that approximates the original contour and blends with the surrounding topography and re-vegetate according to Subsection I of 19.15.17.13 NMAC. 11. The soil cover for closures where the BGT has been removed or remediated to the NMOCD's satisfaction shall consist of the background thickness of topsoil or one foot of suitable material to establish vegetation at the site, whichever is greater.
12. Simcoe, LLC shall seed the disturbed area the first growing season after closure of the BGT. Seeding will be conducted by drilling on the contour whenever practical or by other division-approved methods. Vegetative cover will be, at a minimum, 70% of the native perennial vegetative cover (un-affected by overgrazing, fire or other intrusion damaging to native vegetation), consisting of at least three native plant species, including at least one grass, but not including noxious weeds, and maintenance of that cover through two successive growing seasons. During the two growing seasons that prove viability, there shall be no artificial irrigation of the vegetation.
13. Simcoe, LLC shall seed, plant and re-seed pursuant to Paragraph (3) of Subsection I of 19.15.17.13 NMAC, until the location successfully achieves the required vegetative cover.
14. Pursuant to Paragraph (5) of Subsection I of 19.15.17.13 NMAC, Simcoe, LLC shall notify the NMOCD when it has seeded or planted and when it successfully achieves revegetation.
15. Within 60 days of closure completion, Simcoe, LLC shall submit a closure report on NMOCD's form C-144, and will include the following:
  - a. proof of closure notification (surface owner and NMOCD)
  - b. sampling analytical reports: information required by 19.15.17 NMAC.
  - c. disposal facility name and permit number
  - d. details on back-filling, capping, covering, and where applicable re-vegetation application rates and seeding techniques and
  - e. site reclamation, photo documentation. Disposal Facility Name and Permit Number
16. Simcoe, LLC shall certify that all information in the report and attachments is accurate, truthful, and compliant with all applicable closure requirements and conditions specified in the approved closure plan.

**District I**

1625 N. French Dr., Hobbs, NM 88240  
 Phone:(575) 393-6161 Fax:(575) 393-0720

**District II**

811 S. First St., Artesia, NM 88210  
 Phone:(575) 748-1283 Fax:(575) 748-9720

**District III**

1000 Rio Brazos Rd., Aztec, NM 87410  
 Phone:(505) 334-6178 Fax:(505) 334-6170

**District IV**

1220 S. St Francis Dr., Santa Fe, NM 87505  
 Phone:(505) 476-3470 Fax:(505) 476-3462

**State of New Mexico**  
**Energy, Minerals and Natural Resources**  
**Oil Conservation Division**  
**1220 S. St Francis Dr.**  
**Santa Fe, NM 87505**

CONDITIONS

Action 101469

**CONDITIONS**

Operator: SIMCOE LLC 1199 Main Ave., Suite 101 Durango, CO 81301	OGRID: 329736
	Action Number: 101469
	Action Type: [C-144] Below Grade Tank Plan (C-144B)

**CONDITIONS**

Created By	Condition	Condition Date
vvenegas	NMOCD has reviewed and approved the C-144 modification submitted by [329736] SIMCOE for BGT associate with API# 30-039-07893 with the following conditions: 19.15.17.12.D.(6) The operator of a below-grade tank who equips or retrofits the existing tank to comply with Paragraphs (1) through (4) Subsection I of 19.15.17.11 NMAC shall visually inspect the area beneath the below-grade tank during the retrofit and document any areas that are wet, discolored or showing other evidence of a release on form C-141. The operator shall measure and report to the division the concentration of contaminants in the wet or discolored soil with respect to the standards set forth in Table I of 19.15.17.13 NMAC. If there is no wet or discolored soil or if the concentration of contaminants in the wet or discolored soil is less than the standard set forth in Table I of 19.15.17.13 NMAC, then the operator shall proceed with the closure requirements of 19.15.17.13 NMAC prior to initiating the retrofit or replace	5/20/2022