

Office
 District I – (575) 393-6161
 1625 N. French Dr., Hobbs, NM 88240
 District II – (575) 748-1283
 811 S. First St., Artesia, NM 88210
 District III – (505) 334-6178
 1000 Rio Brazos Rd., Aztec, NM 87410
 District IV – (505) 476-3460
 1220 S. St. Francis Dr., Santa Fe, NM
 87505

State of New Mexico
 Energy, Minerals and Natural Resources

Form C-103
 Revised July 18, 2013

OIL CONSERVATION DIVISION
 1220 South St. Francis Dr.
 Santa Fe, NM 87505

| | | |
|---------------------------------------------------------------------------------------------------------------------------------------------------------------------------------------------------------------------------|--|-----------------------------------------------------------------------------------------------------|
| SUNDRY NOTICES AND REPORTS ON WELLS (DO NOT USE THIS FORM FOR PROPOSALS TO DRILL OR TO DEEPEN OR PLUG BACK TO A DIFFERENT RESERVOIR. USE "APPLICATION FOR PERMIT" (FORM C-101) FOR SUCH PROPOSALS.) | | WELL API NO. 30-045-07401 |
| 1. Type of Well: Oil Well <input type="checkbox"/> Gas Well <input checked="" type="checkbox"/> Other | | 5. Indicate Type of Lease STATE <input checked="" type="checkbox"/> FEE <input type="checkbox"/> |
| 2. Name of Operator Hilcorp Energy Company | | 6. State Oil & Gas Lease No. B-11017-60 |
| 3. Address of Operator 382 Road 3100, Aztec, NM 87410 | | 7. Lease Name or Unit Agreement Name State Com A |
| 4. Well Location Unit Letter <u>N</u> : <u>800</u> feet from the <u>South</u> line and <u>1695</u> feet from the <u>West</u> line Section <u>16</u> Township <u>28N</u> Range <u>9W</u> NMPM County <u>San Juan</u> | | 8. Well Number <u>2</u> |
| 11. Elevation (Show whether DR, RKB, RT, GR, etc.) 6268' GL | | 9. OGRID Number 372171 |
| | | 10. Pool name or Wildcat Blanco Mesaverde / Basin Dakota |

12. Check Appropriate Box to Indicate Nature of Notice, Report or Other Data

| NOTICE OF INTENTION TO: | | SUBSEQUENT REPORT OF: | |
|-----------------------------------------------------------------|-------------------------------------------|--------------------------------------------------|------------------------------------------|
| PERFORM REMEDIAL WORK <input type="checkbox"/> | PLUG AND ABANDON <input type="checkbox"/> | REMEDIAL WORK <input type="checkbox"/> | ALTERING CASING <input type="checkbox"/> |
| TEMPORARILY ABANDON <input type="checkbox"/> | CHANGE PLANS <input type="checkbox"/> | COMMENCE DRILLING OPNS. <input type="checkbox"/> | P AND A <input type="checkbox"/> |
| PULL OR ALTER CASING <input type="checkbox"/> | MULTIPLE COMPL <input type="checkbox"/> | CASING/CEMENT JOB <input type="checkbox"/> | |
| DOWNHOLE COMMINGLE <input type="checkbox"/> | | | |
| CLOSED-LOOP SYSTEM <input type="checkbox"/> | | | |
| OTHER: <input checked="" type="checkbox"/> RECOMPLETE - REVISED | | OTHER: <input type="checkbox"/> | |

13. Describe proposed or completed operations. (Clearly state all pertinent details, and give pertinent dates, including estimated date of starting any proposed work). SEE RULE 19.15.7.14 NMAC. For Multiple Completions: Attach wellbore diagram of proposed completion or recompletion.

REVISED: Hilcorp Energy Company requests permission to revise the previously submitted recomplete procedure to include plugging back the Dakota formation and additional cement work. Please see the attached revised procedure.

Spud Date:

Rig Release Date:

I hereby certify that the information above is true and complete to the best of my knowledge and belief.

SIGNATURE Kandis Roland TITLE: Operations/Regulatory Technician-Sr. DATE 5/24/2022

Type or print name Kandis Roland E-mail address: kroland@hilcorp.com PHONE: 713-757-5246

For State Use Only

APPROVED BY: Monica Kuehling TITLE Deputy Oil and Gas Inspector DATE 5/24/2022

Conditions of Approval (if any):

State Com A2

N – 16 – 28N – 09W 800 FSL 1695 FWL

API#: 3004507401

Mesa Verde Recompletion Procedure

05/24/2022

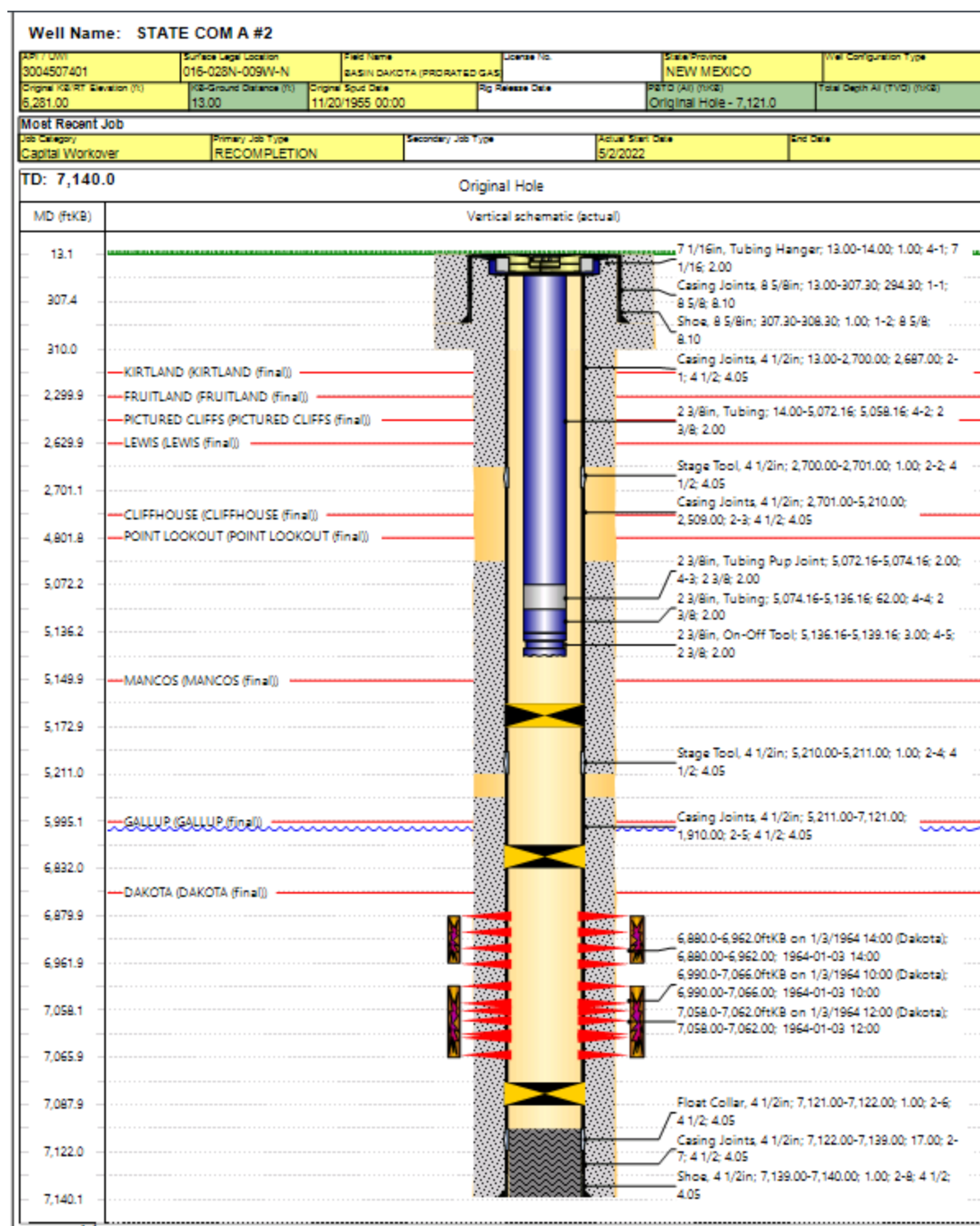
Prior work:

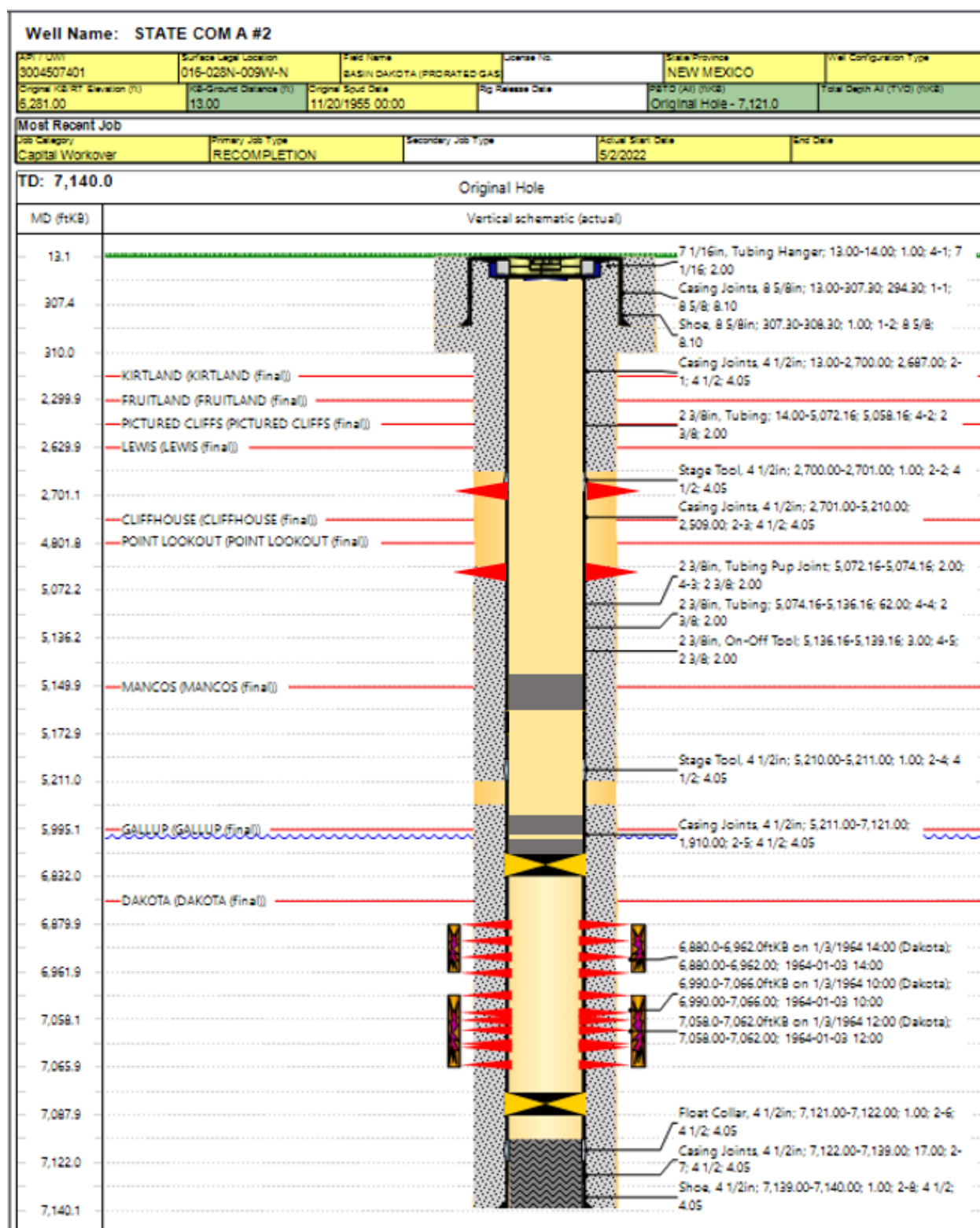
1. Pulled tubing and set CIBP at 7,086'
2. Set CIBP below Mesaverde at 6,830' and pressure tested wellbore to frac pressure (no good)
3. Isolate two leaking intervals from 5,223'-5,285' (inside Mancos interval we intend to abandon) and from 2,713'-2,744'
4. Set RBP at 5173', landed tubing at 5136'

Procedure:

1. MIRU Workover rig. ND wellhead, NU BOP.
2. RIH and latch RBP, POOH with RBP standing back 2-3/8' tubing
3. RIH to CIBP with 2-3/8"
4. Spot 50' (TOC at 6,780') of Type III cement to permanently abandon the Dakota perms.
5. Circulate plug fluid to 6045'
6. Spot 150' of cement from 6045' to 5895' to cover Gallup top
7. Circulate plug fluid to 5200'
8. Spot 150' of cement from 5200' to 5050' to cover Mancos top. WOC and tag cement plug to verify top. (HIC isolated 5223-5285'). DV tool at 5210' provides outside cement coverage per CBL ran 05/06/2022 by Basin Well Logging.
9. Circulate fluid if needed to fill wellbore for perforating.
10. RU E-line and MU DP charges. RIH and perf at $\pm 4,800'$ and $\pm 2,730'$. RDMO E-Line.
11. PU test packer and RIH to $\pm 4,700'$. Attempt to establish injection into perforation at 4800' with water. Increase pressure in 500 PSI increments if perforations will not take fluid, do not exceed 2000 PSI.
 - a. If injection is successful, monitor returns up TCA for signs of drilling mud/contaminated cement to estimate volume behind casing.
 - b. If unable to circulate but holes take fluid, pump a total of 30 bbl. or for 30 minutes, whichever is reached first
 - c. If injection is tight, spot 200 gals of 15% HCl, no foamer, to improve communication
 - d. Flush acid if needed with 2% KCL and flush to perf (20 bbl.)

12. POOH with test packer, and PU CICR
13. RIH and set retainer at 4700', function test retainer and prep to squeeze
 - a. Pump Type III cement blend at 12.5 ppg from Drake.
14. Squeeze cement below retainer, do not exceed 1500 PSI STP
 - a. Cement volume to be determined from injection test, will not exceed 60 bbl.
15. Sting out of retainer, reverse circulate bottoms up.
16. POOH with stinger and stand back tubing.
17. WOC for 72 hours
18. MIRU WL to run CBL from CICR at 4700' to 2700'
19. Evaluate CBL and submit to NMOCD with updated NOI for forward work.





District I

1625 N. French Dr., Hobbs, NM 88240
Phone:(575) 393-6161 Fax:(575) 393-0720

District II

811 S. First St., Artesia, NM 88210
Phone:(575) 748-1283 Fax:(575) 748-9720

District III

1000 Rio Brazos Rd., Aztec, NM 87410
Phone:(505) 334-6178 Fax:(505) 334-6170

District IV

1220 S. St Francis Dr., Santa Fe, NM 87505
Phone:(505) 476-3470 Fax:(505) 476-3462

State of New Mexico
Energy, Minerals and Natural Resources
Oil Conservation Division
1220 S. St Francis Dr.
Santa Fe, NM 87505

CONDITIONS

Action 109981

CONDITIONS

| | |
|--------------------------------------------------------------------------------|---------------------------------------------------|
| Operator: HILCORP ENERGY COMPANY 1111 Travis Street Houston, TX 77002 | OGRID: 372171 |
| | Action Number: 109981 |
| | Action Type: [C-103] NOI Recompletion (C-103E) |

CONDITIONS

| Created By | Condition | Condition Date |
|------------|--------------------------------------------------------------------------------------------------------------------------------------------------------------------------------------------------------------------------------------------------------------------------------------------------------------------------------------------------------------------------------------------------------------------------------------------------------------------------------------------------------------------------------------------------------------------------------------------------------|----------------|
| mkuehling | With holes above you a casing test will not be achieved - WOC on all plugs -the Dakota plug needs to be ran from top of CIBP at 6830 to 6680 reversing out at 6045 WOC - approved - Gallup balanced plug from 6045 to 5895 reversing out at 5200 WOC - approved - With holes below Mancos top - cement retainer is advised- plug 5200 to 5050 WOC - approved - perforating +/-4700 and +/-2730 approved Contact this office with any problems that may arise - monitor bradenhead pressure - Pressure test required with witness from this office from top of Mancos plug to surface when drilled out. | 5/24/2022 |