

Office
 District I – (575) 393-6161
 1625 N. French Dr., Hobbs, NM 88240
 District II – (575) 748-1283
 811 S. First St., Artesia, NM 88210
 District III – (505) 334-6178
 1000 Rio Brazos Rd., Aztec, NM 87410
 District IV – (505) 476-3460
 1220 S. St. Francis Dr., Santa Fe, NM
 87505

State of New Mexico
 Energy, Minerals and Natural Resources

Form C-103
 Revised July 18, 2013

OIL CONSERVATION DIVISION
 1220 South St. Francis Dr.
 Santa Fe, NM 87505

WELL API NO. 30-025-30749
5. Indicate Type of Lease STATE <input type="checkbox"/> FEE <input checked="" type="checkbox"/>
6. State Oil & Gas Lease No.
7. Lease Name or Unit Agreement Name WARREN 3
8. Well Number 2
9. OGRID Number 7377
10. Pool name or Wildcat FAIRVIEW MILLS; WOLFCAMP (GAS)

SUNDRY NOTICES AND REPORTS ON WELLS (DO NOT USE THIS FORM FOR PROPOSALS TO DRILL OR TO DEEPEN OR PLUG BACK TO A DIFFERENT RESERVOIR. USE "APPLICATION FOR PERMIT" (FORM C-101) FOR SUCH PROPOSALS.)	
1. Type of Well: Oil Well <input type="checkbox"/> Gas Well <input checked="" type="checkbox"/> Other	
2. Name of Operator EOG RESOURCES INC	
3. Address of Operator PO BOX 2267 MIDLAND, TX 79702	
4. Well Location Unit Letter K : 1980 feet from the SOUTH line and 1980 feet from the WEST line Section 3 Township 25S Range 34E NMPM County LEA	
11. Elevation (Show whether DR, RKB, RT, GR, etc.) 3357' GR	

12. Check Appropriate Box to Indicate Nature of Notice, Report or Other Data

NOTICE OF INTENTION TO:		SUBSEQUENT REPORT OF:	
PERFORM REMEDIAL WORK <input type="checkbox"/>	PLUG AND ABANDON <input checked="" type="checkbox"/>	REMEDIAL WORK <input type="checkbox"/>	ALTERING CASING <input type="checkbox"/>
TEMPORARILY ABANDON <input type="checkbox"/>	CHANGE PLANS <input type="checkbox"/>	COMMENCE DRILLING OPNS. <input type="checkbox"/>	P AND A <input type="checkbox"/>
PULL OR ALTER CASING <input type="checkbox"/>	MULTIPLE COMPL <input type="checkbox"/>	CASING/CEMENT JOB <input type="checkbox"/>	
DOWNHOLE COMMINGLE <input type="checkbox"/>			
CLOSED-LOOP SYSTEM <input type="checkbox"/>			
OTHER: <input type="checkbox"/>		OTHER: <input type="checkbox"/>	

13. Describe proposed or completed operations. (Clearly state all pertinent details, and give pertinent dates, including estimated date of starting any proposed work). SEE RULE 19.15.7.14 NMAC. For Multiple Completions: Attach wellbore diagram of proposed completion or recompletion.

EOG proposes to P&A this well using the attached procedure.

4" diameter 4' tall Above Ground Marker

**SEE ATTACHED CONDITIONS
OF APPROVAL**

Spud Date:

12/08/1992

Rig Release Date:

I hereby certify that the information above is true and complete to the best of my knowledge and belief.

SIGNATURE KAY MADDOX TITLE SENIOR REGULATORY SPECIALIST DATE 05/20/2022

Type or print name Kay Maddox E-mail address: kay_maddox@eogresources.com PHONE: 432-638-8475

For State Use Only

APPROVED BY: Kerry Fortner TITLE Compliance Officer A DATE 5/25/22

Conditions of Approval (if any):
575-263-6633



Warren 3 #2
API # 30-025-30749
1980' FSL & 1980' FWL – Sec. 3-25S-34E
Lea County, New Mexico

AFE # 117974

Executive Summary:

Plug and abandon well.

TD: 15,347' PBDT: 14,415 GL: 3,357' KB:

Surface Casing: 16" 65# at 667'. Cemented with 810 sx. Cement circulated.
1st Intermediate: 10 3/4" 40.5#, 45.5#, 51# at 5,209'. Cemented with 3,825 sx. Cement circulated.
2nd Intermediate: 7 5/8" 33.7#, 29.7#, 39# at 13,290'. Cemented with 1,210 sx. CTOC at 7,779'.
Production Liner: 4 1/2" 15.10# at 12,970'-15,347'. Cemented with 400 sx.
Producing Interval: WFMP perms at 13,498-13,511'.

P&A Procedure:

1. Notify Regulatory Agency 24 hours prior to commencing work.
2. MIRU well service unit and all necessary safety equipment. Kill the well, ND tree and NU BOP, POOH laying down 2 7/8" production tubing.
3. Pick up 2 7/8" work string and TIH with 4-1/2" CIBP to 13,398'. Set CIBP, circulate plugging mud, then spot 25 sx Class "H" cement on top of CIBP from 13,398'-13,108' (this will cover perms and 7 5/8" csg shoe). Pick up, reverse tubing clean, WOC and tag.
4. Pick up to 13,020' and spot 45 sx Class "H" cement plug from 13,020'-12,790' (this will cover 4-1/2" liner top). Pick up, reverse tubing clean, WOC and tag.
5. Pick up to 12,256' and spot 50 sx Class "H" cement plug from 12,256'-12,036' (this will cover top of Wolfcamp). Pick up and reverse tubing clean (no tag required).
6. Pick up to 9,294' and spot 45 sx Class "H" cement plug from 9,294'-9,104' (this will cover top of Bone Spring). Pick up, reverse tubing clean and POOH (no tag required).
7. RU WL to RIH and perf 7 5/8" csg at 7,314'. POOH with WL.
8. TIH with 7 5/8" packer to 7,144', set packer and squeeze 65 sx Class "H" cement plug from 7,314'-7,144' (this is a spacer plug). Release packer, pick up, reverse tubing clean and POOH.
9. RU WL to RIH and perf 7 5/8" casing at 5,359'. POOH with WL.
10. TIH with 7 5/8" packer to 5,109', set packer and squeeze 85 sx Class "C" cement plug from 5,359'-5,109' (this will cover top of Delaware and 10 3/4" csg shoe). Release packer, pick up, reverse tbg clean and POOH to WOC.
11. RU WL to RIH to tag TOC then perf 7 5/8" casing at 3,725'. POOH w/ WL.



12. TIH with 7-5/8" packer to 3,595', set packer and squeeze 50 sx Class "C" cement plug from 3,725'-3,595' (this will cover base of salt). Release packer, pick up, reverse tbg clean and POOH to WOC.
13. RU WL to RIH to tag TOC then perf 7 7/8" casing at 1,634'. POOH w/ WL.
14. TIH with 7 7/8" packer to 1,524', set packer and squeeze 45 sx Class "C" cement plug from 1,634'-1,524' (this will cover top of salt). Release packer, pick up, reverse tbg clean and POOH to WOC.
15. RU WL to RIH to tag TOC then perf 7 7/8" casing at 717'.
16. Circulate 265 sx Class "C" cmt plug from 717'-surface.
17. Dig out cellar, cut off wellhead and verify cement behind all casing strings.
18. Install dry hole marker, clean location and RDMO.

Production Engineer:

A handwritten signature in black ink, appearing to read "Brice A. Letcher".

Date: 5/17/2022

Brice A. Letcher, P.E.

Well Name: Warren 3 #2
Location: 1980' FSL & 1980' FWL Sec. 3-25S-34E
County: Lea, NM
Lat/Long: 32.1576881,-103.4598846 NAD83
API #: 30-025-30749
Spud Date: 12/8/92
Compl. Date: 12/13/92



Current Wellbore Diagram:

KB:

GL: 3,357'

20" Hole

16" 65# @ 667'

Cmt w/ 810 sx, Cmt circulated

14-3/4" Hole

10-3/4" 40.5#, 45.5# & 51# @ 5,209'
Cmt w/ 3,825 sx, Cmt circulated

9-1/2" Hole

CTOC @ 7,779'

4-1/2" Liner Hanger @ 12,970'

7-5/8" 33.7#, 29.7# & 39# @ 13,290'
Cmt w/ 1210 sx, CTOC @ 7,779'

4-1/2" 15# P-110 @ 15,347'
Cmt w/ 400 sx

PBTD @ 14,415'
TD @ 15,347'

2-7/8" TBG set @ 13,350'

Wolfcamp perms: 13,498'-13,511'

CIBP w/ 35 sx cmt @ 14,450'

Morrow perms: 14,818'-14,838'

Formation Tops

Delaware	5,309
Bone Spring Lm	9,244
BS 3rd Sand	11,888
Wolfcamp	12,206
Strawn	13,680
Atoka	13,772
Morrow Clastic	14,578

Not to Scale
By: BL 5/17/22

Well Name: Warren 3 #2
Location: 1980' FSL & 1980' FWL Sec. 3-25S-34E
County: Lea, NM
Lat/Long: 32.1576881, -103.4598846 NAD83
API #: 30-025-30749
Spud Date: 12/8/92
Compl. Date: 12/13/92

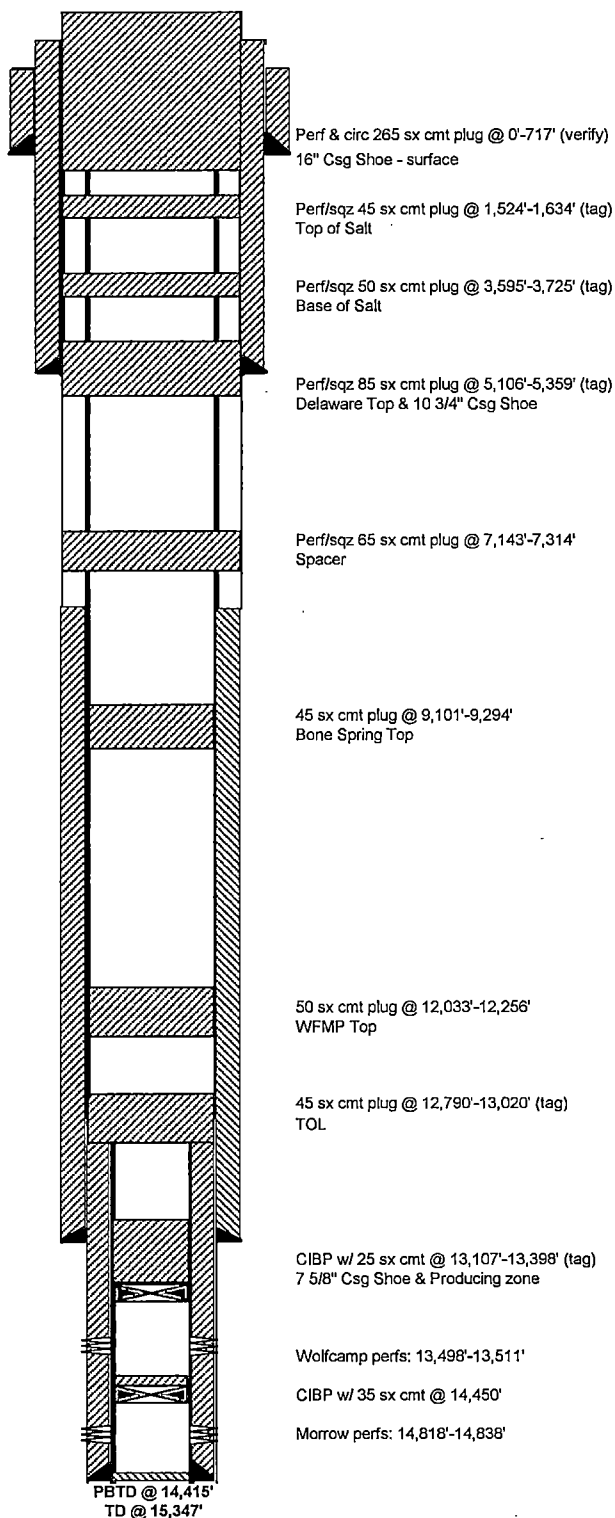


Proposed Wellbore Diagram:

KB:

GL: 3,357'

20" Hole
 16" 65# @ 667'
 Cmt w/ 810 sx, Cmt circulated
 14-3/4" Hole
 10-3/4" 40.5#, 45.5# & 51# @ 5,209'
 Cmt w/ 3,825 sx, Cmt circulated
 9-1/2" Hole
 CTOC @ 7,779'
 4-1/2" Liner Hanger @ 12,970'
 7-5/8" 33.7#, 29.7# & 39# @ 13,290'
 Cmt w/ 1210 sx, CTOC @ 7,779'
 4-1/2" 15# P-110 @ 15,347'
 Cmt w/ 400 sx



Formation Tops

Delaware	5,309
Bone Spring Lm	9,244
BS 3rd Sand	11,888
Wolfcamp	12,206
Strawn	13,680
Atoka	13,772
Morrow Clastic	14,578

Not to Scale
 By: BL 5/17/22



Emergency Contact Information

In the event of an accident/safety incident involving EOG employees or contract personnel contact:

Name	Title	Cell	Office
Brian Chandler	Safety Manager	817-239-0251	817-806-0486
Ashley Mayfield	Sr. Safety Rep	432-258-7998	432-686-3662

In the event of a spill or environmental release contact:

Name	Title	Cell	Office
Doug Lowrie	Environmental Manager	432-425-6923	432-686-3755

Production Department Contacts:

Name	Title	Cell	Office
Mario Arevalo	NM Production Superintendent	940-231-8118	575-738-0397
Zack Jones	Production Foreman	432-488-8556	
Casey Rodriguez	Lead Lease Operator	432-661-4226	
Brice Letcher	Production Engineer	575-748-5021	
Clinton Cox	Production Manager	432-894-4920	432-686-3614
Ron Willett	Production Advisor	432-230-2135	432-686-3775
Tim Singley	Production Superintendent	601-731-4718	432-686-6900

Completions Department Contacts:

Name	Title	Cell	Office
Alex Richter	Completions Engineer Advisor	432-634-9148	432-686-3638

Police/Fire/Hospital Contacts

Fire	911
Sheriff (Eddy County)	575-887-7551
Sheriff (Lea County)	575-396-3611
Hospital – Carlsbad Medical Center (Carlsbad, NM)	575-887-4100
Hospital – Lea Regional Medical Center (Hobbs, NM)	575-492-5000
Hospital – Nor-Lea General Hospital (Lovington, NM)	575-396-6611
Hospital – Winkler County Memorial Hospital (Kermit, TX)	432-586-5864

**CONDITIONS OF APPROVAL
FOR PLUGGING AND ABANDONMENT
OCD - Southern District**

The following is a guide or checklist in preparation of a plugging program, this is not all inclusive and care must be exercised in establishing special plugging programs in unique and unusual cases, Notify NMOCD District Office I (Hobbs) at (575)-263-6633 at least 24 hours before beginning work. After MIRU rig will remain on well until it is plugged to surface. OCD is to be notified before rig down.

Company representative will be on location during plugging procedures.

1. A notice of intent to plug and abandon a wellbore is required to be approved before plugging operations are conducted. A cement evaluation tool is required in order to ensure isolation of producing formations, protection of water and correlative rights. A cement bond log or other accepted cement evaluation tool is to be provided to the division for evaluation if one has not been previously run or if the well did not have cement circulated to surface during the original casing cementing job or subsequent cementing jobs. Insure all bradenheads have been exposed, identified and valves are operational prior to rig up.
2. Closed loop system is to be used for entire plugging operation. Upon completion, contents of steel pits are to be hauled to a permitted disposal location.
3. Trucking companies being used to haul oilfield waste fluids to a disposal - commercial or private- shall have an approved NMOCD C-133 permit. A copy of this permit shall be available in each truck used to haul waste products. It is the responsibility of the operator as well as the contractor, to verify that this permit is in place prior to performing work. Drivers shall be able to produce a copy upon request of an NMOCD Field inspector.
4. Filing a subsequent C-103 will serve as notification that the well has been plugged.
5. A final C-103 shall be filed (and a site inspection by NMOCD Inspector to determine if the location is satisfactorily cleaned, all equipment, electric poles and trash has been removed to Meet NMOCD standards) before bonding can be released.
6. If work has not begun within 1 Year of the approval of this procedure, an extension request must be file stating the reason the well has not been plugged.
7. Squeeze pressures are not to exceed 500 psi, unless approval is given by NMOCD.
8. Produced water will not be used during any part of the plugging operation.
9. Mud laden fluids must be placed between all cement plugs mixed at 25 sacks per 100 bbls of water.
10. All cement plugs will be a minimum of 100' in length or a minimum of 25 sacks of cement, whichever is greater. 50' of calculated cement excess required for inside casing plugs and 100% calculated cement excess required on outside casing plugs.
11. Class 'C' cement will be used above 7500 feet.
12. Class 'H' cement will be used below 7500 feet.
13. A cement plug is required to be set 50' above and 50' below, casing stubs, DV tools, attempted casing cut offs, cement tops outside casing, salt sections and anywhere the casing is perforated, these plugs require a 4 hour WOC and then will be tagged
14. All Casing Shoes Will Be Perforated 50' below shoe depth and Attempted to be Squeezed, cement needs to be 50' above and 50' Below Casing Shoe inside the Production Casing.
16. When setting the top out cement plug in production, intermediate and surface casing, wellbores should remain full at least 30 minutes after plugs are set
17. A CIBP is to be set within 100' of production perforations, capped with 100' of cement, WOC 4 hours and tag.
18. A CIBP with 35' of cement may be used in lieu of the 100' plug if set with a bailer. This plug will be placed within 100' of the top perforation, (WOC 4 hrs and tag).

19. No more than 3000' is allowed between cement plugs in cased hole and 2000' in open hole.
20. Some of the Formations to be isolated with cement plugs are: These plugs to be set to isolate formation tops
- A) Fusselman
 - B) Devonian
 - C) Morrow
 - D) Wolfcamp
 - E) Bone Springs
 - F) Delaware
 - G) Any salt sections
 - H) Abo
 - I) Glorieta
 - J) Yates.
 - K) Potash---(In the R-111-P Area (Potash Mine Area),
A solid cement plug must be set across the salt section. Fluid used to mix the cement shall be saturated with the salts that are common to the section penetrated and in suitable proportions, not more than 3% calcium chloride (by weight of cement) will be considered the desired mixture whenever possible, WOC 4 hours and tag, this plug will be 50' below the bottom and 50' above the top of the Formation.
21. If cement does not exist behind casing strings at recommended formation depths, the casing can be cut and pulled with plugs set at recommended depths. If casing is not pulled, perforations will be shot and cement squeezed behind casing, WOC and tagged. These plugs will be set 50' below formation bottom to 50' above formation top inside the casing.

DRY HOLE MARKER REQUIREMENTS

The operator shall mark the exact location of the plugged and abandoned well with a steel marker not less than four inches in diameter, 3' below ground level with a plate of at least ¼" welded to the top of the casing and the dry hole marker welded on the plate with the following information welded on the dry hole marker:

1. Operator name
2. Lease and Well Number
3. API Number
4. Unit letter
5. Quarter Section (feet from the North, South, East or West)
6. Section, Township and Range
7. Plugging Date
8. County

SPECIAL CASES -----AGRICULTURE OR PRARIE CHICKEN BREEDING AREAS

In these areas, a below ground marker is required with all pertinent information mentioned above on a plate, set 3' below ground level, a picture of the plate will be supplied to NMOCD for record, the exact location of the marker (longitude and latitude by GPS) will be provided to NMOCD (We typically require a current survey to verify the GPS)

SITE REMEDIATION DUE WITHIN ONE YEAR OF WELL PLUGGING COMPLETION



Warren 3 #2
API # 30-025-30749
1980' FSL & 1980' FWL – Sec. 3-25S-34E
Lea County, New Mexico

AFE # 117974

Executive Summary:

Plug and abandon well.

TD: 15,347' PBDT: 14,415 GL: 3,357' KB:

Surface Casing: 16" 65# at 667'. Cemented with 810 sx. Cement circulated.
1st Intermediate: 10 ¾" 40.5#, 45.5#, 51# at 5,209'. Cemented with 3,825 sx. Cement circulated.
2nd Intermediate: 7 ¾" 33.7#, 29.7#, 39# at 13,290'. Cemented with 1,210 sx. CTOC at 7,779'.
Production Liner: 4 ½" 15.10# at 12,970'-15,347'. Cemented with 400 sx.
Producing Interval: WFMP perms at 13,498-13,511'.

P&A Procedure:

1. Notify Regulatory Agency 24 hours prior to commencing work.
2. MIRU well service unit and all necessary safety equipment. Kill the well, ND tree and NU BOP, POOH laying down 2 ¾" production tubing.
3. Pick up 2 ¾" work string and TIH with 4-1/2" CIBP to 13,398'. Set CIBP, circulate plugging mud, then spot 25 sx Class "H" cement on top of CIBP from 13,398'-13,108' (this will cover perms and 7 ¾" csg shoe). Pick up, reverse tubing clean, WOC and tag.
4. Pick up to 13,020' and spot 45 sx Class "H" cement plug from 13,020'-12,790' (this will cover 4-1/2" liner top). Pick up, reverse tubing clean, WOC and tag.
5. Pick up to 12,256' and spot 50 sx Class "H" cement plug from 12,256'-12,036' (this will cover top of Wolfcamp). Pick up and reverse tubing clean (no tag required).
6. Pick up to 9,294' and spot 45 sx Class "H" cement plug from 9,294'-9,104' (this will cover top of Bone Spring). Pick up, reverse tubing clean and POOH (no tag required).
7. RU WL to RIH and perf 7 ¾" csg at 7,314'. POOH with WL.
8. TIH with 7 ¾" packer to 7,144', set packer and squeeze 65 sx Class "H" cement plug from 7,314'-7,144' (this is a spacer plug). Release packer, pick up, reverse tubing clean and POOH.
9. RU WL to RIH and perf 7 ¾" casing at 5,359'. POOH with WL.
10. TIH with 7 ¾" packer to 5,109', set packer and squeeze 85 sx Class "C" cement plug from 5,359'-5,109' (this will cover top of Delaware and 10 ¾" csg shoe). Release packer, pick up, reverse tbg clean and POOH to WOC.
11. RU WL to RIH to tag TOC then perf 7 ¾" casing at 3,725'. POOH w/ WL.



12. TIH with 7-5/8" packer to 3,595', set packer and squeeze 50 sx Class "C" cement plug from 3,725'-3,595' (this will cover base of salt). Release packer, pick up, reverse tbg clean and POOH to WOC.
13. RU WL to RIH to tag TOC then perf 7 7/8" casing at 1,634'. POOH w/ WL.
14. TIH with 7 7/8" packer to 1,524', set packer and squeeze 45 sx Class "C" cement plug from 1,634'-1,524' (this will cover top of salt). Release packer, pick up, reverse tbg clean and POOH to WOC.
15. RU WL to RIH to tag TOC then perf 7 7/8" casing at 717'.
16. Circulate 265 sx Class "C" cmt plug from 717'-surface.
17. Dig out cellar, cut off wellhead and verify cement behind all casing strings.
18. Install dry hole marker, clean location and RDMO.

Production Engineer:

A handwritten signature in black ink, appearing to read "Brice A. Letcher".

Date: 5/17/2022

Brice A. Letcher, P.E.

Well Name: Warren 3 #2
Location: 1980' FSL & 1980' FWL Sec. 3-25S-34E
County: Lea, NM
Lat/Long: 32.1576881,-103.4598846 NAD83
API #: 30-025-30749
Spud Date: 12/8/92
Compl. Date: 12/13/92



Current Wellbore Diagram:

KB:

GL: 3,357'

20" Hole

16" 65# @ 667'

Cmt w/ 810 sx, Cmt circulated

14-3/4" Hole

10-3/4" 40.5#, 45.5# & 51# @ 5,209'
Cmt w/ 3,825 sx, Cmt circulated

9-1/2" Hole

CTOC @ 7,779'

4-1/2" Liner Hanger @ 12,970'

7-5/8" 33.7#, 29.7# & 39# @ 13,290'
Cmt w/ 1210 sx, CTOC @ 7,779'

4-1/2" 15# P-110 @ 15,347'
Cmt w/ 400 sx

PBTD @ 14,415'
TD @ 15,347'

2-7/8" TBG set @ 13,350'

Wolfcamp perms: 13,498'-13,511'

CIBP w/ 35 sx cmt @ 14,450'

Morrow perms: 14,818'-14,838'

Formation Tops

Delaware	5,309
Bone Spring Lm	9,244
BS 3rd Sand	11,888
Wolfcamp	12,206
Strawn	13,680
Atoka	13,772
Morrow Clastic	14,578

Not to Scale
By: BL 5/17/22

Well Name: Warren 3 #2
Location: 1980' FSL & 1980' FWL Sec. 3-25S-34E
County: Lea, NM
Lat/Long: 32.1576881, -103.4598846 NAD83
API #: 30-025-30749
Spud Date: 12/8/92
Compl. Date: 12/13/92

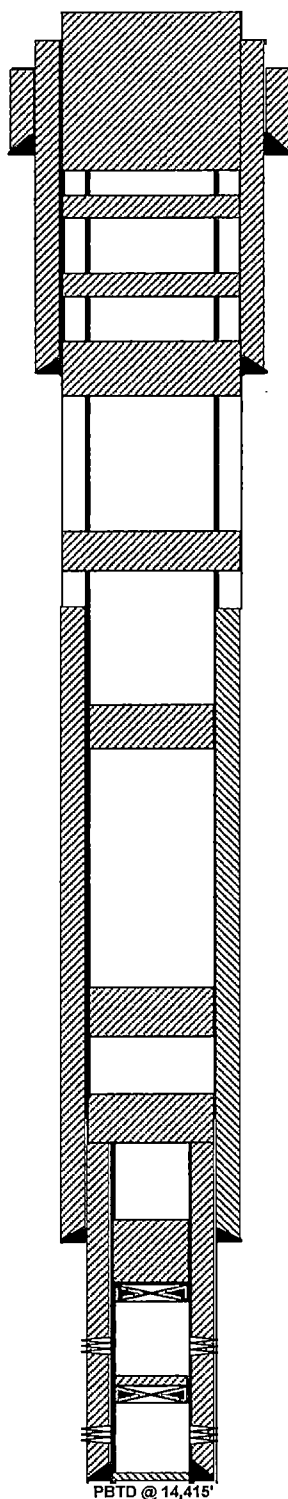


Proposed Wellbore Diagram:

KB:

GL: 3,357'

20" Hole
 16" 65# @ 667'
 Cmt w/ 810 sx, Cmt circulated
 14-3/4" Hole
 10-3/4" 40.5#, 45.5# & 51# @ 5,209'
 Cmt w/ 3,825 sx, Cmt circulated
 9-1/2" Hole
 CTOC @ 7,779'
 4-1/2" Liner Hanger @ 12,970'
 7-5/8" 33.7#, 29.7# & 39# @ 13,290'
 Cmt w/ 1210 sx, CTOC @ 7,779'
 4-1/2" 15# P-110 @ 15,347'
 Cmt w/ 400 sx



Perf & circ 265 sx cmt plug @ 0'-717' (verify)
 16" Csg Shoe - surface
 Perf/sqz 45 sx cmt plug @ 1,524'-1,634' (tag)
 Top of Salt
 Perf/sqz 50 sx cmt plug @ 3,595'-3,725' (tag)
 Base of Salt
 Perf/sqz 85 sx cmt plug @ 5,106'-5,359' (tag)
 Delaware Top & 10 3/4" Csg Shoe
 Perf/sqz 65 sx cmt plug @ 7,143'-7,314'
 Spacer
 45 sx cmt plug @ 9,101'-9,294'
 Bone Spring Top
 50 sx cmt plug @ 12,033'-12,256'
 WFMP Top
 45 sx cmt plug @ 12,790'-13,020' (tag)
 TOL
 CIBP w/ 25 sx cmt @ 13,107'-13,398' (tag)
 7 5/8" Csg Shoe & Producing zone
 Wolfcamp perms: 13,498'-13,511'
 CIBP w/ 35 sx cmt @ 14,450'
 Morrow perms: 14,818'-14,838'

Formation Tops

Delaware	5,309
Bone Spring Lm	9,244
BS 3rd Sand	11,888
Wolfcamp	12,206
Strawn	13,680
Atoka	13,772
Morrow Clastic	14,578

PBTD @ 14,415'
 TD @ 15,347'

Not to Scale
 By: BL 5/17/22



Emergency Contact Information

In the event of an accident/safety incident involving EOG employees or contract personnel contact:

Name	Title	Cell	Office
Brian Chandler	Safety Manager	817-239-0251	817-806-0486
Ashley Mayfield	Sr. Safety Rep	432-258-7998	432-686-3662

In the event of a spill or environmental release contact:

Name	Title	Cell	Office
Doug Lowrie	Environmental Manager	432-425-6923	432-686-3755

Production Department Contacts:

Name	Title	Cell	Office
Mario Arevalo	NM Production Superintendent	940-231-8118	575-738-0397
Zack Jones	Production Foreman	432-488-8556	
Casey Rodriguez	Lead Lease Operator	432-661-4226	
Brice Letcher	Production Engineer	575-748-5021	
Clinton Cox	Production Manager	432-894-4920	432-686-3614
Ron Willett	Production Advisor	432-230-2135	432-686-3775
Tim Singley	Production Superintendent	601-731-4718	432-686-6900

Completions Department Contacts:

Name	Title	Cell	Office
Alex Richter	Completions Engineer Advisor	432-634-9148	432-686-3638

Police/Fire/Hospital Contacts

Fire	911
Sheriff (Eddy County)	575-887-7551
Sheriff (Lea County)	575-396-3611
Hospital – Carlsbad Medical Center (Carlsbad, NM)	575-887-4100
Hospital – Lea Regional Medical Center (Hobbs, NM)	575-492-5000
Hospital – Nor-Lea General Hospital (Lovington, NM)	575-396-6611
Hospital – Winkler County Memorial Hospital (Kermit, TX)	432-586-5864

District I
1625 N. French Dr., Hobbs, NM 88240
Phone:(575) 393-6161 Fax:(575) 393-0720
District II
811 S. First St., Artesia, NM 88210
Phone:(575) 748-1283 Fax:(575) 748-9720
District III
1000 Rio Brazos Rd., Aztec, NM 87410
Phone:(505) 334-6178 Fax:(505) 334-6170
District IV
1220 S. St Francis Dr., Santa Fe, NM 87505
Phone:(505) 476-3470 Fax:(505) 476-3462

State of New Mexico
Energy, Minerals and Natural Resources
Oil Conservation Division
1220 S. St Francis Dr.
Santa Fe, NM 87505

COMMENTS

Action 109022

COMMENTS

Operator: EOG RESOURCES INC P.O. Box 2267 Midland, TX 79702	OGRID: 7377
	Action Number: 109022
	Action Type: [C-103] NOI Plug & Abandon (C-103F)

COMMENTS

Created By	Comment	Comment Date
plmartinez	DATA ENTRY PM	5/26/2022

District I
1625 N. French Dr., Hobbs, NM 88240
Phone:(575) 393-6161 Fax:(575) 393-0720
District II
811 S. First St., Artesia, NM 88210
Phone:(575) 748-1283 Fax:(575) 748-9720
District III
1000 Rio Brazos Rd., Aztec, NM 87410
Phone:(505) 334-6178 Fax:(505) 334-6170
District IV
1220 S. St Francis Dr., Santa Fe, NM 87505
Phone:(505) 476-3470 Fax:(505) 476-3462

State of New Mexico
Energy, Minerals and Natural Resources
Oil Conservation Division
1220 S. St Francis Dr.
Santa Fe, NM 87505

CONDITIONS

Action 109022

CONDITIONS

Operator: EOG RESOURCES INC P.O. Box 2267 Midland, TX 79702	OGRID: 7377
	Action Number: 109022
	Action Type: [C-103] NOI Plug & Abandon (C-103F)

CONDITIONS

Created By	Condition	Condition Date
kfortner	See attached COA	5/25/2022