

Well Name: TRIBAL 05	Well Location: T26N / R3W / SEC 5 / NENE /	County or Parish/State: RIO ARRIBA / NM
Well Number: 01	Type of Well: CONVENTIONAL GAS WELL	Allottee or Tribe Name: JICARILLA APACHE
Lease Number: JIC97	Unit or CA Name:	Unit or CA Number:
US Well Number: 3003929238	Well Status: Producing Gas Well	Operator: HILCORP ENERGY COMPANY

Notice of Intent

Sundry ID: 2670380

Type of Submission: Notice of Intent	Type of Action: Plug and Abandonment
Date Sundry Submitted: 05/05/2022	Time Sundry Submitted: 01:26
Date proposed operation will begin: 05/19/2022	

Procedure Description: Hilcorp Energy Company requests permission to P&A the subject well per the attached procedures, current and proposed wellbore schematics. The Pre-Disturbance Site Visit was held on 4/19/22 with Kurt Sandoval/BIA & Alfred Vigil/Jicarilla. Reclamation plan was reviewed by Roger Herrera/BLM. The Re-Vegetation Plan is attached. A closed loop system will be used.

Surface Disturbance

Is any additional surface disturbance proposed?: No

NOI Attachments

Procedure Description

- Tribal_5_1_PA_Procedure_for_NOI_20220505132550.pdf
- Tribal_5_Unit_1_Final_Reclamation_Plan_20220505132549.pdf

Well Name: TRIBAL 05	Well Location: T26N / R3W / SEC 5 / NENE /	County or Parish/State: RIO ARRIBA / NM
Well Number: 01	Type of Well: CONVENTIONAL GAS WELL	Allottee or Tribe Name: JICARILLA APACHE
Lease Number: JIC97	Unit or CA Name:	Unit or CA Number:
US Well Number: 3003929238	Well Status: Producing Gas Well	Operator: HILCORP ENERGY COMPANY

Conditions of Approval

Additional

2670380_NOIA_5_1_3003929238_KR_06012022_20220601140227.pdf
General_Requirement_PxA_20220601140218.pdf
26N03W05AKd_Tribal_05_01_20220531172823.pdf

Operator

I certify that the foregoing is true and correct. Title 18 U.S.C. Section 1001 and Title 43 U.S.C. Section 1212, make it a crime for any person knowingly and willfully to make to any department or agency of the United States any false, fictitious or fraudulent statements or representations as to any matter within its jurisdiction. Electronic submission of Sundry Notices through this system satisfies regulations requiring a

Operator Electronic Signature: KANDIS ROLAND	Signed on: MAY 05, 2022 01:26 PM
Name: HILCORP ENERGY COMPANY	
Title: Operation Regulatory Tech	
Street Address: 382 Road 3100	
City: Farmington	State: NM
Phone: (505) 599-3400	
Email address: kroland@hilcorp.com	

Field

Representative Name:		
Street Address:		
City:	State:	Zip:
Phone:		
Email address:		

BLM Point of Contact

BLM POC Name: KENNETH G RENNICK	BLM POC Title: Petroleum Engineer
BLM POC Phone: 5055647742	BLM POC Email Address: krennick@blm.gov
Disposition: Approved	Disposition Date: 06/01/2022
Signature: Kenneth Rennick	



P&A Procedure

General Information			
Well Name	Tribal 5 1	Date:	5/5/2022
API:	30-039-29238	AFE #	
Field:	San Juan	County	Rio Arriba
Status:	Well is ACOI		
Subject:	Permanently P&A wellbore		
By:	M. Wissing		

Well Data

Surface Casing: 9-5/8" 36# J-55 at 332'

Production Casing: 7" N-80 23# at 4,210'

Casing Liner: 4-1/2" 11.6# N-80 at 3,907' - 8,230'

Production Tubing: 2-3/8" 4.7# J-55 at 8,160'

Current Perforations: 5,930'-6,012', 8,056'-8,174'

Current PBTD: 8,222' (Cement)

CBL: 11/19/2005

SICP = 0 psig; SIBP: 0 psi

Hold PJSM prior to begin all operations. Properly document all operations via the JSA process. Ensure that all personnel onsite abide by HEC safety protocol, including PPE, housekeeping, and standard guidelines. Verify cathodic protection is off and wellhead instrumentation is properly disconnected from the wellhead. Comply with all NMOCD, BLM, Jicarilla, and HEC safety and environmental regulations. Verify there is no H2S present prior to beginning operations. If any H2S is present, take the necessary actions to ensure that the location is safe prior to beginning operations. Observe and record pressures across all strings daily, prior to beginning operations.

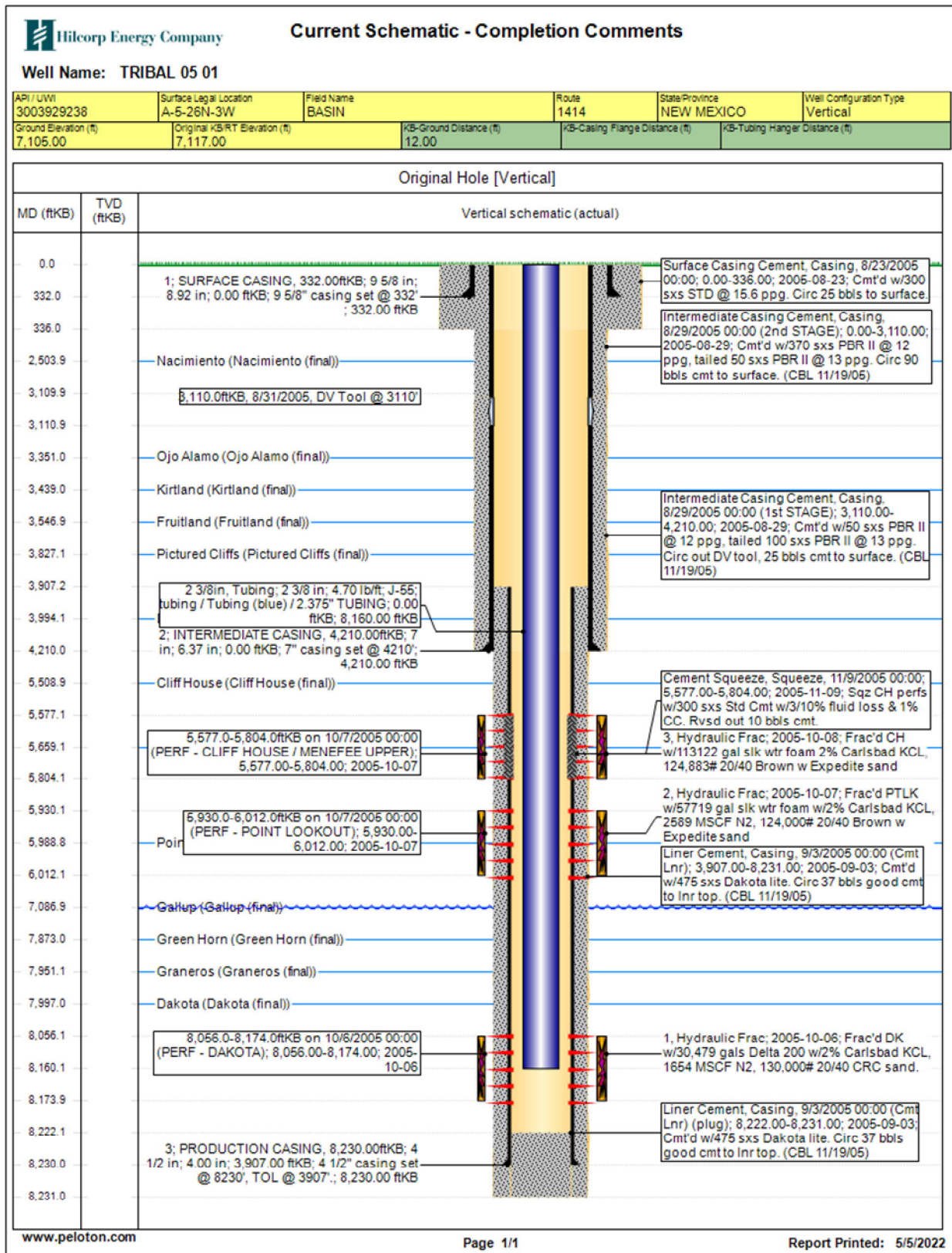
Remember to notify NMOCD, Jicarilla, & BLM 24 hours prior to starting operations on location. This procedure is contingent upon P&A sundry approval by the NMOCD & BLM.

P&A Rig Procedure: Tribal 5 #1

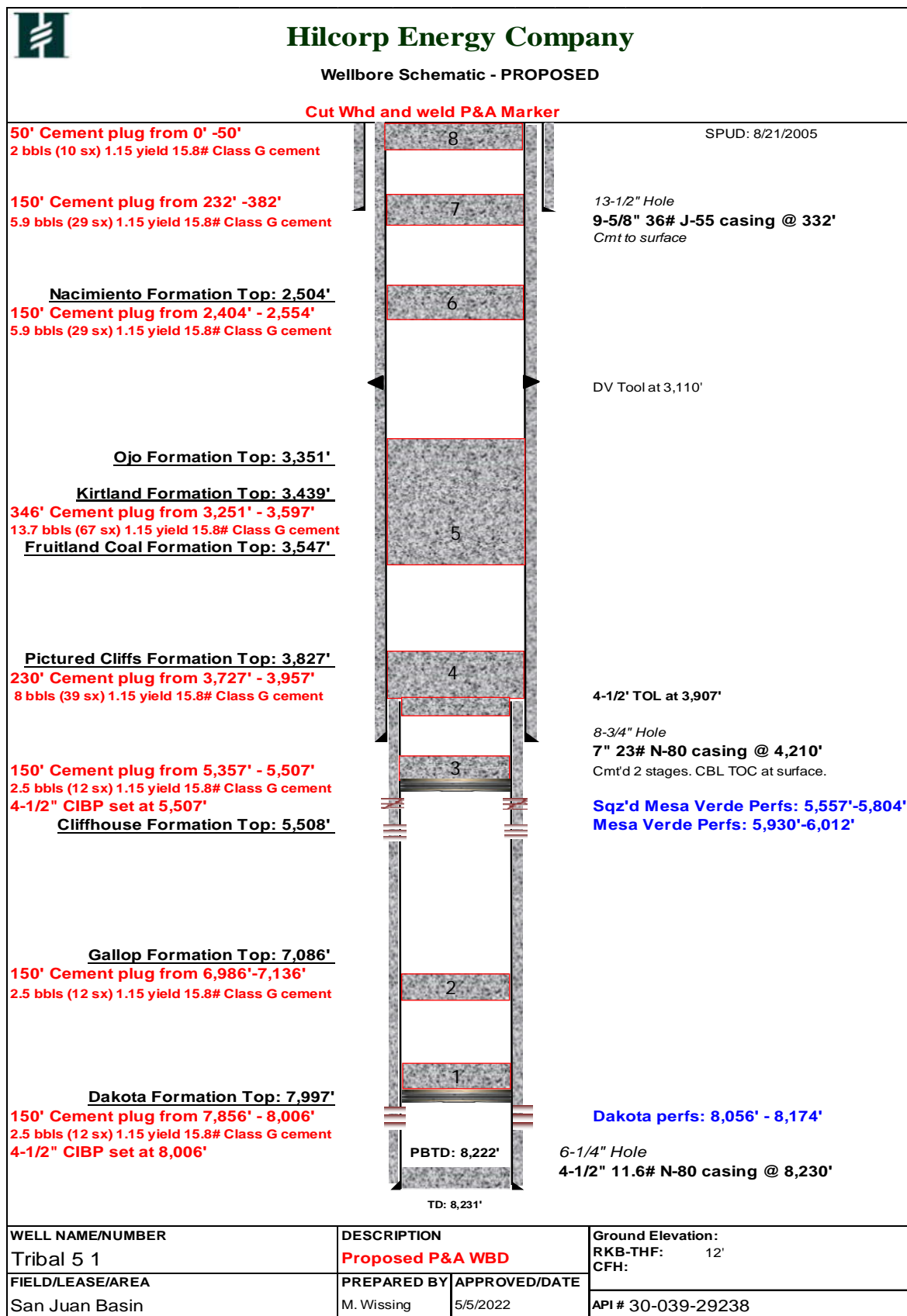
1. MIRU P&A rig and equipment. Record pressures on all strings.
2. NU BOP & test. Release tbg hanger and TOO H with 2-3/8" production tbg.
3. MU 4-1/2" csg scraper, RIH and clear casing liner to +/- 8,025'.
4. MU 4.5" CIBP and RIH. Set CIBP at 8,006'.
 - a. **Top Dakota perf at 8,056';**
5. **Plug #1 (Top Dakota perf at 8,056')**: RU cementers and pump a 150' balanced cmt plug inside the 4-1/2" liner above CIBP from 7,856'-8,006', using 2.5 bbls (12 sx) of 15.8+ ppg Class G cmt.
6. WOC and tag TOC.
7. **Plug #2 (Gallop Formation Top at 7,086')**: RU cementers and pump a 150' balanced cmt plug inside the 4-1/2" liner from 6,986'-7,136', using 2.5 bbls (12 sx) of 15.8+ ppg Class G cmt.
8. WOC and tag TOC.
9. MU 4.5" CIBP and RIH. Set CIBP at 5,507'.
 - a. **Top Mesa Verde sqz'd perf at 5,557';**
10. Load wellbore full of water and pressure test the 7" casing & 4-1/2" liner to 500 psi to verify CIBP is set and csg integrity.
11. **Plug #3 (Mesa Verde top sqz'd perf at 5,557' and formation top at 5,508')**: RU cementers and pump a 150' balanced cmt plug inside the 4-1/2" liner from 5,357' - 5,507' using 2.5 bbls (12 sx) of 15.8+ ppg Class G cmt.
12. **Plug #4 (PC top at 3,827', TOL at 3,907')**: RU cementers and pump a 370' cement plug inside the 7" csg and 4-1/2" liner from 3,727'-3,957', using 8 bbls (39 sx) of 15.8+ ppg Class G cmt.
13. **Plug #5 (FRC top at 3,547', Kirtland top at 3,439'; Ojo top at 3,351')**: RU cementers and pump a 346' cement plug inside the 7" csg from 3,251'-3,597', using 13.7 bbls (67 sx) of 15.8+ ppg Class G cmt.
14. **Plug #6 (Nacimiento at 2,504')**: RU cementers and pump a 150' cement plug inside 7" csg from 2,404' – 2554', using 5.9 bbls (29 sx) of 15.8+ ppg Class G cmt.
15. **Plug #7 (Surface casing shoe at 332')**: RU cementers and pump a 150' cmt plug inside 7" csg from 232' – 382', using 5.9 bbls (29 sx) of 15.8+ ppg Class G cmt.

16. **Plug #8 (Surface):** RU cementers and pump a 50' cmt plug inside 7" csg from 0'- 50', using 2 bbls (10 sx) of 15.8+ ppg Class G cmt.
17. Verify all pressures on all strings are at 0 psi.
18. ND BOP. Tag cmt and top off wellbore as needed. Cutoff wellhead at surface and weld on P&A marker.
19. RDMO P&A rig.

CURRENT WELLBORE SCHEMATIC



PROPOSED WELLBORE SCHEMATIC



Hilcorp Energy

Tribal 5 unit 1

36.520787, -107.160967

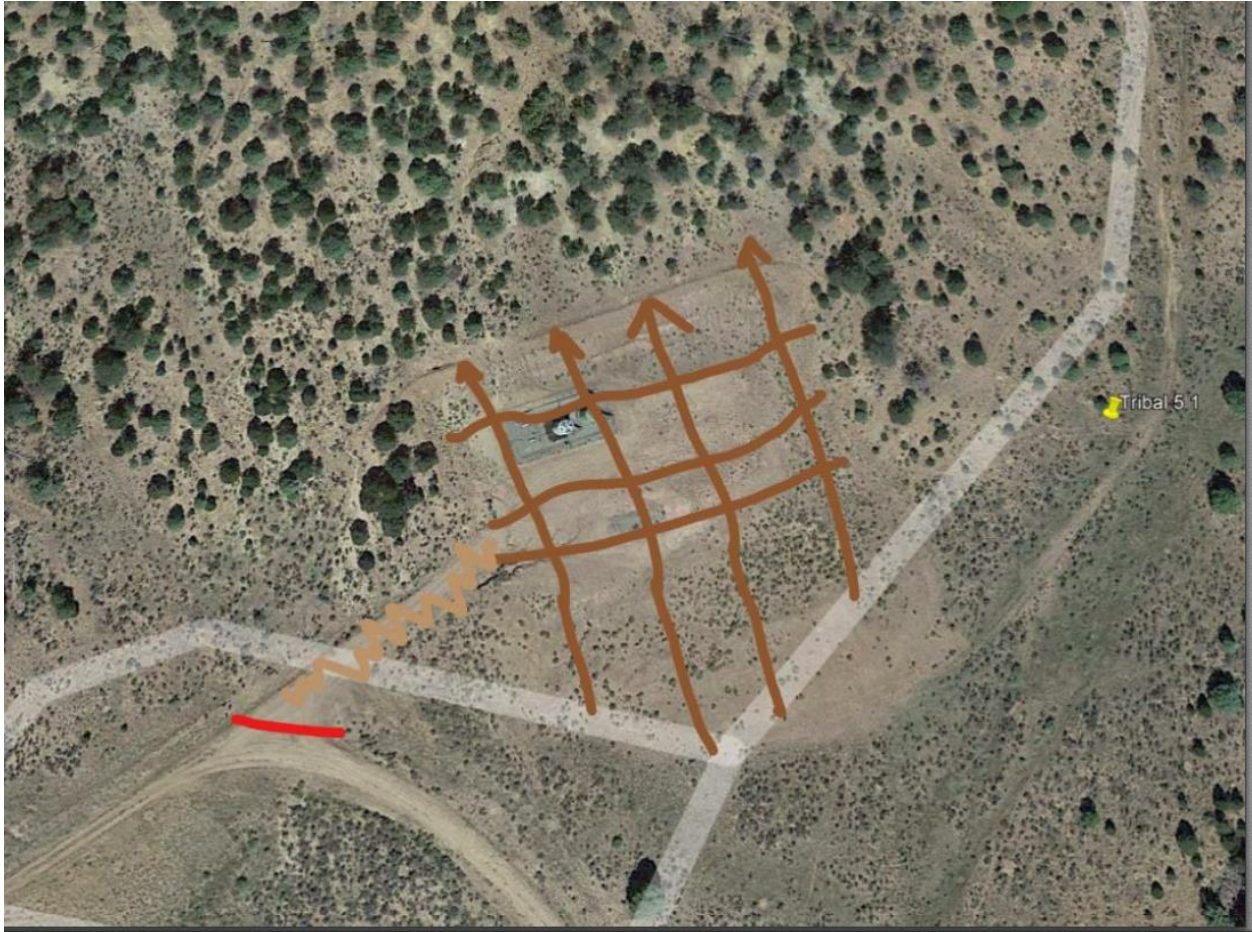
API-30-039-29238

Jicarilla Lease #97

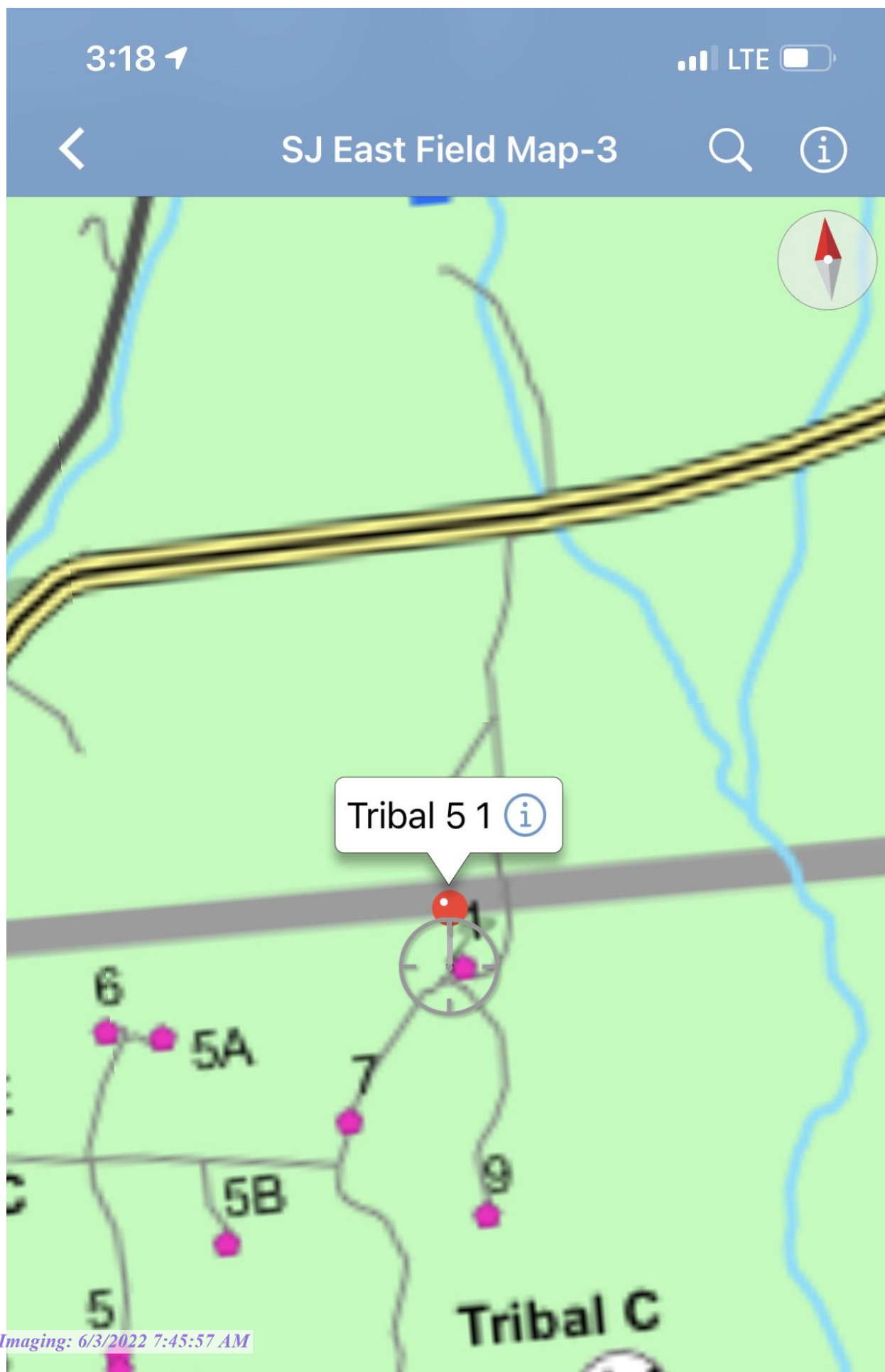
Final Reclamation Plan

Onsite 4/19/2022 with Kurt Sandoval, Alfred Vigil, Lloyd Bell, Bryan Hall.

1. Pick up and remove all trash, metal, cable, and any foreign debris within 200' of location.
2. Remove anchors.
3. Strip equipment off of facility.
4. Remove culvert. Fence entrance to location.
5. Strip gravel, and haul it to intersection on the road, approximately .5 miles.
6. Harvest to remove meter run and piping back to dog leg.
7. Re-contour pad to re-create natural terrain. Push material towards the Northwest side of location up to cut slope.
8. Set surface wellhead marker plate.
9. Reclaim road back to the main road.
10. Rip compacted soil.
11. Re-seed all disturbed areas. Drill where applicable at rate per acre defined by seed mix, and broadcast seed and harrow, at double the rate, all other disturbed areas. Mesa Mix seed mix will be used.







**UNITED STATES DEPARTMENT OF THE INTERIOR
BUREAU OF LAND MANAGEMENT
FARMINGTON DISTRICT OFFICE
6251 COLLEGE BLVD.
FARMINGTON, NEW MEXICO 87402**

AFMSS 2 Sundry ID 2670380

Attachment to notice of Intention to Abandon

Well: Tribal 05 01

CONDITIONS OF APPROVAL

1. Plugging operations authorized are subject to the attached "General Requirements for Permanent Abandonment of Wells on Federal and Indian Lease."
2. The following modifications to your plugging program are to be made:
 - a) Add a plug to cover the Mancos formation top at 6310'.
 - b) Adjust Plug #6 (Nacimiento) to cover BLM pick at 2538'.
3. Farmington Office is to be notified at least 24 hours before the plugging operations commence at (505) 564-7750.

You are also required to place cement excesses per 4.2 and 4.4 of the attached General Requirements.

Office Hours: 7:45 a.m. to 4:30 p.m.

K. Rennick 06/01/2022

**GENERAL REQUIREMENTS FOR
PERMANENT ABANDONMENT OF WELLS ON FEDERAL AND INDIAN LEASES
FARMINGTON FIELD OFFICE**

1.0 The approved plugging plans may contain variances from the following minimum general requirements.

1.1 Modification of the approved plugging procedure is allowed only with the prior approval of the Authorized Officer, Farmington Field Office.

1.2 Requirements may be added to address specific well conditions.

2.0 Materials used must be accurately measured. (densometer/scales)

3.0 A tank or lined pit must be used for containment of any fluids from the wellbore during plugging operations and all pits are to be fenced with woven wire. These pits will be fenced on three sides and once the rig leaves location, the fourth side will be fenced.

3.1 Pits are not to be used for disposal of any hydrocarbons. If hydrocarbons are present in the pit, the fluids must be removed prior to filling in.

4.0 All cement plugs are to be placed through a work string. Cement may be bull-headed down the casing with prior approval. Cement caps on top of bridge plugs or cement retainers may be placed by dump bailer.

4.1 The cement shall be as specified in the approved plugging plan.

4.2 All cement plugs placed inside casing shall have sufficient volume to fill a minimum of 100' of the casing, or annular void(s) between casings, plus an excess volume sufficient to provide for 50 linear feet of fill above the plug.

4.3 Surface plugs may be no less than 50' in length.

4.4 All cement plugs placed to fill annular void(s) between casing and the formation shall be of sufficient volume to fill a minimum of 100' of the annular space plus 100% excess, calculated using the bit size, or 100' of annular capacity, determined from a caliper log, plus an excess volume sufficient to provide for 50 linear feet of fill above the plug.

4.5 All cement plugs placed to fill an open hole shall be of sufficient volume to fill a minimum of 100' of hole, as calculated from a caliper log, plus an excess volume sufficient to provide for 50 linear feet of fill above the plug. In the absence of a caliper log, an excess of 100% shall be required.

4.6 A cement bond log or other accepted cement evaluation tool is required to be run if one had not been previously ran or cement did not circulate to surface during the original casing cementing job or subsequent cementing jobs.

5.0 All cement plugs spotted across, or above, any exposed zone(s), when; the wellbore is not full of fluid or the fluid level will not remain static, and in the case of lost circulation or partial returns during cement placement, shall be tested by tagging with the work string.

- 5.1 The top of any cement plug verified by tagging must be at or above the depth specified in the approved plan, without regard to any excess.
- 5.2 Testing will not be required for any cement plug that is mechanically contained by use of a bridge plug and/or cement retainer, if casing integrity has been established.
- 5.3 Any cement plug which is the only isolating medium, for a fresh water interval or a zone containing a prospectively valuable deposit of minerals, shall be tested by tagging.
- 5.4 If perforations are required below the surface casing shoe, a 30 minute minimum wait time will be required to determine if gas and/or water flows are present. If flow is present, the well will be shut-in for a minimum of one hour and the pressure recorded. Short or long term venting may be necessary to evacuate trapped gas. **If only a water flow occurs with no associated gas, shut well in and record the pressures. Contact the Engineer as it may be necessary to change the cement weight and additives.**

6.0 Before setting any cement plugs the hole needs to be rolled. All wells are to be controlled by means of a fluid that is to be of a weight and consistency necessary to stabilize the wellbore. This fluid shall be left in place as filler between all plugs.

- 6.1 Drilling mud may be used as the wellbore fluid in open hole plugging operations.
- 6.2 The wellbore fluid used in cased holes shall be of sufficient weight to balance known pore pressures in all exposed formations.

7.0 A blowout preventer and related equipment (BOPE) shall be installed and tested prior to working in a wellbore with any exposed zone(s); (1) that are over pressured, (2) where the pressures are unknown, or (3) known to contain H₂S.

8.0 Within 30 days after plugging work is completed, file a Sundry Notice, Subsequent Report of Abandonment (Form 3160-5), five copies, with the Field Manager, Bureau of Land Management, 6251 College Blvd., Suite A, Farmington, NM 87402. The report should show the manner in which the plugging work was carried out, the extent, by depth(s), of cement plugs placed, and the size and location, by depth(s), of casing left in the well. Show date well was plugged.

9.0 All permanently abandoned wells are to be marked with a permanent monument as specified in 43 CFR 3162.6(d). Unless otherwise approved.

10.0 If this well is located in a Specially Designated Area (SDA), compliance with the appropriate seasonal closure requirements will be necessary.

All of the above are minimum requirements. Failure to comply with the above conditions of approval may result in an assessment for noncompliance and/or a Shut-in Order being issued pursuant to 43 CFR 3163.1. You are further advised that any instructions, orders or decisions issued by the Bureau of Land Management are subject to administrative review pursuant to 43 CFR 3165.3 and appeal pursuant to 43 CFR 3165.4 and 43 CFR 4.700.

(October 2012 Revision)

BLM FLUID MINERALS P&A Geologic Report

Date Completed: 05/31/2022

Well No. Tribal 05 #01 (API# 30-039-29238)		Location	660	FNL	&	660	FEL
Lease No. JIC97		Sec. 05	T26N			R03W	
Operator Hilcorp Energy Company		County	Rio Arriba		State	New Mexico	
Total Depth 8230'	PBTD 8222'	Formation Dakota/Mesaverde					
Elevation (GL) 7105'		Elevation (KB) 7117'					

Geologic Formations	Est. Top	Est. Bottom	Log Top	Log Bottom	Remarks
San Jose			Surface	2538	Surface/possible freshwater sands
Nacimiento			2538	3351	Possible freshwater sands
Ojo Alamo Ss			3351	3439	Aquifer (possible freshwater)
Kirtland Shale			3439	3547	Possible gas
Fruitland			3547	3822	Coal/Gas/Water
Pictured Cliffs Ss			3822	3994	Gas
Lewis Shale			3994		
Chacra		5508			Possible Gas
Cliff House Ss	5508	5659			Water/Possible gas
Menefee	5659	5989			Coal/Ss/Water/Possible O&G
Point Lookout Ss	5989	6169			Probable water/Possible O&G
Mancos Shale	6169	7087			Probable O&G
Gallup	7087	7873			Probable O&G/Water
Greenhorn	7873	7951			
Graneros Shale	7951	7997			
Dakota Ss	7997	PBTD			O&G/Water
Morrison					

Remarks:

P & A

- Tops below the Lewis Shale were estimated because well logs were not available below this depth.
- BLM picks/estimates for the Nacimiento and Mancos formation tops vary from Operator.

- Add a plug to cover the Mancos formation top at 6310'.

- Adjust Plug #6 (Nacimiento) to cover BLM pick at 2538'.

- The plugs proposed in the P&A procedure, with recommended changes, will adequately protect any freshwater sands in this well bore.
- Mesaverde perfs 5577' – 6012'. Perfs from 5577' – 5804' squeezed. Open perfs 5930' – 6012'.
- Dakota perfs 8056' – 8174'.

Reference Well:

1) Formation Tops (Dakota – Lewis)

Hilcorp Energy Company
Tribal C #5A
1100' FNL, 1550' FWL
Sec. 05, T26N, R03W
7280' KB

Prepared by: Chris Wenman

District I
1625 N. French Dr., Hobbs, NM 88240
Phone:(575) 393-6161 Fax:(575) 393-0720
District II
811 S. First St., Artesia, NM 88210
Phone:(575) 748-1283 Fax:(575) 748-9720
District III
1000 Rio Brazos Rd., Aztec, NM 87410
Phone:(505) 334-6178 Fax:(505) 334-6170
District IV
1220 S. St Francis Dr., Santa Fe, NM 87505
Phone:(505) 476-3470 Fax:(505) 476-3462

State of New Mexico
Energy, Minerals and Natural Resources
Oil Conservation Division
1220 S. St Francis Dr.
Santa Fe, NM 87505

CONDITIONS

Action 112907

CONDITIONS

Operator: HILCORP ENERGY COMPANY 1111 Travis Street Houston, TX 77002	OGRID: 372171
	Action Number: 112907
	Action Type: [C-103] NOI Plug & Abandon (C-103F)

CONDITIONS

Created By	Condition	Condition Date
kpickford	Add a plug 5458'-5558' to cover the Chacra top at 5508'.	6/3/2022
kpickford	Notify NMOCD 24 Hours Prior to beginning operations	6/3/2022
kpickford	Adhere to BLM approved COAs and plugs. See GEO report.	6/3/2022