

Well Name: ARIZONA JICARILLA	Well Location: T25N / R4W / SEC 35 / NESE /	County or Parish/State: RIO ARRIBA / NM
Well Number: 3	Type of Well: CONVENTIONAL GAS WELL	Allottee or Tribe Name: JICARILLA APACHE
Lease Number: JIC125	Unit or CA Name:	Unit or CA Number:
US Well Number: 3003905716	Well Status: Gas Well Shut In	Operator: HILCORP ENERGY COMPANY

Notice of Intent

Sundry ID: 2671631

Type of Submission: Notice of Intent	Type of Action: Plug and Abandonment
Date Sundry Submitted: 05/13/2022	Time Sundry Submitted: 05:55
Date proposed operation will begin: 06/03/2022	

**Procedure Description:** Hilcorp Energy Company requests permission to P&A the subject well per the attached procedures, current and proposed wellbore schematics. The Pre-Disturbance Site Visit was held on 4/19/2022 with Kurt Sandoval/BIA and Alfred Vigil/Jicarilla. The Re-Vegetation Plan that is attached was reviewed by Roger Herrera/BLM. A closed loop system will be used.

Surface Disturbance

Is any additional surface disturbance proposed?: No

NOI Attachments

Procedure Description

- Arizona\_Jicarilla\_3\_P\_A\_Procedure\_for\_NOI\_20220513055318.pdf
- Arizona\_Jicarilla\_3\_Final\_Reclamation\_Plan\_20220513055318.pdf

Received by OCD: 6/17/2022 8:49:10 AM

Page 2 of 16

Well Name: ARIZONA JICARILLA	Well Location: T25N / R4W / SEC 35 / NESE /	County or Parish/State: RIO ARRIBA / NM
Well Number: 3	Type of Well: CONVENTIONAL GAS WELL	Allottee or Tribe Name: JICARILLA APACHE
Lease Number: JIC125	Unit or CA Name:	Unit or CA Number:
US Well Number: 3003905716	Well Status: Gas Well Shut In	Operator: HILCORP ENERGY COMPANY

Conditions of Approval

Additional

General\_Requirement\_PxA\_20220616151303.pdf  
Arizona\_Jicarilla\_No\_3\_Geo\_Rpt\_20220616140256.pdf

Authorized

2671631\_NOIA\_3\_3003905716\_KR\_06162022\_20220616151553.pdf

Operator

I certify that the foregoing is true and correct. Title 18 U.S.C. Section 1001 and Title 43 U.S.C. Section 1212, make it a crime for any person knowingly and willfully to make to any department or agency of the United States any false, fictitious or fraudulent statements or representations as to any matter within its jurisdiction. Electronic submission of Sundry Notices through this system satisfies regulations requiring a

Operator Electronic Signature: KANDIS ROLAND	Signed on: MAY 13, 2022 05:55 AM
Name: HILCORP ENERGY COMPANY	
Title: Operation Regulatory Tech	
Street Address: 382 Road 3100	
City: Farmington	State: NM
Phone: (505) 599-3400	
Email address: kroland@hilcorp.com	

Field

Representative Name:		
Street Address:		
City:	State:	Zip:
Phone:		
Email address:		

BLM Point of Contact

BLM POC Name: KENNETH G RENNICK	BLM POC Title: Petroleum Engineer
BLM POC Phone: 5055647742	BLM POC Email Address: krennick@blm.gov
Disposition: Accepted	Disposition Date: 06/16/2022
Signature: Kenneth Rennick	



## P&A Procedure

General Information			
<b>Well Name</b>	Arizona Jicarilla #3	<b>Date:</b>	5/12/2022
<b>API:</b>	30-039-05716	<b>AFE #</b>	
<b>Field:</b>	San Juan	<b>County</b>	San Juan
<b>Status:</b>	Well is ACOI		
<b>Subject:</b>	Permanently P&A wellbore		
<b>By:</b>	M. Wissing		

### Well Data

Surface Casing: 8-5/8" 24# J-55 8rd csg at 102'

Production Casing: 4-1/2" 10.5# 8rd at 3,660'

Production tubing: 2-3/8" 4.7# J-55 at 3,596' (in 1959)

Current Perforations: 3,564' – 3,618'

Current PBTD: 3,660' (cement plug)

KB: 11'

SICP = 0 psig/ BH: 0 psi (no historic BH pressures in last 12 tests)

Cement log: Temp Survey

**Notes:** No documented rig work on well. No slickline reports able to be found. Chart meter well.

Hold PJSM prior to begin all operations. Properly document all operations via the JSA process. Ensure that all personnel onsite abide by HEC safety protocol, including PPE, housekeeping, and standard guidelines. Verify cathodic protection is off and wellhead instrumentation is properly disconnected from the wellhead. Comply with all NMOCD, BLM, and HEC safety and environmental regulations. Verify there is no H2S present prior to beginning operations. If any H2S is present, take the necessary actions to ensure that the location is safe prior to beginning operations. Observe and record pressures across all strings daily, prior to beginning operations.

Remember to notify NMOCD and BLM 24 hours prior to starting operations on location. This procedure is contingent upon P&A sundry approval by the NMOCD & BLM.

**P&A Rig Procedure- Arizona Jicarilla #3**

1. RU slickline and MU 2-3/8" GR. RIH and clear tbg to 3,596' at EOT.
2. MIRU P&A rig and equipment.
  - a. *Record daily pressures on all strings.*
  - b. *Document all agency onsite witnesses and any approved procedure changes with all agencies.*
3. NU 5k BOP & test. TOH & LD with 2-3/8" production tbg.
4. MU work string and RIH with 4.5" casing scraper or 4.5" gauge ring to +/- 3,525'.
5. MU 4.5" CIBP and RIH. Set CIBP at 3,514'. Roll wellbore if set with pipe.
  - a. **Top PC perf at 3,564'.**
6. RU E-line and MU CBL tools. Load wellbore with water. RIH and log well from CIBP to surface with pressure on csg.
  - a. *Review results with NMOCD and BLM to finalize all future cement plugs.*
7. Pressure test the casing to 500 psi to verify wellbore integrity and plug set.
8. RIH with tbg.
9. **Plug #1 (PC top perf 3,564'; PC formation top at 3,562', FRC top at 3,227', Kirtland top at 3,162', Ojo top at 3,032')**: RU cementers and pump a 582' balanced cmt plug inside the 4-1/2" csg from 2,932' – 3,514', using 9.4 bbls (46 sx) of 15.8+ ppg Class G cmt.
10. TOOH with tbg.
11. RU E-line and MU DP charges, RIH and perf 4-1/2" csg at 1,711'.
12. MU 4-1/2" CICR and RIH. Set CICR at 1,661'
  - a. Nacimiento formation top at 1,661'.
13. Establish injection rate.
14. **Plug #2 (Nacimiento formation top at 1,661')**: RU cementers and pump a 100' inside/outside cmt plug with the 4-1/2" csg from 1,611' – 1,711' + 50' excess cement inside 4-1/2" csg, using 7.6 bbls (37 sx) of 15.8+ ppg Class G cmt.
15. TOOH with tbg.
16. RU E-line and MU DP perf gun. RIH and perforate 4-1/2" csg at 152'. Establish circulation with 8-5/8" x 4-1/2" casing annulus to surface.
  - a. Casing shoe at 102'

17. **Plug #3 (Surface casing at 102')**: RU cementers and circulate a 152' cmt plug from Surface – 152' inside the 4-1/2" csg & 4-1/2" x 8-5/8" csg annulus using 11.3 bbls (55 sx) of 15.8 ppg Class G cmt.
18. Verify all pressures on all strings are at 0 psi.
19. ND BOP. Cutoff wellhead at surface and weld on labeled P&A marker. Top off wellbore with cmt as needed.
20. RDMO P&A rig.



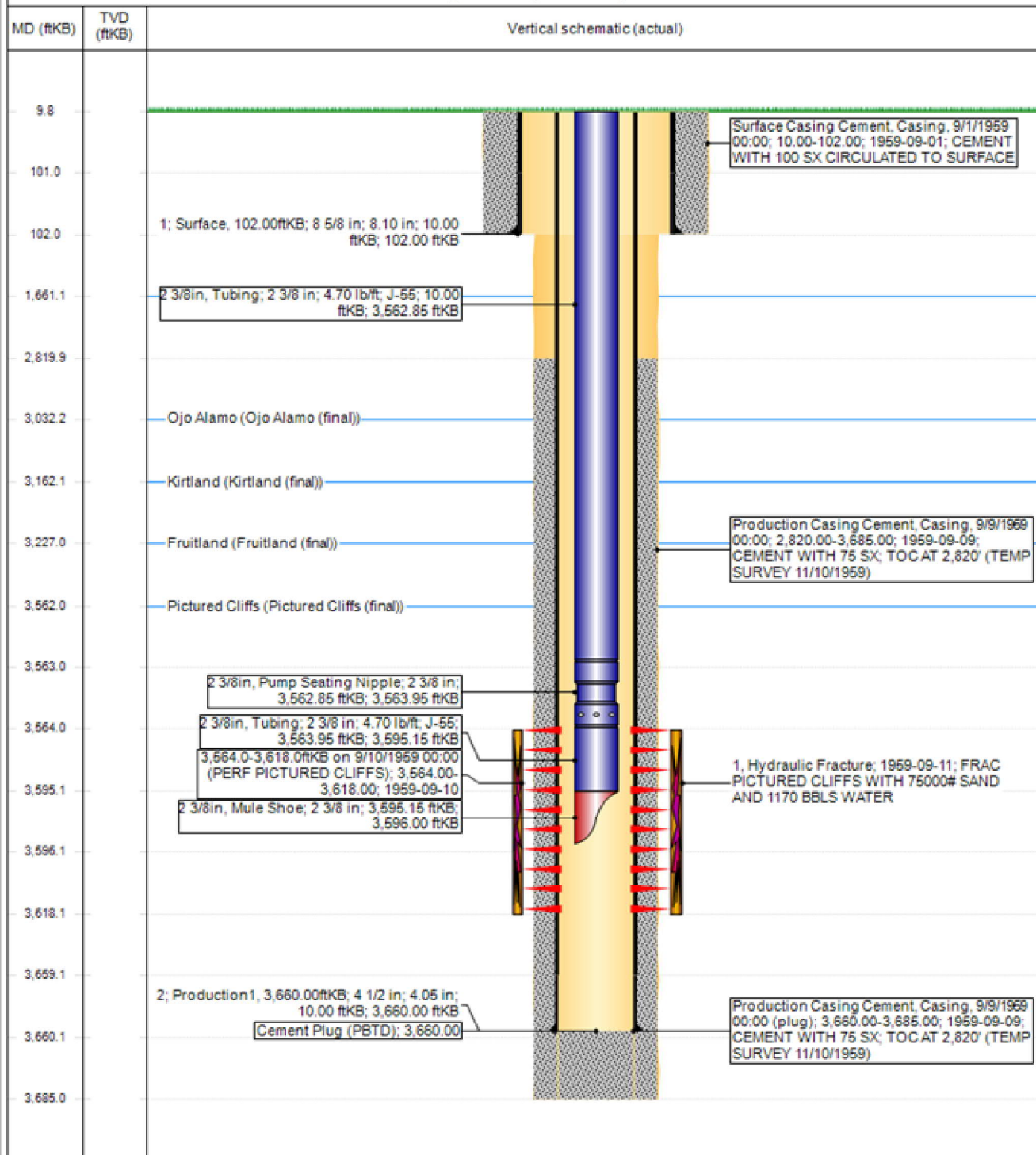
Hilcorp Energy Company

## Current Schematic - Completion Comments

Well Name: ARIZONA JICARILLA #3

API / UWI 3003905716	Surface Legal Location 035-025N-004W-1	Field Name BLANCO P.C. SOUTH (GAS)	Route 1411	State/Province NEW MEXICO	Well Configuration Type VERTICAL
Ground Elevation (ft) 7,270.00	Original KB/RT Elevation (ft) 7,280.00	KB-Ground Distance (ft) 10.00	KB-Casing Flange Distance (ft)	KB-Tubing Hanger Distance (ft)	

## Original Hole [VERTICAL]



www.peloton.com

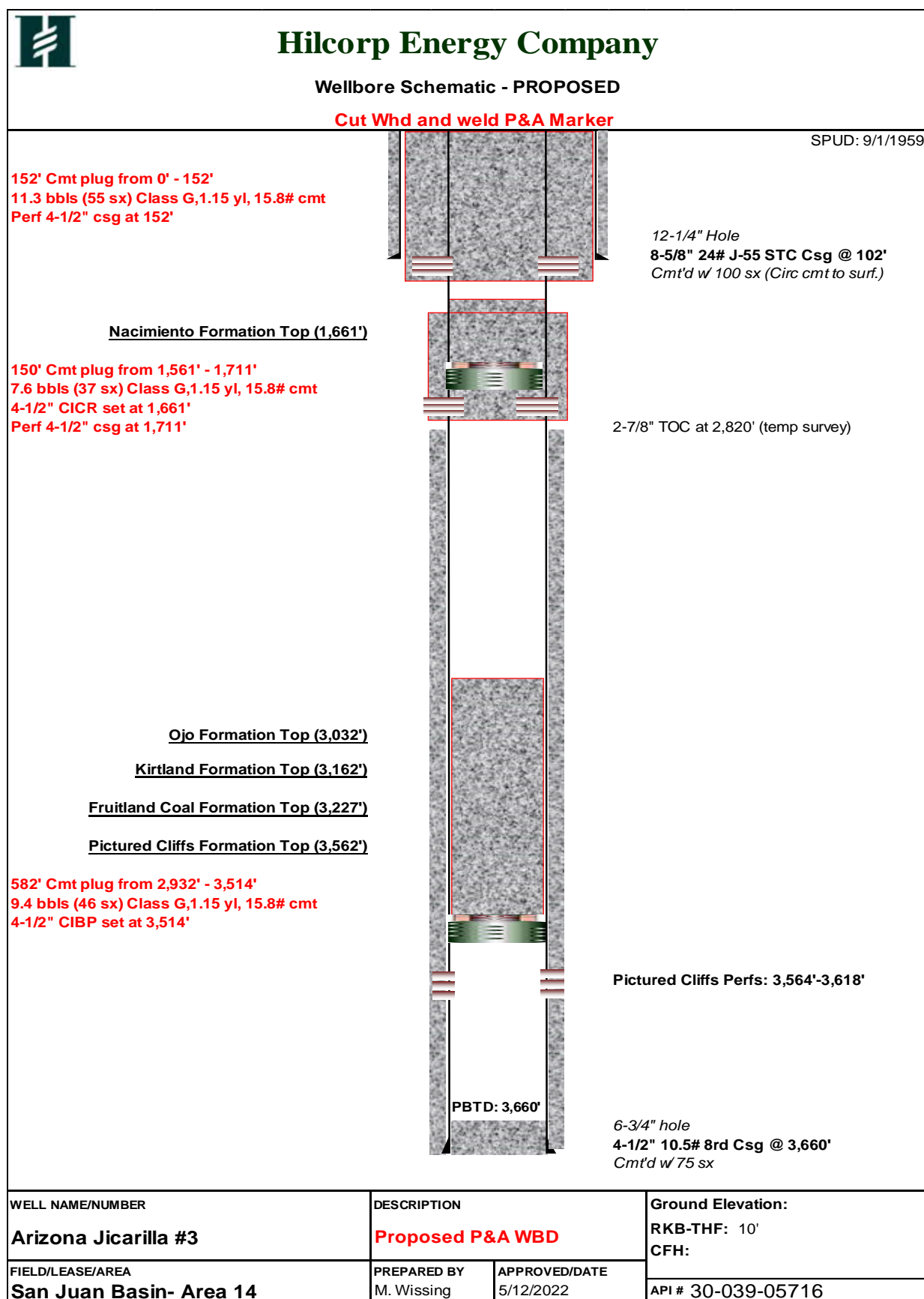
Page 1/1

Report Printed: 5/12/2022



Hilcorp Energy Company

## PROPOSED P&amp;A WELLBORE SCHEMATIC





## Hilcorp Energy

Arizona Jicarilla Unit 3

36.35356, -107.21581

API-30-039-05716

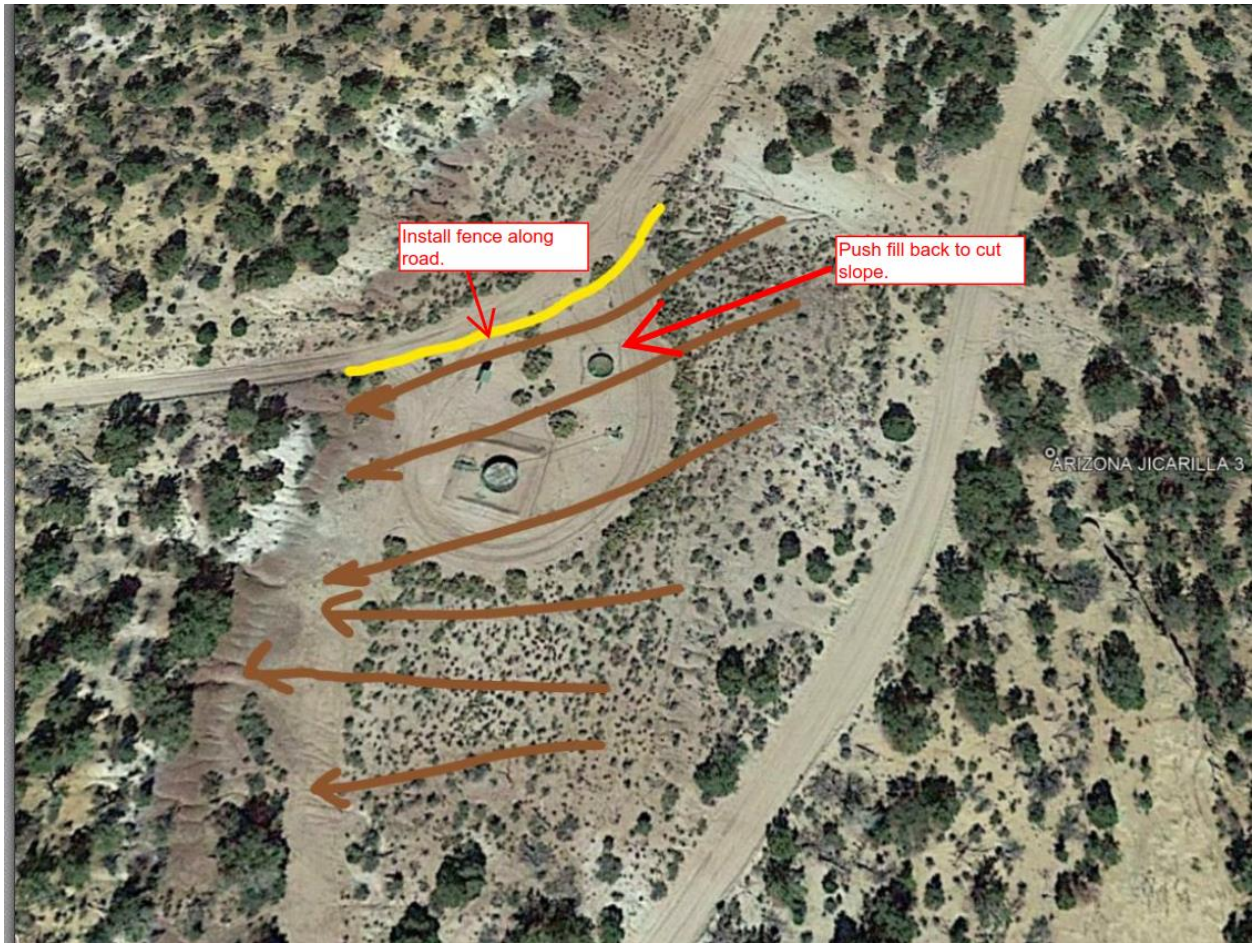
Jicarilla Lease #97

### Final Reclamation Plan

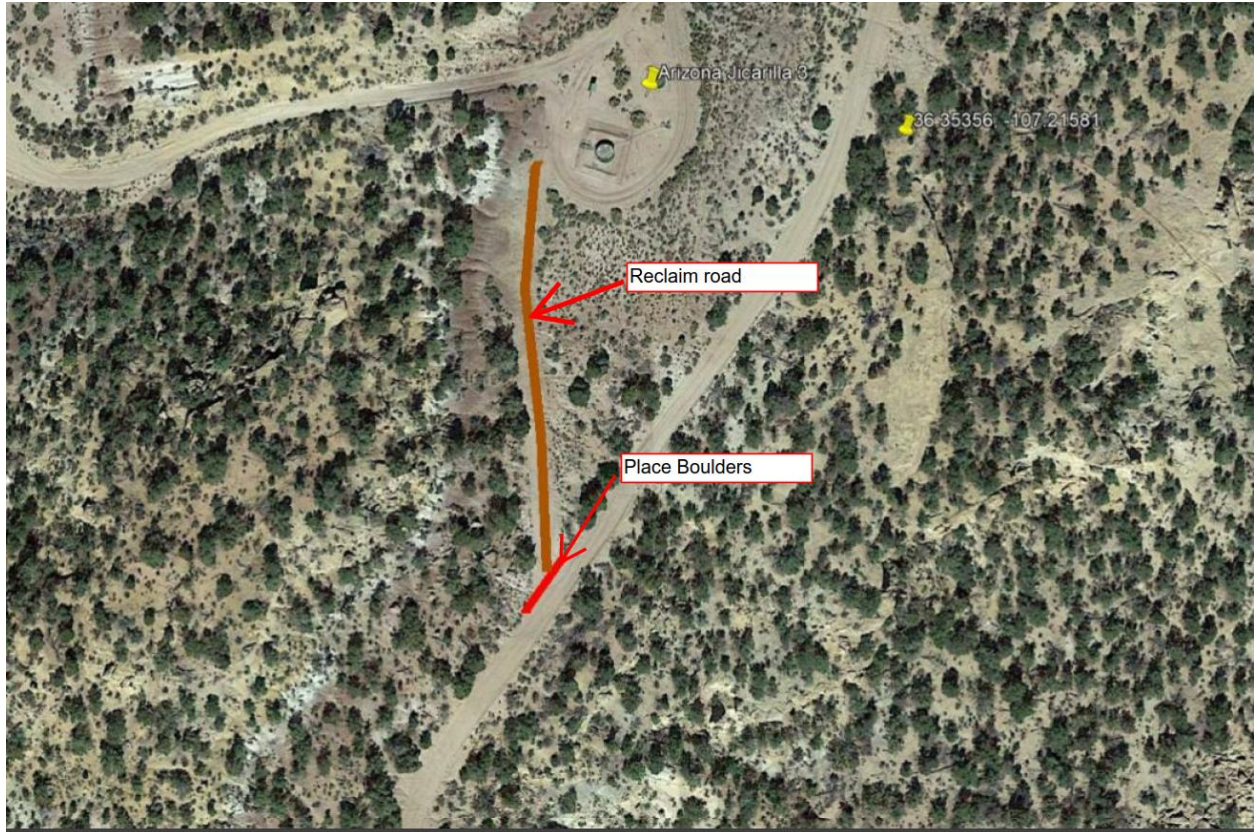
Onsite 4/19/2022 with Kurt Sandoval, Alfred Vigil, Lloyd Bell, Bryan Hall.

1. Pick up and remove all trash, metal, cable, and any foreign debris within 200' of location.
2. Remove anchors.
3. Strip equipment off of facility.
4. Harvest to remove meter run and cut and cap pipe across the road.
5. Re-contour pad to re-create natural terrain. Push material towards the West/south-west side of location.
6. Reclaim road entering the south side of location, block with boulders.
7. Set surface wellhead marker plate.
8. Leave road on west side of location for access to the next well. Install fence along road on the location side. Rip compacted soil.
9. Re-seed all disturbed areas. Drill where applicable at rate per acre defined by seed mix, and broadcast seed and harrow, at double the rate, all other disturbed areas. Mesa Mix seed mix will be used.











**GENERAL REQUIREMENTS FOR  
PERMANENT ABANDONMENT OF WELLS ON FEDERAL AND INDIAN LEASES  
FARMINGTON FIELD OFFICE**

- 1.0 The approved plugging plans may contain variances from the following minimum general requirements.
- 1.1 Modification of the approved plugging procedure is allowed only with the prior approval of the Authorized Officer, Farmington Field Office.
  - 1.2 Requirements may be added to address specific well conditions.
- 2.0 Materials used must be accurately measured. (densometer/scales)
- 3.0 A tank or lined pit must be used for containment of any fluids from the wellbore during plugging operations and all pits are to be fenced with woven wire. These pits will be fenced on three sides and once the rig leaves location, the fourth side will be fenced.
- 3.1 Pits are not to be used for disposal of any hydrocarbons. If hydrocarbons are present in the pit, the fluids must be removed prior to filling in.
- 4.0 All cement plugs are to be placed through a work string. Cement may be bull-headed down the casing with prior approval. Cement caps on top of bridge plugs or cement retainers may be placed by dump bailer.
- 4.1 The cement shall be as specified in the approved plugging plan.
  - 4.2 All cement plugs placed inside casing shall have sufficient volume to fill a minimum of 100' of the casing, or annular void(s) between casings, plus an excess volume sufficient to provide for 50 linear feet of fill above the plug.
  - 4.3 Surface plugs may be no less than 50' in length.
  - 4.4 All cement plugs placed to fill annular void(s) between casing and the formation shall be of sufficient volume to fill a minimum of 100' of the annular space plus 100% excess, calculated using the bit size, or 100' of annular capacity, determined from a caliper log, plus an excess volume sufficient to provide for 50 linear feet of fill above the plug.
  - 4.5 All cement plugs placed to fill an open hole shall be of sufficient volume to fill a minimum of 100' of hole, as calculated from a caliper log, plus an excess volume sufficient to provide for 50 linear feet of fill above the plug. In the absence of a caliper log, an excess of 100% shall be required.
  - 4.6 **A cement bond log or other accepted cement evaluation tool is required to be run if one had not been previously ran or cement did not circulate to surface during the original casing cementing job or subsequent cementing jobs.**



5.0 All cement plugs spotted across, or above, any exposed zone(s), when; the wellbore is not full of fluid or the fluid level will not remain static, and in the case of lost circulation or partial returns during cement placement, shall be tested by tagging with the work string.

- 5.1 The top of any cement plug verified by tagging must be at or above the depth specified in the approved plan, without regard to any excess.
- 5.2 Testing will not be required for any cement plug that is mechanically contained by use of a bridge plug and/or cement retainer, if casing integrity has been established.
- 5.3 Any cement plug which is the only isolating medium, for a fresh water interval or a zone containing a prospectively valuable deposit of minerals, shall be tested by tagging.
- 5.4 If perforations are required below the surface casing shoe, a 30 minute minimum wait time will be required to determine if gas and/or water flows are present. If flow is present, the well will be shut-in for a minimum of one hour and the pressure recorded. Short or long term venting may be necessary to evacuate trapped gas. **If only a water flow occurs with no associated gas, shut well in and record the pressures. Contact the Engineer as it may be necessary to change the cement weight and additives.**

6.0 Before setting any cement plugs the hole needs to be rolled. All wells are to be controlled by means of a fluid that is to be of a weight and consistency necessary to stabilize the wellbore. This fluid shall be left in place as filler between all plugs.

- 6.1 Drilling mud may be used as the wellbore fluid in open hole plugging operations.
- 6.2 The wellbore fluid used in cased holes shall be of sufficient weight to balance known pore pressures in all exposed formations.

7.0 A blowout preventer and related equipment (BOPE) shall be installed and tested prior to working in a wellbore with any exposed zone(s); (1) that are over pressured, (2) where the pressures are unknown, or (3) known to contain H<sub>2</sub>S.

8.0 Within 30 days after plugging work is completed, file a Sundry Notice, Subsequent Report of Abandonment (Form 3160-5), five copies, with the Field Manager, Bureau of Land Management, 6251 College Blvd., Suite A, Farmington, NM 87402. The report should show the manner in which the plugging work was carried out, the extent, by depth(s), of cement plugs placed, and the size and location, by depth(s), of casing left in the well. Show date well was plugged.

9.0 All permanently abandoned wells are to be marked with a permanent monument as specified in 43 CFR 3162.6(d). Unless otherwise approved.

10.0 If this well is located in a Specially Designated Area (SDA), compliance with the appropriate seasonal closure requirements will be necessary.

All of the above are minimum requirements. Failure to comply with the above conditions of approval may result in an assessment for noncompliance and/or a Shut-in Order being issued pursuant to 43 CFR 3163.1. You are further advised that any instructions, orders or decisions issued by the Bureau of Land Management are subject to administrative review pursuant to 43 CFR 3165.3 and appeal pursuant to 43 CFR 3165.4 and 43 CFR 4.700.

(October 2012 Revision)

**BLM - FFO - Geologic Report****Date Completed**

6/16/2022

Well No.	Arizona Jicarilla	# 3	Surf. Loc.	1640	FSL	1045	FEL
			Sec.	35	T25N		R4W
Lease No.	Jic 125						
Operator	Hilcorp Energy Co.		County	Rio Arriba	State		New Mexico
TVD	3685	PBTD	3660	Formation	Pictured Cliffs		
Elevation	GL		7270	Elevation	Est. KB	7277	

<b>Geologic Formations</b>	<b>Est. tops</b>	<b>Subsea Elev.</b>	<b>Remarks</b>
San Jose	Surface		Surface
Nacimiento Fm.	1661	5616	Fresh water sands
Ojo Alamo Ss	2885	4392	Aquifer (fresh water)
Kirtland Fm.	3225	4052	
Fruitland Fm.	3428	3849	Coal/gas/possible water
Pictured Cliffs Ss	3562	3715	Probable water

Remarks:Reference Well:

-Note that the well is in Rio Arriba county, the operations plan lists San Juan.

-Extend Plug 1 to cover the BLM Ojo Alamo top at 2885'.

Same

Prepared by: Walter Gage

**UNITED STATES DEPARTMENT OF THE INTERIOR  
BUREAU OF LAND MANAGEMENT  
FARMINGTON DISTRICT OFFICE  
6251 COLLEGE BLVD.  
FARMINGTON, NEW MEXICO 87402**

AFMSS 2 Sundry ID 2671631

Attachment to notice of Intention to Abandon

Well: Arizona Jicarilla 3

**CONDITIONS OF APPROVAL**

1. Plugging operations authorized are subject to the attached "General Requirements for Permanent Abandonment of Wells on Federal and Indian Lease."
2. The following modifications to your plugging program are to be made:
  - a) Extend Plug 1 to cover the BLM Ojo Alamo top at 2885'.
3. Farmington Office is to be notified at least 24 hours before the plugging operations commence at (505) 564-7750.

You are also required to place cement excesses per 4.2 and 4.4 of the attached General Requirements.

Office Hours: 7:45 a.m. to 4:30 p.m.

K. Rennick 06/16/2022



**District I**  
1625 N. French Dr., Hobbs, NM 88240  
Phone:(575) 393-6161 Fax:(575) 393-0720  
**District II**  
811 S. First St., Artesia, NM 88210  
Phone:(575) 748-1283 Fax:(575) 748-9720  
**District III**  
1000 Rio Brazos Rd., Aztec, NM 87410  
Phone:(505) 334-6178 Fax:(505) 334-6170  
**District IV**  
1220 S. St Francis Dr., Santa Fe, NM 87505  
Phone:(505) 476-3470 Fax:(505) 476-3462

**State of New Mexico**  
**Energy, Minerals and Natural Resources**  
**Oil Conservation Division**  
**1220 S. St Francis Dr.**  
**Santa Fe, NM 87505**

CONDITIONS  
  
Action 118287

CONDITIONS

Operator: HILCORP ENERGY COMPANY 1111 Travis Street Houston, TX 77002	OGRID: 372171
	Action Number: 118287
	Action Type: [C-103] NOI Plug & Abandon (C-103F)

CONDITIONS

Created By	Condition	Condition Date
kpickford	CBL required	6/22/2022
kpickford	Notify NMOCD 24 Hours Prior to beginning operations	6/22/2022
kpickford	Adhere to BLM approved plugs and COAs. See GEO Report	6/22/2022