

Submit a Copy To Appropriate District
Office
District I – (575) 393-6161
1625 N. French Dr., Hobbs, NM 88240
District II – (575) 748-1283
811 S. First St., Artesia, NM 88210
District III – (505) 334-6178
1000 Rio Brazos Rd., Aztec, NM 87410
District IV – (505) 476-3460
1220 S. St. Francis Dr., Santa Fe, NM
87505

State of New Mexico
Energy, Minerals and Natural Resources

Form C-103
Revised July 18, 2013

OIL CONSERVATION DIVISION
1220 South St. Francis Dr.
Santa Fe, NM 87505

WELL API NO. 30-025-22521
5. Indicate Type of Lease STATE <input checked="" type="checkbox"/> FEE <input type="checkbox"/>
6. State Oil & Gas Lease No.
7. Lease Name or Unit Agreement Name Guy Hooper Com
8. Well Number 1
9. OGRID Number 18917
10. Pool name or Wildcat 55610 Scharb; BS
11. Elevation (Show whether DR, RKB, RT, GR, etc.)

SUNDRY NOTICES AND REPORTS ON WELLS (DO NOT USE THIS FORM FOR PROPOSALS TO DRILL OR TO DEEPEN OR PLUG BACK TO A DIFFERENT RESERVOIR. USE "APPLICATION FOR PERMIT" (FORM C-101) FOR SUCH PROPOSALS.)	
1. Type of Well: Oil Well <input checked="" type="checkbox"/> Gas Well <input type="checkbox"/> Other <input type="checkbox"/>	
2. Name of Operator Read & Stevens, Inc.	
3. Address of Operator PO Box 1518, Roswell, NM 88202	
4. Well Location Unit Letter <u>K</u> : <u>980</u> feet from the <u>South</u> line and <u>1967</u> feet from the <u>West</u> line Section <u>7</u> Township <u>19S</u> Range <u>35E</u> NMPM County <u>Lea</u>	
11. Elevation (Show whether DR, RKB, RT, GR, etc.)	

12. Check Appropriate Box to Indicate Nature of Notice, Report or Other Data

NOTICE OF INTENTION TO:		SUBSEQUENT REPORT OF:	
PERFORM REMEDIAL WORK <input type="checkbox"/>	PLUG AND ABANDON <input type="checkbox"/>	REMEDIAL WORK <input type="checkbox"/>	ALTERING CASING <input type="checkbox"/>
TEMPORARILY ABANDON <input type="checkbox"/>	CHANGE PLANS <input type="checkbox"/>	COMMENCE DRILLING OPNS. <input type="checkbox"/>	P AND A <input checked="" type="checkbox"/>
PULL OR ALTER CASING <input type="checkbox"/>	MULTIPLE COMPL <input type="checkbox"/>	CASING/CEMENT JOB <input type="checkbox"/>	PNR <input type="checkbox"/>
DOWNHOLE COMMINGLE <input type="checkbox"/>			
CLOSED-LOOP SYSTEM <input type="checkbox"/>			
OTHER: <input type="checkbox"/>		OTHER: <input type="checkbox"/>	

13. Describe proposed or completed operations. (Clearly state all pertinent details, and give pertinent dates, including estimated date of starting any proposed work). SEE RULE 19.15.7.14 NMAC. For Multiple Completions: Attach wellbore diagram of proposed completion or recompletion.

Please see attached plugging report and pictures of standard dry hole marker.

Spud Date:

4/12/1968

Rig Release Date:

I hereby certify that the information above is true and complete to the best of my knowledge and belief.

SIGNATURE Kelly Barajas TITLE Production Reporting DATE 04/27/2022

Type or print name Kelly Barajas E-mail address: kbarajas@read-stevens.com PHONE: 575-624-3760

For State Use Only

APPROVED BY: Kerry Fortner TITLE Compliance Officer A DATE 6/17/22
Conditions of Approval: ---

Plugging Report

Read & Stevens, In.

Guy Hooper Com #1

API 30-025-22521

1/31/2022 Moved in equipment. Bled off the well and dug out cellar around the wellhead. Plumbed in surface and intermediate heads to the steel pit. Installed BOP and start out of the hole with the tubing.

2/1/2022 Finished pulling tubing. 312 jts 2 3/8" tubing. Made gauge ring run and set 4.5" CIBP at 9700'. Circulated MLF and tested casing to 500#. Casing is good. Spot 25 sx Class H cement on top of CIBP. POOH and SION.

2/2/2022 Tagged cement at 9337'. Spot 25 sx Class H cement at 7910' with CaCl. WOC and tagged cement at 7589'. Started pulling tubing to spot the next plug and found that tubing was plugged. Tripped tubing and laid down plugged joints. RIH to 5812' and SION

2/4/2022 Spot 25 sx Class C cement at 5812' with CaCl. WOC and tagged cement at 5453'. POOH and perforated casing at 4048'. Set packer and pressured up on perfs to 1000# and held. Bled off at the truck and repeated the process. Perforation will not take fluid. POOH with packer and RIH with tubing to 4125' and spot 25 sx cement across the perforations. POOH and SION.

2/7/2022 Tagged cement at 3785'. Spot 25 sx cement at 3250' with CaCl. WOC and tagged at 2909' Spot 25 sx cement at 1880' with CaCl. WOC and tagged at 1513'. Perforated casing at 424'. Set packer at 62' and broke down perfs. 1.5 bbl/min at 500#. Communication with the surface head but not the intermediate head. Squeezed with 50 sx cement. Left packer set and SION.

2/8/2022 Tagged cement at 276'. Oil was present at the surface head. Perforated casing at 100'. Circulated the oil off of the surface head. Still no communication with the intermediate head. Circulated cement down the 4 1/2" casing to the perfs at 100' and up the surface annulus to the pit. Took 40 sx. Rigged down and dug out. Removed wellhead. Good cement to surface in all strings of casing. Installed standard marker. Removed the anchors and cleaned the pit.

Read & Stevens Inc



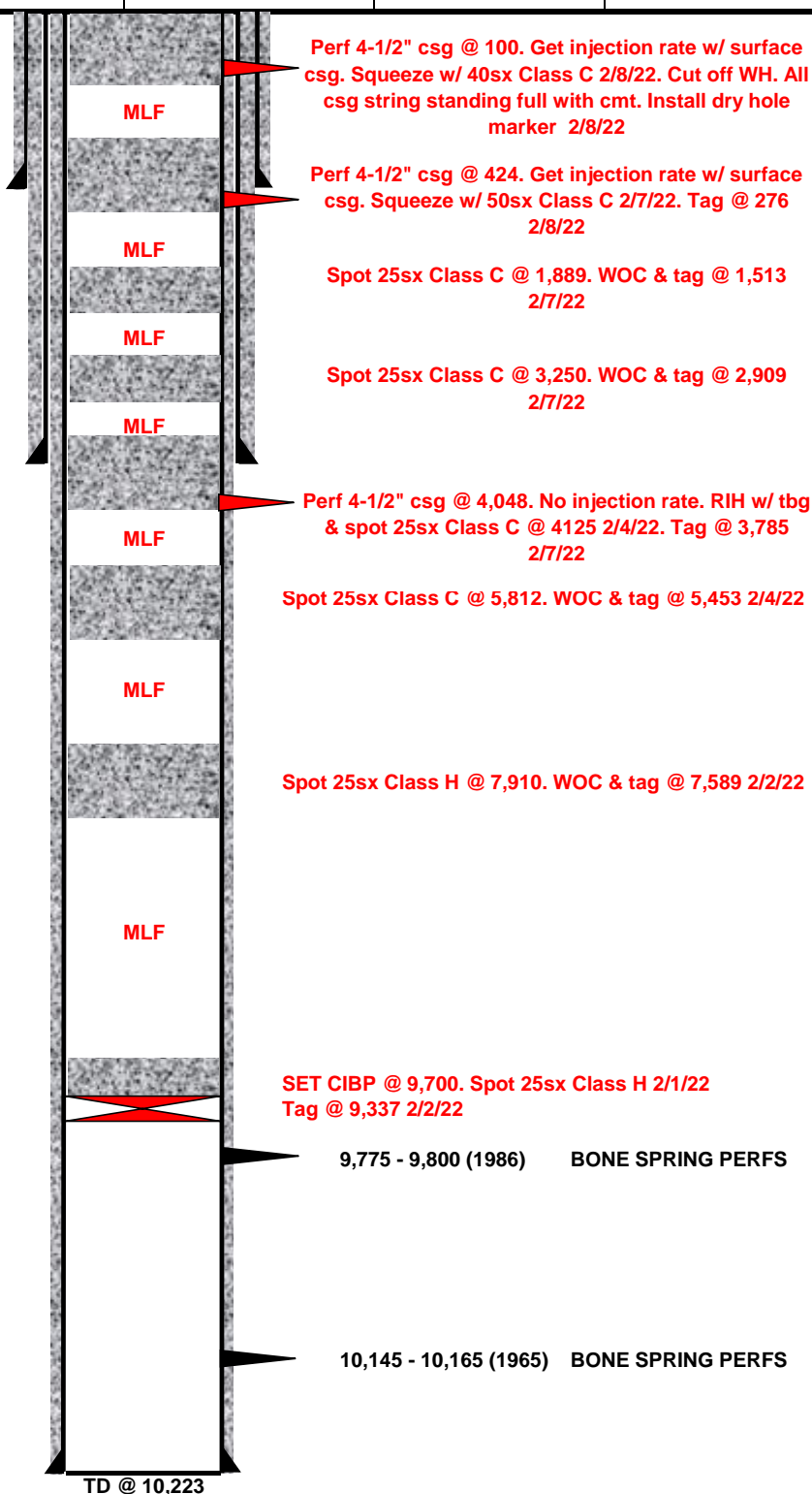
Well Name: Guy Hooper Com #1		Field: Scharb; Bone Spring	
Location: 1980' FSL & 1967' FWL; 7-19S-35E		County: Lea	State: NM
Elevation: 3,892' GL		Spud Date: 4/12/68	Compl Date: 8/1/86
API#: 30-025-22521	Prepared by: KALE JACKSON	Date: 10/8/21	Rev: 2/14/22

PLUGGED SCHEMATIC

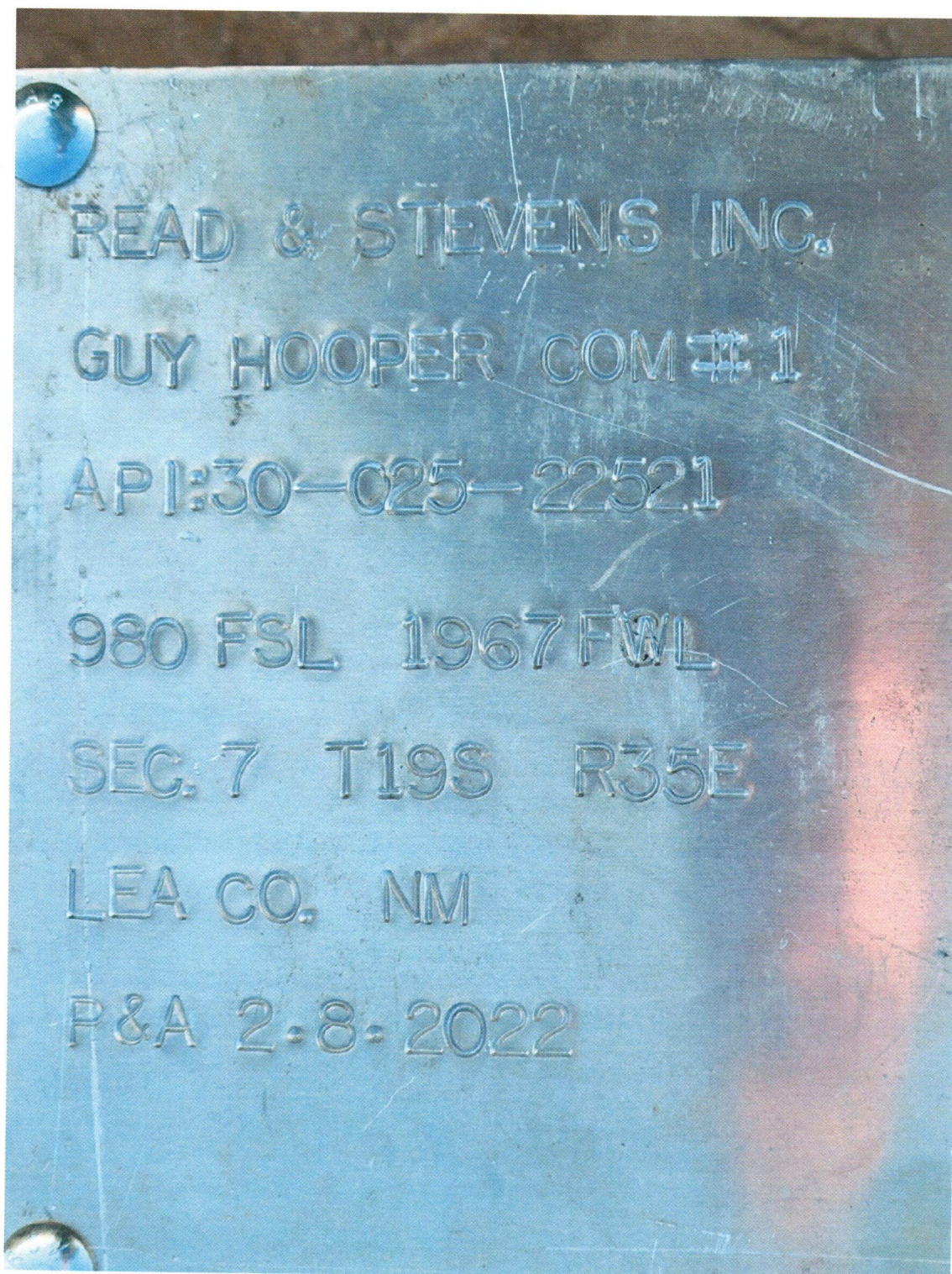
SURFACE			
HOLE SIZE	CASING SIZE	DEPTH SET	CMT TOP
15"	12-3/4"	374'	SURFACE
38# H-40 CSG			

INTERMEDIATE			
HOLE SIZE	CASING SIZE	DEPTH SET	CMT PUMP
11"	8-5/8"	3,998'	250 SX
24#; 32#; & 28# J-55 CSG			

PRODUCTION			
HOLE SIZE	CASING SIZE	DEPTH SET	CMT PUMP
7-7/8"	4-1/2"	10,223'	200 SX
11.6# J-55 & N-80 CSG			



NOTE: DRAWING NOT TO SCALE



Plugging Report

Read & Stevens, In.

Guy Hooper Com #1

API 30-025-22521

1/31/2022 Moved in equipment. Bled off the well and dug out cellar around the wellhead. Plumbed in surface and intermediate heads to the steel pit. Installed BOP and start out of the hole with the tubing.

2/1/2022 Finished pulling tubing. 312 jts 2 3/8" tubing. Made gauge ring run and set 4.5" CIBP at 9700'. Circulated MLF and tested casing to 500#. Casing is good. Spot 25 sx Class H cement on top of CIBP. POOH and SION.

2/2/2022 Tagged cement at 9337'. Spot 25 sx Class H cement at 7910' with CaCl. WOC and tagged cement at 7589'. Started pulling tubing to spot the next plug and found that tubing was plugged. Tripped tubing and laid down plugged joints. RIH to 5812' and SION

2/4/2022 Spot 25 sx Class C cement at 5812' with CaCl. WOC and tagged cement at 5453'. POOH and perforated casing at 4048'. Set packer and pressured up on perfs to 1000# and held. Bled off at the truck and repeated the process. Perforation will not take fluid. POOH with packer and RIH with tubing to 4125' and spot 25 sx cement across the perforations. POOH and SION.

2/7/2022 Tagged cement at 3785'. Spot 25 sx cement at 3250' with CaCl. WOC and tagged at 2909' Spot 25 sx cement at 1880' with CaCl. WOC and tagged at 1513'. Perforated casing at 424'. Set packer at 62' and broke down perfs. 1.5 bbl/min at 500#. Communication with the surface head but not the intermediate head. Squeezed with 50 sx cement. Left packer set and SION.

2/8/2022 Tagged cement at 276'. Oil was present at the surface head. Perforated casing at 100'. Circulated the oil off of the surface head. Still no communication with the intermediate head. Circulated cement down the 4 1/2" casing to the perfs at 100' and up the surface annulus to the pit. Took 40 sx. Rigged down and dug out. Removed wellhead. Good cement to surface in all strings of casing. Installed standard marker. Removed the anchors and cleaned the pit.

Read & Stevens Inc



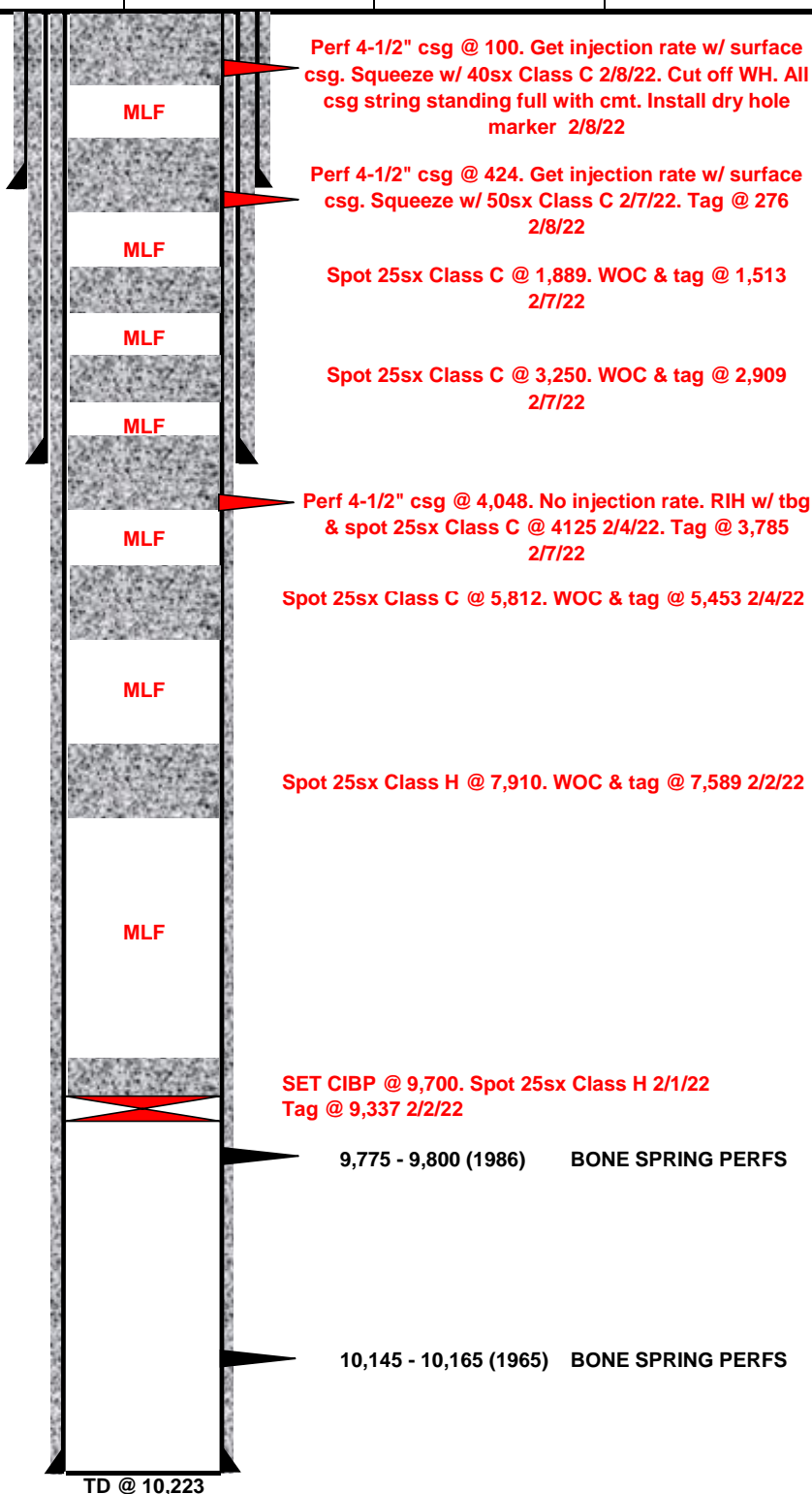
Well Name: Guy Hooper Com #1		Field: Scharb; Bone Spring	
Location: 1980' FSL & 1967' FWL; 7-19S-35E		County: Lea	State: NM
Elevation: 3,892' GL		Spud Date: 4/12/68	Compl Date: 8/1/86
API#: 30-025-22521	Prepared by: KALE JACKSON	Date: 10/8/21	Rev: 2/14/22

PLUGGED SCHEMATIC

SURFACE			
HOLE SIZE	CASING SIZE	DEPTH SET	CMT TOP
15"	12-3/4"	374'	SURFACE
38# H-40 CSG			

INTERMEDIATE			
HOLE SIZE	CASING SIZE	DEPTH SET	CMT PUMP
11"	8-5/8"	3,998'	250 SX
24#; 32#; & 28# J-55 CSG			

PRODUCTION			
HOLE SIZE	CASING SIZE	DEPTH SET	CMT PUMP
7-7/8"	4-1/2"	10,223'	200 SX
11.6# J-55 & N-80 CSG			



NOTE: DRAWING NOT TO SCALE

District I
1625 N. French Dr., Hobbs, NM 88240
Phone:(575) 393-6161 Fax:(575) 393-0720
District II
811 S. First St., Artesia, NM 88210
Phone:(575) 748-1283 Fax:(575) 748-9720
District III
1000 Rio Brazos Rd., Aztec, NM 87410
Phone:(505) 334-6178 Fax:(505) 334-6170
District IV
1220 S. St Francis Dr., Santa Fe, NM 87505
Phone:(505) 476-3470 Fax:(505) 476-3462

State of New Mexico
Energy, Minerals and Natural Resources
Oil Conservation Division
1220 S. St Francis Dr.
Santa Fe, NM 87505

COMMENTS

Action 101967

COMMENTS

Operator: READ & STEVENS INC P.O. Box 1518 Roswell, NM 88202	OGRID: 18917
	Action Number: 101967
	Action Type: [C-103] Sub. Plugging (C-103P)

COMMENTS

Created By	Comment	Comment Date
plmartinez	DATA ENTRY PM	6/23/2022

District I
1625 N. French Dr., Hobbs, NM 88240
Phone:(575) 393-6161 Fax:(575) 393-0720
District II
811 S. First St., Artesia, NM 88210
Phone:(575) 748-1283 Fax:(575) 748-9720
District III
1000 Rio Brazos Rd., Aztec, NM 87410
Phone:(505) 334-6178 Fax:(505) 334-6170
District IV
1220 S. St Francis Dr., Santa Fe, NM 87505
Phone:(505) 476-3470 Fax:(505) 476-3462

State of New Mexico
Energy, Minerals and Natural Resources
Oil Conservation Division
1220 S. St Francis Dr.
Santa Fe, NM 87505

CONDITIONS

Action 101967

CONDITIONS

Operator: READ & STEVENS INC P.O. Box 1518 Roswell, NM 88202	OGRID: 18917
	Action Number: 101967
	Action Type: [C-103] Sub. Plugging (C-103P)

CONDITIONS

Created By	Condition	Condition Date
kfortner	Need C103Q and marker pics to release	6/17/2022