

Submit a Copy To Appropriate District
Office
District I – (575) 393-6161
1625 N. French Dr., Hobbs, NM 88240
District II – (505) 748-1283
811 S. First St., Artesia, NM 88210
District III – (505) 334-6178
1000 Rio Brazos Rd., Aztec, NM 87410
District IV – (505) 476-3460
1220 S. St. Francis Dr., Santa Fe, NM
87505

State of New Mexico
Energy, Minerals and Natural Resources

Form C-103
Revised July 18, 2013

OIL CONSERVATION DIVISION
1220 South St. Francis Dr.
Santa Fe, NM 87505

WELL API NO.	30-015-34742
5. Indicate Type of Lease STATE <input checked="" type="checkbox"/> FEE <input type="checkbox"/>	
6. State Oil & Gas Lease No.	
7. Lease Name or Unit Agreement Name	CONTINENTAL A STATE
8. Well Number	11
9. OGRID Number	328947
10. Pool name or Wildcat	EMPIRE; GLORIETA-YESO

SUNDRY NOTICES AND REPORTS ON WELLS (DO NOT USE THIS FORM FOR PROPOSALS TO DRILL OR TO DEEPEN OR PLUG BACK TO A DIFFERENT RESERVOIR. USE "APPLICATION FOR PERMIT" (FORM C-101) FOR SUCH PROPOSALS.)	
1. Type of Well: Oil Well <input type="checkbox"/> Gas Well <input checked="" type="checkbox"/> Other INJECTION	
2. Name of Operator SPUR ENERGY PARTNERS LLC	
3. Address of Operator 9655 KATY FREEWAY, SUITE 500, HOUSTON, TX 77024	
4. Well Location Unit Letter <u>F</u> : <u>1450</u> feet from the <u>NORTH</u> line and <u>1907</u> feet from the <u>WEST</u> line Section <u>30</u> Township <u>17S</u> Range <u>29E</u> NMPM EDDY County	
11. Elevation (Show whether DR, RKB, RT, GR, etc.) 3648' GR	

12. Check Appropriate Box to Indicate Nature of Notice, Report or Other Data

NOTICE OF INTENTION TO:		SUBSEQUENT REPORT OF:	
PERFORM REMEDIAL WORK <input type="checkbox"/>	PLUG AND ABANDON <input type="checkbox"/>	REMEDIAL WORK <input type="checkbox"/>	ALTERING CASING <input type="checkbox"/>
TEMPORARILY ABANDON <input type="checkbox"/>	CHANGE PLANS <input type="checkbox"/>	COMMENCE DRILLING OPNS. <input type="checkbox"/>	P AND A <input checked="" type="checkbox"/>
PULL OR ALTER CASING <input type="checkbox"/>	MULTIPLE COMPL <input type="checkbox"/>	CASING/CEMENT JOB <input type="checkbox"/>	
DOWNHOLE COMMINGLE <input type="checkbox"/>			
CLOSED-LOOP SYSTEM <input type="checkbox"/>			
OTHER: <input type="checkbox"/>		OTHER: <input type="checkbox"/>	

13. Describe proposed or completed operations. (Clearly state all pertinent details, and give pertinent dates, including estimated date of starting any proposed work). SEE RULE 19.15.7.14 NMAC. For Multiple Completions: Attach wellbore diagram of proposed completion or recompletion.

Please find final P&A procedure and plugged WBD attached for your use.

Approved for plugging of well bore only. Liability under bond is retained pending Location cleanup & receipt of C-103Q (Subsequent Report of Well Plugging) which may be found at OCD Web Page, OCD Permitting @ www.emnrd.state.nm.us

Spud Date:

Rig Release Date:

I hereby certify that the information above is true and complete to the best of my knowledge and belief.

SIGNATURE Sarah Chapman TITLE REGULATORY DIRECTOR DATE 06/03/2022

Type or print name SARAH CHAPMAN E-mail address: SCHAPMAN@SPURENERGY.COM PHONE: 832-930-8613

For State Use Only

APPROVED BY: [Signature] TITLE Staff Manager DATE 6/7/2022
Conditions of Approval (if any):

Start Date	End Date	Summary
5/17/2022	5/17/2022	Move in equipment and spot in place, rig up derrick, ND WH, tie back tubing line, PU 70k to remove slips, install 8-5/8" wellhead flange, NU BOP, Secure well and SDFN.
5/18/2022	5/18/2022	Drove to location, attempted to unset packers without success, attempted to pump down the backside but pressured up after 1 bbl, able to pump down tubing, decided to rig up wireline and shoot circulating holes above top packer, RIH and perf tubing @ 3790', POOH RD wireline, continue trying to release packers without success, notified OCD and they suggested to try power swivel, power swivel will be out in the morning, secure well and SDFN.
5/19/2022	5/19/2022	Drove to location, PJSM, RU power swivel, Start working to free up the packers, got packers free, start pulling out slow, had some drag on the way out, got out w/ all tubing and packers, RU WL, RIH and set CIBP @ 3876', POOH RD WL, Start in with pipe, tag CIBP, RU pump and circulate the well with fresh water, POOH, RU JSI wireline and run CBL from CIBP to surface, RD JSI WL, Secure the well and SDFN.
5/24/2022	5/24/2022	Drove to location, PJSM, RIH and tag CIBP, RU pump, circulate well with 90 bbl of 10# gelled brine, wait on freshwater, freshwater arrived, mix and pump plug #1 25 sx of class C cement, displaced w/ 20.9 bbl, pull 8 stands, SD due to bad weather, wait for it to pass, continue POOH, pulled 20 stands total, secure well and SDFN.
5/25/2022	5/25/2022	Drove to location, PJSM, RIH and tag plug #1 @ 3659', POOH LD 12 jts, RU hose and break circulation, mix and pump plug #2 25 sx of Class C cmt from 3495', displace w/ 18.7 bbl, pull 20 stands and WOC, RIH and tag plug #2 @ 3270', POOH LD 33 jts, mix and pump plug #3 25 sx of class C cement from 2422'-2170', displace w/ 12.5 bbl, POOH LD 10 jts, break circulation, mix and pump plug #4 25 sx of class C cement from 2100'-1848', displace w/ 10.6 bbl, POOH LD 12 jts, mix and pump plug #5 25 sx of class C cement from 1711'-1463', displace w/ 8.4 bbl, pull all pipe to the derrick, secure the well and SDFN.
5/26/2022	5/26/2022	Drove to location, PJSM, RIH and tag plug #5 @ 1463', POOH LD 19 jts, RU hose, break circulation, mix and pump plug #6 20 sx of class C cement from 1098'-896', displace w/ 5.1 bbls, POOH LD 12 jts, RU WL, RIH and perf @ 850', POOH and RD WL, RIH w/ packer and set @ 500', check injection rate, pressure up to 500 psi and hold for 5 min, Call OCD and David Alvarado approved to drop 50' below perms and spot 25 sx, mix and pump plug #7 25 sx of class C cement from 904', displace w/ 3.7 bbl, POOH and WOC, RIH and tag Plug #7 @ 695', POOH, RU WL, RIH and perf @ 374', POOH and RD WL, RIH w/ packer and set at 200', check injection rate, pressure up to 500 psi and held for 5 min, POOH, RU WL, RIH and perf @ 200', POOH and RD WL, RIH w/ packer and set @ 100', check injection rate, pressure up to 500 psi and held, notify OCD, OCD ok'd us to drop to 424' and pump plug to surface, mix and pump plug #8 45 sx of class C cement from 424' to surface, secure well and SDFN.
5/27/2022	5/27/2022	Drove to location, PJSM, RD Floor, ND BOP, verify cement to surface, RD Derrick and all equipment, move to next well.

API #	30-015-34742	Continental A State #11	County, ST	Eddy County, NM
Operator	Spur Energy Partners		Sec-Twin-Rng	30-17S-29E
Field	Empire; Glorieta-Yeso		Footage	1450 FNL 1907 FWL
Spud Date	8/14/2006		Survey	32.808876 -104.1152802

Formation (MD)	
Yates	783
7 Rivers	1030
Queen	1639
Grayburg	2050
San Andres	2363
Glorieta	3816

RKB	
GL	3648

Hole Size	17-1/2"
TOC	Surface
Method	Circ 102 sx

Csg Depth	324'
Size	13-3/8"
Weight	48
Grade	H40
Connections	
Cement	425 sx

Tubing Detail				
Jts	Size	Depth	Length	Detail

Rod Detail				
Rods	Size	Depth	Length	Detail

Hole Size	12-1/4"
TOC	Surface
Method	Circ 88 sx

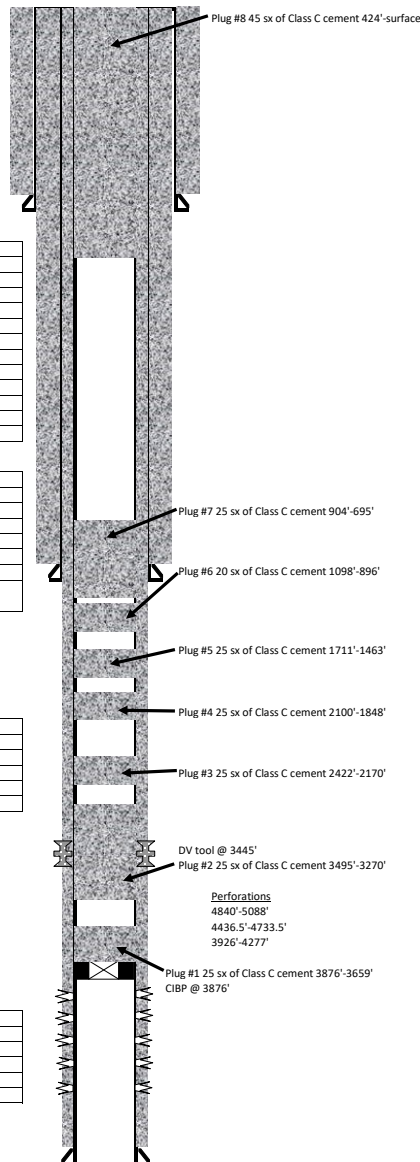
Csg Depth	800'
Size	8-5/8"
Weight	32
Grade	K55
Connections	
Cement	425 sx

Last Update	2/14/2022
By	RCB

PBTD	5718'
TD MD	5757'
TD TVD	5757'

Hole Size	7-7/8"
TOC	Surface
Method	Circ 165 sx

Csg Depth	5731'
Size	5-1/2"
Weight	17
Grade	J55
Connections	
Cement	1390 sx



District I
1625 N. French Dr., Hobbs, NM 88240
Phone:(575) 393-6161 Fax:(575) 393-0720
District II
811 S. First St., Artesia, NM 88210
Phone:(575) 748-1283 Fax:(575) 748-9720
District III
1000 Rio Brazos Rd., Aztec, NM 87410
Phone:(505) 334-6178 Fax:(505) 334-6170
District IV
1220 S. St Francis Dr., Santa Fe, NM 87505
Phone:(505) 476-3470 Fax:(505) 476-3462

State of New Mexico
Energy, Minerals and Natural Resources
Oil Conservation Division
1220 S. St Francis Dr.
Santa Fe, NM 87505

CONDITIONS

Action 113316

CONDITIONS

Operator: Spur Energy Partners LLC 9655 Katy Freeway Houston, TX 77024	OGRID: 328947
	Action Number: 113316
	Action Type: [C-103] Sub. Plugging (C-103P)

CONDITIONS

Created By	Condition	Condition Date
gcordero	None	6/7/2022