

Well Name: JICARILLA APACHE B	Well Location: T24N / R5W / SEC 29 / SWNW /	County or Parish/State: RIO ARRIBA / NM
Well Number: 18E	Type of Well: CONVENTIONAL GAS WELL	Allottee or Tribe Name: JICARILLA APACHE
Lease Number: JIC11	Unit or CA Name:	Unit or CA Number:
US Well Number: 3003929287	Well Status: Abandoned	Operator: DJR OPERATING LLC

Subsequent Report

Sundry ID: 2674400

Type of Submission: Subsequent Report

Date Sundry Submitted: 06/01/2022

Date Operation Actually Began: 05/10/2022

Type of Action: Plug and Abandonment

Time Sundry Submitted: 12:27

**Actual Procedure:** The subject well was Plugged & Abandoned on 05/10/22 per the attached End of Well Report, As Plugged Wellbore Diagram, and Marker.

SR Attachments

Actual Procedure

EOWR\_BLM\_Submittal\_20220601122727.pdf

Well Name: JICARILLA APACHE B	Well Location: T24N / R5W / SEC 29 / SWNW /	County or Parish/State: RIO ARRIBA / NM
Well Number: 18E	Type of Well: CONVENTIONAL GAS WELL	Allottee or Tribe Name: JICARILLA APACHE
Lease Number: JIC11	Unit or CA Name:	Unit or CA Number:
US Well Number: 3003929287	Well Status: Abandoned	Operator: DJR OPERATING LLC

Operator

I certify that the foregoing is true and correct. Title 18 U.S.C. Section 1001 and Title 43 U.S.C. Section 1212, make it a crime for any person knowingly and willfully to make to any department or agency of the United States any false, fictitious or fraudulent statements or representations as to any matter within its jurisdiction. Electronic submission of Sundry Notices through this system satisfies regulations requiring a

Operator Electronic Signature: SHAW-MARIE FORD	Signed on: JUN 01, 2022 12:27 PM
Name: DJR OPERATING LLC	
Title: Regulatory Specialist	
Street Address: 1 Road 3263	
City: Aztec	State: NM
Phone: (505) 632-3476	
Email address: sford@djrlc.com	

Field

Representative Name:		
Street Address:		
City:	State:	Zip:
Phone:		
Email address:		

BLM Point of Contact

BLM POC Name: KENNETH G RENNICK	BLM POC Title: Petroleum Engineer
BLM POC Phone: 5055647742	BLM POC Email Address: krennick@blm.gov
Disposition: Accepted	Disposition Date: 06/02/2022
Signature: Kenneth Rennick	

**DJR Operating, LLC**  
**P&A End of Well Report**  
**Jicarilla Apache B 18E**  
**API # 30-039-29287**  
**SW/NW, Unit E, Sec 29, T24N, R5W**  
**Rio Arriba County, NM**

Spud Date: 5-21-2005

Plug Date: 5-10-2022

3-16-2021:

MIRU rig and equipment. SITP = 820, SICP = 840, BH = 0. NDWH, NU BOP. Pull tubing.  
Release rig.

5-5-2022:

Move in and rig up rig and equipment. SITP N/A, SICP = TSTM, BH = 0. TIH with bit and string mill to 6581'. TOOH.

5-6-2022:

Dakota formation top: 6565'.

Set CR at 6606'. Load and roll hole, PT casing, good test.

P&A Plug 1 &2: Dakota perfs and Dakota formation top. Mix and pump 11 sx cement under CR into Dakota perfs. Sting out and place 12 sx above CR.

Gallup formation top: 5520'.

P&A Plug 3: Gallup formation top: Pull up to 5569', mix and pump balanced plug of 12 sx from 5569' to 5414'.

Mancos formation top: 4755'.

P&A Plug 4: Mancos formation top and DV tool: Pull up to 4819', mix and pump balanced plug of 20 sx from 4819' to 4561'.

5-9-2022:

Mesa Verde formation top: 3796'.

P&A Plug 5: Mesa Verde formation top: Pull up to 3848', mix and pump balanced plug of 12 sx from 3848' to 3694'.

Chacra formation top: 3110'.

P&A Plug 6: Chacra formation top: Pull up to 3168', mix and pump balanced plug of 12 sx from 3168' to 3015'.

Formation tops: Pictured Cliffs: 2287', Fruitland: 2099', Kirtland: 1928', Ojo Alamo: 1762'.

P&A Plug 7: Pictured Cliffs, Fruitland, Kirtland, Ojo Alamo formation tops. Pull up to 2336', mix and pump balanced plug of 55 sx from 2336' to 1643'.

Nacimiento formation top: 1118'.

P&A Plug 8: Nacimiento formation top. Pull up to 1168', mix and pump balanced plug of 12 sx from 1168' to 1014'.

P&A Plug 9: 7" Surface casing shoe to surface. TIH to 564'. Mix and place plug of 52 sx from 564' to surface. TOOH.

5-10-2022:

Cut off WH. Install P&A marker. Top off casing stubs and cellar with 42 sx.

Release rig.

All cement used: Class G cement mixed at 15.8 ppg, yield 1.15 ft<sup>3</sup>

Regulatory Representative: Jimmie Dobson, BLM and Monica Kuehling, NMOCD via phone

GPS Coordinates: Lat; 36.2870601 N, Long; 107.3889914 W

DJR Operating, LLC  
P&A Marker  
Jicarilla Apache B 18E  
API # 30-039-29287  
SW/NW, Unit E, Sec 29, T24N, R5W  
Rio Arriba County, NM





# United States Department of the Interior

BUREAU OF INDIAN AFFAIRS

Jicarilla Agency

P.O. Box 167

Dulce, New Mexico 87528

IN REPLY REFER TO:

Branch of Real Estate Services

November 15, 2019

## Memorandum

To: Robert Switzer, Environmental Protection Specialist  
Bureau of Land Management, Farmington Field Office

From: Kurt Sandoval, Realty Officer  
Bureau of Indian Affairs, Jicarilla Agency

Subject: BIA Concurrence concerning Well Pad Monument Makers

Let this serve as concurrence for the agreed upon preferred method to be used when constructing well pad monument markers on Jicarilla Apache Tribal Lands. We will eliminate the 6 ft. dry hole marker and use a permanent metal plate that will be installed at ground level, effective September 2019. The marker will contain the following information:

- Well Pad Lease Number
- Well Pad Location Name and Number
- Well Pad Legal Description, specifically Section, Township and Range
- Well Pad API Number
- Well Pad Plug Date
- Well Pad Operator Name

You may contact our office if you have any questions or concerns at (575) 759-3936. Thank you.

  
Realty Officer

cc: Jicarilla Oil and Gas Administration

12" x 18" MINIMUM

**End of Well Report**  
**DJR Operating, LLC**  
**Jicarilla Apache B 18E**  
 API # 30-039-29287  
 SW/NW, Unit E, Sec 29, T24N, R5W  
 Rio Arriba County, NM

GL 6695'  
 KB 6709'  
 Spud Date 5/21/2005

**SURF CSG**

Hole size 12.25"  
 Csg Size: 8.625"  
 Wt: 24#  
 Grade: J-55  
 ID: 8.097"  
 Depth 410'  
 Csg cap ft<sup>3</sup>: 0.3576  
 TOC: Surf

Note: Daily Drilling Report indicates surface casing set at 424' KB.

Due to split in 8-5/8" surface pipe, operator dug out around cellar. A 9-5/8" sleeve was welded in place over the split. Then a 7-7/8" hole was drilled and 7" 23# casing set at 512' and cemented to surface.

**PROD CSG**

Hole size 6.25"  
 Csg Size: 4.5"  
 Wt: 10.5#  
 Grade: J-55  
 ID: 4.052"  
 Depth 7153'  
 Csg cap ft<sup>3</sup>: 0.0895  
 Csg/Csg Ann ft<sup>3</sup>: 0.2471  
 Csg/OH cap ft<sup>3</sup>: 0.1026

TOC: Stg 1 (Circ 25 bbls cmt to surface)

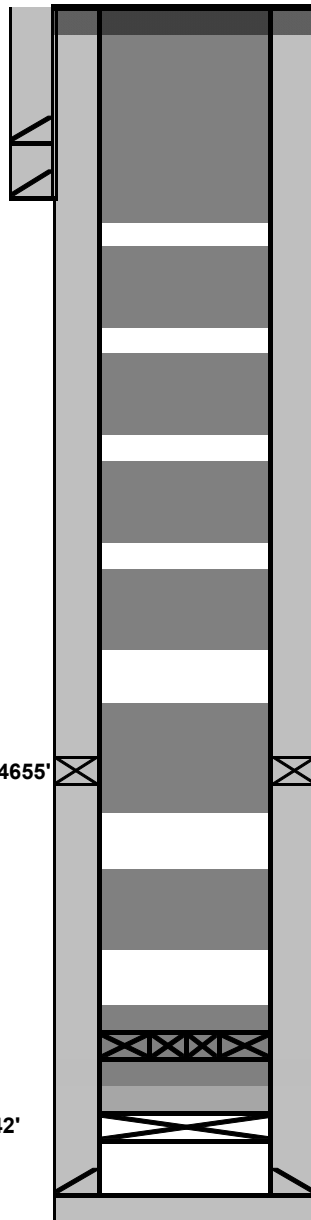
TOC: Stg 2 (Circ 74 bbls cmt to surface)

**FORMATION TOPS**

Nacimiento	1118'
Ojo Alamo	1762'
Kirtland	1928'
Fruitland	2099'
Pictured Cliffs	2287'
Lewis	2392'
Chacra	3110'
Mesa Verde	3796'
Mancos	4755'
Gallup	5520'
Dakota	6565'

DV Tool at 4655'

Dakota Perfs 6702-26'  
 PBTD 6918'  
 Previously set CIBP 6942'  
 Abandoned Perfs 6980-98'  
 TD 7161'



5-10-2022: Cut off WH, Install P&A marker, top off casings and cellar with 42 sx.

5-9-2022: Plug 9: Surface casing shoe to surface: Mix and spot balanced plug of 52 sx from 564' to surface.

5-9-2022: Plug 8: Nacimiento: Spot balanced plug of 12 sx from 1168' to 1014'.

5-9-2022: Plug 7: Pictured Cliffs, Fruitland, Kirtland and Ojo Alamo: Spot balanced plug of 55 sx from 2336' to 1643'.

5-9-2022: Plug 6: Chacra: Spot balanced plug of 12 sx from 3168' to 3015'.

5-9-022: Plug 5: Mesaverde: Spot balanced plug of 12 sx from 3848' to 3694'.

5-6-2022: Plug 4: DV tool-Mancos: Spot balanced plug of 20 sx from 4819' to 4561'.

5-6-2022: Plug 3: Gallup: Spot balanced plug of 12 sx from 5569' to 5414'.

5-6-2022: Plugs 1&2: Dakota top and perfs: Mix and pump 11 sx through CR to 6726' , spot 12 sx above CR to 6451'.

5-6-2022: Set CR at 6606'. Load and Roll hole. PT casing, good test.

All cement used was Class G mixed at 15.8 ppq. yield 1.15 ft<sup>3</sup>  
 Regulatory Representative: Jimmie Dobson, BLM and Monica Kuehling, NMOCD via phone  
 GPS Coordinates: Lat; 36.2870601N, Long; 107.3889914W

**District I**  
1625 N. French Dr., Hobbs, NM 88240  
Phone:(575) 393-6161 Fax:(575) 393-0720  
**District II**  
811 S. First St., Artesia, NM 88210  
Phone:(575) 748-1283 Fax:(575) 748-9720  
**District III**  
1000 Rio Brazos Rd., Aztec, NM 87410  
Phone:(505) 334-6178 Fax:(505) 334-6170  
**District IV**  
1220 S. St Francis Dr., Santa Fe, NM 87505  
Phone:(505) 476-3470 Fax:(505) 476-3462

State of New Mexico  
Energy, Minerals and Natural Resources  
Oil Conservation Division  
1220 S. St Francis Dr.  
Santa Fe, NM 87505

CONDITIONS

Action 113036

CONDITIONS

Operator: DJR OPERATING, LLC 1 Road 3263 Aztec, NM 87410	OGRID: 371838
	Action Number: 113036
	Action Type: [C-103] Sub. Plugging (C-103P)

CONDITIONS

Created By	Condition	Condition Date
mkuehling	None	6/23/2022