

Submit Copy To Appropriate District
Office
District I – (575) 393-6161
1625 N. French Dr., Hobbs, NM 88240
District II – (575) 748-1283
811 S. First St., Artesia, NM 88210
District III – (505) 334-6178
1000 Rio Brazos Rd., Aztec, NM 87410
District IV – (505) 476-3460
1220 S. St. Francis Dr., Santa Fe, NM
87505

State of New Mexico
Energy, Minerals and Natural Resources

Form C-103
Revised July 18, 2013

OIL CONSERVATION DIVISION
1220 South St. Francis Dr.
Santa Fe, NM 87505

WELL API NO.	30-015-34496
5. Indicate Type of Lease STATE <input checked="" type="checkbox"/> FEE <input type="checkbox"/>	
6. State Oil & Gas Lease No.	
7. Lease Name or Unit Agreement Name MESQUITE STATE	
8. Well Number	15
9. OGRID Number	328947
10. Pool name or Wildcat EMPIRE; GLORIETA-YESO, EAST	

SUNDRY NOTICES AND REPORTS ON WELLS
(DO NOT USE THIS FORM FOR PROPOSALS TO DRILL OR TO DEEPEN OR PLUG BACK TO A DIFFERENT RESERVOIR. USE "APPLICATION FOR PERMIT" (FORM C-101) FOR SUCH PROPOSALS.)

1. Type of Well: Oil Well ☐ Gas Well ☒ Other INJECTION

2. Name of Operator
SPUR ENERGY PARTNERS LLC

3. Address of Operator
9655 KATY FREEWAY, SUITE 500, HOUSTON, TX 77024

4. Well Location
Unit Letter L: 1750 feet from the SOUTH line and 990 feet from the WEST line
Section 20 Township 17S Range 29E NMPM EDDY County

11. Elevation (Show whether DR, RKB, RT, GR, etc.)
3637' GR

12. Check Appropriate Box to Indicate Nature of Notice, Report or Other Data

NOTICE OF INTENTION TO:		SUBSEQUENT REPORT OF:	
PERFORM REMEDIAL WORK <input type="checkbox"/>	PLUG AND ABANDON <input type="checkbox"/>	REMEDIAL WORK <input type="checkbox"/>	ALTERING CASING <input type="checkbox"/>
TEMPORARILY ABANDON <input type="checkbox"/>	CHANGE PLANS <input type="checkbox"/>	COMMENCE DRILLING OPNS. <input type="checkbox"/>	P AND A <input checked="" type="checkbox"/>
PULL OR ALTER CASING <input type="checkbox"/>	MULTIPLE COMPL <input type="checkbox"/>	CASING/CEMENT JOB <input type="checkbox"/>	
DOWNHOLE COMMINGLE <input type="checkbox"/>			
CLOSED-LOOP SYSTEM <input type="checkbox"/>			
OTHER: <input type="checkbox"/>		OTHER: <input type="checkbox"/>	

13. Describe proposed or completed operations. (Clearly state all pertinent details, and give pertinent dates, including estimated date of starting any proposed work). SEE RULE 19.15.7.14 NMAC. For Multiple Completions: Attach wellbore diagram of proposed completion or recompletion.

Please find the post job procedure and WBDs attached for your use.
Thank you!

Approved for plugging of well bore only. Liability under bond is retained pending Location cleanup & receipt of C-103Q (Subsequent Report of Well Plugging) which may be found at OCD Web Page, OCD Permitting @ www.emnrd.state.nm.us

Spud Date:

Rig Release Date:

I hereby certify that the information above is true and complete to the best of my knowledge and belief.

SIGNATURE Sarah Chapman TITLE REGULATORY DIRECTOR DATE 06/21/2022

Type or print name SARAH CHAPMAN E-mail address: SCHAPMAN@SPURENERGY.COM PHONE: 832-930-8613

For State Use Only

APPROVED BY: [Signature] TITLE Staff Manager DATE 6/29/2022
Conditions of Approval (if any):

Start Date	End Date	Summary
6/3/2022	6/3/2022	Move equipment in, PJSM, RU equipment, ND WH, NU flange and BOP, RU floor, unset packers and POOH w/ 134 jts of 2-7/8" tubing and two packers, Secure well and SDFN.
6/6/2022	6/6/2022	Drove to location, PJSM, RU WL, RIH and set CIBP @ 3823', POOH RD WL, RIH w/ 119 jts, RU pump and circ well with 89 bbl of FW, POOH, RU JSI WL and run CBL from 3823' - surface, RD JSI, RIH w/ 119 jts, RU pump and circulate the well w/ 89 bbl of 10# brine, mix and pump plug #1 25 sx of class C cement from 3823'-3571', displace w/ 20.6 bbls, pull 20 stands to derrick, secure well and SDFN.
6/7/2022	6/7/2022	Drove to location, PJSM, RIH and tag plug #1 @ 3567', POOH LD 20 jts, RU hose, mix and pump plug #2 25 sx of class C cement from 3156', displace w/ 16.8 bbl, pull 20 stands, WOC, RIH and tag plug #2 @ 2927', POOH LD 25 jts, mix and pump plug #3 25 sx of class C cement from 2368'-2116', displace w/ 12.2 bbl, POOH LD 9 jts, mix and pump plug #4 25 sx of class C cement from 2080'-1828', displace w/ 10.5 bbl, POOH LD 12 jts, mix and pump plug #5 25 sx of class C cement from 1696'-1440', displace w/ 8.3 bbl, Pull all pipe to the derrick, secure well and SDFN.
6/8/2022	6/8/2022	Drove to location, PJSM, RIH and tag plug #5 @ 1440', POOH LD 18 jts, mix and pump plug #6 25 sx of class C cement from 1120'-868', displace w/ 5 bbls, POOH LD 7 jts, RU WL, RIH and perf @ 855', POOH RD WL, RIH w/ packer and set at 200', check injection rate, pressure up to 500 psi and hold for 5 min, notify OCD, OCD ok'd to spot 30 sx, RIH to 928', mix and pump plug #7 30 sx of class C cement from 928'-625', displace w/ 3.6 bbl, WOC, secure well and SDFN due to high winds.
6/9/2022	6/9/2022	Drove to location, PJSM, RIH and tag plug #7 @ 704', pull 7 stands, LD rest of the pipe, RU WL, RIH and perf @ 402', POOH RD WL, RIH w/ packer and set @ 60', check injection rate, pressure up to 500 psi and bled down to 200 psi and held, notified OCD, David Alvarado approved to drop to 452' and spot 20 sx, mix and pump plug #8 20 sx of class C cement from 452'-250', displace w/ 1.5 bbl, WOC, RIH and couldn't tell if cement was there, Notified OCD, David Alvarado said to wait until morning and try to tag again, secure well and SDFN.
6/10/2022	6/10/2022	Drove to location, PJSM, RIH tag plug #8 @ 266', POOH LD 8 jts, RU WL, RIH and perf @ 200', POOH RD WL, RIH and set packer, check injection rate, pressure up to 500 psi and held for 30 min, notify David Alvarado w/ OCD and he approved to drop 50' below perfs and spot cement to surface, POOH w/ packer, RIH open ended to 250', mix and pump plug #9 27 sx of class C cement, cement came to surface, RD floor, ND BOP, RD equipment and move to the next well.

API #	30-015-34496	Mesquite State #15	County, ST	Eddy County, NM
Operator	Spur Energy Partners		Sec-Twin-Ring	20-17S-29E
Field	Empire; Glorieta-Yeso, East		Footage	1750 FSL 990 FWL
Spud Date	3/12/2006		Survey	32.817646,-104.1023865

Formation (MD)	
Yates	790
7 Rivers	1060
Queen	1642
Grayburg	2020
San Andres	2300
Glorieta	3778

RKB	3653
GL	3637

Hole Size	17-1/2"
TOC	Surface
Method	Circ 100 sx

Csg Depth	352'
Size	13-3/8"
Weight	48
Grade	H40
Connections	
Cement	425 sx

Tubing Detail				
Jts	Size	Depth	Length	Detail

Rod Detail				
Rods	Size	Depth	Length	Detail

Hole Size	12-1/4"
TOC	Surface
Method	Circ 137 sx

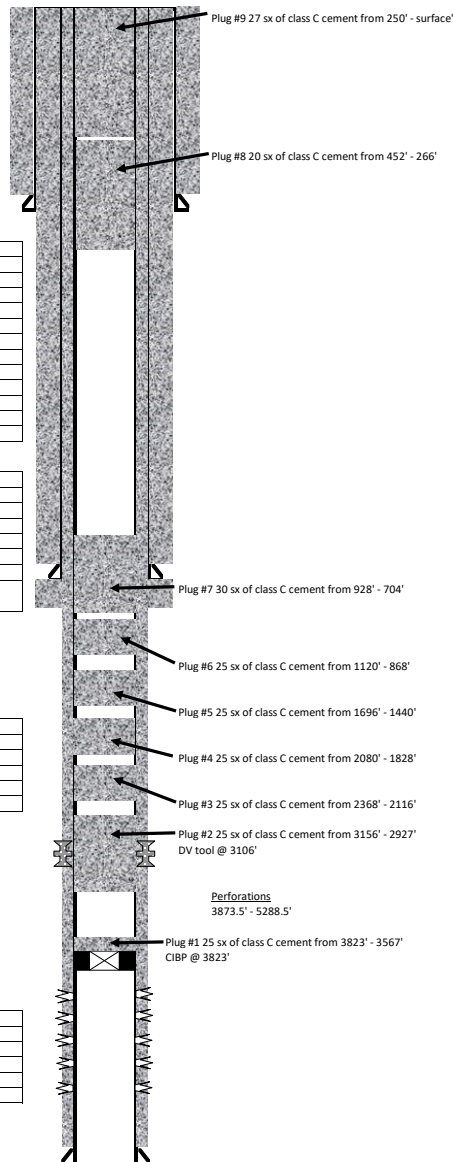
Csg Depth	805'
Size	8-5/8"
Weight	24
Grade	J55
Connections	
Cement	600 sx

Last Update	2/13/2022
By	RCB

PBTD	5396'
TD MD	5415'
TD TVD	5415'

Hole Size	7-7/8"
TOC	Surface
Method	Circ 207 sx

Csg Depth	5410'
Size	5-1/2"
Weight	17
Grade	J55
Connections	
Cement	1255 sx



District I
1625 N. French Dr., Hobbs, NM 88240
Phone:(575) 393-6161 Fax:(575) 393-0720
District II
811 S. First St., Artesia, NM 88210
Phone:(575) 748-1283 Fax:(575) 748-9720
District III
1000 Rio Brazos Rd., Aztec, NM 87410
Phone:(505) 334-6178 Fax:(505) 334-6170
District IV
1220 S. St Francis Dr., Santa Fe, NM 87505
Phone:(505) 476-3470 Fax:(505) 476-3462

State of New Mexico
Energy, Minerals and Natural Resources
Oil Conservation Division
1220 S. St Francis Dr.
Santa Fe, NM 87505

CONDITIONS

Action 119248

CONDITIONS

Operator: Spur Energy Partners LLC 9655 Katy Freeway Houston, TX 77024	OGRID: 328947
	Action Number: 119248
	Action Type: [C-103] Sub. Plugging (C-103P)

CONDITIONS

Created By	Condition	Condition Date
gcordero	None	6/29/2022