

Well Name: MARSHA BINGHAM

Well Location: T26N / R3W / SEC 27 /
NENE /

County or Parish/State: RIO
ARRIBA / NM

Well Number: 1

Type of Well: OIL WELL

Allottee or Tribe Name:
JICARILLA APACHE

Lease Number: JIC117

Unit or CA Name:

Unit or CA Number:

US Well Number: 3003924052

Well Status: Producing Gas Well

Operator: DJR OPERATING LLC

Notice of Intent

Sundry ID: 2689350

Type of Submission: Notice of Intent

Type of Action: Plug and Abandonment

Date Sundry Submitted: 08/26/2022

Time Sundry Submitted: 11:11

Date proposed operation will begin: 08/26/2022

Procedure Description: This request is being submitted for engineering & geological review prior to onsite inspection as approved by Dave M. of the BLM. DJR Operating, LLC requests permission to Plug & Abandon the subject well according to the attached Procedure, Current & Proposed Wellbore Diagram.

Surface Disturbance

Is any additional surface disturbance proposed?: No

NOI Attachments

Procedure Description

NOI_PA_BLM_Submittal_20220826111118.pdf

Received by OCD: 8/29/2022 12:16:05 PM

Page 2 of 11

Well Name: MARSHA BINGHAM	Well Location: T26N / R3W / SEC 27 / NENE /	County or Parish/State: RIO ARRIBA / NM
Well Number: 1	Type of Well: OIL WELL	Allottee or Tribe Name: JICARILLA APACHE
Lease Number: JIC117	Unit or CA Name:	Unit or CA Number:
US Well Number: 3003924052	Well Status: Producing Gas Well	Operator: DJR OPERATING LLC

Conditions of Approval

Specialist Review

General_Requirement_PxA_20220829104654.pdf
26N3W27_Marsha_Bingham_1_KGR_20220829104641.pdf
2689350_NOIA_1_3003924052_KGR_08292022_20220829104630.pdf

Operator

I certify that the foregoing is true and correct. Title 18 U.S.C. Section 1001 and Title 43 U.S.C. Section 1212, make it a crime for any person knowingly and willfully to make to any department or agency of the United States any false, fictitious or fraudulent statements or representations as to any matter within its jurisdiction. Electronic submission of Sundry Notices through this system satisfies regulations requiring a

Operator Electronic Signature: SHAW-MARIE FORD

Name: DJR OPERATING LLC

Title: Regulatory Specialist

Street Address: 1 Road 3263

City: Aztec

State: NM

Phone: (505) 632-3476

Email address: sford@djrlc.com

Signed on: AUG 26, 2022 11:11 AM

Field

Representative Name:

Street Address:

City: State: Zip:

Phone:

Email address:

BLM Point of Contact

BLM POC Name: KENNETH G RENNICK

BLM POC Phone: 5055647742

Disposition: Approved

Signature: Kenneth Rennick

BLM POC Title: Petroleum Engineer

BLM POC Email Address: krennick@blm.gov

Disposition Date: 08/29/2022

Plug and Abandonment Procedure
for
DJR Operating, LLC
Marsha Bingham 1
API # 30-039-24052
NE/NE, Unit A, Sec. 27, T26N, R3W
Rio Arriba County, NM

1. Hold Pre job meeting, comply with all NMOCD, BLM and environmental regulations.
2. MIRU prep rig.
3. Check and record tubing, casing and bradenhead pressures.
4. Remove existing piping from casing valve, RU blow lines from casing valves and blow down casing pressure. Kill well as necessary. Ensure that well is dead or on a vacuum.
5. MIRU hot oil unit, pump hot water to clear tubing of paraffin.
6. Unset TAC.
7. ND WH, NU BOP, function test BOP.
8. Trip out of hole with rods and tubing. LD rods and tubing to be sent in for storage/salvage.
9. RU pit, pump, and power swivel. PU 2-3/8" workstring, bit (or 4 blade mill) and 4x3-1/8" drill collars. Drill out Baker Model N CIBP at 7796' and clean out to near 8200'. TOOH. RU Cement Equipment.
10. Plug 1 (Dakota) PU and TIH with 5-1/2" CR and set near 8190'. Pressure test tubing to 1000 psi. Attempt to squeeze 25 sx below CR. Sting out and spot 50' plug on top of CR. TOOH.
11. Plug 2 (Gallup and Mancos perms): PU and TIH with 5-1/2" CR and set near 7070'. Sting out of CR and pressure test casing to 600 psi. Sting back into retainer and attempt to squeeze below CR with 40 sx. Sting out and pump water to ensure tubing is clear. TOOH.

12. MIRU logging truck. Run CBL from top of CR to surface. Electronic copy of CBL to be sent to Ken Rennick krennick@blm.gov, Monica Kueling monica.kueling@state.nm.us, Loren Diede ldiede@djrlc.com, and slindsay@djrlc.com. Plugs may be adjusted per log results.
13. Plug 3 (Mancos top): Spot balanced plug from 6418-6318'. Pump water to ensure tubing is clear.
14. Plug 4 (Mesa Verde): Spot balanced plug from 5750-5650'. Pump water to ensure tubing is clear.
15. Plug 5 (Chacra): Spot balanced plug from 4620-4520'. Pump water to ensure tubing is clear.
16. Plug 6 (Pictured Cliffs, Fruitland, Kirtland, and Ojo Alamo): Spot balanced plug from 3994-3558'. Pump water to ensure tubing is clear.
17. Plug 7 (Nacimiento): Spot balanced plug from 1927-1827'. Pump water to ensure tubing is clear. TOO H.
18. Plug 8 (Surface casing shoe and surface plug): PU and TIH with CIBP and set near 390'. RIH and perf casing-casing annulus near TOC from CBL in Step 12. POOH. TIH with workstring to top of CIBP. Establish rate. Mix and pump sufficient volume to fill casing. TOO H. Tie onto casing and mix and pump sufficient volume to bring cement to surface, inside and outside.
19. RD cementing equipment. Cut off wellhead, fill annuli with cement, as necessary. **Install P&A marker as per BIA requirements.** Record GPS coordinates for P&A marker and the final P&A report. Photograph the P&A marker and attach to the report.
20. RD and MO all rig and cement equipment. Ensure that location is free of trash and contamination before moving off.
21. Send all reports and attachments to DJR Aztec office for regulatory filings.

Note: All cement is to be Class G mixed at 15.8 ppg yield 1.15 ft³/sk. Cement volumes are to include inside capacities +50' and outside capacities + 100% excess.

PxA marker is to be 12"x18" with rounded corners and installed below grade no deeper than 2'.

Current Wellbore Diagram
DJR Operating, LLC
Marsha Bingham 1

API # 30-039-24052
 NE/NE, Unit A, Sec 27, T26N, R3W
 Rio Arriba County, NM

GL 7404'
 KB 7416'
 Spud Date 6/27/1987

SURF CSG

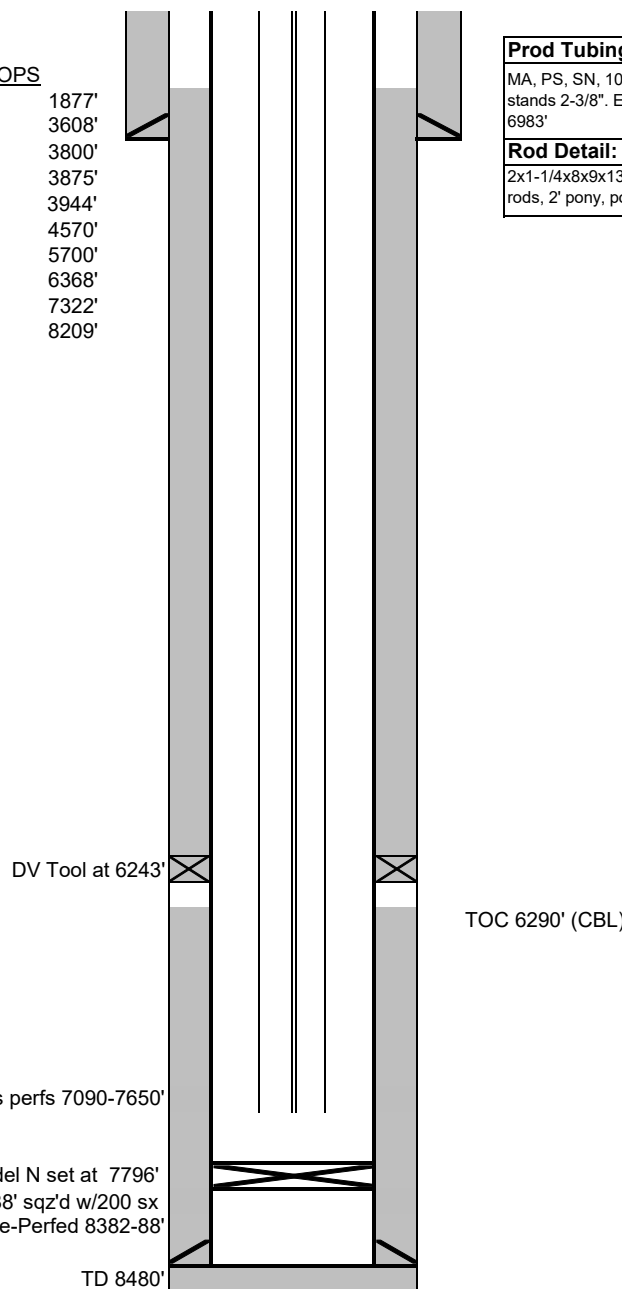
Hole size 12.25"
 Csg Size: 9.625"
 Wt: 36#
 Grade: J-55
 ID: 8.921
 Depth 336'
 Csg cap ft³: 0.434
 TOC: Surface

FORMATION TOPS

Nacimiento	1877'
Ojo Alamo	3608'
Kirtland	3800'
Fruitland	3875'
Pictured Cliffs	3944'
Chacra	4570'
Mesa Verde	5700'
Mancos	6368'
Gallup	7322'
Dakota	8209'

PROD CSG

Hole size 8.75"
 Csg Size: 5.5"
 Wt: 17#
 Grade: K-55
 ID: 4.892"
 Depth 8468'
 Csq cap ft³: 0.1305
 TOC Stg 1: 6290' (CBL)
 TOC Stg 2: 250' (TS-operator reported)

**Prod Tubing Detail:**

MA, PS, SN, 10 stands 2-3/8", TAC, 108
 stands 2-3/8". EOT 7656'. SN 7619'. TAC
 6983'

Rod Detail:

2x1-1/4x8x9x13 pump, 199x3/4" rods, 101x7/8"
 rods, 2' pony, polished rod.

Proposed Wellbore Diagram
DJR Operating, LLC
Marsha Bingham 1

API # 30-039-24052
 NE/NE, Unit A, Sec 27, T26N, R3W
 Rio Arriba County, NM

GL 7404'
 KB 7416'
 Spud Date 6/27/1987

SURF CSG

Hole size 12.25"
 Csg Size: 9.625"
 Wt: 36#
 Grade: J-55
 ID: 8.921
 Depth 336'
 Csg cap ft3: 0.434
 TOC: Surface

FORMATION TOPS

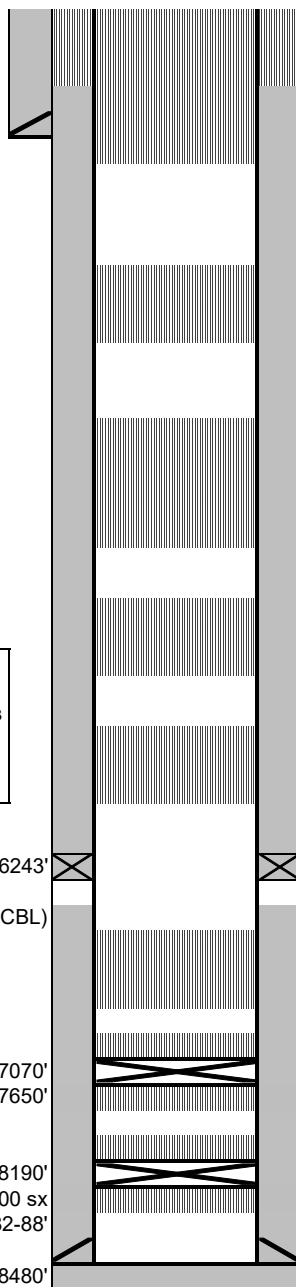
Nacimiento	1877'
Ojo Alamo	3608'
Kirtland	3800'
Fruitland	3875'
Pictured Cliffs	3944'
Chacra	4570'
Mesa Verde	5700'
Mancos	6368'
Gallup	7322'
Dakota	8209'

PROD CSG

Hole size 8.75"
 Csg Size: 5.5"
 Wt: 17#
 Grade: K-55
 ID: 4.892"
 Depth 8468'
 Csg cap ft3: 0.1305
 TOC Stg 1: 6290' (CBL)
 TOC Stg 2: 250' (TS-operator reported)

All cement is to be Class G mixed at 15.8 ppg yield and 1.15 ft3/sk. Cement volumes are to include inside capacities +50' and outside capacities + 100% excess.

DV Tool at 6243'
 TOC 6290' (CBL)
 Set CR near 7070'
 Mancos perms 7090-7650'
 Set CR near 8190'
 Perfs 8282-8388' sqz'd w/200 sx
 Re-Perfed 8382-88'
 TD 8480'



Plug 8 (Surface casing shoe and surface plug): Set CIBP near 390'. Perf casing near TOC as indicated by CBL in casing-casing annulus. Mix and pump sufficient volume to fill casing. Tie onto 5-1/2" casing. Mix and pump sufficient volume to bring TOC to surface, inside and outside.

Plug 7 (Nacimiento): Spot balanced plug from 1927-1827'.

Plug 6 (Pictured Cliffs, Fruitland, Kirtland, and Ojo Alamo): Spot balanced plug from 3994-3558'.

Plug 5 (Chacra): Spot balanced plug from 4620-4520'

Plug 4 (Mesa Verde): Spot balanced plug from 5750-5650'

Plug 3 (Mancos): Spot balanced plug from 6418-6318'.

Plug 2 (Gallup): Set CR near 7070'. Attempt to squeeze 40 sx below CR. Run CBL to surface. Spot 50' plug above CR.

Plug 1 (Dakota): Set CR near 8190'. Attempt to squeeze below CR with 25 sx. Spot 50' plug above CR of CR.

**GENERAL REQUIREMENTS FOR
PERMANENT ABANDONMENT OF WELLS ON FEDERAL AND INDIAN LEASES
FARMINGTON FIELD OFFICE**

1.0 The approved plugging plans may contain variances from the following minimum general requirements.

1.1 Modification of the approved plugging procedure is allowed only with the prior approval of the Authorized Officer, Farmington Field Office.

1.2 Requirements may be added to address specific well conditions.

2.0 Materials used must be accurately measured. (densometer/scales)

3.0 A tank or lined pit must be used for containment of any fluids from the wellbore during plugging operations and all pits are to be fenced with woven wire. These pits will be fenced on three sides and once the rig leaves location, the fourth side will be fenced.

3.1 Pits are not to be used for disposal of any hydrocarbons. If hydrocarbons are present in the pit, the fluids must be removed prior to filling in.

4.0 All cement plugs are to be placed through a work string. Cement may be bull-headed down the casing with prior approval. Cement caps on top of bridge plugs or cement retainers may be placed by dump bailer.

4.1 The cement shall be as specified in the approved plugging plan.

4.2 All cement plugs placed inside casing shall have sufficient volume to fill a minimum of 100' of the casing, or annular void(s) between casings, plus an excess volume sufficient to provide for 50 linear feet of fill above the plug.

4.3 Surface plugs may be no less than 50' in length.

4.4 All cement plugs placed to fill annular void(s) between casing and the formation shall be of sufficient volume to fill a minimum of 100' of the annular space plus 100% excess, calculated using the bit size, or 100' of annular capacity, determined from a caliper log, plus an excess volume sufficient to provide for 50 linear feet of fill above the plug.

4.5 All cement plugs placed to fill an open hole shall be of sufficient volume to fill a minimum of 100' of hole, as calculated from a caliper log, plus an excess volume sufficient to provide for 50 linear feet of fill above the plug. In the absence of a caliper log, an excess of 100% shall be required.

4.6 A cement bond log or other accepted cement evaluation tool is required to be run if one had not been previously ran or cement did not circulate to surface during the original casing cementing job or subsequent cementing jobs.

5.0 All cement plugs spotted across, or above, any exposed zone(s), when; the wellbore is not full of fluid or the fluid level will not remain static, and in the case of lost circulation or partial returns during cement placement, shall be tested by tagging with the work string.

- 5.1 The top of any cement plug verified by tagging must be at or above the depth specified in the approved plan, without regard to any excess.
- 5.2 Testing will not be required for any cement plug that is mechanically contained by use of a bridge plug and/or cement retainer, if casing integrity has been established.
- 5.3 Any cement plug which is the only isolating medium, for a fresh water interval or a zone containing a prospectively valuable deposit of minerals, shall be tested by tagging.
- 5.4 If perforations are required below the surface casing shoe, a 30 minute minimum wait time will be required to determine if gas and/or water flows are present. If flow is present, the well will be shut-in for a minimum of one hour and the pressure recorded. Short or long term venting may be necessary to evacuate trapped gas. **If only a water flow occurs with no associated gas, shut well in and record the pressures. Contact the Engineer as it may be necessary to change the cement weight and additives.**

6.0 Before setting any cement plugs the hole needs to be rolled. All wells are to be controlled by means of a fluid that is to be of a weight and consistency necessary to stabilize the wellbore. This fluid shall be left in place as filler between all plugs.

- 6.1 Drilling mud may be used as the wellbore fluid in open hole plugging operations.
- 6.2 The wellbore fluid used in cased holes shall be of sufficient weight to balance known pore pressures in all exposed formations.

7.0 A blowout preventer and related equipment (BOPE) shall be installed and tested prior to working in a wellbore with any exposed zone(s); (1) that are over pressured, (2) where the pressures are unknown, or (3) known to contain H₂S.

8.0 Within 30 days after plugging work is completed, file a Sundry Notice, Subsequent Report of Abandonment (Form 3160-5), five copies, with the Field Manager, Bureau of Land Management, 6251 College Blvd., Suite A, Farmington, NM 87402. The report should show the manner in which the plugging work was carried out, the extent, by depth(s), of cement plugs placed, and the size and location, by depth(s), of casing left in the well. Show date well was plugged.

9.0 All permanently abandoned wells are to be marked with a permanent monument as specified in 43 CFR 3162.6(d). Unless otherwise approved.

10.0 If this well is located in a Specially Designated Area (SDA), compliance with the appropriate seasonal closure requirements will be necessary.

All of the above are minimum requirements. Failure to comply with the above conditions of approval may result in an assessment for noncompliance and/or a Shut-in Order being issued pursuant to 43 CFR 3163.1. You are further advised that any instructions, orders or decisions issued by the Bureau of Land Management are subject to administrative review pursuant to 43 CFR 3165.3 and appeal pursuant to 43 CFR 3165.4 and 43 CFR 4.700.

(October 2012 Revision)

**UNITED STATES DEPARTMENT OF THE INTERIOR
BUREAU OF LAND MANAGEMENT
FARMINGTON DISTRICT OFFICE
6251 COLLEGE BLVD.
FARMINGTON, NEW MEXICO 87402**

AFMSS 2 Sundry ID 2689350

Attachment to notice of Intention to Abandon

Well: Marsha Bingham 1

CONDITIONS OF APPROVAL

1. Plugging operations authorized are subject to the attached "General Requirements for Permanent Abandonment of Wells on Federal and Indian Lease."
2. Farmington Office is to be notified at least 24 hours before the plugging operations commence at (505) 564-7750.

You are also required to place cement excesses per 4.2 and 4.4 of the attached General Requirements.

Office Hours: 7:45 a.m. to 4:30 p.m.

K. Rennick 8/29/2022

BLM FLUID MINERALS P&A Geologic Report

Date Completed: 08/29/2022

Well No. Marsha Bingham 1 (API# 30-039-24052)		Location	NENE				
Lease No. JIC117		Sec. 27	T26N			R3W	
Operator DJR Operating, LLC		County	Rio Arriba		State	New Mexico	
Total Depth 8480'	PBTD NA	Formation Mancos & Dakota					
Elevation (GL) 7404'		Elevation (KB) 7416'					

Geologic Formations	Est. Top	Est. Bottom	Log Top	Log Bottom	Remarks
San Jose Fm					Surface/freshwater sands
Nacimiento Fm			1877		Possible freshwater sands
Ojo Alamo Ss			3608		Aquifer (possible freshwater)
Kirtland Shale			3800		
Fruitland Fm			3875		Coal/Gas/Possible water
Pictured Cliffs Ss			3944		Gas
Lewis Shale					
Chacra			4570		Gas
Cliff House Ss			5700		Water/Possible gas
Menefee Fm					Coal/Ss/Water/Possible O&G
Point Lookout Ss					Probable water/Possible O&G
Mancos Shale			6368		
Gallup			7322		O&G/Water
Greenhorn					
Graneros Shale					
Dakota Ss			8209		O&G/Water

Remarks:

P & A

Reference Well:

- Mancos perforations 7090 - 7650'. Dakota perforations 8282 – 8388'.

Prepared by: Kenneth Rennick

District I
1625 N. French Dr., Hobbs, NM 88240
Phone:(575) 393-6161 Fax:(575) 393-0720
District II
811 S. First St., Artesia, NM 88210
Phone:(575) 748-1283 Fax:(575) 748-9720
District III
1000 Rio Brazos Rd., Aztec, NM 87410
Phone:(505) 334-6178 Fax:(505) 334-6170
District IV
1220 S. St Francis Dr., Santa Fe, NM 87505
Phone:(505) 476-3470 Fax:(505) 476-3462

State of New Mexico
Energy, Minerals and Natural Resources
Oil Conservation Division
1220 S. St Francis Dr.
Santa Fe, NM 87505

CONDITIONS

Action 138888

CONDITIONS

Operator: DJR OPERATING, LLC 1 Road 3263 Aztec, NM 87410	OGRID: 371838
	Action Number: 138888
	Action Type: [C-103] NOI Plug & Abandon (C-103F)

CONDITIONS

Created By	Condition	Condition Date
kpickford	Notify NMOCD 24 Hours Prior to beginning operations	8/30/2022
kpickford	Adhere to BLM approved COAs and plugs. See GEO report.	8/30/2022