

**District I**  
1625 N. French Dr., Hobbs, NM 88240  
Phone: (575) 393-6161 Fax: (575) 393-0720

**District II**  
811 S. First St., Artesia, NM 88210  
Phone: (575) 748-1283 Fax: (575) 748-9720

**District III**  
1000 Rio Brazos Road, Aztec, NM 87410  
Phone: (505) 334-6178 Fax: (505) 334-6170

**District IV**  
1220 S. St. Francis Dr., Santa Fe, NM 87505  
Phone: (505) 476-3460 Fax: (505) 476-3462

**State of New Mexico**  
**Energy Minerals and Natural Resources**  
**Oil Conservation Division**  
**1220 South St. Francis Dr.**  
**Santa Fe, NM 87505**

Form C-101  
Revised July 18, 2013

AMENDED REPORT

**APPLICATION FOR PERMIT TO DRILL, RE-ENTER, DEEPEN, PLUGBACK, OR ADD A ZONE**

<sup>1</sup> Operator Name and Address Armstrong Energy Corporation, PO Box 1973, Roswell, NM 88202		<sup>2</sup> OGRID Number 1092	
		<sup>3</sup> API Number 30-005-63887	
<sup>4</sup> Property Code Volleyball State	<sup>5</sup> Property Name		<sup>6</sup> Well No. 001

**7. Surface Location**

UL - Lot P	Section 2	Township 12S	Range 26E	Lot Idn	Feet from 660	N/S Line South	Feet From 660	E/W Line East	County Chaves
---------------	--------------	-----------------	--------------	---------	------------------	-------------------	------------------	------------------	------------------

**8. Proposed Bottom Hole Location**

UL - Lot	Section	Township	Range	Lot Idn	Feet from	N/S Line	Feet From	E/W Line	County
----------	---------	----------	-------	---------	-----------	----------	-----------	----------	--------

**9. Pool Information**

Sand Draw; Abo	Pool Name	Pool Code 97418
----------------	-----------	--------------------

**Additional Well Information**

<sup>11</sup> Work Type P	<sup>12</sup> Well Type G	<sup>13</sup> Cable/Rotary R	<sup>14</sup> Lease Type State	<sup>15</sup> Ground Level Elevation 3675
<sup>16</sup> Multiple N	<sup>17</sup> Proposed Depth 4915	<sup>18</sup> Formation Abo	<sup>19</sup> Contractor	<sup>20</sup> Spud Date
Depth to Ground water		Distance from nearest fresh water well		Distance to nearest surface water

We will be using a closed-loop system in lieu of lined pits

**21. Proposed Casing and Cement Program**

Type	Hole Size	Casing Size	Casing Weight/ft	Setting Depth	Sacks of Cement	Estimated TOC
Surf	17.5	13.375	48	40	25	0
Surf	12.25	8.625	24	1075	390 + 200 sx	0
Prod	7.875	5.5	17	5,450	500 sx + 300 sx	330

**Casing/Cement Program: Additional Comments**

--

**22. Proposed Blowout Prevention Program**

Type	Working Pressure	Test Pressure	Manufacturer
DoubleRam	5000		

<sup>23</sup> I hereby certify that the information given above is true and complete to the best of my knowledge and belief. <b>I further certify that I have complied with 19.15.14.9 (A) NMAC <input type="checkbox"/> and/or 19.15.14.9 (B) NMAC <input type="checkbox"/> , if applicable.</b> Signature: <i>Jeffery Tew</i> Printed name: Jeffery Tew Title: Operations Engineer E-mail Address: jtew@aecnm.com Date: 2/23/22 Phone: 575-625-2222	<b>OIL CONSERVATION DIVISION</b>	
	Approved By:	
	Title:	
	Approved Date:	Expiration Date:
	Conditions of Approval Attached	

District I  
1625 N. French Dr., Hobbs, NM 88240  
District II  
1301 W. Grand Avenue, Artesia, NM 88210  
District III  
1000 Rio Brazos Rd., Aztec, NM 87410  
District IV  
1220 S. St. Francis Dr., Santa Fe, NM 87505

State of New Mexico  
Energy, Minerals & Natural Resources Department  
**OIL CONSERVATION DIVISION**  
1220 South St. Francis Dr.  
Santa Fe, NM 87505

Released by Imaging: 9/8/2022 7:23:07 AM  
Revised October 12, 2005  
Submit to Appropriate District Office  
State Lease - 4 Copies  
Fee Lease - 3 Copies

AMENDED REPORT

**WELL LOCATION AND ACREAGE DEDICATION PLAT**

<sup>1</sup> API Number		<sup>2</sup> Pool Code		<sup>3</sup> Pool Name Coyote, Wolfcamp	
<sup>4</sup> Property Code		<sup>5</sup> Property Name Volleyball State			<sup>6</sup> Well Number 1
<sup>7</sup> OGRID No. 1092		<sup>8</sup> Operator Name Armstrong Energy Corporation			<sup>9</sup> Elevation 3675

<sup>10</sup> Surface Location

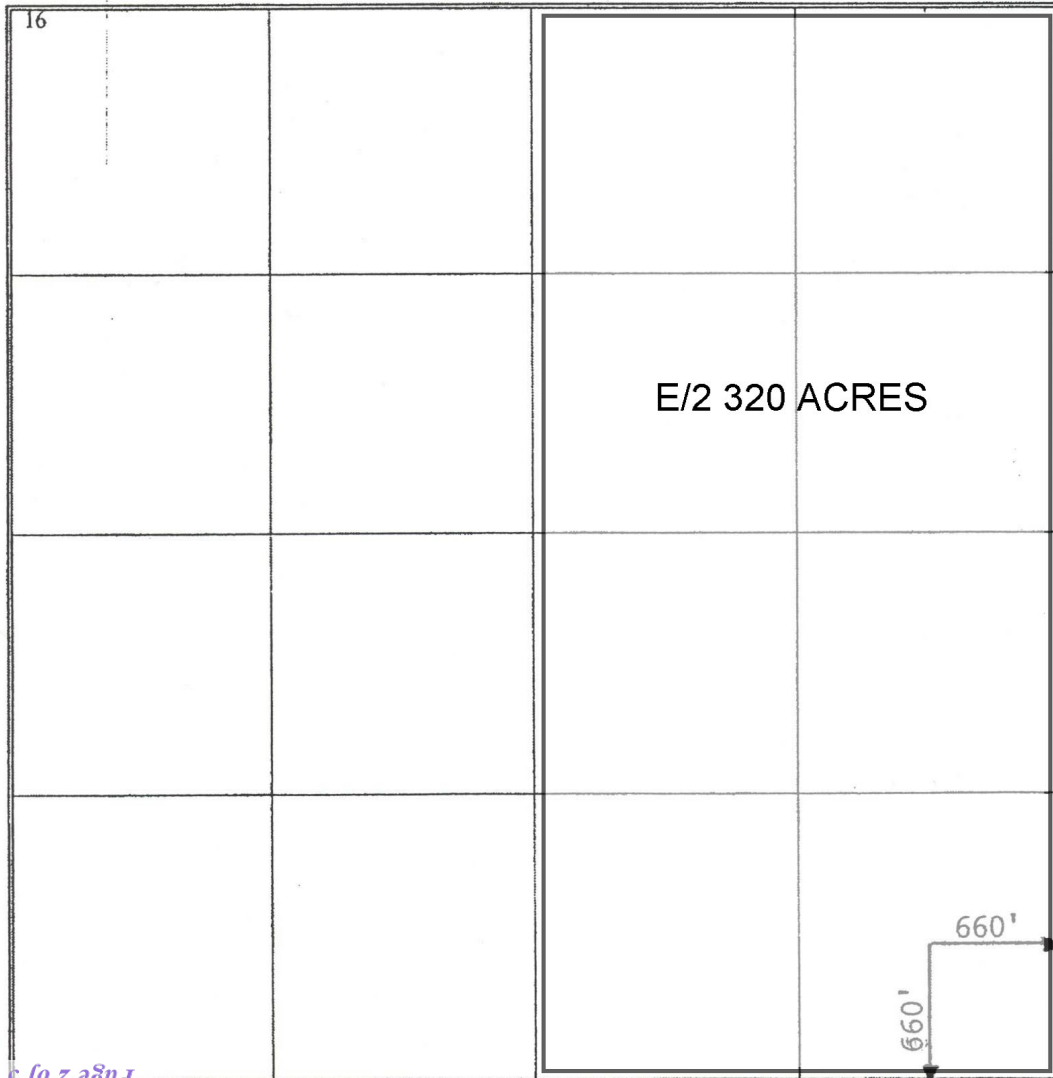
UL or lot no.	Section	Township	Range	Lot Idn	Feet from the	North/South line	Feet from the	East/West line	County
P	2	12S	26E		660	South	660	East	Chaves

<sup>11</sup> Bottom Hole Location If Different From Surface

UL or lot no.	Section	Township	Range	Lot Idn	Feet from the	North/South line	Feet from the	East/West line	County

<sup>12</sup> Dedicated Acres 320	<sup>13</sup> Joint or Infill	<sup>14</sup> Consolidation Code	<sup>15</sup> Order No.
--------------------------------------	-------------------------------	----------------------------------	-------------------------

No allowable will be assigned to this completion until all interests have been consolidated or a non-standard unit has been approved by the division.

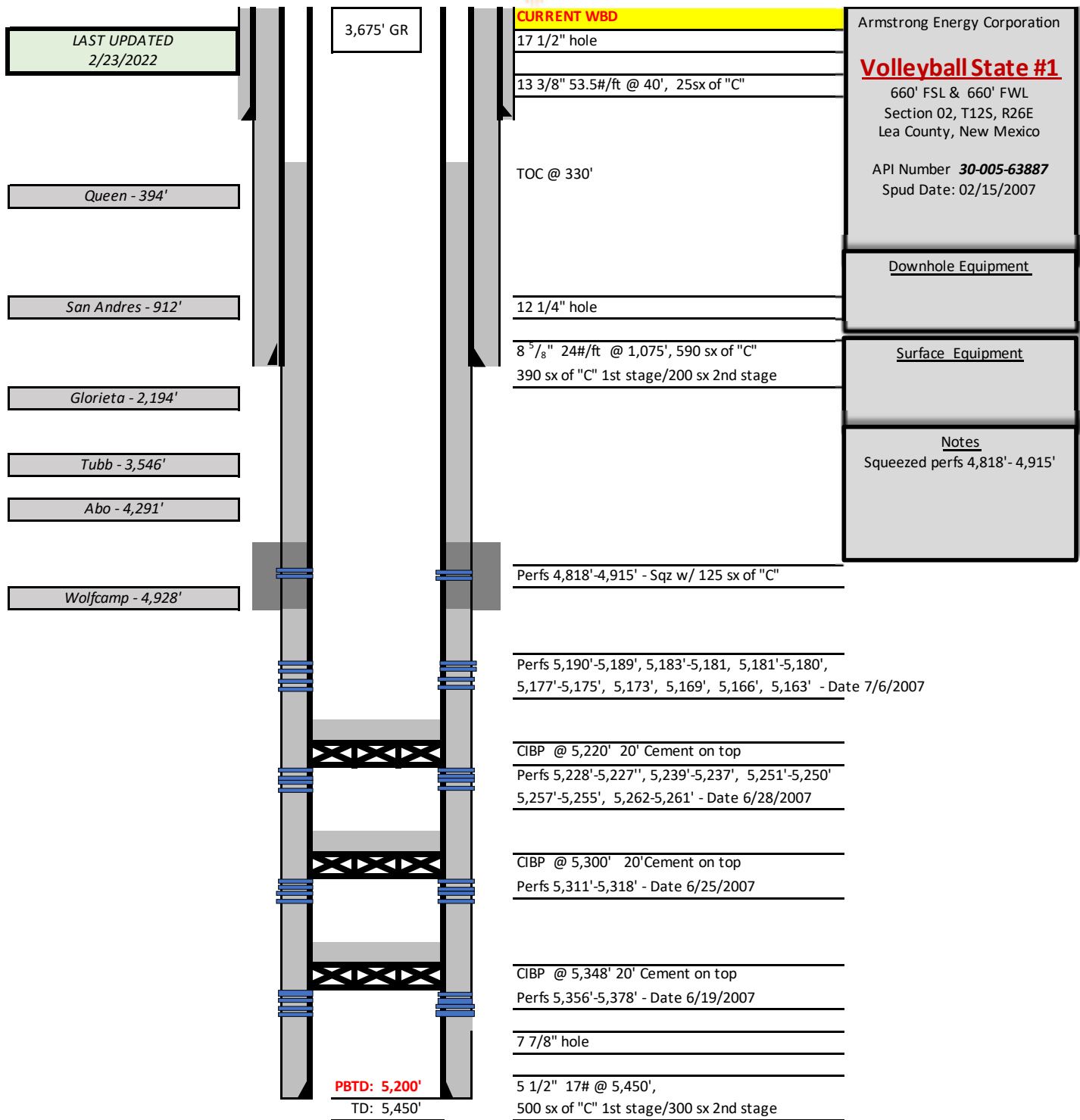


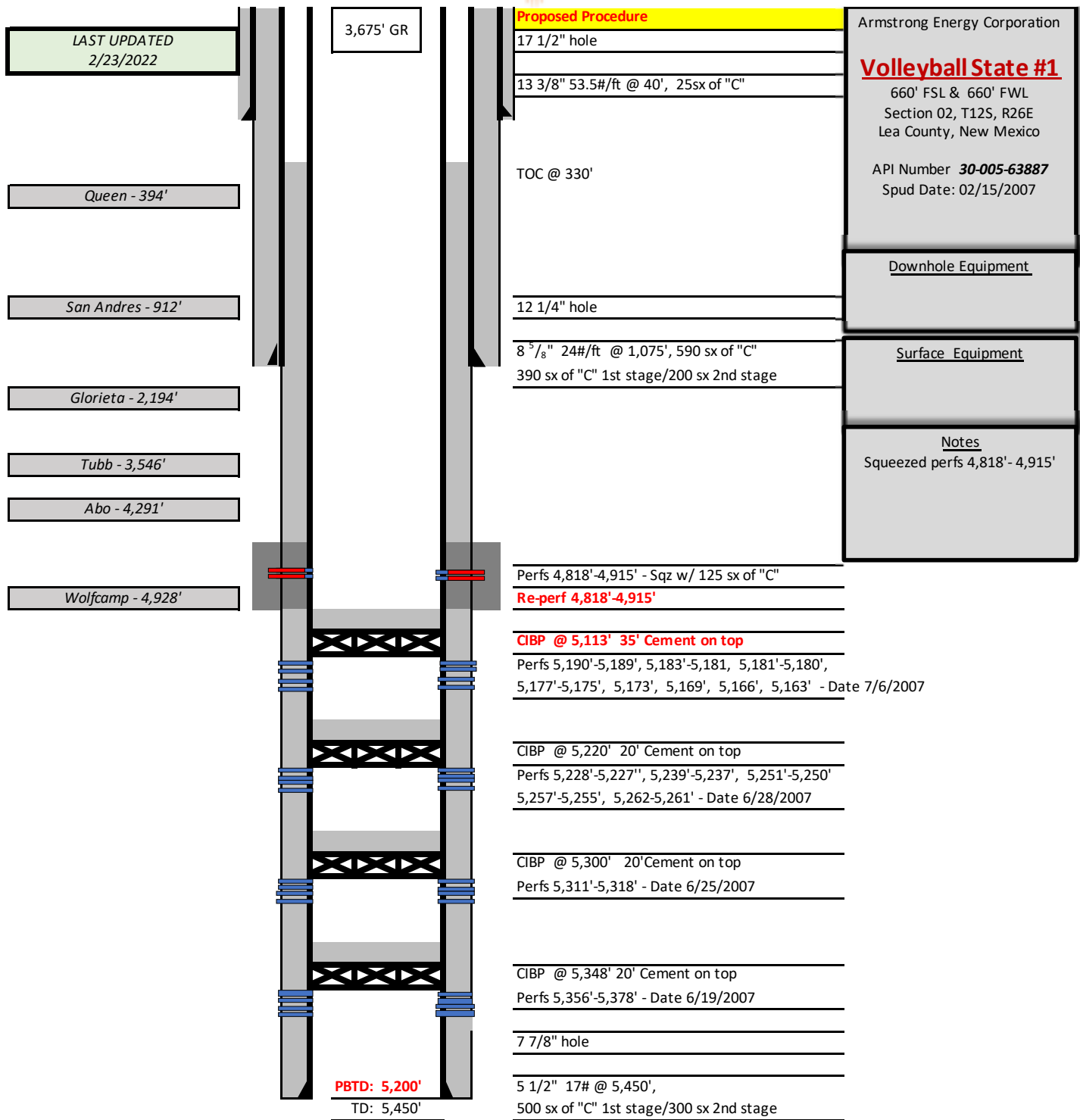
<sup>17</sup> **OPERATOR CERTIFICATION**  
 I hereby certify that the information contained herein is true and complete to the best of my knowledge and belief, and that this organization either owns a working interest or unleased mineral interest in the land including the proposed bottom hole location or has a right to drill this well at this location pursuant to a contract with an owner of such a mineral or working interest, or to a voluntary pooling agreement or a compulsory pooling order heretofore entered by the division.  
 Signature: *Bruce A. Stubbs* Date: 1-4-2007

Bruce A. Stubbs  
Printed Name

<sup>18</sup> **SURVEYOR CERTIFICATION**  
 I hereby certify that the well location shown on this plat was plotted from field notes of actual surveys made by me or under my supervision, and that the same is true and correct to the best of my belief.  
 11/28/06

Date of Survey  
 Signature and Seal of Professional Surveyor:  
  
 Certificate Number: 6290





**District I**  
 1625 N. French Dr., Hobbs, NM 88240  
 Phone:(575) 393-6161 Fax:(575) 393-0720

**District II**  
 811 S. First St., Artesia, NM 88210  
 Phone:(575) 748-1283 Fax:(575) 748-9720

**District III**  
 1000 Rio Brazos Rd., Aztec, NM 87410  
 Phone:(505) 334-6178 Fax:(505) 334-6170

**District IV**  
 1220 S. St Francis Dr., Santa Fe, NM 87505  
 Phone:(505) 476-3470 Fax:(505) 476-3462

**State of New Mexico**  
**Energy, Minerals and Natural Resources**  
**Oil Conservation Division**  
**1220 S. St Francis Dr.**  
**Santa Fe, NM 87505**

CONDITIONS  
 Action 83825

**CONDITIONS**

Operator: ARMSTRONG ENERGY CORP P.O. Box 1973 Roswell, NM 88202	OGRID: 1092
	Action Number: 83825
	Action Type: [C-101] Drilling Non-Federal/Indian (APD)

**CONDITIONS**

Created By	Condition	Condition Date
kpickford	Notify NMOCD 24 Hours Prior to beginning operations	9/8/2022