

Submit 1 Copy To Appropriate District Office

District I – (575) 393-6161  
1625 N. French Dr., Hobbs, NM 88240  
District II – (575) 748-1283  
811 S. First St., Artesia, NM 88210  
District III – (505) 334-6178  
1000 Rio Brazos Rd., Aztec, NM 87410  
District IV – (505) 476-3460  
1220 S. St. Francis Dr., Santa Fe, NM 87505

State of New Mexico  
Energy, Minerals and Natural Resources

OIL CONSERVATION DIVISION  
1220 South St. Francis Dr.  
Santa Fe, NM 87505

Form C-103

Revised July 18, 2013

SUNDRY NOTICES AND REPORTS ON WELLS (DO NOT USE THIS FORM FOR PROPOSALS TO DRILL OR TO DEEPEN OR PLUG BACK TO A DIFFERENT RESERVOIR. USE "APPLICATION FOR PERMIT" (FORM C-101) FOR SUCH PROPOSALS.)		WELL API NO. 30-025-07021
1. Type of Well: Oil Well <input checked="" type="checkbox"/> Gas Well <input type="checkbox"/> Other <input type="checkbox"/>		5. Indicate Type of Lease STATE <input type="checkbox"/> FEE <input checked="" type="checkbox"/>
2. Name of Operator J R Oil Ltd, Co.		6. State Oil & Gas Lease No. 330348
3. Address of Operator PO Box 2975, Hobbs, NM 88241		7. Lease Name or Unit Agreement Name Owen
4. Well Location Unit Letter <u>P</u> : <u>660</u> feet from the <u>South</u> line and <u>660</u> feet from the <u>East</u> line Section <u>35</u> Township <u>21S</u> Range <u>37E</u> NMPM County <u>Lea</u>		8. Well Number <u>1</u>
11. Elevation (Show whether DR, RKB, RT, GR, etc.) 3,368' GL		9. OGRID Number 256073
		10. Pool name or Wildcat Wantz, Abo; Wantz, Granite Wash

## 12. Check Appropriate Box to Indicate Nature of Notice, Report or Other Data

**NOTICE OF INTENTION TO:**

PERFORM REMEDIAL WORK ☐ PLUG AND ABANDON ☐  
**TEMPORARILY ABANDON** ☒ CHANGE PLANS ☐  
 PULL OR ALTER CASING ☐ MULTIPLE COMPL ☐  
 DOWNHOLE COMMINGLE ☐  
 CLOSED-LOOP SYSTEM ☐  
 OTHER: ☐

**SUBSEQUENT REPORT OF:**

REMEDIAL WORK ☐ ALTERING CASING ☐  
 COMMENCE DRILLING OPNS ☐ P AND A ☐  
 CASING/CEMENT JOB ☐  
 OTHER: ☐

13. Describe proposed or completed operations. (Clearly state all pertinent details, and give pertinent dates, including estimated date of starting any proposed work). SEE RULE 19.15.7.14 NMAC. For Multiple Completions: Attach wellbore diagram of proposed completion or recompletion.

J R Oil respectfully requests permission to temporarily abandon this wellbore by attempting to fill the well with cement from the top perf (Abo @ 6,596') to the top of the fish (179 sx Class C neat). If a satisfactory injection rate cannot be achieved an attempt will be made to spot 25 sx cement above the top perf. If that cannot be achieved a CIBP will be set on top of the fish and 35' cement dump bailed. Then log the remaining well bore for recompletion evaluation, perform a witnessed MIT, and request approved TA status.

Sep. 1, 2021 MIRU to repair inactive well, tubing and rods parted due to extreme corrosion, decide to postpone fishing.

August 29, 2022 MIRU and attempt to recover fish. Tubing extremely corroded and rods in tbg-csg annulus. See attached schematic for details.

Spud Date:

June 26, 1946

Rig Release Date:

I hereby certify that the information above is true and complete to the best of my

SIGNATURE



TITLE Engineer

DATE Sep. 8, 2022

Type or print name

Ian Petersen

E-mail address:

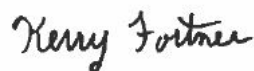
ian@ddpetro.com

PHONE:

(432) 634-4922

**For State Use Only**

APPROVED BY:



TITLE

Compliance Officer A

DATE 9/20/22

Conditions of Appro

**Condition of Approval: notify  
OCD Hobbs office 24 hours  
prior of running MIT Test & Chart**

# J R Oil Ltd., Co.

TO: NMOCD, Hobbs District  
FROM: Ian Petersen  
(432) 634-4922  
SUBJECT: Owen #1  
DATE: September 8, 2022

---

J R Oil respectfully requests permission to temporarily abandon this wellbore by attempting to fill the well with cement from the top perf (Abo @ 6,596') to the top of the fish (179 sx Class C neat). If a satisfactory injection rate cannot be achieved an attempt will be made to spot 25 sx cement above the top perf. If that cannot be achieved a CIBP will be set on top of the fish and 35' cement dump bailed. Then log the remaining well bore for recompletion evaluation, perform a witnessed MIT, and request approved TA status.

Sep. 1, 2021 MIRU to repair inactive well, tubing and rods parted due to extreme corrosion, decide to postpone fishing.

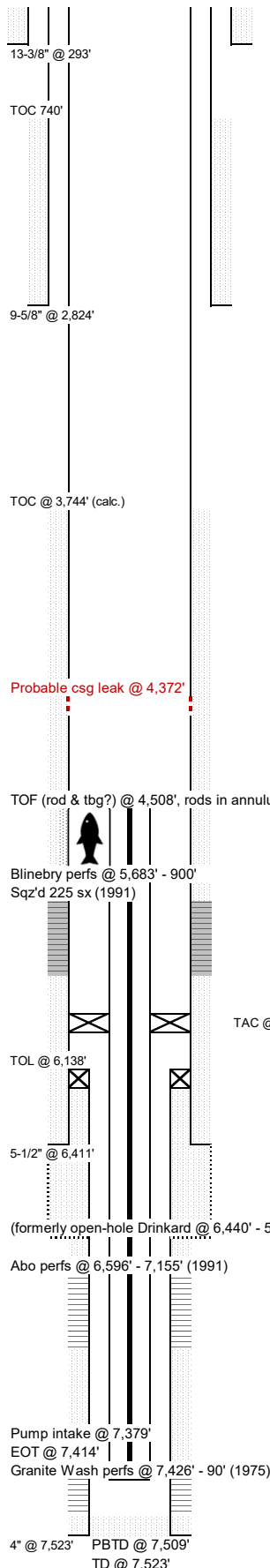
August 29, 2022 MIRU and attempt to recover fish. Tubing extremely corroded and rods in tbg-csg annulus. See attached schematic for details.

A packer will be set +/-50' above the top of the fish. An injection rate and pressure will be established and the election will be in consultation with NMOCD Inspector whether to pump 179 sacks or 25, or set CIBP only. Assuming a satisfactory injection rate is achieved an approved volume cement will be displaced so the bottom of cement is calculated to be at the top Abo perf (6,596').

After plugging is complete a preliminary casing test will be performed and a neutron log performed to evaluate recompletion potential in the remaining well bore. If mechanical integrity is intact a witnessed MIT will be performed and a request submitted for approved TA status while a recompletion in the San Andres, Grayburg, or Yates/Seven Rivers/Queen is evaluated.

## JR Oil Ltd.

## Owen #1

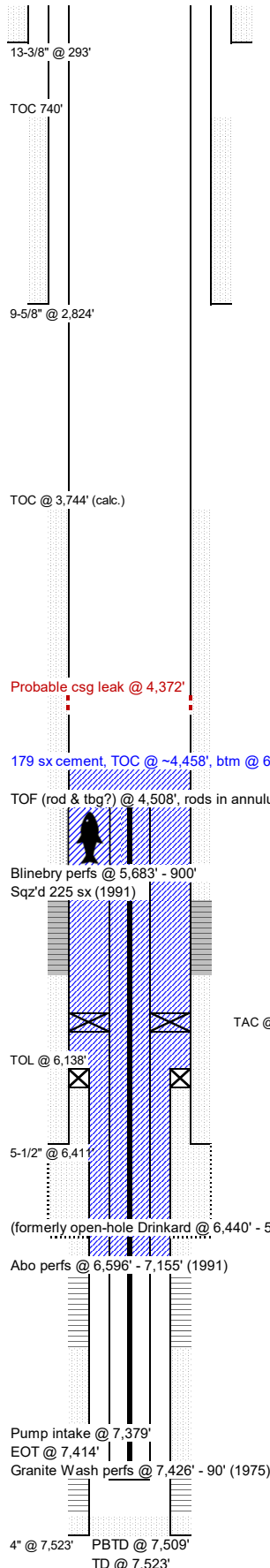


WELL NAME: Owen #1							FORMATION: Abo, Granite Wash				KB:			
API NO: 30-025-07021							FIELD: Wantz				PBDT: 7,509			
SPUD DATE: June 26, 1946							COUNTY: Lea				TD: 7,523			
CASING									CEMENT & HOLE DATA					
	joints	OD	lb/ft	grade	ID (in)	drift (in)	top	bottom	bit size	depth	sacks	TOC		
Surface		13 3/8	48.00		12.715	12.559	0'	293'	17 1/2	293'	250	surf.		
Intermediate		9 5/8	36.00	H-40	8.921	8.765	0'	2,824'	12 1/4	2,824'	1,500	740'		
Production		5 1/2	15.5, 17	J-55	4.950	4.767	0'	6,411'	7 7/8	6,535'	350	3,744' (calc.)		
Liner	35	4	11.00	K-55	3.476	3.351	6138'	7,523'	4 7/8	7,523'	85	6,138'		
<b>History:</b> 6/26/1946 Spud by Cities Service Oil Co., DST 5,118' - 215', 6,410' - 530', <b>OH complete Drinkard</b> , acidize 3k gal 12/10/1959 <b>perf Blinebry</b> , acidize 2,250 gal, frac 32.5k# sand in 32.5k gal, <b>dual complete w/ Drinkard</b> , IP 136 BOPD, GOR 2,865, 2 BWPD, API 33, FTP 425 - 560 3/24/1972 POOH dual string tbg & pkr, clean out frac sand 6,486' - 535', <b>deepen, cement liner</b> , drill out cement on top of liner, test liner to 2,000 psi/30 minutes, held, drill out cement to PBDT, <b>perf Granite Wash</b> , acidize 1,500 gal 15% HCL NE, BS, BA, no BO, ATR 4.8 TP 2,600 - 4,300, ISIP 1,700, 4" 500, swab, IP 225 BOPD, 270 MCFD, 17 BWPD, API 38.8, FTP 40 5/24/1987 POOH rods & pump, release packer, POOH tbg, set RBP @ 6,000', packer @ 5,627', swab, set retainer @ 5,560', <b>squeeze Blinebry perfs w/ 225 sx cement</b> , drill out, test to 500 psi, POOH RBP, then (see next date for perfs) 6/1/1987 <b>Perf Abo</b> , set RBP, swab Abo & acidize 6k gal 20% HCL NEFE, BS, BA, no BO, ATR 4 ATP 2,800, ISIP vac, swab 3 days, POP w/ RBP still over GW perfs. 10/19/1988 POOH rods & pump, hot oil tbg 50 bbls, POOH tbg, attempt retrieve RBP, difficult to establish returns, frac balls plugged retrieving head, <b>POOH RBP, clean out fill 7,427' - 7,509'</b> , circ. clean, SDON, tag, no fill, <b>acidize GW perfs</b> 1,500 gal 15% HCL NEFE BS, BA, no NO, ATR 5, ATP 1,525, ISIP 770, 1" vac., swab, RTP, <b>commingled Abo &amp; GW</b> 10/31/1991 Pump stuck, back off, <b>TAC stuck (@ 5,880')</b> , worked & pumped 150 BFW down csg, still stuck, free point 100% stuck underneath TAC & TAC still set, back off tbg above TAC, attempt jar, attempt free point, can't pass through fish, mill 6 days, attempt latch, dress, latched, recovered fish except part of perf sub & MABP, <b>cleanout scale 7,258' - 448'</b> , cut junk metal, <b>dress liner top</b> (getting stuck due to large metal pieces laying on liner top) w/ tapered string mill, mill to 7,470', iron sulfide & metal returns, Atlas Vertilog (appears to be a sesnitive CCL looking for reductions in thickness) <b>noted depths 592', 3,842' - 3,988', 4,372' - 4,378'</b> , wash to 7,509', <b>recover all fish</b> , attempt test tbg, couldn't pass tools due to <b>scale</b> , test w/ SV & rabbit, RIH pump & rods, load & test, RTP, pump sticking, long stroke, attempt unseat, cannot pump down tbg, pump dragging, hot water csg, continue working out, strip pump out, pump stuck in prfn, minimal scale, washed prfn into pit, 10 jts plugged, RBIH, hot water tbg 70 bbls, POOH, RIH & broach every 24 jts, (12) 2-3/8 jts of 143 couldn't get through, replace, hot water tbg, all 2-7/8 broached good, RTP 6/5/1993 Attempt to <b>jar pump</b> , release shear tool, POOH rods & tbg, holes in 3 jts above SN, RBIH tbg, hot water tbg 75 bbls, RIH pump & rods, stacked 900' from bottom, hot oil tbg 35 bbls, still stacking out, POOH rods & pump, RIH sinker bars, pump 500 gal 15% HCL flush 25 BW, soak 1.5 hrs, flush 20 BW in tbg, flush 35 BW in csg, RIH pump & rods, RTP 8/17/1994 Unseat, hot oil rods & tbg, POOH, light scale on rods, RIH, pump sticking, long stroke, quit pumping, unseat & flush, POOH rods & tbg, <b>bail fill 7,450' - 84', recover scale &amp; metal</b> , RIH tbg, swab, no fluid, RIH rods, <b>well TA'd</b> 3/25/1997 <b>Heavy paraffin</b> , hot oil csg, <b>strip rods</b> to fish, unseat, POOH rods & pump, RBIH tbg, RIH pump and rods 11/13/1997 <b>3/4 body break</b> 289 RFS, hot oil csg 35 bbls, latch, <b>pump stuck</b> , hot oil csg 20 bbls, still stuck, repeat, back off rods, POOH 20 jts, attempt swab, <b>stacked on paraffin</b> , ran prfn knife to 2,883', swab, POOH tbg, <b>mud joint full of prfn</b> , RTP 5 2/26/1998 <b>3/4 body break</b> 112 RFS, fish, unseat, hot oil tbg 50 bbls, POOH, replace (10) 1" rods due to being bent 12/10/1998 <b>Pump stuck</b> , back off, swab, <b>heavy paraffin</b> , POOH tbg, SITP 130, RIH 72 jts 2-3/8, hot oil (tbg?) 35 bbls, RIH 2-7/8 tbg, hot oil tbg 20 bbls, RIH pump and rods, <b>stacked out</b> 15 RFS, POOH, RBIH, hot oil tbg 28 bbls, tbg plugged, pressure to 3,000 psi, moved another 4 bbls before <b>plugging</b> off, attempt POOH rods, stuck, back off, swab, POOH, <b>heavy scale in tbg</b> , back off again, POOH, attempt to rabbit 2-3/8, heavy scale, replace all 2-3/8, RTP 1/2/1999 POOH rods & pump, <b>clean out fill 7,408' - 510'</b> w/ foam, trip bit & scraper, <b>acidize GW perfs</b> 4k gal 15% HCL, RS, ATR 5.7, ATP 3,105, SIP 1" vac., <b>acidize Abo perfs</b> 4k gal 15%, RS, ATR 4.5, ATP 3,780', SIP 1" vac (remainder of report NA) 8/19/2003 3/4 body break 150 RFS due to <b>corrosion</b> , pump stuck in <b>prfn</b> , replace IPC, SN, PS, BP, SITP 250, SICP 300, <b>replace (25) 3/4 rods</b> 9/1/2021 <b>3/4 body break</b> 172 RFS (4,300') due to <b>severe SRB corrosion</b> , <b>tubing parted</b> 141 JFS (4,333') for same root cause, LD all 2-3/8 and rods, SWI. 8/29/2022 Recover top jt, 3 more jts, and 10' of next jt, all severely corroded, strings/ribbons 8/30/2022 Recover 3' piece, severely corroded, couldn't recover more 8/31/2022 Mill w/ shoe 28', couldn't get back as deep w/ fishing tool 9/1/2022 Recovered 147' of rods, 17' of tbg, 12' of rods wrapped around tbg OD, new shoe cut 13', shoe worn, no fish, wear another shoe on same depth 9/2/2022 New shoe worn, cut 1', impression block recovered 4" piece of tbg & rod, 9/6/2022 Magnet recovered nothing, impression block indicates crimped tbg and rods inside & outside, new shoe cut 32' 9/7/2022 Recovered 2' piece of tbg & rod, recovered more pieces (lengths TBD tomorrow)							<b>PERFORATIONS</b>							
								top	bottom	zone	status	ttl shots	date	
								5,683'	5,900'	Blinebry	squeezed	199	12/10/59	
								6,411'	6,535'	Drinkard	(cased)	open-hole	08/14/42	
								6,596'	7,155'	Abo	active	92	06/01/87	
								7,426'	7,490'	Granite Wash	active	46	04/27/71	
							<b>TUBING (as of 9/7/2022)</b>							
								TOF	OD (in)	ID (in)	joints	length (ft)	depth (ft)	
								2 3/8	1.995				4,508	
								Tubing	2 3/8		49.5	1,533.38	6,041	
	TAC	5 1/2		1	2.75	6,044								
	Tubing	2 3/8		42	1,300.71	7,345								
	IPC	2 3/8		1	32.30	7,377								
	SN	2 3/8	1.785	1	1.10	7,378								
	Perf sub	2 3/8		1	4.10	7,382								
	BPMA	2 3/8		2	31.37	7,414								
<b>RODS (as of 9/7/2022)</b>														
	TOF??	3/4				4,508								
	Sucker rods	3/4	KD	114??	2,850.0	7,358								
	Guide sub	1		1	4.0	7,362								
	RHBC	1			1.0	7,363								
	Pump	1 1/4	RHBC		20.0	7,383								
	Gas anchor	1			1.0	7,384								

Updated: September 7, 2022 by Ian Petersen

## JR Oil Ltd.

## Owen #1 PROPOSED 1



WELL NAME: Owen #1				FORMATION: Abo, Granite Wash				KB:					
API NO: 30-025-07021				FIELD: Wantz				PBTD: 7,509					
SPUD DATE: June 26, 1946				COUNTY: Lea				TD: 7,523					
CASING								CEMENT & HOLE DATA					
	joints	OD	lb/ft	grade	ID (in)	drift (in)	top	bottom	bit size	depth	sacks	TOC	
Surface		13 3/8	48.00		12.715	12.559	0'	293'	17 1/2	293'	250	surf.	
Intermediate		9 5/8	36.00	H-40	8.921	8.765	0'	2,824'	12 1/4	2,824'	1,500	740'	
Production		5 1/2	15.5, 17	J-55	4.950	4.767	0'	6,411'	7 7/8	6,535'	350	3,744' (calc.)	
Liner	35	4	11.00	K-55	3.476	3.351	6138'	7,523'	4 7/8	7,523'	85	6,138'	
History:							PERFORATIONS						
6/26/1946 Spud by Cities Service Oil Co., DST 5,118' - 215', 6,410' - 530', OH complete Drinkard, acidize 3k gal							top bottom zone status ttl shots date						
12/10/1959 perf Blinebry, acidize 2,250 gal, frac 32.5k# sand in 32.5k gal, dual complete w/ Drinkard, IP 136 BOPD, GOR 2,865, 2 BWPD, API 33, FTP 425 - 560							5,683' 5,900' Blinebry squeezed 199 12/10/59						
3/24/1972 POOH dual string tbg & pkr, clean out frac sand 6,486' - 535', deepen, cement liner, drill out cement on top of liner, test liner to 2,000 psi/30 minutes, held, drill out cement to PBTD, perf Granite Wash, acidize 1,500 gal 15% HCL NE, BS, BA, no BO, ATR 4.8 TP 2,600 - 4,300, ISIP 1,700, 4" 500, swab, IP 225 BOPD, 270 MCFD, 17 BWPD, API 38.8, FTP 40							6,411' 6,535' Drinkard (cased) open-hole 08/14/42						
5/24/1987 POOH rods & pump, release packer, POOH tbg, set RBP @ 6,000', packer @ 5,627', swab, set retainer @ 5,560', squeeze Blinebry perfs w/ 225 sx cement, drill out, test to 500 psi, POOH RBP, then (see next date for perfs)							6,596' 7,155' Abo active 92 06/01/87						
6/1/1987 Perf Abo, set RBP, swab Abo & acidize 6k gal 20% HCL NEFE, BS, BA, no BO, ATR 4 ATP 2,800, ISIP vac, swab 3 days, POP w/ RBP still over GW perfs.							7,426' 7,490' Granite Wash active 46 04/27/71						
10/19/1988 POOH rods & pump, hot oil tbg 50 bbls, POOH tbg, attempt retrieve RBP, difficult to establish returns, frac balls plugged retrieving head, POOH RBP, clean out fill 7,427' - 7,509', circ. clean, SDON, tag, no fill, acidize GW perfs 1,500 gal 15% HCL NEFE BS, BA, no NO, ATR 5, ATP 1,525, ISIP 770, 1" vac., swab, RTP, commingled Abo & GW							TUBING (as of 9/7/2022)						
10/31/1991 Pump stuck, back off, TAC stuck (@ 5,880'), worked & pumped 150 BFW down csg, still stuck, free point 100% stuck underneath TAC & TAC still set, back off tbg above TAC, attempt jar, attempt free point, can't pass through fish, mill 6 days, attempt latch, dress, latched, recovered fish except part of perf sub & MABP, cleanout scale 7,258' - 448', cut junk metal, dress liner top (getting stuck due to large metal pieces laying on liner top) w/ tapered string mill, mill to 7,470', iron sulfide & metal returns, Atlas Vertilog (appears to be a sesnitve CCL looking for reductions in thickness) noted depths 592', 3,842' - 3,988', 4,372' - 4,378', wash to 7,509', recover all fish, attempt test tbg, couldn't pass tools due to scale, test w/ SV & rabbit, RIH pump & rods, load & test, RTP, pump sticking, long stroke, attempt unseat, cannot pump down tbg, pump dragging, hot water csg, continue working out, strip pump out, pump stuck in prfn, minimal scale, washed prfn into pit, 10 jts plugged, RBIH, hot water tbg 70 bbls, POOH, RIH & broach every 24 jts, (12) 2-3/8 jts of 143 couldn't get through, replace, hot water tbg, all 2-7/8 broached good, RTP							TOF OD (in) ID (in) joints length (ft) depth (ft)						
6,596'							2 3/8 1.995 49.5 1,533.38 6,041						
us?							Tubing 2 3/8 42 1,300.71 7,345						
							TAC 5 1/2 1 2.75 6,044						
							IPC 2 3/8 1 32.30 7,377						
							SN 2 3/8 1.785 1 1.10 7,378						
							Perf sub 2 3/8 1 4.10 7,382						
							BPMA 2 3/8 2 31.37 7,414						

Updated: September 7, 2022 by Ian Petersen

**District I**  
1625 N. French Dr., Hobbs, NM 88240  
Phone:(575) 393-6161 Fax:(575) 393-0720  
**District II**  
811 S. First St., Artesia, NM 88210  
Phone:(575) 748-1283 Fax:(575) 748-9720  
**District III**  
1000 Rio Brazos Rd., Aztec, NM 87410  
Phone:(505) 334-6178 Fax:(505) 334-6170  
**District IV**  
1220 S. St Francis Dr., Santa Fe, NM 87505  
Phone:(505) 476-3470 Fax:(505) 476-3462

State of New Mexico  
Energy, Minerals and Natural Resources  
Oil Conservation Division  
1220 S. St Francis Dr.  
Santa Fe, NM 87505

COMMENTS  
  
Action 141486

COMMENTS

Operator: J R OIL, LTD. CO. P.O. Box 52647 Tulsa, OK 74152	OGRID: 256073
	Action Number: 141486
	Action Type: [C-103] NOI Temporary Abandonment (C-103I)

COMMENTS

Created By	Comment	Comment Date
plmartinez	PM	9/21/2022



**District I**  
1625 N. French Dr., Hobbs, NM 88240  
Phone:(575) 393-6161 Fax:(575) 393-0720  
**District II**  
811 S. First St., Artesia, NM 88210  
Phone:(575) 748-1283 Fax:(575) 748-9720  
**District III**  
1000 Rio Brazos Rd., Aztec, NM 87410  
Phone:(505) 334-6178 Fax:(505) 334-6170  
**District IV**  
1220 S. St Francis Dr., Santa Fe, NM 87505  
Phone:(505) 476-3470 Fax:(505) 476-3462

**State of New Mexico**  
**Energy, Minerals and Natural Resources**  
**Oil Conservation Division**  
**1220 S. St Francis Dr.**  
**Santa Fe, NM 87505**

CONDITIONS

Action 141486

CONDITIONS

Operator: J R OIL, LTD. CO. P.O. Box 52647 Tulsa, OK 74152	OGRID: 256073
	Action Number: 141486
	Action Type: [C-103] NOI Temporary Abandonment (C-103I)

CONDITIONS

Created By	Condition	Condition Date
kfortner	Run TA status MIT/BHT test	9/20/2022