

Office
 District I – (575) 393-6161
 1625 N. French Dr., Hobbs, NM 88240
 District II – (575) 748-1283
 811 S. First St., Artesia, NM 88210
 District III – (505) 334-6178
 1000 Rio Brazos Rd., Aztec, NM 87410
 District IV – (505) 476-3460
 1220 S. St. Francis Dr., Santa Fe, NM
 87505

State of New Mexico
 Energy, Minerals and Natural Resources

Form C-103
 Revised July 18, 2013

OIL CONSERVATION DIVISION
 1220 South St. Francis Dr.
 Santa Fe, NM 87505

WELL API NO. 30-025-48751
5. Indicate Type of Lease STATE <input checked="" type="checkbox"/> FEE <input type="checkbox"/>
6. State Oil & Gas Lease No.
7. Lease Name or Unit Agreement Name SENILE FELINES 18_7 STATE COM
8. Well Number 31H
9. OGRID Number 16696
10. Pool name or Wildcat WC-025 G-09 S223332A; WOLFCAMP & RED TANK; BONE SPRING, EAST
11. Elevation (Show whether DR, RKB, RT, GR, etc.)

SUNDRY NOTICES AND REPORTS ON WELLS (DO NOT USE THIS FORM FOR PROPOSALS TO DRILL OR TO DEEPEN OR PLUG BACK TO A DIFFERENT RESERVOIR. USE "APPLICATION FOR PERMIT" (FORM C-101) FOR SUCH PROPOSALS.)	
1. Type of Well: Oil Well <input checked="" type="checkbox"/> Gas Well <input type="checkbox"/> Other <input type="checkbox"/>	
2. Name of Operator OXY USA INC	
3. Address of Operator 5 GREENWAY PLAZA SUITE 110, HOUSTON, TX 77046	
4. Well Location Unit Letter <u>N</u> : <u>355</u> feet from the <u>S</u> line and <u>1933</u> feet from the <u>W</u> line Section <u>18</u> Township <u>22S</u> Range <u>33E</u> NMPM County LEA	
11. Elevation (Show whether DR, RKB, RT, GR, etc.)	

12. Check Appropriate Box to Indicate Nature of Notice, Report or Other Data

NOTICE OF INTENTION TO:

PERFORM REMEDIAL WORK ☐ PLUG AND ABANDON ☐
 TEMPORARILY ABANDON ☐ CHANGE PLANS ☐
 PULL OR ALTER CASING ☐ MULTIPLE COMPL ☐
 DOWNHOLE COMMINGLE ☐
 CLOSED-LOOP SYSTEM ☐
 OTHER: SURFACE COMMINGLE – PLC596D ☒

SUBSEQUENT REPORT OF:

REMEDIAL WORK ☐ ALTERING CASING ☐
 COMMENCE DRILLING OPNS. ☐ P AND A ☐
 CASING/CEMENT JOB ☐
 OTHER: ☐

13. Describe proposed or completed operations. (Clearly state all pertinent details, and give pertinent dates, including estimated date of starting any proposed work). SEE RULE 19.15.7.14 NMAC. For Multiple Completions: Attach wellbore diagram of proposed completion or recompletion.

OXY USA INC requests approval to add the RED TANK; BONE SPRING, EAST (51687) pool to SENILE FELINES 18_7 STATE COM 31H (30-025-48751) as part of PLC-596D. The additional pool and lease are currently approved as part of PLC-596D. While drilling the well, a portion of the lateral entered the Bone Spring formation. A downhole commingle permit has been filed. Allocation will be by well test per frequency and duration required by Order R-14299. The C-102s are attached.

This request is for oil production only. Gas production will be handled through an amendment to PLC-835.

Well Tests frequency and duration shall be conducted as stipulated by Order PLC-596-D

Spud Date: Rig Release Date:

I hereby certify that the information above is true and complete to the best of my knowledge and belief.

SIGNATURE Beth Schenkel TITLE REGULATORY MANAGER DATE 09/16/2022

Type or print name BETH SCHENKEL E-mail address: BETH_SCHENKEL@OXY.COM PHONE: 713-497-2055

For State Use Only

APPROVED BY: Dean R McClure TITLE Petroleum Engineer DATE 09/23/2022

Conditions of Approval (if any):

District I
1625 N. French Dr., Hobbs, NM 88240
Phone: (575) 393-6161 Fax: (575) 393-0720
District II
811 S. First St., Artesia, NM 88210
Phone: (575) 748-1283 Fax: (575) 748-9720
District III
1000 Rio Brazos Road, Aztec, NM 87410
Phone: (505) 334-6178 Fax: (505) 334-6170
District IV
1220 S. St. Francis Dr., Santa Fe, NM 87505
Phone: (505) 476-3460 Fax: (505) 476-3462

State of New Mexico
Energy, Minerals & Natural Resources Department
OIL CONSERVATION DIVISION
1220 South St. Francis Dr.
Santa Fe, NM 87505

Form C-102
Revised August 1, 2011
Submit one copy to appropriate
District Office
☒ AMENDED REPORT

WELL LOCATION AND ACREAGE DEDICATION PLAT

¹ API Number 30-025-48751	² Pool Code 51687	³ Pool Name RED TANK; BONE SPRING, EAST
⁴ Property Code 330703	⁵ Property Name SENILE FELINES 18_7 STATE COM	⁶ Well Number 31H
⁷ OGRID No. 16696	⁸ Operator Name OXY USA INC.	⁹ Elevation 3658'

¹⁰ Surface Location

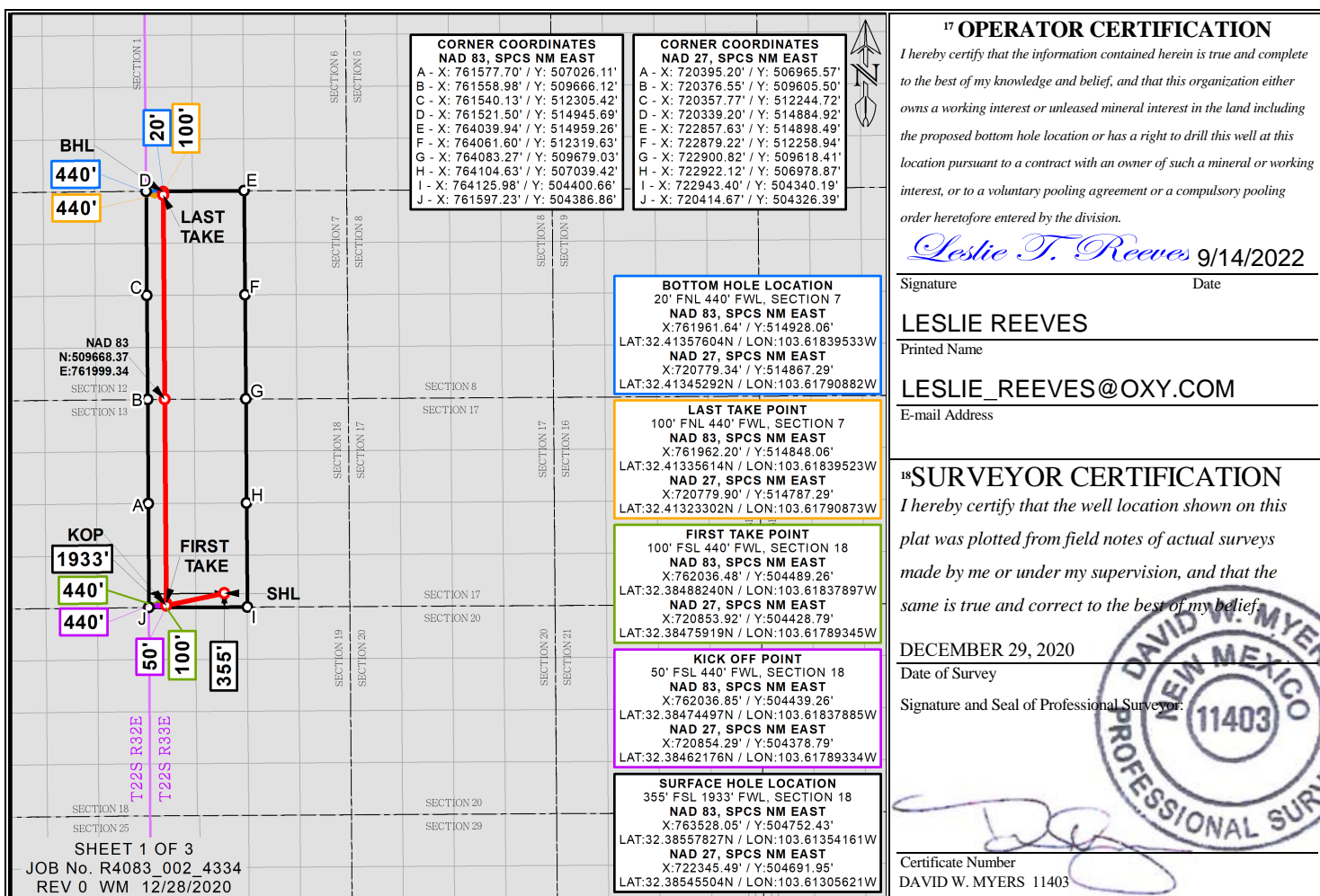
UL or lot no.	Section	Township	Range	Lot Idn	Feet from the	North/South line	Feet from the	East/West line	County
N	18	22S	33E		355	SOUTH	1933	WEST	LEA

¹¹ Bottom Hole Location If Different From Surface

UL or lot no.	Section	Township	Range	Lot Idn	Feet from the	North/South line	Feet from the	East/West line	County
L 1	7	22S	33E		20	NORTH	440	WEST	LEA

¹² Dedicated Acres 611.84	¹³ Joint or Infill	¹⁴ Consolidation Code	¹⁵ Order No.
---	-------------------------------	----------------------------------	-------------------------

No allowable will be assigned to this completion until all interests have been consolidated or a non-standard unit has been approved by the division.



Distances/areas relative to NAD 83 Combined Scale Factor: 0.9997856 Convergence Angle: 00°22'27.18"

District I
1625 N. French Dr., Hobbs, NM 88240
Phone: (575) 393-6161 Fax: (575) 393-0720

District II
811 S. First St., Artesia, NM 88210
Phone: (575) 748-1283 Fax: (575) 748-9720

District III
1000 Rio Brazos Road, Aztec, NM 87410
Phone: (505) 334-6178 Fax: (505) 334-6170

District IV
1220 S. St. Francis Dr., Santa Fe, NM 87505
Phone: (505) 476-3460 Fax: (505) 476-3462

State of New Mexico
Energy, Minerals & Natural Resources Department
OIL CONSERVATION DIVISION
1220 South St. Francis Dr.
Santa Fe, NM 87505

Form C-102
Revised August 1, 2011
Submit one copy to appropriate
District Office

☒ AMENDED REPORT

WELL LOCATION AND ACREAGE DEDICATION PLAT

¹ API Number 30-025-48751	² Pool Code 98177	³ Pool Name WC-025 G-09 S223332A; UPR WOLFCAMP
⁴ Property Code 330703	⁵ Property Name SENILE FELINES 18_7 STATE COM	
⁷ OGRID No. 16696	⁸ Operator Name OXY USA INC.	⁶ Well Number 31H ⁹ Elevation 3658'

¹⁰ Surface Location

UL or lot no.	Section	Township	Range	Lot Idn	Feet from the	North/South line	Feet from the	East/West line	County
N	18	22S	33E		355	SOUTH	1933	WEST	LEA

¹¹ Bottom Hole Location If Different From Surface

UL or lot no.	Section	Township	Range	Lot Idn	Feet from the	North/South line	Feet from the	East/West line	County
L 1	7	22S	33E		20	NORTH	440	WEST	LEA

¹² Dedicated Acres	¹³ Joint or Infill	¹⁴ Consolidation Code	¹⁵ Order No.
611.84			

No allowable will be assigned to this completion until all interests have been consolidated or a non-standard unit has been approved by the division.

CORNER COORDINATES
NAD 83, SPCS NM EAST
 A - X: 761577.70' / Y: 507026.11'
 B - X: 761558.98' / Y: 509666.12'
 C - X: 761540.13' / Y: 512305.42'
 D - X: 761521.50' / Y: 514945.69'
 E - X: 764039.94' / Y: 514959.26'
 F - X: 764061.60' / Y: 512319.63'
 G - X: 764083.27' / Y: 509679.03'
 H - X: 764104.63' / Y: 507039.42'
 I - X: 764125.98' / Y: 504400.66'
 J - X: 761597.23' / Y: 504386.86'

CORNER COORDINATES
NAD 27, SPCS NM EAST
 A - X: 720395.20' / Y: 506965.57'
 B - X: 720376.55' / Y: 509605.50'
 C - X: 720357.77' / Y: 512244.72'
 D - X: 720339.20' / Y: 514884.92'
 E - X: 722857.63' / Y: 514898.49'
 F - X: 722879.22' / Y: 512258.94'
 G - X: 722900.82' / Y: 509618.41'
 H - X: 722922.12' / Y: 506978.87'
 I - X: 722943.40' / Y: 504340.19'
 J - X: 720414.67' / Y: 504326.39'

BOTTOM HOLE LOCATION
 20' FNL 440' FWL, SECTION 7
NAD 83, SPCS NM EAST
 X: 761961.64' / Y: 514928.06'
 LAT: 32.41357604N / LON: 103.61839533W
NAD 27, SPCS NM EAST
 X: 720779.34' / Y: 514867.29'
 LAT: 32.41345292N / LON: 103.61790882W

LAST TAKE POINT
 100' FNL 440' FWL, SECTION 7
NAD 83, SPCS NM EAST
 X: 761962.20' / Y: 514848.06'
 LAT: 32.41335614N / LON: 103.61839523W
NAD 27, SPCS NM EAST
 X: 720779.90' / Y: 514787.29'
 LAT: 32.41323302N / LON: 103.61790873W

FIRST TAKE POINT
 100' FSL 440' FWL, SECTION 18
NAD 83, SPCS NM EAST
 X: 762036.48' / Y: 504489.26'
 LAT: 32.38488240N / LON: 103.61837897W
NAD 27, SPCS NM EAST
 X: 720853.92' / Y: 504428.79'
 LAT: 32.38475919N / LON: 103.61789345W

KICK OFF POINT
 50' FSL 440' FWL, SECTION 18
NAD 83, SPCS NM EAST
 X: 762036.85' / Y: 504439.26'
 LAT: 32.38474497N / LON: 103.61837885W
NAD 27, SPCS NM EAST
 X: 720854.29' / Y: 504378.79'
 LAT: 32.38462176N / LON: 103.61789334W

SURFACE HOLE LOCATION
 355' FSL 1933' FWL, SECTION 18
NAD 83, SPCS NM EAST
 X: 763528.05' / Y: 504752.43'
 LAT: 32.38557827N / LON: 103.61354161W
NAD 27, SPCS NM EAST
 X: 722345.49' / Y: 504691.95'
 LAT: 32.38545504N / LON: 103.61305621W

SECTION 1
 SECTION 2
 SECTION 3
 SECTION 4
 SECTION 5
 SECTION 6
 SECTION 7
 SECTION 8
 SECTION 9
 SECTION 10
 SECTION 11
 SECTION 12
 SECTION 13
 SECTION 14
 SECTION 15
 SECTION 16
 SECTION 17
 SECTION 18
 SECTION 19
 SECTION 20
 SECTION 21
 SECTION 22
 SECTION 23
 SECTION 24
 SECTION 25

SECTION 1
 SECTION 2
 SECTION 3
 SECTION 4
 SECTION 5
 SECTION 6
 SECTION 7
 SECTION 8
 SECTION 9
 SECTION 10
 SECTION 11
 SECTION 12
 SECTION 13
 SECTION 14
 SECTION 15
 SECTION 16
 SECTION 17
 SECTION 18
 SECTION 19
 SECTION 20
 SECTION 21
 SECTION 22
 SECTION 23
 SECTION 24
 SECTION 25

SECTION 1
 SECTION 2
 SECTION 3
 SECTION 4
 SECTION 5
 SECTION 6
 SECTION 7
 SECTION 8
 SECTION 9
 SECTION 10
 SECTION 11
 SECTION 12
 SECTION 13
 SECTION 14
 SECTION 15
 SECTION 16
 SECTION 17
 SECTION 18
 SECTION 19
 SECTION 20
 SECTION 21
 SECTION 22
 SECTION 23
 SECTION 24
 SECTION 25

SECTION 1
 SECTION 2
 SECTION 3
 SECTION 4
 SECTION 5
 SECTION 6
 SECTION 7
 SECTION 8
 SECTION 9
 SECTION 10
 SECTION 11
 SECTION 12
 SECTION 13
 SECTION 14
 SECTION 15
 SECTION 16
 SECTION 17
 SECTION 18
 SECTION 19
 SECTION 20
 SECTION 21
 SECTION 22
 SECTION 23
 SECTION 24
 SECTION 25

SECTION 1
 SECTION 2
 SECTION 3
 SECTION 4
 SECTION 5
 SECTION 6
 SECTION 7
 SECTION 8
 SECTION 9
 SECTION 10
 SECTION 11
 SECTION 12
 SECTION 13
 SECTION 14
 SECTION 15
 SECTION 16
 SECTION 17
 SECTION 18
 SECTION 19
 SECTION 20
 SECTION 21
 SECTION 22
 SECTION 23
 SECTION 24
 SECTION 25

SECTION 1
 SECTION 2
 SECTION 3
 SECTION 4
 SECTION 5
 SECTION 6
 SECTION 7
 SECTION 8
 SECTION 9
 SECTION 10
 SECTION 11
 SECTION 12
 SECTION 13
 SECTION 14
 SECTION 15
 SECTION 16
 SECTION 17
 SECTION 18
 SECTION 19
 SECTION 20
 SECTION 21
 SECTION 22
 SECTION 23
 SECTION 24
 SECTION 25

SECTION 1
 SECTION 2
 SECTION 3
 SECTION 4
 SECTION 5
 SECTION 6
 SECTION 7
 SECTION 8
 SECTION 9
 SECTION 10
 SECTION 11
 SECTION 12
 SECTION 13
 SECTION 14
 SECTION 15
 SECTION 16
 SECTION 17
 SECTION 18
 SECTION 19
 SECTION 20
 SECTION 21
 SECTION 22
 SECTION 23
 SECTION 24
 SECTION 25

SECTION 1
 SECTION 2
 SECTION 3
 SECTION 4
 SECTION 5
 SECTION 6
 SECTION 7
 SECTION 8
 SECTION 9
 SECTION 10
 SECTION 11
 SECTION 12
 SECTION 13
 SECTION 14
 SECTION 15
 SECTION 16
 SECTION 17
 SECTION 18
 SECTION 19
 SECTION 20
 SECTION 21
 SECTION 22
 SECTION 23
 SECTION 24
 SECTION 25

SECTION 1
 SECTION 2
 SECTION 3
 SECTION 4
 SECTION 5
 SECTION 6
 SECTION 7
 SECTION 8
 SECTION 9
 SECTION 10
 SECTION 11
 SECTION 12
 SECTION 13
 SECTION 14
 SECTION 15
 SECTION 16
 SECTION 17
 SECTION 18
 SECTION 19
 SECTION 20
 SECTION 21
 SECTION 22
 SECTION 23
 SECTION 24
 SECTION 25

SECTION 1
 SECTION 2
 SECTION 3
 SECTION 4
 SECTION 5
 SECTION 6
 SECTION 7
 SECTION 8
 SECTION 9
 SECTION 10
 SECTION 11
 SECTION 12
 SECTION 13
 SECTION 14
 SECTION 15
 SECTION 16
 SECTION 17
 SECTION 18
 SECTION 19
 SECTION 20
 SECTION 21
 SECTION 22
 SECTION 23
 SECTION 24
 SECTION 25

SECTION 1
 SECTION 2
 SECTION 3
 SECTION 4
 SECTION 5
 SECTION 6
 SECTION 7
 SECTION 8
 SECTION 9
 SECTION 10
 SECTION 11
 SECTION 12
 SECTION 13
 SECTION 14
 SECTION 15
 SECTION 16
 SECTION 17
 SECTION 18

Distances/areas relative to NAD 83 Combined Scale Factor: 0.9997856 Convergence Angle: 00°22'27.18"

District I

1625 N. French Dr., Hobbs, NM 88240
Phone:(575) 393-6161 Fax:(575) 393-0720

District II

811 S. First St., Artesia, NM 88210
Phone:(575) 748-1283 Fax:(575) 748-9720

District III

1000 Rio Brazos Rd., Aztec, NM 87410
Phone:(505) 334-6178 Fax:(505) 334-6170

District IV

1220 S. St Francis Dr., Santa Fe, NM 87505
Phone:(505) 476-3470 Fax:(505) 476-3462

State of New Mexico
Energy, Minerals and Natural Resources
Oil Conservation Division
1220 S. St Francis Dr.
Santa Fe, NM 87505

CONDITIONS

Action 144112

CONDITIONS

Operator: OXY USA INC P.O. Box 4294 Houston, TX 772104294	OGRID: 16696
	Action Number: 144112
	Action Type: [C-103] NOI General Sundry (C-103X)

CONDITIONS

Created By	Condition	Condition Date
dmcclure	Well Tests frequency and duration shall be conducted as stipulated by Order PLC-596-D	9/23/2022
dmcclure	Please review the content of the order to ensure you are familiar with the authorities granted and any conditions of approval. If you have any questions regarding this matter, please contact me.	9/23/2022