

Well Name: TURNER HUGHES	Well Location: T27N / R9W / SEC 4 / NWSW / 36.600296 / -107.797256	County or Parish/State: SAN JUAN / NM
Well Number: 8	Type of Well: CONVENTIONAL GAS WELL	Allottee or Tribe Name:
Lease Number: NMSF078050	Unit or CA Name:	Unit or CA Number:
US Well Number: 300450681800S2	Well Status: Abandoned	Operator: MORNINGSTAR PARTNERS LP

Subsequent Report

Sundry ID: 2687051

Type of Submission: Subsequent Report	Type of Action: Plug and Abandonment
Date Sundry Submitted: 08/15/2022	Time Sundry Submitted: 08:06
Date Operation Actually Began: 07/25/2022	

Actual Procedure: MorningStar has permanently plugged and abandoned the Turner Hughes #8 as of 8/04/2022. Attached are the Daily and Cement Reports, Final WBD, and CBL.

SR Attachments

Actual Procedure

PA_Daily_Rpts_WBD__CBL_Turner_Hughes_8_20220815080546.pdf

Well Name: TURNER HUGHES	Well Location: T27N / R9W / SEC 4 / NWSW / 36.600296 / -107.797256	County or Parish/State: SAN JUAN / NM
Well Number: 8	Type of Well: CONVENTIONAL GAS WELL	Allottee or Tribe Name:
Lease Number: NMSF078050	Unit or CA Name:	Unit or CA Number:
US Well Number: 300450681800S2	Well Status: Abandoned	Operator: MORNINGSTAR PARTNERS LP

Operator

I certify that the foregoing is true and correct. Title 18 U.S.C. Section 1001 and Title 43 U.S.C. Section 1212, make it a crime for any person knowingly and willfully to make to any department or agency of the United States any false, fictitious or fraudulent statements or representations as to any matter within its jurisdiction. Electronic submission of Sundry Notices through this system satisfies regulations requiring a

Operator Electronic Signature: CONNIE BLAYLOCK

Signed on: AUG 15, 2022 08:05 AM

Name: MORNINGSTAR PARTNERS LP

Title: Regulatory Technician

Street Address: 400 W 7th St.

City: Forth Worth

State: TX

Phone: (817) 334-7882

Email address: CBLAYLOCK@MSPARTNERS.COM

Field

Representative Name: Amy Byars

Street Address:

City:

State:

Zip:

Phone:

Email address: abyars@mspartners.com

BLM Point of Contact

BLM POC Name: KENNETH G RENNICK

BLM POC Title: Petroleum Engineer

BLM POC Phone: 5055647742

BLM POC Email Address: krennick@blm.gov

Disposition: Accepted

Disposition Date: 08/18/2022

Signature: Kenneth Rennick

Morningstar Operating LLC

Plug And Abandonment End Of Well Report

Turner Hughes #008

1500' FSL & 1020' FWL, Section 4, 27N, 09W

San Juan County, NM / API 30-045-06818

Work Summary:

- 7/24/22** Made BLM and NMOCD P&A operations notifications at 9:00 AM MST.
- 7/25/22** MOL and R/U P&A rig. Checked well pressures: Tubing 320 psi, Casing: 0 psi, Bradenhead: 0 psi. Bled down well. N/D wellhead. N/U BOP and function tested. Un-seat packer. TOOH with 44 joints of 2-7/8" tubing, packer, 31 additional joints of 2-7/8" tubing, S/N, and 4' x 2-7/8" pup. Secured and shut in well for the day.
- 7/26/22** Checked well pressures: Tubing 0 psi, Casing: 0 psi, Bradenhead: 0 psi. Bled down well. TIH with 5.5" casing scraper to 2278'. TOOH. Remove casing scraper and install 5.5" CR. TIH and set CR at 2247'. TOOH. Fill casing. R/U wireline. Ran CBL from CR at 2247' to surface. CBL results were sent to NMOCD office for review. R/D wire line. Secured and shut in well for the day.
- 7/27/22** Services idled for 7/27/22.
- 7/28/22** Checked well pressures: Tubing: 0 psi, Casing: 0 psi, Bradenhead: 0 psi. Bled down well. R/U cementing services. Attempted to pressure test production casing, casing failed to hold pressure. Pumped plug #1 from 2247' to approximately 1992' to cover the Fruitland perforations and formation top. TOOH. WOC 4 hours. TIH and tagged top of Plug #1 at 2041'. TOOH. TIH with packer and set at 329'. Attempted to pressure test production casing. Casing failed to hold pressure and water began coming out of casing valves. Unset packer. L/D 2 joints. Reset packer at 269'. Attempted to pressure test casing below the packer and casing failed pressure test.

Pressure tested casing above the packer and casing held pressure to 800 psi. Unset packer and TOOH. R/U wireline services. RIH and perforated at 1483'. R/D wireline services. TIH with packer and set at 1429'. Attempted to establish injection rate but water began coming out of the casing valve. Unset packer. L/D 1 Joint and set packer again. Attempted to establish injection rate but again fluid began coming out of the casing valve. Unset packer. TOOH. Secured and shut in well for the day.

8/01/22 Checked well pressures: Tubing: 0 psi, Casing: 0 psi, Bradenhead: 0 psi. Bled down well. TOOH and L/D packer. TIH to 597' with bull plug. Successfully pressure tested tubing to 800 psi. TOOH. TIH to 1698'. R/U cementing services. Pumped plug #2 from 1698' to approximately 1338' to cover the Kirtland formation top. R/D cementing services. L/D 12 joints and TOOH. WOC 4 hours. TIH tagged top of plug #2 at 1456'. R/U cementing services. Continued pumping plug #2 from 1456' to approximately 1333' to cover the Ojo Alamo formation top. R/D cementers. L/D 5 joints and TOOH. WOC overnight. Secured and shut in well for the day.

8/02/22 Checked well pressures: Tubing: 0 psi, Casing: 0 psi, Bradenhead: 0 psi. Bled down well. TIH and tagged TOC at 1323'. LD 26 joints and TOOH. R/U wireline services. RIH and perforated at 436'. R/D wireline services. TIH to 448'. R/U cementing services. Pumped Plug #3 from 448' to approx. 200' to cover Nacimiento formation top. R/D cementing services. L/D 7 joints and TOOH. Pressured up casing to 100 psi. WOC 4 hours. Casing was on vacuum. TIH, didn't tag cement. Tripped to a depth of 538'. L/D 3 joints. R/U cementing services. Re-pumped Plug #3 from 448' to approximately 200' to cover Nacimiento formation top. R/D cementing services. L/D 7 joints and TOOH. WOC 4 hours. TIH and tagged the top of plug #3 at 337'. L/D 5 joint and TOOH. Received approval from Monica Kuehling (NMOCD) and Bill Diers (BLM) for plug #3. Secured and shut in well for the day.

8/03/22 Checked well pressures: Tubing: 0 psi, Casing: 0 psi, Bradenhead: 0 psi. Bled down well. TIH to 177'. Waited on cement to arrive on location. R/U cementers. Pumped Plug #4 from 177' to surface to cover the casing shoe. L/D tubing. R/D floor. N/D BOP. N/U wellhead. WOC overnight. Secured and shut in well for the day.

8/04/22 Checked well pressures: Tubing: 0 psi, Casing: 0 psi, Bradenhead: 0 psi. Bled down well. Dug around wellhead and cut off wellhead. Cement was at surface in 5.5" casing, and approximately 25' below surface in 8-5/8" casing. Installed P&A marker per NMOCD regulations. Ran 3/4" poly pipe down 8-5/8" surface casing annulus to 25'. R/U cementing services. Pumped cement from approximately

25' to surface in 8-5/8" casing annulus and filled cellar. R/D cementing services. Photographed the P&A marker in place and recorded its location via GPS coordinates. R/D and MOL.

Plug Summary:

Plug #1: (Fruitland Perforations and Formation Top 2,247'-2,041', 25 Sacks Type III Cement)

Mixed 25 sx Type III cement and spotted a balanced plug to cover the Fruitland perforations and formation top.

Plug #2: (Ojo Alamo and Kirtland Formation Top 1,698'-1,323', 47 Sacks Type III Cement)

Mixed 47 sx Type III cement and spotted a balanced plug to cover the Ojo Alamo and Kirtland formation tops.

Plug #3: (Nacimiento Formation Top 448'-337', 40 Sacks Type III Cement [20 sx into perforations])

RIH and perforated at 436'. Pumped Plug #3 from 448' to approx. 200' to cover Nacimiento formation top. Pressured up casing to 100 psi. WOC 4 hours. Casing was on vacuum. TIH, didn't tag cement. Tripped to a depth of 538'. Re-pumped Plug #3 from 448' to approximately 200' to cover Nacimiento formation top. WOC 4 hours. TIH and tagged the top of plug #3 at 337'. Received approval from Monica Kuehling (NMOCD) and Bill Diers (BLM) for plug #3. Secured and shut in well for the day.

Plug #4: (Casing Shoe and Surface 177'-Surface', 40 Sacks Type III Cement [20 sx for top off])

Mixed 20 sx Type III cement and spotted a balanced plug to cover the surface casing shoe. WOC. Cement was at surface in 5.5" casing, and approximately 25' below surface in 8-5/8" casing. Ran 3/4" poly pipe down 8-5/8" surface casing annulus to 25'. Pumped 20 sx Type III cement from 25' to surface in 8-5/8" casing annulus and filled cellar.

P & A Daily Report



PO Box 538 Farmington, NM 87499 505.327.7301

Company:	Morningstar Operating
Well Name:	Turner Hughes #8
API #:	30-045-06818
Date:	7/25/2022

WORK SUMMARY

MOL and R/U P&A rig. Checked well pressures (see pressures below). Bled down well. N/D wellhead. N/U BOP and function tested. Un-seat packer. TOO H with 44 joints of 2-7/8" tubing, packer, 31 additional joints of 2-7/8" tubing, S/N, and 4' x 2-7/8" pup. Secured and shut in well for the day.

PLUG SUMMARY

<u>Plug No</u>	<u>Plug Depth</u>	<u>Sacks of Cement Used</u>
Plug 1	To	
Plug 2	To	
Plug 3	To	
Plug 4	To	
Plug 5	To	
Plug 6	To	
Plug 7	To	
Plug 8	To	
Plug 9	To	

BRIDGE PLUG/CEMENT RETAINER SUMMARY

<u>Depth Set</u>

WELL PRESSURES

Tubing	320 psi
Casing	0 psi
Bradenhead	0 psi

P & A Daily Report



PO Box 538 Farmington, NM 87499 505.327.7301

Company:	Morningstar Operating
Well Name:	Turner Hughes #8
API #:	30-045-06818
Date:	7/26/2022

WORK SUMMARY

Checked well pressures (see pressures below). Bled down well. TIH with 5.5" casing scraper to 2278'. TOOH. Remove casing scraper and install 5.5" CR. TIH and set at 2247'. TOOH. Fill casing. R/U wireline. Ran CBL from CR at 2247' to surface. CBL results were sent to NMOCD office for review. R/D wire line. Secured and shut in well for the day.

PLUG SUMMARY

<u>Plug No</u>	<u>Plug Depth</u>	<u>Sacks of Cement Used</u>
Plug 1	To	
Plug 2	To	
Plug 3	To	
Plug 4	To	
Plug 5	To	
Plug 6	To	
Plug 7	To	
Plug 8	To	
Plug 9	To	

BRIDGE PLUG/CEMENT RETAINER SUMMARY

<u>Depth Set</u>
2247'

WELL PRESSURES

Tubing	0 psi
Casing	0 psi
Bradenhead	0 psi

P & A Daily Report



PO Box 538 Farmington, NM 87499 505.327.7301

Company:	Morningstar Operating
Well Name:	Turner Hughes #8
API #:	30-045-06818
Date:	7/27/2022

WORK SUMMARY

Services idled for 7/27/22.

PLUG SUMMARY

<u>Plug No</u>	<u>Plug Depth</u>	<u>Sacks of Cement Used</u>
Plug 1	To	
Plug 2	To	
Plug 3	To	
Plug 4	To	
Plug 5	To	
Plug 6	To	
Plug 7	To	
Plug 8	To	
Plug 9	To	

BRIDGE PLUG/CEMENT RETAINER SUMMARY

<u>Depth Set</u>
2247'

WELL PRESSURES

Tubing	0 psi
Casing	0 psi
Bradenhead	0 psi

P & A Daily Report



PO Box 538 Farmington, NM 87499 505.327.7301

Company:	Morningstar Operating
Well Name:	Turner Hughes #8
API #:	30-045-06818
Date:	7/28/2022

WORK SUMMARY

Checked well pressures (see pressures below). Bled down well. R/U cementing services. Attempted to pressure test production casing, casing failed to hold pressure. Pumped plug #1 from 2247' to approximately 1992' to cover the Fruitland perforations and formation top. TOOH. WOC 4 hours. TIH and tagged top of Plug #1 at 2041'. TOOH. TIH with packer and set at 329'. Attempted to pressure test production casing. Casing failed to hold pressure and water began coming out of casing valves. Unset packer. L/D 2 joints. Reset packer at 269'. Attempted to pressure test casing below the packer and casing failed pressure test. Pressure tested casing above the packer and casing held pressure to 800 psi. Unset packer and TOOH. R/U wireline services. RIH and perforated at 1483'. R/D wireline services. TIH with packer and set at 1429'. Attempted to establish injection rate but water began coming out of the casing valve. Unset packer. L/D 1 Joint and set packer again. Attempted to establish injection rate but again fluid began coming out of the casing valve. Unset packer. TOOH. Secured and shut in well for the day.

PLUG SUMMARY

<u>Plug No</u>	<u>Plug Depth</u>	<u>Sacks of Cement Used</u>
Plug 1 2247'	To 2041'	25 Sacks of Type III
Plug 2	To	
Plug 3	To	
Plug 4	To	
Plug 5	To	
Plug 6	To	
Plug 7	To	
Plug 8	To	
Plug 9	To	

BRIDGE PLUG/CEMENT RETAINER SUMMARY

<u>Depth Set</u>
2247'

WELL PRESSURES

Tubing	0 psi
Casing	0 psi
Bradenhead	0 psi

P & A Daily Report



PO Box 538 Farmington, NM 87499 505.327.7301

Company:	Morningstar Operating
Well Name:	Turner Hughes #8
API #:	30-045-06818
Date:	8/1/2022

WORK SUMMARY

Checked well pressures (see pressures below). Bled down well. TOOH to remove packer. TIH to 597' with bull plug. Successfully pressure tested tubing to 800 psi. TOOH. TIH to 1698'. R/U cementing services. Pumped plug #2 from 1698' to approximately 1338' to cover the Kirtland formation top. R/D cementing services. L/D 12 joints and TOOH. WOC 4 hours. TIH tagged top of plug #2 at 1456'. R/U cementing services. Continued pumping plug #2 from 1456' to approximately 1333' to cover the Ojo Alamo formation top. R/D cementers. L/D 5 joints and TOOH. WOC overnight. Secured and shut in well for the day.

PLUG SUMMARY

<u>Plug No</u>		<u>Plug Depth</u>		<u>Sacks of Cement Used</u>
Plug 1	2247'	To	2041'	25 sx of Type III
Plug 2	1698'	To	1333'	47 sx of type III
Plug 3		To		
Plug 4		To		
Plug 5		To		
Plug 6		To		
Plug 7		To		
Plug 8		To		
Plug 9		To		

BRIDGE PLUG/CEMENT RETAINER SUMMARY

<u>Depth Set</u>
2247'

WELL PRESSURES

Tubing	0 psi
Casing	0 psi
Bradenhead	0 psi

P & A Daily Report



PO Box 538 Farmington, NM 87499 505.327.7301

Company:	Morningstar Operating
Well Name:	Turner Hughes #8
API #:	30-045-06818
Date:	8/2/2022

WORK SUMMARY

Checked well pressures (see pressures below). Bled down well. TIH and tagged TOC at 1323'. LD 26 joints and TOOH. R/U wireline services. RIH and perforated at 436'. R/D wireline services. TIH to 448'. R/U cementing services. Pumped Plug #3 from 448' to approx. 200' to cover Nacimiento formation top. R/D cementing services. L/D 7 joints and TOOH. Pressured up casing to 100 psi. WOC 4 hours. Casing was on vacuum. TIH didn't tag any cement, tripped to a depth of 538'. L/D 3 joints. R/U cementing services. Re-pumped Plug #3 from 448' to approximately 200' to cover Nacimiento formation top. R/D cementing services. L/D 7 joints and TOOH. WOC 4 hours. TIH and tagged the top of plug #3 at 337'. L/D 5 joint and TOOH. Received approval from Monica Kuehling (NMOCD) and Bill Diers (BLM) for plug #3. Secured and shut in well for the day.

PLUG SUMMARY

<u>Plug No</u>		<u>Plug Depth</u>		<u>Sacks of Cement Used</u>
Plug 1	2247'	To	2041'	25 sx of Type III
Plug 2	1698'	To	1323'	47 sx of Type III
Plug 3	448'	To	337'	40 sx of Type III (20 sx into perforations)
Plug 4		To		
Plug 5		To		
Plug 6		To		
Plug 7		To		
Plug 8		To		
Plug 9		To		

BRIDGE PLUG/CEMENT RETAINER SUMMARY

<u>Depth Set</u>
2247'

WELL PRESSURES

Tubing	0 psi
Casing	0 psi
Bradenhead	0 psi

Drake

WELL SERVICE INC.



PO Box 538 Farmington, NM 87499 505.327.7301

P & A Daily Report

Company: Morningstar Operating

Well Name: Turner Hughes #8

API #: 30-045-06818

Date: 8/3/2022

WORK SUMMARY

Checked well pressures (see pressures below). Bled down well. TIH to 177'. Waited on cement to arrive on location. R/U cementers. Pumped Plug #4 from 177' to surface to cover the casing shoe. L/D tubing. R/D floor. N/D BOP. N/U wellhead. WOC overnight. Secured and shut in well for the day.

PLUG SUMMARY

<u>Plug No</u>	<u>Plug Depth</u>	<u>Sacks of Cement Used</u>
Plug 1 2247'	To 2041'	25 sx of Type III
Plug 2 1698'	To 1323'	47 sx of Type III
Plug 3 448'	To 337'	40 sx of Type III (20 sx into perforations)
Plug 4 177'	To Surface	20 sx of Type III
Plug 5	To	
Plug 6	To	
Plug 7	To	
Plug 8	To	
Plug 9	To	

BRIDGE PLUG/CEMENT RETAINER SUMMARY

<u>Depth Set</u>
2247'

WELL PRESSURES

Tubing	0 psi
Casing	0 psi
Bradenhead	0 psi

Drake**WELL SERVICE INC.**

PO Box 538 Farmington, NM 87499 505.327.7301

P & A Daily Report

Company: Morningstar Operating

Well Name: Turner Hughes #8

API #: 30-045-06818

Date: 8/4/2022

WORK SUMMARY

Checked well pressures (see pressures below). Bled down well. Dug around wellhead and cut off wellhead. Cement was at surface in 5.5" casing, and approximately 25' below surface in 8-5/8" casing. Installed P&A marker per NMOCD regulations. Ran 3/4" poly pipe down 8-5/8" surface casing annulus to 25'. R/U cementing services. Pumped cement from approximately 25' to surface in 8-5/8" casing annulus and filled cellar. R/D cementing services. Photographed the P&A marker in place and recorded its location via GPS coordinates. R/D and MOL.

. Secured and shut in well for the day.

PLUG SUMMARY

<u>Plug No</u>		<u>Plug Depth</u>		<u>Sacks of Cement Used</u>
Plug 1	2247'	To	2041'	25 sx of Type III
Plug 2	1698'	To	1323'	47 sx of Type III
Plug 3	448'	To	337'	40 sx of Type III (20 sx into perforations)
Plug 4	177'	To	Surface	40 sx of Type III (20 sx for top off)
Plug 5		To		
Plug 6		To		
Plug 7		To		
Plug 8		To		
Plug 9		To		

BRIDGE PLUG/CEMENT RETAINER SUMMARY

<u>Depth Set</u>
2247'

WELL PRESSURES

Tubing	0 psi
Casing	0 psi
Bradenhead	0 psi

**MorningStar
Operating, LLC**

P&A WBD

**Turner Hughes #8
San Juan, NM**

Prepared by: J. Marschall
Updated by: JRyza
Date: 8/05/2022

KB = 10'
GL = 6,422'
API# 30-045-06818

Spud Date: 10/31/1955
Date Completed: 11/25/1955

TD – 2,509'; PBTD – 2,385'

Surface Csg: 3 jts 8-5/8" 24#, J-55
Setting Depth: 109'

Cement
70sx Cement
Cmt circulated

8/31/89 – Cmt Squeeze ~300'
Determine hole in casing
Pumped 135 sx cmt
Drilled out cmt from 50'-300'

Production Csg: 5-1/2" 14# & 15.5# J-55
Setting Depth: 2,450'

Cement:
100 sx cement

PLUG 4
40 sx cement 0' - 177'

PLUG 3 (inside/outside)
Perf 5 1/2" casing at 436'
40 sx cement 337' - 448'

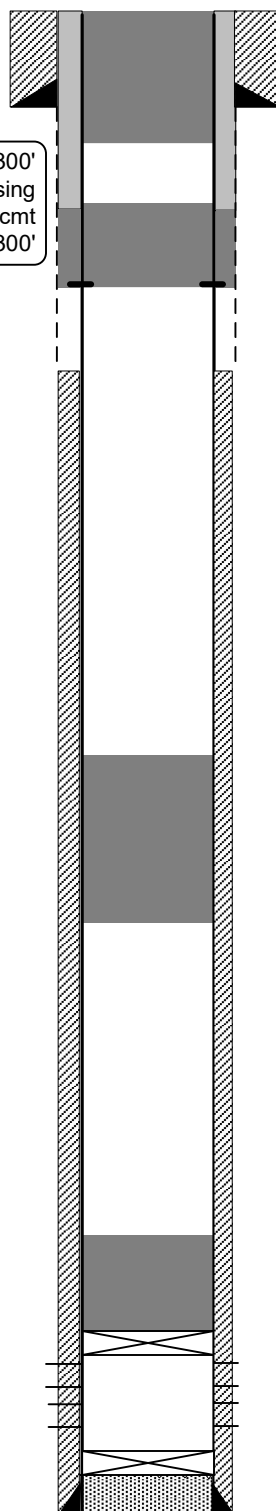
PLUG 2
47 sx cement 1,323' - 1,698'

PLUG 1
25 sx cement 2,041' - 2,247'
CICR @ 2247'

Nacimiento – surface
(originally had @386')
Ojo Alamo – 1,483'
Kirtland – 1,647'
Fruitland – 2,163'
Picture Cliffs – 2,456'

Fruitland Coal Perfs (1989)
2,299' - 2,448'

PC abandoned in 1989 with
cement retainer at 2,450' with
39 sx cement under retainer
Picture Cliffs Perfs (1955)



PBTD: 2,450'



ACOUSTIC CEMENT BOND LOG 5.5" CASING

Company	MORNINGSTAR PARTNERS, LP	Company MORNINGSTAR PARTNERS, LP Well TURNER HUGHES #8 Field BASIN FRUITLAND COAL County SAN JUAN State NM
Well	TURNER HUGHES #8	
Field	BASIN FRUITLAND COAL	
County	SAN JUAN	
State	NM	Location: API # : 30-045-06818 1500' FNL & 1020' FWL SEC 04 TWP 27N RGE 09W Permanent Datum GROUND LEVEL Elevation 6415' Log Measured From R.K.B. 7' ABOVE PERM DATUM Drilling Measured From R.K.B.
		Other Services

Date 07/26/2022

Run Number	ONE
Depth Driller	N/A
Depth Logger	2257' cmt ret
Bottom Logged Interval	2253'
Top Log Interval	SURF
Open Hole Size	N/A
Type Fluid	WATER
Density / Viscosity	N/A
Max. Recorded Temp.	N/A
Estimated Cement Top	SEE LOG
Time Well Ready	ROA
Time Logger on Bottom	SEE LOG
Equipment Number	550
Location	FARMINGTON NM
Recorded By	S. TILLEN
Witnessed By	CARLOS

Borehole Record				Tubing Record			
From Number	Bit	From	To	Size	Weight	From	To

Casing Record	Size	Mgt/Ft	Top	Bottom
Surface String	8.625	24	SURF	109'
Production String	5.5		SURF	2450'
Line				

<<< Fold Here >>>

All interpretations are opinions based on inferences from electrical or other measurements and we cannot and do not guarantee the accuracy or correctness of any interpretation, and we shall not, except in the case of gross or willful negligence on our part, be liable or responsible for any loss, costs, damages, or expenses incurred or sustained by anyone resulting from any interpretation made by any of our officers, agents or employees. These interpretations are also subject to our general terms and conditions set out in our current Price Schedule.

Comments

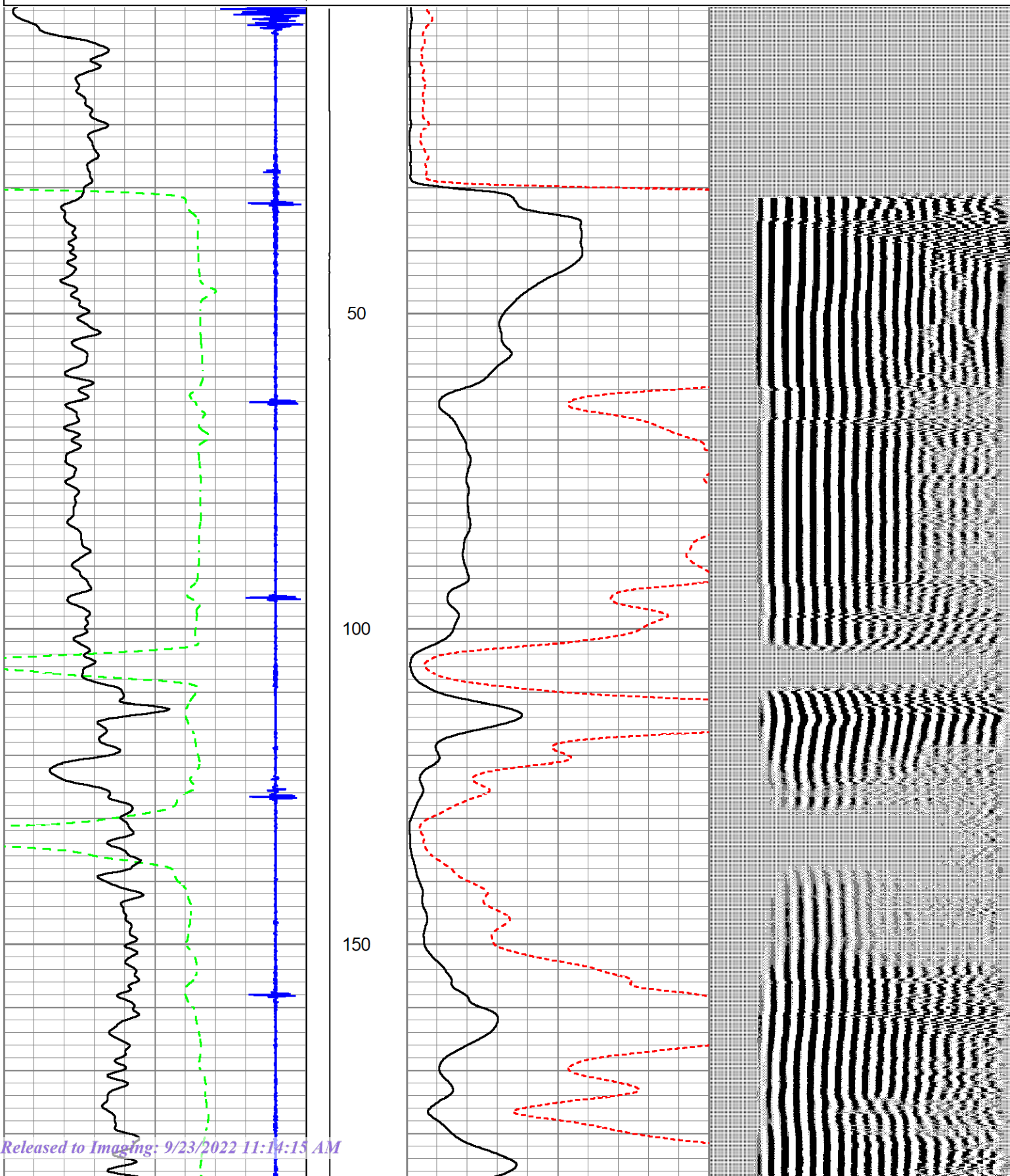
LOG WAS RAN ON WIRELINE MEASUREMENTS USING A 7' KB

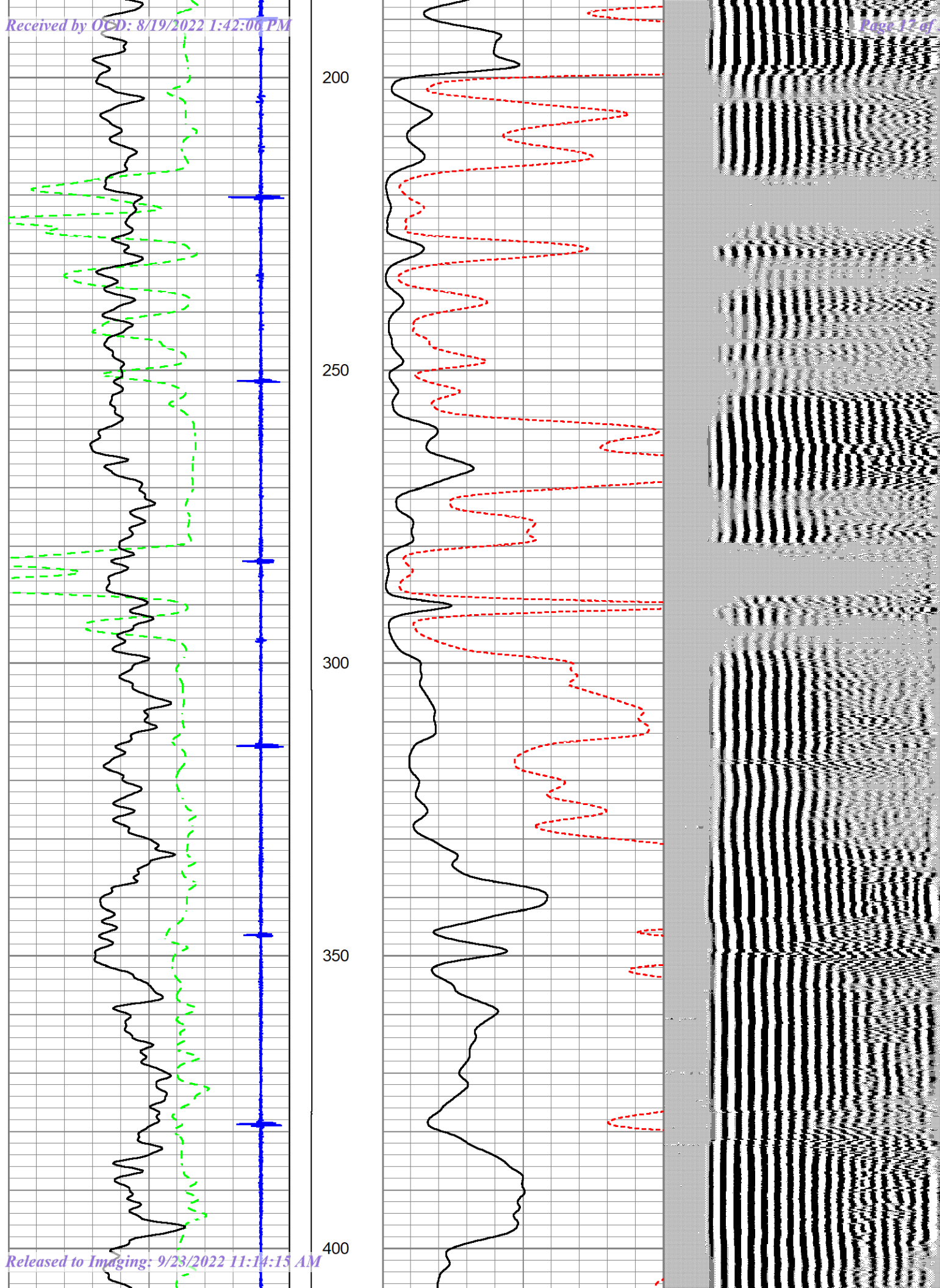


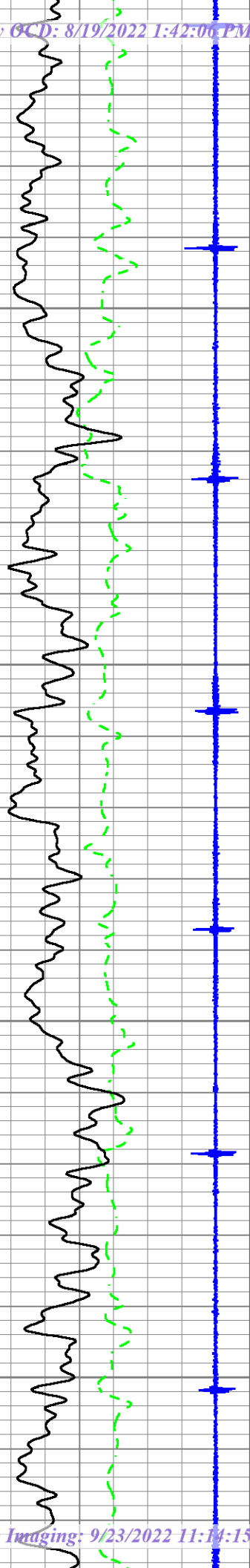
MAIN PASS

Dataset Pathname pass1.4
Presentation Format jwgsstancbl
Dataset Creation Tue Jul 26 15:59:37 2022
Charted by Depth in Feet scaled 1:240

310	TT3FT (usec)	210	LTEN	0	AMP3FT X 5 (mV)	20	200	WVF5FT (usec)	1200
36	CCL	-4	0	(lb) 500	0	AMP3FT (mV)	100		
0	GR	200							





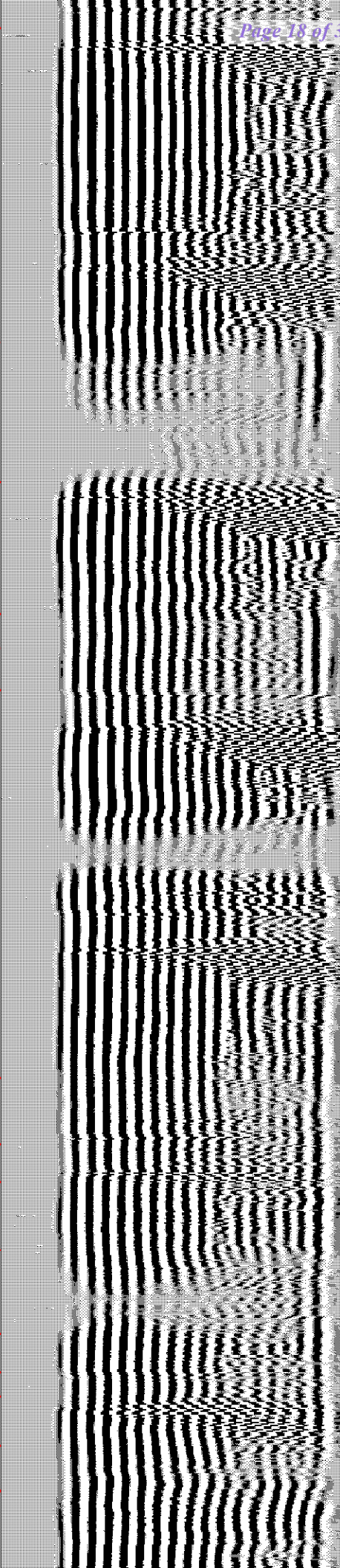
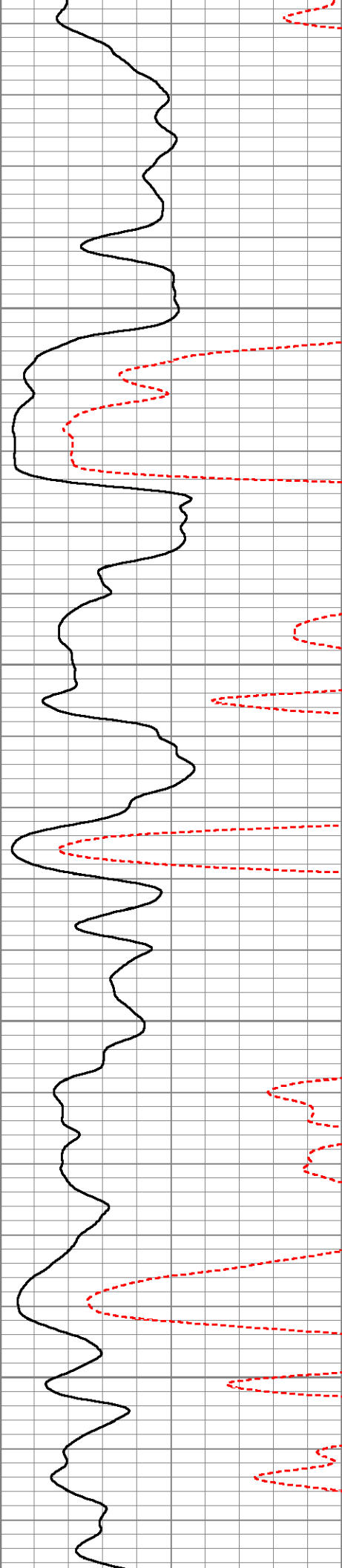


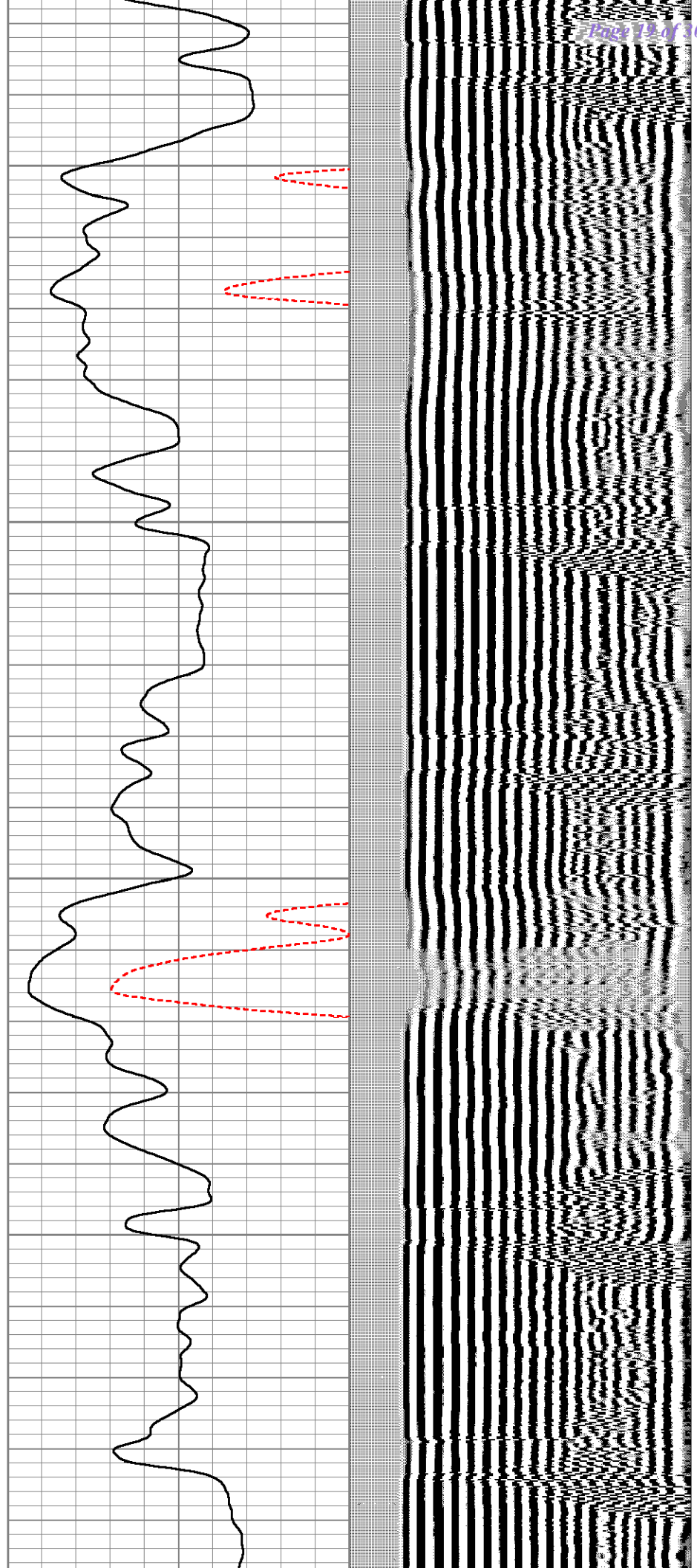
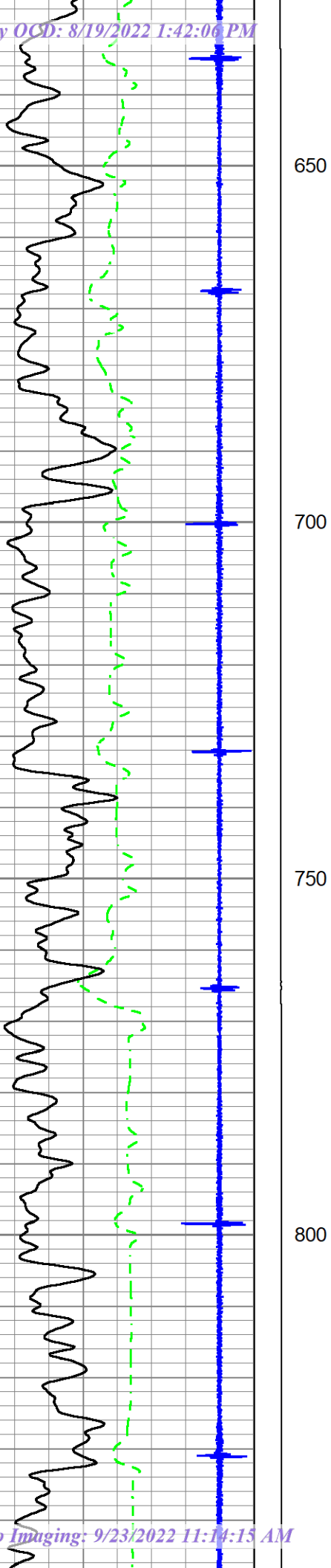
450

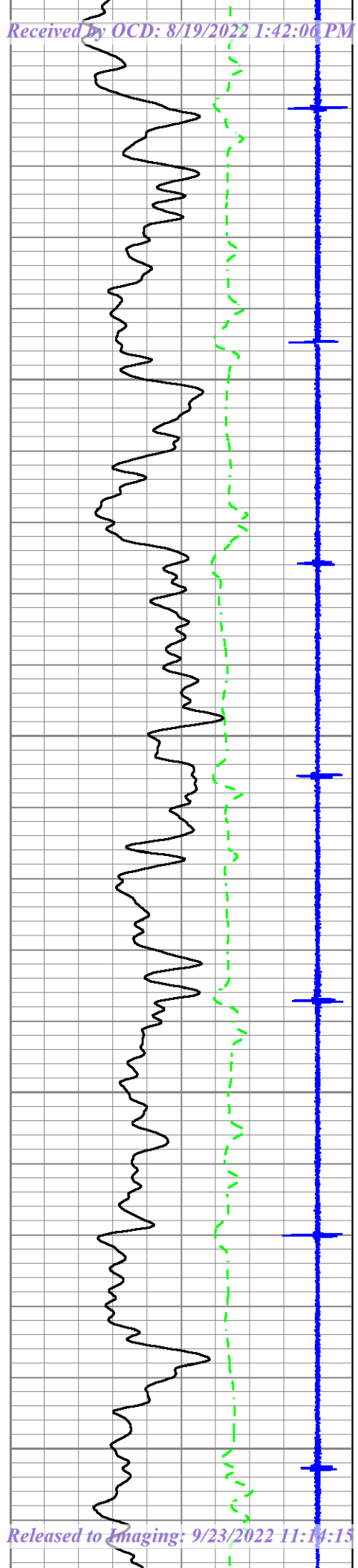
500

550

600







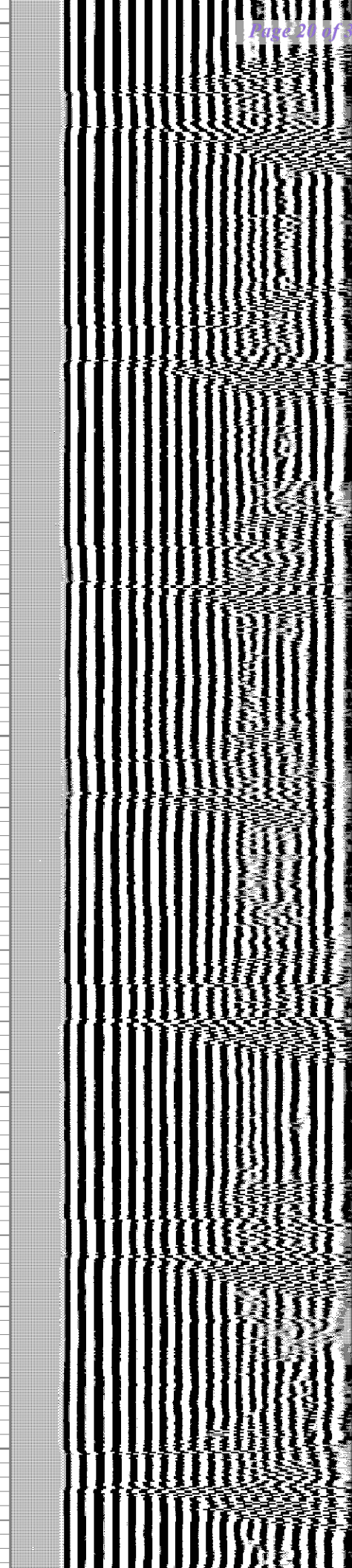
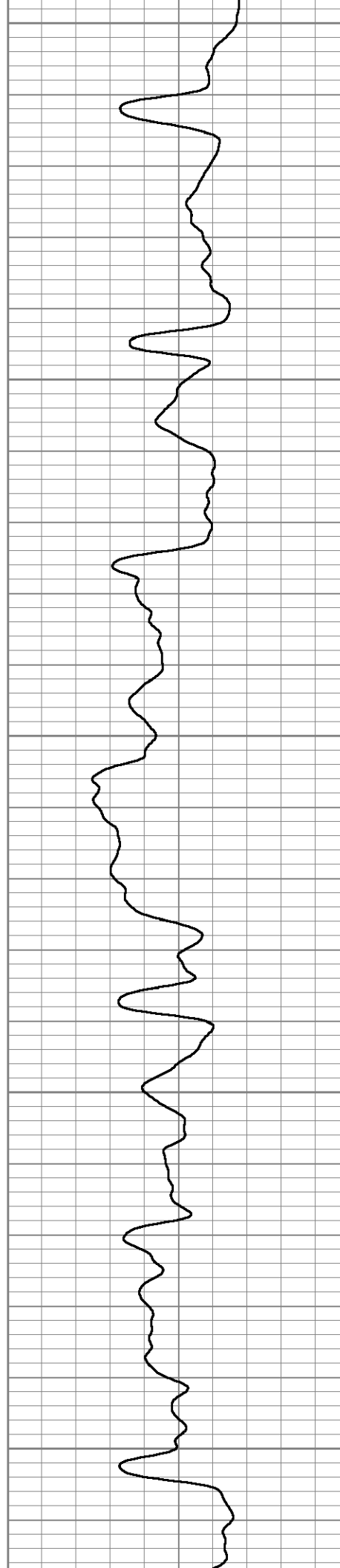
850

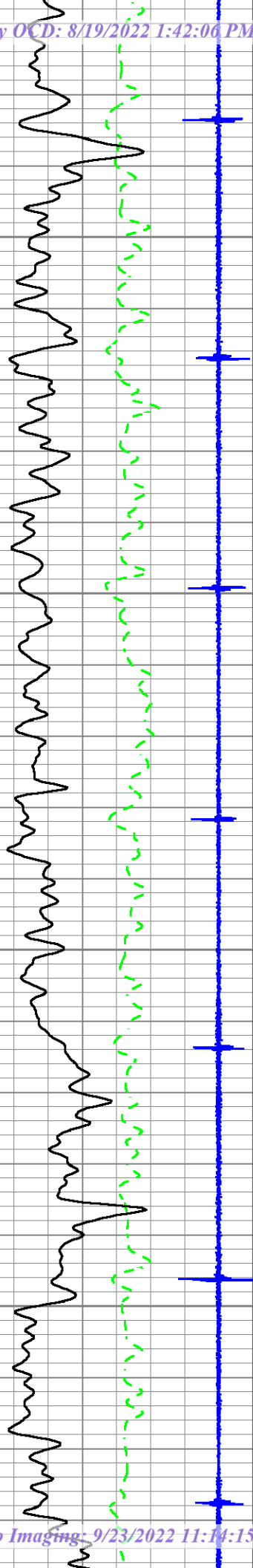
900

950

1000

1050



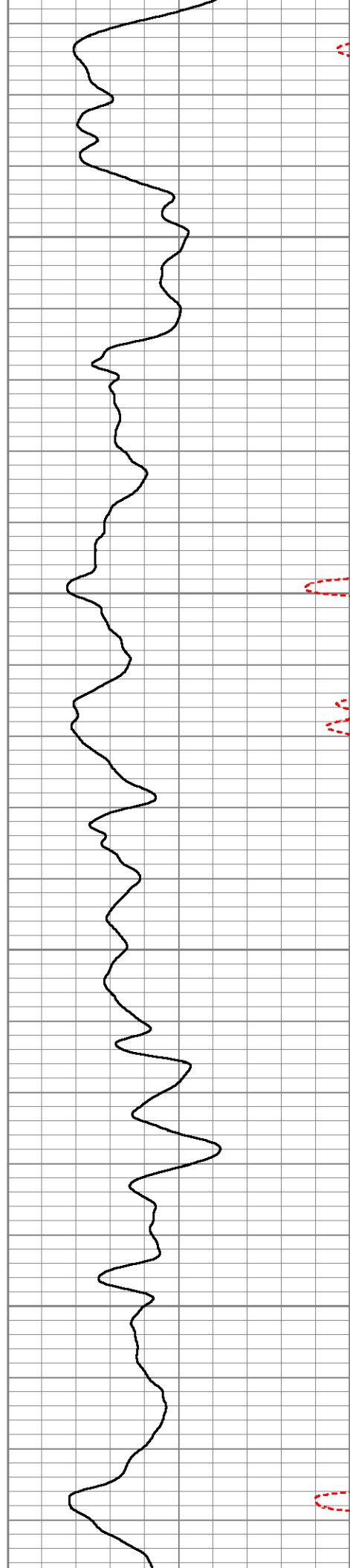


1100

1150

1200

1250



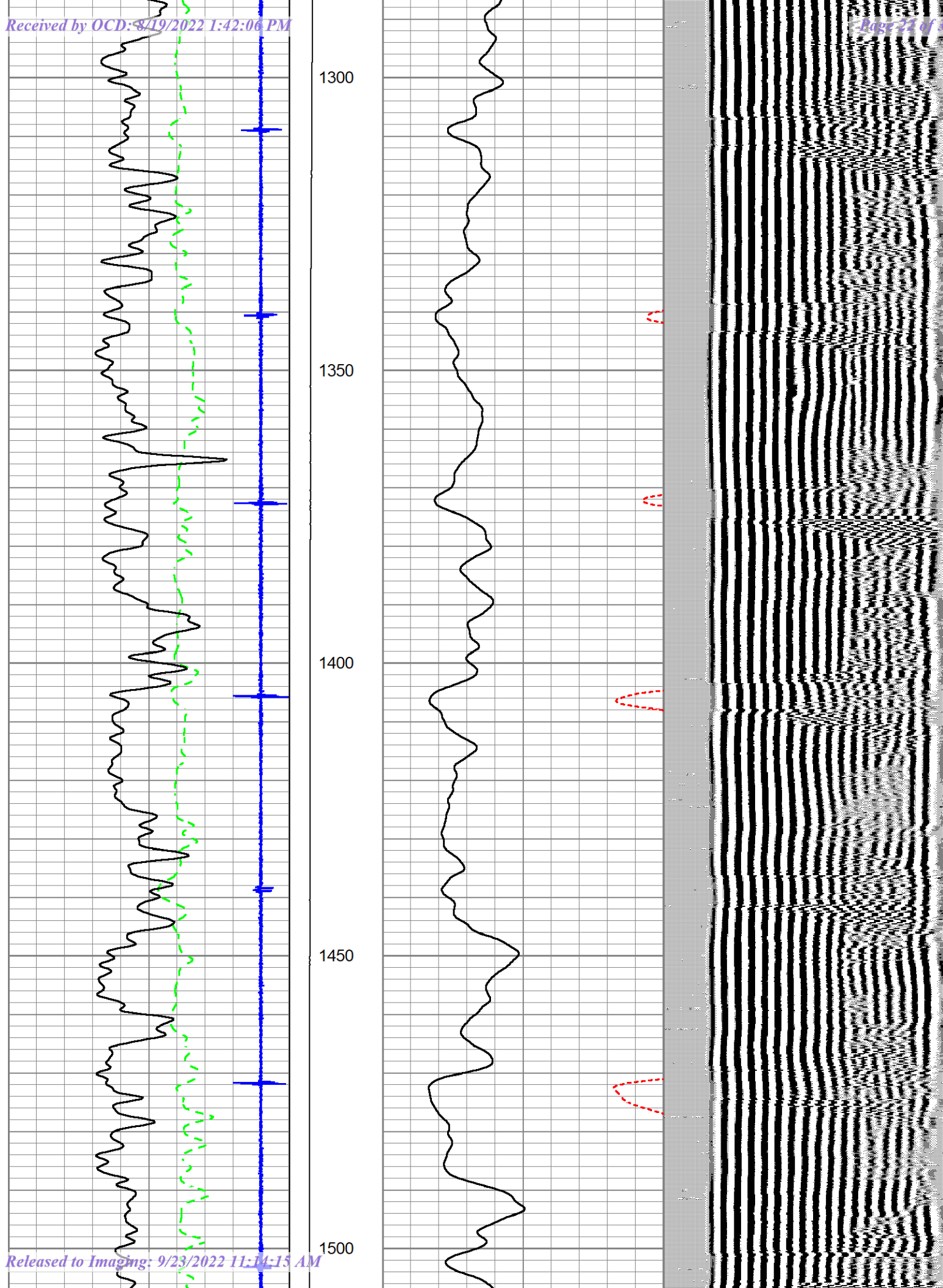
1100

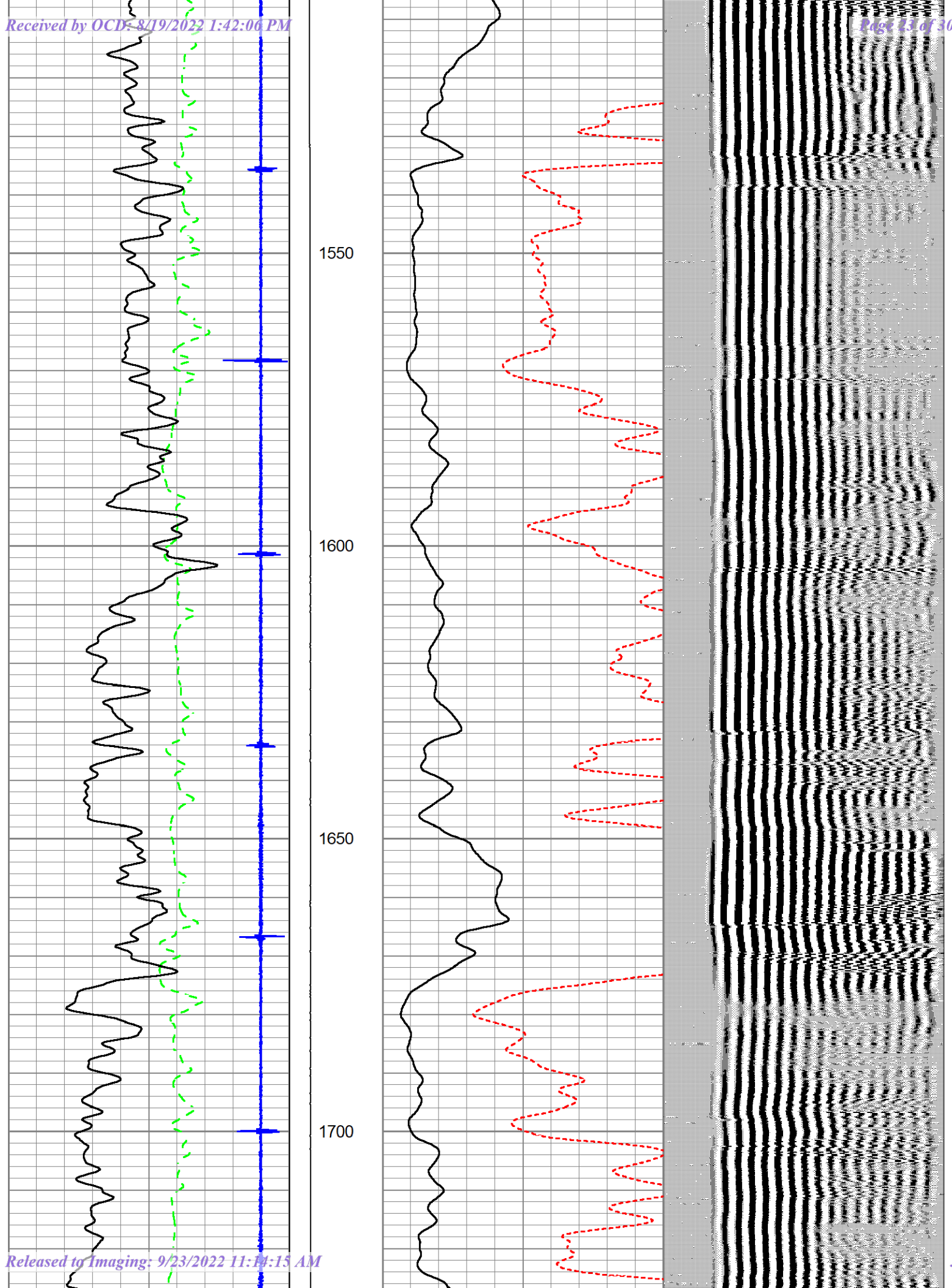
1150

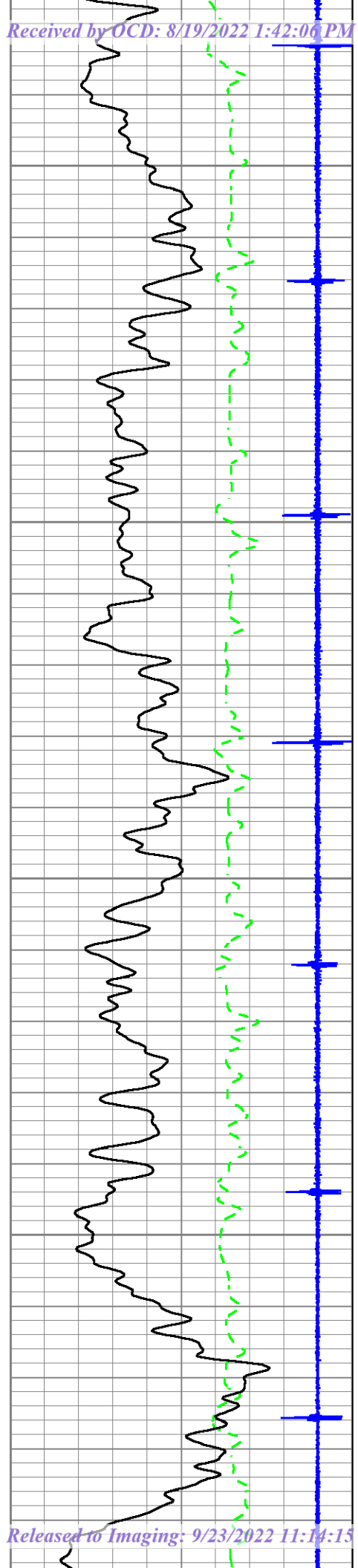
1200

1250







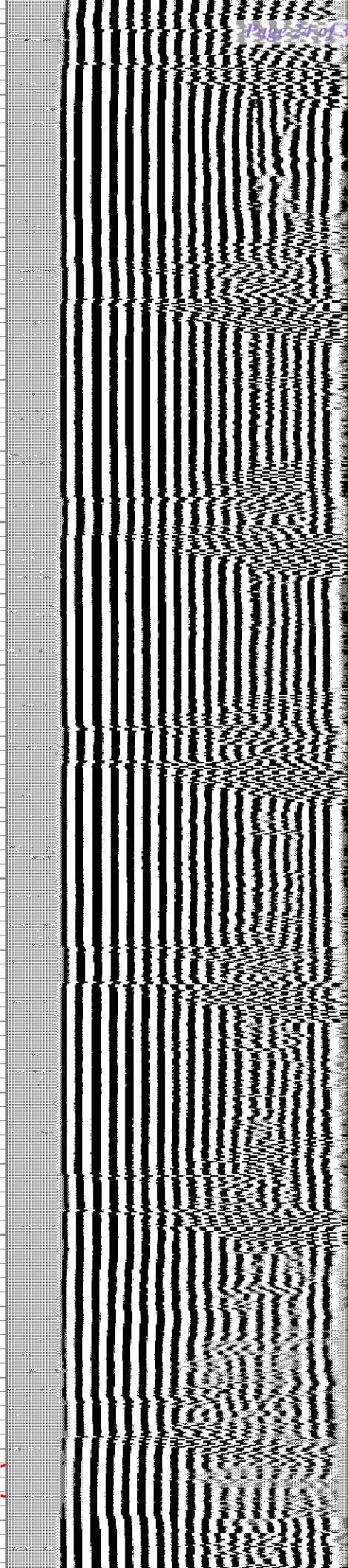
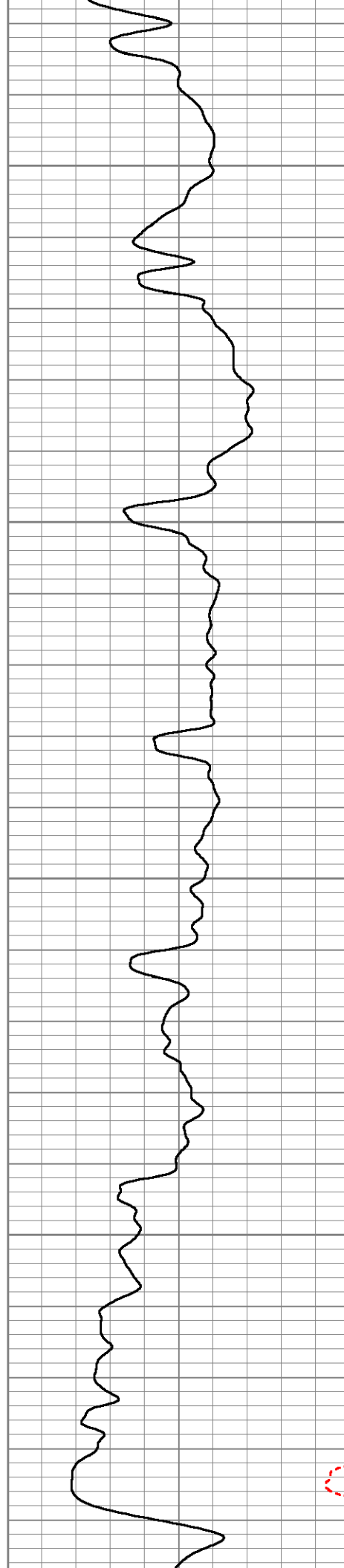


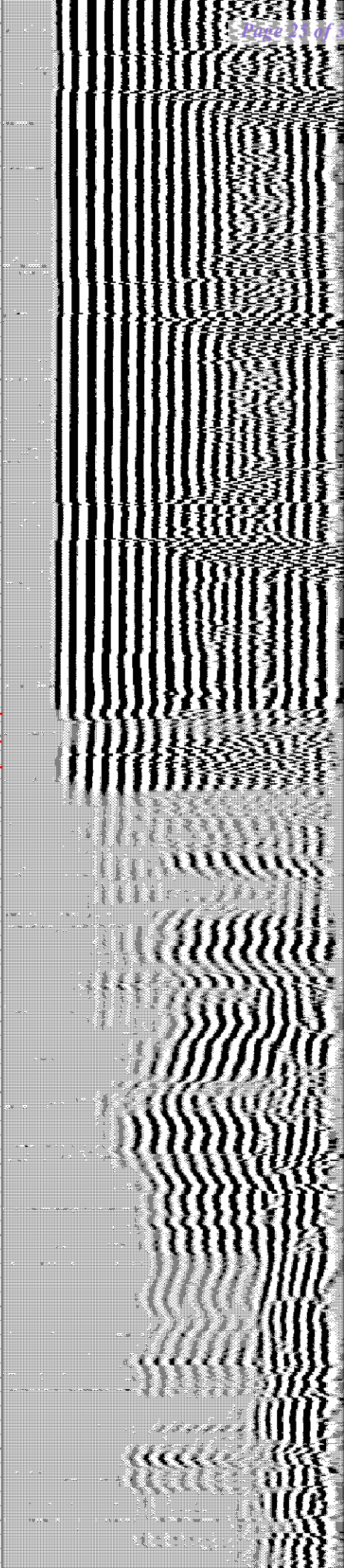
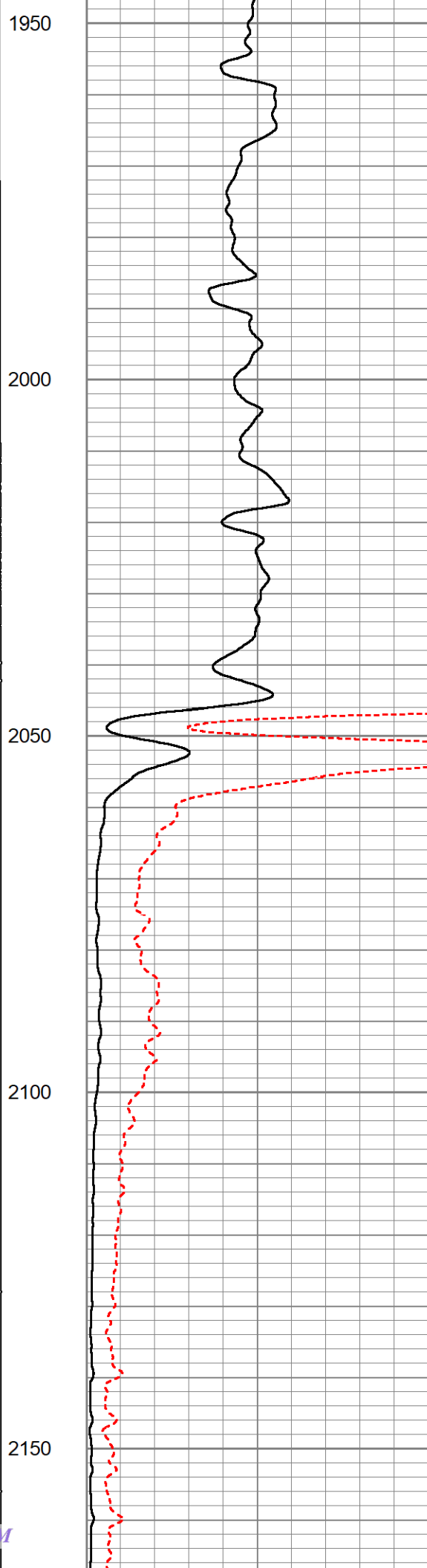
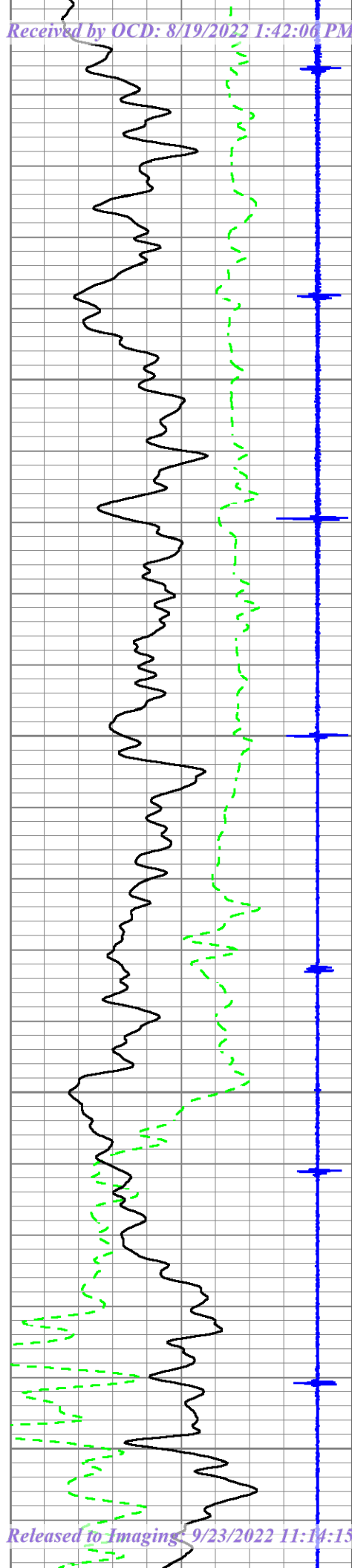
1750

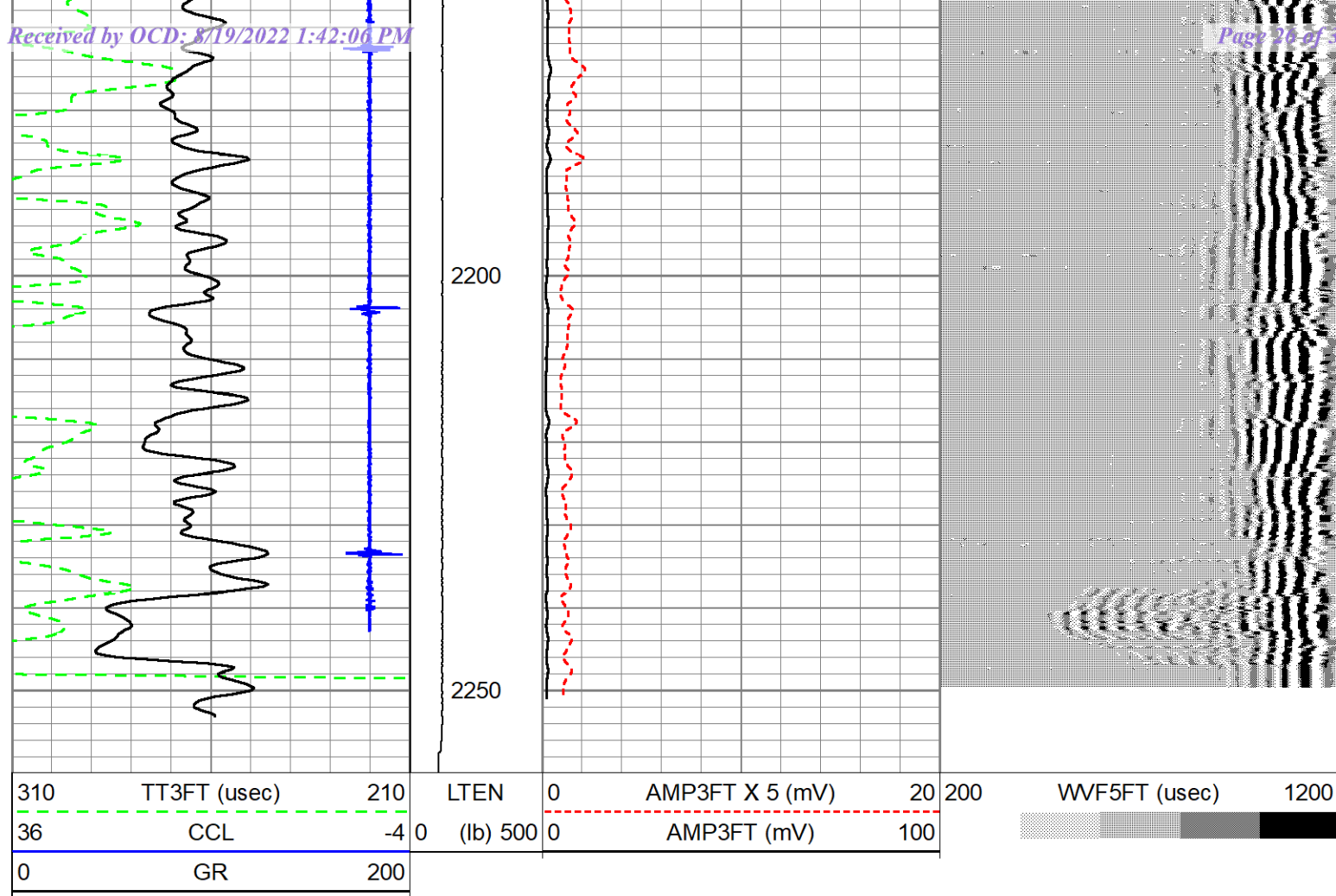
1800

1850

1900





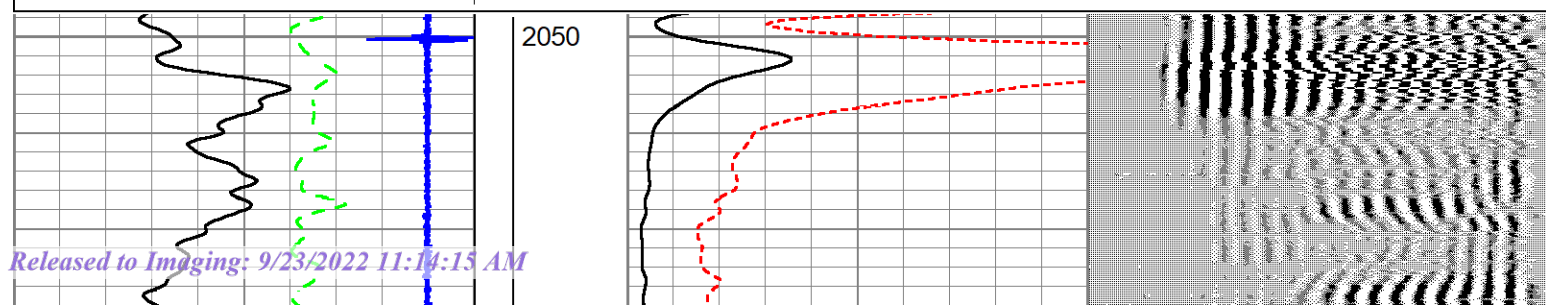
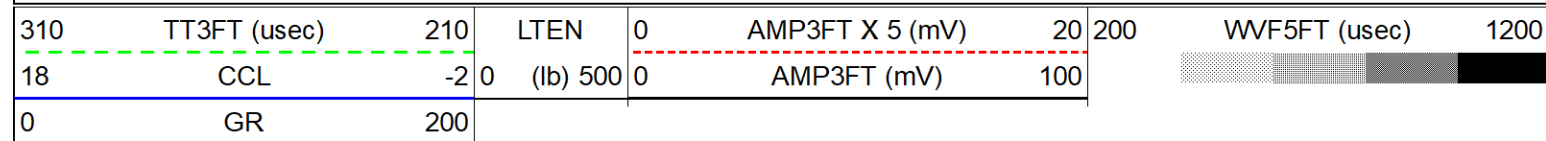


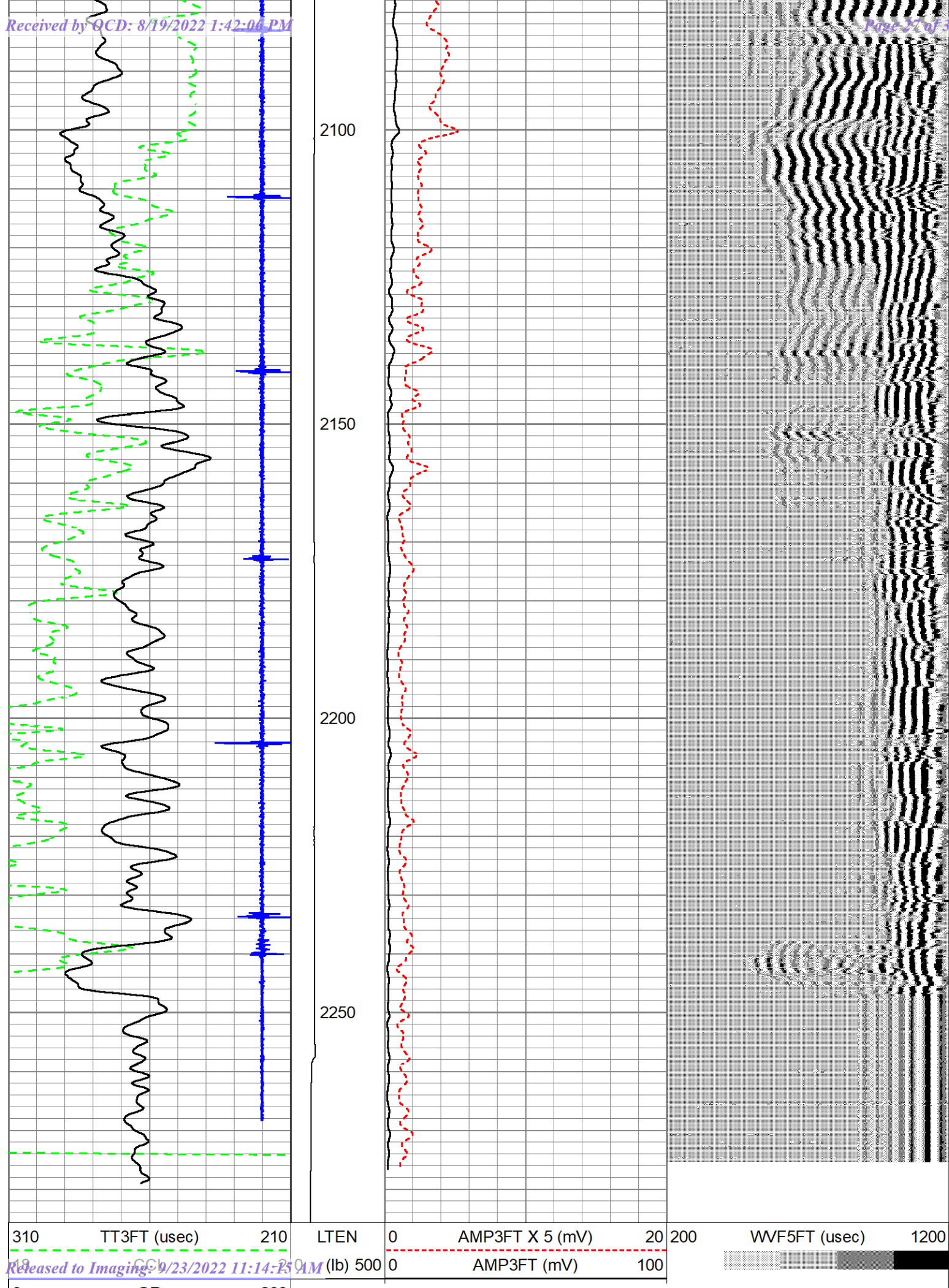
MAIN PASS



REPEAT PASS

Database File: drakehughes8.db
 Dataset Pathname: pass1.3
 Presentation Format: jwgsstancbl
 Dataset Creation: Tue Jul 26 15:50:33 2022
 Charted by: Depth in Feet scaled 1:240







REPEAT PASS

Sensor	Offset (ft)	Schematic	Description	Length (ft)	O.D. (in)	Weight (lb)
			CENT-TTN2.75	3.00	2.75	5.00
CCL	17.02		CCL-Titan (TTN_2) 2.75 TTN CCL	2.15	2.75	20.00
TEMP	13.40					
WVFS8	12.10		275CTEKSECWTWSLCANS-275RIB (1234) 2 3/4" (R.I.B.) TOOL 3FT, 5FT and 8EA RIB SIGNALS 400 DEG "F" @20K PSI With Sliding Cans For Pressure Ballance	9.13	2.75	102.00
WVFS7	12.10					
WVFS6	12.10					
WVFS5	12.10					
WVFS4	12.10					
WVFS3	12.10					
WVFS2	12.10					
WVFS1	12.10					
WVFSYNC	11.35					
WVFCAL	11.35					
WVF3FT	11.35					
WVF5FT	10.35					
WVFTEMP	7.02					
GR	4.44		GR-Titan (TTN_2) 275" TTN GR	4.02	2.75	77.00
			CENT-TTN2.75	3.00	2.75	5.00

Dataset:	drakehughes8.db: field/well/run1/pass1.4
Total length:	21.29 ft
Total weight:	209.00 lb
O.D.:	2.75 in

District I
1625 N. French Dr., Hobbs, NM 88240
Phone:(575) 393-6161 Fax:(575) 393-0720
District II
811 S. First St., Artesia, NM 88210
Phone:(575) 748-1283 Fax:(575) 748-9720
District III
1000 Rio Brazos Rd., Aztec, NM 87410
Phone:(505) 334-6178 Fax:(505) 334-6170
District IV
1220 S. St Francis Dr., Santa Fe, NM 87505
Phone:(505) 476-3470 Fax:(505) 476-3462

State of New Mexico
Energy, Minerals and Natural Resources
Oil Conservation Division
1220 S. St Francis Dr.
Santa Fe, NM 87505

CONDITIONS

Action 135991

CONDITIONS

Operator: MorningStar Operating LLC 400 W 7th St Fort Worth, TX 76102	OGRID: 330132
	Action Number: 135991
	Action Type: [C-103] Sub. Plugging (C-103P)

CONDITIONS

Created By	Condition	Condition Date
mkuehling	Well plugged 8/4/22	9/23/2022
mkuehling	CBL needs to be submitted separately	9/23/2022