

Office
 District I – (575) 393-6161
 1625 N. French Dr., Hobbs, NM 88240
 District II – (575) 748-1283
 811 S. First St., Artesia, NM 88210
 District III – (505) 334-6178
 1000 Rio Brazos Rd., Aztec, NM 87410
 District IV – (505) 476-3460
 1220 S. St. Francis Dr., Santa Fe, NM
 87505

State of New Mexico
 Energy, Minerals and Natural Resources

Form C-103
 Revised July 18, 2013

OIL CONSERVATION DIVISION
 1220 South St. Francis Dr.
 Santa Fe, NM 87505

WELL API NO. 30-045-08122
5. Indicate Type of Lease STATE <input type="checkbox"/> FEE <input checked="" type="checkbox"/>
6. State Oil & Gas Lease No.
7. Lease Name or Unit Agreement Name Payne A
8. Well Number 1
9. OGRID Number 372171
10. Pool name or Wildcat Basin Dakota
11. Elevation (Show whether DR, RKB, RT, GR, etc.) 5515'

SUNDRY NOTICES AND REPORTS ON WELLS
 (DO NOT USE THIS FORM FOR PROPOSALS TO DRILL OR TO DEEPEN OR PLUG BACK TO A DIFFERENT RESERVOIR. USE "APPLICATION FOR PERMIT" (FORM C-101) FOR SUCH PROPOSALS.)

1. Type of Well: Oil Well ☐ Gas Well ☒ Other

2. Name of Operator
 HILCORP ENERGY COMPANY

3. Address of Operator
 382 Road 3100, Aztec, NM 87410

4. Well Location
 Unit Letter C : 890 feet from the North line and 1850 feet from the West line
 Section 19 Township 29N Range 10W NMPM County San Juan

12. Check Appropriate Box to Indicate Nature of Notice, Report or Other Data

NOTICE OF INTENTION TO:

PERFORM REMEDIAL WORK ☐ PLUG AND ABANDON ☒
 TEMPORARILY ABANDON ☐ CHANGE PLANS ☐
 PULL OR ALTER CASING ☐ MULTIPLE COMPL ☐
 DOWNHOLE COMMINGLE ☐
 CLOSED-LOOP SYSTEM ☐
 OTHER: ☐

SUBSEQUENT REPORT OF:

REMEDIAL WORK ☐ ALTERING CASING ☐
 COMMENCE DRILLING OPNS. ☐ P AND A ☐
 CASING/CEMENT JOB ☐
 OTHER: ☐

13. Describe proposed or completed operations. (Clearly state all pertinent details, and give pertinent dates, including estimated date of starting any proposed work). SEE RULE 19.15.7.14 NMAC. For Multiple Completions: Attach wellbore diagram of proposed completion or recompletion.

Hilcorp Energy Company requests permission to P&A the subject well per the attached procedures, current and proposed wellbore schematics. A closed loop system will be used.

Spud Date:

Rig Release Date:

I hereby certify that the information above is true and complete to the best of my knowledge and belief.

SIGNATURE  TITLE Operations/Regulatory Technician – Sr. DATE 9/19/2022

Type or print name Amanda Walker E-mail address: mwalker@hilcorp.com PHONE: (346) 237-217

For State Use Only

APPROVED BY:  TITLE Petroleum Specialist DATE 09/23/2022

Conditions of Approval (if any):



HILCORP ENERGY COMPANY
PAYNE A #1
NOTICE OF INTENT TO PERMANENTLY ABANDON

API #:

3004508122

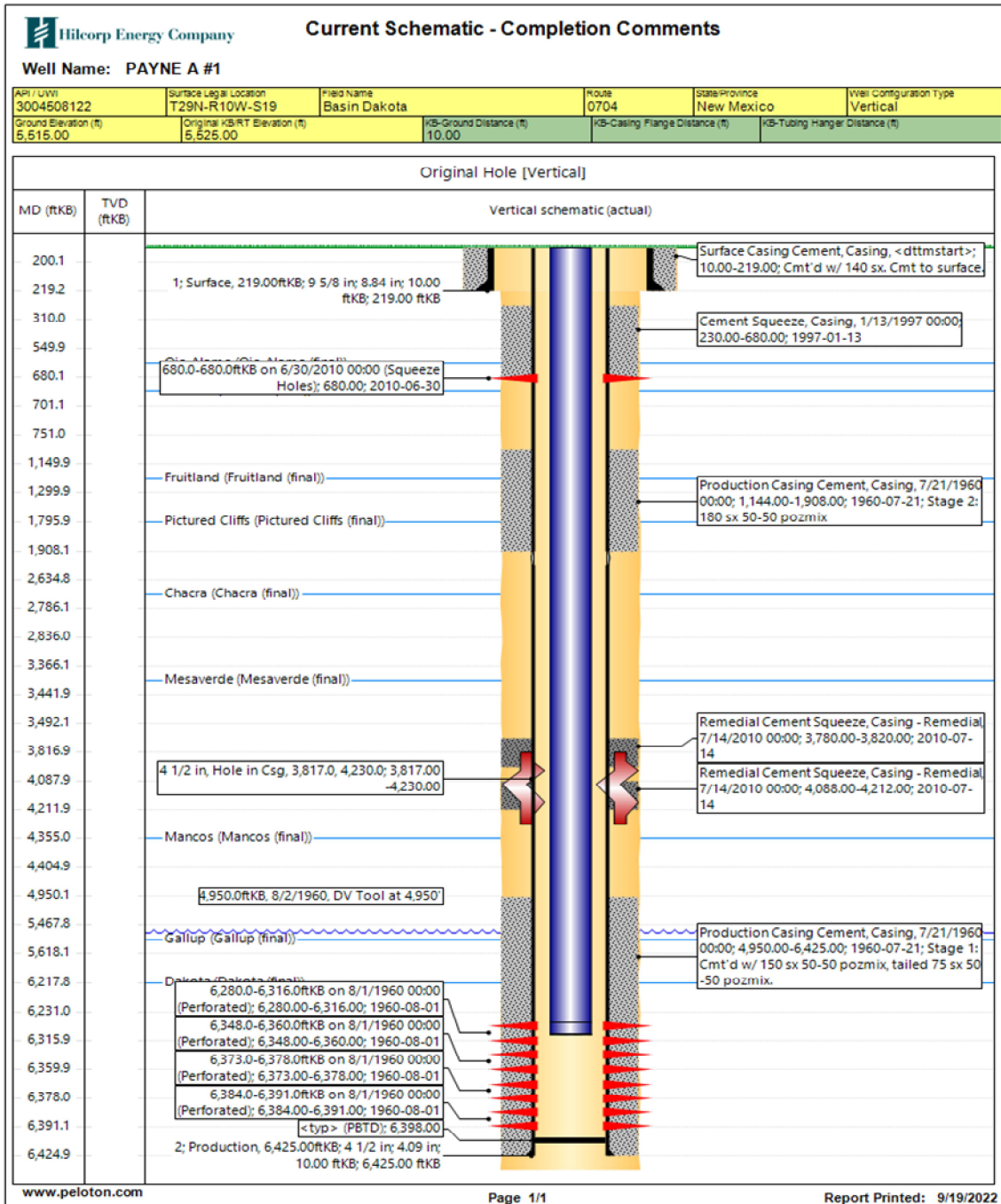
JOB PROCEDURES

- | | | |
|-------------------------------------|-------|--|
| <input checked="" type="checkbox"/> | NMOCD | Contact OCD and BLM (where applicable) 24 hrs prior to MIRU. Comply with all NMOCD, BLM (where applicable), and HEC safety and environmental regulations. |
| <input checked="" type="checkbox"/> | BLM | |
1. MIRU service rig and associated equipment, record all pressures on wellbore.
 2. Load well, ND tree, NU BOPs and test.
 3. TOOH w/ 2-3/8" 4.7# EUE J55 tbg set at 6,302'.
 4. MU 4-1/2" 9.5# csg scraper, clear csg to 6,250', POOH.
 5. MU 4-1/2" 9.5# CIBP and set @ 6,230' (DK Top Perf @ 6,280').
 6. Load well with inhibited brine & circulate clean. Pressure test the csg to 560 psi. Monitor for 30 minutes.
 7. **Plug #1 | 6,080' - 6,230' (CIBP @ 6,230' | Dakota Perforations: 6,280' - 6,391')** Pump 12sx of Class G cement and spot an inside plug over CIBP @ 6,230'.
 8. **Plug #2 | 5,468' - 5,618' (Gallup Top @ 5,568')** Pump 12sx of Class G cement and spot an inside plug to cover the Gallup Top.
 9. RU ELU, perf circ holes in the 4-1/2" csg @ 4,405'. Set CICR @ 4,355'.
Plug #3 | 4,205' - 4,405' (Mancos Top @ 4,355') Pump 56sx of Class G cement and spot an inside/outside plug to cover the Mancos Top.
 10. RU ELU, perf circ holes in the 4-1/2" csg @ 3,491'. Set CICR @ 3,441'.
Plug #4 | 3,291' - 3,491' (Cliff House Top @ 3,441') Pump 56sx of Class G cement and spot an inside/outside plug to cover the Cliff House Top.
 11. RU ELU, perf circ holes in the 4-1/2" csg @ 2,835'. Set CICR @ 2,785'.
Plug #5 | 2,635' - 2,835' (Chacra Top @ 2,785') Mix and pump 56sx of Class G cement and spot an inside/outside plug to cover the Chacra Top.
 12. **Plug #6 | 1,696' - 1,846' (Pictured Cliffs Top @ 1,796')** Pump 12sx of Class G cement and spot an inside plug to cover the Pictured Cliffs Top.
 13. **Plug #7 | 1,150' - 1,300' (Fruitland Top @ 1,250')** Pump 12sx of Class G cement and spot an inside plug to cover the Fruitland Top.
 14. RU ELU, perf circ holes in the 4-1/2" csg @ 750'. Set CICR @ 700'.
Plug #8 | 490' - 750' (Ojo Top @ 590' | Kirtland Top @ 700') Pump 61 SX of Class G cement and spot an inside/outside plug to cover the Ojo & Kirtland Tops. Squeeze 40sx below retainer, spot 21sx above retainer.
 15. RU ELU, perf circ holes in the 4-1/2" csg @ 200'. CBL from 2010 shows probable bond up to 230'.
Plug #9 | 10' - 200' (Surface Shoe @ 219') Pump 71sx of Class G cement and spot an inside/outside plug to cover the surface shoe from 200' to surface.
 16. LD tubing. ND BOP and cut off wellhead below surface casing flange as per NMOCD. Top off cement at surface as needed. Weld new P&A maker.



HILCORP ENERGY COMPANY
PAYNE A #1
NOTICE OF INTENT TO PERMANENTLY ABANDON

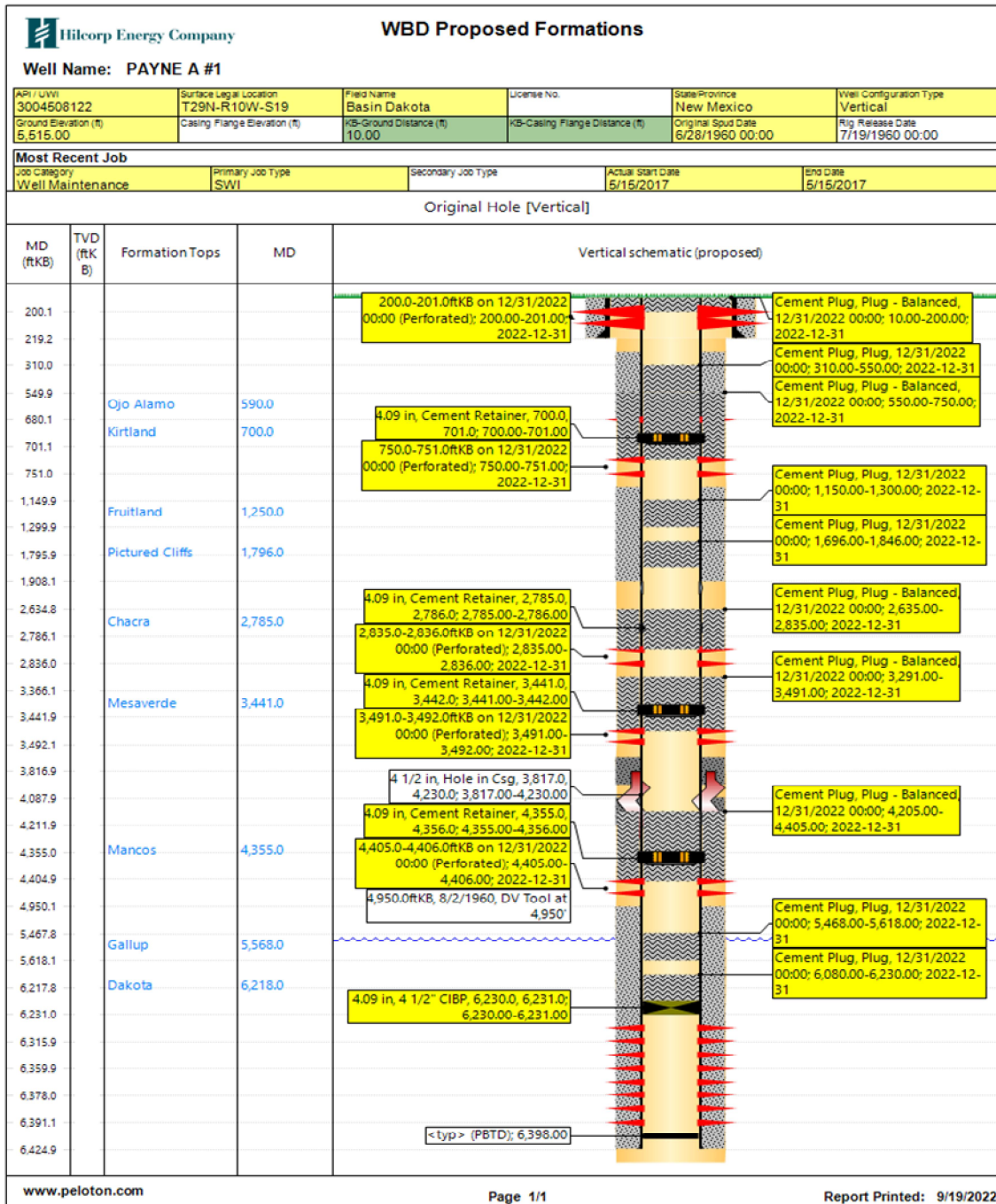
PAYNE A #1 - CURRENT WELLBORE SCHEMATIC





HILCORP ENERGY COMPANY
PAYNE A #1
NOTICE OF INTENT TO PERMANENTLY ABANDON

PAYNE A #1 - PROPOSED P&A SCHEMATIC



District I

1625 N. French Dr., Hobbs, NM 88240
Phone:(575) 393-6161 Fax:(575) 393-0720

District II

811 S. First St., Artesia, NM 88210
Phone:(575) 748-1283 Fax:(575) 748-9720

District III

1000 Rio Brazos Rd., Aztec, NM 87410
Phone:(505) 334-6178 Fax:(505) 334-6170

District IV

1220 S. St Francis Dr., Santa Fe, NM 87505
Phone:(505) 476-3470 Fax:(505) 476-3462

State of New Mexico
Energy, Minerals and Natural Resources
Oil Conservation Division
1220 S. St Francis Dr.
Santa Fe, NM 87505

CONDITIONS

Action 144536

CONDITIONS

Operator: HILCORP ENERGY COMPANY 1111 Travis Street Houston, TX 77002	OGRID: 372171
	Action Number: 144536
	Action Type: [C-103] NOI Plug & Abandon (C-103F)

CONDITIONS

Created By	Condition	Condition Date
kpickford	Notify NMOCD 24 Hours Prior to beginning operations	9/23/2022
kpickford	Adjust plug #2 5380-5280 to cover the Gallup top @ 5330.	9/23/2022
kpickford	Adjust plug #3 to 4550-4450 to cover the Mancos top @ 4500.	9/23/2022
kpickford	Adjust plug #7 to 490-770 to cover the Kirtland top @ 720.	9/23/2022
kpickford	Extend plug #9 to 269 to cover the surface casing shoe at 219.	9/23/2022