

Office
 District I – (575) 393-6161
 1625 N. French Dr., Hobbs, NM 88240
 District II – (575) 748-1283
 811 S. First St., Artesia, NM 88210
 District III – (505) 334-6178
 1000 Rio Brazos Rd., Aztec, NM 87410
 District IV – (505) 476-3460
 1220 S. St. Francis Dr., Santa Fe, NM
 87505

State of New Mexico
 Energy, Minerals and Natural Resources

Form C-103
 Revised July 18, 2013

OIL CONSERVATION DIVISION
 1220 South St. Francis Dr.
 Santa Fe, NM 87505

WELL API NO. 30-045-29421
5. Indicate Type of Lease STATE <input checked="" type="checkbox"/> FEE <input type="checkbox"/>
6. State Oil & Gas Lease No. OG1683
7. Lease Name or Unit Agreement Name Golden Bear
8. Well Number 3
9. OGRID Number 372171
10. Pool name or Wildcat Kutz Pictured Cliffs
11. Elevation (Show whether DR, RKB, RT, GR, etc.) 5489' GL

SUNDRY NOTICES AND REPORTS ON WELLS
 (DO NOT USE THIS FORM FOR PROPOSALS TO DRILL OR TO DEEPEN OR PLUG BACK TO A DIFFERENT RESERVOIR. USE "APPLICATION FOR PERMIT" (FORM C-101) FOR SUCH PROPOSALS.)

1. Type of Well: Oil Well ☐ Gas Well ☒ Other

2. Name of Operator
HILCORP ENERGY COMPANY

3. Address of Operator
382 Road 3100, Aztec, NM 87410

4. Well Location

Unit Letter B : 813' feet from the NORTH line and 1501' feet from the EAST line
 Section 02 Township 29N Range 13W NMPM County San Juan

12. Check Appropriate Box to Indicate Nature of Notice, Report or Other Data

NOTICE OF INTENTION TO:

PERFORM REMEDIAL WORK ☐ PLUG AND ABANDON ☐
 TEMPORARILY ABANDON ☐ CHANGE PLANS ☐
 PULL OR ALTER CASING ☐ MULTIPLE COMPL ☐
 DOWNHOLE COMMINGLE ☐
 CLOSED-LOOP SYSTEM ☐
 OTHER: ☐

SUBSEQUENT REPORT OF:

REMEDIAL WORK ☐ ALTERING CASING ☐
 COMMENCE DRILLING OPNS. ☐ P AND A ☒
 CASING/CEMENT JOB ☐
 OTHER: ☐

13. Describe proposed or completed operations. (Clearly state all pertinent details, and give pertinent dates, including estimated date of starting any proposed work). SEE RULE 19.15.7.14 NMAC. For Multiple Completions: Attach wellbore diagram of proposed completion or recompletion.

This well was P&A'd on 3/23/2022.

Please see the attached P&A procedure.

Spud Date:

Rig Release Date:

I hereby certify that the information above is true and complete to the best of my knowledge and belief.

SIGNATURE Amanda Walker TITLE Operations/Regulatory Technician – Sr. DATE 04/05/2022

Type or print name Amanda Walker E-mail address: mwalker@hilcorp.com PHONE: (346) 237-2177

For State Use Only

APPROVED BY: Monica Kuehling TITLE Deputy Oil and Gas Inspector DATE 9/23/22

Conditions of Approval (if any):

Golden Bear #3
30-045-29421
Lease # OG1683
P&A SR

3/17/2022: MIRU. CK WELL PRESSURES (SITP: 10 PSI, SICP: 10 PSI, SIBHP: 0 PSI). POOH & LD ROD STRING. ND WH. NU BOPE. POOH SCANNING & TBG STRING. RD TUBOSCOPE. SDFN.

TROUBLE CALL: As per NMOCD we will be pumping 50' below retainer for PC plug #1. NMOCD has called Fruitland formation TOP at 1095'. After a discussion w/ Monica and pending a good csg pressure test, we will be combining PC #1 and Fruitland #2 (Plugs) placing 4 sxs below retainer and 31 sks on top of retainer making plug extend from 1434' to 984'. Thomas Vermersch w/ NMOCD is on location to witness pressure test and plugs; If there any questions or concerns please contact me at your earliest convenience.

3/18/2022: CK WELL PRESSURES (SITP: N/A PSI, SICP: 0 PSI, SIBHP: 0 PSI). PU 4 1/2" CSG SCRAPER. PU & TALLY 44 JTS OF 2 3/8" WORK STRING TO 1410'. POOH LD SCRAPER. PU 4 1/2" CMT RETAINER. RIH & SET RETAINER @ 1380'. PT TBG. TST GOOD. PT CSG. TST FAILED LOSING 200 PSI IN 30 SECS. MIX & PMP **PLUG 1** W/4 SKS BELOW RETAINER & 16 SKS ABV F/1484' T/1175' W/TOTAL OF 20 SKS CLASS G NEAT CMT. PMP 4.09 BBL SLURRY @ 1.15 YIELD & 15.9 PPG. DISPLACE CMT PLUG W/4.1 BBLs. LD 6 JTS. WOC 4 HRS. TIH & TAG TOC PLUG 1 @ 145' BELOW SET DEPTH. WELL DRANK DWN TO 1325'. LD 8 JTS TO 1151'. MIX & PMP **PLUG 2 (FRUITLAND COAL)** W/25 SKS CLASS G NEAT CMT F/1151' T/830'. PMP 5.12 BBL SLURRY @ 1.15 YIELD & 15.9 PPG. DISPLACE CMT PLUG W/2.5 BBLs. LD 11 JTS. WILL WOC PLUG OVERNIGHT. SDFWE

TROUBLE CALL: Plug #1 fell as anticipated 145'. Tagged TOC at 1325' which cleared the approved depth by 5'. Loaded and re-pressure test csg. Test failed dropping slower this time at 200 psi in 1.5 min. As long as everyone is in agreement we will pump plug #2 with an additional 100' of cement as well, extending plug from 1145' to 895'.

TROUBLE CALL: This morning on the Golden Bear #3, we tagged TOC Plug #2 at 853'. Pressure tested csg to 500 psi, Test failed dropping same psi (200 psi 1.5 min) With 0 psi on BH and as approved by NMOCD we will proceed with Surface Plug f/ 200' to surface, WOC 4 hrs and tag. Will move forward based on results.

3/21/2022: CK WELL PRESSURES (SITP: N/A PSI, SICP: 0 PSI, SIBHP: 0 PSI). TIH & TAG TOC PLUG 2 @ 23' BELOW SET DEPTH. WELL DRANK DWN TO 853'. LD 20 JTS TO 214'. PT CSG TO 500 PSI. TST FAILED DROPPING 200 PSI IN 1 MIN. CONTACTED HEC & NMOCD & RECEIVED APPROVAL TO PROCEED W/SURF PLUG. MIX & PMP **PLUG 3** (SURFACE PLUG) W/36 SKS CLASS G NEAT CMT F/200' T/SURFACE. PMP 9.6 BBL SLURRY @ 1.15 YIELD & 15.9 PPG. CIRC GOOD CMT TO SURF. LD 6 TBG JTS PULLING OOH. WOC PLUG FOR 4 HRS. TIH TO TAG TOC PLUG 3 @ 23'. PU 3 JTS & GREEN CMT. BEGAN DISPLACING UP TBG PRESSURE TST CSG TO 500 PSI, TST FAILED, DROPPING 200 PSI IN 1 MIN. CONTACTED HEC & NMOCD. RECEIVED APPROVAL TO CONT TO WOC. SDFN.

3/22/2022: CK WELL PRESSURES (SITP: N/A PSI, SICP: 0 PSI, SIBHP: 0 PSI). TIH & TAG TOC PLUG 3 @ 48'. PT CSG TO 500 PSI. TST FAILED DROPPING 200 PSI IN 1 MIN. CONTACTED HEC & NMOCD. RECEIVED APPROVAL TO PROCEED W/THE RE-PMP OF SURFACE PLUG. MIX & PMP **PLUG 3B** (SURF) W/12 SKS CLASS G NEAT CMT F/48' T/SURF. PMP 2.45 BBL SLURRY @ 1.15 YIELD & 16.1 PPG W/2% CALC. CIRC CMT TO SURFACE. LD 2 TBG POOH. ND BOP. NU WH. TOP CMT PLUG & SIW W/800 PSI. WOC PLUG FOR 4 HRS. OPEN WELL & FOUND CMT TO SURF WAS STILL GREEN. CONTACTED HEC REPS & NMOCD. RECEIVED DIRECTION TO CONTINUE WOC. SDFN.

3/23/2022: CK WELL PRESSURES (SITP: N/A PSI, SICP: 0 PSI, SIBHP: 0 PSI). OPEN WELL. CMT SOLID TO SURF. DIG WH. RU WELDER. CUT OFF WH. WELD ON DRY HOLE MARKER. MIX & TOP OFF CELLAR W/31 SKS CLASS G NEAT CMT 1.15 YIELD & TOTALING 6.34 BBL SLURRY. RDRR @ 09:00 HRS.

****NMOCD REP THOMAS VERMERSCH ON LOCATION TO WITNESS OPERATIONS. ALL PMP PLUGS WERE APPROVED AND WITNESSED BY NMOCD****



Schematic - Current

Well Name: **GOLDEN BEAR #3**

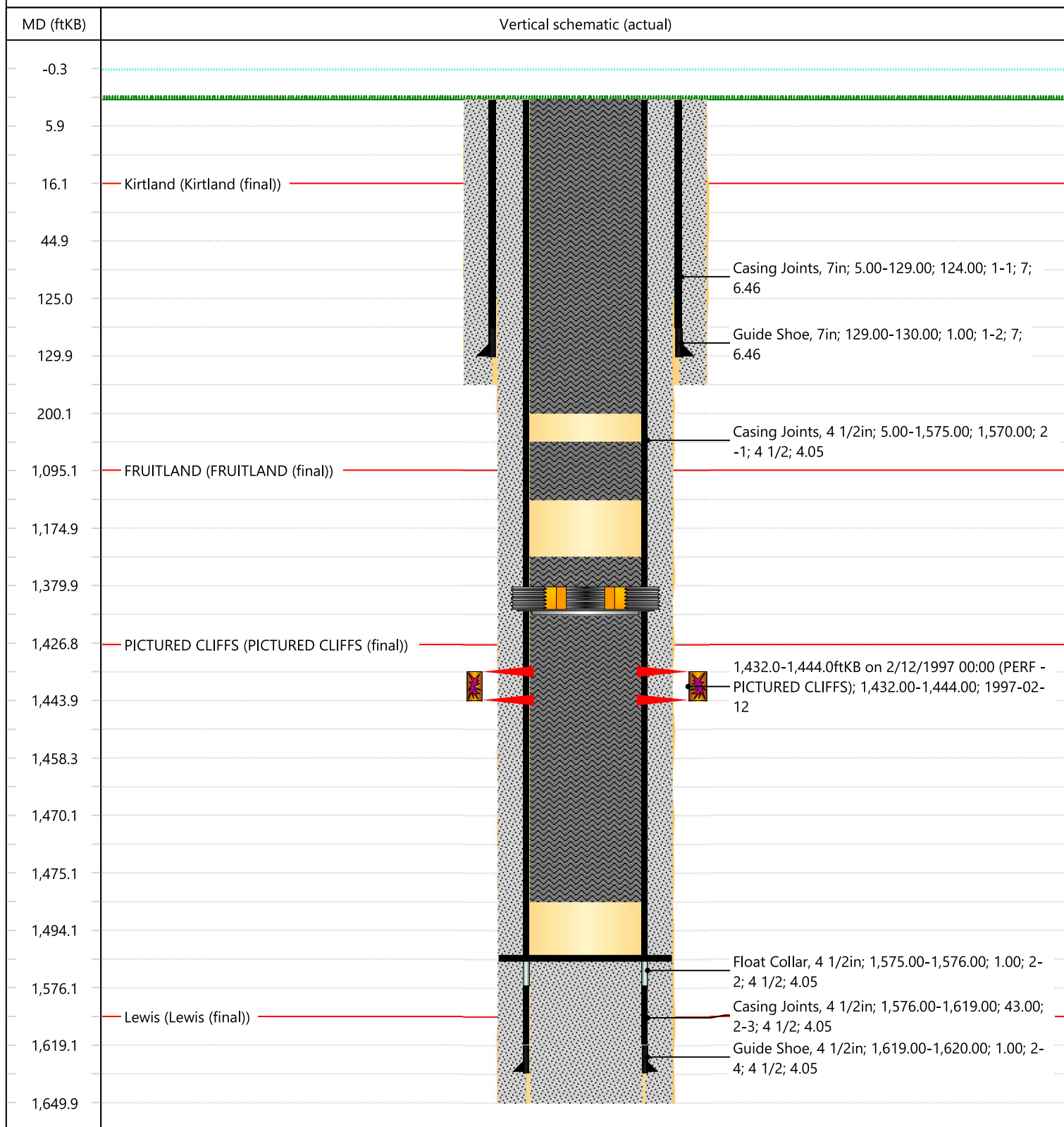
API / UWI 3004529421	Surface Legal Location T29N-R13W-S02	Field Name Fulcher Kutz PC	License No.	State/Province New Mexico	Well Configuration Type Vertical
Original KB/RT Elevation (ft) 5,531.00	KB-Ground Distance (ft) 5.00	Original Spud Date 1/30/1997 00:00	Rig Release Date 2/5/1997 00:00	PBTD (All) (ftKB) Original Hole - 1,575.0	Total Depth All (TVD) (ftKB)

Most Recent Job

Job Category Expense Plug & Abandon	Primary Job Type ABANDONMENT P&A	Secondary Job Type	Actual Start Date 3/17/2022	End Date 3/23/2022
--	-------------------------------------	--------------------	--------------------------------	-----------------------

TD: **1,650.0**

Original Hole [Vertical]



District I
1625 N. French Dr., Hobbs, NM 88240
Phone:(575) 393-6161 Fax:(575) 393-0720
District II
811 S. First St., Artesia, NM 88210
Phone:(575) 748-1283 Fax:(575) 748-9720
District III
1000 Rio Brazos Rd., Aztec, NM 87410
Phone:(505) 334-6178 Fax:(505) 334-6170
District IV
1220 S. St Francis Dr., Santa Fe, NM 87505
Phone:(505) 476-3470 Fax:(505) 476-3462

State of New Mexico
Energy, Minerals and Natural Resources
Oil Conservation Division
1220 S. St Francis Dr.
Santa Fe, NM 87505

CONDITIONS

Action 96050

CONDITIONS

Operator: HILCORP ENERGY COMPANY 1111 Travis Street Houston, TX 77002	OGRID: 372171
	Action Number: 96050
	Action Type: [C-103] Sub. Plugging (C-103P)

CONDITIONS

Created By	Condition	Condition Date
mkuehling	Well plugged 3/23/22	9/23/2022