

Office
 District I – (575) 393-6161
 1625 N. French Dr., Hobbs, NM 88240
 District II – (575) 748-1283
 811 S. First St., Artesia, NM 88210
 District III – (505) 334-6178
 1000 Rio Brazos Rd., Aztec, NM 87410
 District IV – (505) 476-3460
 1220 S. St. Francis Dr., Santa Fe, NM
 87505

State of New Mexico
 Energy, Minerals and Natural Resources

Form C-103
 Revised July 18, 2013

OIL CONSERVATION DIVISION
 1220 South St. Francis Dr.
 Santa Fe, NM 87505

WELL API NO. 30-025-31085	
5. Indicate Type of Lease STATE <input checked="" type="checkbox"/> FEE <input type="checkbox"/>	
6. State Oil & Gas Lease No.	
7. Lease Name or Unit Agreement Name Lovington Paddock Unit	
8. Well Number	97
9. OGRID Number 241333	
10. Pool name or Wildcat [40660] Lovington, Paddock	
4. Well Location Unit Letter <u>P</u> : <u>1325</u> feet from the <u>SOUTH</u> line and <u>1228</u> feet from the <u>EAST</u> line Section <u>36</u> Township <u>16S</u> Range <u>36E</u> NMPM County <u>LEA</u>	
11. Elevation (Show whether DR, RKB, RT, GR, etc.)	

SUNDRY NOTICES AND REPORTS ON WELLS

(DO NOT USE THIS FORM FOR PROPOSALS TO DRILL OR TO DEEPEN OR PLUG BACK TO A DIFFERENT RESERVOIR. USE "APPLICATION FOR PERMIT" (FORM C-101) FOR SUCH PROPOSALS.)

1. Type of Well: Oil Well ☒ Gas Well ☐ Other ☐

2. Name of Operator
CHEVRON MIDCONTINENT, L.P.

3. Address of Operator
6301 Deauville BLVD, Midland TX 79706

12. Check Appropriate Box to Indicate Nature of Notice, Report or Other Data

NOTICE OF INTENTION TO:

PERFORM REMEDIAL WORK ☐ PLUG AND ABANDON ☐
 TEMPORARILY ABANDON ☐ CHANGE PLANS ☐
 PULL OR ALTER CASING ☐ MULTIPLE COMPL ☐
 DOWNHOLE COMMINGLE ☐
 CLOSED-LOOP SYSTEM ☐
 OTHER: ☐

SUBSEQUENT REPORT OF:

REMEDIAL WORK ☐ ALTERING CASING ☐
 COMMENCE DRILLING OPNS. ☐ P AND A ☒
 CASING/CEMENT JOB ☐
 OTHER: ☐

13. Describe proposed or completed operations. (Clearly state all pertinent details, and give pertinent dates, including estimated date of starting any proposed work). SEE RULE 19.15.7.14 NMAC. For Multiple Completions: Attach wellbore diagram of proposed completion or recompletion.

Spot 26 sacks Class C cement from 5914 ft to 5658 ft
 Spot 26 sacks Class C cement from 4524 ft to 4268 ft
 Spot 26 sacks Class C cement from 3867 ft to 3611 ft
 Spot 26 sacks Class C cement from 2099 ft to 1843 ft
 Spot 26 sacks Class C cement from 250 ft to 0 ft

Cement to surface in all strings

Approved for plugging of well bore only. Liability under bond is retained pending Location cleanup & receipt of C-103Q (Subsequent Report of Well Plugging) which may be found at OCD Web Page, OCD Permitting @ www.emnrd.state.nm.us

Spud Date:

Rig Release Date:

I hereby certify that the information above is true and complete to the best of my knowledge and belief.

SIGNATURE Hayes Thibodeaux TITLE Engineer DATE 9/15/2022

Type or print name Hayes Thibodeaux E-mail address: Hayes.Thibodeaux@chevron.com PHONE: 281-726-9683

For State Use Only

APPROVED BY: Accepted for record – NMOCD gc 10/6/2022 DATE

Conditions of Approval (if any):



Summary Report

Abandon
Abandon Well - Permanent
Job Start Date: 8/12/2022
Job End Date:

Well Name LOVINGTON PADDOCK UNIT 097		Lease Lovington Paddock Unit	Field Name Lovington	Business Unit EMC	
Ground Elevation (ft) 3,822.00	Original RKB (ft) 3,833.00	Current RKB Elevation		Mud Line Elevation (ft)	Water Depth (ft)

Report Start Date: 8/12/2022

Com

Review JSA and SIF.

Checked pressures, hand dug risers, installed new risers, hot bolted head, graded location and shut down.

Report Start Date: 9/1/2022

Com

Moved WSU, float and half frac. Spotted in rig.

Report Start Date: 9/2/2022

Com

Reviewed JSA with crew.

Rigged up WSU and cement pump.

Checked pressure's and bled down both strings. Continued to flow would not bleed down completely.

Attempt to kill well pumped 20 down tbg 50 down casing. Shut in and attempt to BHD no success well continued flowing.

Secured well and safety debrief.

Report Start Date: 9/6/2022

Com

Reviewed JSA with crew.

Offload and rig up rod handling equipment.

Checked pressure's and bled down both strings continued to flow.

Pumped 10 bbls 14.5# down tbg and 16 down casing went on slight vacuum.

Laid down polish rod and installed rod BOP.

Rigged up workfloor.

Worked stuck pump unable to release pulled up to 35K max pull on 1" FG. Backed off rods and parted at first rod below surface.

Crew break for lunch.

Rigged down workfloor.

Unloaded and function tested BOPE. N/D WH.

Nippled up BOPE.

Rigged up workfloor.

Pressure test BOP 250 low 1000 high.

Spot in racks and slide. Unloaded workstring from haul truck.

Secured well and safety debrief.

Report Start Date: 9/7/2022

Com

Reviewed JSA with crew.

Checked pressure's 0 psi all strings.

Loaded well.

Stripped rods and tbg out of hole laid down 21-1" FG and 23 jts 2 7/8" to free rods.

Waited on rod equipment lay down rig was using and only have 1 set.

Laid down 64-1" FG, 110-7/8" and 9 sinker bars. Rods were parted at shear tool did not recover pump.

Secured well and safety debrief.

Report Start Date: 9/8/2022

Com

Reviewed JSA with crew.

Checked pressure's 0 psi all strings. Loaded hole with brine.

Laid down 169 jts 2 7/8". On jt # 131 tbg got hung up in tight spot assumed TAC sheared. POH found safety collar parted from TAC. Leaving rod pump, TAC, 7 bare jts, 2 enduralloy jts, SN and mud anchor.

Crew break for lunch.

Rehead rope sopcket.

Rigged up lubricator.

RIH with guage ring to 6000'.

* Discussed results with engineer and Kerry Fortner with NMOCD. Recieved approval to leave junk in hole and move CIBP up to 5914' 100' above perfs.

RIH with 5 1/2" CIBP set at 5914'.

Rigged down wireline and sent to lay down rig.

Cleaned up setting tool.

Secured well and safety debrief.

Report Start Date: 9/9/2022

Com

Reviewed JSA with crew.

Checked pressure's 0 psi all strings. Surface passed bubble test.

Rig repairs.

Picked up 101 jts 2 3/8".

Crew break for lunch.



Summary Report

Abandon
Abandon Well - Permanent
Job Start Date: 8/12/2022
Job End Date:

Well Name LOVINGTON PADDOCK UNIT 097		Lease Lovington Paddock Unit	Field Name Lovington	Business Unit EMC	
Ground Elevation (ft) 3,822.00	Original RKB (ft) 3,833.00	Current RKB Elevation		Mud Line Elevation (ft)	Water Depth (ft)

Com

Picked up additional 87 jts tagged CIBP at 5914' with 188 jts.

Circulate mudout of hole with 40 bbls brine.

Pressure test casing 1000 psi 15 min.

Spot 110 bbls MLF.

Spot 26 sx class C f/ 5914' t/ 5658' displaced with 21.5 bbls.

Laid down 44 jts left 144 in at 4524'.

Spot 26 sx class C f/ 4524' t/ 4268' displaced with 16.5 bbls.

* Required tag by NMOCD.

Laid down 8 jts racked 52 jts left 84 in at 2635'.

Secured well and safety debrief.

Report Start Date: 9/13/2022

Com

Reviewed JSA with crew.

Checked pressure's 0 psi all strings. Bubble tested all strings tested good 0 gas readings.

TIH with 52 jts tagged cement at 4254'.

* Updated OCD no other tags required.

Laid down 13 jts left 123 in hole at 3867'.

Spot 26 sx class C f/ 3867' t/ 3611' displaced with 13.5 bbls.

Laid down 57 jts left 66 in at 2099'.

Spot 26 sx class C f/ 2099' t/ 1843' displaced with 7 bbls.

Laid down 58 jts left 8 in hole at 250'.

Spot 26 sx class C f/ 250' t/ surface.

Laid down 8 jts and topped off cement.

Washed up pump and equipment.

Crew break for lunch.

Rigged down workfloor.

Nippled down BOPE.

Nippled up well head.

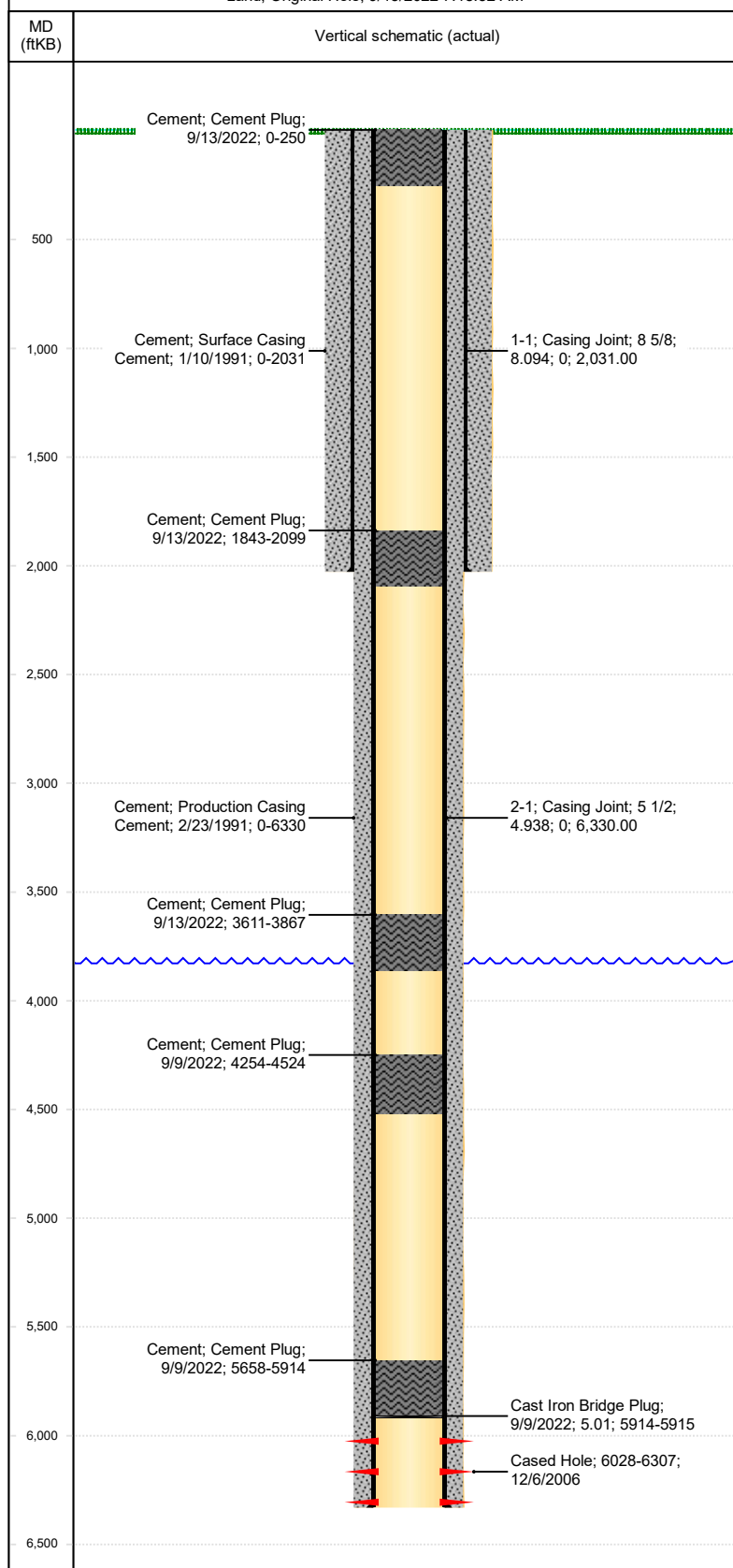
Rigged down WSU and cement equipment.



Abandonment Schematic

Well Name LOVINGTON PADDOCK UNIT 097		Lease Lovington Paddock Unit		Field Name Lovington		Business Unit EMC	
State/Province New Mexico		County/ Parish Lea		Surface UWI 3002531085		Surface ChevNo OM2016	
Current RKB Elevation	Original RKB Elevation (ft) 3,833.00	Ground Elevation (ft) 3,822.00		Current KB to Ground (ft)	Current KB to Csg Flange (ft)	Current KB to Tubing Head (ft)	

Land, Original Hole, 9/15/2022 7:18:52 AM



HUD & Other in Hole

Top (ftKB)	Des	OD (in)
5,914.0	Cast Iron Bridge Plug	5.012

Cement Fluids

Description	Btm (ftKB)	Top Depth (ftKB)	Class	Quantity (sacks)
Cement Plug	5,914.0	5,658.0	C	26
Cement Plug	4,524.0	4,268.0	C	26
Cement Plug	3,867.0	3,611.0	C	26
Cement Plug	2,099.0	1,843.0	C	26
Cement Plug	250.0	0.0	C	26

Perforations

Top (ftKB)	Btm (ftKB)	Zone Name	Job	String Perforated
6,028.0	6,307.0		SBU Data Integrity, 12/6/2006 00:00	

District I
1625 N. French Dr., Hobbs, NM 88240
Phone:(575) 393-6161 Fax:(575) 393-0720
District II
811 S. First St., Artesia, NM 88210
Phone:(575) 748-1283 Fax:(575) 748-9720
District III
1000 Rio Brazos Rd., Aztec, NM 87410
Phone:(505) 334-6178 Fax:(505) 334-6170
District IV
1220 S. St Francis Dr., Santa Fe, NM 87505
Phone:(505) 476-3470 Fax:(505) 476-3462

State of New Mexico
Energy, Minerals and Natural Resources
Oil Conservation Division
1220 S. St Francis Dr.
Santa Fe, NM 87505

COMMENTS

Action 143540

COMMENTS

Operator: CHEVRON U S A INC 6301 Deauville Blvd Midland, TX 79706	OGRID: 4323
	Action Number: 143540
	Action Type: [C-103] Sub. Plugging (C-103P)

COMMENTS

Created By	Comment	Comment Date
plmartinez	DATA ENTRY PM	10/9/2022

District I
1625 N. French Dr., Hobbs, NM 88240
Phone:(575) 393-6161 Fax:(575) 393-0720
District II
811 S. First St., Artesia, NM 88210
Phone:(575) 748-1283 Fax:(575) 748-9720
District III
1000 Rio Brazos Rd., Aztec, NM 87410
Phone:(505) 334-6178 Fax:(505) 334-6170
District IV
1220 S. St Francis Dr., Santa Fe, NM 87505
Phone:(505) 476-3470 Fax:(505) 476-3462

State of New Mexico
Energy, Minerals and Natural Resources
Oil Conservation Division
1220 S. St Francis Dr.
Santa Fe, NM 87505

CONDITIONS

Action 143540

CONDITIONS

Operator: CHEVRON U S A INC 6301 Deauville Blvd Midland, TX 79706	OGRID: 4323
	Action Number: 143540
	Action Type: [C-103] Sub. Plugging (C-103P)

CONDITIONS

Created By	Condition	Condition Date
gcordero	None	10/7/2022