

Office  
 District I – (575) 393-6161  
 1625 N. French Dr., Hobbs, NM 88240  
 District II – (575) 748-1283  
 811 S. First St., Artesia, NM 88210  
 District III – (505) 334-6178  
 1000 Rio Brazos Rd., Aztec, NM 87410  
 District IV – (505) 476-3460  
 1220 S. St. Francis Dr., Santa Fe, NM  
 87505

State of New Mexico  
 Energy, Minerals and Natural Resources

Form C-103  
 Revised July 18, 2013

OIL CONSERVATION DIVISION  
 1220 South St. Francis Dr.  
 Santa Fe, NM 87505

WELL API NO. 30-025-03911	
5. Indicate Type of Lease STATE <input checked="" type="checkbox"/> FEE <input type="checkbox"/>	
6. State Oil & Gas Lease No.	
7. Lease Name or Unit Agreement Name West Lovington Unit	
8. Well Number	56
9. OGRID Number	
10. Pool name or Wildcat W. Lovington Upper San Andres	
4. Well Location Unit Letter <u>G</u> : <u>1980</u> feet from the <u>NORTH</u> line and <u>1980</u> feet from the <u>EAST</u> line Section <u>8</u> Township <u>17S</u> Range <u>36E</u> NMPM County <u>LEA</u>	
11. Elevation (Show whether DR, RKB, RT, GR, etc.) 3895' G.L.	

12. Check Appropriate Box to Indicate Nature of Notice, Report or Other Data

NOTICE OF INTENTION TO:

PERFORM REMEDIAL WORK ☐ PLUG AND ABANDON ☐  
 TEMPORARILY ABANDON ☐ CHANGE PLANS ☐  
 PULL OR ALTER CASING ☐ MULTIPLE COMPL ☐  
 DOWNHOLE COMMINGLE ☐  
 CLOSED-LOOP SYSTEM ☐  
 OTHER: ☐

SUBSEQUENT REPORT OF:

REMEDIAL WORK ☐ ALTERING CASING ☐  
 COMMENCE DRILLING OPNS. ☐ P AND A ☒  
 CASING/CEMENT JOB ☐ PNR  
 OTHER: ☐

13. Describe proposed or completed operations. (Clearly state all pertinent details, and give pertinent dates, including estimated date of starting any proposed work). SEE RULE 19.15.7.14 NMAC. For Multiple Completions: Attach wellbore diagram of proposed completion or recompletion.

Well abandonment details

5/11/2022: Squeeze 50 sacks Class C cement below packer from 5114', displace to 4650'.  
 5/12/2022: Leave packer in place at 4634'.  
 5/13/2022: Pressure test casing to 1000 psi for 15 minutes - good. Spot 35 sacks Class C cement from 4634' to 4297'. Mix and spot 30 sacks Class C cement from 3900' to 3611'.  
 Spot 30 sacks Class C cement from 3100' to 2811'. Perforate at 2100', no injection.  
 5/16/2022: Perforate at 1500', pressure to 1000 psi. Spot 80 sacks Class C cement from 2150' to 1375' (1379' tag) to cover perforations. Perforate at 1000'.  
 5/17/2022: Cut and pull 5-1/2" casing from 1000'  
 5/18/2022: Spot 35 sacks Class C cement from 1050' to 854'. Tag at 876'. Perforate at 385'. Circulate 200 sacks Class C cement to surface.

Spud Date:

Rig Release Date:

I hereby certify that the information above is true and complete to the best of my knowledge and belief.

SIGNATURE Hayes Thibodeaux TITLE Engineer DATE 7/20/2022

Type or print name Hayes Thibodeaux E-mail address: Hayes.thibodeaux@chevron.com PHONE: 281-726-9683

For State Use Only

APPROVED BY: Kerry Fortner TITLE Compliance Officer A DATE 10/12/22

Conditions of Approval (if any):



# EMC Ops Summary - External

Well Name WEST LOVINGTON UNIT 056	Field Name LOVINGTON WEST	Lease West Lovington Unit	Area Central
Business Unit EMC	County/ Parish Lea	Global Metrics Region EMC US East	Surface UWI 3002503911

Basic Well Data			
Current RKB Elevation 3,895.00, 5/17/2022	Original RKB Elevation (ft) 3,895.00	Latitude (°) 32° 51' 4.68" N	Longitude (°) 103° 22' 29.28" W

Phases					
Actual Start Date	Actual End Date	Phase 1	Phase 2	Time Log Hrs (hr)	Percent Problem Time (%)
2/4/2022 07:00	4/27/2022 10:00	PREP	FAC	13.00	
5/11/2022 07:00	5/11/2022 08:00	MOB	MOVEON	1.00	
5/11/2022 08:00	5/11/2022 15:15	ABAN	TBGPULL	7.25	13.79
5/11/2022 15:15	5/16/2022 07:00	ABAN	CMTPLUG	20.25	
5/16/2022 07:00	5/19/2022 08:30	ABAN	CSGPULL	34.00	
5/24/2022 13:00	5/25/2022 14:00	REST	FAC	8.00	

Start Date	Summary
2/4/2022	HSE meeting, hazard hunt, wellhead gas/pressure checks, reviewed dig pan, location line sweep, unload equipment, hand dig around wellhead to expose risers, dug out to a depth of 11 ft in extremely hard caliche rock, removed old plumbing, built new assemblies, installed new risers, painted new valves as per code, backfilled excavation, cleared location of brush and mesquite trees, load and secured equipment, location is prepped.
4/27/2022	HSE meeting, hazard hunt, location gas test, unload/inspect equipment, broke out concrete slab, move debris outside location, excavate iseway of concrete base, pushed/dragged concrete base out of location, backfilled cavity, location is ready for rig.
5/11/2022	Complete journey management and road rig and equipment to WLU 56. Hold safety meeting & JSA. Rig up rig, WSR used stop work and had crew rig down due to unlevel footing for rig. Check well pressures surface casing 0 psi, intermediate casing 600 psi, production casing 600 pai & tbg 100 psi, bleed well down. Test tbg to 1000 psi, establish injection rate of 1.5 BPM @ 900 psi. Recieved approval from Kerry Fortner with OCD to pump 50 sx cement. Mix and pump 50 sx class C cement from 5114' displace TOC to 4650'. Close well in with 1200 psi.
5/12/2022	JSA and safety meeting. Haul in dirt and build up pad for rig until satisfactory. R/U basebeam and rig. Check pressures - 0 psi on tubing, 80 psi on production casing, 600 psi on intermediate casing, 0 psi on surface casing. Bleed off pressures. N/D wellhead, abnormal configuration than what we have encountered and very hard to N/D. N/U spool and BOP. N/U enviropan. Pressure test BOP 250 psi for 5 minutes, 1000 psi for 10 minutes, held good. R/U workfloor, tubing equipment, geranimo, pipe racks. Attempt to unseat packer, could not unseat. Recieved approval from OCD to leave packer @ 4634'. Rig experienced mechanical issues, called mechanic for morning. Secure well for night.
5/13/2022	JSA and safety meeting. Replace air valve on rig. Check pressures - 0 psi tubing, 80 psi production casing, 550 psi intermediate casing, 0 psi surface casing. Bleed off all strings. EOT @ 4634'. Circulate 60 bbls 10 ppg brine. Pressure test production casing, held 1000 psi for 15 minutes no leak off. Mix and spot 45 bbls salt gel MLF to first perf. Mix and spot 35 sx class C 1.32 yield 14.8 ppg cement @ 4634'-4297'. Waived tag requirement w/ NMOCD. TOH 24 jts, EOT @ 3900'. Mix and spot 30 sx class C 1.32 yield 14.8 ppg cement @ 3900'-3611'. TOH 26 jts, EOT @ 3100'. Mix and spot 30 sx class C 1.32 yield 14.8 ppg cement @ 3100'-2811'. TOH all jts tubing and fill up well. Bubble test - pass on production casing, slight fail on intermediate and would drop fluid height w/ every bubble but would never stay static. Surface valve did not have bubbles but would not stay full. R/U wireline and make up 4 spf 60 deg phased DP. RIH & perf @ 2100'. POOH, lay down tools. Attempt injection, failed - pressured up 1000 psi held for 15 minutes. Secure well for night due to rig not holding air still.
5/16/2022	JSA and safety meeting. Check pressures - 300 psi productions, 300 psi intermediate, 0 surface. Bleed off pressures. Try circulation again, pressure up 1000 psi. Replace parts on rig. R/U wireline and make up 4 spf 60 deg phased DP. Recieved approval from NMOCD to add squeeze due to SCP build up. RIH and perf @ 1500'. Attempt circulation, held 1000 psi. TIH 69 jts 2-3/8" EOT @ 2150'. Recieved approval from NMOCD to cover 2 failed perfs (1500' & 2100') in one plug. Mix and spot 9 bbls salt gel MLF, good up to 1000'. Mix and spot 80 sx class C 1.32 yield 14.8 ppg cement @ 2150'-1375'. TOH 69 jts stand back. SI and pressure up 300 psi. Crew lunch break and WOC. Bleed off pressure and bubble test production and intermediate. Intermediate flowed foam, large bubble every 6 seconds max, jumping out of riser. R/U wireline, make up 4 spf 60 deg phase DP. RIH & perf @ 1000' to verify circulation from depth. Break circulation, circulate 10 bbls 10 ppg brine, white, foamy returns. R/U wireline, rehead. Wind started to pick up very strong, secure well for night.
5/17/2022	JSA and safety meeting. Check pressures and bleed off pressures - 150 psi production casing and intermediate casing, 0 psi surface. R/U wireline and make up cutter. TIH and cut 5-1/2" production casing @ 1000'. POOH and R/D wireline. R/D tubing equipment, workfloor, and pipe racks. N/D bird bath and 7-1/16" 5K BOP. N/D wellhead. Spear and pull up casing, pulled 100K and came free. Pulled up first jt and was dragging 20K overweight. Cut off casing hangar piece attached to casing. Wait on DSA spool to N/U BOP. N/U spool and 9" 5K BOP. Pressure test BOP 250 psi 5 minutes, 1000 psi 5 minutes, held good. R/U casing crew and casing equipment. Spear and pull 5-1/2" casing. Stop work, needed to remove tie back to get better trip speed for casing to slide down lay down machine. Pull a 15' cut piece, two 15' pup jts, 21 full jts 5-1/2", and one 25' cut jts. R/D casing crew. Secure well for night.
5/18/2022	JSA and safety meeting. Check pressures - 20 psi on 7-5/8", 0 psi surface casing. Make up crossovers and pick up scraper. TIH tag top of stub w/ scraper @ 1000'. Reverse circulate 60 bbls 10 ppg brine, white returns. TOH 32 jts, remove scraper. TIH EOT @ 1050'. Recieve approval from NMOCD to spot cement. Mix and spot 35 sx class C 1.32 yield 14.8 ppg cement w/ 2% cc @ 1050'-854'. TOH all tubing. WOC. Bubble test intermediate, pass. Bubble test surface string, would not stay full but had no gas readings. Tag TOC @ 876'. Mix and spot 24 bbls salt gel MLF to 385'. TOH all tubing, lay down. R/U wireline and make up 4 spf 60 deg phase strip gun w/ DP charges. RIH, perf @ 385'. Establish circulation 10 bbl 10 ppg brine. Mix and circulate 200 sx class C 1.32 yield 14.8 ppg cement @ 385'-0' w/ good returns to surface. R/D work floor and tubing equipment. R/D rig and ancillary equipment. N/D BOP, verify TOC, approx 10' below wellhead. Secure location for night.
5/19/2022	JSA and safety meeting. Complete pump R/D and break down hardlines. Load flatbed and move out.
5/24/2022	Drove to location, HSE meeting, hazard hunt, wellhead gas/pressure checks, dig plan review, performed location line sweep, removed recycable parts, unload equipment, excavate/cut anchors, backfilled diggings, excavated bell hole around wellhead, slopped excavation, built access ramp, rigged up oscillating saw, paneled up excavation, will comeback tomorrow.
5/25/2022	Drove to location, HSE meeting, set up equipment, unload backhoe, cut wellhead, removed saw from hole, toppled/removed wellhead from excavation, verified cement, welded marking pole, set sunotube/filled with cement, backfilled excavation, load/secured equipment, location is restored.

## As plugged schematic - WLU 56

Created: 04/25/19 By: \_\_\_\_\_  
 Updated: \_\_\_\_\_ By: \_\_\_\_\_  
 Lease: West Lovington Unit  
 Field: West Lovington Unit  
 Surf. Loc.: 1980 FNL & 1980 FEL  
 Bot. Loc.: \_\_\_\_\_  
 County: Lea St.: NM  
 Status: \_\_\_\_\_

Well #: 56 St. Lse: \_\_\_\_\_  
 API: 30-025-03911  
 Unit Ltr.: G Section: 8  
 TSHP/Rng: 17S-36E  
 Unit Ltr.: \_\_\_\_\_ Section: \_\_\_\_\_  
 TSHP/Rng: \_\_\_\_\_  
 Directions: Lovington, NM  
 Chevno: FA5058

## Surface Casing

Size: 10-3/4"  
 Wt., Grd.: 40.5#  
 Depth: 335'  
 Sxs Cmt: 230  
 Circulate: Yes  
 TOC: Surface  
 Hole Size: 13-3/4"

KB: \_\_\_\_\_  
 DF: \_\_\_\_\_  
 GL: 3,895  
 Ini. Spud: 02/16/45  
 Ini. Comp.: 03/14/45

## Intermediate Casing

Size: 7-5/8"  
 Wt., Grd.: 24#  
 Depth: 1991'  
 Sxs Cmt: 600  
 Circulate: No  
 TOC: 510 50% FILL-UP  
 Hole Size: 9-7/8"

Perf at 385' circ to surface  
 in all strings, WOC verify  
 cmt @ surface.

Cut and pull from 1000'  
 Spot cmt from 1050' to 876' tag

Perforate at 1500', no injection  
 Spot 80 sacks Class C cement  
 from 2150' to 1375 (1379' tag)

Perf at 2100', no injection

## Production Casing

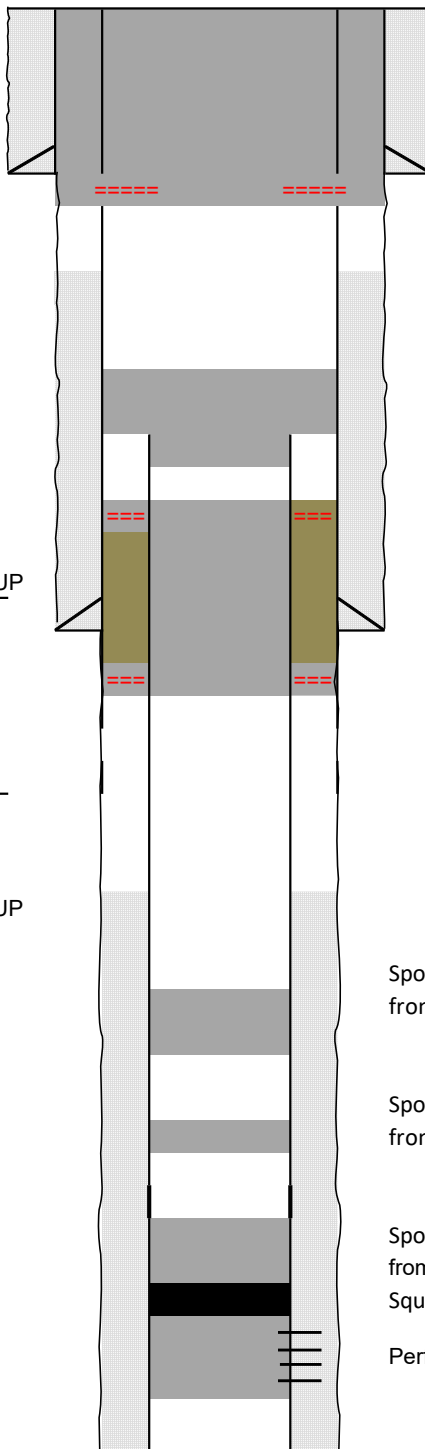
Size: 5-1/2"  
 Wt., Grd.: 14#  
 Depth: 5055  
 Sxs Cmt: 400  
 Circulate: No  
 TOC: 2516 50% FILL-UP  
 Hole Size: 6-3/4"

Spot 30 sacks Class C cement  
 from 3100' to 2811'

Spot 30 sacks Class C cement  
 from 3900' to 3611'

Spot 35 sacks Class C cement  
 from 4634' to 4297'  
 Squeeze 50 sacks Class C cmt below packs

Perfs: 4720' - 5050'



**District I**  
1625 N. French Dr., Hobbs, NM 88240  
Phone:(575) 393-6161 Fax:(575) 393-0720

**District II**  
811 S. First St., Artesia, NM 88210  
Phone:(575) 748-1283 Fax:(575) 748-9720

**District III**  
1000 Rio Brazos Rd., Aztec, NM 87410  
Phone:(505) 334-6178 Fax:(505) 334-6170

**District IV**  
1220 S. St Francis Dr., Santa Fe, NM 87505  
Phone:(505) 476-3470 Fax:(505) 476-3462

State of New Mexico  
Energy, Minerals and Natural Resources  
Oil Conservation Division  
1220 S. St Francis Dr.  
Santa Fe, NM 87505

COMMENTS

Action 127337

COMMENTS

Operator: CHEVRON U S A INC 6301 Deauville Blvd Midland, TX 79706	OGRID: 4323
	Action Number: 127337
	Action Type: [C-103] Sub. Plugging (C-103P)

COMMENTS

Created By	Comment	Comment Date
plmartinez	DATA ENTRY PM	10/12/2022

**District I**  
1625 N. French Dr., Hobbs, NM 88240  
Phone:(575) 393-6161 Fax:(575) 393-0720  
**District II**  
811 S. First St., Artesia, NM 88210  
Phone:(575) 748-1283 Fax:(575) 748-9720  
**District III**  
1000 Rio Brazos Rd., Aztec, NM 87410  
Phone:(505) 334-6178 Fax:(505) 334-6170  
**District IV**  
1220 S. St Francis Dr., Santa Fe, NM 87505  
Phone:(505) 476-3470 Fax:(505) 476-3462

**State of New Mexico**  
**Energy, Minerals and Natural Resources**  
**Oil Conservation Division**  
**1220 S. St Francis Dr.**  
**Santa Fe, NM 87505**

CONDITIONS

Action 127337

CONDITIONS

Operator: CHEVRON U S A INC 6301 Deauville Blvd Midland, TX 79706	OGRID: 4323
	Action Number: 127337
	Action Type: [C-103] Sub. Plugging (C-103P)

CONDITIONS

Created By	Condition	Condition Date
kfortner	Need C103Q and marker pics to release	10/12/2022