

Office
 District I – (575) 393-6161
 1625 N. French Dr., Hobbs, NM 88240
 District II – (575) 748-1283
 811 S. First St., Artesia, NM 88210
 District III – (505) 334-6178
 1000 Rio Brazos Rd., Aztec, NM 87410
 District IV – (505) 476-3460
 1220 S. St. Francis Dr., Santa Fe, NM
 87505

State of New Mexico
 Energy, Minerals and Natural Resources

Form C-103
 Revised July 18, 2013

OIL CONSERVATION DIVISION
 1220 South St. Francis Dr.
 Santa Fe, NM 87505

WELL API NO. 30-007-20190
5. Indicate Type of Lease STATE <input type="checkbox"/> FEE <input checked="" type="checkbox"/>
6. State Oil & Gas Lease No. N/A
7. Lease Name or Unit Agreement Name VPR B
8. Well Number 15
9. OGRID Number 328741
10. Pool name or Wildcat Castle Rock Park-Vermejo Gas
11. Elevation (Show whether DR, RKB, RT, GR, etc.) 8143

SUNDRY NOTICES AND REPORTS ON WELLS

(DO NOT USE THIS FORM FOR PROPOSALS TO DRILL OR TO DEEPEN OR PLUG BACK TO A DIFFERENT RESERVOIR. USE "APPLICATION FOR PERMIT" (FORM C-101) FOR SUCH PROPOSALS.)

1. Type of Well: Oil Well ☐ Gas Well ☒ Other

2. Name of Operator
Wapiti Operating LLC

3. Address of Operator
1310 W. Sam Houston Parkway North, Houston TX 77043

4. Well Location
 Unit Letter H : 1366 feet from the north line and 887 feet from the east line
 Section 35 Township 30N Range 18E NMPM County Colfax

12. Check Appropriate Box to Indicate Nature of Notice, Report or Other Data

NOTICE OF INTENTION TO:

PERFORM REMEDIAL WORK ☐ PLUG AND ABANDON ☐
 TEMPORARILY ABANDON ☐ CHANGE PLANS ☐
 PULL OR ALTER CASING ☒ MULTIPLE COMPL ☐
 DOWNHOLE COMMINGLE ☐
 CLOSED-LOOP SYSTEM ☐
 OTHER: ☐

SUBSEQUENT REPORT OF:

REMEDIAL WORK ☐ ALTERING CASING ☐
 COMMENCE DRILLING OPNS. ☐ P AND A ☐
 CASING/CEMENT JOB ☐
 OTHER: ☐

13. Describe proposed or completed operations. (Clearly state all pertinent details, and give pertinent dates, including estimated date of starting any proposed work). SEE RULE 19.15.7.14 NMAC. For Multiple Completions: Attach wellbore diagram of proposed completion or recompletion.

Plan to perforate and hydraulically frac multiple new intervals. See attached existing and proposed wellbore diagrams.
 All new intervals, like existing intervals, are in the Castle Rock Park-Vermejo Gas pool #97046
 Gas is produced up the casing and water up the tubing.
 The well is currently connected to Wapiti's gathering system.
 Wapiti has sufficient pipeline, processing, storage, sales, and disposal capacity for the added volumes.

Spud Date:

5/1/2000

Rig Release Date:

5/2/2000

I hereby certify that the information above is true and complete to the best of my knowledge and belief.

SIGNATURE Ed Skrljac TITLE Engineer Consultant DATE 10-13-22

Type or print name Edward Skrljac E-mail address: eskrjac@wapitienergy.com PHONE: 281-635-0215

For State Use Only

APPROVED BY: [Signature] TITLE Petroeum Specialist DATE 10/18/2022

Conditions of Approval (if any):



Vermejo Park Ranch B-15
S-T-R: 35-30N-18E
Colfax County, New Mexico
API #: 30-007-20190
AFE: 22WN16

CURRENT: The B-15 is currently producing 17 mcf/d and 8 bwp/d. The well was originally spud in May of 2000, then completed originally between 2,281' and 2,498' in two stages using plug and perf and frac'd with N2 and a 30# linear gel. A year later, the well was recompleted uphole from 912' to 1,909' in 7 stages utilizing a Cobra frac tool. The well has cumulative production of 238 MMCF and 119 MBW.

OBJECTIVE: Move in a workover rig and pull the rods and tubing on this well. Afterwards, will set a cast iron bridge plug to isolate the lower perforations, then perforate multiple uphole zones together. The tubing will be reran along with the rods and put on test. If warranted, we will pull tubing and perform thru tubing acid jobs utilizing a straddle packer system, then put on test. After monitoring production for stable flow it is determined that fracture stimulation is needed, then that will be performed utilizing a similar type straddle packer system.

WELLBORE (see attached WBD):

8-5/8" 23# J-55 casing set at 335'. Cemented with 100 sx. Circulated 4 bbls cmt to surface.

5-1/2" 15.5# J-55 LTC casing set at 2,565'. Burst of 5-1/2" csg is 4,810 psi. Cemented with 375 sx cement, no cmt to surface. CBL TOC @ 335'. PBTD is 2,552'.

Tubing string: 2-7/8" 6.5# J-55 tubing. EOT at 2,530'.

Rod string: 1-1/4" polished rod, 99 jts 3/4" rods, 1-1/2" x 8' insert pump at 2,511'.

Current Perforations: 912' to 2,498' (overall).

PROCEDURE:**ISOLATE LOWER ZONES THEN PERFORATE NEW ZONES**

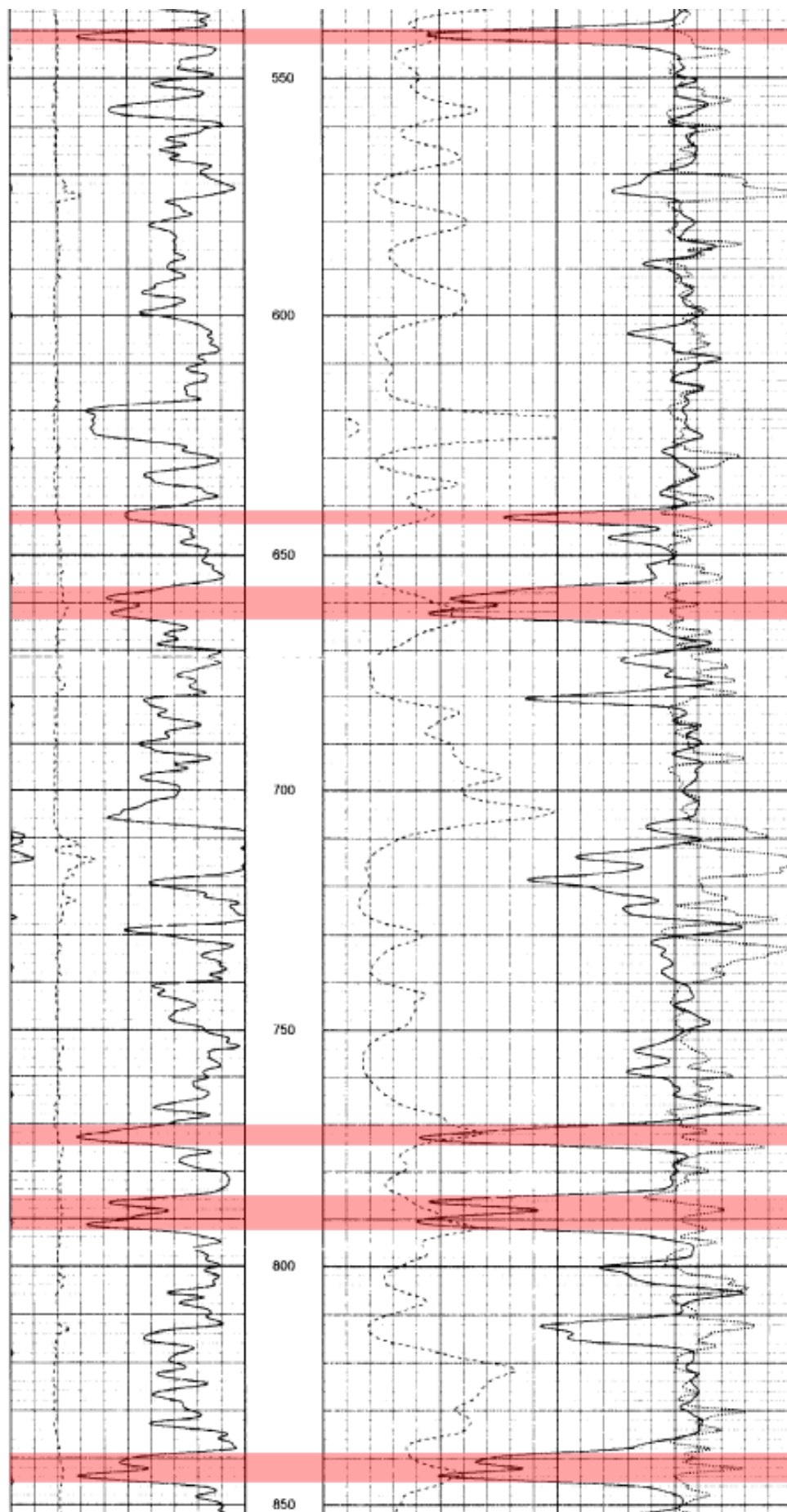
1. Check all equipment is function tested and rated to appropriate working pressure. Pull test ground anchors prior to workover rig moving on location. Plan to perform daily JSA's.
2. MIRU workover rig. Unhang rods. POOH standing back.
3. ND wellhead. Screw on 7-1/16" X 5M BOPE. Pressure test BOPS to 4,000 psi.
4. POOH standing back tubing.
5. P/U 4.75" bit and scraper and rbiH to 2,552'. POOH. N/D BOP, N/U lwr master valve.
6. Top connection on lwr master valve is 5-1/2" 8rd/LTC. RIH and perforate the following intervals:
 - a. 539-43'
 - b. 641-43' + 656-64'
 - c. 770-74' + 785-92'
 - d. 839-46'
 - e. ALL 4 SPF / 90 DEG PHASING WITH 3-1/8" GUN
7. RDMO e-line. N/D lwr master, N/U bope.
8. RBIH with tubing and hang off at 2,530'.
9. N/D BOPE, N/U wellhead/flow tee. RIH with pump and rods and space out as needed.
10. Load tubing with FSW. Verify pump action.
11. Hang off rods, N/U flowlines, put well on pump and turn to sales.

ACIDIZE EXISTING PERFORATIONS VIA STRADDLE PACKER SYSTEM

12. MIRU workover rig. POOH w/ rods. N/D wellhead and POOH with tubing, standing back.
13. RBIH with tubing and straddle packer assembly per final vendor recommendation. Set packers across an unperforated section of casing and pressure up to 3,000 psi to verify tool is working.
14. Get on depth by tagging plug then pulling into position with tubing tally and mechanical CCL. Pump acid job as per final design.
15. Pick up and acidize the remaining zones the same way. POOH.
16. RBIH with tubing and rods to same depths as last completion after perforating. TTS.

FRACTURE STIMULATE VIA STRADDLE PACKER SYSTEM

17. MIRU workover rig. POOH w/ rods. N/D wellhead and POOH with tubing, standing back.
18. RBIH with tubing and straddle packer assembly per final vendor recommendation. Set packers across an unperforated section of casing and pressure up to 3,000 psi to verify tool is working.
19. Get on depth by tagging plug then pulling into position with tubing tally and mechanical CCL. Pump fracture stimulation job as per final design.
20. Pick up and frac the remaining zones the same way. POOH. Remove straddle packer system. RBIH with 4.75" bit and AFU and clean well out to PBTD (2,530'). POOH.
21. RBIH with tubing and rods to same depths as last completion after perforating. TTS.





VPR B-15

API: 30-007-20190

Colfax County, NM

S-T-R: 35-30N-18E

WELLBORE DIAGRAM: 9/8/2022

GL: 8,143'
 RKB:
 Spud: 5/1/2000
 TD'd well: 5/2/2000
 Completed: 7/28/2000
 Last workover: 12/2/2023
 Last modified: 9/8/2022 ES

PRODUCTION TUBING DETAIL 12/2/23

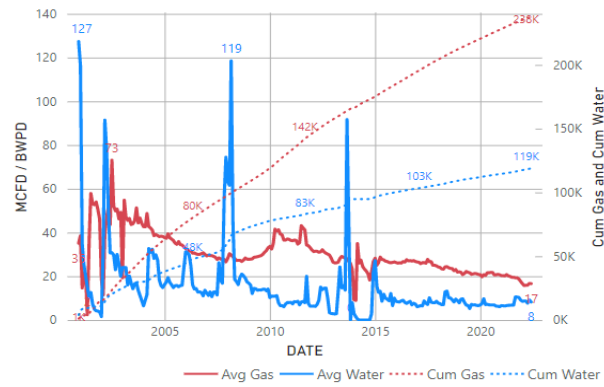
KB:	0.00	0.00
2 2-7/8" pup jts (8', 4',)	12.4	12.40
79 jts 2-7/8"	2501.88	2514.28
1 jt sn	1.10	2515.38
2 jts 2-7/8" sub and tpc (8', 6')	14.60	2529.98

End of tubing: 2529.98

ROD AND PUMP DETAIL: 12/2/23

1-1/4" x 16' polish rod	16	10 (landed 11')
3/4" Pony Rods (6,8,8')	22	32
99 jts 3/4" rods	2475	2507
1 7/8" guided pony rod	4	2511
1-1/2" X 8' insert pump		2511

VPR B 015



5-1/2" 15.5# J-55 LTC CASING SPECS:

ID: 4.950 inches
 Drift: 4.825 inches
 Burst: 4,810 psi
 Collapse: 4,040 psi
 Capacity: 0.0238 bbl/ft
 skrljac

11" hole

7-7/8" hole

PBTD - 2,552'

TD - 2,595'

TVD - 2,595'

Current as of 8/29/2022

8 5/8" 24# J-55 surface casing set at 335'. Cemented with 100 sacks.
 4 bbls cmt to surface

STAGE #7: Patterson perf'd 7th stage - 912' - 914' 6/7/2001

Cobra frac - 139 gals 7.5% HCL acid, 70% N2 foam, with 19,200 lbs 16/30, w/ATP 6075 psi, ISIP 2080.

STAGE #6: Patterson perf'd 6th stage -1001' - 1003' 6/7/2001

Cobra frac - 481 gals 7.5% HCL acid, 70% N2 foam, with 19,388 lbs 16/30, w/ATP 5874 psi, ISIP 1400.

STAGE #5: Patterson perf'd 5th stage - 1020' - 1022' 6/7/2001

Cobra frac - 175 gals 7.5% HCL acid, 70% N2 foam, with 19,511 lbs 16/30, w/ATP 5782 psi, ISIP 1370.

STAGE #4: Patterson perf'd 4th stage -1081' - 1084', 1093' - 1096' 6/7/2001

Cobra frac - 358 gals 7.5% HCL acid, 70% N2 foam, with 54,640 lbs 16/30, w/ATP 6122 psi, ISIP 1300.

STAGE #3: Patterson perf'd 3rd stage - 1144' - 1147' 6/6/2001

Cobra frac - 258 gals 7.5% HCL acid, 70% N2 foam, with 26,965 lbs 16/30, w/ATP 5861 psi, ISIP 1230.

STAGE #2: Patterson perf'd 2nd stage - 1206' - 1210' 6/6/2001

Cobra frac - 273 gals 7.5% HCL acid, 70% N2 foam, with 32,969 lbs 16/30, w/ATP 5727 psi, ISIP 1225.

STAGE #1: Patterson perf'd 1st stage- 1894' - 1899', 1903' -1909' 6/6/2001

Cobra frac - 597 gals 7.5% HCL acid, 70% N2 foam, with 77,471 lbs 16/30, w/ATP 5713 psi, ISIP 1740.

Cobra frac stages performed with a 15# X-link Delta frac system

STAGE #2: 2,281-87' + 2,296-00' + 2,339-343' (4spf) 7/25/2002

HES 500 gal 15% HCL + 13,334 gal 30# N2 foam and 20K lbs 20/40 + 60K lbs 12/20 avg 21.5 bpm and 1,613 psi

STAGE #1: 2,418-22' + 2,425-29' + 2,446-50' + 2,464-68' + 2,493-98' (4 spf) 7/24/2000

HES 1000 gal 15% HCL +30,913 gal 30# N2 foam and 30K lbs 20/40 + 100K lbs 12/20 avg 21.5 bpm and 1,313 psi

ORIGINAL 2 STAGES PERFORMED WITH A 30# LINEAR GEL

5-1/2" 15.5# M-50 LTC production casing set at 2,565'. Cemented with 375 sx of cement.
 No cmt returns to surface. TOC from CBL 5/12/2000 is 335'



VPR B-15

API: 30-007-20190

Colfax County, NM

S-T-R: 35-30N-18E

WELLBORE DIAGRAM: 9/8/2022

GL: 8,143'
 RKB:
 Spud: 5/1/2000
 TD'd well: 5/2/2000
 Completed: 7/28/2000
 Last workover: 12/2/2023
 Last modified: 9/8/2022 ES

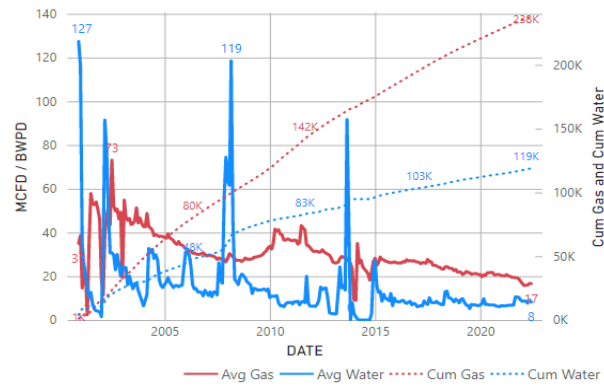
PRODUCTION TUBING DETAIL 12/2/23

KB:	0.00	0.00
2 2-7/8" pup jts (8', 4')	12.4	12.40
79 jts 2-7/8"	2501.88	2514.28
1 jt sn	1.10	2515.38
2 jts 2-7/8" sub and tpc (8', 6')	14.60	2529.98
End of tubing:	2529.98	

ROD AND PUMP DETAIL: 12/2/23

1-1/4" x 16' polish rod	16	10 (landed 11')
3/4" Pony Rods (6,8,8')	22	32
99 jts 3/4" rods	2475	2507
1 7/8" guided pony rod	4	2511
1-1/2" X 8' insert pump		2511

VPR B 015



5-1/2" 15.5# J-55 LTC CASING SPECS:

ID: 4.950 inches
 Drift: 4.825 inches
 Burst: 4,810 psi
 Collapse: 4,040 psi
 Capacity: 0.0238 bbl/ft
 skrljac

11" hole

7-7/8" hole

PBTD - 2,552'

TD - 2,595'

TVD - 2,595'

PROPOSED

8 5/8" 24# J-55 surface casing set at 335'. Cemented with 100 sacks.
 4 bbls cmt to surface

STAGE #4: 539-43' w/ 3-1/8" GUN

STAGE #3: 656-64' + 641-43' w/ 3-1/8" GUN

STAGE #2: 785-92' + 770-74' w/ 3-1/8" GUN

STAGE #1: 839-46' w/ 3-1/8" GUN

STAGE #7: Patterson perf'd 7th stage - 912' - 914' 6/7/2001

Cobra frac - 139 gals 7.5% HCL acid, 70% N2 foam, with 19,200 lbs 16/30, w/ATP 6075 psi, ISIP 2080.

STAGE #6: Patterson perf'd 6th stage -1001' - 1003' 6/7/2001

Cobra frac - 481 gals 7.5% HCL acid, 70% N2 foam, with 19,388 lbs 16/30, w/ATP 5874 psi, ISIP 1400.

STAGE #5: Patterson perf'd 5th stage - 1020' - 1022' 6/7/2001

Cobra frac - 175 gals 7.5% HCL acid, 70% N2 foam, with 19,511 lbs 16/30, w/ATP 5782 psi, ISIP 1370.

STAGE #4: Patterson perf'd 4th stage -1081' - 1084', 1093' - 1096' 6/7/2001

Cobra frac - 358 gals 7.5% HCL acid, 70% N2 foam, with 54,640 lbs 16/30, w/ATP 6122 psi, ISIP 1300.

STAGE #3: Patterson perf'd 3rd stage - 1144' - 1147' 6/6/2001

Cobra frac - 258 gals 7.5% HCL acid, 70% N2 foam, with 26,965 lbs 16/30, w/ATP 5861 psi, ISIP 1230.

STAGE #2: Patterson perf'd 2nd stage - 1206' - 1210' 6/6/2001

Cobra frac - 273 gals 7.5% HCL acid, 70% N2 foam, with 32,969 lbs 16/30, w/ATP 5727 psi, ISIP 1225.

STAGE #1 Patterson perf'd 1st stage- 1894' - 1899', 1903' -1909' 6/6/2001

Cobra frac - 597 gals 7.5% HCL acid, 70% N2 foam, with 77,471 lbs 16/30, w/ATP 5713 psi, ISIP 1740.

Cobra frac stages performed with a 15# X-link Delta frac system

STAGE #2: 2,281-87' + 2,296-00' + 2,339-343' (4spf) 7/25/2002

HES 500 gal 15% HCL + 13,334 gal 30# N2 foam and 20K lbs 20/40 + 60K lbs 12/20 avg 21.5 bpm and 1,613 psi

STAGE #1: 2,418-22' + 2,425-29' + 2,446-50' + 2,464-68' + 2,493-98' (4 spf) 7/24/2000

HES 1000 gal 15% HCL +30,913 gal 30# N2 foam and 30K lbs 20/40 + 100K lbs 12/20 avg 21.5 bpm and 1,313 psi

ORIGINAL 2 STAGES PERFORMED WITH A 30# LINEAR GEL

5-1/2" 15.5# M-50 LTC production casing set at 2,565'. Cemented with 375 sx of cement.
 No cmt returns to surface. TOC from CBL 5/12/2000 is 335'

State of New Mexico
Energy, Minerals and Natural Resources Department

Submit Electronically
Via E-permitting

Oil Conservation Division
1220 South St. Francis Dr.
Santa Fe, NM 87505

NATURAL GAS MANAGEMENT PLAN

This Natural Gas Management Plan must be submitted with each Application for Permit to Drill (APD) for a new or recompleted well.

Section 1 – Plan Description **Effective May 25, 2021**

I. Operator: WAPITI OPERATING, LLC **OGRID:** 328741 **Date:** 10 / 13 / 22

II. Type: ☒ Original ☐ Amendment due to ☐ 19.15.27.9.D(6)(a) NMAC ☐ 19.15.27.9.D(6)(b) NMAC ☐ Other.

If Other, please describe: _____

III. Well(s): Provide the following information for each new or recompleted well or set of wells proposed to be drilled or proposed to be recompleted from a single well pad or connected to a central delivery point.

Well Name	API	ULSTR	Footages	Anticipated Oil BBL/D	Anticipated Gas MCF/D	Anticipated Produced Water BBL/D
VPR B-15	30-007-20190	H-35-30N-18E	1366 FNL	0	200	100
			887 FEL			

IV. Central Delivery Point Name: Existing pipeline on same pad [See 19.15.27.9(D)(1) NMAC]

V. Anticipated Schedule: Provide the following information for each new or recompleted well or set of wells proposed to be drilled or proposed to be recompleted from a single well pad or connected to a central delivery point.

Well Name	API	Spud Date	TD Reached Date	Completion Commencement Date	Initial Flow Back Date	First Production Date
VPR B-15	30-007-20190	05/01/2000	05/02/2000	10/25/2022	10/30/2022	11/30/2022

VI. Separation Equipment: ☒ Attach a complete description of how Operator will size separation equipment to optimize gas capture.

VII. Operational Practices: ☒ Attach a complete description of the actions Operator will take to comply with the requirements of Subsection A through F of 19.15.27.8 NMAC.

VIII. Best Management Practices: ☒ Attach a complete description of Operator's best management practices to minimize venting during active and planned maintenance.

Section 2 – Enhanced Plan**EFFECTIVE APRIL 1, 2022**

Beginning April 1, 2022, an operator that is not in compliance with its statewide natural gas capture requirement for the applicable reporting area must complete this section.

☒ Operator certifies that it is not required to complete this section because Operator is in compliance with its statewide natural gas capture requirement for the applicable reporting area.

IX. Anticipated Natural Gas Production:

Well	API	Anticipated Average Natural Gas Rate MCF/D	Anticipated Volume of Natural Gas for the First Year MCF

X. Natural Gas Gathering System (NGGS):

Operator	System	ULSTR of Tie-in	Anticipated Gathering Start Date	Available Maximum Daily Capacity of System Segment Tie-in

XI. Map. ☐ Attach an accurate and legible map depicting the location of the well(s), the anticipated pipeline route(s) connecting the production operations to the existing or planned interconnect of the natural gas gathering system(s), and the maximum daily capacity of the segment or portion of the natural gas gathering system(s) to which the well(s) will be connected.

XII. Line Capacity. The natural gas gathering system ☐ will ☐ will not have capacity to gather 100% of the anticipated natural gas production volume from the well prior to the date of first production.

XIII. Line Pressure. Operator ☐ does ☐ does not anticipate that its existing well(s) connected to the same segment, or portion, of the natural gas gathering system(s) described above will continue to meet anticipated increases in line pressure caused by the new well(s).

☐ Attach Operator's plan to manage production in response to the increased line pressure.

XIV. Confidentiality: ☐ Operator asserts confidentiality pursuant to Section 71-2-8 NMSA 1978 for the information provided in Section 2 as provided in Paragraph (2) of Subsection D of 19.15.27.9 NMAC, and attaches a full description of the specific information for which confidentiality is asserted and the basis for such assertion.

Section 3 - Certifications

Effective May 25, 2021

Operator certifies that, after reasonable inquiry and based on the available information at the time of submittal:

☒ Operator will be able to connect the well(s) to a natural gas gathering system in the general area with sufficient capacity to transport one hundred percent of the anticipated volume of natural gas produced from the well(s) commencing on the date of first production, taking into account the current and anticipated volumes of produced natural gas from other wells connected to the pipeline gathering system; or

☐ Operator will not be able to connect to a natural gas gathering system in the general area with sufficient capacity to transport one hundred percent of the anticipated volume of natural gas produced from the well(s) commencing on the date of first production, taking into account the current and anticipated volumes of produced natural gas from other wells connected to the pipeline gathering system.

If Operator checks this box, Operator will select one of the following:

Well Shut-In. ☐ Operator will shut-in and not produce the well until it submits the certification required by Paragraph (4) of Subsection D of 19.15.27.9 NMAC; or

Venting and Flaring Plan. ☐ Operator has attached a venting and flaring plan that evaluates and selects one or more of the potential alternative beneficial uses for the natural gas until a natural gas gathering system is available, including:

- (a) power generation on lease;
- (b) power generation for grid;
- (c) compression on lease;
- (d) liquids removal on lease;
- (e) reinjection for underground storage;
- (f) reinjection for temporary storage;
- (g) reinjection for enhanced oil recovery;
- (h) fuel cell production; and
- (i) other alternative beneficial uses approved by the division.

Section 4 - Notices

1. If, at any time after Operator submits this Natural Gas Management Plan and before the well is spud:

(a) Operator becomes aware that the natural gas gathering system it planned to connect the well(s) to has become unavailable or will not have capacity to transport one hundred percent of the production from the well(s), no later than 20 days after becoming aware of such information, Operator shall submit for OCD's approval a new or revised venting and flaring plan containing the information specified in Paragraph (5) of Subsection D of 19.15.27.9 NMAC; or

(b) Operator becomes aware that it has, cumulatively for the year, become out of compliance with its baseline natural gas capture rate or natural gas capture requirement, no later than 20 days after becoming aware of such information, Operator shall submit for OCD's approval a new or revised Natural Gas Management Plan for each well it plans to spud during the next 90 days containing the information specified in Paragraph (2) of Subsection D of 19.15.27.9 NMAC, and shall file an update for each Natural Gas Management Plan until Operator is back in compliance with its baseline natural gas capture rate or natural gas capture requirement.

2. OCD may deny or conditionally approve an APD if Operator does not make a certification, fails to submit an adequate venting and flaring plan which includes alternative beneficial uses for the anticipated volume of natural gas produced, or if OCD determines that Operator will not have adequate natural gas takeaway capacity at the time a well will be spud.

I certify that, after reasonable inquiry, the statements in and attached to this Natural Gas Management Plan are true and correct to the best of my knowledge and acknowledge that a false statement may be subject to civil and criminal penalties under the Oil and Gas Act.

Signature: <i>Ed Skrljac</i>
Printed Name: Ed Skrljac
Title: Engineering consultant
E-mail Address: eskrljac@wapitienergy.com
Date: 10/13/2022
Phone: 281-635-0215
OIL CONSERVATION DIVISION (Only applicable when submitted as a standalone form)
Approved By:
Title:
Approval Date:
Conditions of Approval:

VI. SEPARATION EQUIPMENT

Gas is produced up the casing and water is produced up the tubing. Both are then piped via existing buried pipelines to one of five existing central production facilities. Wapiti has ≈ 30 MMcfd and $\approx 3,000$ bwpd spare capacity in its system. No venting or flaring are planned.

VII. Operational Practices

NMAC 19.15.27.8 (A) Venting & Flaring of Natural Gas

1. Wapiti Operating, LLC will comply with NMAC 19.15.27.8 – venting and flaring of gas during drilling, completion, or production that constitutes waste as defined in 19.15.2 is banned.

NMAC 19.15.27.8 (B) Venting & Flaring During Drilling

1. Wapiti will capture or combust gas if technically feasible during drilling operations using best industry practices.
2. A flare stack with a 100% capacity for expected volume will be set on the pad ≥ 100 feet from the nearest well head and storage tank.
3. In an emergency, Wapiti will vent gas in order to avoid substantial impact. Wapiti will report vented or flared gas to the NMOCD.

NMAC 19.15.27.8 (C) Venting & Flaring During Completion or Recompletion

1. Facilities will be built and ready from the first day of flowback
2. Test separator will be properly separate gas and liquids. Temporary test separator will be used initially to process volumes. In addition, separator will be tied into flowback tanks which will be tied into the gas processing equipment for sale down a pipeline.
3. Should the facility not be ready to process gas, or the gas does not meet quality standards, then storage tanks will be set that are tied into gas busters or a temporary flare to manage all gas. This flare would meet the following requirements:
 - a) An appropriately sized flare stack with an automatic igniter
 - b) Wapiti analyzes gas samples twice a week
 - c) Wapiti flows the gas into a gathering line as soon as the line specifications are met
 - d) Wapiti provides the NMOCD with pipeline specifications and natural gas data.

NMAC 19.15.27.8 (D) Venting & Flaring During Production

Wapiti will not vent or flare natural gas except:

1. During an emergency or malfunction
2. To unload or clean-up liquid holdup in a well to atmospheric pressure, provided

- a) Wapiti does not vent after the well achieves a stabilized rate and pressure
 - b) Wapiti will be on-site while unloading liquids by manual purging and take all reasonable actions to achieve a stabilized rate and pressure as soon as possible
 - c) Wapiti will optimize the system to minimize gas venting if the well is equipped with a plunger lift or auto control system
 - d) Best management practices will be used during downhole well maintenance.
3. During the first year of production from an exploratory well provided
 - a) Wapiti receives approval from the NMOCD
 - b) Wapiti stays in compliance with NMOCD gas capture requirements
 - c) Wapiti submits an updated C-129 form to the NMOCD
 4. During the following activities unless prohibited
 - a) Gauging or sampling a storage tank or low-pressure production vessel
 - b) Loading out liquids from a storage tank
 - c) Repair and maintenance
 - d) Normal operation of a gas-activated pneumatic controller or pump
 - e) Normal operation of a storage tank but not including venting from a thief hatch
 - f) Normal operation of dehydration units
 - g) Normal operations of compressors, engines, turbines, valves, flanges, & connectors
 - h) During a bradenhead, packer leakage test, or production test lasting <24 hours
 - i) When natural gas does not meet the gathering line specifications
 - j) Commissioning of pipes, equipment, or facilities only for as long as necessary to purge introduced impurities.

NMAC 19.15.27.8 (E) Performance Standards

1. Wapiti used a safety factor to design the separation and storage equipment. The equipment will be routed to a vapor recovery system and uses a flare as back up for startup, shutdown, maintenance, or malfunction of the VRU system.
2. Wapiti will install a flare that will handle the full volume of vapors from the facility in case of VRU failure. It will have an auto-ignition system.
3. Flare stacks will be appropriately sized and designed to ensure proper combustion efficiency
 - a) Flare stacks installed or replaced will be equipped with an automatic ignitor or continuous pilot.
 - b) Previously installed flare stacks will be retrofitted within 18 months of May 25, 2021, with an automatic ignitor, continuous pilot, or technology that alerts Wapiti to flare malfunction.
 - c) Flare stacks replaced after May 25, 2021, will be equipped with an automatic ignitor or continuous pilot if at a well or facility with an average production of ≤ 60 Mcfd of natural gas.
 - d) Flare stacks will be located >100 feet from well head and storage tanks and securely anchored.

4. Wapiti will conduct an AVO inspection on all components for leaks and defects every week.
5. Wapiti will make and keep records of AVO inspections available to the NMOCD for at least 5 years.
6. Wapiti may use a remote or automated monitoring technology to detect leaks and releases in lieu of AVO inspections with prior NMOCD approval.
7. Facilities will be designed to minimize waste.
8. Wapiti will resolve emergencies as promptly as possible.

NMAC 19.15.27.8 (F) Measuring or Estimating Vented & Flared Natural Gas

1. Wapiti will have meters on both the low pressure and high-pressure sides of the flares. Volumes will be recorded in the SCADA system.
2. Wapiti will install equipment to measure the volume of flared natural gas that has an average production of ≥ 60 Mcfd.
3. Wapiti's measuring equipment will conform to industry standards.
4. Measurement system will be designed such that it cannot be bypassed except for inspections and servicing the meters.
5. Wapiti will estimate the volume of vented or flared gas using a methodology that can be independently verified if metering is not practicable due to low flow rate or pressure.
6. Wapiti will estimate the volume of vented and flared gas based on the results of an annual GOR test for wells that do not require measuring equipment reported on form C-116.
7. Wapiti will install measuring equipment whenever the NMOCD determines that metering is necessary.

VIII. Best Management Practices

Wapiti Operating, LLC will minimize venting during maintenance by:

1. System will be designed and operated to route storage tank and process equipment emissions to the VRU. If the VRU is not operable, then vapors will be routed to the flare.
2. Scheduling maintenance for multiple tasks to minimize the need for blowdowns.
3. After completion of maintenance, gas will be flared until it meets pipeline specifications.

District I
1625 N. French Dr., Hobbs, NM 88240
Phone:(575) 393-6161 Fax:(575) 393-0720
District II
811 S. First St., Artesia, NM 88210
Phone:(575) 748-1283 Fax:(575) 748-9720
District III
1000 Rio Brazos Rd., Aztec, NM 87410
Phone:(505) 334-6178 Fax:(505) 334-6170
District IV
1220 S. St Francis Dr., Santa Fe, NM 87505
Phone:(505) 476-3470 Fax:(505) 476-3462

State of New Mexico
Energy, Minerals and Natural Resources
Oil Conservation Division
1220 S. St Francis Dr.
Santa Fe, NM 87505

CONDITIONS

Action 151327

CONDITIONS

Operator: Wapiti Operating, LLC 1310 W Sam Houston PKWY N Houston, TX 77043	OGRID: 328741
	Action Number: 151327
	Action Type: [C-103] NOI Recompletion (C-103E)

CONDITIONS

Created By	Condition	Condition Date
kpickford	Notify NMOCD 24 Hours Prior to beginning operations	10/18/2022