

Submit a Copy To Appropriate District Office  
 District I – (575) 393-6161  
 1625 N. French Dr., Hobbs, NM 88240  
 District II – (575) 748-1283  
 811 S. First St., Artesia, NM 88210  
 District III – (505) 334-6178  
 1000 Rio Brazos Rd., Aztec, NM 87410  
 District IV – (505) 476-3460  
 1220 S. St. Francis Dr., Santa Fe, NM 87505

State of New Mexico  
 Energy, Minerals and Natural Resources

Form C-103  
 Revised July 18, 2013

OIL CONSERVATION DIVISION  
 1220 South St. Francis Dr.  
 Santa Fe, NM 87505

WELL API NO. 30-025-03775	
5. Indicate Type of Lease STATE <input checked="" type="checkbox"/> FEE <input type="checkbox"/>	
6. State Oil & Gas Lease No.	
7. Lease Name or Unit Agreement Name Lovington Paddock Unit	
8. Well Number	31
9. OGRID Number 241333	
10. Pool name or Wildcat [40660] Lovington, Paddock	
4. Well Location Unit Letter <u>L</u> : <u>1650</u> feet from the <u>SOUTH</u> line and <u>890</u> feet from the <u>WEST</u> line Section <u>36</u> Township <u>16S</u> Range <u>36E</u> NMPM County <u>LEA</u>	
11. Elevation (Show whether DR, RKB, RT, GR, etc.)	

12. Check Appropriate Box to Indicate Nature of Notice, Report or Other Data

NOTICE OF INTENTION TO:

PERFORM REMEDIAL WORK ☐ **PLUG AND ABANDON** ☒  
 TEMPORARILY ABANDON ☐ CHANGE PLANS ☐  
 PULL OR ALTER CASING ☐ MULTIPLE COMPL ☐  
 DOWNHOLE COMMINGLE ☐  
 CLOSED-LOOP SYSTEM ☐  
 OTHER: ☐

SUBSEQUENT REPORT OF:

REMEDIAL WORK ☐ ALTERING CASING ☐  
 COMMENCE DRILLING OPNS. ☐ P AND A ☐  
 CASING/CEMENT JOB ☐  
 OTHER: ☐

13. Describe proposed or completed operations. (Clearly state all pertinent details, and give pertinent dates, including estimated date of starting any proposed work). SEE RULE 19.15.7.14 NMAC. For Multiple Completions: Attach wellbore diagram of proposed completion or recompletion.

Spot 25 sacks Class C cement from 6006' to 5761'.  
 Spot 31 sacks Class C cement from 4626' to 4325'.  
 Perforate & squeeze 36 sacks Class C cement from 3930' to 3780'.  
 Perforate & squeeze 48 sacks Class C cement from 3366' to 3166'.  
 Perforate & squeeze 118 sacks Class C cement from 2146' to 1646'. WOC, tag, pressure test.  
 Perforate & squeeze 92 sacks Class C cement from 390' to 0'.

4" diameter 4' tall Above Ground Marker

SEE ATTACHED CONDITIONS  
 OF APPROVAL

Spud Date:

Rig Release Date:

I hereby certify that the information above is true and complete to the best of my knowledge and belief.

SIGNATURE Hayes Thibodeaux TITLE Engineer DATE 8/11/2022

Type or print name Hayes Thibodeaux E-mail address: Hayes.Thibodeaux@chevron.com PHONE: 281-726-9683

**For State Use Only**

APPROVED BY: Kerry Fortner TITLE Compliance Officer A DATE 10/21/22  
 Conditions of Approval (if any): 575-263-6633

**CONDITIONS OF APPROVAL  
FOR PLUGGING AND ABANDONMENT  
OCD - Southern District**

The following is a guide or checklist in preparation of a plugging program, this is not all inclusive and care must be exercised in establishing special plugging programs in unique and unusual cases, Notify NMOCD District Office I (Hobbs) at (575)-263-6633 at least 24 hours before beginning work. After MIRU rig will remain on well until it is plugged to surface. OCD is to be notified before rig down.

**Company representative will be on location during plugging procedures.**

1. A notice of intent to plug and abandon a wellbore is required to be approved before plugging operations are conducted. A cement evaluation tool is required in order to ensure isolation of producing formations, protection of water and correlative rights. A cement bond log or other accepted cement evaluation tool is to be provided to the division for evaluation if one has not been previously run or if the well did not have cement circulated to surface during the original casing cementing job or subsequent cementing jobs. Insure all bradenheads have been exposed, identified and valves are operational prior to rig up.
2. Closed loop system is to be used for entire plugging operation. Upon completion, contents of steel pits are to be hauled to a permitted disposal location.
3. Trucking companies being used to haul oilfield waste fluids to a disposal - commercial or private- shall have an approved NMOCD C-133 permit. A copy of this permit shall be available in each truck used to haul waste products. It is the responsibility of the operator as well as the contractor, to verify that this permit is in place prior to performing work. Drivers shall be able to produce a copy upon request of an NMOCD Field inspector.
4. Filing a subsequent C-103 will serve as notification that the well has been plugged.
5. A final C-103 shall be filed (and a site inspection by NMOCD Inspector to determine if the location is satisfactorily cleaned, all equipment, electric poles and trash has been removed to Meet NMOCD standards) before bonding can be released.
6. If work has not begun within 1 Year of the approval of this procedure, an extension request must be file stating the reason the well has not been plugged.
7. Squeeze pressures are not to exceed 500 psi, unless approval is given by NMOCD.
8. Produced water will not be used during any part of the plugging operation.
9. Mud laden fluids must be placed between all cement plugs mixed at 25 sacks per 100 bbls of water.
10. All cement plugs will be a minimum of 100' in length or a minimum of 25 sacks of cement, whichever is greater. 50' of calculated cement excess required for inside casing plugs and 100% calculated cement excess required on outside casing plugs.
11. Class 'C' cement will be used above 7500 feet.
12. Class 'H' cement will be used below 7500 feet.
13. A cement plug is required to be set 50' above and 50' below, casing stubs, DV tools, attempted casing cut offs, cement tops outside casing, salt sections and anywhere the casing is perforated, these plugs require a 4 hour WOC and then will be tagged
14. All Casing Shoes Will Be Perforated 50' below shoe depth and Attempted to be Squeezed, cement needs to be 50' above and 50' Below Casing Shoe inside the Production Casing.
16. When setting the top out cement plug in production, intermediate and surface casing, wellbores should remain full at least 30 minutes after plugs are set
17. A CIBP is to be set within 100' of production perforations, capped with 100' of cement, WOC 4 hours and tag.
18. A CIBP with 35' of cement may be used in lieu of the 100' plug if set with a bailer. This plug will be placed within 100' of the top perforation, (WOC 4 hrs and tag).

19. No more than 3000' is allowed between cement plugs in cased hole and 2000' in open hole.
20. Some of the Formations to be isolated with cement plugs are: These plugs to be set to isolate formation tops
- A) Fusselman
  - B) Devonian
  - C) Morrow
  - D) Wolfcamp
  - E) Bone Springs
  - F) Delaware
  - G) Any salt sections
  - H) Abo
  - I) Glorieta
  - J) Yates.
  - K) Potash---(In the R-111-P Area (Potash Mine Area),  
A solid cement plug must be set across the salt section. Fluid used to mix the cement shall be saturated with the salts that are common to the section penetrated and in suitable proportions, not more than 3% calcium chloride (by weight of cement) will be considered the desired mixture whenever possible, WOC 4 hours and tag, this plug will be 50' below the bottom and 50' above the top of the Formation.
21. If cement does not exist behind casing strings at recommended formation depths, the casing can be cut and pulled with plugs set at recommended depths. If casing is not pulled, perforations will be shot and cement squeezed behind casing, WOC and tagged. These plugs will be set 50' below formation bottom to 50' above formation top inside the casing.

### **DRY HOLE MARKER REQUIREMENTS**

The operator shall mark the exact location of the plugged and abandoned well with a steel marker not less than four inches in diameter, 3' below ground level with a plate of at least ¼" welded to the top of the casing and the dry hole marker welded on the plate with the following information welded on the dry hole marker:

1. Operator name
2. Lease and Well Number
3. API Number
4. Unit letter
5. Quarter Section (feet from the North, South, East or West)
6. Section, Township and Range
7. Plugging Date
8. County

### **SPECIAL CASES -----AGRICULTURE OR PRARIE CHICKEN BREEDING AREAS**

In these areas, a below ground marker is required with all pertinent information mentioned above on a plate, set 3' below ground level, a picture of the plate will be supplied to NMOCD for record, the exact location of the marker (longitude and latitude by GPS) will be provided to NMOCD (We typically require a current survey to verify the GPS)

### **SITE REMEDIATION DUE WITHIN ONE YEAR OF WELL PLUGGING COMPLETION**

## Plugging Plan – Lovington Paddock Unit #031

API: 30-025-03775

## Note:

- Injection well with IPC tubing installed

## Proposed procedure:

1. Move in P&A spread, N/U BOPE and pressure test same to 250 psi low for 5 minutes / 2500 psi high for 10 minutes.
2. Conduct bubble tests on all annuli. Adjust forward plan as necessary to perforate and squeeze any intervals listed below with the approval of NMOCD.
3. Pressure test tubing string to 1000 psi. If tubing tests, Sunset Well Services has frequently opted to bullhead cement below packer to assist in killing well. If this is selected as path forward, bullhead agreed upon cement volume per NMOCD. WOC. Plan to spot cement plug #1 per C-103 above the packer once released. If tubing does not test, see next job steps.
4. [Option if tubing does not test] Plan to set mechanical plug inside packer profile to form mechanical barrier at 6006'.
  - a. Attempt to run gauge ring through IPC tubing to 6006'
  - b. If successful, plan to set cast iron tubing plug adjacent to packer
  - c. If unsuccessful, plan to release from packer and TOH with IPC tubing. Run gauge ring then CIBP and set above packer left in hole.
5. TIH with pressure tested workstring to tag mechanical barrier
6. Spot 25 sacks Class C cement from 6006' to 5761'.
7. Spot 31 sacks Class C cement from 4626' to 4325'.
8. Perforate & squeeze 36 sacks Class C cement from 3930' to 3780'.
9. Perforate & squeeze 48 sacks Class C cement from 3366' to 3166'.
10. Perforate & squeeze 118 sacks Class C cement from 2146' to 1646'. WOC, tag, pressure test.
11. Conduct 30 minute bubble test in all annuli. Discuss contingency plan for additional perforation and squeezes or casing cut/pull. Confirm forward plan with NMOCD.
12. Once a passing bubble test is achieved, Perforate & squeeze 92 sacks Class C cement from 390' to 0'.
13. Confirm cement returns at surface
14. Rig down move off location

## Current Wellbore Diagram

Created:	<u>04/19/19</u>	By:	<u>                    </u>	Well #:	<u>31</u>	St. Lse:	<u>                    </u>
Updated:	<u>                    </u>	By:	<u>                    </u>	API	<u>30-025-03775</u>		
Lease:	<u>Lovington Paddock Unit</u>			Unit Ltr.:	<u>L</u>	Section:	<u>36</u>
Field:	<u>Lovington</u>			TSHP/Rng:	<u>                    </u>	<u>16S-36E</u>	
Surf. Loc.:	<u>1650 FSL &amp; 890 FWL</u>			Unit Ltr.:	<u>                    </u>	Section:	<u>                    </u>
Bot. Loc.:	<u>                    </u>			TSHP/Rng:	<u>                    </u>		
County:	<u>Lea</u>	St.:	<u>NM</u>	Directions:	<u>Buckeye, NM</u>		
Status:	<u>Active Injection Well</u>			Chevno:	<u>FA4922</u>		

## Surface Casing

Size: 13-3/8"  
 Wt., Grd.: 54#  
 Depth: 340  
 Sxs Cmt: 350  
 Circulate: Yes  
 TOC: Surface  
 Hole Size: 17-1/4"

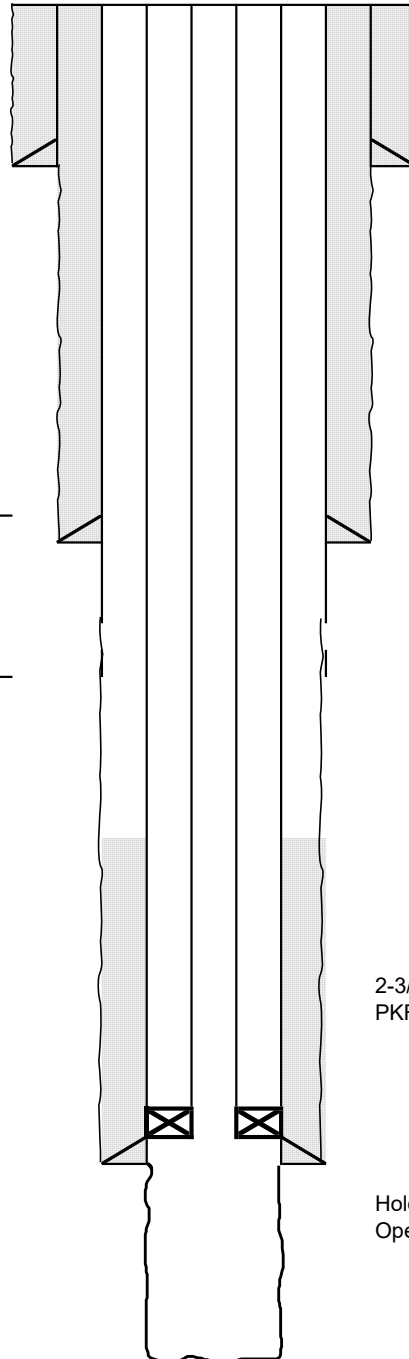
KB:                       
 DF: 3,845  
 GL:                       
 Ini. Spud: 12/16/53  
 Ini. Comp.: 01/13/54

## Intermediate Casing

Size: 8-5/8"  
 Wt., Grd.: 32#  
 Depth: 3316'  
 Sxs Cmt: 2300  
 Circulate: Yes  
 TOC: Surface  
 Hole Size: 11"

## Production Casing

Size: 5-1/2"  
 Wt., Grd.: 17/15.5#  
 Depth: 6080  
 Sxs Cmt: 400  
 Circulate: No  
 TOC: 4350 by TS  
 Hole Size: 7-7/8"



2-3/8" IPC Inj Tbg  
 PKR set @ 6006'

Hole Size: 4-3/4"  
 Open Hole: 6080' - 6295'

PBTD(est.):                       
 TD: 6,295

## Proposed Wellbore Diagram

Created: 04/19/19 By: \_\_\_\_\_  
 Updated: \_\_\_\_\_ By: \_\_\_\_\_  
 Lease: Lovington Paddock Unit  
 Field: Lovington  
 Surf. Loc.: 1650 FSL & 890 FWL  
 Bot. Loc.: \_\_\_\_\_  
 County: Lea St.: NM  
 Status: Active Injection Well

Well #: 31 St. Lse: \_\_\_\_\_  
 API: 30-025-03775  
 Unit Ltr.: L Section: 36  
 TSHP/Rng: 16S-36E  
 Unit Ltr.: \_\_\_\_\_ Section: \_\_\_\_\_  
 TSHP/Rng: \_\_\_\_\_  
 Directions: Buckeye, NM  
 Chevno: FA4922

## Surface Casing

Size: 13-3/8"  
 Wt., Grd.: 54#  
 Depth: 340  
 Sxs Cmt: 350  
 Circulate: Yes  
 TOC: Surface  
 Hole Size: 17-1/4"

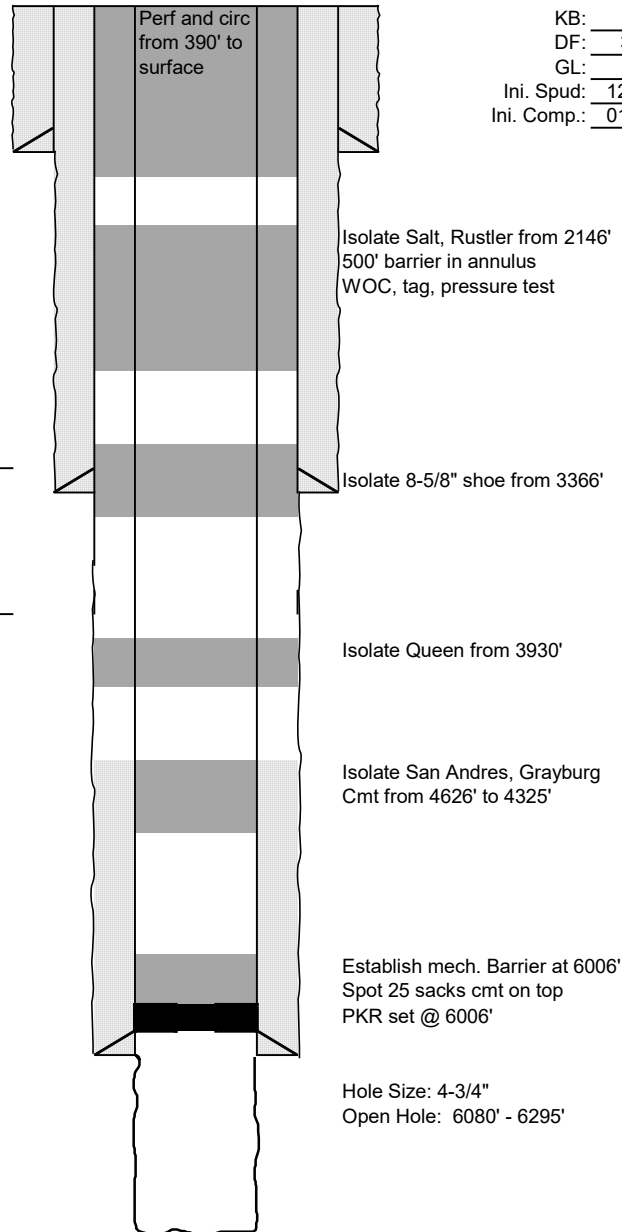
KB: \_\_\_\_\_  
 DF: 3,845  
 GL: \_\_\_\_\_  
 Ini. Spud: 12/16/53  
 Ini. Comp.: 01/13/54

## Intermediate Casing

Size: 8-5/8"  
 Wt., Grd.: 32#  
 Depth: 3316'  
 Sxs Cmt: 2300  
 Circulate: Yes  
 TOC: Surface  
 Hole Size: 11"

## Production Casing

Size: 5-1/2"  
 Wt., Grd.: 17/15.5#  
 Depth: 6080  
 Sxs Cmt: 400  
 Circulate: No  
 TOC: 4350 by TS  
 Hole Size: 7-7/8"



PBTD(est.): \_\_\_\_\_  
 TD: 6,295

**District I**  
1625 N. French Dr., Hobbs, NM 88240  
Phone:(575) 393-6161 Fax:(575) 393-0720  
**District II**  
811 S. First St., Artesia, NM 88210  
Phone:(575) 748-1283 Fax:(575) 748-9720  
**District III**  
1000 Rio Brazos Rd., Aztec, NM 87410  
Phone:(505) 334-6178 Fax:(505) 334-6170  
**District IV**  
1220 S. St Francis Dr., Santa Fe, NM 87505  
Phone:(505) 476-3470 Fax:(505) 476-3462

State of New Mexico  
Energy, Minerals and Natural Resources  
Oil Conservation Division  
1220 S. St Francis Dr.  
Santa Fe, NM 87505

COMMENTS  
  
Action 133298

COMMENTS

Operator: CHEVRON U S A INC 6301 Deauville Blvd Midland, TX 79706	OGRID: 4323
	Action Number: 133298
	Action Type: [C-103] NOI Plug & Abandon (C-103F)

COMMENTS

Created By	Comment	Comment Date
plmartinez	DATA ENTRY PM	10/24/2022

**District I**  
1625 N. French Dr., Hobbs, NM 88240  
Phone:(575) 393-6161 Fax:(575) 393-0720  
**District II**  
811 S. First St., Artesia, NM 88210  
Phone:(575) 748-1283 Fax:(575) 748-9720  
**District III**  
1000 Rio Brazos Rd., Aztec, NM 87410  
Phone:(505) 334-6178 Fax:(505) 334-6170  
**District IV**  
1220 S. St Francis Dr., Santa Fe, NM 87505  
Phone:(505) 476-3470 Fax:(505) 476-3462

**State of New Mexico**  
**Energy, Minerals and Natural Resources**  
**Oil Conservation Division**  
**1220 S. St Francis Dr.**  
**Santa Fe, NM 87505**

CONDITIONS

Action 133298

**CONDITIONS**

Operator: CHEVRON U S A INC 6301 Deauville Blvd Midland, TX 79706	OGRID: 4323
	Action Number: 133298
	Action Type: [C-103] NOI Plug & Abandon (C-103F)

**CONDITIONS**

Created By	Condition	Condition Date
kfortner	See attached COA	10/21/2022