

District I (575) 393-6161  
 1625 N. French Dr., Hobbs, NM 88240  
 District II (575) 748-1283  
 811 S. First St., Artesia, NM 88210  
 District III (505) 334-6178  
 1000 Rio Brazos Road, Aztec, NM 87410  
 District IV (505) 827-8198  
 1220 S. St. Francis Dr., Santa Fe, NM 87505

State of New Mexico  
 Energy Minerals and Natural Resources

Oil Conservation Division  
 1220 South St. Francis Dr.  
 Santa Fe, NM 87505

Form C-106  
 Revised August 1, 2011

**C106-910**

ACT Permit No. \_\_\_\_\_

**NOTICE OF INTENTION TO UTILIZE AUTOMATIC CUSTODY TRANSFER EQUIPMENT**

Operator Enduring Resources IV, LLC

Address 200 Energy Court Farmington, NM 87401 County San Juan

Lease(s) to be served by this ACT Unit: NMMN-136328A (Rodeo Unit)

Pool(s) to be served by this ACT Unit Basin Mancos (97232)

Location of ACT System: Unit D Section 31 Township 23N Range 8W

Order No. authorizing commingling between leases if more than one lease is to be served by this system.

R-14313 Date 3/24/2017

Order No. authorizing commingling between pools if more than one pool is to be served by this system

N/A Date \_\_\_\_\_

Authorized transporter of oil from this system Whiptail Midstream, LLC

Transporter's address 15 West 6th Street, Tulsa, OK 74119

Maximum expected daily through-put for this system: 2,000 BBL/Day

If system fails to transfer oil due to malfunction or otherwise, waste by overflow will be averted by:

CHECK ONE: A. ☐ Automatic shut-down facilities B. ☒ Providing adequate available capacity to receive production  
 as required by 19.15.18.15.C(8) NMAC during maximum unattended time of lease operation  
 19.15.18.15.C(9) NMAC

If "A" above is checked, will flowing wells be shut-in at the header manifold or at the wellhead?

NA Maximum well-head shut-in pressure N/A

If "B" above is checked, how much storage capacity is available above the normal high working level of the

surge tank 100 BBLS.

What is the normal maximum unattended time of lease operation? Sixteen (16) Hours.

What device will be used for measuring oil in this ACT unit?

CHECK ONE: ☐ Positive displacement meter ☐ Weir-type measuring vessel  
☐ Positive volume metering chamber ☒ Other; describe Coriolis Meter

Remarks: This LACT will be selling to pipeline.

**OPERATOR:**

I hereby certify above information is true and complete to best of my knowledge and subject ACT system will be installed and operated in accordance with Rule 19.15.18.15 NMAC. Approval of this Form C-106 does not eliminate necessity of an approved C-104 prior to running any oil or gas from this system.

Signature Heather Huntington

Printed Name & Title Heather Huntington

E-mail Address hhuntington@enduringresources.com

Date 10/7/22 Telephone (505) 636-9751

**OIL CONSERVATION DIVISION**

Approved by: Dean R McClure

Title: Petroleum Engineer

Date: 10/28/2022

**INSTRUCTIONS:** Submit one copy of Form C-106 with following attachments to appropriate district office.

- 1) Lease plat showing all wells which will be produced in ACT system.
- 2) Schematic diagram of battery and ACT equipment showing all major components and means employed to prove accuracy of measuring device.
- 3) Letter from transporter agreeing to utilization of ACT system as shown on schematic diagram.

**NOTICE OF INTENTION TO UTILIZE AUTOMATIC CUSTODY TRANSFER EQUIPMENT  
RODEO UNIT 494H/495H/496H PIPELINE LACT UNIT  
WELLS TO BE SERVED BY PIPELINE LACT UNIT:**

- **RODEO UNIT 494H/ API # 30-045-35923/ UNIT D Sec. 31, T23N, R8W, NMPM**
- **RODEO UNIT 495H/ API # 30-045-38170/ UNIT D Sec. 31, T23N, R8W, NMPM**
- **RODEO UNIT 496H/ API # 30-045-38169/ UNIT D Sec. 31, T23N, R8W, NMPM**

**19.15.18.15 AUTOMATIC CUSTODY TRANSFER EQUIPMENT:**

**A.** Oil shall be received and measured in facilities of an approved design. The facilities shall permit the testing of each well at reasonable intervals and may be comprised of manually gauged, closed stock tanks for which the operator of the ACT system has prepared proper strapping tables, or of ACT equipment. The division shall permit ACT equipment's use only after the operator complies with the following. The operator shall file with the division form C-106 and receive approval for use of the ACT equipment prior to transferring oil through the ACT system. The carrier shall not accept delivery of oil through the ACT system until the division has approved form C-106.

- ***Summary is attached to Form C-106 Notice of Intent to Utilize Automatic Custody Transfer Equipment***

**B.** The operator of the ACT system shall submit form C-106 to the appropriate division district office, which is accompanied by the following:

- (1) plat of the lease showing all wells that the any well operator will produce into the ACT system;
  - ***Attached as part of Form C-106 Notice of Intent***
- (2) schematic diagram of the ACT equipment, showing on the diagram all major components such as surge tanks and their capacity, extra storage tanks and their capacity, transfer pumps, monitors, reroute valves, treaters, samplers, strainers, air and gas eliminators, back pressure valves and metering devices (indicating type and capacity, *i.e.* whether automatic measuring tank, positive volume metering chamber, weir-type measuring vessel or positive displacement meter); the schematic diagram shall also show means employed to prove the measuring device's accuracy; and

- ***Attached as part of Form C-106 Notice of Intent***
- (3) letter from transporter agreeing to utilization of ACT system as shown on schematic diagram.
- ***Attached as part of Form C-106 Notice of Intent***

**C.** The division shall not approve form C-106 unless the operator of the ACT system will install and operate the ACT system in compliance with the following requirements.

- (1) Provision is made for accurate determination and recording of uncorrected volume and applicable temperature, or of temperature corrected volume. The system's overall accuracy shall equal or surpass manual methods.

- ***The LACT system is more accurate when compared to a manual tank sale. It is proved per BLM Onshore Order #4 Measurement of Oil and API MPMS Chapter 4 Proving Systems; with a volumetric prover that meets the requirements set forth in Onshore Order #4. The LACT also has a temperature RTD which will be calibrated semi-annually, unless more frequent verification is requested by the division.***

- (2) Provision is made for representative sampling of the oil transferred for determination of API gravity and BS&W content.

- ***The LACT is equipped with a flow proportional sampler (sample probe and actuated valve). The sampled fluid is stored in a sealed cylinder that is used for API gravity and S&W determination.***

- (3) Provision is made if required by either the oil's producer or the transporter to give adequate assurance that the ACT system runs only merchantable oil.

- ***The LACT is equipped with a water cut analyzer that communicates with the flow computer. When the S&W set point is reached the divert valve will engage sending non-merchantable oil to a divert tank. The set point can be adjusted in the flow computer but only if agreed upon by both shipper and producer.***

- (4) Provision is made for set-stop counters to stop the flow of oil through the ACT system at or prior to the time the allowable has been run. Counters shall provide non-reset totalizers that are visible for inspection at all times.

- ***The Coriolis meter has non-resettable totalizer which is always visibly available on the LCD display.***
- (5) Necessary controls and equipment are enclosed and sealed, or otherwise arranged to provide assurance against, or evidence of, accidental or purposeful mismeasurement resulting from tampering.
  - ***Required ports are sealed and tracked in the seal log.***
- (6) The ACT system's components are properly sized to ensure operation within the range of their established ratings. All system components that require periodic calibration or inspection for proof of continued accuracy are readily accessible; the frequency and methods of the calibration or inspection shall be as set forth in Paragraph (12) of Subsection C of 19.15.18.15 NMAC.
  - ***The Coriolis is proved per BLM Onshore Order #4 Measurement of Oil and API MPMS Chapter 4 Proving Systems; with a volumetric prover that meets the requirements set forth in Onshore Order #4. The prover is NIST traceable and water drawn on a bi-annual basis. Proving will be consistent with Onshore Order #4, unless a variance is granted by the Division. NMOCD representatives are sent the schedule to witness if desired. The temperature transmitter is verified on a semi-annual basis, unless more frequent verification is requested by the Division. The water cut analyzer is calibrated as needed.***
- (7) The control and recording system includes adequate fail-safe features that provide assurance against mismeasurement in the event of power failure, or the failure of the ACT system's component parts.
  - ***In the event of power failure, the divert valve mechanically goes to "failed state" and no longer sales oil but only sends it to the divert tank.***
  - ***All of the historized volume data is stored in flow computer memory with battery backup and is also transmitted by SCADA, multiple times a day, to an office server. So even during a power failure no oil volume is lost.***
  - ***In the event of a malfunction, the LACT unit is programmed to shut off and divert valve is forced to close and no longer sales oil but only sends it to the divert tank. The malfunction is also logged by the flow computer.***
- (8) The ACT system and allied facilities include fail-safe equipment as may be necessary, including high level switches in the surge tank or overflow storage tank that, in the event of power failure or malfunction of the ACT or other equipment, will shut down artificially lifted wells connected to the ACT system and will shut in flowing wells at the well-head or at the header manifold, in which latter case the operator of the ACT system shall pressure test all flowlines to at least 1½ times the maximum well-head shut-in pressure prior to the ACT system's initial use and every two years thereafter.
  - ***Hi level switches are in place and will shut the well in at the inlet to the production unit in the event of a full tank. Flow lines were tested to 1 ½ times shut in pressure at initial construction. Testing will commence every two years to ensure piping integrity.***
- (9) As an alternative to the requirements of Paragraph (8) of Subsection C of 19.15.18.15 NMAC the producer shall provide and at all times maintain a minimum of available storage capacity above the normal high working level of the surge tank to receive and hold the amount of oil that may be produced during maximum unattended time of lease operation.
  - ***N/A***
- (10) In all ACT systems employing automatic measuring tanks, weir-type measuring vessels, positive volume metering chambers or any other volume measuring container, the container and allied components shall be properly calibrated prior to initial use and shall be operated, maintained and inspected as necessary to ensure against incrustation, changes in clingage factors, valve leakage or other leakage and improper action of floats, level detectors, etc.
  - ***N/A – Coriolis Meter***

(11) In ACT systems employing positive displacement meters, the meter and allied components shall be properly calibrated prior to initial use and shall be operated, maintained and inspected as necessary to ensure against oil mismeasurement.

- ***The Coriolis is proved per BLM Onshore Order #4 Measurement of Oil and API MPMS Chapter 4 Proving Systems; with a volumetric prover that meets the requirements set forth in Onshore***

***Order #4. The prover is NIST traceable and water drawn on a bi-annual basis. Monthly proving will continue per the rule, unless a variance is granted by the Division. NMOCD representatives are sent the schedule to witness if desired. The temperature transmitter is verified on a semi-annual basis, unless more frequent verification is requested by the Division.***

(12) The operator of the ACT system shall check the measuring and recording devices of ACT systems for accuracy at least once each month unless it has obtained an exception to such determination from the division. Where applicable, the operator of the ACT system shall use API standard 1101, Measurement of Petroleum Hydrocarbons by Positive Displacement Meter. Meters may be proved against master meters, portable prover tanks or prover tanks permanently installed on the lease. If the operator of the ACT system uses permanently installed prover tanks, the distance between the opening and closing levels and the provision for determining the opening and closing readings shall be sufficient to detect variations of 5/100 of one percent. The operator of the ACT system shall file reports of determination on the division form entitled "meter test report" or on another acceptable form in duplicate with the appropriate division district office.

- ***The Coriolis is proved per BLM Onshore Order #4 Measurement of Oil and API MPMS Chapter 4 Proving Systems; with a volumetric prover that meets the requirements set forth in Onshore Order #4. The prover is NIST traceable and water drawn on a bi-annual basis. Monthly proving will continue per the rule, unless a variance is granted by the Division. NMOCD representatives are sent the schedule to witness if desired. The temperature transmitter is verified on a semi-annual basis, unless more frequent verification is requested by the Division.***

(13) To obtain an exception to the requirement in Paragraph (12) of Subsection C of 19.15.18.15 NMAC that all measuring and recording devices be checked for accuracy once each month, either the producer or transporter may file a request with the director setting forth facts pertinent to the exception. The application shall include a history of the average factors previously obtained, both tabulated and plotted on a graph of factors versus time, showing that the particular installation has experienced no erratic drift. The applicant shall also furnish evidence that the other interested party has agreed to the exception. The director may then set the frequency for determination of the system's accuracy at the interval which the director deems prudent.

- ***N/A***

**D.** The division may revoke its approval of an ACT system's form C-106 if the system's operator fails to operate it in compliance with 19.15.18.15 NMAC.

District II  
811 S. First Street, Artesia, NM 88210  
Phone: (575) 748-1283 Fax: (575) 748-9720District III  
1000 Rio Brazos Road, Aztec, NM 87410  
Phone: (505) 334-6178 Fax: (505) 334-6170District IV  
1220 S. St. Francis Drive, Santa Fe, NM 87505  
Phone: (505) 476-3460 Fax: (505) 476-3462Submit one copy to  
Appropriate District OfficeOIL CONSERVATION DIVISION  
1220 South St. Francis Drive  
Santa Fe, NM 87505☐ AMENDED REPORT

## WELL LOCATION AND ACREAGE DEDICATION PLAT

<sup>1</sup> API Number <b>30-045-35923</b>		<sup>2</sup> Pool Code 97232		<sup>3</sup> Pool Name BASIN MANCOS	
<sup>4</sup> Property Code 321253		<sup>5</sup> Property Name RODEO UNIT			<sup>6</sup> Well Number 494H
<sup>7</sup> OGRID No. 372286		<sup>8</sup> Operator Name ENDURING RESOURCES, LLC			<sup>9</sup> Elevation 6680'

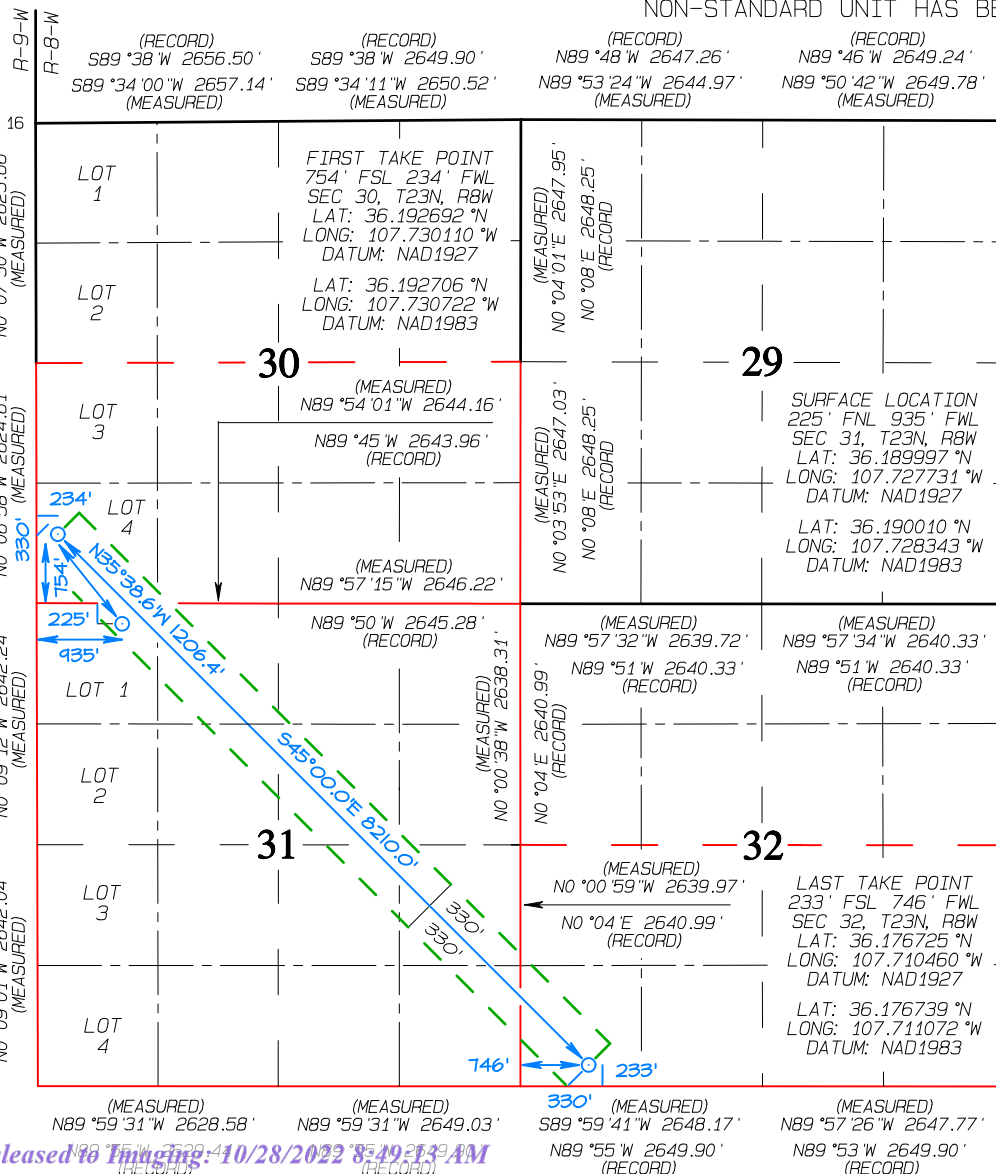
<sup>10</sup> Surface Location

UL or lot no.	Section	Township	Range	Lot Idn	Feet from the	North/South line	Feet from the	East/West line	County
D	31	23N	8W	1	225	NORTH	935	WEST	SAN JUAN

<sup>11</sup> Bottom Hole Location If Different From Surface

UL or lot no.	Section	Township	Range	Lot Idn	Feet from the	North/South line	Feet from the	East/West line	County
M	32	23N	8W		233	SOUTH	746	WEST	SAN JUAN

<sup>12</sup> Dedicated Acres 1283.63		S/2 - Section 30 Entire Section 31 S/2 - Section 32		<sup>13</sup> Joint or Infill	<sup>14</sup> Consolidation Code	<sup>15</sup> Order No. R-14313
--	--	---	--	-------------------------------	----------------------------------	------------------------------------

NO ALLOWABLE WILL BE ASSIGNED TO THIS COMPLETION  
UNTIL ALL INTERESTS HAVE BEEN CONSOLIDATED OR A  
NON-STANDARD UNIT HAS BEEN APPROVED BY THE DIVISION<sup>17</sup> OPERATOR CERTIFICATION

I hereby certify that the information contained herein is true and complete to the best of my knowledge and belief, and that this organization either owns a working interest or unleased mineral interest in the land including the proposed bottom-hole location or has a right to drill this well at this location pursuant to a contract with an owner of such a mineral or working interest, or to a voluntary pooling agreement or a compulsory pooling order heretofore entered by the division.

Signature Heather Huntington Date 10/4/22  
 Printed Name Heather Huntington  
 E-mail Address hhuntington@enduringresources.com

<sup>18</sup> SURVEYOR CERTIFICATION

I hereby certify that the well location shown on this plat was plotted from field notes of actual surveys made by me or under my supervision, and that the same is true and correct to the best of my belief.

Date Revised: FEBRUARY 28, 2022  
 Date of Survey: APRIL 12, 2016

Signature and Seal of Professional Surveyor



**JASON C. EDWARDS**  
 Certificate Number 15269



District II  
811 S. First Street, Artesia, NM 88210  
Phone: (575) 393-6161 Fax: (575) 393-0720  
District III  
1000 Rio Brazos Road, Aztec, NM 87410  
Phone: (505) 334-6178 Fax: (505) 334-6170  
District IV  
1220 S. St. Francis Drive, Santa Fe, NM 87505  
Phone: (505) 476-3460 Fax: (505) 476-3462

Submit one copy to  
Appropriate District Office

**OIL CONSERVATION DIVISION**  
**1220 South St. Francis Drive**  
**Santa Fe, NM 87505**

☐ AMENDED REPORT

**WELL LOCATION AND ACREAGE DEDICATION PLAT**

<sup>1</sup> API Number <b>30-045-38170</b>	<sup>2</sup> Pool Code <b>97232</b>	<sup>3</sup> Pool Name <b>BASIN MANCOS</b>
<sup>4</sup> Property Code <b>321253</b>	<sup>5</sup> Property Name <b>RODEO UNIT</b>	<sup>6</sup> Well Number <b>495H</b>
<sup>7</sup> OGRID No. <b>372286</b>	<sup>8</sup> Operator Name <b>ENDURING RESOURCES, LLC</b>	<sup>9</sup> Elevation <b>6680'</b>

<sup>10</sup> Surface Location

UL or lot no.	Section	Township	Range	Lot Idn	Feet from the	North/South line	Feet from the	East/West line	County
D	31	23N	8W	1	225	NORTH	895	WEST	SAN JUAN

<sup>11</sup> Bottom Hole Location If Different From Surface

UL or lot no.	Section	Township	Range	Lot Idn	Feet from the	North/South line	Feet from the	East/West line	County
P	31	23N	8W		233	SOUTH	950	EAST	SAN JUAN

<sup>12</sup> Dedicated Acres <b>961.48</b>	<b>Entire Section 31, T23N R8W N/2 - Section 36, T23N R9W</b>	<sup>13</sup> Joint or Infill	<sup>14</sup> Consolidation Code	<sup>15</sup> Order No. <b>R-14313</b>
--	---	-------------------------------	----------------------------------	---

NO ALLOWABLE WILL BE ASSIGNED TO THIS COMPLETION UNTIL ALL INTERESTS HAVE BEEN CONSOLIDATED OR A NON-STANDARD UNIT HAS BEEN APPROVED BY THE DIVISION

FIRST TAKE POINT  
234' FNL 478' FEL  
SEC 36, T23N, R9W  
LAT: 36.189983°N  
LONG: 107.732519°W  
DATUM: NAD1927

LAT: 36.189997°N  
LONG: 107.733132°W  
DATUM: NAD1983

SURFACE LOCATION  
225' FNL 895' FWL  
SEC 31, T23N, R8W  
LAT: 36.189997°N  
LONG: 107.727866°W  
DATUM: NAD1927

LAT: 36.190011°N  
LONG: 107.728479°W  
DATUM: NAD1983

LAST TAKE POINT  
233' FSL 950' FEL  
SEC 31, T23N, R8W  
LAT: 36.176729°N  
LONG: 107.716207°W  
DATUM: NAD1927

LAT: 36.176743°N  
LONG: 107.716819°W  
DATUM: NAD1983

<sup>17</sup> OPERATOR CERTIFICATION  
I hereby certify that the information contained herein is true and complete to the best of my knowledge and belief, and that this organization either owns a working interest or unleased mineral interest in the land including the proposed bottom-hole location or has a right to drill this well at this location pursuant to a contract with an owner of such a mineral or working interest, or to a voluntary pooling agreement or a compulsory pooling order heretofore entered by the division.

*Heather Huntington* 10/4/22  
Signature Date  
**Heather Huntington**  
Printed Name  
hhuntington@enduringresources.com  
E-mail Address

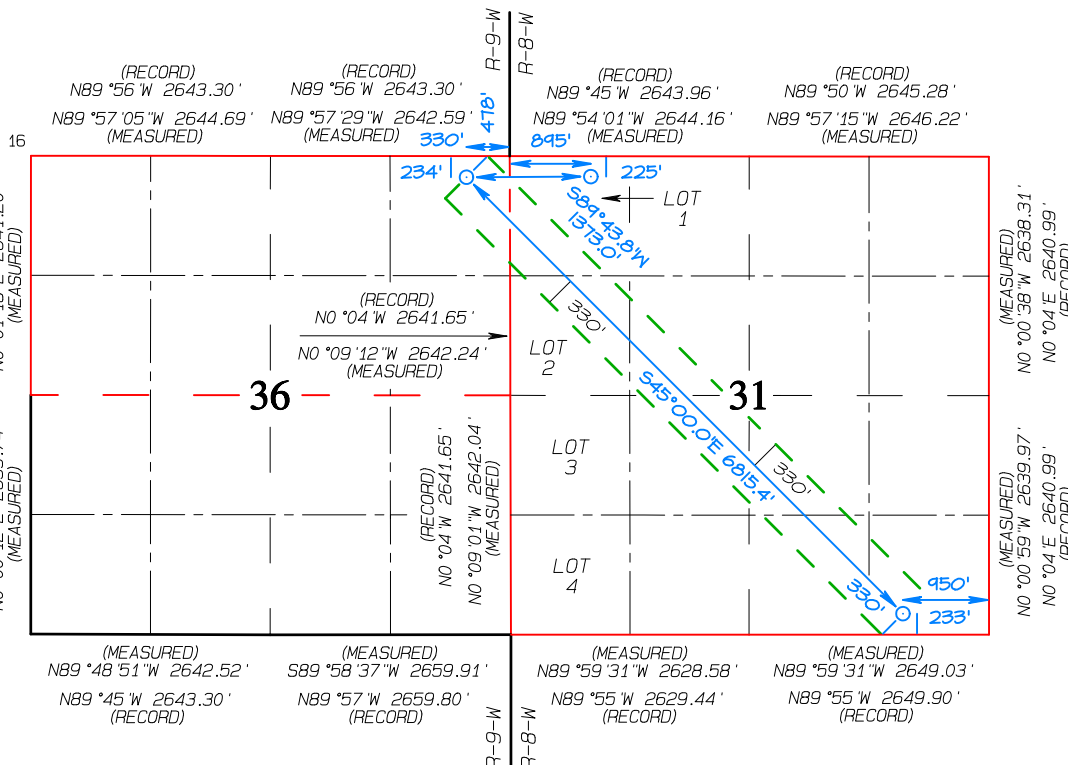
<sup>18</sup> SURVEYOR CERTIFICATION  
I hereby certify that the well location shown on this plat was plotted from field notes of actual surveys made by me or under my supervision, and that the same is true and correct to the best of my belief.

Date Revised: MARCH 1, 2022  
Date of Survey: APRIL 12, 2016

Signature and Seal of Professional Surveyor



**JASON C. EDWARDS**  
Certificate Number 15269



District I  
Phone: (575) 393-6161 Fax: (575) 393-0720  
District II  
811 S. First Street, Artesia, NM 88210  
Phone: (575) 748-1263 Fax: (575) 748-9720  
District III  
1000 Rio Brazos Road, Aztec, NM 87410  
Phone: (505) 334-6178 Fax: (505) 334-6170  
District IV  
1220 S. St. Francis Drive, Santa Fe, NM 87505  
Phone: (505) 476-3460 Fax: (505) 476-3462

**OIL CONSERVATION DIVISION**  
1220 South St. Francis Drive  
Santa Fe, NM 87505

Submit one copy to  
Appropriate District Office

☐ AMENDED REPORT

**WELL LOCATION AND ACREAGE DEDICATION PLAT**

<sup>1</sup> API Number <b>30-045-38169</b>	<sup>2</sup> Pool Code <b>97232</b>	<sup>3</sup> Pool Name <b>BASIN MANCOS</b>
<sup>4</sup> Property Code <b>321253</b>	<sup>5</sup> Property Name <b>RODEO UNIT</b>	<sup>6</sup> Well Number <b>496H</b>
<sup>7</sup> GRID No. <b>372286</b>	<sup>8</sup> Operator Name <b>ENDURING RESOURCES, LLC</b>	<sup>9</sup> Elevation <b>6680'</b>

**<sup>10</sup> Surface Location**

UL or lot no.	Section	Township	Range	Lot Idn	Feet from the	North/South line	Feet from the	East/West line	County
<b>0</b>	<b>31</b>	<b>23N</b>	<b>8W</b>	<b>1</b>	<b>225</b>	<b>NORTH</b>	<b>855</b>	<b>WEST</b>	<b>SAN JUAN</b>

**<sup>11</sup> Bottom Hole Location If Different From Surface**

UL or lot no.	Section	Township	Range	Lot Idn	Feet from the	North/South line	Feet from the	East/West line	County
<b>0</b>	<b>31</b>	<b>23N</b>	<b>8W</b>		<b>330</b>	<b>SOUTH</b>	<b>1895</b>	<b>EAST</b>	<b>SAN JUAN</b>

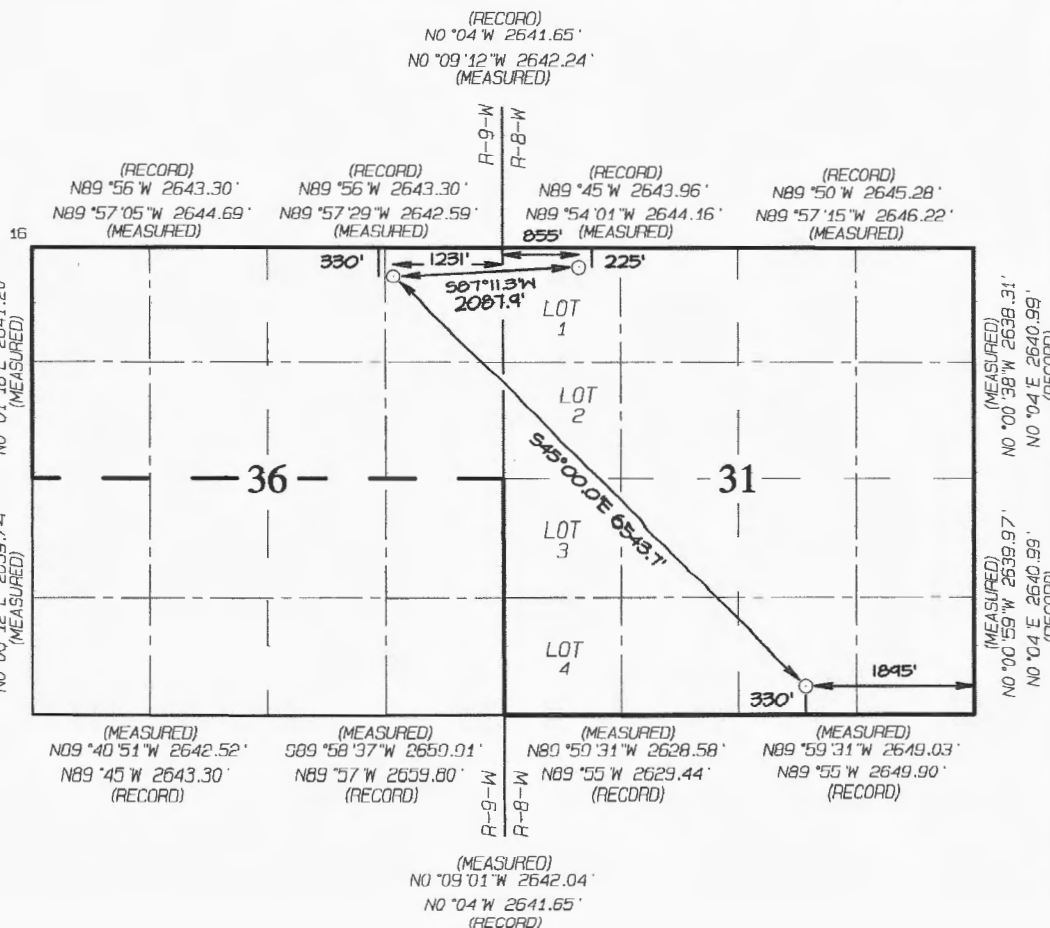
<sup>12</sup> Dedicated Acres <b>961.48</b>	<b>Entire Section 31, T23N R8W N/2 - Section 36, T23N R9W</b>	<sup>13</sup> Joint or Infill	<sup>14</sup> Consolidation Code	<sup>15</sup> Order No. <b>R-14313</b>
--	---	-------------------------------	----------------------------------	---

NO ALLOWABLE WILL BE ASSIGNED TO THIS COMPLETION UNTIL ALL INTERESTS HAVE BEEN CONSOLIDATED OR A NON-STANDARD UNIT HAS BEEN APPROVED BY THE DIVISION

POINT-OF-ENTRY  
330' FNL 1231' FEL  
SEC 36, T23N, R9W  
LAT: 36.189722°N  
LONG: 107.735069°W  
DATUM: NAD1927  
LAT: 36.189735°N  
LONG: 107.735682°W  
DATUM: NAD1983

SURFACE LOCATION  
225' FNL 855' FWL  
SEC 31, T23N, R8W  
LAT 36.189997°N  
LONG 107.728002°W  
DATUM NAD1927  
LAT 36.190011°N  
LONG 107.728614°W  
DATUM NAD1983

END-OF-LATERAL  
330' FSL 1895' FEL  
SEC 31, T23N, R8W  
LAT: 36.176996°N  
LONG: 107.719407°W  
DATUM: NAD1927  
LAT: 36.177010°N  
LONG: 107.720019°W  
DATUM: NAD1983



**<sup>17</sup> OPERATOR CERTIFICATION**

I hereby certify that the information contained herein is true and complete to the best of my knowledge and belief, and that this organization either owns a working interest or unleased mineral interest in the land including the proposed bottom-hole location or has a right to drill this well at this location pursuant to a contract with an owner of such a mineral or working interest, or to a voluntary pooling agreement or a compulsory pooling order heretofore entered by the division.

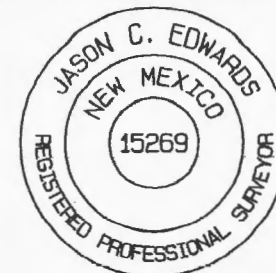
Signature Heather Huntington Date 10/4/2022  
Printed Name  
hhuntington@enduringresources.com  
E-mail Address

**<sup>18</sup> SURVEYOR CERTIFICATION**

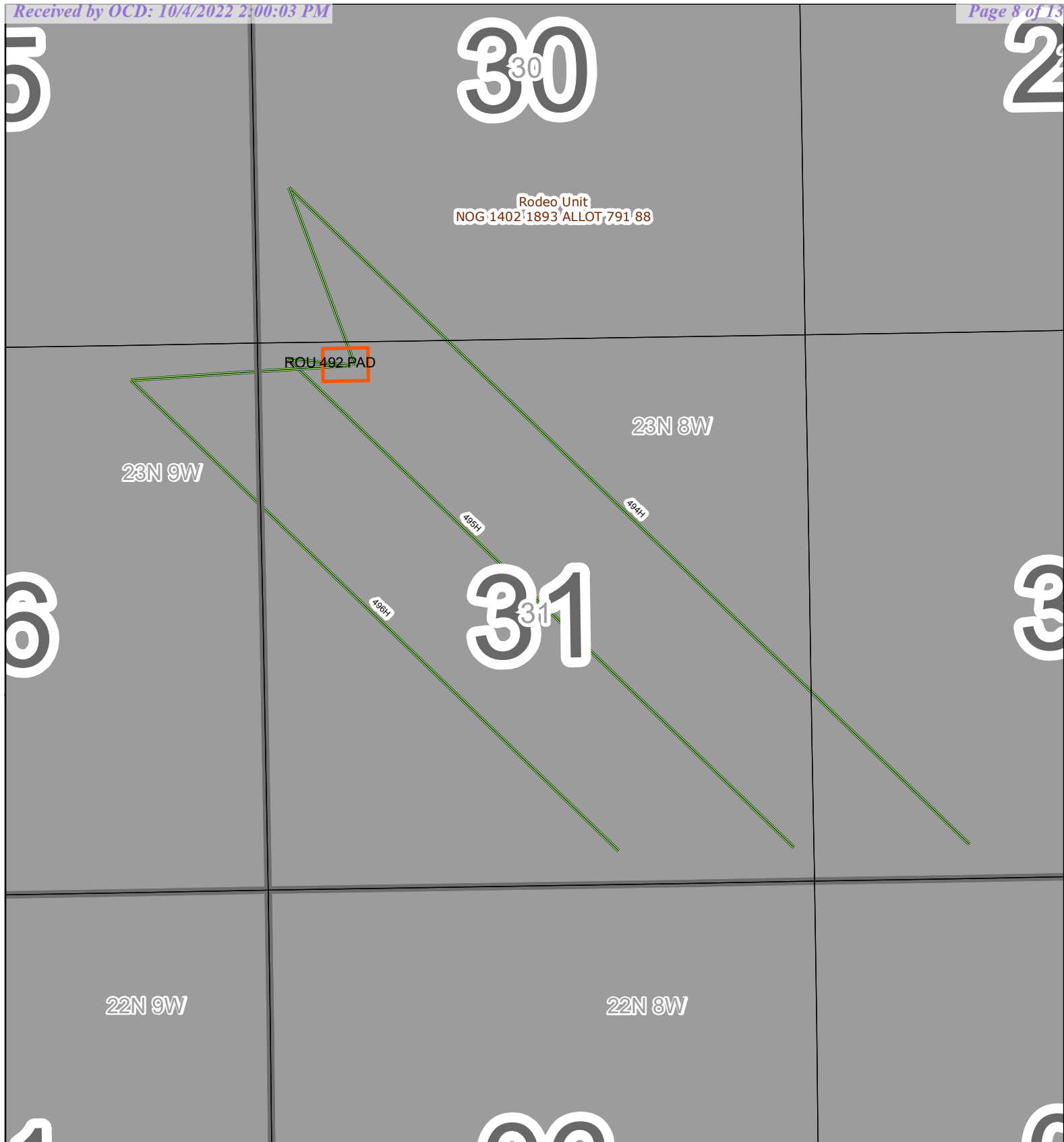
I hereby certify that the well location shown on this plat was plotted from field notes of actual surveys made by me or under my supervision, and that the same is true and correct to the best of my belief.

Date Revised: APRIL 22, 2019  
Date of Survey: APRIL 12, 2016

Signature and Seal of Professional Surveyor



**JASON C. EDWARDS**  
Certificate Number 15269



# ROU 494H Lease Plat Map

2022, Upper

PADS

Section

Township



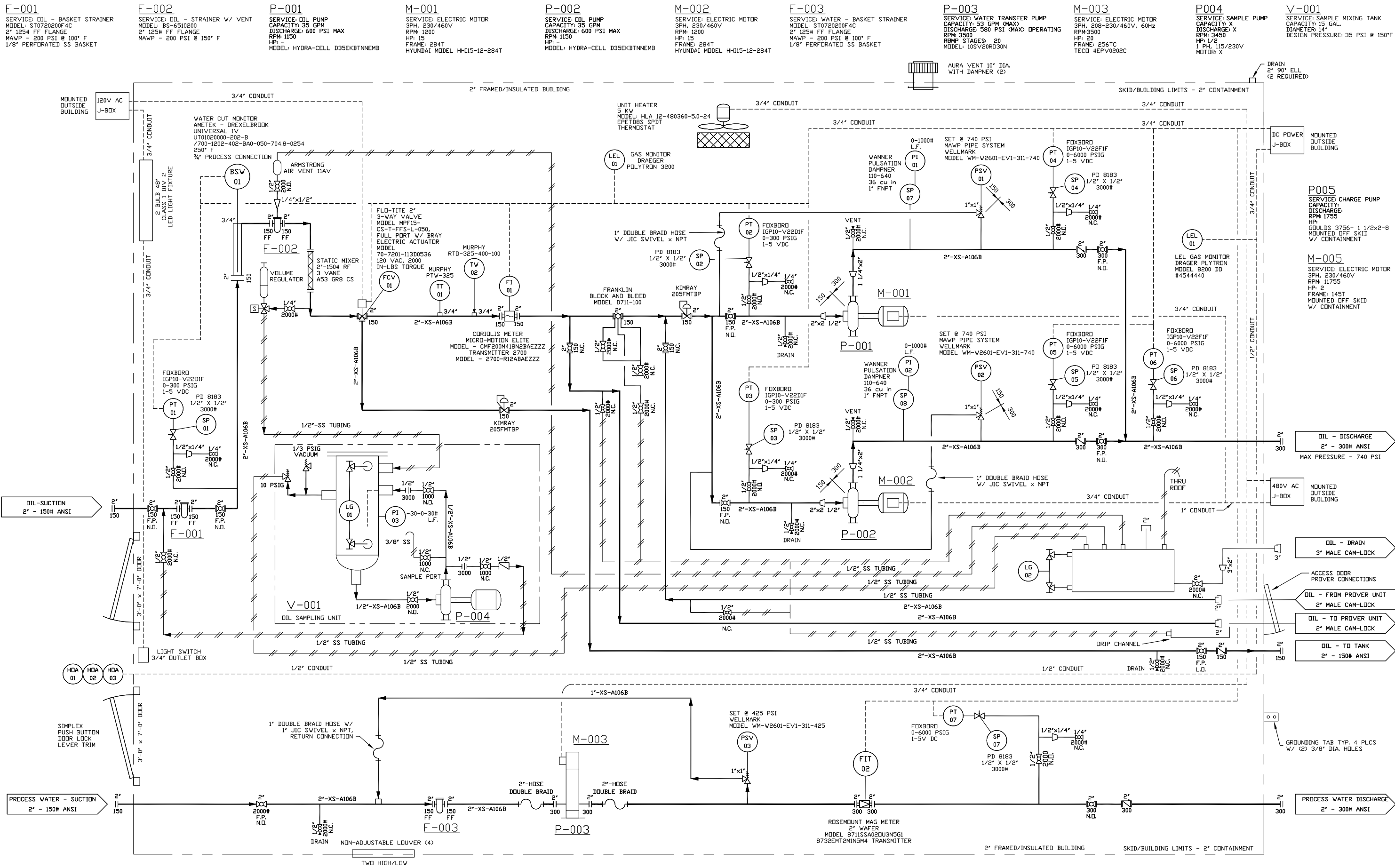
**ENDURING  
RESOURCES, LLC**

Data Source Statement:  
BLM-FFO, Enduring Resources GIS, ESRI Inc.,  
NCE Surveys, USGS



0 0.25 0.5 Miles





THIS DOCUMENT, WHETHER CONTAINING PATENTABLE OR NONPATENTABLE SUBJECT MATTER EMBODIES THE PROPRIETARY AND CONFIDENTIAL INFORMATION OF HENRY PRODUCTION INC. AND PUMPS AND SERVICE. IT IS LOANED IN CONFIDENCE WITH THE UNDERSTANDING THAT IT WILL NOT BE REPRODUCED, USED OR DISCLOSED FOR ANY PURPOSE EXCEPT THE LIMITED PURPOSE FOR WHICH IT IS LOANED. THIS DOCUMENT SHALL BE RETURNED TO HENRY PRODUCTION INC. OR PUMPS AND SERVICE UPON DEMAND.

8	OIL DRAIN SYSTEM ADDED	JKR	JKR	Drawn By:	JKR
7	OIL PSV OUTLET CHANGE	JKR	JKR	Date:	June 2015
6	SAMPLE POT UPDATE	JKR	JKR	Checked By:	JKR
5	UPDATE PART NUMBERS	JKR	JKR	Date:	Aug 1014
4	UPDATE	DT	JKR	Approved:	
3	REVISED CONDUIT SIZES	JKR	JKR	Date:	
2	CHGD LOW PRESS. TRANSMITTER	JKR	JKR		
REV.	DESCRIPTION	BY	CHKD.		

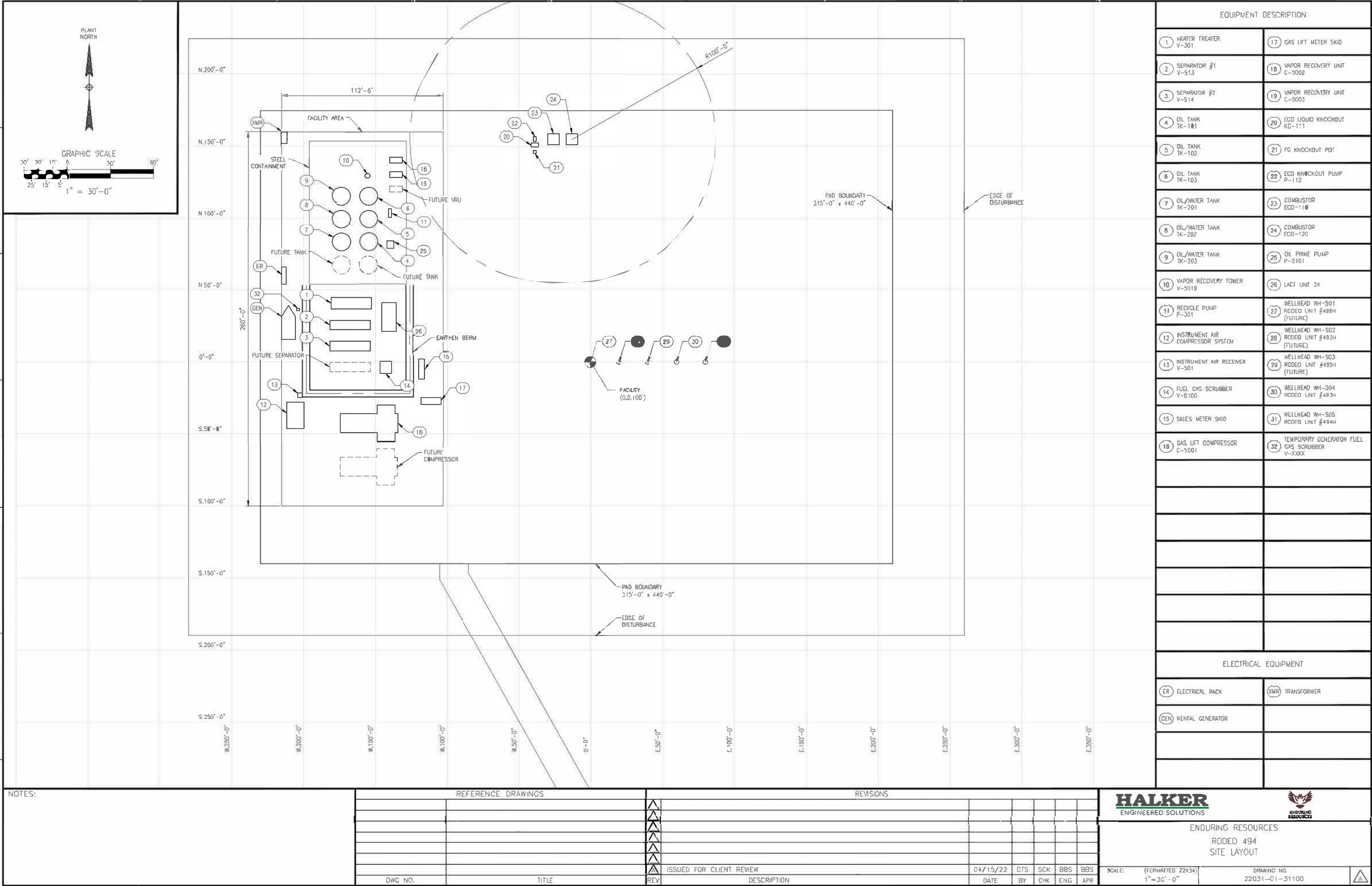
**HPI**  
GAS COMPRESSION

**PS**  
PUMPS & SERVICE

3440 Morning Star Drive, Farmington, NM 87401 (505) 327-0422

Drawing Name:	P & ID		
Project:	ENDURING TRIPLE PUMP TRANSFER - LACT		
Scale:	NTS	Drawing No.:	2222-06
		Rev.	8

FILE PATH: P:\ENDURING RESOURCES\22031-01-RODEO\_492\_MODEL\3-D-DESIGN\3-1-CIVIL\22031-01-31100 IMG BYDANISHRIDGE DATE: Apr 15, 2022 10:47am



**From:** [Mark Lokshin](#)  
**To:** [Heather Huntington](#)  
**Subject:** FW: Permission needed from Whiptail LACT unit on Rodeo 494H pad  
**Date:** Monday, October 3, 2022 11:55:02 AM

---

Heather

Please see below.

Thank you

Mark

---

**From:** Andy Pickle <[andy.pickle@whiptailmidstream.com](mailto:andy.pickle@whiptailmidstream.com)>  
**Sent:** Monday, October 3, 2022 11:39 AM  
**To:** Mark Lokshin <[MLokshin@enduringresources.com](mailto:MLokshin@enduringresources.com)>  
**Subject:** RE: Permission needed from Whiptail LACT unit on Rodeo 494H pad

Mark,

We approve the use of the Pipeline Transfer LACT equipment on the Rodeo Unit 494 well pad to transfer product from the wells below to Whiptail Midstream, LLC's pipeline system.

**RODEO UNIT 494H/495H/496H PIPELINE LACT UNIT:**

WELLS TO BE SERVED BY PIPELINE LACT UNIT:

- RODEO UNIT 494H/ API # 30-045-35923/ UNIT D Sec. 31, T23N, R8W, NMPPM
- RODEO UNIT 495H/ API # 30-045-38170/ UNIT D Sec. 31, T23N, R8W, NMPPM
- RODEO UNIT 496H/ API # 30-045-38169/ UNIT D Sec. 31, T23N, R8W, NMPPM

Thank you,

[Andy Pickle](#)

**Whiptail Midstream**

O: (918) 289-2209

M: (580) 402-4881

[andy.pickle@whiptailmidstream.com](mailto:andy.pickle@whiptailmidstream.com)



*[From receipt to delivery, the midstream partner you count on.](#)*

---

**From:** Mark Lokshin <[MLokshin@enduringresources.com](mailto:MLokshin@enduringresources.com)>  
**Sent:** Monday, October 3, 2022 12:30 PM  
**To:** Andy Pickle <[andy.pickle@whiptailmidstream.com](mailto:andy.pickle@whiptailmidstream.com)>  
**Subject:** FW: Permission needed from Whiptail LACT unit on Rodeo 494H pad

Andy

Please see below.

Thank you

mark

---

**From:** Heather Huntington <[hhuntington@enduringresources.com](mailto:hhuntington@enduringresources.com)>

**Sent:** Monday, October 3, 2022 11:14 AM

**To:** Mark Lokshin <[MLokshin@enduringresources.com](mailto:MLokshin@enduringresources.com)>

**Subject:** Permission needed from Whiptail LACT unit on Rodeo 494H pad

Good Morning Mark,

Will you please reach out to Whiptail for approval for the LACT unit we plan on using on the Rodeo 494H pad, see description below?

As part of Enduring Resources IV, LLC's (Enduring) Rodeo Unit 494H Pipeline Transfer LACT Unit C-106 LACT application to the NMOCD Aztec office, Enduring needs an approval from the transporter, which in this case is Whiptail. Custody transfer will occur at one location: the ROU 494 Central Delivery Point. A Coriolis meter is installed at the custody transfer point that routes oil to Whiptail's pipeline. The Pipeline Transfer LACT equipment for the below listed wells will be located on Enduring's Rodeo Unit 494H pad and will be utilized for sales oil royalty distribution. LACT will be proved per regulatory requirements.

**RODEO UNIT 494H/495H/496H PIPELINE LACT UNIT:**

WELLS TO BE SERVED BY PIPELINE LACT UNIT:

- RODEO UNIT 494H/ API # 30-045-35923/ UNIT D Sec. 31, T23N, R8W, NMPPM
- RODEO UNIT 495H/ API # 30-045-38170/ UNIT D Sec. 31, T23N, R8W, NMPPM
- RODEO UNIT 496H/ API # 30-045-38169/ UNIT D Sec. 31, T23N, R8W, NMPPM

Heather Huntington

Enduring Resources Permitting Technician

505-636-9751

**District I**  
1625 N. French Dr., Hobbs, NM 88240  
Phone:(575) 393-6161 Fax:(575) 393-0720  
**District II**  
811 S. First St., Artesia, NM 88210  
Phone:(575) 748-1283 Fax:(575) 748-9720  
**District III**  
1000 Rio Brazos Rd., Aztec, NM 87410  
Phone:(505) 334-6178 Fax:(505) 334-6170  
**District IV**  
1220 S. St Francis Dr., Santa Fe, NM 87505  
Phone:(505) 476-3470 Fax:(505) 476-3462

State of New Mexico  
Energy, Minerals and Natural Resources  
Oil Conservation Division  
1220 S. St Francis Dr.  
Santa Fe, NM 87505

CONDITIONS  
  
Action 148665

CONDITIONS

Operator: ENDURING RESOURCES, LLC 6300 S Syracuse Way, Suite 525 Centennial, CO 80111	OGRID: 372286
	Action Number: 148665
	Action Type: [C-106] NOI Utilize ACTE (C-106)

CONDITIONS

Created By	Condition	Condition Date
dmcclure	None	10/28/2022