

Well Name: JICARILLA 98	Well Location: T26N / R3W / SEC 18 / NWNE /	County or Parish/State: RIO ARRIBA / NM
Well Number: 11	Type of Well: CONVENTIONAL GAS WELL	Allottee or Tribe Name: JICARILLA APACHE
Lease Number: JIC98	Unit or CA Name:	Unit or CA Number:
US Well Number: 300392530700C2	Well Status: Abandoned	Operator: SOUTHLAND ROYALTY COMPANY

Subsequent Report

Sundry ID: 2700843

Type of Submission: Subsequent Report	Type of Action: Plug and Abandonment
Date Sundry Submitted: 11/01/2022	Time Sundry Submitted: 12:29
Date Operation Actually Began: 10/10/2022	

Actual Procedure: MorningStar Operating has plugged and abandoned the Jicarilla 98#11 as of 10/26/22. Attached are the Daily and Cement Reports, Final WBD, and CBL.

SR Attachments

Actual Procedure

- JICARILLA_98_11_CBL_20221101122759.PDF
- Jicarilla_98_11_PA_WBD_Final_20221101122750.pdf
- Jicarilla_98_11_PA_Daily__Cementing_Reports_20221101122734.pdf
- Email_Re_BLM_Removed_COA_for_Mancos_Plug_20221101122716.pdf

Received by OCD: 11/3/2022 9:04:54 AM

Page 2 of 41

Well Name: JICARILLA 98	Well Location: T26N / R3W / SEC 18 / NWNE /	County or Parish/State: RIO ARRIBA / NM
Well Number: 11	Type of Well: CONVENTIONAL GAS WELL	Allottee or Tribe Name: JICARILLA APACHE
Lease Number: JIC98	Unit or CA Name:	Unit or CA Number:
US Well Number: 300392530700C2	Well Status: Abandoned	Operator: SOUTHLAND ROYALTY COMPANY

Operator

I certify that the foregoing is true and correct. Title 18 U.S.C. Section 1001 and Title 43 U.S.C. Section 1212, make it a crime for any person knowingly and willfully to make to any department or agency of the United States any false, fictitious or fraudulent statements or representations as to any matter within its jurisdiction. Electronic submission of Sundry Notices through this system satisfies regulations requiring a

Operator Electronic Signature: CONNIE BLAYLOCK	Signed on: NOV 01, 2022 12:28 PM
Name: SOUTHLAND ROYALTY COMPANY	
Title: Regulatory Technician	
Street Address: 400 W 7th St.	
City: Forth Worth	State: TX
Phone: (817) 334-7882	
Email address: CBLAYLOCK@MSPARTNERS.COM	

Field

Representative Name: Amy Byars		
Street Address:		
City:	State:	Zip:
Phone:		
Email address: abyars@mspartners.com		

BLM Point of Contact

BLM POC Name: KENNETH G RENNICK	BLM POC Title: Petroleum Engineer
BLM POC Phone: 5055647742	BLM POC Email Address: krennick@blm.gov
Disposition: Accepted	Disposition Date: 11/02/2022
Signature: Kenneth Rennick	

Morningstar Operating LLC

Plug And Abandonment End Of Well Report

Jicarilla 98 #011

1165' FNL & 1450' FEL, Section 18, 26N, 03W

Rio Arriba County, NM / API 30-039-25307

Work Summary:

- 10/9/22** Made BLM and NMOCD P&A operations notifications at 9:00 AM MST.
- 10/10/22** Arrived at location and held safety meeting. Moved equipment to new location. Equipment was stuck had to wait on winch trucks. Rig experienced mechanical problems. Waiting on parts.
- 10/14/22** Arrived at location and held safety meeting. R/U equipment. ND WH, NU BOP, and RU floor. Checked well pressures: Tubing 150 psi, Casing: 360 psi, Bradenhead: 0 psi Bled down well. TOOH with 199, 2-3/8" joints, SN, and 1, 2-3/8" joint with notch collar. P/U 4.5" casing scraper and TIH to 5698'. TOOH. L/D scraper and P/U 4.5" CR. TIH and set CR at 5660'. Secured and shut in well for the day.
- 10/19/22** Arrived on location and held safety meeting. Checked well pressures: Tubing 10 psi, Casing: 0 psi, Bradenhead: 0 psi. Bled down well. R/U cementing services. Pumped cement from 5660' to approximately 5332' to cover the Mesa Verde formation top. R/D cementers. L/D 10 joints and TOOH. WOC 4 hours. TIH and tagged top of plug #1 at 4920'. Discussed plug with BLM. It was determined that the plug is too high. The decision was made to drill out plug #1 and repump it. TOOH.
- 10/20/22** Arrived on location and held safety meeting. Checked well pressures: Tubing: 10 psi, Casing: 0 psi, Bradenhead: 0 psi. Bled down well. TIH with a bit and tagged at 4920'. Waited on power swivel. R/U power swivel, drilled out hard cement from 4920' to 4965' (45'). Continued in hole with power swivel until we tagged

hard cement at 5355'. Verified depths with BLM representative, 77' above Mesa Verde formation. R/D power swivel. L/D 54 joints and TOOH. Removed bit and installed 4.5" CR. TIH and set CR at 3697'. R/U cementing services, circulated hole with 22 bbls, pumped 34 total. Secured and shut in well for the day.

10/21/22 Arrived on location and held safety meeting. Checked well pressures: Tubing: 0 psi, Casing: 0 psi, Bradenhead: 0 psi. Bled down well. Circulated with 20 bbls. Attempted to pressure test casing but was unsuccessful. TOOH. R/U wireline. RIH and logged well. POOH. TIH to 3697'. R/U cementing services. Pumped plug #2 from 3697' to approximately 3595' to cover the Pictured Cliffs perforations. R/D cementing services. L/D 4 joints and TOOH. WOC 4 hours. TIH and tagged CR at 3697', No Cement. R/U cementers re-pumped cement from 3697' to approximately 3595'. R/D cementing services. L/D 4 joints. Reverse circulated at 3557' and TOOH. WOC overnight. Secured and shut in well for the day

10/22/22 Arrived on location and held safety meeting. Checked well pressures: Tubing: 0 psi, Casing: 0 psi, Bradenhead: 0 psi. Bled down well. TIH and tagged top of plug #2 at 3597'. TOOH. R/U wireline. RIH and perforated at 3573'. POOH. TIH with 4.5" packer. Set packer at 3520'. Attempted to get an injection rate but was unsuccessful, fluid started communicating with casing. Unset packer and attempted at different depths (3489', 3426', 3364', and 3302') continued to have the same issue. Attempted to pressure test over packer and fluid continued to communicate with casing. Consulted with BLM and NMOCD, the decision was made to pump a balanced plug. TOOH and L/D packer. TIH to 3588'. R/U cementing services. Pumped plug #3 from 3588' to approximately 3409'. R/D cementers. L/D 6 joints and TOOH. WOC overnight. Secured and shut in well for the day.

10/23/22 Arrived on location and held safety meeting. Checked well pressures: Tubing: 0 psi, Casing: 0 psi, Bradenhead: 0 psi. Bled down well. TIH and tagged top of plug #3 at 3391'. TOOH. R/U wireline services. Attempted to RIH but could not get past 3134'. R/D wireline services. P/U casing scraper. TIH to 3391'. TOOH. R/U wireline services. RIH and perforated at 3391'. POOH and R/D wireline services. Had to shut down due to rainy and muddy conditions. Secured and shut in well for the day.

10/24/22 Arrived on location and held safety meeting. Checked well pressures: Tubing: 0 psi, Casing: 0 psi, Bradenhead: 0 psi. Bled down well. P/U 4.5" packer. TIH and set at 3302'. Attempted to establish an injection rate but was unsuccessful. Unset packer and TOOH. R/U wireline. RIH and perforated at 3349'. POOH. TIH with Packer and

set at 3302'. Attempted to establish an injection rate but was unsuccessful. Unset packer and TOOH. TIH to 3388'. R/U cementing services. Pumped plug #4 from 3388' to approximately 3249'. L/D 5 joints and TOOH. WOC overnight. Secured and shut in well for the day.

10/25/22 Arrived on location and held safety meeting. Checked well pressures: Tubing: 0 psi, Casing: 0 psi, Bradenhead: 0 psi. Bled down well. TIH tagged top of plug #4 at 3261'. L/D 58 joints and TOOH. R/U wireline services. RIH and perforated at 1485'. POOH. P/U 4.5" packer. TIH and set at 1434'. Attempted to get an injection rate but was unsuccessful. Attempted to pressure test casing above packer but was unsuccessful, fluid began coming out of BH valve. Unset packer and TOOH. L/D packer. TIH. R/U cementing services. Pumped plug #5 from 1534' to approximately 1335' to cover the Nacimiento formation top. R/D cementing services. L/D 7 joints and TOOH. WOC 4 hours. TIH and tagged top of plug #5 at 1362'. Received BLM approval for plug. TOOH. R/U wireline services. RIH and perforated at 267'. POOH. P/U 4.5" packer. TIH and set packer at 248'. Successfully circulated water down tubing, through packer, into perforations, and out BH at surface. Successfully pressure tested casing above packer to 500 psi. Unset packer and L/D tubing. R/U cementing services. Pumped cement down 4.5" casing into perforations at 267' and out BH valve at surface. R/D cementing services. RD floor, ND BOP, and NU WH. WOC overnight. Secured and shut in well for the day.

10/26/22 Arrived on location and held safety meeting. Checked well pressures: Tubing: 0 psi, Casing: 0 psi, Bradenhead: 0 psi. reformed well head cut off. Removed old wellhead. Tagged cement at 80' in the 4.5" casing and at 40' in the 8.6" casing. R/U cementing services. Pumped cement from 80' to surface in 4.5" and from 40' to surface in the 8.6". R/D cementing services. Welded plate marker in place per all regulations. Topped off cellar with cement. R/D all equipment and MOL.

Plug Summary:

Plug #1: (Mesa Verde Perforations and formation top 5,660'-5,355', 21 Sacks Type III Cement)

P/U 4.5" CR. TIH and set CR at 5660'. R/U cementing services. Pumped cement from 5660' to approximately 5332' to cover the Mesa Verde formation top. R/D cementers. L/D 10 joints and TOOH. WOC 4 hours. TIH and tagged top of plug #1 at 4920'. Discussed plug

with BLM. It was determined that the plug is too high. The decision was made to drill out plug #1 and repump it. TIH with a bit and tagged at 4920'. Waited on power swivel. R/U power swivel, drilled out hard cement from 4920' to 4965' (45'). Continued in hole with power swivel until we tagged hard cement at 5355'. Verified depths with BLM representative, 77' above Mesa Verde formation.

.Plug #2: (Pictured Cliffs Formation Top 3,697'-3,597', 12 Sacks Type III Cement)

P/U CR. TIH and set CR at 3697'. R/U cementing services, circulated hole with 22 bbls, pumped 34 total. R/U cementing services. Pumped plug #2 from 3697' to approximately 3595' to cover the Pictured Cliffs perforations. R/D cementing services. L/D 4 joints and TOOH. WOC 4 hours. TIH and tagged CR at 3697', No Cement. R/U cementers re-pumped cement from 3697' to approximately 3595'. R/D cementing services. L/D 4 joints. Reverse circulated at 3557' and TOOH. WOC overnight. TIH and tagged top of plug #2 at 3597'.

Plug #3: (Fruitland Formation Top 3,588'-3,391', 12 Sacks Type III Cement)

R/U wireline. RIH and perforated at 3573'. POOH. TIH with 4.5" packer. Set packer at 3520'. Attempted to get an injection rate but was unsuccessful, fluid started communicating with casing. Unset packer and attempted at different depths (3489', 3426', 3364', and 3302') continued to have the same issue. Attempted to pressure test over packer and fluid continued to communicate with casing. Consulted with BLM and NMOCD, the decision was made to pump a balanced plug. TOOH and L/D packer. TIH to 3588'. R/U cementing services. Pumped plug #3 from 3588' to approximately 3409'. R/D cementers. L/D 6 joints and TOOH. WOC overnight. TIH and tagged top of plug #3 at 3391'.

Plug #4: (Fruitland and Kirtland Formation Top 3,388'-3,261', 12 Sacks Type III Cement)

R/U wireline services. RIH and perforated at 3391'. POOH and R/D wireline services. P/U 4.5" packer. TIH and set at 3302'. Attempted to establish an injection rate but was unsuccessful. Unset packer and TOOH. R/U wireline. RIH and perforated at 3349'. POOH. TIH with Packer and set at 3302'. Attempted to establish an injection rate but was unsuccessful. Unset packer and TOOH. TIH to 3388'. R/U cementing services. Pumped plug #4 from 3388' to approximately 3249'. L/D 5 joints and TOOH. WOC overnight. TIH tagged top of plug #4 at 3261'

Plug #5: (Nacimiento Formation Top 1,534-1,362, 13 Sacks Type III Cement)

R/U wireline services. RIH and perforated at 1485'. POOH. P/U 4.5" packer. TIH and set at 1434'. Attempted to get an injection rate but was unsuccessful. Attempted to pressure test casing above packer but was unsuccessful, fluid began coming out of BH valve. Unset packer and TOOH. L/D packer. TIH. R/U cementing services. Pumped plug #5 from 1534' to approximately 1335' to cover the Nacimiento formation top. R/D cementing services. L/D 7 joints and TOOH. WOC 4 hours. TIH and tagged top of plug #5 at 1362'. Received BLM approval for plug.

Plug #6: (Surface Casing Shoe, 267' to surface', 109 Sacks Type III Cement [11 sx for top off])

R/U wireline. RIH and perforated at 191'. POOH. TIH with 4.5" packer and set at 157'. Successfully established injection rate through packer and out Bradenhead valve with 8 bbls, pumped 12 bbls total. Attempted to pressure test casing above packer but was unsuccessful. Unset packer and TOOH. L/D packer and picked up 4.5" CR. TIH and set CR at 157'. R/U cementing services. Pumped cement through CR, into perforations at 191', and out of Bradenhead Valve at surface. Stung out of CR and pumped cement from top of CR at 157' to surface. R/D cementing services. WOC 4 hours. Performed wellhead cutoff. Cement was 12' low in 4.5" casing and 10' low in 8.6" casing. R/U cementing services and performed top off in both casing strings. Topped off cellar with cement. MOL.

P & A Daily Report

Drake

WELL SERVICE INC.



PO Box 538 Farmington, NM 87499 505.327.7301

Company:	Morningstar Operating
Well Name:	Jicarilla 98 #011
API #:	30-039-25307
Date:	10/10/2022

WORK SUMMARY

Arrived at location and held safety meeting. Moved equipment to new location. Equipment was stuck had to wait on winch trucks. Rig experienced mechanical problems. Waiting on parts.

PLUG SUMMARY

<u>Plug No</u>	<u>Plug Depth</u>	<u>Sacks of Cement Used</u>
Plug 1	To	
Plug 2	To	
Plug 3	To	
Plug 4	To	
Plug 5	To	
Plug 6	To	
Plug 7	To	
Plug 8	To	
Plug 9	To	

BRIDGE PLUG/CEMENT RETAINER SUMMARY

<u>Depth Set</u>

WELL PRESSURES

Tubing	0 psi
Casing	0 psi
Bradenhead	0 psi

Drake**WELL SERVICE INC.**

PO Box 538 Farmington, NM 87499 505.327.7301

P & A Daily Report

Company: Morningstar Operating

Well Name: Jicarilla 98 #011

API #: 30-039-25307

Date: 10/14/2022

WORK SUMMARY

Arrived at location and held safety meeting. R/U equipment. ND WH, NU BOP, and RU floor. Checked well pressures (see pressures below). Bled down well. TOO H with 199, 2-3/8" joints, SN, and 1, 2-3/8" joint with notch collar. P/U 4.5" casing scraper and TIH to 5698'. TOO H. L/D scraper and P/U 4.5" CR. TIH and set CR at 5660'. Secured and shut in well for the day.

PLUG SUMMARY

<u>Plug No</u>		<u>Plug Depth</u>	<u>Sacks of Cement Used</u>
Plug 1	To		
Plug 2	To		
Plug 3	To		
Plug 4	To		
Plug 5	To		
Plug 6	To		
Plug 7	To		
Plug 8	To		
Plug 9	To		

BRIDGE PLUG/CEMENT RETAINER SUMMARY

<u>Depth Set</u>
5660'

WELL PRESSURES

Tubing	150 psi
Casing	360 psi
Bradenhead	0 psi

P & A Daily Report



PO Box 538 Farmington, NM 87499 505.327.7301

Company:	Morningstar Operating
Well Name:	Jicarilla 98 #011
API #:	30-039-25307
Date:	10/19/2022

WORK SUMMARY

Arrived at location and held safety meeting. Checked well pressures (see pressures below). Bled down well. R/U cementing services. Pumped cement from 5660' to approximately 5332' to cover the Mesaverde formation top. R/D cementers. L/D 10 joints and TOOH. WOC 4 hours. TIH and tagged top of plug #1 at 4920'. Discussed plug with BLM. It was determined that the plug is too high. The decision was made to drill out plug #1 and repump it. TOOH.

PLUG SUMMARY

Plug No	Plug Depth	Sacks of Cement Used
Plug 1 5660'	To 4920'	21 sx Type III Cement
Plug 2	To	
Plug 3	To	
Plug 4	To	
Plug 5	To	
Plug 6	To	
Plug 7	To	
Plug 8	To	
Plug 9	To	

BRIDGE PLUG/CEMENT RETAINER SUMMARY

Depth Set
5660'

WELL PRESSURES

Tubing	10 psi
Casing	0 psi
Bradenhead	0 psi

P & A Daily Report



PO Box 538 Farmington, NM 87499 505.327.7301

Company:	Morningstar Operating
Well Name:	Jicarilla 98 #011
API #:	30-039-25307
Date:	10/20/2022

WORK SUMMARY

Arrived at location and held safety meeting. Checked well pressures (see pressures below). Bled down well. TIH with a bit and tagged at 4920'. Waited on power swivel. R/U power swivel, drilled out hard cement from 4920' to 4965' (45'). Continued in hole with power swivel until we tagged hard cement at 5355'. Verified depths with BLM representative, 77' above Mesa Verde formation. R/D power swivel. L/D 54 joints and TOOH. Removed bit and installed 4.5" CR. TIH and set CR at 3697'. R/U cementing services, circulated hole with 22 bbls, pumped 34 total. Secured and shut in well for the day.

PLUG SUMMARY

Plug No	Plug Depth	Sacks of Cement Used
Plug 1 5660'	To 5355'	21 sx Type III Cement
Plug 2	To	
Plug 3	To	
Plug 4	To	
Plug 5	To	
Plug 6	To	
Plug 7	To	
Plug 8	To	
Plug 9	To	

BRIDGE PLUG/CEMENT RETAINER SUMMARY

Depth Set
5660'
3697'

WELL PRESSURES

Tubing	10 psi
Casing	0 psi
Bradenhead	0 psi

P & A Daily Report

Drake

WELL SERVICE INC.



PO Box 538 Farmington, NM 87499 505.327.7301

Company: Morningstar Operating

Well Name: Jicarilla 98 #011

API #: 30-039-25307

Date: 10/21/2022

WORK SUMMARY

Arrived at location and held safety meeting. Checked well pressures (see pressures below). Bled down well. Circulated with 20 bbls. Attempted to pressure test casing but was unsuccessful. TOOH. R/U wireline. RIH and logged well. POOH. TIH to 3697'. R/U cementing services. Pumped plug #2 from 3697' to approximately 3595' to cover the Pictured Cliffs perforations. R/D cementing services. L/D 4 joints and TOOH. WOC 4 hours. TIH and tagged CR at 3697', No Cement. R/U cementers re-pumped cement from 3697' to approximately 3595'. R/D cementing services. L/D 4 joints. Reverse circulated at 3557' and TOOH. WOC overnight. Secured and shut in well for the day.

PLUG SUMMARY

<u>Plug No</u>		<u>Plug Depth</u>		<u>Sacks of Cement Used</u>
Plug 1	5660'	To	5355'	21 sx Type III Cement
Plug 2	3697'	To	3595'	12 sx Type III Cement
Plug 3		To		
Plug 4		To		
Plug 5		To		
Plug 6		To		
Plug 7		To		
Plug 8		To		
Plug 9		To		

BRIDGE PLUG/CEMENT RETAINER SUMMARY

<u>Depth Set</u>
5660'
3697'

WELL PRESSURES

Tubing	0 psi
Casing	0 psi
Bradenhead	0 psi

P & A Daily Report



PO Box 538 Farmington, NM 87499 505.327.7301

Company:	Morningstar Operating
Well Name:	Jicarilla 98 #011
API #:	30-039-25307
Date:	10/22/2022

WORK SUMMARY

Arrived at location and held safety meeting. Checked well pressures (see pressures below). Bled down well. TIH and tagged top of plug #2 at 3597'. TOO. R/U wireline. RIH and perforated at 3573'. POOH. TIH with 4.5" packer. Set packer at 3520'. Attempted to get an injection rate but was unsuccessful, fluid started communicating with casing. Unset packer and attempted at different depths (3489', 3426', 3364', and 3302') continued to have the same issue. Attempted to pressure test over packer and fluid continued to communicate with casing. Consulted with BLM and NMOCD, the decision was made to pump a balanced plug. TOO. L/D packer. TIH to 3588'. R/U cementing services. Pumped plug #3 from 3588' to approximately 3409'. R/D cementers. L/D 6 joints and TOO. WOC overnight. Secured and shut in well for the day.

PLUG SUMMARY

<u>Plug No</u>		<u>Plug Depth</u>		<u>Sacks of Cement Used</u>
Plug 1	5660'	To	5355'	21 sx Type III Cement
Plug 2	3697'	To	3597'	12 sx Type III Cement
Plug 3	3588'	To	3409'	12 sx Type III Cement
Plug 4		To		
Plug 5		To		
Plug 6		To		
Plug 7		To		
Plug 8		To		
Plug 9		To		

BRIDGE PLUG/CEMENT RETAINER SUMMARY

<u>Depth Set</u>
5660'
3697'

WELL PRESSURES

Tubing	0 psi
Casing	0 psi
Bradenhead	0 psi

P & A Daily Report



PO Box 538 Farmington, NM 87499 505.327.7301

Company:	Morningstar Operating
Well Name:	Jicarilla 98 #011
API #:	30-039-25307
Date:	10/23/2022

WORK SUMMARY

Arrived at location and held safety meeting. Checked well pressures (see pressures below). Bled down well. TIH and tagged top of plug #3 at 3391'. TOOH. R/U wireline services. Attempted to RIH but could not get past 3134'. R/D wireline services. P/U casing scraper. TIH to 3391'. TOOH. R/U wireline services. RIH and perforated at 3391'. POOH and R/D wireline services. Had to shut down due to rainy and muddy conditions. Secured and shut in well for the day.

PLUG SUMMARY

<u>Plug No</u>		<u>Plug Depth</u>		<u>Sacks of Cement Used</u>
Plug 1	5660'	To	5355'	21 sx Type III Cement
Plug 2	3697'	To	3597'	12 sx Type III Cement
Plug 3	3588'	To	3391'	12 sx Type III Cement
Plug 4		To		
Plug 5		To		
Plug 6		To		
Plug 7		To		
Plug 8		To		
Plug 9		To		

BRIDGE PLUG/CEMENT RETAINER SUMMARY

<u>Depth Set</u>
5660'
3697'

WELL PRESSURES

Tubing	0 psi
Casing	0 psi
Bradenhead	0 psi

P & A Daily Report



PO Box 538 Farmington, NM 87499 505.327.7301

Company:	Morningstar Operating
Well Name:	Jicarilla 98 #011
API #:	30-039-25307
Date:	10/24/2022

WORK SUMMARY

Arrived at location and held safety meeting. Checked well pressures (see pressures below). P/U 4.5" packer. TIH and set at 3302'. Attempted to establish an injection rate but was unsuccessful. Unset packer and TOOH. R/U wireline. RIH and perforated at 3349'. POOH. TIH with Packer and set at 3302'. Attempted to establish an injection rate but was unsuccessful. Unset packer and TOOH. TIH to 3388'. R/U cementing services. Pumped plug #4 from 3388' to approximately 3249'. L/D 5 joints and TOOH. WOC overnight. Secured and shut in well for the day.

PLUG SUMMARY

<u>Plug No</u>		<u>Plug Depth</u>		<u>Sacks of Cement Used</u>
Plug 1	5660'	To	5355'	21 sx Type III Cement
Plug 2	3697'	To	3597'	12 sx Type III Cement
Plug 3	3588'	To	3391'	12 sx Type III Cement
Plug 4	3388'	To	3249'	12 sx Type III Cement
Plug 5		To		
Plug 6		To		
Plug 7		To		
Plug 8		To		
Plug 9		To		

BRIDGE PLUG/CEMENT RETAINER SUMMARY

<u>Depth Set</u>
5660'
3697'

WELL PRESSURES

Tubing	0 psi
Casing	0 psi
Bradenhead	0 psi

P & A Daily Report



PO Box 538 Farmington, NM 87499 505.327.7301

Company:	Morningstar Operating
Well Name:	Jicarilla 98 #011
API #:	30-039-25307
Date:	10/25/2022

WORK SUMMARY

Arrived at location and held safety meeting. Checked well pressures (see pressures below). TIH tagged top of plug #4 at 3261'. L/D 58 joints and TOOH. R/U wireline services. RIH and perforated at 1485'. POOH. P/U 4.5" packer. TIH and set at 1434'. Attempted to get an injection rate but was unsuccessful. Attempted to pressure test casing above packer but was unsuccessful, fluid began coming out of BH valve. Unset packer and TOOH. L/D packer. TIH. R/U cementing services. Pumped plug #5 from 1534' to approximately 1335' to cover the Nacimiento formation top. R/D cementing services. L/D 7 joints and TOOH. WOC 4 hours. TIH and tagged top of plug #5 at 1362'. Received BLM approval for plug. TOOH. R/U wireline services. RIH and perforated at 267'. POOH. P/U 4.5" packer. TIH and set packer at 248'. Successfully circulated water down tubing, through packer, into perforations, and out BH at surface. Successfully pressure tested casing above packer to 500 psi. Unset packer and L/D tubing. R/U cementing services. Pumped cement down 4.5" casing into perforations at 267' and out BH valve at surface. R/D cementing services. RD floor, ND BOP, and NU WH. WOC overnight. Secured and shut in well for the day.

PLUG SUMMARY

<u>Plug No</u>		<u>Plug Depth</u>		<u>Sacks of Cement Used</u>
Plug 1	5660'	To	5355'	21 sx Type III Cement
Plug 2	3697'	To	3597'	12 sx Type III Cement
Plug 3	3588'	To	3391'	12 sx Type III Cement
Plug 4	3388'	To	3261'	12 sx Type III Cement
Plug 5	1534'	To	1362'	13 sx Type III Cement
Plug 6	267'	To	Surface	98 sx Type III Cement (20 sx in 4.5" 78 sx in 8.6")
Plug 7		To		
Plug 8		To		
Plug 9		To		

BRIDGE PLUG/CEMENT RETAINER SUMMARY

<u>Depth Set</u>
5660'
3697'

WELL PRESSURES

Tubing	0 psi
Casing	0 psi
Bradenhead	0 psi

P & A Daily Report

Drake

WELL SERVICE INC.



PO Box 538 Farmington, NM 87499 505.327.7301

Company: Morningstar Operating

Well Name: Jicarilla 98 #011

API #: 30-039-25307

Date: 10/26/2022

WORK SUMMARY

Arrived at location and held safety meeting. Checked well pressures (see pressures below). Preformed well head cut off. Removed old wellhead. Tagged cement at 80' in the 4.5" casing and at 40' in the 8.6" casing. R/U cementing services. Pumped cement from 80' to surface in 4.5" and from 40' to surface in the 8.6". R/D cementing services. Welded plate marker in place per all regulations. Topped off cellar with cement. R/D all equipment and MOL.

PLUG SUMMARY

<u>Plug No</u>		<u>Plug Depth</u>		<u>Sacks of Cement Used</u>
Plug 1	5660'	To	5355'	21 sx Type III Cement
Plug 2	3697'	To	3597'	12 sx Type III Cement
Plug 3	3588'	To	3391'	12 sx Type III Cement
Plug 4	3388'	To	3261'	12 sx Type III Cement
Plug 5	1534'	To	1362'	13 sx Type III Cement
Plug 6	267'	To	Surface	109 sx Type III Cement (20 sx in 4.5" 78 sx in 8.6" – 11 sx for top off)
Plug 7		To		
Plug 8		To		
Plug 9		To		

BRIDGE PLUG/CEMENT RETAINER SUMMARY

<u>Depth Set</u>
5660'
3697'

WELL PRESSURES

Tubing	0 psi
Casing	0 psi
Bradenhead	0 psi

MorningStar Operating, LLC

P&A WBD

Prepared by: Carnold
Updated by: JRyza
Date: 10/27/2022

KB = 13'
KB = 7,091'
GL = 7,078'
API# 30-039-25307

Spud Date: 09/03/1993
Date Completed: 11/05/1993

Nacimiento: 1,435'
Ojo Alamo: 3,349'
Kirtland: 3,466'
Fruitland: 3,539'
Pictured Cliffs: 3,739'
Mesaverde: 5,432'

Jicarilla 98 #11
Rio Arriba County, NM

TD – 6,474'; PBTD – 6,429'

12 ¼" hole to 217' KB.
Surface Csg: 5 jts 8 5/8" 24# K-55 ST&C
Setting Depth: 217'

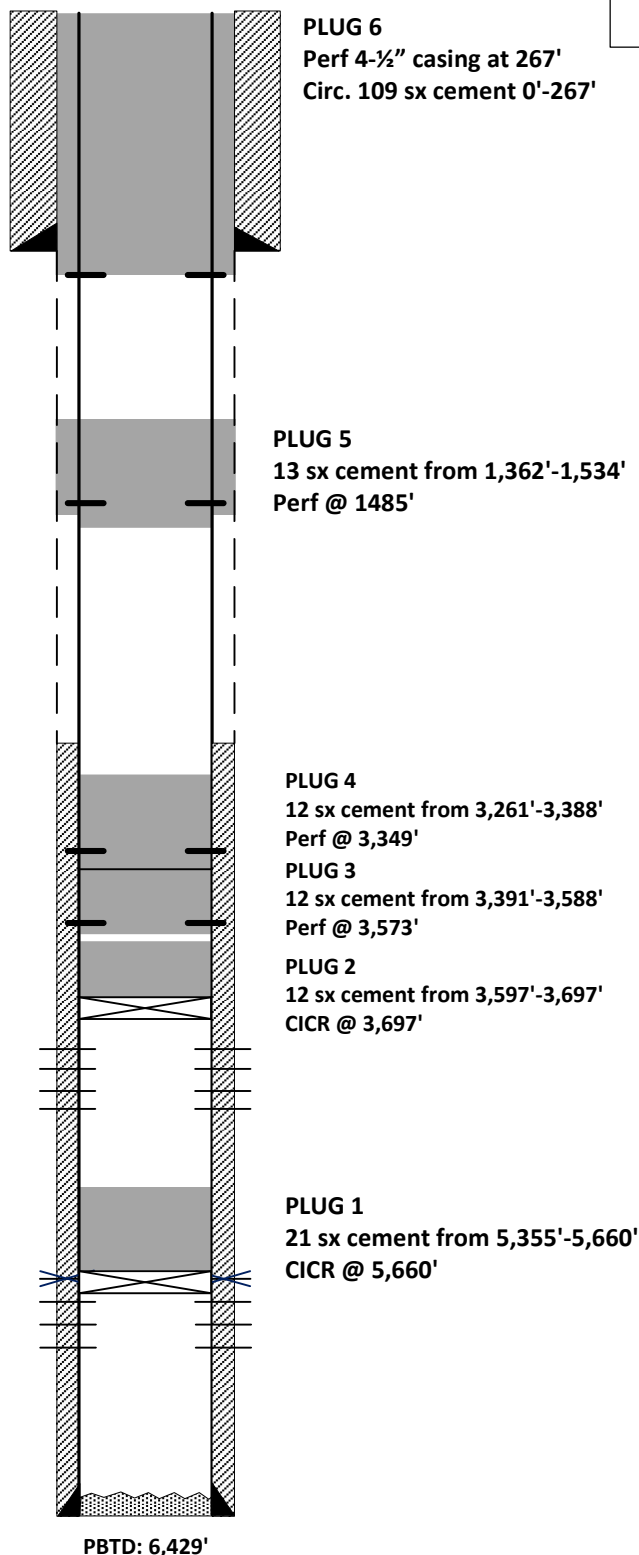
Cement
210 Sx Class G (249 ft³)
Circulated 13 bbls cmt to surface

7 7/8" hole to 6,474'
Production Csg: 150 jts 4-1/2" 11.6# K-55 ST&C
Setting Depth: 6,474'

Cement:
Lead: 204 Sx Class G (427 ft³) – nitrified foam cmt
Tail 1: 193 Sx Class G (403 ft³) – nitrified foam cmt
Tail 2: 181 Sx Class G (378 ft³) – nitrified foam cmt
Tail 3: 225 Sx Class G (470 ft³) – nitrified foam cmt
Tail 4: 425 Sx Class G (488 ft³)
No Cmt Circ at Surface

Pictured Cliffs Perfs:
3749, 51, 53, 55, 75,
4703', 10, 17, 65, 82'
0.31" dia; 2 SPF; 20 Holes

Mesaverde Perfs:
Squeezed perfs (2/25/2002):
5509', 12, 32, 34, 98, 5600'
Open perfs: 5704', 81, 5862',
5905', 18, 42, 46, 60, 64,
6107', 6209, 6246, 6267'
0.31" dia; 1 & 2 SPF



Re		
----	--	--

THANK YOU FOR USING BASIN WELL LOGGING

Released to Imaging: 11/4/2022 4:28:17 PM

WVFS8	8.83		8.92	2.75	90.00
WVFS7	8.83				
WVFS6	8.83				
WVFS5	8.83				
WVFS4	8.83				
WVFS3	8.83				
WVFS2	8.83				
WVFS1	8.83				
WVFCAL	8.83				
WVF3FT	8.83				
WVF5FT	7.75				
HEADVOLT	4.50				
CCL	3.75				
GR	0.90	GR275detector-Probe275Gr (110774) Probe 2.75" Dectector on Bottom	4.50	2.75	30.00
Dataset: jicarilla 98 #11.db: field/well/run1/merge1 Total length: 14.42 ft Total weight: 130.00 lb O.D.: 2.75 in					

Database File jicarilla 98 #11.db

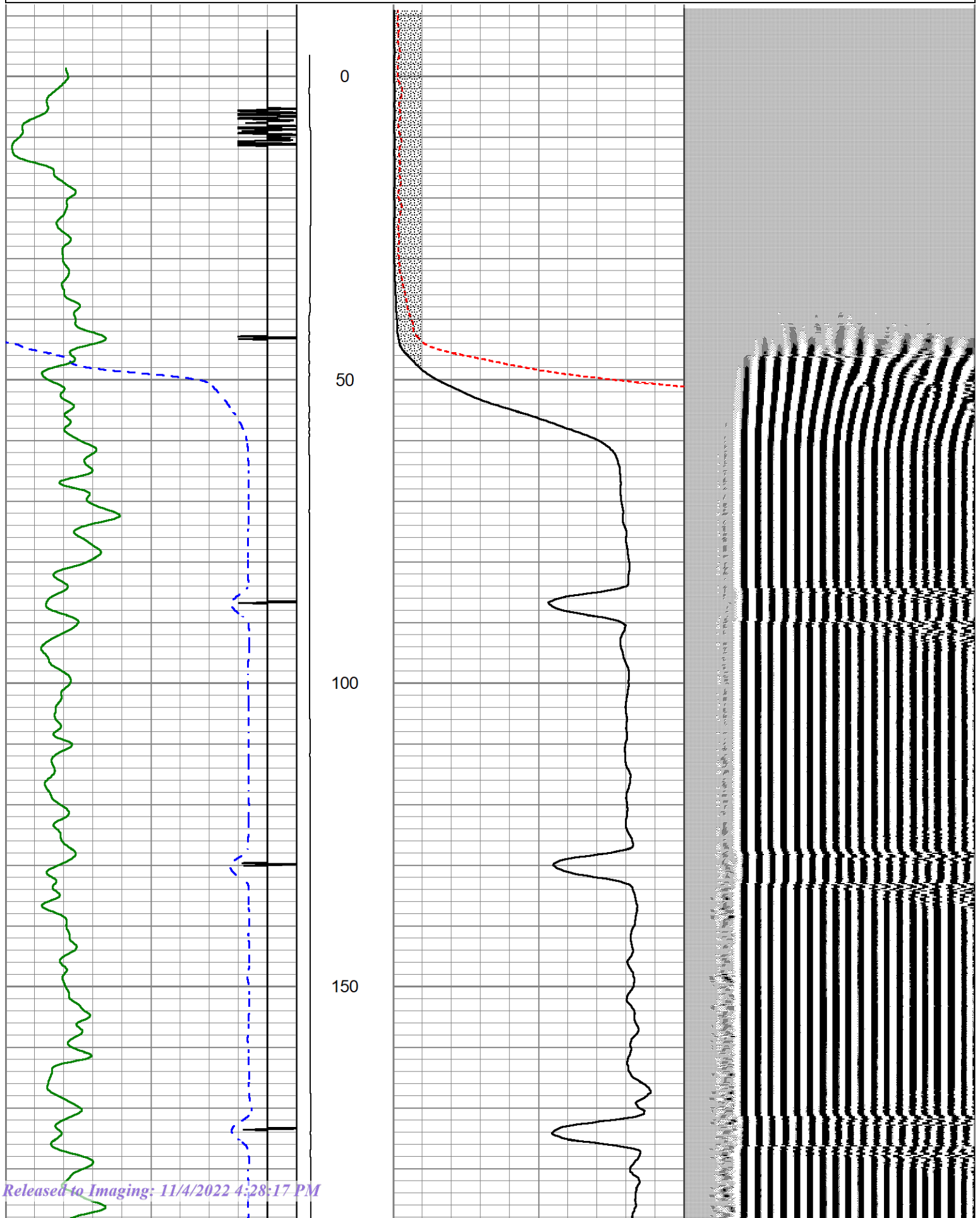
Dataset Pathname merge1

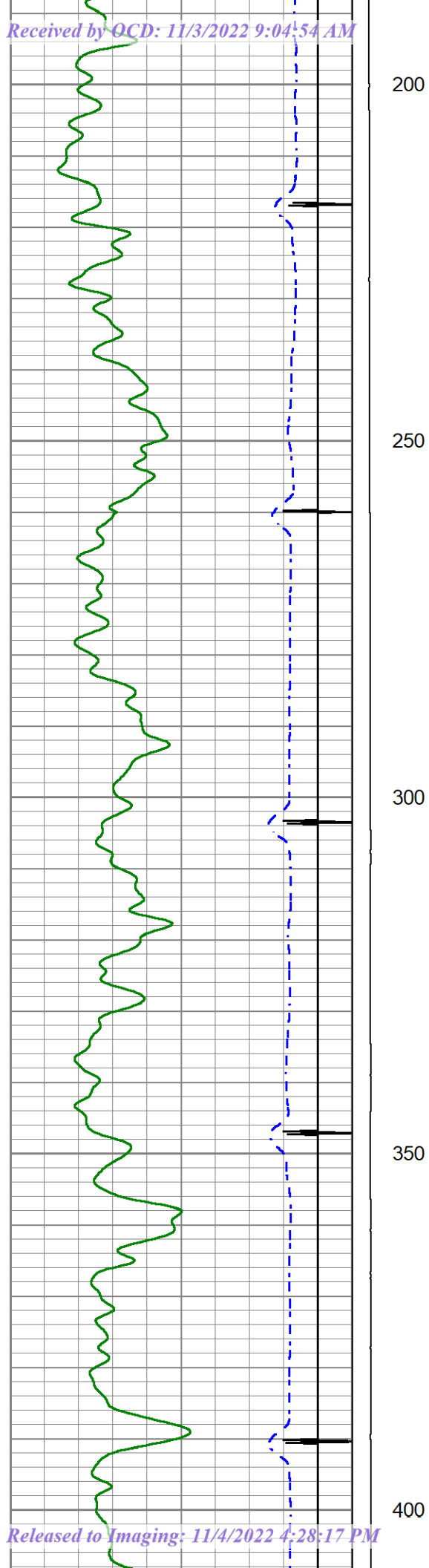
Presentation Format chl dr

Dataset Creation Fri Oct 21 11:26:28 2022

Charted by Depth in Feet scaled 1:240

345	TRAVEL TIME (usec)	245	LTEN	0	AMP AMPLITUDE (mV)	20	200	VDL (usec)	1200
9	Collar Locator	-1	0	(lb2000	0	AMPLITUDE (mV)	100		
0	Gamma Ray (GAPI)	180							





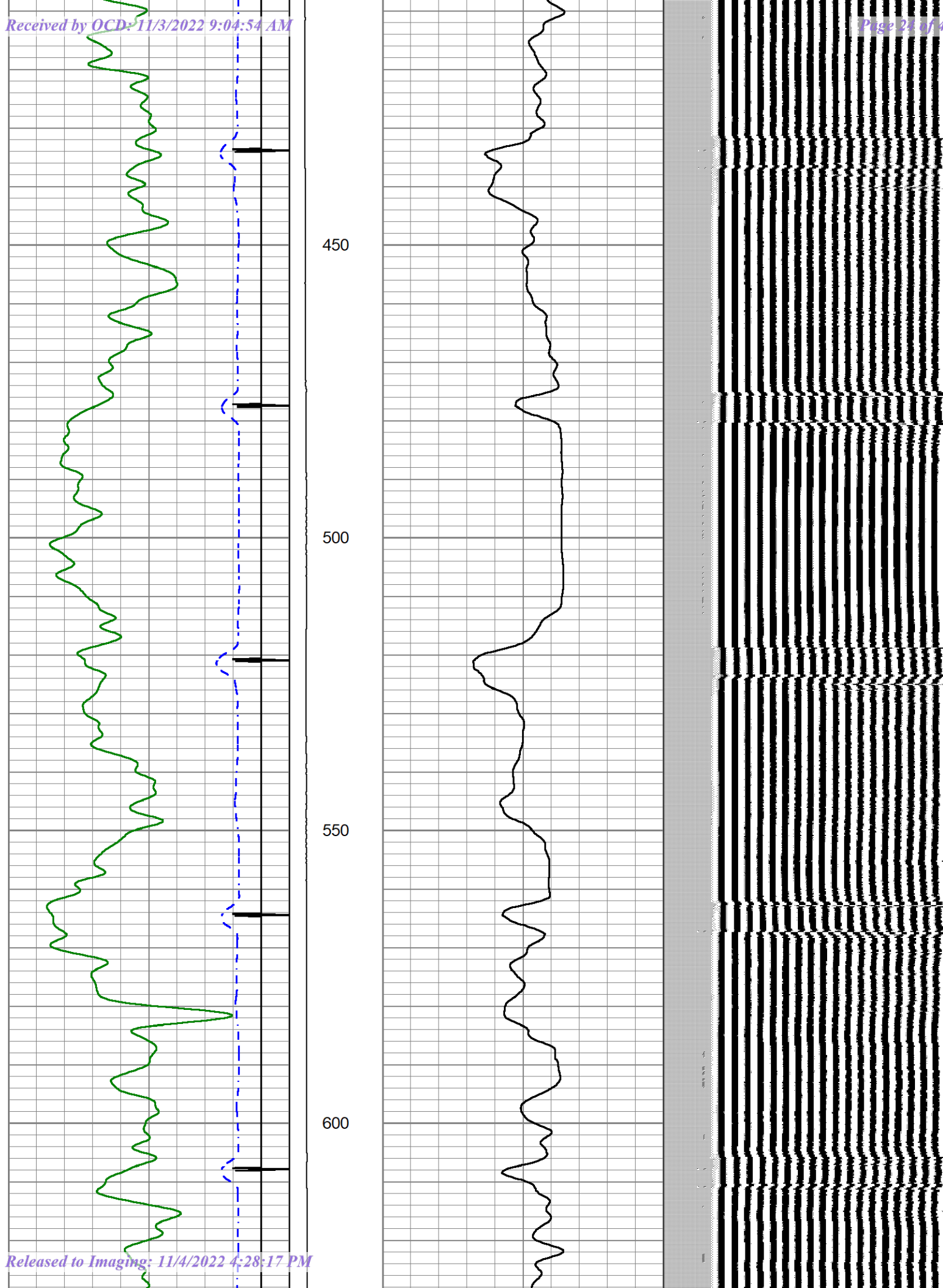
200

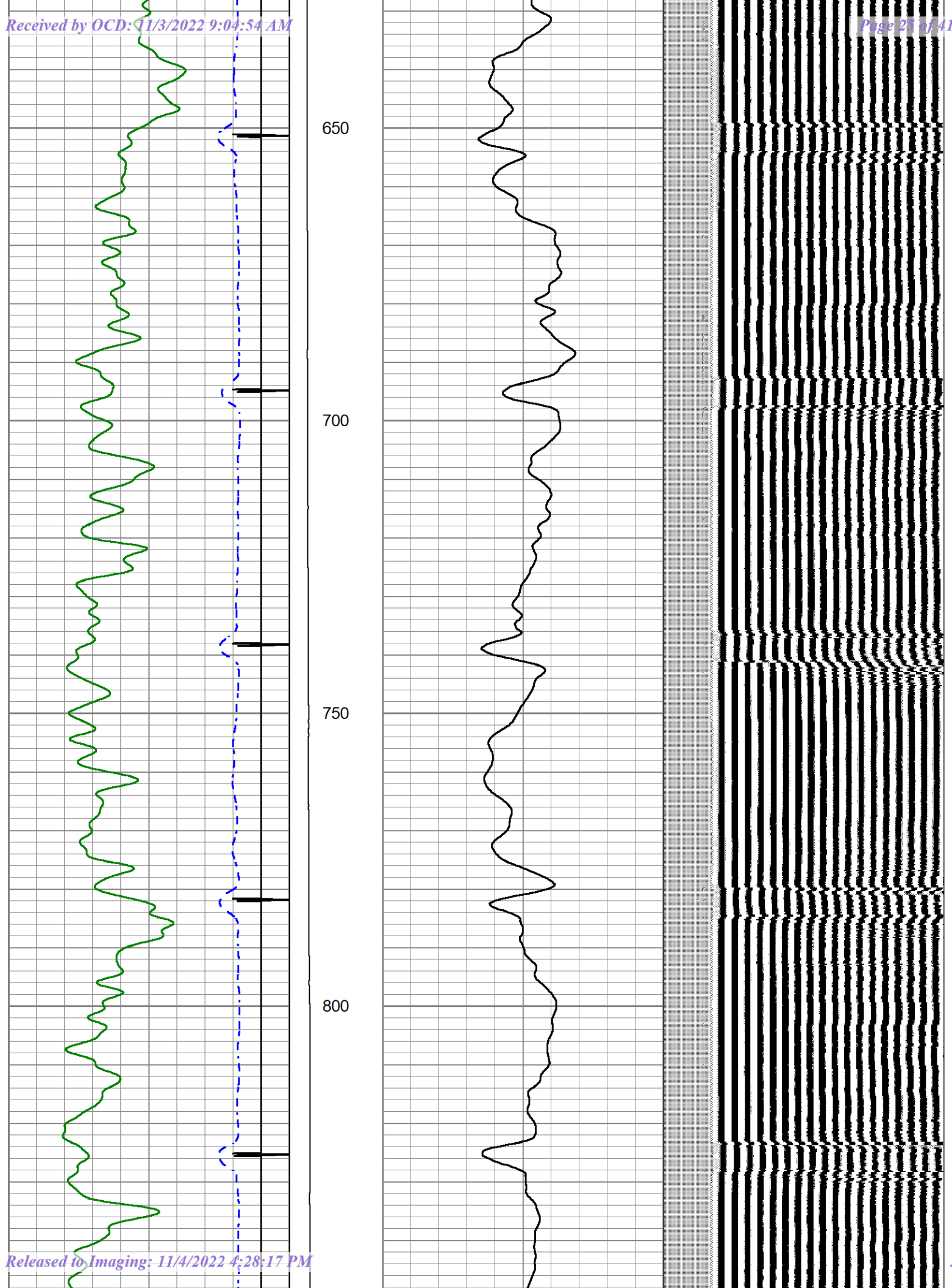
250

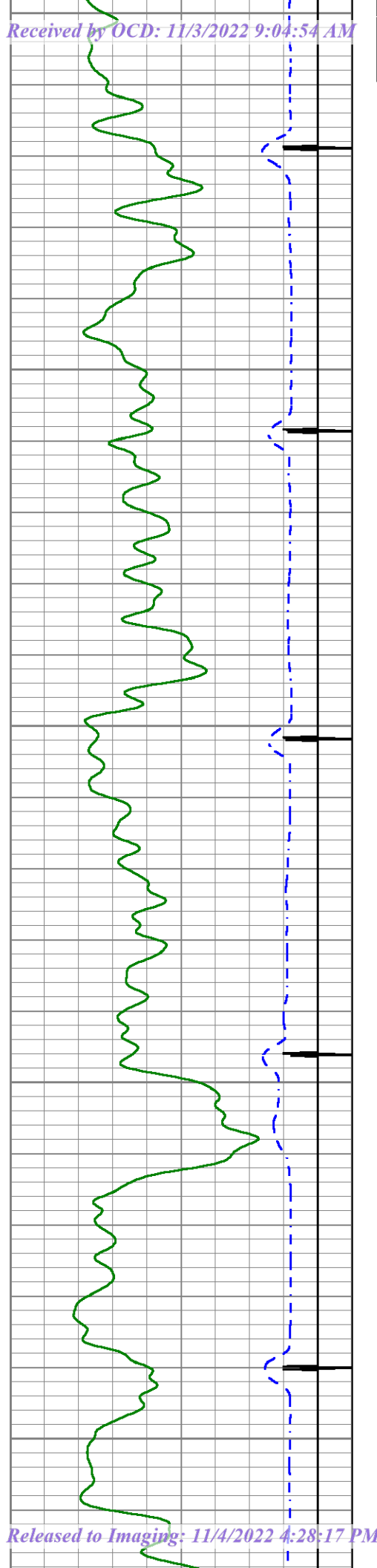
300

350

400







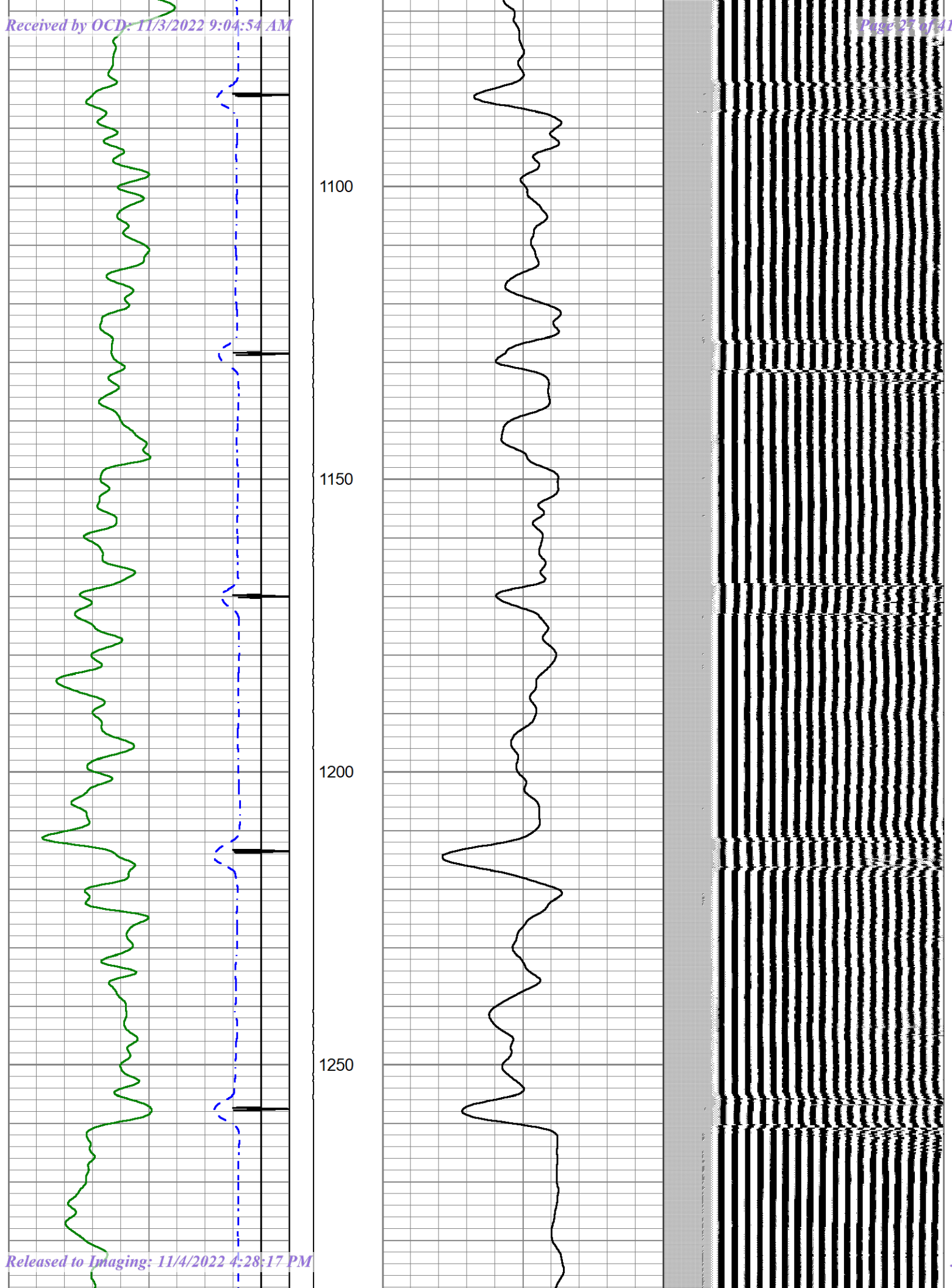
850

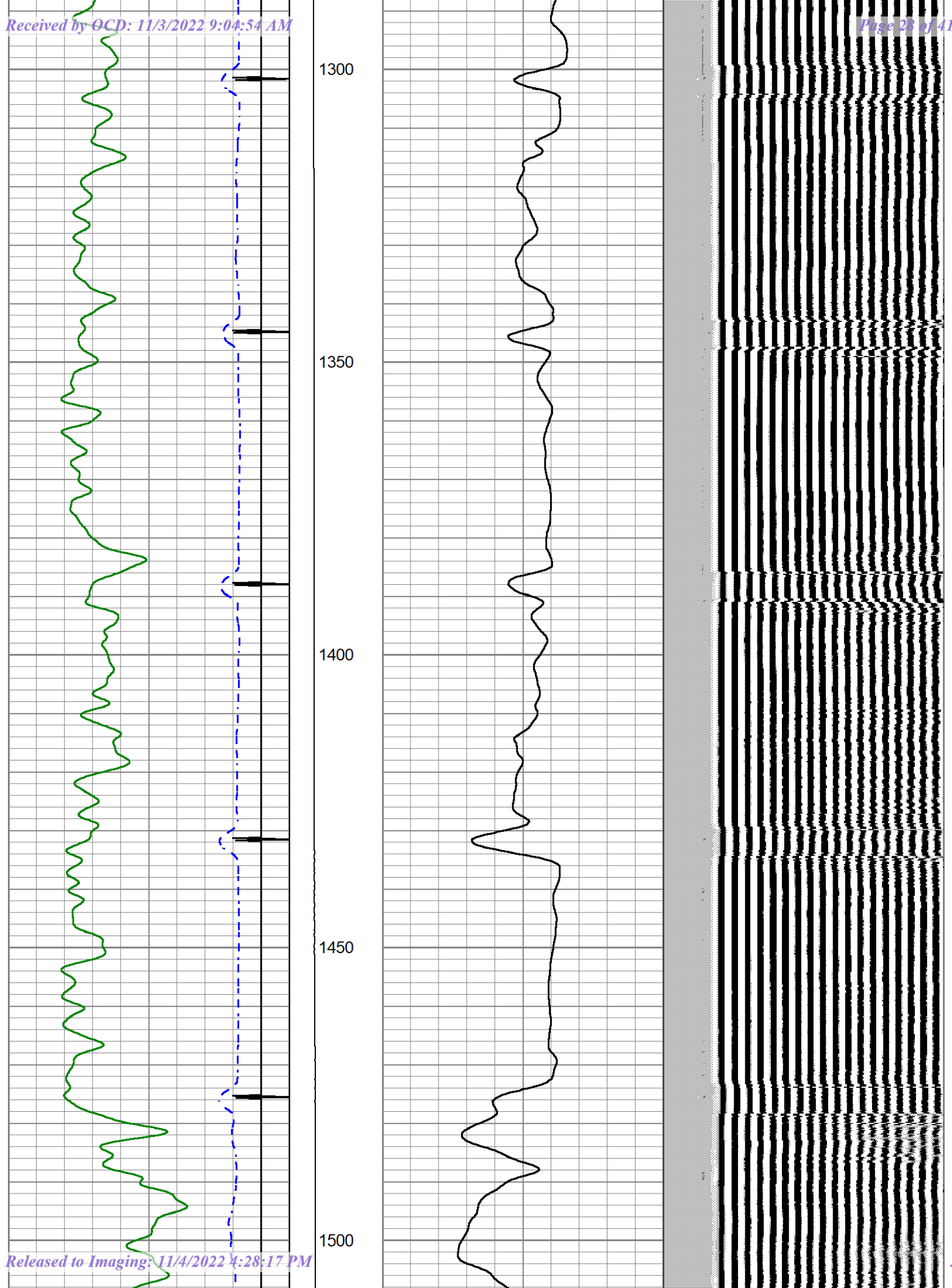
900

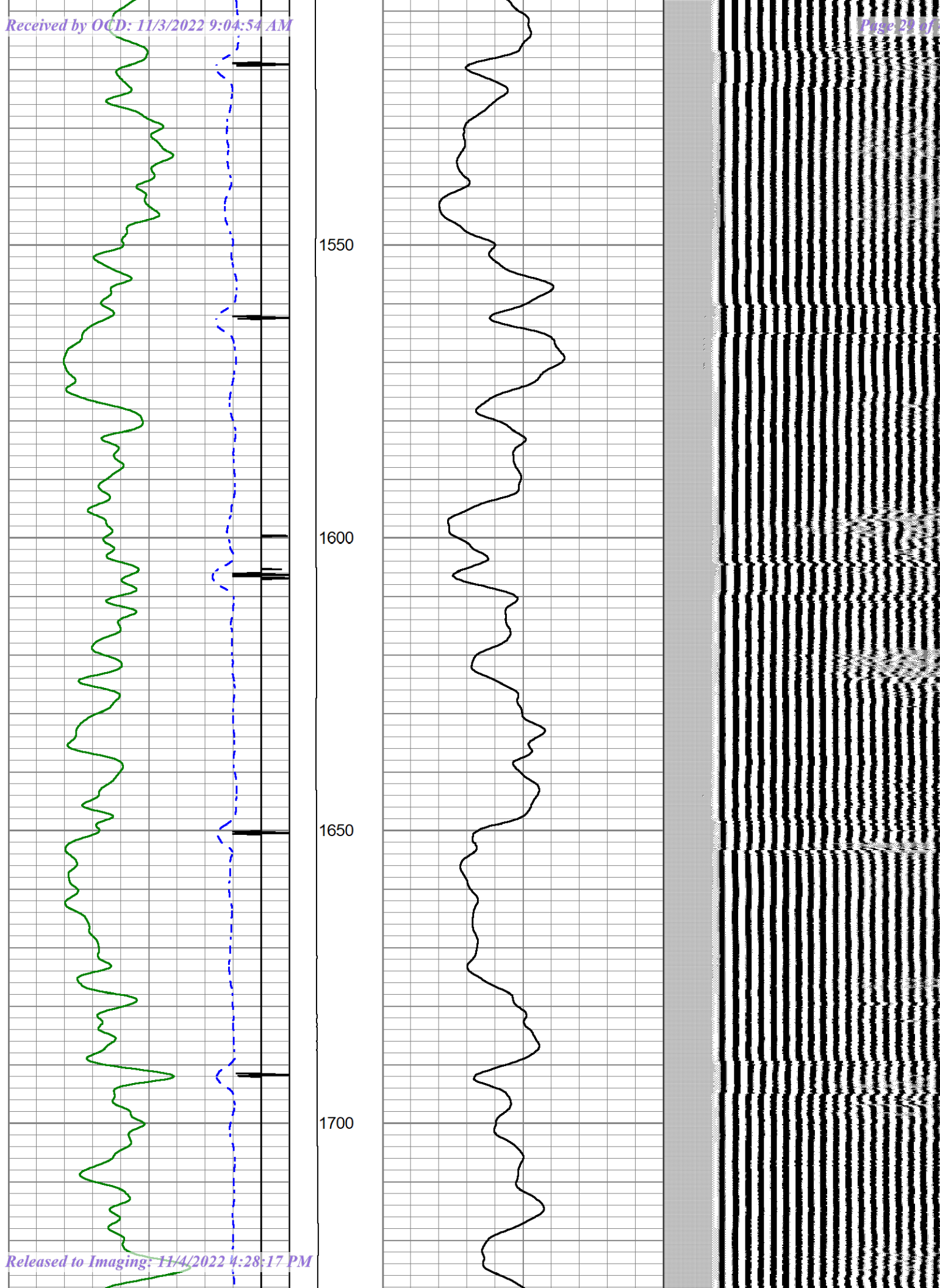
950

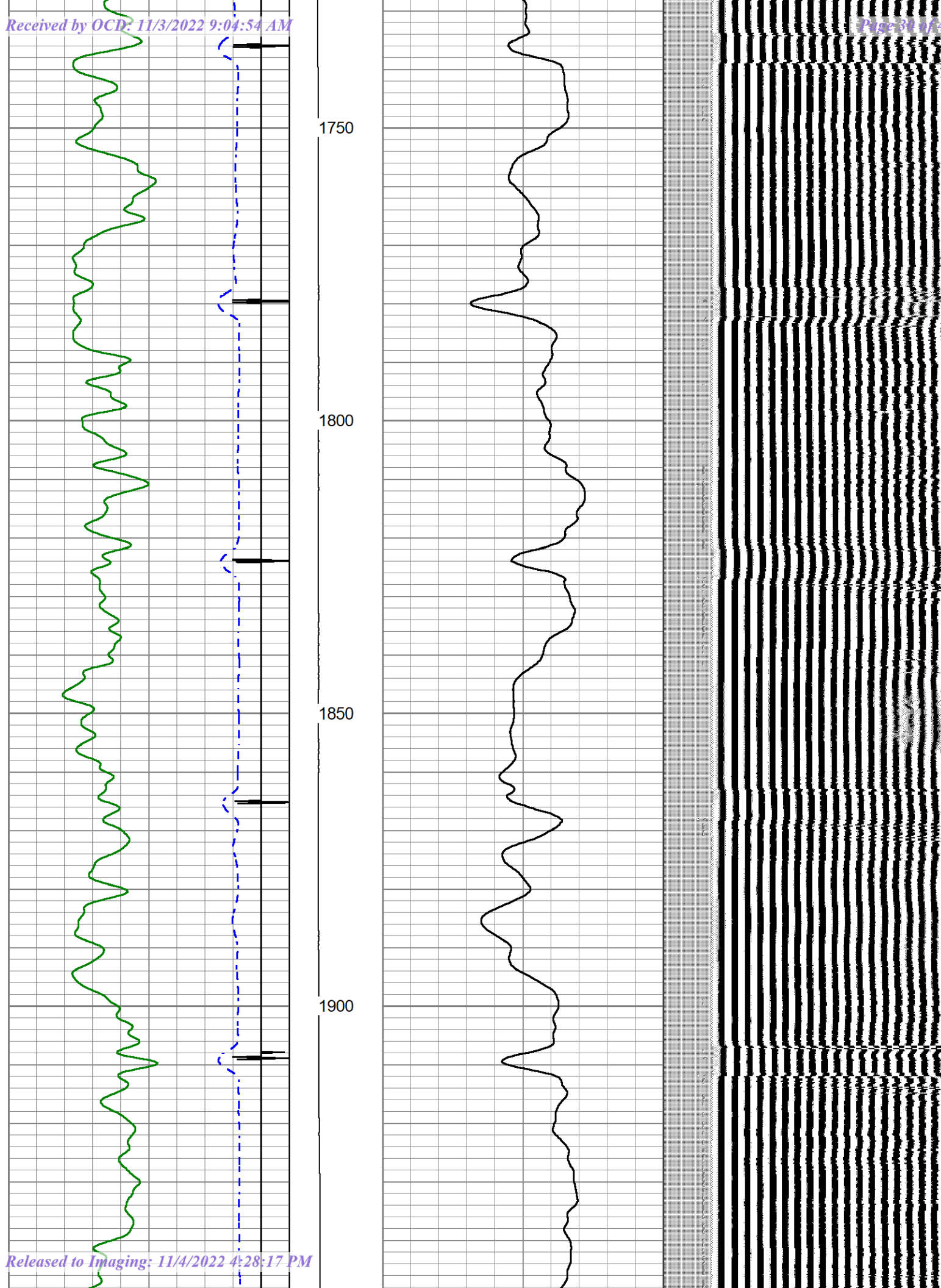
1000

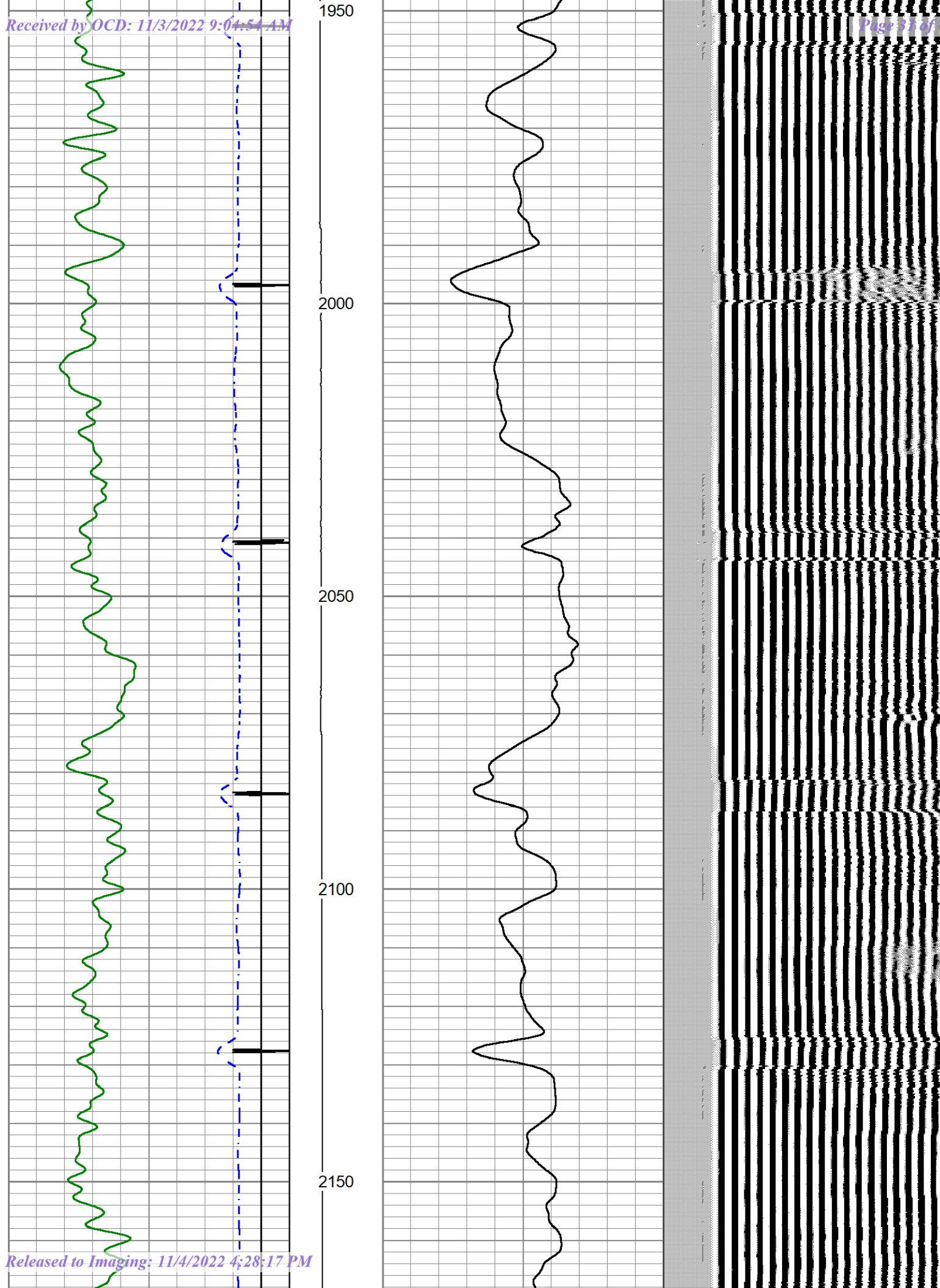
1050

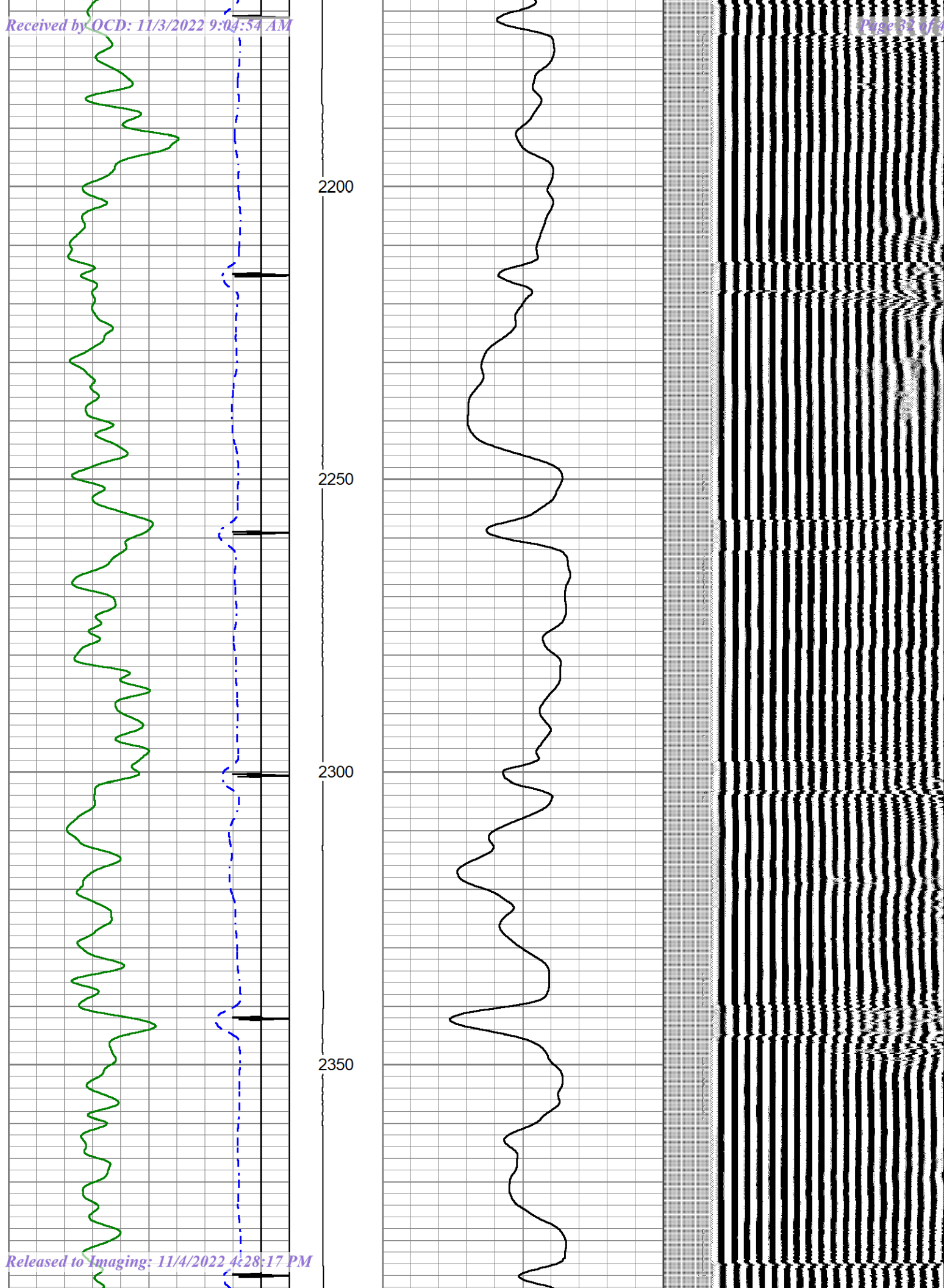


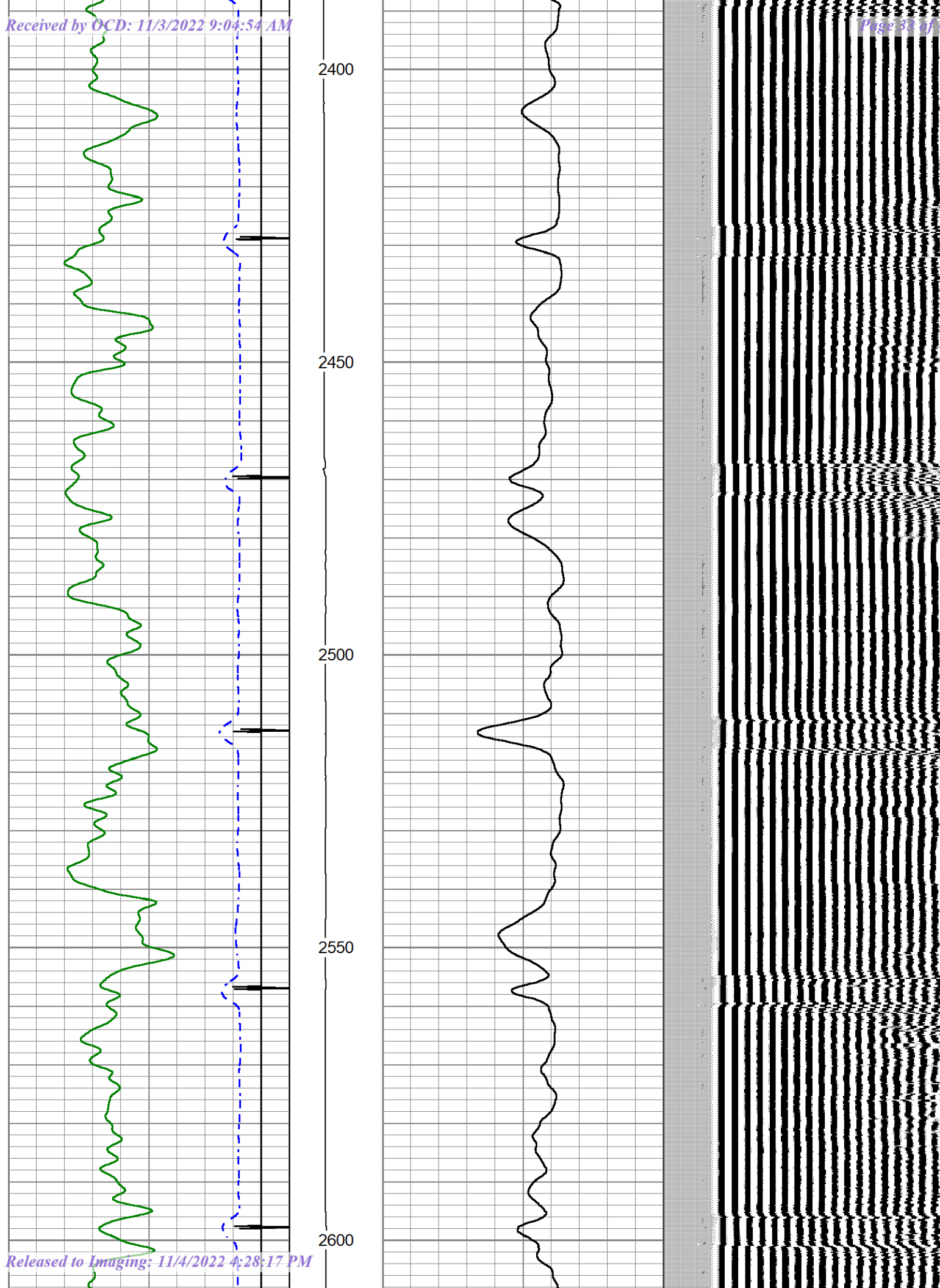


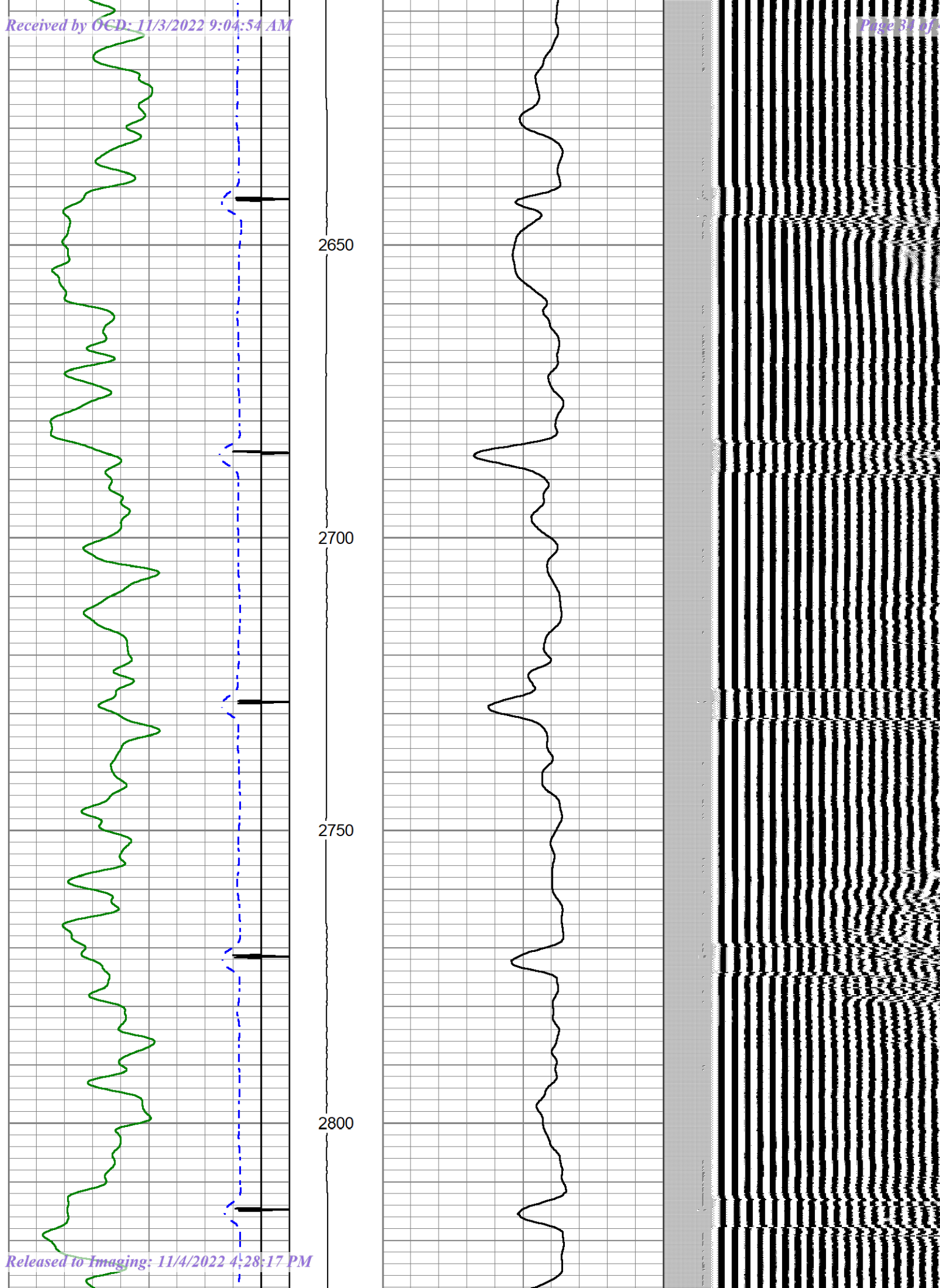


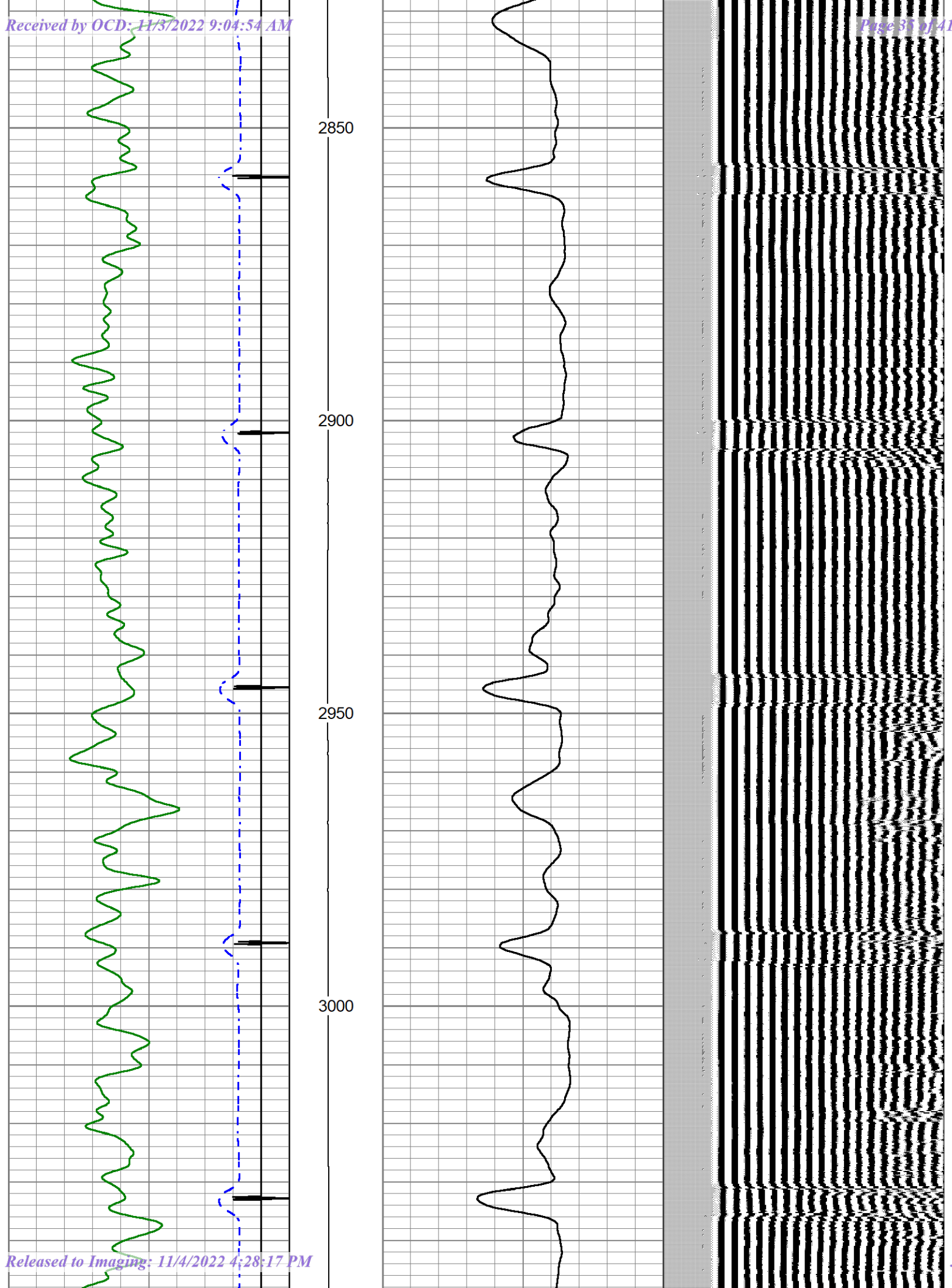


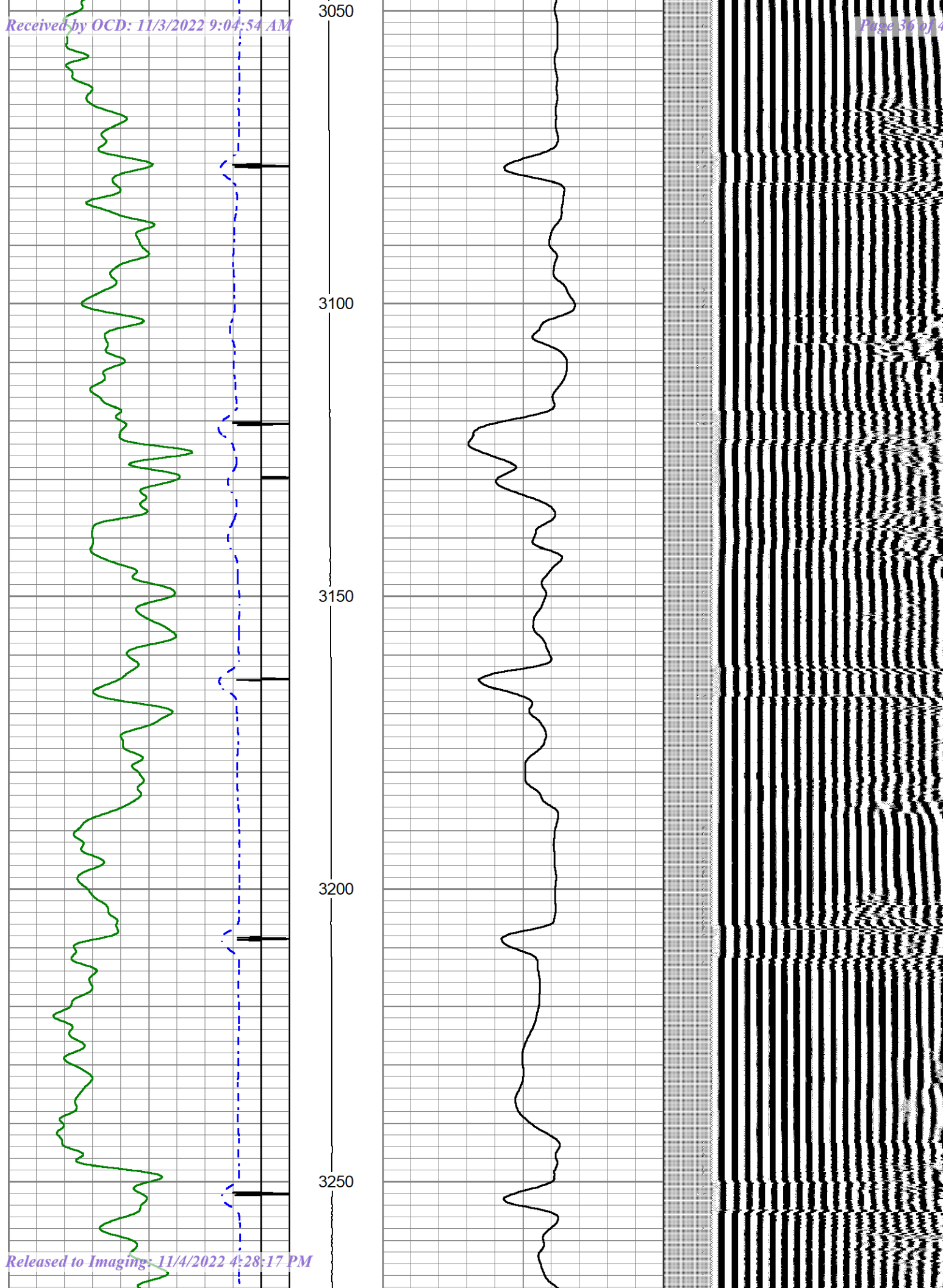


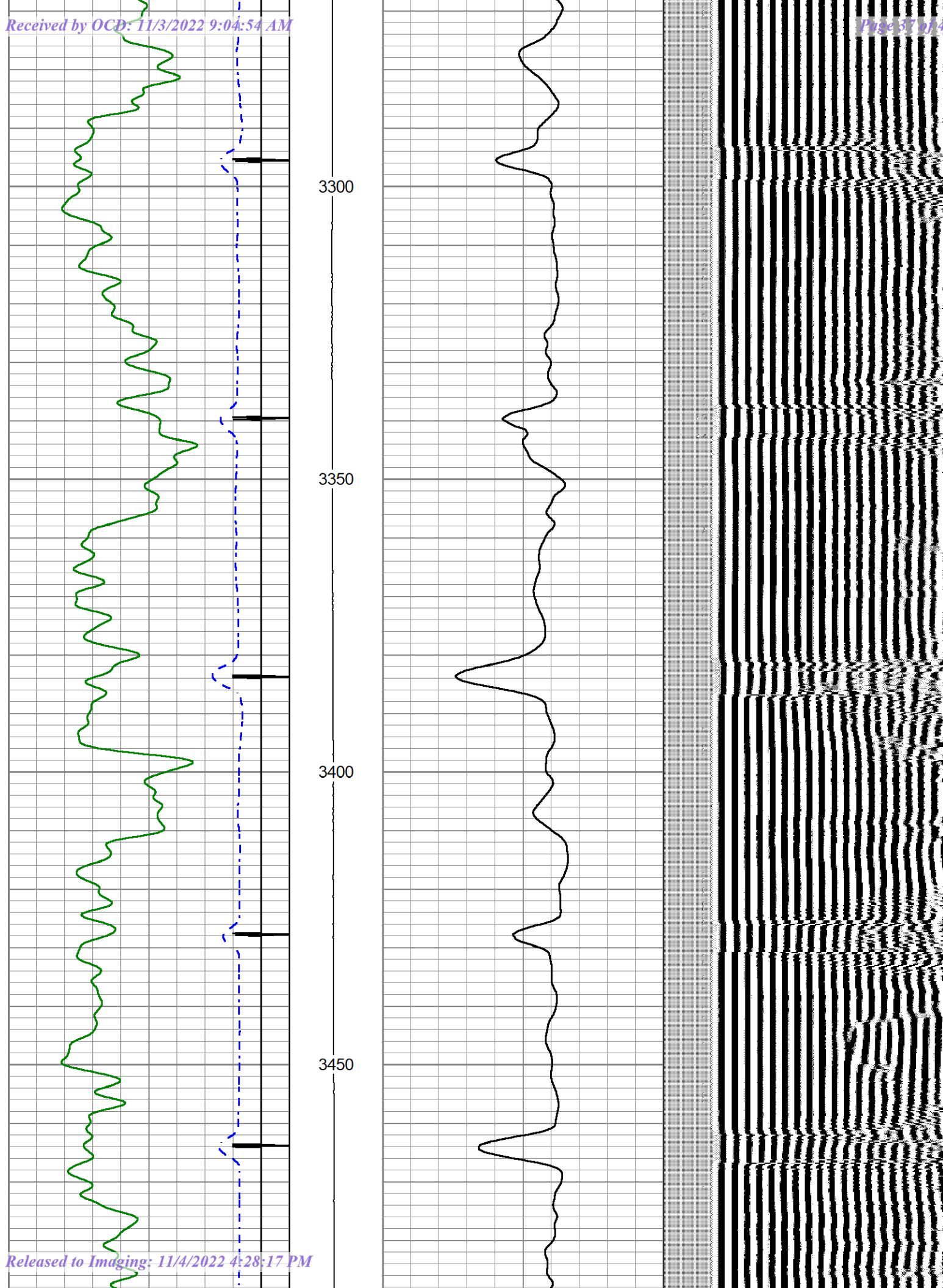


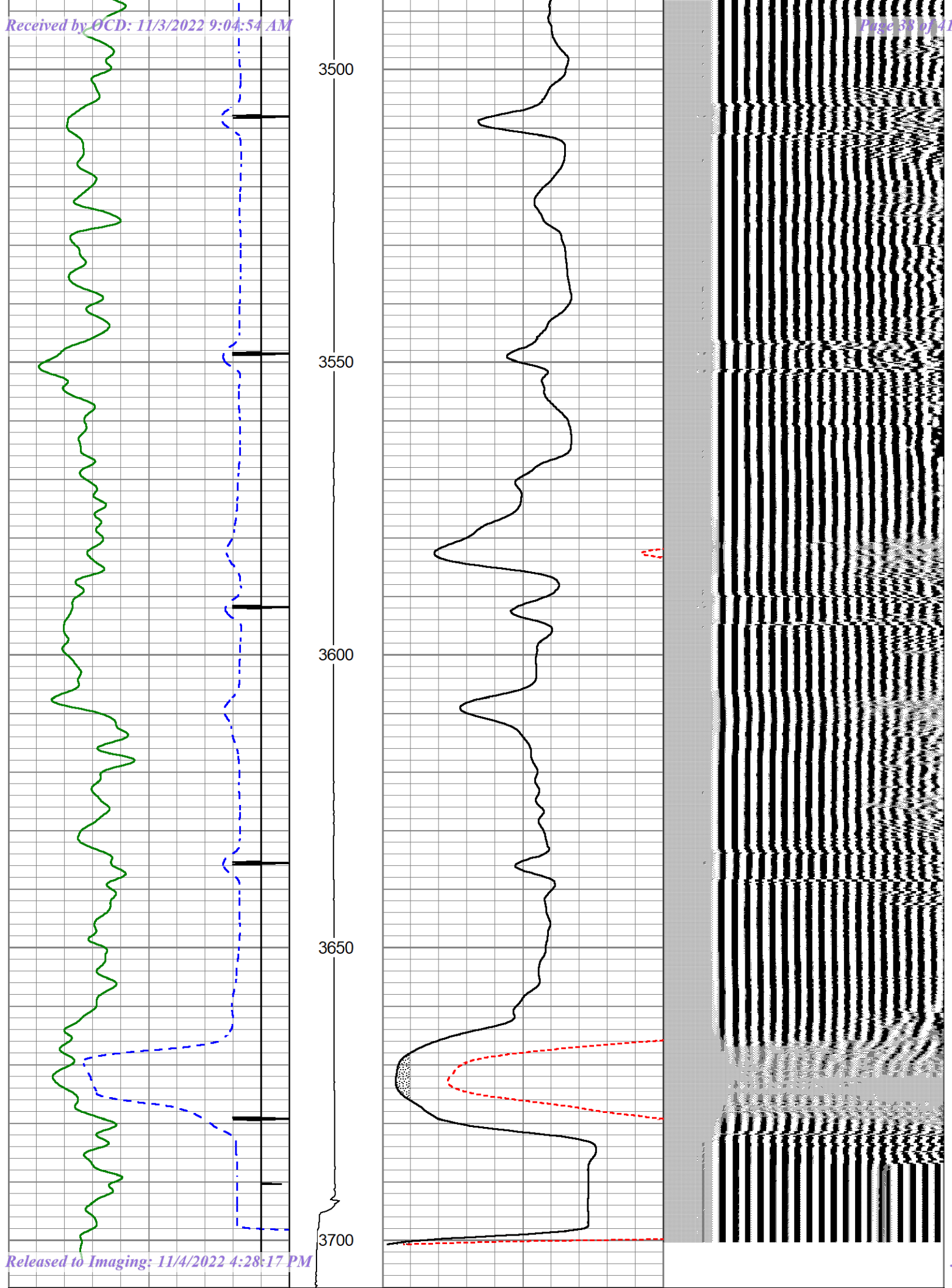












345	TRAVEL TIME (usec)	245	LTEN	0	AMP AMPLITUDE (mV)	20	200	VDL (usec)	1200
9	Collar Locator	-1	0	(lb)2000	0	AMPLITUDE (mV)	100		
0	Gamma Ray (GAPI)	180							

Calibration Report						
Database File	jicarilla 98 #11.db					
Dataset Pathname	pass4					
Dataset Creation	Fri Oct 21 10:31:56 2022					
Gamma Ray Calibration Report						
Serial Number:	110774					
Tool Model:	Probe275Gr					
Performed:	Thu Jun 2 10:38:09 2022					
Calibrator Value:	1.0	GAPI				
Background Reading:	0.0	cps				
Calibrator Reading:	1.0	cps				
Sensitivity:	0.7000	GAPI/cps				
Segmented Cement Bond Log Calibration Report						
Serial Number:	1308-02					
Tool Model:	Probe					
Calibration Casing Diameter:	4.500	in				
Calibration Depth:	137.800	ft				
Master Calibration, performed Fri Oct 21 10:07:24 2022:						
	Raw (v)		Calibrated (mv)		Results	
	Zero	Cal	Zero	Cal	Gain	Offset
3'	0.000	1.015	0.000	81.196	79.996	-0.012
CAL	0.003	1.195				
5'	-0.005	0.502	0.000	81.196	160.417	0.723
SUM						
S1	-0.004	0.985	0.000	100.000	101.073	0.433
S2	0.000	1.135	0.000	100.000	88.134	-0.009
S3	0.000	1.258	0.000	100.000	79.491	-0.006
S4	0.000	1.173	0.000	100.000	85.278	-0.002
S5	0.000	1.064	0.000	100.000	93.983	-0.014
S6	0.000	0.964	0.000	100.000	103.765	-0.003
S7	0.000	0.931	0.000	100.000	107.470	-0.011
S8	0.000	0.927	0.000	100.000	107.936	-0.011
Internal Reference Calibration, performed Wed Oct 5 11:57:18 2016:						
	Raw (v)		Calibrated (v)		Results	
	Zero	Cal	Zero	Cal	Gain	Offset
CAL	0.000	0.000	0.003	1.195	1.000	0.000
Air Zero Calibration, performed Mon Feb 11 11:45:57 2019:						
	Raw (v)		Calibrated (v)		Results	
	Zero		Zero			Offset

Released to Imaging: 11/4/2022 4:28:17 PM

2'	0.000	0.000	0.000
5'	0.000	0.000	0.000
SUM			
S1	0.000	0.000	0.000
S2	0.000	0.000	0.000
S3	0.000	0.000	0.000
S4	0.000	0.000	0.000
S5	0.000	0.000	0.000
S6	0.000	0.000	0.000
S7	0.000	0.000	0.000
S8	0.000	0.000	0.000

District I
1625 N. French Dr., Hobbs, NM 88240
Phone:(575) 393-6161 Fax:(575) 393-0720
District II
811 S. First St., Artesia, NM 88210
Phone:(575) 748-1283 Fax:(575) 748-9720
District III
1000 Rio Brazos Rd., Aztec, NM 87410
Phone:(505) 334-6178 Fax:(505) 334-6170
District IV
1220 S. St Francis Dr., Santa Fe, NM 87505
Phone:(505) 476-3470 Fax:(505) 476-3462

State of New Mexico
Energy, Minerals and Natural Resources
Oil Conservation Division
1220 S. St Francis Dr.
Santa Fe, NM 87505

CONDITIONS

Action 155907

CONDITIONS

Operator: MorningStar Operating LLC 400 W 7th St Fort Worth, TX 76102	OGRID: 330132
	Action Number: 155907
	Action Type: [C-103] Sub. Plugging (C-103P)

CONDITIONS

Created By	Condition	Condition Date
mkuehling	well plugged 10/26/22	11/4/2022