

Submit 1 Copy To Appropriate District

Office

District I - (575) 393-6161

1625 N. French Dr., Hobbs, NM 88240

District II - (575) 748-1283

811 S. First St., Artesia, NM 88210

District III - (505) 334-6178

1000 Rio Brazos Rd., Aztec, NM 87410

District IV - (505) 476-3460

1220 S. St. Francis Dr., Santa Fe, NM

87505

State of New Mexico  
Energy, Minerals and Natural Resources

Form C-103

Revised August 1, 2011

OIL CONSERVATION DIVISION  
1220 South St. Francis Dr.  
Santa Fe, NM 87505

WELL API NO. 30-025-08441
5. Indicate Type of Lease STATE X FEE
6. State Oil & Gas Lease No.
7. Lease Name or Unit Agreement Name STATE 1-30
8. Well Number 001
9. OGRID Number
10. Pool name or Wildcat HIGHTOWER E. PENN (UPPER)

SUNDRY NOTICES AND REPORTS ON WELLS  
(DO NOT USE THIS FORM FOR PROPOSALS TO DRILL OR TO DEEPEN OR PLUG BACK TO A DIFFERENT RESERVOIR. USE "APPLICATION FOR PERMIT" (FORM C-101) FOR SUCH PROPOSALS.)

1. Type of Well: Oil Well X Gas Well Other

2. Name of Operator  
MARK L. SHIDLER, INC.

3. Address of Operator

4. Well Location

Unit Letter B : 660 feet from the NORTH line and 1980 feet from the EAST line  
Section 30 Township 12S Range 34E NMPM LEA County

11. Elevation (Show whether DR, RKB, RT, GR, etc.)  
4,203' - GR

## 12. Check Appropriate Box to Indicate Nature of Notice, Report or Other Data

## NOTICE OF INTENTION TO:

PERFORM REMEDIAL WORK ☐ PLUG AND ABANDON X  
TEMPORARILY ABANDON ☐ CHANGE PLANS ☐  
PULL OR ALTER CASING ☐ MULTIPLE COMPL ☐  
DOWNHOLE COMMINGLE ☐

OTHER: ☐

## SUBSEQUENT REPORT OF:

REMEDIAL WORK ☐ ALTERING CASING ☐  
COMMENCE DRILLING OPNS. ☐ P AND A  
CASING/CEMENT JOB ☐

OTHER:

13. Describe proposed or completed operations. (Clearly state all pertinent details, and give pertinent dates, including estimated date of starting any proposed work). SEE RULE 19.15.7.14 NMAC. For Multiple Completions: Attach wellbore diagram of proposed completion or recompletion.

- 1) SET 7" CIBP @ 9,900'; CIRC. WELL W/ M.L.F.; PUMP (25) SXS. CLASS "H" CMT. @ 9,900'-9,800'.
- 2) PUMP (45) SXS. CLASS "C" CMT. @ 8,290'-8110'.
- 3) PUMP (45) SXS. CLASS "C" CMT. @ 7,585'-7415'.
- 4) PERF. X ATTEMPT TO SQZ. (70) SXS. CLASS "C" CMT. @ 5,675'-5,525'; WOC X TAG TOC.
- 5) CUT X PULL 7" CSG. @ +/-4,130'.
- P&S** 6) PUMP (60) SXS. CLASS "C" CMT. @ 4,200'-4,060' (7" CSG. STUB, 9-5/8" CSG. SHOE); WOC X TAG TOC.
- 7) PUMP (55) SXS. CLASS "C" CMT. @ 1,960'-1,840' (T/SALT); WOC X TAG TOC.
- 8) PUMP (50) SXS. CLASS "C" CMT. @ 344'-244' (13-3/8" CSG. SHOE); WOC X TAG TOC.
- P&S** 9) CIRC. (25) SXS. CLASS "C" CMT. @ 6xx'. **P&S 100 sx Class C 100'-3'**
- 10) DIG OUT X CUT OFF WELLHEAD 3' B.G.L.; WELD ON STEEL PLATE TO CSGS. X INSTALL BELOW GROUND DRY HOLE MARKER.

DURING THIS PROCEDURE WE PLAN TO USE THE CLOSED-LOOP SYSTEM W/ A STEEL TANK AND HAUL CONTENTS TO THE REQUIRED DISPOSAL, PER OCD RULE 19.15.17.

4" diameter 4' tall Above Ground Marker

SEE ATTACHED CONDITIONS  
OF APPROVAL

I hereby certify that the information above is true and complete to the best of my knowledge and belief.

SIGNATURE

TITLE: Operations Manager

DATE: 10/11/22

Type or print name: Mike Fenton  
For State Use Only

E-mail address: mfenton@marklshidlerinc.com

PHONE: 713-481-6487

APPROVED BY: Kerry Fortner

TITLE: Compliance Officer A

DATE: 11/4/22



**CONDITIONS OF APPROVAL  
FOR PLUGGING AND ABANDONMENT  
OCD - Southern District**

The following is a guide or checklist in preparation of a plugging program, this is not all inclusive and care must be exercised in establishing special plugging programs in unique and unusual cases, Notify NMOCD District Office I (Hobbs) at **(575)-263-6633** at least 24 hours before beginning work. After MIRU rig will remain on well until it is plugged to surface. OCD is to be notified before rig down.

**Company representative will be on location during plugging procedures.**

1. A notice of intent to plug and abandon a wellbore is required to be approved before plugging operations are conducted. A cement evaluation tool is required in order to ensure isolation of producing formations, protection of water and correlative rights. A cement bond log or other accepted cement evaluation tool is to be provided to the division for evaluation if one has not been previously run or if the well did not have cement circulated to surface during the original casing cementing job or subsequent cementing jobs. Insure all bradenheads have been exposed, identified and valves are operational prior to rig up.
2. Closed loop system is to be used for entire plugging operation. Upon completion, contents of steel pits are to be hauled to a permitted disposal location.
3. Trucking companies being used to haul oilfield waste fluids to a disposal - commercial or private- shall have an approved NMOCD C-133 permit. A copy of this permit shall be available in each truck used to haul waste products. It is the responsibility of the operator as well as the contractor, to verify that this permit is in place prior to performing work. Drivers shall be able to produce a copy upon request of an NMOCD Field inspector.
4. Filing a subsequent C-103 will serve as notification that the well has been plugged.
5. A final C-103 shall be filed (and a site inspection by NMOCD Inspector to determine if the location is satisfactorily cleaned, all equipment, electric poles and trash has been removed to Meet NMOCD standards) before bonding can be released.
6. If work has not begun within 1 Year of the approval of this procedure, an extension request must be file stating the reason the well has not been plugged.
7. Squeeze pressures are not to exceed 500 psi, unless approval is given by NMOCD.
8. Produced water will not be used during any part of the plugging operation.
9. Mud laden fluids must be placed between all cement plugs mixed at 25 sacks per 100 bbls of water.
10. All cement plugs will be a minimum of 100' in length or a minimum of 25 sacks of cement, whichever is greater. 50' of calculated cement excess required for inside casing plugs and 100% calculated cement excess required on outside casing plugs.
11. Class 'C' cement will be used above 7500 feet.
12. Class 'H' cement will be used below 7500 feet.
13. A cement plug is required to be set 50' above and 50' below, casing stubs, DV tools, attempted casing cut offs, cement tops outside casing, salt sections and anywhere the casing is perforated, these plugs require a 4 hour WOC and then will be tagged
14. All Casing Shoes Will Be Perforated 50' below shoe depth and Attempted to be Squeezed, cement needs to be 50' above and 50' Below Casing Shoe inside the Production Casing.
16. When setting the top out cement plug in production, intermediate and surface casing, wellbores should remain full at least 30 minutes after plugs are set
17. A CIBP is to be set within 100' of production perforations, capped with 100' of cement, WOC 4 hours and tag.
18. A CIBP with 35' of cement may be used in lieu of the 100' plug if set with a bailer. This plug will be placed within 100' of the top perforation, (WOC 4 hrs and tag).

19. No more than 3000' is allowed between cement plugs in cased hole and 2000' in open hole.
20. Some of the Formations to be isolated with cement plugs are: These plugs to be set to isolate formation tops
- A) Fusselman
  - B) Devonian
  - C) Morrow
  - D) Wolfcamp
  - E) Bone Springs
  - F) Delaware
  - G) Any salt sections
  - H) Abo
  - I) Glorieta
  - J) Yates.
  - K) Potash---(In the R-111-P Area (Potash Mine Area),  
A solid cement plug must be set across the salt section. Fluid used to mix the cement shall be saturated with the salts that are common to the section penetrated and in suitable proportions, not more than 3% calcium chloride (by weight of cement) will be considered the desired mixture whenever possible, WOC 4 hours and tag, this plug will be 50' below the bottom and 50' above the top of the Formation.
21. If cement does not exist behind casing strings at recommended formation depths, the casing can be cut and pulled with plugs set at recommended depths. If casing is not pulled, perforations will be shot and cement squeezed behind casing, WOC and tagged. These plugs will be set 50' below formation bottom to 50' above formation top inside the casing.

### **DRY HOLE MARKER REQUIREMENTS**

The operator shall mark the exact location of the plugged and abandoned well with a steel marker not less than four inches in diameter, 3' below ground level with a plate of at least ¼" welded to the top of the casing and the dry hole marker welded on the plate with the following information welded on the dry hole marker:

1. Operator name
2. Lease and Well Number
3. API Number
4. Unit letter
5. Quarter Section (feet from the North, South, East or West)
6. Section, Township and Range
7. Plugging Date
8. County

### **SPECIAL CASES -----AGRICULTURE OR PRARIE CHICKEN BREEDING AREAS**

In these areas, a below ground marker is required with all pertinent information mentioned above on a plate, set 3' below ground level, a picture of the plate will be supplied to NMOCD for record, the exact location of the marker (longitude and latitude by GPS) will be provided to NMOCD (We typically require a current survey to verify the GPS)

### **SITE REMEDIATION DUE WITHIN ONE YEAR OF WELL PLUGGING COMPLETION**

Submit 1 Copy To Appropriate District

Office

District I - (575) 393-6161

1625 N. French Dr., Hobbs, NM 88240

District II - (575) 748-1283

811 S. First St., Artesia, NM 88210

District III - (505) 334-6178

1000 Rio Brazos Rd., Aztec, NM 87410

District IV - (505) 476-3460

1220 S. St. Francis Dr., Santa Fe, NM

87505

State of New Mexico  
Energy, Minerals and Natural Resources

Form C-103

Revised August 1, 2011

OIL CONSERVATION DIVISION  
1220 South St. Francis Dr.  
Santa Fe, NM 87505

WELL API NO. 30-025-08441
5. Indicate Type of Lease STATE X FEE
6. State Oil & Gas Lease No.
7. Lease Name or Unit Agreement Name STATE 1-30
8. Well Number 001
9. OGRID Number
10. Pool name or Wildcat HIGHTOWER E. PENN (UPPER)

SUNDRY NOTICES AND REPORTS ON WELLS  
(DO NOT USE THIS FORM FOR PROPOSALS TO DRILL OR TO DEEPEN OR PLUG BACK TO A DIFFERENT RESERVOIR. USE "APPLICATION FOR PERMIT" (FORM C-101) FOR SUCH PROPOSALS.)

1. Type of Well: Oil Well X Gas Well Other

2. Name of Operator  
MARK L. SHIDLER, INC.

3. Address of Operator

4. Well Location

Unit Letter B : 660 feet from the NORTH line and 1980 feet from the EAST line  
Section 30 Township 12S Range 34E NMPM LEA County

11. Elevation (Show whether DR, RKB, RT, GR, etc.)  
4,203' - GR

## 12. Check Appropriate Box to Indicate Nature of Notice, Report or Other Data

## NOTICE OF INTENTION TO:

PERFORM REMEDIAL WORK ☐ PLUG AND ABANDON X  
TEMPORARILY ABANDON CHANGE PLANS ☐  
PULL OR ALTER CASING ☐ MULTIPLE COMPL ☐  
DOWNHOLE COMMINGLE ☐

OTHER: ☐

## SUBSEQUENT REPORT OF:

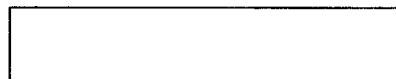
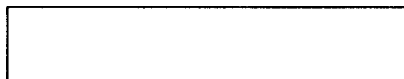
REMEDIAL WORK ☐ ALTERING CASING ☐  
COMMENCE DRILLING OPNS. ☐ P AND A  
CASING/CEMENT JOB ☐

OTHER:

13. Describe proposed or completed operations. (Clearly state all pertinent details, and give pertinent dates, including estimated date of starting any proposed work). SEE RULE 19.15.7.14 NMAC. For Multiple Completions: Attach wellbore diagram of proposed completion or recompletion.

- 1) SET 7" CIBP @ 9,900'; CIRC. WELL W/ M.L.F.; PUMP (25) SXS. CLASS "H" CMT. @ 9,900'-9,800'.
- 2) PUMP (45) SXS. CLASS "C" CMT. @ 8,290'-8110'.
- 3) PUMP (45) SXS. CLASS "C" CMT. @ 7,585'-7415'.
- 4) PERF. X ATTEMPT TO SQZ. (70) SXS. CLASS "C" CMT. @ 5,675'-5,525'; WOC X TAG TOC.
- 5) CUT X PULL 7" CSG. @ +/-4,130'.
- 6) PUMP (60) SXS. CLASS "C" CMT. @ 4,200'-4,060' (7" CSG.STUB, 9-5/8" CSG.SHOE); WOC X TAG TOC.
- 7) PUMP (55) SXS. CLASS "C" CMT. @ 1,960'-1,840 (T/SALT); WOC X TAG TOC.
- 8) PUMP (50) SXS. CLASS "C" CMT. @ 344'-244' (13-3/8" CSG.SHOE); WOC X TAG TOC.
- 9) CIRC. (25) SXS. CLASS "C" CMT. @ 63'-3'.
- 10) DIG OUT X CUT OFF WELLHEAD 3' B.G.L.; WELD ON STEEL PLATE TO CSGS. X INSTALL BELOW GROUND DRY HOLE MARKER.

DURING THIS PROCEDURE WE PLAN TO USE THE CLOSED-LOOP SYSTEM W/ A STEEL TANK AND HAUL CONTENTS TO THE REQUIRED DISPOSAL, PER OCD RULE 19.15.17.



I hereby certify that the information above is true and complete to the best of my knowledge and belief.

SIGNATURE

TITLE:

Operations Manager

DATE: 10/11/22

Type or print name:  
For State Use Only

MIKE FENTON

E-mail address:

mfenton@markl  
shidlerinc.com

PHONE:

713-481-6487

APPROVED BY:

TITLE

DATE





MARK L. SHIDLER, INC.

CURRENT

30-025-08441

## Final Installation Report

Well Name	NM State #1-30	Elevation	11
Field	Hightower East Penn.	TD/PBTD	13073/10,350'
Formation	Pennsylvania	Perforations	9912'-12924'
Location	660' FNL & 1980' FEL 30- T12S-R34E		
County, State	Lea County, NM	Drawn by	GBG
Date	9/20/2022	Page	1

TUBULAR	Size	Weight	Grade	Thread	Depth
Surface Casing	13-3/8"	60	H-40	ST&C	294
Intermediate Casing	9-5/8"	36 & 32	J-55	LT&C	4130
Production Casing	7"	26, 29 & 32	J-55	LT&C	13102

## NOTES

## CASING AND CEMENTING RECORD

## Surface

Drilled 17-1/2" hole to 294'. Set 13-3/8", 60#, H-40, ST&C Csg. to 294'. Cemented w/300 sacks of Class \_\_\_ cement. Circ. To Surf.

## Intermediate

Drilled 12-1/2" hole to 4130'. Set 9-5/8", 32# & 36#, J-55, LT&C Csg. to 4,130'. Cemented w/1,750 sacks of Class \_\_\_ cement. Circ. To Surf.

## Production

Drilled 8-3/4" hole to 13102'. Set 7", 26# & 29#, J-55, LT&C Csg. to 13,102'. Cemented w/750 sacks of Class \_\_\_ cement. TOC: ???

CIBP: 10,350' w/5' CalSeal Plug on top (04/16/1962).

CIBP: 12,844'.

TBG. Fish in well at 12860'.

2-3/8" TBG. with packer.

## PERFORATING AND STIMULATION RECORD

Perf'd.: 12,899'-12,924', 25', 2 SPF, 50 Holes. Abd. (16Apr1961).

Acidized w/10M Gals 15% HCl.

Perf'd.: 10,218'-10,236', 18', 2SPF, 36 holes & 10,250'-10,258', 8', 2SPF, 16 holes (Lwr. Penn).

Acidized w/3M Gals. 15% HCl (02/1959).

Acidized w/12M Gals. 15% HCl w/70 balls in 3 stages (05/18/1959).

Acidized w/36 Bbbs. 15% HCl & flushed w/70 BFSW (11/28/2006).

Perf'd.: 9,912'-9,964', 18', 1SPF, 18 holes. (12/02/1988), (Upr. Penn).

Acidized w/500 Gals. 15% HCl & 80 Gals. NeFe HCl, flushed w/388 BFSW.

## TUBING RECORD

Description	Length	Depth
Elev.:	11'	0'
(295) Jts. 2-7/8" Tbg.	9513.07'	11'
(1) 2-7/8"X7" TAC	2.85'	9524'
(23) Jts. 2-7/8" Tbg.	751.78'	9527'
(1) 2-7/8" SN	1.10'	10,279'
(1) 2-7/8" PS	4.00'	10,280'
(1) Jt. 2-7/8" Tbg. w/BPOB as MA	30.50'	10,284'
EOT:	10,314.30'	10,314'

## ROD RECORD

Description	Length	Depth
(1) 1-1/2"X26" PR		
w/11/2"X13/4"X12' Lnr. & SB	26'	
(119) 7/8" Steel w/o guides	2975'	
(185) 3/4" Steel w/o guides	4625'	
(82) 1/2" Steel w/guides	2050'	
(3) 3/4" Steel w/o guides	75'	
(2) new Norris 97 3/4" Steel w/o guides	50'	
4) 1-1/4" Wt. Bars	100'	
(1) 25-125RHBM20-6-4 (___" stroke)	24'	

## PUMPING UNIT AND PUMPING PARAMETERS:

Lufkin 320D-213-120-102-85-66. SN: AN7649A-230434

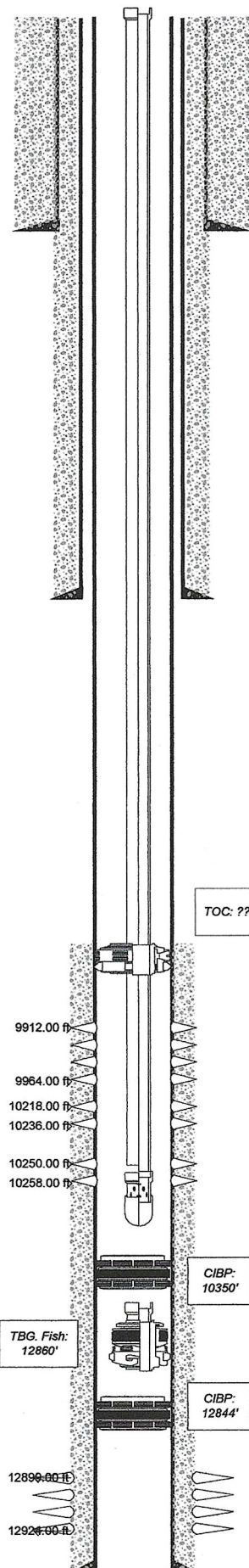
SL: 85"

SPM: 5

Vol.: 31 BF @ 100% Eff.; 25 BF @ 80% Eff.

This document is confidential correspondence between our company and its customer. It may not be reproduced in any form, in whole or in part, by any means including any electronic format, nor its contents disclosed to anyone but our employees and employees of our customer.

powerDRAW.net



MARK L. SHIDLER, INC.

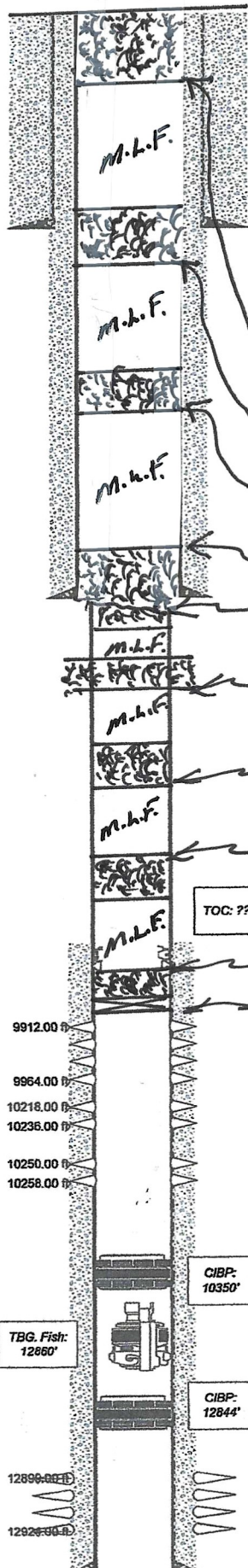
PROPOSED

30-025-08441

## Final Installation Report

Well Name	NM State #1-30		Elevation	11	
Field	Hightower East Penn.		TD/PBTD	13073/10,350'	
Formation	Pennsylvania		Perforations	9912'-12924'	
County, State	Lea County, NM		Drawn by	GBG	Date 9/20/2022 Page 1

TUBULAR	Size	Weight	Grade	Thread	Depth
Surface Casing	13-3/8"	60	H-40	ST&C	294
Intermediate Casing	9-5/8"	36 & 32	J-55	LT&C	4130
Production Casing	7"	26, 29 & 32	J-55	LT&C	13102



CIRC. (25) SXS. @ 63'-3'

Pump (50) SXS. @ 344'-244'-TAG.

Pump (55) SXS. @ 1,960'-1,840'-TAG

Pump (60) SXS. @ 4,200'-4,060'-TAG

CUT 7" CSG @ +/- 4,130'

PERF. X SQZ. (70) SXS. @ 5,675'-5,525'-TAG

Pump (45) SXS. @ 7,585'-7,415'

Pump (45) SXS. @ 8,290'-8,110'

Pump (25) SXS. @ 9,900'-9,800'

SET 7" CIBP @ 9,900'

TOC: ??

CIBP: 10350'

CIBP: 12844'

TBG. Fish: 12860'

12899.00 ft

12924.00 ft



**District I**  
1625 N. French Dr., Hobbs, NM 88240  
Phone:(575) 393-6161 Fax:(575) 393-0720  
**District II**  
811 S. First St., Artesia, NM 88210  
Phone:(575) 748-1283 Fax:(575) 748-9720  
**District III**  
1000 Rio Brazos Rd., Aztec, NM 87410  
Phone:(505) 334-6178 Fax:(505) 334-6170  
**District IV**  
1220 S. St Francis Dr., Santa Fe, NM 87505  
Phone:(505) 476-3470 Fax:(505) 476-3462

**State of New Mexico**  
**Energy, Minerals and Natural Resources**  
**Oil Conservation Division**  
**1220 S. St Francis Dr.**  
**Santa Fe, NM 87505**

COMMENTS

Action 150572

COMMENTS

Operator: MARK L SHIDLER INC 1313 Campbell Road Houston, TX 77055	OGRID: 14096
	Action Number: 150572
	Action Type: [C-103] NOI Plug & Abandon (C-103F)

COMMENTS

Created By	Comment	Comment Date
plmartinez	DATA ENTRY PM	11/7/2022

**District I**  
1625 N. French Dr., Hobbs, NM 88240  
Phone:(575) 393-6161 Fax:(575) 393-0720  
**District II**  
811 S. First St., Artesia, NM 88210  
Phone:(575) 748-1283 Fax:(575) 748-9720  
**District III**  
1000 Rio Brazos Rd., Aztec, NM 87410  
Phone:(505) 334-6178 Fax:(505) 334-6170  
**District IV**  
1220 S. St Francis Dr., Santa Fe, NM 87505  
Phone:(505) 476-3470 Fax:(505) 476-3462

**State of New Mexico**  
**Energy, Minerals and Natural Resources**  
**Oil Conservation Division**  
**1220 S. St Francis Dr.**  
**Santa Fe, NM 87505**

CONDITIONS  
  
Action 150572

CONDITIONS

Operator: MARK L SHIDLER INC 1313 Campbell Road Houston, TX 77055	OGRID: 14096
	Action Number: 150572
	Action Type: [C-103] NOI Plug & Abandon (C-103F)

CONDITIONS

Created By	Condition	Condition Date
kfortner	See attached COA	11/4/2022