

Well Name: JICARILLA H	Well Location: T24N / R4W / SEC 5 / SESE /	County or Parish/State: RIO ARRIBA / NM
Well Number: 3	Type of Well: CONVENTIONAL GAS WELL	Allottee or Tribe Name: JICARILLA APACHE
Lease Number: JIC111	Unit or CA Name:	Unit or CA Number:
US Well Number: 300390561400S1	Well Status: Abandoned	Operator: SOUTHLAND ROYALTY COMPANY

Subsequent Report

Sundry ID: 2696615

Type of Submission: Subsequent Report	Type of Action: Plug and Abandonment
Date Sundry Submitted: 10/05/2022	Time Sundry Submitted: 12:42
Date Operation Actually Began: 09/27/2022	

**Actual Procedure:** MorningStar has plugged and abandoned the Jicarilla H #3 as of 10/03/2022. Attached are the Daily and Cement Reports, Final WBD, and CBL.

SR Attachments

Actual Procedure

Jicarilla\_H\_3\_PA\_Reports\_\_WBD\_\_CBL\_20221005124054.pdf

Well Name: JICARILLA H	Well Location: T24N / R4W / SEC 5 / SESE /	County or Parish/State: RIO ARRIBA / NM
Well Number: 3	Type of Well: CONVENTIONAL GAS WELL	Allottee or Tribe Name: JICARILLA APACHE
Lease Number: JIC111	Unit or CA Name:	Unit or CA Number:
US Well Number: 300390561400S1	Well Status: Abandoned	Operator: SOUTHLAND ROYALTY COMPANY

Operator

I certify that the foregoing is true and correct. Title 18 U.S.C. Section 1001 and Title 43 U.S.C. Section 1212, make it a crime for any person knowingly and willfully to make to any department or agency of the United States any false, fictitious or fraudulent statements or representations as to any matter within its jurisdiction. Electronic submission of Sundry Notices through this system satisfies regulations requiring a

Operator Electronic Signature: CONNIE BLAYLOCK

Signed on: OCT 05, 2022 12:41 PM

Name: SOUTHLAND ROYALTY COMPANY

Title: Regulatory Technician

Street Address: 400 W 7th St.

City: Forth Worth

State: TX

Phone: (817) 334-7882

Email address: CBLAYLOCK@MSPARTNERS.COM

Field

Representative Name: Amy Byars

Street Address:

City:

State:

Zip:

Phone:

Email address: abyars@mspartners.com

BLM Point of Contact

BLM POC Name: KENNETH G RENNICK

BLM POC Title: Petroleum Engineer

BLM POC Phone: 5055647742

BLM POC Email Address: krennick@blm.gov

Disposition: Accepted

Disposition Date: 10/05/2022

Signature: Kenneth Rennick

## **Morningstar Operating LLC**

### **Plug And Abandonment End Of Well Report**

#### **Jicarilla H #003**

990' FSL & 1090' FEL, Section 5, 24N, 04W

Rio Arriba County, NM / API 30-039-05614

#### **Work Summary:**

- 9/26/22** Made BLM and NMOCD P&A operations notifications at 9:00 AM MST.
- 9/27/22** Arrived on location and held safety meeting. R/U P&A rig. Checked well pressures: Tubing 0 psi, Casing: 145 psi, Bradenhead: 0 psi. Bled down well. N/U BOP and function tested. Set up equipment for 1-1/4" tubing. L/D 70 joints of 1-1/4" tubing. Secured and shut in well for the day.
- 9/28/22** Arrived on location and held safety meeting. Checked well pressures: Tubing 0 psi, Casing: 0 psi, Bradenhead: 0 psi. Bled down well. Finished laying down 1-1/4" tubing. 90 joints total, 1 perforated joint and 89 normal 1-1/4" joints. Changed out equipment for 2-3/8" tubing. P/U 5.5" casing scraper. TIH to 2782'. TOOH. L/D casing scraper and P/U 5.5 CR. TIH and set CR at 2750'. Secured and shut in well for the day.
- 9/29/22** Arrived on location and held safety meeting. Checked well pressures: Tubing 0 psi, Casing: 0 psi, Bradenhead: 0 psi. R/U cementing services. Successfully circulated hole with 30 bbls, pumped a total of 45 bbls. Attempted to pressure test casing but was unsuccessful, fluid communicated through Braden Head Valve. R/D cementing services. R/U wireline services. RIH and logged well. POOH and R/D wireline services. TIH to 2750'. R/U cementing services. Pumped plug #1 from 2750' to approximately 2461' to cover the Pictured Cliffs perforations and Fruitland formation top. R/D cementing services. L/D 10 Joints and TOOH. WOC 4 hours. TIH and tagged top of plug #1 at 2466'. Attempted to pressure test casing

but was unsuccessful, communicated through Braden Head Valve. R/U cementing services. Continued pumping plug #1 from 2466' to approximately 2171' to cover the Fruitland, Kirtland and Ojo Alamo formation tops. R/D cementing services. L/D 10 Joints and TOOH. Secured and shut in well for the day

**9/30/22** Arrived on location and held safety meeting. Checked well pressures: Tubing: 0 psi, Casing: 0 psi, Bradenhead: 0 psi. Bled down well. TIH and tagged top of plug #1 at 2146'. Attempted to pressure test casing but was unsuccessful. L/D 33 joints and TOOH. R/U wireline services. RIH and perforated at 1004'. POOH and R/D wireline. P/U 5.5" packer. TIH and set at 945'. Successfully established injection rate down tubing through packer and into perforations. 15 bbls, 2 bbls/min at 300 PSI. Unset packer and TOOH. Removed packer and installed a 5.5" CR. TIH and set CR at 981'. R/U cementers. Pumped cement through CR and into perforations at 1004'. Stung out of CR and pumped cement above CR to approximately 881'. R/D cementing services. LD 4 joints and TOOH. WOC 4 hours. TIH and tagged TOC at 759'. L/D 30 joints and TOOH. R/U wireline services. RIH and perforated at 155'. POOH and R/D wireline services. TIH with 5.5" packer and set at 125'. Successfully circulated water down tubing, through packer, into perforations at 155', and out Braden Head Valve. 15 bbls total. Attempted to pressure test casing above packer from 125' to surface but was unsuccessful. Unset packer and TOOH. Secured and shut in well for the day.

**10/3/22** Arrived on location and held safety meeting Checked well pressures: Tubing: 0 psi, Casing: 0 psi, Bradenhead: 0 psi. Bled down well. P/U 5.5" packer. TIH and set packer at 125'. Successfully circulated water down tubing, through packer, into perforations, and out Braden Head Valve with 3 bbls. Attempted to pressure test casing above packer but was unsuccessful. Unset packer and TOOH. P/U 5.5" CR. TIH and set CR at 131'. R/U cementing services. Pumped cement through CR, into perforations, and out Braden Head Valve. Stung out of CR and pumped cement to surface. R/D cementing services. R/D floor, ND BOP, and NU WH. WOC 4 hours. Performed wellhead cutoff. Cement was 5' low in 5.5" casing and 26' low in 9.6" casing. R/U cementing services. Pumped cement to surface in both casing strings. R/D cementing services. Installed P&A marker per regulations. R/D and MOL.

**Plug Summary:****Plug #1: (Pictured Cliffs Perforations. Pictured Cliffs, Kirtland, Fruitland and Ojo Alamo Fruitland formation top 2,750'-2,146', 58 Sacks Type III Cement)**

TIH and set CR at 2750'. R/U cementing services. Successfully circulated hole with 30 bbls, pumped a total of 45 bbls. Attempted to pressure test casing but was unsuccessful, fluid communicated through Braden Head Valve. R/D cementing services. TOOH for wireline. TIH to 2750'. R/U cementing services. Pumped plug #1 from 2750' to approximately 2461' to cover the Pictured Cliffs perforations and Fruitland formation top. WOC 4 hours. TIH and tagged top of plug #1 at 2466'. Attempted to pressure test casing but was unsuccessful, communicated through Braden Head Valve. R/U cementing services. Continued pumping plug #1 from 2466' to approximately 2171' to cover the Fruitland, Kirtland and Ojo Alamo formation tops. R/D cementing services. WOC overnight. TIH and tagged top of plug #1 at 2146'

**Plug #2: (Nacimiento Formation Top 1,004'-759', 40 Sacks Type III Cement)**

R/U wireline services. RIH and perforated at 1004'. POOH and R/D wireline. P/U 5.5" packer. TIH and set at 945'. Successfully established injection rate down tubing through packer and into perforations. 15 bbls, 2 bbls/min at 300 PSI. Unset packer and TOOH. Removed packer and installed a 5.5" CR. TIH and set CR at 981'. R/U cementers. Pumped cement through CR and into perforations at 1004'. Stung out of CR and pumped cement above CR to approximately 881' (30 sx below CR, 10 sx above CR). R/D cementing services. LD 4 joints and TOOH. WOC 4 hours. TIH and tagged TOC at 759'.

**Plug #3: (Surface Casing Shoe, 155' to surface', 71 Sacks Type III Cement [20 sx for top off])**

R/U wireline services. RIH and perforated at 155'. POOH and R/D wireline services. TIH with 5.5" packer and set at 125'. Successfully circulated water down tubing, through packer, into perforations at 155', and out Braden Head Valve. 15 bbls total. Attempted to pressure test casing above packer from 125 to surface but was unsuccessful. Unset packer and TOOH. Secured and shut in well for the day. P/U 5.5" packer. TIH and set packer at 125'. Successfully circulated water down tubing, through packer, into perforations, and out Braden Head Valve with 3 bbls. Attempted to pressure test casing above packer but was unsuccessful. Unset packer and TOOH. P/U

5.5" CR. TIH and set CR at 131'. R/U cementing services. Pumped cement through CR, into perforations, and out Braden Head Valve. Stung out of CR and pumped cement to surface (36 sx into CR, 15 sx above). R/D cementing services. WOC 4 hours. Performed wellhead cutoff. Cement was 5' low in 5.5" casing and 26' low in 9.6" casing. R/U cementing services. Pumped cement to surface in both casing strings.

## P &amp; A Daily Report



PO Box 538 Farmington, NM 87499 505.327.7301

Company:	Morningstar Operating
Well Name:	Jicarilla H #003
API #:	30-039-05614
Date:	9/27/2022

**WORK SUMMARY**

Arrived on location and held safety meeting. R/U P&A rig. Checked well pressures (see pressures below). Bled down well. N/D wellhead. Waited on hardware. N/U BOP and function tested. Set up equipment for 1-1/4" tubing. L/D 70 joints of 1-1/4" tubing. Secured and shut in well for the day.

**PLUG SUMMARY**

<u>Plug No</u>	<u>Plug Depth</u>	<u>Sacks of Cement Used</u>
Plug 1 _____ To _____	_____	_____
Plug 2 _____ To _____	_____	_____
Plug 3 _____ To _____	_____	_____
Plug 4 _____ To _____	_____	_____
Plug 5 _____ To _____	_____	_____
Plug 6 _____ To _____	_____	_____
Plug 7 _____ To _____	_____	_____
Plug 8 _____ To _____	_____	_____
Plug 9 _____ To _____	_____	_____

**BRIDGE PLUG/CEMENT RETAINER SUMMARY**

<u>Depth Set</u>
_____
_____
_____

**WELL PRESSURES**

Tubing	_____ 0 psi
Casing	_____ 145 psi
Bradenhead	_____ 0 psi

## P &amp; A Daily Report



PO Box 538 Farmington, NM 87499 505.327.7301

Company:	Morningstar Operating
Well Name:	Jicarilla H #003
API #:	30-039-05614
Date:	9/28/2022

**WORK SUMMARY**

Arrived on location and held safety meeting. R/U P&A rig. Checked well pressures (see pressures below). Bled down well. Finished laying down 1-1/4" tubing. 90 joints total, 1 perforated joint and 89 normal 1-1/4" joints. Changed out equipment for 2-3/8" tubing. P/U 5.5" casing scraper. TIH to 2782'. TOO. L/D casing scraper and P/U 5.5 CR. TIH and set CR at 2750'. Secured and shut in well for the day.

**PLUG SUMMARY**

<u>Plug No</u>	<u>Plug Depth</u>	<u>Sacks of Cement Used</u>
Plug 1	To	
Plug 2	To	
Plug 3	To	
Plug 4	To	
Plug 5	To	
Plug 6	To	
Plug 7	To	
Plug 8	To	
Plug 9	To	

**BRIDGE PLUG/CEMENT RETAINER SUMMARY**

<u>Depth Set</u>
2750'

**WELL PRESSURES**

Tubing	0 psi
Casing	0 psi
Bradenhead	0 psi



## P &amp; A Daily Report



PO Box 538 Farmington, NM 87499 505.327.7301

Company:	Morningstar Operating
Well Name:	Jicarilla H #003
API #:	30-039-05614
Date:	9/29/2022

**WORK SUMMARY**

Arrived on location and held safety meeting. Checked well pressures (see pressures below). Bled down well. R/U cementing services. Successfully circulated hole with 30 bbls, pumped a total of 45 bbls. Attempted to pressure test casing but was unsuccessful, fluid communicated through Braden Head Valve. R/D cementing services. R/U wireline services. RIH and logged well. POOH and R/D wireline services. TIH to 2750'. R/U cementing services. Pumped plug #1 from 2750' to approximately 2461' to cover the Pictured Cliffs perforations and Fruitland formation top. R/D cementing services. L/D 10 Joints and TOOH. WOC 4 hours. TIH and tagged top of plug #1 at 2466'. Attempted to pressure test casing but was unsuccessful, communicated through Braden Head Valve. R/U cementing services. Continued pumping plug #1 from 2466' to approximately 2171' to cover the Fruitland, Kirtland and Ojo Alamo formation tops. R/D cementing services. L/D 10 Joints and TOOH. Secured and shut in well for the day.

**PLUG SUMMARY**

Plug No	Plug Depth	Sacks of Cement Used
Plug 1 2750' To 2171'		58 sx Type III Cement
Plug 2	To	
Plug 3	To	
Plug 4	To	
Plug 5	To	
Plug 6	To	
Plug 7	To	
Plug 8	To	
Plug 9	To	

**BRIDGE PLUG/CEMENT RETAINER SUMMARY**

Depth Set
2750'

**WELL PRESSURES**

Tubing	0 psi
Casing	0 psi
Bradenhead	0 psi

## P &amp; A Daily Report

**Drake**

WELL SERVICE INC.



PO Box 538 Farmington, NM 87499 505.327.7301

Company: Morningstar Operating

Well Name: Jicarilla H #003

API #: 30-039-05614

Date: 9/30/2022

**WORK SUMMARY**

Arrived on location and held safety meeting. TIH and tagged top of plug #1 at 2146'. Attempted to pressure test casing but was unsuccessful. L/D 33 joints and TOOH. R/U wireline services. RIH and perforated at 1004'. POOH and R/D wireline. P/U 5.5" packer. TIH and set at 945'. Successfully established injection rate down tubing through packer and into perforations. 15 bbls, 2 bbls/min at 300 PSI. Unset packer and TOOH. Removed packer and installed a 5.5" CR. TIH and set CR at 981'. R/U cementers. Pumped cement through CR and into perforations at 1004'. Stung out of CR and pumped cement above CR to approximately 881'. R/D cementing services. LD 4 joints and TOOH. WOC 4 hours. TIH and tagged TOC at 759'. L/D 30 joints and TOOH. R/U wireline services. RIH and perforated at 155'. POOH and R/D wireline services. TIH with 5.5" packer and set at 125'. Successfully circulated water down tubing, through packer, into perforations at 155', and out Braden Head Valve. 15 bbls total. Attempted to pressure test casing above packer from 125 to surface but was unsuccessful. Unset packer and TOOH. Secured and shut in well for the day.

**PLUG SUMMARY**

<u>Plug No</u>		<u>Plug Depth</u>	<u>Sacks of Cement Used</u>
Plug 1	2750'	To 2146'	58 sx Type III Cement
Plug 2	1004'	To 759'	40 sx Type III Cement (30 below CR, 10 above)
Plug 3		To	
Plug 4		To	
Plug 5		To	
Plug 6		To	
Plug 7		To	
Plug 8		To	
Plug 9		To	

## BRIDGE PLUG/CEMENT RETAINER SUMMARY

<u>Depth Set</u>
2750'
945'

## WELL PRESSURES

Tubing	0 psi
Casing	0 psi
Bradenhead	0 psi

## P &amp; A Daily Report



PO Box 538 Farmington, NM 87499 505.327.7301

Company:	Morningstar Operating
Well Name:	Jicarilla H #003
API #:	30-039-05614
Date:	10/3/2022

**WORK SUMMARY**

Arrived on location and held safety meeting. Checked well pressures (see pressures below). Bled down well. P/U 5.5" packer. TIH and set packer at 125'. Successfully circulated water down tubing, through packer, into perforations, and out Braden Head Valve with 3 bbls. Attempted to pressure test casing above packer but was unsuccessful. Unset packer and TOOH. P/U 5.5" CR. TIH and set CR at 131'. R/U cementing services. Pumped cement through CR, into perforations, and out Braden Head Valve. Stung out of CR and pumped cement to surface. R/D cementing services. R/D floor, ND BOP, and NU WH. WOC 4 hours. Performed wellhead cutoff. Cement was 5' low in 5.5" casing and 26' low in 9.6" casing. R/U cementing services. Pumped cement to surface in both casing strings. R/D cementing services. Installed P&A marker per regulations. R/D and MOL.

**PLUG SUMMARY**

<u>Plug No</u>		<u>Plug Depth</u>		<u>Sacks of Cement Used</u>
Plug 1	2750'	To	2146'	58 sx Type III Cement
Plug 2	1004'	To	759'	40 sx Type III Cement (30 below CR, 10 above)
Plug 3	155'	To	Surface	71 sx Type III Cement (20 sx for top off)
Plug 4		To		
Plug 5		To		
Plug 6		To		
Plug 7		To		
Plug 8		To		
Plug 9		To		

## BRIDGE PLUG/CEMENT RETAINER SUMMARY

<u>Depth Set</u>
2750'
945'
131'

## WELL PRESSURES

Tubing	0 psi
Casing	0 psi
Bradenhead	0 psi

# MorningStar Operating, LLC

Jicarilla H #3  
Rio Arriba County, NM

All depths include KB  
TD – 2,908'; PBTD – 2,859'

Surface Csg: 3 jts 8-5/8" 32# J-55  
Setting Depth: 105'

Cement  
70sx Cement  
Cmt circulated

Production Csg: 70 jts 5-1/2" 15.5# J-55  
Setting Depth: 2907'

Cement:  
100 sx cement

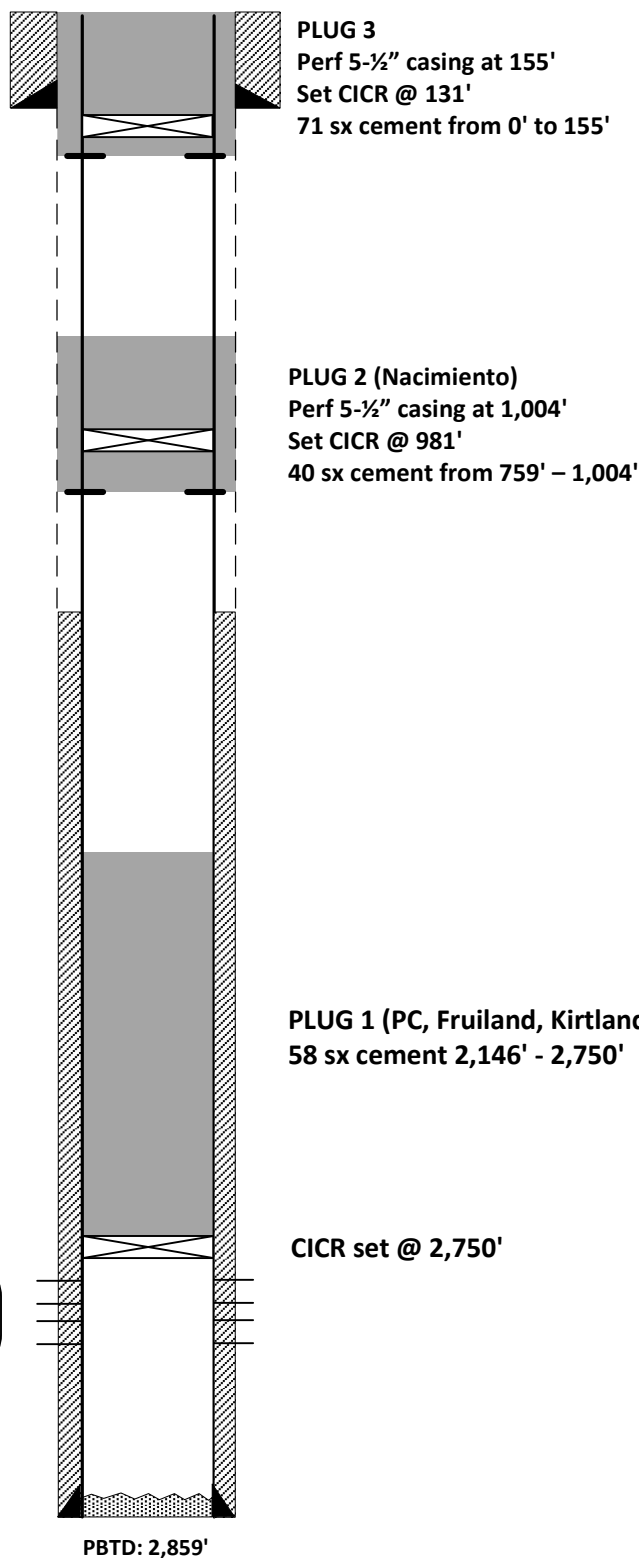
## P&A WBD

Prepared by: J. Marschall  
Updated by: JRyza  
Date: 10/5/2022

KB = 8'  
GL = 6,726'  
API# 30-039-05614

Spud Date: 04/12/1957  
Date Completed: 04/25/1957

Nacimiento – 999'  
Ojo Alamo – 2,271'  
Kirtland – 2,458'  
Fruitland – 2,561'  
Picture Cliffs – 2,776'



Picture Cliffs Perfs:  
Perfs 2,790' - 2830' (4spf)



WVF3FT	8.75		CBTacc-Probe CB275Caac (CB275C_Base) Probe Corrosion CBT with Accelerometers	8.75	2.75	90.00
WVF5FT	7.75					
CBT_ACCZ	4.50					
CBT_ACCY	4.50					
CBT_ACCX	4.50					
CCL	3.75					
			GR275detector-Probe275Gr (110774) Probe 2.75" Dectector on Bottom	4.50	2.75	30.00
GR	0.90					
Dataset: jicarilla h #3.db: field/well/run1/merge1 Total length: 13.25 ft Total weight: 120.00 lb O.D.: 2.75 in						

Database File jicarilla h #3.db

Dataset Pathname merge1

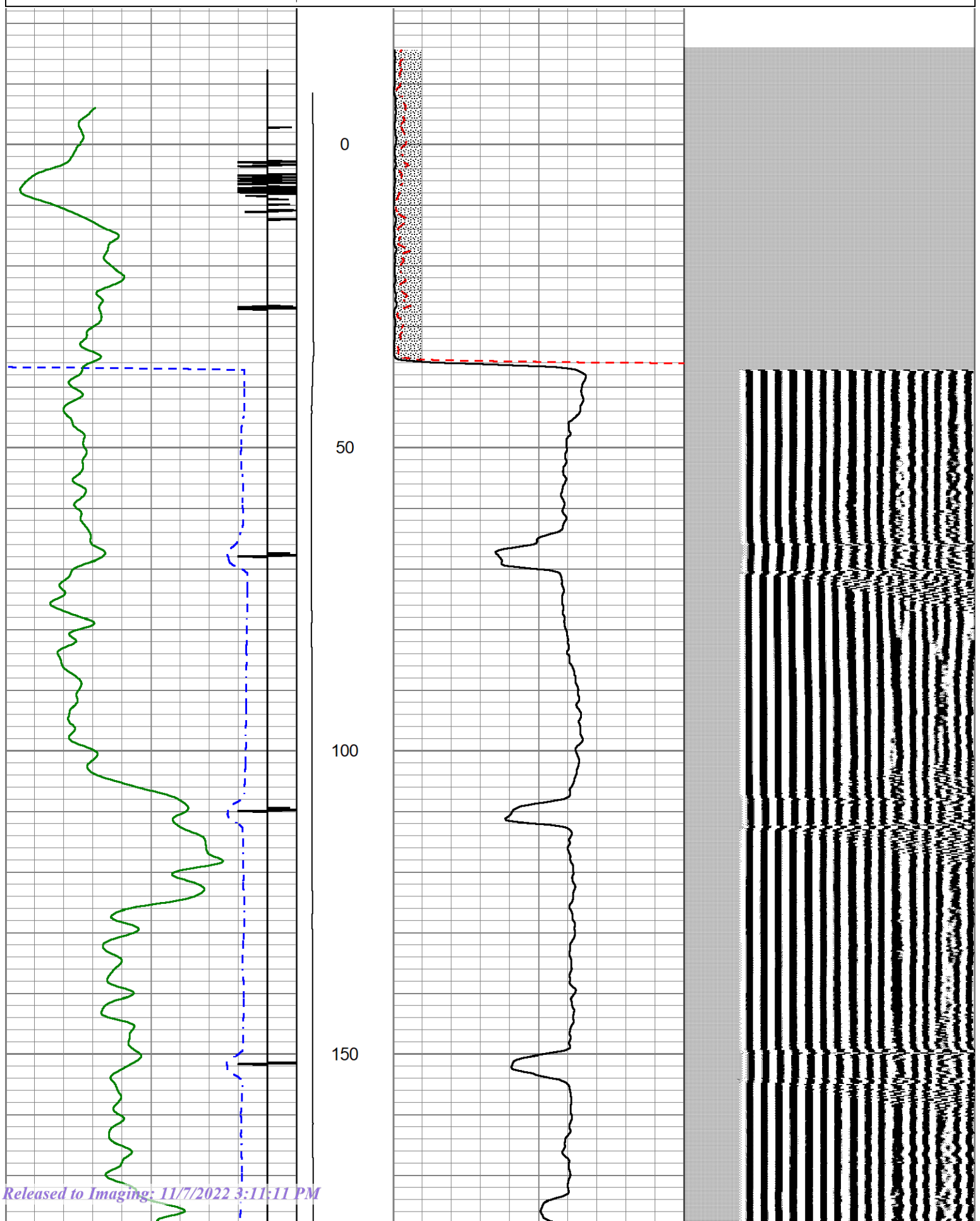
Presentation Format cbl\_drs

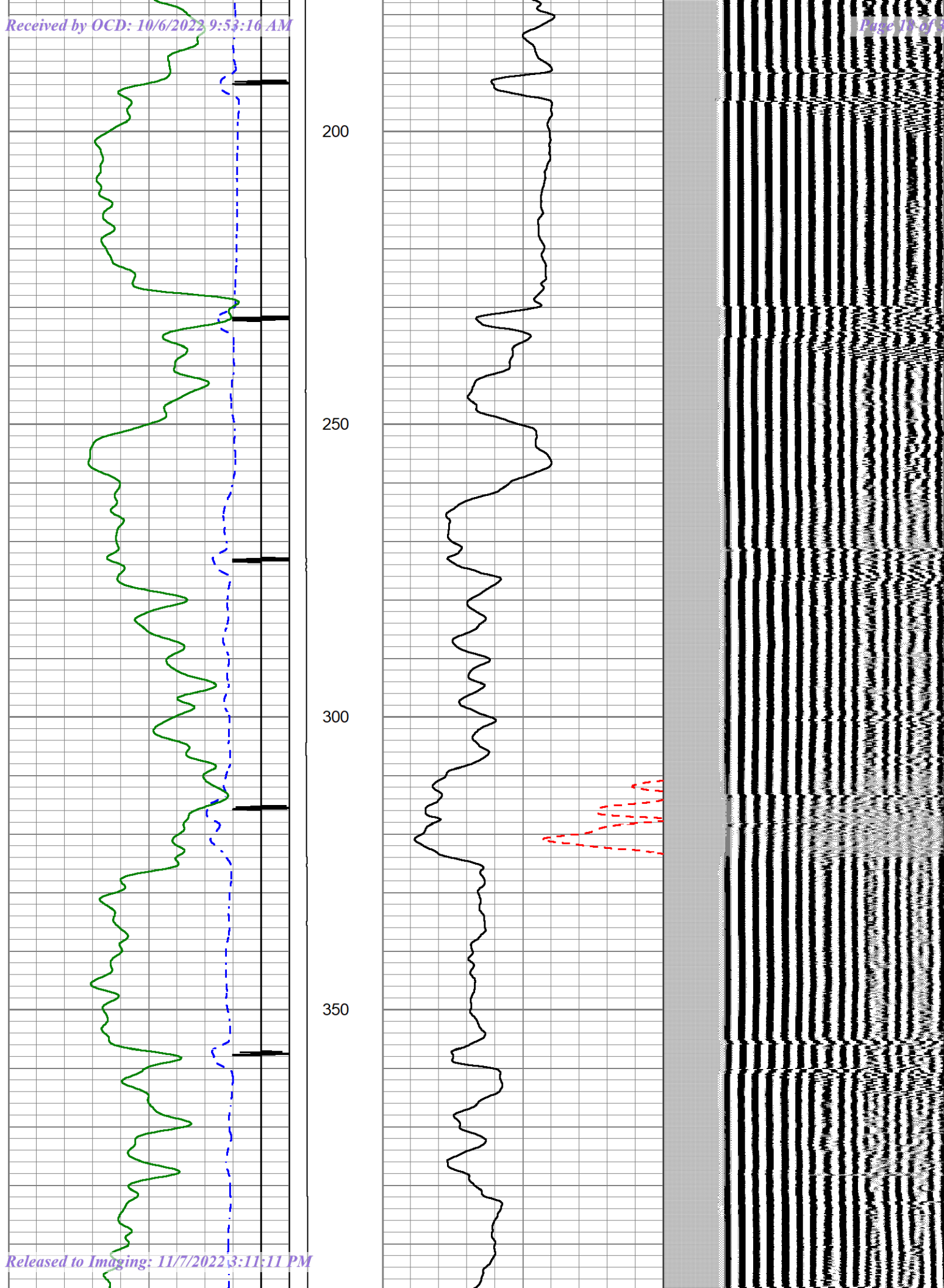
Dataset Creation Thu Sep 29 10:06:50 2022

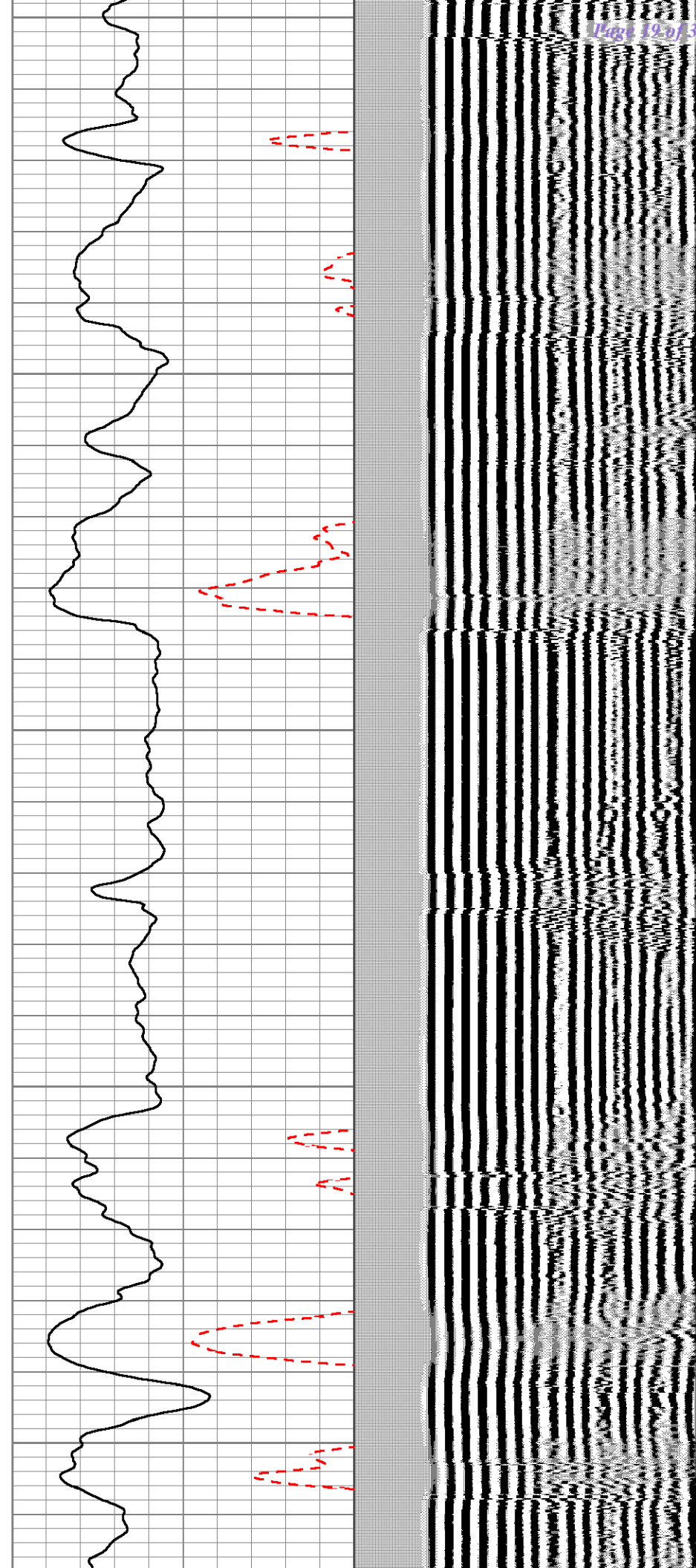
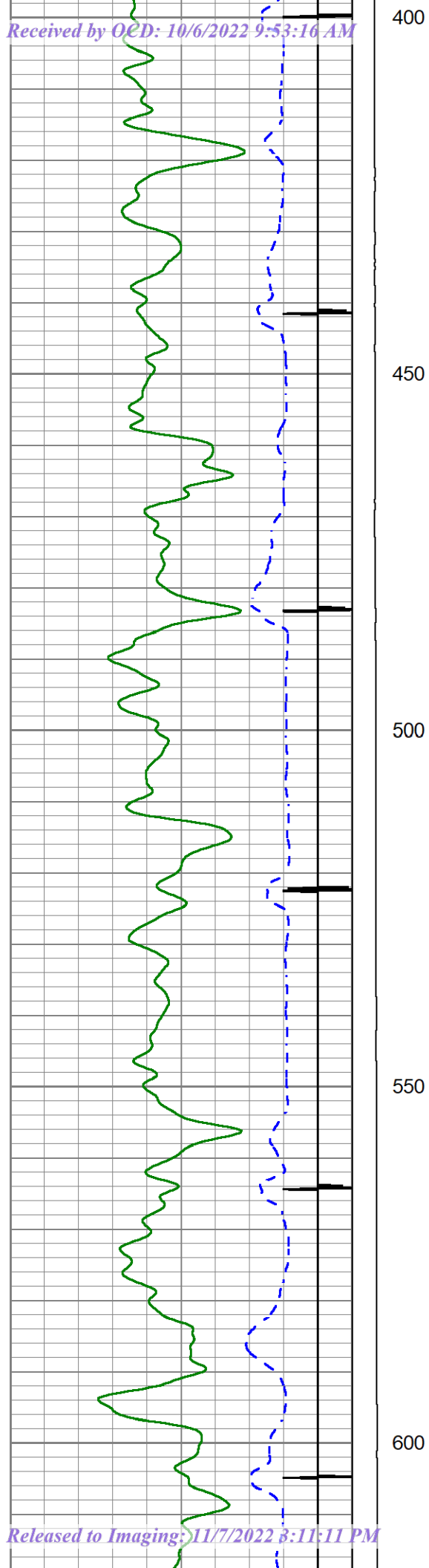
Charted by Depth in Feet scaled 1:240



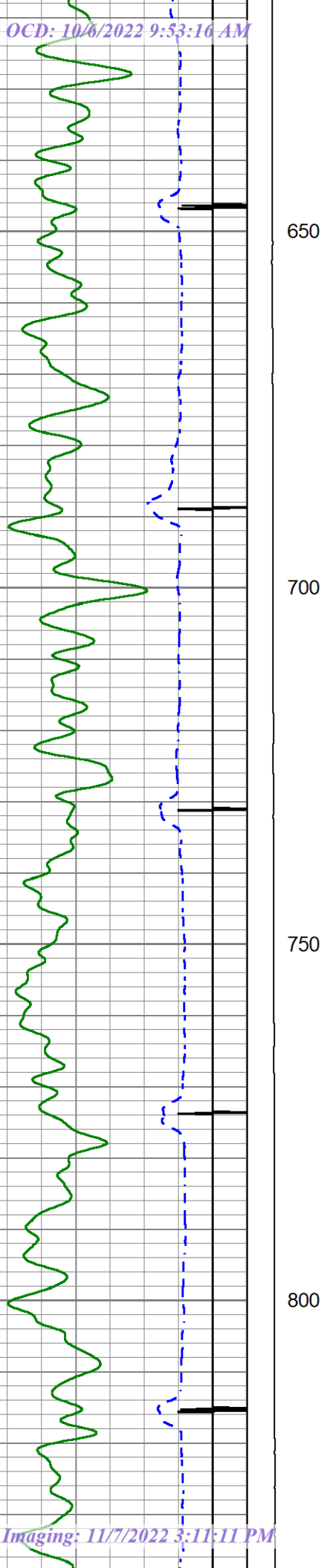
360	TRAVEL TIME (usec)	200	LTEN	0	AMP AMPLITUDE (mV)	20	200	VDL (usec)	1200
9	Collar Locator	-1	0	(lb 2000	0	AMPLITUDE (mV)	100		
0	Gamma Ray (GAPI)	200							









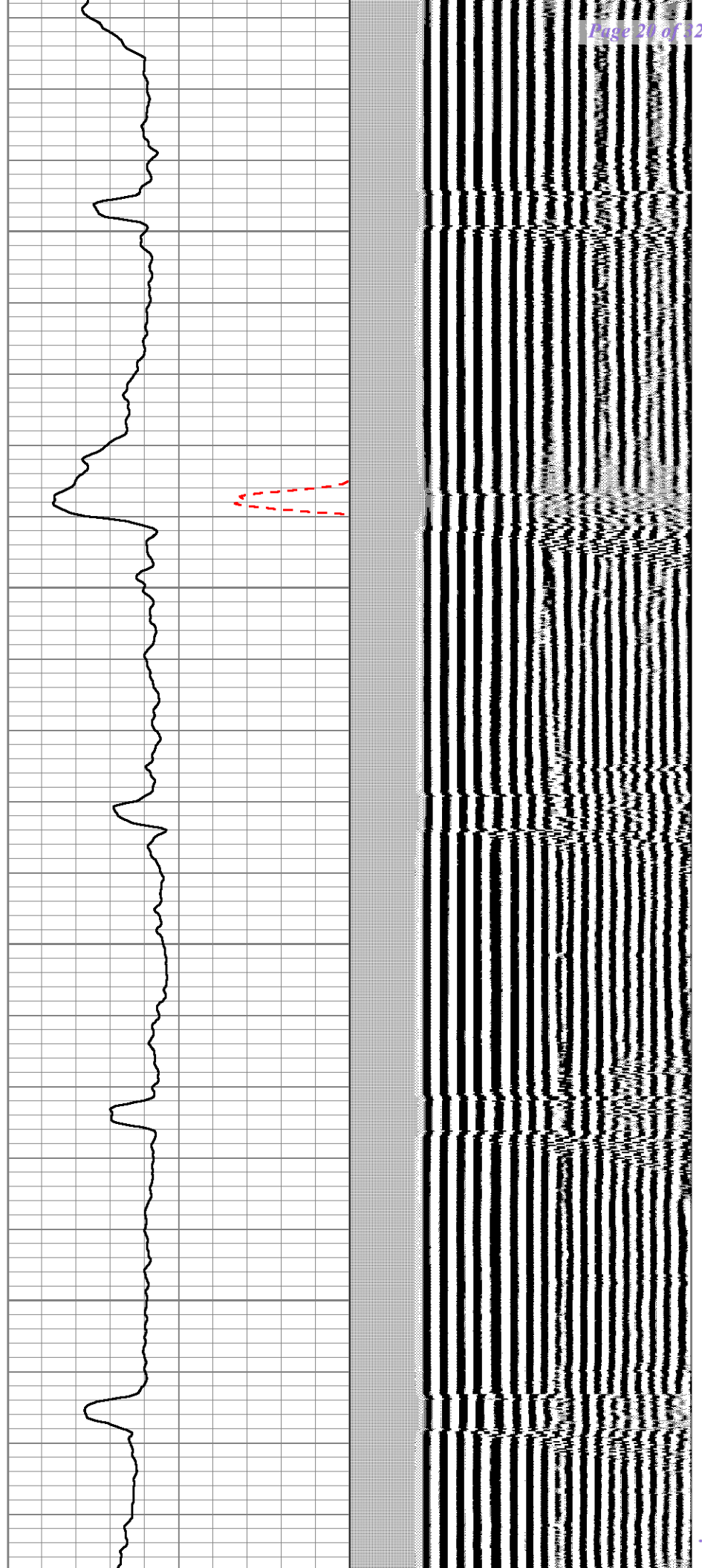


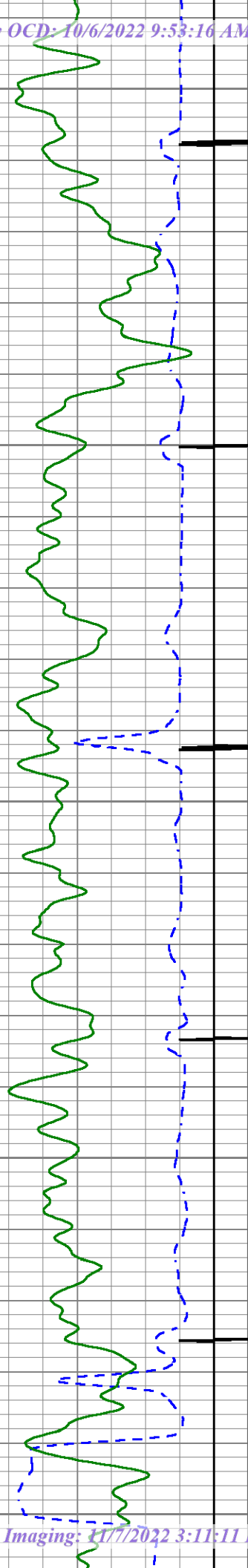
650

700

750

800





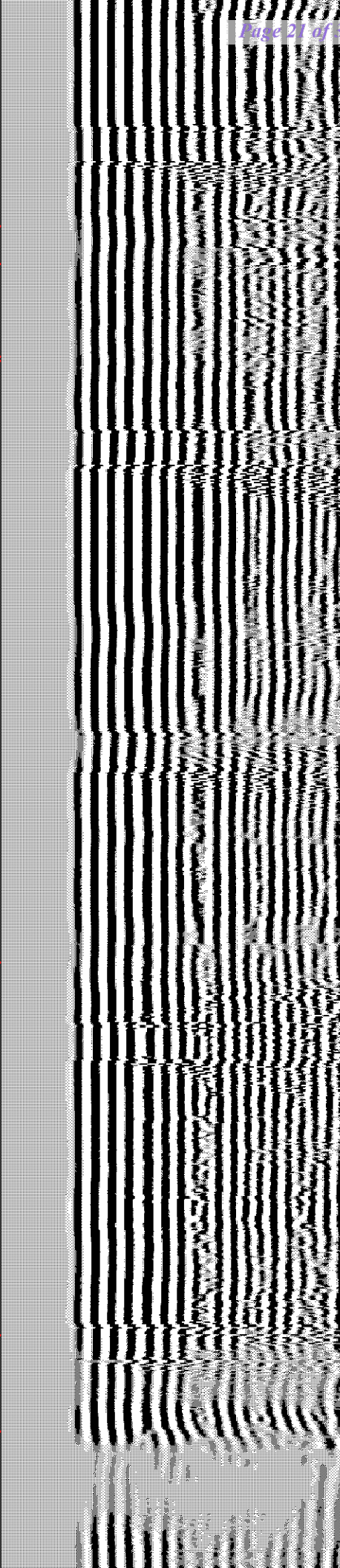
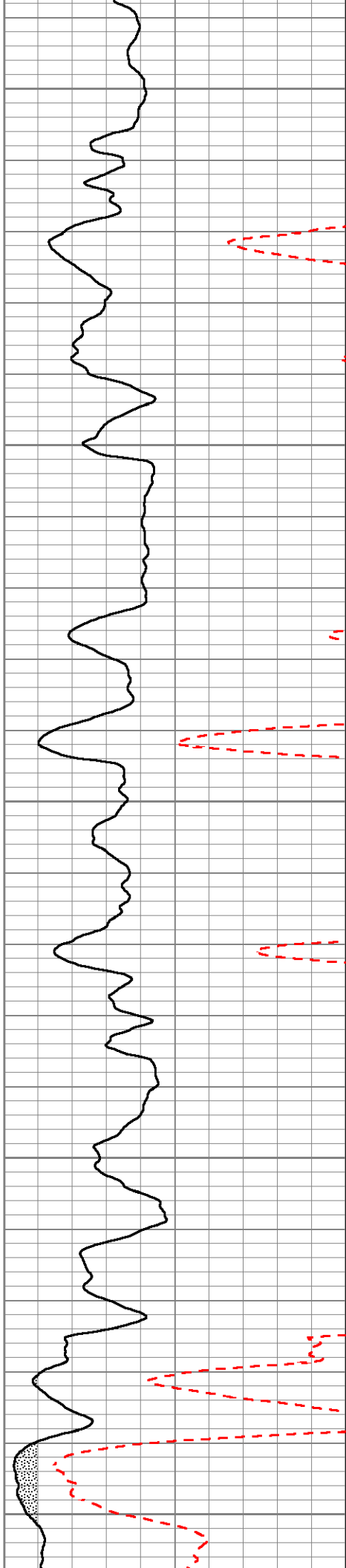
850

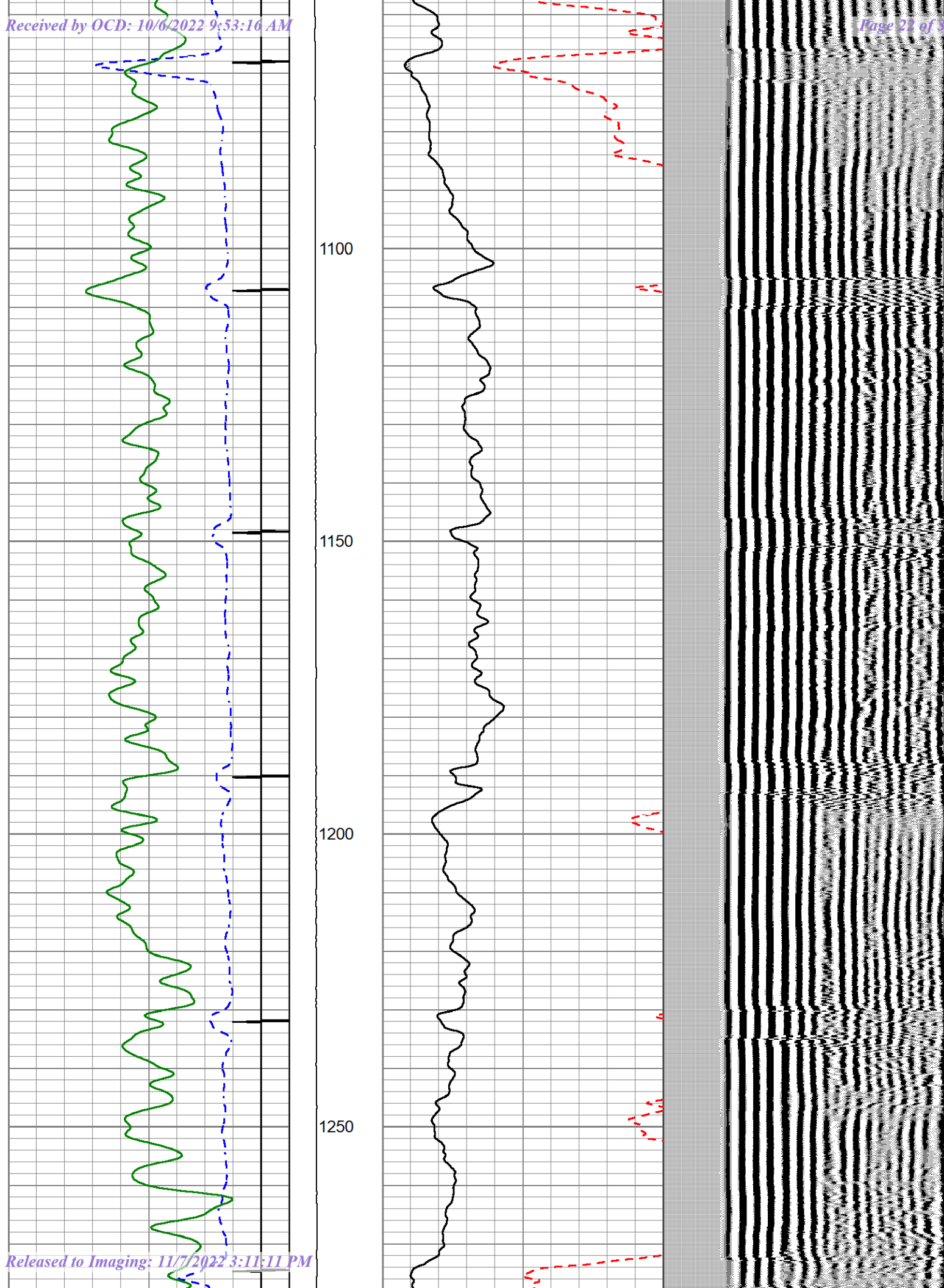
900

950

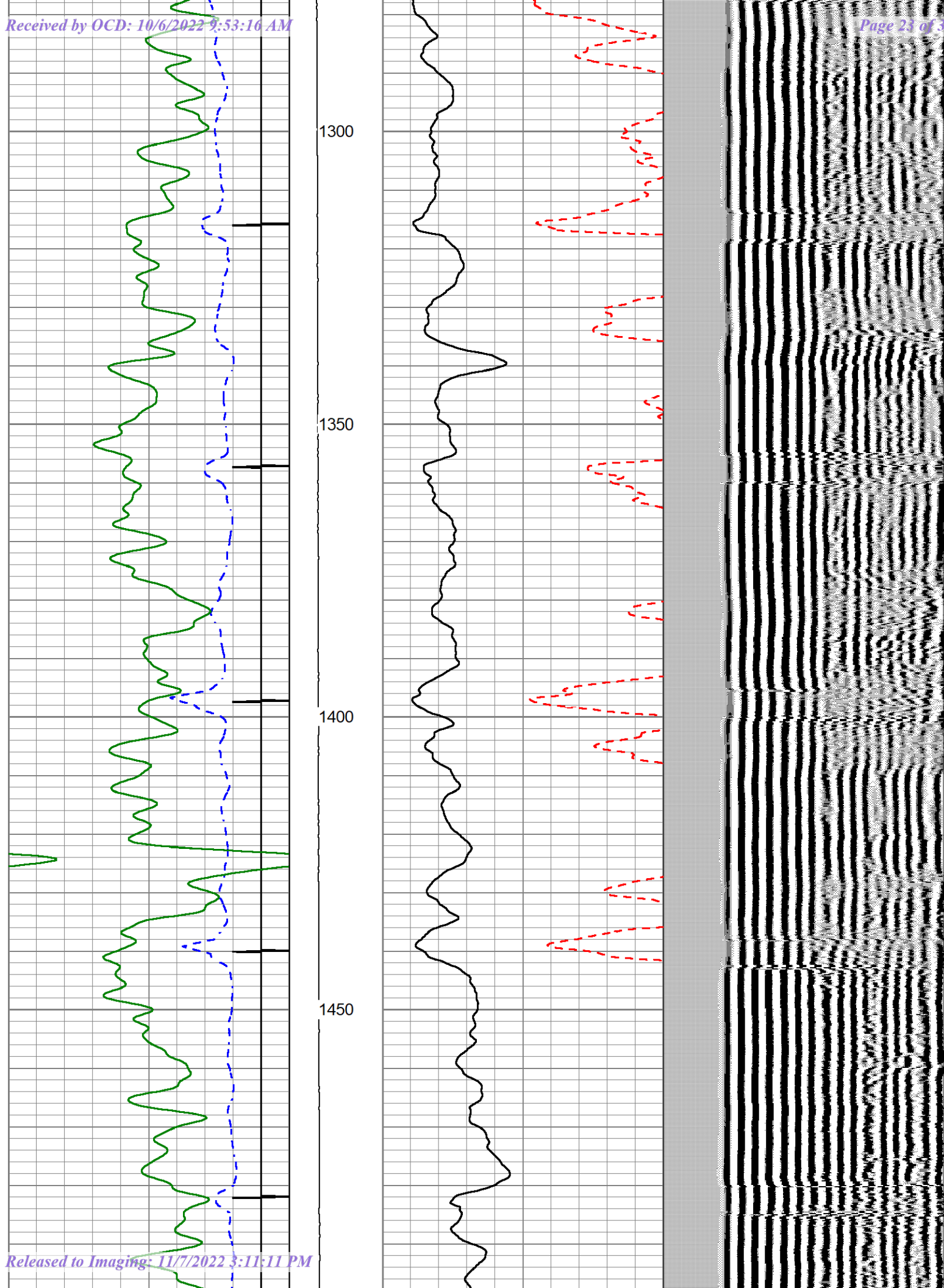
1000

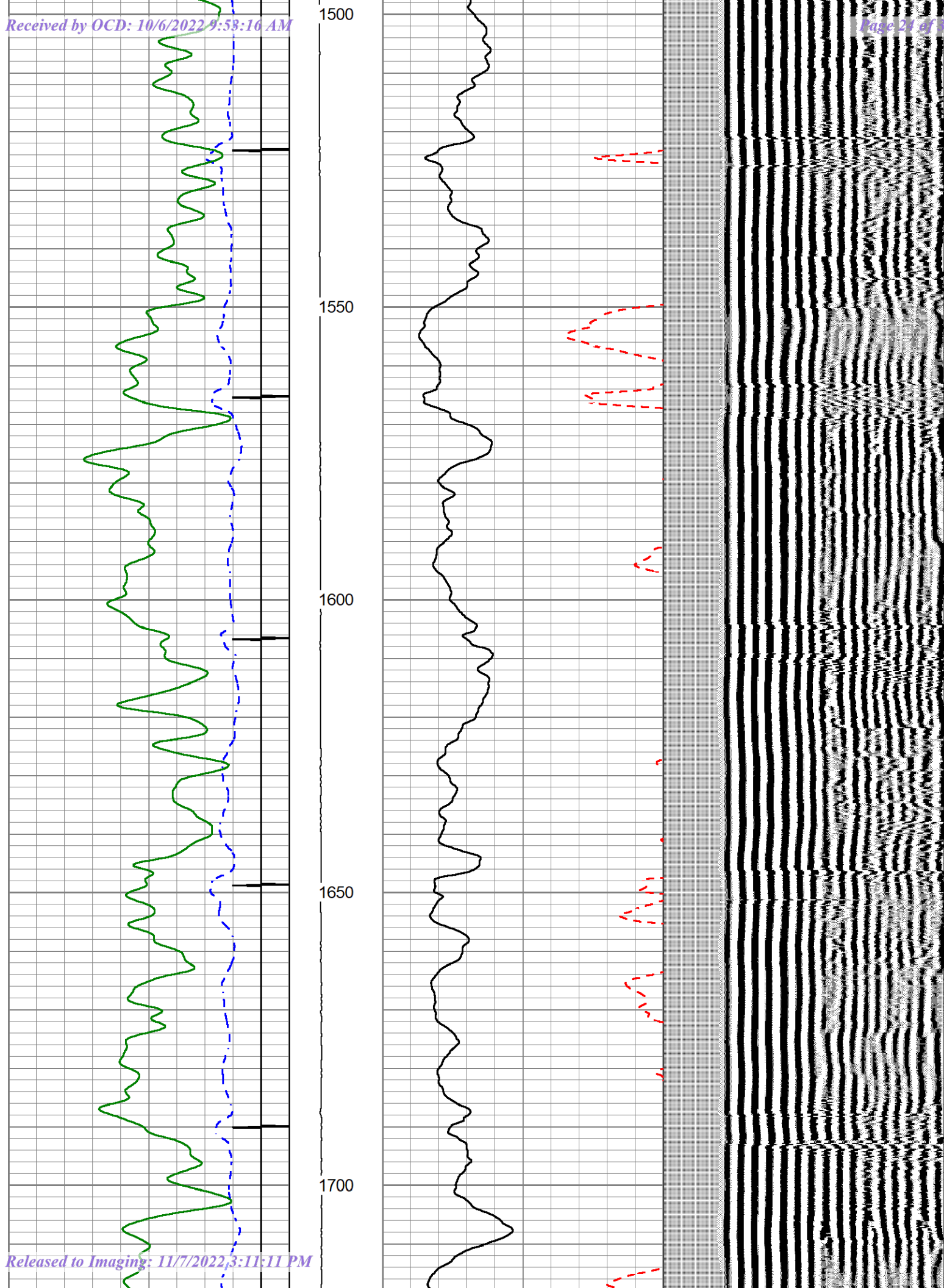
1050



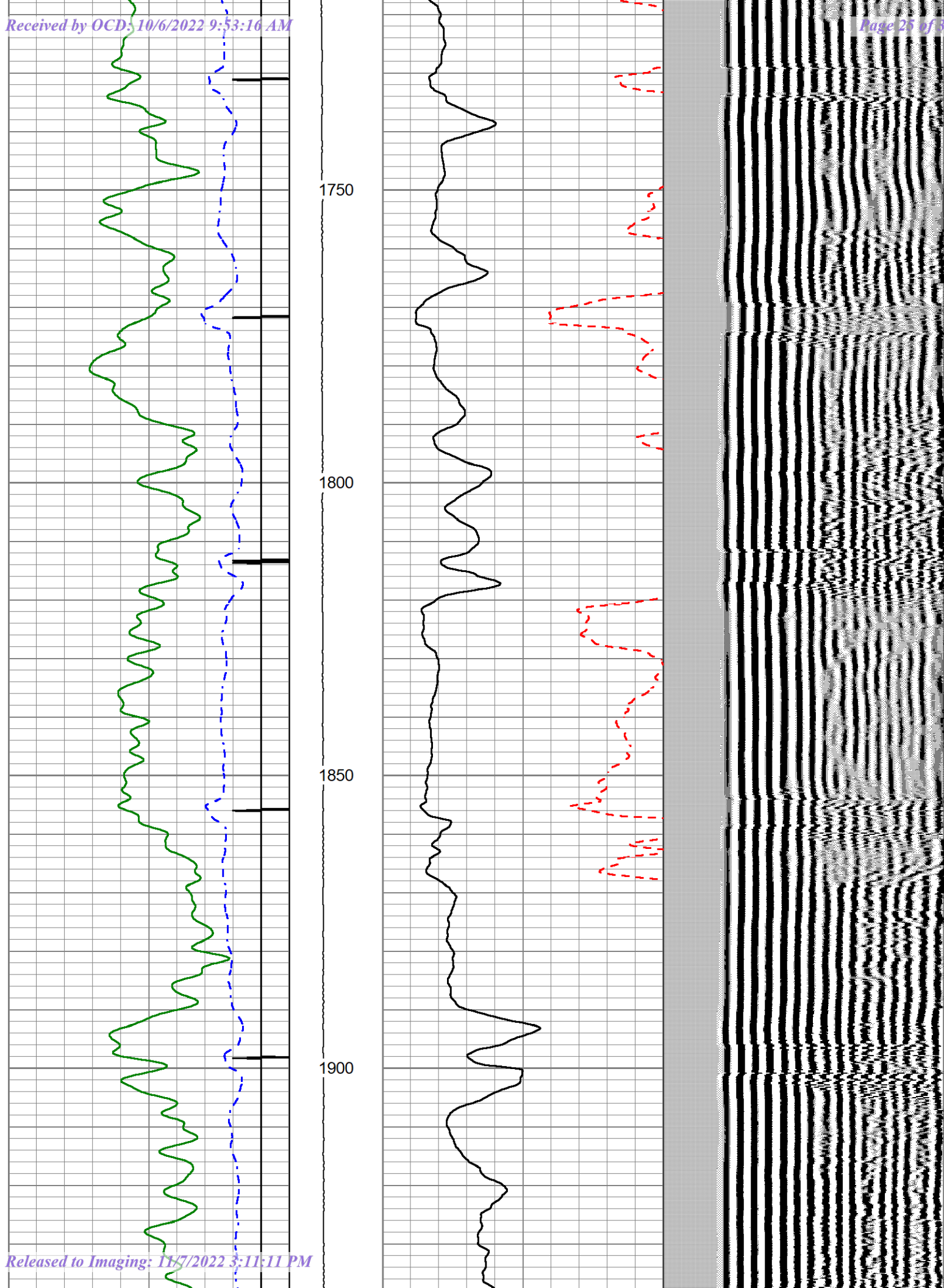


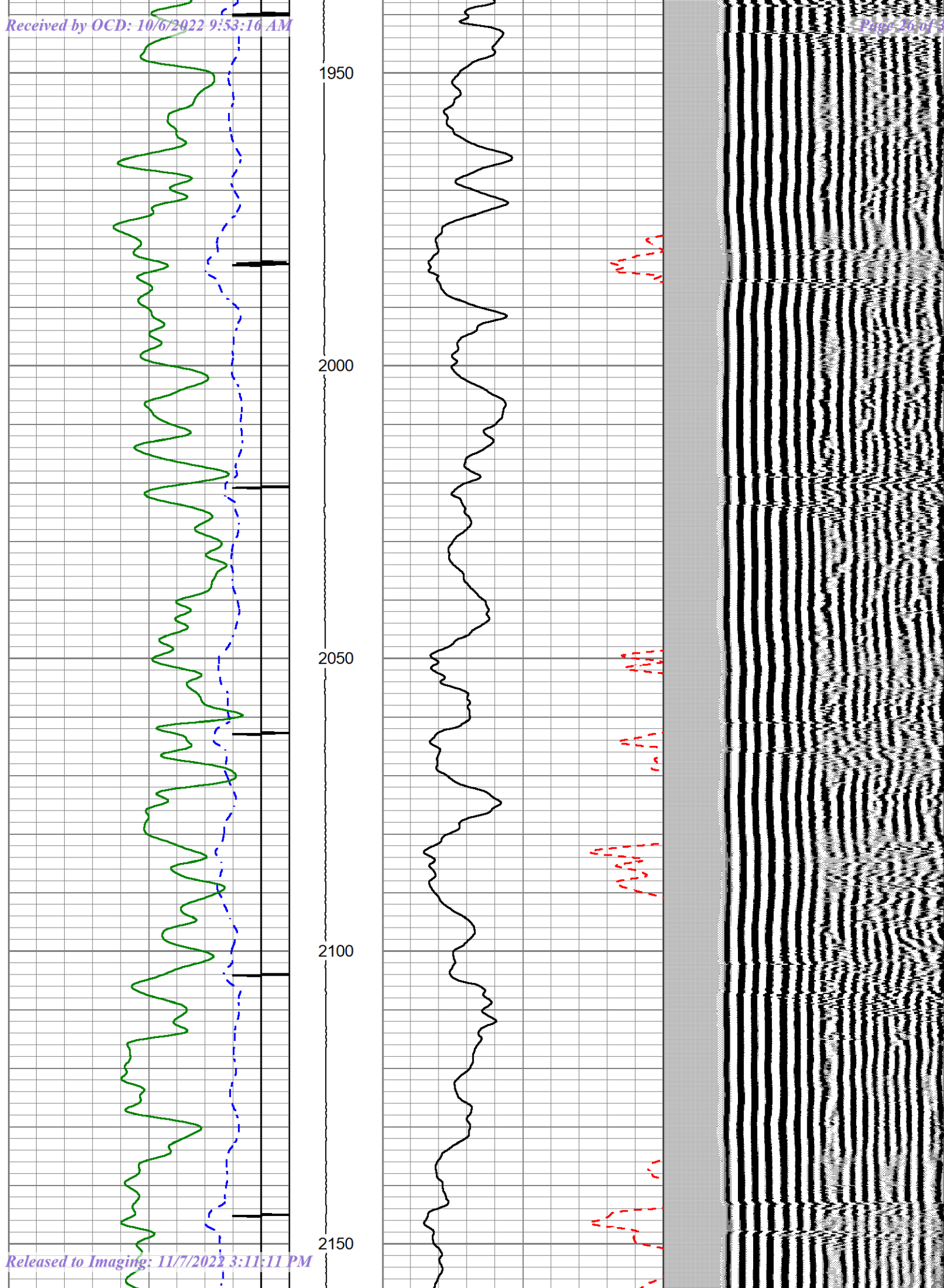




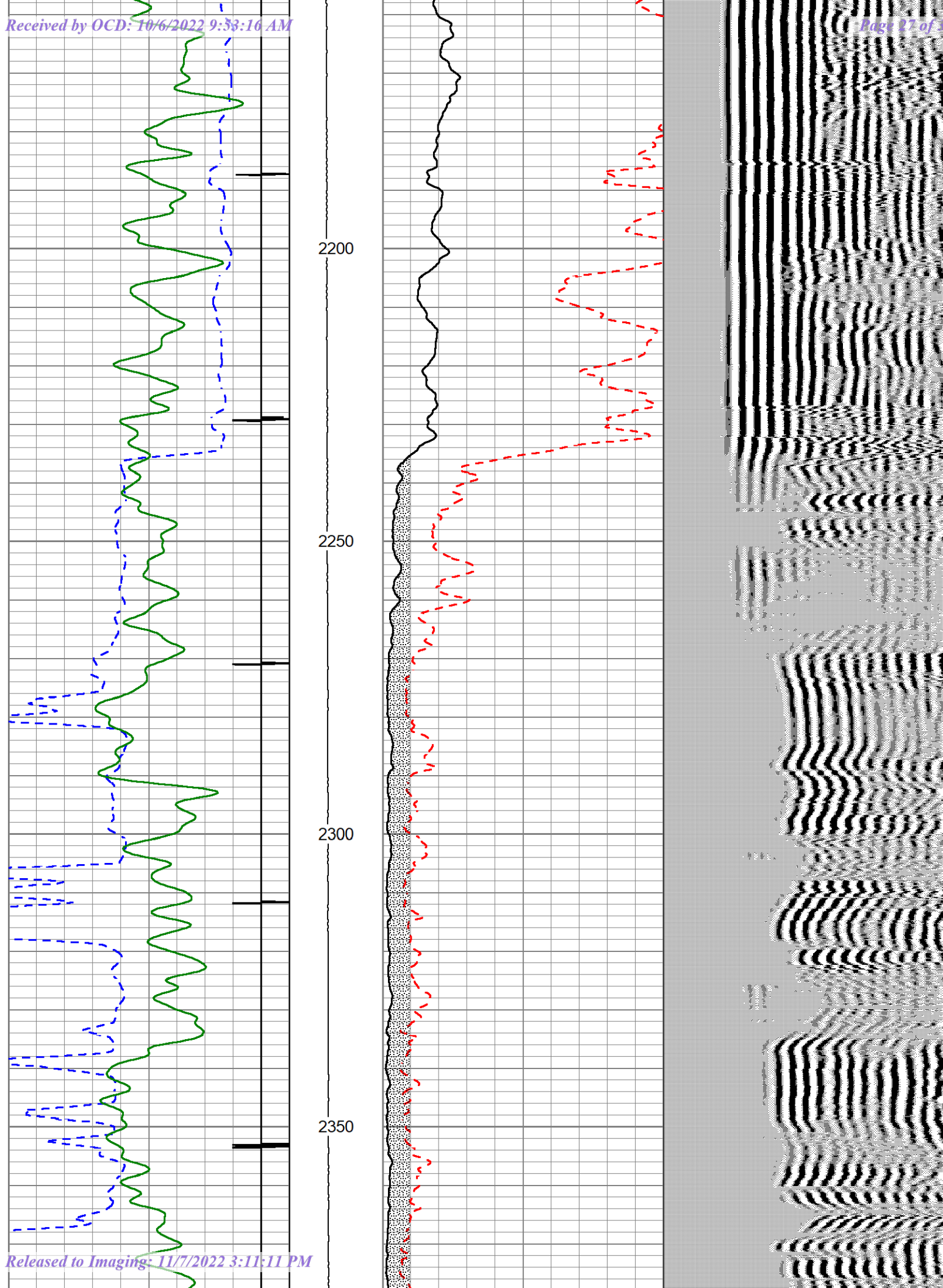


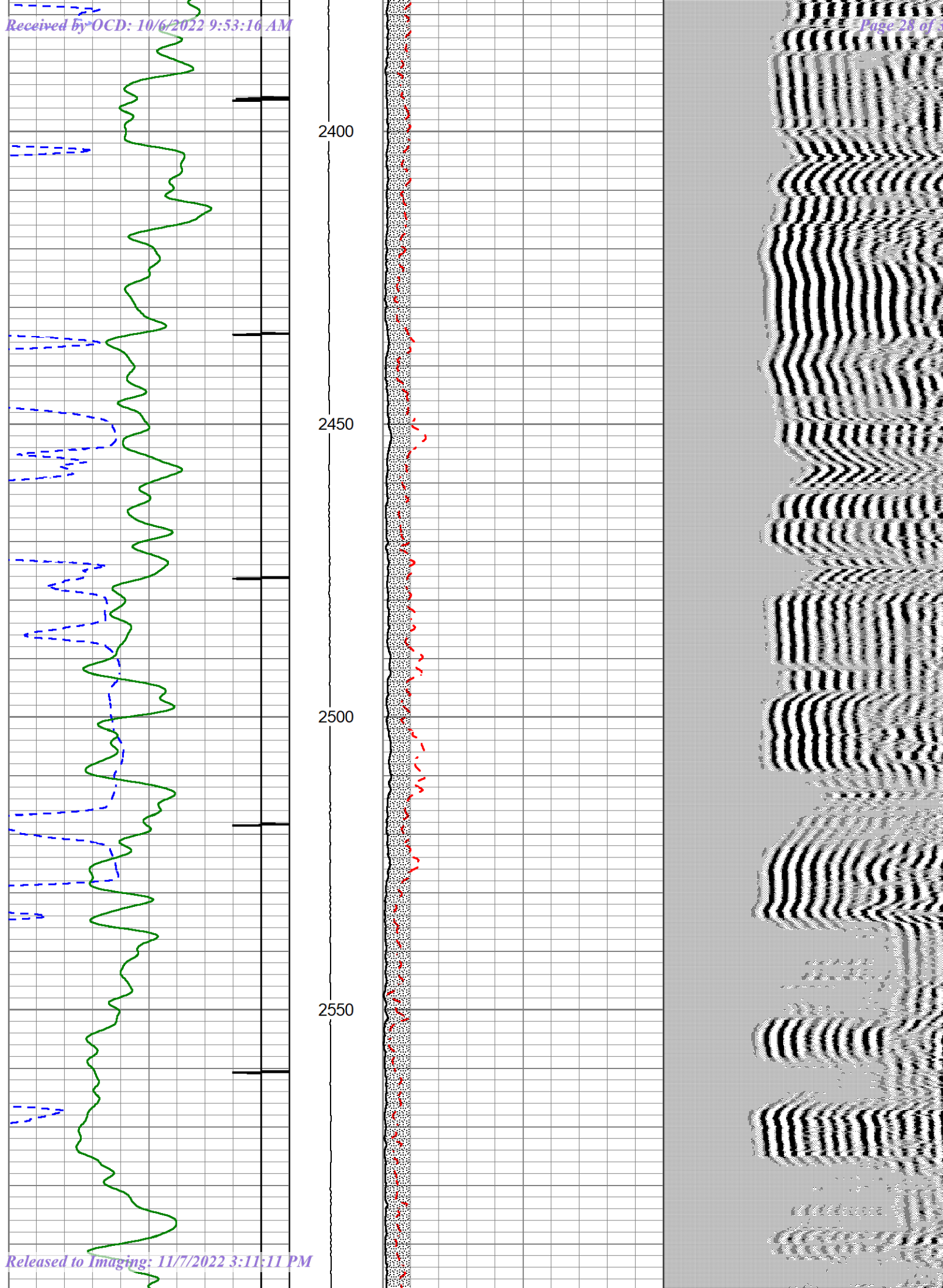


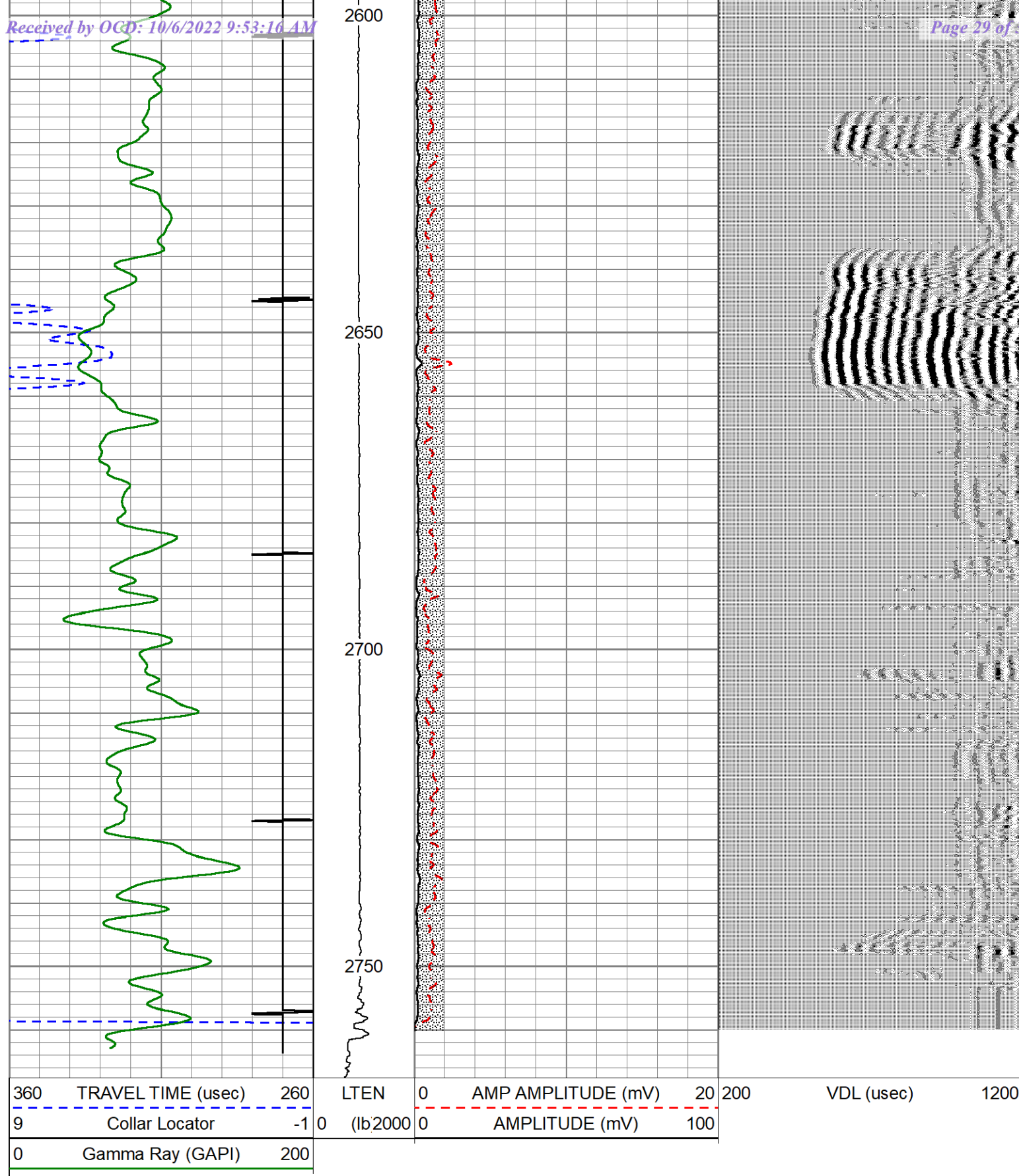












### Calibration Report

Database File jicarilla h #3.db  
Dataset Pathname pass3  
Dataset Creation Thu Sep 29 09:56:34 2022

### Gamma Ray Calibration Report



Calibrator Value:	1.0	GAPI
Background Reading:	0.0	cps
Calibrator Reading:	1.0	cps
Sensitivity:	1.0000	GAPI/cps

### Segmented Cement Bond Log Calibration Report

Serial Number:	CB275C_Base
Tool Model:	Probe CB275Caac
Calibration Casing Diameter:	5.500 in
Calibration Depth:	33.725 ft

Master Calibration, performed Thu Sep 29 09:22:53 2022:

	Raw (v)		Calibrated (mv)		Results	
	Zero	Cal	Zero	Cal	Gain	Offset
3'	0.000	0.782	0.000	71.921	91.948	0.000
CAL						
5'	0.000	0.782	0.000	71.921	91.921	0.000
SUM						
S1						
S2						
S3						
S4						
S5						
S6						
S7						
S8						

Internal Reference Calibration, performed (Not Performed):

	Raw (v)		Calibrated (v)		Results	
	Zero	Cal	Zero	Cal	Gain	Offset
CAL						

Air Zero Calibration, performed (Not Performed):

	Raw (v)		Calibrated (v)		Results	
	Zero		Zero			Offset
3'	0.000		0.000			0.000
5'	0.000		0.000			0.000
SUM						
S1						
S2						
S3						
S4						
S5						
S6						
S7						
S8						

### Inclinometer Calibration Report

X Accelerometer	0.00	1.00	0.00	1.00	gee
Y Accelerometer	0.00	1.00	0.00	1.00	gee
Z Accelerometer	0.00	1.00	0.00	1.00	gee

**District I**  
1625 N. French Dr., Hobbs, NM 88240  
Phone:(575) 393-6161 Fax:(575) 393-0720  
**District II**  
811 S. First St., Artesia, NM 88210  
Phone:(575) 748-1283 Fax:(575) 748-9720  
**District III**  
1000 Rio Brazos Rd., Aztec, NM 87410  
Phone:(505) 334-6178 Fax:(505) 334-6170  
**District IV**  
1220 S. St Francis Dr., Santa Fe, NM 87505  
Phone:(505) 476-3470 Fax:(505) 476-3462

**State of New Mexico**  
**Energy, Minerals and Natural Resources**  
**Oil Conservation Division**  
**1220 S. St Francis Dr.**  
**Santa Fe, NM 87505**

CONDITIONS  
  
Action 149290

CONDITIONS

Operator: MorningStar Operating LLC 400 W 7th St Fort Worth, TX 76102	OGRID: 330132
	Action Number: 149290
	Action Type: [C-103] Sub. Plugging (C-103P)

CONDITIONS

Created By	Condition	Condition Date
mkuehling	well plugged 10/3/22	11/4/2022