

District I  
1625 N. French Dr., Hobbs, NM 88240  
District II  
811 S. First St., Artesia, NM 88210  
District III  
1000 Rio Brazos Rd., Aztec, NM 87410  
District IV  
1220 S. St. Francis Dr., Santa Fe, NM 87505

State of New Mexico  
Energy, Minerals & Natural  
Resources

Form C-104  
Revised August 1, 2011

Submit one copy to appropriate District Office

Oil Conservation Division  
1220 South St. Francis Dr.

AMENDED REPORT

**I. REQUEST FOR ALLOWABLE MINDS AUTHORIZATION TO TRANSPORT**

<sup>1</sup> Operator name and Address EOG RESOURCES INC PO BOX 2267 MIDLAND, TEXAS 79702		<sup>2</sup> OGRID Number 7377
		<sup>3</sup> Reason for Filing Code/ Effective Date NW 12/12/2021
<sup>4</sup> API Number 30 - 025-48841	<sup>5</sup> Pool Name WC025 G08 S253235G; LOWER BONE SPRING	<sup>6</sup> Pool Code 97903
<sup>7</sup> Property Code 330803	<sup>8</sup> Property Name JEFE 29 FEDERAL COM	<sup>9</sup> Well Number 506H

**II. <sup>10</sup> Surface Location**

Ul or lot no.	Section	Township	Range	Lot Idn	Feet from the	North/South Line	Feet from the	East/West line	County
I	29	25S	32E		1554'	SOUTH	695'	EAST	LEA

**<sup>11</sup> Bottom Hole Location**

UL or lot no.	Section	Township	Range	Lot Idn	Feet from the	North/South line	Feet from the	East/West line	County
O	32	25S	32E		112'	SOUTH	1335'	EAST	LEA
<sup>12</sup> Lse Code	<sup>13</sup> Producing Method Code FLOWING	<sup>14</sup> Gas Connection Date	<sup>15</sup> C-129 Permit Number	<sup>16</sup> C-129 Effective Date	<sup>17</sup> C-129 Expiration Date				

**III. Oil and Gas Transporters**

<sup>18</sup> Transporter OGRID	<sup>19</sup> Transporter Name and Address	<sup>20</sup> O/G/W
372812	EOGRM	OIL
151618	ENTERPRISE FIELD SERVICES	GAS
298751	REGENCY FIELD SERVICES	GAS
36785	DCP MIDSTREAM	GAS

**IV. Well Completion Data**

<sup>21</sup> Spud Date	<sup>22</sup> Ready Date	<sup>23</sup> TD	<sup>24</sup> PBDT	<sup>25</sup> Perforations	<sup>26</sup> DHC, MC
07/06/2021	12/12/2021	17,920'	17,888'	10,745 - 17,888'	
<sup>27</sup> Hole Size	<sup>28</sup> Casing & Tubing Size	<sup>29</sup> Depth Set	<sup>30</sup> Sacks Cement		
12 1/4"	9 5/8"	1183'	510 SXS CL C/CIRC		
8 3/4"	7 5/8"	9692'	1340 SXS CL C&H/CIRC		
6 3/4"	5 1/2"	17,898'	750 SXS CL H TOC 1502' CBL		

**V. Well Test Data**

<sup>31</sup> Date New Oil	<sup>32</sup> Gas Delivery Date	<sup>33</sup> Test Date	<sup>34</sup> Test Length	<sup>35</sup> Tbg. Pressure	<sup>36</sup> Csg. Pressure
12/12/2021	12/12/2021	12/22/2021	24 HRS		572
<sup>37</sup> Choke Size	<sup>38</sup> Oil	<sup>39</sup> Water	<sup>40</sup> Gas	<sup>41</sup> Test Method	
128	1543	6048	3499		

<sup>42</sup> I hereby certify that the rules of the Oil Conservation Division have been complied with and that the information given above is true and complete to the best of my knowledge and belief.

Signature: Kay Maddox  
Printed name: Kay Maddox  
Title: SENIOR REGULATORY SPECIALIST  
E-mail Address: kay\_maddox@eogresources.com  
Date: 01/06/2022 Phone: 432-638-8475

OIL CONSERVATION DIVISION  
Approved by: PATRICIA MARTINEZ  
Title: PETROLEUM SPECIALIST  
Approval Date: 12/2/2022

District I  
1625 N. French Dr., Hobbs, NM 88240  
Phone: (575) 393-6161 Fax: (575) 393-0720  
District II  
811 S. First St., Artesia, NM 88210  
Phone: (575) 748-1283 Fax: (575) 748-9720  
District III  
1000 Rio Brazos Road, Aztec, NM 87410  
Phone: (505) 334-6178 Fax: (505) 334-6170  
District IV  
1220 S. St. Francis Dr., Santa Fe, NM 87505  
Phone: (505) 476-3460 Fax: (505) 476-3462

State of New Mexico  
Energy, Minerals & Natural Resources  
Department  
OIL CONSERVATION DIVISION  
1220 South St. Francis Dr.  
Santa Fe, NM 87505

FORM C-102  
Revised August 1, 2011  
Submit one copy to appropriate  
District Office

AMENDED REPORT

WELL LOCATION AND ACREAGE DEDICATION PLAT

<sup>1</sup> API Number <b>30-025- 48841</b>		<sup>2</sup> Pool Code <b>97903</b>	<sup>3</sup> Pool Name <b>WC025 G08 S253235G; LOWER BONE SPRING</b>
<sup>4</sup> Property Code <b>330803</b>	<sup>5</sup> Property Name <b>JEFE 29 FED COM</b>		<sup>6</sup> Well Number <b>506H</b>
<sup>7</sup> OGRID No. <b>7377</b>	<sup>8</sup> Operator Name <b>EOG RESOURCES, INC.</b>		<sup>9</sup> Elevation <b>3347'</b>

<sup>10</sup>Surface Location

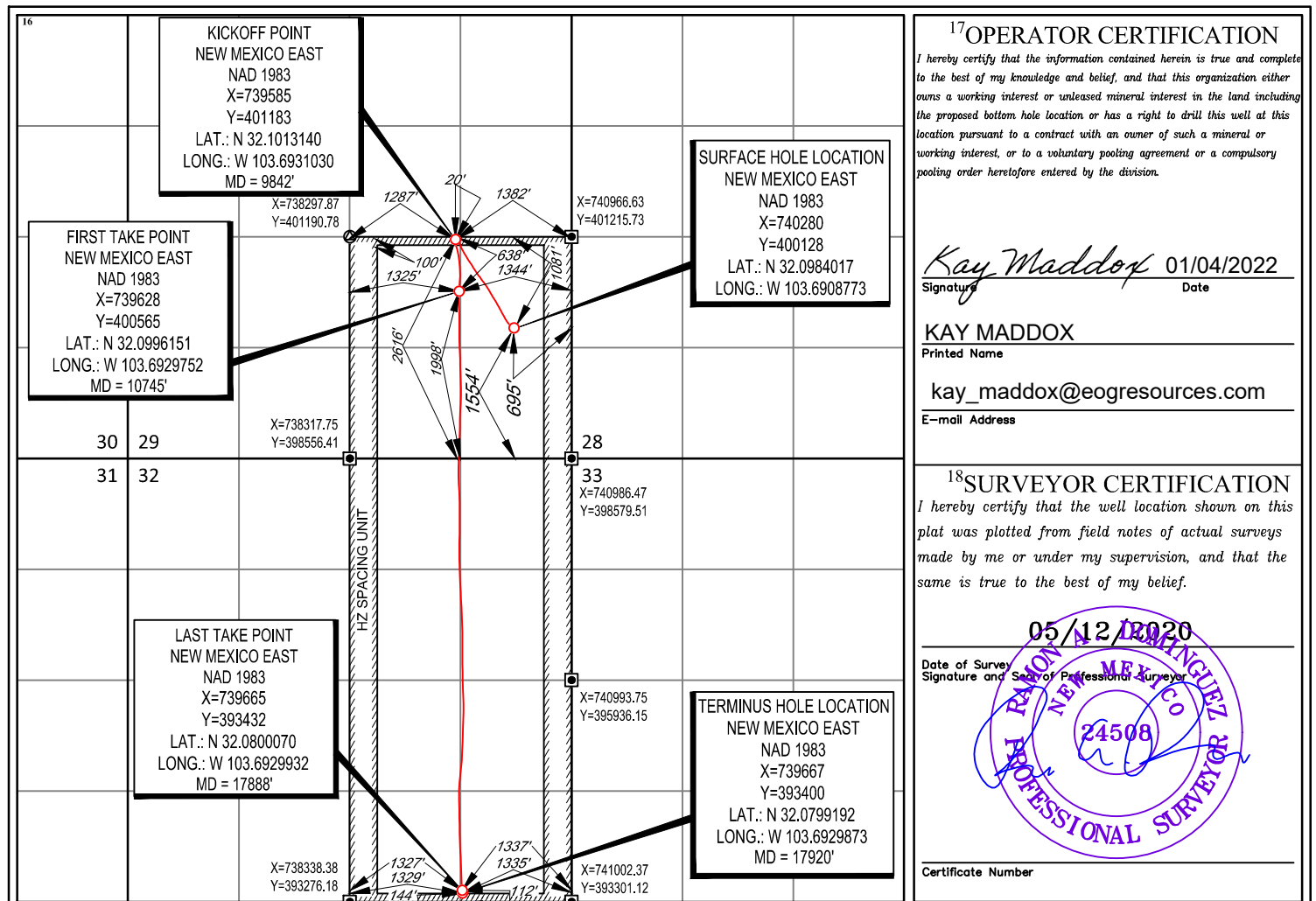
UL or lot no.	Section	Township	Range	Lot Idn	Feet from the	North/South line	Feet from the	East/West line	County
<b>I</b>	<b>29</b>	<b>25-S</b>	<b>32-E</b>	<b>-</b>	<b>1554'</b>	<b>SOUTH</b>	<b>695'</b>	<b>EAST</b>	<b>LEA</b>

<sup>11</sup>Bottom Hole Location If Different From Surface

UL or lot no.	Section	Township	Range	Lot Idn	Feet from the	North/South line	Feet from the	East/West line	County
<b>O</b>	<b>32</b>	<b>25-S</b>	<b>32-E</b>	<b>-</b>	<b>112'</b>	<b>SOUTH</b>	<b>1335'</b>	<b>EAST</b>	<b>LEA</b>

<sup>12</sup> Dedicated Acres <b>480</b>	<sup>13</sup> Joint or Infill	<sup>14</sup> Consolidation Code	<sup>15</sup> Order No.
---	-------------------------------	----------------------------------	-------------------------

No allowable will be assigned to this completion until all interests have been consolidated or a non-standard unit has been approved by the division.





## Midland

Lea County, NM (NAD 83 NME)

Jefe 29 Fed Com

#506H

OH

Design: OH

## Final PVA

16 August, 2021

<b>Company:</b>	Midland	<b>Local Co-ordinate Reference:</b>	Well #506H
<b>Project:</b>	Lea County, NM (NAD 83 NME)	<b>TVD Reference:</b>	KB = 26' @ 3373.0usft
<b>Site:</b>	Jefe 29 Fed Com	<b>MD Reference:</b>	KB = 26' @ 3373.0usft
<b>Well:</b>	#506H	<b>North Reference:</b>	Grid
<b>Wellbore:</b>	OH	<b>Survey Calculation Method:</b>	Minimum Curvature
<b>Design:</b>	OH	<b>Database:</b>	PEDM

<b>Project</b>	Lea County, NM (NAD 83 NME)		
<b>Map System:</b>	US State Plane 1983	<b>System Datum:</b>	Mean Sea Level
<b>Geo Datum:</b>	North American Datum 1983		
<b>Map Zone:</b>	New Mexico Eastern Zone		

<b>Site</b>	Jefe 29 Fed Com		
<b>Site Position:</b>		<b>Northing:</b>	400,660.00 usft
<b>From:</b>	Map	<b>Easting:</b>	736,197.00 usft
<b>Position Uncertainty:</b>	0.0 usft	<b>Slot Radius:</b>	13-3/16 "
		<b>Latitude:</b>	32° 5' 59.750 N
		<b>Longitude:</b>	103° 42' 14.588 W
		<b>Grid Convergence:</b>	0.33 °

<b>Well</b>	#506H					
<b>Well Position</b>	<b>+N/-S</b>	0.0 usft	<b>Northing:</b>	400,128.00 usft	<b>Latitude:</b>	32° 5' 54.247 N
	<b>+E/-W</b>	0.0 usft	<b>Easting:</b>	740,280.00 usft	<b>Longitude:</b>	103° 41' 27.159 W
<b>Position Uncertainty</b>		0.0 usft	<b>Wellhead Elevation:</b>	usft	<b>Ground Level:</b>	3,347.0 usft

<b>Wellbore</b>	OH				
<b>Magnetics</b>	<b>Model Name</b>	<b>Sample Date</b>	<b>Declination (°)</b>	<b>Dip Angle (°)</b>	<b>Field Strength (nT)</b>
	IGRF2020	7/26/2021	6.58	59.76	47,396.43145346

<b>Design</b>	OH				
<b>Audit Notes:</b>					
<b>Version:</b>	1.0	<b>Phase:</b>	ACTUAL	<b>Tie On Depth:</b>	0.0
<b>Vertical Section:</b>		<b>Depth From (TVD) (usft)</b>	<b>+N/-S (usft)</b>	<b>+E/-W (usft)</b>	<b>Direction (°)</b>
		0.0	0.0	0.0	185.25

<b>Survey Program</b>	<b>Date</b>	8/4/2021			
<b>From (usft)</b>	<b>To (usft)</b>	<b>Survey (Wellbore)</b>	<b>Tool Name</b>	<b>Description</b>	
199.0	17,920.0	Gordon MWD (OH)	EOG MWD+IFR1	MWD + IFR1	

<b>Company:</b>	Midland	<b>Local Co-ordinate Reference:</b>	Well #506H
<b>Project:</b>	Lea County, NM (NAD 83 NME)	<b>TVD Reference:</b>	KB = 26' @ 3373.0usft
<b>Site:</b>	Jefe 29 Fed Com	<b>MD Reference:</b>	KB = 26' @ 3373.0usft
<b>Well:</b>	#506H	<b>North Reference:</b>	Grid
<b>Wellbore:</b>	OH	<b>Survey Calculation Method:</b>	Minimum Curvature
<b>Design:</b>	OH	<b>Database:</b>	PEDM

Survey											
MD (usft)	Inc (°)	Azi (azimuth) (°)	TVD (usft)	N/S (usft)	E/W (usft)	DLeg (°/100usft)	Build (°/100usft)	Turn (°/100usft)	High to Plan (usft)	Right to Plan (usft)	
0.0	0.00	0.00	0.0	0.0	0.0	0.00	0.00	0.00	0.0	0.0	0.0
199.0	0.26	333.66	199.0	0.4	-0.2	0.13	0.13	0.00	-0.5	0.0	
296.0	0.36	292.77	296.0	0.7	-0.6	0.24	0.10	-42.15	-0.8	-0.4	
383.0	0.36	291.10	383.0	0.9	-1.1	0.01	0.00	-1.92	-1.3	-0.5	
471.0	0.58	310.88	471.0	1.3	-1.7	0.31	0.25	22.48	-2.1	0.1	
558.0	1.30	305.93	558.0	2.2	-2.8	0.83	0.83	-5.69	-3.6	-0.1	
656.0	2.00	308.44	655.9	3.9	-5.1	0.72	0.71	2.56	-6.4	0.1	
751.0	2.64	309.05	750.9	6.3	-8.0	0.67	0.67	0.64	-10.2	0.2	
846.0	3.17	310.82	845.7	9.4	-11.7	0.57	0.56	1.86	-15.0	0.6	
941.0	3.32	307.60	940.6	12.8	-15.9	0.25	0.16	-3.39	-20.4	-0.4	
1,037.0	3.61	307.35	1,036.4	16.3	-20.5	0.30	0.30	-0.26	-26.2	-0.5	
1,124.0	3.74	309.86	1,123.2	19.8	-24.9	0.24	0.15	2.89	-31.8	0.7	
1,236.0	4.11	310.30	1,235.0	24.7	-30.7	0.33	0.33	0.39	-39.2	1.1	
1,331.0	5.00	319.50	1,329.7	30.1	-36.0	1.21	0.94	9.68	-43.3	8.3	
1,425.0	8.24	308.05	1,423.0	37.4	-44.0	3.71	3.45	-12.18	-49.3	0.7	
1,521.0	10.55	310.63	1,517.7	47.3	-56.1	2.45	2.41	2.69	-56.1	5.9	
1,616.0	11.18	321.01	1,611.0	60.2	-68.5	2.16	0.66	10.93	-59.7	18.9	
1,711.0	11.27	328.39	1,704.2	75.2	-79.1	1.51	0.09	7.77	-59.8	27.2	
1,807.0	12.77	328.57	1,798.1	92.3	-89.6	1.56	1.56	0.19	-60.9	27.1	
1,902.0	14.06	329.94	1,890.5	111.2	-100.8	1.40	1.36	1.44	-60.7	27.8	
1,997.0	13.87	330.89	1,982.7	131.1	-112.2	0.31	-0.20	1.00	-60.8	27.7	
2,092.0	13.72	330.94	2,075.0	150.9	-123.2	0.16	-0.16	0.05	-61.2	26.4	
2,187.0	13.60	331.29	2,167.3	170.6	-134.0	0.15	-0.13	0.37	-61.1	25.3	
2,281.0	13.54	331.26	2,258.7	189.9	-144.6	0.06	-0.06	-0.03	-61.1	23.9	
2,377.0	13.10	331.11	2,352.1	209.3	-155.3	0.46	-0.46	-0.16	-60.7	22.2	
2,472.0	12.65	331.00	2,444.7	227.8	-165.5	0.47	-0.47	-0.12	-59.6	20.8	
2,567.0	12.58	329.92	2,537.4	245.9	-175.7	0.26	-0.07	-1.14	-58.3	18.5	



Final PVA

<b>Company:</b>	Midland	<b>Local Co-ordinate Reference:</b>	Well #506H
<b>Project:</b>	Lea County, NM (NAD 83 NME)	<b>TVD Reference:</b>	KB = 26' @ 3373.0usft
<b>Site:</b>	Jefe 29 Fed Com	<b>MD Reference:</b>	KB = 26' @ 3373.0usft
<b>Well:</b>	#506H	<b>North Reference:</b>	Grid
<b>Wellbore:</b>	OH	<b>Survey Calculation Method:</b>	Minimum Curvature
<b>Design:</b>	OH	<b>Database:</b>	PEDM

Survey												
MD (usft)	Inc (°)	Azi (azimuth) (°)	TVD (usft)	N/S (usft)	E/W (usft)	DLeg (°/100usft)	Build (°/100usft)	Turn (°/100usft)	High to Plan (usft)	Right to Plan (usft)		
2,663.0	12.40	330.21	2,631.1	263.9	-186.1	0.20	-0.19	0.30	-56.4	17.8		
2,759.0	12.52	330.52	2,724.9	281.9	-196.3	0.14	0.12	0.32	-54.4	16.9		
2,854.0	12.18	331.39	2,817.7	299.6	-206.2	0.41	-0.36	0.92	-52.1	16.4		
2,950.0	11.89	331.38	2,911.6	317.2	-215.8	0.30	-0.30	-0.01	-49.5	14.9		
3,046.0	12.99	327.09	3,005.3	334.9	-226.4	1.50	1.15	-4.47	-48.5	10.6		
3,142.0	14.72	327.25	3,098.5	354.3	-238.9	1.80	1.80	0.17	-48.8	10.9		
3,237.0	14.32	329.95	3,190.5	374.6	-251.3	0.83	-0.42	2.84	-49.8	12.7		
3,333.0	14.07	327.88	3,283.6	394.7	-263.4	0.59	-0.26	-2.16	-51.2	10.4		
3,429.0	13.22	330.16	3,376.8	414.1	-275.1	1.05	-0.89	2.37	-50.8	11.8		
3,524.0	12.49	332.36	3,469.5	432.7	-285.3	0.93	-0.77	2.32	-49.2	12.2		
3,619.0	11.69	333.50	3,562.4	450.4	-294.3	0.88	-0.84	1.20	-46.5	11.0		
3,715.0	12.88	328.00	3,656.2	468.2	-304.3	1.74	1.24	-5.73	-45.1	5.5		
3,811.0	14.09	324.33	3,749.5	486.7	-316.8	1.54	1.26	-3.82	-45.1	3.2		
3,907.0	13.02	325.63	3,842.8	505.2	-329.7	1.16	-1.11	1.35	-45.0	5.2		
4,002.0	11.77	325.28	3,935.6	522.0	-341.3	1.32	-1.32	-0.37	-43.0	5.8		
4,098.0	14.26	322.70	4,029.1	539.4	-354.0	2.66	2.59	-2.69	-42.3	5.3		
4,194.0	13.13	322.77	4,122.4	557.5	-367.8	1.18	-1.18	0.07	-42.5	7.3		
4,290.0	12.23	324.07	4,216.1	574.4	-380.4	0.98	-0.94	1.35	-40.8	9.8		
4,386.0	13.31	324.62	4,309.7	591.7	-392.7	1.13	1.12	0.57	-39.3	11.4		
4,482.0	14.34	321.08	4,402.9	609.9	-406.6	1.39	1.07	-3.69	-40.4	10.9		
4,577.0	12.67	321.62	4,495.3	627.2	-420.4	1.76	-1.76	0.57	-40.2	13.6		
4,673.0	12.60	324.02	4,589.0	644.0	-433.1	0.55	-0.07	2.50	-38.0	17.1		
4,769.0	14.66	329.11	4,682.3	662.9	-445.5	2.48	2.15	5.30	-36.4	20.6		
4,865.0	14.64	328.06	4,775.1	683.6	-458.2	0.28	-0.02	-1.09	-38.5	19.5		
4,961.0	14.89	328.37	4,868.0	704.4	-471.1	0.27	0.26	0.32	-40.4	19.4		
5,057.0	14.43	327.90	4,960.8	725.0	-483.9	0.49	-0.48	-0.49	-42.3	18.8		
5,153.0	14.23	327.58	5,053.9	745.1	-496.6	0.22	-0.21	-0.33	-43.6	18.5		

<b>Company:</b>	Midland	<b>Local Co-ordinate Reference:</b>	Well #506H
<b>Project:</b>	Lea County, NM (NAD 83 NME)	<b>TVD Reference:</b>	KB = 26' @ 3373.0usft
<b>Site:</b>	Jefe 29 Fed Com	<b>MD Reference:</b>	KB = 26' @ 3373.0usft
<b>Well:</b>	#506H	<b>North Reference:</b>	Grid
<b>Wellbore:</b>	OH	<b>Survey Calculation Method:</b>	Minimum Curvature
<b>Design:</b>	OH	<b>Database:</b>	PEDM

Survey												
MD (usft)	Inc (°)	Azi (azimuth) (°)	TVD (usft)	N/S (usft)	E/W (usft)	DLeg (°/100usft)	Build (°/100usft)	Turn (°/100usft)	High to Plan (usft)	Right to Plan (usft)		
5,249.0	14.74	326.38	5,146.8	765.2	-509.7	0.62	0.53	-1.25	-45.4	17.8		
5,344.0	15.21	325.17	5,238.6	785.5	-523.5	0.59	0.49	-1.27	-48.0	17.5		
5,440.0	15.22	323.91	5,331.2	806.1	-538.1	0.34	0.01	-1.31	-51.1	17.7		
5,536.0	14.33	329.11	5,424.0	826.4	-551.6	1.66	-0.93	5.42	-51.3	22.6		
5,631.0	13.84	331.94	5,516.2	846.5	-563.0	0.89	-0.52	2.98	-51.0	23.9		
5,727.0	14.06	328.04	5,609.4	866.6	-574.6	1.01	0.23	-4.06	-53.0	19.5		
5,823.0	12.07	327.86	5,702.9	885.0	-586.1	2.07	-2.07	-0.19	-52.1	19.1		
5,919.0	11.70	329.65	5,796.8	901.9	-596.3	0.54	-0.39	1.86	-48.6	20.2		
6,015.0	12.15	329.61	5,890.7	919.0	-606.4	0.47	0.47	-0.04	-45.8	19.3		
6,111.0	10.51	333.03	5,984.9	935.5	-615.4	1.85	-1.71	3.56	-40.9	20.4		
6,207.0	9.99	333.85	6,079.3	950.8	-623.1	0.56	-0.54	0.85	-35.1	18.6		
6,302.0	7.85	339.15	6,173.2	964.2	-629.0	2.41	-2.25	5.58	-25.9	18.0		
6,398.0	6.66	341.64	6,268.4	975.6	-633.1	1.28	-1.24	2.59	-15.5	13.9		
6,494.0	6.34	339.45	6,363.8	985.9	-636.7	0.42	-0.33	-2.28	-7.6	9.1		
6,590.0	6.01	339.27	6,459.2	995.6	-640.4	0.34	-0.34	-0.19	-1.8	5.7		
6,686.0	5.45	339.94	6,554.8	1,004.5	-643.7	0.59	-0.58	0.70	1.6	2.9		
6,782.0	4.06	345.82	6,650.4	1,012.1	-646.1	1.53	-1.45	6.12	3.6	0.0		
6,878.0	2.89	341.85	6,746.2	1,017.7	-647.7	1.24	-1.22	-4.14	4.4	-1.7		
6,973.0	2.90	338.86	6,841.1	1,022.2	-649.3	0.16	0.01	-3.15	3.3	-2.3		
7,070.0	2.91	338.93	6,938.0	1,026.8	-651.1	0.01	0.01	0.07	-1.0	-2.4		
7,165.0	2.91	332.61	7,032.9	1,031.2	-653.1	0.34	0.00	-6.65	-5.5	-2.8		
7,261.0	2.35	334.74	7,128.8	1,035.2	-655.0	0.59	-0.58	2.22	-10.0	-2.5		
7,357.0	2.43	328.14	7,224.7	1,038.7	-656.9	0.30	0.08	-6.87	-13.7	-3.9		
7,452.0	2.29	320.03	7,319.6	1,041.8	-659.2	0.38	-0.15	-8.54	-16.9	-6.1		
7,548.0	2.16	313.90	7,415.5	1,044.6	-661.7	0.28	-0.14	-6.39	-19.9	-8.0		
7,644.0	2.21	298.97	7,511.5	1,046.7	-664.7	0.59	0.05	-15.55	-20.7	-13.3		
7,740.0	1.81	296.12	7,607.4	1,048.3	-667.7	0.43	-0.42	-2.97	-23.4	-14.4		



Final PVA

<b>Company:</b>	Midland	<b>Local Co-ordinate Reference:</b>	Well #506H
<b>Project:</b>	Lea County, NM (NAD 83 NME)	<b>TVD Reference:</b>	KB = 26' @ 3373.0usft
<b>Site:</b>	Jefe 29 Fed Com	<b>MD Reference:</b>	KB = 26' @ 3373.0usft
<b>Well:</b>	#506H	<b>North Reference:</b>	Grid
<b>Wellbore:</b>	OH	<b>Survey Calculation Method:</b>	Minimum Curvature
<b>Design:</b>	OH	<b>Database:</b>	PEDM

Survey												
MD (usft)	Inc (°)	Azi (azimuth) (°)	TVD (usft)	N/S (usft)	E/W (usft)	DLeg (°/100usft)	Build (°/100usft)	Turn (°/100usft)	High to Plan (usft)	Right to Plan (usft)		
7,836.0	1.87	291.17	7,703.4	1,049.5	-670.5	0.18	0.06	-5.16	-25.1	-16.5		
7,932.0	1.30	276.08	7,799.3	1,050.2	-673.0	0.73	-0.59	-15.72	-22.6	-22.9		
8,027.0	1.01	281.43	7,894.3	1,050.5	-674.9	0.33	-0.31	5.63	-26.5	-20.6		
8,123.0	1.20	269.11	7,990.3	1,050.6	-676.7	0.32	0.20	-12.83	-23.3	-26.0		
8,219.0	1.07	248.16	8,086.3	1,050.3	-678.6	0.45	-0.14	-21.82	-14.3	-33.0		
8,315.0	1.35	245.00	8,182.2	1,049.5	-680.4	0.30	0.29	-3.29	-14.5	-33.8		
8,411.0	1.25	228.92	8,278.2	1,048.3	-682.3	0.39	-0.10	-16.75	-6.7	-36.8		
8,507.0	1.08	236.78	8,374.2	1,047.1	-683.8	0.24	-0.18	8.19	-13.7	-35.4		
8,603.0	1.27	219.60	8,470.2	1,045.8	-685.2	0.41	0.20	-17.90	-4.5	-38.1		
8,699.0	1.77	205.43	8,566.1	1,043.6	-686.5	0.65	0.52	-14.76	2.4	-38.3		
8,795.0	1.58	207.93	8,662.1	1,041.1	-687.8	0.21	-0.20	2.60	-2.1	-38.3		
8,891.0	1.62	221.58	8,758.1	1,038.9	-689.3	0.40	0.04	14.22	-13.7	-36.4		
8,987.0	0.30	225.87	8,854.1	1,037.7	-690.4	1.38	-1.37	4.47	-18.0	-35.2		
9,083.0	1.90	29.80	8,950.0	1,039.0	-689.8	2.28	1.67	170.76	6.2	38.9		
9,178.0	2.17	29.41	9,045.0	1,041.9	-688.1	0.28	0.28	-0.41	2.5	38.9		
9,274.0	1.64	359.90	9,140.9	1,044.8	-687.2	1.14	-0.55	-30.74	-19.9	34.2		
9,370.0	1.37	350.59	9,236.9	1,047.3	-687.4	0.38	-0.28	-9.70	-27.7	30.3		
9,466.0	1.78	337.43	9,332.9	1,049.9	-688.2	0.57	0.43	-13.71	-36.5	23.0		
9,562.0	2.34	319.45	9,428.8	1,052.7	-690.0	0.88	0.58	-18.73	-45.1	10.1		
9,649.0	1.82	319.39	9,515.7	1,055.1	-692.1	0.60	-0.60	-0.07	-48.3	10.1		
9,788.0	1.46	302.59	9,654.7	1,057.8	-695.0	0.43	-0.26	-12.09	-53.0	-5.0		
9,842.0	5.80	178.39	9,708.6	1,055.4	-695.5	12.46	8.04	-230.01	31.5	-41.7		
<b>KOP, MD:9842.0', TVD:9708.6',N/S:1055.4', E/W:-695.5', INC:5.80</b>												
9,884.0	10.99	173.45	9,750.1	1,049.3	-695.0	12.46	12.36	-11.75	29.0	-39.1		
9,980.0	24.62	173.86	9,841.3	1,020.2	-691.8	14.20	14.20	0.43	9.8	-38.1		
10,075.0	28.20	167.02	9,926.4	978.6	-684.6	4.94	3.77	-7.20	-4.0	-33.3		





Final PVA

<b>Company:</b>	Midland	<b>Local Co-ordinate Reference:</b>	Well #506H
<b>Project:</b>	Lea County, NM (NAD 83 NME)	<b>TVD Reference:</b>	KB = 26' @ 3373.0usft
<b>Site:</b>	Jefe 29 Fed Com	<b>MD Reference:</b>	KB = 26' @ 3373.0usft
<b>Well:</b>	#506H	<b>North Reference:</b>	Grid
<b>Wellbore:</b>	OH	<b>Survey Calculation Method:</b>	Minimum Curvature
<b>Design:</b>	OH	<b>Database:</b>	PEDM

Survey											
MD (usft)	Inc (°)	Azi (azimuth) (°)	TVD (usft)	N/S (usft)	E/W (usft)	DLeg (°/100usft)	Build (°/100usft)	Turn (°/100usft)	High to Plan (usft)	Right to Plan (usft)	
10,083.0	28.80	166.69	9,933.4	974.9	-683.8	7.78	7.53	-4.10	-5.0	-32.7	
<b>FTP Crossing, MD:10083.0', TVD:9933.4',N/S:974.9', E/W:-683.8', INC:28.80</b>											
10,171.0	35.47	163.76	10,007.9	929.7	-671.7	7.78	7.58	-3.33	-14.9	-23.2	
10,267.0	46.64	170.74	10,080.2	868.3	-658.3	12.56	11.64	7.27	-27.4	-9.3	
10,363.0	58.09	175.28	10,138.8	793.0	-649.3	12.50	11.93	4.73	-40.0	0.7	
10,459.0	66.39	173.66	10,183.5	708.5	-641.1	8.77	8.65	-1.69	-51.6	7.8	
10,555.0	68.04	182.65	10,220.7	620.1	-638.3	8.80	1.72	9.36	-53.1	13.8	
10,651.0	75.34	185.39	10,250.8	529.3	-644.7	8.07	7.60	2.85	-45.3	6.7	
10,747.0	75.72	184.08	10,274.8	436.7	-652.4	1.38	0.40	-1.36	-27.3	-2.0	
10,843.0	83.99	179.00	10,291.7	342.3	-654.8	10.06	8.61	-5.29	-11.3	-4.9	
10,939.0	85.15	177.90	10,300.8	246.8	-652.3	1.66	1.21	-1.15	-3.1	-2.8	
11,034.0	91.82	179.46	10,303.3	151.9	-650.1	7.21	7.02	1.64	-1.5	-1.0	
11,130.0	91.04	179.66	10,300.9	55.9	-649.3	0.84	-0.81	0.21	-4.8	-0.7	
11,226.0	91.43	179.91	10,298.9	-40.0	-649.0	0.48	0.41	0.26	-7.8	-0.8	
11,322.0	87.92	179.05	10,299.4	-136.0	-648.1	3.76	-3.66	-0.90	-8.1	-0.3	
11,418.0	89.10	177.22	10,301.9	-231.9	-645.0	2.27	1.23	-1.91	-6.6	2.3	
11,555.0	87.31	178.40	10,306.2	-368.8	-639.7	1.56	-1.31	0.86	-3.6	7.0	
11,625.0	85.37	178.61	10,310.7	-438.6	-637.9	2.79	-2.77	0.30	0.2	8.5	
11,706.0	85.73	176.92	10,317.0	-519.3	-634.8	2.13	0.44	-2.09	5.7	11.3	
11,803.0	86.38	178.73	10,323.6	-616.0	-631.1	1.98	0.67	1.87	11.5	14.5	
11,899.0	87.84	177.54	10,328.5	-711.8	-628.0	1.96	1.52	-1.24	15.4	17.2	
11,994.0	88.99	183.19	10,331.1	-806.7	-628.6	6.07	1.21	5.95	17.2	16.1	
12,090.0	88.99	182.34	10,332.8	-902.6	-633.2	0.89	0.00	-0.89	18.0	11.1	
12,186.0	88.85	182.50	10,334.6	-998.5	-637.3	0.22	-0.15	0.17	18.9	6.6	
12,282.0	90.17	182.12	10,335.4	-1,094.4	-641.1	1.43	1.37	-0.40	18.8	2.3	
12,377.0	91.21	180.58	10,334.3	-1,189.4	-643.4	1.96	1.09	-1.62	16.7	-0.4	
12,473.0	88.65	181.05	10,334.4	-1,285.4	-644.7	2.71	-2.67	0.49	16.0	-2.2	

<b>Company:</b>	Midland	<b>Local Co-ordinate Reference:</b>	Well #506H
<b>Project:</b>	Lea County, NM (NAD 83 NME)	<b>TVD Reference:</b>	KB = 26' @ 3373.0usft
<b>Site:</b>	Jefe 29 Fed Com	<b>MD Reference:</b>	KB = 26' @ 3373.0usft
<b>Well:</b>	#506H	<b>North Reference:</b>	Grid
<b>Wellbore:</b>	OH	<b>Survey Calculation Method:</b>	Minimum Curvature
<b>Design:</b>	OH	<b>Database:</b>	PEDM

Survey												
MD (usft)	Inc (°)	Azi (azimuth) (°)	TVD (usft)	N/S (usft)	E/W (usft)	DLeg (°/100usft)	Build (°/100usft)	Turn (°/100usft)	High to Plan (usft)	Right to Plan (usft)		
12,569.0	89.16	182.20	10,336.2	-1,381.3	-647.5	1.31	0.53	1.20	16.9	-5.3		
12,664.0	87.56	181.94	10,338.9	-1,476.2	-650.9	1.71	-1.68	-0.27	18.7	-9.2		
12,760.0	87.79	182.69	10,342.8	-1,572.0	-654.8	0.82	0.24	0.78	21.7	-13.5		
12,856.0	88.51	182.07	10,345.9	-1,667.9	-658.8	0.99	0.75	-0.65	23.9	-17.9		
12,952.0	88.68	178.96	10,348.3	-1,763.9	-659.6	3.24	0.18	-3.24	25.3	-19.2		
13,048.0	88.40	175.87	10,350.7	-1,859.7	-655.3	3.23	-0.29	-3.22	26.9	-15.3		
13,144.0	92.41	176.55	10,350.1	-1,955.5	-648.9	4.24	4.18	0.71	25.3	-9.4		
13,261.0	92.86	179.75	10,344.7	-2,072.3	-645.2	2.76	0.38	2.74	18.8	-6.2		
13,357.0	92.61	179.86	10,340.1	-2,168.2	-644.8	0.28	-0.26	0.11	13.3	-6.3		
13,453.0	90.78	180.21	10,337.3	-2,264.1	-644.9	1.94	-1.91	0.36	9.6	-6.8		
13,569.0	89.35	180.50	10,337.1	-2,380.1	-645.6	1.26	-1.23	0.25	8.3	-8.0		
13,645.0	89.78	181.06	10,337.7	-2,456.1	-646.7	0.93	0.57	0.74	8.2	-9.4		
13,741.0	88.71	180.87	10,339.0	-2,552.1	-648.3	1.13	-1.11	-0.20	8.5	-11.4		
13,836.0	88.68	180.45	10,341.1	-2,647.1	-649.4	0.44	-0.03	-0.44	9.8	-12.9		
13,932.0	89.97	179.42	10,342.3	-2,743.0	-649.3	1.72	1.34	-1.07	10.0	-13.3		
14,028.0	85.62	177.37	10,346.0	-2,838.9	-646.6	5.01	-4.53	-2.14	12.8	-11.0		
14,139.0	88.12	177.77	10,352.0	-2,949.6	-641.9	2.28	2.25	0.36	17.8	-6.8		
14,229.0	88.82	176.96	10,354.4	-3,039.5	-637.7	1.19	0.78	-0.90	19.4	-3.1		
14,324.0	89.13	177.33	10,356.1	-3,134.4	-633.0	0.51	0.33	0.39	20.2	1.2		
14,421.0	88.60	175.56	10,358.0	-3,231.2	-627.0	1.90	-0.55	-1.82	21.2	6.8		
14,517.0	89.75	176.79	10,359.4	-3,326.9	-620.6	1.75	1.20	1.28	21.7	12.8		
14,613.0	91.32	179.02	10,358.5	-3,422.9	-617.1	2.84	1.64	2.32	19.8	15.8		
14,708.0	91.21	178.90	10,356.4	-3,517.8	-615.4	0.17	-0.12	-0.13	16.8	17.1		
14,804.0	88.68	178.41	10,356.5	-3,613.8	-613.1	2.68	-2.64	-0.51	16.0	19.0		
14,900.0	88.71	179.52	10,358.7	-3,709.7	-611.4	1.16	0.03	1.16	17.3	20.3		
14,996.0	89.92	179.42	10,359.9	-3,805.7	-610.5	1.26	1.26	-0.10	17.5	20.7		
15,092.0	90.08	180.43	10,359.9	-3,901.7	-610.4	1.07	0.17	1.05	16.6	20.4		

<b>Company:</b>	Midland	<b>Local Co-ordinate Reference:</b>	Well #506H
<b>Project:</b>	Lea County, NM (NAD 83 NME)	<b>TVD Reference:</b>	KB = 26' @ 3373.0usft
<b>Site:</b>	Jefe 29 Fed Com	<b>MD Reference:</b>	KB = 26' @ 3373.0usft
<b>Well:</b>	#506H	<b>North Reference:</b>	Grid
<b>Wellbore:</b>	OH	<b>Survey Calculation Method:</b>	Minimum Curvature
<b>Design:</b>	OH	<b>Database:</b>	PEDM

Survey												
MD (usft)	Inc (°)	Azi (azimuth) (°)	TVD (usft)	N/S (usft)	E/W (usft)	DLeg (°/100usft)	Build (°/100usft)	Turn (°/100usft)	High to Plan (usft)	Right to Plan (usft)		
15,188.0	88.43	179.87	10,361.1	-3,997.7	-610.6	1.82	-1.72	-0.58	17.0	19.7		
15,284.0	89.27	179.03	10,363.0	-4,093.7	-609.7	1.24	0.87	-0.87	18.0	20.2		
15,372.0	90.00	178.94	10,363.6	-4,181.7	-608.1	0.84	0.83	-0.10	17.7	21.4		
15,498.0	89.78	177.30	10,363.8	-4,307.6	-604.0	1.31	-0.17	-1.30	16.8	24.9		
15,571.0	91.93	178.34	10,362.7	-4,380.5	-601.2	3.27	2.95	1.42	15.0	27.4		
15,666.0	92.97	178.88	10,358.7	-4,475.4	-598.9	1.23	1.09	0.57	10.0	29.2		
15,762.0	90.76	182.11	10,355.6	-4,571.3	-599.8	4.08	-2.30	3.36	6.0	28.0		
15,858.0	88.96	181.41	10,355.8	-4,667.3	-602.7	2.01	-1.87	-0.73	5.3	24.6		
15,954.0	87.59	182.18	10,358.7	-4,763.2	-605.7	1.64	-1.43	0.80	7.3	21.2		
16,110.0	88.63	180.43	10,363.8	-4,919.1	-609.3	1.30	0.67	-1.12	11.0	16.9		
16,243.0	90.76	183.89	10,364.5	-5,051.9	-614.3	3.05	1.60	2.60	10.4	11.3		
16,339.0	88.99	182.90	10,364.7	-5,147.8	-620.0	2.11	-1.84	-1.03	9.7	5.2		
16,434.0	90.31	185.98	10,365.3	-5,242.5	-627.3	3.53	1.39	3.24	9.4	-2.6		
16,592.0	94.07	187.73	10,359.3	-5,399.2	-646.1	2.62	2.38	1.11	2.1	-22.1		
16,688.0	88.63	179.89	10,357.0	-5,494.8	-652.5	9.94	-5.67	-8.17	-1.3	-28.9		
16,723.0	89.02	179.83	10,357.7	-5,529.8	-652.4	1.13	1.11	-0.17	-0.9	-29.0		
16,819.0	88.04	178.73	10,360.2	-5,625.8	-651.2	1.53	-1.02	-1.15	0.7	-28.2		
16,914.0	87.90	179.84	10,363.6	-5,720.7	-650.0	1.18	-0.15	1.17	3.1	-27.5		
17,010.0	91.09	178.64	10,364.4	-5,816.7	-648.8	3.55	3.32	-1.25	3.1	-26.6		
17,106.0	90.31	178.81	10,363.2	-5,912.7	-646.6	0.83	-0.81	0.18	1.0	-24.9		
17,202.0	89.66	177.63	10,363.3	-6,008.6	-643.6	1.40	-0.68	-1.23	0.1	-22.4		
17,298.0	91.88	178.37	10,362.0	-6,104.5	-640.3	2.44	2.31	0.77	-2.1	-19.5		
17,394.0	90.93	177.64	10,359.6	-6,200.5	-636.9	1.25	-0.99	-0.76	-5.4	-16.6		
17,490.0	88.49	177.25	10,360.1	-6,296.4	-632.7	2.57	-2.54	-0.41	-5.8	-12.7		
17,586.0	90.28	179.26	10,361.1	-6,392.3	-629.7	2.80	1.86	2.09	-5.7	-10.2		
17,778.0	86.95	176.43	10,365.8	-6,584.1	-622.5	2.28	-1.73	-1.47	-2.8	-3.9		

<b>Company:</b>	Midland	<b>Local Co-ordinate Reference:</b>	Well #506H
<b>Project:</b>	Lea County, NM (NAD 83 NME)	<b>TVD Reference:</b>	KB = 26' @ 3373.0usft
<b>Site:</b>	Jefe 29 Fed Com	<b>MD Reference:</b>	KB = 26' @ 3373.0usft
<b>Well:</b>	#506H	<b>North Reference:</b>	Grid
<b>Wellbore:</b>	OH	<b>Survey Calculation Method:</b>	Minimum Curvature
<b>Design:</b>	OH	<b>Database:</b>	PEDM

MD (usft)	Inc (°)	Azi (azimuth) (°)	TVD (usft)	N/S (usft)	E/W (usft)	DLeg (°/100usft)	Build (°/100usft)	Turn (°/100usft)	High to Plan (usft)	Right to Plan (usft)
17,857.0	87.87	176.37	10,369.4	-6,662.8	-617.6	1.17	1.16	-0.08	0.0	0.7
<b>Last MWD Survey (MD=17857.0')</b>										
17,920.0	87.87	176.37	10,371.7	-6,725.7	-613.6	0.00	0.00	0.00	1.7	4.4
<b>Projection to Bit (MD=17920.0')</b>										

Measured Depth (usft)	Vertical Depth (usft)	Local Coordinates		Comment
		+N/-S (usft)	+E/-W (usft)	
9,842.0	9,708.6	1,055.4	-695.5	KOP, MD:9842.0', TVD:9708.6',N/S:1055.4', E/W:-695.5', INC:5.80
10,083.0	9,933.4	974.9	-683.8	FTP Crossing, MD:10083.0', TVD:9933.4',N/S:974.9', E/W:-683.8', INC:28.80
17,857.0	10,369.4	-6,662.8	-617.6	Last MWD Survey (MD=17857.0')
17,920.0	10,371.7	-6,725.7	-613.6	Projection to Bit (MD=17920.0')

Checked By: \_\_\_\_\_ Approved By: \_\_\_\_\_ Date: \_\_\_\_\_

I CERTIFY THIS SURVEY TO BE TRUE AND CORRECT TO THE BEST OF MY BELIEF AND KNOWLEDGE  
 KAY MADDOX 01/03/2022



# Lea County, NM (NAD 83 NME)

Jefe 29 Fed Com #506H

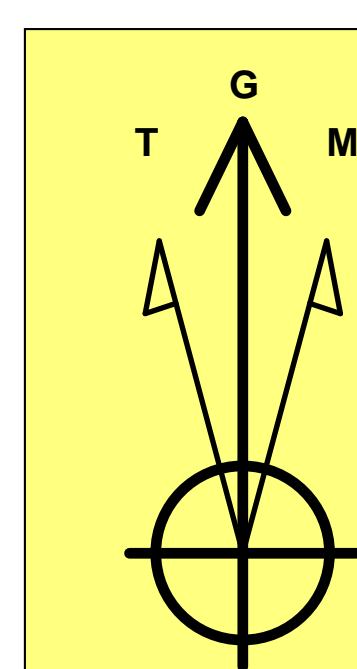
Plan #1

## PROJECT DETAILS: Lea County, NM (NAD 83 NME)

Geodetic System: US State Plane 1983  
 Datum: North American Datum 1983  
 Ellipsoid: GRS 1980  
 Zone: New Mexico Eastern Zone  
 System Datum: Mean Sea Level

## WELL DETAILS: #506H

KB = 26' @ 3373.0usft 3347.0  
 Northing 400128.00 Easting 740280.00 Latitude 32° 5' 54.247 N Longitude 103° 41' 27.159 W



Azimuths to Grid North  
 True North: -0.34°  
 Magnetic North: 6.24°  
 Magnetic Field Strength: 47396.4nT  
 Dip Angle: 59.76°  
 Date: 7/26/2021  
 Model: IGRF2020

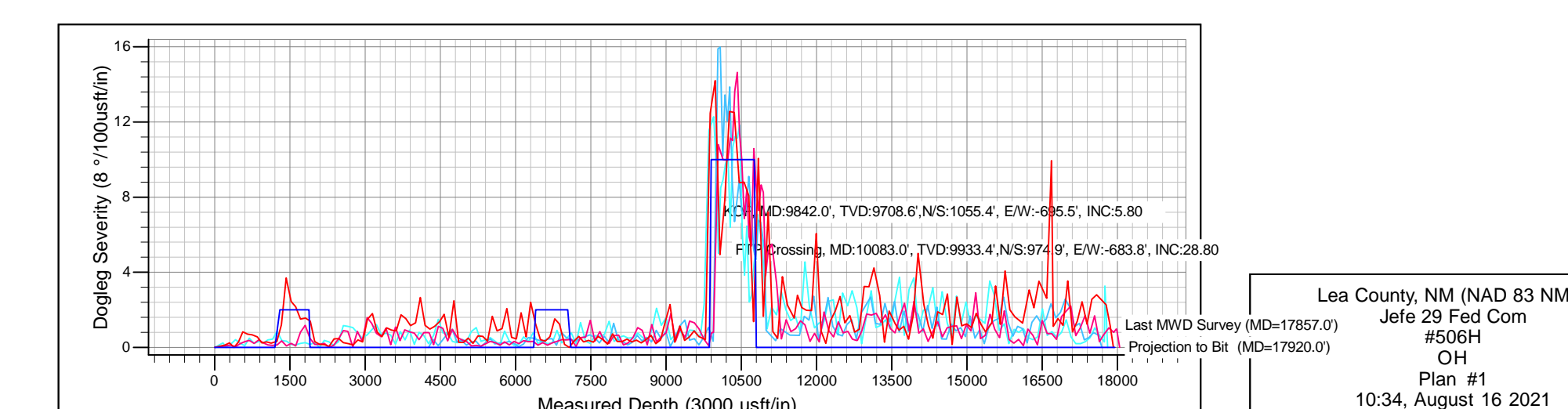
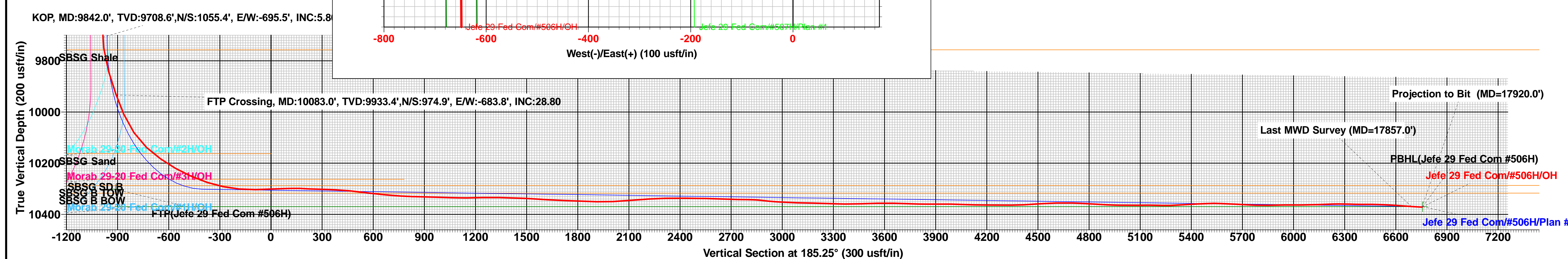
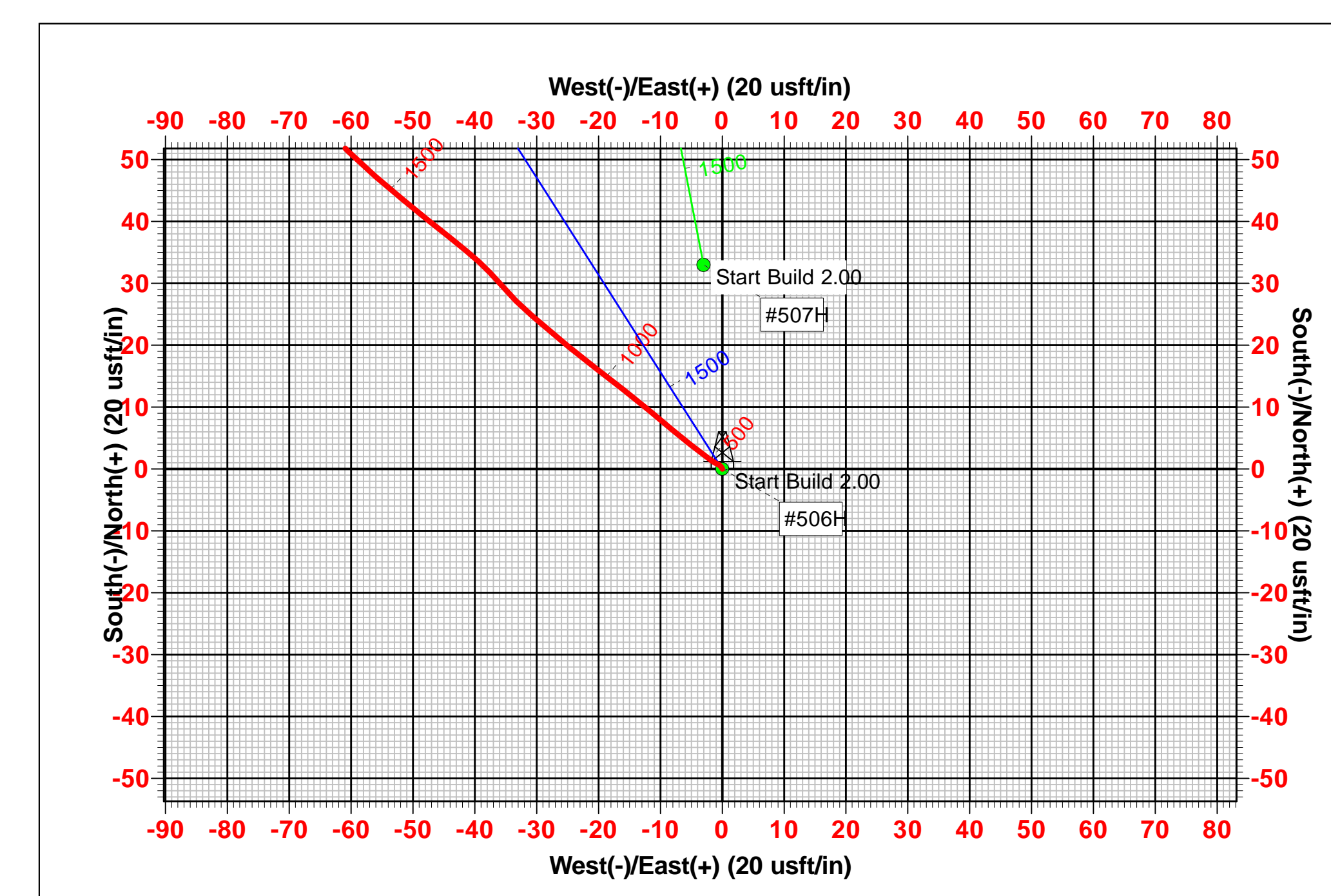
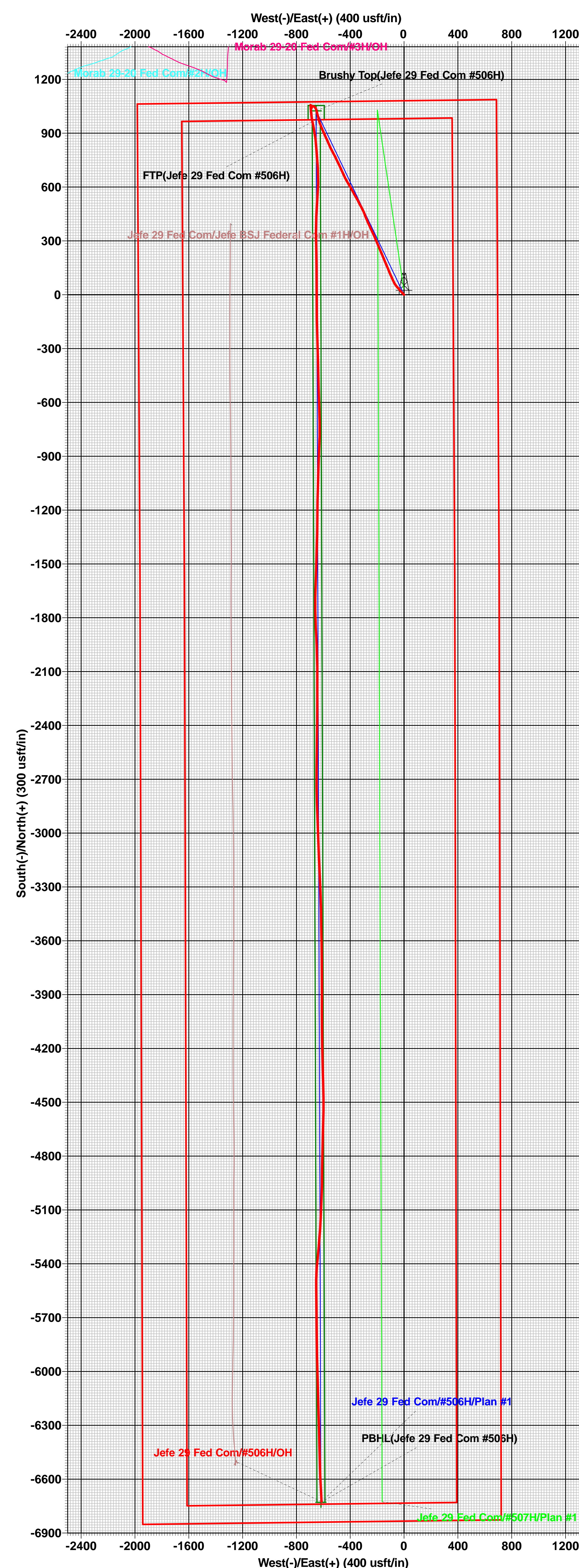
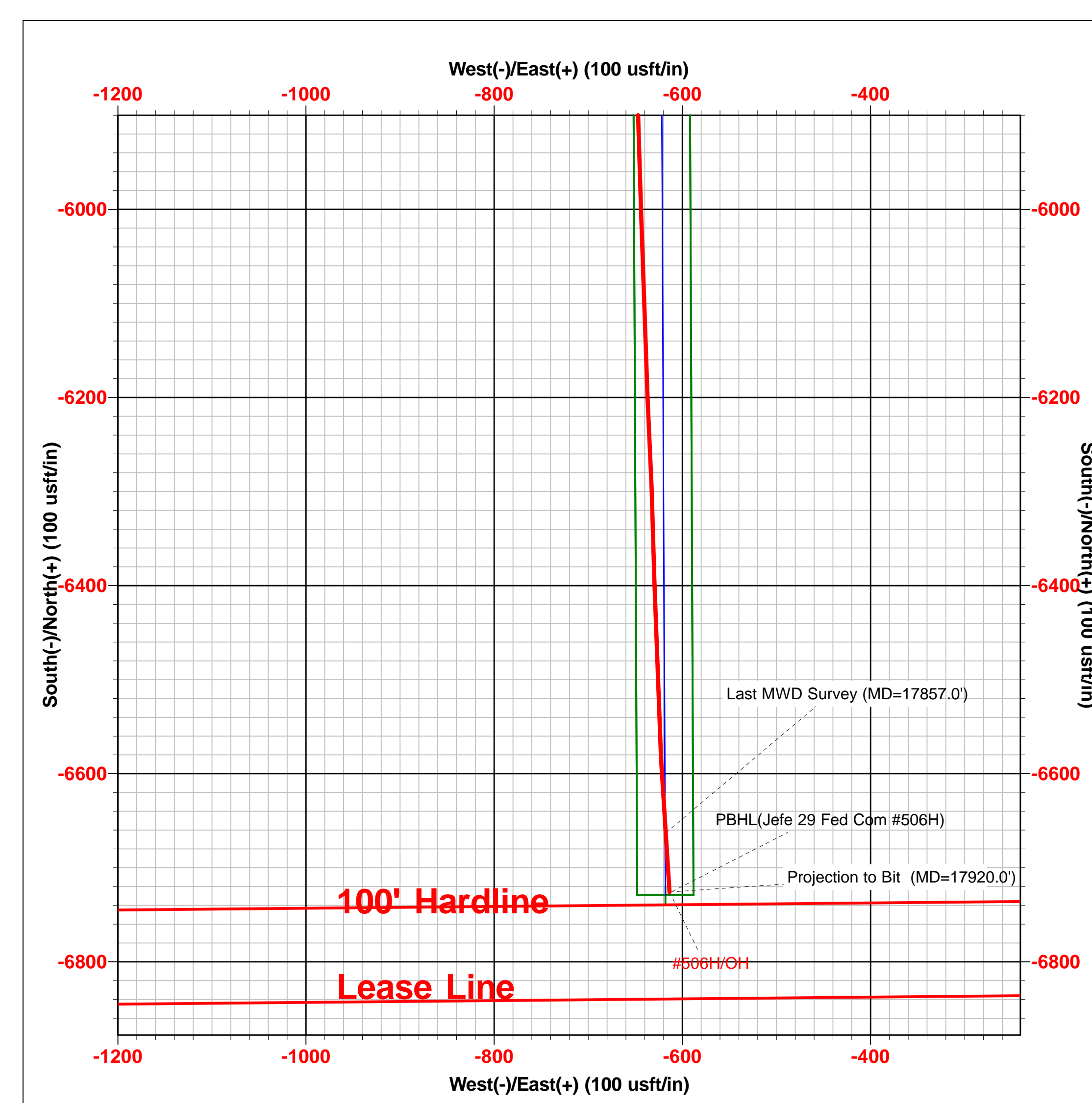
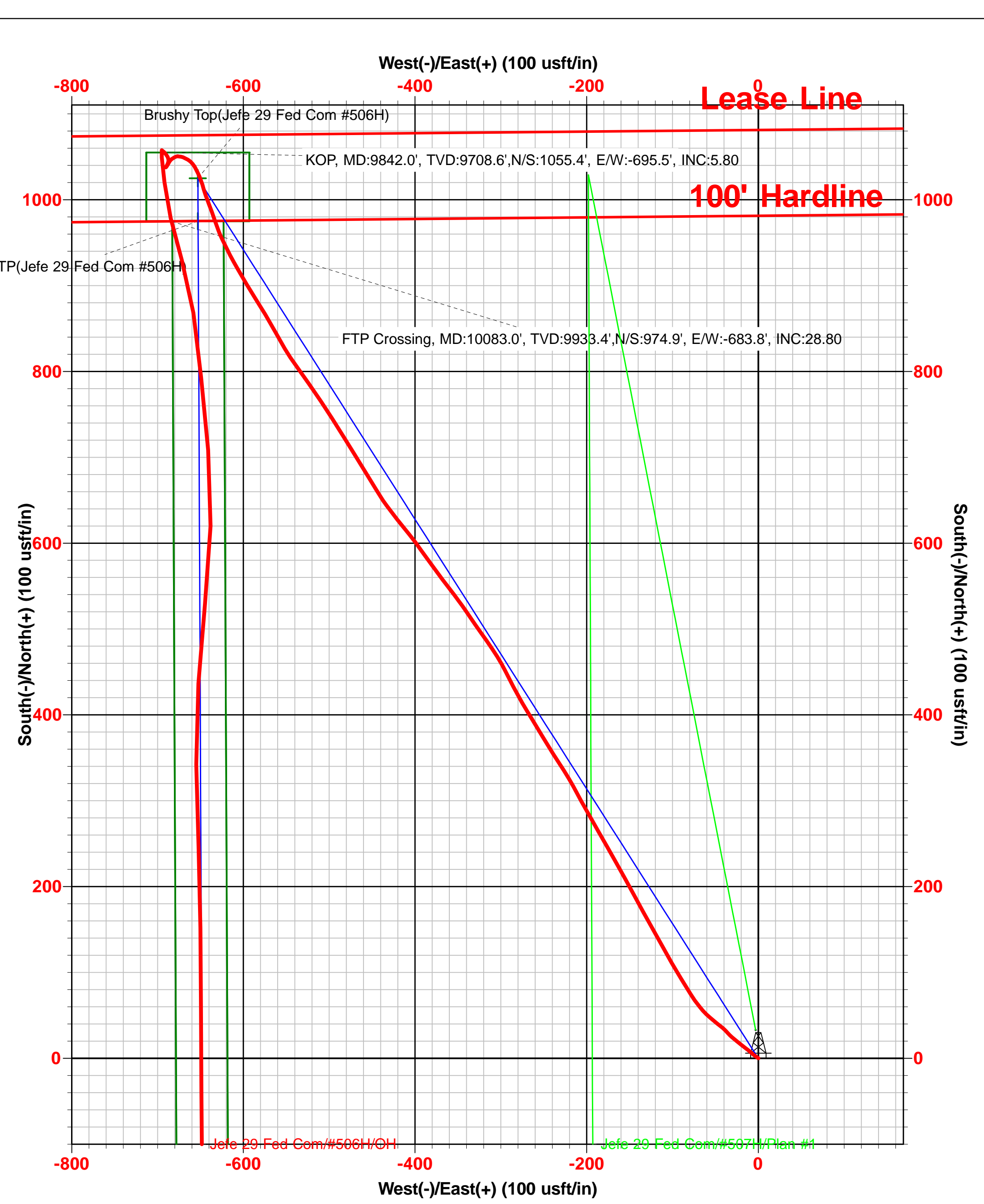
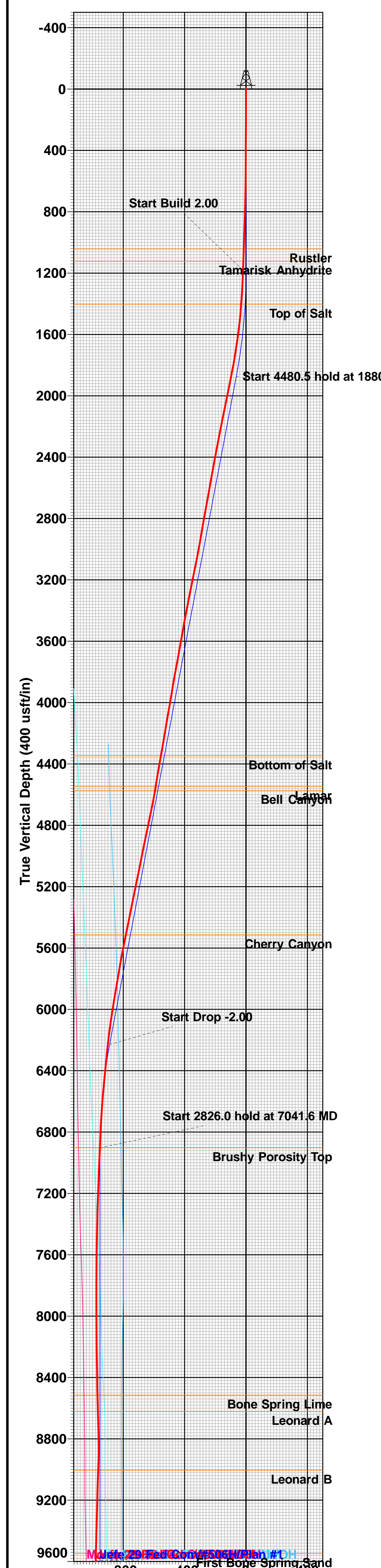
To convert a Magnetic Direction to a Grid Direction, Add 6.24°  
 To convert a Magnetic Direction to a True Direction, Add 6.58° East  
 To convert a True Direction to a Grid Direction, Subtract 0.34°

## SECTION DETAILS

Sec	MD	Inc	Azi	TVD	+N/-S	+E/-W	Dleg	TFace	VSect	Target
1	0.0	0.00	0.00	0.0	0.0	0.0	0.00	0.00	0.0	
2	1200.0	0.00	0.00	1200.0	0.0	0.0	0.00	0.00	0.0	
3	1880.6	13.61	327.50	1874.2	67.9	-43.2	2.00	327.50	-63.6	
4	6361.0	13.61	327.50	6228.8	957.1	-609.8	0.00	0.00	-897.4	
5	7041.6	0.00	0.00	6903.0	1025.0	-653.0	2.00	180.00	-961.0	Brushy Top(Jefe 29 Fed Com #506H)
6	9867.6	0.00	0.00	9729.0	1025.0	-653.0	0.00	0.00	-961.0	
7	10762.2	89.46	179.74	10301.9	457.5	-650.4	10.00	179.74	-396.1	
8	17949.0	89.46	179.74	10370.0	-6729.0	-618.0	0.00	0.00	6757.3	PBHL(Jefe 29 Fed Com #506H)

## WELLBORE TARGET DETAILS (MAP CO-ORDINATES)

Name	TVD	+N/-S	+E/-W	Northing	Easting
Brushy Top(Jefe 29 Fed Com #506H)	6903.0	1025.0	-653.0	401153.00	739627.00
FTP(Jefe 29 Fed Com #506H)	10302.0	975.0	-653.0	401103.00	739627.00
PBHL(Jefe 29 Fed Com #506H)	10370.0	-6729.0	-618.0	393399.00	739662.00



Intent  As Drilled

API #									
Operator Name:					Property Name:				Well Number

Kick Off Point (KOP)

UL	Section	Township	Range	Lot	Feet	From N/S	Feet	From E/W	County
Latitude					Longitude				NAD

First Take Point (FTP)

UL	Section	Township	Range	Lot	Feet	From N/S	Feet	From E/W	County
Latitude					Longitude				NAD

Last Take Point (LTP)

UL	Section	Township	Range	Lot	Feet	From N/S	Feet	From E/W	County
Latitude					Longitude				NAD

Is this well the defining well for the Horizontal Spacing Unit?

Is this well an infill well?

If infill is yes please provide API if available, Operator Name and well number for Defining well for Horizontal Spacing Unit.

API #									
Operator Name:					Property Name:				Well Number

KZ 06/29/2018

Submit To Appropriate District Office Two Copies District I 1625 N. French Dr., Hobbs, NM 88240 District II 811 S. First St., Artesia, NM 88210 District III 1000 Rio Brazos Rd., Aztec, NM 87410 District IV 1220 S. St. Francis Dr., Santa Fe, NM 87505	<b>State of New Mexico</b> <b>Energy, Minerals and Natural Resources</b>  <b>Oil Conservation Division</b> <b>1220 South St. Francis Dr.</b> <b>Santa Fe, NM 87505</b>	<b>Form C-105</b> Revised August 1, 2011
		1. WELL API NO. <b>30-025-48841</b>
		2. Type of Lease <input type="checkbox"/> STATE <input type="checkbox"/> FEE <input checked="" type="checkbox"/> FED/INDIAN
		3. State Oil & Gas Lease No.

**WELL COMPLETION OR RECOMPLETION REPORT AND LOG**

4. Reason for filing: <input checked="" type="checkbox"/> <b>COMPLETION REPORT</b> (Fill in boxes #1 through #31 for State and Fee wells only)  <input type="checkbox"/> <b>C-144 CLOSURE ATTACHMENT</b> (Fill in boxes #1 through #9, #15 Date Rig Released and #32 and/or #33; attach this and the plat to the C-144 closure report in accordance with 19.15.17.13.K NMAC)	5. Lease Name or Unit Agreement Name <b>JEFE 29 FEDERAL COM</b>  6. Well Number: <b>506H</b>
---	--

7. Type of Completion:  
 NEW WELL     WORKOVER     DEEPENING     PLUGBACK     DIFFERENT RESERVOIR     OTHER

8. Name of Operator <b>EOG RESOURCES INC</b>	9. OGRID <b>7377</b>
---	-------------------------

10. Address of Operator <b>PO BOX 2267 MIDLAND, TEXAS 79702</b>	11. Pool name or Wildcat <b>WC025 G08 S253235G; LOWER BONE SPRING</b>
--	--

12. Location	Unit Ltr	Section	Township	Range	Lot	Feet from the	N/S Line	Feet from the	E/W Line	County
<b>Surface:</b>	I	29	25S	32E		1554	SOUTH	695	EAST	LEA
<b>BH:</b>	O	32	25S	32E		112	SOUTH	1335	EAST	LEA

13. Date Spudded <b>07/06/2021</b>	14. Date T.D. Reached <b>08/04/2021</b>	15. Date Rig Released <b>08/05/2021</b>	16. Date Completed (Ready to Produce) <b>12/12/2021</b>	17. Elevations (DF and RKB, RT, GR, etc.) <b>3347' GL</b>
---------------------------------------	--	--	--	--

18. Total Measured Depth of Well <b>MD 17,920' TVD 10,371'</b>	19. Plug Back Measured Depth <b>MD 17,888' TVD 10,371'</b>	20. Was Directional Survey Made? <b>YES</b>	21. Type Electric and Other Logs Run <b>None</b>
---	---	--	---

22. Producing Interval(s), of this completion - Top, Bottom, Name  
**BONE SPRING 10,745 - 17,888'**

**23. CASING RECORD (Report all strings set in well)**

CASING SIZE	WEIGHT LB./FT.	DEPTH SET	HOLE SIZE	CEMENTING RECORD	AMOUNT PULLED
9 5/8"	36# J-55	1,183'	12 1/4"	510 CL C/CIRC	
7 5/8"	29.7# ECP 110	9,692'	8 3/4"	1340 CL C & H/CIRC	
5 1/2"	20# ICYP 110	17,898'	6 3/4"	750 CL H TOC 1502' CBL	

**24. LINER RECORD**

SIZE	TOP	BOTTOM	SACKS CEMENT	SCREEN

**25. TUBING RECORD**

SIZE	DEPTH SET	PACKER SET

26. Perforation record (interval, size, and number) <b>10,745 - 17,888' 3 1/8", 1440 holes</b>	27. ACID, SHOT, FRACTURE, CEMENT, SQUEEZE, ETC. DEPTH INTERVAL    AMOUNT AND KIND MATERIAL USED <b>10,745 - 17,888'    FRAC W/17,809,535 lbs proppant, 289,547 bbls load fld</b>
---	--

**28. PRODUCTION**

Date First Production <b>12/12/2021</b>	Production Method ( <i>Flowing, gas lift, pumping - Size and type pump</i> ) <b>Flowing</b>	Well Status ( <i>Prod. or Shut-in</i> ) <b>Producing</b>
--	--	---

Date of Test <b>12/22/2021</b>	Hours Tested <b>24</b>	Choke Size <b>128</b>	Prod'n For Test Period	Oil - Bbl <b>1543</b>	Gas - MCF <b>3499</b>	Water - Bbl. <b>6048</b>	Gas - Oil Ratio <b>2268</b>
-----------------------------------	---------------------------	--------------------------	------------------------	--------------------------	--------------------------	-----------------------------	--------------------------------

Flow Tubing Press.	Casing Pressure <b>572</b>	Calculated 24-Hour Rate	Oil - Bbl.	Gas - MCF	Water - Bbl.	Oil Gravity - API - ( <i>Corr.</i> ) <b>46</b>
--------------------	-------------------------------	-------------------------	------------	-----------	--------------	---

29. Disposition of Gas ( <i>Sold, used for fuel, vented, etc.</i> ) <b>SOLD</b>	30. Test Witnessed By
--	-----------------------

31. List Attachments  
**C-102, C-104, Directional Survey, H spacing**

32. If a temporary pit was used at the well, attach a plat with the location of the temporary pit.

33. If an on-site burial was used at the well, report the exact location of the on-site burial:

Latitude \_\_\_\_\_ Longitude \_\_\_\_\_ NAD 1927 1983

*I hereby certify that the information shown on both sides of this form is true and complete to the best of my knowledge and belief*

Signature **Kay Maddox**    Name **Kay Maddox**    Title **Senior Regulatory Specialist**    Date **01/05/2022**  
 E-mail Address **kay\_maddox@eogresources.com**

# INSTRUCTIONS

This form is to be filed with the appropriate District Office of the Division not later than 20 days after the completion of any newly-drilled or deepened well and not later than 60 days after completion of closure. When submitted as a completion report, this shall be accompanied by one copy of all electrical and radio-activity logs run on the well and a summary of all special tests conducted, including drill stem tests. All depths reported shall be measured depths. In the case of directionally drilled wells, true vertical depths shall also be reported. For multiple completions, items 11, 12 and 26-31 shall be reported for each zone.

## INDICATE FORMATION TOPS IN CONFORMANCE WITH GEOGRAPHICAL SECTION OF STATE

Southeastern New Mexico		Northwestern New Mexico	
T. Anhy <u>Rustler 1083'</u>	T. Canyon <u>Brushy 6903'</u>	T. Ojo Alamo	T. Penn A"
T. Salt <u>1427'</u>	T. Strawn	T. Kirtland	T. Penn. "B"
B. Salt <u>4348'</u>	T. Atoka	T. Fruitland	T. Penn. "C"
T. Yates	T. Miss	T. Pictured Cliffs	T. Penn. "D"
T. 7 Rivers	T. Devonian	T. Cliff House	T. Leadville
T. Queen	T. Silurian	T. Menefee	T. Madison
T. Grayburg	T. Montoya	T. Point Lookout	T. Elbert
T. San Andres	T. Simpson	T. Mancos	T. McCracken
T. Glorieta	T. McKee	T. Gallup	T. Ignacio Otzte
T. Paddock	T. Ellenburger	Base Greenhorn	T. Granite
T. Blinebry	T. Gr. Wash	T. Dakota	
T. Tubb	T. Delaware Sand	T. Morrison	
T. Drinkard	T. Bone Springs	T. Todilto	
T. Abo	T. <u>1st BS Sand 9,548'</u>	T. Entrada	
T. Wolfcamp	T. <u>2nd BS Sand 10,163'</u>	T. Wingate	
T. Penn	T.	T. Chinle	
T. Cisco (Bough C)	T.	T. Permian	

### OIL OR GAS SANDS OR ZONES

No. 1, from.....to.....  
 No. 2, from.....to.....  
 No. 3, from.....to.....  
 No. 4, from.....to.....

### IMPORTANT WATER SANDS

Include data on rate of water inflow and elevation to which water rose in hole.

No. 1, from.....to.....feet.....  
 No. 2, from.....to.....feet.....  
 No. 3, from.....to.....feet.....

## LITHOLOGY RECORD (Attach additional sheet if necessary)

From	To	Thickness In Feet	Lithology	From	To	Thickness In Feet	Lithology



**District I**  
 1625 N. French Dr., Hobbs, NM 88240  
 Phone:(575) 393-6161 Fax:(575) 393-0720

**District II**  
 811 S. First St., Artesia, NM 88210  
 Phone:(575) 748-1283 Fax:(575) 748-9720

**District III**  
 1000 Rio Brazos Rd., Aztec, NM 87410  
 Phone:(505) 334-6178 Fax:(505) 334-6170

**District IV**  
 1220 S. St Francis Dr., Santa Fe, NM 87505  
 Phone:(505) 476-3470 Fax:(505) 476-3462

**State of New Mexico**  
**Energy, Minerals and Natural Resources**  
**Oil Conservation Division**  
**1220 S. St Francis Dr.**  
**Santa Fe, NM 87505**

ACKNOWLEDGMENTS

Action 70897

**ACKNOWLEDGMENTS**

Operator: EOG RESOURCES INC P.O. Box 2267 Midland, TX 79702	OGRID: 7377
	Action Number: 70897
	Action Type: [C-104] Completion Packet (C-104C)

**ACKNOWLEDGMENTS**

<input checked="" type="checkbox"/>	I hereby certify that the required Water Use Report has been, or will be, submitted for this wells completion.
<input checked="" type="checkbox"/>	I hereby certify that the required FracFocus disclosure has been, or will be, submitted for this wells completion.

**District I**  
 1625 N. French Dr., Hobbs, NM 88240  
 Phone:(575) 393-6161 Fax:(575) 393-0720

**District II**  
 811 S. First St., Artesia, NM 88210  
 Phone:(575) 748-1283 Fax:(575) 748-9720

**District III**  
 1000 Rio Brazos Rd., Aztec, NM 87410  
 Phone:(505) 334-6178 Fax:(505) 334-6170

**District IV**  
 1220 S. St Francis Dr., Santa Fe, NM 87505  
 Phone:(505) 476-3470 Fax:(505) 476-3462

**State of New Mexico**  
**Energy, Minerals and Natural Resources**  
**Oil Conservation Division**  
**1220 S. St Francis Dr.**  
**Santa Fe, NM 87505**

CONDITIONS

Action 70897

**CONDITIONS**

Operator: EOG RESOURCES INC P.O. Box 2267 Midland, TX 79702	OGRID: 7377
	Action Number: 70897
	Action Type: [C-104] Completion Packet (C-104C)

**CONDITIONS**

Created By	Condition	Condition Date
plmartinez	None	12/2/2022