

Submit a Copy To Appropriate District
Office
District I – (575) 393-6161
1625 N. French Dr., Hobbs, NM 88240
District II – (575) 748-1283
811 S. First St., Artesia, NM 88210
District III – (505) 334-6178
1000 Rio Brazos Rd., Aztec, NM 87410
District IV – (505) 476-3460
1220 S. St. Francis Dr., Santa Fe, NM
87505

State of New Mexico
Energy, Minerals and Natural Resources

Form C-103
Revised July 18, 2013

OIL CONSERVATION DIVISION
1220 South St. Francis Dr.
Santa Fe, NM 87505

WELL API NO. 30-025-28141
5. Indicate Type of Lease STATE <input checked="" type="checkbox"/> FEE <input type="checkbox"/>
6. State Oil & Gas Lease No.
7. Lease Name or Unit Agreement Name State MTS
8. Well Number #002
9. OGRID Number 310761
10. Pool name or Wildcat SWD, Wolfcamp (96135)

SUNDRY NOTICES AND REPORTS ON WELLS (DO NOT USE THIS FORM FOR PROPOSALS TO DRILL OR TO DEEPEN OR PLUG BACK TO A DIFFERENT RESERVOIR. USE "APPLICATION FOR PERMIT" (FORM C-101) FOR SUCH PROPOSALS.)	
1. Type of Well: Oil Well <input type="checkbox"/> Gas Well <input type="checkbox"/> Other <input type="checkbox"/> SWD	
2. Name of Operator OASIS WATER SOLUTIONS LLC	
3. Address of Operator P.O. BOX 36 MONUMENT, NM 88265	
4. Well Location Unit Letter <u>E</u> : <u>1980</u> feet from the <u>N</u> line and <u>510</u> feet from the <u>W</u> line Section <u>10</u> Township <u>19 S</u> Range <u>35 E</u> NMPM County <u>LEA</u>	
11. Elevation (Show whether DR, RKB, RT, GR, etc.)	

12. Check Appropriate Box to Indicate Nature of Notice, Report or Other Data

NOTICE OF INTENTION TO:		SUBSEQUENT REPORT OF:	
PERFORM REMEDIAL WORK <input type="checkbox"/>	PLUG AND ABANDON <input checked="" type="checkbox"/>	REMEDIAL WORK <input type="checkbox"/>	ALTERING CASING <input type="checkbox"/>
TEMPORARILY ABANDON <input type="checkbox"/>	CHANGE PLANS <input type="checkbox"/>	COMMENCE DRILLING OPNS. <input type="checkbox"/>	P AND A <input type="checkbox"/>
PULL OR ALTER CASING <input type="checkbox"/>	MULTIPLE COMPL <input type="checkbox"/>	CASING/CEMENT JOB <input type="checkbox"/>	
DOWNHOLE COMMINGLE <input type="checkbox"/>			
CLOSED-LOOP SYSTEM <input type="checkbox"/>			
OTHER: <input type="checkbox"/>		OTHER: <input type="checkbox"/>	

13. Describe proposed or completed operations. (Clearly state all pertinent details, and give pertinent dates, including estimated date of starting any proposed work). SEE RULE 19.15.7.14 NMAC. For Multiple Completions: Attach wellbore diagram of proposed completion or recompletion.

Please see attached procedure

Note changes to procedure

LPC Area Below ground marker send pics before backfilling hole

SEE ATTACHED CONDITIONS OF APPROVAL

Spud Date:

Rig Release Date:

I hereby certify that the information above is true and complete to the best of my knowledge and belief.

SIGNATURE [Signature] TITLE Agent DATE 11/30/2022

Type or print name John R Harrison E-mail address: Bison.Consulting16@gmail.com PHONE: 575-631-8909

For State Use Only

APPROVED BY: [Signature] TITLE Compliance Officer A DATE 12/2/22
Conditions of Approval (if any): 575-263-6633

OASIS WATER SOLUTIONS, LLC

STATE MTS #2 SWD - 30-025-28142

P&A Procedure

- Notify OCD prior to P&A
- Remove injection equipment, MIRU plugging unit
- RIH with tubing and CIBP. Set at 10500 (10' above top prefs at 10510). Cap with 25 sx Class C cement
- Pressure test casing to 500#, if pressure holds proceed with procedure, if not, find hole and repair as OCD approves.
Spot 25 sx Class H 9215 Top 1st BSS
- Circulate hole with salt gel mud
- Spot 100 ft Class C plug 50/50 from 7734 to 7634 at Bone Springs
- Determine free point of 5.5 casing, estimated at 6000 ft. Cut and pull.
- Spot 100 ft plug at stub of 5.5 (6050 to 5950), 50/50, WOC and tag.
- Circulate hole with salt gel mud again.
Spot 25 sx Class C 5148 San Andres Spot 25 sx Class C 4560 Queen Spot 25 sx Class C 4040 7 Rivers

P&S Spot 100 ft plug at 8 5/8 shoe from 3600 to 3500, WOC and tag.

- Spot 25 sx plug at base of salt 3400 to 3300
- Spot 25 sx plug at top of salt 1850 to 1750

P&S Spot 25 sx plug at 13 3/8 shoe from 350 to 250

- Spot ~~10~~^{XX} sx plug at surface. Cut off WH, erect 4x6 marker with legal information on it.
25 sx Class C 150' to surface
- RDMO, clean location
- File C-103 subsequent report of P&A

**CONDITIONS OF APPROVAL
FOR PLUGGING AND ABANDONMENT
OCD - Southern District**

The following is a guide or checklist in preparation of a plugging program, this is not all inclusive and care must be exercised in establishing special plugging programs in unique and unusual cases, Notify NMOCD District Office I (Hobbs) at (575)-263-6633 at least 24 hours before beginning work. After MIRU rig will remain on well until it is plugged to surface. OCD is to be notified before rig down.

Company representative will be on location during plugging procedures.

1. A notice of intent to plug and abandon a wellbore is required to be approved before plugging operations are conducted. A cement evaluation tool is required in order to ensure isolation of producing formations, protection of water and correlative rights. A cement bond log or other accepted cement evaluation tool is to be provided to the division for evaluation if one has not been previously run or if the well did not have cement circulated to surface during the original casing cementing job or subsequent cementing jobs. Insure all bradenheads have been exposed, identified and valves are operational prior to rig up.
2. Closed loop system is to be used for entire plugging operation. Upon completion, contents of steel pits are to be hauled to a permitted disposal location.
3. Trucking companies being used to haul oilfield waste fluids to a disposal - commercial or private- shall have an approved NMOCD C-133 permit. A copy of this permit shall be available in each truck used to haul waste products. It is the responsibility of the operator as well as the contractor, to verify that this permit is in place prior to performing work. Drivers shall be able to produce a copy upon request of an NMOCD Field inspector.
4. Filing a subsequent C-103 will serve as notification that the well has been plugged.
5. A final C-103 shall be filed (and a site inspection by NMOCD Inspector to determine if the location is satisfactorily cleaned, all equipment, electric poles and trash has been removed to Meet NMOCD standards) before bonding can be released.
6. If work has not begun within 1 Year of the approval of this procedure, an extension request must be file stating the reason the well has not been plugged.
7. Squeeze pressures are not to exceed 500 psi, unless approval is given by NMOCD.
8. Produced water will not be used during any part of the plugging operation.
9. Mud laden fluids must be placed between all cement plugs mixed at 25 sacks per 100 bbls of water.
10. All cement plugs will be a minimum of 100' in length or a minimum of 25 sacks of cement, whichever is greater. 50' of calculated cement excess required for inside casing plugs and 100% calculated cement excess required on outside casing plugs.
11. Class 'C' cement will be used above 7500 feet.
12. Class 'H' cement will be used below 7500 feet.
13. A cement plug is required to be set 50' above and 50' below, casing stubs, DV tools, attempted casing cut offs, cement tops outside casing, salt sections and anywhere the casing is perforated, these plugs require a 4 hour WOC and then will be tagged
14. All Casing Shoes Will Be Perforated 50' below shoe depth and Attempted to be Squeezed, cement needs to be 50' above and 50' Below Casing Shoe inside the Production Casing.
16. When setting the top out cement plug in production, intermediate and surface casing, wellbores should remain full at least 30 minutes after plugs are set
17. A CIBP is to be set within 100' of production perforations, capped with 100' of cement, WOC 4 hours and tag.
18. A CIBP with 35' of cement may be used in lieu of the 100' plug if set with a bailer. This plug will be placed within 100' of the top perforation, (WOC 4 hrs and tag).

19. No more than 3000' is allowed between cement plugs in cased hole and 2000' in open hole.
20. Some of the Formations to be isolated with cement plugs are: These plugs to be set to isolate formation tops
- A) Fusselman
 - B) Devonian
 - C) Morrow
 - D) Wolfcamp
 - E) Bone Springs
 - F) Delaware
 - G) Any salt sections
 - H) Abo
 - I) Glorieta
 - J) Yates.
 - K) Potash---(In the R-111-P Area (Potash Mine Area),
A solid cement plug must be set across the salt section. Fluid used to mix the cement shall be saturated with the salts that are common to the section penetrated and in suitable proportions, not more than 3% calcium chloride (by weight of cement) will be considered the desired mixture whenever possible, WOC 4 hours and tag, this plug will be 50' below the bottom and 50' above the top of the Formation.
21. If cement does not exist behind casing strings at recommended formation depths, the casing can be cut and pulled with plugs set at recommended depths. If casing is not pulled, perforations will be shot and cement squeezed behind casing, WOC and tagged. These plugs will be set 50' below formation bottom to 50' above formation top inside the casing.

DRY HOLE MARKER REQUIREMENTS

The operator shall mark the exact location of the plugged and abandoned well with a steel marker not less than four inches in diameter, 3' below ground level with a plate of at least ¼" welded to the top of the casing and the dry hole marker welded on the plate with the following information welded on the dry hole marker:

1. Operator name
2. Lease and Well Number
3. API Number
4. Unit letter
5. Quarter Section (feet from the North, South, East or West)
6. Section, Township and Range
7. Plugging Date
8. County

SPECIAL CASES -----AGRICULTURE OR PRARIE CHICKEN BREEDING AREAS

In these areas, a below ground marker is required with all pertinent information mentioned above on a plate, set 3' below ground level, a picture of the plate will be supplied to NMOCD for record, the exact location of the marker (longitude and latitude by GPS) will be provided to NMOCD (We typically require a current survey to verify the GPS)

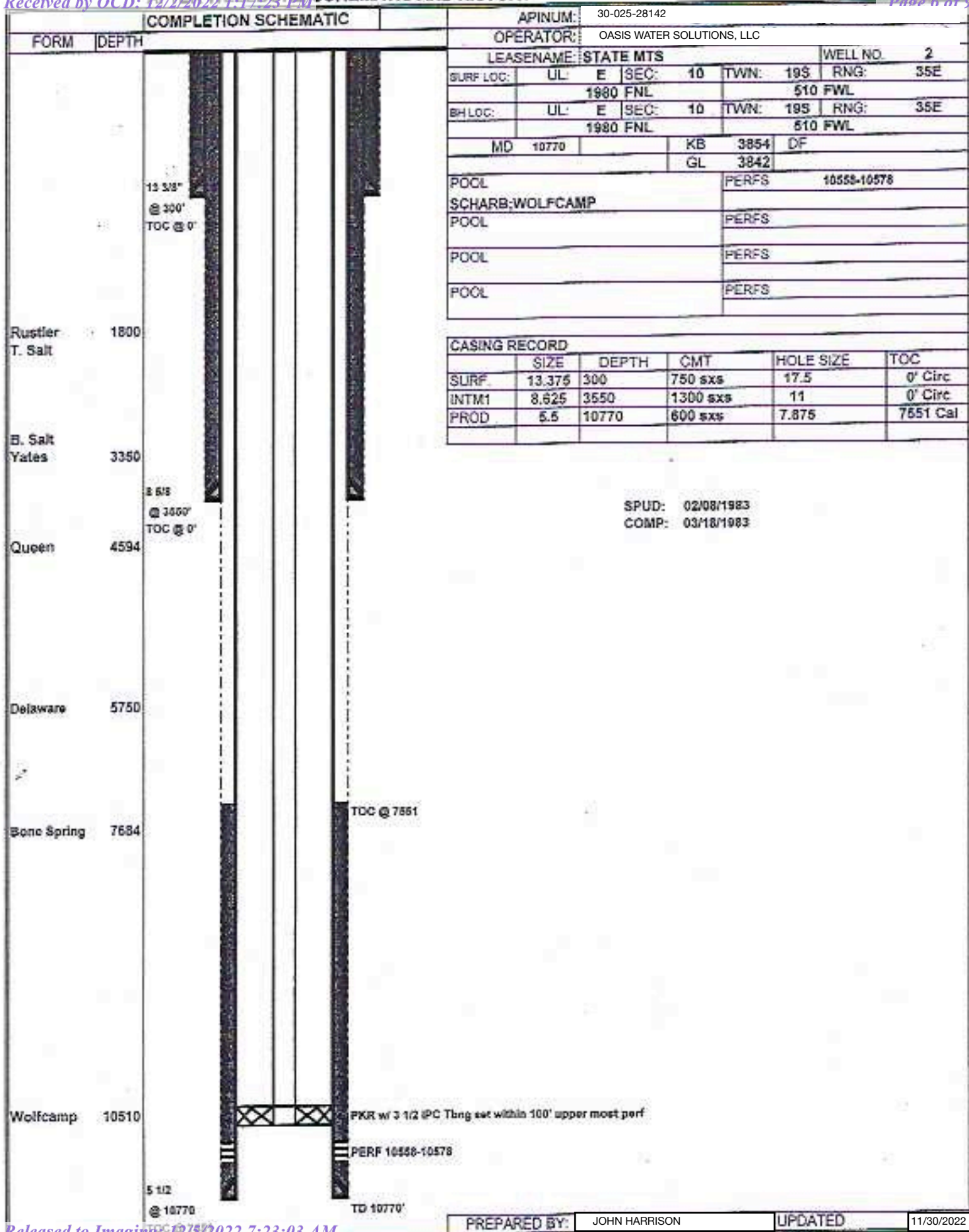
SITE REMEDIATION DUE WITHIN ONE YEAR OF WELL PLUGGING COMPLETION

OASIS WATER SOLUTIONS, LLC

STATE MTS #2 SWD - 30-025-28142

P&A Procedure

- Notify OCD prior to P&A
- Remove injection equipment, MIRU plugging unit
- RIH with tubing and CIBP. Set at 10500 (10' above top prefs at 10510). Cap with 25 sx Class C cement
- Pressure test casing to 500#, if pressure holds proceed with procedure, if not, find hole and repair as OCD approves.
- Circulate hole with salt gel mud
- Spot 100 ft Class C plug 50/50 from 7734 to 7634 at Bone Springs
- Determine free point of 5.5 casing, estimated at 6000 ft. Cut and pull.
- Spot 100 ft plug at stub of 5.5 (6050 to 5950), 50/50, WOC and tag.
- Circulate hole with salt gel mud again.
- Spot 100 ft plug at 8 5/8 shoe from 3600 to 3500, WOC and tag.
- Spot 25 sx plug at base of salt 3400 to 3300
- Spot 25 sx plug at top of salt 1850 to 1750
- Spot 25 sx plug at 13 3/8 shoe from 350 to 250
- Spot 10 sx plug at surface. Cut off WH, erect 4x6 marker with legal information on it.
- RDMO, clean location
- File C-103 subsequent report of P&A



PREPARED BY: JOHN HARRISON
 UPDATED: 11/30/2022

Released to Imaging: 12/5/2022 7:23:03 AM

COMPLETION SCHEMATIC		APINUM: 30-025-28142			
FORM	DEPTH	OPERATOR: OASIS WATER SOLUTIONS, LLC			
		LEASENAME: STATE MTS WELL NO. 2			
		SURF LOC: UL: E SEC: 10 TWN: 19S RNG: 35E			
		1980 FNL 510 FWL			
		BH LOC: UL: E SEC: 10 TWN: 19S RNG: 35E			
		1980 FNL 510 FWL			
		MD 10770 KB 3854 DF			
		GL 3842			
		POOL PERFS 10558-10578			
		SCHARB:WOLFCAMP			
		POOL PERFS			
		POOL PERFS			
		POOL PERFS			
		POOL PERFS			
CASING RECORD					
	SIZE	DEPTH	CMT	HOLE SIZE	TOC
SURF	13.375	300	750 sxs	17.5	0' Circ
INTM1	8.625	3550	1300 sxs	11	0' Circ
PROD	5.5	10770	600 sxs	7.875	7551 Cal
<p>SPUD: 02/08/1983</p> <p>COMP: 03/18/1983</p>					
Rustler T. Salt	1800				
B. Salt Yates	3350				
Queen	4594				
Delaware	5750	FREE POINT 5.5 CSG (EST 6000') 50/50 PLUG FROM 6050 TO 5950			
Bone Spring	7684	TDC @ 7551			
Wolfcamp	10510	TDC @ 10770			
		PERF 10558-10578			
		TD 10770'			

District I
1625 N. French Dr., Hobbs, NM 88240
Phone:(575) 393-6161 Fax:(575) 393-0720
District II
811 S. First St., Artesia, NM 88210
Phone:(575) 748-1283 Fax:(575) 748-9720
District III
1000 Rio Brazos Rd., Aztec, NM 87410
Phone:(505) 334-6178 Fax:(505) 334-6170
District IV
1220 S. St Francis Dr., Santa Fe, NM 87505
Phone:(505) 476-3470 Fax:(505) 476-3462

State of New Mexico
Energy, Minerals and Natural Resources
Oil Conservation Division
1220 S. St Francis Dr.
Santa Fe, NM 87505

COMMENTS

Action 163399

COMMENTS

Operator: OASIS WATER SOLUTIONS LLC P.O. Box 36 Monument, NM 88265	OGRID: 310761
	Action Number: 163399
	Action Type: [C-103] NOI Plug & Abandon (C-103F)

COMMENTS

Created By	Comment	Comment Date
plmartinez	DATA ENTRY PM	12/5/2022

District I
1625 N. French Dr., Hobbs, NM 88240
Phone:(575) 393-6161 Fax:(575) 393-0720
District II
811 S. First St., Artesia, NM 88210
Phone:(575) 748-1283 Fax:(575) 748-9720
District III
1000 Rio Brazos Rd., Aztec, NM 87410
Phone:(505) 334-6178 Fax:(505) 334-6170
District IV
1220 S. St Francis Dr., Santa Fe, NM 87505
Phone:(505) 476-3470 Fax:(505) 476-3462

State of New Mexico
Energy, Minerals and Natural Resources
Oil Conservation Division
1220 S. St Francis Dr.
Santa Fe, NM 87505

CONDITIONS

Action 163399

CONDITIONS

Operator: OASIS WATER SOLUTIONS LLC P.O. Box 36 Monument, NM 88265	OGRID: 310761
	Action Number: 163399
	Action Type: [C-103] NOI Plug & Abandon (C-103F)

CONDITIONS

Created By	Condition	Condition Date
kfortner	See attached COA Note changes to procedure	12/2/2022