

Form 3160-3
(June 2015)FORM APPROVED
OMB No. 1004-0137
Expires: January 31, 2018

UNITED STATES
DEPARTMENT OF THE INTERIOR
BUREAU OF LAND MANAGEMENT
APPLICATION FOR PERMIT TO DRILL OR REENTER

1a. Type of work: <input checked="" type="checkbox"/> DRILL <input type="checkbox"/> REENTER 1b. Type of Well: <input checked="" type="checkbox"/> Oil Well <input type="checkbox"/> Gas Well <input type="checkbox"/> Other 1c. Type of Completion: <input type="checkbox"/> Hydraulic Fracturing <input checked="" type="checkbox"/> Single Zone <input type="checkbox"/> Multiple Zone		5. Lease Serial No. NMNM061349 6. If Indian, Allottee or Tribe Name 7. If Unit or CA Agreement, Name and No. 8. Lease Name and Well No. RANA SALADA FED COM 0605 123H
2. Name of Operator NOVO OIL AND GAS NORTHERN DELAWARE LLC		9. API Well No. 30-015-53177
3a. Address 1001 West Wilshire Boulevard Suite 206, Oklahoma City, OK	3b. Phone No. (include area code) (405) 404-0414	10. Field and Pool, or Exploratory CULEBRA BLUFF SOUTH/Bone Spring
4. Location of Well (Report location clearly and in accordance with any State requirements. *) At surface NESE / 1942 FSL / 210 FEL / LAT 32.3328307 / LONG -104.0326642 At proposed prod. zone SWSE / 1254 FSL / 2540 FEL / LAT 32.3304868 / LONG -104.0066902		11. Sec., T. R. M. or Blk. and Survey or Area SEC 1/T23S/R28E/NMP
14. Distance in miles and direction from nearest town or post office* 5 miles		12. County or Parish EDDY
15. Distance from proposed* location to nearest property or lease line, ft. (Also to nearest drig. unit line, if any) 210 feet	16. No of acres in lease 	17. Spacing Unit dedicated to this well 237.0
18. Distance from proposed location* to nearest well, drilling, completed, applied for, on this lease, ft. 20 feet	19. Proposed Depth 8690 feet / 16415 feet	20. BLM/BIA Bond No. in file FED:
21. Elevations (Show whether DF, KDB, RT, GL, etc.) 3055 feet	22. Approximate date work will start* 11/01/2019	23. Estimated duration 90 days
24. Attachments		

The following, completed in accordance with the requirements of Onshore Oil and Gas Order No. 1, and the Hydraulic Fracturing rule per 43 CFR 3162.3-3 (as applicable)

- | | |
|---------------------------------------------------------------------------------------------------------------------------------------------------------------------------------------------------------------------------|-----------------------------------------------------------------------------------------------------------------------------------------------------------------------------------------------------------------------|
| 1. Well plat certified by a registered surveyor.
2. A Drilling Plan.
3. A Surface Use Plan (if the location is on National Forest System Lands, the SUPO must be filed with the appropriate Forest Service Office). | 4. Bond to cover the operations unless covered by an existing bond on file (see Item 20 above).
5. Operator certification.
6. Such other site specific information and/or plans as may be requested by the BLM. |
|---------------------------------------------------------------------------------------------------------------------------------------------------------------------------------------------------------------------------|-----------------------------------------------------------------------------------------------------------------------------------------------------------------------------------------------------------------------|

25. Signature (Electronic Submission)	Name (Printed/Typed) BRIAN WOOD / Ph: (405) 404-0414	Date 08/13/2019
Title President		
Approved by (Signature) (Electronic Submission)	Name (Printed/Typed) CODY LAYTON / Ph: (575) 234-5959	Date 12/05/2022
Title Assistant Field Manager Lands & Minerals		
Office Carlsbad Field Office		

Application approval does not warrant or certify that the applicant holds legal or equitable title to those rights in the subject lease which would entitle the applicant to conduct operations thereon.
 Conditions of approval, if any, are attached.

Title 18 U.S.C. Section 1001 and Title 43 U.S.C. Section 1212, make it a crime for any person knowingly and willfully to make to any department or agency of the United States any false, fictitious or fraudulent statements or representations as to any matter within its jurisdiction.

(Continued on page 2)

*(Instructions on page 2)



Approval Date: 12/05/2022

District I

1625 N. French Dr., Hobbs, NM 88240
Phone: (575) 393-6161 Fax: (575) 393-0720

District II

811 S. First St., Artesia, NM 88210
Phone: (575) 748-1283 Fax: (575) 748-9720

District III

1000 Rio Brazos Road, Aztec, NM 87410
Phone: (505) 334-6178 Fax: (505) 334-6170

District IV

1220 S. St. Francis Dr., Santa Fe, NM 87505
Phone: (505) 476-3460 Fax: (505) 476-3462

State of New Mexico

Energy, Minerals & Natural Resources Department

OIL CONSERVATION DIVISION

1220 South St. Francis Dr.

Santa Fe, NM 87505

Form C-102

Revised August 1, 2011

Submit one copy to appropriate

District Office

☐ AMENDED REPORT

WELL LOCATION AND ACREAGE DEDICATION PLAT

¹ API Number 30-015- 53177	² Pool Code 15011	³ Pool Name CULEBRA BLUFF; BONE SPRING, SOUTH
⁴ Property Code 325746	⁵ Property Name RANA SALADA FED COM 0605	
⁷ OGRID No. 372920	⁸ Operator Name NOVO OIL & GAS NORTHERN DELAWARE, LLC	⁶ Well Number 123H
		⁹ Elevation 3055.0

¹⁰ Surface Location

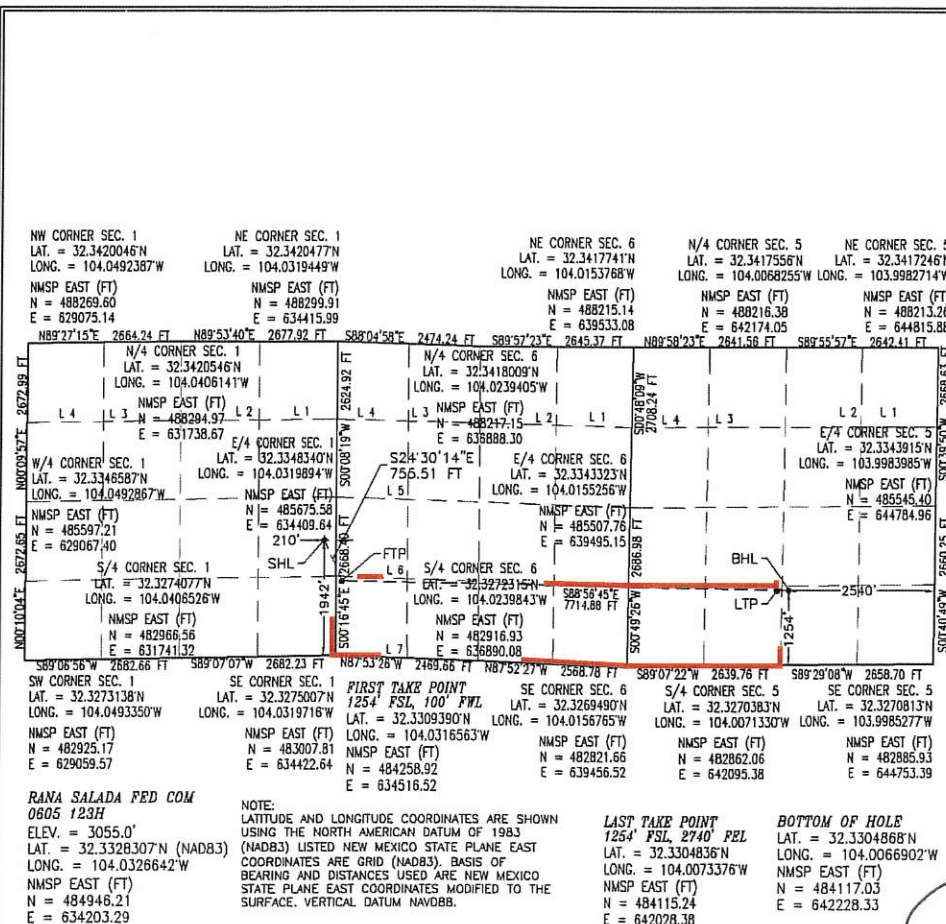
UL or lot no.	Section	Township	Range	Lot Idn	Feet from the	North/South line	Feet from the	East/West line	County
I	1	23 S	28 E		1942	SOUTH	210	EAST	EDDY

¹¹ Bottom Hole Location If Different From Surface

UL or lot no.	Section	Township	Range	Lot Idn	Feet from the	North/South line	Feet from the	East/West line	County
O	5	23 S	29 E		1254	SOUTH	2540	EAST	EDDY

¹² Dedicated Acres 236.82	¹³ Joint or Infill	¹⁴ Consolidation Code C	¹⁵ Order No.
------------------------------------------------	-------------------------------	----------------------------------------------	-------------------------

No allowable will be assigned to this completion until all interests have been consolidated or a non-standard unit has been approved by the division.

¹⁷ OPERATOR CERTIFICATION

I hereby certify that the information contained herein is true and complete to the best of my knowledge and belief, and that this organization either owns a working interest or unleased mineral interest in the land including the proposed bottom hole location or has a right to drill this well at this location pursuant to a contract with an owner of such a mineral or working interest, or to a voluntary pooling agreement or a compulsory pooling order heretofore entered by the division.

Brian Wood 8-4-19
Signature Date

BRIAN WOOD

Printed Name
brian@permitswest.com

E-mail Address
(505) 466-8120

¹⁸ SURVEYOR CERTIFICATION

I hereby certify that the well location shown on this plat was plotted from field notes of actual surveys made by me or under my supervision, and that the same is true and correct to the best of my belief.

MAY 15, 2019

Date of Survey

Filimon F. Jaramillo
Signature and Seal of Professional Surveyor

Certificate Number: FILIMON F. JARAMILLO, PLS 12797

SURVEY NO. 6149A

Intent ☒ YES As Drilled ☐

API #

Operator Name:	Property Name:	Well Number
NOVO OIL & GAS NORTHERN DELAWARE, LLC	RANA SALADA FED COM 0605	123H

Kick Off Point (KOP)

UL I	Section 1	Township 23S	Range 28E	Lot	Feet 1942	From N/S SOUTH	Feet 210	From E/W EAST	County EDDY
Latitude 32.3328307					Longitude 104.0326642			NAD 83	

First Take Point (FTP)

UL 6	Section 6	Township 23S	Range 29E	Lot 7	Feet 1254	From N/S SOUTH	Feet 100	From E/W WEST	County EDDY
Latitude 32.3309390					Longitude 104.0316563			NAD 83	

Last Take Point (LTP)

UL N	Section 5	Township 23S	Range 29E	Lot	Feet 1254	From N/S SOUTH	Feet 2740	From E/W EAST	County EDDY
Latitude 32.3304836					Longitude 104.0073376			NAD 83	

Is this well the defining well for the Horizontal Spacing Unit? ☒ YESIs this well an infill well? ☐ NO

If infill is yes please provide API if available, Operator Name and well number for Defining well for Horizontal Spacing Unit.

API #

Operator Name:	Property Name:	Well Number

KZ 06/29/2018

State of New Mexico
Energy, Minerals and Natural Resources Department

Submit Electronically
Via E-permitting

Oil Conservation Division
1220 South St. Francis Dr.
Santa Fe, NM 87505

NATURAL GAS MANAGEMENT PLAN

This Natural Gas Management Plan must be submitted with each Application for Permit to Drill (APD) for a new or recompleted well.

Section 1 – Plan Description

Effective May 25, 2021

I. Operator: _Novo Oil & Gas Northern Delaware, LLC_____ **OGRID:** __372920_____ **Date:** __12__/_14__/_22_____

II. Type: ☒ Original ☐ Amendment due to ☐ 19.15.27.9.D(6)(a) NMAC ☐ 19.15.27.9.D(6)(b) NMAC ☐ Other.

If Other, please describe: _____

III. Well(s): Provide the following information for each new or recompleted well or set of wells proposed to be drilled or proposed to be recompleted from a single well pad or connected to a central delivery point.

Well Name	API	ULSTR	Footages	Anticipated Oil BBL/D	Anticipated Gas MCF/D	Anticipated Produced Water BBL/D
Rana Salada Fed Com 0605 123H		I-1-23S-28E	1,942 FSL & 210 FEL	700	5200	2300

IV. Central Delivery Point Name: _CTB Name: Rana Salada Pad A CTB 1_____ [See 19.15.27.9(D)(1) NMAC]

V. Anticipated Schedule: Provide the following information for each new or recompleted well or set of wells proposed to be drilled or proposed to be recompleted from a single well pad or connected to a central delivery point.

Well Name	API	Spud Date	TD Reached Date	Completion Commencement Date	Initial Flow Back Date	First Production Date
Rana Salada Fed Com 0605 123H		6/20/2023	7/22/2023	8/5/23	08/20/2023	08/1/2023

VI. Separation Equipment: ☒ Attach a complete description of how Operator will size separation equipment to optimize gas capture.

VII. Operational Practices: ☒ Attach a complete description of the actions Operator will take to comply with the requirements of Subsection A through F of 19.15.27.8 NMAC.

VIII. Best Management Practices: ☒ Attach a complete description of Operator's best management practices to minimize venting during active and planned maintenance.

Section 2 – Enhanced Plan**EFFECTIVE APRIL 1, 2022**

Beginning April 1, 2022, an operator that is not in compliance with its statewide natural gas capture requirement for the applicable reporting area must complete this section.

☒ Operator certifies that it is not required to complete this section because Operator is in compliance with its statewide natural gas capture requirement for the applicable reporting area.

IX. Anticipated Natural Gas Production:

Well	API	Anticipated Average Natural Gas Rate MCF/D	Anticipated Volume of Natural Gas for the First Year MCF

X. Natural Gas Gathering System (NGGS):

Operator	System	ULSTR of Tie-in	Anticipated Gathering Start Date	Available Maximum Daily Capacity of System Segment Tie-in

XI. Map. ☐ Attach an accurate and legible map depicting the location of the well(s), the anticipated pipeline route(s) connecting the production operations to the existing or planned interconnect of the natural gas gathering system(s), and the maximum daily capacity of the segment or portion of the natural gas gathering system(s) to which the well(s) will be connected.

XII. Line Capacity. The natural gas gathering system ☐ will ☐ will not have capacity to gather 100% of the anticipated natural gas production volume from the well prior to the date of first production.

XIII. Line Pressure. Operator ☐ does ☐ does not anticipate that its existing well(s) connected to the same segment, or portion, of the natural gas gathering system(s) described above will continue to meet anticipated increases in line pressure caused by the new well(s).

☐ Attach Operator's plan to manage production in response to the increased line pressure.

XIV. Confidentiality: ☐ Operator asserts confidentiality pursuant to Section 71-2-8 NMSA 1978 for the information provided in Section 2 as provided in Paragraph (2) of Subsection D of 19.15.27.9 NMAC, and attaches a full description of the specific information for which confidentiality is asserted and the basis for such assertion.

Section 3 - Certifications

Effective May 25, 2021

Operator certifies that, after reasonable inquiry and based on the available information at the time of submittal:

☒ Operator will be able to connect the well(s) to a natural gas gathering system in the general area with sufficient capacity to transport one hundred percent of the anticipated volume of natural gas produced from the well(s) commencing on the date of first production, taking into account the current and anticipated volumes of produced natural gas from other wells connected to the pipeline gathering system; or

☐ Operator will not be able to connect to a natural gas gathering system in the general area with sufficient capacity to transport one hundred percent of the anticipated volume of natural gas produced from the well(s) commencing on the date of first production, taking into account the current and anticipated volumes of produced natural gas from other wells connected to the pipeline gathering system.

If Operator checks this box, Operator will select one of the following:

Well Shut-In. ☐ Operator will shut-in and not produce the well until it submits the certification required by Paragraph (4) of Subsection D of 19.15.27.9 NMAC; or

Venting and Flaring Plan. ☒ Operator has attached a venting and flaring plan that evaluates and selects one or more of the potential alternative beneficial uses for the natural gas until a natural gas gathering system is available, including:

- (a) power generation on lease;
- (b) power generation for grid;
- (c) compression on lease;
- (d) liquids removal on lease;
- (e) reinjection for underground storage;
- (f) reinjection for temporary storage;
- (g) reinjection for enhanced oil recovery;
- (h) fuel cell production; and
- (i) other alternative beneficial uses approved by the division.

Section 4 - Notices


1. If, at any time after Operator submits this Natural Gas Management Plan and before the well is spud:

(a) Operator becomes aware that the natural gas gathering system it planned to connect the well(s) to has become unavailable or will not have capacity to transport one hundred percent of the production from the well(s), no later than 20 days after becoming aware of such information, Operator shall submit for OCD's approval a new or revised venting and flaring plan containing the information specified in Paragraph (5) of Subsection D of 19.15.27.9 NMAC; or

(b) Operator becomes aware that it has, cumulatively for the year, become out of compliance with its baseline natural gas capture rate or natural gas capture requirement, no later than 20 days after becoming aware of such information, Operator shall submit for OCD's approval a new or revised Natural Gas Management Plan for each well it plans to spud during the next 90 days containing the information specified in Paragraph (2) of Subsection D of 19.15.27.9 NMAC, and shall file an update for each Natural Gas Management Plan until Operator is back in compliance with its baseline natural gas capture rate or natural gas capture requirement.

2. OCD may deny or conditionally approve an APD if Operator does not make a certification, fails to submit an adequate venting and flaring plan which includes alternative beneficial uses for the anticipated volume of natural gas produced, or if OCD determines that Operator will not have adequate natural gas takeaway capacity at the time a well will be spud.

I certify that, after reasonable inquiry, the statements in and attached to this Natural Gas Management Plan are true and correct to the best of my knowledge and acknowledge that a false statement may be subject to civil and criminal penalties under the Oil and Gas Act.

Signature:	
Printed Name:	Jusha Carter
Title:	Landman
E-mail Address:	jcarter@novus.com
Date:	12/14/22
Phone:	405.247.3375

OIL CONSERVATION DIVISION (Only applicable when submitted as a standalone form)	
Approved By:	
Title:	
Approval Date:	
Conditions of Approval:	

APPENDIX A



Separation Equipment

Novo Oil & Gas Northern Delaware, LLC (Novo) has pulled representative pressurized samples from wells in the same producing formation. Novo has utilized these samples in process simulations to determine the amount of gas anticipated in each stage of the process and utilized this information with a safety factor to size the equipment listed below:

- Separation equipment will be set as follows:
 - Individual 3 Phase separators will be set for each individual well.
 - The separators will be sized based on the anticipated volume of the well and the pressure of the lines utilized for oil, gas, and water takeaway.
 - Individual Heater treaters will be set for each individual well.
 - The heater treaters are sized based on the anticipated combined volume of oil and water predicted to come from the initial 3 phase separator.
 - Oil will be separated from the water and water will be sent to its respective tanks
 - The combined oil and natural gas stream is routed to the Vapor Recovery Tower.
 - The oil and water tanks utilize a closed vent capture system to ensure all breathing, working and flashing losses are routed to the Vapor Recovery Tower (VRT) and Vapor Recovery Unit (VRU)
 - The Vapor Recovery Tower has been sized, based on the anticipated volume of gas from the heater treater and oil and water tanks. A VRU is then utilized to push the recovered gas into the sales pipeline.
 - The VRU will be sized based on the anticipated gas volume and the gas pressure for the line utilized for takeaway.

All equipment has been sized based on the modeled projected need and a safety factor of at least 10%. This is ensuring that the capture of methane gas and VOC will minimize flaring below 50mcf/d per facility.



Operational Practices

19.15.27.8 (A) Venting and Flaring of Natural Gas

Novo Oil & Gas Northern Delaware, LLC (Novo) understands the requirements of NMAC 19.15.27.8 which states that the venting and flaring of natural gas during drilling, completion or production that constitutes waste as defined in 19.15.2 are prohibited.

19.15.27.8 (B) Venting and flaring during drilling operations

1. Novo shall capture or combust natural gas if technically feasible during drilling operations using best industry practices.
2. A flare stack with a 100 percent capacity for expected volumes will be set on location of the CTB at least 100 feet from the nearest surface hole location, well heads, and storage tanks.
3. In the event of an emergency, Novo will vent natural gas in order to avoid substantial impact. Novo shall report the vented or flared gas to the NMOCD.

19.15.27.8 (C) Venting and flaring during completion or recompletion

During completion operations, Novo utilizes the following:

1. Novo facilities are built and ready from day 1 of flowback
2. Individual well test separators will be set to properly separate gas and liquids. Temporary test separator will be utilized initially to process volumes. In addition, separators will be tied into flowback tanks which will be tied into the gas processing equipment for sales down a pipeline. See **Appendix A** for details on Separation Equipment used by Novo.
3. Should the facility not yet be capable of processing gas, or the gas does not meet quality standards, then storage tanks will be set that are tied into gas busters or a temporary flare to manage all natural gas. This flare would meet the following requirements:
 - a) An appropriately sized flare stack with an automatic igniter
 - b) Novo analyzes the natural gas samples twice per week

- c) Novo routes the natural gas into a gathering pipeline as soon as the pipeline specifications are met
- d) Novo provides the NMOCD with pipeline specifications and natural gas data.

19.15.27.8 (D) Venting and flaring during production operations.

Novo will not vent or flare natural gas except under the following circumstances:

1. During an emergency or malfunction
2. To unload or clean-up liquid holdup in a well to atmospheric pressure, provided
 - a) Novo does not vent after the well achieves a stabilized rate and pressure
 - b) Novo will remain present on-site during liquids unloaded by manual purging and takes all reasonable actions to achieve a stabilized rate and pressure at the earliest practical time
 - c) Novo will optimize the system to minimize natural gas venting on any well equipped with a plunger lift or auto control system
 - d) Best management practices will be used during downhole well maintenance.
3. During the first year of production from an exploratory well provided
 - a) Novo receives approval from the NMOCD
 - b) Novo remains in compliance with NM gas capture requirements
 - c) Novo submits an updated C-129 from to the NMOCD.
4. During the following activities unless prohibited
 - a) Gauging or sampling a storage tank or low-pressure production vessel
 - b) Loading out liquids from a storage tank
 - c) Repair and maintenance
 - d) Normal operation of a gas-activated pneumatic controller or pump
 - e) Normal operation of a storage tank but not including venting from a thief hatch
 - f) Normal operation of dehydration units
 - g) Normal operations of compressors, compressor engines, turbines, valves, flanges, and connectors
 - h) During a bradenhead, packer leakage test, or production test lasting less than 24 hours
 - i) When natural gas does not meet the gathering pipeline specifications
 - j) Commissioning of pipelines, equipment, or facilities only for as long as necessary to purge introduced impurities.

In order to comply with these laws, see **Appendix B** for details on Novo Venting and Flaring.

19.15.27.8 (E) Performance standards

1. Novo has utilized process simulations with a safety factor to design all separation and storage equipment. The equipment is routed to a vapor recovery system and utilizes as a flare as back up for periods of startup, shutdown, maintenance or malfunction of the VRU system.
2. Novo will install a flare that designed to handle the full volume of vapors from the facility in case of VRU failure and it is designed with an auto-ignition system.
3. Flare stacks will be appropriately sized and designed to ensure proper combustion efficiency
 - a) Flare stacks installed or replaced will be equipped with an automatic ignitor or continuous pilot
 - b) Previously installed flare stacks will be retrofitted with an automatic ignitor, continuous pilot , or technology that alerts Novo of flare malfunction within 18 months after May 25, 2021.
 - c) Flare stacks replaced after May 25, 2021 will be equipped with an automatic ignitor or continuous pilot if located at a well or facility with an average daily production of 60,000 cubic feet of natural gas or less.
 - d) Flare stacks will be located at least 100 feet from well and storage tanks and securely anchored
4. Novo will conduct an AVO inspection on all components for leaks and defects at least weekly.
5. Novo will make and keep records of AVO inspections available to the NMOCD for at least 5 years.
6. Novo may use a remote or automated monitoring technology to detect leaks and releases in lieu of AVO inspections with prior NMOCD approval.
7. Facilities will be designed to minimize waste.
8. Novo will resolve emergencies as promptly as possible.

19.15.27.8 (F) Measurement or estimation of vented and flared natural gas

1. Novo will have meters on both the low pressure and high pressure sides of the flares and the volumes are recorded in the SCADA system.
2. Novo will install equipment to measure the volume of flared natural gas that has an average daily production of 60,000 cubic feet or greater of natural gas.
3. Novo's measuring equipment will conform to an industry standards.
4. The measurement system is designed such that it cannot be bypassed except for inspections and servicing the meters.
5. Novo will estimate the volume of vented or flared natural gas using a methodology that can be independently verified if metering is not practicable due to low flow rate or pressure.

6. Novo will estimate the volume of vented and flared natural gas based on the results of an annual GOR test for wells that do not require measuring equipment reported on form C-116.
7. Novo will install measuring equipment whenever the NMOCD determines that metering is necessary.

APPENDIX A



Separation Equipment

Novo Oil & Gas Northern Delaware, LLC (Novo) has pulled representative pressurized samples from wells in the same producing formation. Novo has utilized these samples in process simulations to determine the amount of gas anticipated in each stage of the process and utilized this information with a safety factor to size the equipment listed below:

- Separation equipment will be set as follows:
 - Individual 3 Phase separators will be set for each individual well.
 - The separators will be sized based on the anticipated volume of the well and the pressure of the lines utilized for oil, gas, and water takeaway.
 - Individual Heater treaters will be set for each individual well.
 - The heater treaters are sized based on the anticipated combined volume of oil and water predicted to come from the initial 3 phase separator.
 - Oil will be separated from the water and water will be sent to its respective tanks
 - The combined oil and natural gas stream is routed to the Vapor Recovery Tower.
 - The oil and water tanks utilize a closed vent capture system to ensure all breathing, working and flashing losses are routed to the Vapor Recovery Tower (VRT) and Vapor Recovery Unit (VRU)
 - The Vapor Recovery Tower has been sized, based on the anticipated volume of gas from the heater treater and oil and water tanks. A VRU is then utilized to push the recovered gas into the sales pipeline.
 - The VRU will be sized based on the anticipated gas volume and the gas pressure for the line utilized for takeaway.

All equipment has been sized based on the modeled projected need and a safety factor of at least 10%. This is ensuring that the capture of methane gas and VOC will minimize flaring below 50mcf/d per facility.

APPENDIX B



Venting and Flaring

Novo Oil & Gas Northern Delaware, LLC (Novo) has a natural gas system available prior to startup of completion operations. Novo utilizes a VRU system and sells all gas except during periods of startup, shutdown, maintenance, or malfunction for the gas capturing equipment, including the VRT, VRU, storage tanks, and pipelines.

Currently, Novo utilizes the following from list A-I of Section 3 for its operations to minimize flaring:

- a) Novo Oil & Gas utilizes Natural Gas (NG) powered generators to power it's leases where grid power isn't available.
- b) When electrical grid power is unavailable, NG generators will be used for major equipment onsite.
- c) Novo Oil & Gas compression in service will be NG powered.
- d) Should liquids removal – such as dehydration – be required, units will be powered by NG.

Additionally, Novo Oil & Gas will only flare gas during the following times:

- Scheduled maintenance for gas capturing equipment including:
 - VRT
 - VRU
 - Storage tanks
 - Pipelines
- Emergency flaring



Best Management Practices

Novo Oil & Gas Northern Delaware, LLC (Novo) utilizes the following best management practices to minimize venting during active and planned maintenance.

Novo has a closed vent capture system to route emissions from the heater treater, tanks and vapor recovery to the VRU with a flare for backup. The system is designed such that if the VRU is taken out of service for any reason, the vapors will be routed to the flare for combustion.

Novo will isolate and attempt to route all vapors to the VRU or flare prior to opening any lines for maintenance to minimize venting from the equipment. Not limited to:



U.S. Department of the Interior
BUREAU OF LAND MANAGEMENT

Drilling Plan Data Report

12/05/2022

APD ID: 10400045765

Submission Date: 08/13/2019

Highlighted data
reflects the most
recent changes

Operator Name: NOVO OIL AND GAS NORTHERN DELAWARE LLC

Well Name: RANA SALADA FED COM 0605

Well Number: 123H

Well Type: OIL WELL

Well Work Type: Drill

[Show Final Text](#)

Section 1 - Geologic Formations

Formation ID	Formation Name	Elevation	True Vertical	Measured Depth	Lithologies	Mineral Resources	Producing Formatio
513344	QUATERNARY	3055	0	0	OTHER : None	USEABLE WATER	N
513345	RUSTLER	2765	290	290	ANHYDRITE	NONE	N
513346	BASE OF SALT	230	2825	2835	SALT	NONE	N
513347	BELL CANYON	230	2825	2835	SANDSTONE	NATURAL GAS, OIL	N
513348	CHERRY CANYON	-765	3820	3852	SANDSTONE	NATURAL GAS, OIL	N
513349	BRUSHY CANYON	-2200	5255	5319	SANDSTONE	NATURAL GAS, OIL	N
513350	BONE SPRING	-3300	6355	6418	LIMESTONE	NATURAL GAS, OIL	N
513351	BONE SPRING 1ST	-4385	7440	7523	SANDSTONE	NATURAL GAS, OIL	N
513352	BONE SPRING 2ND	-4650	7705	7788	OTHER : Carbonate	NATURAL GAS, OIL	N
513353	BONE SPRING 2ND	-5060	8115	8201	SANDSTONE	NATURAL GAS, OIL	N
513354	BONE SPRING 3RD	-5490	8545	12015	OTHER : Carbonate	NATURAL GAS, OIL	Y

Section 2 - Blowout Prevention

Pressure Rating (PSI): 5M

Rating Depth: 12000

Equipment: A 13.625 5,000-psi BOP system will be installed on a multi-bowl (speed head) wellhead with a 13.625 flanged casing spool. Top flange of casing spool will be set in a cellar below ground level. BOP system will consist of a single pipe ram on the bottom, mud cross, double pipe ram with blind rams on bottom and pipe rams on top, and annular preventer. Blowout preventer will be installed on top of the 13.375 surface casing and will remain installed to TD of the well.

Requesting Variance? YES

Variance request: Variance is requested to use a co-flex hose between the BOP system and choke manifold. A typical co-flex pressure test certificate is attached. An equipment specific co-flex pressure test certificate will be on site when testing the BOP.

Operator Name: NOVO OIL AND GAS NORTHERN DELAWARE LLC**Well Name:** RANA SALADA FED COM 0605**Well Number:** 123H

Testing Procedure: BOP system will be isolated with a test plug and tested by an independent tester to 250-psi low and 5000-psi high for 10 minutes before drilling out the surface shoe. All casing strings will be tested in accordance with Onshore Order 2 III.B.1.h.

Choke Diagram Attachment:

RS_0605_123H_Choke_20200219085818.pdf

BOP Diagram Attachment:

RS_0605_123H_BOP_20200219085829.pdf

Section 3 - Casing

Casing ID	String Type	Hole Size	Csg Size	Condition	Standard	Tapered String	Top Set MD	Bottom Set MD	Top Set TVD	Bottom Set TVD	Top Set MSL	Bottom Set MSL	Calculated casing length MD	Grade	Weight	Joint Type	Collapse SF	Burst SF	Joint SF Type	Joint SF	Body SF Type	Body SF
1	SURFACE	17.5	13.375	NEW	API	N	0	365	0	365	3055	2690	365	J-55	54.5	BUTT	1.125	1.125	DRY	1.6	DRY	1.6
2	OTHER	12.25	9.625	NEW	API	N	0	2930	0	2929	3055	126	2930	J-55	40	BUTT	1.125	1.123	DRY	1.6	DRY	1.6
3	PRODUCTION	8.75	5.5	NEW	API	N	0	16415	0	8690	3055	-5635	16415	P-110	20	OTHER - TMK DQX, GBCD, CDC, DWC	1.125	1.125	DRY	1.8	DRY	1.8

Casing Attachments

Casing ID: 1 **String** SURFACE

Inspection Document:

Spec Document:

Tapered String Spec:

Casing Design Assumptions and Worksheet(s):

RS_0605_123H_Casing_Design_Assumptions_20190813015109.pdf

Operator Name: NOVO OIL AND GAS NORTHERN DELAWARE LLC**Well Name:** RANA SALADA FED COM 0605**Well Number:** 123H**Casing Attachments****Casing ID:** 2 **String** OTHER - Salt Protection**Inspection Document:****Spec Document:****Tapered String Spec:****Casing Design Assumptions and Worksheet(s):**

RS_0605_123H_Casing_Design_Assumptions_20190813015224.pdf

Casing ID: 3 **String** PRODUCTION**Inspection Document:****Spec Document:****Tapered String Spec:****Casing Design Assumptions and Worksheet(s):**

RS_0605_123H_Casing_Design_Assumptions_20190813015439.pdf

5.5in_TMK_Casing_Spec_20200219085957.pdf

5.5in_GB_Casing_Spec_20200219085958.pdf

5.5in_DWC_Casing_Spec_20200219085958.pdf

5.5in_USS_Casing_Spec_20200219092609.pdf

Section 4 - Cement

String Type	Lead/Tail	Stage Tool Depth	Top MD	Bottom MD	Quantity(sx)	Yield	Density	Cu Ft	Excess%	Cement type	Additives
SURFACE	Lead		0	0	0	0	0	0	0	None	None
SURFACE	Tail		0	365	313	1.62	13.8	507	100	Class C	gel + accelerator + LCM

Operator Name: NOVO OIL AND GAS NORTHERN DELAWARE LLC**Well Name:** RANA SALADA FED COM 0605**Well Number:** 123H

String Type	Lead/Tail	Stage Tool Depth	Top MD	Bottom MD	Quantity(sx)	Yield	Density	Cu Ft	Excess%	Cement type	Additives
OTHER	Lead		0	2930	365	2.28	11.9	832	20	Class C	gel + extender + LCM
OTHER	Tail		0	2930	200	1.34	14.8	268	20	Class C	gel + retarder + LCM
PRODUCTION	Lead		0	1641 5	593	4.08	9.2	2419	20	Class H	fluid loss + retarder + LCM + extender & beads
PRODUCTION	Tail		0	1641 5	1800	1.42	13.2	2556	20	Class H	fluid loss + retarder + LCM

Section 5 - Circulating Medium

Mud System Type: Closed**Will an air or gas system be Used?** NO**Description of the equipment for the circulating system in accordance with Onshore Order #2:****Diagram of the equipment for the circulating system in accordance with Onshore Order #2:**

Describe what will be on location to control well or mitigate other conditions: Necessary mud products (barite, bentonite, LCM) to control weight and fluid loss will be on site at all times. Mud program may change due to hole conditions.

Describe the mud monitoring system utilized: An electronic PVT mud system will monitor flow rate, pump pressure, stroke rate, and volume.

Circulating Medium Table

Top Depth	Bottom Depth	Mud Type	Min Weight (lbs/gal)	Max Weight (lbs/gal)	Density (lbs/cu ft)	Gel Strength (lbs/100 sqft)	PH	Viscosity (CP)	Salinity (ppm)	Filtration (cc)	Additional Characteristics
0	365	OTHER : Fresh water spud	8.3	8.3							
365	2930	OTHER : Brine or cut brine	9.8	10.2							
2930	1641 5	OIL-BASED MUD	8.5	10							

Operator Name: NOVO OIL AND GAS NORTHERN DELAWARE LLC**Well Name:** RANA SALADA FED COM 0605**Well Number:** 123H

Section 6 - Test, Logging, Coring

List of production tests including testing procedures, equipment and safety measures:

A 2-person mud logging program will be used from 3000 to TD.

GR log will be acquired by MWD tools from the intermediate casing to TD.

List of open and cased hole logs run in the well:

GAMMA RAY LOG, MUD LOG/GEOLOGICAL LITHOLOGY LOG,

Coring operation description for the well:

No core or drill stem test is planned.

Section 7 - Pressure

Anticipated Bottom Hole Pressure: 4192**Anticipated Surface Pressure:** 2280**Anticipated Bottom Hole Temperature(F):** 150**Anticipated abnormal pressures, temperatures, or potential geologic hazards?** NO**Describe:****Contingency Plans geohazards description:****Contingency Plans geohazards****Hydrogen Sulfide drilling operations plan required?** YES**Hydrogen sulfide drilling operations**

RS_0605_123H_H2S_Plan_v2_20220523163839.pdf

Section 8 - Other Information

Proposed horizontal/directional/multi-lateral plan submission:

RS_0605_123H_Horizontal_Plan_20190813020220.pdf

Other proposed operations facets description:**Other proposed operations facets attachment:**

RS_0605_123H_Drill_Plan_20190813020306.pdf

RS_0605_123H_Speedhead_Specs_20190813020411.pdf

CoFlex_Certs_20200219090053.pdf

Other Variance attachment:

RS_0605_123H_Casing_Cement_Variance_20190813020247.pdf

RS_0605_123H_Alternative_Casing_Spec_Request_20200219090158.pdf

Novo Oil & Gas, LLC

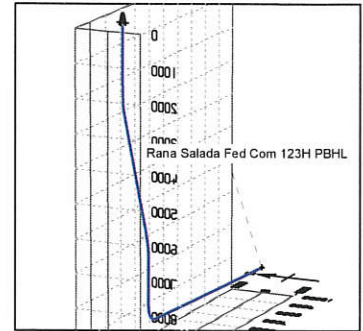
**PROJECT DETAILS:** Eddy County, NM

Geodetic System: US State Plane 1983
 Datum: North American Datum 1983
 Ellipsoid: GRS 1980
 Zone: New Mexico Eastern Zone
 North Reference: Grid
 System Datum: Mean Sea Level
 To convert a True Direction to a Grid Direction, Subtract 0.16°
 To convert a Magnetic Direction to a True Direction, Add 6.96° East
 To convert a Magnetic Direction to a Grid Direction, Add 6.80°

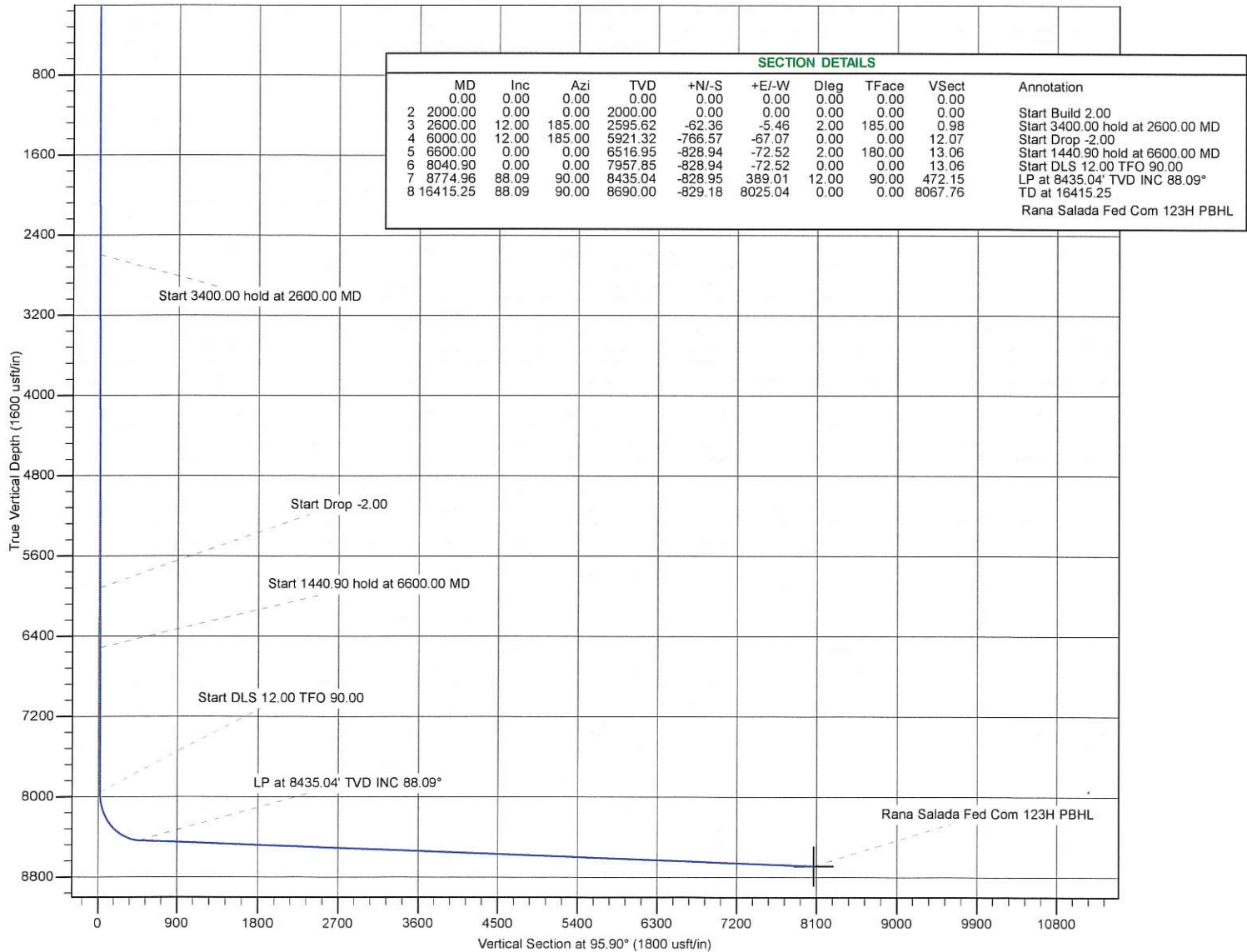
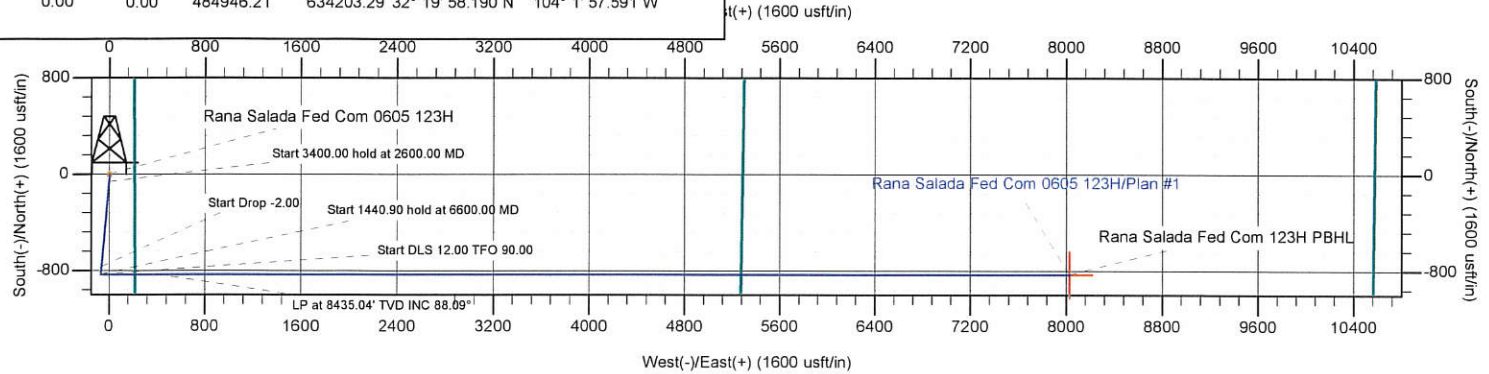


Azimuths to Grid North
 True North: -0.16°
 Magnetic North: 6.80°

Magnetic Field
 Strength: 47749.2nT
 Dip Angle: 60.06°
 Date: 06/23/2019
 Model: IGRF2015

**WELL DETAILS:** Rana Salada Fed Com 0605 123H

GL 3055' + 25' KB @ 3080.00usft
 Northing 484946.21 Easting 634203.29
 Latitude 32° 19' 58.190 N Longitude 104° 1' 57.591 W



Hawkeye Directional

Planning Report



Database:	HED_Compass_DSN	Local Co-ordinate Reference:	Well Rana Salada Fed Com 0605 123H
Company:	Novo Oil & Gas, LLC	TVD Reference:	GL 3055' + 25' KB @ 3080.00usft
Project:	Eddy County, NM	MD Reference:	GL 3055' + 25' KB @ 3080.00usft
Site:	SEC 1 - T23S - R28E	North Reference:	Grid
Well:	Rana Salada Fed Com 0605 123H	Survey Calculation Method:	Minimum Curvature
Wellbore:	OH		
Design:	Plan #1		

Project	Eddy County, NM		
Map System:	US State Plane 1983	System Datum:	Mean Sea Level
Geo Datum:	North American Datum 1983		
Map Zone:	New Mexico Eastern Zone		

Site		SEC 1 - T23S - R28E			
Site Position:		Northing:	485,859.91 usft	Latitude:	32° 20' 7.234 N
From:	Map	Easting:	634,120.16 usft	Longitude:	104° 1' 58.530 W
Position Uncertainty:	0.00 usft	Slot Radius:	13.200 in	Grid Convergence:	0.16 °

Well	Rana Salada Fed Com 0605 123H					
Well Position	+N/-S	-913.70 usft	Northing:	484,946.21 usft	Latitude:	32° 19' 58.190 N
	+E/-W	83.13 usft	Easting:	634,203.29 usft	Longitude:	104° 1' 57.591 W
Position Uncertainty		0.00 usft	Wellhead Elevation:		Ground Level:	3,055.00 usft

Wellbore	OH				
Magnetics	Model Name	Sample Date	Declination (°)	Dip Angle (°)	Field Strength (nT)
	IGRF2015	06/23/19	6.96	60.06	47,749.15003362

Design	Plan #1			
Audit Notes:				
Version:	Phase:	PLAN	Tie On Depth:	0.00
Vertical Section:	Depth From (TVD) (usft)	+N/-S (usft)	+E/-W (usft)	Direction (°)
	0.00	0.00	0.00	95.90

Plan Survey Tool Program	Date	06/23/19		
Depth From (usft)	Depth To (usft)	Survey (Wellbore)	Tool Name	Remarks
1	0.00	16,414.38	Plan #1 (OH)	MWD
				OWSG MWD - Standard

Plan Sections										
Measured Depth (usft)	Inclination (°)	Azimuth (°)	Vertical Depth (usft)	+N/-S (usft)	+E/-W (usft)	Dogleg Rate (°/100ft)	Build Rate (°/100ft)	Turn Rate (°/100ft)	TFO (°)	Target
0.00	0.00	0.00	0.00	0.00	0.00	0.00	0.00	0.00	0.00	
2,000.00	0.00	0.00	2,000.00	0.00	0.00	0.00	0.00	0.00	0.00	
2,600.00	12.00	185.00	2,595.62	-62.36	-5.46	2.00	2.00	0.00	185.00	
6,000.00	12.00	185.00	5,921.32	-766.57	-67.07	0.00	0.00	0.00	0.00	
6,600.00	0.00	0.00	6,516.95	-828.94	-72.52	2.00	-2.00	0.00	180.00	
8,040.90	0.00	0.00	7,957.85	-828.94	-72.52	0.00	0.00	0.00	0.00	
8,774.96	88.09	90.00	8,435.04	-828.95	389.01	12.00	12.00	12.26	90.00	
16,415.25	88.09	90.00	8,690.00	-829.18	8,025.04	0.00	0.00	0.00	0.00	Rana Salada Fed Cor

Hawkeye Directional

Planning Report



Database:	HED_Compass_DSN	Local Co-ordinate Reference:	Well Rana Salada Fed Com 0605 123H
Company:	Novo Oil & Gas, LLC	TVD Reference:	GL 3055' + 25' KB @ 3080.00usft
Project:	Eddy County, NM	MD Reference:	GL 3055' + 25' KB @ 3080.00usft
Site:	SEC 1 - T23S - R28E	North Reference:	Grid
Well:	Rana Salada Fed Com 0605 123H	Survey Calculation Method:	Minimum Curvature
Wellbore:	OH		
Design:	Plan #1		

Planned Survey										
Measured Depth (usft)	Inclination (°)	Azimuth (°)	Vertical Depth (usft)	+N/-S (usft)	+E/-W (usft)	Vertical Section (usft)	Dogleg Rate (°/100ft)	Build Rate (°/100ft)	Turn Rate (°/100ft)	
0.00	0.00	0.00	0.00	0.00	0.00	0.00	0.00	0.00	0.00	
100.00	0.00	0.00	100.00	0.00	0.00	0.00	0.00	0.00	0.00	
200.00	0.00	0.00	200.00	0.00	0.00	0.00	0.00	0.00	0.00	
300.00	0.00	0.00	300.00	0.00	0.00	0.00	0.00	0.00	0.00	
400.00	0.00	0.00	400.00	0.00	0.00	0.00	0.00	0.00	0.00	
500.00	0.00	0.00	500.00	0.00	0.00	0.00	0.00	0.00	0.00	
600.00	0.00	0.00	600.00	0.00	0.00	0.00	0.00	0.00	0.00	
700.00	0.00	0.00	700.00	0.00	0.00	0.00	0.00	0.00	0.00	
800.00	0.00	0.00	800.00	0.00	0.00	0.00	0.00	0.00	0.00	
900.00	0.00	0.00	900.00	0.00	0.00	0.00	0.00	0.00	0.00	
1,000.00	0.00	0.00	1,000.00	0.00	0.00	0.00	0.00	0.00	0.00	
1,100.00	0.00	0.00	1,100.00	0.00	0.00	0.00	0.00	0.00	0.00	
1,200.00	0.00	0.00	1,200.00	0.00	0.00	0.00	0.00	0.00	0.00	
1,300.00	0.00	0.00	1,300.00	0.00	0.00	0.00	0.00	0.00	0.00	
1,400.00	0.00	0.00	1,400.00	0.00	0.00	0.00	0.00	0.00	0.00	
1,500.00	0.00	0.00	1,500.00	0.00	0.00	0.00	0.00	0.00	0.00	
1,600.00	0.00	0.00	1,600.00	0.00	0.00	0.00	0.00	0.00	0.00	
1,700.00	0.00	0.00	1,700.00	0.00	0.00	0.00	0.00	0.00	0.00	
1,800.00	0.00	0.00	1,800.00	0.00	0.00	0.00	0.00	0.00	0.00	
1,900.00	0.00	0.00	1,900.00	0.00	0.00	0.00	0.00	0.00	0.00	
2,000.00	0.00	0.00	2,000.00	0.00	0.00	0.00	0.00	0.00	0.00	
Start Build 2.00										
2,100.00	2.00	185.00	2,099.98	-1.74	-0.15	0.03	2.00	2.00	0.00	
2,200.00	4.00	185.00	2,199.84	-6.95	-0.61	0.11	2.00	2.00	0.00	
2,300.00	6.00	185.00	2,299.45	-15.63	-1.37	0.25	2.00	2.00	0.00	
2,400.00	8.00	185.00	2,398.70	-27.77	-2.43	0.44	2.00	2.00	0.00	
2,500.00	10.00	185.00	2,497.47	-43.36	-3.79	0.68	2.00	2.00	0.00	
2,600.00	12.00	185.00	2,595.62	-62.36	-5.46	0.98	2.00	2.00	0.00	
Start 3400.00 hold at 2600.00 MD										
2,700.00	12.00	185.00	2,693.44	-83.08	-7.27	1.31	0.00	0.00	0.00	
2,800.00	12.00	185.00	2,791.25	-103.79	-9.08	1.63	0.00	0.00	0.00	
2,900.00	12.00	185.00	2,889.07	-124.50	-10.89	1.96	0.00	0.00	0.00	
3,000.00	12.00	185.00	2,986.88	-145.21	-12.70	2.29	0.00	0.00	0.00	
3,100.00	12.00	185.00	3,084.70	-165.92	-14.52	2.61	0.00	0.00	0.00	
3,200.00	12.00	185.00	3,182.51	-186.64	-16.33	2.94	0.00	0.00	0.00	
3,300.00	12.00	185.00	3,280.33	-207.35	-18.14	3.27	0.00	0.00	0.00	
3,400.00	12.00	185.00	3,378.14	-228.06	-19.95	3.59	0.00	0.00	0.00	
3,500.00	12.00	185.00	3,475.96	-248.77	-21.76	3.92	0.00	0.00	0.00	
3,600.00	12.00	185.00	3,573.77	-269.48	-23.58	4.24	0.00	0.00	0.00	
3,700.00	12.00	185.00	3,671.59	-290.20	-25.39	4.57	0.00	0.00	0.00	
3,800.00	12.00	185.00	3,769.40	-310.91	-27.20	4.90	0.00	0.00	0.00	
3,900.00	12.00	185.00	3,867.22	-331.62	-29.01	5.22	0.00	0.00	0.00	
4,000.00	12.00	185.00	3,965.03	-352.33	-30.83	5.55	0.00	0.00	0.00	
4,100.00	12.00	185.00	4,062.84	-373.05	-32.64	5.88	0.00	0.00	0.00	
4,200.00	12.00	185.00	4,160.66	-393.76	-34.45	6.20	0.00	0.00	0.00	
4,300.00	12.00	185.00	4,258.47	-414.47	-36.26	6.53	0.00	0.00	0.00	
4,400.00	12.00	185.00	4,356.29	-435.18	-38.07	6.85	0.00	0.00	0.00	
4,500.00	12.00	185.00	4,454.10	-455.89	-39.89	7.18	0.00	0.00	0.00	
4,600.00	12.00	185.00	4,551.92	-476.61	-41.70	7.51	0.00	0.00	0.00	
4,700.00	12.00	185.00	4,649.73	-497.32	-43.51	7.83	0.00	0.00	0.00	
4,800.00	12.00	185.00	4,747.55	-518.03	-45.32	8.16	0.00	0.00	0.00	
4,900.00	12.00	185.00	4,845.36	-538.74	-47.13	8.49	0.00	0.00	0.00	
5,000.00	12.00	185.00	4,943.18	-559.45	-48.95	8.81	0.00	0.00	0.00	

Hawkeye Directional

Planning Report



Database:	HED_Compass_DSN	Local Co-ordinate Reference:	Well Rana Salada Fed Com 0605 123H
Company:	Novo Oil & Gas, LLC	TVD Reference:	GL 3055' + 25' KB @ 3080.00usft
Project:	Eddy County, NM	MD Reference:	GL 3055' + 25' KB @ 3080.00usft
Site:	SEC 1 - T23S - R28E	North Reference:	Grid
Well:	Rana Salada Fed Com 0605 123H	Survey Calculation Method:	Minimum Curvature
Wellbore:	OH		
Design:	Plan #1		

Planned Survey									
Measured Depth (usft)	Inclination (°)	Azimuth (°)	Vertical Depth (usft)	+N/-S (usft)	+E/-W (usft)	Vertical Section (usft)	Dogleg Rate (°/100ft)	Build Rate (°/100ft)	Turn Rate (°/100ft)
5,100.00	12.00	185.00	5,040.99	-580.17	-50.76	9.14	0.00	0.00	0.00
5,200.00	12.00	185.00	5,138.81	-600.88	-52.57	9.46	0.00	0.00	0.00
5,300.00	12.00	185.00	5,236.62	-621.59	-54.38	9.79	0.00	0.00	0.00
5,400.00	12.00	185.00	5,334.44	-642.30	-56.19	10.12	0.00	0.00	0.00
5,500.00	12.00	185.00	5,432.25	-663.01	-58.01	10.44	0.00	0.00	0.00
5,600.00	12.00	185.00	5,530.07	-683.73	-59.82	10.77	0.00	0.00	0.00
5,700.00	12.00	185.00	5,627.88	-704.44	-61.63	11.10	0.00	0.00	0.00
5,800.00	12.00	185.00	5,725.70	-725.15	-63.44	11.42	0.00	0.00	0.00
5,900.00	12.00	185.00	5,823.51	-745.86	-65.25	11.75	0.00	0.00	0.00
6,000.00	12.00	185.00	5,921.32	-766.57	-67.07	12.07	0.00	0.00	0.00
Start Drop -2.00									
6,100.00	10.00	185.00	6,019.48	-785.58	-68.73	12.37	2.00	-2.00	0.00
6,200.00	8.00	185.00	6,118.25	-801.16	-70.09	12.62	2.00	-2.00	0.00
6,300.00	6.00	185.00	6,217.50	-813.30	-71.15	12.81	2.00	-2.00	0.00
6,400.00	4.00	185.00	6,317.11	-821.99	-71.91	12.95	2.00	-2.00	0.00
6,500.00	2.00	185.00	6,416.97	-827.20	-72.37	13.03	2.00	-2.00	0.00
6,600.00	0.00	0.00	6,516.95	-828.94	-72.52	13.06	2.00	-2.00	0.00
Start 1440.90 hold at 6600.00 MD									
6,700.00	0.00	0.00	6,616.95	-828.94	-72.52	13.06	0.00	0.00	0.00
6,800.00	0.00	0.00	6,716.95	-828.94	-72.52	13.06	0.00	0.00	0.00
6,900.00	0.00	0.00	6,816.95	-828.94	-72.52	13.06	0.00	0.00	0.00
7,000.00	0.00	0.00	6,916.95	-828.94	-72.52	13.06	0.00	0.00	0.00
7,100.00	0.00	0.00	7,016.95	-828.94	-72.52	13.06	0.00	0.00	0.00
7,200.00	0.00	0.00	7,116.95	-828.94	-72.52	13.06	0.00	0.00	0.00
7,300.00	0.00	0.00	7,216.95	-828.94	-72.52	13.06	0.00	0.00	0.00
7,400.00	0.00	0.00	7,316.95	-828.94	-72.52	13.06	0.00	0.00	0.00
7,500.00	0.00	0.00	7,416.95	-828.94	-72.52	13.06	0.00	0.00	0.00
7,600.00	0.00	0.00	7,516.95	-828.94	-72.52	13.06	0.00	0.00	0.00
7,700.00	0.00	0.00	7,616.95	-828.94	-72.52	13.06	0.00	0.00	0.00
7,800.00	0.00	0.00	7,716.95	-828.94	-72.52	13.06	0.00	0.00	0.00
7,900.00	0.00	0.00	7,816.95	-828.94	-72.52	13.06	0.00	0.00	0.00
8,000.00	0.00	0.00	7,916.95	-828.94	-72.52	13.06	0.00	0.00	0.00
8,040.90	0.00	0.00	7,957.85	-828.94	-72.52	13.06	0.00	0.00	0.00
Start DLS 12.00 TFO 90.00									
8,050.00	1.09	90.00	7,966.95	-828.94	-72.44	13.14	12.00	12.00	0.00
8,075.00	4.09	90.00	7,991.92	-828.94	-71.31	14.27	12.00	12.00	0.00
8,100.00	7.09	90.00	8,016.80	-828.94	-68.87	16.69	12.00	12.00	0.00
8,125.00	10.09	90.00	8,041.51	-828.94	-65.13	20.41	12.00	12.00	0.00
8,150.00	13.09	90.00	8,066.00	-828.94	-60.11	25.40	12.00	12.00	0.00
8,175.00	16.09	90.00	8,090.19	-828.94	-53.81	31.67	12.00	12.00	0.00
8,200.00	19.09	90.00	8,114.02	-828.94	-46.26	39.18	12.00	12.00	0.00
8,225.00	22.09	90.00	8,137.42	-828.94	-37.47	47.93	12.00	12.00	0.00
8,250.00	25.09	90.00	8,160.33	-828.94	-27.46	57.88	12.00	12.00	0.00
8,275.00	28.09	90.00	8,182.68	-828.94	-16.27	69.01	12.00	12.00	0.00
8,300.00	31.09	90.00	8,204.42	-828.94	-3.93	81.29	12.00	12.00	0.00
8,325.00	34.09	90.00	8,225.48	-828.94	9.54	94.68	12.00	12.00	0.00
8,350.00	37.09	90.00	8,245.81	-828.94	24.09	109.15	12.00	12.00	0.00
8,375.00	40.09	90.00	8,265.34	-828.94	39.68	124.66	12.00	12.00	0.00
8,400.00	43.09	90.00	8,284.04	-828.94	56.27	141.17	12.00	12.00	0.00
8,425.00	46.09	90.00	8,301.84	-828.94	73.82	158.63	12.00	12.00	0.00
8,450.00	49.09	90.00	8,318.70	-828.94	92.28	176.99	12.00	12.00	0.00
8,475.00	52.09	90.00	8,334.57	-828.94	111.59	196.20	12.00	12.00	0.00
8,500.00	55.09	90.00	8,349.40	-828.94	131.71	216.21	12.00	12.00	0.00

Hawkeye Directional Planning Report



Database:	HED_Compass_DSN	Local Co-ordinate Reference:	Well Rana Salada Fed Com 0605 123H
Company:	Novo Oil & Gas, LLC	TVD Reference:	GL 3055' + 25' KB @ 3080.00usft
Project:	Eddy County, NM	MD Reference:	GL 3055' + 25' KB @ 3080.00usft
Site:	SEC 1 - T23S - R28E	North Reference:	Grid
Well:	Rana Salada Fed Com 0605 123H	Survey Calculation Method:	Minimum Curvature
Wellbore:	OH		
Design:	Plan #1		

Planned Survey

Measured Depth (usft)	Inclination (°)	Azimuth (°)	Vertical Depth (usft)	+N/-S (usft)	+E/-W (usft)	Vertical Section (usft)	Dogleg Rate (°/100ft)	Build Rate (°/100ft)	Turn Rate (°/100ft)
8,525.00	58.09	90.00	8,363.17	-828.94	152.58	236.97	12.00	12.00	0.00
8,550.00	61.09	90.00	8,375.82	-828.95	174.14	258.41	12.00	12.00	0.00
8,575.00	64.09	90.00	8,387.32	-828.95	196.33	280.48	12.00	12.00	0.00
8,600.00	67.09	90.00	8,397.65	-828.95	219.09	303.13	12.00	12.00	0.00
8,625.00	70.09	90.00	8,406.78	-828.95	242.36	326.28	12.00	12.00	0.00
8,650.00	73.09	90.00	8,414.67	-828.95	266.08	349.87	12.00	12.00	0.00
8,675.00	76.09	90.00	8,421.31	-828.95	290.18	373.84	12.00	12.00	0.00
8,700.00	79.09	90.00	8,426.68	-828.95	314.59	398.12	12.00	12.00	0.00
8,725.00	82.09	90.00	8,430.77	-828.95	339.25	422.65	12.00	12.00	0.00
8,750.00	85.09	90.00	8,433.56	-828.95	364.10	447.36	12.00	12.00	0.00
8,774.96	88.09	90.00	8,435.04	-828.95	389.01	472.15	12.00	12.00	0.00
LP at 8435.04' TVD INC 88.09°									
8,800.00	88.09	90.00	8,435.88	-828.95	414.03	497.04	0.00	0.00	0.00
8,900.00	88.09	90.00	8,439.22	-828.96	513.98	596.45	0.00	0.00	0.00
9,000.00	88.09	90.00	8,442.55	-828.96	613.92	695.87	0.00	0.00	0.00
9,100.00	88.09	90.00	8,445.89	-828.96	713.87	795.28	0.00	0.00	0.00
9,200.00	88.09	90.00	8,449.23	-828.96	813.81	894.70	0.00	0.00	0.00
9,300.00	88.09	90.00	8,452.56	-828.97	913.76	994.12	0.00	0.00	0.00
9,400.00	88.09	90.00	8,455.90	-828.97	1,013.70	1,093.53	0.00	0.00	0.00
9,500.00	88.09	90.00	8,459.24	-828.97	1,113.64	1,192.95	0.00	0.00	0.00
9,600.00	88.09	90.00	8,462.58	-828.98	1,213.59	1,292.36	0.00	0.00	0.00
9,700.00	88.09	90.00	8,465.91	-828.98	1,313.53	1,391.78	0.00	0.00	0.00
9,800.00	88.09	90.00	8,469.25	-828.98	1,413.48	1,491.19	0.00	0.00	0.00
9,900.00	88.09	90.00	8,472.59	-828.99	1,513.42	1,590.61	0.00	0.00	0.00
10,000.00	88.09	90.00	8,475.92	-828.99	1,613.37	1,690.02	0.00	0.00	0.00
10,100.00	88.09	90.00	8,479.26	-828.99	1,713.31	1,789.44	0.00	0.00	0.00
10,200.00	88.09	90.00	8,482.60	-828.99	1,813.25	1,888.85	0.00	0.00	0.00
10,300.00	88.09	90.00	8,485.93	-829.00	1,913.20	1,988.27	0.00	0.00	0.00
10,400.00	88.09	90.00	8,489.27	-829.00	2,013.14	2,087.68	0.00	0.00	0.00
10,500.00	88.09	90.00	8,492.61	-829.00	2,113.09	2,187.10	0.00	0.00	0.00
10,600.00	88.09	90.00	8,495.95	-829.01	2,213.03	2,286.52	0.00	0.00	0.00
10,700.00	88.09	90.00	8,499.28	-829.01	2,312.98	2,385.93	0.00	0.00	0.00
10,800.00	88.09	90.00	8,502.62	-829.01	2,412.92	2,485.35	0.00	0.00	0.00
10,900.00	88.09	90.00	8,505.96	-829.02	2,512.86	2,584.76	0.00	0.00	0.00
11,000.00	88.09	90.00	8,509.29	-829.02	2,612.81	2,684.18	0.00	0.00	0.00
11,100.00	88.09	90.00	8,512.63	-829.02	2,712.75	2,783.59	0.00	0.00	0.00
11,200.00	88.09	90.00	8,515.97	-829.02	2,812.70	2,883.01	0.00	0.00	0.00
11,300.00	88.09	90.00	8,519.30	-829.03	2,912.64	2,982.42	0.00	0.00	0.00
11,400.00	88.09	90.00	8,522.64	-829.03	3,012.59	3,081.84	0.00	0.00	0.00
11,500.00	88.09	90.00	8,525.98	-829.03	3,112.53	3,181.25	0.00	0.00	0.00
11,600.00	88.09	90.00	8,529.32	-829.04	3,212.47	3,280.67	0.00	0.00	0.00
11,700.00	88.09	90.00	8,532.65	-829.04	3,312.42	3,380.08	0.00	0.00	0.00
11,800.00	88.09	90.00	8,535.99	-829.04	3,412.36	3,479.50	0.00	0.00	0.00
11,900.00	88.09	90.00	8,539.33	-829.05	3,512.31	3,578.91	0.00	0.00	0.00
12,000.00	88.09	90.00	8,542.66	-829.05	3,612.25	3,678.33	0.00	0.00	0.00
12,100.00	88.09	90.00	8,546.00	-829.05	3,712.20	3,777.75	0.00	0.00	0.00
12,200.00	88.09	90.00	8,549.34	-829.05	3,812.14	3,877.16	0.00	0.00	0.00
12,300.00	88.09	90.00	8,552.67	-829.06	3,912.08	3,976.58	0.00	0.00	0.00
12,400.00	88.09	90.00	8,556.01	-829.06	4,012.03	4,075.99	0.00	0.00	0.00
12,500.00	88.09	90.00	8,559.35	-829.06	4,111.97	4,175.41	0.00	0.00	0.00
12,600.00	88.09	90.00	8,562.69	-829.07	4,211.92	4,274.82	0.00	0.00	0.00
12,700.00	88.09	90.00	8,566.02	-829.07	4,311.86	4,374.24	0.00	0.00	0.00
12,800.00	88.09	90.00	8,569.36	-829.07	4,411.81	4,473.65	0.00	0.00	0.00
12,900.00	88.09	90.00	8,572.70	-829.08	4,511.75	4,573.07	0.00	0.00	0.00

Hawkeye Directional Planning Report



Database:	HED_Compass_DSN	Local Co-ordinate Reference:	Well Rana Salada Fed Com 0605 123H
Company:	Novo Oil & Gas, LLC	TVD Reference:	GL 3055' + 25' KB @ 3080.00usft
Project:	Eddy County, NM	MD Reference:	GL 3055' + 25' KB @ 3080.00usft
Site:	SEC 1 - T23S - R28E	North Reference:	Grid
Well:	Rana Salada Fed Com 0605 123H	Survey Calculation Method:	Minimum Curvature
Wellbore:	OH		
Design:	Plan #1		

Planned Survey									
Measured Depth (usft)	Inclination (°)	Azimuth (°)	Vertical Depth (usft)	+N/-S (usft)	+E/-W (usft)	Vertical Section (usft)	Dogleg Rate (°/100ft)	Build Rate (°/100ft)	Turn Rate (°/100ft)
13,000.00	88.09	90.00	8,576.03	-829.08	4,611.70	4,672.48	0.00	0.00	0.00
13,100.00	88.09	90.00	8,579.37	-829.08	4,711.64	4,771.90	0.00	0.00	0.00
13,200.00	88.09	90.00	8,582.71	-829.08	4,811.58	4,871.31	0.00	0.00	0.00
13,300.00	88.09	90.00	8,586.04	-829.09	4,911.53	4,970.73	0.00	0.00	0.00
13,400.00	88.09	90.00	8,589.38	-829.09	5,011.47	5,070.15	0.00	0.00	0.00
13,500.00	88.09	90.00	8,592.72	-829.09	5,111.42	5,169.56	0.00	0.00	0.00
13,600.00	88.09	90.00	8,596.06	-829.10	5,211.36	5,268.98	0.00	0.00	0.00
13,700.00	88.09	90.00	8,599.39	-829.10	5,311.31	5,368.39	0.00	0.00	0.00
13,800.00	88.09	90.00	8,602.73	-829.10	5,411.25	5,467.81	0.00	0.00	0.00
13,900.00	88.09	90.00	8,606.07	-829.10	5,511.19	5,567.22	0.00	0.00	0.00
14,000.00	88.09	90.00	8,609.40	-829.11	5,611.14	5,666.64	0.00	0.00	0.00
14,100.00	88.09	90.00	8,612.74	-829.11	5,711.08	5,766.05	0.00	0.00	0.00
14,200.00	88.09	90.00	8,616.08	-829.11	5,811.03	5,865.47	0.00	0.00	0.00
14,300.00	88.09	90.00	8,619.41	-829.12	5,910.97	5,964.88	0.00	0.00	0.00
14,400.00	88.09	90.00	8,622.75	-829.12	6,010.92	6,064.30	0.00	0.00	0.00
14,500.00	88.09	90.00	8,626.09	-829.12	6,110.86	6,163.71	0.00	0.00	0.00
14,600.00	88.09	90.00	8,629.43	-829.13	6,210.80	6,263.13	0.00	0.00	0.00
14,700.00	88.09	90.00	8,632.76	-829.13	6,310.75	6,362.54	0.00	0.00	0.00
14,800.00	88.09	90.00	8,636.10	-829.13	6,410.69	6,461.96	0.00	0.00	0.00
14,900.00	88.09	90.00	8,639.44	-829.13	6,510.64	6,561.38	0.00	0.00	0.00
15,000.00	88.09	90.00	8,642.77	-829.14	6,610.58	6,660.79	0.00	0.00	0.00
15,100.00	88.09	90.00	8,646.11	-829.14	6,710.53	6,760.21	0.00	0.00	0.00
15,200.00	88.09	90.00	8,649.45	-829.14	6,810.47	6,859.62	0.00	0.00	0.00
15,300.00	88.09	90.00	8,652.78	-829.15	6,910.41	6,959.04	0.00	0.00	0.00
15,400.00	88.09	90.00	8,656.12	-829.15	7,010.36	7,058.45	0.00	0.00	0.00
15,500.00	88.09	90.00	8,659.46	-829.15	7,110.30	7,157.87	0.00	0.00	0.00
15,600.00	88.09	90.00	8,662.80	-829.16	7,210.25	7,257.28	0.00	0.00	0.00
15,700.00	88.09	90.00	8,666.13	-829.16	7,310.19	7,356.70	0.00	0.00	0.00
15,800.00	88.09	90.00	8,669.47	-829.16	7,410.14	7,456.11	0.00	0.00	0.00
15,900.00	88.09	90.00	8,672.81	-829.16	7,510.08	7,555.53	0.00	0.00	0.00
16,000.00	88.09	90.00	8,676.14	-829.17	7,610.02	7,654.94	0.00	0.00	0.00
16,100.00	88.09	90.00	8,679.48	-829.17	7,709.97	7,754.36	0.00	0.00	0.00
16,200.00	88.09	90.00	8,682.82	-829.17	7,809.91	7,853.77	0.00	0.00	0.00
16,300.00	88.09	90.00	8,686.15	-829.18	7,909.86	7,953.19	0.00	0.00	0.00
16,400.00	88.09	90.00	8,689.49	-829.18	8,009.80	8,052.61	0.00	0.00	0.00
16,415.25	88.09	90.00	8,690.00	-829.18	8,025.04	8,067.76	0.00	0.00	0.00
TD at 16415.25									

Design Targets									
Target Name	Dip Angle (°)	Dip Dir. (°)	TVD (usft)	+N/-S (usft)	+E/-W (usft)	Northing (usft)	Easting (usft)	Latitude	Longitude
- hit/miss target									
- Shape									
Rana Salada Fed Com 1	0.00	0.00	8,690.00	-829.18	8,025.04	484,117.03	642,228.33	32° 19' 49.753 N	104° 0' 24.085 W
- plan hits target center									
- Point									

Hawkeye Directional

Planning Report



Database:	HED_Compass_DSN	Local Co-ordinate Reference:	Well Rana Salada Fed Com 0605 123H
Company:	Novo Oil & Gas, LLC	TVD Reference:	GL 3055' + 25' KB @ 3080.00usft
Project:	Eddy County, NM	MD Reference:	GL 3055' + 25' KB @ 3080.00usft
Site:	SEC 1 - T23S - R28E	North Reference:	Grid
Well:	Rana Salada Fed Com 0605 123H	Survey Calculation Method:	Minimum Curvature
Wellbore:	OH		
Design:	Plan #1		

Plan Annotations

Measured Depth (usft)	Vertical Depth (usft)	Local Coordinates		Comment
		+N/-S (usft)	+E/-W (usft)	
2,000.00	2,000.00	0.00	0.00	Start Build 2.00
2,600.00	2,595.62	-62.36	-5.46	Start 3400.00 hold at 2600.00 MD
6,000.00	5,921.32	-766.57	-67.07	Start Drop -2.00
6,600.00	6,516.95	-828.94	-72.52	Start 1440.90 hold at 6600.00 MD
8,040.90	7,957.85	-828.94	-72.52	Start DLS 12.00 TFO 90.00
8,774.96	8,435.04	-828.95	389.01	LP at 8435.04' TVD INC 88.09°
16,415.25	8,690.00	-829.18	8,025.04	TD at 16415.25

PECOS DISTRICT DRILLING CONDITIONS OF APPROVAL

OPERATOR'S NAME:	NOVO OIL AND GAS
LEASE NO.:	NMNM061349
WELL NAME & NO.:	RANA SALADA FED COM 0605 123H
SURFACE HOLE FOOTAGE:	1942'/S & 210'/E
BOTTOM HOLE FOOTAGE:	1254/S & 2540'/E
LOCATION:	Section 1, T.23 S., R.28 E., NMPM
COUNTY:	Eddy County, New Mexico

COA

H2S	<input type="radio"/> Yes	<input checked="" type="radio"/> No	
Potash	<input checked="" type="radio"/> None	<input type="radio"/> Secretary	<input type="radio"/> R-111-P
Cave/Karst Potential	<input type="radio"/> Low	<input type="radio"/> Medium	<input checked="" type="radio"/> High
Cave/Karst Potential	<input type="radio"/> Critical		
Variance	<input type="radio"/> None	<input checked="" type="radio"/> Flex Hose	<input type="radio"/> Other
Wellhead	<input type="radio"/> Conventional	<input checked="" type="radio"/> Multibowl	<input type="radio"/> Both
Other	<input type="checkbox"/> 4 String Area	<input type="checkbox"/> Capitan Reef	<input type="checkbox"/> WIPP
Other	<input checked="" type="checkbox"/> Fluid Filled	<input type="checkbox"/> Cement Squeeze	<input type="checkbox"/> Pilot Hole
Special Requirements	<input type="checkbox"/> Water Disposal	<input checked="" type="checkbox"/> COM	<input type="checkbox"/> Unit

A. HYDROGEN SULFIDE

Hydrogen Sulfide (H2S) monitors shall be installed prior to drilling out the surface shoe. If H2S is detected in concentrations greater than 100 ppm, the Hydrogen Sulfide area shall meet Onshore Order 6 requirements, which includes equipment and personnel/public protection items. If Hydrogen Sulfide is encountered, provide measured values and formations to the BLM.

B. CASING

1. The 13-3/8 inch surface casing shall be set at approximately **365** feet (a minimum of 70 feet (Eddy County) into the Rustler Anhydrite and above the salt) and cemented to the surface.
 - a. If cement does not circulate to the surface, the appropriate BLM office shall be notified and a temperature survey utilizing an electronic type temperature survey with surface log readout will be used or a cement bond log shall be run to verify the top of the cement. Temperature survey will be run a minimum of

six hours after pumping cement and ideally between 8-10 hours after completing the cement job.

- b. Wait on cement (WOC) time for a primary cement job will be a minimum of **8 hours** or 500 pounds compressive strength, whichever is greater. (This is to include the lead cement)
 - c. Wait on cement (WOC) time for a remedial job will be a minimum of 4 hours after bringing cement to surface or 500 pounds compressive strength, whichever is greater.
 - d. If cement falls back, remedial cementing will be done prior to drilling out that string.
2. The **9-5/8** inch intermediate casing shall be set at approximately **2929** feet. The minimum required fill of cement behind the **9-5/8** inch intermediate casing is:

Option 1 (Single Stage):

- Cement to surface. If cement does not circulate see B.1.a, c-d above.
Wait on cement (WOC) time for a primary cement job is to include the lead cement slurry due to cave/karst or potash.

Intermediate casing must be kept fluid filled to meet BLM minimum collapse requirement.

- ❖ In High Cave/Karst Areas if cement does not circulate to surface on the first two casing strings, the cement on the 3rd casing string must come to surface.

3. The minimum required fill of cement behind the **5-1/2** inch production casing is:

Option 1 (Single Stage):

- Cement should tie-back at least **200 feet** into previous casing string. Operator shall provide method of verification.

C. PRESSURE CONTROL

1. Variance approved to use flex line from BOP to choke manifold. Manufacturer's specification to be readily available. No external damage to flex line. Flex line to be installed as straight as possible (no hard bends).'
2. **BOP REQUIREMENTS**

Option 1:

- a. Minimum working pressure of the blowout preventer (BOP) and related equipment (BOPE) required for drilling below the surface casing shoe shall be **2000 (2M)** psi.
- b. Minimum working pressure of the blowout preventer (BOP) and related equipment (BOPE) required for drilling below the intermediate casing shoe shall be **3000 (3M)** psi.

Option 2:

Operator has proposed a multi-bowl wellhead assembly. This assembly will only be tested when installed on the surface casing. Minimum working pressure of the blowout preventer (BOP) and related equipment (BOPE) required for drilling below the surface casing shoe shall be **5000 (5M)** psi.

- a. Wellhead shall be installed by manufacturer's representatives, submit documentation with subsequent sundry.
- b. If the welding is performed by a third party, the manufacturer's representative shall monitor the temperature to verify that it does not exceed the maximum temperature of the seal.
- c. Manufacturer representative shall install the test plug for the initial BOP test.
- d. If the cement does not circulate and one inch operations would have been possible with a standard wellhead, the well head shall be cut off, cementing operations performed and another wellhead installed.
- e. Whenever any seal subject to test pressure is broken, all the tests in OOGO2.III.A.2.i must be followed.

D. SPECIAL REQUIREMENT (S)

Communitization Agreement

- The operator will submit a Communitization Agreement to the Santa Fe Office, 301 Dinosaur Trail Santa Fe, New Mexico 87508, at least 90 days before the anticipated date of first production from a well subject to a spacing order issued by the New Mexico Oil Conservation Division. The Communitization Agreement will include the signatures of all working interest owners in all Federal and Indian leases subject to the Communitization Agreement (i.e., operating rights owners and lessees of record), or certification that the operator has obtained the written signatures of all such owners and will make those signatures available to the BLM immediately upon request.
- If the operator does not comply with this condition of approval, the BLM may take enforcement actions that include, but are not limited to, those specified in 43 CFR 3163.1.
- In addition, the well sign shall include the surface and bottom hole lease numbers. When the Communitization Agreement number is known, it shall also be on the sign.

GENERAL REQUIREMENTS

The BLM is to be notified in advance for a representative to witness:

- a. Spudding well (minimum of 24 hours)
- b. Setting and/or Cementing of all casing strings (minimum of 4 hours)
- c. BOPE tests (minimum of 4 hours)

☒ Eddy County

Call the Carlsbad Field Office, 620 East Greene St., Carlsbad, NM 88220,
(575) 361-2822

☒ Lea County

Call the Hobbs Field Station, 414 West Taylor, Hobbs NM 88240, (575)
393-3612

1. Unless the production casing has been run and cemented or the well has been properly plugged, the drilling rig shall not be removed from over the hole without prior approval.
 - a. In the event the operator has proposed to drill multiple wells utilizing a skid/walking rig. Operator shall secure the wellbore on the current well, after installing and testing the wellhead, by installing a blind flange of like pressure rating to the wellhead and a pressure gauge that can be monitored while drilling is performed on the other well(s).
 - b. When the operator proposes to set surface casing with Spudder Rig
 - Notify the BLM when moving in and removing the Spudder Rig.
 - Notify the BLM when moving in the 2nd Rig. Rig to be moved in within 90 days of notification that Spudder Rig has left the location.
 - BOP/BOPE test to be conducted per Onshore Oil and Gas Order No. 2 as soon as 2nd Rig is rigged up on well.
2. Floor controls are required for 3M or Greater systems. These controls will be on the rig floor, unobstructed, readily accessible to the driller and will be operational at all times during drilling and/or completion activities. Rig floor is defined as the area immediately around the rotary table; the area immediately above the substructure on which the draw works are located, this does not include the dog house or stairway area.
3. The record of the drilling rate along with the GR/N well log run from TD to surface (horizontal well – vertical portion of hole) shall be submitted to the BLM office as well as all other logs run on the borehole 30 days from completion. If available, a digital copy of the logs is to be submitted in addition to the paper copies. The Rustler top and top and bottom of Salt are to be recorded on the Completion Report.

A. CASING

1. Changes to the approved APD casing program need prior approval if the items substituted are of lesser grade or different casing size or are Non-API. The Operator can exchange the components of the proposal with that of superior strength (i.e. changing from J-55 to N-80, or from 36# to 40#). Changes to the approved cement program need prior approval if the altered cement plan has less volume or strength or if the changes are substantial (i.e. Multistage tool, ECP, etc.). The initial wellhead installed on the well will remain on the well with spools used as needed.
2. Wait on cement (WOC) for Potash Areas: After cementing but before commencing any tests, the casing string shall stand cemented under pressure until both of the following conditions have been met: 1) cement reaches a minimum compressive strength of 500 psi for all cement blends, 2) until cement has been in place at least 24 hours. WOC time will be recorded in the driller's log. The casing integrity test can be done (prior to the cement setting up) immediately after bumping the plug.
3. Wait on cement (WOC) for Water Basin: After cementing but before commencing any tests, the casing string shall stand cemented under pressure until both of the following conditions have been met: 1) cement reaches a minimum compressive strength of 500 psi at the shoe, 2) until cement has been in place at least 8 hours. WOC time will be recorded in the driller's log. See individual casing strings for details regarding lead cement slurry requirements. The casing integrity test can be done (prior to the cement setting up) immediately after bumping the plug.
4. Provide compressive strengths including hours to reach required 500 pounds compressive strength prior to cementing each casing string. Have well specific cement details onsite prior to pumping the cement for each casing string.
5. No pea gravel permitted for remedial or fall back remedial without prior authorization from the BLM engineer.
6. On that portion of any well approved for a 5M BOPE system or greater, a pressure integrity test of each casing shoe shall be performed. Formation at the shoe shall be tested to a minimum of the mud weight equivalent anticipated to control the formation pressure to the next casing depth or at total depth of the well. This test shall be performed before drilling more than 20 feet of new hole.
7. If hardband drill pipe is rotated inside casing, returns will be monitored for metal. If metal is found in samples, drill pipe will be pulled and rubber protectors which have a larger diameter than the tool joints of the drill pipe will be installed prior to continuing drilling operations.
8. Whenever a casing string is cemented in the R-111-P potash area, the NMOCD requirements shall be followed.

B. PRESSURE CONTROL

1. All blowout preventer (BOP) and related equipment (BOPE) shall comply with well control requirements as described in Onshore Oil and Gas Order No. 2 and API RP 53 Sec. 17.
2. If a variance is approved for a flexible hose to be installed from the BOP to the choke manifold, the following requirements apply: The flex line must meet the requirements of API 16C. Check condition of flexible line from BOP to choke manifold, replace if exterior is damaged or if line fails test. Line to be as straight as possible with no hard bends and is to be anchored according to Manufacturer's requirements. The flexible hose can be exchanged with a hose of equal size and equal or greater pressure rating. Anchor requirements, specification sheet and hydrostatic pressure test certification matching the hose in service, to be onsite for review. These documents shall be posted in the company man's trailer and on the rig floor.
3. 5M or higher system requires an HCR valve, remote kill line and annular to match. The remote kill line is to be installed prior to testing the system and tested to stack pressure.
4. If the operator has proposed a multi-bowl wellhead assembly in the APD. The following requirements must be met:
 - a. Wellhead shall be installed by manufacturer's representatives, submit documentation with subsequent sundry.
 - b. If the welding is performed by a third party, the manufacturer's representative shall monitor the temperature to verify that it does not exceed the maximum temperature of the seal.
 - c. Manufacturer representative shall install the test plug for the initial BOP test.
 - d. Whenever any seal subject to test pressure is broken, all the tests in OOGO2.III.A.2.i must be followed.
 - e. If the cement does not circulate and one inch operations would have been possible with a standard wellhead, the well head shall be cut off, cementing operations performed and another wellhead installed.
5. The appropriate BLM office shall be notified a minimum of 4 hours in advance for a representative to witness the tests.
 - a. In a water basin, for all casing strings utilizing slips, these are to be set as soon as the crew and rig are ready and any fallback cement remediation has been done. The casing cut-off and BOP installation can be initiated four hours after installing the slips, which will be approximately six hours after bumping the plug. For those casing strings not using slips, the minimum wait time before cut-off is eight hours after bumping the plug. BOP/BOPE testing can begin after cut-off or once cement reaches 500 psi compressive strength (including lead when specified), whichever is greater. However, if the float does not

hold, cut-off cannot be initiated until cement reaches 500 psi compressive strength (including lead when specified).

- b. In potash areas, for all casing strings utilizing slips, these are to be set as soon as the crew and rig are ready and any fallback cement remediation has been done. For all casing strings, casing cut-off and BOP installation can be initiated at twelve hours after bumping the plug. However, **no tests** shall commence until the cement has had a minimum of 24 hours setup time, except the casing pressure test can be initiated immediately after bumping the plug (only applies to single stage cement jobs).
- c. The tests shall be done by an independent service company utilizing a test plug not a cup or J-packer. The operator also has the option of utilizing an independent tester to test without a plug (i.e. against the casing) pursuant to Onshore Order 2 with the pressure not to exceed 70% of the burst rating for the casing. Any test against the casing must meet the WOC time for water basin (8 hours) or potash (24 hours) or 500 pounds compressive strength, whichever is greater, prior to initiating the test (see casing segment as lead cement may be critical item).
- d. The test shall be run on a 5000 psi chart for a 2-3M BOP/BOP, on a 10000 psi chart for a 5M BOP/BOPE and on a 15000 psi chart for a 10M BOP/BOPE. If a linear chart is used, it shall be a one hour chart. A circular chart shall have a maximum 2 hour clock. If a twelve hour or twenty-four hour chart is used, tester shall make a notation that it is run with a two hour clock.
- e. The results of the test shall be reported to the appropriate BLM office.
- f. All tests are required to be recorded on a calibrated test chart. A copy of the BOP/BOPE test chart and a copy of independent service company test will be submitted to the appropriate BLM office.
- g. The BOP/BOPE test shall include a low pressure test from 250 to 300 psi. The test will be held for a minimum of 10 minutes if test is done with a test plug and 30 minutes without a test plug. This test shall be performed prior to the test at full stack pressure.
- h. BOP/BOPE must be tested by an independent service company within 500 feet of the top of the Wolfcamp formation if the time between the setting of the intermediate casing and reaching this depth exceeds 20 days. This test does not exclude the test prior to drilling out the casing shoe as per Onshore Order No. 2.

C. DRILLING MUD

Mud system monitoring equipment, with derrick floor indicators and visual and audio alarms, shall be operating before drilling into the Wolfcamp formation, and shall be used until production casing is run and cemented.

D. WASTE MATERIAL AND FLUIDS

All waste (i.e. drilling fluids, trash, salts, chemicals, sewage, gray water, etc.) created as a result of drilling operations and completion operations shall be safely contained and disposed of properly at a waste disposal facility. No waste material or fluid shall be disposed of on the well location or surrounding area.

Porto-johns and trash containers will be on-location during fracturing operations or any other crew-intensive operations.

RI01112022



H₂S Drilling Operations Plan

- a. All personnel will be trained in H₂S working conditions as required by Onshore Order 6 before drilling out of the surface casing.
- b. Two briefing areas will be established. Each will be at least 150' from the wellhead, perpendicular from one another, and easily entered and exited. See H₂S page 5 for more details.
- c. H₂S Safety Equipment/Systems:
 - i. Well Control Equipment
 - Flare line will be $\geq 150'$ from the wellhead and ignited by a pilot light.
 - Beware of SO₂ created by flaring.
 - Choke manifold will include a remotely operated choke.
 - Mud gas separator
 - ii. Protective Equipment for Essential Personnel
 - Every person on site will be required to wear a personal H₂S and SO₂ monitor at all times while on site. Monitors will not be worn on hard hats. Monitors will be worn on the front of the chest.
 - One self-contained breathing apparatus (SCBA) 30-minute rescue pack will be at each briefing area. Two 30-minute SCBA packs will be stored in the safety trailer.
 - Four work/escape packs will be on the rig floor. Each pack will have a long enough hose to allow unimpaired work activity.
 - Four emergency escape packs will be in the doghouse for emergency evacuation.
 - Hand signals will be used when wearing protective breathing apparatus.
 - Stokes litter or stretcher
 - Two full OSHA compliant body harnesses
 - A 100-foot long x 5/8 inch OSHA compliant rope
 - One 20-pound ABC fire extinguisher

iii. H₂S Detection & Monitoring Equipment

- Every person on site will be required to wear a personal H₂S and SO₂ monitor at all times while on site. Monitors will not be worn on hard hats. Monitors will be worn on the front of the chest.
- A stationary detector with three sensors will be in the doghouse.
- Sensors will be installed on the rig floor, bell nipple, and at the end of the flow line or where drilling fluids are discharged.
- Visual alarm will be triggered at 10 ppm.
- Audible alarm will be triggered at 10 ppm.
- Calibration will occur at least every 30 days. Gas sample tubes will be kept in the safety trailer.

iv. Visual Warning System

- Color-coded H₂S condition sign will be set at the entrance to the pad.
- Color-coded condition flag will be installed to indicate current H₂S conditions.
- Two wind socks will be installed that will be visible from all sides.

v. Mud Program

- A water based mud with a pH of ≥ 10 will be maintained to control corrosion, H₂S gas returns to the surface, and minimize sulfide stress cracking and embrittlement.
- Drilling mud containing H₂S gas will be degassed at an optimum location for the rig configuration.
- This gas will be piped into the flare system.
- Enough mud additives will be on location to scavenge and/or neutralize H₂S where formation pressures are unknown.

vi. Metallurgy

- All equipment that has the potential to be exposed to H₂S will be suitable for H₂S service.
- Equipment that will meet these metallurgical standards include the drill string, casing, wellhead, BOP assembly, casing head and spool, rotating head, kill lines, choke, choke manifold and lines, valves, mud-gas separators, DST tools, test units, tubing, flanges, and other related equipment (elastomer packings and seals).

vii. Communication from well site

- Cell phones and/or two-way radios will be used to communicate from the well site.

d. A remote-controlled choke, mud-gas separator, and a rotating head will be installed before drilling or testing any formation expected to contain H₂S.

Company Personnel to be Notified

Kurt Shipley, Vice-President - Operations Office: (405) 609-1596

Local & County Agencies

Loving Fire Department 911 or (575) 745-3600

Eddy County Sheriff (Carlsbad) 911 (575) 887-7551

Eddy County Emergency Management (Carlsbad) (575) 887-9511

Carlsbad Medical Center Hospital (575) 887-4100

Eddy County South Road Department (Carlsbad) (575) 885-4835

State Agencies

NM State Police (Carlsbad) (575) 885-3138

NM Oil Conservation (Artesia) (575) 748-1283

NM Oil Conservation (Santa Fe) (505) 476-3440

NM Dept. of Transportation (Roswell) (575) 637-7201

Federal Agencies

BLM Carlsbad Field Office (575) 234-5972

National Response Center (800) 424-8802

US EPA Region 6 (Dallas) (800) 887-6063

(214) 665-6444

Residents within 2 miles

none

Air Evacuation

Med Flight Air Ambulance (Albuquerque) (800) 842-4431

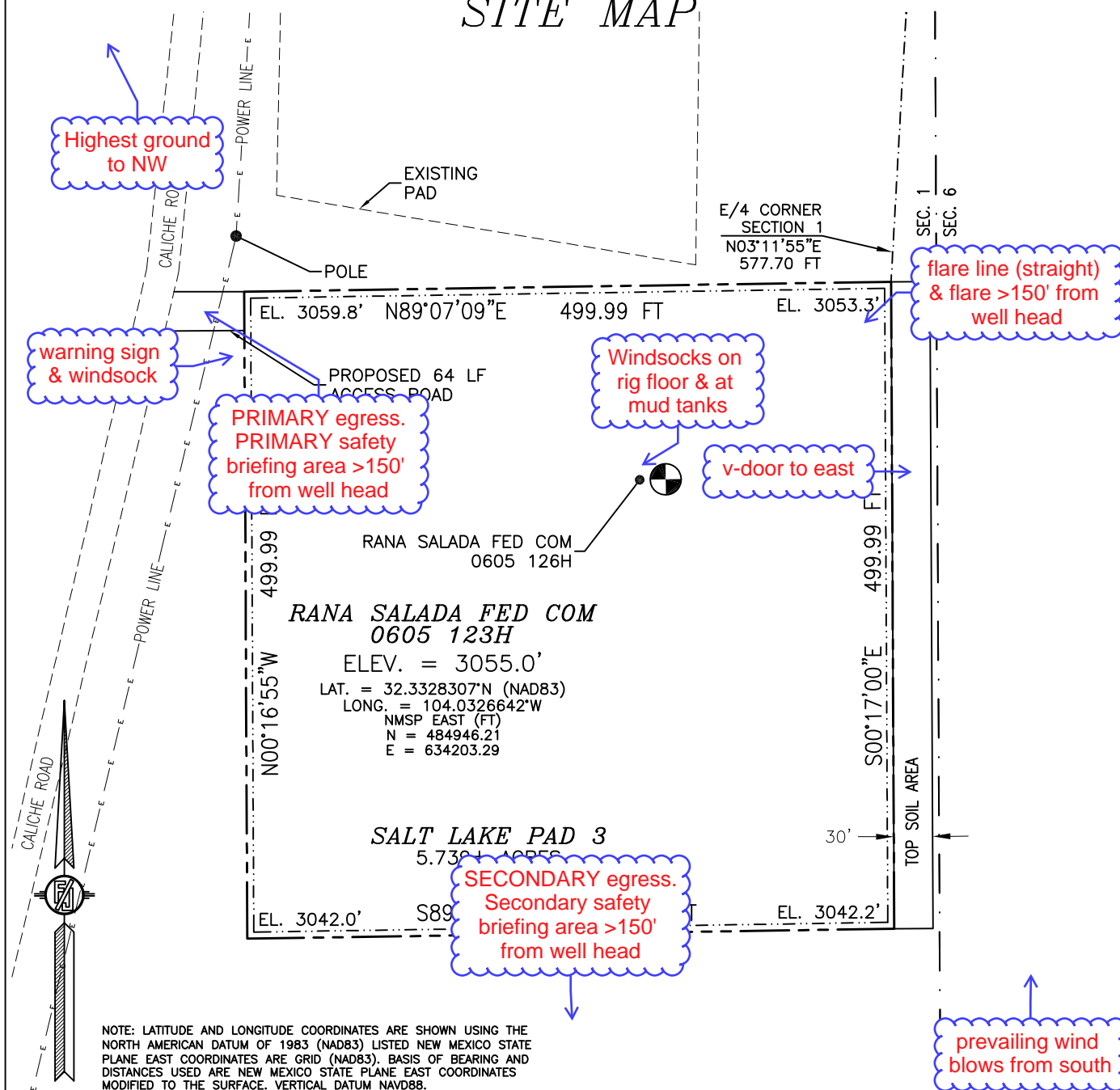
Lifeguard (Albuquerque) (888) 866-7256

Veterinarians

Desert Willow Veterinary Services (Carlsbad) (575) 885-3399

Animal Care Center (Carlsbad) (575) 885-5352

SECTION 1, TOWNSHIP 23 SOUTH, RANGE 28 EAST, N.M.P.M.
EDDY COUNTY, STATE OF NEW MEXICO
SITE MAP



012 60 120 240

SCALE 1" = 120'

DIRECTIONS TO LOCATION

FROM SR 31 (POTASH MINES ROAD) AND CR 605 (REFINERY ROAD) GO NORTH ON CR 605 APPROX. 0.4 OF A MILE. TURN RIGHT (EAST) ON CALICHE ROAD AND GO EAST AND NORTHEAST APPROX. 0.2 OF A MILE TO A "Y" IN ROAD. TURN LEFT (NORTH) AND GO NORTH APPROX. 0.47 OF A MILE, THEN EAST 64' TO THE NORTHWEST CORNER FOR THIS LOCATION.

I, FILIMON F. JARAMILLO, A NEW MEXICO LICENSED PROFESSIONAL SURVEYOR, CERTIFY THAT I DIRECTED AND AM RESPONSIBLE FOR THIS SURVEY, THAT THIS SURVEY IS THE BEST OF MY KNOWLEDGE AND BELIEFS AND THAT I HAVE MET THE MINIMUM STANDARDS FOR SURVEYING IN NEW MEXICO.

FILIMON F. JARAMILLO, LICENSED SURVEYOR

MADRON PROFESSIONAL SURVEYING, INC.

301 SOUTH CANAL
(575) 234-3341

NOVO OIL & GAS NORTHERN DELAWARE, LLC
RANA SALADA FED COM 0605 123H
LOCATED 1942 FT. FROM THE SOUTH LINE
AND 210 FT. FROM THE EAST LINE OF
SECTION 1, TOWNSHIP 23 SOUTH,
RANGE 28 EAST, N.M.P.M.
EDDY COUNTY, STATE OF NEW MEXICO

MARCH 9, 2022

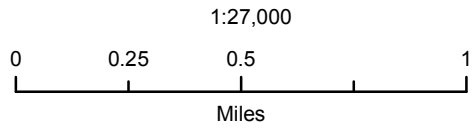
SURVEY NO. 6149A

CARLSBAD, NEW MEXICO

Novo Oil and Gas Northern Delaware

Rana Salada Fed Com 0605
Salt Lake Pad 3
H₂S Contingency Plan:
Radius Map

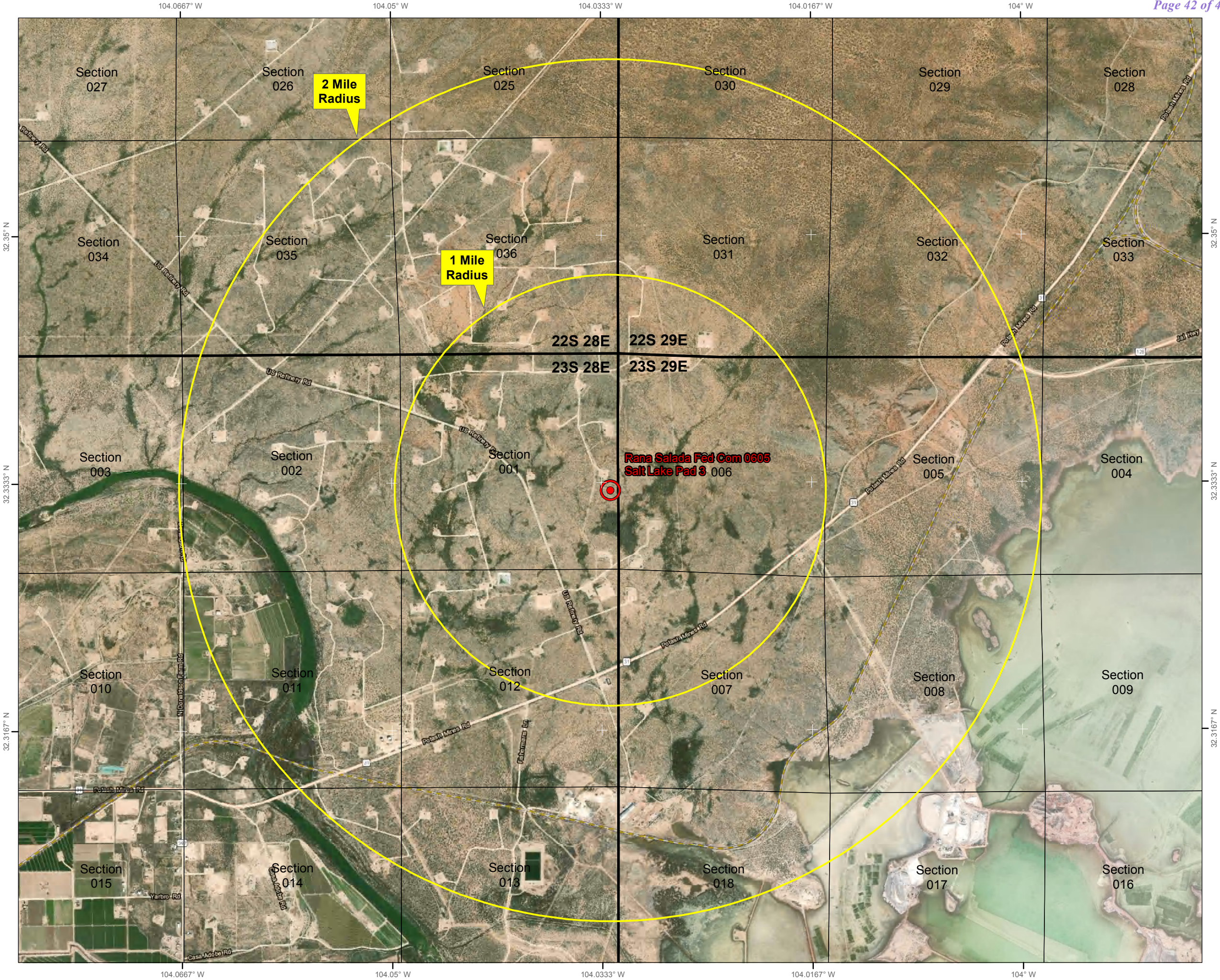
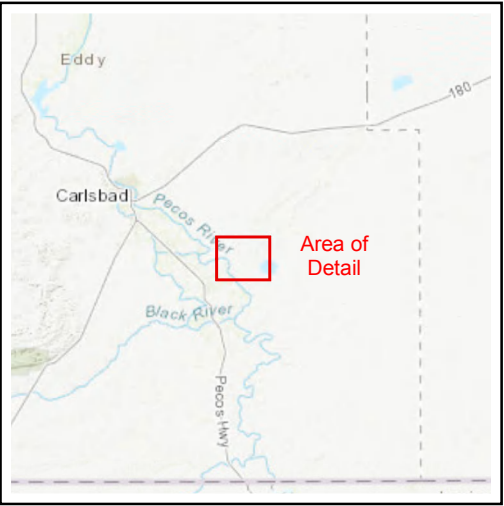
Section 1, Township 23S, Range 28E
Eddy County, New Mexico

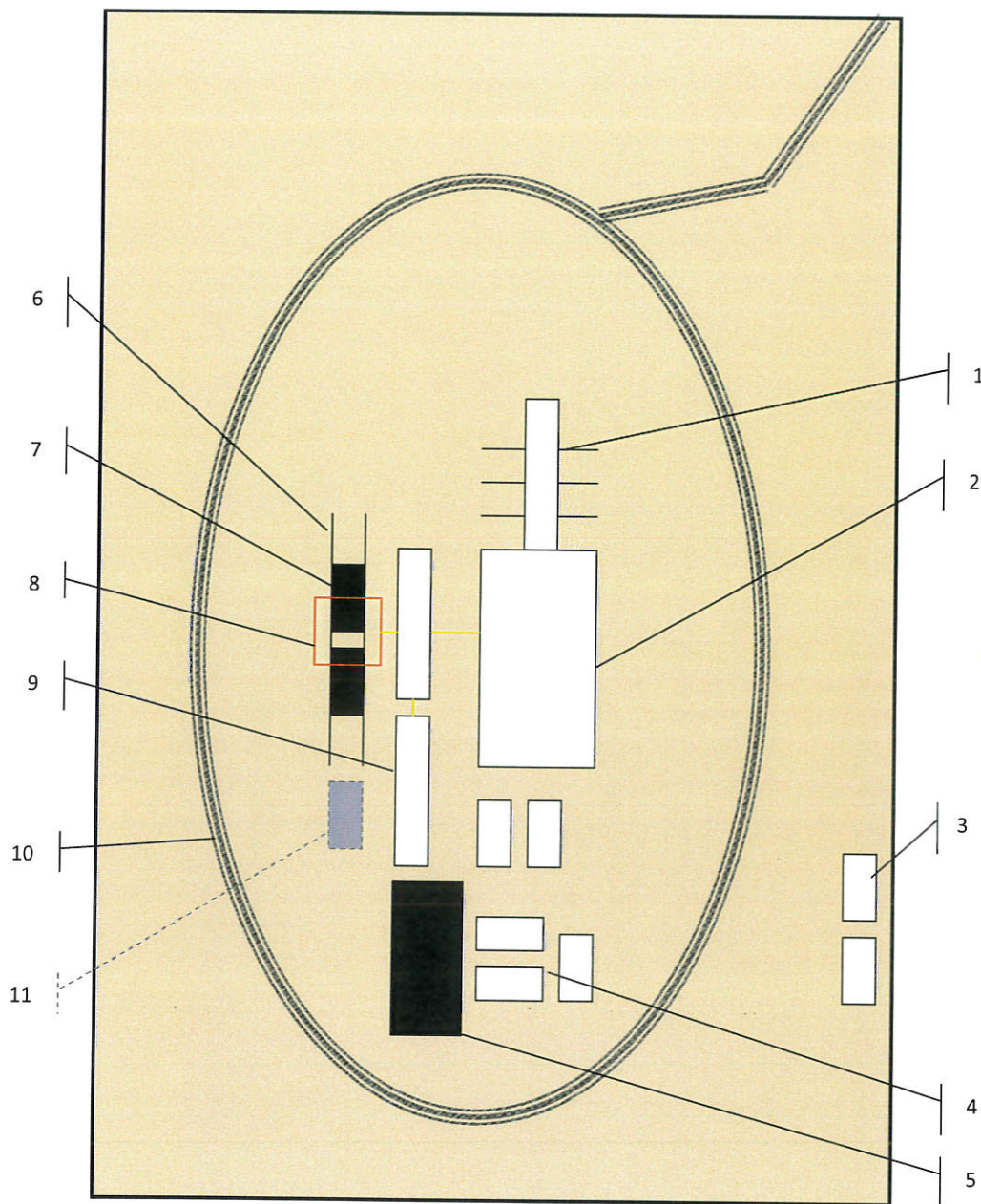


NAD 1983 New Mexico State Plane East
FIPS 3001 Feet



Prepared by Permits West, Inc., August 5, 2019
for Novo Oil and Gas Northern Delaware, LLC





Schematic Closed Loop Drilling Rig*

1. Pipe Rack
2. Drill Rig
3. House Trailers/ Offices
4. Generator/Fuel/Storage
5. Overflow-Frac Tank
6. Skids
7. Roll Offs
8. Hopper or Centrifuge
9. Mud Tanks
10. Loop Drive
11. Generator (only for use with centrifuge)

*Not drawn to scale: Closed loop system requires at least 30 feet beyond mud tanks. Ideally 60 feet would be available

PERMITS WEST, INC.
 PROVIDING PERMITS for LAND USERS
 37Verano Loop, Santa Fe, New Mexico 87508 (505) 466-8120

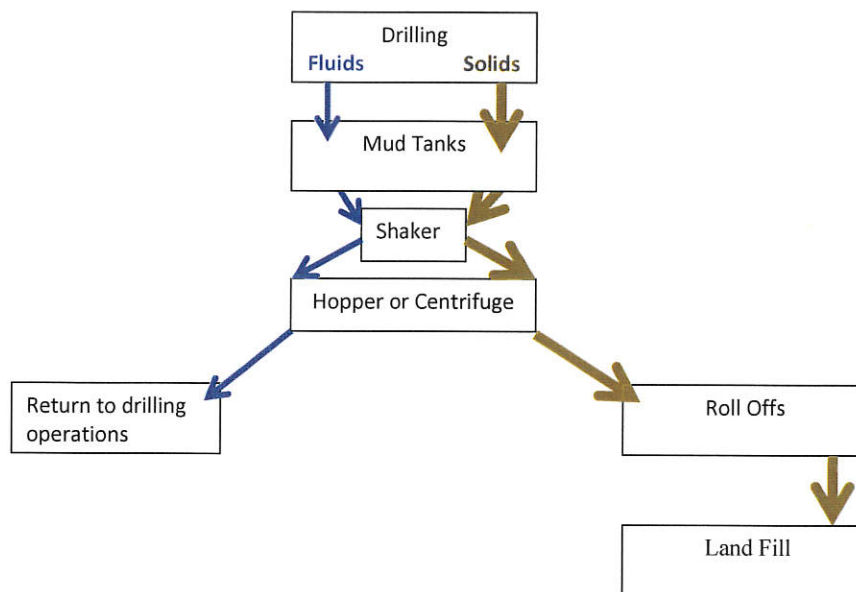


Above: Centrifugal Closed Loop System



Closed Loop Drilling System: Mud tanks to right (1)
 Hopper in air to settle out solids (2)
 Water return pipe (3)
 Shaker between hopper and mud tanks (4)
 Roll offs on skids (5)

Flow Chart for Drilling Fluids and Solids



Photos Courtesy of Gandy Corporation Oil
 Field Service

PERMITS WEST, INC.
 PROVIDING PERMITS for LAND USERS
 37Verano Loop, Santa Fe, New Mexico 87508 (505) 466-8120

District I

1625 N. French Dr., Hobbs, NM 88240
 Phone:(575) 393-6161 Fax:(575) 393-0720

District II

811 S. First St., Artesia, NM 88210
 Phone:(575) 748-1283 Fax:(575) 748-9720

District III

1000 Rio Brazos Rd., Aztec, NM 87410
 Phone:(505) 334-6178 Fax:(505) 334-6170

District IV

1220 S. St Francis Dr., Santa Fe, NM 87505
 Phone:(505) 476-3470 Fax:(505) 476-3462

State of New Mexico
Energy, Minerals and Natural Resources
Oil Conservation Division
1220 S. St Francis Dr.
Santa Fe, NM 87505

CONDITIONS

Action 166811

CONDITIONS

Operator: NOVO OIL & GAS NORTHERN DELAWARE, LLC 1001 West Wilshire Blvd Oklahoma City, OK 73116	OGRID: 372920
	Action Number: 166811
	Action Type: [C-101] BLM - Federal/Indian Land Lease (Form 3160-3)

CONDITIONS

Created By	Condition	Condition Date
kpickford	Will require a administrative order for non-standard location prior to placing the well on production	12/19/2022
kpickford	Notify OCD 24 hours prior to casing & cement	12/19/2022
kpickford	Will require a File As Drilled C-102 and a Directional Survey with the C-104	12/19/2022
kpickford	Once the well is spud, to prevent ground water contamination through whole or partial conduits from the surface, the operator shall drill without interruption through the fresh water zone or zones and shall immediately set in cement the water protection string	12/19/2022
kpickford	Cement is required to circulate on both surface and intermediate1 strings of casing	12/19/2022
kpickford	Oil base muds are not to be used until fresh water zones are cased and cemented providing isolation from the oil or diesel. This includes synthetic oils. Oil based mud, drilling fluids and solids must be contained in a steel closed loop system	12/19/2022