

District I
1625 N. French Dr., Hobbs, NM 88240
Phone: (575) 393-6161 Fax: (575) 393-0720
District II
811 S. First St., Artesia, NM 88210
Phone: (575) 748-1283 Fax: (575) 748-9720
District III
1000 Rio Brazos Road, Aztec, NM 87410
Phone: (505) 334-6178 Fax: (505) 334-6170
District IV
1220 S. St. Francis Dr., Santa Fe, NM 87505
Phone: (505) 476-3460 Fax: (505) 476-3462

State of New Mexico
Energy, Minerals & Natural Resources Department
OIL CONSERVATION DIVISION
1220 South St. Francis Dr.
Santa Fe, NM 87505

Form C-102
Revised August 1, 2011
Submit one copy to appropriate
District Office

☐ AMENDED REPORT

WELL LOCATION AND ACREAGE DEDICATION PLAT

¹ API Number 30-025-46757	² Pool Code 5695	³ Pool Name BILBREY BASIN;BONE SPRING
⁴ Property Code 326979	⁵ Property Name MOZZARELLA FED COM	⁶ Well Number 603H
⁷ OGRID No. 372165	⁸ Operator Name CENTENNIAL RESOURCE PRODUCTION, LLC	⁹ Elevation 3703.2'

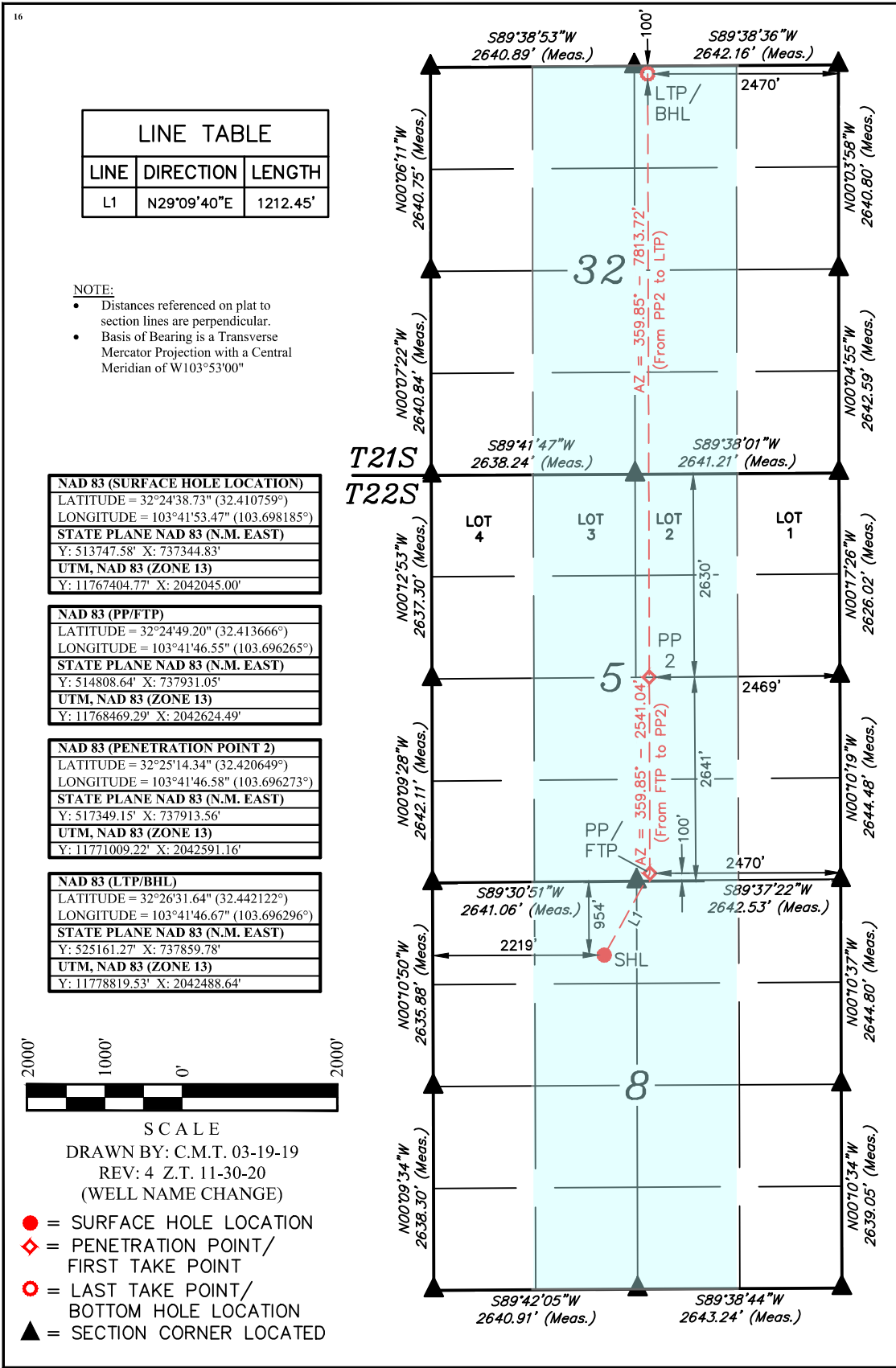
¹⁰ Surface Location

UL or lot no. C	Section 8	Township 22S	Range 32E	Lot Idn	Feet from the 954	North/South line NORTH	Feet from the 2219	East/West line WEST	County LEA
--------------------	--------------	-----------------	--------------	---------	----------------------	---------------------------	-----------------------	------------------------	---------------

¹¹ Bottom Hole Location If Different From Surface

UL or lot no. B	Section 32	Township 21S	Range 32E	Lot Idn	Feet from the 100	North/South line NORTH	Feet from the 2470	East/West line EAST	County LEA
¹² Dedicated Acres 639.34	¹³ Joint or Infill	¹⁴ Consolidation Code	¹⁵ Order No.						

No allowable will be assigned to this completion until all interests have been consolidated or a non-standard unit has been approved by the division.



WELL LOCATION AND ACREAGE DEDICATION PLAT

¹ API Number 30-025-46757	² Pool Code 98313	³ Pool Name WC-025 G-09 S213232A;UPR WOLFCAMP
⁴ Property Code 326979	⁵ Property Name MOZZARELLA FED COM	⁶ Well Number 603H
⁷ GRID No. 372165	⁸ Operator Name CENTENNIAL RESOURCE PRODUCTION, LLC	⁹ Elevation 3703.2'

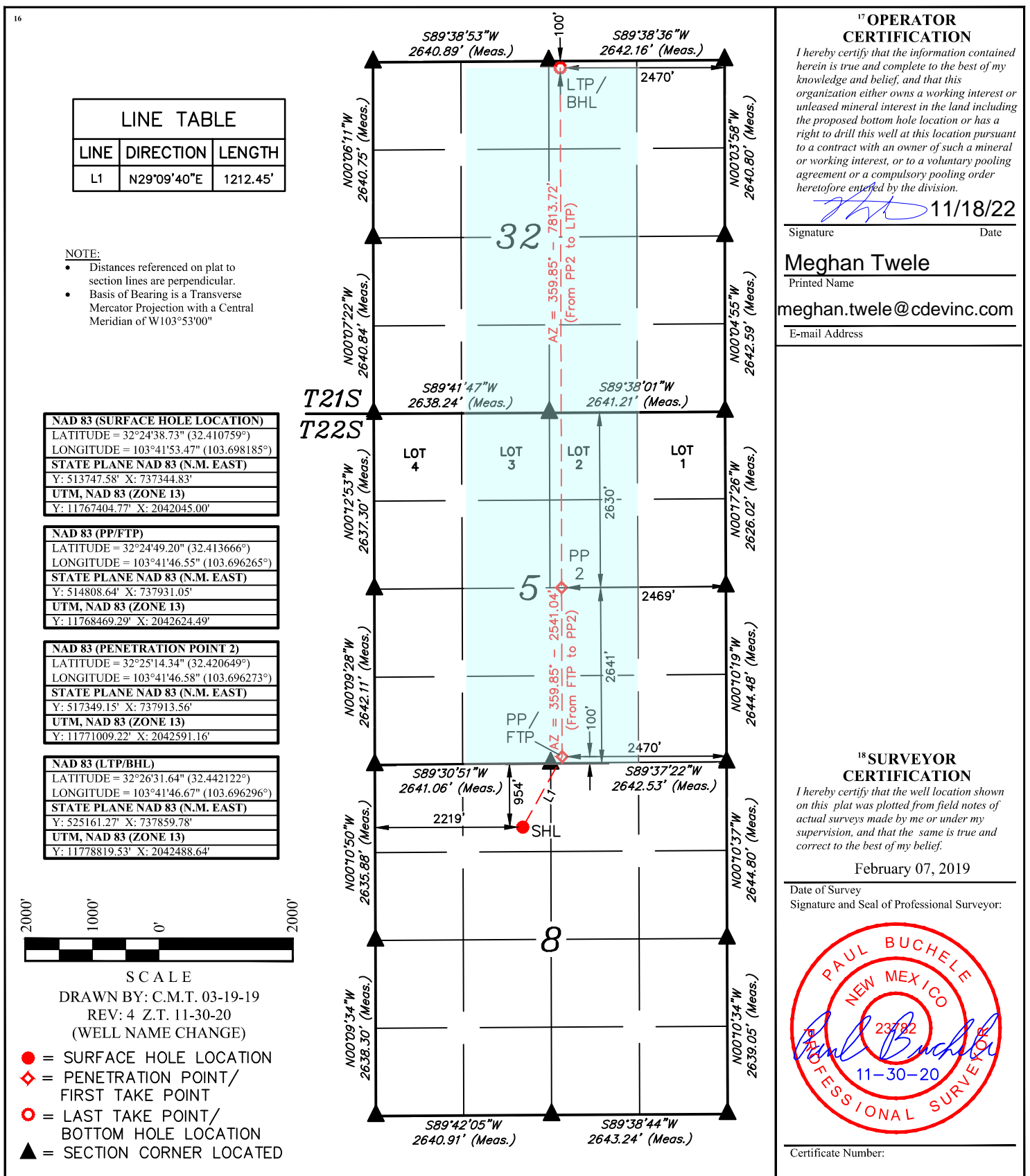
¹⁰Surface Location

UL or lot no. C	Section 8	Township 22S	Range 32E	Lot Idn	Feet from the 954	North/South line NORTH	Feet from the 2219	East/West line WEST	County LEA
--------------------	--------------	-----------------	--------------	---------	----------------------	---------------------------	-----------------------	------------------------	---------------

" Bottom Hole Location If Different From Surface

UL or lot no. B	Section 32	Township 21S	Range 32E	Lot Idn	Feet from the 100	North/South line NORTH	Feet from the 2470	East/West line EAST	County LEA
¹² Dedicated Acres 639.34		¹³ Joint or Infill		¹⁴ Consolidation Code		¹⁵ Order No.			

No allowable will be assigned to this completion until all interests have been consolidated or a non-standard unit has been approved by the division.



District I
1625 N. French Dr., Hobbs, NM 88240
Phone:(575) 393-6161 Fax:(575) 393-0720
District II
811 S. First St., Artesia, NM 88210
Phone:(575) 748-1283 Fax:(575) 748-9720
District III
1000 Rio Brazos Rd., Aztec, NM 87410
Phone:(505) 334-6178 Fax:(505) 334-6170
District IV
1220 S. St Francis Dr., Santa Fe, NM 87505
Phone:(505) 476-3470 Fax:(505) 476-3462

State of New Mexico
Energy, Minerals and Natural Resources
Oil Conservation Division
1220 S. St Francis Dr.
Santa Fe, NM 87505

CONDITIONS

Action 169025

CONDITIONS

Operator: CENTENNIAL RESOURCE PRODUCTION, LLC 1001 17th Street, Suite 1800 Denver, CO 80202	OGRID: 372165
	Action Number: 169025
	Action Type: [C-102] Well Location & Acreage Plat (C-102)

CONDITIONS

Created By	Condition	Condition Date
pkautz	None	12/23/2022