

Form 3160-3
(June 2015)FORM APPROVED
OMB No. 1004-0137
Expires: January 31, 2018

UNITED STATES
DEPARTMENT OF THE INTERIOR
BUREAU OF LAND MANAGEMENT
APPLICATION FOR PERMIT TO DRILL OR REENTER

1a. Type of work: <input type="checkbox"/> DRILL <input type="checkbox"/> REENTER 1b. Type of Well: <input type="checkbox"/> Oil Well <input type="checkbox"/> Gas Well <input type="checkbox"/> Other 1c. Type of Completion: <input type="checkbox"/> Hydraulic Fracturing <input type="checkbox"/> Single Zone <input type="checkbox"/> Multiple Zone		5. Lease Serial No. 6. If Indian, Allottee or Tribe Name 7. If Unit or CA Agreement, Name and No. 8. Lease Name and Well No. <div style="text-align: center; font-weight: bold; font-size: 1.2em;">[316706]</div>
2. Name of Operator <div style="text-align: center; font-weight: bold; font-size: 1.2em;">[12361]</div>		9. API Well No. 30-025-50917
3a. Address	3b. Phone No. (include area code)	10. Field and Pool, or Exploratory [98264]
4. Location of Well (Report location clearly and in accordance with any State requirements. *) At surface At proposed prod. zone		11. Sec., T. R. M. or Blk. and Survey or Area
14. Distance in miles and direction from nearest town or post office*		12. County or Parish 13. State
15. Distance from proposed* location to nearest property or lease line, ft. (Also to nearest drig. unit line, if any)	16. No of acres in lease	17. Spacing Unit dedicated to this well
18. Distance from proposed location* to nearest well, drilling, completed, applied for, on this lease, ft.	19. Proposed Depth	20. BLM/BIA Bond No. in file
21. Elevations (Show whether DF, KDB, RT, GL, etc.)	22. Approximate date work will start*	23. Estimated duration
24. Attachments		

The following, completed in accordance with the requirements of Onshore Oil and Gas Order No. 1, and the Hydraulic Fracturing rule per 43 CFR 3162.3-3 (as applicable)

- | | |
|---|---|
| 1. Well plat certified by a registered surveyor.
2. A Drilling Plan.
3. A Surface Use Plan (if the location is on National Forest System Lands, the SUPO must be filed with the appropriate Forest Service Office). | 4. Bond to cover the operations unless covered by an existing bond on file (see Item 20 above).
5. Operator certification.
6. Such other site specific information and/or plans as may be requested by the BLM. |
|---|---|

25. Signature	Name (Printed/Typed)	Date
Title		
Approved by (Signature)	Name (Printed/Typed)	Date
Title		
Office		

Application approval does not warrant or certify that the applicant holds legal or equitable title to those rights in the subject lease which would entitle the applicant to conduct operations thereon.
 Conditions of approval, if any, are attached.

Title 18 U.S.C. Section 1001 and Title 43 U.S.C. Section 1212, make it a crime for any person knowingly and willfully to make to any department or agency of the United States any false, fictitious or fraudulent statements or representations as to any matter within its jurisdiction.

NGMP Rec 12/08/2022

SL

(Continued on page 2)



Approval Date: 12/14/2020

KZ
01/04/2023

*(Instructions on page 2)

District I
1625 N. French Dr., Hobbs, NM 88240
Phone: (575) 393-6161 Fax: (575) 393-0720
District II
811 S. First St., Artesia, NM 88210
Phone: (575) 748-1283 Fax: (575) 748-9720
District III
1000 Rio Brazos Road, Aztec, NM 87410
Phone: (505) 334-6178 Fax: (505) 334-6170
District IV
1220 S. St. Francis Dr., Santa Fe, NM 87505
Phone: (505) 476-3460 Fax: (505) 476-3462

State of New Mexico
Energy, Minerals & Natural Resources Department
OIL CONSERVATION DIVISION
1220 South St. Francis Dr.
Santa Fe, NM 87505

Form C-102
Revised August 1, 2011
Submit one copy to appropriate
District Office

☐ AMENDED REPORT

WELL LOCATION AND ACREAGE DEDICATION PLAT

¹ API Number 30-025- 50917	² Pool Code 98264	³ Pool Name Bell Lake; Bone Spring, South
⁴ Property Code 316706	⁵ Property Name BELL LAKE UNIT SOUTH	⁶ Well Number 310H
⁷ OGRID No. 12361	⁸ Operator Name KAISER-FRANCIS OIL CO.	⁹ Elevation 3607.4

¹⁰ Surface Location

UL or lot no.	Section	Township	Range	Lot Idn	Feet from the	North/South line	Feet from the	East/West line	County
G	6	24 S	34 E		1430	NORTH	2445	EAST	LEA

¹¹ Bottom Hole Location If Different From Surface

UL or lot no.	Section	Township	Range	Lot Idn	Feet from the	North/South line	Feet from the	East/West line	County
O	7	24 S	34 E		330	SOUTH	2290	EAST	LEA

¹² Dedicated Acres 480	¹³ Joint or Infill	¹⁴ Consolidation Code	¹⁵ Order No. R-14600
---	-------------------------------	----------------------------------	---

No allowable will be assigned to this completion until all interests have been consolidated or a non-standard unit has been approved by the division.

<p>NOTE: LATITUDE AND LONGITUDE COORDINATES ARE SHOWN USING THE NORTH AMERICAN DATUM OF 1983 (NAD83). LISTED NEW MEXICO STATE PLANE EAST COORDINATES ARE GRID (NAD83). BASIS OF BEARING AND DISTANCES USED ARE NEW MEXICO STATE PLANE EAST COORDINATES MODIFIED TO THE SURFACE. VERTICAL DATUM: NAVD83.</p>	<p>¹⁷ OPERATOR CERTIFICATION</p> <p>I hereby certify that the information contained herein is true and complete to the best of my knowledge and belief, and that this organization either owns a working interest or unleased mineral interest in the land including the proposed bottom hole location or has a right to drill this well at this location pursuant to a contract with an owner of such a mineral or working interest, or to a voluntary pooling agreement or a compulsory pooling order heretofore entered by the division.</p> <p><u>Stormi Davis</u> 7/16/20 Signature Date</p> <p>Stormi Davis Printed Name</p> <p><u>ssdavis104@gmail.com</u> E-mail Address</p> <p>¹⁸ SURVEYOR CERTIFICATION</p> <p>I hereby certify that the well location shown on this plat was plotted from field notes of actual surveys made by me or under my supervision, and that the same is true and correct to the best of my belief.</p> <p>DECEMBER 11, 2018 Date of Survey</p> <p><u>FILIMON E. JARAMILLO</u> Signature and Seal of Professional Surveyor</p> <p>Certificate Number: <u>FILIMON E. JARAMILLO, PLS 12797</u> SURVEY NO. 6736</p>
---	--

PECOS DISTRICT DRILLING CONDITIONS OF APPROVAL

OPERATOR'S NAME:	KAISER FRANCIS OIL COMPAN
LEASE NO.:	NMLC0061374A
WELL NAME & NO.:	BELL LAKE UNIT SOUTH 310H
SURFACE HOLE FOOTAGE:	1430'S & 2445'E
BOTTOM HOLE FOOTAGE:	330'/N & 2290'E
LOCATION:	Section 6, T.24 S., R.34 E., NMPM
COUNTY:	Lea County, New Mexico

COA

H2S	<input type="radio"/> Yes	<input checked="" type="radio"/> No	
Potash	<input checked="" type="radio"/> None	<input type="radio"/> Secretary	<input type="radio"/> R-111-P
Cave/Karst Potential	<input checked="" type="radio"/> Low	<input type="radio"/> Medium	<input type="radio"/> High
Cave/Karst Potential	<input type="radio"/> Critical		
Variance	<input type="radio"/> None	<input checked="" type="radio"/> Flex Hose	<input type="radio"/> Other
Wellhead	<input type="radio"/> Conventional	<input checked="" type="radio"/> Multibowl	<input type="radio"/> Both
Other	<input type="checkbox"/> 4 String Area	<input type="checkbox"/> Capitan Reef	<input type="checkbox"/> WIPP
Other	<input type="checkbox"/> Fluid Filled	<input type="checkbox"/> Cement Squeeze	<input type="checkbox"/> Pilot Hole
Special Requirements	<input type="checkbox"/> Water Disposal	<input type="checkbox"/> COM	<input checked="" type="checkbox"/> Unit

A. HYDROGEN SULFIDE

Hydrogen Sulfide (H2S) monitors shall be installed prior to drilling out the surface shoe. If H2S is detected in concentrations greater than 100 ppm, the Hydrogen Sulfide area shall meet Onshore Order 6 requirements, which includes equipment and personnel/public protection items. If Hydrogen Sulfide is encountered, provide measured values and formations to the BLM.

B. CASING

1. The **13-3/8** inch surface casing shall be set at approximately **1400 feet** (a minimum of 25 feet (Lea County) into the Rustler Anhydrite and above the salt) and cemented to the surface.
 - a. If cement does not circulate to the surface, the appropriate BLM office shall be notified and a temperature survey utilizing an electronic type temperature survey with surface log readout will be used or a cement bond log shall be run to verify the top of the cement. Temperature survey will be run a minimum of six hours after pumping cement and ideally between 8-10 hours after completing the cement job.
 - b. Wait on cement (WOC) time for a primary cement job will be a minimum of **8**

- hours** or 500 pounds compressive strength, whichever is greater. (This is to include the lead cement)
- c. Wait on cement (WOC) time for a remedial job will be a minimum of 4 hours after bringing cement to surface or 500 pounds compressive strength, whichever is greater.
 - d. If cement falls back, remedial cementing will be done prior to drilling out that string.
2. The **10-3/4** inch intermediate casing shall be set at **5310 feet**. The minimum required fill of cement behind the **10-3/4** inch intermediate casing is:

Option 1 (Single Stage):

- Cement to surface. If cement does not circulate see B.1.a, c-d above.
Wait on cement (WOC) time for a primary cement job is to include the lead cement slurry due to cave/karst or potash.
3. The **7-5/8** inch second intermediate casing shall be set at **10704 feet**. The minimum required fill of cement behind the **7-5/8** inch intermediate casing is:

Option 1 (Single Stage):

- Cement should tie-back at least **200 feet** into previous casing string. Operator shall provide method of verification.

Option 2:

4. The minimum required fill of cement behind the **5-1/2** inch production casing is:
- Cement should tie-back **100 feet** into the previous casing. Operator shall provide method of verification.

C. PRESSURE CONTROL

1. Variance approved to use flex line from BOP to choke manifold. Manufacturer's specification to be readily available. No external damage to flex line. Flex line to be installed as straight as possible (no hard bends).'

2. **BOP REQUIREMENTS**

Option 1:

- a. Minimum working pressure of the blowout preventer (BOP) and related equipment (BOPE) required for drilling below the surface casing shoe shall be **2000 (2M)** psi.
- b. Minimum working pressure of the blowout preventer (BOP) and related equipment (BOPE) required for drilling below the intermediate casing shoe shall be **10,000 (10M)** psi.

Option 2:

Operator has proposed a multi-bowl wellhead assembly. This assembly will only be tested when installed on the surface casing. Minimum working pressure of the blowout preventer (BOP) and related equipment (BOPE) required for drilling below the surface casing shoe shall be **10,000 (10M)** psi. **Variance is approved to use a 5000 (5M) Annular which shall be tested to 5000 (5M) psi.**

- a. Wellhead shall be installed by manufacturer's representatives, submit documentation with subsequent sundry.
- b. If the welding is performed by a third party, the manufacturer's representative shall monitor the temperature to verify that it does not exceed the maximum temperature of the seal.
- c. Manufacturer representative shall install the test plug for the initial BOP test.
- d. If the cement does not circulate and one inch operations would have been possible with a standard wellhead, the well head shall be cut off, cementing operations performed and another wellhead installed.
- e. Whenever any seal subject to test pressure is broken, all the tests in OOGO2.III.A.2.i must be followed.

D. SPECIAL REQUIREMENT (S)

Unit Wells

The well sign for a unit well shall include the unit number in addition to the surface and bottom hole lease numbers. This also applies to participating area numbers. If a participating area has not been established, the operator can use the general unit designation, but will replace the unit number with the participating area number when the sign is replaced.

Commercial Well Determination

A commercial well determination shall be submitted after production has been established for at least six months. (This is not necessary for secondary recovery unit wells)

GENERAL REQUIREMENTS

The BLM is to be notified in advance for a representative to witness:

- a. Spudding well (minimum of 24 hours)
- b. Setting and/or Cementing of all casing strings (minimum of 4 hours)
- c. BOPE tests (minimum of 4 hours)

☒ Eddy County

Call the Carlsbad Field Office, 620 East Greene St., Carlsbad, NM 88220,
(575) 361-2822

☒ Lea County

Call the Hobbs Field Station, 414 West Taylor, Hobbs NM 88240, (575)
393-3612

1. Unless the production casing has been run and cemented or the well has been properly plugged, the drilling rig shall not be removed from over the hole without prior approval.
 - a. In the event the operator has proposed to drill multiple wells utilizing a skid/walking rig. Operator shall secure the wellbore on the current well, after installing and testing the wellhead, by installing a blind flange of like pressure rating to the wellhead and a pressure gauge that can be monitored while drilling is performed on the other well(s).
 - b. When the operator proposes to set surface casing with Spudder Rig
 - Notify the BLM when moving in and removing the Spudder Rig.
 - Notify the BLM when moving in the 2nd Rig. Rig to be moved in within 90 days of notification that Spudder Rig has left the location.
 - BOP/BOPE test to be conducted per Onshore Oil and Gas Order No. 2 as soon as 2nd Rig is rigged up on well.
2. Floor controls are required for 3M or Greater systems. These controls will be on the rig floor, unobstructed, readily accessible to the driller and will be operational at all times during drilling and/or completion activities. Rig floor is defined as the area immediately around the rotary table; the area immediately above the substructure on which the draw works are located, this does not include the dog house or stairway area.
3. The record of the drilling rate along with the GR/N well log run from TD to surface (horizontal well – vertical portion of hole) shall be submitted to the BLM office as well as all other logs run on the borehole 30 days from completion. If available, a digital copy of the logs is to be submitted in addition to the paper copies. The Rustler top and top and bottom of Salt are to be recorded on the Completion Report.

A. CASING

1. Changes to the approved APD casing program need prior approval if the items substituted are of lesser grade or different casing size or are Non-API. The Operator can exchange the components of the proposal with that of superior strength (i.e. changing from J-55 to N-80, or from 36# to 40#). Changes to the approved cement program need prior approval if the altered cement plan has less volume or strength or if the changes are substantial (i.e. Multistage tool, ECP, etc.). The initial wellhead installed on the well will remain on the well with spools used as needed.
2. Wait on cement (WOC) for Potash Areas: After cementing but before commencing any tests, the casing string shall stand cemented under pressure until both of the following conditions have been met: 1) cement reaches a minimum compressive strength of 500 psi for all cement blends, 2) until cement has been in place at least 24 hours. WOC time will be recorded in the driller's log. The casing integrity test can be done (prior to the cement setting up) immediately after bumping the plug.
3. Wait on cement (WOC) for Water Basin: After cementing but before commencing any tests, the casing string shall stand cemented under pressure until both of the following conditions have been met: 1) cement reaches a minimum compressive strength of 500 psi at the shoe, 2) until cement has been in place at least 8 hours. WOC time will be recorded in the driller's log. See individual casing strings for details regarding lead cement slurry requirements. The casing integrity test can be done (prior to the cement setting up) immediately after bumping the plug.
4. Provide compressive strengths including hours to reach required 500 pounds compressive strength prior to cementing each casing string. Have well specific cement details onsite prior to pumping the cement for each casing string.
5. No pea gravel permitted for remedial or fall back remedial without prior authorization from the BLM engineer.
6. On that portion of any well approved for a 5M BOPE system or greater, a pressure integrity test of each casing shoe shall be performed. Formation at the shoe shall be tested to a minimum of the mud weight equivalent anticipated to control the formation pressure to the next casing depth or at total depth of the well. This test shall be performed before drilling more than 20 feet of new hole.
7. If hardband drill pipe is rotated inside casing, returns will be monitored for metal. If metal is found in samples, drill pipe will be pulled and rubber protectors which have a larger diameter than the tool joints of the drill pipe will be installed prior to continuing drilling operations.
8. Whenever a casing string is cemented in the R-111-P potash area, the NMOCD requirements shall be followed.

B. PRESSURE CONTROL

1. All blowout preventer (BOP) and related equipment (BOPE) shall comply with well control requirements as described in Onshore Oil and Gas Order No. 2 and API RP 53 Sec. 17.
2. If a variance is approved for a flexible hose to be installed from the BOP to the choke manifold, the following requirements apply: The flex line must meet the requirements of API 16C. Check condition of flexible line from BOP to choke manifold, replace if exterior is damaged or if line fails test. Line to be as straight as possible with no hard bends and is to be anchored according to Manufacturer's requirements. The flexible hose can be exchanged with a hose of equal size and equal or greater pressure rating. Anchor requirements, specification sheet and hydrostatic pressure test certification matching the hose in service, to be onsite for review. These documents shall be posted in the company man's trailer and on the rig floor.
3. 5M or higher system requires an HCR valve, remote kill line and annular to match. The remote kill line is to be installed prior to testing the system and tested to stack pressure.
4. If the operator has proposed a multi-bowl wellhead assembly in the APD. The following requirements must be met:
 - a. Wellhead shall be installed by manufacturer's representatives, submit documentation with subsequent sundry.
 - b. If the welding is performed by a third party, the manufacturer's representative shall monitor the temperature to verify that it does not exceed the maximum temperature of the seal.
 - c. Manufacturer representative shall install the test plug for the initial BOP test.
 - d. Whenever any seal subject to test pressure is broken, all the tests in OOGO2.III.A.2.i must be followed.
 - e. If the cement does not circulate and one inch operations would have been possible with a standard wellhead, the well head shall be cut off, cementing operations performed and another wellhead installed.
5. The appropriate BLM office shall be notified a minimum of 4 hours in advance for a representative to witness the tests.
 - a. In a water basin, for all casing strings utilizing slips, these are to be set as soon as the crew and rig are ready and any fallback cement remediation has been done. The casing cut-off and BOP installation can be initiated four hours after installing the slips, which will be approximately six hours after bumping the plug. For those casing strings not using slips, the minimum wait time before cut-off is eight hours after bumping the plug. BOP/BOPE testing can begin after cut-off or once cement reaches 500 psi compressive strength (including lead when specified), whichever is greater. However, if the float does not

hold, cut-off cannot be initiated until cement reaches 500 psi compressive strength (including lead when specified).

- b. In potash areas, for all casing strings utilizing slips, these are to be set as soon as the crew and rig are ready and any fallback cement remediation has been done. For all casing strings, casing cut-off and BOP installation can be initiated at twelve hours after bumping the plug. However, **no tests** shall commence until the cement has had a minimum of 24 hours setup time, except the casing pressure test can be initiated immediately after bumping the plug (only applies to single stage cement jobs).
- c. The tests shall be done by an independent service company utilizing a test plug not a cup or J-packer. The operator also has the option of utilizing an independent tester to test without a plug (i.e. against the casing) pursuant to Onshore Order 2 with the pressure not to exceed 70% of the burst rating for the casing. Any test against the casing must meet the WOC time for water basin (8 hours) or potash (24 hours) or 500 pounds compressive strength, whichever is greater, prior to initiating the test (see casing segment as lead cement may be critical item).
- d. The test shall be run on a 5000 psi chart for a 2-3M BOP/BOP, on a 10000 psi chart for a 5M BOP/BOPE and on a 15000 psi chart for a 10M BOP/BOPE. If a linear chart is used, it shall be a one hour chart. A circular chart shall have a maximum 2 hour clock. If a twelve hour or twenty-four hour chart is used, tester shall make a notation that it is run with a two hour clock.
- e. The results of the test shall be reported to the appropriate BLM office.
- f. All tests are required to be recorded on a calibrated test chart. A copy of the BOP/BOPE test chart and a copy of independent service company test will be submitted to the appropriate BLM office.
- g. The BOP/BOPE test shall include a low pressure test from 250 to 300 psi. The test will be held for a minimum of 10 minutes if test is done with a test plug and 30 minutes without a test plug. This test shall be performed prior to the test at full stack pressure.
- h. BOP/BOPE must be tested by an independent service company within 500 feet of the top of the Wolfcamp formation if the time between the setting of the intermediate casing and reaching this depth exceeds 20 days. This test does not exclude the test prior to drilling out the casing shoe as per Onshore Order No. 2.

C. DRILLING MUD

Mud system monitoring equipment, with derrick floor indicators and visual and audio alarms, shall be operating before drilling into the Wolfcamp formation, and shall be used until production casing is run and cemented.

D. WASTE MATERIAL AND FLUIDS

All waste (i.e. drilling fluids, trash, salts, chemicals, sewage, gray water, etc.) created as a result of drilling operations and completion operations shall be safely contained and disposed of properly at a waste disposal facility. No waste material or fluid shall be disposed of on the well location or surrounding area.

Porto-johns and trash containers will be on-location during fracturing operations or any other crew-intensive operations.

RI12092020



U.S. Department of the Interior
BUREAU OF LAND MANAGEMENT

Application Data Report

12/18/2020

APD ID: 10400059133

Submission Date: 07/17/2020

Highlighted data
reflects the most
recent changes

Operator Name: KAISER FRANCIS OIL COMPANY

Well Name: BELL LAKE UNIT SOUTH

Well Number: 310H

[Show Final Text](#)

Well Type: OIL WELL

Well Work Type: Drill

Section 1 - General

APD ID: 10400059133

Tie to previous NOS? N

Submission Date: 07/17/2020

BLM Office: CARLSBAD

User: Stormi Davis

Title: Regulatory Analyst

Federal/Indian APD: FED

Is the first lease penetrated for production Federal or Indian? FED

Lease number: NMLC0061374A

Lease Acres:

Surface access agreement in place?

Allotted?

Reservation:

Agreement in place? YES

Federal or Indian agreement: FEDERAL

Agreement number: NMNM068292X

Agreement name: BELL LAKE

Keep application confidential? Y

Permitting Agent? YES

APD Operator: KAISER FRANCIS OIL COMPANY

Operator letter of designation:

Operator Info

Operator Organization Name: KAISER FRANCIS OIL COMPANY

Operator Address: 6733 S. Yale Ave.

Zip: 74121

Operator PO Box: PO Box 21468

Operator City: Tulsa

State: OK

Operator Phone: (918)491-0000

Operator Internet Address:

Section 2 - Well Information

Well in Master Development Plan? NO

Master Development Plan name:

Well in Master SUPO? NO

Master SUPO name:

Well in Master Drilling Plan? NO

Master Drilling Plan name:

Well Name: BELL LAKE UNIT SOUTH

Well Number: 310H

Well API Number:

Field/Pool or Exploratory? Field and Pool

Field Name: BELL LAKE

Pool Name: BONE SPRING,
SOUTH

Is the proposed well in an area containing other mineral resources? NATURAL GAS,OIL

Operator Name: KAISER FRANCIS OIL COMPANY

Well Name: BELL LAKE UNIT SOUTH

Well Number: 310H

Is the proposed well in an area containing other mineral resources? NATURAL GAS,OIL

Is the proposed well in a Helium production area? N

Use Existing Well Pad? N

New surface disturbance?

Type of Well Pad: MULTIPLE WELL

Multiple Well Pad Name:

Number: 8

Well Class: HORIZONTAL

SOUTH BELL LAKE UNIT

Number of Legs: 1

Well Work Type: Drill

Well Type: OIL WELL

Describe Well Type:

Well sub-Type: EXPLORATORY (WILDCAT)

Describe sub-type:

Distance to town: 20 Miles

Distance to nearest well: 30 FT

Distance to lease line: 1210 FT

Reservoir well spacing assigned acres Measurement: 480 Acres

Well plat: BELL_LAKE_UNIT_SOUTH_310H_C102_20200716072441.pdf

BLUS_310H_Pymt_20200717095612.pdf

Well work start Date: 10/01/2020

Duration: 40 DAYS

Section 3 - Well Location Table

Survey Type: RECTANGULAR

Describe Survey Type:

Datum: NAD83

Vertical Datum: NAVD88

Survey number: 6736

Reference Datum: GROUND LEVEL

Wellbore	NS-Foot	NS Indicator	EW-Foot	EW Indicator	Twsp	Range	Section	Aliquot/Lot/Tract	Latitude	Longitude	County	State	Meridian	Lease Type	Lease Number	Elevation	MD	TVD	Will this well produce from this lease?
PPP Leg #1-1	1320	FNL	2280	FEL	24S	34E	7	Aliquot SWNE	32.23571	-103.50778	LEA	NEW MEXI CO	NEW MEXI CO	F	NMNM 100594	-7943	15824	11550	Y
PPP Leg #1-2	0	FNL	2230	FEL	24S	34E	7	Aliquot NWNE	32.23935	-103.50774	LEA	NEW MEXI CO	NEW MEXI CO	F	NMLC0 061374 A	-7943	14504	11550	Y



Your payment has been submitted to Pay.gov and the details are below. If you have any questions regarding this payment, please contact BLM OC CBS Customer Service at (303) 236-6795 or BLM_OC_CBS_Customer_Service@blm.gov.

Application Name: BLM Oil and Gas Online Payment

Pay.gov Tracking ID: 26PFCF6J

Agency Tracking ID: 76017021038

Transaction Type: Sale

Transaction Date: 07/17/2020 11:53:50 AM EDT

Account Holder Name: George B Kaiser

Transaction Amount: \$10,230.00

Card Type: Visa

Card Number: *****0061

Company: Kaiser-Francis Oil Company

APD IDs: 10400059133

Lease Numbers: NMLC0061374A

Well Numbers: 310H

Note: You will need your Pay.gov Tracking ID to complete your APD transaction in AFMSS II. Please ensure you write this number down upon completion of payment.

THIS IS AN AUTOMATED MESSAGE. PLEASE DO NOT REPLY.

[Quoted text hidden]



U.S. Department of the Interior
BUREAU OF LAND MANAGEMENT

Drilling Plan Data Report

12/18/2020

APD ID: 10400059133

Submission Date: 07/17/2020

Highlighted data
reflects the most
recent changes

Operator Name: KAISER FRANCIS OIL COMPANY

Well Name: BELL LAKE UNIT SOUTH

Well Number: 310H

[Show Final Text](#)

Well Type: OIL WELL

Well Work Type: Drill

Section 1 - Geologic Formations

Formation ID	Formation Name	Elevation	True Vertical Depth	Measured Depth	Lithologies	Mineral Resources	Producing Formation
788973	---	3607	0	0	OTHER : Surface	NONE	N
788974	RUSTLER	2254	1353	1353	SANDSTONE	NONE	N
788975	SALADO	1874	1733	1733	SALT	NONE	N
788976	TOP SALT	1571	2036	2036	SALT	NONE	N
788977	BASE OF SALT	-1415	5022	5022	SALT	NONE	N
788978	LAMAR	-1615	5222	5222	SANDSTONE	NATURAL GAS, OIL	N
788979	BELL CANYON	-1712	5319	5319	SANDSTONE	NATURAL GAS, OIL	N
788980	CHERRY CANYON	-2562	6169	6169	SANDSTONE	NATURAL GAS, OIL	N
788981	BRUSHY CANYON	-4010	7617	7617	SANDSTONE	NATURAL GAS, OIL	N
788982	BONE SPRING	-5160	8767	8767	LIMESTONE	NATURAL GAS, OIL	N
788983	AVALON SAND	-5332	8939	8939	SANDSTONE	NATURAL GAS, OIL	N
788984	BONE SPRING 1ST	-6302	9909	9909	SANDSTONE	NATURAL GAS, OIL	N
789014	BONE SPRING 2ND	-6870	10477	10477	SANDSTONE	NATURAL GAS, OIL	N
789015	BONE SPRING LIME	-7337	10944	10944	LIMESTONE	NATURAL GAS, OIL	N
789016	BONE SPRING 3RD	-7797	11404	11404	SANDSTONE	NATURAL GAS, OIL	Y

Section 2 - Blowout Prevention

Operator Name: KAISER FRANCIS OIL COMPANY**Well Name:** BELL LAKE UNIT SOUTH**Well Number:** 310H**Pressure Rating (PSI):** 5M**Rating Depth:** 13000

Equipment: A 5M system will be installed according to Onshore Order #2 consisting of an Annular Preventer, BOP with two rams, a blind ram and safety valves and appropriate handles located on the rig floor. BOP will be equipped with 2 side outlets (choke side shall be a minimum 3 line, and kill side will be a minimum 2 line). Kill line will be installed with (2) valves and a check valve (2 min) of proper pressure rating for the system. Remote kill line (2 min) will be installed and ran to the outer edge of the substructure and be unobstructed. A manual and hydraulic valve (3 min) will be installed on the choke line, 3 chokes will be used with one being remotely controlled. Fill up line will be installed above the uppermost preventer. Pressure gauge of proper pressure rating will be installed on choke manifold. Upper and lower kelly cocks will be utilized with handles readily available in plain sight. A float sub will be available at all times. All connections subject to well pressure will be flanged, welded, or clamped.

Requesting Variance? YES**Variance request:** Flex Hose Variance

Testing Procedure: BOP/BOPE will be tested by an independent service company to 250 psi low and the high pressure indicated above per Onshore Order 2 requirements. The System may be upgraded to a higher pressure but still tested to the working pressure listed in the table above. If the system is upgraded all of the components installed will be functional and tested.

Choke Diagram Attachment:

BLUS_310H_Choke_Manifold_20200716074756.pdf

BOP Diagram Attachment:

Cactus_Flex_Hose_16C_Certification_20200206080210.pdf

BLUS_310H_BOP_20200716074828.pdf

BLUS_310H_Wellhead_Diagram_20200716074828.pdf

Section 3 - Casing

Casing ID	String Type	Hole Size	Csg Size	Condition	Standard	Tapered String	Top Set MD	Bottom Set MD	Top Set TVD	Bottom Set TVD	Top Set MSL	Bottom Set MSL	Calculated casing length MD	Grade	Weight	Joint Type	Collapse SF	Burst SF	Joint SF Type	Joint SF	Body SF Type	Body SF
1	SURFACE	17.5	13.375	NEW	API	N	0	1400	0	1400	3607	2207	1400	J-55	54.5	BUTT	2.4	4.8	DRY	5.5	DRY	8.2
2	INTERMEDIATE	12.25	10.75	NEW	API	N	0	5310	0	5300		-1693	5310	HCP-110	45.5	BUTT	1.2	2.1	DRY	4.5	DRY	4.4
3	INTERMEDIATE	9.875	7.625	NEW	API	N	0	10704	0	10800	3607	-7193	10704	HCP-110	29.7	BUTT	1.3	1.9	DRY	2.4	DRY	3
4	PRODUCTION	6.75	5.5	NEW	API	N	0	19454	0	11550		-7943	19454	P-110	20	OTHER - USS Eagle SFH	1.8	2	DRY	2.8	DRY	3.2

Operator Name: KAISER FRANCIS OIL COMPANY**Well Name:** BELL LAKE UNIT SOUTH**Well Number:** 310H**Casing Attachments**

Casing ID: 1 **String Type:** SURFACE**Inspection Document:****Spec Document:****Tapered String Spec:****Casing Design Assumptions and Worksheet(s):**BLUS_310H_Casing_Assumptions_20200716100236.pdf

Casing ID: 2 **String Type:** INTERMEDIATE**Inspection Document:****Spec Document:****Tapered String Spec:****Casing Design Assumptions and Worksheet(s):**BLUS_310H_Casing_Assumptions_20200716095603.pdf

Casing ID: 3 **String Type:** INTERMEDIATE**Inspection Document:****Spec Document:****Tapered String Spec:****Casing Design Assumptions and Worksheet(s):**BLUS_310H_Casing_Assumptions_20200716100424.pdf

Operator Name: KAISER FRANCIS OIL COMPANY

Well Name: BELL LAKE UNIT SOUTH

Well Number: 310H

Casing Attachments

Casing ID: 4 String Type: PRODUCTION

Inspection Document:

Spec Document:

Tapered String Spec:

Casing Design Assumptions and Worksheet(s):

BLUS_310H_Casing_Assumptions_20200716095714.pdf

5.5_x_20_P110_HP_USS_EAGLE_SFH_Performance_Sheet_20200716095732.pdf

Section 4 - Cement

String Type	Lead/Tail	Stage Tool Depth	Top MD	Bottom MD	Quantity(sx)	Yield	Density	Cu Ft	Excess%	Cement type	Additives
SURFACE	Lead		0	1400	254	1.75	13.5	443	50	Halcem	Poly Flake

INTERMEDIATE	Lead		0	5310	377	2.5	11.9	941	25	Econocem	None
INTERMEDIATE	Tail		0	5310	231	1.33	14.8	308	25	Halcem	None
INTERMEDIATE	Lead		0	1070 4	457	3.52	10.5	1611	25	NeoCem	None
INTERMEDIATE	Tail		0	1070 4	1056	1.2	15.6	1263	25	Halcem	None
PRODUCTION	Lead		9000	1945 4	875	1.22	14.5	1071	20	VersaCem	Halad

Operator Name: KAISER FRANCIS OIL COMPANY**Well Name:** BELL LAKE UNIT SOUTH**Well Number:** 310H**Section 5 - Circulating Medium****Mud System Type:** Closed**Will an air or gas system be Used?** NO**Description of the equipment for the circulating system in accordance with Onshore Order #2:****Diagram of the equipment for the circulating system in accordance with Onshore Order #2:****Describe what will be on location to control well or mitigate other conditions:** Sufficient mud materials to maintain mud properties and meet minimum lost circulation and weight increase requirements will be kept on location at all time.**Describe the mud monitoring system utilized:** PVT/Pason/Visual Monitoring**Circulating Medium Table**

Top Depth	Bottom Depth	Mud Type	Min Weight (lbs/gal)	Max Weight (lbs/gal)	Density (lbs/cu ft)	Gel Strength (lbs/100 sqft)	PH	Viscosity (CP)	Salinity (ppm)	Filtration (cc)	Additional Characteristics
1080 0	1155 0	OIL-BASED MUD	10	12							
5300	1080 0	WATER-BASED MUD	8.8	9.2							
1400	5300	OTHER : Diesel- Brine Emulsion	8.7	8.9							
0	1400	OTHER : Fresh Water	8.4	9							

Section 6 - Test, Logging, Coring**List of production tests including testing procedures, equipment and safety measures:**

Top of cement on production casing will be determined by calculation.

List of open and cased hole logs run in the well:

DIRECTIONAL SURVEY, GAMMA RAY LOG, MUD LOG/GEOLOGIC LITHOLOGY LOG, MUD LOG/GEOLOGICAL LITHOLOGY LOG,

Coring operation description for the well:

None planned

Operator Name: KAISER FRANCIS OIL COMPANY**Well Name:** BELL LAKE UNIT SOUTH**Well Number:** 310H

Section 7 - Pressure

Anticipated Bottom Hole Pressure: 7207**Anticipated Surface Pressure:** 4665**Anticipated Bottom Hole Temperature(F):** 199**Anticipated abnormal pressures, temperatures, or potential geologic hazards?** NO**Describe:****Contingency Plans geohazards description:****Contingency Plans geohazards attachment:****Hydrogen Sulfide drilling operations plan required?** YES**Hydrogen sulfide drilling operations plan:**

BLUS_Pad_8_H2S_Contingency_Plan_20200714144720.pdf

Section 8 - Other Information

Proposed horizontal/directional/multi-lateral plan submission:

BLUS_310H_Directional_Plan_20200716101932.pdf

Other proposed operations facets description:

Gas Capture Plan attached

Other proposed operations facets attachment:

Bell_Lake_Unit_South_Pad_8_Gas_Capture_Plan_20200714144748.pdf

Other Variance attachment:

Cactus_Flex_Hose_16C_Certification_20200206081511.pdf

BLUS_310H_Wellhead_Diagram_20200716101519.pdf

**KAISER-FRANCIS OIL COMPANY
HYDROGEN SULFIDE (H₂S) CONTINGENCY PLAN
FOR DRILLING/COMPLETION WORKOVER/FACILITY**

**BELL LAKE UNIT SOUTH Pad 8
SECTION 6 -T24S-R34E
LEA COUNTY, NM**

This well/facility is not expected to have H₂S, but due to the sensitive location, the following is submitted as requested.

TABLE OF CONTENTS

Emergency Response Activation and General Responsibilities	3
Individual Responsibilities During An H ₂ S Release	4
Procedure For Igniting An Uncontrollable Condition	5
Emergency Phone Numbers	6
Protection Of The General Public/Roe	7
Characteristics Of H ₂ S And SO ₂	8
Training	8
Public Relations	8
Maps	

EMERGENCY RESPONSE ACTIVATION AND GENERAL RESPONSIBILITIES**Activation of the Emergency Action Plan**

In the event of any emergency situation, all personnel on location should first ensure that the following items are initiated. After that, they should refer to the appropriate Specific Emergency Guidance sections below for further responsibilities:

1. Notify the senior ranking contract representative on site.
2. Notify Kaiser-Francis representative in charge.
3. Notify civil authorities if the Kaiser-Francis Representative cannot be contacted and the situation dictates.
4. Perform rescue and first aid as required (without jeopardizing additional personnel).

General Responsibilities

In the event of an H₂S emergency, the following plan will be initiated.

- 1) All personnel will immediately evacuate to an up-wind and if possible up-hill "safe area".
- 2) If for any reason a person must enter the hazardous area, they must wear a SCBA (Self contained breathing apparatus).
- 3) Always use the "buddy system".
- 4) Isolate the well/problem if possible.
- 5) Account for all personnel
- 6) Display the proper colors, warning all unsuspecting personnel of the danger at hand
- 7) Contact the Company personnel as soon as possible if not at the location. (use the enclosed call list as instructed)

At this point the company representative will evaluate the situation and coordinate the necessary duties to bring the situation under control, and if necessary, the notification of emergency response agencies and residents.

INDIVIDUAL RESPONSIBILITIES DURING AN H₂S RELEASE

The following procedures and responsibilities will be implemented on activation of the H₂S siren and lights.

All Personnel:

1. On alarm, don escape unit (if available) and report to upwind briefing area.

Rig Manager/Tool Pusher:

1. Check that all personnel are accounted for and their condition.
2. Administer or arrange for first aid treatment, and/or call EMTs as needed.
3. Identify two people best suited to secure well and perform rescue, and instruct them to don SCBA.
4. Notify Contract management and Kaiser-Francis Representative.
5. Remain at the briefing area, assess and monitor personnel and overall situation for hazards or conditions that might warrant a change in the action plan.

Two People Responsible for Shut-in and Rescue:

1. Don SCBA and acquire tools to secure well and perform rescue, i.e., wrenches, retrieval ropes, etc.
2. Utilize the buddy system to secure well and perform rescue(s).
3. Return to the briefing area and stand by for further instructions.

All Other Personnel:

1. Isolate the area and prevent entry by other persons into the 100 ppm ROE. Additionally the first responder(s) must evacuate any public places encompassed by the 100 ppm ROE. First responder(s) must take care not to injure themselves during this operation. Company and/or local officials must be contacted to aid in this operation. Evacuation of the public should be beyond the 100 ppm ROE.

Kaiser-Francis Oil Company Representative:

1. Remain at the briefing area, assess and monitor personnel and overall situation for hazards or conditions that might warrant a change in the action plan.
2. Notify company management or Local Incident Commander, and Police, Fire Department, or other local emergency services as required.

PROCEDURE FOR IGNITING AN UNCONTROLLABLE CONDITION:

Should control of the well be considered lost and ignition considered, take care to protect against exposure to Sulfur Dioxide (SO₂). Intentional ignition must be coordinated with the NMOCD and local officials. Additionally the NM State Police shall be the Incident Command of any major release.

The decision to ignite a well should be a last resort and one if not both of the following pertain.

- 1) Human life and/or property are in danger.
- 2) There is no hope of bringing the situation under control with the prevailing conditions at the site.

INSTRUCTIONS FOR IGNITION:

- 1) Two people are required. They must be equipped with positive pressure; self contained breathing apparatus and a "D"-ring style, full body, OSHA approved safety harness. Non-flammable rope will be attached.
- 2) One of the people will be a qualified safety person who will test the atmosphere for H₂S, Oxygen, & LFL. The other person will be the company supervisor; he is responsible for igniting the well.
- 3) Ignite up-wind from a distance no closer than necessary. Make sure that where you ignite from has the maximum escape avenue available. A 25mm flare gun shall be used, with a +/-500' range to ignite the gas.
- 4) Prior to ignition, make a final check for combustible gases.
- 5) Following ignition, continue with the emergency actions & procedures as before.

CONTACTING AUTHORITIES

Kaiser-Francis personnel must liaison with local and state agencies to ensure a proper response to a major release. Additionally, the OCD must be notified of the release as soon as possible but no later than 4 hours. Agencies will ask for information such as type and volume of release, wind direction, location of release, etc. Be prepared with all information available. The following call list of essential and potential responders has been prepared for use during a release. This response plan must be in coordination with the State of New Mexico's 'Hazardous Materials Emergency Response Plan' (HMER).

EMERGENCY CALL LIST: (Start and continue until ONE of these people have been reached)

	<u>OFFICE</u>	<u>MOBILE</u>
Kaiser-Francis Oil Co.	918/494-0000	
Bill Wilkinson	580/668-2335	580/221-4637
David Zerger	918/491-4350	918/557-6708
Charles Lock	918/491-4337	918/671-6510
Stuart Blake	918/491-4347	918/510-4126
Robert Sanford	918/491-4201	918/770-2682
Eric Hansen	918/491-4339	918/527-5260

EMERGENCY RESPONSE NUMBERS: Lea County, New Mexico

State Police – Artesia	575/748-9718
State Police – Hobbs	575/392-5580
State Police – Carlsbad	575/885-3138
Lea County Sheriff - Lovington	575/396-3611
Local Emergency Planning Center – Lea County	575/396-8607
Local Emergency Planning Center – Eddy County	575/885-3581
Fire Fighting, Rescue & Ambulance – Carlsbad	911 or 575/885-3125
Fire Fighting, Rescue & Ambulance – Hobbs	911 or 575/397-9308
Fire Fighting – Jal Volunteer Fire Department	911 or 505/395-2221
New Mexico Oil & Gas Commission – Artesia	575/748-1283
New Mexico Oil & Gas Commission – Hobbs	575/393-6161
Air Medical Transport Services – Hobbs	800/550-1025
Med Flight Air Ambulance – Albuquerque	505/842-4433
Angel MedFlight	844/553-9033
DXP	432/580-3770
BJ Services	575/392-5556
Halliburton	575/392-6531 800/844-8451

PROTECTION OF THE GENERAL PUBLIC/ROE:

In the event of a release with a concentration greater than 100 ppm H₂S, the ROE (Radius of Exposure) calculations will be done to determine if the following conditions have been met:

- Does the 100 ppm ROE include any public area (any place not associated with this site)
- Does the 500 ppm ROE include any public road (any road which the general public may travel)
- Is the 100 ppm ROE equal to or greater than 3000 feet

If any one of these conditions have been met then the Contingency Plan will be implemented. The following shows how to calculate the radius of exposure and an example.

Calculation for the 100 ppm ROE:

$$X = [(1.589)(\text{concentration})(Q)]^{(0.6258)}$$

(H₂S concentrations in decimal form)
 10,000 ppm +=1.+
 1,000 ppm +=.1+
 100 ppm +=.01+
 10 ppm +=.001+

Calculation for the 500 ppm ROE:

$$X + [(0.4546)(\text{concentration})(Q)]^{(0.6258)}$$

EXAMPLE: If a well/facility has been determined to have 150 ppm H₂S in the gas mixture and the well/facility is producing at a gas rate of 200 MCFPD then:

ROE for 100 PPM $X = [(1.589)(.0150)(200)]^{(0.6258)}$

$$X = 2.65'$$

ROE for 500 PPM $X = [(.4546)(.0150)(200)]^{(0.6258)}$

$$X = 1.2'$$

(These calculations will be forwarded to the appropriate District NMOCD office when applicable.)

PUBLIC EVACUATION PLAN:

(When the supervisor has determined that the General Public will be involved, the following plan will be implemented)

- 1) Notification of the emergency response agencies of the hazardous condition and Implement evacuation procedures.
- 2) A trained person in H₂S safety, shall monitor with detection equipment the H₂S Concentration, wind and area of exposure (ROE). This person will determine the outer perimeter of the hazardous area. The extent of the evacuation area will be determined from the data being collected. Monitoring shall continue until the situation has been resolved. **(All monitoring equipment will be UL approved, for use in class I groups A,B,C & D, Division I, hazardous locations. All monitors will have a minimum capability of measuring H₂S, oxygen, and flammable values.)**
- 3) Law enforcement shall be notified to set up necessary barriers and maintain such for the duration of the situation as well as aid in the evacuation procedure.
- 4) The company supervising personnel shall stay in communication with all agencies through out the duration of the situation and inform such agencies when the situation has been contained and the effected area(s) is safe to enter.

CHARACTERISTICS OF H₂S AND SO₂

Common Name	Chemical Formula	Specific Gravity	Threshold Limit	Hazardous Limit	Lethal Concentration
Hydrogen Sulfide	H ₂ S	1.189 Air = 1	10 ppm	100 ppm	600 ppm
Sulfur Dioxide	SO ₂	2.21 Air = 1	2 ppm	N/A	1000 ppm

TRAINING:

All responders must have training in the detection of H₂S measures for protection against the gas, equipment used for protection and emergency response. Weekly drills by all crews will be conducted and recorded in the IADC daily log. Additionally, responders must be equipped with H₂S monitors at all times.

PUBLIC RELATIONS

Kaiser-Francis recognizes that the news media have a legitimate interest in incidents at Kaiser-Francis facilities that could affect the public. It is to the company's benefit to cooperate with the news media when incidents occur because these media are our best liaison with the public.

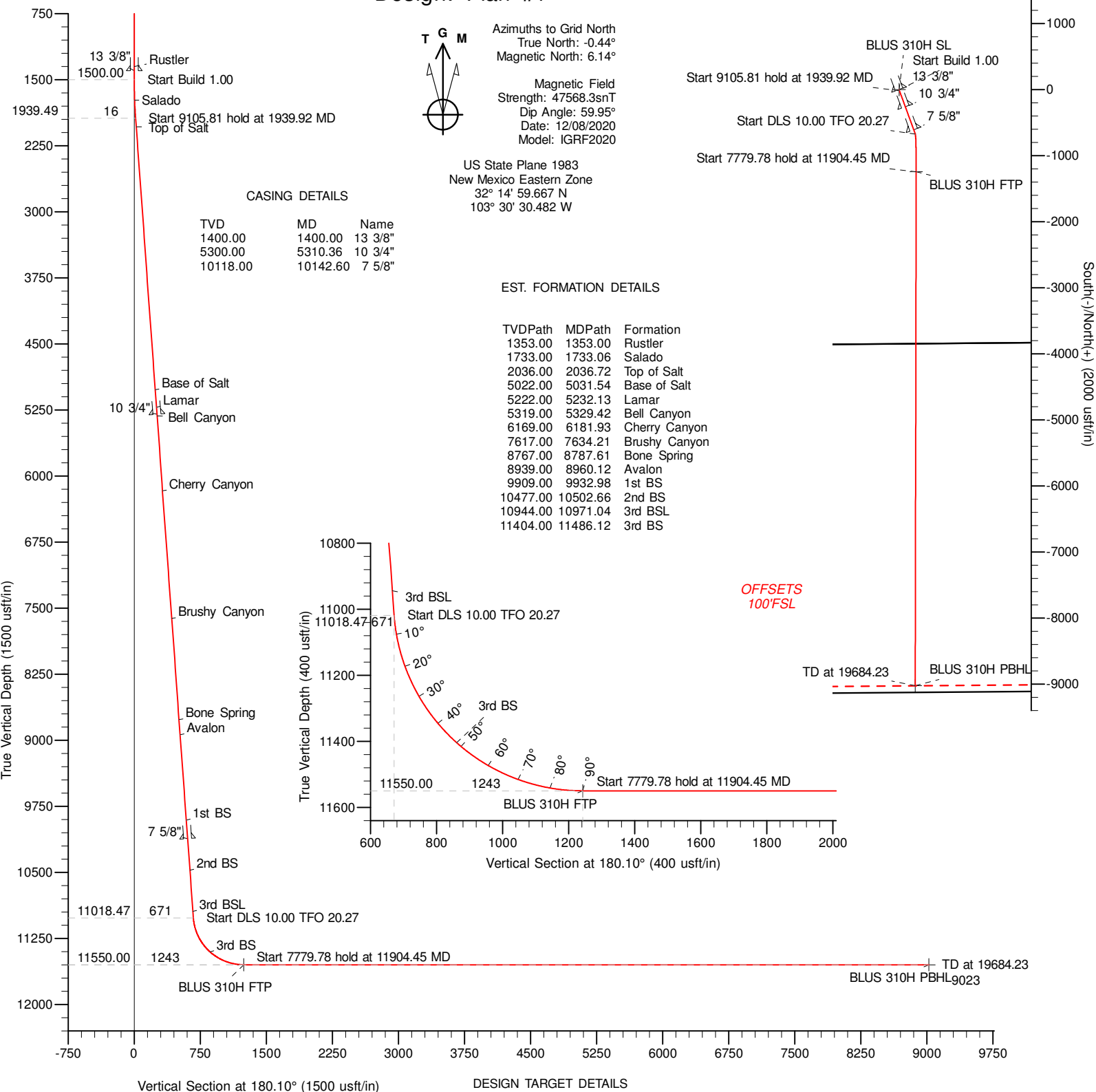
Our objective is to see that all reports of any emergency are factual and represent the company's position fairly and accurately. Cooperation with news media representatives is the most reliable guarantee that this objective will be met.

All contract and Kaiser-Francis employees are instructed **NOT** to make any statement to the media concerning the emergency incident. If a media representative contacts any employee, they should refer them to the designated Emergency Command Center where they should contact the Incident Commander or his designated relief for any information concerning the incident.

Project: Permian NM E'83
County: Lea
Site: BLUS Pad 8
Well: Bell Lake Unit South 310H
Wellbore: #310H OH
Design: Plan #1



West(-)/East(+) (2000 usft/in)
-1000 0 1000 2000



Titan Directional Drilling

Survey Report

Company:	Kaiser-Francis Oil Company	Local Co-ordinate Reference:	Well Bell Lake Unit South 310H
Project:	Permian NM E'83	TVD Reference:	est.GL+KB @ 3632.00usft (Planning)
Site:	BLUS Pad 8	MD Reference:	est.GL+KB @ 3632.00usft (Planning)
Well:	Bell Lake Unit South 310H	North Reference:	Grid
Wellbore:	#310H OH	Survey Calculation Method:	Minimum Curvature
Design:	Plan #1	Database:	EDM 5k-14

Project	Permian NM E'83		
Map System:	US State Plane 1983	System Datum:	Mean Sea Level
Geo Datum:	North American Datum 1983		
Map Zone:	New Mexico Eastern Zone		Using geodetic scale factor

Site	BLUS Pad 8, Centered on 109H		
Site Position:		Northing:	455,779.25 usft
From:	Map	Easting:	796,342.29 usft
Position Uncertainty:	0.00 usft	Slot Radius:	13-3/16 "
		Latitude:	32° 15' 1.151 N
		Longitude:	103° 30' 30.488 W
		Grid Convergence:	0.44 °

Well	Bell Lake Unit South 310H		
Well Position	+N/-S	0.00 usft	Northing:
	+E/-W	0.00 usft	Easting:
Position Uncertainty	0.00 usft		Wellhead Elevation:
			Latitude:
			Longitude:
			Ground Level:

Wellbore	#310H OH		
Magnetics	Model Name	Sample Date	Declination
			(°)
	IGRF2020	12/08/20	6.58
			Dip Angle
			(°)
			Field Strength
			(nT)
			47,568.28172612

Design	Plan #1		
Audit Notes:			
Version:	Phase:	PROTOTYPE	Tie On Depth:
			0.00
Vertical Section:	Depth From (TVD)	+N/-S	+E/-W
	(usft)	(usft)	(usft)
	0.00	0.00	0.00
			Direction
			(°)
			180.10

Planned Survey										
Measured	Inclination	Azimuth	Vertical	+N/-S	+E/-W	Vertical	Dogleg	Build	Turn	
Depth	(°)	(°)	Depth	(usft)	(usft)	Section	Rate	Rate	Rate	
(usft)			(usft)			(usft)	(°/100usft)	(°/100usft)	(°/100usft)	
0.00	0.00	0.00	0.00	0.00	0.00	0.00	0.00	0.00	0.00	
100.00	0.00	0.00	100.00	0.00	0.00	0.00	0.00	0.00	0.00	
200.00	0.00	0.00	200.00	0.00	0.00	0.00	0.00	0.00	0.00	
300.00	0.00	0.00	300.00	0.00	0.00	0.00	0.00	0.00	0.00	
400.00	0.00	0.00	400.00	0.00	0.00	0.00	0.00	0.00	0.00	
500.00	0.00	0.00	500.00	0.00	0.00	0.00	0.00	0.00	0.00	
600.00	0.00	0.00	600.00	0.00	0.00	0.00	0.00	0.00	0.00	
700.00	0.00	0.00	700.00	0.00	0.00	0.00	0.00	0.00	0.00	
800.00	0.00	0.00	800.00	0.00	0.00	0.00	0.00	0.00	0.00	
900.00	0.00	0.00	900.00	0.00	0.00	0.00	0.00	0.00	0.00	
1,000.00	0.00	0.00	1,000.00	0.00	0.00	0.00	0.00	0.00	0.00	
1,100.00	0.00	0.00	1,100.00	0.00	0.00	0.00	0.00	0.00	0.00	
1,200.00	0.00	0.00	1,200.00	0.00	0.00	0.00	0.00	0.00	0.00	
1,300.00	0.00	0.00	1,300.00	0.00	0.00	0.00	0.00	0.00	0.00	
1,353.00	0.00	0.00	1,353.00	0.00	0.00	0.00	0.00	0.00	0.00	
Rustler										

Titan Directional Drilling

Survey Report

Company:	Kaiser-Francis Oil Company	Local Co-ordinate Reference:	Well Bell Lake Unit South 310H
Project:	Permian NM E'83	TVD Reference:	est.GL+KB @ 3632.00usft (Planning)
Site:	BLUS Pad 8	MD Reference:	est.GL+KB @ 3632.00usft (Planning)
Well:	Bell Lake Unit South 310H	North Reference:	Grid
Wellbore:	#310H OH	Survey Calculation Method:	Minimum Curvature
Design:	Plan #1	Database:	EDM 5k-14

Planned Survey									
Measured Depth (usft)	Inclination (°)	Azimuth (°)	Vertical Depth (usft)	+N/-S (usft)	+E/-W (usft)	Vertical Section (usft)	Dogleg Rate (°/100usft)	Build Rate (°/100usft)	Turn Rate (°/100usft)
1,400.00	0.00	0.00	1,400.00	0.00	0.00	0.00	0.00	0.00	0.00
13 3/8"									
1,500.00	0.00	0.00	1,500.00	0.00	0.00	0.00	0.00	0.00	0.00
1,600.00	1.00	159.89	1,599.99	-0.82	0.30	0.82	1.00	1.00	0.00
1,700.00	2.00	159.89	1,699.96	-3.28	1.20	3.28	1.00	1.00	0.00
1,733.06	2.33	159.89	1,733.00	-4.45	1.63	4.45	1.00	1.00	0.00
Salado									
1,800.00	3.00	159.89	1,799.86	-7.37	2.70	7.37	1.00	1.00	0.00
1,900.00	4.00	159.89	1,899.68	-13.11	4.80	13.10	1.00	1.00	0.00
1,939.92	4.40	159.89	1,939.49	-15.85	5.80	15.84	1.00	1.00	0.00
2,000.00	4.40	159.89	1,999.39	-20.18	7.39	20.17	0.00	0.00	0.00
2,036.72	4.40	159.89	2,036.00	-22.82	8.36	22.81	0.00	0.00	0.00
Top of Salt									
2,100.00	4.40	159.89	2,099.10	-27.38	10.03	27.36	0.00	0.00	0.00
2,200.00	4.40	159.89	2,198.80	-34.58	12.66	34.56	0.00	0.00	0.00
2,300.00	4.40	159.89	2,298.51	-41.79	15.30	41.76	0.00	0.00	0.00
2,400.00	4.40	159.89	2,398.21	-48.99	17.94	48.96	0.00	0.00	0.00
2,500.00	4.40	159.89	2,497.92	-56.19	20.58	56.16	0.00	0.00	0.00
2,600.00	4.40	159.89	2,597.62	-63.40	23.21	63.36	0.00	0.00	0.00
2,700.00	4.40	159.89	2,697.33	-70.60	25.85	70.55	0.00	0.00	0.00
2,800.00	4.40	159.89	2,797.03	-77.80	28.49	77.75	0.00	0.00	0.00
2,900.00	4.40	159.89	2,896.74	-85.00	31.13	84.95	0.00	0.00	0.00
3,000.00	4.40	159.89	2,996.44	-92.21	33.76	92.15	0.00	0.00	0.00
3,100.00	4.40	159.89	3,096.15	-99.41	36.40	99.35	0.00	0.00	0.00
3,200.00	4.40	159.89	3,195.86	-106.61	39.04	106.55	0.00	0.00	0.00
3,300.00	4.40	159.89	3,295.56	-113.82	41.68	113.74	0.00	0.00	0.00
3,400.00	4.40	159.89	3,395.27	-121.02	44.31	120.94	0.00	0.00	0.00
3,500.00	4.40	159.89	3,494.97	-128.22	46.95	128.14	0.00	0.00	0.00
3,600.00	4.40	159.89	3,594.68	-135.43	49.59	135.34	0.00	0.00	0.00
3,700.00	4.40	159.89	3,694.38	-142.63	52.22	142.54	0.00	0.00	0.00
3,800.00	4.40	159.89	3,794.09	-149.83	54.86	149.73	0.00	0.00	0.00
3,900.00	4.40	159.89	3,893.79	-157.03	57.50	156.93	0.00	0.00	0.00
4,000.00	4.40	159.89	3,993.50	-164.24	60.14	164.13	0.00	0.00	0.00
4,100.00	4.40	159.89	4,093.20	-171.44	62.77	171.33	0.00	0.00	0.00
4,200.00	4.40	159.89	4,192.91	-178.64	65.41	178.53	0.00	0.00	0.00
4,300.00	4.40	159.89	4,292.61	-185.85	68.05	185.73	0.00	0.00	0.00
4,400.00	4.40	159.89	4,392.32	-193.05	70.69	192.92	0.00	0.00	0.00
4,500.00	4.40	159.89	4,492.03	-200.25	73.32	200.12	0.00	0.00	0.00
4,600.00	4.40	159.89	4,591.73	-207.45	75.96	207.32	0.00	0.00	0.00
4,700.00	4.40	159.89	4,691.44	-214.66	78.60	214.52	0.00	0.00	0.00
4,800.00	4.40	159.89	4,791.14	-221.86	81.24	221.72	0.00	0.00	0.00
4,900.00	4.40	159.89	4,890.85	-229.06	83.87	228.92	0.00	0.00	0.00
5,000.00	4.40	159.89	4,990.55	-236.27	86.51	236.11	0.00	0.00	0.00

Titan Directional Drilling

Survey Report

Company:	Kaiser-Francis Oil Company	Local Co-ordinate Reference:	Well Bell Lake Unit South 310H
Project:	Permian NM E'83	TVD Reference:	est.GL+KB @ 3632.00usft (Planning)
Site:	BLUS Pad 8	MD Reference:	est.GL+KB @ 3632.00usft (Planning)
Well:	Bell Lake Unit South 310H	North Reference:	Grid
Wellbore:	#310H OH	Survey Calculation Method:	Minimum Curvature
Design:	Plan #1	Database:	EDM 5k-14

Planned Survey										
Measured Depth (usft)	Inclination (°)	Azimuth (°)	Vertical Depth (usft)	+N/-S (usft)	+E/-W (usft)	Vertical Section (usft)	Dogleg Rate (°/100usft)	Build Rate (°/100usft)	Turn Rate (°/100usft)	
5,031.54	4.40	159.89	5,022.00	-238.54	87.34	238.38	0.00	0.00	0.00	
Base of Salt										
5,100.00	4.40	159.89	5,090.26	-243.47	89.15	243.31	0.00	0.00	0.00	
5,200.00	4.40	159.89	5,189.96	-250.67	91.79	250.51	0.00	0.00	0.00	
5,232.13	4.40	159.89	5,222.00	-252.99	92.63	252.82	0.00	0.00	0.00	
Lamar										
5,300.00	4.40	159.89	5,289.67	-257.87	94.42	257.71	0.00	0.00	0.00	
5,310.36	4.40	159.89	5,300.00	-258.62	94.70	258.46	0.00	0.00	0.00	
10 3/4"										
5,329.42	4.40	159.89	5,319.00	-259.99	95.20	259.83	0.00	0.00	0.00	
Bell Canyon										
5,400.00	4.40	159.89	5,389.37	-265.08	97.06	264.91	0.00	0.00	0.00	
5,500.00	4.40	159.89	5,489.08	-272.28	99.70	272.11	0.00	0.00	0.00	
5,600.00	4.40	159.89	5,588.78	-279.48	102.34	279.30	0.00	0.00	0.00	
5,700.00	4.40	159.89	5,688.49	-286.69	104.97	286.50	0.00	0.00	0.00	
5,800.00	4.40	159.89	5,788.20	-293.89	107.61	293.70	0.00	0.00	0.00	
5,900.00	4.40	159.89	5,887.90	-301.09	110.25	300.90	0.00	0.00	0.00	
6,000.00	4.40	159.89	5,987.61	-308.29	112.89	308.10	0.00	0.00	0.00	
6,100.00	4.40	159.89	6,087.31	-315.50	115.52	315.30	0.00	0.00	0.00	
6,181.93	4.40	159.89	6,169.00	-321.40	117.68	321.19	0.00	0.00	0.00	
Cherry Canyon										
6,200.00	4.40	159.89	6,187.02	-322.70	118.16	322.49	0.00	0.00	0.00	
6,300.00	4.40	159.89	6,286.72	-329.90	120.80	329.69	0.00	0.00	0.00	
6,400.00	4.40	159.89	6,386.43	-337.11	123.43	336.89	0.00	0.00	0.00	
6,500.00	4.40	159.89	6,486.13	-344.31	126.07	344.09	0.00	0.00	0.00	
6,600.00	4.40	159.89	6,585.84	-351.51	128.71	351.29	0.00	0.00	0.00	
6,700.00	4.40	159.89	6,685.54	-358.72	131.35	358.49	0.00	0.00	0.00	
6,800.00	4.40	159.89	6,785.25	-365.92	133.98	365.68	0.00	0.00	0.00	
6,900.00	4.40	159.89	6,884.95	-373.12	136.62	372.88	0.00	0.00	0.00	
7,000.00	4.40	159.89	6,984.66	-380.32	139.26	380.08	0.00	0.00	0.00	
7,100.00	4.40	159.89	7,084.37	-387.53	141.90	387.28	0.00	0.00	0.00	
7,200.00	4.40	159.89	7,184.07	-394.73	144.53	394.48	0.00	0.00	0.00	
7,300.00	4.40	159.89	7,283.78	-401.93	147.17	401.68	0.00	0.00	0.00	
7,400.00	4.40	159.89	7,383.48	-409.14	149.81	408.87	0.00	0.00	0.00	
7,500.00	4.40	159.89	7,483.19	-416.34	152.45	416.07	0.00	0.00	0.00	
7,600.00	4.40	159.89	7,582.89	-423.54	155.08	423.27	0.00	0.00	0.00	
7,634.21	4.40	159.89	7,617.00	-426.01	155.99	425.73	0.00	0.00	0.00	
Brushy Canyon										
7,700.00	4.40	159.89	7,682.60	-430.74	157.72	430.47	0.00	0.00	0.00	
7,800.00	4.40	159.89	7,782.30	-437.95	160.36	437.67	0.00	0.00	0.00	
7,900.00	4.40	159.89	7,882.01	-445.15	163.00	444.86	0.00	0.00	0.00	
8,000.00	4.40	159.89	7,981.71	-452.35	165.63	452.06	0.00	0.00	0.00	
8,100.00	4.40	159.89	8,081.42	-459.56	168.27	459.26	0.00	0.00	0.00	
8,200.00	4.40	159.89	8,181.12	-466.76	170.91	466.46	0.00	0.00	0.00	
8,300.00	4.40	159.89	8,280.83	-473.96	173.55	473.66	0.00	0.00	0.00	

Titan Directional Drilling

Survey Report

Company:	Kaiser-Francis Oil Company	Local Co-ordinate Reference:	Well Bell Lake Unit South 310H
Project:	Permian NM E'83	TVD Reference:	est.GL+KB @ 3632.00usft (Planning)
Site:	BLUS Pad 8	MD Reference:	est.GL+KB @ 3632.00usft (Planning)
Well:	Bell Lake Unit South 310H	North Reference:	Grid
Wellbore:	#310H OH	Survey Calculation Method:	Minimum Curvature
Design:	Plan #1	Database:	EDM 5k-14

Planned Survey									
Measured Depth (usft)	Inclination (°)	Azimuth (°)	Vertical Depth (usft)	+N/-S (usft)	+E/-W (usft)	Vertical Section (usft)	Dogleg Rate (°/100usft)	Build Rate (°/100usft)	Turn Rate (°/100usft)
8,400.00	4.40	159.89	8,380.54	-481.16	176.18	480.86	0.00	0.00	0.00
8,500.00	4.40	159.89	8,480.24	-488.37	178.82	488.05	0.00	0.00	0.00
8,600.00	4.40	159.89	8,579.95	-495.57	181.46	495.25	0.00	0.00	0.00
8,700.00	4.40	159.89	8,679.65	-502.77	184.10	502.45	0.00	0.00	0.00
8,787.61	4.40	159.89	8,767.00	-509.08	186.41	508.76	0.00	0.00	0.00
Bone Spring									
8,800.00	4.40	159.89	8,779.36	-509.98	186.73	509.65	0.00	0.00	0.00
8,900.00	4.40	159.89	8,879.06	-517.18	189.37	516.85	0.00	0.00	0.00
8,960.12	4.40	159.89	8,939.00	-521.51	190.96	521.18	0.00	0.00	0.00
Avalon									
9,000.00	4.40	159.89	8,978.77	-524.38	192.01	524.05	0.00	0.00	0.00
9,100.00	4.40	159.89	9,078.47	-531.58	194.65	531.24	0.00	0.00	0.00
9,200.00	4.40	159.89	9,178.18	-538.79	197.28	538.44	0.00	0.00	0.00
9,300.00	4.40	159.89	9,277.88	-545.99	199.92	545.64	0.00	0.00	0.00
9,400.00	4.40	159.89	9,377.59	-553.19	202.56	552.84	0.00	0.00	0.00
9,500.00	4.40	159.89	9,477.29	-560.40	205.19	560.04	0.00	0.00	0.00
9,600.00	4.40	159.89	9,577.00	-567.60	207.83	567.24	0.00	0.00	0.00
9,700.00	4.40	159.89	9,676.71	-574.80	210.47	574.43	0.00	0.00	0.00
9,800.00	4.40	159.89	9,776.41	-582.01	213.11	581.63	0.00	0.00	0.00
9,900.00	4.40	159.89	9,876.12	-589.21	215.74	588.83	0.00	0.00	0.00
9,932.98	4.40	159.89	9,909.00	-591.58	216.61	591.20	0.00	0.00	0.00
1st BS									
10,000.00	4.40	159.89	9,975.82	-596.41	218.38	596.03	0.00	0.00	0.00
10,100.00	4.40	159.89	10,075.53	-603.61	221.02	603.23	0.00	0.00	0.00
10,142.60	4.40	159.89	10,118.00	-606.68	222.14	606.29	0.00	0.00	0.00
7 5/8"									
10,200.00	4.40	159.89	10,175.23	-610.82	223.66	610.43	0.00	0.00	0.00
10,300.00	4.40	159.89	10,274.94	-618.02	226.29	617.62	0.00	0.00	0.00
10,400.00	4.40	159.89	10,374.64	-625.22	228.93	624.82	0.00	0.00	0.00
10,500.00	4.40	159.89	10,474.35	-632.43	231.57	632.02	0.00	0.00	0.00
10,502.66	4.40	159.89	10,477.00	-632.62	231.64	632.21	0.00	0.00	0.00
2nd BS									
10,600.00	4.40	159.89	10,574.05	-639.63	234.21	639.22	0.00	0.00	0.00
10,700.00	4.40	159.89	10,673.76	-646.83	236.84	646.42	0.00	0.00	0.00
10,800.00	4.40	159.89	10,773.46	-654.03	239.48	653.62	0.00	0.00	0.00
10,900.00	4.40	159.89	10,873.17	-661.24	242.12	660.81	0.00	0.00	0.00
10,971.04	4.40	159.89	10,944.00	-666.35	243.99	665.93	0.00	0.00	0.00
3rd BSL									
11,000.00	4.40	159.89	10,972.88	-668.44	244.76	668.01	0.00	0.00	0.00
11,045.73	4.40	159.89	11,018.47	-671.73	245.96	671.30	0.00	0.00	0.00
11,050.00	4.80	161.66	11,022.73	-672.06	246.07	671.63	10.00	9.43	41.39
11,100.00	9.67	171.13	11,072.31	-678.20	247.38	677.77	10.00	9.74	18.95
11,150.00	14.63	174.26	11,121.18	-688.64	248.66	688.20	10.00	9.92	6.26
11,200.00	19.61	175.83	11,168.95	-703.30	249.91	702.86	10.00	9.96	3.13

Titan Directional Drilling

Survey Report

Company:	Kaiser-Francis Oil Company	Local Co-ordinate Reference:	Well Bell Lake Unit South 310H
Project:	Permian NM E'83	TVD Reference:	est.GL+KB @ 3632.00usft (Planning)
Site:	BLUS Pad 8	MD Reference:	est.GL+KB @ 3632.00usft (Planning)
Well:	Bell Lake Unit South 310H	North Reference:	Grid
Wellbore:	#310H OH	Survey Calculation Method:	Minimum Curvature
Design:	Plan #1	Database:	EDM 5k-14

Planned Survey									
Measured Depth (usft)	Inclination (°)	Azimuth (°)	Vertical Depth (usft)	+N/-S (usft)	+E/-W (usft)	Vertical Section (usft)	Dogleg Rate (°/100usft)	Build Rate (°/100usft)	Turn Rate (°/100usft)
11,250.00	24.60	176.78	11,215.26	-722.07	251.10	721.63	10.00	9.97	1.90
11,300.00	29.59	177.42	11,259.76	-744.81	252.24	744.37	10.00	9.98	1.29
11,350.00	34.58	177.89	11,302.11	-771.34	253.32	770.90	10.00	9.99	0.95
11,400.00	39.58	178.26	11,341.98	-801.46	254.33	801.02	10.00	9.99	0.73
11,450.00	44.58	178.56	11,379.08	-834.94	255.25	834.50	10.00	9.99	0.59
11,486.12	48.19	178.74	11,404.00	-861.08	255.87	860.64	10.00	9.99	0.51
3rd BS									
11,500.00	49.57	178.81	11,413.13	-871.53	256.09	871.09	10.00	9.99	0.47
11,550.00	54.57	179.02	11,443.85	-910.95	256.84	910.50	10.00	9.99	0.43
11,600.00	59.57	179.21	11,471.02	-952.90	257.48	952.45	10.00	9.99	0.38
11,650.00	64.56	179.38	11,494.44	-997.06	258.02	996.60	10.00	10.00	0.34
11,700.00	69.56	179.54	11,513.92	-1,043.09	258.46	1,042.63	10.00	10.00	0.31
11,750.00	74.56	179.68	11,529.31	-1,090.64	258.78	1,090.19	10.00	10.00	0.29
11,800.00	79.56	179.82	11,540.51	-1,139.35	258.99	1,138.90	10.00	10.00	0.28
11,850.00	84.56	179.96	11,547.42	-1,188.86	259.08	1,188.40	10.00	10.00	0.27
11,904.45	90.00	180.10	11,550.00	-1,243.23	259.05	1,242.78	10.00	10.00	0.27
12,000.00	90.00	180.10	11,550.00	-1,338.78	258.88	1,338.32	0.00	0.00	0.00
12,100.00	90.00	180.10	11,550.00	-1,438.78	258.70	1,438.32	0.00	0.00	0.00
12,200.00	90.00	180.10	11,550.00	-1,538.78	258.52	1,538.32	0.00	0.00	0.00
12,300.00	90.00	180.10	11,550.00	-1,638.78	258.34	1,638.32	0.00	0.00	0.00
12,400.00	90.00	180.10	11,550.00	-1,738.78	258.15	1,738.32	0.00	0.00	0.00
12,500.00	90.00	180.10	11,550.00	-1,838.78	257.97	1,838.32	0.00	0.00	0.00
12,600.00	90.00	180.10	11,550.00	-1,938.78	257.79	1,938.32	0.00	0.00	0.00
12,700.00	90.00	180.10	11,550.00	-2,038.77	257.61	2,038.32	0.00	0.00	0.00
12,800.00	90.00	180.10	11,550.00	-2,138.77	257.43	2,138.32	0.00	0.00	0.00
12,900.00	90.00	180.10	11,550.00	-2,238.77	257.25	2,238.32	0.00	0.00	0.00
13,000.00	90.00	180.10	11,550.00	-2,338.77	257.07	2,338.32	0.00	0.00	0.00
13,100.00	90.00	180.10	11,550.00	-2,438.77	256.88	2,438.32	0.00	0.00	0.00
13,200.00	90.00	180.10	11,550.00	-2,538.77	256.70	2,538.32	0.00	0.00	0.00
13,300.00	90.00	180.10	11,550.00	-2,638.77	256.52	2,638.32	0.00	0.00	0.00
13,400.00	90.00	180.10	11,550.00	-2,738.77	256.34	2,738.32	0.00	0.00	0.00
13,500.00	90.00	180.10	11,550.00	-2,838.77	256.16	2,838.32	0.00	0.00	0.00
13,600.00	90.00	180.10	11,550.00	-2,938.77	255.98	2,938.32	0.00	0.00	0.00
13,700.00	90.00	180.10	11,550.00	-3,038.77	255.79	3,038.32	0.00	0.00	0.00
13,800.00	90.00	180.10	11,550.00	-3,138.77	255.61	3,138.32	0.00	0.00	0.00
13,900.00	90.00	180.10	11,550.00	-3,238.77	255.43	3,238.32	0.00	0.00	0.00
14,000.00	90.00	180.10	11,550.00	-3,338.77	255.25	3,338.32	0.00	0.00	0.00
14,100.00	90.00	180.10	11,550.00	-3,438.77	255.07	3,438.32	0.00	0.00	0.00
14,200.00	90.00	180.10	11,550.00	-3,538.77	254.89	3,538.32	0.00	0.00	0.00
14,300.00	90.00	180.10	11,550.00	-3,638.77	254.70	3,638.32	0.00	0.00	0.00
14,400.00	90.00	180.10	11,550.00	-3,738.77	254.52	3,738.32	0.00	0.00	0.00
14,500.00	90.00	180.10	11,550.00	-3,838.77	254.34	3,838.32	0.00	0.00	0.00
14,600.00	90.00	180.10	11,550.00	-3,938.77	254.16	3,938.32	0.00	0.00	0.00
14,700.00	90.00	180.10	11,550.00	-4,038.77	253.98	4,038.32	0.00	0.00	0.00

Titan Directional Drilling

Survey Report

Company:	Kaiser-Francis Oil Company	Local Co-ordinate Reference:	Well Bell Lake Unit South 310H
Project:	Permian NM E'83	TVD Reference:	est.GL+KB @ 3632.00usft (Planning)
Site:	BLUS Pad 8	MD Reference:	est.GL+KB @ 3632.00usft (Planning)
Well:	Bell Lake Unit South 310H	North Reference:	Grid
Wellbore:	#310H OH	Survey Calculation Method:	Minimum Curvature
Design:	Plan #1	Database:	EDM 5k-14

Planned Survey									
Measured Depth (usft)	Inclination (°)	Azimuth (°)	Vertical Depth (usft)	+N/-S (usft)	+E/-W (usft)	Vertical Section (usft)	Dogleg Rate (°/100usft)	Build Rate (°/100usft)	Turn Rate (°/100usft)
14,800.00	90.00	180.10	11,550.00	-4,138.77	253.80	4,138.32	0.00	0.00	0.00
14,900.00	90.00	180.10	11,550.00	-4,238.77	253.62	4,238.32	0.00	0.00	0.00
15,000.00	90.00	180.10	11,550.00	-4,338.77	253.43	4,338.32	0.00	0.00	0.00
15,100.00	90.00	180.10	11,550.00	-4,438.77	253.25	4,438.32	0.00	0.00	0.00
15,200.00	90.00	180.10	11,550.00	-4,538.77	253.07	4,538.32	0.00	0.00	0.00
15,300.00	90.00	180.10	11,550.00	-4,638.77	252.89	4,638.32	0.00	0.00	0.00
15,400.00	90.00	180.10	11,550.00	-4,738.77	252.71	4,738.32	0.00	0.00	0.00
15,500.00	90.00	180.10	11,550.00	-4,838.77	252.53	4,838.32	0.00	0.00	0.00
15,600.00	90.00	180.10	11,550.00	-4,938.77	252.34	4,938.32	0.00	0.00	0.00
15,700.00	90.00	180.10	11,550.00	-5,038.77	252.16	5,038.32	0.00	0.00	0.00
15,800.00	90.00	180.10	11,550.00	-5,138.77	251.98	5,138.32	0.00	0.00	0.00
15,900.00	90.00	180.10	11,550.00	-5,238.77	251.80	5,238.32	0.00	0.00	0.00
16,000.00	90.00	180.10	11,550.00	-5,338.77	251.62	5,338.32	0.00	0.00	0.00
16,100.00	90.00	180.10	11,550.00	-5,438.77	251.44	5,438.32	0.00	0.00	0.00
16,200.00	90.00	180.10	11,550.00	-5,538.77	251.25	5,538.32	0.00	0.00	0.00
16,300.00	90.00	180.10	11,550.00	-5,638.77	251.07	5,638.32	0.00	0.00	0.00
16,400.00	90.00	180.10	11,550.00	-5,738.77	250.89	5,738.32	0.00	0.00	0.00
16,500.00	90.00	180.10	11,550.00	-5,838.77	250.71	5,838.32	0.00	0.00	0.00
16,600.00	90.00	180.10	11,550.00	-5,938.77	250.53	5,938.32	0.00	0.00	0.00
16,700.00	90.00	180.10	11,550.00	-6,038.77	250.35	6,038.32	0.00	0.00	0.00
16,800.00	90.00	180.10	11,550.00	-6,138.77	250.17	6,138.32	0.00	0.00	0.00
16,900.00	90.00	180.10	11,550.00	-6,238.77	249.98	6,238.32	0.00	0.00	0.00
17,000.00	90.00	180.10	11,550.00	-6,338.77	249.80	6,338.32	0.00	0.00	0.00
17,100.00	90.00	180.10	11,550.00	-6,438.77	249.62	6,438.32	0.00	0.00	0.00
17,200.00	90.00	180.10	11,550.00	-6,538.77	249.44	6,538.32	0.00	0.00	0.00
17,300.00	90.00	180.10	11,550.00	-6,638.77	249.26	6,638.32	0.00	0.00	0.00
17,400.00	90.00	180.10	11,550.00	-6,738.77	249.08	6,738.32	0.00	0.00	0.00
17,500.00	90.00	180.10	11,550.00	-6,838.77	248.89	6,838.32	0.00	0.00	0.00
17,600.00	90.00	180.10	11,550.00	-6,938.77	248.71	6,938.32	0.00	0.00	0.00
17,700.00	90.00	180.10	11,550.00	-7,038.77	248.53	7,038.32	0.00	0.00	0.00
17,800.00	90.00	180.10	11,550.00	-7,138.77	248.35	7,138.32	0.00	0.00	0.00
17,900.00	90.00	180.10	11,550.00	-7,238.77	248.17	7,238.32	0.00	0.00	0.00
18,000.00	90.00	180.10	11,550.00	-7,338.77	247.99	7,338.32	0.00	0.00	0.00
18,100.00	90.00	180.10	11,550.00	-7,438.77	247.80	7,438.32	0.00	0.00	0.00
18,200.00	90.00	180.10	11,550.00	-7,538.77	247.62	7,538.32	0.00	0.00	0.00
18,300.00	90.00	180.10	11,550.00	-7,638.77	247.44	7,638.32	0.00	0.00	0.00
18,400.00	90.00	180.10	11,550.00	-7,738.77	247.26	7,738.32	0.00	0.00	0.00
18,500.00	90.00	180.10	11,550.00	-7,838.77	247.08	7,838.32	0.00	0.00	0.00
18,600.00	90.00	180.10	11,550.00	-7,938.77	246.90	7,938.32	0.00	0.00	0.00
18,700.00	90.00	180.10	11,550.00	-8,038.77	246.72	8,038.32	0.00	0.00	0.00
18,800.00	90.00	180.10	11,550.00	-8,138.77	246.53	8,138.32	0.00	0.00	0.00
18,900.00	90.00	180.10	11,550.00	-8,238.76	246.35	8,238.32	0.00	0.00	0.00
19,000.00	90.00	180.10	11,550.00	-8,338.76	246.17	8,338.32	0.00	0.00	0.00

Titan Directional Drilling

Survey Report

Company:	Kaiser-Francis Oil Company	Local Co-ordinate Reference:	Well Bell Lake Unit South 310H
Project:	Permian NM E'83	TVD Reference:	est.GL+KB @ 3632.00usft (Planning)
Site:	BLUS Pad 8	MD Reference:	est.GL+KB @ 3632.00usft (Planning)
Well:	Bell Lake Unit South 310H	North Reference:	Grid
Wellbore:	#310H OH	Survey Calculation Method:	Minimum Curvature
Design:	Plan #1	Database:	EDM 5k-14

Planned Survey										
Measured Depth (usft)	Inclination (°)	Azimuth (°)	Vertical Depth (usft)	+N/-S (usft)	+E/-W (usft)	Vertical Section (usft)	Dogleg Rate (°/100usft)	Build Rate (°/100usft)	Turn Rate (°/100usft)	
19,100.00	90.00	180.10	11,550.00	-8,438.76	245.99	8,438.32	0.00	0.00	0.00	
19,200.00	90.00	180.10	11,550.00	-8,538.76	245.81	8,538.32	0.00	0.00	0.00	
19,300.00	90.00	180.10	11,550.00	-8,638.76	245.63	8,638.32	0.00	0.00	0.00	
19,400.00	90.00	180.10	11,550.00	-8,738.76	245.44	8,738.32	0.00	0.00	0.00	
19,500.00	90.00	180.10	11,550.00	-8,838.76	245.26	8,838.32	0.00	0.00	0.00	
19,600.00	90.00	180.10	11,550.00	-8,938.76	245.08	8,938.32	0.00	0.00	0.00	
19,684.23	90.00	180.10	11,550.00	-9,023.00	244.93	9,022.56	0.00	0.00	0.00	

Casing Points					
Measured Depth (usft)	Vertical Depth (usft)	Name		Casing Diameter (")	Hole Diameter (")
1,400.00	1,400.00	13 3/8"		13-3/8	17-1/2
5,310.36	5,300.00	10 3/4"		10-3/4	12-1/4
10,142.60	10,118.00	7 5/8"		7-5/8	9-7/8

Formations						
Measured Depth (usft)	Vertical Depth (usft)	Name	Lithology	Dip (°)	Dip Direction (°)	
1,353.00	1,353.00	Rustler				
1,733.06	1,733.00	Salado				
2,036.72	2,036.00	Top of Salt				
5,031.54	5,022.00	Base of Salt				
5,232.13	5,222.00	Lamar				
5,329.42	5,319.00	Bell Canyon				
6,181.93	6,169.00	Cherry Canyon				
7,634.21	7,617.00	Brushy Canyon				
8,787.61	8,767.00	Bone Spring				
8,960.12	8,939.00	Avalon				
9,932.98	9,909.00	1st BS				
10,502.66	10,477.00	2nd BS				
10,971.04	10,944.00	3rd BSL				
11,486.12	11,404.00	3rd BS				

District I
1625 N. French Dr., Hobbs, NM 88240
District II
811 S. First St., Artesia, NM 88210
District III
1000 Rio Brazos Road, Aztec, NM 87410
District IV
1220 S. St. Francis Dr., Santa Fe, NM 87505

State of New Mexico
Energy, Minerals and Natural Resources Department
Oil Conservation Division
1220 South St. Francis Dr.
Santa Fe, NM 87505

Submit Original
to Appropriate
District Office

GAS CAPTURE PLAN

Date: 07/02/2018

☒ Original

Operator & OGRID No.: Kaiser-Francis Oil Company, 12361

☐ Amended - Reason for Amendment: _____

This Gas Capture Plan outlines actions to be taken by the Operator to reduce well/production facility flaring/venting for new completion (new drill, recomple to new zone, re-frac) activity.

Note: Form C-129 must be submitted and approved prior to exceeding 60 days allowed by Rule (Subsection A of 19.15.18.12 NMAC).

Well(s)/Production Facility – Name of facility

The well(s) that will be located at the production facility are shown in the table below.

Well Name	API	Well Location	Expected MCF/D	Flared or Vented		Comments
Bell Lake Unit South 109H		6-24S-34E	2000	0		
Bell Lake Unit South 209H		6-24S-34E	2000	0		
Bell Lake Unit South 309H		6-24S-34E	2000	0		
Bell Lake Unit South 409H		6-24S-34E	2000	0		
Bell Lake Unit South 1110H		6-24S-34E	2000	0		
Bell Lake Unit South 210H		6-24S-34E	2000	0		
Bell Lake Unit South 310H		6-24S-34E	2000	0		
Bell Lake Unit South 410H		6-24S-34E	2000	0		

Gathering System and Pipeline Notification

Well(s) will be connected to a production facility after flowback operations are complete, if gas transporter system is in place. The gas produced from production facility is dedicated to Targa and will be connected to Targa low/high pressure gathering system located in Lea County, New Mexico. It will require 11,000' of pipeline to connect the facility to low/high pressure gathering system. Kaiser-Francis Oil Company provides (periodically) to Targa a drilling, completion and estimated first production date for wells that are scheduled to be drilled in the foreseeable future. In addition, Kaiser-Francis Oil Company and Targa have periodic conference calls to discuss changes to drilling and completion schedules. Gas from these wells will be processed at Targa Processing Plant located in Sec. 36, Twn. 19S, Rng. 36E, Lea County, New Mexico. The actual flow of the gas will be based on compression operating parameters and gathering system pressures.

Flowback Strategy

After the fracture treatment/completion operations, well(s) will be produced to temporary production tanks and gas will be flared or vented. During flowback, the fluids and sand content will be monitored. When the produced fluids contain minimal sand, the wells will be turned to production facilities. Gas sales should start as soon as the wells start flowing through the production facilities, unless there are operational issues on Targa system at that time. Based on current information, it is Kaiser-Francis Oil Company's belief the system can take this gas upon completion of the well(s).

Safety requirements during cleanout operations from the use of underbalanced air cleanout systems may necessitate that sand and non-pipeline quality gas be vented and/or flared rather than sold on a temporary basis.

Alternatives to Reduce Flaring

Below are alternatives considered from a conceptual standpoint to reduce the amount of gas flared.

- Power Generation – On lease
 - Only a portion of gas is consumed operating the generator, remainder of gas will be flared
- Compressed Natural Gas – On lease
 - Gas flared would be minimal, but might be uneconomical to operate when gas volume declines
- NGL Removal – On lease
 - Plants are expensive, residue gas is still flared, and uneconomical to operate when gas volume declines



U.S. Department of the Interior
BUREAU OF LAND MANAGEMENT

SUPO Data Report

12/18/2020

APD ID: 10400059133

Submission Date: 07/17/2020

Highlighted data
reflects the most
recent changes

Operator Name: KAISER FRANCIS OIL COMPANY

Well Name: BELL LAKE UNIT SOUTH

Well Number: 310H

[Show Final Text](#)

Well Type: OIL WELL

Well Work Type: Drill

Section 1 - Existing Roads

Will existing roads be used? YES

Existing Road Map:

BELL_LAKE_UNIT_SOUTH_310H_Existing_Roads_20200716101544.pdf

Existing Road Purpose: ACCESS,FLUID TRANSPORT

Row(s) Exist? NO

ROW ID(s)

ID:

Do the existing roads need to be improved? NO

Existing Road Improvement Description:

Existing Road Improvement Attachment:

Section 2 - New or Reconstructed Access Roads

Will new roads be needed? YES

New Road Map:

BELL_LAKE_UNIT_SOUTH_310H_Access_Road_20200716101600.pdf

New road type: RESOURCE

Length: 435

Feet

Width (ft.): 30

Max slope (%): 2

Max grade (%): 2

Army Corp of Engineers (ACOE) permit required? N

ACOE Permit Number(s):

New road travel width: 20

New road access erosion control: Road construction requirements and regular maintenance would alleviate potential impacts to the access road from water erosion damage.

New road access plan or profile prepared? N

New road access plan attachment:

Access road engineering design? N

Access road engineering design attachment:

Operator Name: KAISER FRANCIS OIL COMPANY**Well Name:** BELL LAKE UNIT SOUTH**Well Number:** 310H**Turnout?** N**Access surfacing type:** OTHER**Access topsoil source:** BOTH**Access surfacing type description:** Native caliche**Access onsite topsoil source depth:** 6**Offsite topsoil source description:** BLM's caliche pit in SWSW Section 22-T24-R34E or NENE Section 20-T23S-R33E.**Onsite topsoil removal process:** The top 6 inches of topsoil is pushed off and stockpiled along the side of the location. An approximate 160 X 160 area is used within the proposed well site to remove caliche. Subsoil is removed and stockpiled within the pad site to build the location and road. Then subsoil is pushed back in the hole and caliche is spread accordingly across proposed access road.**Access other construction information:****Access miscellaneous information:****Number of access turnouts:****Access turnout map:**

Drainage Control

New road drainage crossing: OTHER**Drainage Control comments:** Proposed access road will be crowned and ditched and constructed of 6 inch rolled and compacted caliche. Water will be diverted where necessary to avoid ponding, maintain good drainage, and to be consistent with local drainage patterns.**Road Drainage Control Structures (DCS) description:** The ditches will be 3' wide with 3:1 slopes**Road Drainage Control Structures (DCS) attachment:**

Access Additional Attachments

Section 3 - Location of Existing Wells

Existing Wells Map? YES**Attach Well map:**

BELL_LAKE_UNIT_SOUTH_310H_1_Mile_Wells_Map_20200716101630.pdf

Section 4 - Location of Existing and/or Proposed Production Facilities

Submit or defer a Proposed Production Facilities plan? DEFER**Estimated Production Facilities description:** Production facilities are planned for the south side of pad. Plan for initial wells: 2-1000 bbl water tanks and 5 -1000 bbl oil tanks, a temporary 6X20 horizontal 3-phase sep, a 48 X 10 3-phase sep, a 8 X 20 heater treater and a 48X 10 2-phase sep

Operator Name: KAISER FRANCIS OIL COMPANY**Well Name:** BELL LAKE UNIT SOUTH**Well Number:** 310H**Section 5 - Location and Types of Water Supply****Water Source Table****Water source type:** OTHER**Describe type:** Brine Water**Water source use type:** INTERMEDIATE/PRODUCTION
CASING**Source latitude:****Source longitude:****Source datum:****Water source permit type:** PRIVATE CONTRACT**Water source transport method:** TRUCKING**Source land ownership:** PRIVATE**Source transportation land ownership:** OTHER**Water source volume (barrels):** 20000**Source volume (gal):** 840000**Describe transportation land ownership:** Source transportation land ownership is a mixture of Federal, State and County.**Source volume (acre-feet):** 2.57786193**Water source type:** OTHER**Describe type:** FRESH WATER**Water source use type:** STIMULATION
OTHER
SURFACE CASING**Describe use type:** ROAD/PAD CONSTRUCTION AND MAINTENANCE**Source latitude:****Source longitude:****Source datum:****Water source permit type:** PRIVATE CONTRACT**Water source transport method:** TRUCKING**Source land ownership:** PRIVATE**Source transportation land ownership:** OTHER**Water source volume (barrels):** 247491.920887**Source volume (gal):** 10394646.9**Describe transportation land ownership:** Source transportation land ownership is a mixture of Federal, State and County.**Source volume (acre-feet):** 31.9

Operator Name: KAISER FRANCIS OIL COMPANY**Well Name:** BELL LAKE UNIT SOUTH**Well Number:** 310H**Water source and transportation map:**

BLUS_Pad_8_Water_Source_Map_20200714145044.pdf

Water source comments: Source transportation land ownership is a mixture of Federal, State and County.**New water well?** N**New Water Well Info****Well latitude:****Well Longitude:****Well datum:****Well target aquifer:****Est. depth to top of aquifer(ft):****Est thickness of aquifer:****Aquifer comments:****Aquifer documentation:****Well depth (ft):****Well casing type:****Well casing outside diameter (in.):****Well casing inside diameter (in.):****New water well casing?****Used casing source:****Drilling method:****Drill material:****Grout material:****Grout depth:****Casing length (ft.):****Casing top depth (ft.):****Well Production type:****Completion Method:****Water well additional information:****State appropriation permit:****Additional information attachment:****Section 6 - Construction Materials****Using any construction materials:** YES**Construction Materials description:** On site caliche will be used for construction if sufficient. In the event insufficient quantities of caliche are available onsite, caliche will be trucked in from BLM's caliche pit in SWSW Section 22-T24-R34E or NENE Section 20-T23S-R33E.**Construction Materials source location attachment:****Section 7 - Methods for Handling Waste****Waste type:** DRILLING**Waste content description:** Drilling fluids and cuttings**Amount of waste:** 3900 barrels**Waste disposal frequency :** Weekly**Safe containment description:** All drilling fluids will be stored safely and disposed of properly

Operator Name: KAISER FRANCIS OIL COMPANY**Well Name:** BELL LAKE UNIT SOUTH**Well Number:** 310H**Safe containmant attachment:****Waste disposal type:** HAUL TO COMMERCIAL FACILITY **Disposal location ownership:** COMMERCIAL**Disposal type description:****Disposal location description:** Cuttings will be hauled to R360's facility located in Section 27-T20S-R32E on US 62/180 at Halfway, NM**Waste type:** SEWAGE**Waste content description:** Human waste and grey water**Amount of waste:** 1000 gallons**Waste disposal frequency :** Weekly**Safe containment description:** Waste material will be stored safely and disposed of properly**Safe containmant attachment:****Waste disposal type:** HAUL TO COMMERCIAL FACILITY **Disposal location ownership:** COMMERCIAL**Disposal type description:****Disposal location description:** Trucked to an approved disposal facility (Carlsbad sewer plant SENW Section 10-T22S-R27E)**Waste type:** GARBAGE**Waste content description:** Miscellaneous trash**Amount of waste:** 500 pounds**Waste disposal frequency :** Weekly**Safe containment description:** Trash produced during drilling and completion operations will be collected in a trash container and disposed of properly**Safe containmant attachment:****Waste disposal type:** HAUL TO COMMERCIAL FACILITY **Disposal location ownership:** COMMERCIAL**Disposal type description:****Disposal location description:** Trucked to an approved disposal facility (Sandpoint Landfill (solid materials dump) NW/4 Section 11-T21S-R28E)**Reserve Pit****Reserve Pit being used?** NO**Temporary disposal of produced water into reserve pit?** NO**Reserve pit length (ft.)** **Reserve pit width (ft.)****Reserve pit depth (ft.)** **Reserve pit volume (cu. yd.)****Is at least 50% of the reserve pit in cut?****Reserve pit liner**

Operator Name: KAISER FRANCIS OIL COMPANY**Well Name:** BELL LAKE UNIT SOUTH**Well Number:** 310H**Reserve pit liner specifications and installation description**

Cuttings Area

Cuttings Area being used? NO**Are you storing cuttings on location?** Y**Description of cuttings location** Cuttings will be stored in roll off bins and hauled to R360 located in Section 27-T20S-R32E on US 62/180 near Halfway.**Cuttings area length (ft.)****Cuttings area width (ft.)****Cuttings area depth (ft.)****Cuttings area volume (cu. yd.)****Is at least 50% of the cuttings area in cut?****WCuttings area liner****Cuttings area liner specifications and installation description**

Section 8 - Ancillary Facilities

Are you requesting any Ancillary Facilities?: N**Ancillary Facilities attachment:****Comments:**

Section 9 - Well Site Layout

Well Site Layout Diagram:

BLUS_Pad_8_Drilling_Layout_20200714145219.pdf

BELL_LAKE_UNIT_SOUTH_310H_Wellsite_Layout_20200716101755.pdf

Comments:

Section 10 - Plans for Surface Reclamation

Type of disturbance: New Surface Disturbance**Multiple Well Pad Name:** SOUTH BELL LAKE UNIT**Multiple Well Pad Number:** 8**Recontouring attachment:**

BLUS_Pad_8_IR_Plat_20200714145457.pdf

Drainage/Erosion control construction: During construction proper erosion control methods will be used to control erosion, runoff and siltation of the surrounding area.**Drainage/Erosion control reclamation:** Proper erosion control methods will be used on the area to control erosion, runoff and siltation of the surrounding area.

Operator Name: KAISER FRANCIS OIL COMPANY

Well Name: BELL LAKE UNIT SOUTH

Well Number: 310H

Well pad proposed disturbance (acres): 5.97	Well pad interim reclamation (acres): 0.73	Well pad long term disturbance (acres): 5.24
Road proposed disturbance (acres): 0.2496	Road interim reclamation (acres): 0	Road long term disturbance (acres): 0.2496
Powerline proposed disturbance (acres): 0	Powerline interim reclamation (acres): 0	Powerline long term disturbance (acres): 0
Pipeline proposed disturbance (acres): 0	Pipeline interim reclamation (acres): 0	Pipeline long term disturbance (acres): 0
Other proposed disturbance (acres): 0	Other interim reclamation (acres): 0	Other long term disturbance (acres): 0
Total proposed disturbance: 6.2196	Total interim reclamation: 0.73	Total long term disturbance: 5.4896

Disturbance Comments:

Reconstruction method: The areas planned for interim reclamation will then be recontoured to the original contour if feasible, or if not feasible, to an interim contour that blends with the surrounding topography as much as possible. Where applicable, the fill material of the well pad will be backfilled into the cut to bring the area back to the original contour. The interim cut and fill slopes prior to re-seeding will not be steeper than a 3:1 ratio, unless the adjacent native topography is steeper. Note: Constructed slopes may be much steeper during drilling, but will be recontoured to the above ratios during interim reclamation.

Topsoil redistribution: Topsoil will be evenly respread and aggressively revegetated over the entire disturbed area not needed for all-weather operations

Soil treatment: To seed the area, the proper BLM seed mixture, free of noxious weeds, will be used. Final seedbed preparation will consist of contour cultivating to a depth of 4 to 6 inches within 24 hours prior to seeding, dozer tracking, or other imprinting in order to break the soil crust and create seed germination micro-sites.

Existing Vegetation at the well pad: The historic climax plant community is a grassland dominated by black grama, dropseeds, and blue stems with sand sage and shinnery oak distributed evenly throughout. Current landscape displays mesquite, shinnery oak, yucca, desert sage, fourwing saltbush, snakeweed, and bunch grasses

Existing Vegetation at the well pad attachment:

Existing Vegetation Community at the road: Refer to "Existing Vegetation at the well pad"

Existing Vegetation Community at the road attachment:

Existing Vegetation Community at the pipeline: Refer to "Existing Vegetation at the well pad"

Existing Vegetation Community at the pipeline attachment:

Existing Vegetation Community at other disturbances: None

Existing Vegetation Community at other disturbances attachment:

Non native seed used? N

Non native seed description:

Seedling transplant description:

Will seedlings be transplanted for this project? N

Seedling transplant description attachment:

Will seed be harvested for use in site reclamation? N

Operator Name: KAISER FRANCIS OIL COMPANY**Well Name:** BELL LAKE UNIT SOUTH**Well Number:** 310H**Seed harvest description:****Seed harvest description attachment:****Seed Management****Seed Table****Seed Summary****Total pounds/Acre:****Seed Type****Pounds/Acre****Seed reclamation attachment:****Operator Contact/Responsible Official Contact Info****First Name:****Last Name:****Phone:****Email:****Seedbed prep:****Seed BMP:****Seed method:****Existing invasive species?** N**Existing invasive species treatment description:****Existing invasive species treatment attachment:****Weed treatment plan description:** No invasive species present. Standard regular maintenance to maintain a clear location and road.**Weed treatment plan attachment:****Monitoring plan description:** Identify areas supporting weeds prior to construction; prevent the introduction and spread of weeds from construction equipment during construction; and contain weed seeds and propagules by preventing segregated topsoil from being spread to adjacent areas. No invasive species present. Standard regular maintenance to maintain a clear location and road.**Monitoring plan attachment:****Success standards:** To maintain all disturbed areas as per Gold Book standards**Pit closure description:** N/A**Pit closure attachment:****Section 11 - Surface Ownership**

Operator Name: KAISER FRANCIS OIL COMPANY

Well Name: BELL LAKE UNIT SOUTH

Well Number: 310H

Disturbance type: WELL PAD

Describe:

Surface Owner: STATE GOVERNMENT

Other surface owner description:

BIA Local Office:

BOR Local Office:

COE Local Office:

DOD Local Office:

NPS Local Office:

State Local Office: NM STATE LAND OFFICE, 602 N CANAL ST B, CARLSBAD, NM 88220

Military Local Office:

USFWS Local Office:

Other Local Office:

USFS Region:

USFS Forest/Grassland:

USFS Ranger District:

Disturbance type: NEW ACCESS ROAD

Describe:

Surface Owner: STATE GOVERNMENT

Other surface owner description:

BIA Local Office:

BOR Local Office:

COE Local Office:

DOD Local Office:

NPS Local Office:

State Local Office: NM STATE LAND OFFICE, 602 N CANAL STE B, CARLSBAD NM 88220

Military Local Office:

USFWS Local Office:

Other Local Office:

USFS Region:

USFS Forest/Grassland:

USFS Ranger District:

Operator Name: KAISER FRANCIS OIL COMPANY

Well Name: BELL LAKE UNIT SOUTH

Well Number: 310H

Section 12 - Other Information

Right of Way needed? N

Use APD as ROW?

ROW Type(s):

ROW Applications

SUPO Additional Information:

Use a previously conducted onsite? Y

Previous Onsite information: As per email from William DeGrush of 10/23/2018, an onsite was not required. Fee-Fee-Fed guidance.

Other SUPO Attachment



U.S. Department of the Interior
BUREAU OF LAND MANAGEMENT

PWD Data Report

12/18/2020

APD ID: 10400059133

Submission Date: 07/17/2020

Operator Name: KAISER FRANCIS OIL COMPANY

Well Name: BELL LAKE UNIT SOUTH

Well Number: 310H

Well Type: OIL WELL

Well Work Type: Drill

Section 1 - General

Would you like to address long-term produced water disposal? NO

Section 2 - Lined Pits

Would you like to utilize Lined Pit PWD options? N

Produced Water Disposal (PWD) Location:

PWD surface owner:

PWD disturbance (acres):

Lined pit PWD on or off channel:

Lined pit PWD discharge volume (bbl/day):

Lined pit specifications:

Pit liner description:

Pit liner manufacturers information:

Precipitated solids disposal:

Describe precipitated solids disposal:

Precipitated solids disposal permit:

Lined pit precipitated solids disposal schedule:

Lined pit precipitated solids disposal schedule attachment:

Lined pit reclamation description:

Lined pit reclamation attachment:

Leak detection system description:

Leak detection system attachment:

Operator Name: KAISER FRANCIS OIL COMPANY

Well Name: BELL LAKE UNIT SOUTH

Well Number: 310H

Lined pit Monitor description:

Lined pit Monitor attachment:

Lined pit: do you have a reclamation bond for the pit?

Is the reclamation bond a rider under the BLM bond?

Lined pit bond number:

Lined pit bond amount:

Additional bond information attachment:

Section 3 - Unlined Pits

Would you like to utilize Unlined Pit PWD options? N

Produced Water Disposal (PWD) Location:

PWD disturbance (acres):

PWD surface owner:

Unlined pit PWD on or off channel:

Unlined pit PWD discharge volume (bbl/day):

Unlined pit specifications:

Precipitated solids disposal:

Describe precipitated solids disposal:

Precipitated solids disposal permit:

Unlined pit precipitated solids disposal schedule:

Unlined pit precipitated solids disposal schedule attachment:

Unlined pit reclamation description:

Unlined pit reclamation attachment:

Unlined pit Monitor description:

Unlined pit Monitor attachment:

Do you propose to put the produced water to beneficial use?

Beneficial use user confirmation:

Estimated depth of the shallowest aquifer (feet):

Does the produced water have an annual average Total Dissolved Solids (TDS) concentration equal to or less than that of the existing water to be protected?

TDS lab results:

Geologic and hydrologic evidence:

State authorization:

Unlined Produced Water Pit Estimated percolation:

Unlined pit: do you have a reclamation bond for the pit?

Operator Name: KAISER FRANCIS OIL COMPANY

Well Name: BELL LAKE UNIT SOUTH

Well Number: 310H

Is the reclamation bond a rider under the BLM bond?

Unlined pit bond number:

Unlined pit bond amount:

Additional bond information attachment:

Section 4 - Injection

Would you like to utilize Injection PWD options? N

Produced Water Disposal (PWD) Location:

PWD surface owner:

PWD disturbance (acres):

Injection PWD discharge volume (bbl/day):

Injection well mineral owner:

Injection well type:

Injection well number:

Injection well name:

Assigned injection well API number?

Injection well API number:

Injection well new surface disturbance (acres):

Minerals protection information:

Mineral protection attachment:

Underground Injection Control (UIC) Permit?

UIC Permit attachment:

Section 5 - Surface Discharge

Would you like to utilize Surface Discharge PWD options? N

Produced Water Disposal (PWD) Location:

PWD surface owner:

PWD disturbance (acres):

Surface discharge PWD discharge volume (bbl/day):

Surface Discharge NPDES Permit?

Surface Discharge NPDES Permit attachment:

Surface Discharge site facilities information:

Surface discharge site facilities map:

Section 6 - Other

Would you like to utilize Other PWD options? N

Produced Water Disposal (PWD) Location:

PWD surface owner:

PWD disturbance (acres):

Other PWD discharge volume (bbl/day):

Operator Name: KAISER FRANCIS OIL COMPANY

Well Name: BELL LAKE UNIT SOUTH

Well Number: 310H

Other PWD type description:

Other PWD type attachment:

Have other regulatory requirements been met?

Other regulatory requirements attachment:



U.S. Department of the Interior
BUREAU OF LAND MANAGEMENT

Bond Info Data Report

12/18/2020

APD ID: 10400059133

Submission Date: 07/17/2020

Highlighted data
reflects the most
recent changes

Operator Name: KAISER FRANCIS OIL COMPANY

Well Name: BELL LAKE UNIT SOUTH

Well Number: 310H

[Show Final Text](#)

Well Type: OIL WELL

Well Work Type: Drill

Bond Information

Federal/Indian APD: FED

BLM Bond number: WYB000055

BIA Bond number:

Do you have a reclamation bond? NO

Is the reclamation bond a rider under the BLM bond?

Is the reclamation bond BLM or Forest Service?

BLM reclamation bond number:

Forest Service reclamation bond number:

Forest Service reclamation bond attachment:

Reclamation bond number:

Reclamation bond amount:

Reclamation bond rider amount:

Additional reclamation bond information attachment:

State of New Mexico
Energy, Minerals and Natural Resources Department

Submit Electronically
Via E-permitting

Oil Conservation Division
1220 South St. Francis Dr.
Santa Fe, NM 87505

NATURAL GAS MANAGEMENT PLAN

This Natural Gas Management Plan must be submitted with each Application for Permit to Drill (APD) for a new or recompleted well.

Section 1 – Plan Description

Effective May 25, 2021

I. Operator: Kaiser-Francis Oil Company **OGRID:** 12361 **Date:** 12 / 7 / 2022

II. Type: ☒ Original ☐ Amendment due to ☐ 19.15.27.9.D(6)(a) NMAC ☐ 19.15.27.9.D(6)(b) NMAC ☐ Other.

If Other, please describe: _____

III. Well(s): Provide the following information for each new or recompleted well or set of wells proposed to be drilled or proposed to be recompleted from a single well pad or connected to a central delivery point.

Well Name	API	ULSTR	Footages	Anticipated Oil BBL/D	Anticipated Gas MCF/D	Anticipated Produced Water BBL/D
Bell Lake Unit South 310	30-025-50917	UL-G Sec 6-T24S-R34E	1430FNL 2445FEL	1800	3000	2000

IV. Central Delivery Point Name: pad site [See 19.15.27.9(D)(1) NMAC]

V. Anticipated Schedule: Provide the following information for each new or recompleted well or set of wells proposed to be drilled or proposed to be recompleted from a single well pad or connected to a central delivery point.

Well Name	API	Spud Date	TD Reached Date	Completion Commencement Date	Initial Flow Back Date	First Production Date
Bell Lake Unit South 310	30-025-50917	TBD	TBD	TBD	TBD	TBD

VI. Separation Equipment: ☒ Attach a complete description of how Operator will size separation equipment to optimize gas capture.

VII. Operational Practices: ☒ Attach a complete description of the actions Operator will take to comply with the requirements of Subsection A through F of 19.15.27.8 NMAC.

VIII. Best Management Practices: ☒ Attach a complete description of Operator's best management practices to minimize venting during active and planned maintenance.

Kaiser-Francis Oil Company Natural Gas Management Plan

Plan Description

VI. Separation Equipment

Separation equipment will be designed for maximum anticipated throughput and pressure to minimize waste.

VII. Operational Practices

A. VENTING AND FLARING OF NATURAL GAS

Kaiser-Francis Oil Company (KFOC) will maximize the recovery of natural gas by minimizing the waste of natural gas through venting and flaring during drilling, completion, and production operations as outlined in 19.15.27.8 NMAC. KFOC will flare rather than vent natural gas except when flaring is technically infeasible or would pose a safety risk and venting is a safer alternative than flaring. KFOC will ensure well(s) are connected to a natural gas gathering system with sufficient capacity to transport natural gas.

B. Venting and flaring during drilling operations

KFOC will combust natural gas brought to the surface during drilling operations. A properly sized flare stack will be located at a minimum of 100 feet from the nearest surface hole location. In case of emergency or malfunction, KFOC will report natural gas volumes, vented or flared.

C. Venting and flaring during completion or recompletion operations

During completion operations, KFOC will flare natural gas brought to the surface and commence operation of a separator once technically feasible. Produced natural gas from separation equipment will be sold. If natural gas does not meet gathering pipeline quality specifications, KFOC will flare for no more than 60 days or until the natural gas meets the pipeline quality specifications, whichever is sooner.

D. Venting and flaring during production operations

KFOC will not vent or flare natural gas during production, except for provisions defined by 19.15.27.8.D (1) through (4). KFOC will report natural gas volumes, vented or flared, appropriately.

E. Performance Standards

KFOC will comply with performance standards outlined in 19.15.27.8.E to minimize waste. Separation equipment will be designed for maximum anticipated throughput and pressure to minimize waste. Any permanent storage tank associated with production operations that is

routed to a flare or control device will be equipped with an automatic gauging system that reduces the venting of natural gas. KFOC will combust natural gas in a flare stack that is properly sized and designed to ensure proper combustion efficiency. Flare stacks will be equipped with an automatic ignitor or continuous pilot. KFOC will conduct an AVO inspection on the frequency specified in Subsection D of 19.15.27.8 NMAC. All emergencies will be resolved as quickly and safely as feasible.

F. Measurement or estimation of vented or flared natural gas

KFOC will measure or estimate natural gas that is vented, flared, or beneficially used during drilling, completion, and production operations. Equipment will be installed to measure the volume of natural gas flared from existing piping or a flowline piped from equipment such as high-pressure separators, heater treaters, or vapor recovery units associated with a well or facility, authorized by an APD issued after May 25, 2021, that has an average daily production greater than 60,000 cubic feet of natural gas. Measuring equipment will conform to an industry standard. Where measuring is not feasible, volumes will be estimated.

VIII. Best Management Practices

During active and planned maintenance, venting will be limited to the depressurization of the equipment to ensure safe working conditions. For maintenance of production and compression equipment the associated producing wells will be shut-in to eliminate venting. During VRU maintenance, gas normally routed to the VRU will be flared.

Section 2 – Enhanced Plan

EFFECTIVE APRIL 1, 2022

Beginning April 1, 2022, an operator that is not in compliance with its statewide natural gas capture requirement for the applicable reporting area must complete this section.

☒ Operator certifies that it is not required to complete this section because Operator is in compliance with its statewide natural gas capture requirement for the applicable reporting area.

IX. Anticipated Natural Gas Production:

Well	API	Anticipated Average Natural Gas Rate MCF/D	Anticipated Volume of Natural Gas for the First Year MCF

X. Natural Gas Gathering System (NGGS):

Operator	System	ULSTR of Tie-in	Anticipated Gathering Start Date	Available Maximum Daily Capacity of System Segment Tie-in

XI. Map. ☐ Attach an accurate and legible map depicting the location of the well(s), the anticipated pipeline route(s) connecting the production operations to the existing or planned interconnect of the natural gas gathering system(s), and the maximum daily capacity of the segment or portion of the natural gas gathering system(s) to which the well(s) will be connected.

XII. Line Capacity. The natural gas gathering system ☐ will ☐ will not have capacity to gather 100% of the anticipated natural gas production volume from the well prior to the date of first production.

XIII. Line Pressure. Operator ☐ does ☐ does not anticipate that its existing well(s) connected to the same segment, or portion, of the natural gas gathering system(s) described above will continue to meet anticipated increases in line pressure caused by the new well(s).

☐ Attach Operator's plan to manage production in response to the increased line pressure.

XIV. Confidentiality: ☐ Operator asserts confidentiality pursuant to Section 71-2-8 NMSA 1978 for the information provided in Section 2 as provided in Paragraph (2) of Subsection D of 19.15.27.9 NMAC, and attaches a full description of the specific information for which confidentiality is asserted and the basis for such assertion.

Section 3 - Certifications

Effective May 25, 2021

Operator certifies that, after reasonable inquiry and based on the available information at the time of submittal:

☒ Operator will be able to connect the well(s) to a natural gas gathering system in the general area with sufficient capacity to transport one hundred percent of the anticipated volume of natural gas produced from the well(s) commencing on the date of first production, taking into account the current and anticipated volumes of produced natural gas from other wells connected to the pipeline gathering system; or

☐ Operator will not be able to connect to a natural gas gathering system in the general area with sufficient capacity to transport one hundred percent of the anticipated volume of natural gas produced from the well(s) commencing on the date of first production, taking into account the current and anticipated volumes of produced natural gas from other wells connected to the pipeline gathering system.

If Operator checks this box, Operator will select one of the following:

Well Shut-In. ☐ Operator will shut-in and not produce the well until it submits the certification required by Paragraph (4) of Subsection D of 19.15.27.9 NMAC; or

Venting and Flaring Plan. ☐ Operator has attached a venting and flaring plan that evaluates and selects one or more of the potential alternative beneficial uses for the natural gas until a natural gas gathering system is available, including:

- (a) power generation on lease;
- (b) power generation for grid;
- (c) compression on lease;
- (d) liquids removal on lease;
- (e) reinjection for underground storage;
- (f) reinjection for temporary storage;
- (g) reinjection for enhanced oil recovery;
- (h) fuel cell production; and
- (i) other alternative beneficial uses approved by the division.

Section 4 - Notices


1. If, at any time after Operator submits this Natural Gas Management Plan and before the well is spud:

(a) Operator becomes aware that the natural gas gathering system it planned to connect the well(s) to has become unavailable or will not have capacity to transport one hundred percent of the production from the well(s), no later than 20 days after becoming aware of such information, Operator shall submit for OCD's approval a new or revised venting and flaring plan containing the information specified in Paragraph (5) of Subsection D of 19.15.27.9 NMAC; or

(b) Operator becomes aware that it has, cumulatively for the year, become out of compliance with its baseline natural gas capture rate or natural gas capture requirement, no later than 20 days after becoming aware of such information, Operator shall submit for OCD's approval a new or revised Natural Gas Management Plan for each well it plans to spud during the next 90 days containing the information specified in Paragraph (2) of Subsection D of 19.15.27.9 NMAC, and shall file an update for each Natural Gas Management Plan until Operator is back in compliance with its baseline natural gas capture rate or natural gas capture requirement.

2. OCD may deny or conditionally approve an APD if Operator does not make a certification, fails to submit an adequate venting and flaring plan which includes alternative beneficial uses for the anticipated volume of natural gas produced, or if OCD determines that Operator will not have adequate natural gas takeaway capacity at the time a well will be spud.

I certify that, after reasonable inquiry, the statements in and attached to this Natural Gas Management Plan are true and correct to the best of my knowledge and acknowledge that a false statement may be subject to civil and criminal penalties under the Oil and Gas Act.

Signature: 
Printed Name: Aaron Daniels
Title: EHS Manager
E-mail Address: aarond@kfoc.net
Date: 12/7/2022
Phone: 918-491-4352
OIL CONSERVATION DIVISION (Only applicable when submitted as a standalone form)
Approved By:
Title:
Approval Date:
Conditions of Approval:

District I

1625 N. French Dr., Hobbs, NM 88240
Phone:(575) 393-6161 Fax:(575) 393-0720

District II

811 S. First St., Artesia, NM 88210
Phone:(575) 748-1283 Fax:(575) 748-9720

District III

1000 Rio Brazos Rd., Aztec, NM 87410
Phone:(505) 334-6178 Fax:(505) 334-6170

District IV

1220 S. St Francis Dr., Santa Fe, NM 87505
Phone:(505) 476-3470 Fax:(505) 476-3462

State of New Mexico
Energy, Minerals and Natural Resources
Oil Conservation Division
1220 S. St Francis Dr.
Santa Fe, NM 87505

CONDITIONS

Action 165276

CONDITIONS

Operator: KAISER-FRANCIS OIL CO PO Box 21468 Tulsa, OK 74121146	OGRID: 12361
	Action Number: 165276
	Action Type: [C-101] BLM - Federal/Indian Land Lease (Form 3160-3)

CONDITIONS

Created By	Condition	Condition Date
pkautz	Will require a File As Drilled C-102 and a Directional Survey with the C-104	1/4/2023
pkautz	Once the well is spud, to prevent ground water contamination through whole or partial conduits from the surface, the operator shall drill without interruption through the fresh water zone or zones and shall immediately set in cement the water protection string	1/4/2023
pkautz	Oil base muds are not to be used until fresh water zones are cased and cemented providing isolation from the oil or diesel. This includes synthetic oils. Oil based mud, drilling fluids and solids must be contained in a steel closed loop system	1/4/2023
pkautz	Cement is required to circulate on both surface and intermediate1 strings of casing	1/4/2023