

Submit a Copy To Appropriate District  
Office  
District I – (575) 393-6161  
1625 N. French Dr., Hobbs, NM 88240  
District II – (575) 748-1283  
811 S. First St., Artesia, NM 88210  
District III – (505) 334-6178  
1000 Rio Brazos Rd., Aztec, NM 87410  
District IV – (505) 476-3460  
1220 S. St. Francis Dr., Santa Fe, NM  
87505

State of New Mexico  
Energy, Minerals and Natural Resources

Form C-103  
Revised July 18, 2013

OIL CONSERVATION DIVISION  
1220 South St. Francis Dr.  
Santa Fe, NM 87505

WELL API NO. 30-025-46685
5. Indicate Type of Lease STATE <input type="checkbox"/> FEE <input checked="" type="checkbox"/>
6. State Oil & Gas Lease No.
7. Lease Name or Unit Agreement Name Cyclone Fed SWD
8. Well Number 1
9. OGRID Number 308339
10. Pool name or Wildcat

<p><b>SUNDRY NOTICES AND REPORTS ON WELLS</b> (DO NOT USE THIS FORM FOR PROPOSALS TO DRILL OR TO DEEPEN OR PLUG BACK TO A DIFFERENT RESERVOIR. USE "APPLICATION FOR PERMIT" (FORM C-101) FOR SUCH PROPOSALS.)</p>	
1. Type of Well: Oil Well <input type="checkbox"/> Gas Well <input checked="" type="checkbox"/> Other	
2. Name of Operator OWLSWD Operating LLC	
3. Address of Operator 200 N. Loraine St. Suite 206 Midland, TX 79701	
4. Well Location Unit Letter <u>H</u> : _____ feet from the _____ North _____ line and _____ 291 _____ feet from the _____ East _____ line Section 11 Township 25S Range 32E NMPM County Lea	
11. Elevation (Show whether DR, RKB, RT, GR, etc.) 3544' RKB	

12. Check Appropriate Box to Indicate Nature of Notice, Report or Other Data

<p><b>NOTICE OF INTENTION TO:</b></p> <p>PERFORM REMEDIAL WORK <input type="checkbox"/> PLUG AND ABANDON <input type="checkbox"/></p> <p>TEMPORARILY ABANDON <input type="checkbox"/> CHANGE PLANS <input type="checkbox"/></p> <p>PULL OR ALTER CASING <input type="checkbox"/> MULTIPLE COMPL <input type="checkbox"/></p> <p>DOWNHOLE COMMINGLE <input type="checkbox"/></p> <p>CLOSED-LOOP SYSTEM <input type="checkbox"/></p> <p>OTHER: <input type="checkbox"/></p>		<p><b>SUBSEQUENT REPORT OF:</b></p> <p>REMEDIAL WORK <input checked="" type="checkbox"/> ALTERING CASING <input type="checkbox"/></p> <p>COMMENCE DRILLING OPNS. <input type="checkbox"/> P AND A <input type="checkbox"/></p> <p>CASING/CEMENT JOB <input type="checkbox"/></p> <p>OTHER: <input type="checkbox"/></p>	
---	--	---	--

13. Describe proposed or completed operations. (Clearly state all pertinent details, and give pertinent dates, including estimated date of starting any proposed work). SEE RULE 19.15.7.14 NMAC. For Multiple Completions: Attach wellbore diagram of proposed completion or recompletion.

12/7/22

FILL FRAC TANKS W/PRODUCED WATER FROM TANK BATTERY. MIRU CARDINAL 2 5/8" CTU. SHOOT FLUID LEVELS ON 7" ANNULUS AND INSIDE 7" - ANNULUS FLUID LEVEL AT 5912' W/3633 PSI - 7" TBG FLUID LEVEL AT 797' W/3727 PSI. ND SWD FLOW CROSS - INSTALL CT BOP STACK - RU CTU - MAKE UP TOOLS WELD ON CONNECTOR, DUAL BP VALVE, HAILEY JARS, HYDRAULIC DISCONNECT AND HIGH VELOCITY WASH NOZZLE. PRESSURE TEST BOP STACK & FB IRON TO 4000 PSI. OPEN WELL RIH WITH COIL WASHING DOWN AT 50 FPM AND 1 TO 4.5 BPM WITH 1/2 TO 5 BPM RETURNS. WASH DOWN TO 14,390' - TAG UP - PICK UP TO 14,000' - PUMP 10 BBL SWEEP & WASH BACK DOWN. WASH DOWN TO 15,000' AND PUMP 10 BBL SWEEP. MAKE 500' SHORT TRIP. PUMPING 4.5BPM WITH 4,700 PSI CP. WHP - 1000 PSI.

12/8/22

CONTINUE RIH WASHING DOWN TBG. TAGGED XN NIPPLE AT 17,346' CTM. PICKING UP OFF OF NIPPLE PIPE PULLED HEAVY. PICK UP 4' OFF OF NIPPLE AND BEGIN PUMPING ACID. WAIT FOR ACID TO REACH JET NOZZLE ANND BEGIN POOH SLOWLY. PUMP TOTAL OF 8,000 GAL 7.5% HCL. POOH TO SURFACE PUMPING 4.5 BPM AND GETTING 4.5 BPM RETURNS. CP- 3,900 PSI, WHP- 500 PSI. 9 5/8"- 2,950 PSI. SWI.REMOVE HYD DISC AND JARS. REPLACE JET NOZZLE WITH 1" ID NOZZLE. RIH PUMPING 1.5 BPM. MIRU CUDD BLENDER AND PUMP. AT 17,342' SHUT DOWN PUMP - HOOK UP CUDD AND PUMP 3 BPM WITH 2 PPG SAND - ONCE SAND AT THE END OF CT BEGIN POOH AT 50 FPM - SPOT 27,000# SAND FROM 17,342' TO 12,000' - CONTINUE TO POOH WITH CT AT 50 FPM WITH 1.5 BPM @ 2800# IN AND 1 TO 1.5 BPM @ 850#-1150# WHP, AT 7500' SHUT IN ANNULUS, PUMP 1 BPM AT 2200# DOWN COIL AND INCREASE POOH TO 100 FPM. COIL AT THE SURFACE - SHUT WELL IN & STAND BACK COIL. RD CUDD PUMP AND BLENDER. PREP TO RU WIRELINE.

12/9/22

MIRU TWG WIRELINE UNIT AND TECHWELL SURVEYS TOOLS. MU AND RIH W/ CCL, ACCOUSTIC LOG, AND TEMP LOG. RUN TEMP LOG FROM SURFACE TO 10,000'. POOH STOPPING EVERY 200' AND LOGGING SOUND. OPEN CSG TO TANK ON 12/64" CK AT 17:00 WORKING CK UP TO 16/64. RUN LOGS AGAIN WHILE FLOWING UP 9 5/8" CSG. SAW ANOMOLIES AT APPX 7600' AND AN INCREASE IN NOISE AT 11,500' - SEE LOG FOR DETAILS - POOH W/TOOLS. RIH WITH CCL/GR & SINKER BAR - MAKE IT TO 16,875' AND DID NOT TAG SAND - RAN OUT OF LINE ON TRUCK AND LINE WAS FOULING AND NOT SPOOLING WELL - COULD NOT GO FURTHER AND COULD NOT MAKE ANOTHER RUN - POOH W/TOOLS. RD TWG TRUCK AND WAIT ON ANOTHER TRUCK. RU 2ND TWG TRUCK.

RIH WITH CCL, WT BARS AND 2.75" GR. TIE IN WITH PACKER AT 17,331'. CONTINUE IN HOLE AND TAG FILL AT 17,397'. LOG COLLAR STRIP ABOVE PACKER. POOH. BLOW REEL DRY ON CTU AND RDMO. WAIT ON CRANE. RU WIRELINE AND PERFORATE 5-1/2" TUBING AT 17325', 23', 21' & 19' W/ 1-9/16" GUN 6 SPF - 24 TOTAL HOLES. RD WIRELINE. NU FLOW CROSS. BLEED PRESSURE OFF TUBING. DUMP 600# SAND DOWN TUBING. SHUT WELL IN. FILL FRAC TANKS WITH 1400 BBL BRINE WATER. EMPTY FLOWBACK TANKS. PREP TO CIRCULATE BRINE WATER.

12/11/22

MIRU CUDD PUMP. TBG PRESS 350 PSI, CSG PRESS 100 PSI. KILL WELL BY PUMPING 1,026 BBLs 10# BRINE DOWN TBG WHILE FLOWING WELL UP CSG. ND WELLHEAD AND NU 11" 5K - 13 5/8" 10K DSA AND 13 5/8" SINGLE RAM BOP W/ BLIND RAMS INSTALLED. EMPTY ALL FRAC TANKS AND FB TANKS. SDON

12/12/22

CSG PRESS 0 PSI. RDMO FLOWBACK EQUIPMENT AND FRAC TANKS. RELEASE ALL RENTAL EQUIPMENT AND CLEAN LOCATION. BEGIN MIRU DRILLING RIG.

12/13/22

CONTINUE MIRU SAVANNA RIG 801.100% MOVED IN, 10% R/U. WAIT ON DAYLIGHT. PLAN FORWARD - DRILL MOUSE HOLE STARTING AM 12/13/2022, FINISH R/U.

12/14/22

DRILL NEW MOUSE HOLE, PER RIG SPECS. CONTINUE RU SAVANNA RIG 801. 65% R/U. NIGHT CREW PULLING WIRE & RIGGING UP SUB. PLAN FORWARD - CONTINUE R/U SUB & DERRICK + 3RD PARTY EQUIP. BRING IN 12.5 CACL BRINE.

12/15/22

HELD PJSM WITH HOOPER TRUCKING AND RIG CREW. OPEN A LEGS AND PINNED FLOOR. PINNED UP REMAINING SECTIONS OF THE DERRICK. MU STAND PIPE, LOWER KELLY HOSE, AND SERVICE LOOP WITH CRANE. BRING DRILL LINE TO DRUM AND TIE DOWN SAME. BRING BLOCK TO TOP DRIVE, YOKE UP TO BECKETT AND PINNED MONKEY BOARD. PERFORMED PRE-RAISE INSPECTION OF DERRICK. RAISED DERRICK AND PINNED TO FLOOR. RUN SERVICE LOOP FOR TOP DRIVE THRU FLOOR. PLUG IN CABLES TO FESTOON. UNPIN AND LOWER RAISING CYLINDERS. HELD PJSM WITH NIGHT CREW. RUN SERVICE FOR TOP DRIVE. SET BOP IN SUB. SET TRIP TANK, CATWALK AND ACCUMULATOR WITH TRUCKS. RAISED V-DOOR AND LINE UP TO RIG. RELEASED TRUCKS @ 22:00 HRS. RU RIG FLOOR. SET DEAD MAN AND SLIPPED DRILL LINE ON. CALIBRATED HIGH AND LOW STOP POINTS. FUNCTION TESTED CROWN SAVER. FUNCTION TEST TOP DRIVE. STARTED FILLING FRAC TANKS W/12.5 PPG COMPLETION FLUID. CONTINUE RIGGING UP 75% RIGGED UP.

12/16/22

HELD PJSM WITH RIG CREW AND 3RD PARTY ON LOCATION. CONNECT MUD LINES MPS,CM,TT, MTS, SP, RU FLARE STACK, MGS. NU ROTATING HEAD & ORBIT VALVE ASSY. ATTEMPTED TO RU BOP. NOT ENOUGH CLEARANCE TO RU WITHOUT WENCH, DUE TO THE HEIGHT OF THE BLINDS. ND ROTATING HEAD. ORDERED WENCHES FOR MONAHANDS ETA 9:30 AM. MODIFY FLOW LINE TO ADAPT TO PRUITS ORBIT VALVE FLANGE. FILLING FRAC TANKS W/12.5 PPG COMPLETION FLUID. TOTAL BBLs DELIVERED 1040 BBLs. FINISHED NU CHOKES. HELD PJSM WITH NIGHT CREW. FINISHED INSTALLING 4 1/2" SAVER SUB. FINISHED RU FLOW LINE TO MANIFOLD AND SHAKER SKIDS. GROUNDED RIG. STARTED ACCUMULATOR AND FUNCTION TESTED UPPER AND LOWER RAMS. OPENED DOORS ON BOP AND CHANGED RAMS TO VARIABLE 4.5" - 7" UPPER AND LOWER. REPLACE FACE SEALS. REMOVED SPOOL ON TOP OF ANNULAR FOR SPACING. INSTALLED SUPER CHOKE ON TO CHOKE MANIFOLD. BLEED PRESSURE OFF ACCUMULATOR AND REMOVE LINES TO BRIDAL UP. CONTINUE RU. 95% RU.

12/17/22

HELD PJSM WITH RIG CREW AND 3RD PARTY ON LOCATION. RU 3RD PARTY WINCH OVER HOLE TO PU BOP STACK. ATTEMPTED TO SET STACK ON WELLHEAD AND SINGLE BLIND. NOT ENOUGH ROOM TO SET UNDER SUBSTRUCTURE IN ONE PIECE WITH WINCHES. LAYED STACK DOWN AND BROKE OUT ROTATING HEAD AND SPOOL. SET BOP STACK AND TORQUED ALL FLANGES. WILL FEED ROTATING HEAD THRU FLOOR LATER. RU HCR AND KILL LINES. RD WINCH LINES. SET MASTER BUSHING IN FLOOR. HELD PJSM WITH NIGHT CREW. RU HARDLINE FROM GAS BUSTER TO FLOW-LINE. RU ACCUMULATOR LINES TO BOP STACK AND PRESSURED UP KOOMEY. TESTED BLIND RAMS 5000 PSI HIGH AND 250 PSI LOW. GOOD TEST. PU JOINT OF 4.5 DP. TESTED LOWER AND UPPER 4.5" - 7" VARIABLES TO 5000 PSI HIGH AND 250 PSI LOW. GOOD TEST ON BOTH. TESTED ANNULAR TO 3500 PSI HIGH AND 250 PSI LOW. GOOD TEST. TESTED CHOKE MANIFOLD AND LINES. HAD SEVERAL LEAKS. FINISH REPAIRING LEAKS ON THE GAS BUSTER AND RETURN LINE. PREP TO KILL WELL.

12/18/22

HELD PJSM. TESTED PUMP LINES BACK TO MANIFOLD TO 5,000 PSI. MU BLEED OFF LINE FROM TRIP TANK TO STANDPIPE. PU ROTATING HEAD WITH ORBIT VALVE ASSY. RU FLOW LINE TO SHAKERS.TIE IN ACCUMULATOR LINES. BOLT ON KILL LINE VALVE. CONNECTED ORBIT VALVE CONTROL BOX. OPENED LOWER SET OF BLINDS TO CHOKE MANIFOLD. OPEN SITP 500 PSI. STARTED PUMPING 12.5 PPG MUD W/PUMP #2 @ 1 BPM 100 PSI. WHILE PUMPING DOWN 7" TUBING AND TAKING RETURNS FROM 9 5/8" CASING, SEPARATOR WAS CARRYING OVER LIQUIDS TO FLARE. SHUT DOWN TO WORK ON PUMPS AND GAS BUSTER. STARTED PUMPING 1.5 BPM @ 55 PSI, WORKING UP RATE TO ESTABLISH 5 OR 6 BPM 80-90% RETURNS. PUMPED 890 BBLs 12.5 BRINE AND LOST FULL RETURNS. SD FOR 30 MINUTES TO MONITOR PRESSURES. WELL STILL FLOWING. RESUMED PUMPING AND PUMPED A TOTAL 200 ADDITIONAL BBLs WITH 70% RETURNS AND LOST RETURNS. WELL DEAD AND STATIC (PUMPED TOTAL OF 1090 BBLs). MADE DECISION TO ATTEMPT TO RELEASE LATCH SEAL ASSY FROM PACKER. HELD PJSM. PU 1 JNT - 7" 29# LTC CASING AND SCREW INTO LANDING PUP. PU AND WORKED PIPE FROM 385K TO 420K (TUBING NEUTRAL +/- 390K). WORKED AND TORQUED TUBING FOR 3 HOURS IN ATTEMPT TO RELEASE PACKER. AT REPORT TIME CONTINUE ATTEMPTING TO RELEASE LATCH SEAL ASSY.

12/19/22

SICP 0 PSI. HELD PJSM. WORK PIPE FROM 425K TO 387K ROTATE AT 15 RPM WITH 7K MAX TORQUE. INCREASED ROTARY TRQ TO 9K AND WORKED CASING, WHILE HOLDING TORQUE. RECIEVED AUTHORITY TO BRING UP TRQ TO 14K IN 1000 FT/LB INCREMENTS, WORKING PIPE FROM 385K TO 440K. SLIPS STARTED SLIPPING DOWN CASING AND HINDERING SLACK-OFF. ORDERED MONAHANS WINCH LINES TO PICK UP BOP. NIPPLE DOWN FLOW LINE WITH ORBIT VALVE FROM ROT HEAD ASSEMBLY. REMOVED HCR LINE. ND OPERATOR BLIND RAM FROM WELL HEAD AND PU BOP STACK. REMOVED CASING SLIPS FROM CASING HEAD. RESET AND BOLTED BOP BACK ON CASING HEAD. RE-TIED HCR, ORBIT VALVE AND FLOW LINE. HELD CREW CHANGE PJSM. FINISH INSTALLING FLOW-LINE AND ORBIT VALVE. WORKED PIPE FROM 340K TO 450K W/14K MAX TORQUE. WORKED TUBING TILL 02:30 AM. SECURED TUBING IN NEUTRAL WEIGHT. PREPARING TO RU PIPE RECOVERY UNIT @ 0700 AM TODAY.

12/20/22

SICP 0 PSI. HELD PJSM MEETING. RU E-LINE PIPE RECOVERY EQUIPMENT. RUN IN WITH 2.75" GR/CCL. CORRELATED TO PACKER @ 17,325' AND TAGGED SAND PLUG @ 17,329'. POOH AND LD TOOLS. WAIT ON CASING CREW TO CHANGE OUT COLLAR ON PULL JOINT, DUE TO GAULDED THREADS. CASING CREW ARRIVED ON LOCATION AND CHANGED OUT GAULDED 7" LTC COUPLING. RUN E-LINE TOOLS THRU TOP DRIVE AND RU PACK-OFF. RIH W/4.07" JET CUTTER AND SET DOWN @12,050' ELM (AT OR BELOW 7"X 5-1/2" XO). POOH & LD TOOLS. RD WIRELINE EQPT. M/U TOP DRIVE TO 7" LTC CASING. WORKED PIPE FROM 430K TO 350K W/16K TORQUE. NO LOST TORQUE. CONTINUED WORKING PIPE FROM 460K TO 345K. INCREASED TORQUE IN 1K INCREMENTS TO 21K. PIPE CAME FREE AT 374K HOOK LOAD. STATIC STRING WEIGHT 329K AFTER COMING FREE. RU CASING TONGS AND STARTED LD 7" LTC CASING.

12/21/22

SICP 0 PSI. HELD PJSM WITH CREW AND VENDORS. POOH W/7" LTC AND 7" ULTRA FJ TUBING. PULLED A TOTAL OF 290 JOINTS OF 7" ULRTA FJ AND 1- 7" UFJ X 5" 17# UFJ XO. HELD PJSM W/NIGHT CREW. LD ALL 7" INJECTION STRING CLEANED 7" WITH STEAMER FOR IN SPECTION IN A.M. NOTE: FILLED WELL W/5 BBLs OF 12.5 MUD FOR PIPE DISPLACEMENT EVERY 15 JOINTS WHILE POOH. CLEANED AND WASHED 7" UFJ. THREAD REP WILL INSPECT SAME THIS MORNING. DRIFTED AND TALLIED 108 JTS OF 4.5" 16.6 XO DP. RECIVED 185 JOINTS OF 4" VX-39 S135 DRILL PIPE AND HANDLING TOOLS. (OART) WAITING ON 2 3/8" PH-6 P-110 WS AND HANDLING TOOLS AND TTS FISHING TOOLS ABRASIVE CUTTER. OFF-LOADED 2 LOADS OF BRINE 11.5 MUD IN MUD TANKS.

12/22/22

SICP 0 PSI. HELD PJSM. CONTINUE BUILDING MOUSEHOLE STANDS W/4.5 XO DP. SERVICED TOP DRIVE. WAIT ON TTS CUTTER AND ASSOCIATED EQPT. HELD PJSM WITH NIGHT CREW AND TUBING MAKE-UP CREW. RU 2 3/8" HYDRIL PH6 HANDLING TOOLS AND TONGS. MU AND RIH W/ TTS 2.9" ABRASIVE JET CUTTER W/MULE SHOE BOTTOM, 1 JOINT 2 3/8" PH6, DUAL FLAPPER VALVE, 1 JNT 2-3/8 PH6, RN NIPPLE, 2 3/8" PH6 WS (TORQUING TO 3000 FT-LBS) . WILL RUN 5,271' OF 2 3/8" HYDRIL PH6 WS AND INSTALL ROTATING NO/GO, XO TO 4.5", 12,030' OF 4.5 XO DRILL PIPE TO BUMP UP ON TOP OF FISH WITH ROTATING NO/GO. CUTTER WILL BE @ 17,301' WHEN MAKING CUT ON 5 1/2" 17# UFJ (PKR/ANCHOR @ 17,331').

12/23/22

SICP 0 PSI. HELD PJSM. FINISHED TIH W/TTS ABRASIVE ROTARY CUTTER TO 5263'. RU CUTTER NO/GO ON JT #175 OF THE 2 3/8" PH-6 HYDRIL WS. ATTEMPTED TO BREAK CIRCULATION AND WORK STRING PRESSURED TO 6500 PSI. STRING PLUGGED. ATTEMPTED TO SURGE AND CLEAR 2 3/8" PH-6 HYDRIL TUBING STRING W/NO SUCCESS. PREPARE TO POOH, MOVING 4 1/2" XO DP TO SUPPORT THE 2 3/8" WS. PULLED AND STOOD BACK 45 STANDS OF 2 3/8 HYDRIL WS. SECURED STANDING TUBING W/CHAINS. HAD TO LD REMAINING 2-3/8 WS. EOT IS 543' AT REPORT TIME. GO FORWARD: WILL FINISH POOH W/2 3/8" WS. INSPECT BHA AND CLEAR BRIDGE. TIH WITH ABRASIVE CUTTER, FILTERING ALL FLUID AND FULLY DISPLACING PIPE AT EACH FILL-UP.

12/24/22

SICP 0 PSI. HELD PJSM. FINISHED TOH W/2 3/8" WS. LD LAST JOINT OF 2 3/8" PH6 WS AND CUTTER WITH BPV INSTALLED. BROKE OUT ABRASIVE JET CUTTER. CUTTER PORTS PLUGGED WITH SCALE, PIPE DOPE, AND CACL MUD WEIGHTING MATERIAL. MADE-UP MULE-SHOE BOTTOM ABRASIVE CUTTER AND TIH ON 5271' OF 2 3/8" PH6 WS AND INSTALLED NO/GO, FILLING TUBING EVERY 15 STANDS. HELD PJSM W/NIGHT CREW. CONTINUED TIH W/ ABRASIVE CUTTER ON 4.5 XO DP. RAN A TOTAL OF 214 JOINTS OF DP AND TAGGED TOF @ 12,021'. WORKED AND SLOW ROTATED CUTTER INTO 5-1/2" CASING FROM 12,021' TO 12,040' AND SAT DOWN W/5K COMPRESSION AND 1,500 TORQUE. NO DRAG OR OVER-PULL WHEN PICKING UP. MADE DECISION TO TOH WITH CUTTER. DEPTH AT REPORT TIME 9,841'.

12/25/22

SICP 0 PIS. HELD PJSM. CONTINUED TOH W/4.5" 16.6 XO DP AND 2 3/8" HYDRIL WS. ORDERED COMBO WLU FROM CINCH AND TTS SEVERING, TOOL TO CUT 5 1/2" UFJ. FINISHED TOH W/TTS ABRASIVE CUTTER. LD TTS TOOLS AND INSPECTED SAME. TOOLS HAD METAL MARKS ALONG SIDES AND METAL DAMAGE TO MULE SHOE BOTTOM. RU CINCH COMBO WIRELINE UNIT. PU 2 1/8" GR/JB AND RIH. TAGGED TOF @ 12,021' WLM. WORKED TOOLS DOWN TO 12,027'. STICKY BOTTOM: PU W/2500 OVER LINE WEIGHT TO PULL FREE. MADE SEVERAL ATTEMPTS TO GET DEEPER WITH NO SUCCESS. POOH W/WL TOOLS. PU 2.00" OD GR AND RIH W/TOOLS. TAGGED TOF @ 12,021' WLM. MADE SEVERAL ATTEMPTS TO GET THROUGH TIGHT SPOT IN TUBING. FINAL PU DEPTH @ 12,026' WLM. POH W/WL TOOLS AND INSPECTED SAME. NEITHER SET OF TOOLS HAD METAL MARKS. RDMO CINCH. RU PROTORQUE TUBING TONG CREW. RIG LOST BOTH RIG GENERATORS FOR 4 HOURS. MADE REPAIRS AND TESTED BOTH GENERATORS. RESUMED RIH W/PH6 WS @ 0415 A.M. AT REPORT TIME, TUBING DEPTH 3,095'. WILL CONTINUE RIH AND LAYING DOWN 2 3/8" PH6 WS.

12/26/22

SICP 0 PIS. HELD PJSM. CONTINUE RIH W/ REMAINING 2 3/8" PH6 WS OUT OF DERRICK. POOH LD 2 3/8" HYDRIL WS. HELD PJSM W/NIGHT CREW. MU DRESSING BHA AS FOLLOWS: SKIRTED MILL (8.125" OD X 7"), XO SUB (6.25"OD X 1.8") TOTAL BHA = 8.80' FT. TIH ON 310 JTS OF 4.5" 16.6# XO DP. CURRENT DEPTH OF BHA @ 9,810' PM, CURRENT STRING WEIGHT 208K. (OART) CONTUNE RIH W/DRESSING BHA ON 4.5" XO DP.

12/27/22

SICP 0 PIS. HELD PJSM. CONTUNE TIH W/DRESSING BHA ON 4.5" XO DP. TAGGED TOF @ 12,006' PM. MILLED ON TOF FOR 5 HOURS, PUMPING 1 BPM. MADE 11' TO 12,017' FINAL DEPTH. HOLE FILLED WHILE PUMPING. ATTEMPTED TO CIRCULATE BOTTOMS UP. CONTUNED LOOSING RETURNS W/MAX RATE OF 1.5 BPM. BEGIN TOH TO 8,016' PM. CREW CHANGE. HELD PJSM. SERVICE RIG, TOP DRIVE AND CATWALK (1/2 HR). FINISHED TOH W/DRESSING BHA AND 4.5" DP. LD BHA AND INSPECTED SAME. PU LEAF SPRING CUTTER SHOE BHA AS FOLLOWS: CUTTER SHOE 4.84' X 7 5/8" OD X 6.875" ID, 3 JTS WP 95.94' X 7 5/8" OD X 6 5/8" ID, TOP SUB 1.02' X 6" OD AND XO 1.80' X 6 1/4" OD. TIH ON 4.5" 16.6 DP. DEPTH AT REPORT TIME 9,305' PM, SW 200K. (OART) CONTINUE TIH W/CUTTER BHA AND DP TO TOF @ 12,017' PM.

12/28/22

SICP 0 PSI. HELD PJSM. CONTINUE TIH W/CUTTER BHA AND DP TO TOF @ 12,013' PM. INSTALLED ROTATING HEAD RUBBER. CIRCULATED 1 BOTTOMS UP. WORKED CUTTER BHA TO A TOTAL DEPTH OF 12,027'. CUTTER GOT STUCK. PU OVER PULLED 50K AND TOOLS CAME FREE. PU AND CIRCULATED A BOTTOMS UP @ 8 BPM. RECOVERED MINIMAL AMOUNTS OF FIBERGLASS AND METAL IN RETURNS. HELD PJSM WITH NIGHT CREW. SERVICED RIG EQUIPMENT. TOH W/CUTTER BHA AND 4.5" 16.6# DP. INSPECTED TOOLS AND FOUND BOTTOM 1.11' OF CUTTER BHA, INCLUDING SPRING CUTTERS, HAD BROKEN OFF. PU 8 1/8" OVERSHOT, DRESSED WITH 5 1/2" GRAPPLE WITH MILL CONTROL. RIH W/193 JOINTS OF 4.5" 16.6# DP. CURRENT DEPTH AT REPORT TIME 6,000' PM. WILL CONTINUE TIH W/8 1/8" OS AND 4.5" DP TO TOF @ 12,013' PM.

12/29/22

SICP 0 PSI. HELD PJSM. CONTINUED TIH W/8-1/8" OVERSHOT, DRESSED WITH 5 1/2" GRAPPLE + MILL CONTROL. TIH TO 12,007' PM. CIRCULATED BU. STRING WEIGHT 225K. TAGGED TOF @ 12,013' AND SLACKED OFF 50K. PU TO 325K TO ENGAGE GRAPPLE AND SET SAME. WORKED DP FROM 260K TO 280K, WHILE WORKING LEFT HAND TORQUE (ROUNDS) INTO STRING, TO ATTEMPT MANUAL BO (MAX TORQUE 6,000 FT-LBS). PIPE CAME FREE WITH STRING WEIGHING 5-7K OVER ORIGINAL STRING WEIGHT. POOH W/FISHING ASSY. RECOVERED TOP SUB OF WELDED OVERSHOT WITH WELDS BROKEN ON FINE THREAD PORTION AND LOWER SECTION OF OS MISSING (NO 5-1/2" TBG RECOVERED). HELD PJSM W/NIGHT CREW. MU 7-5/8" OS DRESSED W/ 5 1/2" GRAPPLE AND MILL CONTROL, 4 1/2" XO X 4 1/2" IF (TOTAL LENGTH= 6.08'). TIH W/OS BHA ON 4.5" 16.6# DP. CURRENT DEPTH @ REPORT TIME 10,054' PM. (OART) CONTINUE RIH TO FISH 5 1/2" UFJ TUBING OR MAKE SECOND ATTEMPT ON BACK OFF.

12/30/22

SICP 0 PSI. HELD PJSM. TIH W/7 5/8" OS DRESSED W/5 1/2" GRAPPLE AND MILL CONTROL TO 12,007' PM. STRING WEIGHT 225K. WORKED OS DOWN TO TOP OF 5-1/2" TBG @ 12,013'. PU AND ENGAGED GRAPPLE. WORKED STRTING FROM 255K TO 275K. ATTEMPTED MANUAL BO WITH A MAX TORQUE OF 6,000 FT/LBS. BACKED OFF IN 4.5" DP. PU SRTRING WEIGHT 223K LOSS 2,000 LBS OF WEIGHT AND TORQUE. PUMPED TO VERIFY BO. SCREWED BACK INTO 4 1/2" DP. SLACKED OFF TO 218K AND RELEASED GRAPPLE. TOH W/7 5/8" OS BHA AND 4.5" 16.6# DP. LD OS BHA AND XO. HELD PJSM WITH NIGHT CREW. SERVICED RIG AND EQUIPMENT. WAIT ON 2 3/8" TUBING TONGS AND CREW, 4.375" OD BULL NOSE MILL, 3-1/2" DRILL COLLARS, JARS AND TOOLS TO RUN TTS ABRASIVE CUTTER. MU 3X 3-1/2" DRILL COLLARS AND STOOD BACK IN DERRICK. WHILE WAITING ON EQUIPMENT, RIH W/ 30 STANDS 4.5" DP TO RE-TIGHTEN CONNECTION THAT BROKE WHILE ATTEMPTING TO PERFORM MANUAL BO.

12/31/22

SICP 0 PSI. HELD PJSM. RU PROTORQUE CASING CREW. MU 4 3/8" OD BULL NOSE MILL, 2.99" OD ABRASIVE CUTTER, 2 - 3 1/2" SLICK OD DRILL COLLARS, 3 1/8" JARS AND 1 - 3 1/2" SLICK OD DRILL COLLAR (TOTAL BHA = 107.98'). TIH W/CUTTER BHA, PICKING UP 2-3/8" 5.95 PH6 WS. HELD PJSM WITH NIGHT CREW. CONTINUED TIH W/CUTTER BHA AND 2 3/8" PH6 WS (TOTAL CUTTING ASSY 5289' FROM NO/GO TO CUTTER). INSTALLED NO/GO AND XO TO 4.5 XO DP. TIH W/4.5" XO DP TO 11,900' PM. CIRCULATED AT 3 BPM @1175 PSI, STRING WEIGHT 173K. WASHED DOWN INTO TOP OF 5-1/2" TBG WHILE ROTAING 15-20 RPM, MAINTAINING 1.0 TO 2.0 POINTS ON 4 3/8" OD MILL. LIGHT TAG @ 12,013' PM. CONTINUED IN TO 12,020' PM. SAT DOWN 5 POINTS W/NO DRILL-OFF. PU W/NO OVER-PULL. INCREASED RPM TO 35 AND RUN 2-3 PNTS TO MILL THRU OBSTRUCTION. OART- MILL TOP 60' INTO 5 1/2" TUBING.

1/1/23

SICP 0 PSI. HELD PJSM. CONTINUE MILLING THROUGH 5 1/2" 17# UFJ W/4 3/8" OD BULL NOSE MILL, 2.99" OD ABRASIVE CUTTER, 2 - 3 1/2" SLICK OD DRILL COLLARS, 3 1/8" JARS AND 1 - 3 1/2" SLICK OD DRILL COLLAR (TOTAL BHA = 107.98'). MILLED FROM TOF @ 12,020' PM TO 12,043' PM. LOST RETURNS TWICE AND RE-ESTABLISHED. PUMPED 2 POLYMER SWEEPS. RECOVERED SMALL AMOUNTS OF METAL SHAVINGS, IRON SULFIDE SCALE, AND CALCIUM CARBONATE WEIGHT MATERIAL IN SWEEP #1. HAD NO RECOVERY IN SWEEP #2. HELD PJSM W/NIGHT CREW. DROPPED .938" OD BALL. PUMPED A TOTAL OF 185 BBLS WITH NO BALL SEAT. DROPPED 2ND .938" OD BALL. PUMPED 180 BBLS WITH NO BALL SEAT. CIRCULATED FOR 2.5 HOUR WHILE WAITING ON 1 1/4" BALL. DROPPED 1 1/4" BALL AND DISPLACED DP AND WS WITH 160 BBLS WITH NO BALL SEAT. LOST 1600 PSI ON LAST BALL DROP. FINAL RATE 2.2 BPM W/350 PSI. NO NOTICABLE CHANGE IN STRING WEIGHT. SD PUMPS AND CIRCULATING. START POOH W/4.5" DP, 2 3/8" HYDRIL WS, MILLING AND CUTTER BHA @ 02:00 A.M. PUMPED 5 BBLS OF MUD FOR PIPE DISPLACEMENT EVERY 15 STANDS. CURRENT DEPTH @ REPORT TIME 5,300' PM. (OART) RU PROTORQUE TUBING TONG CREW, PREP TO LD 2-3/8" TUBING.

1/2/23

HELD PJSM. RU PROTORQUE AND TOH, LAYING DOWN 2 3/8" 5.95# PH6 WS AND BHA. ATLAS TOOL THREAD ON TOP OF ABRASIVE CUTTER HAD BROKEN AND 2.9" OD CUTTER AND 4 3/8" OD BULL NOSE MILL WERE NOT RECOVERED. PU 3 7/8" OD SKIRTED OS, DRESSED W/2 7/8" GRAPPLE, XO, 3 1/2" JARS, 2 - 3 1/2" SLICK OD DRILL COLLARS, XO (TOTAL BHA LENGTH = 77.76') AND TIH ON 4.5" 16.6# DP. HELD PJSM WITH NIGHT CREW. CONTINUED TIH W/4.5" DP. TAGGED TOP OF 5 1/2" TBG @ 10,009' PM. DP STRING AND BHA WEIGHING 225K. WORKED 3 7/8" OS BHA DOWN TO 12,054' WHILE PUMPING 38 STROKES @ 630 PSI. SET DOWN 4 POINTS ON FISH AND PRESSURE INCREASED TO 1,055 PSI. PULLED 10K OVER STRING WEIGHT AND WORKED FISH LOOSE. TOOLS FREE, MAINTAINING 1,055 PSI PUMP PRESSURE. SD PUMPS. TOH W/4.5" DP. DEPTH @ REPORT TIME 7,978' PM. (OART) PERFORMING SHIFT CHANGE W/DAY CREW. WILL CONTINUE TOH.

1/3/23

HELD PJSM. FINISH TOH W/4.5" DP - RECOVERED FISH - 2.9" OD CUTTER AND 4 3/8" OD BULL NOSE MILL. HELD PJSM WITH NIGHT CREW. TIH WITH TTS JET CUTTER(4.07" OD), FIRING HEAD, XO, 1 - 3-1/2" DC, XO, NO-GO, XO & 4-1/2" DP TO TOP OF FISH. TAG AT 12,008' - WORK TOOL 1.5 HRS TRYING TO GET INTO 5-1/2" W/O SUCCESS. TOH WITH DP & TOOLS. DEPTH AT REPORT TIME 10,380'.

1/4/23

HELD PJSM. FINISH TOH W/4.5" DP - LAY DOWN JET CUTTER & TOOLS. WAIT ON TUBING CREW AND TOOLS 4 HRS. SERVICE RIG AND SLIP/CUT DRILLING LINE WHILE WAITING. HELD PJSM WITH NIGHT CREW. RIG UP TUBING CREW. FIRST SET OF TONGS FAILED - REPAIR TONGS 1.5 HRS. TIH WITH 3.5" TAPERED MILL WITH SMOOTH OD, 2.9" OD ABRASIVE JET CUTTER, XO, 2 - 3-3/16 DCS, JARS, 2 - 3-3/16" DC, XO, 163 JTS 2-3/8 5.95# P110 PH-6 TUBING, XO, NO-GO AND 4.5" DP (5277' FROM BOTTOM OF MILL TO NO-GO). BREAK CIRCULATION EVERY 45 JTS. CONTINUE TIH WITH 4.5" DP. DEPTH AT REPORT TIME 5,280'.

1/5/23

HELD PJSM. CONTINUE TO TIH WITH 3-1/2" TAPER MILL/ABRASIVE CUTTER ASSY. TAG AT 12,050' INSIDE 5-1/2". WASH DOWN TO 14,006'. CREW CHANGE - HELD PJSM - SERVICE RIG. CONTINUE TO WASH DOWN TO 17,287' AND TAG TOP OF 5-1/2" WITH NO-GO. AT REPORT TIME PREP TO DROP BALL TO MAKE ABRASIVE JET CUT ON 5-1/2" TBG.

1/6/23

HELD PJSM. DROP BALL TO MAKE ABRASIVE CUT ON 5-1/2" TBG. PRESSURE INCREASED TO 4300# AFTER BALL HIT - ESTABLISH 3.5 BPM @ 4100# - BEGIN PUMPING SAND SLURRY - RAPIDLY LOST PRESSURE DOWN TO 1600#. AFTER APPX 120 BBL PUMPED THE PRESSURE DROPPED TO 600# - INCREASED RATE TO 5 BPM AT 800# AND CIRCULATED SAND OUT. TOH WITH DRILL PIPE. CREW CHANGE - HELD PJSM. CONTINUE TO TOH WITH 4-1/2" DP, 2-3/8" TUBING, 2 DCS, JARS, 2 DCS, XO, ABRASIVE CUTTER & 3.5" TAPERED MILL. FOUND 1 JT OF 4.5 DP WITH A HOLE IN THE TUBE AT APPX 8930'. FINISHED TOH. BALL WAS IN THE CUTTER AND ALL LOOKED NORMAL. LAY DOWN DCS AND JARS. TIH WITH 3.5" TAPERED MILL, NEW 2.9" ABRASIVE CUTTER, 1 - JT 2-3/8" PH6 TUBING, 3 - TUBING SUBS (TO SPACE FOR 53.5' CUT), XO, NO-GO, XO, 162 JTS 2-3/8" 5.95# P110 PH6 TUBING, XO & 4-1/2" DP. DEPTH AT REPORT TIME 3,800'.

1/7/23

HELD PJSM. FINISH TIH WITH 3.5" TAPERED MILL, 2.9" ABRASIVE CUTTER, 1 - JT 2-3/8" PH6 TUBING, 3 - TUBING SUBS (TO SPACE FOR 53.5' CUT), XO, NO-GO, XO, 162 JTS 2-3/8" 5.95# P110 PH6 TUBING, XO & 4-1/2" DP. TAG TOP AT 12,014' - SET CUTTER AT 12,067', NO-GO AT 12,014' - LOOSING CIRCULATION - ESTABLISH CIRCULATION - DROP BALL AT 3.5 BPM AND 300# AND INCREASING - BALL SEATED AND PRESSURE INCREASED TO 350# - HOLE IN DP. TOH 12 STANDS AT A TIME LOOKING FOR HOLE IN DP. FOUND HOLE AT +/-8970' - LAY DOWN BAD JT. - CONTINUE TO TEST DP IN HOLE. TAG TOP AT 12,014' - SET CUTTER AT 12,067', NO-GO AT 12,014' W/2 PTS - ESTABLISH PUMP AT 3.3 BPM 6500 - 7000 PSI - PUMP 150 BBL SAND LADEN FLUID - TOP DRIVE BEGAN LEAKING AFTER SAND HAD REACHED THE JETS - CONTINUE CUTTING - LOST PRESSURE DOWN TO 5000# WHEN ALL SAND WAS OUT OF CUTTER - CONTINUE TO FLUSH SAND OUT OF WELL - TOP DRIVE QUIT LEAKING AT APPX 3500#. CIRCULATE OUT SAND. TOH WITH CUTTER AND MILL. DEPTH AT REPORT TIME 10,800'.

1/8/23

HELD PJSM. FINISH TOH WITH CUTTER AND MILL. CREW CHANGE PJSM. LD NO-GO, SUBS, CUTTER & MILL. RD TUBING TOOLS & CASING CREW. RIG REPAIR - FIX TOP DRIVE LEAK - 4 HRS. TIH WITH 8-3/8" OS DRESSED W/ 5-1/2" GRAPPLE AND MILL CONTROL, JARS, XO, 6 - DCS, XO, ENERGIZER, XO & 4-1/2" DP - DEPTH AT REPORT TIME 6,500'.

1/9/23

HELD PJSM. FINISH TIH WITH 8-3/8" OS DRESSED W/ 5-1/2" GRAPPLE AND MILL CONTROL, JARS, XO, 6 - DCS, XO, ENERGIZER, XO & 4-1/2" DP. TAG TOP OF FISH AT 12014'. ENGAGE FISH AND JAR ON FISH, PULLING UP TO 350K (100K OVER SW). INDICATIONS WERE THAT FISH CAME LOOSE AND WAS DRAGGING UPHOLE APRX 20K OVER SW FOR 50'. LOST DRAG; FINAL STRING WEIGHT CLOSE TO ORIGINAL SW. TOH. AT 9800' SHUT DOWN F/ 3 HRS FOR RIG REPAIR (TOP DRIVE ELECTRICAL ISSUE AND BROKEN BOLT ON ST-80). FINISHED TOH W/O ST-80. DID NOT HAVE FISH. GRAPPLE WAS DAMAGED AND ALL TEETH SHOWED CONTACT. OVERSHOT WAS 'EGGED'. WAIT ON NEW OVERSHOT WITH EXTENSION F/ 4 HRS. OVERSHOT MADE IT TO LOCATION - PICKING UP TOOLS AT REPORT TIME.

1/10/23

HELD PJSM. FINISH TIH WITH 8-3/8" OS DRESSED W/ 5-1/2" GRAPPLE AND MILL CONTROL, JARS, XO, 6 - DCS, XO, ENERGIZER, XO & 4-1/2" DP. CIRCULATE OVER TOP OF FISH AT 12014'. ENGAGE FISH AND JAR ON FISH, PULLING UP TO 380K (140K OVER SW). JAR FOR OVER AN HOUR UNTIL TOOLS WOULD DRAG WITHOUT ENGAGING. TOH WITH TOOLS. RECOVERED 33' PIECE OF 5-1/2" TBG, W/BOTTOM 10' COLLAPSED. BOTTOM OF FISH IS A JAGGED PIN END THAT PULLED OUT OF A 5-1/2" BOX. RIG REPAIR - SLIP/CUT DRILLING LINE AND MAKE REPAIRS TO TS-80. REPAIRS NEARING COMPLETION AT REPORT TIME..

1/11/23

HELD PJSM. FINISHED RIG REPAIRS. WAIT ON MILL. CREW CHANGE PJSM. PICK UP 8-5/8" TAPERED MILL WITH 3-1/2" PILOT BOTTOM, XO, 6 DCS, XO & 4-1/2" DP - TAG AT 12,010' - MILL FROM 12010' TO 12030' IN 1 HR, W/40 RPM, WOB 2-3K, 77 SPM, 730 PSI. LOST 300 PSI PUMP PRESSURE. COULD NOT FIND A SURFACE PROBLEM. PULL 10 STANDS. CIRCULATED. WEIGHED MUD IN AND OUT. SUSPECTED UNBALANCED MUD SYSTEM FROM TRANSFERRING MUD. CIRCULATED UNTIL PRESSURE STARTED CLIMBING. TIH TO 12,030' AND RESUMED MILLING.

1/12/23

HELD PJSM. CONTINUE MILLING 12,030' TO 12,040' IN 4 HRS. - TOH WITH WORN OUT MILL. CREW CHANGE - HOLD PJSM. FINISHED TOH. SLIP/CUT DRILLING LINE AND SERVICE RIG. TIH WITH MILL #2 - 8-5/8" TAPERED MILL WITH 3-1/2" PILOT BOTTOM, XO, JARS, XO, 6 DCS, XO & 4-1/2" DP. TIH AT 200' AT REPORT TIME.

1/13/23

HELD PJSM. FINISH TIH WITH MILL #2 - 8-5/8" TAPERED MILL (W/ 6" FLAT BOTTOM AND 3-1/2" PILOT), XO, JARS, XO, 6 DCS, XO & 4-1/2" DP. TAG AT 12,038'. MILL W/4-14K WOB, 45 RPM, 3-4K TORQUE, 270 GPM, 550 PSI. AT 12,045' THE PILOT ENETERED 5-1/2 TBG AND PRSSURE CLIMBED TO 880 PSI. REDUCED PUMP RATE TO 70 GPM, 50 PSI AND CONTINUED MILLING TO 12,047'. MILL TOTAL 12038' - 12047' IN 9 HRS. PULL TO 12.035' AND INCREASE PUMP RATE TO 270 GPM, CIRCULATE. TOH FOR MILL #3 - TOOLS AT 700' AT REPORT TIME.

1/14/23

HELD PJSM. FINISH TOH WITH MILL #2. TIH WITH MILL #3 - 8-5/8" TAPERED MILL (W/ 6" TAPERED BOTTOM AND 3-1/2" PILOT), XO, JARS, XO, 6 DCS, XO & 4-1/2" DP. TAG AT 12,044'. MILL W/6-12K WOB, 40 RPM, 3-4K TORQUE, 270 GPM, 500-550 PSI. MILL 12,044' - 12,049' IN 12 HRS. PUMPED 3 SWEEPS WHILE MILLING - LAST SWEEP ON SURFACE PRIOR TO TOH. TOH WITH MILL #3. TOOL DEPTH 3200' AT REPORT TIME.

1/15/23

HELD PJSM. FINISH TOH WITH MILL #3. TIH WITH MILL #4 - 8-5/8" TAPERED MILL (W/ 6" FLAT BOTTOM AND 3-1/2" PILOT), XO, JARS, XO, 6 DCS, XO & 4-1/2" DP. TAG AT 12,047'. MILL W/6-18K WOB, 40 RPM, 2.5-5K TORQUE, 270 GPM, 550 PSI. MILL 12,047' - 12,050' IN 1 HR. AT 12,050' - LOST TORQUE AND PUT 18K WOB. RIG BLOWER MOTOR ON THE DRAW WORKS MOTOR WENT OUT. COULD NOT TRIP. RIG REPAIR 5 HRS. TOH WITH MILL #4. BOTTOM 3-1/2" PILOT WAS MISSING (3.5" OD X 18"). OUT OF HOLE BREAKING DOWN TOOLS AT REPORT TIME.

1/16/23

HELD PJSM. BREAK DOWN TOOLS. TIH WITH BENT, MULE SHOED 2-3/8" PH6 TUBING JOINT, 2 JTS 2-3/8" PH6 TUBING, XO, 3 - 3-1/2" DCS, XO, & 4-1/2" DP. CREW CHANGE - HOLD PJSM. CONTINUE TO TIH. TAG AT 12,048' - WORK PIPE TO GET INTO 5.5" FOR 2 HRS W/O SUCCESS. TOH. LAYING DOWN TOOLS AT REPORT TIME.

Spud Date:

N/A

Rig Release Date:

N/A

---

I hereby certify that the information above is true and complete to the best of my knowledge and belief.

SIGNATURE  TITLE SVP Operations DATE 1/16/2023

Type or print name Nick Hines E-mail address: nhines@pilotwater.com PHONE: 713-307-8702

**For State Use Only**

APPROVED BY: \_\_\_\_\_ TITLE \_\_\_\_\_ DATE \_\_\_\_\_

Conditions of Approval (if any):



Submit 1 Copy To Appropriate District Office  
 District I – (575) 393-6161  
 1625 N. French Dr., Hobbs, NM 88240  
 District II – (575) 748-1283  
 811 S. First St., Artesia, NM 88210  
 District III – (505) 334-6178  
 1000 Rio Brazos Rd., Aztec, NM 87410  
 District IV – (505) 476-3460  
 1220 S. St. Francis Dr., Santa Fe, NM 87505

State of New Mexico  
 Energy, Minerals and Natural Resources

Form C-103  
 Revised July 18, 2013

OIL CONSERVATION DIVISION  
 1220 South St. Francis Dr.  
 Santa Fe, NM 87505

WELL API NO. 30-025-46685
5. Indicate Type of Lease STATE <input type="checkbox"/> FEE <input checked="" type="checkbox"/>
6. State Oil & Gas Lease No.
7. Lease Name or Unit Agreement Name Cyclone Fed SWD
8. Well Number 1
9. OGRID Number 308339
10. Pool name or Wildcat

<b>SUNDRY NOTICES AND REPORTS ON WELLS</b> (DO NOT USE THIS FORM FOR PROPOSALS TO DRILL OR TO DEEPEN OR PLUG BACK TO A DIFFERENT RESERVOIR. USE "APPLICATION FOR PERMIT" (FORM C-101) FOR SUCH PROPOSALS.)	
1. Type of Well: Oil Well <input type="checkbox"/> Gas Well <input checked="" type="checkbox"/> Other	
2. Name of Operator OWL SWD Operating LLC	
3. Address of Operator 20 Greenway Plaza Suite 200 Houston TX 77046	
4. Well Location Unit Letter <u>H</u> : _____ feet from the _____ North _____ line and _____ 291 _____ feet from the _____ East _____ line Section 11 Township 25S Range 32E NMPM County Lea	
11. Elevation (Show whether DR, RKB, RT, GR, etc.) 3544' RKB	

12. Check Appropriate Box to Indicate Nature of Notice, Report or Other Data

NOTICE OF INTENTION TO:		SUBSEQUENT REPORT OF:	
PERFORM REMEDIAL WORK <input type="checkbox"/>	PLUG AND ABANDON <input type="checkbox"/>	REMEDIAL WORK <input type="checkbox"/>	ALTERING CASING <input type="checkbox"/>
TEMPORARILY ABANDON <input type="checkbox"/>	CHANGE PLANS <input type="checkbox"/>	COMMENCE DRILLING OPNS. <input type="checkbox"/>	P AND A <input type="checkbox"/>
PULL OR ALTER CASING <input checked="" type="checkbox"/>	MULTIPLE COMPL <input type="checkbox"/>	CASING/CEMENT JOB <input type="checkbox"/>	
DOWNHOLE COMMINGLE <input type="checkbox"/>			
CLOSED-LOOP SYSTEM <input type="checkbox"/>			
OTHER: <input type="checkbox"/>		OTHER: <input type="checkbox"/>	

13. Describe proposed or completed operations. (Clearly state all pertinent details, and give pertinent dates, including estimated date of starting any proposed work). SEE RULE 19.15.7.14 NMAC. For Multiple Completions: Attach wellbore diagram of proposed completion or recompletion.

OWL SWD/PWS requests to plug back the Cyclone Fed SWD in preparation for a potential sidetrack. Proposed procedure below.

**Drift Run**

- 1) HPJSM.
- 2) Pick up and make up drift run BHA.
- 3) 8 1/2" Mill + CSG Scraper + 8 1/2" Watermelon Mill + Pony Collar + 8 1/2" Watermelon Mill
- 4) Trip in hole to 5' above top of fish @ 12047' on 5" DP.
  - a) If there is any slack off while tripping in hole. Make up top drive. Wash and ream the casing scrappers across interval until BHA passes freely. Record all depths.
  - b) Ensure there is no slack off through this interval.
- 5) Circulate the hole clean.
  - a) Continue to circulate until there is no debris across the shakers.
- 6) Flow check. Pump dry job and trip out of hole.

**9-5/8" CSG PT Run**

- 7) HPJSM.
- 8) PU and RIH with 9-5/8" to 12000'.
- 9) Set packer and fill the annulus.
- 10) Shut pipe ram and pressure test 9-5/8" to 1500 psi for 30 mins.
- 11) Release packer and POOH to surface.

**Cement Plug**

- 12) Function test annular, blinds, and rams.
- 13) HPJSM & count all pipe in derrick.
- 14) PU and MU 5-1/2" Overshot with grapple and bumper sub.
- 15) RIH and engage the fish at 12047'.
- 16) Establish circulation through 5-1/2" fish through the perforations at 17325'-17319'. If able work the rate up to 5 bpm.
- 17) Circulate 3 bottom up and until MW in = MW out and shakers are clean while rig up cmt crew.
- 18) HPJSM.
- 19) Spot 192 bbls - 750 sks of 13.2# NeoCem (1.438 yld) balance cement plug from 17325' to 12097' (50' below the TOF).
  - a) Wolfcamp through the Woodford will be isolated by the balance cement plug.
- 20) Break out low torque valve and 2" high pressure lines.
- 21) Release the grapple from the fish and POOH 2 stands.
- 22) Drop foam ball and flush the DP with 2 bottoms up.
  - a) Cement is not planned to surface but be prepared for cement on the first bottoms up.
- 23) Flow Check.
- 24) POOH to surface and LD fishing BHA.
  - a) If unable to release the grapple a string shot maybe needed.

**CIBP Run**

- 25) HPJSM & rig up wireline unit.
- 26) RIH and set 9 5/8" CIBP @ 11700'.
- 27) POOH to 11500'. RIH and tag CIBP to confirm set on depth.
- 28) POOH and rig down wireline unit.

**Pressure Test and Displacement Run**

- 29) Function test annular, blinds, and rams.
- 30) Trip in hole with 5" OEDP to 11695' (5' above CIBP).
- 31) Slowly pressure up to 1500 psi in 500 psi steps. Hold pressure for 15 minutes. Bleed off slowly.
- 32) Displace hole to 11.8 ppg OBM.
  - a) Confirm 11.8 ppg mud in and out.
- 33) Flow check.
- 34) POOH to surface.
- 35) Wait to perform any sidetrack operations until another new sundry request is sent to NMOCD and approved.

Spud Date:

N/A

Rig Release Date:

N/A

---

I hereby certify that the information above is true and complete to the best of my knowledge and belief.SIGNATURE Lucas Sheward TITLE Drilling & Completions Manager DATE 1/23/2023Type or print name Lucas Sheward E-mail address: lsheward@pilotwater.com PHONE: 713-307-8702**For State Use Only**APPROVED BY: Dylan Rose-Coss TITLE Petroleum Specialist DATE 1/24/23

Conditions of Approval (if any):



## Rose-Coss, Dylan, EMNRD

---

**From:** Lucas Sheward <lsheward@pilotwater.com>  
**Sent:** Tuesday, January 24, 2023 2:21 PM  
**To:** Rose-Coss, Dylan, EMNRD  
**Subject:** FW: [EXTERNAL] RE: Additional Document Required - Ref Sundry 2711672

Free for a call in a few?



---

**From:** Ajibola E-I-T, Olabode T <oajibolaeit@blm.gov>  
**Sent:** Tuesday, January 24, 2023 3:08 PM  
**To:** Lucas Sheward <lsheward@pilotwater.com>  
**Subject:** Re: [EXTERNAL] RE: Additional Document Required - Ref Sundry 2711672

**CAUTION:** External Sender Email: Use caution with links / attachments.

A2 is still acting up. I gave you my verbal acceptance already. You do not have to worry. Once A2 functionality improves, you will receive the approval promptly.

***Dr. Olabode Thomas Ajibola E.I.T, Ph.D.***

***Petroleum Engineer***

***Office: (575) 234-2231***

***Cell: (575) 361 -2893***

***E-mail: [oajibolaeit@blm.gov](mailto:oajibolaeit@blm.gov)***

***Bureau of Land Management (BLM)***

***Department of The Interior***

***620 East Greene Street***

***Carlsbad, NM 88220***

---

**From:** Lucas Sheward <[lsheward@pilotwater.com](mailto:lsheward@pilotwater.com)>  
**Sent:** Tuesday, January 24, 2023 1:21 PM

To: Ajibola E-I-T, Olabode T <[ojibolaeit@blm.gov](mailto:ojibolaeit@blm.gov)>

Subject: RE: [EXTERNAL] RE: Additional Document Required - Ref Sundry 2711672

Any more luck with the A2 being back up?



---

From: Ajibola E-I-T, Olabode T <[ojibolaeit@blm.gov](mailto:ojibolaeit@blm.gov)>

Sent: Tuesday, January 24, 2023 12:21 PM

To: Lucas Sheward <[lsheaward@pilotwater.com](mailto:lsheaward@pilotwater.com)>

Subject: Re: [EXTERNAL] RE: Additional Document Required - Ref Sundry 2711672

**CAUTION:** External Sender Email: Use caution with links / attachments.

We are having technical issues with A2 at the moment. It will be approved once the issues are fixed.

***Dr. Olabode Thomas Ajibola E.I.T, Ph.D.***

*Petroleum Engineer*

*Office: (575) 234-2231*

*Cell: (575) 361 -2893*

*E-mail: [ojibolaeit@blm.gov](mailto:ojibolaeit@blm.gov)*

*Bureau of Land Management (BLM)*

*Department of The Interior*

*620 East Greene Street*

*Carlsbad, NM 88220*

---

From: Lucas Sheward <[lsheaward@pilotwater.com](mailto:lsheaward@pilotwater.com)>

Sent: Tuesday, January 24, 2023 10:57 AM

To: Ajibola E-I-T, Olabode T <[ojibolaeit@blm.gov](mailto:ojibolaeit@blm.gov)>

Subject: [EXTERNAL] RE: Additional Document Required - Ref Sundry 2711672

This email has been received from outside of DOI - Use caution before clicking on links, opening attachments, or responding.

Thank you for sending this over. We will work on this and resubmit the sidetrack part. Did the Cyclone plugback sundry get approved yet?



---

**From:** Ajibola E-I-T, Olabode T <[oajibolaeit@blm.gov](mailto:oajibolaeit@blm.gov)>  
**Sent:** Tuesday, January 24, 2023 11:18 AM  
**To:** Lucas Sheward <[lsheaward@pilotwater.com](mailto:lsheaward@pilotwater.com)>  
**Subject:** Additional Document Required - Ref Sundry 2711672

**CAUTION:** External Sender Email: Use caution with links / attachments.

Lucas,

As per our telephone conversation, please find the following listed documents needed to complete your sundry application for approval.

Please include the following documents in your sundry application:

1. Casing program
2. Cement program including the Lead and the Tail cement allocation
3. Mud program
4. BOP size, if 10M remember to include the variance, if needed, and your drilling well control plan
5. Directional Plan
6. Form C102 or well plat

Regards,

***Dr. Olabode Thomas Ajibola E.I.T, Ph.D.***

***Petroleum Engineer***

***Office: (575) 234-2231***

***Cell: (575) 361 -2893***

***E-mail: [oajibolaeit@blm.gov](mailto:oajibolaeit@blm.gov)***

***Bureau of Land Management (BLM)***

**Department of The Interior**  
**620 East Greene Street**

**Carlsbad, NM 88220**

**WELLBORE SCHEMATIC**

OWL SWD Operating, LLC.  
 Cyclone Federal SWD #1  
 1494' FNL, 291' FEL  
 Sec. 11, T25S, R32E, Lea Co. NM  
 Lat 32.1481933° N, Lon 103.6379822°  
 W GL 3516', RKB 3544'

**Surface - (Conventional)**

Hole Size: 26"  
 Casing: 20" - 94# H-40 BTC Casing  
 Depth Top: Surface  
 Depth Btm: 977'  
 Cement: 1802 sks - Class C + Additives (100% Excess)  
 Cement Top: Surface - (Circulated 635 sks)

**Intermediate #1 - (Conventional)**

Hole Size: 17.5"  
 Casing: 13.375" - 54.5# J-55 & 61# J-55 BTC Casing  
 Depth Top: Surface  
 Depth Btm: 4883'  
 Cement: 3114 sks - Class C + Additives (50% Excess)  
 Cement Top: Surface - (Circulated 431 sks)

**Intermediate #2 - (Conventional)**

Hole Size: 12.25"  
 Casing: 9.625" - 40# HCL-80 BTC Casing  
 Depth Top: Surface  
 Depth Btm: 12280'  
 Cement: 2437 sks - Class C & Class H + Additives (50% Excess)  
 Cement Top: Surface - (Circulated 156 sks)

**ECP/DV Tool: 4978'**

**Intermediate #3 - (Liner)**

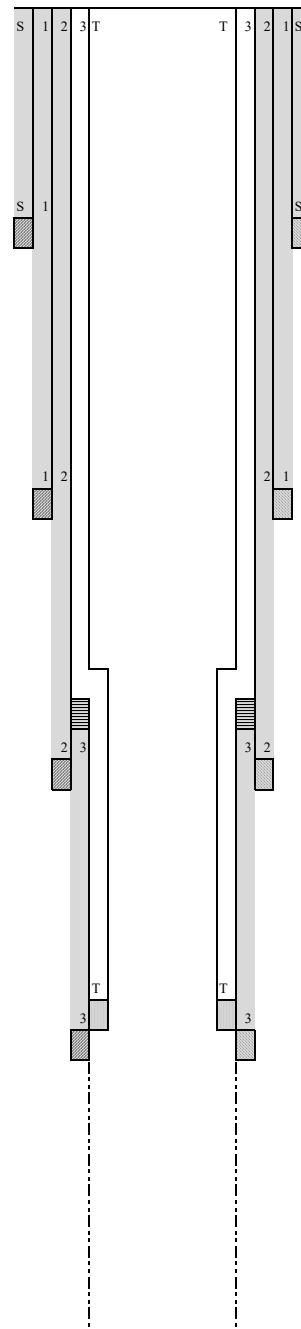
Hole Size: 8.75"  
 Casing: 7.625" - 39# HCL-80 FJ Casing  
 Depth Top: 12118'  
 Depth Btm: 17380'  
 Cement: 513 sks - Class H + Additives (50% Excess)  
 Cement Top: 12118' - (Circulated 119 sks)

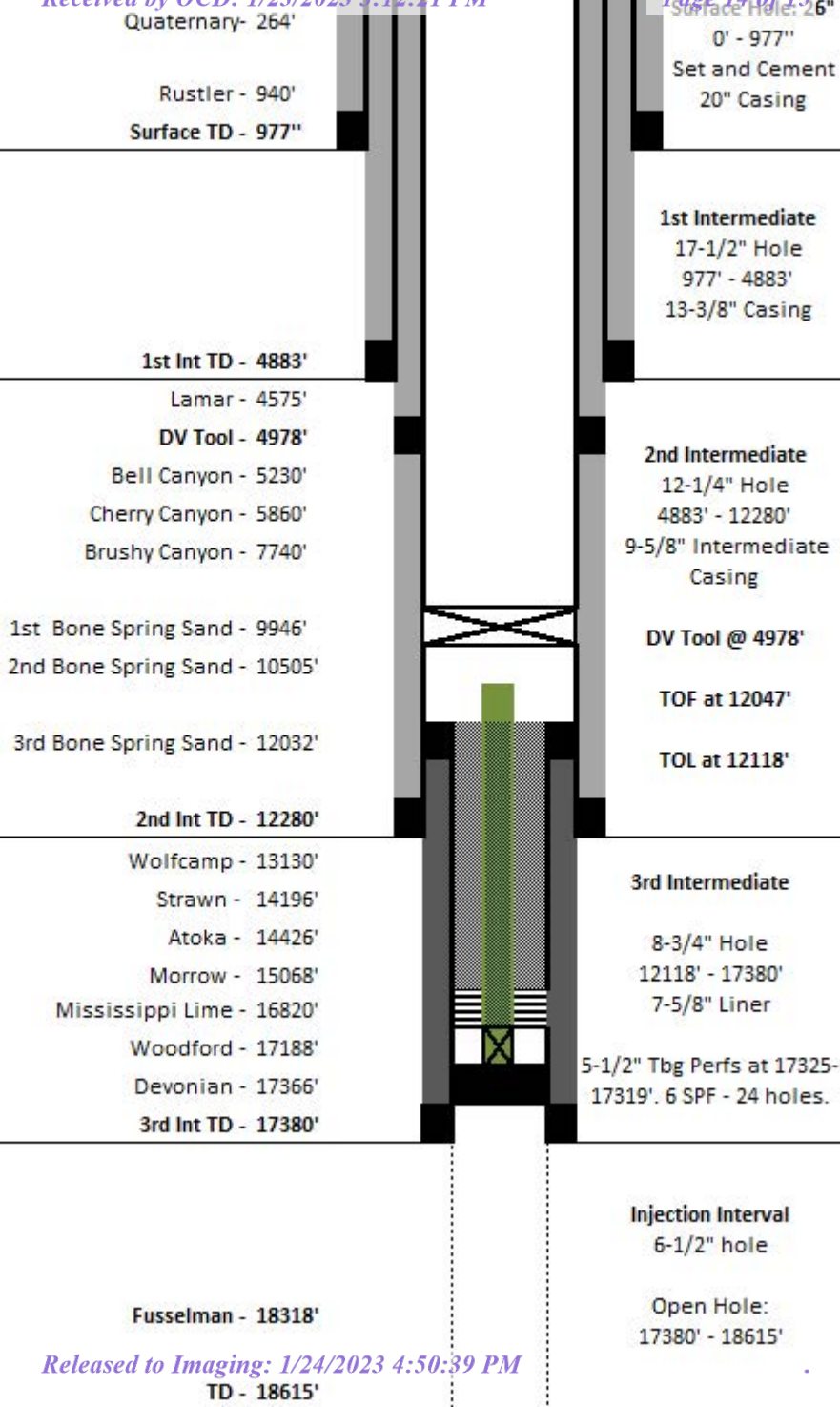
**Intermediate #4 - (Open Hole)**

Hole Size: 6.5"  
 Depth: 18615'  
 Inj. Interval: 17380' - 18615' (Open-Hole Completion)

**Tubing - (Tapered)**

Tubing Depth: 17325'  
 Tubing: 7" - 26# HCP-110 FJ Casing & 5.5" 17# HCL-80 FJ Casing (Fiberglass Lined)  
 X/O Depth: 12018'  
 X/O: 7" 26# HCP-110 FJ Casing - X - 5.5" 17# HCL-80 FJ Casing (Fiberglass Lined)  
 Packer Depth: 17325'  
 Packer: 5.5" - Perma-Pak (Inconel)







**District I**  
1625 N. French Dr., Hobbs, NM 88240  
Phone:(575) 393-6161 Fax:(575) 393-0720  
**District II**  
811 S. First St., Artesia, NM 88210  
Phone:(575) 748-1283 Fax:(575) 748-9720  
**District III**  
1000 Rio Brazos Rd., Aztec, NM 87410  
Phone:(505) 334-6178 Fax:(505) 334-6170  
**District IV**  
1220 S. St Francis Dr., Santa Fe, NM 87505  
Phone:(505) 476-3470 Fax:(505) 476-3462

State of New Mexico  
Energy, Minerals and Natural Resources  
Oil Conservation Division  
1220 S. St Francis Dr.  
Santa Fe, NM 87505

CONDITIONS  
  
Action 178729

CONDITIONS

Operator: OWL SWD OPERATING, LLC 20 Greenway Plaza Houston, TX 77046	OGRID: 308339
	Action Number: 178729
	Action Type: [C-103] NOI Workover (C-103G)

CONDITIONS

Created By	Condition	Condition Date
drose	Pending formal BLM approval	1/24/2023