

|   |  |  |
|---|--|--|
| Well Name: FLOOFY CAT 21-16 FED STATE COM | Well Location: T23S / R32E / SEC 21 / SWSE / 32.28381 / -103.6794692 | County or Parish/State: LEA / NM             |
| Well Number: 526H                         | Type of Well: OIL WELL   | Allottee or Tribe Name:                      |
| Lease Number: NMNM86153                   | Unit or CA Name:   | Unit or CA Number:                           |
| US Well Number: 3002550048                | Well Status: Drilling Well   | Operator: DEVON ENERGY PRODUCTION COMPANY LP |

Notice of Intent

Sundry ID: 2709267

|  |                              |
|--|------------------------------|
| Type of Submission: Notice of Intent           | Type of Action: APD Change   |
| Date Sundry Submitted: 01/17/2023              | Time Sundry Submitted: 07:39 |
| Date proposed operation will begin: 01/03/2023 |                              |

Procedure Description: SPACING CHANGE -Engineer Review only Devon Energy Production Co., L.P. (Devon) respectfully requests to change the spacing to reflect the communization agreement. Please see attached plat.

NOI Attachments

Procedure Description

WA018369806\_FLOOFY\_CAT\_21\_16\_FED\_STATE\_COM\_526H\_WL\_1\_3\_2023\_20230103134217.pdf

Received by OCD: 1/23/2023 8:23:07 AM

Page 2 of 16

|   |  |  |
|---|--|--|
| Well Name: FLOOPY CAT 21-16 FED STATE COM | Well Location: T23S / R32E / SEC 21 / SWSE / 32.28381 / -103.6794692 | County or Parish/State: LEA / NM             |
| Well Number: 526H                         | Type of Well: OIL WELL   | Allottee or Tribe Name:                      |
| Lease Number: NMNM86153                   | Unit or CA Name:   | Unit or CA Number:                           |
| US Well Number: 3002550048                | Well Status: Drilling Well   | Operator: DEVON ENERGY PRODUCTION COMPANY LP |

Operator

I certify that the foregoing is true and correct. Title 18 U.S.C. Section 1001 and Title 43 U.S.C. Section 1212, make it a crime for any person knowingly and willfully to make to any department or agency of the United States any false, fictitious or fraudulent statements or representations as to any matter within its jurisdiction. Electronic submission of Sundry Notices through this system satisfies regulations requiring a

|  |                                  |
|--|----------------------------------|
| Operator Electronic Signature: JENNY HARMS | Signed on: JAN 17, 2023 07:39 AM |
| Name: DEVON ENERGY PRODUCTION COMPANY LP   |                                  |
| Title: Regulatory Compliance Professional  |                                  |
| Street Address: 333 West Sheridan Avenue   |                                  |
| City: Oklahoma City                        | State: OK                        |
| Phone: (405) 552-6560                      |                                  |
| Email address: jennifer.harms@dvn.com      |                                  |

Field

|                      |        |      |
|----------------------|--------|------|
| Representative Name: |        |      |
| Street Address:      |        |      |
| City:                | State: | Zip: |
| Phone:               |        |      |
| Email address:       |        |      |

BLM Point of Contact

|                           |                                    |
|---------------------------|------------------------------------|
| BLM POC Name: LONG VO     | BLM POC Title: Petroleum Engineer  |
| BLM POC Phone: 5752345972 | BLM POC Email Address: LVO@BLM.GOV |
| Disposition: Accepted     | Disposition Date: 01/23/2023       |
| Signature: Long Vo        |                                    |

District I  
1625 N. French Dr., Hobbs, NM 88240  
Phone: (575) 393-6161 Fax: (575) 393-0720  
District II  
811 S. First St., Artesia, NM 88210  
Phone: (575) 748-1283 Fax: (575) 748-9720  
District III  
1000 Rio Brazos Road, Aztec, NM 87410  
Phone: (505) 334-6178 Fax: (505) 334-6170  
District IV  
1220 S. St. Francis Dr., Santa Fe, NM 87505  
Phone: (505) 476-3460 Fax: (505) 476-3462

State of New Mexico  
Energy, Minerals & Natural Resources Department  
OIL CONSERVATION DIVISION  
1220 South St. Francis Dr.  
Santa Fe, NM 87505

Form C-102  
Revised August 1, 2011  
Submit one copy to appropriate  
District Office  
☐ AMENDED REPORT

## WELL LOCATION AND ACREAGE DEDICATION PLAT

|                                |   |  |
|--------------------------------|---|--|
| <sup>1</sup> API Number        | <sup>2</sup> Pool Code<br>[97933]                                   | <sup>3</sup> Pool Name<br>WC-025 G-07 S233204D;BONE SPRING |
| <sup>4</sup> Property Code     | <sup>5</sup> Property Name<br>FLOOFY CAT 21-16 FED STATE COM        | <sup>6</sup> Well Number<br>526H                           |
| <sup>7</sup> OGRID No.<br>6137 | <sup>8</sup> Operator Name<br>DEVON ENERGY PRODUCTION COMPANY, L.P. | <sup>9</sup> Elevation<br>3681.4                           |

<sup>10</sup> Surface Location

| UL or lot no. | Section | Township | Range | Lot Idn | Feet from the | North/South line | Feet from the | East/West line | County |
|---------------|---------|----------|-------|---------|---------------|------------------|---------------|----------------|--------|
| O             | 21      | 23 S     | 32 E  |         | 350           | SOUTH            | 2603          | EAST           | LEA    |

<sup>11</sup> Bottom Hole Location If Different From Surface

| UL or lot no.                        | Section                       | Township                         | Range                   | Lot Idn | Feet from the | North/South line | Feet from the | East/West line | County |
|--------------------------------------|-------------------------------|----------------------------------|-------------------------|---------|---------------|------------------|---------------|----------------|--------|
| B                                    | 16                            | 23 S                             | 32 E                    |         | 20            | NORTH            | 1650          | EAST           | LEA    |
| <sup>12</sup> Dedicated Acres<br>160 | <sup>13</sup> Joint or Infill | <sup>14</sup> Consolidation Code | <sup>15</sup> Order No. |         |               |                  |               |                |        |

No allowable will be assigned to this completion until all interests have been consolidated or a non-standard unit has been approved by the division.

|  |   |
|--|---|
| <p>NW CORNER SEC. 16<br/>LAT. = 32.3118416°N<br/>LONG. = 103.6881673°W<br/>NMSP EAST (FT)<br/>N = 477780.18<br/>E = 740653.25</p> <p>W/4 CORNER SEC. 16<br/>LAT. = 32.3045785°N<br/>LONG. = 103.6881632°W<br/>NMSP EAST (FT)<br/>N = 475137.91<br/>E = 740670.42</p> <p>SECTION CORNER<br/>LAT. = 32.2973218°N<br/>LONG. = 103.6881624°W<br/>NMSP EAST (FT)<br/>N = 472497.97<br/>E = 740686.53</p> <p>W/4 CORNER SEC. 21<br/>LAT. = 32.2900582°N<br/>LONG. = 103.6881558°W<br/>NMSP EAST (FT)<br/>N = 469855.52<br/>E = 740704.48</p> <p>SW CORNER SEC. 21<br/>LAT. = 32.2828089°N<br/>LONG. = 103.6881552°W<br/>NMSP EAST (FT)<br/>N = 467217.53<br/>E = 740720.53</p> <p>N/4 CORNER SEC. 16<br/>LAT. = 32.3118706°N<br/>LONG. = 103.6796121°W<br/>NMSP EAST (FT)<br/>N = 477806.75<br/>E = 743296.24</p> <p>QUARTER CORNER<br/>LAT. = 32.2973519°N<br/>LONG. = 103.6796130°W<br/>NMSP EAST (FT)<br/>N = 472524.93<br/>E = 743328.17</p> <p>SECTION CORNER<br/>LAT. = 32.2973762°N<br/>LONG. = 103.6710664°W<br/>NMSP EAST (FT)<br/>N = 472549.96<br/>E = 745968.95</p> <p>E/4 CORNER SEC. 16<br/>LAT. = 32.3046362°N<br/>LONG. = 103.6710674°W<br/>NMSP EAST (FT)<br/>N = 475191.11<br/>E = 745935.72</p> <p>E/4 CORNER SEC. 21<br/>LAT. = 32.2901167°N<br/>LONG. = 103.6710640°W<br/>NMSP EAST (FT)<br/>N = 469908.98<br/>E = 745986.01</p> <p>SE CORNER SEC. 21<br/>LAT. = 32.2828569°N<br/>LONG. = 103.6710470°W<br/>NMSP EAST (FT)<br/>N = 467267.93<br/>E = 746007.58</p> <p>Bottom of Hole Location:<br/>LAT. = 32.3118262°N<br/>LONG. = 103.6764078°W<br/>NMSP EAST (FT)<br/>N = 477796.67<br/>E = 744286.28</p> <p>First Take Point:<br/>LAT. = 32.3116064°N<br/>LONG. = 103.6764078°W</p> <p>Surface Location:<br/>LAT. = 32.2838100°N (NAD83)<br/>LONG. = 103.6794692°W<br/>ELEV. = 3681.4'<br/>NMSP EAST (FT)<br/>N = 467598.70<br/>E = 743402.65</p> <p>S/4 CORNER SEC. 21<br/>LAT. = 32.2828480°N<br/>LONG. = 103.6796166°W<br/>NMSP EAST (FT)<br/>N = 467248.45<br/>E = 743359.23</p> | <p><b><sup>17</sup> OPERATOR CERTIFICATION</b></p> <p>I hereby certify that the information contained herein is true and complete to the best of my knowledge and belief, and that this organization either owns a working interest or unleased mineral interest in the land including the proposed bottom hole location or has a right to drill this well at this location pursuant to a contract with an owner of such a mineral or working interest, or to a voluntary pooling agreement or a compulsory pooling order heretofore entered by the division.</p> <p>Signature: <u>Jenny Harms</u> Date: <u>1/3/2023</u></p> <p>Printed Name: <u>JENNY HARMS</u></p> <p>E-mail Address: <u>JENNY.HARMS@DVN.COM</u></p> <p><b><sup>18</sup> SURVEYOR CERTIFICATION</b></p> <p>I hereby certify that the well location shown on this plat was plotted from field notes of actual surveys made by me or under my supervision, and that the same is true and correct to the best of my belief.</p> <p>JULY 29, 2021</p> <p>Date of Survey: <u>1/27/23</u></p> <p>Signature and Seal of Professional Surveyor: <u>[Signature]</u></p> <p>Certificate Number: <u>12797</u></p> <p>Surveyor: <u>ALIMON F. JARAMILLO</u> License No. 8976</p> |
|--|---|

District I  
1625 N. French Dr., Hobbs, NM 88240  
Phone: (575) 393-6161 Fax: (575) 393-0720  
District II  
811 S. First St., Artesia, NM 88210  
Phone: (575) 748-1283 Fax: (575) 748-9720  
District III  
1000 Rio Brazos Road, Aztec, NM 87410  
Phone: (505) 334-6178 Fax: (505) 334-6170  
District IV  
1220 S. St. Francis Dr., Santa Fe, NM 87505  
Phone: (505) 476-3460 Fax: (505) 476-3462

State of New Mexico  
Energy, Minerals & Natural Resources Department  
OIL CONSERVATION DIVISION  
1220 South St. Francis Dr.  
Santa Fe, NM 87505

Form C-102  
Revised August 1, 2011  
Submit one copy to appropriate  
District Office  
☐ AMENDED REPORT

## WELL LOCATION AND ACREAGE DEDICATION PLAT

|                                |   |   |
|--------------------------------|---|---|
| <sup>1</sup> API Number        | <sup>2</sup> Pool Code<br>[53805]                                   | <sup>3</sup> Pool Name<br>SAND DUNES;BONE SPRING, SOUTH |
| <sup>4</sup> Property Code     | <sup>5</sup> Property Name<br>FLOOFY CAT 21-16 FED STATE COM        | <sup>6</sup> Well Number<br>526H                        |
| <sup>7</sup> OGRID No.<br>6137 | <sup>8</sup> Operator Name<br>DEVON ENERGY PRODUCTION COMPANY, L.P. | <sup>9</sup> Elevation<br>3681.4                        |

<sup>10</sup> Surface Location

| UL or lot no. | Section | Township | Range | Lot Idn | Feet from the | North/South line | Feet from the | East/West line | County |
|---------------|---------|----------|-------|---------|---------------|------------------|---------------|----------------|--------|
| O             | 21      | 23 S     | 32 E  |         | 350           | SOUTH            | 2603          | EAST           | LEA    |

<sup>11</sup> Bottom Hole Location If Different From Surface

| UL or lot no.                        | Section                       | Township                         | Range                   | Lot Idn | Feet from the | North/South line | Feet from the | East/West line | County |
|--------------------------------------|-------------------------------|----------------------------------|-------------------------|---------|---------------|------------------|---------------|----------------|--------|
| B                                    | 16                            | 23 S                             | 32 E                    |         | 20            | NORTH            | 1650          | EAST           | LEA    |
| <sup>12</sup> Dedicated Acres<br>480 | <sup>13</sup> Joint or Infill | <sup>14</sup> Consolidation Code | <sup>15</sup> Order No. |         |               |                  |               |                |        |

No allowable will be assigned to this completion until all interests have been consolidated or a non-standard unit has been approved by the division.

|  |  |  |  |  |  |  |
|--|--|--|--|--|--|--|
| <p>NW CORNER SEC. 16<br/>LAT. = 32.3118416°N<br/>LONG. = 103.6881673°W<br/>NMSP EAST (FT)<br/>N = 477780.18<br/>E = 740653.25</p> <p>W/4 CORNER SEC. 16<br/>LAT. = 32.3045785°N<br/>LONG. = 103.6881632°W<br/>NMSP EAST (FT)<br/>N = 475137.91<br/>E = 740670.42</p> <p>SECTION CORNER<br/>LAT. = 32.2973218°N<br/>LONG. = 103.6881624°W<br/>NMSP EAST (FT)<br/>N = 472497.97<br/>E = 740686.53</p> <p>W/4 CORNER SEC. 21<br/>LAT. = 32.2900582°N<br/>LONG. = 103.6881558°W<br/>NMSP EAST (FT)<br/>N = 469855.52<br/>E = 740704.48</p> <p>SW CORNER SEC. 21<br/>LAT. = 32.2828069°N<br/>LONG. = 103.6881552°W<br/>NMSP EAST (FT)<br/>N = 467217.53<br/>E = 740720.53</p> |  | <p>N/4 CORNER SEC. 16<br/>LAT. = 32.3118706°N<br/>LONG. = 103.6796121°W<br/>NMSP EAST (FT)<br/>N = 477806.75<br/>E = 743296.24</p> <p>QUARTER CORNER<br/>LAT. = 32.2973519°N<br/>LONG. = 103.6796130°W<br/>NMSP EAST (FT)<br/>N = 472524.93<br/>E = 743328.17</p> <p>S/4 CORNER SEC. 21<br/>LAT. = 32.2828480°N<br/>LONG. = 103.6796166°W<br/>NMSP EAST (FT)<br/>N = 467248.45<br/>E = 743359.23</p> |  | <p>NE CORNER SEC. 16<br/>LAT. = 32.3118987°N<br/>LONG. = 103.6710683°W<br/>NMSP EAST (FT)<br/>N = 477833.18<br/>E = 745935.72</p> <p>E/4 CORNER SEC. 16<br/>LAT. = 32.3046362°N<br/>LONG. = 103.6710674°W<br/>NMSP EAST (FT)<br/>N = 475191.11<br/>E = 745952.33</p> <p>SECTION CORNER<br/>LAT. = 32.2973762°N<br/>LONG. = 103.6710664°W<br/>NMSP EAST (FT)<br/>N = 472549.96<br/>E = 745968.95</p> <p>E/4 CORNER SEC. 21<br/>LAT. = 32.2901167°N<br/>LONG. = 103.6710640°W<br/>NMSP EAST (FT)<br/>N = 469908.98<br/>E = 745986.01</p> <p>SE CORNER SEC. 21<br/>LAT. = 32.2828569°N<br/>LONG. = 103.6710470°W<br/>NMSP EAST (FT)<br/>N = 467267.93<br/>E = 746007.58</p> |  | <p><b><sup>17</sup> OPERATOR CERTIFICATION</b></p> <p>I hereby certify that the information contained herein is true and complete to the best of my knowledge and belief, and that this organization either owns a working interest or unleased mineral interest in the land including the proposed bottom hole location or has a right to drill this well at this location pursuant to a contract with an owner of such a mineral or working interest, or to a voluntary pooling agreement or a compulsory pooling order heretofore entered by the division.</p> <p><i>Jenny Harms</i> 1/3/2023<br/>Signature Date<br/><b>JENNY HARMS</b><br/>Printed Name<br/><b>JENNY.HARMS@DVN.COM</b><br/>E-mail Address</p> <p><b><sup>18</sup> SURVEYOR CERTIFICATION</b></p> <p>I hereby certify that the well location shown on this plat was plotted from field notes of actual surveys made by me or under my supervision, and that the same is true and correct to the best of my belief.</p> <p>JULY 29, 2021<br/>Date of Survey</p> <p><i>ALIMON F. JARAMILLO</i><br/>Signature and Seal of Professional Surveyor<br/>Certificate Number: 12797<br/>SURV. NO. 8976</p> |
|--|--|--|--|--|--|--|

Intent ☒ As Drilled ☐

|  |   |                     |
|--|---|---------------------|
| API #  |   |                     |
| Operator Name:<br>DEVON ENERGY PRODUCTION<br>COMPANY, L.P. | Property Name:<br>FLOOFY CAT 21-16 FED STATE<br>COM | Well Number<br>526H |

## Kick Off Point (KOP)

| UL                      | Section | Township | Range | Lot | Feet                       | From N/S | Feet     | From E/W | County    |
|-------------------------|---------|----------|-------|-----|----------------------------|----------|----------|----------|-----------|
|                         | 21      | 23S      | 32E   |     | 56 FSL                     |          | 1721 FEL |          | LEA       |
| Latitude<br>32.28291234 |         |          |       |     | Longitude<br>-103.67669822 |          |          |          | NAD<br>83 |

## First Take Point (FTP)

| UL                     | Section | Township | Range | Lot | Feet                     | From N/S | Feet | From E/W | County    |
|------------------------|---------|----------|-------|-----|--------------------------|----------|------|----------|-----------|
| O                      | 21      | 23S      | 32E   |     | 100                      | SOUTH    | 1650 | EAST     | LEA       |
| Latitude<br>32.2831262 |         |          |       |     | Longitude<br>103.6763855 |          |      |          | NAD<br>83 |

## Last Take Point (LTP)

| UL                     | Section | Township | Range | Lot | Feet                     | From N/S | Feet | From E/W | County    |
|------------------------|---------|----------|-------|-----|--------------------------|----------|------|----------|-----------|
| B                      | 16      | 23S      | 32E   |     | 100                      | NORTH    | 1650 | EAST     | LEA       |
| Latitude<br>32.3116064 |         |          |       |     | Longitude<br>103.6764078 |          |      |          | NAD<br>83 |

Is this well the defining well for the Horizontal Spacing Unit?

☐ NO

Is this well an infill well?

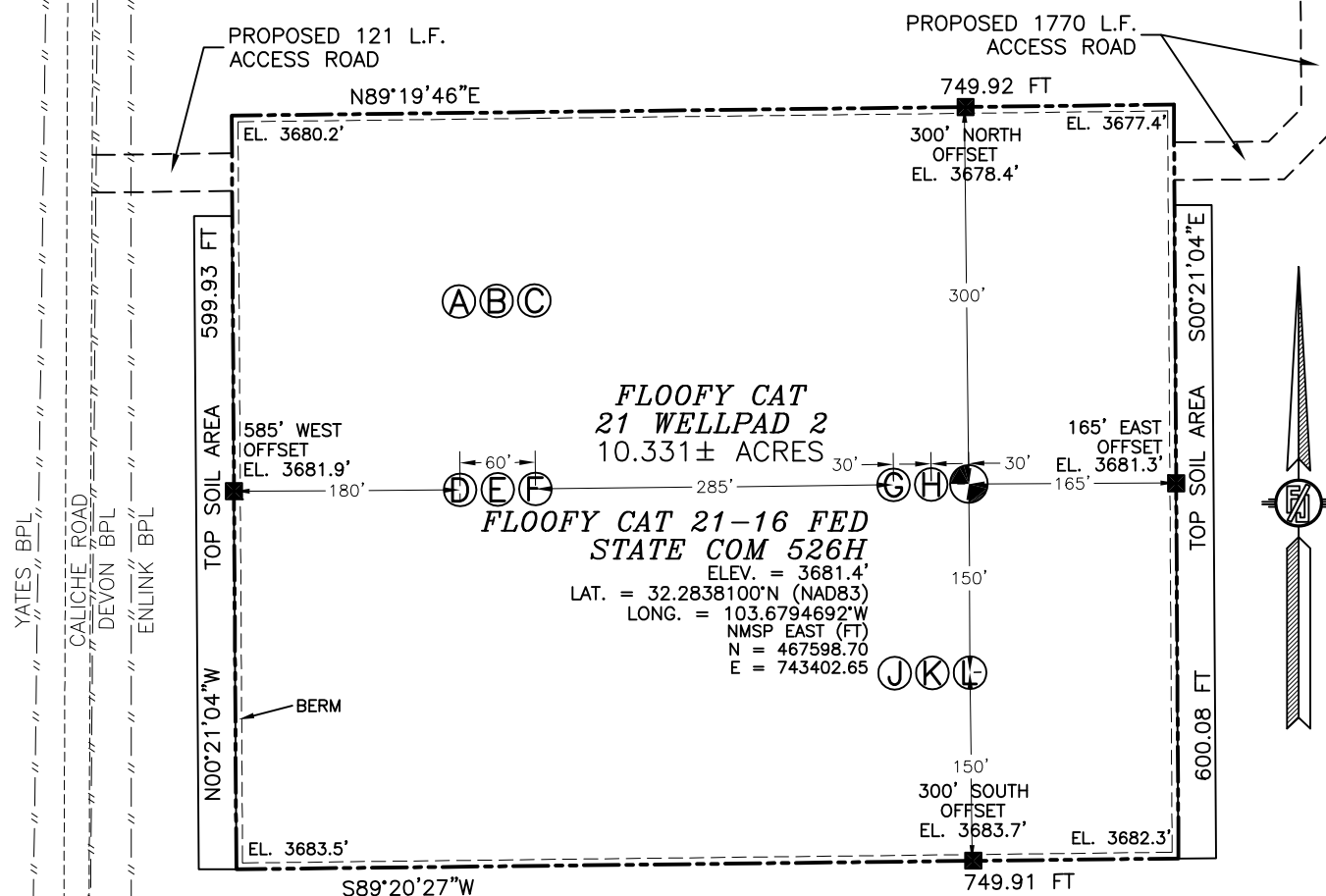
☐ YES

If infill is yes please provide API if available, Operator Name and well number for Defining well for Horizontal Spacing Unit.

|                |                |             |
|----------------|----------------|-------------|
| API #          |                |             |
| Operator Name: | Property Name: | Well Number |

KZ 06/29/2018

**SECTION 21, TOWNSHIP 23 SOUTH, RANGE 32 EAST, N.M.P.M.  
LEA COUNTY, STATE OF NEW MEXICO  
SITE MAP**



SEC. 21  
SEC. 28

- Ⓐ FLOOFY CAT 21-16 FED STATE COM 523H
- Ⓑ FLOOFY CAT 21-16 FED STATE COM 122H
- Ⓒ FLOOFY CAT 21-16 FED STATE COM 524H
- Ⓓ FLOOFY CAT 21-16 FED STATE COM 712H

- Ⓔ FLOOFY CAT 21-16 FED STATE COM 612H
- Ⓕ FLOOFY CAT 21-16 FED STATE COM 732H
- Ⓖ FLOOFY CAT 21-16 FED STATE COM 525H
- Ⓗ FLOOFY CAT 21-16 FED STATE COM 123H

- Ⓛ FLOOFY CAT 21-16 FED STATE COM 526H
- Ⓜ FLOOFY CAT 21-16 FED STATE COM 713H
- Ⓚ FLOOFY CAT 21-16 FED STATE COM 613H
- Ⓛ FLOOFY CAT 21-16 FED STATE COM 733H

015 75 150 300

SCALE 1" = 150'

**DIRECTIONS TO LOCATION**

FROM THE INTERSECTION OF STATE HIGHWAY 128 AND CR. BUCK JACKSON ROAD GO NORTHWEST 0.65 OF A MILE (ABOUT 200' NORTHWEST OF MILE POST 19), TURN RIGHT ON CALICHE ROAD GO 0.76 MILES TO CALICHE ROAD ON LEFT. GO NORTHWEST ABOUT 0.65 OF A MILE TO EXISTING PAD AND TANKS. GO NORTHEAST AROUND PAD ABOUT 0.1 OF A MILE TO ROAD INTERSECTION. GO NORTH 0.1 OF A MILE TO FLAGGED ACCESS ROAD TO THE RIGHT, GO EAST 421' TO NORTHWEST PAD CORNER FOR THIS LOCATION.

I, FILMON F. JARAMILLO, A NEW MEXICO LICENSED PROFESSIONAL SURVEYOR CERTIFY THAT I HAVE DIRECTED AND AM RESPONSIBLE FOR THIS SURVEY, THAT THIS SURVEY IS TRUE AND CORRECT TO THE BEST OF MY KNOWLEDGE AND BELIEF AND THAT I HAVE COMPLIED WITH THE MINIMUM STANDARDS FOR SURVEYING IN NEW MEXICO.

FILMON F. JARAMILLO, LICENSE NO. 2398

**MADRON PROFESSIONAL SURVEYING, INC.**

301 SOUTH CANAL  
(575) 234-3341

**CARLSBAD, NEW MEXICO**

**DEVON ENERGY PRODUCTION COMPANY, L.P.**  
**FLOOFY CAT 21-16 FED STATE COM 526H**  
LOCATED 350 FT. FROM THE SOUTH LINE  
AND 2603 FT. FROM THE EAST LINE OF  
SECTION 21, TOWNSHIP 23 SOUTH,  
RANGE 32 EAST, N.M.P.M.  
LEA COUNTY, STATE OF NEW MEXICO

JULY 29, 2021

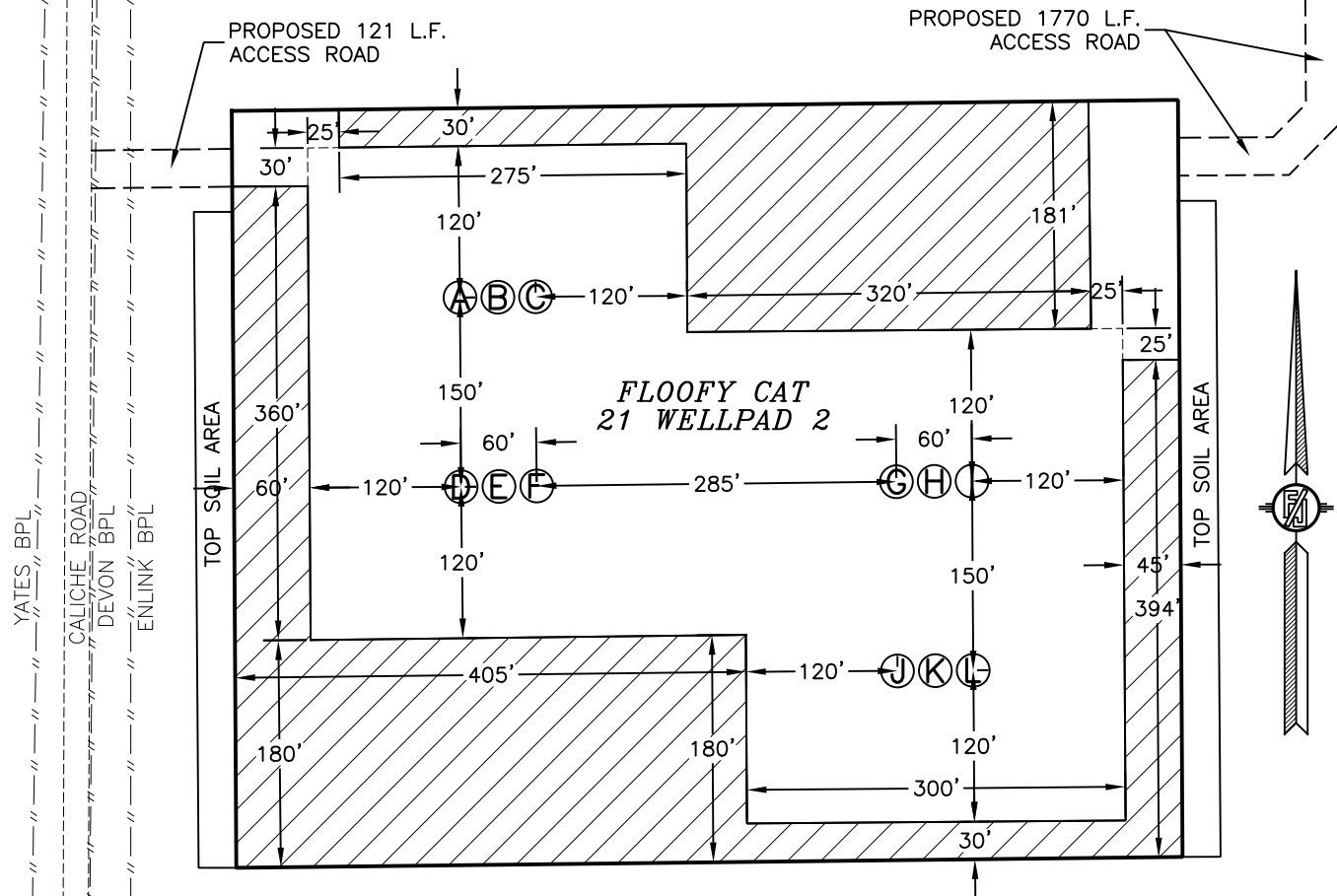
SURVEY NO. 8976



SECTION 21, TOWNSHIP 23 SOUTH, RANGE 32 EAST, N.M.P.M.  
LEA COUNTY, STATE OF NEW MEXICO  
INTERIM SITE BUILD PLAN



DENOTES INTERIM PAD  
RECLAMATION AREA



- Ⓐ FLOOFY CAT 21-16 FED  
STATE COM 523H  
Ⓑ FLOOFY CAT 21-16 FED  
STATE COM 122H  
Ⓒ FLOOFY CAT 21-16 FED  
STATE COM 524H  
Ⓓ FLOOFY CAT 21-16 FED  
STATE COM 712H

- Ⓔ FLOOFY CAT 21-16 FED  
STATE COM 612H  
Ⓕ FLOOFY CAT 21-16 FED  
STATE COM 732H  
Ⓖ FLOOFY CAT 21-16 FED  
STATE COM 525H  
Ⓗ FLOOFY CAT 21-16 FED  
STATE COM 123H

- Ⓘ FLOOFY CAT 21-16 FED  
STATE COM 526H  
Ⓙ FLOOFY CAT 21-16 FED  
STATE COM 713H  
Ⓚ FLOOFY CAT 21-16 FED  
STATE COM 613H  
Ⓛ FLOOFY CAT 21-16 FED  
STATE COM 733H

015 75 150 300  
SCALE 1" = 150'

4.289± ACRES INTERIM PAD RECLAMATION AREA  
6.042± ACRES NON-RECLAIMED AREA  
10.331± ACRES FLOOFY CAT 21 WELLPAD 2

DEVON ENERGY PRODUCTION COMPANY, L.P.  
**FLOOFY CAT 21-16 FED STATE COM 526H**  
LOCATED 350 FT. FROM THE SOUTH LINE  
AND 2603 FT. FROM THE EAST LINE OF  
SECTION 21, TOWNSHIP 23 SOUTH,  
RANGE 32 EAST, N.M.P.M.  
LEA COUNTY, STATE OF NEW MEXICO

JULY 29, 2021

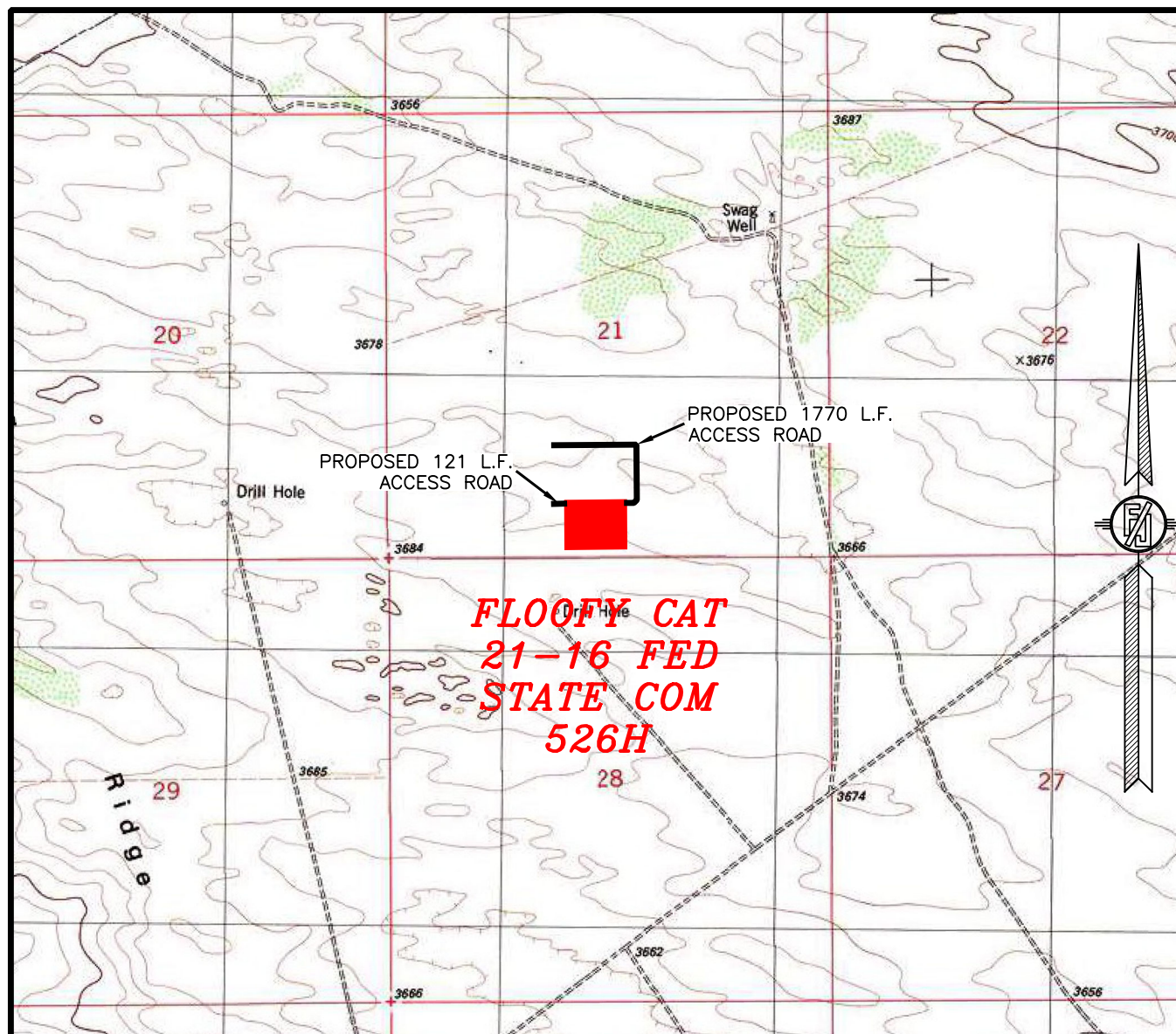
SURVEY NO. 8976

MADRON SURVEYING, INC.

301 SOUTH CANAL  
(575) 234-3341

CARLSBAD, NEW MEXICO

SECTION 21, TOWNSHIP 23 SOUTH, RANGE 32 EAST, N.M.P.M.  
LEA COUNTY, STATE OF NEW MEXICO  
LOCATION VERIFICATION MAP



USGS QUAD MAP:  
BOOTLEG RIDGE

NOT TO SCALE

DEVON ENERGY PRODUCTION COMPANY, L.P.  
**FLOOFY CAT 21-16 FED STATE COM 526H**  
LOCATED 350 FT. FROM THE SOUTH LINE  
AND 2603 FT. FROM THE EAST LINE OF  
SECTION 21, TOWNSHIP 23 SOUTH,  
RANGE 32 EAST, N.M.P.M.  
LEA COUNTY, STATE OF NEW MEXICO

JULY 29, 2021

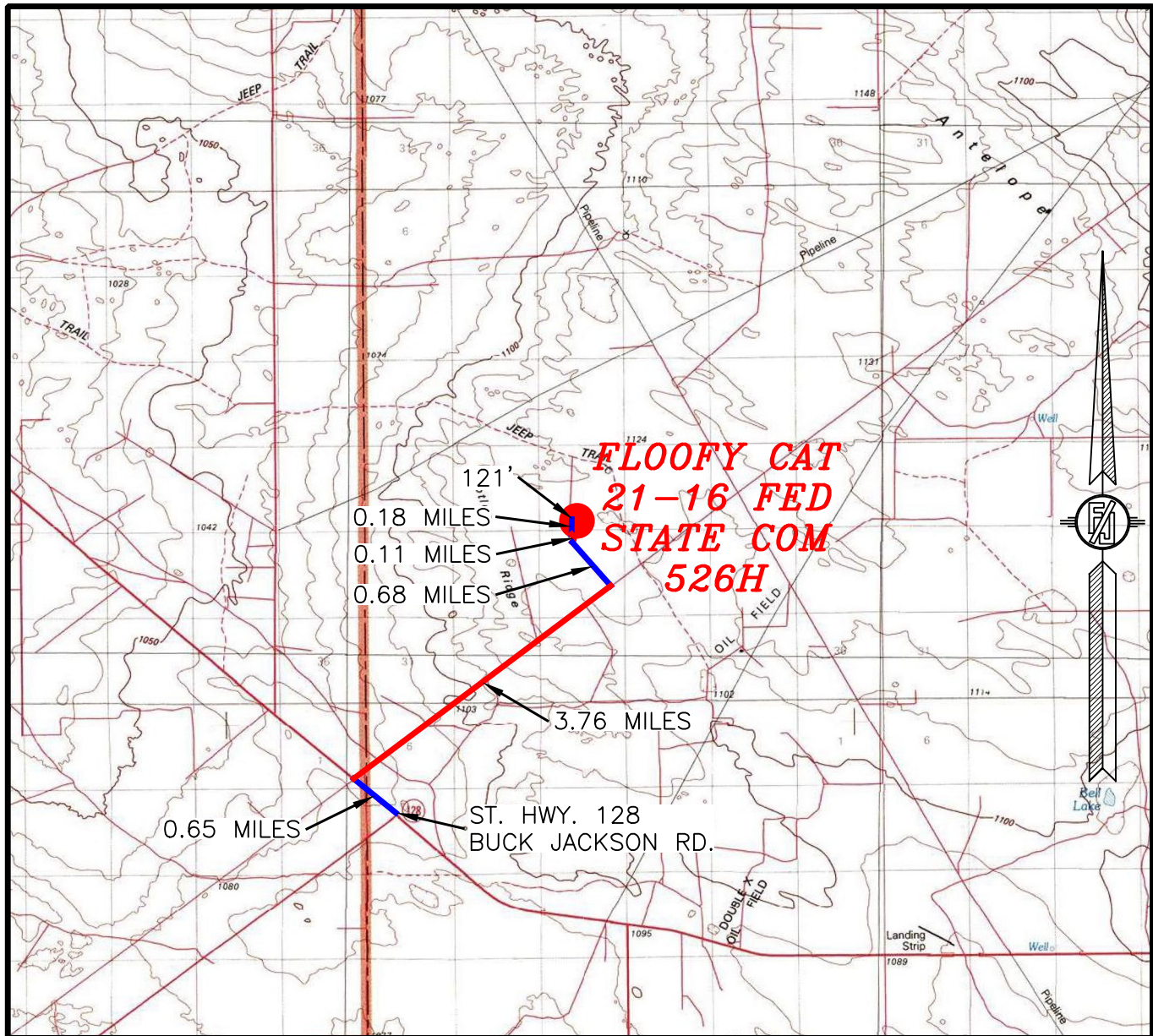
MADRON SURVEYING, INC.

301 SOUTH CANAL  
(575) 234-3341

SURVEY NO. 8976  
CARLSBAD, NEW MEXICO



SECTION 21, TOWNSHIP 23 SOUTH, RANGE 32 EAST, N.M.P.M.  
LEA COUNTY, STATE OF NEW MEXICO  
VICINITY MAP



DISTANCES IN MILES

NOT TO SCALE

**DIRECTIONS TO LOCATION**

FROM THE INTERSECTION OF STATE HIGHWAY 128 AND CR. BUCK JACKSON ROAD GO NORTHWEST 0.65 OF A MILE (ABOUT 200' NORTHWEST OF MILE POST 19), TURN RIGHT ON CALICHE ROAD GO 3.76 MILES TO CALICHE ROAD ON LEFT. GO NORTHWEST ABOUT 0.68 OF A MILE TO EXISTING PAD AND TANKS. GO NORTHEAST AROUND PAD ABOUT 0.11 OF A MILE TO ROAD INTERSECTION, GO NORTH 0.18 OF A MILE TO FLAGGED ACCESS ROAD TO THE RIGHT, GO EAST 121' TO NORTHWEST PAD CORNER FOR THIS LOCATION.

**DEVON ENERGY PRODUCTION COMPANY, L.P.****FLOOFY CAT 21-16 FED STATE COM 526H**

LOCATED 350 FT. FROM THE SOUTH LINE

AND 2603 FT. FROM THE EAST LINE OF

SECTION 21, TOWNSHIP 23 SOUTH,

RANGE 32 EAST, N.M.P.M.

LEA COUNTY, STATE OF NEW MEXICO

JULY 29, 2021

SURVEY NO. 8976

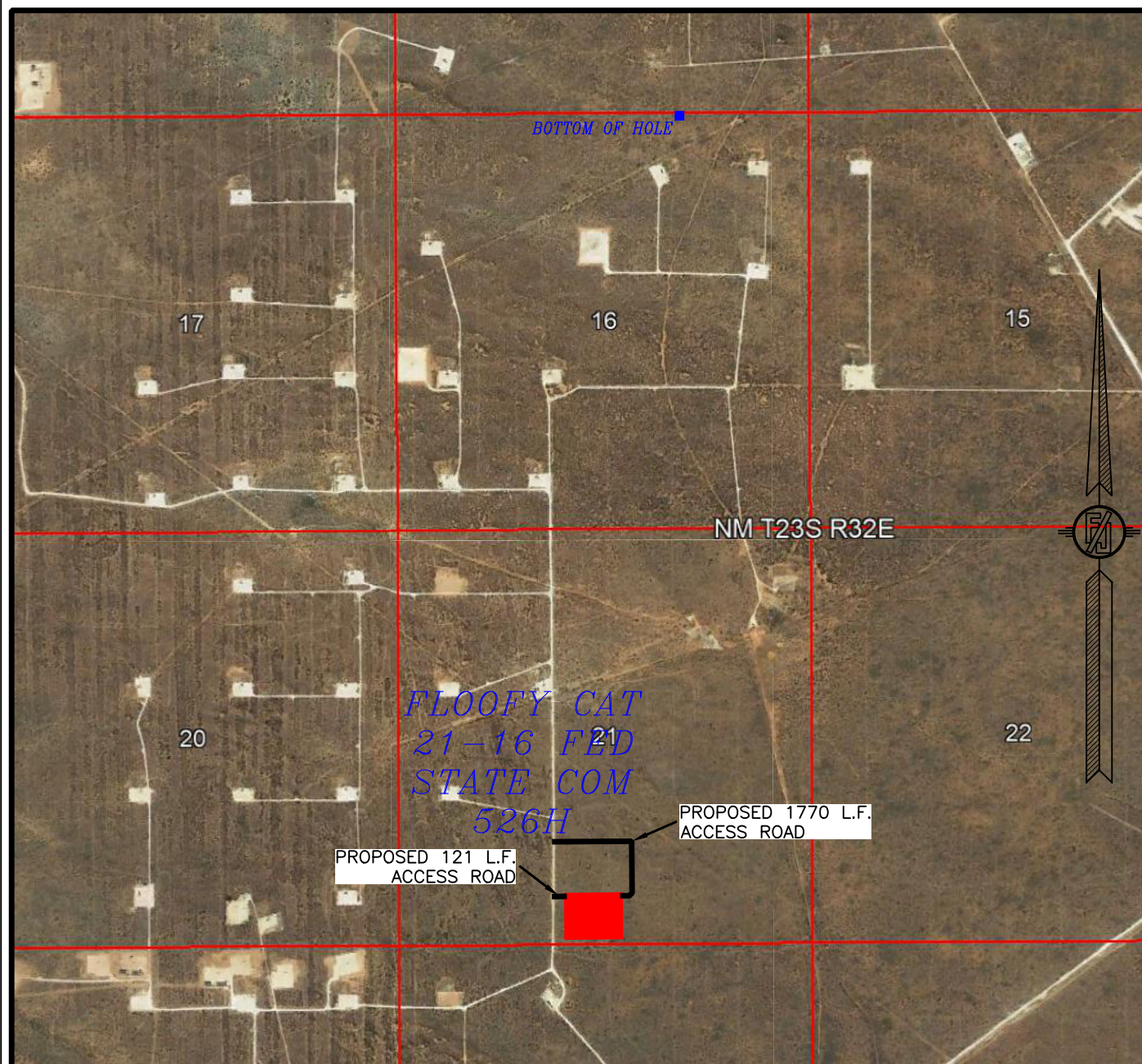
MADRON SURVEYING, INC. 301 SOUTH CANAL

(575) 234-3341

CARLSBAD, NEW MEXICO



SECTION 21, TOWNSHIP 23 SOUTH, RANGE 32 EAST, N.M.P.M.  
LEA COUNTY, STATE OF NEW MEXICO  
**AERIAL PHOTO**



NOT TO SCALE  
AERIAL PHOTO:  
GOOGLE EARTH  
NOV. 2017

**DEVON ENERGY PRODUCTION COMPANY, L.P.**  
**FLOOFY CAT 21-16 FED STATE COM 526H**  
LOCATED 350 FT. FROM THE SOUTH LINE  
AND 2603 FT. FROM THE EAST LINE OF  
SECTION 21, TOWNSHIP 23 SOUTH,  
RANGE 32 EAST, N.M.P.M.  
LEA COUNTY, STATE OF NEW MEXICO

JULY 29, 2021

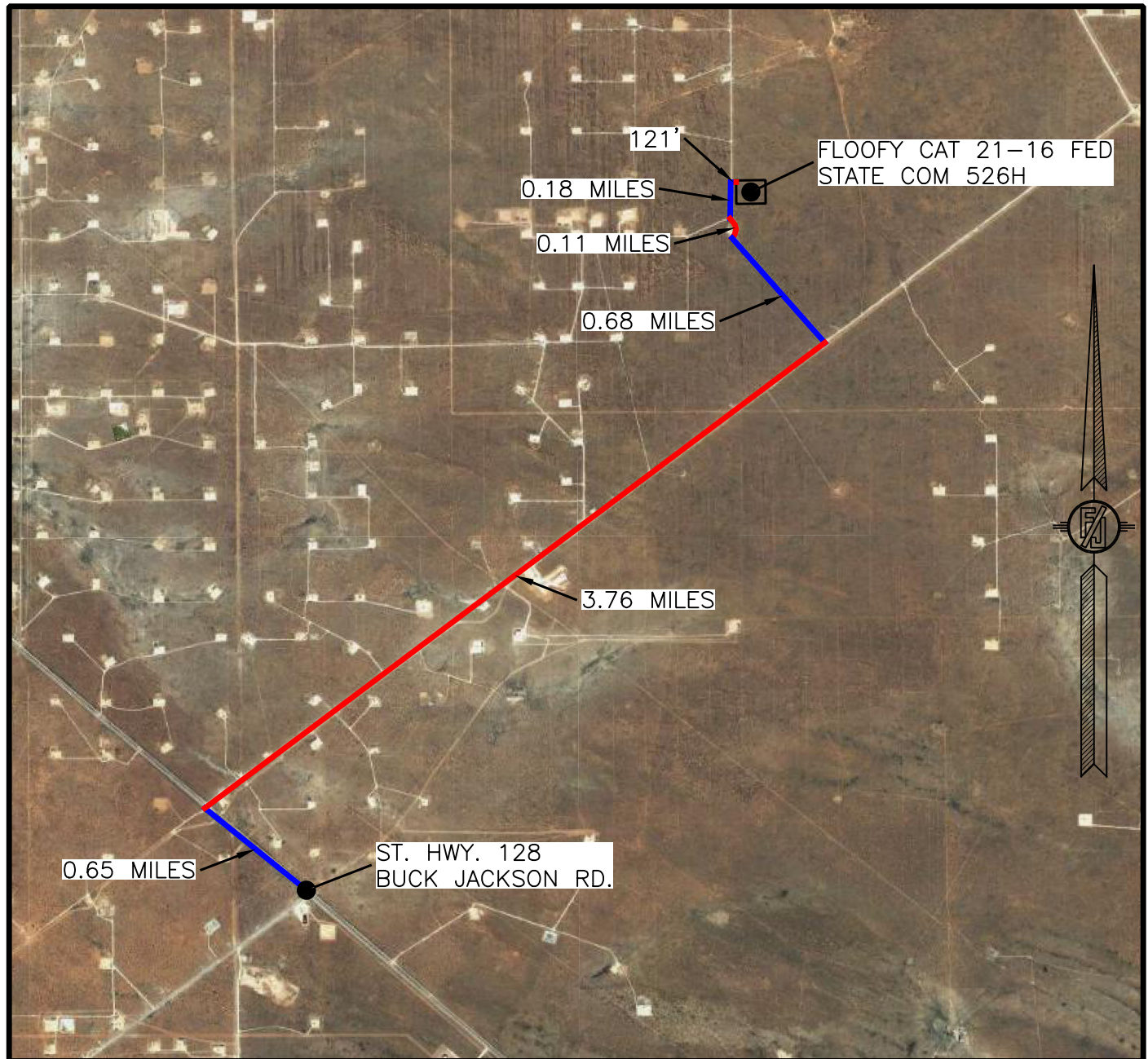
SURVEY NO. 8976

MADRON SURVEYING, INC. 301 SOUTH CANAL  
(575) 234-3341

CARLSBAD, NEW MEXICO



SECTION 21, TOWNSHIP 23 SOUTH, RANGE 32 EAST, N.M.P.M.  
LEA COUNTY, STATE OF NEW MEXICO  
**AERIAL ACCESS ROUTE MAP**



NOT TO SCALE  
AERIAL PHOTO:  
GOOGLE EARTH  
NOV. 2017

**DEVON ENERGY PRODUCTION COMPANY, L.P.**  
**FLOOFY CAT 21-16 FED STATE COM 526H**  
LOCATED 350 FT. FROM THE SOUTH LINE  
AND 2603 FT. FROM THE EAST LINE OF  
SECTION 21, TOWNSHIP 23 SOUTH,  
RANGE 32 EAST, N.M.P.M.  
LEA COUNTY, STATE OF NEW MEXICO

JULY 29, 2021

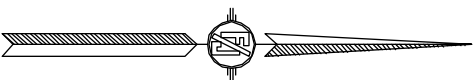
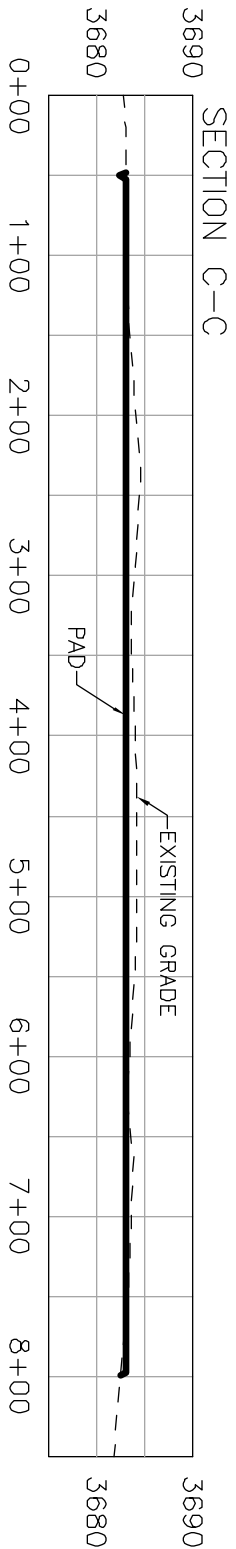
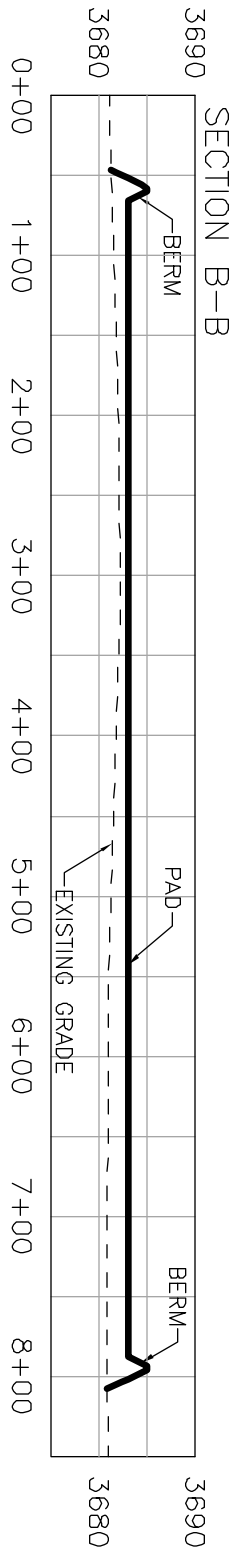
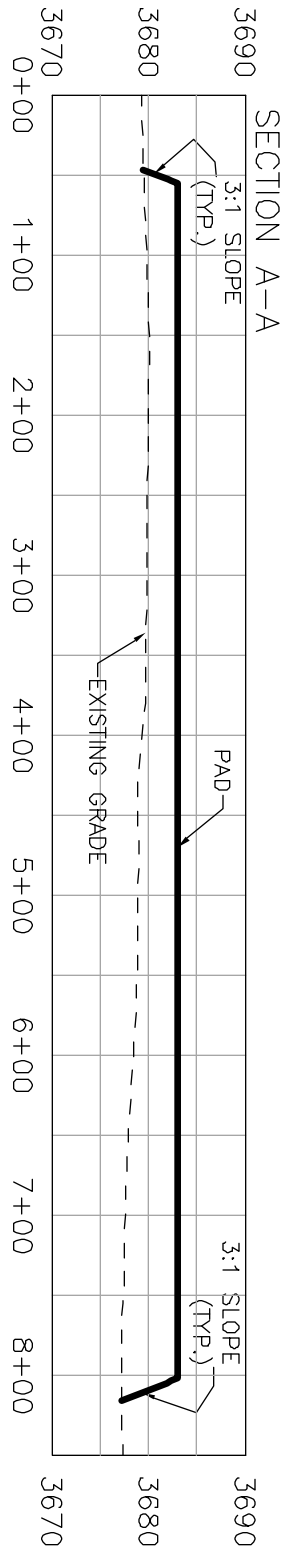
SURVEY NO. 8976

MADRON SURVEYING, INC. 301 SOUTH CANAL  
(575) 234-3341

CARLSBAD, NEW MEXICO



CROSS-SECTIONS



I, FILMON F. JARAMA, A NEW MEXICO REGISTERED PROFESSIONAL SURVEYOR CERTIFICATE NO. 12299, HEREBY CERTIFY THAT THIS SURVEY, THE SURVEY INSTRUMENTS AND THE BEST OF MY KNOWLEDGE AND BELIEF, THIS SURVEY AND PLAN MEET THE MINIMUM STANDARDS FOR SURVEYING IN NEW MEXICO.

DEVON ENERGY PRODUCTION COMPANY, L.P.  
PAD GRADING AND CROSS SECTIONS  
FOR FLOOFY CAT 21-16 FED STATE COM 526H  
SECTION 21, TOWNSHIP 23 SOUTH,  
RANGE 32 EAST, N.M.P.M.,  
LEA COUNTY, STATE OF NEW MEXICO



| CUT         | FILL         | NET                 |
|-------------|--------------|---------------------|
| 4080 CU. YD | 29175 CU. YD | 25095 CU. YD (FILL) |

EARTHWORK QUANTITIES ARE ESTIMATED

FILMON F. JARAMA, A NEW MEXICO REGISTERED PROFESSIONAL SURVEYOR  
JULY 29, 2021  
DEVON ENERGY PRODUCTION COMPANY, L.P.  
PAD GRADING AND CROSS SECTIONS  
FOR FLOOFY CAT 21-16 FED STATE COM 526H  
SECTION 21, TOWNSHIP 23 SOUTH,  
RANGE 32 EAST, N.M.P.M.,  
LEA COUNTY, STATE OF NEW MEXICO

301 SOUTH CANAL  
(979) 234-3341  
CARLSBAD, NEW MEXICO  
SURVEY NO. 8976

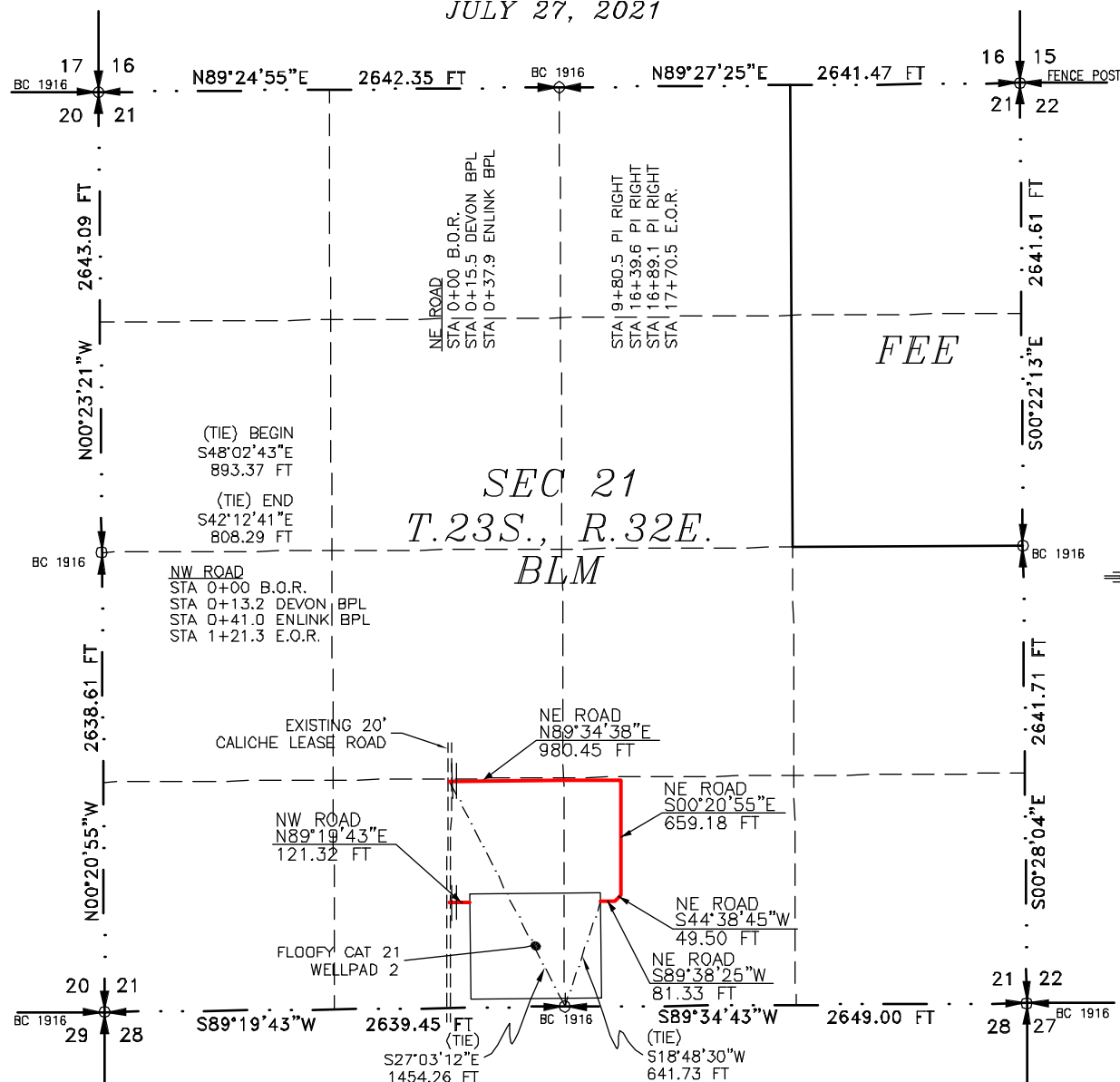
SHEET 2-2  
2



**ACCESS ROAD PLAT (7660507R)**

ACCESS ROADS TO THE FLOOFY CAT 21 WELLPAD 2 (FLOOFY CAT 21-16 FED STATE COM  
523H, 122H, 524H, 525H, 123H, 526H, 712H, 612H, 732H, 713H, 613H, & 733H)

DEVON ENERGY PRODUCTION COMPANY, L.P.  
CENTERLINE SURVEY OF AN ACCESS ROAD CROSSING  
SECTION 21, TOWNSHIP 23 SOUTH, RANGE 32 EAST, N.M.P.M.  
LEA COUNTY, STATE OF NEW MEXICO  
JULY 27, 2021



SEE NEXT SHEET (2-2) FOR DESCRIPTION

**GENERAL NOTES**

- 1.) THE INTENT OF THIS ROUTE SURVEY IS TO ACQUIRE AN EASEMENT.
- 2.) BASIS OF BEARING AND DISTANCE IS NMSP EAST (NAD83) MODIFIED TO SURFACE COORDINATES. NAD 83 (FEET) AND NAVD 88 (FEET) COORDINATE SYSTEMS USED IN THE SURVEY.

**SURVEYOR CERTIFICATE**

I, FILIMON F. JARAMILLO, A NEW MEXICO PROFESSIONAL SURVEYOR NO. 12797, HEREBY CERTIFY THAT I HAVE CONDUCTED AND AM RESPONSIBLE FOR THIS SURVEY, THAT THIS SURVEY IS TRUE AND CORRECT TO THE BEST OF MY KNOWLEDGE AND BELIEF, AND THAT THIS SURVEY AND PLAT MEET THE MINIMUM STANDARDS FOR LAND SURVEYING IN THE STATE OF NEW MEXICO.

IN WITNESS WHEREOF, THIS CERTIFICATE IS EXECUTED AT CARLSBAD, NEW MEXICO, THIS 15th DAY OF AUGUST 2021

FILIMON F. JARAMILLO, P.E.S.

MADRON SURVEYING, INC.  
301 SOUTH CANAL  
CARLSBAD, NEW MEXICO 88220  
Phone (575) 234-3341

SHEET: 1-2

MADRON SURVEYING, INC. CARLSBAD, NEW MEXICO

SURVEY NO. 8976

**ACCESS ROAD PLAT (7660507R)**

ACCESS ROADS TO THE FLOOFY CAT 21 WELLPAD 2 (FLOOFY CAT 21-16 FED STATE COM  
523H, 122H, 524H, 525H, 123H, 526H, 712H, 612H, 732H, 713H, 613H, & 733H)

**DEVON ENERGY PRODUCTION COMPANY, L.P.**  
**CENTERLINE SURVEY OF AN ACCESS ROAD CROSSING**  
**SECTION 21, TOWNSHIP 23 SOUTH, RANGE 32 EAST, N.M.P.M.**  
**LEA COUNTY, STATE OF NEW MEXICO**  
**JULY 27, 2021**

**DESCRIPTION**

A STRIP OF LAND 30 FEET WIDE CROSSING BUREAU OF LAND MANAGEMENT LAND IN SECTION 21, TOWNSHIP 23 SOUTH, RANGE 32 EAST, N.M.P.M., LEA COUNTY, STATE OF NEW MEXICO AND BEING 15 FEET EACH SIDE OF THE FOLLOWING DESCRIBED CENTERLINE SURVEY:

**NORTHEAST ACCESS ROAD**

BEGINNING AT A POINT WITHIN THE SE/4 SW/4 OF SAID SECTION 21, TOWNSHIP 23 SOUTH, RANGE 32 EAST, N.M.P.M. WHENCE THE SOUTH QUARTER CORNER OF SAID SECTION 21, TOWNSHIP 23 SOUTH, RANGE 32 EAST, N.M.P.M. BEARS S27°03'12"E, A DISTANCE OF 1454.26 FEET;  
 THENCE N89°34'38"E A DISTANCE OF 980.45 FEET TO AN ANGLE POINT OF THE LINE HEREIN DESCRIBED;  
 THENCE S00°20'55"E A DISTANCE OF 659.18 FEET TO AN ANGLE POINT OF THE LINE HEREIN DESCRIBED;  
 THENCE S44°38'45"W A DISTANCE OF 49.50 FEET TO AN ANGLE POINT OF THE LINE HEREIN DESCRIBED;  
 THENCE S89°38'25"W A DISTANCE OF 81.33 FEET THE TERMINUS OF THIS CENTERLINE SURVEY, WHENCE THE SOUTH QUARTER CORNER OF SAID SECTION 21, TOWNSHIP 23 SOUTH, RANGE 32 EAST, N.M.P.M. BEARS S18°48'30"W, A DISTANCE OF 641.73 FEET;

SAID STRIP OF LAND BEING 1770.46 FEET OR 107.30 RODS IN LENGTH, CONTAINING 1.219 ACRES MORE OR LESS AND BEING ALLOCATED BY FORTIES AS FOLLOWS:

SE/4 SW/4 653.79 L.F. 39.62 RODS 0.450 ACRES  
 SW/4 SE/4 1116.67 L.F. 67.68 RODS 0.769 ACRES

**NORTHWEST ACCESS ROAD**

BEGINNING AT A POINT WITHIN THE SE/4 SW/4 OF SAID SECTION 21, TOWNSHIP 23 SOUTH, RANGE 32 EAST, N.M.P.M. WHENCE THE SOUTH QUARTER CORNER OF SAID SECTION 21, TOWNSHIP 23 SOUTH, RANGE 32 EAST, N.M.P.M. BEARS S48°02'43"E, A DISTANCE OF 893.37 FEET;  
 THENCE N89°19'43"E A DISTANCE OF 121.32 FEET THE TERMINUS OF THIS CENTERLINE SURVEY, WHENCE THE SOUTH QUARTER CORNER OF SAID SECTION 21, TOWNSHIP 23 SOUTH, RANGE 32 EAST, N.M.P.M. BEARS S42°12'41"E, A DISTANCE OF 808.29 FEET;

SAID STRIP OF LAND BEING 121.32 FEET OR 7.35 RODS IN LENGTH, CONTAINING 0.084 ACRES MORE OR LESS AND BEING ALLOCATED BY FORTIES AS FOLLOWS:

SE/4 SW/4 121.32 L.F. 7.35 RODS 0.084 ACRES

**GENERAL NOTES**

- 1.) THE INTENT OF THIS ROUTE SURVEY IS TO ACQUIRE AN EASEMENT.
- 2.) BASIS OF BEARING AND DISTANCE IS NMSP EAST (NAD83) MODIFIED TO SURFACE COORDINATES. NAD 83 (FEET) AND NAVD 88 (FEET) COORDINATE SYSTEMS USED IN THE SURVEY.

SHEET: 2-2

**MADRON SURVEYING, INC.** 301 SOUTH CANAL CARLSBAD, NEW MEXICO (575) 234-3341

**SURVEYOR CERTIFICATE**

I, FILIMON F. JARAMILLO, A NEW MEXICO PROFESSIONAL SURVEYOR NO. 12797, HEREBY CERTIFY THAT I HAVE CONDUCTED AND AM RESPONSIBLE FOR THIS SURVEY, THAT THIS SURVEY IS TRUE AND CORRECT TO THE BEST OF MY KNOWLEDGE AND BELIEF, AND THAT THIS SURVEY AND PLAT MEET THE MINIMUM STANDARDS FOR LAND SURVEYING IN THE STATE OF NEW MEXICO.

IN WITNESS WHEREOF, THIS CERTIFICATE IS EXECUTED AT CARLSBAD, NEW MEXICO, THIS 28th DAY OF AUGUST 2021

FILIMON F. JARAMILLO  
 12797  
 NEW MEXICO PROFESSIONAL SURVEYOR  
 MADRON SURVEYING, INC.  
 301 SOUTH CANAL  
 CARLSBAD, NEW MEXICO 88220  
 Phone (575) 234-3341

SURVEY NO. 8976

**District I**  
1625 N. French Dr., Hobbs, NM 88240  
Phone:(575) 393-6161 Fax:(575) 393-0720  
**District II**  
811 S. First St., Artesia, NM 88210  
Phone:(575) 748-1283 Fax:(575) 748-9720  
**District III**  
1000 Rio Brazos Rd., Aztec, NM 87410  
Phone:(505) 334-6178 Fax:(505) 334-6170  
**District IV**  
1220 S. St Francis Dr., Santa Fe, NM 87505  
Phone:(505) 476-3470 Fax:(505) 476-3462

**State of New Mexico**  
**Energy, Minerals and Natural Resources**  
**Oil Conservation Division**  
**1220 S. St Francis Dr.**  
**Santa Fe, NM 87505**

CONDITIONS  
  
Action 178344

CONDITIONS

|   |  |
|---|--|
| Operator:<br>DEVON ENERGY PRODUCTION COMPANY, LP<br>333 West Sheridan Ave.<br>Oklahoma City, OK 73102 | OGRID:<br>6137                                       |
|   | Action Number:<br>178344                             |
|   | Action Type:<br>[C-103] NOI Change of Plans (C-103A) |

CONDITIONS

|            |           |                |
|------------|-----------|----------------|
| Created By | Condition | Condition Date |
| pkautz     | None      | 1/24/2023      |