

Form 3160-3
(June 2015)FORM APPROVED
OMB No. 1004-0137
Expires: January 31, 2018

UNITED STATES
DEPARTMENT OF THE INTERIOR
BUREAU OF LAND MANAGEMENT
APPLICATION FOR PERMIT TO DRILL OR REENTER

| | | |
|--|---------------------------------------|---|
| 1a. Type of work: <input type="checkbox"/> DRILL <input type="checkbox"/> REENTER 1b. Type of Well: <input type="checkbox"/> Oil Well <input type="checkbox"/> Gas Well <input type="checkbox"/> Other 1c. Type of Completion: <input type="checkbox"/> Hydraulic Fracturing <input type="checkbox"/> Single Zone <input type="checkbox"/> Multiple Zone | | 5. Lease Serial No. 6. If Indian, Allottee or Tribe Name 7. If Unit or CA Agreement, Name and No. 8. Lease Name and Well No. |
| 2. Name of Operator | | 9. API Well No. 30-015-53341 |
| 3a. Address | 3b. Phone No. (include area code) | 10. Field and Pool, or Exploratory |
| 4. Location of Well (Report location clearly and in accordance with any State requirements. *) At surface At proposed prod. zone | | 11. Sec., T. R. M. or Blk. and Survey or Area |
| 14. Distance in miles and direction from nearest town or post office* | | 12. County or Parish |
| 13. State | | |
| 15. Distance from proposed* location to nearest property or lease line, ft. (Also to nearest drig. unit line, if any) | 16. No of acres in lease | 17. Spacing Unit dedicated to this well |
| 18. Distance from proposed location* to nearest well, drilling, completed, applied for, on this lease, ft. | 19. Proposed Depth | 20. BLM/BIA Bond No. in file |
| 21. Elevations (Show whether DF, KDB, RT, GL, etc.) | 22. Approximate date work will start* | 23. Estimated duration |
| 24. Attachments | | |

The following, completed in accordance with the requirements of Onshore Oil and Gas Order No. 1, and the Hydraulic Fracturing rule per 43 CFR 3162.3-3 (as applicable)

- | | |
|---|---|
| 1. Well plat certified by a registered surveyor. 2. A Drilling Plan. 3. A Surface Use Plan (if the location is on National Forest System Lands, the SUPO must be filed with the appropriate Forest Service Office). | 4. Bond to cover the operations unless covered by an existing bond on file (see Item 20 above). 5. Operator certification. 6. Such other site specific information and/or plans as may be requested by the BLM. |
|---|---|

| | | |
|-------------------------|----------------------|------|
| 25. Signature | Name (Printed/Typed) | Date |
| Title | | |
| Approved by (Signature) | Name (Printed/Typed) | Date |
| Title | | |
| Office | | |

Application approval does not warrant or certify that the applicant holds legal or equitable title to those rights in the subject lease which would entitle the applicant to conduct operations thereon.
Conditions of approval, if any, are attached.

Title 18 U.S.C. Section 1001 and Title 43 U.S.C. Section 1212, make it a crime for any person knowingly and willfully to make to any department or agency of the United States any false, fictitious or fraudulent statements or representations as to any matter within its jurisdiction.

(Continued on page 2)

*(Instructions on page 2)



Approval Date: 05/16/2022

Additional Operator Remarks

Location of Well

0. SHL: NENW / 300 FNL / 1880 FWL / TWSP: 23S / RANGE: 31E / SECTION: 14 / LAT: 32.310907 / LONG: -103.7510398 (TVD: 0 feet, MD: 0 feet)
PPP: NENW / 100 FNL / 1650 FWL / TWSP: 23S / RANGE: 31E / SECTION: 14 / LAT: 32.3114584 / LONG: -103.751784 (TVD: 11610 feet, MD: 11717 feet)
PPP: NESW / 2533 FSL / 1650 FWL / TWSP: 23S / RANGE: 31E / SECTION: 14 / LAT: 32.30239 / LONG: -103.75065 (TVD: 11714 feet, MD: 14200 feet)
PPP: NENW / 167 FNL / 1650 FWL / TWSP: 23S / RANGE: 31E / SECTION: 23 / LAT: 32.293248 / LONG: -103.750049 (TVD: 11713 feet, MD: 16900 feet)
PPP: NENW / 185 FNL / 1650 FWL / TWSP: 23S / RANGE: 31E / SECTION: 26 / LAT: 32.280628 / LONG: -103.751402 (TVD: 11711 feet, MD: 22200 feet)
BHL: SESW / 20 FSL / 1650 FWL / TWSP: 23S / RANGE: 31E / SECTION: 26 / LAT: 32.2682408 / LONG: -103.7517859 (TVD: 11710 feet, MD: 27276 feet)

BLM Point of Contact

Name: Candy Vigil
Title: LIE
Phone: (575) 234-5982
Email: cvigil@blm.gov

CONFIDENTIAL

District I
1625 N. French Dr., Hobbs, NM 88240
Phone: (575) 393-6161 Fax: (575) 393-0720
District II
811 S. First St., Artesia, NM 88210
Phone: (575) 748-1283 Fax: (575) 748-9720
District III
1000 Rio Brazos Road, Aztec, NM 87410
Phone: (505) 334-6178 Fax: (505) 334-6170
District IV
1220 S. St. Francis Dr., Santa Fe, NM 87505
Phone: (505) 476-3460 Fax: (505) 476-3462

State of New Mexico
Energy, Minerals & Natural Resources Department
OIL CONSERVATION DIVISION
1220 South St. Francis Dr.
Santa Fe, NM 87505

Form C-102
Revised August 1, 2011
Submit one copy to appropriate
District Office
☐ AMENDED REPORT

WELL LOCATION AND ACREAGE DEDICATION PLAT

| | | |
|--|--|---|
| ¹ API Number 30-015-53341 | ² Pool Code 96991 | ³ Pool Name SAND DUNES; WOLFCAMP |
| ⁴ Property Code 328888 | ⁵ Property Name GALAPAGOS 14-26 FED COM | ⁶ Well Number 626H |
| ⁷ OGRID No. 6137 | ⁸ Operator Name DEVON ENERGY PRODUCTION COMPANY, L.P. | ⁹ Elevation 3451.6 |

¹⁰ Surface Location

| UL or lot no. | Section | Township | Range | Lot Idn | Feet from the | North/South line | Feet from the | East/West line | County |
|---------------|-----------|-------------|-------------|---------|---------------|------------------|---------------|----------------|-------------|
| C | 14 | 23 S | 31 E | | 300 | NORTH | 1880 | WEST | EDDY |

¹¹ Bottom Hole Location If Different From Surface

| UL or lot no. | Section | Township | Range | Lot Idn | Feet from the | North/South line | Feet from the | East/West line | County |
|---------------|-----------|-------------|-------------|---------|---------------|------------------|---------------|----------------|-------------|
| N | 26 | 23 S | 31 E | | 20 | SOUTH | 1650 | WEST | EDDY |

| | | | |
|---|-------------------------------|----------------------------------|-------------------------|
| ¹² Dedicated Acres 480 | ¹³ Joint or Infill | ¹⁴ Consolidation Code | ¹⁵ Order No. |
|---|-------------------------------|----------------------------------|-------------------------|

No allowable will be assigned to this completion until all interests have been consolidated or a non-standard unit has been approved by the division.

| | | | |
|--|--|--|--|
| <p>17 OPERATOR CERTIFICATION</p> <p>I hereby certify that the information contained herein is true and complete to the best of my knowledge and belief, and that this organization either owns a working interest or unleased mineral interest in the land including the proposed bottom hole location or has a right to drill this well at this location pursuant to a contract with an owner of such a mineral or working interest, or to a voluntary pooling agreement or a compulsory pooling order heretofore entered by the division.</p> <p><i>Jenny Harms</i> 2-23-2021</p> <p>Signature _____ Date _____</p> <p>JENNY HARMS</p> <p>Printed Name _____</p> <p>JENNY.HARMS@DVN.COM</p> <p>E-mail Address _____</p> | | <p>18 SURVEYOR CERTIFICATION</p> <p>I hereby certify that the well location shown on this plat was plotted from field notes of actual surveys made by me or under my supervision, and that the same is true and correct to the best of my belief.</p> <p>DECEMBER 30, 2020</p> <p>Date of Survey _____</p> <p>Signature and Seal of Professional Surveyor: <i>William F. Jaramila</i></p> <p>Certificate Number: WILLIAM F. JARAMILA, PLS 12797</p> <p>PLS 12797 REGISTERED PROFESSIONAL SURVEYOR NO. 8754</p> | |
|--|--|--|--|

Intent ☒ As Drilled ☐

| | | |
|--|---|---------------------|
| API # | | |
| Operator Name: DEVON ENERGY PRODUCTION COMPANY, L.P. | Property Name: GALAPAGOS 14-26 FED COM | Well Number 626H |

Kick Off Point (KOP)

| | | | | | | | | | |
|-------------------------|---------------|-----------------|--------------|-----|----------------------------|----------|------------------|----------|----------------|
| UL | Section 14 | Township 23S | Range 31E | Lot | Feet 43 FNL | From N/S | Feet 1650 FWL | From E/W | County EDDY |
| Latitude 32.31152163 | | | | | Longitude -103.75178405 | | | | NAD 83 |

First Take Point (FTP)

| | | | | | | | | | |
|------------------------|---------------|-----------------|--------------|-----|--------------------------|-------------------|--------------|------------------|----------------|
| UL C | Section 14 | Township 23S | Range 31E | Lot | Feet 100 | From N/S NORTH | Feet 1650 | From E/W WEST | County EDDY |
| Latitude 32.3114584 | | | | | Longitude 103.7517840 | | | | NAD 83 |

Last Take Point (LTP)

| | | | | | | | | | |
|------------------------|---------------|-----------------|--------------|-----|--------------------------|-------------------|--------------|------------------|----------------|
| UL N | Section 26 | Township 23S | Range 31E | Lot | Feet 100 | From N/S SOUTH | Feet 1650 | From E/W WEST | County EDDY |
| Latitude 32.2684606 | | | | | Longitude 103.7517859 | | | | NAD 83 |

Is this well the defining well for the Horizontal Spacing Unit?

☐ NO

Is this well an infill well?

☐ YES

If infill is yes please provide API if available, Operator Name and well number for Defining well for Horizontal Spacing Unit.

| | | |
|----------------|----------------|-------------|
| API # | | |
| Operator Name: | Property Name: | Well Number |

KZ 06/29/2018

State of New Mexico
Energy, Minerals and Natural Resources Department

Submit Electronically
Via E-permitting

Oil Conservation Division
1220 South St. Francis Dr.
Santa Fe, NM 87505

NATURAL GAS MANAGEMENT PLAN

This Natural Gas Management Plan must be submitted with each Application for Permit to Drill (APD) for a new or recompleted well.

Section 1 – Plan Description

Effective May 25, 2021

I. Operator: Devon Energy Production Company, L.P. **OGRID:** 6137 **Date:** 1 / 25 / 2023

II. Type: ☒ Original ☐ Amendment due to ☐ 19.15.27.9.D(6)(a) NMAC ☐ 19.15.27.9.D(6)(b) NMAC ☐ Other.

If Other, please describe: _____

III. Well(s): Provide the following information for each new or recompleted well or set of wells proposed to be drilled or proposed to be recompleted from a single well pad or connected to a central delivery point.

| Well Name | API | ULSTR | Footages | Anticipated Oil BBL/D | Anticipated Gas MCF/D | Anticipated Produced Water BBL/D |
|--------------|-----|-------|----------|-----------------------|-----------------------|----------------------------------|
| See Attached | | | | | | |
| | | | | | | |

IV. Central Delivery Point Name: SEE ATTACHMENTS [See 19.15.27.9(D)(1) NMAC]

V. Anticipated Schedule: Provide the following information for each new or recompleted well or set of wells proposed to be drilled or proposed to be recompleted from a single well pad or connected to a central delivery point.

| Well Name | API | Spud Date | TD Reached Date | Completion Commencement Date | Initial Flow Back Date | First Production Date |
|--------------|-----|-----------|-----------------|------------------------------|------------------------|-----------------------|
| See Attached | | | | | | |
| | | | | | | |

VI. Separation Equipment: ☒ Attach a complete description of how Operator will size separation equipment to optimize gas capture.

VII. Operational Practices: ☒ Attach a complete description of the actions Operator will take to comply with the requirements of Subsection A through F of 19.15.27.8 NMAC.

VIII. Best Management Practices: ☒ Attach a complete description of Operator's best management practices to minimize venting during active and planned maintenance.

Section 2 – Enhanced Plan**EFFECTIVE APRIL 1, 2022**

Beginning April 1, 2022, an operator that is not in compliance with its statewide natural gas capture requirement for the applicable reporting area must complete this section.

☒ Operator certifies that it is not required to complete this section because Operator is in compliance with its statewide natural gas capture requirement for the applicable reporting area.

IX. Anticipated Natural Gas Production:

| Well | API | Anticipated Average Natural Gas Rate MCF/D | Anticipated Volume of Natural Gas for the First Year MCF |
|------|-----|--|--|
| | | | |
| | | | |

X. Natural Gas Gathering System (NGGS):

| Operator | System | ULSTR of Tie-in | Anticipated Gathering Start Date | Available Maximum Daily Capacity of System Segment Tie-in |
|----------|--------|-----------------|----------------------------------|---|
| | | | | |
| | | | | |

XI. Map. ☐ Attach an accurate and legible map depicting the location of the well(s), the anticipated pipeline route(s) connecting the production operations to the existing or planned interconnect of the natural gas gathering system(s), and the maximum daily capacity of the segment or portion of the natural gas gathering system(s) to which the well(s) will be connected.

XII. Line Capacity. The natural gas gathering system ☐ will ☐ will not have capacity to gather 100% of the anticipated natural gas production volume from the well prior to the date of first production.

XIII. Line Pressure. Operator ☐ does ☐ does not anticipate that its existing well(s) connected to the same segment, or portion, of the natural gas gathering system(s) described above will continue to meet anticipated increases in line pressure caused by the new well(s).

☐ Attach Operator's plan to manage production in response to the increased line pressure.

XIV. Confidentiality: ☐ Operator asserts confidentiality pursuant to Section 71-2-8 NMSA 1978 for the information provided in Section 2 as provided in Paragraph (2) of Subsection D of 19.15.27.9 NMAC, and attaches a full description of the specific information for which confidentiality is asserted and the basis for such assertion.

Section 3 - Certifications

Effective May 25, 2021

Operator certifies that, after reasonable inquiry and based on the available information at the time of submittal:

☒ Operator will be able to connect the well(s) to a natural gas gathering system in the general area with sufficient capacity to transport one hundred percent of the anticipated volume of natural gas produced from the well(s) commencing on the date of first production, taking into account the current and anticipated volumes of produced natural gas from other wells connected to the pipeline gathering system; or

☐ Operator will not be able to connect to a natural gas gathering system in the general area with sufficient capacity to transport one hundred percent of the anticipated volume of natural gas produced from the well(s) commencing on the date of first production, taking into account the current and anticipated volumes of produced natural gas from other wells connected to the pipeline gathering system.

If Operator checks this box, Operator will select one of the following:

Well Shut-In. ☐ Operator will shut-in and not produce the well until it submits the certification required by Paragraph (4) of Subsection D of 19.15.27.9 NMAC; or

Venting and Flaring Plan. ☐ Operator has attached a venting and flaring plan that evaluates and selects one or more of the potential alternative beneficial uses for the natural gas until a natural gas gathering system is available, including:

- (a) power generation on lease;
- (b) power generation for grid;
- (c) compression on lease;
- (d) liquids removal on lease;
- (e) reinjection for underground storage;
- (f) reinjection for temporary storage;
- (g) reinjection for enhanced oil recovery;
- (h) fuel cell production; and
- (i) other alternative beneficial uses approved by the division.

Section 4 - Notices

1. If, at any time after Operator submits this Natural Gas Management Plan and before the well is spud:

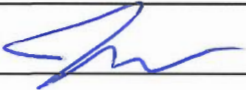
(a) Operator becomes aware that the natural gas gathering system it planned to connect the well(s) to has become unavailable or will not have capacity to transport one hundred percent of the production from the well(s), no later than 20 days after becoming aware of such information, Operator shall submit for OCD's approval a new or revised venting and flaring plan containing the information specified in Paragraph (5) of Subsection D of 19.15.27.9 NMAC; or

(b) Operator becomes aware that it has, cumulatively for the year, become out of compliance with its baseline natural gas capture rate or natural gas capture requirement, no later than 20 days after becoming aware of such information, Operator shall submit for OCD's approval a new or revised Natural Gas Management Plan for each well it plans to spud during the next 90 days containing the information specified in Paragraph (2) of Subsection D of 19.15.27.9 NMAC, and shall file an update for each Natural Gas Management Plan until Operator is back in compliance with its baseline natural gas capture rate or natural gas capture requirement.

2. OCD may deny or conditionally approve an APD if Operator does not make a certification, fails to submit an adequate venting and flaring plan which includes alternative beneficial uses for the anticipated volume of natural gas produced, or if OCD determines that Operator will not have adequate natural gas takeaway capacity at the time a well will be spud.

I certify that, after reasonable inquiry, the statements in and attached to this Natural Gas Management Plan are true and correct to the best of my knowledge and acknowledge that a false statement may be subject to civil and criminal penalties under the Oil and Gas Act.

Signature:



Printed Name: Jeff Walla

Title: Surface Land and Regulatory Manager

E-mail Address:

Date:

Phone:

OIL CONSERVATION DIVISION
(Only applicable when submitted as a standalone form)

Approved By:

Title:

Approval Date:

Conditions of Approval:

| Well Name | API | ULSTR | N/S Footage | Call | E/W Footage | Call | Anticipated Oil BBL/D | Anticipated Gas MCF/D | Anticipated Produced Water BBL/D |
|------------------------------|-----|------------|----------------|------|----------------|------|--------------------------|--------------------------|--|
| Galapagos 14-26 Fed Com 626H | | 14-23S-31E | 300 | FNL | 1880 | FWL | (+/-) 1981 BOPD | (+/-) 5413 MCFD | (+/-) 5339 BWPD |
| | | | | | | | | | |

| Well Name | API | Spud Date* | TD Reached Date* | Completion Commencement Date* | Initial Flow Back Date* | First Production Date* |
|------------------------------|-----|------------|---------------------|-------------------------------------|----------------------------|------------------------------|
| Galapagos 14-26 Fed Com 626H | | 8/15/2025 | 9/14/2025 | 1/12/2026 | 1/12/2026 | 1/12/2026 |
| | | | | | | |

*Approximate Dates Subject to Change



VI. Separation Equipment

Devon Energy Production Company, L.P. utilizes a "stage separation" process in which oil and gas separation is carried out through a series of separators operating at successively reduced pressures. Hydrocarbon liquids are produced into a high-pressure inlet separator, then carried through one or more lower pressure separation vessels before entering the storage tanks. The purpose of this separation process is to attain maximum recovery of liquid hydrocarbons from the fluids and allow maximum capture of produced gas into the sales pipeline. Devon utilizes a series of Low-Pressure Compression units to capture gas off the staged separation and send it to the sales pipeline. This process minimizes the amount of flash gas that enters the end-stage storage tanks that is subsequently vented or flared.



VII. Operational Practices

Devon Energy Production Company, L. P. will employ best management practices and control technologies to maximize the recovery and minimize waste of natural gas through venting and flaring.

- During drilling operations, Devon will utilize flares and/or combustors to capture and control natural gas, where technically feasible. If flaring is deemed technically in-feasible, Devon will employ best management practices to minimize or reduce venting to the extent possible.
- During completions operations, Devon will utilize Green Completion methods to capture gas produced during well completions that is otherwise vented or flared. If capture is technically in-feasible, flares and/or combustors will be used to capture and control flow back fluids entering into frac tanks during initial flowback. Upon indication of first measurable hydrocarbon volumes, Devon will turn operations to onsite separation vessels and flow to the gathering pipeline.
- During production operations, Devon will take every practical effort to minimize waste of natural gas through venting and flaring by:
 - Designing and constructing facilities in a manner consistent to achieve maximum capture and control of hydrocarbon liquids & produced gas
 - Utilizing a closed-loop capture system to collect and route produced gas to sales line via low pressure compression, or to a flare/combustor
 - Flaring in lieu of venting, where technically feasible
 - Utilizing auto-ignitors or continuous pilots, with thermocouples connected to Scada, to quickly detect and resolve issues related to malfunctioning flares/combustors
 - Employ the use of automatic tank gauging to minimize storage tank venting during loading events
 - Installing air-driven or electric-driven pneumatics & combustion engines, where technically feasible to minimize venting to the atmosphere
 - Confirm equipment is properly maintained and repaired through a preventative maintenance and repair program to ensure equipment meets all manufacturer specifications
 - Conduct and document AVO inspections on the frequency set forth in Part 27 to detect and repair any onsite leaks as quickly and efficiently as is feasible



VIII. Best Management Practices during Maintenance

Devon Energy Production Company, L.P. will utilize best management practices to minimize venting during active and planned maintenance activities. Devon is operating under guidance that production facilities permitted under NOI permits have no provisions to allow high pressure flaring and high pressure flaring is only allowed in disruption scenarios so long as the duration is less than eight hours. When technically feasible, flaring during maintenance activities will be utilized in lieu of venting to the atmosphere. Devon will work with third-party operators during scheduled maintenance of downstream pipeline or processing plants to address those events ahead of time to minimize venting. Actions considered include identifying alternative capture approaches or planning to temporarily reduce production or shut in the well to address these circumstances.

Galapagos 14-26 Fed Com 626H

1. Geologic Formations

| | | | |
|---------------|-------|------------------------------|-----|
| TVD of target | 11710 | Pilot hole depth | N/A |
| MD at TD: | 27276 | Deepest expected fresh water | |

Basin

| Formation | Depth (TVD) from KB | Water/Mineral Bearing/Target Zone? | Hazards* |
|----------------------|---------------------------|--|----------|
| Rustler | 807 | | |
| Salt | 1147 | | |
| Base of Salt | 4154 | | |
| Delaware | 4424 | | |
| Cherry Canyon | 5360 | | |
| Brushy Canyon | 6599 | | |
| 1st Bone Spring Lime | 8275 | | |
| Bone Spring 1st | 9365 | | |
| Bone Spring 2nd | 9409 | | |
| 3rd Bone Spring Lime | 10450 | | |
| Bone Spring 3rd | 11170 | | |
| Wolfcamp | 11610 | | |
| | | | |
| | | | |
| | | | |
| | | | |
| | | | |
| | | | |

*H2S, water flows, loss of circulation, abnormal pressures, etc.

Galapagos 14-26 Fed Com 626H

2. Casing Program (Primary Design)

| Hole Size | Csg. Size | Wt (PPF) | Grade | Conn | Top (MD) | Bottom (MD) | Top (TVD) | Bottom (TVD) |
|-----------|-----------|----------|-------|---------|----------|-------------|-----------|--------------|
| 17 1/2 | 13 3/8 | 48.0 | H40 | STC | 0.0 | 832 MD | 0 | 832 TVD |
| 12 1/4 | 10 3/4 | 45.5 | HCL80 | BTC SCC | 0.0 | 4179 MD | 0 | 4179 TVD |
| 9 7/8 | 8 5/8 | 8.6 | P110 | TLW | 0 | 11195 MD | 0 | 11195 TVD |
| 7 7/8 | 5 1/2 | 17.0 | P110 | BTC | 0 | 27276 MD | 0 | 11710 TVD |

- All casing strings will be tested in accordance with Onshore Oil and Gas Order #2 IILB.1.h Must have table for contingency casing.
- The Rustler top will be validated via drilling parameters (i.e. reduction in ROP), and the surface casing setting depth will be revised accordingly. In addition, surface casing will be set a minimum of 25' above the top of the salt.

Galapagos 14-26 Fed Com 626H

3. Cementing Program (Primary Design)

| Casing | # Sks | TOC | Wt. (lb/gal) | Yld (ft ³ /sack) | Slurry Description |
|----------------------------------|--------------|---------------------|-----------------|--------------------------------|--|
| Surface | 641 | Surf | 13.2 | 1.44 | Lead: Class C Cement + additives |
| Int | 277 | Surf | 9 | 3.27 | Lead: Class C Cement + additives |
| | 101 | 500' above shoe | 13.2 | 1.44 | Tail: Class H / C + additives |
| Int 1 | 302 | Surf | 9 | 3.27 | Lead: Class C Cement + additives |
| | 465 | 4000' above shoe | 13.2 | 1.44 | Tail: Class H / C + additives |
| Int 1 Intermediate Squeeze | As Needed | Surf | 9 | 1.44 | Squeeze Lead: Class C Cement + additives |
| | 277 | Surf | 9 | 3.27 | Lead: Class C Cement + additives |
| | 101 | 4000' above shoe | 13.2 | 1.44 | Tail: Class H / C + additives |
| Production | 651 | 0 | 9 | 3.27 | Lead: Class H / C + additives |
| | 2132 | 11170 | 13.2 | 1.44 | Tail: Class H / C + additives |

If a DV tool is ran the depth(s) will be adjusted based on hole conditions and cement volumes will be adjusted proportionally. Slurry weights will be adjusted based on estimated fracture gradient of the formation. DV tool will be set a minimum of 50 feet below previous casing and a minimum of 200 feet above current shoe. If cement is not returned to surface during the primary cement job on the surface casing string, a planned top job will be conducted immediately after completion of the primary job.

| Casing String | % Excess |
|---------------------------------|----------|
| Surface | 50% |
| Intermediate and Intermediate 1 | 30% |
| Intermediate 1 (Two Stage) | 25% |
| Prod | 10% |

Galapagos 14-26 Fed Com 626H

4. Pressure Control Equipment (Four String Design)

| BOP installed and tested before drilling which hole? | | Size? | Min. Required WP | Type | ✓ | Tested to: |
|--|--|-------|------------------|------|---|--------------------------------|
| Int | 13-5/8" | 5M | Annular | | X | 50% of rated working pressure |
| | | | Blind Ram | | X | 5M |
| | | | Pipe Ram | | | |
| | | | Double Ram | | X | |
| | | | Other* | | | |
| Int 1 | 13-5/8" | 5M | Annular (5M) | | X | 100% of rated working pressure |
| | | | Blind Ram | | X | 5M |
| | | | Pipe Ram | | | |
| | | | Double Ram | | X | |
| | | | Other* | | | |
| Production | 13-5/8" | 5M | Annular (5M) | | X | 100% of rated working pressure |
| | | | Blind Ram | | X | 5M |
| | | | Pipe Ram | | | |
| | | | Double Ram | | X | |
| | | | Other* | | | |
| N | A variance is requested for the use of a diverter on the surface casing. See attached for schematic. | | | | | |
| N | A variance is requested to run a 5 M annular on a 10M system | | | | | |

Galapagos 14-26 Fed Com 626H

5. Mud Program (Four String Design)

| Section | Type | Weight (ppg) |
|----------------|-----------------|--------------|
| Surface | WBM | 8.5-9 |
| Intermediate | DBE / Cut Brine | 10-10.5 |
| Intermediate 1 | WBM | 8.5-9 |
| Production | OBM | 10-10.5 |

Sufficient mud materials to maintain mud properties and meet minimum lost circulation and weight increase requirements will be kept on location at all times.

| | |
|---|-----------------------------|
| What will be used to monitor the loss or gain of fluid? | PVT/Pason/Visual Monitoring |
|---|-----------------------------|

6. Logging and Testing Procedures

| Logging, Coring and Testing | |
|-----------------------------|---|
| X | Will run GR/CNL from TD to surface (horizontal well - vertical portion of hole). Stated logs run will be in the Completion Report and submitted to the BLM. |
| | No logs are planned based on well control or offset log information. |
| | Drill stem test? If yes, explain. |
| | Coring? If yes, explain. |

| Additional logs planned | | Interval |
|-------------------------|-------------|-------------------------|
| | Resistivity | Int. shoe to KOP |
| | Density | Int. shoe to KOP |
| X | CBL | Production casing |
| X | Mud log | Intermediate shoe to TD |
| | PEX | |

7. Drilling Conditions

| Condition | Specify what type and where? |
|----------------------------|------------------------------|
| BH pressure at deepest TVD | 6394 |
| Abnormal temperature | No |

Mitigation measure for abnormal conditions. Describe. Lost circulation material/sweeps/mud scavengers.

Hydrogen Sulfide (H₂S) monitors will be installed prior to drilling out the surface shoe. If H₂S is detected in concentrations greater than 100 ppm, the operator will comply with the provisions of Onshore Oil and Gas Order #6. If Hydrogen Sulfide is encountered measured values and formations will be provided to the BLM.

| | |
|---|---------------------------------|
| N | H ₂ S is present |
| Y | H ₂ S plan attached. |

Galapagos 14-26 Fed Com 626H

8. Other facets of operation

Is this a walking operation? Potentially

- 1 If operator elects, drilling rig will batch drill the surface holes and run/cement surface casing; walking the rig to next wells on the pad.
- 2 The drilling rig will then batch drill the intermediate sections and run/cement intermediate casing; the wellbore will be isolated with a blind flange and pressure gauge installed for monitoring the well before walking to the next well.
- 3 The drilling rig will then batch drill the production hole sections on the wells with OBM, run/cement production casing, and install TA caps or tubing heads for completions.

NOTE: During batch operations the drilling rig will be moved from well to well however, it will not be removed from the pad until all wells have production casing run/cemented.

Will be pre-setting casing? Potentially

- 1 Spudder rig will move in and batch drill surface hole.
 - a. Rig will utilize fresh water based mud to drill surface hole to TD. Solids control will be handled entirely on a closed loop basis.,
- 2 After drilling the surface hole section, the spudder rig will run casing and cement following all of the applicable rules and regulations (OnShore Order 2, all COAs and NMOCD regulations).
- 3 The wellhead will be installed and tested once the surface casing is cut off and the WOC time has been reached.
- 4 A blind flange with the same pressure rating as the wellhead will be installed to seal the wellbore. Pressure will be monitored with a pressure gauge installed on the wellhead.
- 5 Spudder rig operations is expected to take 4-5 days per well on a multi-well pad.
- 6 The NMOCD will be contacted and notified 24 hours prior to commencing spudder rig operations.
- 7 Drilling operations will be performed with drilling rig. At that time an approved BOP stack will be nipped up and tested on the wellhead before drilling operations commences on each well.
 - a. The NMOCD will be contacted / notified 24 hours before the drilling rig moves back on to the pad with the pre-set surface casing.

Attachments

X Directional Plan
 Other, describe



U.S. Department of the Interior
BUREAU OF LAND MANAGEMENT

Drilling Plan Data Report

05/17/2022

APD ID: 10400070316

Submission Date: 03/04/2021

Highlighted data
reflects the most
recent changes

Operator Name: DEVON ENERGY PRODUCTION COMPANY LP

Well Name: GALAPAGOS 14-26 FED COM

Well Number: 626H

Well Type: OIL WELL

Well Work Type: Drill

[Show Final Text](#)

Section 1 - Geologic Formations

| Formation ID | Formation Name | Elevation | True Vertical | Measured Depth | Lithologies | Mineral Resources | Producing Formatio |
|--------------|------------------|-----------|---------------|----------------|-----------------|-------------------|--------------------|
| 1636147 | UNKNOWN | 3431 | 0 | 0 | OTHER : SURFACE | NONE | N |
| 1636148 | RUSTLER | 2624 | 807 | 807 | SANDSTONE | NONE | N |
| 1636149 | SALADO | 2284 | 1147 | 1147 | SALT | NONE | N |
| 1636150 | BASE OF SALT | -723 | 4154 | 4154 | ANHYDRITE | NATURAL GAS, OIL | N |
| 1636151 | BELL CANYON | -993 | 4424 | 4424 | SANDSTONE | NATURAL GAS, OIL | N |
| 1636152 | CHERRY CANYON | -1929 | 5360 | 5360 | SANDSTONE | NATURAL GAS, OIL | N |
| 1636153 | BRUSHY CANYON | -3168 | 6599 | 6599 | SANDSTONE | NATURAL GAS, OIL | N |
| 1636160 | BONE SPRING LIME | -4844 | 8275 | 8275 | LIMESTONE | NATURAL GAS, OIL | N |
| 1636154 | BONE SPRING | -5934 | 9365 | 9365 | SANDSTONE | NATURAL GAS, OIL | N |
| 1636156 | BONE SPRING 2ND | -5978 | 9409 | 9409 | SANDSTONE | NATURAL GAS, OIL | N |
| 1636161 | BONE SPRING LIME | -7019 | 10450 | 10450 | LIMESTONE | NATURAL GAS, OIL | N |
| 1636163 | BONE SPRING 3RD | -7739 | 11170 | 11170 | SANDSTONE | NATURAL GAS, OIL | N |
| 1636158 | WOLFCAMP | -8179 | 11610 | 11610 | SHALE | NATURAL GAS, OIL | Y |
| 1636159 | STRAWN | -9909 | 13340 | 13340 | LIMESTONE | NATURAL GAS, OIL | N |

Section 2 - Blowout Prevention



Commitment Runs Deep



Design Plan
Operation and Maintenance Plan
Closure Plan

SENM - Closed Loop Systems
June 2010

I. Design Plan

Devon uses MI SWACO closed loop system (CLS). The MI SWACO CLS is designed to maintain drill solids at or below 5%. The equipment is arranged to progressively remove solids from the largest to the smallest size. Drilling fluids can thus be reused and savings is realized on mud and disposal costs. Dewatering may be required with the centrifuges to insure removal of ultra fine solids.

The drilling location is constructed to allow storm water to flow to a central sump normally the cellar. This insures no contamination leaves the drilling pad in the event of a spill. Storm water is reused in the mud system or stored in a reserve fluid tank farm until it can be reused. All lubricants, oils, or chemicals are removed immediately from the ground to prevent the contamination of storm water. An oil trap is normally installed on the sump if an oil spill occurs during a storm.

A tank farm is utilized to store drilling fluids including fresh water and brine fluids. The tank farm is constructed on a 20 ml plastic lined, bermed pad to prevent the contamination of the drilling site during a spill. Fluids from other sites may be stored in these tanks for processing by the solids control equipment and reused in the mud system. At the end of the well the fluids are transported from the tank farm to an adjoining well or to the next well for the rig.

Prior to installing a closed-loop system on site, the topsoil, if present, will be stripped and stockpiled for use as the final cover or fill at the time of closure.

Signs will be posted on the fence surrounding the closed-loop system unless the closed-loop system is located on a site where there is an existing well, that is operated by Devon.

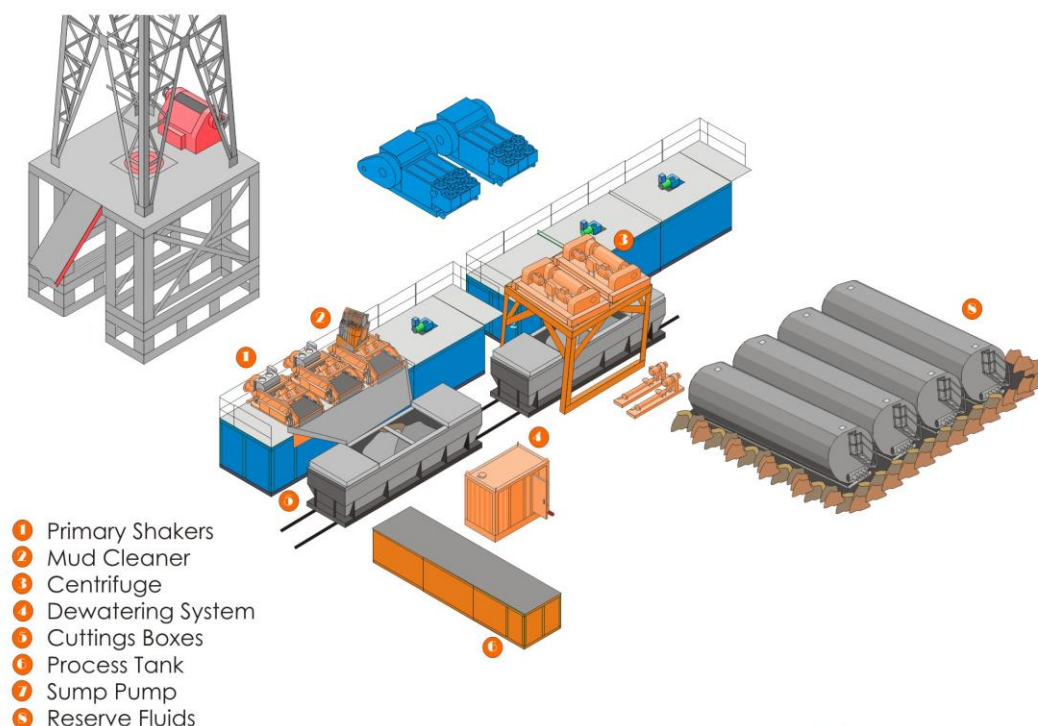
II. Operations and Maintenance Plan

Primary Shakers: The primary shakers make the first removal of drill solids from the drilling mud as it leaves the well bore. The shakers are sized to handle maximum drilling rate at optimal screen size. The shakers normally remove solids down to 74 microns.

Mud Cleaner: The Mud Cleaner cleans the fluid after it leaves the shakers. A set of hydrocyclones are sized to handle 1.25 to 1.5 times the maximum circulating rate. This ensures all the fluid is being processed to an average cut point of 25 microns. The wet discharged is dewatered on a shaker equipped with ultra fine mesh screens and generally cut at 40 microns.



Closed Loop Schematic



MI SWACO

Centrifuges: The centrifuges can be one or two in number depending on the well geometry or depth of well. The centrifuges are sized to maintain low gravity solids at 5% or below. They may or may not need a dewatering system to enhance the removal rates. The centrifuges can make a cut point of 8-10 microns depending on bowl speed, feed rate, solids loading and other factors.

The centrifuge system is designed to work on the active system and be flexible to process incoming fluids from other locations. This set-up is also dependant on well factors.

Dewatering System: The dewatering system is a chemical mixing and dosing system designed to enhance the solids removal of the centrifuge. Not commonly used in shallow wells. It may contain pH adjustment, coagulant mixing and dosing, and polymer mixing and dosing. Chemical flocculation binds ultra fine solids into a mass that is within the centrifuge operating design. The

dewatering system improves the centrifuge cut point to infinity or allows for the return of clear water or brine fluid. This ability allows for the ultimate control of low gravity solids.

Cuttings Boxes: Cuttings boxes are utilized to capture drill solids that are discarded from the solids control equipment. These boxes are set upon a rail system that allows for the removal and replacement of a full box of cuttings with an empty one. They are equipped with a cover that insures no product is spilled into the environment during the transportation phase.

Process Tank: (Optional) The process tank allows for the holding and process of fluids that are being transferred into the mud system. Additionally, during times of lost circulation the process tank may hold active fluids that are removed for additional treatment. It can further be used as a mixing tank during well control conditions.

Sump and Sump Pump: The sump is used to collect storm water and the pump is used to transfer this fluid to the active system or to the tank for to hold in reserve. It can also be used to collect fluids that may escape during spills. The location contains drainage ditches that allow the location fluids to drain to the sump.

Reserve Fluids (Tank Farm): A series of frac tanks are used to replace the reserve pit. These are steel tanks that are equipped with a manifold system and a transfer pump. These tanks can contain any number of fluids used during the drilling process. These can include fresh water, cut brine, and saturated salt fluid. The fluid can be from the active well or reclaimed fluid from other locations. A 20 ml liner and berm system is employed to ensure the fluids do not migrate to the environment during a spill.

If a leak develops, the appropriate division district office will be notified within 48 hours of the discovery and the leak will be addressed. Spill prevention is accomplished by maintaining pump packing, hoses, and pipe fittings to insure no leaks are occurring. During an upset condition the source of the spill is isolated and repaired as soon as it is discovered. Free liquid is removed by a diaphragm pump and returned to the mud system. Loose topsoil may be used to stabilize the spill and the contaminated soil is excavated and placed in the cuttings boxes. After the well is finished and the rig has moved, the entire location is scrapped and testing will be performed to determine if a release has occurred.

All trash is kept in a wire mesh enclosure and removed to an approved landfill when full. All spent motor oils are kept in separate containers and they are removed and sent to an approved recycling center. Any spilled lubricants, pipe

dope, or regulated chemicals are removed from soil and sent to landfills approved for these products.

These operations are monitored by Mi Swaco service technicians. Daily logs are maintained to ensure optimal equipment operation and maintenance. Screen and chemical use is logged to maintain inventory control. Fluid properties are monitored and recorded and drilling mud volumes are accounted for in the mud storage farm. This data is kept for end of well review to insure performance goals are met. Lessons learned are logged and used to help with continuous improvement.

A MI SWACO field supervisor manages from 3-5 wells. They are responsible for training personnel, supervising installations, and inspecting sites for compliance of MI SWACO safety and operational policy.

III. Closure Plan

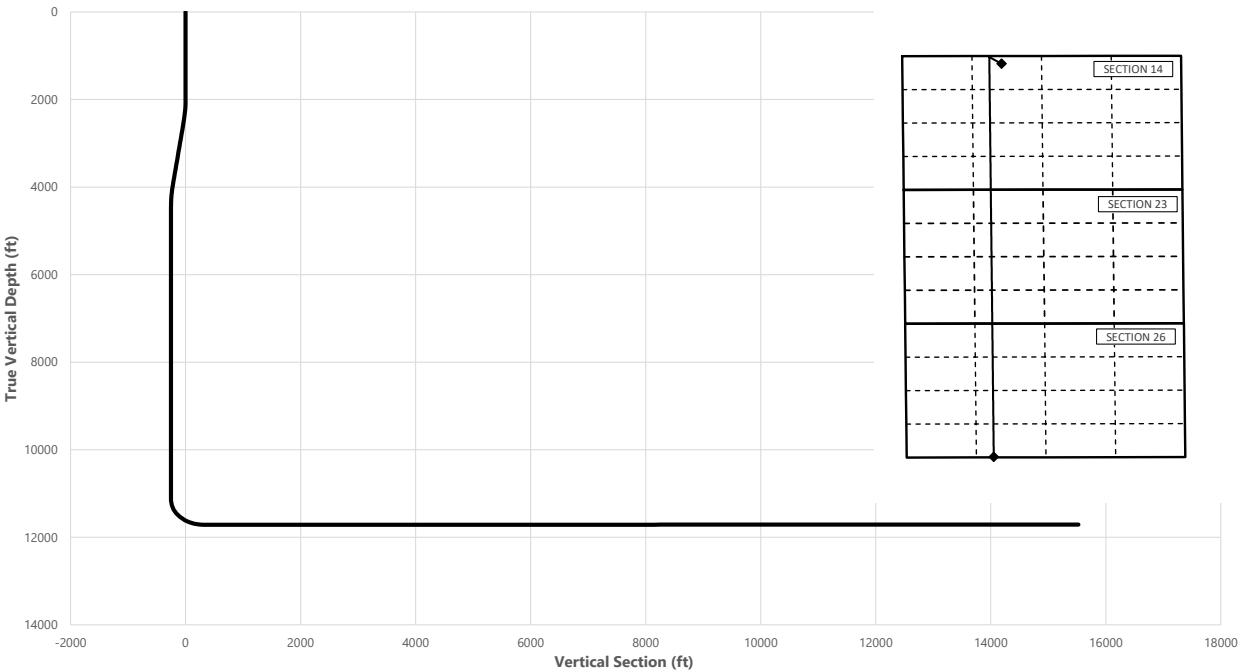
A maximum 340' X 340' caliche pad is built per well. All of the trucks and steel tanks fit on this pad. All fluid cuttings go to the steel tanks to be hauled by various trucking companies to an agency approved disposal.



Well: Galapagos 14-26 Fed Com 626H
County: Eddy
Wellbore: Permit Plan
Design: Permit Plan #1

Geodetic System: US State Plane 1983
Datum: North American Datum 1927
Ellipsoid: Clarke 1866
Zone: 3001 - NM East (NAD83)

| MD (ft) | INC (°) | AZI (°) | TVD (ft) | NS (ft) | EW (ft) | VS (ft) | DLS (°/100ft) | Comment |
|------------|------------|------------|-------------|------------|------------|------------|------------------|------------------|
| 0.00 | 0.00 | 0.00 | 0.00 | 0.00 | 0.00 | 0.00 | 0.00 | SHL |
| 2000.00 | 0.00 | 318.00 | 2000.00 | 0.00 | 0.00 | 0.00 | 0.00 | Start Tangent |
| 2500.00 | 10.00 | 318.00 | 2497.47 | 32.34 | -29.12 | -32.07 | 1.00 | Hold Tangent |
| 3985.91 | 10.00 | 318.00 | 3960.80 | 224.09 | -201.78 | -222.18 | 0.00 | Drop to Vertical |
| 4485.91 | 0.00 | 318.00 | 4458.27 | 256.44 | -230.90 | -254.25 | 2.00 | Hold Vertical |
| 11169.69 | 0.00 | 179.69 | 11142.04 | 256.44 | -230.90 | -254.25 | 0.00 | KOP |
| 12069.87 | 90.02 | 179.69 | 11715.00 | -316.70 | -227.83 | 318.84 | 10.00 | Landing Point |
| 27276.31 | 90.02 | 179.69 | 11710.00 | -15522.91 | -146.35 | 15523.60 | 0.00 | BHL |



| Key Depths | MD (ft) | TVD (ft) |
|---------------------------------|------------|-------------|
| Rustler | 0.00 | 0.00 |
| Salt | 1147.00 | 1147.00 |
| Base of Salt | 4181.07 | 4154.00 |
| Delaware | 4451.64 | 4424.00 |
| Cherry Canyon | 5387.64 | 5360.00 |
| Brushy Canyon | 6626.64 | 6599.00 |
| 1st Bone Spring Lime | 8302.64 | 8275.00 |
| Bone Spring 1st | 9392.64 | 9365.00 |
| Bone Spring 2nd | 9436.64 | 9409.00 |
| 3rd Bone Spring Lime | 10477.64 | 10450.00 |
| Bone Spring 3rd | 11197.65 | 11170.00 |
| Wolfcamp / Point of Penetration | 11717.28 | 11610.00 |
| Exit | 27196.31 | 11710.05 |

SHL
KOP
Point of Penetration
Exit
BHL

| MD (ft) | TVD (ft) | Lat (°) | Long (°) | Section Footages |
|------------|-------------|------------|-------------|---|
| 0.00 | 0.00 | 32.3108 | -103.7511 | 300' FNL, 1880' FWL of Sec 14 in T23S, R31E |
| 11169.69 | 11142.04 | 32.3115 | -103.7519 | 43' FNL, 1650' FWL of Sec 14 in T23S, R31E |
| 11717.28 | 11610.00 | 32.3115 | -103.7518 | 100' FNL, 1650' FWL of Sec 14 in T23S, R31E |
| 27196.31 | 11710.05 | 32.2685 | -103.7518 | 100' FSL, 1650' FWL of Sec 26 in T23S, R31E |
| 27276.31 | 11710.00 | 32.2681 | -103.7519 | 20' FSL, 1650' FWL of Sec 26 in T23S, R31E |

Galapagos 14-26 Fed Com 626H



Well: Galapagos 14-26 Fed Com 626H
County: Eddy
Wellbore: Permit Plan
Design: Permit Plan #1

Geodetic System: US State Plane 1983
Datum: North American Datum 1927
Ellipsoid: Clarke 1866
Zone: 3001 - NM East (NAD83)

| MD (ft) | INC (°) | AZI (°) | TVD (ft) | NS (ft) | EW (ft) | VS (ft) | DLS (°/100ft) | Comment |
|------------|------------|------------|-------------|------------|------------|------------|------------------|------------------|
| 0.00 | 0.00 | 0.00 | 0.00 | 0.00 | 0.00 | 0.00 | 0.00 | SHL |
| 100.00 | 0.00 | 318.00 | 100.00 | 0.00 | 0.00 | 0.00 | 0.00 | |
| 200.00 | 0.00 | 318.00 | 200.00 | 0.00 | 0.00 | 0.00 | 0.00 | |
| 300.00 | 0.00 | 318.00 | 300.00 | 0.00 | 0.00 | 0.00 | 0.00 | |
| 400.00 | 0.00 | 318.00 | 400.00 | 0.00 | 0.00 | 0.00 | 0.00 | |
| 500.00 | 0.00 | 318.00 | 500.00 | 0.00 | 0.00 | 0.00 | 0.00 | |
| 600.00 | 0.00 | 318.00 | 600.00 | 0.00 | 0.00 | 0.00 | 0.00 | |
| 700.00 | 0.00 | 318.00 | 700.00 | 0.00 | 0.00 | 0.00 | 0.00 | |
| 800.00 | 0.00 | 318.00 | 800.00 | 0.00 | 0.00 | 0.00 | 0.00 | |
| 807.00 | 0.00 | 318.00 | 807.00 | 0.00 | 0.00 | 0.00 | 0.00 | Rustler |
| 900.00 | 0.00 | 318.00 | 900.00 | 0.00 | 0.00 | 0.00 | 0.00 | |
| 1000.00 | 0.00 | 318.00 | 1000.00 | 0.00 | 0.00 | 0.00 | 0.00 | |
| 1100.00 | 0.00 | 318.00 | 1100.00 | 0.00 | 0.00 | 0.00 | 0.00 | |
| 1147.00 | 0.00 | 318.00 | 1147.00 | 0.00 | 0.00 | 0.00 | 0.00 | Salt |
| 1200.00 | 0.00 | 318.00 | 1200.00 | 0.00 | 0.00 | 0.00 | 0.00 | |
| 1300.00 | 0.00 | 318.00 | 1300.00 | 0.00 | 0.00 | 0.00 | 0.00 | |
| 1400.00 | 0.00 | 318.00 | 1400.00 | 0.00 | 0.00 | 0.00 | 0.00 | |
| 1500.00 | 0.00 | 318.00 | 1500.00 | 0.00 | 0.00 | 0.00 | 0.00 | |
| 1600.00 | 0.00 | 318.00 | 1600.00 | 0.00 | 0.00 | 0.00 | 0.00 | |
| 1700.00 | 0.00 | 318.00 | 1700.00 | 0.00 | 0.00 | 0.00 | 0.00 | |
| 1800.00 | 0.00 | 318.00 | 1800.00 | 0.00 | 0.00 | 0.00 | 0.00 | |
| 1900.00 | 0.00 | 318.00 | 1900.00 | 0.00 | 0.00 | 0.00 | 0.00 | |
| 2000.00 | 0.00 | 318.00 | 2000.00 | 0.00 | 0.00 | 0.00 | 0.00 | Start Tangent |
| 2100.00 | 2.00 | 318.00 | 2099.98 | 1.30 | -1.17 | -1.29 | 2.00 | |
| 2200.00 | 4.00 | 318.00 | 2199.84 | 5.19 | -4.67 | -5.14 | 2.00 | |
| 2300.00 | 6.00 | 318.00 | 2299.45 | 11.66 | -10.50 | -11.56 | 2.00 | |
| 2400.00 | 8.00 | 318.00 | 2398.70 | 20.72 | -18.66 | -20.54 | 2.00 | |
| 2500.00 | 10.00 | 318.00 | 2497.47 | 32.34 | -29.12 | -32.07 | 1.00 | Hold Tangent |
| 2600.00 | 10.00 | 318.00 | 2595.95 | 45.25 | -40.74 | -44.86 | 0.00 | |
| 2700.00 | 10.00 | 318.00 | 2694.43 | 58.15 | -52.36 | -57.66 | 0.00 | |
| 2800.00 | 10.00 | 318.00 | 2792.91 | 71.06 | -63.98 | -70.45 | 0.00 | |
| 2900.00 | 10.00 | 318.00 | 2891.39 | 83.96 | -75.60 | -83.25 | 0.00 | |
| 3000.00 | 10.00 | 318.00 | 2989.87 | 96.87 | -87.22 | -96.04 | 0.00 | |
| 3100.00 | 10.00 | 318.00 | 3088.35 | 109.77 | -98.84 | -108.83 | 0.00 | |
| 3200.00 | 10.00 | 318.00 | 3186.83 | 122.68 | -110.46 | -121.63 | 0.00 | |
| 3300.00 | 10.00 | 318.00 | 3285.31 | 135.58 | -122.08 | -134.42 | 0.00 | |
| 3400.00 | 10.00 | 318.00 | 3383.79 | 148.48 | -133.70 | -147.22 | 0.00 | |
| 3500.00 | 10.00 | 318.00 | 3482.27 | 161.39 | -145.32 | -160.01 | 0.00 | |
| 3600.00 | 10.00 | 318.00 | 3580.75 | 174.29 | -156.94 | -172.81 | 0.00 | |
| 3700.00 | 10.00 | 318.00 | 3679.23 | 187.20 | -168.55 | -185.60 | 0.00 | |
| 3800.00 | 10.00 | 318.00 | 3777.72 | 200.10 | -180.17 | -198.39 | 0.00 | |
| 3900.00 | 10.00 | 318.00 | 3876.20 | 213.01 | -191.79 | -211.19 | 0.00 | |
| 3985.91 | 10.00 | 318.00 | 3960.80 | 224.09 | -201.78 | -222.18 | 0.00 | Drop to Vertical |
| 4000.00 | 9.72 | 318.00 | 3974.68 | 225.89 | -203.39 | -223.96 | 2.00 | |
| 4100.00 | 7.72 | 318.00 | 4073.52 | 237.15 | -213.53 | -235.13 | 2.00 | |
| 4181.07 | 6.10 | 318.00 | 4154.00 | 244.40 | -220.06 | -242.31 | 2.00 | Base of Salt |
| 4200.00 | 5.72 | 318.00 | 4172.83 | 245.84 | -221.36 | -243.75 | 2.00 | |
| 4300.00 | 3.72 | 318.00 | 4272.49 | 251.96 | -226.86 | -249.81 | 2.00 | |
| 4400.00 | 1.72 | 318.00 | 4372.37 | 255.48 | -230.04 | -253.30 | 2.00 | |
| 4451.64 | 0.69 | 318.00 | 4424.00 | 256.29 | -230.76 | -254.10 | 2.00 | Delaware |
| 4485.91 | 0.00 | 318.00 | 4458.27 | 256.44 | -230.90 | -254.25 | 2.00 | Hold Vertical |
| 4500.00 | 0.00 | 179.69 | 4472.36 | 256.44 | -230.90 | -254.25 | 0.00 | |
| 4600.00 | 0.00 | 179.69 | 4572.36 | 256.44 | -230.90 | -254.25 | 0.00 | |
| 4700.00 | 0.00 | 179.69 | 4672.36 | 256.44 | -230.90 | -254.25 | 0.00 | |
| 4800.00 | 0.00 | 179.69 | 4772.36 | 256.44 | -230.90 | -254.25 | 0.00 | |
| 4900.00 | 0.00 | 179.69 | 4872.36 | 256.44 | -230.90 | -254.25 | 0.00 | |
| 5000.00 | 0.00 | 179.69 | 4972.36 | 256.44 | -230.90 | -254.25 | 0.00 | |
| 5100.00 | 0.00 | 179.69 | 5072.36 | 256.44 | -230.90 | -254.25 | 0.00 | |
| 5200.00 | 0.00 | 179.69 | 5172.36 | 256.44 | -230.90 | -254.25 | 0.00 | |
| 5300.00 | 0.00 | 179.69 | 5272.36 | 256.44 | -230.90 | -254.25 | 0.00 | |
| 5387.64 | 0.00 | 179.69 | 5360.00 | 256.44 | -230.90 | -254.25 | 0.00 | Cherry Canyon |
| 5400.00 | 0.00 | 179.69 | 5372.36 | 256.44 | -230.90 | -254.25 | 0.00 | |
| 5500.00 | 0.00 | 179.69 | 5472.36 | 256.44 | -230.90 | -254.25 | 0.00 | |
| 5600.00 | 0.00 | 179.69 | 5572.36 | 256.44 | -230.90 | -254.25 | 0.00 | |
| 5700.00 | 0.00 | 179.69 | 5672.36 | 256.44 | -230.90 | -254.25 | 0.00 | |
| 5800.00 | 0.00 | 179.69 | 5772.36 | 256.44 | -230.90 | -254.25 | 0.00 | |
| 5900.00 | 0.00 | 179.69 | 5872.36 | 256.44 | -230.90 | -254.25 | 0.00 | |
| 6000.00 | 0.00 | 179.69 | 5972.36 | 256.44 | -230.90 | -254.25 | 0.00 | |
| 6100.00 | 0.00 | 179.69 | 6072.36 | 256.44 | -230.90 | -254.25 | 0.00 | |
| 6200.00 | 0.00 | 179.69 | 6172.36 | 256.44 | -230.90 | -254.25 | 0.00 | |

Galapagos 14-26 Fed Com 626H



Well: Galapagos 14-26 Fed Com 626H
County: Eddy
Wellbore: Permit Plan
Design: Permit Plan #1

Geodetic System: US State Plane 1983
Datum: North American Datum 1927
Ellipsoid: Clarke 1866
Zone: 3001 - NM East (NAD83)

| MD (ft) | INC (°) | AZI (°) | TVD (ft) | NS (ft) | EW (ft) | VS (ft) | DLS (°/100ft) | Comment |
|------------|------------|------------|-------------|------------|------------|------------|------------------|---------------------------------|
| 6300.00 | 0.00 | 179.69 | 6272.36 | 256.44 | -230.90 | -254.25 | 0.00 | |
| 6400.00 | 0.00 | 179.69 | 6372.36 | 256.44 | -230.90 | -254.25 | 0.00 | |
| 6500.00 | 0.00 | 179.69 | 6472.36 | 256.44 | -230.90 | -254.25 | 0.00 | |
| 6600.00 | 0.00 | 179.69 | 6572.36 | 256.44 | -230.90 | -254.25 | 0.00 | |
| 6626.64 | 0.00 | 179.69 | 6599.00 | 256.44 | -230.90 | -254.25 | 0.00 | Brushy Canyon |
| 6700.00 | 0.00 | 179.69 | 6672.36 | 256.44 | -230.90 | -254.25 | 0.00 | |
| 6800.00 | 0.00 | 179.69 | 6772.36 | 256.44 | -230.90 | -254.25 | 0.00 | |
| 6900.00 | 0.00 | 179.69 | 6872.36 | 256.44 | -230.90 | -254.25 | 0.00 | |
| 7000.00 | 0.00 | 179.69 | 6972.36 | 256.44 | -230.90 | -254.25 | 0.00 | |
| 7100.00 | 0.00 | 179.69 | 7072.36 | 256.44 | -230.90 | -254.25 | 0.00 | |
| 7200.00 | 0.00 | 179.69 | 7172.36 | 256.44 | -230.90 | -254.25 | 0.00 | |
| 7300.00 | 0.00 | 179.69 | 7272.36 | 256.44 | -230.90 | -254.25 | 0.00 | |
| 7400.00 | 0.00 | 179.69 | 7372.36 | 256.44 | -230.90 | -254.25 | 0.00 | |
| 7500.00 | 0.00 | 179.69 | 7472.36 | 256.44 | -230.90 | -254.25 | 0.00 | |
| 7600.00 | 0.00 | 179.69 | 7572.36 | 256.44 | -230.90 | -254.25 | 0.00 | |
| 7700.00 | 0.00 | 179.69 | 7672.36 | 256.44 | -230.90 | -254.25 | 0.00 | |
| 7800.00 | 0.00 | 179.69 | 7772.36 | 256.44 | -230.90 | -254.25 | 0.00 | |
| 7900.00 | 0.00 | 179.69 | 7872.36 | 256.44 | -230.90 | -254.25 | 0.00 | |
| 8000.00 | 0.00 | 179.69 | 7972.36 | 256.44 | -230.90 | -254.25 | 0.00 | |
| 8100.00 | 0.00 | 179.69 | 8072.36 | 256.44 | -230.90 | -254.25 | 0.00 | |
| 8200.00 | 0.00 | 179.69 | 8172.36 | 256.44 | -230.90 | -254.25 | 0.00 | |
| 8300.00 | 0.00 | 179.69 | 8272.36 | 256.44 | -230.90 | -254.25 | 0.00 | |
| 8302.64 | 0.00 | 179.69 | 8275.00 | 256.44 | -230.90 | -254.25 | 0.00 | 1st Bone Spring Lime |
| 8400.00 | 0.00 | 179.69 | 8372.36 | 256.44 | -230.90 | -254.25 | 0.00 | |
| 8500.00 | 0.00 | 179.69 | 8472.36 | 256.44 | -230.90 | -254.25 | 0.00 | |
| 8600.00 | 0.00 | 179.69 | 8572.36 | 256.44 | -230.90 | -254.25 | 0.00 | |
| 8700.00 | 0.00 | 179.69 | 8672.36 | 256.44 | -230.90 | -254.25 | 0.00 | |
| 8800.00 | 0.00 | 179.69 | 8772.36 | 256.44 | -230.90 | -254.25 | 0.00 | |
| 8900.00 | 0.00 | 179.69 | 8872.36 | 256.44 | -230.90 | -254.25 | 0.00 | |
| 9000.00 | 0.00 | 179.69 | 8972.36 | 256.44 | -230.90 | -254.25 | 0.00 | |
| 9100.00 | 0.00 | 179.69 | 9072.36 | 256.44 | -230.90 | -254.25 | 0.00 | |
| 9200.00 | 0.00 | 179.69 | 9172.36 | 256.44 | -230.90 | -254.25 | 0.00 | |
| 9300.00 | 0.00 | 179.69 | 9272.36 | 256.44 | -230.90 | -254.25 | 0.00 | |
| 9392.64 | 0.00 | 179.69 | 9365.00 | 256.44 | -230.90 | -254.25 | 0.00 | Bone Spring 1st |
| 9400.00 | 0.00 | 179.69 | 9372.36 | 256.44 | -230.90 | -254.25 | 0.00 | |
| 9436.64 | 0.00 | 179.69 | 9409.00 | 256.44 | -230.90 | -254.25 | 0.00 | Bone Spring 2nd |
| 9500.00 | 0.00 | 179.69 | 9472.36 | 256.44 | -230.90 | -254.25 | 0.00 | |
| 9600.00 | 0.00 | 179.69 | 9572.36 | 256.44 | -230.90 | -254.25 | 0.00 | |
| 9700.00 | 0.00 | 179.69 | 9672.36 | 256.44 | -230.90 | -254.25 | 0.00 | |
| 9800.00 | 0.00 | 179.69 | 9772.36 | 256.44 | -230.90 | -254.25 | 0.00 | |
| 9900.00 | 0.00 | 179.69 | 9872.36 | 256.44 | -230.90 | -254.25 | 0.00 | |
| 10000.00 | 0.00 | 179.69 | 9972.36 | 256.44 | -230.90 | -254.25 | 0.00 | |
| 10100.00 | 0.00 | 179.69 | 10072.36 | 256.44 | -230.90 | -254.25 | 0.00 | |
| 10200.00 | 0.00 | 179.69 | 10172.36 | 256.44 | -230.90 | -254.25 | 0.00 | |
| 10300.00 | 0.00 | 179.69 | 10272.36 | 256.44 | -230.90 | -254.25 | 0.00 | |
| 10400.00 | 0.00 | 179.69 | 10372.36 | 256.44 | -230.90 | -254.25 | 0.00 | |
| 10477.64 | 0.00 | 179.69 | 10450.00 | 256.44 | -230.90 | -254.25 | 0.00 | 3rd Bone Spring Lime |
| 10500.00 | 0.00 | 179.69 | 10472.36 | 256.44 | -230.90 | -254.25 | 0.00 | |
| 10600.00 | 0.00 | 179.69 | 10572.36 | 256.44 | -230.90 | -254.25 | 0.00 | |
| 10700.00 | 0.00 | 179.69 | 10672.36 | 256.44 | -230.90 | -254.25 | 0.00 | |
| 10800.00 | 0.00 | 179.69 | 10772.36 | 256.44 | -230.90 | -254.25 | 0.00 | |
| 10900.00 | 0.00 | 179.69 | 10872.36 | 256.44 | -230.90 | -254.25 | 0.00 | |
| 11000.00 | 0.00 | 179.69 | 10972.36 | 256.44 | -230.90 | -254.25 | 0.00 | |
| 11100.00 | 0.00 | 179.69 | 11072.36 | 256.44 | -230.90 | -254.25 | 0.00 | |
| 11169.69 | 0.00 | 179.69 | 11142.04 | 256.44 | -230.90 | -254.25 | 0.00 | KOP |
| 11197.65 | 2.80 | 179.69 | 11170.00 | 255.76 | -230.89 | -253.57 | 10.00 | Bone Spring 3rd |
| 11200.00 | 3.03 | 179.69 | 11172.34 | 255.64 | -230.89 | -253.45 | 10.00 | |
| 11300.00 | 13.03 | 179.69 | 11271.24 | 241.68 | -230.82 | -239.50 | 10.00 | |
| 11400.00 | 23.03 | 179.69 | 11366.20 | 210.77 | -230.65 | -208.58 | 10.00 | |
| 11500.00 | 33.03 | 179.69 | 11454.36 | 163.83 | -230.40 | -161.65 | 10.00 | |
| 11600.00 | 43.03 | 179.69 | 11533.03 | 102.30 | -230.07 | -100.13 | 10.00 | |
| 11700.00 | 53.03 | 179.69 | 11599.82 | 28.05 | -229.67 | -25.88 | 10.00 | |
| 11717.28 | 54.76 | 179.69 | 11610.00 | 14.08 | -229.60 | -11.92 | 10.00 | Wolfcamp / Point of Penetration |
| 11800.00 | 63.03 | 179.69 | 11652.69 | -56.68 | -229.22 | 58.84 | 10.00 | |
| 11900.00 | 73.03 | 179.69 | 11690.06 | -149.30 | -228.72 | 151.45 | 10.00 | |
| 12000.00 | 83.03 | 179.69 | 11710.77 | -247.00 | -228.20 | 249.14 | 10.00 | |
| 12069.87 | 90.02 | 179.69 | 11715.00 | -316.70 | -227.83 | 318.84 | 10.00 | Landing Point |
| 12100.00 | 90.02 | 179.69 | 11714.99 | -346.83 | -227.67 | 348.96 | 0.00 | |
| 12200.00 | 90.02 | 179.69 | 11714.96 | -446.82 | -227.13 | 448.95 | 0.00 | |
| 12300.00 | 90.02 | 179.69 | 11714.92 | -546.82 | -226.59 | 548.94 | 0.00 | |

Galapagos 14-26 Fed Com 626H



Well: Galapagos 14-26 Fed Com 626H

County: Eddy

Wellbore: Permit Plan

Design: Permit Plan #1

Geodetic System: US State Plane 1983

Datum: North American Datum 1927

Ellipsoid: Clarke 1866

Zone: 3001 - NM East (NAD83)

| MD (ft) | INC (") | AZI (") | TVD (ft) | NS (ft) | EW (ft) | VS (ft) | DLS (°/100ft) | Comment |
|------------|------------|------------|-------------|------------|------------|------------|------------------|---------|
| 12400.00 | 90.02 | 179.69 | 11714.89 | -646.82 | -226.06 | 648.92 | 0.00 | |
| 12500.00 | 90.02 | 179.69 | 11714.86 | -746.82 | -225.52 | 748.91 | 0.00 | |
| 12600.00 | 90.02 | 179.69 | 11714.83 | -846.82 | -224.98 | 848.90 | 0.00 | |
| 12700.00 | 90.02 | 179.69 | 11714.79 | -946.82 | -224.45 | 948.89 | 0.00 | |
| 12800.00 | 90.02 | 179.69 | 11714.76 | -1046.82 | -223.91 | 1048.88 | 0.00 | |
| 12900.00 | 90.02 | 179.69 | 11714.73 | -1146.81 | -223.38 | 1148.87 | 0.00 | |
| 13000.00 | 90.02 | 179.69 | 11714.70 | -1246.81 | -222.84 | 1248.86 | 0.00 | |
| 13100.00 | 90.02 | 179.69 | 11714.66 | -1346.81 | -222.30 | 1348.85 | 0.00 | |
| 13200.00 | 90.02 | 179.69 | 11714.63 | -1446.81 | -221.77 | 1448.84 | 0.00 | |
| 13300.00 | 90.02 | 179.69 | 11714.60 | -1546.81 | -221.23 | 1548.83 | 0.00 | |
| 13400.00 | 90.02 | 179.69 | 11714.56 | -1646.81 | -220.70 | 1648.82 | 0.00 | |
| 13500.00 | 90.02 | 179.69 | 11714.53 | -1746.81 | -220.16 | 1748.80 | 0.00 | |
| 13600.00 | 90.02 | 179.69 | 11714.50 | -1846.80 | -219.62 | 1848.79 | 0.00 | |
| 13700.00 | 90.02 | 179.69 | 11714.47 | -1946.80 | -219.09 | 1948.78 | 0.00 | |
| 13800.00 | 90.02 | 179.69 | 11714.43 | -2046.80 | -218.55 | 2048.77 | 0.00 | |
| 13900.00 | 90.02 | 179.69 | 11714.40 | -2146.80 | -218.02 | 2148.76 | 0.00 | |
| 14000.00 | 90.02 | 179.69 | 11714.37 | -2246.80 | -217.48 | 2248.75 | 0.00 | |
| 14100.00 | 90.02 | 179.69 | 11714.34 | -2346.80 | -216.94 | 2348.74 | 0.00 | |
| 14200.00 | 90.02 | 179.69 | 11714.30 | -2446.80 | -216.41 | 2448.73 | 0.00 | |
| 14300.00 | 90.02 | 179.69 | 11714.27 | -2546.79 | -215.87 | 2548.72 | 0.00 | |
| 14400.00 | 90.02 | 179.69 | 11714.24 | -2646.79 | -215.34 | 2648.71 | 0.00 | |
| 14500.00 | 90.02 | 179.69 | 11714.20 | -2746.79 | -214.80 | 2748.69 | 0.00 | |
| 14600.00 | 90.02 | 179.69 | 11714.17 | -2846.79 | -214.26 | 2848.68 | 0.00 | |
| 14700.00 | 90.02 | 179.69 | 11714.14 | -2946.79 | -213.73 | 2948.67 | 0.00 | |
| 14800.00 | 90.02 | 179.69 | 11714.11 | -3046.79 | -213.19 | 3048.66 | 0.00 | |
| 14900.00 | 90.02 | 179.69 | 11714.07 | -3146.79 | -212.65 | 3148.65 | 0.00 | |
| 15000.00 | 90.02 | 179.69 | 11714.04 | -3246.78 | -212.12 | 3248.64 | 0.00 | |
| 15100.00 | 90.02 | 179.69 | 11714.01 | -3346.78 | -211.58 | 3348.63 | 0.00 | |
| 15200.00 | 90.02 | 179.69 | 11713.97 | -3446.78 | -211.05 | 3448.62 | 0.00 | |
| 15300.00 | 90.02 | 179.69 | 11713.94 | -3546.78 | -210.51 | 3548.61 | 0.00 | |
| 15400.00 | 90.02 | 179.69 | 11713.91 | -3646.78 | -209.97 | 3648.60 | 0.00 | |
| 15500.00 | 90.02 | 179.69 | 11713.88 | -3746.78 | -209.44 | 3748.59 | 0.00 | |
| 15600.00 | 90.02 | 179.69 | 11713.84 | -3846.78 | -208.90 | 3848.57 | 0.00 | |
| 15700.00 | 90.02 | 179.69 | 11713.81 | -3946.77 | -208.37 | 3948.56 | 0.00 | |
| 15800.00 | 90.02 | 179.69 | 11713.78 | -4046.77 | -207.83 | 4048.55 | 0.00 | |
| 15900.00 | 90.02 | 179.69 | 11713.75 | -4146.77 | -207.29 | 4148.54 | 0.00 | |
| 16000.00 | 90.02 | 179.69 | 11713.71 | -4246.77 | -206.76 | 4248.53 | 0.00 | |
| 16100.00 | 90.02 | 179.69 | 11713.68 | -4346.77 | -206.22 | 4348.52 | 0.00 | |
| 16200.00 | 90.02 | 179.69 | 11713.65 | -4446.77 | -205.69 | 4448.51 | 0.00 | |
| 16300.00 | 90.02 | 179.69 | 11713.61 | -4546.77 | -205.15 | 4548.50 | 0.00 | |
| 16400.00 | 90.02 | 179.69 | 11713.58 | -4646.76 | -204.61 | 4648.49 | 0.00 | |
| 16500.00 | 90.02 | 179.69 | 11713.55 | -4746.76 | -204.08 | 4748.48 | 0.00 | |
| 16600.00 | 90.02 | 179.69 | 11713.52 | -4846.76 | -203.54 | 4848.46 | 0.00 | |
| 16700.00 | 90.02 | 179.69 | 11713.48 | -4946.76 | -203.01 | 4948.45 | 0.00 | |
| 16800.00 | 90.02 | 179.69 | 11713.45 | -5046.76 | -202.47 | 5048.44 | 0.00 | |
| 16900.00 | 90.02 | 179.69 | 11713.42 | -5146.76 | -201.93 | 5148.43 | 0.00 | |
| 17000.00 | 90.02 | 179.69 | 11713.39 | -5246.76 | -201.40 | 5248.42 | 0.00 | |
| 17100.00 | 90.02 | 179.69 | 11713.35 | -5346.75 | -200.86 | 5348.41 | 0.00 | |
| 17200.00 | 90.02 | 179.69 | 11713.32 | -5446.75 | -200.33 | 5448.40 | 0.00 | |
| 17300.00 | 90.02 | 179.69 | 11713.29 | -5546.75 | -199.79 | 5548.39 | 0.00 | |
| 17400.00 | 90.02 | 179.69 | 11713.25 | -5646.75 | -199.25 | 5648.38 | 0.00 | |
| 17500.00 | 90.02 | 179.69 | 11713.22 | -5746.75 | -198.72 | 5748.37 | 0.00 | |
| 17600.00 | 90.02 | 179.69 | 11713.19 | -5846.75 | -198.18 | 5848.36 | 0.00 | |
| 17700.00 | 90.02 | 179.69 | 11713.16 | -5946.75 | -197.64 | 5948.34 | 0.00 | |
| 17800.00 | 90.02 | 179.69 | 11713.12 | -6046.74 | -197.11 | 6048.33 | 0.00 | |
| 17900.00 | 90.02 | 179.69 | 11713.09 | -6146.74 | -196.57 | 6148.32 | 0.00 | |
| 18000.00 | 90.02 | 179.69 | 11713.06 | -6246.74 | -196.04 | 6248.31 | 0.00 | |
| 18100.00 | 90.02 | 179.69 | 11713.03 | -6346.74 | -195.50 | 6348.30 | 0.00 | |
| 18200.00 | 90.02 | 179.69 | 11712.99 | -6446.74 | -194.96 | 6448.29 | 0.00 | |
| 18300.00 | 90.02 | 179.69 | 11712.96 | -6546.74 | -194.43 | 6548.28 | 0.00 | |
| 18400.00 | 90.02 | 179.69 | 11712.93 | -6646.74 | -193.89 | 6648.27 | 0.00 | |
| 18500.00 | 90.02 | 179.69 | 11712.89 | -6746.73 | -193.36 | 6748.26 | 0.00 | |
| 18600.00 | 90.02 | 179.69 | 11712.86 | -6846.73 | -192.82 | 6848.25 | 0.00 | |
| 18700.00 | 90.02 | 179.69 | 11712.83 | -6946.73 | -192.28 | 6948.24 | 0.00 | |
| 18800.00 | 90.02 | 179.69 | 11712.80 | -7046.73 | -191.75 | 7048.22 | 0.00 | |
| 18900.00 | 90.02 | 179.69 | 11712.76 | -7146.73 | -191.21 | 7148.21 | 0.00 | |
| 19000.00 | 90.02 | 179.69 | 11712.73 | -7246.73 | -190.68 | 7248.20 | 0.00 | |
| 19100.00 | 90.02 | 179.69 | 11712.70 | -7346.73 | -190.14 | 7348.19 | 0.00 | |
| 19200.00 | 90.02 | 179.69 | 11712.67 | -7446.72 | -189.60 | 7448.18 | 0.00 | |
| 19300.00 | 90.02 | 179.69 | 11712.63 | -7546.72 | -189.07 | 7548.17 | 0.00 | |

Galapagos 14-26 Fed Com 626H



Well: Galapagos 14-26 Fed Com 626H

County: Eddy

Wellbore: Permit Plan

Design: Permit Plan #1

Geodetic System: US State Plane 1983

Datum: North American Datum 1927

Ellipsoid: Clarke 1866

Zone: 3001 - NM East (NAD83)

| MD (ft) | INC (") | AZI (") | TVD (ft) | NS (ft) | EW (ft) | VS (ft) | DLS (°/100ft) | Comment |
|------------|------------|------------|-------------|------------|------------|------------|------------------|---------|
| 19400.00 | 90.02 | 179.69 | 11712.60 | -7646.72 | -188.53 | 7648.16 | 0.00 | |
| 19500.00 | 90.02 | 179.69 | 11712.57 | -7746.72 | -188.00 | 7748.15 | 0.00 | |
| 19600.00 | 90.02 | 179.69 | 11712.53 | -7846.72 | -187.46 | 7848.14 | 0.00 | |
| 19700.00 | 90.02 | 179.69 | 11712.50 | -7946.72 | -186.92 | 7948.13 | 0.00 | |
| 19800.00 | 90.02 | 179.69 | 11712.47 | -8046.72 | -186.39 | 8048.11 | 0.00 | |
| 19900.00 | 90.02 | 179.69 | 11712.44 | -8146.71 | -185.85 | 8148.10 | 0.00 | |
| 20000.00 | 90.02 | 179.69 | 11712.40 | -8246.71 | -185.31 | 8248.09 | 0.00 | |
| 20100.00 | 90.02 | 179.69 | 11712.37 | -8346.71 | -184.78 | 8348.08 | 0.00 | |
| 20200.00 | 90.02 | 179.69 | 11712.34 | -8446.71 | -184.24 | 8448.07 | 0.00 | |
| 20300.00 | 90.02 | 179.69 | 11712.30 | -8546.71 | -183.71 | 8548.06 | 0.00 | |
| 20400.00 | 90.02 | 179.69 | 11712.27 | -8646.71 | -183.17 | 8648.05 | 0.00 | |
| 20500.00 | 90.02 | 179.69 | 11712.24 | -8746.70 | -182.63 | 8748.04 | 0.00 | |
| 20600.00 | 90.02 | 179.69 | 11712.21 | -8846.70 | -182.10 | 8848.03 | 0.00 | |
| 20700.00 | 90.02 | 179.69 | 11712.17 | -8946.70 | -181.56 | 8948.02 | 0.00 | |
| 20800.00 | 90.02 | 179.69 | 11712.14 | -9046.70 | -181.03 | 9048.01 | 0.00 | |
| 20900.00 | 90.02 | 179.69 | 11712.11 | -9146.70 | -180.49 | 9147.99 | 0.00 | |
| 21000.00 | 90.02 | 179.69 | 11712.08 | -9246.70 | -179.95 | 9247.98 | 0.00 | |
| 21100.00 | 90.02 | 179.69 | 11712.04 | -9346.70 | -179.42 | 9347.97 | 0.00 | |
| 21200.00 | 90.02 | 179.69 | 11712.01 | -9446.69 | -178.88 | 9447.96 | 0.00 | |
| 21300.00 | 90.02 | 179.69 | 11711.98 | -9546.69 | -178.35 | 9547.95 | 0.00 | |
| 21400.00 | 90.02 | 179.69 | 11711.94 | -9646.69 | -177.81 | 9647.94 | 0.00 | |
| 21500.00 | 90.02 | 179.69 | 11711.91 | -9746.69 | -177.27 | 9747.93 | 0.00 | |
| 21600.00 | 90.02 | 179.69 | 11711.88 | -9846.69 | -176.74 | 9847.92 | 0.00 | |
| 21700.00 | 90.02 | 179.69 | 11711.85 | -9946.69 | -176.20 | 9947.91 | 0.00 | |
| 21800.00 | 90.02 | 179.69 | 11711.81 | -10046.69 | -175.67 | 10047.90 | 0.00 | |
| 21900.00 | 90.02 | 179.69 | 11711.78 | -10146.68 | -175.13 | 10147.88 | 0.00 | |
| 22000.00 | 90.02 | 179.69 | 11711.75 | -10246.68 | -174.59 | 10247.87 | 0.00 | |
| 22100.00 | 90.02 | 179.69 | 11711.72 | -10346.68 | -174.06 | 10347.86 | 0.00 | |
| 22200.00 | 90.02 | 179.69 | 11711.68 | -10446.68 | -173.52 | 10447.85 | 0.00 | |
| 22300.00 | 90.02 | 179.69 | 11711.65 | -10546.68 | -172.99 | 10547.84 | 0.00 | |
| 22400.00 | 90.02 | 179.69 | 11711.62 | -10646.68 | -172.45 | 10647.83 | 0.00 | |
| 22500.00 | 90.02 | 179.69 | 11711.58 | -10746.68 | -171.91 | 10747.82 | 0.00 | |
| 22600.00 | 90.02 | 179.69 | 11711.55 | -10846.67 | -171.38 | 10847.81 | 0.00 | |
| 22700.00 | 90.02 | 179.69 | 11711.52 | -10946.67 | -170.84 | 10947.80 | 0.00 | |
| 22800.00 | 90.02 | 179.69 | 11711.49 | -11046.67 | -170.30 | 11047.79 | 0.00 | |
| 22900.00 | 90.02 | 179.69 | 11711.45 | -11146.67 | -169.77 | 11147.78 | 0.00 | |
| 23000.00 | 90.02 | 179.69 | 11711.42 | -11246.67 | -169.23 | 11247.76 | 0.00 | |
| 23100.00 | 90.02 | 179.69 | 11711.39 | -11346.67 | -168.70 | 11347.75 | 0.00 | |
| 23200.00 | 90.02 | 179.69 | 11711.36 | -11446.67 | -168.16 | 11447.74 | 0.00 | |
| 23300.00 | 90.02 | 179.69 | 11711.32 | -11546.66 | -167.62 | 11547.73 | 0.00 | |
| 23400.00 | 90.02 | 179.69 | 11711.29 | -11646.66 | -167.09 | 11647.72 | 0.00 | |
| 23500.00 | 90.02 | 179.69 | 11711.26 | -11746.66 | -166.55 | 11747.71 | 0.00 | |
| 23600.00 | 90.02 | 179.69 | 11711.22 | -11846.66 | -166.02 | 11847.70 | 0.00 | |
| 23700.00 | 90.02 | 179.69 | 11711.19 | -11946.66 | -165.48 | 11947.69 | 0.00 | |
| 23800.00 | 90.02 | 179.69 | 11711.16 | -12046.66 | -164.94 | 12047.68 | 0.00 | |
| 23900.00 | 90.02 | 179.69 | 11711.13 | -12146.66 | -164.41 | 12147.67 | 0.00 | |
| 24000.00 | 90.02 | 179.69 | 11711.09 | -12246.65 | -163.87 | 12247.66 | 0.00 | |
| 24100.00 | 90.02 | 179.69 | 11711.06 | -12346.65 | -163.34 | 12347.64 | 0.00 | |
| 24200.00 | 90.02 | 179.69 | 11711.03 | -12446.65 | -162.80 | 12447.63 | 0.00 | |
| 24300.00 | 90.02 | 179.69 | 11710.99 | -12546.65 | -162.26 | 12547.62 | 0.00 | |
| 24400.00 | 90.02 | 179.69 | 11710.96 | -12646.65 | -161.73 | 12647.61 | 0.00 | |
| 24500.00 | 90.02 | 179.69 | 11710.93 | -12746.65 | -161.19 | 12747.60 | 0.00 | |
| 24600.00 | 90.02 | 179.69 | 11710.90 | -12846.65 | -160.66 | 12847.59 | 0.00 | |
| 24700.00 | 90.02 | 179.69 | 11710.86 | -12946.64 | -160.12 | 12947.58 | 0.00 | |
| 24800.00 | 90.02 | 179.69 | 11710.83 | -13046.64 | -159.58 | 13047.57 | 0.00 | |
| 24900.00 | 90.02 | 179.69 | 11710.80 | -13146.64 | -159.05 | 13147.56 | 0.00 | |
| 25000.00 | 90.02 | 179.69 | 11710.77 | -13246.64 | -158.51 | 13247.55 | 0.00 | |
| 25100.00 | 90.02 | 179.69 | 11710.73 | -13346.64 | -157.97 | 13347.53 | 0.00 | |
| 25200.00 | 90.02 | 179.69 | 11710.70 | -13446.64 | -157.44 | 13447.52 | 0.00 | |
| 25300.00 | 90.02 | 179.69 | 11710.67 | -13546.64 | -156.90 | 13547.51 | 0.00 | |
| 25400.00 | 90.02 | 179.69 | 11710.63 | -13646.63 | -156.37 | 13647.50 | 0.00 | |
| 25500.00 | 90.02 | 179.69 | 11710.60 | -13746.63 | -155.83 | 13747.49 | 0.00 | |
| 25600.00 | 90.02 | 179.69 | 11710.57 | -13846.63 | -155.29 | 13847.48 | 0.00 | |
| 25700.00 | 90.02 | 179.69 | 11710.54 | -13946.63 | -154.76 | 13947.47 | 0.00 | |
| 25800.00 | 90.02 | 179.69 | 11710.50 | -14046.63 | -154.22 | 14047.46 | 0.00 | |
| 25900.00 | 90.02 | 179.69 | 11710.47 | -14146.63 | -153.69 | 14147.45 | 0.00 | |
| 26000.00 | 90.02 | 179.69 | 11710.44 | -14246.63 | -153.15 | 14247.44 | 0.00 | |
| 26100.00 | 90.02 | 179.69 | 11710.41 | -14346.62 | -152.61 | 14347.43 | 0.00 | |
| 26200.00 | 90.02 | 179.69 | 11710.37 | -14446.62 | -152.08 | 14447.41 | 0.00 | |
| 26300.00 | 90.02 | 179.69 | 11710.34 | -14546.62 | -151.54 | 14547.40 | 0.00 | |

Well: Galapagos 14-26 Fed Com 626H
County: Eddy
Wellbore: Permit Plan
Design: Permit Plan #1

Geodetic System: US State Plane 1983
Datum: North American Datum 1927
Ellipsoid: Clarke 1866
Zone: 3001 - NM East (NAD83)

| MD | INC | AZI | TVD | NS | EW | VS | DLS | Comment |
|----------|-------|--------|----------|-----------|---------|----------|-----------|---------|
| (ft) | (°) | (°) | (ft) | (ft) | (ft) | (ft) | (°/100ft) | |
| 26400.00 | 90.02 | 179.69 | 11710.31 | -14646.62 | -151.01 | 14647.39 | 0.00 | |
| 26500.00 | 90.02 | 179.69 | 11710.27 | -14746.62 | -150.47 | 14747.38 | 0.00 | |
| 26600.00 | 90.02 | 179.69 | 11710.24 | -14846.62 | -149.93 | 14847.37 | 0.00 | |
| 26700.00 | 90.02 | 179.69 | 11710.21 | -14946.62 | -149.40 | 14947.36 | 0.00 | |
| 26800.00 | 90.02 | 179.69 | 11710.18 | -15046.61 | -148.86 | 15047.35 | 0.00 | |
| 26900.00 | 90.02 | 179.69 | 11710.14 | -15146.61 | -148.33 | 15147.34 | 0.00 | |
| 27000.00 | 90.02 | 179.69 | 11710.11 | -15246.61 | -147.79 | 15247.33 | 0.00 | |
| 27100.00 | 90.02 | 179.69 | 11710.08 | -15346.61 | -147.25 | 15347.32 | 0.00 | |
| 27196.31 | 90.02 | 179.69 | 11710.05 | -15442.91 | -146.74 | 15443.61 | 0.00 | Exit |
| 27200.00 | 90.02 | 179.69 | 11710.05 | -15446.61 | -146.72 | 15447.31 | 0.00 | |
| 27276.31 | 90.02 | 179.69 | 11710.00 | -15522.91 | -146.35 | 15523.60 | 0.00 | BHL |

Devon Energy

APD VARIANCE DATA

OPERATOR NAME: Devon Energy

1. SUMMARY OF Variance:

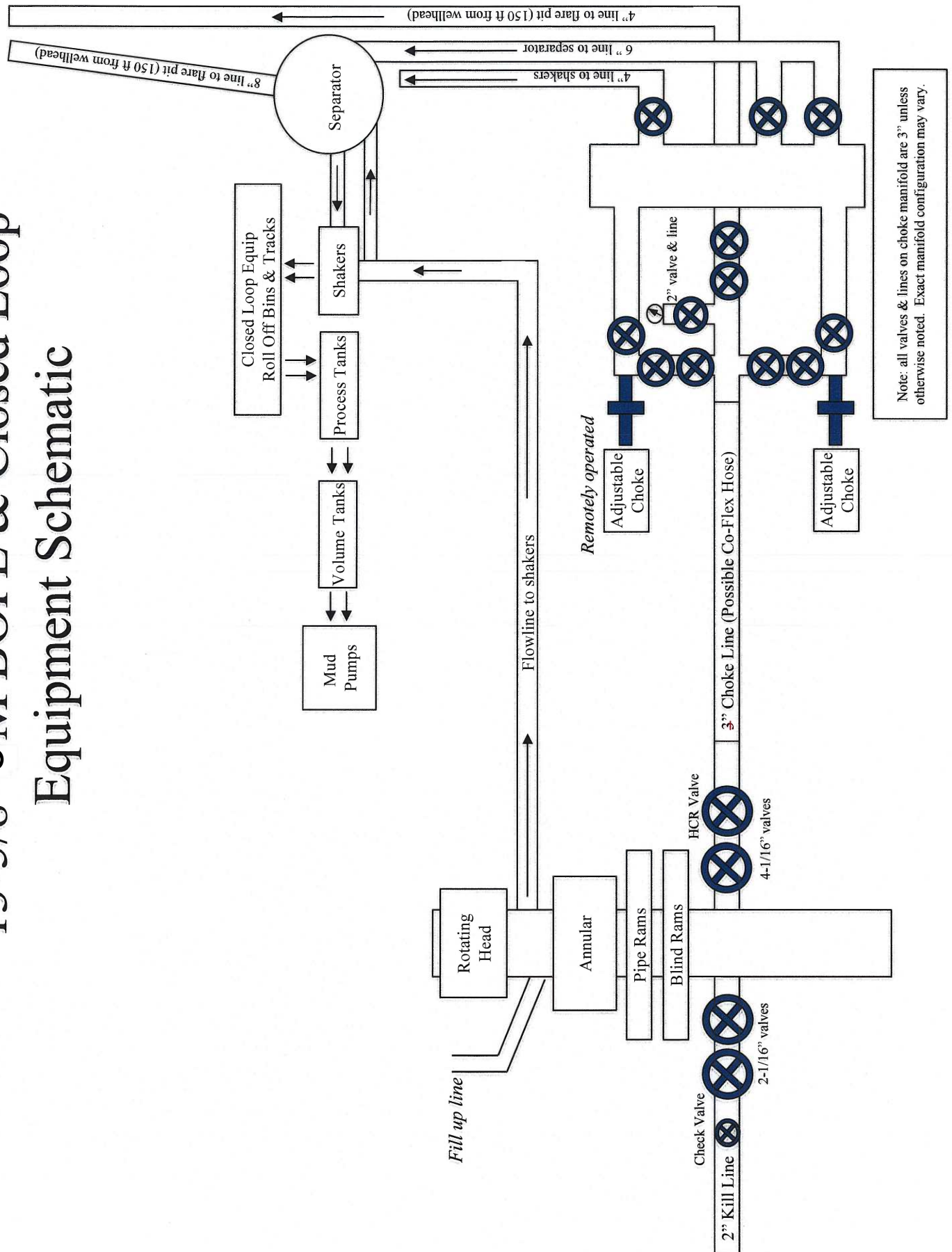
Devon Energy respectfully requests approval for the following additions to the drilling plan:

1. Potential utilization of a spudder rig to pre-set surface casing.

2. Description of Operations

1. A spudder rig contractor may move in their rig to drill the surface hole section and pre-set surface casing on this well.
 - a. After drilling the surface hole section, the rig will run casing and cement following all of the applicable rules and regulations (OnShore Order 2, all COAs and NMOCD regulations).
 - b. Rig will utilize fresh water based mud to drill surface hole to TD.
2. The wellhead will be installed and tested once the surface casing is cut off and the WOC time has been reached.
3. A blind flange with the same pressure rating as the wellhead will be installed to seal the wellbore. Pressure will be monitored with needle valves installed on two wingvalves.
 - a. A means for intervention will be maintained while the drilling rig is not over the well.
4. The BLM will be contacted and notified 24 hours prior to commencing spudder rig operations.
5. Drilling operation will be performed with the big rig. At that time an approved BOP stack will be nipped up and tested on the wellhead before drilling operations commences on each well.
 - a. The BLM will be contacted / notified 24 hours before the big rig moves back on to the pad with the pre-set surface casing.
6. Devon Energy will have supervision on the rig to ensure compliance with all BLM and NMOCD regulations and to oversee operations.
7. Once the rig is removed, Devon Energy will secure the wellhead area by placing a guard rail around the cellar area.

13-5/8" 5M BOPE & Closed Loop Equipment Schematic



A multibowl wellhead may be used. The BOP will be tested per Onshore Order #2 after installation on the surface casing which will cover testing requirements for a maximum of 30 days. If any seal subject to test pressure is broken the system must be tested.

Devon proposes using a multi-bowl wellhead assembly. This assembly will only be tested when installed on the surface casing. Minimum working pressure of the blowout preventer (BOP) and related equipment (BOPE) required for drilling below the surface casing shoe shall be 5000 (5M) psi.

- Wellhead will be installed by wellhead representatives.
- If the welding is performed by a third party, the wellhead representative will monitor the temperature to verify that it does not exceed the maximum temperature of the seal.
- Wellhead representative will install the test plug for the initial BOP test.
- Wellhead company will install a solid steel body pack-off to completely isolate the lower head after cementing intermediate casing. After installation of the pack-off, the pack-off and the lower flange will be tested to 5M, as shown on the attached schematic. Everything above the pack-off will not have been altered whatsoever from the initial nipple up. Therefore the BOP components will not be retested at that time.
- If the cement does not circulate and one inch operations would have been possible with a standard wellhead, the well head will be cut and top out operations will be conducted.
- Devon will pressure test all seals above and below the mandrel (but still above the casing) to full working pressure rating.
- Devon will test the casing to 0.22 psi/ft or 1500 psi, whichever is greater, as per Onshore Order #2.

After running the surface casing, a 13-5/8" BOP/BOPE system with a minimum rating of 5M will be installed on the wellhead system and will undergo a 250 psi low pressure test followed by a 5,000 psi high pressure test. The 5,000 psi high and 250 psi low test will cover testing requirements a maximum of 30 days, as per Onshore Order #2. If the well is not complete within 30 days of this BOP test, another full BOP test will be conducted, as per Onshore Order #2.

After running the intermediate casing with a mandrel hanger, the 13-5/8" BOP/BOPE system with a minimum rating of 5M will already be installed on the wellhead.

The pipe rams will be operated and checked each 24 hour period and each time the drill pipe is out of the hole. These tests will be logged in the daily driller's log. A 2" kill line and 3" choke line will be incorporated into the drilling spool below the ram BOP. In addition to the rams and annular preventer, additional BOP accessories include a kelly cock, floor safety valve, choke lines, and choke manifold rated at 5,000 psi WP.

Devon's proposed wellhead manufactures will be FMC Technologies, Cactus Wellhead, or Cameron.



API 5CT 10.750" 45.50lb/ft HCL80 Casing Performance Data Sheet

Manufactured to specifications of API 5CT 9th edition and bears the API monogram.

| | |
|-------|-------|
| Grade | HCL80 |
|-------|-------|

Pipe Body Mechanical Properties

| | |
|--------------------------|------------|
| Minimum Yield Strength | 80,000 psi |
| Maximum Yield Strength | 95,000 psi |
| Minimum Tensile Strength | 95,000 psi |
| Maximum Hardness | 23.0 HRC |

Sizes

| | |
|------------------------|-------------|
| OD | 10 3/4 |
| Nominal Wall Thickness | .400 in |
| Nominal Weight, T&C | 45.50 lb/ft |
| Nominal Weight, PE | 44.26 lb/ft |
| Nominal ID | 9.950 in |
| Standard Drift | 9.794 in |
| Alternate Drift | 9.875 in |

Coupling Special Clearance

Size

| | |
|--------------------------|-----------|
| OD | 11.25 in |
| Min. Length | 10.625 in |
| Diameter of Counter Bore | 10.890 in |
| Width of bearing face | .375 in |

Minimum Performance

| | |
|-------------------------|---------------|
| Collapse Pressure | 2,940 psi |
| Internal Pressure Yield | 5,210 psi |
| Pipe body Tension Yield | 1,040,000 lbs |
| Joint Strength STC | 692,000 lbs |
| Joint Strength LTC | N/A |
| Joint Strength BTC | 1,063,000 lbs |

Inspection and Testing

| | |
|--------|---|
| Visual | OD Longitudinal and independent 3rd party SEA |
| NDT | Independent 3rd party full body EMI and End Area Inspection after hydrotest Calibration notch sensitivity: 10% of specified wall thickness |

Color code

| | |
|-----------|--------------------------------------|
| Pipe ends | One red, one brown and one blue band |
| Couplings | Red with one brown band |



TEC-LOCK WEDGE

8.625" 32.00 LB/FT (.352" Wall)
BORUSAN MANNESMANN P110 HSCY

Pipe Body Data

| | | |
|-------------------------|--------------------|-------|
| Nominal OD: | 8.625 | in |
| Nominal Wall: | .352 | in |
| Nominal Weight: | 32.00 | lb/ft |
| Plain End Weight: | 31.13 | lb/ft |
| Material Grade: | P110 HSCY | |
| Mill/Specification: | BORUSAN MANNESMANN | |
| Yield Strength: | 125,000 | psi |
| Tensile Strength: | 125,000 | psi |
| Nominal ID: | 7.921 | in |
| API Drift Diameter: | 7.796 | in |
| Special Drift Diameter: | 7.875 | in |
| RBW: | 87.5 % | |
| Body Yield: | 1,144,000 | lbf |
| Burst: | 8,930 | psi |
| Collapse: | 4,230 | psi |

Connection Data

| | | |
|------------------------------|-----------|-----------------|
| Standard OD: | 9.000 | in |
| Pin Bored ID: | 7.921 | in |
| Critical Section Area: | 8.61433 | in ² |
| Tensile Efficiency: | 94.2 % | |
| Compressive Efficiency: | 100.0 % | |
| Longitudinal Yield Strength: | 1,077,000 | lbf |
| Compressive Limit: | 1,144,000 | lbf |
| Internal Pressure Rating: | 8,930 | psi |
| External Pressure Rating: | 4,230 | psi |
| Maximum Bend: | 62.6 | °/100 |

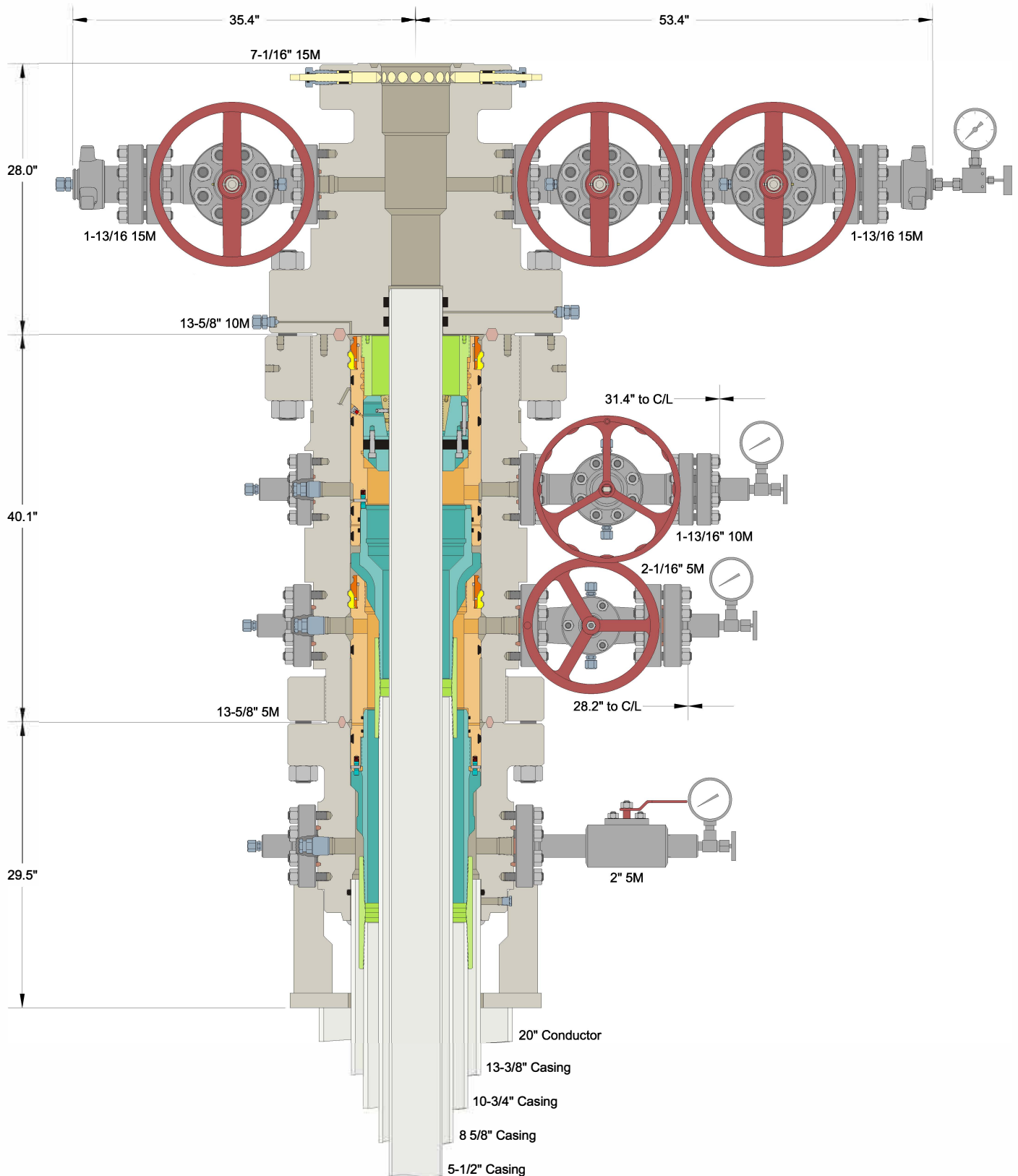
Operational Data

| | | |
|------------------------|--------|-------|
| Minimum Makeup Torque: | 29,900 | ft*lb |
| Optimum Makeup Torque: | 37,375 | ft*lb |
| Maximum Makeup Torque: | 80,900 | ft*lb |
| Minimum Yield: | 89,900 | ft*lb |
| Makeup Loss: | 5.97 | in |

Notes

Operational Torque is equivalent to the Maximum Make-Up Torque.





INFORMATION CONTAINED HEREIN IS THE PROPERTY OF CACTUS WELLHEAD, LLC. REPRODUCTION, DISCLOSURE, OR USE THEREOF IS PERMISSIBLE ONLY AS PROVIDED BY CONTRACT OR AS EXPRESSLY AUTHORIZED BY CACTUS WELLHEAD, LLC.

ALL DIMENSIONS APPROXIMATE

CACTUS WELLHEAD LLC

MATADOR RESOURCES
WOLFCAMP A WELLS (TEXAS)

20" x 13-3/8" x 10-3/4" x 8-5/8" x 5-1/2" MBU-4T-SOW Wellhead
With 13-5/8" 10M x 7-1/16" 15M CTH-DBLHPS Tubing Head,
10-3/4" & 8-5/8" Mandrel Hangers And 5-1/2" Slip Casing Hanger

| | | |
|-------------|------------|---------|
| DRAWN | DLE | 09AUG19 |
| APPRV | | |
| DRAWING NO. | HBE0000156 | |

Casing Assumptions and Load Cases

Surface

All casing design assumptions were ran in Stress Check to determine safety factor which meet or exceed both Devon Energy and BLM minimum requirements. All casing strings will be filled while running in hole in order to not exceed collapse rating of the pipe.

| Surface Casing Burst Design | | |
|-----------------------------|-------------------------|---|
| Load Case | External Pressure | Internal Pressure |
| Pressure Test | Formation Pore Pressure | Max mud weight of next hole-section plus Test psi |
| Drill Ahead | Formation Pore Pressure | Max mud weight of next hole section |
| Displace to Gas | Formation Pore Pressure | Dry gas from next casing point |

| Surface Casing Collapse Design | | |
|--------------------------------|---|-------------------|
| Load Case | External Pressure | Internal Pressure |
| Full Evacuation | Water gradient in cement, mud above TOC | None |
| Cementing | Wet cement weight | Water (8.33ppg) |

| Surface Casing Tension Design | |
|-------------------------------|-------------|
| Load Case | Assumptions |
| Overpull | 100kips |
| Runing in hole | 3 ft/s |
| Service Loads | N/A |

Casing Assumptions and Load Cases

Intermediate

All casing design assumptions were ran in Stress Check to determine safety factor which meet or exceed both Devon Energy and BLM minimum requirements. All casing strings will be filled while running in hole in order to not exceed collapse rating of the pipe.

| Intermediate Casing Burst Design | | |
|----------------------------------|-------------------------|---|
| Load Case | External Pressure | Internal Pressure |
| Pressure Test | Formation Pore Pressure | Max mud weight of next hole-section plus Test psi |
| Drill Ahead | Formation Pore Pressure | Max mud weight of next hole section |
| Fracture @ Shoe | Formation Pore Pressure | Dry gas |

| Intermediate Casing Collapse Design | | |
|-------------------------------------|---|-------------------|
| Load Case | External Pressure | Internal Pressure |
| Full Evacuation | Water gradient in cement, mud above TOC | None |
| Cementing | Wet cement weight | Water (8.33ppg) |

| Intermediate Casing Tension Design | |
|------------------------------------|-------------|
| Load Case | Assumptions |
| Overpull | 100kips |
| Runing in hole | 2 ft/s |
| Service Loads | N/A |

Casing Assumptions and Load Cases

Production

All casing design assumptions were ran in Stress Check to determine safety factor which meet or exceed both Devon Energy and BLM minimum requirements. All casing strings will be filled while running in hole in order to not exceed collapse rating of the pipe.

| Production Casing Burst Design | | |
|--------------------------------|-------------------------|---|
| Load Case | External Pressure | Internal Pressure |
| Pressure Test | Formation Pore Pressure | Fluid in hole (water or produced water) + test psi |
| Tubing Leak | Formation Pore Pressure | Packer @ KOP, leak below surface 8.6 ppg packer fluid |
| Stimulation | Formation Pore Pressure | Max frac pressure with heaviest frac fluid |

| Production Casing Collapse Design | | |
|-----------------------------------|--|-------------------|
| Load Case | External Pressure | Internal Pressure |
| Full Evacuation | Water gradient in cement, mud above TOC. | None |
| Cementing | Wet cement weight | Water (8.33ppg) |

| Production Casing Tension Design | |
|----------------------------------|-------------|
| Load Case | Assumptions |
| Overpull | 100kips |
| Runing in hole | 2 ft/s |
| Service Loads | N/A |

Casing Assumptions and Load Cases

Intermediate

All casing design assumptions were ran in Stress Check to determine safety factor which meet or exceed both Devon Energy and BLM minimum requirements. All casing strings will be filled while running in hole in order to not exceed collapse rating of the pipe.

| Intermediate Casing Burst Design | | |
|----------------------------------|-------------------------|---|
| Load Case | External Pressure | Internal Pressure |
| Pressure Test | Formation Pore Pressure | Max mud weight of next hole-section plus Test psi |
| Drill Ahead | Formation Pore Pressure | Max mud weight of next hole section |
| Fracture @ Shoe | Formation Pore Pressure | Dry gas |

| Intermediate Casing Collapse Design | | |
|-------------------------------------|---|-------------------|
| Load Case | External Pressure | Internal Pressure |
| Full Evacuation | Water gradient in cement, mud above TOC | None |
| Cementing | Wet cement weight | Water (8.33ppg) |

| Intermediate Casing Tension Design | |
|------------------------------------|-------------|
| Load Case | Assumptions |
| Overpull | 100kips |
| Runing in hole | 2 ft/s |
| Service Loads | N/A |

**PECOS DISTRICT
DRILLING CONDITIONS OF APPROVAL**

| | |
|-------------------------|-------------------------------------|
| OPERATOR'S NAME: | Galapagos 14-26 Fed Com 335H |
| LEASE NO.: | NMNM0533177A |
| LOCATION: | Section 14, T.23 S., R.31 E., NMPM |
| COUNTY: | Eddy County, New Mexico |
| Sundry ID: | N/A |

| | |
|------------------------------|-------------------------------------|
| WELL NAME & NO.: | Galapagos 14-26 Fed Com 335H |
| SURFACE HOLE FOOTAGE: | 300'/N & 568'/W |
| BOTTOM HOLE FOOTAGE: | 20'/S & 990'/W |

| | |
|------------------------------|-------------------------------------|
| WELL NAME & NO.: | Galapagos 14-26 Fed Com 336H |
| SURFACE HOLE FOOTAGE: | 300'/N & 1940'/W |
| BOTTOM HOLE FOOTAGE: | 20'/S & 2310'/W |

| | |
|------------------------------|-------------------------------------|
| WELL NAME & NO.: | Galapagos 14-26 Fed Com 337H |
| SURFACE HOLE FOOTAGE: | 100'/N & 2491'/E |
| BOTTOM HOLE FOOTAGE: | 20'/S & 1650'/E |

| | |
|------------------------------|-------------------------------------|
| WELL NAME & NO.: | Galapagos 14-26 Fed Com 338H |
| SURFACE HOLE FOOTAGE: | 100'/N & 731'/E |
| BOTTOM HOLE FOOTAGE: | 20'/S & 330'/E |

| | |
|------------------------------|-------------------------------------|
| WELL NAME & NO.: | Galapagos 14-26 Fed Com 625H |
| SURFACE HOLE FOOTAGE: | 300'/N & 508'/W |
| BOTTOM HOLE FOOTAGE: | 20'/S & 330'/W |

| | |
|------------------------------|-------------------------------------|
| WELL NAME & NO.: | Galapagos 14-26 Fed Com 626H |
| SURFACE HOLE FOOTAGE: | 300'/N & 1880'/W |
| BOTTOM HOLE FOOTAGE: | 20'/S & 1650'/W |

| | |
|------------------------------|-------------------------------------|
| WELL NAME & NO.: | Galapagos 14-26 Fed Com 627H |
| SURFACE HOLE FOOTAGE: | 100'/N & 2551'/E |
| BOTTOM HOLE FOOTAGE: | 20'/S & 2310'/E |

| | |
|------------------------------|-------------------------------------|
| WELL NAME & NO.: | Galapagos 14-26 Fed Com 628H |
| SURFACE HOLE FOOTAGE: | 100'/N & 791'/E |
| BOTTOM HOLE FOOTAGE: | 20'/S & 990'/E |

| | |
|------------------------------|-------------------------------------|
| WELL NAME & NO.: | Galapagos 14-26 Fed Com 715H |
| SURFACE HOLE FOOTAGE: | 300'/N & 538'/W |
| BOTTOM HOLE FOOTAGE: | 20'/S & 790'/W |

| | |
|------------------------------|-------------------------------------|
| WELL NAME & NO.: | Galapagos 14-26 Fed Com 716H |
| SURFACE HOLE FOOTAGE: | 300'/N & 1910'/W |
| BOTTOM HOLE FOOTAGE: | 20'/S & 2110'/W |

| | |
|------------------------------|-------------------------------------|
| WELL NAME & NO.: | Galapagos 14-26 Fed Com 717H |
| SURFACE HOLE FOOTAGE: | 100'/N & 2521'/E |
| BOTTOM HOLE FOOTAGE: | 20'/S & 1850'/E |

| | |
|------------------------------|-------------------------------------|
| WELL NAME & NO.: | Galapagos 14-26 Fed Com 718H |
| SURFACE HOLE FOOTAGE: | 100'/N & 761'/E |
| BOTTOM HOLE FOOTAGE: | 20'/S & 530'/E |

COA

| | | | |
|-------------------------------|--|---|---|
| H2S | <input checked="" type="checkbox"/> Yes | <input type="checkbox"/> No | |
| Potash | <input type="checkbox"/> None | <input type="checkbox"/> Secretary | <input checked="" type="checkbox"/> R-111-P |
| Cave/Karst Potential | <input checked="" type="checkbox"/> Low | <input type="checkbox"/> Medium | <input type="checkbox"/> High |
| Cave/Karst Potential | <input type="checkbox"/> Critical | | |
| Variance | <input type="checkbox"/> None | <input checked="" type="checkbox"/> Flex Hose | <input type="checkbox"/> Other |
| Wellhead | <input type="checkbox"/> Conventional | <input type="checkbox"/> Multibowl | <input checked="" type="checkbox"/> Both |
| Wellhead Variance | <input type="checkbox"/> Diverter | | |
| Other | <input checked="" type="checkbox"/> 4 String Area | <input type="checkbox"/> Capitan Reef | <input type="checkbox"/> WIPP |
| Other | <input checked="" type="checkbox"/> Fluid Filled | <input type="checkbox"/> Pilot Hole | <input type="checkbox"/> Open Annulus |
| Cementing | <input checked="" type="checkbox"/> Cement Squeeze | <input type="checkbox"/> EchoMeter | |
| Special Requirements | <input type="checkbox"/> Water Disposal | <input checked="" type="checkbox"/> COM | <input type="checkbox"/> Unit |
| Special Requirements Variance | <input type="checkbox"/> Break Testing | <input type="checkbox"/> Offline Cementing | |

A. HYDROGEN SULFIDE

A Hydrogen Sulfide (H2S) Drilling Plan shall be activated 500 feet prior to drilling into the **Triste Draw/Sand Dune** formation. As a result, the Hydrogen Sulfide area must meet Onshore Order 6 requirements, which includes equipment and personnel/public protection items. If Hydrogen Sulfide is encountered, please provide measured values and formations to the BLM.

B. CASING

1. The **13-3/8** inch surface casing shall be set at approximately **832 feet** (a minimum of **70 feet (Eddy County)** into the Rustler Anhydrite and above the salt) and cemented to the surface.
 - a. If cement does not circulate to the surface, the appropriate BLM office shall be notified and a temperature survey utilizing an electronic type temperature

survey with surface log readout will be used or a cement bond log shall be run to verify the top of the cement. Temperature survey will be run a minimum of six hours after pumping cement and ideally between 8-10 hours after completing the cement job.

- b. Wait on cement (WOC) time for a primary cement job will be a minimum of **24 hours in the Potash Area** or 500 pounds compressive strength, whichever is greater. (This is to include the lead cement)
 - c. Wait on cement (WOC) time for a remedial job will be a minimum of 4 hours after bringing cement to surface or 500 pounds compressive strength, whichever is greater.
 - d. If cement falls back, remedial cementing will be done prior to drilling out that string.
2. The minimum required fill of cement behind the **10-3/4** inch intermediate casing is:
- Cement to surface. If cement does not circulate see B.1.a, c-d above. **Wait on cement (WOC) time for a primary cement job is to include the lead cement slurry due to cave/karst or potash.**
 - ❖ In R111 Potash Areas if cement does not circulate to surface on the first two salt protection casing strings, the cement on the 3rd casing salt string must come to surface.

Operator has proposed to pump down 13-3/8" X 10-3/4" annulus after primary cementing stage. Operator must run a CBL from TD of the 10-3/4" casing to surface. Submit results to the BLM.

If cement does not tie-back into the previous casing shoe, a third stage remediation BH may be performed. The appropriate BLM office shall be notified.

Intermediate casing must be kept fluid filled to meet BLM minimum collapse requirement.

3. The minimum required fill of cement behind the **8-5/8** inch intermediate casing is:
 - Cement to surface. If cement does not circulate see B.1.a, c-d above. **Wait on cement (WOC) time for a primary cement job is to include the lead cement slurry due to cave/karst or potash. Cement excess is less than 25%, more cement might be required.**

4. The minimum required fill of cement behind the **5-1/2** inch production casing is:
 - Cement should tie-back at least **500 feet** into previous casing string. Operator shall provide method of verification.

C. PRESSURE CONTROL

1. Variance approved to use flex line from BOP to choke manifold. Manufacturer's specification to be readily available. No external damage to flex line. Flex line to be installed as straight as possible (no hard bends).'

2.

Option 1:

- a. Minimum working pressure of the blowout preventer (BOP) and related equipment (BOPE) required for drilling below the surface casing shoe shall be **5000 (5M)** psi.
- b. Minimum working pressure of the blowout preventer (BOP) and related equipment (BOPE) required for drilling below the **10-3/4** intermediate casing shoe shall be **5000 (5M)** psi.
- a. Minimum working pressure of the blowout preventer (BOP) and related equipment (BOPE) required for drilling below the **8-5/8** inch intermediate casing shoe shall be **5000 (5M)** psi.

Option 2:

- a. Operator has proposed a multi-bowl wellhead assembly. This assembly will only be tested when installed on the **13-3/8** inch surface casing. Minimum working pressure of the blowout preventer (BOP) and related equipment (BOPE) required for drilling below the surface casing shoe shall be **5000 (5M)** psi.
 - i. Wellhead shall be installed by manufacturer's representatives, submit documentation with subsequent sundry.
 - ii. If the welding is performed by a third party, the manufacturer's representative shall monitor the temperature to verify that it does not exceed the maximum temperature of the seal.
 - iii. Manufacturer representative shall install the test plug for the initial BOP test.
 - iv. If the cement does not circulate and one inch operations would have been possible with a standard wellhead, the well head shall be cut off, cementing operations performed and another wellhead installed.

- v. Whenever any seal subject to test pressure is broken, all the tests in OOGO2.III.A.2.i must be followed.

D. SPECIAL REQUIREMENT (S)

Communitization Agreement

- The operator will submit a Communitization Agreement to the Santa Fe Office, 301 Dinosaur Trail Santa Fe, New Mexico 87508, at least 90 days before the anticipated date of first production from a well subject to a spacing order issued by the New Mexico Oil Conservation Division. The Communitization Agreement will include the signatures of all working interest owners in all Federal and Indian leases subject to the Communitization Agreement (i.e., operating rights owners and lessees of record), or certification that the operator has obtained the written signatures of all such owners and will make those signatures available to the BLM immediately upon request.
- If the operator does not comply with this condition of approval, the BLM may take enforcement actions that include, but are not limited to, those specified in 43 CFR 3163.1.
- In addition, the well sign shall include the surface and bottom hole lease numbers. When the Communitization Agreement number is known, it shall also be on the sign.

GENERAL REQUIREMENTS

The BLM is to be notified in advance for a representative to witness:

- a. Spudding well (minimum of 24 hours)
- b. Setting and/or Cementing of all casing strings (minimum of 4 hours)
- c. BOPE tests (minimum of 4 hours)

☒ Eddy County

Call the Carlsbad Field Office, 620 East Greene St., Carlsbad, NM 88220,
(575) 361-2822

☒ Lea County

Call the Hobbs Field Station, 414 West Taylor, Hobbs NM 88240, (575)
689-5981

1. Unless the production casing has been run and cemented or the well has been properly plugged, the drilling rig shall not be removed from over the hole without prior approval.
 - a. In the event the operator has proposed to drill multiple wells utilizing a skid/walking rig. Operator shall secure the wellbore on the current well, after installing and testing the wellhead, by installing a blind flange of like pressure rating to the wellhead and a pressure gauge that can be monitored while drilling is performed on the other well(s).
 - b. When the operator proposes to set surface casing with Spudder Rig
 - Notify the BLM when moving in and removing the Spudder Rig.
 - Notify the BLM when moving in the 2nd Rig. Rig to be moved in within 90 days of notification that Spudder Rig has left the location.
 - BOP/BOPE test to be conducted per Onshore Oil and Gas Order No. 2 as soon as 2nd Rig is rigged up on well.
2. Floor controls are required for 3M or Greater systems. These controls will be on the rig floor, unobstructed, readily accessible to the driller and will be operational at all times during drilling and/or completion activities. Rig floor is defined as the area immediately around the rotary table; the area immediately above the substructure on which the draw works are located, this does not include the dog house or stairway area.
3. The record of the drilling rate along with the GR/N well log run from TD to surface (horizontal well – vertical portion of hole) shall be submitted to the BLM office as well as all other logs run on the borehole 30 days from completion. If available, a digital copy of the logs is to be submitted in addition to the paper copies. The Rustler top and top and bottom of Salt are to be recorded on the Completion Report.

A. CASING

1. Changes to the approved APD casing program need prior approval if the items substituted are of lesser grade or different casing size or are Non-API. The Operator can exchange the components of the proposal with that of superior strength (i.e. changing from J-55 to N-80, or from 36# to 40#). Changes to the approved cement program need prior approval if the altered cement plan has less volume or strength or if the changes are substantial (i.e. Multistage tool, ECP, etc.). The initial wellhead installed on the well will remain on the well with spools used as needed.
2. Wait on cement (WOC) for Potash Areas: After cementing but before commencing any tests, the casing string shall stand cemented under pressure until both of the following conditions have been met: 1) cement reaches a minimum compressive strength of 500 psi for all cement blends, 2) until cement has been in place at least 24 hours. WOC time will be recorded in the driller's log. The casing integrity test can be done (prior to the cement setting up) immediately after bumping the plug.
3. Wait on cement (WOC) for Water Basin: After cementing but before commencing any tests, the casing string shall stand cemented under pressure until both of the following conditions have been met: 1) cement reaches a minimum compressive strength of 500 psi at the shoe, 2) until cement has been in place at least 8 hours. WOC time will be recorded in the driller's log. See individual casing strings for details regarding lead cement slurry requirements. The casing integrity test can be done (prior to the cement setting up) immediately after bumping the plug.
4. Provide compressive strengths including hours to reach required 500 pounds compressive strength prior to cementing each casing string. Have well specific cement details onsite prior to pumping the cement for each casing string.
5. No pea gravel permitted for remedial or fall back remedial without prior authorization from the BLM engineer.
6. On that portion of any well approved for a 5M BOPE system or greater, a pressure integrity test of each casing shoe shall be performed. Formation at the shoe shall be tested to a minimum of the mud weight equivalent anticipated to control the formation pressure to the next casing depth or at total depth of the well. This test shall be performed before drilling more than 20 feet of new hole.
7. If hardband drill pipe is rotated inside casing, returns will be monitored for metal. If metal is found in samples, drill pipe will be pulled and rubber protectors which have a larger diameter than the tool joints of the drill pipe will be installed prior to continuing drilling operations.
8. Whenever a casing string is cemented in the R-111-P potash area, the NMOCD requirements shall be followed.

B. PRESSURE CONTROL

1. All blowout preventer (BOP) and related equipment (BOPE) shall comply with well control requirements as described in Onshore Oil and Gas Order No. 2 and API RP 53 Sec. 17.
2. If a variance is approved for a flexible hose to be installed from the BOP to the choke manifold, the following requirements apply: The flex line must meet the requirements of API 16C. Check condition of flexible line from BOP to choke manifold, replace if exterior is damaged or if line fails test. Line to be as straight as possible with no hard bends and is to be anchored according to Manufacturer's requirements. The flexible hose can be exchanged with a hose of equal size and equal or greater pressure rating. Anchor requirements, specification sheet and hydrostatic pressure test certification matching the hose in service, to be onsite for review. These documents shall be posted in the company man's trailer and on the rig floor.
3. 5M or higher system requires an HCR valve, remote kill line and annular to match. The remote kill line is to be installed prior to testing the system and tested to stack pressure.
4. If the operator has proposed a multi-bowl wellhead assembly in the APD. The following requirements must be met:
 - a. Wellhead shall be installed by manufacturer's representatives, submit documentation with subsequent sundry.
 - b. If the welding is performed by a third party, the manufacturer's representative shall monitor the temperature to verify that it does not exceed the maximum temperature of the seal.
 - c. Manufacturer representative shall install the test plug for the initial BOP test.
 - d. Whenever any seal subject to test pressure is broken, all the tests in OOGO2.III.A.2.i must be followed.
 - e. If the cement does not circulate and one inch operations would have been possible with a standard wellhead, the well head shall be cut off, cementing operations performed and another wellhead installed.
5. The appropriate BLM office shall be notified a minimum of 4 hours in advance for a representative to witness the tests.
 - a. In a water basin, for all casing strings utilizing slips, these are to be set as soon as the crew and rig are ready and any fallback cement remediation has been done. The casing cut-off and BOP installation can be initiated four hours after installing the slips, which will be approximately six hours after bumping the plug. For those casing strings not using slips, the minimum wait time before cut-off is eight hours after bumping the plug. BOP/BOPE testing can begin after cut-off or once cement reaches 500 psi compressive strength (including lead when specified), whichever is greater. However, if the float does not

hold, cut-off cannot be initiated until cement reaches 500 psi compressive strength (including lead when specified).

- b. In potash areas, for all casing strings utilizing slips, these are to be set as soon as the crew and rig are ready and any fallback cement remediation has been done. For all casing strings, casing cut-off and BOP installation can be initiated at twelve hours after bumping the plug. However, **no tests** shall commence until the cement has had a minimum of 24 hours setup time, except the casing pressure test can be initiated immediately after bumping the plug (only applies to single stage cement jobs).
- c. The tests shall be done by an independent service company utilizing a test plug not a cup or J-packer. The operator also has the option of utilizing an independent tester to test without a plug (i.e. against the casing) pursuant to Onshore Order 2 with the pressure not to exceed 70% of the burst rating for the casing. Any test against the casing must meet the WOC time for water basin (8 hours) or potash (24 hours) or 500 pounds compressive strength, whichever is greater, prior to initiating the test (see casing segment as lead cement may be critical item).
- d. The test shall be run on a 5000 psi chart for a 2-3M BOP/BOP, on a 10000 psi chart for a 5M BOP/BOPE and on a 15000 psi chart for a 10M BOP/BOPE. If a linear chart is used, it shall be a one hour chart. A circular chart shall have a maximum 2 hour clock. If a twelve hour or twenty-four hour chart is used, tester shall make a notation that it is run with a two hour clock.
- e. The results of the test shall be reported to the appropriate BLM office.
- f. All tests are required to be recorded on a calibrated test chart. A copy of the BOP/BOPE test chart and a copy of independent service company test will be submitted to the appropriate BLM office.
- g. The BOP/BOPE test shall include a low pressure test from 250 to 300 psi. The test will be held for a minimum of 10 minutes if test is done with a test plug and 30 minutes without a test plug. This test shall be performed prior to the test at full stack pressure.
- h. BOP/BOPE must be tested by an independent service company within 500 feet of the top of the Wolfcamp formation if the time between the setting of the intermediate casing and reaching this depth exceeds 20 days. This test does not exclude the test prior to drilling out the casing shoe as per Onshore Order No. 2.

C. DRILLING MUD

Mud system monitoring equipment, with derrick floor indicators and visual and audio alarms, shall be operating before drilling into the Wolfcamp formation, and shall be used until production casing is run and cemented.

D. WASTE MATERIAL AND FLUIDS

All waste (i.e. drilling fluids, trash, salts, chemicals, sewage, gray water, etc.) created as a result of drilling operations and completion operations shall be safely contained and disposed of properly at a waste disposal facility. No waste material or fluid shall be disposed of on the well location or surrounding area.

Porto-johns and trash containers will be on-location during fracturing operations or any other crew-intensive operations.



**Devon Energy Center
333 West Sheridan Avenue
Oklahoma City, Oklahoma 73102-5015**

Hydrogen Sulfide (H₂S) Contingency Plan

For

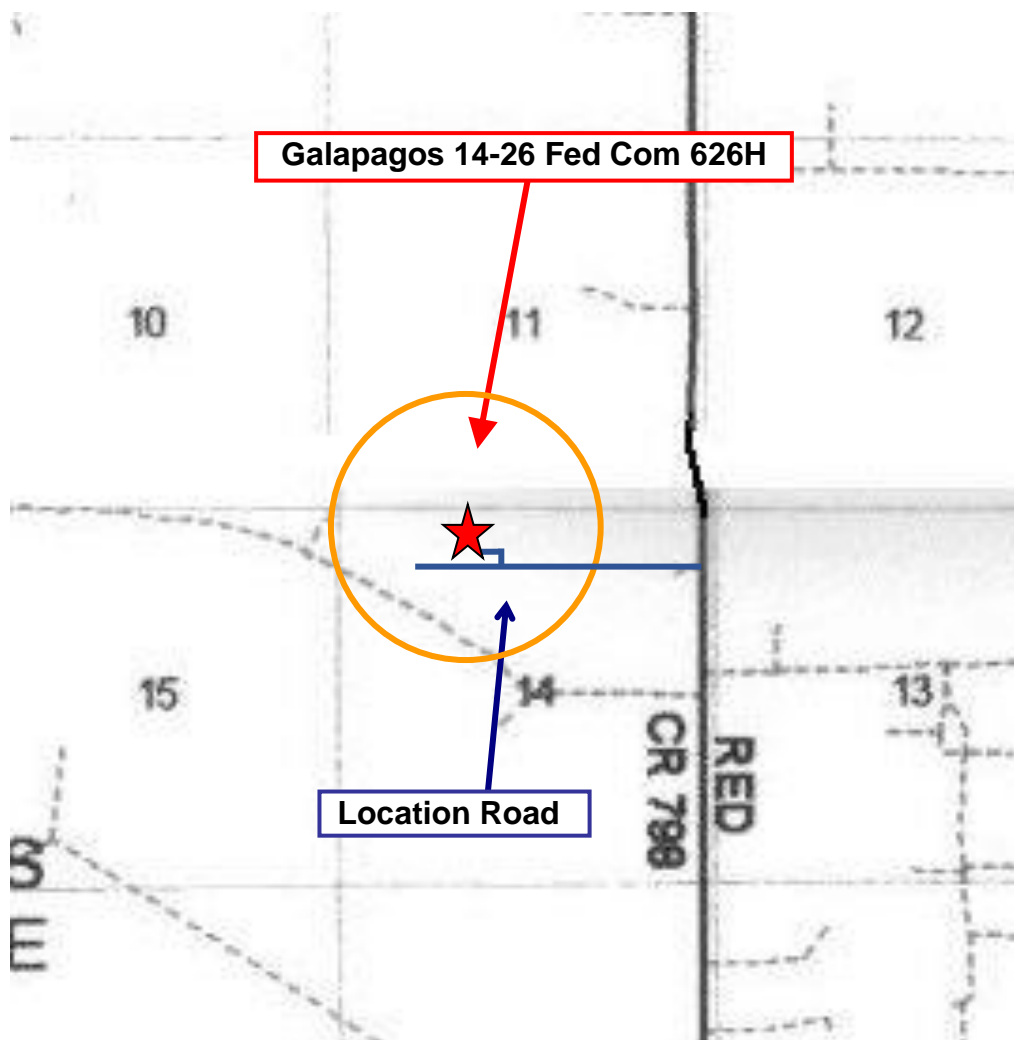
Galapagos 14-26 Fed Com 626H

**Sec-14 T-23S R-31E
300' FNL & 1880' FWL
LAT. = 32.3109070' N (NAD83)
LONG = 103.7510398' W**

Eddy County NM

Galapagos 14-26 Fed Com 626H

This is an open drilling site. H₂S monitoring equipment and emergency response equipment will be used within 500' of zones known to contain H₂S, including warning signs, wind indicators and H₂S monitor.



Assumed 100 ppm ROE = 3000' (Radius of Exposure)
100 ppm H₂S concentration shall trigger activation of this plan.

Escape

Crews shall escape upwind of escaping gas in the event of an emergency release of gas. Escape can be facilitated from the location entrance road. Crews should then block the entrance to the location from the lease road so as not to allow anyone traversing into a hazardous area. The blockade should be at a safe distance outside of the ROE. There are no homes or buildings in or near the ROE.

Assumed 100 ppm ROE = 3000'

100 ppm H₂S concentration shall trigger activation of this plan.

Emergency Procedures

In the event of a release of gas containing H₂S, the first responder(s) must

- Isolate the area and prevent entry by other persons into the 100 ppm ROE.
- Evacuate any public places encompassed by the 100 ppm ROE.
- Be equipped with H₂S monitors and air packs in order to control the release.
- Use the “buddy system” to ensure no injuries occur during the response
- Take precautions to avoid personal injury during this operation.
- Contact operator and/or local officials to aid in operation. See list of phone numbers attached.
- Have received training in the
 - Detection of H₂S, and
 - Measures for protection against the gas,
 - Equipment used for protection and emergency response.

Ignition of Gas Source

Should control of the well be considered lost and ignition considered, take care to protect against exposure to Sulfur Dioxide (SO₂). Intentional ignition must be coordinated with the NMOCD and local officials. Additionally the NM State Police may become involved. NM State Police shall be the Incident Command on scene of any major release. Take care to protect downwind whenever there is an ignition of the gas

Characteristics of H₂S and SO₂

| Common Name | Chemical Formula | Specific Gravity | Threshold Limit | Hazardous Limit | Lethal Concentration |
|-------------------------|-------------------------|-------------------------|------------------------|------------------------|-----------------------------|
| Hydrogen Sulfide | H ₂ S | 1.189 Air = 1 | 10 ppm | 100 ppm/hr | 600 ppm |
| Sulfur Dioxide | SO ₂ | 2.21 Air = 1 | 2 ppm | N/A | 1000 ppm |

Contacting Authorities

Devon Energy Corp. personnel must liaison with local and state agencies to ensure a proper response to a major release. Additionally, the OCD must be notified of the release as soon as possible but no later than 4 hours. Agencies will ask for information such as type and volume of release, wind direction, location of release, etc. Be prepared with all information available. The following call list of essential and potential responders has been prepared for use during a release. Devon Energy Corp. Company response must be in coordination with the State of New Mexico's 'Hazardous Materials Emergency Response Plan' (HMER)

Hydrogen Sulfide Drilling Operation Plan

I. HYDROGEN SULFIDE (H₂S) TRAINING

All personnel, whether regularly assigned, contracted, or employed on an unscheduled basis, will receive training from a qualified instructor in the following areas prior to commencing drilling operations on this well:

1. The hazards and characteristics of hydrogen sulfide (H₂S)
2. The proper use and maintenance of personal protective equipment and life support systems.
3. The proper use of H₂S detectors, alarms, warning systems, briefing areas, evacuation procedures, and prevailing winds.
4. The proper techniques for first aid and rescue procedures.

In addition, supervisory personnel will be trained in the following areas:

1. The effects of H₂S metal components. If high tensile tubulars are to be used, personnel will be trained in their special maintenance requirements.
2. Corrective action and shut-in procedures when drilling or reworking a well and blowout prevention and well control procedures.
3. The contents and requirements of the H₂S Drilling Operations Plan and Public Protection Plan.

There will be an initial training session just prior to encountering a known or probable H₂S zone (within 3 days or 500 feet) and weekly H₂S and well control drills for all personnel in each crew. The initial training session shall include a review of the site specific H₂S Drilling Operations Plan and the Public Protection Plan.

II. HYDROGEN SULFIDE TRAINING

Note: All H₂S safety equipment and systems will be installed, tested, and operational when drilling reaches a depth of 500 feet above, or three days prior to penetrating the first zone containing or reasonably expected to contain H₂S.

1. Well Control Equipment

- A. Flare line
- B. Choke manifold – Remotely Operated
- C. Blind rams and pipe rams to accommodate all pipe sizes with properly sized closing unit
- D. Auxiliary equipment may include if applicable: annular preventer and rotating head.
- E. Mud/Gas Separator

2. Protective equipment for essential personnel:

30-minute SCBA units located at briefing areas, as indicated on well site diagram, with escape units available in the top doghouse. As it may be difficult to communicate audibly while wearing these units, hand signals shall be utilized.

3. H₂S detection and monitoring equipment:

Portable H₂S monitors positioned on location for best coverage and response. These units have warning lights which activate when H₂S levels reach 10 ppm and audible sirens which activate at 15 ppm. Sensor locations:

- Bell nipple
- Possum Belly/Shale shaker
- Rig floor
- Choke manifold
- Cellar

Visual warning systems:

- A. Wind direction indicators as shown on well site diagram
- B. Caution/ Danger signs shall be posted on roads providing direct access to locations. Signs will be painted a high visibility yellow with black lettering of sufficient size to be reasonable distance from the immediate location. Bilingual signs will be used when appropriate.

4. Mud program:

The mud program has been designed to minimize the volume of H₂S circulated to surface. Proper mud weight, safe drilling practices and the use of H₂S scavengers will minimize hazards when penetrating H₂S bearing zones.

5. Metallurgy:

- A. All drill strings, casings, tubing, wellhead, blowout preventer, drilling spool, kill lines, choke manifold lines, and valves shall be H₂S trim.
- B. All elastomers used for packing and seals shall be H₂S trim.

6. Communication:

- A. Company personnel have/use cellular telephones in the field.
- B. Land line (telephone) communications at Office

7. Well testing:

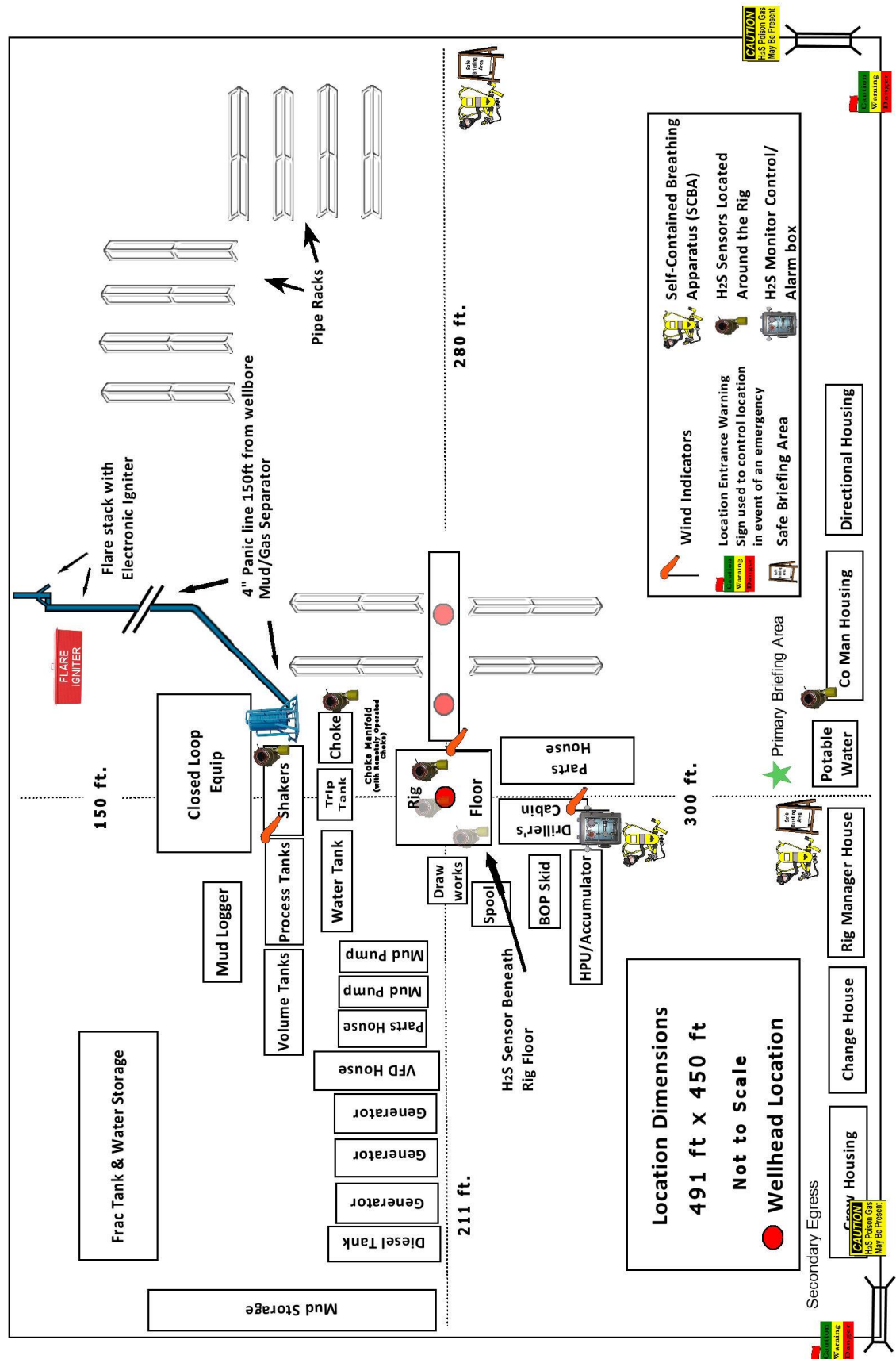
- A. Drill stem testing will be performed with a minimum number of personnel in the immediate vicinity, which are necessary to safety and adequately conduct the test. The drill stem testing will be conducted during daylight hours and formation fluids will not be flowed to the surface. All drill-stem-testing operations conducted in an H₂S environment will use the closed chamber method of testing.
- B. There will be no drill stem testing.

| <u>Devon Energy Corp. Company Call List</u> | | |
|--|---|-------------------------------|
| Drilling Supervisor – Basin – Mark Kramer | | 405-823-4796 |
| EHS Professional – Laura Wright | | 405-439-8129 |
| <u>Agency Call List</u> | | |
| <u>Lea County (575)</u> | Hobbs | |
| | Lea County Communication Authority | 393-3981 |
| | State Police | 392-5588 |
| | City Police | 397-9265 |
| | Sheriff's Office | 393-2515 |
| | Ambulance | 911 |
| | Fire Department | 397-9308 |
| | LEPC (Local Emergency Planning Committee) | 393-2870 |
| | NMOCD | 393-6161 |
| | US Bureau of Land Management | 393-3612 |
| | | |
| | | |
| <u>Eddy County (575)</u> | Carlsbad | |
| | State Police | 885-3137 |
| | City Police | 885-2111 |
| | Sheriff's Office | 887-7551 |
| | Ambulance | 911 |
| | Fire Department | 885-3125 |
| | LEPC (Local Emergency Planning Committee) | 887-3798 |
| | US Bureau of Land Management | 887-6544 |
| | NM Emergency Response Commission (Santa Fe) | (505) 476-9600 |
| | 24 HR | (505) 827-9126 |
| | National Emergency Response Center | (800) 424-8802 |
| | National Pollution Control Center: Direct | (703) 872-6000 |
| | For Oil Spills | (800) 280-7118 |
| | Emergency Services | |
| | Wild Well Control | (281) 784-4700 |
| | Cudd Pressure Control | (915) 699-0139 (915) 563-3356 |
| | Halliburton | (575) 746-2757 |
| | B. J. Services | (575) 746-3569 |
| | Give GPS position: | |
| | Native Air – Emergency Helicopter – Hobbs (TX & NM) | (800) 642-7828 |
| | Flight For Life - Lubbock, TX | (806) 743-9911 |
| | Aerocare - Lubbock, TX | (806) 747-8923 |
| | Med Flight Air Amb - Albuquerque, NM | (575) 842-4433 |
| | Lifeguard Air Med Svc. Albuquerque, NM | (800) 222-1222 |
| | Poison Control (24/7) | (575) 272-3115 |
| | Oil & Gas Pipeline 24 Hour Service | (800) 364-4366 |
| | NOAA – Website - www.nhc.noaa.gov | |
| | | |

Prepared in conjunction with
Dave Small



Devon Energy - Well Pad Rig Location Layout Safety Equipment Location



District I

1625 N. French Dr., Hobbs, NM 88240
Phone:(575) 393-6161 Fax:(575) 393-0720

District II

811 S. First St., Artesia, NM 88210
Phone:(575) 748-1283 Fax:(575) 748-9720

District III

1000 Rio Brazos Rd., Aztec, NM 87410
Phone:(505) 334-6178 Fax:(505) 334-6170

District IV

1220 S. St Francis Dr., Santa Fe, NM 87505
Phone:(505) 476-3470 Fax:(505) 476-3462

State of New Mexico
Energy, Minerals and Natural Resources
Oil Conservation Division
1220 S. St Francis Dr.
Santa Fe, NM 87505

CONDITIONS

Action 179559

CONDITIONS

| | |
|---|---|
| Operator: DEVON ENERGY PRODUCTION COMPANY, LP 333 West Sheridan Ave. Oklahoma City, OK 73102 | OGRID: 6137 |
| | Action Number: 179559 |
| | Action Type: [C-101] BLM - Federal/Indian Land Lease (Form 3160-3) |

CONDITIONS

| Created By | Condition | Condition Date |
|------------|--|----------------|
| kpickford | Notify OCD 24 hours prior to casing & cement | 1/27/2023 |
| kpickford | Will require a File As Drilled C-102 and a Directional Survey with the C-104 | 1/27/2023 |
| kpickford | Once the well is spud, to prevent ground water contamination through whole or partial conduits from the surface, the operator shall drill without interruption through the fresh water zone or zones and shall immediately set in cement the water protection string | 1/27/2023 |
| kpickford | Cement is required to circulate on both surface and intermediate1 strings of casing | 1/27/2023 |
| kpickford | Oil base muds are not to be used until fresh water zones are cased and cemented providing isolation from the oil or diesel. This includes synthetic oils. Oil based mud, drilling fluids and solids must be contained in a steel closed loop system | 1/27/2023 |