

Well Name: CHACON FEDERAL	Well Location: T24N / R3W / SEC 33 / SWNW /	County or Parish/State: RIO ARRIBA / NM
Well Number: 2	Type of Well: OIL WELL	Allottee or Tribe Name:
Lease Number: NMNM86429	Unit or CA Name:	Unit or CA Number:
US Well Number: 3003921580	Well Status: Abandoned	Operator: HILCORP ENERGY COMPANY

Subsequent Report

Sundry ID: 2712740
Type of Submission: Subsequent Report
Date Sundry Submitted: 01/26/2023
Date Operation Actually Began: 12/20/2022
Type of Action: Plug and Abandonment
Time Sundry Submitted: 09:47

Actual Procedure: The following well has been P&A'd as of 1/9/2023. Please see the attached plugging operations.

SR Attachments

Actual Procedure
CHACON_FEDERAL_2_P_A_SR_WRITEUP_20230126094734.pdf

Well Name: CHACON FEDERAL	Well Location: T24N / R3W / SEC 33 / SWNW /	County or Parish/State: RIO ARRIBA / NM
Well Number: 2	Type of Well: OIL WELL	Allottee or Tribe Name:
Lease Number: NMNM86429	Unit or CA Name:	Unit or CA Number:
US Well Number: 3003921580	Well Status: Abandoned	Operator: HILCORP ENERGY COMPANY

Operator

I certify that the foregoing is true and correct. Title 18 U.S.C. Section 1001 and Title 43 U.S.C. Section 1212, make it a crime for any person knowingly and willfully to make to any department or agency of the United States any false, fictitious or fraudulent statements or representations as to any matter within its jurisdiction. Electronic submission of Sundry Notices through this system satisfies regulations requiring a

Operator Electronic Signature: AMANDA WALKER
Signed on: JAN 26, 2023 09:47 AM
Name: HILCORP ENERGY COMPANY
Title: Operations/Regulatory Technician
Street Address: 1111 TRAVIS ST.
City: HOUSTON **State:** TX
Phone: (346) 237-2177
Email address: mwalker@hilcorp.com

Field

Representative Name:
Street Address:
City: **State:** **Zip:**
Phone:
Email address:

BLM Point of Contact

BLM POC Name: KENNETH G RENNICK
BLM POC Phone: 5055647742
Disposition: Accepted
Signature: Kenneth Rennick
BLM POC Title: Petroleum Engineer
BLM POC Email Address: krennick@blm.gov
Disposition Date: 01/26/2023

Chacon Federal 2
30-039-21580
NMNM86429
P&A SR

12/20/2022: MIRU. CK WELL PRESSURES (SICP 160 PSI, SITP 0 PSI). RUN SLICKLINE TOOLS, TAG TOP OF 3 SLIP STOP @ 7232', LATCH AND JAR, WILL NOT RELEASE, FLUID LEVEL 6900'. SDFN.

12/21/2022: CK WELL PRESSURES (SIBHP 0 PSI, SICP 350 PSI, SITP 0 PSI). ND WH. NU BOP & FT, GOOD TST. LD 156 JTS. SDFN.

12/22/2022: CK WELL PRESSURES (SIBHP 0 PSI, SICP 0 PSI, SITP 0 PSI). COMPLETE LD OF TBG. PU SCRAPER. SDFN.

12/27/2022: CK WELL PRESSURES (SIBHP 0 PSI, SICP 0 PSI, SITP 0 PSI). CONT TIH W/SCRAPER T/7121'. TOO H & LD SCRAPER. PU CMT RETAINER & SET @ 7096'. FILL HOLE W/H2O & ROLL, GETTING RETURNS AFTER 115 BBLS. SDFN.

12/28/2022: CK WELL PRESSURES (SIBHP 0 PSI, SICP 0 PSI, SITP N/A PSI). TIH TO TOP OF CIRC @ 7096'. CIRC CLEAN. ATTEMPT TO PT T/500 PSI, TST FAILED. MIX AND PUMP 17 SKS CLASS G CEMENT 1.15 FT3/SKS YIELD 15.8 PPG DENSITY, DISPLACE WITH 26 BBLS WATER, PURPOSE OF PLUG TO ISOLATE THE DAKOTA AND GRANEROS. WOC. TIH & TAG TOC @ 6986'. SDFN.

12/29/2022: CK WELL PRESSURES (SIBHP 0 PSI, SICP 0 PSI, SITP N/A PSI). TOO H. FILL HOLE W/H2O. RUN CBL F/7611' T/SURF. SDFN.

12/30/2022: CK WELL PRESSURES (SIBHP 0 PSI, SICP 0 PSI, SITP N/A PSI). TIH W/PERF GUN T/6209' & PERF. PU CIRC & SET @ 6147'. TST TBG @ 1200 PSI, TST GOOD. FILL HOLE W/H2O & EST INJ RATE. MIX AND PUMP 48 SKS CLASS G CEMENT 1.15 FT3/SKS YLD 15.8 PPG DENSITY, PUMP 21 BBLS, STING OUT PMP 2 BBLS DISPLACEMENT. LD 4 JTS. SDFN.

1/3/2023: CK WELL PRESSURES (SITP- 0 PSI. SICP- 0 PSI. SIBHP- 0 PSI). TIH & TAG @ 6005'. TIH W/PERF GUN T/5323' & PERF. TIH W/CIRC & SET @ 5273'. BREAK CIRC ABV RETAINER W/10 BBLS. STING INTO RETAINER. EST INJ. MANCOS CEMENT PLUG #3: MIX & PUMPED 48 SACKS OF CLASS "G" CEMENT AT 15.8 PPG AT 1.15 FT3 YIELD. PUMP 18.0 BBLS DISPLACEMENT, STING OUT OF CEMENT RETAINER, FINISH DISPLACEMENT. LEFT 12 SKS CEMENT ABOVE RETAINER. TRIP OUT TUBING & SETTING TOOL TO 4,197'. LD 4 JTS. SDFN.

1/4/2023: CK WELL PRESSURES (SITP- 0 PSI. SICP- 0 PSI. SIBHP- 0 PSI). TIH & TAG TOC @ 5162'. RIH W/PERF GUN T/4615' & PERF. TIH W/CIRC & SET @ 4560'. BREAK CIRCULATION ABOVE RETAINER WITH 5 BBLS. ATTEMPT TO PRESSURE TEST 5 1/2" CASING. PUMPING INTO LEAK AT 2.0 BPM AT 500 PSI. UNABLE TO TEST. STING INTO RETAINER. ATTEMPT TO ESTABLISH INJECTION RATE. PRESSURE UP TO 1,000 PSI. UNABLE TO ESTABLISH INJECTION. RETRY WITH SAME RESULTS. NM BLM GAVE PERMISSION FOR INSIDE CASING PLUG. CALL NM OCD. RECEIVED PERMISSION FROM MONICA KUEHLING FOR INSIDE CASING PLUG. INSIDE 5 1/2" CASING CLIFFHOUSE CEMENT PLUG #4: MIX & PUMPED 18 SACKS OF CLASS "G" CEMENT AT 15.8 PPG AT 1.15 FT3 YIELD. PUMP 16.5 BBLS DISPLACEMENT, TRIP OUT TUBING & SETTING TOOL TO 3,428'. TOO H T/3428'. SDFN.

Chacon Federal 2
30-039-21580
NMNM86429
P&A SR

1/5/2023: CK WELL PRESSURES (SITP- 0 PSI. SICP- 0 PSI. SIBHP- 0 PSI). TOH & TAG TOC @ 4423'. RIH W/PERF GUN & PERF @ 3860'. PU CMT RETAINER & SET @ 3810'. STING OUT OF RETAINER, PRESSURE TEST RETAINER/CASING 560 PSI, GOOD TEST, STING IN ESTABLISH INJECTION RATE @ 2 BBLS/ MINUTE 500 PSI. MIX AND PUMP 48 SKS CLASS G CEMENT 1.15FT3/SKS YIELD 15.8 PPG DENSITY, DISPLACE 12.4 BBLS WATER, STING OUT DISPLACE 2 BBLS WATER. LD TBG T/3028'. SDFN.

1/6/2023: CK WELL PRESSURES (SITP- 0 PSI. SICP- 0 PSI. SIBHP- 0 PSI). OJO, KIRTLAND, F/C, P/C CEMENT PLUG #6: MIX & PUMPED 65 SACKS OF CLASS "G" CEMENT AT 15.8 PPG AT 1.15 FT3 YIELD. PUMP 9.0 BBLS DISPLACEMENT, TRIP OUT TUBING TO 1,621'. BREAK CIRC W/3 BBLS. CEMENT AT 15.8 PPG AT 1.15 FT3 YIELD. PUMP 5.0 BBLS DISPLACEMENT, TRIP OUT OF WELL WITH TUBING. RIH W/PERF GUN & PERF @ 367'. ESTABLISH CIRCULATION UP BRADENHEAD WITH 12 BBLS WATER. PREPARE FOR 5 1/2" CASING SURFACE CEMENT PLUG #8: MIX & PUMPED 135 SACKS OF CLASS "G" CEMENT AT 15.8 PPG AT 1.15 FT3 YIELD. HAD GOOD CEMENT RETURNS OUT OF BRADENHEAD. SDFWE.

1/9/2023: CK WELL PRESSURES (SITP- 0 PSI. SICP- 0 PSI. SIBHP- 0 PSI). ND BOP. CMT LEVEL IN 5 1/2" CSG @ 13'. CUT OFF WH. INSTALL DRY HOLE MARKER. FILL 5 1/2" CASING AND WELL CELLAR WITH 25 SKS CLASS "G" CMT AT 15.8 PPG, 1.15 FT3 YIELD. RDRR @ 14:30 HRS.

**KEN CHRISTENSEN/BLM REP ONSITE TO WITNESS PLUGGING OPERATIONS*

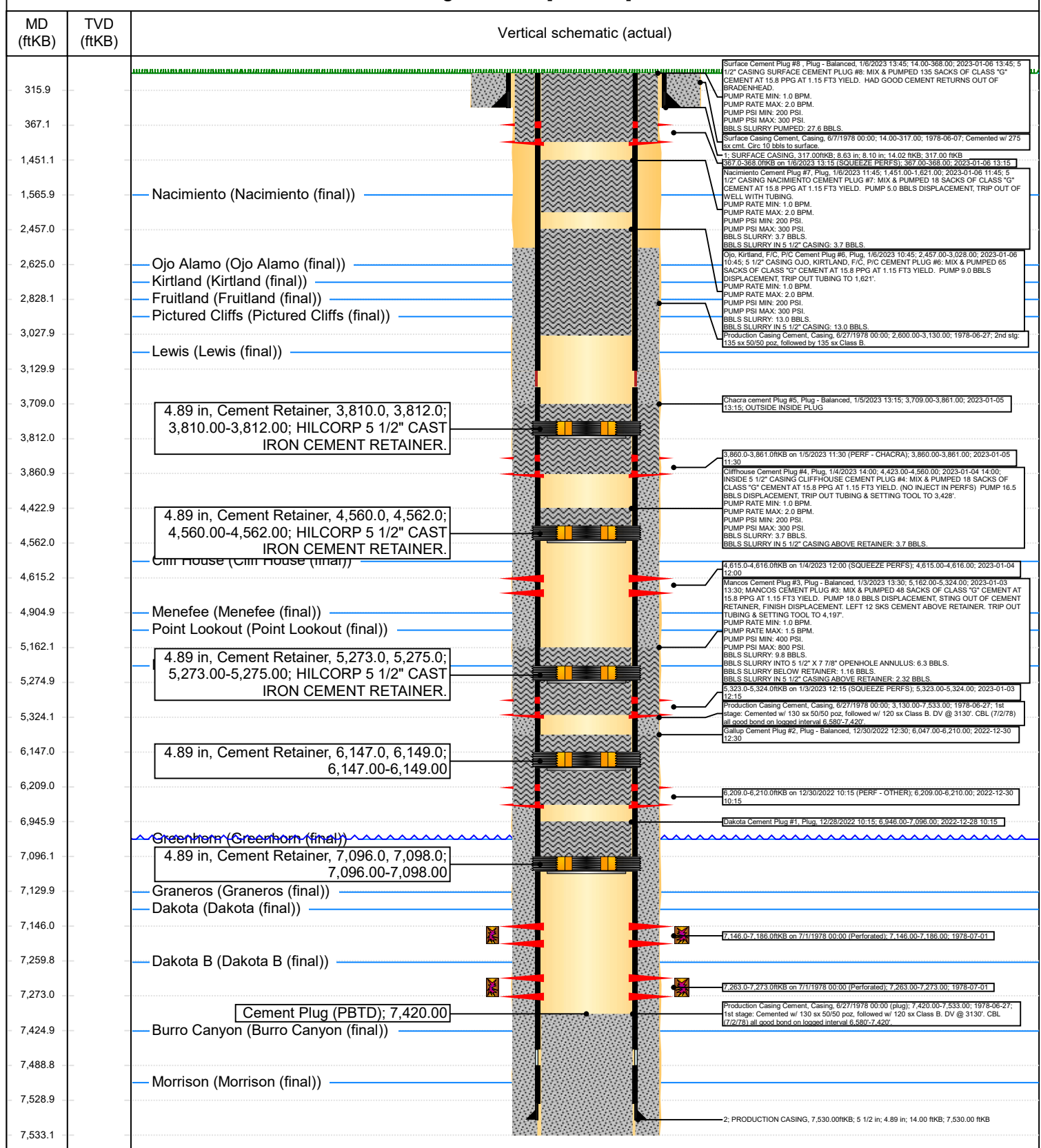


Current Schematic - Version 3

Well Name: CHACON FEDERAL #2

API / UWI 3003921580	Surface Legal Location 033-024N-003W-E	Field Name DK	Route 1413	State/Province NEW MEXICO	Well Configuration Type Vertical
Ground Elevation (ft) 7,050.00	Original KB/RT Elevation (ft) 7,064.00	KB-Ground Distance (ft) 14.00	KB-Casing Flange Distance (ft)	KB-Tubing Hanger Distance (ft)	

Original Hole [Vertical]



District I
1625 N. French Dr., Hobbs, NM 88240
Phone:(575) 393-6161 Fax:(575) 393-0720
District II
811 S. First St., Artesia, NM 88210
Phone:(575) 748-1283 Fax:(575) 748-9720
District III
1000 Rio Brazos Rd., Aztec, NM 87410
Phone:(505) 334-6178 Fax:(505) 334-6170
District IV
1220 S. St Francis Dr., Santa Fe, NM 87505
Phone:(505) 476-3470 Fax:(505) 476-3462

State of New Mexico
Energy, Minerals and Natural Resources
Oil Conservation Division
1220 S. St Francis Dr.
Santa Fe, NM 87505

COMMENTS

Action 179969

COMMENTS

Operator: HILCORP ENERGY COMPANY 1111 Travis Street Houston, TX 77002	OGRID: 372171
	Action Number: 179969
	Action Type: [C-103] Sub. Plugging (C-103P)

COMMENTS

Created By	Comment	Comment Date
mkuehling	well plugged 1/9/23	1/26/2023

District I
1625 N. French Dr., Hobbs, NM 88240
Phone:(575) 393-6161 Fax:(575) 393-0720

District II
811 S. First St., Artesia, NM 88210
Phone:(575) 748-1283 Fax:(575) 748-9720

District III
1000 Rio Brazos Rd., Aztec, NM 87410
Phone:(505) 334-6178 Fax:(505) 334-6170

District IV
1220 S. St Francis Dr., Santa Fe, NM 87505
Phone:(505) 476-3470 Fax:(505) 476-3462

State of New Mexico
Energy, Minerals and Natural Resources
Oil Conservation Division
1220 S. St Francis Dr.
Santa Fe, NM 87505

CONDITIONS

Action 179969

CONDITIONS

Operator: HILCORP ENERGY COMPANY 1111 Travis Street Houston, TX 77002	OGRID: 372171
	Action Number: 179969
	Action Type: [C-103] Sub. Plugging (C-103P)

CONDITIONS

Created By	Condition	Condition Date
smcgrath	None	1/27/2023