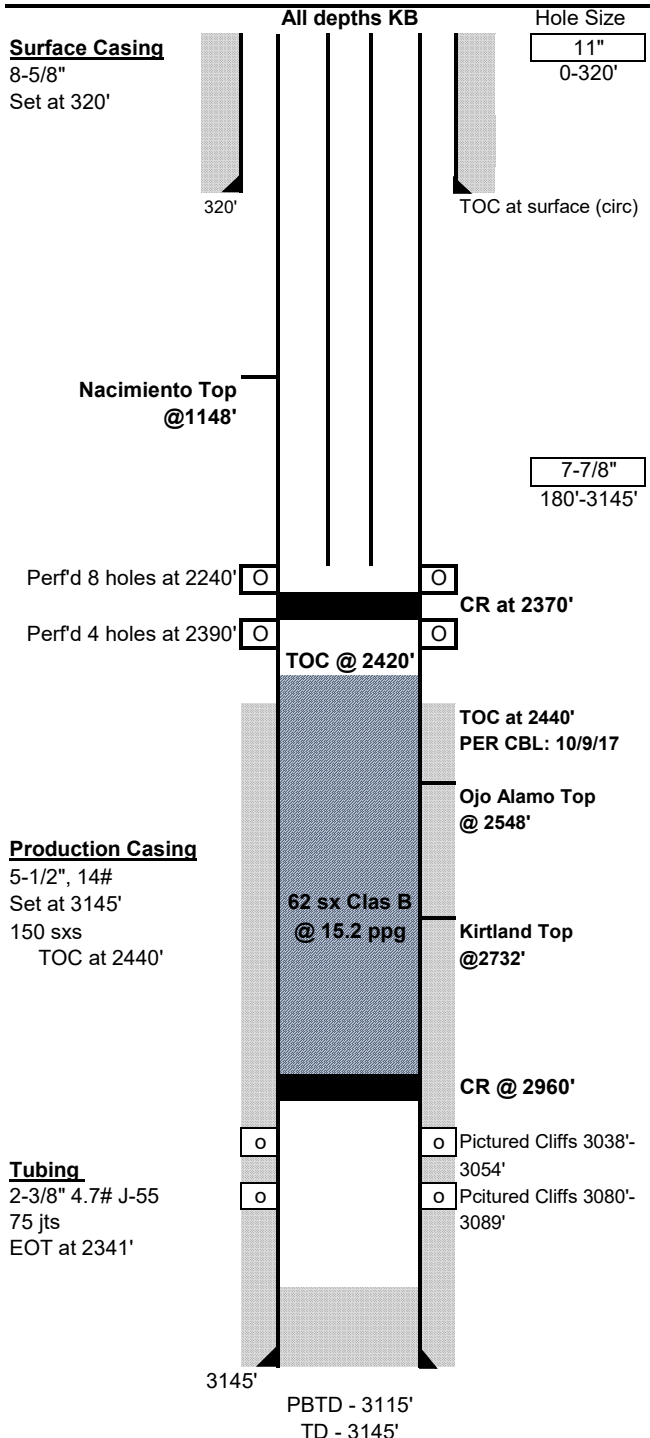




**Wellbore Schematic**

Well Name: W O Hughes 3  
 Location: Sec 08, T24N, R03W 1650' FSL & 990' FWL  
 County: Rio Arriba  
 API #: 30-039-05546  
 Co-ordinates: Lat 36.3220863 Long -107.1855164  
 Elevations: GROUND: 6864'  
 KB: 6871'  
 Depths (KB): PBTD: 3115'  
 TD: 3145'

Date Prepared: 1/12/2017  
 Last Updated: 10/13/2022 Moss  
 Spud Date: 9/18/1957  
 Completion Date: 10/1/1957  
 Last Workover Date: 10/19/2017



**Surface Casing: (09/19/1957)**  
 Drilled an 11" surface hole to 320'. Set 8-5/8" casing at 320'.  
 Cemented with 200 sxs cement, circulated cement to surface

**Production Casing: (09/27/1957)**  
 Drilled a 7-7/8" production hole to 3145'. Set 5-1/2", 14# casing at 3145'.  
 Cemented with 150 sxs cement; approximate top of cement by temp survey run 09/27/1957 at 2450'.  
 TOC confirmed to be at 2440' via CBL (10/2017)

Tubing (10/19/17)	Length (ft)
(75) 2-3/8" 4.7# J-55 tubing joints Open Ended	2341'

**Perforations:**  
 (10/01/57) Pictured Cliffs, 6SPF, 5/8", 96 holes @ 3038'-3054' & 54 holes @ 3080'-89'. Frac w/ 25000 gal water and 25000# sand  
 (01/27/81) Acidized w/ 1000 gal 7-1/2% HCL and 3000 gal 12:3 HCL

**Formations:**

Nacimiento	1148'
Ojo Alamo-	2548'
Kirtland-	2732'
Fruitland Coal-	
Pictured Cliffs-	3008'
Lewis-	3090'
Mancos-	
Gallup-	
Greenhorn-	

**Additional Notes:**  
 01/1981 CO fill from 2800'-3115' (PBTD). Located small csg leak b/w 30' & surface. Rest of csg tested good. Attempted repair, but csg pressured up to 2000# & couldn't establish inj. BH & csg gas analyses are similar. No direct communication b/w BH & csg.  
 10/2017 Set CR at 2960' & PT csg to 800#, passed. Ran CBL, good cmt 2960'-2440'. Pumped plug #1 inside only w/ 62 sx Class B cmt. Tagged TOC at 2420'. Shot 4 holes at 2390'. Set cmt retainer at 2370'. Stung into retainer & couldn't pump into perms. Shot 8 holes at 2240'. Pumped into perms, no flow on BH. TIH 75 jts 2-3/8" tubing & landed at 2341'.

**District I**  
 1625 N. French Dr., Hobbs, NM 88240  
 Phone:(575) 393-6161 Fax:(575) 393-0720

**District II**  
 811 S. First St., Artesia, NM 88210  
 Phone:(575) 748-1283 Fax:(575) 748-9720

**District III**  
 1000 Rio Brazos Rd., Aztec, NM 87410  
 Phone:(505) 334-6178 Fax:(505) 334-6170

**District IV**  
 1220 S. St Francis Dr., Santa Fe, NM 87505  
 Phone:(505) 476-3470 Fax:(505) 476-3462

**State of New Mexico**  
**Energy, Minerals and Natural Resources**  
**Oil Conservation Division**  
**1220 S. St Francis Dr.**  
**Santa Fe, NM 87505**

CONDITIONS  
 Action 188060

**CONDITIONS**

Operator: LOGOS OPERATING, LLC 2010 Afton Place Farmington, NM 87401	OGRID: 289408
	Action Number: 188060
	Action Type: [UF-WBS] Wellbore Schematic (WELLBORE SCHEMATICS)

**CONDITIONS**

Created By	Condition	Condition Date
mkuehling	None	2/20/2023