

Well Name: NORTH BELL LAKE FEDERAL	Well Location: T23S / R34E / SEC 6 / SENE /	County or Parish/State: LEA / NM
Well Number: 03	Type of Well: CONVENTIONAL GAS WELL	Allottee or Tribe Name:
Lease Number: NMNM0587	Unit or CA Name: BELL LAKE NO. 2 DEVONIAN	Unit or CA Number: NMNM68292B
US Well Number: 3002533077	Well Status: Producing Gas Well	Operator: KAISER FRANCIS OIL COMPANY

Accepted for Record Only

SUBJECT TO LIKE  
APPROVAL BY BLM

NMOCD 2/24/23

X 7

Subsequent Report

Sundry ID: 2704205

Type of Submission: Subsequent Report

Date Sundry Submitted: 12/05/2022

Date Operation Actually Began: 11/09/2022

Type of Action: Temporary Abandonment

Time Sundry Submitted: 08:17

**Actual Procedure:** 11/9/22 HPJSM. Bleed Well down. Inject 90 bbls of fluid down tubing. Spot base beam for WOR. Secure Well to monitor overnight. SDFN 11/10/22 HPJSM. Inject 90 bbls down tubing. Inject 50 bbls down casing. Insured Well is static. ND production tree. NU BOPs. MIRU WOR & support equipment. Release PKR & POOH w/ 4 jnts of 2-7/8" L-80 tbg. Secure Well. SDFN 11/11/22 HPJSM. Continue POOH From Jt # 4 to Jt # 438 of 2 7/8" 6.5# with 8 GLV's, not able to Pull 20 jt's of 2 7/8" L80 6.4# Ultra FJ, RIH 2 additional Jt's of 2 7/8" 6.5 EUE to secure the well, To Resume operations in the morning, Production Tree was sent for service, 2 7/8" string send in for inspection 11/12/22 HPJSM. Continue POOH 22 to Surface, Retrieving the On and Off Tool with no packer, R/U Cinch Wireline and RIH Gauge tagging @ 436.5', Rig Down Cinch Eline Equipment and Trip in the Hole with On and Off Tool Locating the Packer @ 436.5', retrieve to Surface and Laydown the same, RIH 14 stands and Laydown the same, Flush the Well top perf with 2% KCL packer fluid (corroton inhibitor, biocide, oxygen scavenger), Clear Pipe rack area in Preparation to Laydown the Rig. Dispatch all Tbg for Inspection, Receive the Tree from service. coordinate all services for the AM 11/13/22 HPJSM. Rig Down the WOR, Move all support equipment to the 220 Pad, Spot Cinch Unit and MU Pressure control equipment , RIH 4.15" Gauge Run To 14530', POOH tu Surface Pick up the Plug and RIH set @ 14514', Bleed Off Pressure and POOH to surface, Prepare to RIH with Bailer, glass disc rupture while been picked up dapping Cement at surface, laydown the Bailer and Lubricator, flush the satck and surface lines, made up 4.15" Gauge and RIH to 14414' no issues, POOH to surface laydown Gauge and Junk basket, RIH Bailer and Fill up with Cement as per instructions, RIH and Dump the Cement, POOH R/D Cinch, Test Casing as per Procedure 500 psi x 30 min, Bleed Off, Remove the BOP stack and Install the Tree, Dispatch Pipe Racks, Notify BLM @ 575-689-5981 Left a Message with well Info as instructed and Joe also call back to Confirm.

Received by OCD: 1/16/2023 11:43:49 AM

Page 2 of 8

Well Name: NORTH BELL LAKE FEDERAL	Well Location: T23S / R34E / SEC 6 / SENE /	County or Parish/State: LEA / NM
Well Number: 03	Type of Well: CONVENTIONAL GAS WELL	Allottee or Tribe Name:
Lease Number: NMNM0587	Unit or CA Name: BELL LAKE NO. 2 DEVONIAN	Unit or CA Number: NMNM68292B
US Well Number: 3002533077	Well Status: Producing Gas Well	Operator: KAISER FRANCIS OIL COMPANY

SR Attachments

Actual Procedure

TA\_WBD\_Procedure\_MIT\_Chart\_Bell\_Lake\_North\_3\_6\_\_Apache\_\_20221205081723.pdf

SR Conditions of Approval

Specialist Review

TA\_COA\_20230114012514.pdf

Operator

I certify that the foregoing is true and correct. Title 18 U.S.C. Section 1001 and Title 43 U.S.C. Section 1212, make it a crime for any person knowingly and willfully to make to any department or agency of the United States any false, fictitious or fraudulent statements or representations as to any matter within its jurisdiction. Electronic submission of Sundry Notices through this system satisfies regulations requiring a

Operator Electronic Signature: CHRISTINA OPFER

Signed on: DEC 05, 2022 08:17 AM

Name: KAISER FRANCIS OIL COMPANY

Title: Regulatory Manager

Street Address: 6733 S YALE AVENUE

City: TULSA State: OK

Phone: (918) 491-4468

Email address: CHRISTINAO@KFOC.NET

Field

Representative Name: Jeremy Parent

Street Address: 88 Shell Rd

City: Jal State: NM Zip: 88252

Phone: (580)504-2593

Email address: jeremyp@kfoc.net

BLM Point of Contact

BLM POC Name: Jonathon W Shepard

BLM POC Title: Petroleum Engineer

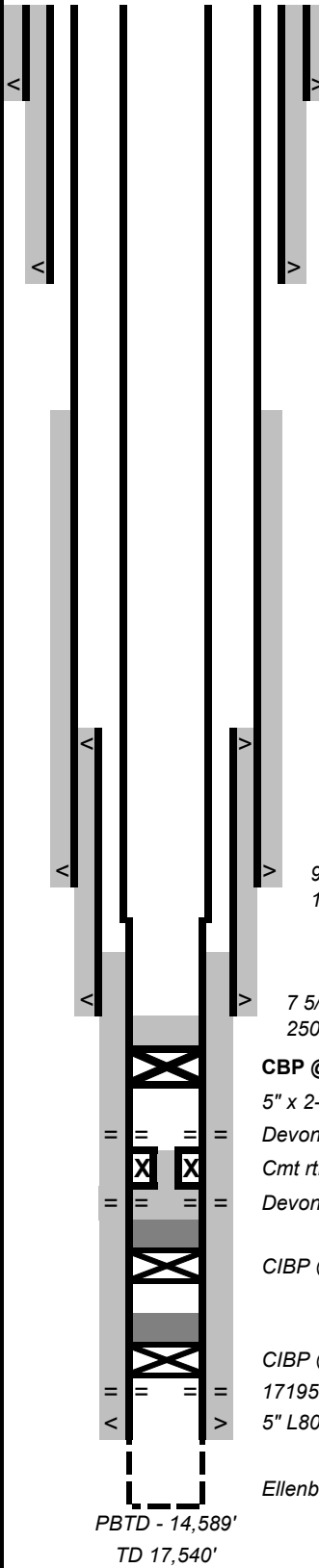
BLM POC Phone: 5752345972

BLM POC Email Address: jshepard@blm.gov

Disposition: Accepted

Disposition Date: 01/14/2023

Signature: Jonathon Shepard

Kaiser-Francis	North Bell Lake #3-6 (Apache)
<b>Location:</b> SE NE, Sec 6, T23S, R34E <b>County:</b> Lea <b>State:</b> New Mexico <b>Elevation:</b> GL - 3456' KB - 3488'	<b>API -</b> 30-025-33077 <b>Spud Date:</b> 9/5/95 <b>Completed:</b> 1/12/96 <b>Diagram:</b> Updated - 11/16/22
<div style="display: flex; justify-content: space-between;"> <div style="width: 45%;">  <div style="width: 50%;"> <p><b>Work History:</b></p> <p><b>9/95</b> - Well spud by Amerada Hess. DST #1 - Devonian 14,594'-692', Flwg P 2170#, 4.6 mmcfpd, 1344 bwpd. Core Ellenburger 17,216-17,228', recov 7.5'. Attempted Ellenburger DST, tool failed.</p> <p><b>COMPLETION:</b> DO cmt. Losing 50 BPH. Set RH pkr at 16,804'. Swab OH Ellenburger interval. KO - 5859 mcf, 74 bw, 0 bo. SITP 2430#</p> <p><b>3/8/96</b> - Add Ellenburger perfs 17,226-236'; 17,195-205' (4 spf) - Flow 4bo, 222 bw, 6643 mcf</p> <p><b>10/21/97</b> - Pmpd down tbq w/2000 gals 15% NEFE HCL loaded w/22% methanol &amp; displ w/100 BFW loaded w/5 gals 1000 foamer. pmpd 500 gals 15% HCL 12 BFW, 12 bbls of caustic neutralizer &amp; 19.5 BFW to clear flowline and separator. F - 3500 mcf.</p> <p><b>7/1/98</b> - Az w/2500 gal 15% HCL acid.</p> <p><b>06/03:</b> GIH w/1 1/2" CT to 15745'. CTU problems. SD.</p> <p><b>07/03:</b> Az Ellenburger w/5000 gal 15% HCL.</p> <p><b>10/07:</b> Csg/tbg in communication. Tried to pull pkr - stuck. Cut tbq @ 16,745'. LD all tbq. Fish pkr w/ work string. Set CIBP @ 17,150' w/ 35' cmt on top. Tst csg to 500# - OK. Spot 9# mud on bottom, set CIBP @ 15,000' w/ 35 sx cmt on top. Run prod tbq, circ pkr fluid, set pkr. Perf Devonian 14,598'-14,605'. Press to 3800#, could not pmp in. Swb tst - seeing wtr entry w/ little gas (SI fluid level = 500' FS). Az w/ 2000 gals 15% NeFe HCL, 1.4 bpm @ 7650#, brk back &amp; inc rate to 9.2 bpm @ 5000#. Swb w/ gas shows but FL staying @ 1200'. Set retainer @ 14,589', sqz perfs w/ 150 sx to 4425#. Run prod strg, spot az, set pkr, perf Dev. 14,574'-580'. Perfs broke, pmpd in 10 KCl @ 2 bpm, 0 psi. Well KO flwg, 950 mcf, 7/64 ck, 3750# FTP.</p> <p><b>8/13</b> - Installed GLVs</p> <p><b>11/22</b> - Pulled tubing. Set CBP/cmt. MIT. TA'd well</p> </div> </div> </div>	
	<p>&gt; 20" K55 94# @ 900' w/1550 sks</p> <p>&gt; 13-3/8" J55 N80, S95 68 &amp; 72# @ 4867' w/4500 sks. Run 1" Top Off w/100 sxs</p> <p>TOC 9000' Est</p> <p>&gt; TOL @ 11,664' Sqz'd w/300 sxs</p> <p>&gt; 9-5/8" P110, S95 &amp; L80E 53.5# &amp; 62.8# 12,021' w/1600 sx</p> <p>TOC 14,330' Est</p> <p>&gt; 7 5/8" 39# P110 HDL liner @ 14,401' w/ 250 sx</p> <p>CBP @ 14514' w/ 30' of cement on top. 5" x 2-3/8" 1X Pkr @ 14,445'. Devonian perfs 14,574'-580' Cmt rtr @ 14,589', sqz perfs w/ 150 sx Devonian perfs 14,598'-605', tstd wet</p> <p>CIBP @ 15,000' w/ 35' cmt on top</p> <p>CIBP @ 17,150' w/ 35' cmt on top 17195'-236' O/A 5" L80 @ 17,340' w/ 350 sx</p> <p>Ellenburger Open Hole 17,340'-540'</p> <p>PBTD - 14,589' TD 17,540'</p>
	<p><b>CASING INFORMATION:</b></p> <p>5 1/2" 23# T95 LT&amp;C - 2608'</p> <p>5 1/2" 20# L80 LT&amp;C - 8773'</p> <p>XO - 0.93'</p> <p>5 1/2" 19.81# L80 (FJ?) - 2751', Top @ est. 11,382'</p> <p>XO - 0.85'</p> <p>5" 18# L80 - approx 2715', Top @ estimated 14,134'</p> <p>Stage Collar - 2.15', Top @ 16,849'</p> <p>5" 18# L80 - 45.53'</p> <p>ECP - 14.45', Top @ 16,897'</p> <p>5" 18# L80 - 152.57'</p> <p>ECP - 14.45', Top @ 17,064'</p> <p>5" 18# L80 - 260.06'</p> <p>Float Collar</p> <p>Casing was correlated to log. EOC 17,340'</p>

**Kaiser-Francis Oil Company**  
**North Bell Lake Unit #3-6 (Apache)**  
**TA procedure**  
SE NE, Section 6, T23S, R34E  
Lea County, New Mexico  
API # 30-025-33077

- 11/9/22 HPJSM. Bleed Well down. Inject 90 bbls of fluid down tubing. Spot base beam for WOR. Secure Well to monitor over night. SDFN
- 11/10/22 HPJSM. Inject 90 bbls down tubing. Inject 50 bbls down casing. Insured Well is static. ND production tree. NU BOPs. MIRU WOR & support equipment. Release PKR & POOH w/ 4 jnts of 2-7/8" L-80 tbg. Secure Well. SDFN
- 11/11/22 HPJSM. Continue POOH From Jt # 4 to Jt # 438 of 2 7/8" 6.5# with 8 GLV's, not able to Pull 20 jt's of 2 7/8" L80 6.4# Ultra FJ, RIH 2 additional Jt's of 2 7/8" 6.5 EUE to secure the well, To Resume operations in the morning, Production Tree was send for service, 2 7/8" string send in for inspection
- 11/12/22 HPJSM. Continue POOH 22 to Surface, Retrieving the On and Off Tool with no packer, R/U Cinch Wireline and RIH Gauge tagging @ 436.5', Rig Down Cinch Eline Equipment and Trip in the Hole with On and Off Tool Locating the Packer @ 436.5', retrieve to Surface and Laydown the same, RIH 14 stands and Laydown the same, Flush the Well top perf with 2% KCL packer fluid (corrotoion inhibitor, biocide, oxygen scavenger), Clear Pipe rack area in Preparation to Laydown the Rig. Dispatch all Tbg for Inspection, Receive the Tree from service. coordinate all services for the AM
- 11/13/22 HPJSM. Rig Down the WOR, Move all support equipment to the 220 Pad, Spot Cinch Unit and MU Pressure control equipment , RIH 4.15" Gauge Run To 14530', POOH tu Surface Pick up the Plug and RIH set @ 14514', Bleed Off Pressure and POOH to surface, Prepare to RIH with Bailer, glass disc rupture while been picked up dapping Cement at surface, laydown the Bailer and Lubricator, flush the satck and surface lines, made up 4.15" Gauge and RIH to 14414' no issues, POOH to surface laydown Gauge and Junk basket, RIH Bailer and Fill up with Cement as per instructions, RIH and Dump the Cement, POOH R/D Cinch, Test Casing as per Procedure 500 psi x 30 min, Bleed Off, Remove the BOP stack and Install the Tree, Dispatch Pipe Racks, Notify BLM @ 575-689-5981 Left a Message with well Info as instructed and Joe also call back to Confirm.



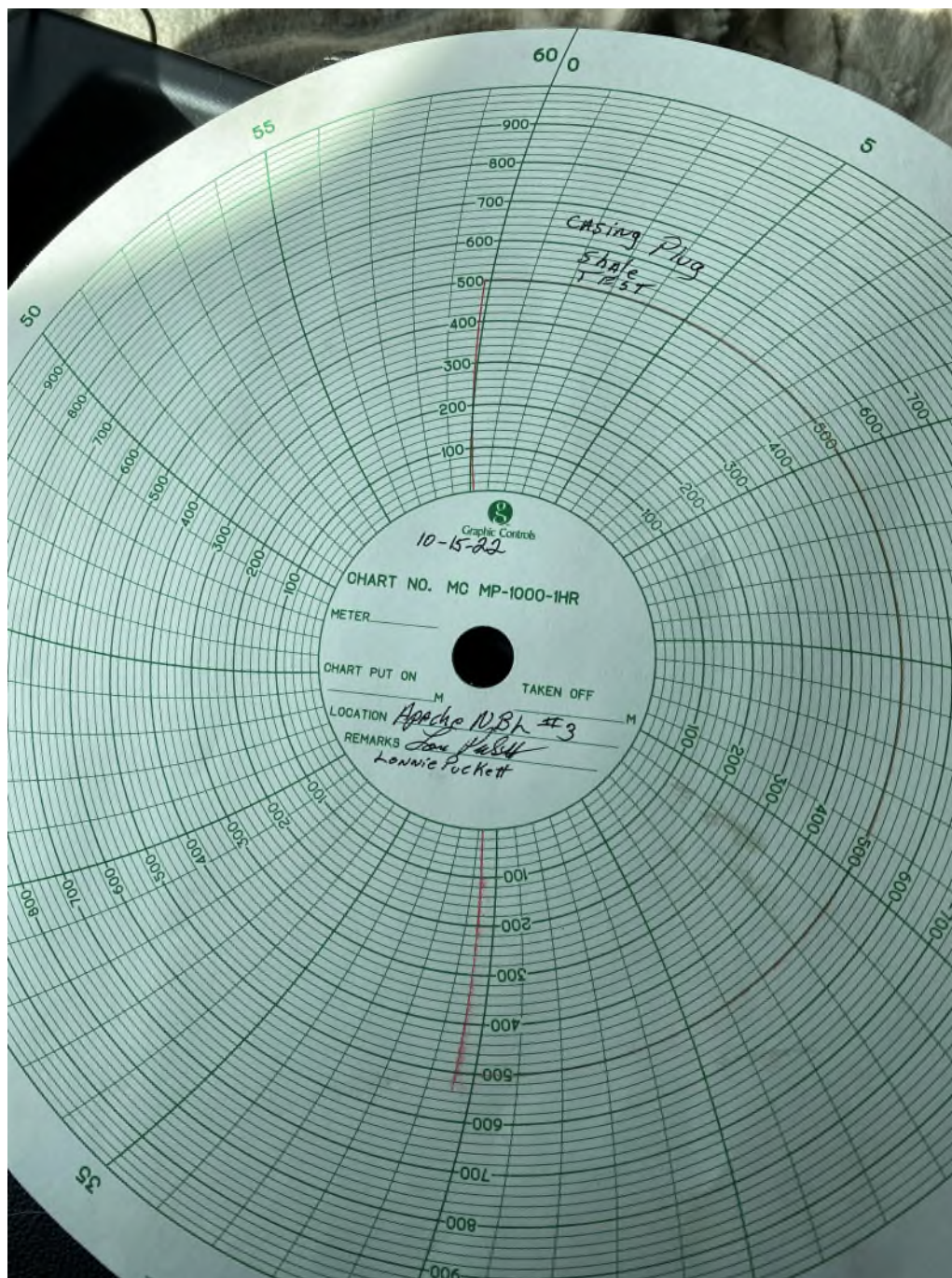
Kaiser-Francis Oil Company  
North Bell Lake Unit #3-6 (Apache)

MIT Chart

SE NE, Section 6, T23S, R34E

Lea County, New Mexico

API # 30-025-33077



Kaiser-Francis	North Bell Lake #3-6 (Apache)
<b>Location:</b> SE NE, Sec 6, T23S, R34E	<b>API -</b> 30-025-33077
<b>County:</b> Lea	<b>Spud Date:</b> 9/5/95
<b>State:</b> New Mexico	<b>Completed:</b> 1/12/96
<b>Elevation:</b> GL - 3456' KB - 3488'	<b>Diagram:</b> Updated - 11/16/22
<b>Work History:</b>	
<div><div><div><div></div><div></div><div></div><div></div><div></div><div></div><div></div><div></div><div></div><div></div><div></div><div></div><div></div><div></div><div></div><div></div><div></div><div></div><div></div><div></div><div></div><div></div><div></div><div></div><div></div><div></div><div></div><div></div><div></div><div></div><div></div><div></div><div></div><div></div><div></div><div></div><div></div><div></div><div></div><div></div><div></div><div></div><div></div><div></div><div></div><div></div><div></div><div></div><div></div><div></div><div></div><div></div><div></div><div></div><div></div><div></div><div></div><div></div><div></div><div></div><div></div><div></div><div></div><div></div><div></div><div></div><div></div><div></div><div></div><div></div><div></div><div></div><div></div><div></div><div></div><div></div><div></div><div></div><div></div><div></div><div></div><div></div><div></div><div></div><div></div><div></div><div></div><div></div><div></div><div></div><div></div><div></div><div></div><div></div><div></div><div></div><div></div><div></div><div></div><div></div><div></div><div></div><div></div><div></div><div></div><div></div><div></div><div></div><div></div><div></div><div></div><div></div><div></div><div></div><div></div><div></div><div></div><div></div><div></div><div></div><div></div><div></div><div></div><div></div><div></div><div></div><div></div><div></div><div></div><div></div><div></div><div></div><div></div><div></div><div></div><div></div><div></div><div></div><div></div><div></div><div></div><div></div><div></div><div></div><div></div><div></div><div></div><div></div><div></div><div></div><div></div><div></div><div></div><div></div><div></div><div></div><div></div><div></div><div></div><div></div><div></div><div></div><div></div><div></div><div></div><div></div><div></div><div></div><div></div><div></div><div></div><div></div><div></div><div></div><div></div><div></div><div></div><div></div><div></div><div></div><div></div><div></div><div></div><div></div><div></div><div></div><div></div><div></div><div></div><div></div><div></div><div></div><div></div><div></div><div></div><div></div><div></div><div></div><div></div><div></div><div></div><div></div><div></div><div></div><div></div><div></div><div></div><div></div><div></div><div></div><div></div><div></div><div></div><div></div><div></div><div></div><div></div><div></div><div></div><div></div><div></div><div></div><div></div><div></div><div></div><div></div><div></div><div></div><div></div><div></div><div></div><div></div><div></div><div></div><div></div><div></div><div></div><div></div><div></div><div></div><div></div><div></div><div></div><div></div><div></div><div></div><div></div><div></div><div></div><div></div><div></div><div></div><div></div><div></div><div></div><div></div><div></div><div></div><div></div><div></div><div></div><div></div><div></div><div></div><div></div><div></div><div></div><div></div><div></div><div></div><div></div><div></div><div></div><div></div><div></div><div></div><div></div><div></div><div></div><div></div><div></div><div></div><div></div><div></div><div></div><div></div><div></div><div></div><div></div><div></div><div></div><div></div><div></div><div></div><div></div><div></div><div></div><div></div><div></div><div></div><div></div><div></div><div></div><div></div><div></div><div></div><div></div><div></div><div></div><div></div><div></div><div></div><div></div><div></div><div></div><div></div><div></div><div></div><div></div><div></div><div></div><div></div><div></div><div></div><div></div><div></div><div></div><div></div><div></div><div></div><div></div><div></div><div></div><div></div><div></div><div></div><div></div><div></div><div></div><div></div><div></div><div></div><div></div><div></div><div></div><div></div><div></div><div></div><div></div><div></div><div></div><div></div><div></div><div></div><div></div><div></div><div></div><div></div><div></div><div></div><div></div><div></div><div></div><div></div><div></div><div></div><div></div><div></div><div></div><div></div><div></div><div></div><div></div><div></div><div></div><div></div><div></div><div></div><div></div><div></div><div></div><div></div><div></div><div></div><div></div><div></div><div></div><div></div><div></div><div></div><div></div><div></div><div></div><div></div><div></div><div></div><div></div><div></div><div></div><div></div><div></div><div></div><div></div><div></div><div></div><div></div><div></div><div></div><div></div><div></div><div></div><div></div><div></div><div></div><div></div><div></div><div></div><div></div><div></div><div></div><div></div><div></div><div></div><div></div><div></div><div></div><div></div><div></div><div></div><div></div><div></div><div></div><div></div><div></div><div></div><div></div><div></div><div></div><div></div><div></div><div></div><div></div><div></div><div></div><div></div><div></div><div></div><div></div><div></div><div></div><div></div><div></div><div></div><div></div><div></div><div></div><div></div><div></div><div></div><div></div><div></div><div></div><div></div><div></div><div></div><div></div><div></div><div></div><div></div><div></div><div></div><div></div><div></div><div></div><div></div><div></div><div></div><div></div><div></div><div></div><div></div><div></div><div></div><div></div><div></div><div></div><div></div><div></div><div></div><div></div><div></div><div></div><div></div><div></div><div></div><div></div><div></div><div></div><div></div><div></div><div></div><div></div><div></div><div></div><div></div><div></div><div></div><div></div><div></div><div></div><div></div><div></div><div></div><div></div><div></div><div></div><div></div><div></div><div></div><div></div><div></div><div></div><div></div><div></div><div></div><div></div><div></div><div></div><div></div><div></div><div></div><div></div><div></div><div></div><div></div><div></div><div></div><div></div><div></div><div></div><div></div><div></div><div></div><div></div><div></div><div></div><div></div><div></div><div></div><div></div><div></div><div></div><div></div><div></div><div></div><div></div><div></div><div></div><div></div><div></div><div></div><div></div><div></div><div></div><div></div><div></div><div></div><div></div><div></div><div></div><div></div><div></div><div></div><div></div><div></div><div></div><div></div><div></div><div></div><div></div><div></div><div></div><div></div><div></div><div></div><div></div><div></div><div></div><div></div><div></div><div></div><div></div><div></div><div></div><div></div><div></div><div></div><div></div><div></div><div></div><div></div><div></div><div></div><div></div><div></div><div></div><div></div><div></div><div></div><div></div><div></div><div></div><div></div><div></div><div></div><div></div><div></div><div></div><div></div><div></div><div></div><div></div><div></div><div></div><div></div><div></div><div></div><div></div><div></div><div></div><div></div><div></div><div></div><div></div><div></div><div></div><div></div><div></div><div></div><div></div><div></div><div></div><div></div><div></div><div></div><div></div><div></div><div></div><div></div><div></div><div></div><div></div><div></div><div></div><div></div><div></div><div></div><div></div><div></div><div></div><div></div><div></div><div></div><div></div><div></div><div></div><div></div><div></div><div></div><div></div><div></div><div></div><div></div><div></div><div></div><div></div><div></div><div></div><div></div><div></div><div></div><div></div><div></div><div></div><div></div><div></div><div></div><div></div><div></div><div></div><div></div><div></div><div></div><div></div><div></div><div></div><div></div><div></div><div></div><div></div><div></div><div></div><div></div><div></div><div></div><div></div><div></div><div></div><div></div><div></div><div></div><div></div><div></div><div></div><div></div><div></div><div></div><div></div><div></div><div></div><div></div><div></div><div></div><div></div><div></div><div></div><div></div><div></div><div></div><div></div><div></div><div></div><div></div><div></div><div></div><div></div><div></div><div></div><div></div><div></div><div></div><div></div><div></div><div></div><div></div><div></div><div></div><div></div><div></div><div></div><div></div><div></div><div></div><div></div><div></div><div></div><div></div><div></div><div></div><div></div><div></div><div></div><div></div><div></div><div></div><div></div><div></div><div></div><div></div><div></div><div></div><div></div><div></div><div></div><div></div><div></div><div></div><div></div><div></div><div></div><div></div><div></div><div></div><div></div><div></div><div></div><div></div><div></div><div></div><div></div><div></div><div></div><div></div><div></div><div></div><div></div><div></div><div></div><div></div><div></div><div></div><div></div><div></div><div></div><div></div><div></div><div></div><div></div><div></div><div></div><div></div><div></div><div></div><div></div><div></div><div></div><div></div><div></div><div></div><div></div><div></div><div></div><div></div><div></div><div></div><div></div><div></div><div></div><div></div><div></div><div></div><div></div><div></div><div></div><div></div><div></div><div></div><div></div><div></div><div></div><div></div><div></div><div></div><div></div><div></div><div></div><div></div><div></div><div></div><div></div><div></div><div></div><div></div><div></div><div></div><div></div><div></div><div></div><div></div><div></div><div></div><div></div><div></div><div></div><div></div><div></div><div></div><div></div><div></div><div></div><div></div><div></div><div></div><div></div><div></div><div></div><div></div><div></div><div></div><div></div><div></div><div></div><div></div><div></div><div></div><div></div><div></div><div></div><div></div><div></div><div></div><div></div><div></div><div></div><div></div><div></div><div></div><div></div><div></div><div></div><div></div><div></div><div></div><div></div><div></div><div></div><div></div><div></div><div></div><div></div><div></div><div></div><div></div><div></div><div></div><div></div><div></div><div></div><div></div><div></div><div></div><div></div><div></div><div></div><div></div><div></div><div></div><div></div><div></div><div></div><div></div><div></div><div></div><div></div><div></div><div></div><div></div><div></div><div></div><div></div><div></div><div></div><div></div><div></div><div></div><div></div><div></div><div></div><div></div><div></div><div></div><div></div><div></div><div></div><div></div><div></div><div></div><div></div><div></div><div></div><div></div><div></div><div></div><div></div><div></div><div></div><div></div><div></div><div></div><div></div><div></div><div></div><div></div><div></div><div></div><div></div><div></div><div></div><div></div><div></div><div></div><div></div><div></div><div></div><div></div><div></div><div></div><div></div><div></div><div></div><div></div><div></div><div></div><div></div><div></div><div></div><div></div><div></div><div></div><div></div><div></div><div></div><div></div><div></div><div></div><div></div><div></div><div></div><div></div><div></div><div></div><div></div><div></div><div></div><div></div><div></div><div></div><div></div><div></div><div></div><div></div><div></div><div></div><div></div><div></div><div></div><div></div><div></div><div></div><div></div><div></div><div></div><div></div><div></div><div></div><div></div><div></div><div></div><div></div><div></div><div></div><div></div><div></div><div></div><div></div><div></div><div></div><div></div><div></div><div></div><div></div><div></div><div></div><div></div><div></div><div></div><div></div><div></div><div></div><div></div><div></div><div></div><div></div><div></div><div></div><div></div><div></div><div></div><div></div><div></div><div></div><div></div><div></div><div></div><div></div><div></div><div></div><div></div><div></div><div></div><div></div><div></div><div></div><div></div><div></div><div></div><div></div><div></div><div></div><div></div><div></div><div></div><div></div><div></div><div></div><div></div><div></div><div></div><div></div><div></div><div></div><div></div><div></div><div></div><div></div><div></div><div></div><div></div><div></div><div></div><div></div><div></div><div></div><div></div><div></div><div></div><div></div><div></div><div></div><div></div><div></div><div></div><div></div><div></div><div></div><div></div><div></div><div></div><div></div><div></div><div></div><div></div><div></div><div></div><div></div><div></div><div></div><div></div><div></div><div></div><div></div><div></div><div></div><div></div><div></div><div></div><div></div><div></div><div></div><div></div><div></div><div></div><div></div><div></div><div></div><div></div><div></div><div></div><div></div><div></div><div></div><div></div><div></div><div></div><div></div><div></div><div></div><div></div><div></div><div></div><div></div><div></div><div></div><div></div><div></div><div></div><div></div><div></div><div></div><div></div><div></div><div></div><div></div><div></div><div></div><div></div><div></div><div></div><div></div><div></div><div></div><div></div><div></div><div></div><div></div><div></div><div></div><div></div><div></div><div></div><div></div><div></div><div></div><div></div><div></div><div></div><div></div><div></div><div></div><div></div><div></div><div></div><div></div><div></div><div></div><div></div><div></div><div></div><div></div><div></div><div></div><div></div><div></div><div></div><div></div><div></div><div></div><div></div><div></div><div></div><div></div><div></div><div></div><div></div><div></div><div></div><div></div><div></div><div></div><div></div><div></div><div></div><div></div><div></div><div></div><div></div><div></div><div></div><div></div><div></div><div></div><div></div><div></div><div></div><div></div><div></div><div></div><div></div><div></div><div></div><div></div><div></div><div></div></div></div></div>	

**District I**  
1625 N. French Dr., Hobbs, NM 88240  
Phone:(575) 393-6161 Fax:(575) 393-0720  
**District II**  
811 S. First St., Artesia, NM 88210  
Phone:(575) 748-1283 Fax:(575) 748-9720  
**District III**  
1000 Rio Brazos Rd., Aztec, NM 87410  
Phone:(505) 334-6178 Fax:(505) 334-6170  
**District IV**  
1220 S. St Francis Dr., Santa Fe, NM 87505  
Phone:(505) 476-3470 Fax:(505) 476-3462

State of New Mexico  
Energy, Minerals and Natural Resources  
Oil Conservation Division  
1220 S. St Francis Dr.  
Santa Fe, NM 87505

COMMENTS  
  
Action 176349

COMMENTS

Operator: KAISER-FRANCIS OIL CO PO Box 21468 Tulsa, OK 74121146	OGRID: 12361
	Action Number: 176349
	Action Type: [C-103] Sub. Temporary Abandonment (C-103U)

COMMENTS

Created By	Comment	Comment Date
plmartinez	DATA ENTRY PM	2/24/2023

**District I**  
1625 N. French Dr., Hobbs, NM 88240  
Phone:(575) 393-6161 Fax:(575) 393-0720  
**District II**  
811 S. First St., Artesia, NM 88210  
Phone:(575) 748-1283 Fax:(575) 748-9720  
**District III**  
1000 Rio Brazos Rd., Aztec, NM 87410  
Phone:(505) 334-6178 Fax:(505) 334-6170  
**District IV**  
1220 S. St Francis Dr., Santa Fe, NM 87505  
Phone:(505) 476-3470 Fax:(505) 476-3462

**State of New Mexico**  
**Energy, Minerals and Natural Resources**  
**Oil Conservation Division**  
**1220 S. St Francis Dr.**  
**Santa Fe, NM 87505**

CONDITIONS

Action 176349

CONDITIONS

Operator: KAISER-FRANCIS OIL CO PO Box 21468 Tulsa, OK 74121146	OGRID: 12361
	Action Number: 176349
	Action Type: [C-103] Sub. Temporary Abandonment (C-103U)

CONDITIONS

Created By	Condition	Condition Date
kfortner	Like approval from BLM	2/24/2023