

U.S. Department of the Interior  
BUREAU OF LAND MANAGEMENT

02/17/2023

<b>Well Name:</b> SUNDANCE FEDERAL	<b>Well Location:</b> T24S / R31E / SEC 4 / SENW /	<b>County or Parish/State:</b> EDDY / NM
<b>Well Number:</b> 1	<b>Type of Well:</b> CONVENTIONAL GAS WELL	<b>Allottee or Tribe Name:</b>
<b>Lease Number:</b> NMNM104730	<b>Unit or CA Name:</b>	<b>Unit or CA Number:</b>
<b>US Well Number:</b> 3001520538	<b>Well Status:</b> Abandoned	<b>Operator:</b> OXY USA INCORPORATED

Accepted for record – NMOCD gc3/10/2023

**Subsequent Report****Sundry ID:** 2713548**Type of Submission:** Subsequent Report**Type of Action:** Plug and Abandonment**Date Sundry Submitted:** 02/01/2023**Time Sundry Submitted:** 09:05**Date Operation Actually Began:** 11/19/2022**Actual Procedure:** Please see the attached Plugging Report, and Final Plugged Wellbore Diagram. Well is now plugged.**SR Attachments****Actual Procedure**

Sundance\_Federal\_1\_\_\_Final\_PA\_Wellbore\_Diagram\_20230201090528.pdf

Sundance\_Federal\_1\_\_\_Final\_PA\_Report\_20230201090516.pdf

<b>Well Name:</b> SUNDANCE FEDERAL	<b>Well Location:</b> T24S / R31E / SEC 4 / SENW /	<b>County or Parish/State:</b> EDDY / NM
<b>Well Number:</b> 1	<b>Type of Well:</b> CONVENTIONAL GAS WELL	<b>Allottee or Tribe Name:</b>
<b>Lease Number:</b> NMNM104730	<b>Unit or CA Name:</b>	<b>Unit or CA Number:</b>
<b>US Well Number:</b> 3001520538	<b>Well Status:</b> Abandoned	<b>Operator:</b> OXY USA INCORPORATED

**Operator**

I certify that the foregoing is true and correct. Title 18 U.S.C. Section 1001 and Title 43 U.S.C. Section 1212, make it a crime for any person knowingly and willfully to make to any department or agency of the United States any false, fictitious or fraudulent statements or representations as to any matter within its jurisdiction. Electronic submission of Sundry Notices through this system satisfies regulations requiring a

**Operator Electronic Signature:** SARAH MCKINNEY**Signed on:** FEB 01, 2023 09:05 AM**Name:** OXY USA INCORPORATED**Title:** Regulatory Analyst Sr**Street Address:** 5 GREENWAY PLAZA SUITE 110**City:** HOUSTON**State:** TX**Phone:** (713) 215-7295**Email address:** SARAH\_MCKINNEY@OXY.COM**Field****Representative Name:****Street Address:****City:****State:****Zip:****Phone:****Email address:****BLM Point of Contact****BLM POC Name:** JAMES A AMOS**BLM POC Title:** Acting Assistant Field Manager**BLM POC Phone:** 5752345927**BLM POC Email Address:** jamos@blm.gov**Disposition:** Accepted**Disposition Date:** 02/02/2023**Signature:** James A. Amos

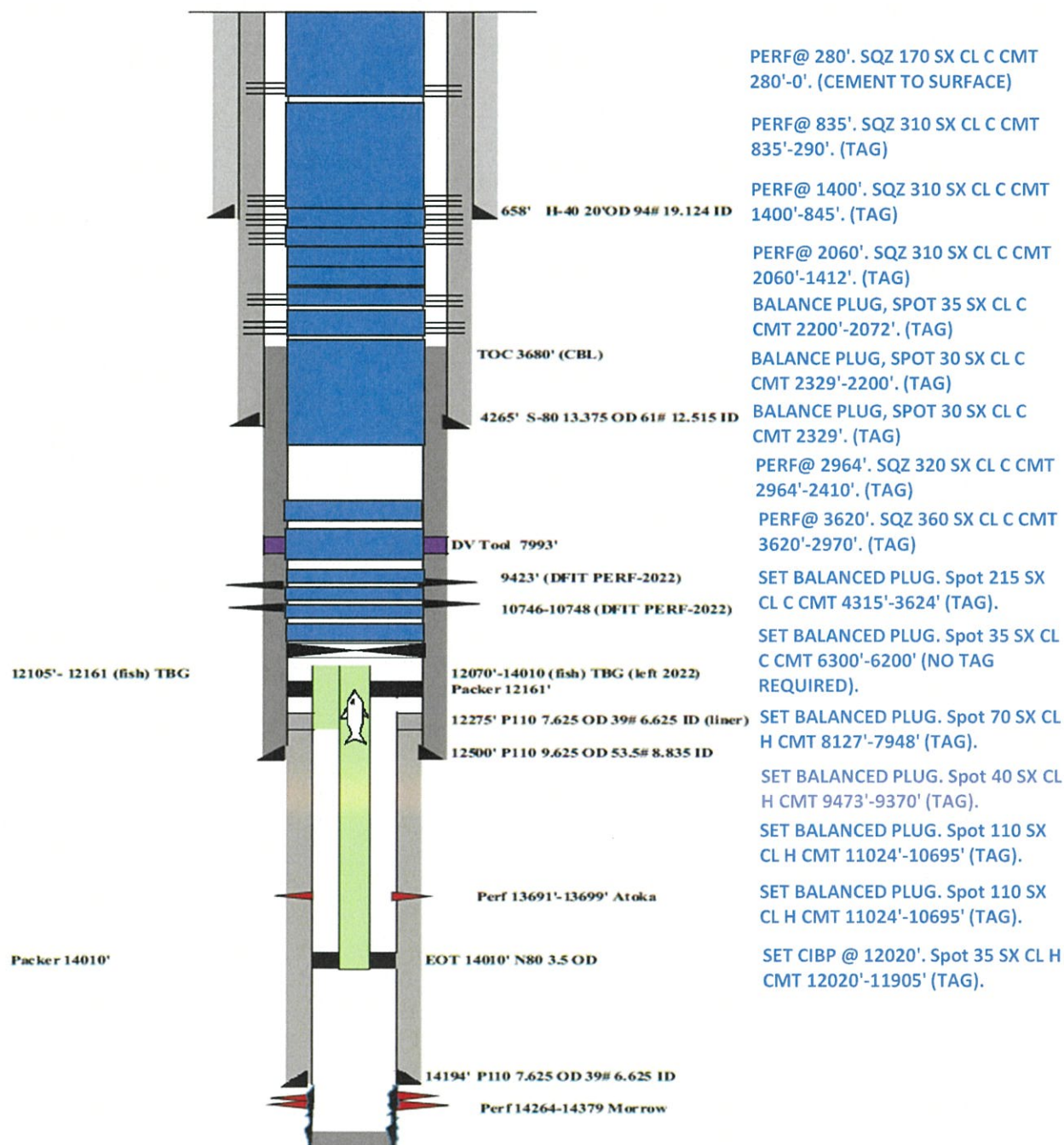
## Final Wellbore Diagram 2/1/2023

Oper.: OXY USA Inc

**Sundance Fed 1**

API - 30015205380000

FRED APPOU 3/24/22





**Sundance Federal #1 P&A**

Start Date    Remarks

11/19/2022 CREW TRAVEL TO LOCATION

11/19/2022 DROVE PULLING UNIT & P&A PUMP ASSOCIATED EQUIPMENT FROM THE SUNDANCE 10 FEDERAL 001 TO THE SUNDANCE FEDERAL 001  
HPJSM WITH ALL PERSONAL ON LOCATION DISCUSS STOP WORK AUTHORITY GOOD COMMUNICATION AT ALL TIME SUSPENDED LOADS

11/19/2022 ONE TASK AT A TIME PINCH POINTS HAND PLACEMENT UPDATE JSA AS TASK CHANGES

11/19/2022 MIRU PU &amp; P&amp;A ASSOCIATED EQUIPMENT SET CATWALK &amp; PIPE RACKS LOAD WORK STRING TUBING

11/19/2022 CHECK PSI ON WELL CSG = 1200 PSI DIG OUT CELLAR INTER CSG = 150 PSI SURF CSG = 0 PSI

11/19/2022 SECURE WELL SDFW

11/19/2022 CREW TRAVEL BACK HOME

11/21/2022 CREW TRAVEL TO LOCATION

11/21/2022 HTGSM W/ ALL PERSONAL ON LOCATION

11/21/2022 CHECK PSI ON WELL PROD CSG = 1200 PSI INTER CSG = 150 PSI SURF CSG = 0 PSI

RIG UP STEEL LINE TO FLOW BACK TANK BLEED OFF GAS HEAD FROM CASING TO 150 PSI BULL HEAD KILL WELL PUMPING 300 BBLS OF

11/21/2022 10# BRINE WATER DOWN CASING FOR WELL CONTROL MONITOR WELL FOR 30 MINUTES WELL STATIC

11/21/2022 FUNCTION TEST BOP WITH A GOOD TEST

11/21/2022 ND 11" X 10K WH

11/21/2022 NU 3K X 11" SPOOL, NU 3K X 11" HYD BOP W/ 3K 2-7/8" PIPE RAMS ON TOP AND 3K BLINDS ON BOTTOM

11/21/2022 RU WORK FLOOR WITH 2-7/8" TUBING HANDLING TOOLS, SET UP SAFETY EQUIPMENT CENTER &amp; LEVEL RIG OVER HOLE

11/21/2022 TALLY 200 JTS OF 2-7/8" WORK STRING TUBING, RIH PICKING UP 80 JTS OF 2-7/8" WORK STRING TUBING OPEN ENDED

11/21/2022 SECURE WELL SDFN

11/21/2022 CREW TRAVEL BACK HOME.

11/22/2022 CREW TRAVEL TO LOCATION

11/22/2022 HTGSM W/ ALL PERSONAL ON LOCATION

CHECK PSI ON WELL PROD CSG = 40 PSI INTER CSG = 0 PSI SURF CSG = 0 PSI OPEN WELL PUMP 100 BBLS OF 10# BRINE WATER DOWN

11/22/2022 CASING FOR WELL CONTROL

11/22/2022 CONTINUE RIH PICKING UP 300 JTS OF 2-7/8" WORK STRING TUBING EOT @ 12,020' WITH 380 JTS IN THE HOLE

11/22/2022 POOH WITH 150 STANDS LEFT IN THE HOLE 80 JTS FOR KILL STRING EOT @ 2530'

11/22/2022 SECURE WELL SDFN

11/22/2022 CREW TRAVEL BACK HOME

11/23/2022 CREW TRAVEL TO LOCATION

11/23/2022 HTGSM W/ ALL PERSONAL ON LOCATION

11/23/2022 CHECK PSI ON WELL ALL STRINGS = 0 PSI OPEN WELL PUMP 70 BBLS OF 10# BRINE WATER DOWN CASING FOR WELL CONTROL

11/23/2022 POOH WITH 80 JTS OF 2-7/8" WORK STRING TUBING

MIRU RENEGADE WL RIH W/ 8.25" GR/JB TO @ 12,030" (WMD) POOH W/ GR/JB, PICK UP 9-5/8" CIBP RIH W/ WL SET CIBP @ 12,020'

11/23/2022 WITH NO ISSUES POOH WITH WL SETTING TOOL RDMO WL

11/23/2022 RIH WITH 80 JTS OF 2-7/8" WORK STRING TUBING FOR KILL STRING EOT @ 2530'

11/23/2022 SECURE WELL SDFW

11/23/2022 CREW TRAVEL BACK HOME

11/28/2022 CREW TRAVEL TO LOCATION

11/28/2022 HTGSM W/ ALL PERSONAL ON LOCATION

11/28/2022 CHECK PSI ON WELL ALL STRINGS = 0 PSI OPEN WELL PUMP 70 BBLS OF 10# BRINE WATER DOWN CASING FOR WELL CONTROL

11/28/2022 CONTINUE RIH WITH 2-7/8" WORK STRING TUBING TAG 9-5/8" CIBP @ 12,020' WITH 380 JTS IN THE HOLE

RU CEMENT PUMP CIRCULATE WELL WITH 850 BBLS OF 10# BRINE WATER MIX 97.6 GALLONS OF FLEX &amp; GEL WITH 488 BBLS OF 10#

11/28/2022 BRINE WATER

11/28/2022 PRESSURE TEST CASING TO 500 PSI HOLD PRESSURE FOR 30 MINUTES WITH A GOOD TEST

1ST PLUG) BALANCED PLUG FROM 12,020' - 11,920' SPOT 35 SXS CLASS H CMT, 7.35 BBLS, 15.6# 1.18 YIELD, COVERING 103' DISPLACE

11/28/2022 CMT TO 11,917' DISPLACE W/ 69.1 BBLS

11/28/2022 POOH WITH 15 STANDS LAY DOWN 3 JTS EOT @ 10,965' WITH 347 JTS IN THE HOLE

11/28/2022 SECURE WELL SDFN

11/28/2022 CREW TRAVEL BACK HOME

11/29/2022 CREW TRAVEL TO LOCATION



11/29/2022 HTGSM W/ ALL PERSONAL ON LOCATION  
 11/29/2022 CHECK PSI ON WELL ALL STRINGS = 0 PSI OPEN WELL  
 11/29/2022 RIH WITH 2-7/8" WORK STRING TUBING TAG TOC @ 11,905' WITH 377 JTS IN THE HOLE  
 11/29/2022 POOH LAY DOWN 28 JTS EOT @ 11,024' WITH 349 JTS IN THE HOLE  
 PUMP 20 BBLs OF 10# BRINE WATER BREAK CIRCULATION 2ND PLUG) BALANCED PLUG FROM 11,024' - 10,696' SPOT 110 SXS CLASS H  
 11/29/2022 CMT, 23.1 BBLs, 15.6# 1.18 YIELD, COVERING 326' DISPLACE CMT TO 10,698' DISPLACE W/ 62.04 BBLs  
 11/29/2022 POOH WITH 15 STANDS LAY DOWN 10 JTS EOT @ 9764' WITH 309 JTS IN THE HOLE  
 11/29/2022 WOC TO TAG,  
 11/29/2022 RIH WITH 2-7/8" WORK STRING TUBING TAG TOC @ 10,695' WITH 339 JTS IN THE HOLE  
 11/29/2022 POOH LAY DOWN 38 JTS EOT @ 9473' WITH 301 JTS IN THE HOLE,  
 RU CEMENT PUMP ON TUBING TRY TO BREAK CIRCULATION BUT TBG PRESSURE UP TO 1500 PSI (POSSIBLE TBG PLUG WITH GREEN CMT)  
 11/29/2022 WE TRY TO REVERSE OUT WITH NO LUCK,  
 WE STARTED POOH TO CHECK TBG BHA BUT AFTER 38 STANDS OUT TUBING TONGS BROKE DOWN, NEW TONGS WILL BE ON LOCATION  
 11/29/2022 TOMORROW MORNIG  
 11/29/2022 SECURE WELL SDFN  
 11/29/2022 CREW TRAVEL BACK HOME

---

11/30/2022 CREW TRAVEL TO LOCATION  
 11/30/2022 NPT 07:00 HRS TO 12:00 HRS = 5 HRS ON AXIS ENERGY WAITING ON NEW SET OF TUBING TONGS  
 11/30/2022 HTGSM W/ ALL PERSONAL ON LOCATION  
 11/30/2022 CHECK PSI ON WELL ALL STRINGS = 0 PSI OPEN WELL

11/30/2022 CONTINUE POOH WITH 225 JTS OF 2-7/8" WORK STRING TUBING INSPECT BHA FOUND PERF SUB AND BOTTOM JT PLUG WITH CEMENT  
 11/30/2022 RIH OPEN ENDED WITH 60 STANDS OF 2-7/8" TUBING  
 11/30/2022 SECURE WELL SDFN  
 11/30/2022 CREW TRAVEL HOME.

---

12/1/2022 CREW TRAVEL TO LOCATION  
 12/1/2022 HTGSM W/ ALL PERSONAL ON LOCATION  
 12/1/2022 CHECK PSI ON WELL ALL STRINGS = 0 PSI OPEN WELL  
 12/1/2022 CONTINUE RIH WITH 2-7/8" WORK STRING TUBING EOT @ 9473' WITH 301 JTS IN THE HOLE  
 PUMP 20 BBLs OF 10# BRINE WATER BREAK CIRCULATION 3RD PLUG) BALANCED PLUG FROM 9473' - 9373' SPOT 40 SXS CLASS H CMT,  
 12/1/2022 7.5 BBLs, 16.4# 1.06 YIELD, COVERING 105' DISPLACE CMT TO 9368' DISPLACE W/ 54.3 BBLs  
 POOH WITH 15 STANDS LAY DOWN 4 JTS EOT @ 8437' WITH 267 JTS IN THE HOLE, REVERSE OUT W/ 70 BBLs TUBING CLEAR WASH UP  
 12/1/2022 PUMP & FLOW BACK PIT  
 12/1/2022 SECURE WELL SDFN  
 12/1/2022 CREW TRAVEL BACK HOME

---

12/2/2022 CREW TRAVEL TO LOCATION  
 12/2/2022 HTGSM W/ ALL PERSONAL ON LOCATION  
 12/2/2022 CHECK PSI ON WELL ALL STRINGS = 0 PSI OPEN WELL,  
 12/2/2022 RIH WITH 2-7/8" WORK STRING TUBING TAG TOC @ 9370' WITH 297 JTS IN THE HOLE  
 12/2/2022 POOH LAY DOWN 39 JTS EOT @ 8127' WITH 258 JTS IN THE HOLE  
 PUMP 20 BBLs OF 10# BRINE WATER BREAK CIRCULATION 4TH PLUG) BALANCED PLUG FROM 8127' - 7943' SPOT 70 SXS CLASS H CMT,  
 12/2/2022 13.21 BBLs, 16.4# 1.06 YIELD, COVERING 186' DISPLACE CMT TO 7941' DISPLACE W/ 46.06 BBLs  
 12/2/2022 POOH WITH 15 STANDS LAY DOWN 5 JTS EOT @ 7046' WITH 223 JTS IN THE HOLE REVERSE OUT W/ 60 BBLs TUBING CLEAR  
 12/2/2022 WOC TO TAG  
 12/2/2022 RIH WITH 2-7/8" WORK STRING TUBING TAG TOC @ 7948' WITH 253 JTS IN THE HOLE  
 12/2/2022 POOH LAY DOWN 51 JTS EOT @ 6300' WITH 202 JTS IN THE HOLE  
 PUMP 20 BBLs OF 10# BRINE WATER BREAK CIRCULATION 5TH PLUG) BALANCED PLUG FROM 6300' - 6200' SPOT 35 SXS CLASS C CMT,  
 12/2/2022 8.2 BBLs, 14.8# 1.32 YIELD, COVERING 115' DISPLACE CMT TO 6185' DISPLACE W/ 35.8 BBLs NO TAG REQUIRED  
 POOH LAY DOWN 64 JTS EOT @ 4315' WITH 138 JTS IN THE HOLE REVERSE OUT W/ 35 BBLs TUBING CLEAR WASH UP PUMP & FLOW  
 12/2/2022 BACK PIT  
 12/2/2022 SECURE WELL SDFN  
 12/2/2022 CREW TRAVEL BACK HOME.

---

12/3/2022 CREW TRAVEL TO LOCATION  
 12/3/2022 HTGSM W/ ALL PERSONAL ON LOCATION



12/3/2022 CHECK PSI ON WELL ALL STRINGS = 0 PSI OPEN WELL

12/3/2022 PUMP 20 BBLS OF 10# BRINE WATER BREAK CIRCULATION 6TH PLUG) BALANCED PLUG FROM 4315' - 3680' SPOT 215 SXS CLASS C CMT, W/ 2% CALCIUM CHLORIDE 50.54 BBLS, 14.8# 1.32 YIELD, COVERING 714' DISPLACE CMT TO 3601' DISPLACE W/ 20.08 BBLS POOH WITH 15 STANDS LAY DOWN 22 JTS EOT @ 2674' WITH 86 JTS IN THE HOLE REVERSE OUT W/ 25 BBLS TUBING CLEAR WASH UP

12/3/2022 PUMP & FLOW BACK PIT

12/3/2022 SECURE WELL SDFW

12/3/2022 CREW TRAVEL BACK HOME.

12/5/2022 CREW TRAVEL TO LOCATION

12/5/2022 NPT 06:30 HRS TO 10:00 HRS = 3.5 HRS ON AXIS ENERGY INSTALLING NEW TUBING LINE.

12/5/2022 HTGSM W/ ALL PERSONAL ON LOCATION

12/5/2022 CHECK PSI ON WELL ALL STRINGS = 0 PSI OPEN WELL,

12/5/2022 POOH LAYING DOWN 29 JTS AND STAND BACK 43 STANDS AND 1 SINGLE BREAK 4' PERF SUB

12/5/2022 PICK UP & RIH WITH 9-5/8" AD-1 PACKER SET PACKER @ 2713' WITH 87 JTS IN THE HOLE

12/5/2022 MIRU WL TO WELL PICK UP CCL 1-9/16 GUN 3.5 GRAM CHARGE .2" ENTRY HOLE 12" PENETRATION RIH TAG TOC @ 3624' PICKU UP TO 3620' SHOT 4 SQZ HOLES POOH RDMO WL

12/5/2022 RU CMT PUMP ON TBG EST- INJ RATE WITH 10# BRINE WATER 2 BPM @ 500 PSI GETTING FULL RETURNS ON INTERMEDIUM CASING CIRCULATE TOTAL OF 80 BBLS, CONTACT KENT WITH NMBLM LET HIM KNOW WHERE WE TAG TOC & INJECTION RATE, HE GIVE THE OK TO CONTINUE AS PROGRAM,

12/5/2022 7TH PLUG) PERF @ 3620' SQZ 360 SX CLASS C CMT W/ 2% CALCIUM CHLORIDE, 84.6 BBLS, 14.8# 1.32 YIELD, COVERING 1195' DISPLACE TO 3000' DISPLACE W/ 36.01 BBLS ISIP = 500 PSI WASH UP PUMP & FLOW BACK PIT

12/5/2022 SECURE WELL SDFN

12/5/2022 CREW TRAVEL BACK HOME

12/6/2022 CREW TRAVEL TO LOCATION

12/6/2022 HTGSM W/ ALL PERSONAL ON LOCATION

12/6/2022 CHECK PSI ON WELL TBG = 50 PSI, CSG = 0 PSI, INTER CSG = 0 PSI SURF CSG = 0 PSI

12/6/2022 UNSEAT 9-5/8" PACKER POOH LAY DOWN 20 JTS SET PACKER @ 2070' WITH 67 JTS IN THE HOLE

12/6/2022 MIRU WL TO WELL PICK UP CCL 1-9/16 GUN 3.5 GRAM CHARGE .2" ENTRY HOLE 12" PENETRATION RIH TAG TOC @ 2970' PICKU UP TO 2964' SHOT 4 SQZ HOLES POOH RDMO WL

12/6/2022 RU CMT PUMP ON TBG EST- INJ RATE WITH 10# BRINE WATER 1.5 BPM @ 800 PSI GETTING FULL RETURNS ON INTERMEDIUM CASING CIRCULATE TOTAL OF 20 BBLS, (NOTE: NMBLM ON LOCATION WITNESS TAG AND ALSO CMT PUMPED) 8TH PLUG) PERF @ 2964' SQZ 320 SX CLASS C CMT W/ 2% CALCIUM CHLORIDE, 75.22 BBLS, 14.8# 1.32 YIELD, COVERING 1063' DISPLACE TO 2400' DISPLACE W/ 35.35 BBLS ISIP = 800 PSI

12/6/2022 WOC TO TAG

12/6/2022 UNSEAT 9-5/8" PACKER POOH LAY DOWN 19 JTS SET PACKER @ 1485' WITH 48 JTS IN THE HOLE

12/6/2022 MIRU WL TO WELL PICK UP CCL 1-9/16 GUN 3.5 GRAM CHARGE .2" ENTRY HOLE 12" PENETRATION RIH TAG TOC @ 2410' PICKU UP TO 2400' SHOT 4 SQZ HOLES POOH RDMO WL

12/6/2022 ATTEMPT TO EST -- INJ RATE BUT WE COULDN'T BREAK CIRCULATION WE PRESSURE UP CASING TO 1500 PSI HOLDING PRESSURE FOR 15 MINUTES WITH NO LEAK OFF, CONTACTED NMBLM GOT APPROVAL TO SPOT BALANCE PLUG @ 2410' WITH 25 SXS OF CLASS C CMT W/

12/6/2022 2% CALCIUM CHLORIDE WOC TAG

12/6/2022 UNSEAT PACKER POOH WITH WORK STRING TUBING LAY DOWN 9-5/8" PACKER,

12/6/2022 RIH WITH WORK STRING TUBING OPEN ENDED EOT @ 2410' WITH 77 JTS IN THE HOLE,

12/6/2022 9TH PLUG) BALANCE PLUG 2410' TO 2327' SPOT 25 SXS CLASS C CMT, 5.87 BBLS, 14.8# 1.32 YIELD, COVERING 83' DISPLACE TO 2327' DISPLACE W/ 13.4 BBLS

12/6/2022 POOH WITH 15 STANDS LAY DOWN 3 JTS EOT @ 1368' WITH 44 JTS IN THE HOLE

12/6/2022 SECURE WELL SDFN

12/6/2022 CREW TRAVEL BACK HOME.

12/7/2022 CREW TRAVEL TO LOCATION

12/7/2022 HTGSM W/ ALL PERSONAL ON LOCATION

12/7/2022 CHECK PSI ON WELL ALL STRINGS = 0 PSI OPEN WELL

12/7/2022 POOH WITH 22 STANDS

12/7/2022 PICK UP & RIH WITH 9-5/8" 32A TENSION PACKER SET PACKER @ 1500' WITH 48 JTS IN THE HOLE

12/7/2022 MIRU WL TO WELL PICK UP CCL 1-9/16 GUN 3.5 GRAM CHARGE .2" ENTRY HOLE 12" PENETRATION RIH TAG TOC @ 2329' PICKU UP TO 2320' SHOT 4 SQZ HOLES POOH RDMO WL



12/7/2022 RU CMT PUMP ON TBG ATTEMPT TO EST -- INJ RATE BUT WE COULDN'T BREAK CIRCULATION WE PRESSURE UP CASING TO 1500 PSI HOLDING PRESSURE FOR 15 MINUTES WITH NO LEAK OFF, CONTACTED NMBLM GOT APPROVAL TO SPOT BALANCE PLUG @ 2329' WITH 30 SXS OF CLASS C CMT W/ 2% CALCIUM CHLORIDE WOC TAG

12/7/2022 UNSEAT 9-5/8" PACKER POOH WITH 32 JTS AND PACKER GOT STUCK @ 518' FROM SURFACE, WE PICK UP 2 JTS GOT PACKER TO 565' WITH 18 JTS IN THE HOLE, WE CAN GO DOWN BUT NOT UP; WE CIRCULATE THE WELL PUMPING CONVENTIONAL AND REVERSE WITH SAME NEGATIVE RESULTS, WE CONTINUE WORKING ON GETTING PACKER OUT OF THE HOLE WITH NO LUCK, (WE BELIEVE THE PROBLEM IS ONE OF THE SLIPS ON PACKER GOT OUT OF ALIGNMENT) CONTACT UPPER MANAGEMENT DECISION WAS MADE TO GET A POWER SWIVEL AND TRY TO GET PACKER OUT OF THE HOLE

12/7/2022 SECURE WELL SDFN

12/7/2022 CREW TRAVEL BACK HOME

12/8/2022 CREW TRAVEL TO LOCATION

12/8/2022 HTGSM W/ ALL PERSONAL ON LOCATION

12/8/2022 CHECK PSI ON WELL ALL STRINGS = 0 PSI OPEN WELL

12/8/2022 MIRU WELL-BORE FISHING & RENTAL 2.5 POWER SWIVEL WE ROTATE AND WORK 9-58" 32A TENSION PACKER DOWN FROM 590' TO 650' WITH POWER SWIVEL. WE KEEP LOSING HOLE. WE FINALLY GOT PACKER COMING UP HOLE WE POOH TO 450' AND PACKER GOT STUCK AT 450' WE MOVE PACKER 200' UP HOLE. WE HAVEN'T BEEN ABLE TO FREE IT UP. WE DON'T HAVE ENOUGH WEIGHT TO FREE IT UP, RD POWER SWIVEL. WE NEED TO ADD MORE WEIGHT TO PUSH PACKER DOWN HOLE OR JAR PACKER OUT (DRILL COLLARS)

12/8/2022 SECURE WELL SDFN

12/8/2022 CREW TRAVEL BACK HOME

12/9/2022 CREW TRAVEL TO LOCATION

12/9/2022 HTGSM W/ ALL PERSONAL ON LOCATION

12/9/2022 CHECK PSI ON WELL ALL STRINGS = 0 PSI OPEN WELL

12/9/2022 CONTINUE WORKING STUCK PACKER ROTATE TO THE LEFT WITH POWER SWIVEL / CONTINUED TO WORK FROM 20,000 PULL TO 0 DWN. GOT PACKER FREE GOING DOWN, TRY TO WORK PACKER BACK UP, PACKER KEEPS STICKING @ 450' IN THE SAME SPOT. CONTACT NMBLM ENGINEER KEITH IMMATTY AND OXY UPPER MANAGEMENT GOT THE APPROVAL TO CONTINUE AS FOLLOWS, NOTE: THE PREVIOUS TAG WAS AT 2329'. THE GO FORWARD PLAN IS TO / PUSH PACKER DOWN TO TOP OF PREVIOUS PLUG AT 2329' / TUBING TO BE CUT AT 2319' / SPOT 25SX CEMENT ON TOP. WOC AND TAG / FROM HERE, THE OPERATIONS CAN BE RESUMED TO STAGING THE PERF AND SQZS TO SURFACE. RIH W/ 44 JTS PACKER GOT STUCK @ 1368' UNABLE TO FREE PACKER / RU POWER SWIVEL, PSI CSG TO 500# & SURGE CSG. FREE UP PACKER WITH POWER SWIVEL WE LEAVE SWIVEL RIGGED UP & MAKE CONNECTIONS, WORK PACKER DOWN TO 2080' WITH 67 JTS IN HOLE. PACKER IS SETTING DOWN @ 2080' WE CIRCULATE BOTTOMS UP DID NOT SEE ANY CMT. RD POWER SWIVEL. RU WL, RIH W/ CCL, 1- SINKER BAR, LOCATE PACKER @ 2080', TAG TOC @ 2329' RD WL. RU POWER SWIVEL ROTATE ON PACKER BUT PACKER IS STUCK AT 2080' YOU CAN ROTATE PKR IN NUTRAL, PACKER WON'T GO DOWN OR UP WE PULL 80,000 AND DROP BACK TO NUTRAL WITH SAME NEGATIVE RESULTS, WE CIRCULATE THE HOLE CLEAN PUMPING CONVENTINONAL TRYING TO MOVE PACKER DOWN HOLE WITH SAME NEGATIVE RESULTS, PRESSURE UP WELL TO 500 PSI AND LEAVE PACKER IN NEUTRAL

12/9/2022 SECURE WELL SDFN

12/9/2022 CREW TRAVEL BACK HOME

12/10/2022 CREW TRAVEL TO LOCATION

12/10/2022 HTGSM W/ ALL PERSONAL ON LOCATION

12/10/2022 CHECK PSI ON WELL ALL STRINGS = 0 PSI OPEN WELL

CONTINUE WORKING STUCK PACKER ROTATE WITH POWER SWIVEL NO PROGRESS, CLOSE BOP PULL 100K ON PACKER PRESSURE CASING TO 500 PSI WAIT FOR 30 MINUTES BLEED PRESSURE, TORQUE UP PACKER & CONTINUE WORK TO FREE PACKER WITH NEGATIVE RESULTS. PACKER SET WHILE TRYING TO GET IT FREE, OPEN UNLOADER CIRCULATE DOWN TUBING UP CASING & CIRCULATE DOWN CASING UP TUBING WITH NO ISSUES. NOTE: IF WE PICK UP ON TUBING PACKER WILL SEAL OFF CASING, (CASING WILL PRESSURE UP

12/10/2022 BELOW PACKER)

12/10/2022 SECURE WELL SDFW

12/10/2022 CREW TRAVEL BACK HOME

12/12/2022 CREW TRAVEL TO LOCATION

12/12/2022 HTGSM W/ ALL PERSONAL ON LOCATION

12/12/2022 CHECK PSI ON WELL ALL STRINGS = 0 PSI OPEN WELL



CONTINUED TO ROTATE & TORQUE WITH POWER SWIVEL & WORK ON PKR TO FREE UP PKR, PULL 80K DOWN TO 0 WITH NO PROGRESS, RD POWER SWIVEL LD TOP JT OF TBG, PU 10' X 2-7/8" TBG SUB, SET PKR PUMP DOWN CSG, CSG COMMUNICATES WITH TBG. RELEASE PKR & RESET PKR, PSI DWN CSG, CSG STILL COMMUNICATES WITH TBG, PUMP DOWN TBG, TBG COMMUNICATES WITH CSG, RU POWER SWIVEL ROATATE ON PKR TRY TO SEAL OFF PKR. PRESSURE UP CSG TO 320 PSI CSG IS HOLDING, RD POWER SWIVEL. MIRU WL TO WELL PICK UP CCL 1-9/16 GUN 3.5 GRAM CHARGE .2" ENTRY HOLE 12" PENETRATION WENT DOWN & SET DOWN @ 2275' WE LOST 54' OF HOLE WAIT FOR APPROVAL TO PERF, CONTACT NMBLM ENGINEER KEITH IMMATTY AND OXY UPPER MANAGEMENT GOT THE APPROVAL TO CONTINUE AS FOLLOWS RE-ATTEMPT 15' HIGHER IS OK PERF@ 2260' / PLEASE ADJUST VOLUMES (AND CONSIDER SHUT IN AFTER DISPLACEMENT) TO ENSURE TUBING HAS MINIMAL CEMENT AFTER DISPLACEMENT TO ACCOMMODATE THE CUT ABOVE PACKER.NMBLM ROY CAFFALL (KENT) FIELD REPRESENTATIVE ON LOCATION WITNESS PERF @ INJECTION RATE PICK UP TO 2260' SHOT 4 SQZ HOLES POOH RDMO WL, RU CMT PUMP ON TBG ATTEMPT TO EST -- INJ RATE BUT WE COULDN'T BREAK CIRCULATION WE PRESSURE UP CASING TO 1500 PSI HOLDING PRESSURE FOR 15 MINUTES WITH NO LEAK OFF, CONTACT OXY UPPER MANAGEMENT DECISION WAS MADE TO JAR PACKER LOOSE AND POOH / NMBLM ENGINEER KEITH IMMATTY APPROVED PLAN FWD. RU POWER

12/12/2022 SWIVEL & RELEASE 32A PKR RD POWER SWIVEL

12/12/2022 SECURE WELL SDFN

12/12/2022 CREW TRAVEL BACK HOME

12/13/2022 CREW TRAVEL TO LOCATION

12/13/2022 HTGSM W/ ALL PERSONAL ON LOCATION

12/13/2022 CHECK PSI ON WELL ALL STRINGS = 0 PSI OPEN WELL

MIRU RENEGADE WL RIH FREE POIN TUBING RENEGADE WL SHOWED PKR @ 2096' BUT HE 0 AT TOP OF TBG. RIH WITH CHEMICAL

12/13/2022 CUTTER CUT TUBING AT 2060'(RWLMD) 1 JT + 5' ABOVE PKR POOH WITH CUTTING TOOL RDMO WL,

12/13/2022 POOH WITH 66 JTS CHEMICAL CUT LOOK GOOD

12/13/2022 PICK UP / MAKE UP FISHING TOOLS BHA AS FOLLOWS 5- 3/4" OVERSHOT W/ 7-1/2" GUIDE, 2-7/8" GRAPPLE, 2 - 4-1/4" BUMPER SUBS, 1 - 4-1/4" HYD JARS, 8 - 4-1/4" DRILL COLLARS, 2 - ACCELERATORS,RIH WITH 57 JTS TAG TOF @ 2060' (TMD) ENGAGE FISH START JARRING ON FISH FROM 15:30 HRS - 17:30 HRS- JAR WITH 70,000 OVER, PULL TO 80,000 AFTER JARRING, JAR UP 45 MINS NO MOVEMENT, JAR DOWN FOR 30 MINS, NO MOVEMENT. STOP JARRING DOWN SO WE DON'T CORKSCREW JT OF TUBING, CONTINUE TO

12/13/2022 JAR UP NO MOVEMENT

12/13/2022 SECURE WELL SDFN

12/13/2022 CREW TRAVEL BACK HOME

12/14/2022 CREW TRAVEL TO LOCATION

12/14/2022 HTGSM W/ ALL PERSONAL ON LOCATION

12/14/2022 CHECK PSI ON WELL ALL STRINGS = 0 PSI OPEN WELL

CONTINUE JARRING ON STUCK PACKER PULL 70,000 OVER TO JAR ON FISH. PULL 80,000 AFTER JARRING. NOTE:( PKR MANDRELL HAS SOME MOVEMENT) BUT PKR IS STILL STUCK, UNABLE TO JAR PKR UP OR DOWN. WE HAVE SAFTY THE PKR WE HAVE 3' OF MOVEMENT IN THE PKR MANDREL WE BELIVE THERE IS FILL UNDER THE BOTTOM SLIPS HOLDING THEM IN THE SET POSITION. SO, WHEN WE JAR ON PKR, WE'RE JARRING AGAINST THE SLIPS NOT THE PKR ITSELF. NOTE: THE PKR HAS THE SAFTY JT. WE HAVE HAD TO UNSCREW THE SAFTY CONNECTION BECAUSE WE HAVE THAT EXTRA TRAVEL IN THE PKR. WHEN YOU SAFTY THE A32 PKR YOU DON'T RELEASE YOURSELF LIKE AN AD1 PKR. YOU FREE THE MANDREL SO THE SLIP CAGE WILL FALL IN NEUTRAL. CIRCULATED 200 BBLS 10# BRINE WATER 4 BPM JAR ON PIPE WHILE CIRCULATING. PKR STILL STUCK. WE STILL HAVE THAT 3' ON TRAVEL. MIX 15 GALLONS FLEX / GEL WITH 14.5 BBLS OF 10# BRINE WATER FLUSH WITH 10 BBLS BRINE SPOT ACROSS PKR, JAR ON PKR, JAR PKR FREE. POOH & LD 2 JTS TBG. PKR HAD SLIGHT DRAG

12/14/2022 THRU CASING COULPLING

12/14/2022 SECURE WELL SDFN

12/14/2022 CREW TRAVEL BACK HOME

12/15/2022 CREW TRAVEL TO LOCATION

12/15/2022 HTGSM W/ ALL PERSONAL ON LOCATION

12/15/2022 CHECK PSI ON WELL ALL STRINGS = 0 PSI OPEN WELL



WE POOH WITH 1 JT TBG, PACKER HANGING UP ON CASING COUPLING, WE ROTATE TUBING WITH PIPE WRENCHES UNABLE TO PAST CASING COUPLING, RU POWER SWIVEL & PUMP BRINE WATER DOWN TUBING UP CASING 4 BPM @ 500 PSI, TURN TORQUE DOWN TO 700 PSI ON SWIVEL ROTATE TUBING TO THE RIGHT @ 10 RPM, WE THOUGHT PACKER CAME FREE, RD POWER SWIVEL POOH WITH 8 JTS OF TBG AND WE DID NOT FEEL PACKER DRAGGING ANYMORE (OVERSHOT GOT RELEASE), RIH WITH 10 JTS TBG 57 JTS TOTAL IN THE HOLE WE ENGAGE FISH 5' HIGHER @ 2055' START JARRING ON FISH NO MOVEMENT, MIX 15 GALLONS FLEX / GEL WITH 14.5 BBLs OF 10# BRINE WATER FLUSH WITH 10 BBLs BRINE SPOT ACROSS PKR START JARRING WHILE PUMPING GEL WITH NO MOVEMENT SO FAR, CONTINUE JARRING GOT PACKER FREE AGAING, POOH WITH 3 JTS TBG PACKER HANGING UP ON CASING COUPLING (SAME CASING COUPLING FROM THIS MORNING), ROTATE WITH WRENCHES TO THE LEFT & BOUNCE PACKER, BUT PACKER IS NOT PASSING THROUGH CASING COUPLING, JARS ARE NOT COCKED, RIH WITH 3 JTS TBG SET 2000# WEIGHT DOWN TO COCKED JARS, PICK UP ON TUBING PACKER IS STUCK WE CONTINUE JARRING UP & DOWN WITH NO MOVEMENT, CONTACT OXY UPPER MANAGEMENT DECISION WAS

12/15/2022 MADE TO POOH WITH JARS AND RIH WITH WASH PIPE AND WASH OVER PACKER

12/15/2022 SECURE WELL SDFN

12/15/2022 CREW TRAVEL BACK HOME

12/16/2022 CREW TRAVEL TO LOCATION

12/16/2022 HTGSM W/ ALL PERSONAL ON LOCATION

12/16/2022 CHECK PSI ON WELL ALL STRINGS = 0 PSI OPEN WELL

MIRU RU ROOSTER WL RIH WITH CCL 1-3/4" CHEMICAL CUTTER LOCATE TOP OF PACKER @ 2096' CUT TUBING @ 2091' LEAVE 5' OF TUBING ABOVE PACKER POOH WITH CUTTING TOOL RDMO WL, POOH WITH 56 JTS, 5-3/4" OVERSHOT / BHA, RECOVER 5' CUT & 25' CUT OF 2-7/8" TUBING, LEAVE 5' OF TUBING ON TOP OF 9-5/8" 32A PACKER MAKE UP / PICK UP SHOE BHA AS FOLLOWS 8-5/16" SMOOTH OD, 7-1/16" ROUGH ID, KUTRITE SHOE, 2 - 6' X 8-1/18" WASH PIPE PUP JTS, TOP BUSHING, XOVER / XOVER (RR) 4-1/4" JARS, 8 - 4-1/4" DRILL COLLARS 4' X 2-7/8" TBG SUB RIH WITH 58 JTS OF 2-7/8" L-80 WORK STRING, NU 11" X 3K SPOOL, RU BIW & POWER SWIVEL,

12/16/2022 LEAVE SHOE SWINGING @ 2089'

12/16/2022 SECURE WELL SDFN

12/16/2022 CREW TRAVEL BACK HOME

12/16/2022 CREW TRAVEL TO LOCATION

12/17/2022 HTGSM W/ ALL PERSONAL ON LOCATION

12/17/2022 CHECK PSI ON WELL ALL STRINGS = 0 PSI OPEN WELL

BREAK CIRCULATION START MILLING OVER PACKER @ 2096', MILL 7 INCHES TOTAL SHOE IS IN MIDDLE OF DRAG BLOCK ASSEMBLY, PICK UP SHOE TO 2086'

12/17/2022 SECURE WELL & SDFW

12/17/2022 CREW TRAVEL BACK HOME

12/19/2022 CREW TRAVEL TO LOCATION

12/19/2022 HTGSM W/ ALL PERSONAL ON LOCATION

12/19/2022 CHECK PSI ON WELL ALL STRINGS = 0 PSI OPEN WELL

CONTINUE WASHING OVER 9-5/8" PACKER MILL 3 INCHES TOTAL FOR THE DAY, NOTE: CUTTING IN THE DRAG BLOCK SECTION, THE DRAG BLOCKS HAVE CARBIDE INSERTS. TOTAL MILLED 10 INCHES ON PACKER. START RUNNING 6,000# WEIGHT ON SHOE FROM 14:00 TO 16:30 HOURS TO FINISH THE SHOE OFF. GETTING FINE METAL CUTTING ONLY SHOE IS WORE OUT, RIG DOWN POWER SWIVEL, NIPPLE

12/19/2022 DOWN 11" X 3K SPOOL & BIW. PREP RIG TO POOH WITH SHOE FIRST AM.

12/19/2022 SECURE WELL SDFN

12/19/2022 CREW TRAVEL BACK HOME

12/20/2022 CREW TRAVEL TO LOCATION

12/20/2022 HTGSM W/ ALL PERSONAL ON LOCATION

12/20/2022 CHECK PSI ON WELL ALL STRINGS = 0 PSI OPEN WELL,

POOH W/ 58 JTS 2 7/8" TBG, 8 5/16" OD KR SHOE/BHA. BOTTOM OF SHOE WAS SMOOTH, ID WAS STILL GOOD, UNABLE TO SEE WHERE THE FISH WAS INSIDE OF SHOE, RIH W/ #2- NEW 8 5/16" SMOOTH OD SHOE, ROUGH BOTTOM, 7 1/6" ROUGH ID SHOE, 12- 8 1/8" WP EXT'S, RR) 4 1/4" JARS, 8- 4 1/8" DC'S, 58 JTS TBG, RU 11" X 3000 SPOOL, BIW, RU SWIVEL W/ JT #59, START MILLING @ 2096'+, RUN

12/20/2022 2,000 WT, 80 RPM. CUT 3" TOTAL. PU SHOE TO 2089'.

12/20/2022 SECURE WELL. SDFN

12/20/2022 CREW TRAVEL BACK HOME

12/21/2022 CREW TRAVEL TO LOCATION

12/21/2022 HTGSM W/ ALL PERSONAL ON LOCATION

12/21/2022 CHECK PSI ON WELL ALL STRINGS = 0 PSI OPEN WELL



CONTINUE MILLING OVER 9-5/8" PKR. NOTE PKR IS SPINNING ON US WE ARE SPUDDING DOWN ON SHOE, RUN 80 RPM/ 2,000 WT. INCREASE RPM TO 120/ 6,000 WT ON SHOE MILL 3" TOTAL TODAY, NOTE: KEEP IN MIND WE THINK THE PKR MOVES DOWN A LITTLE, ALSO WE ARE RUNNING 120 RPM/6,000 WT, PICKING IT UP AND SPUDDING DOWN ON IT EVERY 5 MINS. WE ARE GETTING METAL SHAVINGS BACK 1" IN THE BUCKET TODAY PU SHOE TO 2089'.

12/21/2022  
12/21/2022 SECURE WELL. SDFN  
12/21/2022 CREW TRAVEL BACK HOME

12/22/2022 CREW TRAVEL TO LOCATION  
12/22/2022 HTGSM W/ ALL PERSONAL ON LOCATION  
12/22/2022 CHECK PSI ON WELL ALL STRINGS = 0 PSI OPEN WELL,

CONTINUE MILLING OVER 9-5/8" A32 PKR. MILL 1" PKR SPINNING, SPUD DWN ON SHOE WHILE MILLING. PSI CSG TO 750#. SPUD DWN ON PKR FOR 30 MINS. NO MOVEMENT.  
12/22/2022 SECURE WELL. SD FOR CHRISTMAS HOLIDAYS.  
12/22/2022 CREW TRAVEL BACK HOME

12/27/2022 CREW TRAVEL TO LOCATION  
12/27/2022 HTGSM W/ ALL PERSONAL ON LOCATION  
12/27/2022 CHECK PSI ON WELL ALL STRINGS = 0 PSI OPEN WELL

CONTINUE MILLING OVER 9-5/8" A32 PACKER @ 2096' MILL 2" GETTING FINE METAL CUTTING ONLY SHOE WORE OUT, PU SHOE TO 2089'  
12/27/2022 SECURE WELL. SDFN  
12/27/2022 CREW TRAVEL BACK HOME

12/28/2022 CREW TRAVEL TO LOCATION  
12/28/2022 HTGSM W/ ALL PERSONAL ON LOCATION  
12/28/2022 CHECK PSI ON WELL ALL STRINGS = 0 PSI OPEN WELL

RIG DOWN POWER SWIVEL, NIPPLE DOWN 11" X 3K SPOOL, POOH W/ 58 JTS 2-7/8" TBG, 8 5/16" OD KR SHOE/BHA BOTTOM OF SHOE WAS WORE OUT SHOE SHOWED WARE 12" INSIDE, PICK UP / MAKE UP FISHING TOOLS BHA AS FOLLOWS 5- 3/4" OVERSHOT W/ 7-1/2" GUIDE, NEW 2-7/8" GRAPPLE, 2 - 4-1/4" BUMPER SUBS, 1 - 4-1/4" HYD JARS, 8 - 4-1/4" DRILL COLLARS, 2 - ACCELERATORS, RIH WITH 57 JTS TAG TOF @ 2085' (TMD) ENGAGE FISH START JARRING ON PACKER GOT PACKER FREE POOH SLOW PACKER HANGING UP EVERY CASING COLLAR, JAR & WORK PACKER UP HOLE 10 JTS TO 1770'

12/28/2022 SECURE WELL SDFN  
12/28/2022 CREW TRAVEL BACK HOME

12/29/2022 CREW TRAVEL TO LOCATION  
12/29/2022 HTGSM W/ ALL PERSONAL ON LOCATION  
12/29/2022 CHECK PSI ON WELL ALL STRINGS = 0 PSI OPEN WELL

WE STARTED WORKING PACKER @ 1770' FIRST THING THIS MORNING, WE PUMP 75 BBLS FLEX GEL. WORK PACKER UP HOLE ONE JT TO 1740'. PACKER HANGING UP EVERY TIME WE PICK UP. WE'RE TURNING 1/4 TURN TO THE LEFT WHILE GOING DOWN, CHASE PACKER DOWN TO 1792'. THE PACKER GOT STUCK UP AND DOWN @1780', WE JARRED ON PACKER FOR 30 MINS NO MOVEMENT. PACKER STARTED MOVING DOWN AGAIN. WE WERE @ 1792' DEPTH. WORKING PACKER 1/4 TURN TO THE LEFT 1/4 TURN TO THE RIGHT GOING DOWN. WE COULDN'T FIND A PATTERN YET TO GET PACKER OUT, RU SWIVEL, PUMP DOWN TBG UP CASING 3.5 BPM @ 400 PSI WELL CIRCULATES GOOD AS SOON AS WE PICK UP PACKER SEALS OFF, TUBING PRESSURES UP BELOW PACKER, CONTINUE WORKING PACKER WE COULDN'T COME UP HOLE, PACKER CONTINUES TO SET IN TENSTION, RIH WITH 9 JTS TOTAL, (57JTS), PACKER STOPPED @ 2096', SAME PLACE AS LAST TIME, WE BEEN SPUDDING DOWN ON IT AND HAVEN'T MOVED IT DOWN ANY DEEPER IT SEEMS TO BE SAME AS BEFORE. WE PUMPED 50 MORE BBLS GEL. WE CONTINUE WORKING ON IT WITH SAME NEGATIVE RESULTS, NOTE: @ 17:00 HRS. WE STARTED MOVING UP HOLE AGAIN IS HANGING UP EVERY CASING COLLAR, JAR & WORK PACKER UP WE PULL 6 JTS TO 1910' -> RUN OUT OF DAY LIGHT

12/29/2022  
12/29/2022 SECURE WELL SDFN  
12/29/2022 CREW TRAVEL BACK HOME

12/30/2022 CREW TRAVEL TO LOCATION  
12/30/2022 HTGSM W/ ALL PERSONAL ON LOCATION  
12/30/2022 CHECK PSI ON WELL ALL STRINGS = 0 PSI OPEN WELL



CONTINUE TO WORK PKR OUT OF HOLE. POOH W/ 2 JTS TBG TO 1848' +, PKR HANGING UP IN CSG COLLAR, TURN 1/4 TURNS TO WORK THROUGH SPOT, PKR STARTED SETTING EVERY TIME WE COME UP, RIH W/ 8 JTS, 57 TOTAL. RU 11" X 3K SPOOL & BIW. RU SWIVEL ON JT #58 CIRC WELL DOWN TBG UP CSG 4 BPM @ 500 PSI TAG W/ PKR @ 2096', SPUD DOWN W/ PKR. MOVE PKR DOWN 3' PKR STOP MOVING, TOP OF PKR @ 2099'. CONTINUE TO SPUD DOWN ON PKR & CIRCULATE WELL. PKR STOP MOVING DOWN. PKR STUCK. START JARRING UP ON PKR, JAR 1HR ON PKR @ 2099'. JAR PKR FREE. POOH W/ 9 1/2 JTS TOTAL TO 1790' (48 JTS IN HOLE) PKR SET ON US @ 1790'. COULD NOT GO UP OR DOWN. WORK TO RELEASE PKR, RIH W/ 1/2 JT. LEAVE PKR @ 1800'

12/30/2022 SECURE WELL SHUT DOWN FOR NEW YEARS. PREP TO RU POWER SWIVEL TUESDAY AND WORK ON PKR  
12/30/2022 CREW TRAVEL BACK HOME

1/3/2023 CREW TRAVEL TO LOCATION

1/3/2023 HTGSM SAFETY STAND DOWN W/ ALL PERSONAL ON LOCATION

1/3/2023 CHECK PSI ON WELL ALL STRINGS = 0 PSI OPEN WELL,

RU POWER SWIVEL. START PULLING OUT OF HOLE AT RIG IDLE ONLY. PACKER SETS AT CSG COLLARS DROP DOWN FREE, TURN PIPE 1/4 TURN TO LEFT TO KEEP PACKER IN RELEASE POSITION CONTINUE TO IDLE OUT OF HOLE, WE LAY DOWN THIS MORNING 21 JTS PLUS THE 9 JTS WE LAY DOWN FRIDAY = 30 JTS LAY DOWN, BEST WE HAVE DONE SO FAR, PACKER STARTED DRAGGING PIPE JUMPED FREE WE LOST 10,000 WT TUBING IS FREE. NOTE: WE STILL GOT IN THE HOLE A TOTAL OF 27 JTS + BHA. PACKER AT 1150', I DID NOT WANT TO GO DOWN I DECIDED TO POOH AND SEE WHAT WE GOT. RD POWER SWIVEL AND 11" X 3K SPOOL, POOH WITH 19 JTS OF 2-7/8" L-80 WORK STRING TUBING. TBG UNSCREWED OUT OF A TBG COUPLING, RECOVER A 2-7/8" EUE PIN LOOKING DOWN, LEAVE 8 JTS ON TOP OF BHA. NOTE: SINCE PACKER WAS DRAGGING AT 1150' BEFORE PIPE JUMPED FREE, WE BELIEVE PACKER IS STILL AROUND 1150' -> RUN

1/3/2023 KILL STRING,

1/3/2023 TO AVOID WAITING TIME ON SCREW IN ASSEMBLE TO BE BUILT WE SECURE WELL. SDFN

1/3/2023 CREW TRAVEL BACK HOME

1/4/2023 CREW TRAVEL TO LOCATION

1/4/2023 HTGSM W/ ALL PERSONAL ON LOCATION

1/4/2023 CHECK PSI ON WELL ALL STRINGS = 0 PSI OPEN WELL

INSPECT NEW FISHING BHA, RIH WITH 7" X 2-7/8" EUE SCREW-IN ASSEMBLY, 49 JTS OF 2-7/8" TUBING, NOTE: TORQUE TUBING COUPLINGS 1/2 TURN IN LOW GEAR AFTER MAKE UP IN HIGH GEAR, SCREW IN TOF @ 1532' RU POWER SWIVEL MIX & PUMP 80 BBLs BRINE WATER WITH 5-GALS SOAP, START PULLING OUT OF HOLE AT RIG IDLE ONLY PACKER WOULD HANG IN CASING COLLARS, DROP BACK DOWN & TURN PIPE 1/4 TURN WITH SWIVEL AND WORK PKR THRU COLLAR. NOTE: EVERY 5 JTS PULL 20K OVER & TIGHTEN TBG TO THE RIGHT WITH OUT RELEASEING OVERSHOT, POOH WITH 49 JTS LAY DOWN 7" X 2-7/8" EUE SCREW-IN ASSEMBLY, CONTINUE PULLING OUT OF HOLE AT RIG IDLE ONLY AND WORKING PIPE WITH POWER SWIVEL, PACKER HUNG UP IN CASING COLLAR @ 450' & 411', ROTATE AND WORK PACKER FREE, ROTATE PKR 1/4 TURN AND DROP DOWN, TOOK 1 HR TO GET PAST THOSE TWO SPOTS. PUMP 40 BBLs OF SOAP WATER, POOH WITH 7 MORE JTS FOR A TOTAL OF 56 JTS OUT, LEAVE PACKER SWINGING @ 349'. LEAVE 1 JT OF TBG &

1/4/2023 BHA IN HOLE. UNABLE TO GET OUT BEFORE DARK

1/4/2023 SECURE WELL SDFN

1/4/2023 CREW TRAVEL BACK HOME

1/5/2023 CREW TRAVEL TO LOCATION

1/5/2023 HTGSM W/ ALL PERSONAL ON LOCATION

1/5/2023 CHECK PSI ON WELL ALL STRINGS = 0 PSI OPEN WELL

RU POWER SWIVEL CONTINUE WORK PACKER FREE THRU CASING COLLARS, POOH LAY DOWN 1 JT TUBING, 2 - 4-1/4" ENERG/ACC'S, 8 - 4-1/8" DRILL COLLARS, 4-1/4" JARS, 2 - 4-1/4" BUMPER SUBS, 5-3/4" OVERSHOT. RECOVER 5' CUT JT OF TUBING, 9-5/8" A32 PACKER, NOTE: ONE SLIP WAS BROKE OFF, SLIP HOUSING WAS BROKE ON ONE SIDE OF HOUSEING, BREAK DOWN ALL FISHING TOOLS & PREP FOR HOT SHOT TO PICK UP, RD POWER SWIVEL & REVERSE UNIT, RELEASE WELL BORE FISHING, (NOTE: NMBLM ON LOCATION WITNESS

1/5/2023 PACKER OUT OF THE HOLE PER NMBLM WE WILL RIH TAG TOC AND THEN DECIDE HOW MANY SACKS WE WILL SPOT)

1/5/2023 SECURE WELL SDFN

1/5/2023 CREW TRAVEL BACK HOME

1/6/2023 CREW TRAVEL TO LOCATION

1/6/2023 HTGSM W/ ALL PERSONAL ON LOCATION

1/6/2023 CHECK PSI ON WELL ALL STRINGS = 0 PSI OPEN WELL

1/6/2023 CREW DID HOUSE KEEPING ON WORK FLOOR AND AROUND WELL,

PICK UP 4' X 2-7/8" PERF SUB RIH PICKING UP 75 JTS OF 2-7/8" WORK STRING TUBING TAG TOC @ 2329' (TMD) WITH 15' OUT ON JT# 75  
1/6/2023 IN THE HOLE LAY DOWN 1 JT EOT @ 2329' WITH 74 JTS IN THE HOLE, CONTACT NMBLM DECISION WAS MADE TO SPOT 30 SXS CMT



RU CEMENT PUMP CIRCULATE BOTTOMS UP WITH 150 BBLs OF 10# BRINE WATER 10TH PLUG) BALANCE PLUG FROM 2329' - 2230' SPOT  
1/6/2023 30 SXS CLASS C CMT W/ 2% CALCIUM CHLORIDE 7.05 BBLs, 14.8# 1.32 YIELD, COVERING 99' DISPLACE TO 2230' DISPLACE W/ 12.9 BBLs  
1/6/2023 POOH WITH 35 STANDS LAY DOWN 4 JTS  
1/6/2023 WOC TO TAG  
RIH TAG TOC @ 2200' (TMD) WITH 71 JTS IN THE HOLE, NMBLM ON LOCATION WITNESS TAG AND GIVE THE APPROVAL TO CONTINUE AS  
1/6/2023 FOLLOWS PERF @ 2190' & SQZ 310 SXS CMT TO @ 869' WOC-TAG  
1/6/2023 POOH WITH 35 STANDS  
1/6/2023 SECURE WELL SDFN  
1/6/2023 CREW TRAVEL BACK HOME

---

1/7/2023 CREW TRAVEL TO LOCATION  
1/7/2023 HTGSM W/ ALL PERSONAL ON LOCATION,  
1/7/2023 CHECK PSI ON WELL ALL STRINGS = 0 PSI OPEN WELL,

1/7/2023 PICK UP 9-5/8" PACKER SET PACKER @ 94' WITH 3 JTS IN THE HOLE, LOAD BACK SIDE TEST PACKER TO 500 PSI WITH A GOOD TEST  
MIRU WL TO WELL PICK UP CCL 1-9/16 GUN 3.5 GRAM CHARGE .2" ENTRY HOLE 12" PENETRATION RIH TO 2190' SHOT 4 SQZ HOLES  
1/7/2023 POOH RDMO WL

RU CMT PUMP ON TBG ATTEMPT TO EST -- INJ RATE BUT WE COULDN'T BREAK CIRCULATION WE PRESSURE UP CASING TO 1500 PSI  
HOLDING PRESSURE FOR 30 MINUTES WITH NO LEAK OFF, BLEED OFF PRESSURE RU PUMP ON THE 13-3/8" INTERMEDIUM CASING LOAD  
CASING WITH 1 BBL PRESSURE UP TO 1500 PSI HOLDING PRESSURE FOR 15 MINUTES WITH NO LEAK OFF, CONTACTED KENT WITH  
1/7/2023 NMBLM GOT APPROVAL TO SPOT BALANCE PLUG @ 2200' WITH 35 SXS OF CLASS C CMT W/ 2% CALCIUM CHLORIDE WOC TAG  
1/7/2023 UNSEAT PACKER POOH LAY DOWN 9-5/8" PACKER  
1/7/2023 PICK UP 4' X 2-7/8" PERF SUB RIH WITH 70 JTS OF 2-7/8" WORK STRING TUBING EOT @ 2200'  
RU CEMENT PUMP ON TUBING BREAK CIRCULATION WITH 20 BBLs OF 10# BRINE WATER 11TH PLUG) BALANCE PLUG FROM 2200' -  
2084' SPOT 35 SXS CLASS C CMT W/ 2% CALCIUM CHLORIDE 8.22 BBLs, 14.8# 1.32 YIELD, COVERING 116' DISPLACE TO 2084' DISPLACE W/  
1/7/2023 12.08 BBLs  
1/7/2023 POOH WITH 35 STANDS  
1/7/2023 SECURE WELL SDFW  
1/7/2023 CREW TRAVEL BACK HOME

---

1/9/2023 CREW TRAVEL TO LOCATION  
1/9/2023 HTGSM W/ ALL PERSONAL ON LOCATION  
1/9/2023 CHECK PSI ON WELL ALL STRINGS = 0 PSI OPEN WELL  
1/9/2023 PICK UP & RIH WITH 9-5/8" AD-1 PACKER SET PACKER @ 94' WITH 3 JTS IN THE HOLE  
MIRU WL TO WELL PICK UP CCL 1-9/16 GUN 3.5 GRAM CHARGE .2" ENTRY HOLE 12" PENETRATION RIH TAG TOC @ 2072' PICKU UP TO  
1/9/2023 2060' SHOT 4 SQZ HOLES POOH RDMO WL

RU CMT PUMP ON TBG ATTEMPT TO EST -- INJ RATE BUT WE COULDN'T BREAK CIRCULATION WE PRESSURE UP CASING TO 1500 PSI  
HOLDING PRESSURE FOR 30 MINUTES WITH NO LEAK OFF, BLEED OFF PRESSURE RU PUMP ON THE 13-3/8" INTERMEDIUM CASING  
PRESSURE UP TO 1500 PSI HOLDING PRESSURE FOR 15 MINUTES WITH NO LEAK OFF, NOTE: MR. KENT WITH NMBLM ON LOCATION  
WITNESS TAG AND GIVE THE APPROVAL TO PERF @ 2060' AND WITNESS ATTEMPT TO EST -- INJ RATE BLM RECOMMENDED TO RUN A  
1/9/2023 CBL TO MAKE SURE WE KNOW TOC FOR NEXT PERFS / COLD CALL AXIS ENERGY TO RUN CBL,  
1/9/2023 POOH LD PACKER  
NPT 12:00 HRS TO 15:00 HRS = 3 HRS ON AXIS ENERGY WAITING ON EQUIPMENT WL COMPUTER NOT COMMUNICATING WITH CBL  
TOOLS, CBL TOOLS ARRIVED AT LOCATION AT 12: 00 HRS BUT THEY COULDN'T GET THE WL COMPUTER TO COMMUNICATE WITH CBL  
TOOLS WL OPERATOR SWAP COMPUTERS AND CBL TOOLS ARE NOT COMMUNICATING TO COMPUTER, CONTACT AXIS WL PUSHER HE  
1/9/2023 WILL BE SENDING ANOTHER TRUCK TOMORROW MORNING TO RUN CBL,  
1/9/2023 SECURE WELL SDFN  
1/9/2023 CREW TRAVEL BACK HOME

---

1/10/2023 CREW TRAVEL TO LOCATION  
1/10/2023 HTGSM W/ ALL PERSONAL ON LOCATION  
1/10/2023 CHECK PSI ON WELL ALL STRINGS = 0 PSI OPEN WELL



MIRU AXIS WL MAKU UP CBL LOGGING TOOLS FILL HOLE WITH 30 BBLs OF 10# BRINE WATER RIH WITH WL RUN A CBL FROM 2072' TO SURFACE (FOUND NO CEMENT FROM 2072' - SURFACE) LAY DOWN CBL LOGGING TOOLS, NOTE: MR. KENT WITH NMBLM ON LOCATION  
 1/10/2023 WITNESS CBL RUN AND GIVE THE APPROVAL TO RE-PERFORATE 9-5/8" CSG @ 2060' AND TRY TO GET INJECTION RATE  
 1/10/2023 PICK UP & RIH WITH 9-5/8" AD-1 PACKER SET PACKER @ 94' WITH 3 JTS IN THE HOLE  
 1/10/2023 RU WL TO WELL PICK UP CCL 1-9/16 GUN 3.2 GRAM CHARGE 0.23" ENTRY HOLE 6.62" PENETRATION WENT DOWN TO 2060' AND SHOT 4 SQZ HOLES POOH RDMO WL

RU CMT PUMP ON TBG ATTEMPT TO EST -- INJ RATE BUT WE COULDN'T BREAK CIRCULATION WE PRESSURE UP CASING TO 1800 PSI HOLDING PRESSURE FOR 30 MINUTES WITH NO LEAK OFF, BLEED OFF PRESSURE RU PUMP ON THE 13-3/8" INTERMEDIUM CASING PRESSURE UP TO 1500 PSI HOLDING PRESSURE FOR 15 MINUTES WITH NO LEAK OFF, WE SURGE WELL MULTIPLE TIMES WITH SAME NEGATIVE RESULTS, CONTACT UPPER MANAGEMENT CAME TO A CONCLUSION THAT WE NEED BIGGER GUNS TO PENETRATE ONLY THE  
 1/10/2023 9-5/8" CSG, CALL RENEGADE WL TO BRING DIFFERENT GUNS TOMORROW MORNING,  
 1/10/2023 SECURE WELL SDFN  
 1/10/2023 CREW TRAVEL BACK HOME

1/11/2023 CREW TRAVEL TO LOCATION  
 1/11/2023 HTGSM W/ ALL PERSONAL ON LOCATION  
 1/11/2023 CHECK PSI ON WELL ALL STRINGS = 0 PSI OPEN WELL

MIRU RENEGADE WL TO WELL RENEGADE USED 1-9/16" RTG CARRIER WITH OWEN CORE LAB CHARGES PAC-1562-457 CHARGE WITH A SPEC OF .28 ENTRY HOLE AND 5/8"-3/4" OF PENETRATION WENT DOWN TO 2060' AND SHOT 4 SQZ HOLES POOH RDMO WL  
 1/11/2023 RU CMT PUMP ON TBG EST- INJ RATE CIRCULATE BOTTOMS UP WITH 200 BBLs WITH 10# BRINE WATER 1.5 BPM @ 2500 PSI, GETTING RETURNS ON INTERMEDIUM CASING START SEEING SAND ON RETURNS AFTER 140 BBLs GONE, RETURNS CLEAN UP AT 190 BBLs INJECTION RATE DROPPED ONLY 300 PSI TO 2200 PSI, NOTE: CONTACT MR. KENT WITH NMBLM GIVE THE APPROVAL TO RE-PERFORATE  
 1/11/2023 9-5/8" CSG @ 2058' AND TRY TO GET BETTER INJECTION RATE,  
 1/11/2023 MIRU WL TO WELL RIH WITH 1-9/16" RTG CARRIER WITH OWEN CORE LAB CHARGES PAC-1562-457 CHARGE WITH A SPEC OF .28 ENTRY HOLE AND 5/8"-3/4" OF PENETRATION WENT DOWN TO 2058' AND SHOT 4 SQZ HOLES POOH RDMO WL  
 1/11/2023 RU CMT PUMP ON TBG EST- INJ RATE WITH 10# BRINE WATER 2 BPM @ 600 PSI GETTING FULL RETURNS ON INTERMEDIUM CASING CIRCULATE TOTAL OF 20 BBLs, CONTACT MR. KENT WITH NMBLM LET HIM KNOW INJECTION RATE HE GIVE THE OK TO CONTINUE AS  
 1/11/2023 PROGRAM  
 12TH PLUG) PERF @ 2060' SQZ 310 SX CLASS C CMT W/ 2% CALCIUM CHLORIDE, 72.8 BBLs, 14.8# 1.32 YIELD, COVERING 1029' DISPLACE  
 1/11/2023 TO 1510' DISPLACE W/ 100.7 BBLs ISIP = 1000 PSI WASH UP PUMP & FLOW BACK PIT  
 1/11/2023 SECURE WELL SDFN  
 1/11/2023 CREW TRAVEL BACK HOME

1/12/2023 CREW TRAVEL TO LOCATION  
 1/12/2023 HTGSM W/ ALL PERSONAL ON LOCATION  
 1/12/2023 CHECK PSI ON WELL TBG = 200 PSI, INTER CSG = 0 PSI SURF CSG = 0 PSI BLEED OFF PRESSURE OPEN WELL

MIRU RENEGADE WL PICK UP CCL 1-9/16" RTG CARRIER WITH OWEN CORE LAB CHARGES PAC-1562-457 CHARGE WITH A SPEC OF .28 ENTRY HOLE AND 5/8"-3/4" OF PENETRATION RIH TAG TOC @ 1412' PICKU UP TO 1400' SHOT 5 SQZ HOLES POOH RDMO WL, NOTE:  
 1/12/2023 CONTACT MR. KENT WITH NMBLM GIVE THE APPROVAL TO PERFORATE @ 1400'  
 1/12/2023 RU CMT PUMP ON TBG EST- INJ RATE WITH 10# BRINE WATER 2 BPM @ 600 PSI GETTING FULL RETURNS ON INTERMEDIUM CASING PUMP AHEAD 20 BBLs, 13TH PLUG) PERF @ 1400' SQZ 310 SX CLASS C CMT W/ 2% CALCIUM CHLORIDE, 72.8 BBLs, 14.8# 1.32 YIELD, COVERING 1029' DISPLACE TO 850' DISPLACE W/ 54 BBLs ISIP = 500 PSI  
 1/12/2023 WOC TO TAG

MIRU RENEGADE WL PICK UP CCL 1-9/16" RTG CARRIER WITH OWEN CORE LAB CHARGES PAC-1562-457 CHARGE WITH A SPEC OF .28 ENTRY HOLE AND 5/8"-3/4" OF PENETRATION RIH TAG TOC @ 845' PICKU UP TO 835' SHOT 5 SQZ HOLES POOH RDMO WL, NOTE:  
 1/12/2023 CONTACT MR. KENT WITH NMBLM GIVE THE APPROVAL TO PERFORATE @ 835'  
 1/12/2023 RU CMT PUMP ON TBG EST- INJ RATE WITH 10# BRINE WATER 2 BPM @ 500 PSI GETTING FULL RETURNS ON INTERMEDIUM CASING PUMP AHEAD 20 BBLs 14TH PLUG) PERF @ 835' SQZ 310 SX CLASS C CMT W/ 2% CALCIUM CHLORIDE, 72.8 BBLs, 14.8# 1.32 YIELD, COVERING 1029' DISPLACE TO 285' DISPLACE W/ 14 BBLs ISIP = 500 PSI, WASH UP PUMP & FLOW BACK PIT  
 1/12/2023 SECURE WELL SDFN  
 1/12/2023 CREW TRAVEL BACK HOME

1/13/2023 CREW TRAVEL TO LOCATION  
 1/13/2023 HTGSM W/ ALL PERSONAL ON LOCATION

1/13/2023 CHECK PSI ON WELL ALL STRINGS = 0 PSI OPEN WELL

MIRU RENEGADE WL PICK UP CCL 1-9/16" RTG CARRIER WITH OWEN CORE LAB CHARGES PAC-1562-457 CHARGE WITH A SPEC OF .28 ENTRY HOLE AND 5/8"-3/4" OF PENETRATION RIH TAG TOC @ 290' PICKU UP TO 280' SHOT 5 SQZ HOLES POOH RDMO WL, NOTE:

1/13/2023 CONTACT MR. KENT WITH NMBLM GIVE THE APPROVAL TO PERFORATE @ 280'

RU CMT PUMP ON TBG EST- INJ RATE WITH 10# BRINE WATER 2 BPM @ 800 PSI GETTING FULL RETURNS ON INTERMEDIUM CASING

1/13/2023 CIRCULATE TOTAL OF 40 BBLS,

1/13/2023 UNSEAT PACKER POOH LAY DOWN 3 JTS AND PACKER, RIH WITH 4 STANDS, POOH LAY DOWN 8 JTS

1/13/2023 RD WORK FLOOR & ASSOCIATED EQUIPMENT

1/13/2023 ND 3K X 11" HYD BOP ND 3K X 11" SPOOL

1/13/2023 NU 11" X 10K WELL HEAD FLANGE

RU CMT PUMP ON 9-5/8" PRODUCTION CASING BREAK CIRCULATION WITH 10 BBLS OF 10# BRINE WATER 15TH PLUG) PERF @ 280' SQZ 170 SXS CLASS C CMT W/ 2% CALCIUM CHLORIDE, 39.9 BBLS, 14.8# 1.32 YIELD, COVERING 564' FROM 280' - 0' (SURFACE) GOT FULL RETURNS ON INTERMEDIUM CASING CLOSE VALVE AND LEFT 500 PSI ON PRODUCTION CASING, WOC TOP OFF HOLE WITH CMT VERIFY

1/13/2023 CMT AT SURFACE

RDMO PU & P&A PUMP ASSOCIATED EQUIPMENT, STAGED ALL P&A EQUIPMENT TO SIDE OF LOCATION, CLEAN UP LOCATION P&A JOB

1/13/2023 COMPLETED

1/13/2023 CREW TRAVEL BACK HOME



**Sundance Federal #1 P&A**

Start Date	Remarks
11/19/2022	CREW TRAVEL TO LOCATION
11/19/2022	DROVE PULLING UNIT & P&A PUMP ASSOCIATED EQUIPMENT FROM THE SUNDANCE 10 FEDERAL 001 TO THE SUNDANCE FEDERAL 001 HPJSM WITH ALL PERSONAL ON LOCATION DISCUSS STOP WORK AUTHORITY GOOD COMMUNICATION AT ALL TIME SUSPENDED LOADS
11/19/2022	ONE TASK AT A TIME PINCH POINTS HAND PLACEMENT UPDATE JSA AS TASK CHANGES
11/19/2022	MIRU PU & P&A ASSOCIATED EQUIPMENT SET CATWALK & PIPE RACKS LOAD WORK STRING TUBING
11/19/2022	CHECK PSI ON WELL CSG = 1200 PSI DIG OUT CELLAR INTER CSG = 150 PSI SURF CSG = 0 PSI
11/19/2022	SECURE WELL SDFW
11/19/2022	CREW TRAVEL BACK HOME
11/21/2022	CREW TRAVEL TO LOCATION
11/21/2022	HTGSM W/ ALL PERSONAL ON LOCATION
11/21/2022	CHECK PSI ON WELL PROD CSG = 1200 PSI INTER CSG = 150 PSI SURF CSG = 0 PSI
11/21/2022	RIG UP STEEL LINE TO FLOW BACK TANK BLEED OFF GAS HEAD FROM CASING TO 150 PSI BULL HEAD KILL WELL PUMPING 300 BBLS OF
11/21/2022	10# BRINE WATER DOWN CASING FOR WELL CONTROL MONITOR WELL FOR 30 MINUTES WELL STATIC
11/21/2022	FUNCTION TEST BOP WITH A GOOD TEST
11/21/2022	ND 11" X 10K WH
11/21/2022	NU 3K X 11" SPOOL, NU 3K X 11" HYD BOP W/ 3K 2-7/8" PIPE RAMS ON TOP AND 3K BLINDS ON BOTTOM
11/21/2022	RU WORK FLOOR WITH 2-7/8" TUBING HANDLING TOOLS, SET UP SAFETY EQUIPMENT CENTER & LEVEL RIG OVER HOLE
11/21/2022	TALLY 200 JTS OF 2-7/8" WORK STRING TUBING, RIH PICKING UP 80 JTS OF 2-7/8" WORK STRING TUBING OPEN ENDED
11/21/2022	SECURE WELL SDFN
11/21/2022	CREW TRAVEL BACK HOME.
11/22/2022	CREW TRAVEL TO LOCATION
11/22/2022	HTGSM W/ ALL PERSONAL ON LOCATION
11/22/2022	CHECK PSI ON WELL PROD CSG = 40 PSI INTER CSG = 0 PSI SURF CSG = 0 PSI OPEN WELL PUMP 100 BBLS OF 10# BRINE WATER DOWN
11/22/2022	CASING FOR WELL CONTROL
11/22/2022	CONTINUE RIH PICKING UP 300 JTS OF 2-7/8" WORK STRING TUBING EOT @ 12,020' WITH 380 JTS IN THE HOLE
11/22/2022	POOH WITH 150 STANDS LEFT IN THE HOLE 80 JTS FOR KILL STRING EOT @ 2530'
11/22/2022	SECURE WELL SDFN
11/22/2022	CREW TRAVEL BACK HOME
11/23/2022	CREW TRAVEL TO LOCATION
11/23/2022	HTGSM W/ ALL PERSONAL ON LOCATION
11/23/2022	CHECK PSI ON WELL ALL STRINGS = 0 PSI OPEN WELL PUMP 70 BBLS OF 10# BRINE WATER DOWN CASING FOR WELL CONTROL
11/23/2022	POOH WITH 80 JTS OF 2-7/8" WORK STRING TUBING
11/23/2022	MIRU RENEGADE WL RIH W/ 8.25" GR/JB TO @ 12,030" (WMD) POOH W/ GR/JB, PICK UP 9-5/8" CIBP RIH W/ WL SET CIBP @ 12,020'
11/23/2022	WITH NO ISSUES POOH WITH WL SETTING TOOL RDMO WL
11/23/2022	RIH WITH 80 JTS OF 2-7/8" WORK STRING TUBING FOR KILL STRING EOT @ 2530'
11/23/2022	SECURE WELL SDFW
11/23/2022	CREW TRAVEL BACK HOME
11/28/2022	CREW TRAVEL TO LOCATION
11/28/2022	HTGSM W/ ALL PERSONAL ON LOCATION
11/28/2022	CHECK PSI ON WELL ALL STRINGS = 0 PSI OPEN WELL PUMP 70 BBLS OF 10# BRINE WATER DOWN CASING FOR WELL CONTROL
11/28/2022	CONTINUE RIH WITH 2-7/8" WORK STRING TUBING TAG 9-5/8" CIBP @ 12,020' WITH 380 JTS IN THE HOLE
11/28/2022	RU CEMENT PUMP CIRCULATE WELL WITH 850 BBLS OF 10# BRINE WATER MIX 97.6 GALLONS OF FLEX & GEL WITH 488 BBLS OF 10#
11/28/2022	BRINE WATER
11/28/2022	PRESSURE TEST CASING TO 500 PSI HOLD PRESSURE FOR 30 MINUTES WITH A GOOD TEST
11/28/2022	1ST PLUG) BALANCED PLUG FROM 12,020' - 11,920' SPOT 35 SXS CLASS H CMT, 7.35 BBLS, 15.6# 1.18 YIELD, COVERING 103' DISPLACE
11/28/2022	CMT TO 11,917' DISPLACE W/ 69.1 BBLS
11/28/2022	POOH WITH 15 STANDS LAY DOWN 3 JTS EOT @ 10,965' WITH 347 JTS IN THE HOLE
11/28/2022	SECURE WELL SDFN
11/28/2022	CREW TRAVEL BACK HOME
11/29/2022	CREW TRAVEL TO LOCATION

11/29/2022 HTGSM W/ ALL PERSONAL ON LOCATION  
 11/29/2022 CHECK PSI ON WELL ALL STRINGS = 0 PSI OPEN WELL  
 11/29/2022 RIH WITH 2-7/8" WORK STRING TUBING TAG TOC @ 11,905' WITH 377 JTS IN THE HOLE  
 11/29/2022 POOH LAY DOWN 28 JTS EOT @ 11,024' WITH 349 JTS IN THE HOLE  
 PUMP 20 BBLS OF 10# BRINE WATER BREAK CIRCULATION 2ND PLUG) BALANCED PLUG FROM 11,024' - 10,696' SPOT 110 SXS CLASS H CMT, 23.1 BBLS, 15.6# 1.18 YIELD, COVERING 326' DISPLACE CMT TO 10,698' DISPLACE W/ 62.04 BBLS  
 11/29/2022 POOH WITH 15 STANDS LAY DOWN 10 JTS EOT @ 9764' WITH 309 JTS IN THE HOLE  
 11/29/2022 WOC TO TAG,  
 11/29/2022 RIH WITH 2-7/8" WORK STRING TUBING TAG TOC @ 10,695' WITH 339 JTS IN THE HOLE  
 11/29/2022 POOH LAY DOWN 38 JTS EOT @ 9473' WITH 301 JTS IN THE HOLE,  
 RU CEMENT PUMP ON TUBING TRY TO BREAK CIRCULATION BUT TBG PRESSURE UP TO 1500 PSI (POSSIBLE TBG PLUG WITH GREEN CMT)  
 11/29/2022 WE TRY TO REVERSE OUT WITH NO LUCK,  
 WE STARTED POOH TO CHECK TBG BHA BUT AFTER 38 STANDS OUT TUBING TONGS BROKE DOWN, NEW TONGS WILL BE ON LOCATION  
 11/29/2022 TOMORROW MORNIG  
 11/29/2022 SECURE WELL SDFN  
 11/29/2022 CREW TRAVEL BACK HOME

---

11/30/2022 CREW TRAVEL TO LOCATION  
 11/30/2022 NPT 07:00 HRS TO 12:00 HRS = 5 HRS ON AXIS ENERGY WAITING ON NEW SET OF TUBING TONGS  
 11/30/2022 HTGSM W/ ALL PERSONAL ON LOCATION  
 11/30/2022 CHECK PSI ON WELL ALL STRINGS = 0 PSI OPEN WELL

11/30/2022 CONTINUE POOH WITH 225 JTS OF 2-7/8" WORK STRING TUBING INSPECT BHA FOUND PERF SUB AND BOTTOM JT PLUG WITH CEMENT  
 11/30/2022 RIH OPEN ENDED WITH 60 STANDS OF 2-7/8" TUBING  
 11/30/2022 SECURE WELL SDFN  
 11/30/2022 CREW TRAVEL HOME.

---

12/1/2022 CREW TRAVEL TO LOCATION  
 12/1/2022 HTGSM W/ ALL PERSONAL ON LOCATION  
 12/1/2022 CHECK PSI ON WELL ALL STRINGS = 0 PSI OPEN WELL  
 12/1/2022 CONTINUE RIH WITH 2-7/8" WORK STRING TUBING EOT @ 9473' WITH 301 JTS IN THE HOLE  
 PUMP 20 BBLS OF 10# BRINE WATER BREAK CIRCULATION 3RD PLUG) BALANCED PLUG FROM 9473' - 9373' SPOT 40 SXS CLASS H CMT, 7.5 BBLS, 16.4# 1.06 YIELD, COVERING 105' DISPLACE CMT TO 9368' DISPLACE W/ 54.3 BBLS  
 12/1/2022 POOH WITH 15 STANDS LAY DOWN 4 JTS EOT @ 8437' WITH 267 JTS IN THE HOLE, REVERSE OUT W/ 70 BBLS TUBING CLEAR WASH UP  
 12/1/2022 PUMP & FLOW BACK PIT  
 12/1/2022 SECURE WELL SDFN  
 12/1/2022 CREW TRAVEL BACK HOME

---

12/2/2022 CREW TRAVEL TO LOCATION  
 12/2/2022 HTGSM W/ ALL PERSONAL ON LOCATION  
 12/2/2022 CHECK PSI ON WELL ALL STRINGS = 0 PSI OPEN WELL,  
 12/2/2022 RIH WITH 2-7/8" WORK STRING TUBING TAG TOC @ 9370' WITH 297 JTS IN THE HOLE  
 12/2/2022 POOH LAY DOWN 39 JTS EOT @ 8127' WITH 258 JTS IN THE HOLE  
 PUMP 20 BBLS OF 10# BRINE WATER BREAK CIRCULATION 4TH PLUG) BALANCED PLUG FROM 8127' - 7943' SPOT 70 SXS CLASS H CMT, 13.21 BBLS, 16.4# 1.06 YIELD, COVERING 186' DISPLACE CMT TO 7941' DISPLACE W/ 46.06 BBLS  
 12/2/2022 POOH WITH 15 STANDS LAY DOWN 5 JTS EOT @ 7046' WITH 223 JTS IN THE HOLE REVERSE OUT W/ 60 BBLS TUBING CLEAR  
 12/2/2022 WOC TO TAG  
 12/2/2022 RIH WITH 2-7/8" WORK STRING TUBING TAG TOC @ 7948' WITH 253 JTS IN THE HOLE  
 12/2/2022 POOH LAY DOWN 51 JTS EOT @ 6300' WITH 202 JTS IN THE HOLE  
 PUMP 20 BBLS OF 10# BRINE WATER BREAK CIRCULATION 5TH PLUG) BALANCED PLUG FROM 6300' - 6200' SPOT 35 SXS CLASS C CMT, 8.2 BBLS, 14.8# 1.32 YIELD, COVERING 115' DISPLACE CMT TO 6185' DISPLACE W/ 35.8 BBLS NO TAG REQUIRED  
 12/2/2022 POOH LAY DOWN 64 JTS EOT @ 4315' WITH 138 JTS IN THE HOLE REVERSE OUT W/ 35 BBLS TUBING CLEAR WASH UP PUMP & FLOW  
 12/2/2022 BACK PIT  
 12/2/2022 SECURE WELL SDFN  
 12/2/2022 CREW TRAVEL BACK HOME.

---

12/3/2022 CREW TRAVEL TO LOCATION  
 12/3/2022 HTGSM W/ ALL PERSONAL ON LOCATION



12/3/2022 CHECK PSI ON WELL ALL STRINGS = 0 PSI OPEN WELL

12/3/2022 PUMP 20 BBLS OF 10# BRINE WATER BREAK CIRCULATION 6TH PLUG) BALANCED PLUG FROM 4315' - 3680' SPOT 215 SXS CLASS C CMT, W/ 2% CALCIUM CHLORIDE 50.54 BBLS, 14.8# 1.32 YIELD, COVERING 714' DISPLACE CMT TO 3601' DISPLACE W/ 20.08 BBLS  
POOH WITH 15 STANDS LAY DOWN 22 JTS EOT @ 2674' WITH 86 JTS IN THE HOLE REVERSE OUT W/ 25 BBLS TUBING CLEAR WASH UP  
12/3/2022 PUMP & FLOW BACK PIT  
12/3/2022 SECURE WELL SDFW  
12/3/2022 CREW TRAVEL BACK HOME.

12/5/2022 CREW TRAVEL TO LOCATION

12/5/2022 NPT 06:30 HRS TO 10:00 HRS = 3.5 HRS ON AXIS ENERGY INSTALLING NEW TUBING LINE.

12/5/2022 HTGSM W/ ALL PERSONAL ON LOCATION

12/5/2022 CHECK PSI ON WELL ALL STRINGS = 0 PSI OPEN WELL,

12/5/2022 POOH LAYING DOWN 29 JTS AND STAND BACK 43 STANDS AND 1 SINGLE BREAK 4' PERF SUB

12/5/2022 PICK UP & RIH WITH 9-5/8" AD-1 PACKER SET PACKER @ 2713' WITH 87 JTS IN THE HOLE

12/5/2022 MIRU WL TO WELL PICK UP CCL 1-9/16 GUN 3.5 GRAM CHARGE .2" ENTRY HOLE 12" PENETRATION RIH TAG TOC @ 3624' PICKU UP TO 3620' SHOT 4 SQZ HOLES POOH RDMO WL

RU CMT PUMP ON TBG EST- INJ RATE WITH 10# BRINE WATER 2 BPM @ 500 PSI GETTING FULL RETURNS ON INTERMEDIUM CASING CIRCULATE TOTAL OF 80 BBLS, CONTACT KENT WITH NMBLM LET HIM KNOW WHERE WE TAG TOC & INJECTION RATE, HE GIVE THE OK TO CONTINUE AS PROGRAM,

12/5/2022 7TH PLUG) PERF @ 3620' SQZ 360 SX CLASS C CMT W/ 2% CALCIUM CHLORIDE, 84.6 BBLS, 14.8# 1.32 YIELD, COVERING 1195' DISPLACE TO 3000' DISPLACE W/ 36.01 BBLS ISIP = 500 PSI WASH UP PUMP & FLOW BACK PIT

12/5/2022 SECURE WELL SDFN

12/5/2022 CREW TRAVEL BACK HOME

12/6/2022 CREW TRAVEL TO LOCATION

12/6/2022 HTGSM W/ ALL PERSONAL ON LOCATION

12/6/2022 CHECK PSI ON WELL TBG = 50 PSI, CSG = 0 PSI, INTER CSG = 0 PSI SURF CSG = 0 PSI

12/6/2022 UNSEAT 9-5/8" PACKER POOH LAY DOWN 20 JTS SET PACKER @ 2070' WITH 67 JTS IN THE HOLE

12/6/2022 MIRU WL TO WELL PICK UP CCL 1-9/16 GUN 3.5 GRAM CHARGE .2" ENTRY HOLE 12" PENETRATION RIH TAG TOC @ 2970' PICKU UP TO 2964' SHOT 4 SQZ HOLES POOH RDMO WL

RU CMT PUMP ON TBG EST- INJ RATE WITH 10# BRINE WATER 1.5 BPM @ 800 PSI GETTING FULL RETURNS ON INTERMEDIUM CASING CIRCULATE TOTAL OF 20 BBLS, (NOTE: NMBLM ON LOCATION WITNESS TAG AND ALSO CMT PUMPED) 8TH PLUG) PERF @ 2964' SQZ 320 SX CLASS C CMT W/ 2% CALCIUM CHLORIDE, 75.22 BBLS, 14.8# 1.32 YIELD, COVERING 1063' DISPLACE TO 2400' DISPLACE W/ 35.35 BBLS ISIP = 800 PSI

12/6/2022 WOC TO TAG

12/6/2022 UNSEAT 9-5/8" PACKER POOH LAY DOWN 19 JTS SET PACKER @ 1485' WITH 48 JTS IN THE HOLE

12/6/2022 MIRU WL TO WELL PICK UP CCL 1-9/16 GUN 3.5 GRAM CHARGE .2" ENTRY HOLE 12" PENETRATION RIH TAG TOC @ 2410' PICKU UP TO 2400' SHOT 4 SQZ HOLES POOH RDMO WL

ATTEMPT TO EST -- INJ RATE BUT WE COULDN'T BREAK CIRCULATION WE PRESSURE UP CASING TO 1500 PSI HOLDING PRESSURE FOR 15 MINUTES WITH NO LEAK OFF, CONTACTED NMBLM GOT APPROVAL TO SPOT BALANCE PLUG @ 2410' WITH 25 SXS OF CLASS C CMT W/

12/6/2022 2% CALCIUM CHLORIDE WOC TAG

12/6/2022 UNSEAT PACKER POOH WITH WORK STRING TUBING LAY DOWN 9-5/8" PACKER,

12/6/2022 RIH WITH WORK STRING TUBING OPEN ENDED EOT @ 2410' WITH 77 JTS IN THE HOLE,

12/6/2022 9TH PLUG) BALANCE PLUG 2410' TO 2327' SPOT 25 SXS CLASS C CMT, 5.87 BBLS, 14.8# 1.32 YIELD, COVERING 83' DISPLACE TO 2327' DISPLACE W/ 13.4 BBLS

12/6/2022 POOH WITH 15 STANDS LAY DOWN 3 JTS EOT @ 1368' WITH 44 JTS IN THE HOLE

12/6/2022 SECURE WELL SDFN

12/6/2022 CREW TRAVEL BACK HOME.

12/7/2022 CREW TRAVEL TO LOCATION

12/7/2022 HTGSM W/ ALL PERSONAL ON LOCATION

12/7/2022 CHECK PSI ON WELL ALL STRINGS = 0 PSI OPEN WELL

12/7/2022 POOH WITH 22 STANDS

12/7/2022 PICK UP & RIH WITH 9-5/8" 32A TENSION PACKER SET PACKER @ 1500' WITH 48 JTS IN THE HOLE

12/7/2022 MIRU WL TO WELL PICK UP CCL 1-9/16 GUN 3.5 GRAM CHARGE .2" ENTRY HOLE 12" PENETRATION RIH TAG TOC @ 2329' PICKU UP TO 2320' SHOT 4 SQZ HOLES POOH RDMO WL

12/7/2022 RU CMT PUMP ON TBG ATTEMPT TO EST -- INJ RATE BUT WE COULDN'T BREAK CIRCULATION WE PRESSURE UP CASING TO 1500 PSI HOLDING PRESSURE FOR 15 MINUTES WITH NO LEAK OFF, CONTACTED NMBLM GOT APPROVAL TO SPOT BALANCE PLUG @ 2329' WITH 30 SXS OF CLASS C CMT W/ 2% CALCIUM CHLORIDE WOC TAG

12/7/2022 UNSEAT 9-5/8" PACKER POOH WITH 32 JTS AND PACKER GOT STUCK @ 518' FROM SURFACE, WE PICK UP 2 JTS GOT PACKER TO 565' WITH 18 JTS IN THE HOLE, WE CAN GO DOWN BUT NOT UP; WE CIRCULATE THE WELL PUMPING CONVENTIONAL AND REVERSE WITH SAME NEGATIVE RESULTS, WE CONTINUE WORKING ON GETTING PACKER OUT OF THE HOLE WITH NO LUCK, (WE BELIEVE THE PROBLEM IS ONE OF THE SLIPS ON PACKER GOT OUT OF ALIGNMENT) CONTACT UPPER MANAGEMENT DECISION WAS MADE TO GET A POWER SWIVEL AND TRY TO GET PACKER OUT OF THE HOLE

12/7/2022 SECURE WELL SDFN

12/7/2022 CREW TRAVEL BACK HOME

12/8/2022 CREW TRAVEL TO LOCATION

12/8/2022 HTGSM W/ ALL PERSONAL ON LOCATION

12/8/2022 CHECK PSI ON WELL ALL STRINGS = 0 PSI OPEN WELL

12/8/2022 MIRU WELL-BORE FISHING & RENTAL 2.5 POWER SWIVEL WE ROTATE AND WORK 9-5/8" 32A TENSION PACKER DOWN FROM 590' TO 650' WITH POWER SWIVEL. WE KEEP LOSING HOLE. WE FINALLY GOT PACKER COMING UP HOLE WE POOH TO 450' AND PACKER GOT STUCK AT 450' WE MOVE PACKER 200' UP HOLE. WE HAVEN'T BEEN ABLE TO FREE IT UP. WE DON'T HAVE ENOUGH WEIGHT TO FREE IT UP, RD POWER SWIVEL. WE NEED TO ADD MORE WEIGHT TO PUSH PACKER DOWN HOLE OR JAR PACKER OUT (DRILL COLLARS)

12/8/2022 SECURE WELL SDFN

12/8/2022 CREW TRAVEL BACK HOME

12/9/2022 CREW TRAVEL TO LOCATION

12/9/2022 HTGSM W/ ALL PERSONAL ON LOCATION

12/9/2022 CHECK PSI ON WELL ALL STRINGS = 0 PSI OPEN WELL

12/9/2022 CONTINUE WORKING STUCK PACKER ROTATE TO THE LEFT WITH POWER SWIVEL / CONTINUED TO WORK FROM 20,000 PULL TO 0 DWN. GOT PACKER FREE GOING DOWN, TRY TO WORK PACKER BACK UP, PACKER KEEPS STICKING @ 450' IN THE SAME SPOT. CONTACT NMBLM ENGINEER KEITH IMMATTY AND OXY UPPER MANAGEMENT GOT THE APPROVAL TO CONTINUE AS FOLLOWS, NOTE: THE PREVIOUS TAG WAS AT 2329'. THE GO FORWARD PLAN IS TO / PUSH PACKER DOWN TO TOP OF PREVIOUS PLUG AT 2329' / TUBING TO BE CUT AT 2319' / SPOT 25SX CEMENT ON TOP. WOC AND TAG / FROM HERE, THE OPERATIONS CAN BE RESUMED TO STAGING THE PERF AND SQZS TO SURFACE. RIH W/ 44 JTS PACKER GOT STUCK @ 1368' UNABLE TO FREE PACKER / RU POWER SWIVEL, PSI CSG TO 500# & SURGE CSG. FREE UP PACKER WITH POWER SWIVEL WE LEAVE SWIVEL RIGGED UP & MAKE CONNECTIONS, WORK PACKER DOWN TO 2080' - WITH 67 JTS IN HOLE. PACKER IS SETTING DOWN @ 2080' WE CIRCULATE BOTTOMS UP DID NOT SEE ANY CMT. RD POWER SWIVEL. RU WL, RIH W/ CCL, 1- SINKER BAR, LOCATE PACKER @ 2080', TAG TOC @ 2329' RD WL. RU POWER SWIVEL ROTATE ON PACKER BUT PACKER IS STUCK AT 2080' YOU CAN ROTATE PKR IN NUTRAL, PACKER WON'T GO DOWN OR UP WE PULL 80,000 AND DROP BACK TO NUTRAL WITH SAME NEGATIVE RESULTS, WE CIRCULATE THE HOLE CLEAN PUMPING CONVENTINONAL TRYING TO MOVE PACKER DOWN HOLE WITH SAME NEGATIVE RESULTS, PRESSURE UP WELL TO 500 PSI AND LEAVE PACKER IN NEUTRAL

12/9/2022 SECURE WELL SDFN

12/9/2022 CREW TRAVEL BACK HOME

12/10/2022 CREW TRAVEL TO LOCATION

12/10/2022 HTGSM W/ ALL PERSONAL ON LOCATION

12/10/2022 CHECK PSI ON WELL ALL STRINGS = 0 PSI OPEN WELL

CONTINUE WORKING STUCK PACKER ROTATE WITH POWER SWIVEL NO PROGRESS, CLOSE BOP PULL 100K ON PACKER PRESSURE CASING TO 500 PSI WAIT FOR 30 MINUTES BLEED PRESSURE, TORQUE UP PACKER & CONTINUE WORK TO FREE PACKER WITH NEGATIVE RESULTS. PACKER SET WHILE TRYING TO GET IT FREE, OPEN UNLOADER CIRCULATE DOWN TUBING UP CASING & CIRCULATE DOWN CASING UP TUBING WITH NO ISSUES. NOTE: IF WE PICK UP ON TUBING PACKER WILL SEAL OFF CASING, (CASING WILL PRESSURE UP

12/10/2022 BELOW PACKER)

12/10/2022 SECURE WELL SDFW

12/10/2022 CREW TRAVEL BACK HOME

12/12/2022 CREW TRAVEL TO LOCATION

12/12/2022 HTGSM W/ ALL PERSONAL ON LOCATION

12/12/2022 CHECK PSI ON WELL ALL STRINGS = 0 PSI OPEN WELL



CONTINUED TO ROTATE & TORQUE WITH POWER SWIVEL & WORK ON PKR TO FREE UP PKR, PULL 80K DOWN TO 0 WITH NO PROGRESS, RD POWER SWIVEL LD TOP JT OF TBG, PU 10' X 2-7/8" TBG SUB, SET PKR PUMP DOWN CSG, CSG COMMUNICATES WITH TBG. RELEASE PKR & RESET PKR, PSI DWN CSG, CSG STILL COMMUNICATES WITH TBG, PUMP DOWN TBG, TBG COMMUNICATES WITH CSG, RU POWER SWIVEL ROATATE ON PKR TRY TO SEAL OFF PKR. PRESSURE UP CSG TO 320 PSI CSG IS HOLDING, RD POWER SWIVEL. MIRU WL TO WELL PICK UP CCL 1-9/16 GUN 3.5 GRAM CHARGE .2" ENTRY HOLE 12" PENETRATION WENT DOWN & SET DOWN @ 2275' WE LOST 54' OF HOLE WAIT FOR APPROVAL TO PERF, CONTACT NMBLM ENGINNER KEITH IMMATTY AND OXY UPPER MANAGEMENT GOT THE APPROVAL TO CONTINUE AS FOLLOWS RE-ATTEMPT 15' HIGHER IS OK PERF@ 2260' / PLEASE ADJUST VOLUMES (AND CONSIDER SHUT IN AFTER DISPLACEMENT) TO ENSURE TUBING HAS MINIMAL CEMENT AFTER DISPLACEMENT TO ACCOMMODATE THE CUT ABOVE PACKER.NMBLM ROY CAFFALL (KENT) FIELD REPRESENTATIVE ON LOCATION WITNESS PERF @ INJECTION RATE PICK UP TO 2260' SHOT 4 SQZ HOLES POOH RDMO WL, RU CMT PUMP ON TBG ATTEMPT TO EST -- INJ RATE BUT WE COULDN'T BREAK CIRCULATION WE PRESSURE UP CASING TO 1500 PSI HOLDING PRESSURE FOR 15 MINUTES WITH NO LEAK OFF, CONTACT OXY UPPER MANAGEMENT DECISION WAS MADE TO JAR PACKER LOOSE AND POOH / NMBLM ENGINNER KEITH IMMATTY APPROVED PLAN FWD. RU POWER SWIVEL & RELEASE 32A PKR RD POWER SWIVEL

12/12/2022

12/12/2022 SECURE WELL SDFN

12/12/2022 CREW TRAVEL BACK HOME

12/13/2022 CREW TRAVEL TO LOCATION

12/13/2022 HTGSM W/ ALL PERSONAL ON LOCATION

12/13/2022 CHECK PSI ON WELL ALL STRINGS = 0 PSI OPEN WELL

MIRU RENEGADE WL RIH FREE POIN TUBING RENEGADE WL SHOWED PKR @ 2096' BUT HE 0 AT TOP OF TBG. RIH WITH CHEMICAL

12/13/2022 CUTTER CUT TUBING AT 2060'(RWLMD) 1 JT + 5' ABOVE PKR POOH WITH CUTTING TOOL RDMO WL,

12/13/2022 POOH WITH 66 JTS CHEMICAL CUT LOOK GOOD

PICK UP / MAKE UP FISHING TOOLS BHA AS FOLLOWS 5- 3/4" OVERSHOT W/ 7-1/2" GUIDE, 2-7/8" GRAPPLE, 2 - 4-1/4" BUMPER SUBS, 1 - 4-1/4" HYD JARS, 8 - 4-1/4" DRILL COLLARS, 2 - ACCELERATORS,RIH WITH 57 JTS TAG TOF @ 2060' (TMD) ENGAGE FISH

12/13/2022

START JARRING ON FISH FROM 15:30 HRS - 17:30 HRS- JAR WITH 70,000 OVER, PULL TO 80,000 AFTER JARRING, JAR UP 45 MINS NO MOVEMENT, JAR DOWN FOR 30 MINS, NO MOVEMENT. STOP JARRING DOWN SO WE DON'T CORKSCREW JT OF TUBING, CONTINUE TO

12/13/2022 JAR UP NO MOVEMENT

12/13/2022 SECURE WELL SDFN

12/13/2022 CREW TRAVEL BACK HOME

12/14/2022 CREW TRAVEL TO LOCATION

12/14/2022 HTGSM W/ ALL PERSONAL ON LOCATION

12/14/2022 CHECK PSI ON WELL ALL STRINGS = 0 PSI OPEN WELL

CONTINUE JARRING ON STUCK PACKER PULL 70,000 OVER TO JAR ON FISH. PULL 80,000 AFTER JARRING. NOTE:( PKR MANDRELL HAS SOME MOVEMENT) BUT PKR IS STILL STUCK, UNABLE TO JAR PKR UP OR DOWN. WE HAVE SAFTY THE PKR WE HAVE 3' OF MOVEMENT IN THE PKR MANDREL WE BELIVE THERE IS FILL UNDER THE BOTTOM SLIPS HOLDING THEM IN THE SET POSITION. SO, WHEN WE JAR ON PKR, WE'RE JARRING AGAINST THE SLIPS NOT THE PKR ITSELF. NOTE: THE PKR HAS THE SAFTY JT. WE HAVE HAD TO UNSCREW THE SAFTY CONNECTION BECAUSE WE HAVE THAT EXTRA TRAVEL IN THE PKR. WHEN YOU SAFTY THE A32 PKR YOU DON'T RELEASE YOURSELF LIKE AN AD1 PKR. YOU FREE THE MANDREL SO THE SLIP CAGE WILL FALL IN NEUTRAL. CIRCULATED 200 BBLS 10# BRINE WATER 4 BPM JAR ON PIPE WHILE CIRCULATING. PKR STILL STUCK. WE STILL HAVE THAT 3' ON TRAVEL. MIX 15 GALLONS FLEX / GEL WITH 14.5 BBLS OF 10# BRINE WATER FLUSH WITH 10 BBLS BRINE SPOT ACROSS PKR, JAR ON PKR, JAR PKR FREE. POOH & LD 2 JTS TBG. PKR HAD SLIGHT DRAG

12/14/2022 THRU CASING COULPLING

12/14/2022 SECURE WELL SDFN

12/14/2022 CREW TRAVEL BACK HOME

12/15/2022 CREW TRAVEL TO LOCATION

12/15/2022 HTGSM W/ ALL PERSONAL ON LOCATION

12/15/2022 CHECK PSI ON WELL ALL STRINGS = 0 PSI OPEN WELL

WE POOH WITH 1 JT TBG, PACKER HANGING UP ON CASING COUPLING, WE ROTATE TUBING WITH PIPE WRENCHES UNABLE TO PAST CASING COUPLING, RU POWER SWIVEL & PUMP BRINE WATER DOWN TUBING UP CASING 4 BPM @ 500 PSI, TURN TORQUE DOWN TO 700 PSI ON SWIVEL ROTATE TUBING TO THE RIGHT @ 10 RPM, WE THOUGHT PACKER CAME FREE, RD POWER SWIVEL POOH WITH 8 JTS OF TBG AND WE DID NOT FEEL PACKER DRAGGING ANYMORE (OVERSHOT GOT RELEASE), RIH WITH 10 JTS TBG 57 JTS TOTAL IN THE HOLE WE ENGAGE FISH 5' HIGHER @ 2055' START JARRING ON FISH NO MOVEMENT, MIX 15 GALLONS FLEX / GEL WITH 14.5 BBLs OF 10# BRINE WATER FLUSH WITH 10 BBLs BRINE SPOT ACROSS PKR START JARRING WHILE PUMPING GEL WITH NO MOVEMENT SO FAR, CONTINUE JARRING GOT PACKER FREE AGAING, POOH WITH 3 JTS TBG PACKER HANGING UP ON CASING COUPLING (SAME CASING COUPLING FROM THIS MORNING), ROTATE WITH WRENCHES TO THE LEFT & BOUNCE PACKER, BUT PACKER IS NOT PASSING THROUGH CASING COUPLING, JARS ARE NOT COCKED, RIH WITH 3 JTS TBG SET 2000# WEIGHT DOWN TO COCKED JARS, PICK UP ON TUBING PACKER IS STUCK WE CONTINUE JARRING UP & DOWN WITH NO MOVEMENT, CONTACT OXY UPPER MANAGEMENT DECISION WAS

12/15/2022 MADE TO POOH WITH JARS AND RIH WITH WASH PIPE AND WASH OVER PACKER

12/15/2022 SECURE WELL SDFN

12/15/2022 CREW TRAVEL BACK HOME

12/16/2022 CREW TRAVEL TO LOCATION

12/16/2022 HTGSM W/ ALL PERSONAL ON LOCATION

12/16/2022 CHECK PSI ON WELL ALL STRINGS = 0 PSI OPEN WELL

MIRU RU ROOSTER WL RIH WITH CCL 1-3/4" CHEMICAL CUTTER LOCATE TOP OF PACKER @ 2096' CUT TUBING @ 2091' LEAVE 5' OF TUBING ABOVE PACKER POOH WITH CUTTING TOOL RDMO WL, POOH WITH 56 JTS, 5-3/4" OVERSHOT / BHA, RECOVER 5' CUT & 25' CUT OF 2-7/8" TUBING, LEAVE 5' OF TUBING ON TOP OF 9-5/8" 32A PACKER MAKE UP / PICK UP SHOE BHA AS FOLLOWS 8-5/16" SMOOTH OD, 7-1/16" ROUGH ID, KUTRITE SHOE, 2 - 6' X 8-1/18" WASH PIPE PUP JTS, TOP BUSHING, XOVER / XOVER (RR) 4-1/4" JARS, 8 - 4-1/4" DRILL COLLARS 4' X 2-7/8" TBG SUB RIH WITH 58 JTS OF 2-7/8" L-80 WORK STRING, NU 11" X 3K SPOOL, RU BIW & POWER SWIVEL,

12/16/2022 LEAVE SHOE SWINGING @ 2089'

12/16/2022 SECURE WELL SDFN

12/16/2022 CREW TRAVEL BACK HOME

12/16/2022 CREW TRAVEL TO LOCATION

12/17/2022 HTGSM W/ ALL PERSONAL ON LOCATION

12/17/2022 CHECK PSI ON WELL ALL STRINGS = 0 PSI OPEN WELL

BREAK CIRCULATION START MILLING OVER PACKER @ 2096', MILL 7 INCHES TOTAL SHOE IS IN MIDDLE OF DRAG BLOCK ASSEMBLY, PICK

12/17/2022 UP SHOE TO 2086'

12/17/2022 SECURE WELL & SDFW

12/17/2022 CREW TRAVEL BACK HOME

12/19/2022 CREW TRAVEL TO LOCATION

12/19/2022 HTGSM W/ ALL PERSONAL ON LOCATION

12/19/2022 CHECK PSI ON WELL ALL STRINGS = 0 PSI OPEN WELL

CONTINUE WASHING OVER 9-5/8" PACKER MILL 3 INCHES TOTAL FOR THE DAY, NOTE: CUTTING IN THE DRAG BLOCK SECTION, THE DRAG BLOCKS HAVE CARBIDE INSERTS. TOTAL MILLED 10 INCHES ON PACKER. START RUNNING 6,000# WEIGHT ON SHOE FROM 14:00 TO 16:30 HOURS TO FINISH THE SHOE OFF. GETTING FINE METAL CUTTING ONLY SHOE IS WORE OUT, RIG DOWN POWER SWIVEL, NIPPLE

12/19/2022 DOWN 11" X 3K SPOOL & BIW. PREP RIG TO POOH WITH SHOE FIRST AM.

12/19/2022 SECURE WELL SDFN

12/19/2022 CREW TRAVEL BACK HOME

12/20/2022 CREW TRAVEL TO LOCATION

12/20/2022 HTGSM W/ ALL PERSONAL ON LOCATION

12/20/2022 CHECK PSI ON WELL ALL STRINGS = 0 PSI OPEN WELL,

POOH W/ 58 JTS 2 7/8" TBG, 8 5/16" OD KR SHOE/BHA. BOTTOM OF SHOE WAS SMOOTH, ID WAS STILL GOOD, UNABLE TO SEE WHERE THE FISH WAS INSIDE OF SHOE, RIH W/ #2- NEW 8 5/16" SMOOTH OD SHOE, ROUGH BOTTOM, 7 1/6" ROUGH ID SHOE, 12- 8 1/8" WP EXT'S, RR) 4 1/4" JARS, 8- 4 1/8" DC'S, 58 JTS TBG, RU 11" X 3000 SPOOL, BIW, RU SWIVEL W/ JT #59, START MILLING @ 2096'+, RUN

12/20/2022 2,000 WT, 80 RPM. CUT 3" TOTAL. PU SHOE TO 2089'.

12/20/2022 SECURE WELL. SDFN

12/20/2022 CREW TRAVEL BACK HOME

12/21/2022 CREW TRAVEL TO LOCATION

12/21/2022 HTGSM W/ ALL PERSONAL ON LOCATION

12/21/2022 CHECK PSI ON WELL ALL STRINGS = 0 PSI OPEN WELL



CONTINUE MILLING OVER 9-5/8" PKR. NOTE PKR IS SPINNING ON US WE ARE SPUDDING DOWN ON SHOE, RUN 80 RPM/ 2,000 WT. INCREASE RPM TO 120/ 6,000 WT ON SHOE MILL 3" TOTAL TODAY, NOTE: KEEP IN MIND WE THINK THE PKR MOVES DOWN A LITTLE, ALSO WE ARE RUNNING 120 RPM/6,000 WT, PICKING IT UP AND SPUDDING DOWN ON IT EVERY 5 MINS. WE ARE GETTING METAL SHAVINGS BACK 1" IN THE BUCKET TODAY PU SHOE TO 2089'.

12/21/2022

12/21/2022 SECURE WELL. SDFN

12/21/2022 CREW TRAVEL BACK HOME

12/22/2022 CREW TRAVEL TO LOCATION

12/22/2022 HTGSM W/ ALL PERSONAL ON LOCATION

12/22/2022 CHECK PSI ON WELL ALL STRINGS = 0 PSI OPEN WELL,

CONTINUE MILLING OVER 9-5/8" A32 PKR. MILL 1" PKR SPINNING, SPUD DWN ON SHOE WHILE MILLING. PSI CSG TO 750#. SPUD DWN ON PKR FOR 30 MINS. NO MOVEMENT.

12/22/2022

12/22/2022 SECURE WELL. SD FOR CHRISTMAS HOLIDAYS.

12/22/2022 CREW TRAVEL BACK HOME

12/27/2022 CREW TRAVEL TO LOCATION

12/27/2022 HTGSM W/ ALL PERSONAL ON LOCATION

12/27/2022 CHECK PSI ON WELL ALL STRINGS = 0 PSI OPEN WELL

CONTINUE MILLING OVER 9-5/8" A32 PACKER @ 2096' MILL 2" GETTING FINE METAL CUTTING ONLY SHOE WORE OUT, PU SHOE TO 2089'

12/27/2022

12/27/2022 SECURE WELL. SDFN

12/27/2022 CREW TRAVEL BACK HOME

12/28/2022 CREW TRAVEL TO LOCATION

12/28/2022 HTGSM W/ ALL PERSONAL ON LOCATION

12/28/2022 CHECK PSI ON WELL ALL STRINGS = 0 PSI OPEN WELL

RIG DOWN POWER SWIVEL, NIPPLE DOWN 11" X 3K SPOOL, POOH W/ 58 JTS 2-7/8" TBG, 8 5/16" OD KR SHOE/BHA BOTTOM OF SHOE WAS WORE OUT SHOE SHOWED WARE 12" INSIDE, PICK UP / MAKE UP FISHING TOOLS BHA AS FOLLOWS 5- 3/4" OVERSHOT W/ 7-1/2" GUIDE, NEW 2-7/8" GRAPPLE, 2 - 4-1/4" BUMPER SUBS, 1 - 4-1/4" HYD JARS, 8 - 4-1/4" DRILL COLLARS, 2 - ACCELERATORS, RIH WITH 57 JTS TAG TOF @ 2085' (TMD) ENGAGE FISH START JARRING ON PACKER GOT PACKER FREE POOH SLOW PACKER HANGING UP EVERY CASING COLLAR, JAR & WORK PACKER UP HOLE 10 JTS TO 1770'

12/28/2022

12/28/2022 SECURE WELL SDFN

12/28/2022 CREW TRAVEL BACK HOME

12/29/2022 CREW TRAVEL TO LOCATION

12/29/2022 HTGSM W/ ALL PERSONAL ON LOCATION

12/29/2022 CHECK PSI ON WELL ALL STRINGS = 0 PSI OPEN WELL

WE STARTED WORKING PACKER @ 1770' FIRST THING THIS MORNING, WE PUMP 75 BBLS FLEX GEL. WORK PACKER UP HOLE ONE JT TO 1740'. PACKER HANGING UP EVERY TIME WE PICK UP. WE'RE TURNING 1/4 TURN TO THE LEFT WHILE GOING DOWN, CHASE PACKER DOWN TO 1792'. THE PACKER GOT STUCK UP AND DOWN @1780', WE JARRED ON PACKER FOR 30 MINS NO MOVEMENT. PACKER STARTED MOVING DOWN AGAIN. WE WERE @ 1792' DEPTH. WORKING PACKER 1/4 TURN TO THE LEFT 1/4 TURN TO THE RIGHT GOING DOWN. WE COULDN'T FIND A PATTERN YET TO GET PACKER OUT, RU SWIVEL, PUMP DOWN TBG UP CASING 3.5 BPM @ 400 PSI WELL CIRCULATES GOOD AS SOON AS WE PICK UP PACKER SEALS OFF, TUBING PRESSURES UP BELOW PACKER, CONTINUE WORKING PACKER WE COULDN'T COME UP HOLE, PACKER CONTINUES TO SET IN TENSTION, RIH WITH 9 JTS TOTAL, (57JTS), PACKER STOPPED @ 2096', SAME PLACE AS LAST TIME, WE BEEN SPUDDING DOWN ON IT AND HAVEN'T MOVED IT DOWN ANY DEEPER IT SEEMS TO BE SAME AS BEFORE. WE PUMPED 50 MORE BBLS GEL. WE CONTINUE WORKING ON IT WITH SAME NEGATIVE RESULTS, NOTE: @ 17:00 HRS. WE STARTED MOVING UP HOLE AGAIN IS HANGING UP EVERY CASING COLLAR, JAR & WORK PACKER UP WE PULL 6 JTS TO 1910' -> RUN OUT OF DAY LIGHT

12/29/2022

12/29/2022 SECURE WELL SDFN

12/29/2022 CREW TRAVEL BACK HOME

12/30/2022 CREW TRAVEL TO LOCATION

12/30/2022 HTGSM W/ ALL PERSONAL ON LOCATION

12/30/2022 CHECK PSI ON WELL ALL STRINGS = 0 PSI OPEN WELL

CONTINUE TO WORK PKR OUT OF HOLE. POOH W/ 2 JTS TBG TO 1848' +/-, PKR HANGING UP IN CSG COLLAR, TURN 1/4 TURNS TO WORK THROUGH SPOT, PKR STARTED SETTING EVERY TIME WE COME UP, RIH W/ 8 JTS, 57 TOTAL. RU 11" X 3K SPOOL & BIW. RU SWIVEL ON JT #58 CIRC WELL DOWN TBG UP CSG 4 BPM @ 500 PSI TAG W/ PKR @ 2096', SPUD DOWN W/ PKR. MOVE PKR DOWN 3' PKR STOP MOVING, TOP OF PKR @ 2099'. CONTINUE TO SPUD DOWN ON PKR & CIRCULATE WELL. PKR STOP MOVING DOWN. PKR STUCK. START JARRING UP ON PKR, JAR 1HR ON PKR @ 2099'. JAR PKR FREE. POOH W/ 9 1/2 JTS TOTAL TO 1790' (48 JTS IN HOLE) PKR SET ON US @ 1790'. COULD NOT GO UP OR DOWN. WORK TO RELEASE PKR, RIH W/ 1/2 JT. LEAVE PKR @ 1800'

12/30/2022 SECURE WELL SHUT DOWN FOR NEW YEARS. PREP TO RU POWER SWIVEL TUESDAY AND WORK ON PKR  
12/30/2022 CREW TRAVEL BACK HOME

1/3/2023 CREW TRAVEL TO LOCATION  
1/3/2023 HTGSM SAFETY STAND DOWN W/ ALL PERSONAL ON LOCATION  
1/3/2023 CHECK PSI ON WELL ALL STRINGS = 0 PSI OPEN WELL,

RU POWER SWIVEL. START PULLING OUT OF HOLE AT RIG IDLE ONLY. PACKER SETS AT CSG COLLARS DROP DOWN FREE, TURN PIPE 1/4 TURN TO LEFT TO KEEP PACKER IN RELEASE POSITION CONTINUE TO IDLE OUT OF HOLE, WE LAY DOWN THIS MORNING 21 JTS PLUS THE 9 JTS WE LAY DOWN FRIDAY = 30 JTS LAY DOWN, BEST WE HAVE DONE SO FAR, PACKER STARTED DRAGGING PIPE JUMPED FREE WE LOST 10,000 WT TUBING IS FREE. NOTE: WE STILL GOT IN THE HOLE A TOTAL OF 27 JTS + BHA. PACKER AT 1150', I DID NOT WANT TO GO DOWN I DECIDED TO POOH AND SEE WHAT WE GOT. RD POWER SWIVEL AND 11" X 3K SPOOL, POOH WITH 19 JTS OF 2-7/8" L-80 WORK STRING TUBING. TBG UNSCREWED OUT OF A TBG COUPLING, RECOVER A 2-7/8" EUE PIN LOOKING DOWN, LEAVE 8 JTS ON TOP OF BHA. NOTE: SINCE PACKER WAS DRAGGING AT 1150' BEFORE PIPE JUMPED FREE, WE BELIEVE PACKER IS STILL AROUND 1150' -> RUN

1/3/2023 KILL STRING,  
1/3/2023 TO AVOID WAITING TIME ON SCREW IN ASSEMBLE TO BE BUILT WE SECURE WELL. SDFN  
1/3/2023 CREW TRAVEL BACK HOME

1/4/2023 CREW TRAVEL TO LOCATION  
1/4/2023 HTGSM W/ ALL PERSONAL ON LOCATION  
1/4/2023 CHECK PSI ON WELL ALL STRINGS = 0 PSI OPEN WELL

INSPECT NEW FISHING BHA, RIH WITH 7" X 2-7/8" EUE SCREW-IN ASSEMBLY, 49 JTS OF 2-7/8" TUBING, NOTE: TORQUE TUBING COUPLINGS 1/2 TURN IN LOW GEAR AFTER MAKE UP IN HIGH GEAR, SCREW IN TOF @ 1532' RU POWER SWIVEL MIX & PUMP 80 BBLs BRINE WATER WITH 5-GALS SOAP, START PULLING OUT OF HOLE AT RIG IDLE ONLY PACKER WOULD HANG IN CASING COLLARS, DROP BACK DOWN & TURN PIPE 1/4 TURN WITH SWIVEL AND WORK PKR THRU COLLAR. NOTE: EVERY 5 JTS PULL 20K OVER & TIGHTEN TBG TO THE RIGHT WITH OUT RELEASEING OVERSHOT, POOH WITH 49 JTS LAY DOWN 7" X 2-7/8" EUE SCREW-IN ASSEMBLY, CONTINUE PULLING OUT OF HOLE AT RIG IDLE ONLY AND WORKING PIPE WITH POWER SWIVEL, PACKER HUNG UP IN CASING COLLAR @ 450' & 411', ROTATE AND WORK PACKER FREE, ROTATE PKR 1/4 TURN AND DROP DOWN, TOOK 1 HR TO GET PAST THOSE TWO SPOTS. PUMP 40 BBLs OF SOAP WATER, POOH WITH 7 MORE JTS FOR A TOTAL OF 56 JTS OUT, LEAVE PACKER SWINGING @ 349'. LEAVE 1 JT OF TBG &

1/4/2023 BHA IN HOLE. UNABLE TO GET OUT BEFORE DARK  
1/4/2023 SECURE WELL SDFN  
1/4/2023 CREW TRAVEL BACK HOME

1/5/2023 CREW TRAVEL TO LOCATION  
1/5/2023 HTGSM W/ ALL PERSONAL ON LOCATION  
1/5/2023 CHECK PSI ON WELL ALL STRINGS = 0 PSI OPEN WELL

RU POWER SWIVEL CONTINUE WORK PACKER FREE THRU CASING COLLARS, POOH LAY DOWN 1 JT TUBING, 2 - 4-1/4" ENERG/ACC'S, 8 - 4-1/8" DRILL COLLARS, 4-1/4" JARS, 2 - 4-1/4" BUMPER SUBS, 5-3/4" OVERSHOT. RECOVER 5' CUT JT OF TUBING, 9-5/8" A32 PACKER, NOTE: ONE SLIP WAS BROKE OFF, SLIP HOUSING WAS BROKE ON ONE SIDE OF HOUSING, BREAK DOWN ALL FISHING TOOLS & PREP FOR HOT SHOT TO PICK UP, RD POWER SWIVEL & REVERSE UNIT, RELEASE WELL BORE FISHING, (NOTE: NMBLM ON LOCATION WITNESS

1/5/2023 PACKER OUT OF THE HOLE PER NMBLM WE WILL RIH TAG TOC AND THEN DECIDE HOW MANY SACKS WE WILL SPOT)  
1/5/2023 SECURE WELL SDFN  
1/5/2023 CREW TRAVEL BACK HOME

1/6/2023 CREW TRAVEL TO LOCATION  
1/6/2023 HTGSM W/ ALL PERSONAL ON LOCATION  
1/6/2023 CHECK PSI ON WELL ALL STRINGS = 0 PSI OPEN WELL  
1/6/2023 CREW DID HOUSE KEEPING ON WORK FLOOR AND AROUND WELL,

1/6/2023 PICK UP 4' X 2-7/8" PERF SUB RIH PICKING UP 75 JTS OF 2-7/8" WORK STRING TUBING TAG TOC @ 2329' (TMD) WITH 15' OUT ON JT# 75 IN THE HOLE LAY DOWN 1 JT EOT @ 2329' WITH 74 JTS IN THE HOLE, CONTACT NMBLM DECISION WAS MADE TO SPOT 30 SXS CMT



RU CEMENT PUMP CIRCULATE BOTTOMS UP WITH 150 BBLS OF 10# BRINE WATER 10TH PLUG) BALANCE PLUG FROM 2329' - 2230' SPOT

1/6/2023 30 SXS CLASS C CMT W/ 2% CALCIUM CHLORIDE 7.05 BBLS, 14.8# 1.32 YIELD, COVERING 99' DISPLACE TO 2230' DISPLACE W/ 12.9 BBLS

1/6/2023 POOH WITH 35 STANDS LAY DOWN 4 JTS

1/6/2023 WOC TO TAG

RIH TAG TOC @ 2200' (TMD) WITH 71 JTS IN THE HOLE, NMBLM ON LOCATION WITNESS TAG AND GIVE THE APPROVAL TO CONTINUE AS

1/6/2023 FOLLOWS PERF @ 2190' & SQZ 310 SXS CMT TO @ 869' WOC-TAG

1/6/2023 POOH WITH 35 STANDS

1/6/2023 SECURE WELL SDFN

1/6/2023 CREW TRAVEL BACK HOME

---

1/7/2023 CREW TRAVEL TO LOCATION

1/7/2023 HTGSM W/ ALL PERSONAL ON LOCATION,

1/7/2023 CHECK PSI ON WELL ALL STRINGS = 0 PSI OPEN WELL,

1/7/2023 PICK UP 9-5/8" PACKER SET PACKER @ 94' WITH 3 JTS IN THE HOLE, LOAD BACK SIDE TEST PACKER TO 500 PSI WITH A GOOD TEST

MIRU WL TO WELL PICK UP CCL 1-9/16 GUN 3.5 GRAM CHARGE .2" ENTRY HOLE 12" PENETRATION RIH TO 2190' SHOT 4 SQZ HOLES

1/7/2023 POOH RDMO WL

RU CMT PUMP ON TBG ATTEMPT TO EST -- INJ RATE BUT WE COULDN'T BREAK CIRCULATION WE PRESSURE UP CASING TO 1500 PSI HOLDING PRESSURE FOR 30 MINUTES WITH NO LEAK OFF, BLEED OFF PRESSURE RU PUMP ON THE 13-3/8" INTERMEDIUM CASING LOAD CASING WITH 1 BBL PRESSURE UP TO 1500 PSI HOLDING PRESSURE FOR 15 MINUTES WITH NO LEAK OFF, CONTACTED KENT WITH

1/7/2023 NMBLM GOT APPROVAL TO SPOT BALANCE PLUG @ 2200' WITH 35 SXS OF CLASS C CMT W/ 2% CALCIUM CHLORIDE WOC TAG

1/7/2023 UNSEAT PACKER POOH LAY DOWN 9-5/8" PACKER

1/7/2023 PICK UP 4' X 2-7/8" PERF SUB RIH WITH 70 JTS OF 2-7/8" WORK STRING TUBING EOT @ 2200'

RU CEMENT PUMP ON TUBING BREAK CIRCULATION WITH 20 BBLS OF 10# BRINE WATER 11TH PLUG) BALANCE PLUG FROM 2200' - 2084' SPOT 35 SXS CLASS C CMT W/ 2% CALCIUM CHLORIDE 8.22 BBLS, 14.8# 1.32 YIELD, COVERING 116' DISPLACE TO 2084' DISPLACE W/ 12.08 BBLS

1/7/2023 12.08 BBLS

1/7/2023 POOH WITH 35 STANDS

1/7/2023 SECURE WELL SDFW

1/7/2023 CREW TRAVEL BACK HOME

---

1/9/2023 CREW TRAVEL TO LOCATION

1/9/2023 HTGSM W/ ALL PERSONAL ON LOCATION

1/9/2023 CHECK PSI ON WELL ALL STRINGS = 0 PSI OPEN WELL

1/9/2023 PICK UP & RIH WITH 9-5/8" AD-1 PACKER SET PACKER @ 94' WITH 3 JTS IN THE HOLE

MIRU WL TO WELL PICK UP CCL 1-9/16 GUN 3.5 GRAM CHARGE .2" ENTRY HOLE 12" PENETRATION RIH TAG TOC @ 2072' PICKU UP TO 2060' SHOT 4 SQZ HOLES POOH RDMO WL

1/9/2023 2060' SHOT 4 SQZ HOLES POOH RDMO WL

RU CMT PUMP ON TBG ATTEMPT TO EST -- INJ RATE BUT WE COULDN'T BREAK CIRCULATION WE PRESSURE UP CASING TO 1500 PSI HOLDING PRESSURE FOR 30 MINUTES WITH NO LEAK OFF, BLEED OFF PRESSURE RU PUMP ON THE 13-3/8" INTERMEDIUM CASING PRESSURE UP TO 1500 PSI HOLDING PRESSURE FOR 15 MINUTES WITH NO LEAK OFF, NOTE: MR. KENT WITH NMBLM ON LOCATION WITNESS TAG AND GIVE THE APPROVAL TO PERF @ 2060' AND WITNESS ATTEMPT TO EST -- INJ RATE BLM RECOMMENDED TO RUN A

1/9/2023 CBL TO MAKE SURE WE KNOW TOC FOR NEXT PERFS / COLD CALL AXIS ENERGY TO RUN CBL,

1/9/2023 POOH LD PACKER

NPT 12:00 HRS TO 15:00 HRS = 3 HRS ON AXIS ENERGY WAITING ON EQUIPMENT WL COMPUTER NOT COMMUNICATING WITH CBL TOOLS, CBL TOOLS ARRIVED AT LOCATION AT 12: 00 HRS BUT THEY COULDN'T GET THE WL COMPUTER TO COMMUNICATE WITH CBL TOOLS WL OPERATOR SWAP COMPUTERS AND CBL TOOLS ARE NOT COMMUNICATING TO COMPUTER, CONTACT AXIS WL PUSHER HE

1/9/2023 WILL BE SENDING ANOTHER TRUCK TOMORROW MORNING TO RUN CBL,

1/9/2023 SECURE WELL SDFN

1/9/2023 CREW TRAVEL BACK HOME

---

1/10/2023 CREW TRAVEL TO LOCATION

1/10/2023 HTGSM W/ ALL PERSONAL ON LOCATION

1/10/2023 CHECK PSI ON WELL ALL STRINGS = 0 PSI OPEN WELL

MIRU AXIS WL MAKU UP CBL LOGGING TOOLS FILL HOLE WITH 30 BBLS OF 10# BRINE WATER RIH WITH WL RUN A CBL FROM 2072' TO SURFACE (FOUND NO CEMENT FROM 2072' - SURFACE) LAY DOWN CBL LOGGING TOOLS, NOTE: MR. KENT WITH NMBLM ON LOCATION

1/10/2023 WITNESS CBL RUN AND GIVE THE APPROVAL TO RE-PERFORATE 9-5/8" CSG @ 2060' AND TRY TO GET INJECTION RATE

1/10/2023 PICK UP & RIH WITH 9-5/8" AD-1 PACKER SET PACKER @ 94' WITH 3 JTS IN THE HOLE

RU WL TO WELL PICK UP CCL 1-9/16 GUN 3.2 GRAM CHARGE 0.23" ENTRY HOLE 6.62" PENETRATION WENT DOWN TO 2060' AND SHOT 4

1/10/2023 SQZ HOLES POOH RDMO WL

RU CMT PUMP ON TBG ATTEMPT TO EST -- INJ RATE BUT WE COULDN'T BREAK CIRCULATION WE PRESSURE UP CASING TO 1800 PSI HOLDING PRESSURE FOR 30 MINUTES WITH NO LEAK OFF, BLEED OFF PRESSURE RU PUMP ON THE 13-3/8" INTERMEDIUM CASING PRESSURE UP TO 1500 PSI HOLDING PRESSURE FOR 15 MINUTES WITH NO LEAK OFF, WE SURGE WELL MULTIPLE TIMES WITH SAME NEGATIVE RESULTS, CONTACT UPPER MANAGEMENT CAME TO A CONCLUSION THAT WE NEED BIGGER GUNS TO PENETRATE ONLY THE

1/10/2023 9-5/8" CSG, CALL RENEGADE WL TO BRING DIFFERENT GUNS TOMORROW MORNING,

1/10/2023 SECURE WELL SDFN

1/10/2023 CREW TRAVEL BACK HOME

---

1/11/2023 CREW TRAVEL TO LOCATION

1/11/2023 HTGSM W/ ALL PERSONAL ON LOCATION

1/11/2023 CHECK PSI ON WELL ALL STRINGS = 0 PSI OPEN WELL

MIRU RENEGADE WL TO WELL RENEGADE USED 1-9/16" RTG CARRIER WITH OWEN CORE LAB CHARGES PAC-1562-457 CHARGE WITH A

1/11/2023 SPEC OF .28 ENTRY HOLE AND 5/8"-3/4" OF PENETRATION WENT DOWN TO 2060' AND SHOT 4 SQZ HOLES POOH RDMO WL

RU CMT PUMP ON TBG EST- INJ RATE CIRCULATE BOTTOMS UP WITH 200 BBLS WITH 10# BRINE WATER 1.5 BPM @ 2500 PSI, GETTING RETURNS ON INTERMEDIUM CASING START SEEING SAND ON RETURNS AFTER 140 BBLS GONE, RETURNS CLEAN UP AT 190 BBLS

1/11/2023 INJECTION RATE DROPPED ONLY 300 PSI TO 2200 PSI, NOTE: CONTACT MR. KENT WITH NMBLM GIVE THE APPROVAL TO RE-PERFORATE

1/11/2023 9-5/8" CSG @ 2058' AND TRY TO GET BETTER INJECTION RATE,

MIRU WL TO WELL RIH WITH 1-9/16" RTG CARRIER WITH OWEN CORE LAB CHARGES PAC-1562-457 CHARGE WITH A SPEC OF .28 ENTRY

1/11/2023 HOLE AND 5/8"-3/4" OF PENETRATION WENT DOWN TO 2058' AND SHOT 4 SQZ HOLES POOH RDMO WL

RU CMT PUMP ON TBG EST- INJ RATE WITH 10# BRINE WATER 2 BPM @ 600 PSI GETTING FULL RETURNS ON INTERMEDIUM CASING

1/11/2023 CIRCULATE TOTAL OF 20 BBLS, CONTACT MR. KENT WITH NMBLM LET HIM KNOW INJECTION RATE HE GIVE THE OK TO CONTINUE AS

1/11/2023 PROGRAM

12TH PLUG) PERF @ 2060' SQZ 310 SX CLASS C CMT W/ 2% CALCIUM CHLORIDE, 72.8 BBLS, 14.8# 1.32 YIELD, COVERING 1029' DISPLACE

1/11/2023 TO 1510' DISPLACE W/ 100.7 BBLS ISIP = 1000 PSI WASH UP PUMP & FLOW BACK PIT

1/11/2023 SECURE WELL SDFN

1/11/2023 CREW TRAVEL BACK HOME

---

1/12/2023 CREW TRAVEL TO LOCATION

1/12/2023 HTGSM W/ ALL PERSONAL ON LOCATION

1/12/2023 CHECK PSI ON WELL TBG = 200 PSI, INTER CSG = 0 PSI SURF CSG = 0 PSI BLEED OFF PRESSURE OPEN WELL

MIRU RENEGADE WL PICK UP CCL 1-9/16" RTG CARRIER WITH OWEN CORE LAB CHARGES PAC-1562-457 CHARGE WITH A SPEC OF .28

1/12/2023 ENTRY HOLE AND 5/8"-3/4" OF PENETRATION RIH TAG TOC @ 1412' PICKU UP TO 1400' SHOT 5 SQZ HOLES POOH RDMO WL, NOTE:

CONTACT MR. KENT WITH NMBLM GIVE THE APPROVAL TO PERFORATE @ 1400'

RU CMT PUMP ON TBG EST- INJ RATE WITH 10# BRINE WATER 2 BPM @ 600 PSI GETTING FULL RETURNS ON INTERMEDIUM CASING

1/12/2023 PUMP AHEAD 20 BBLS, 13TH PLUG) PERF @ 1400' SQZ 310 SX CLASS C CMT W/ 2% CALCIUM CHLORIDE, 72.8 BBLS, 14.8# 1.32 YIELD,

1/12/2023 COVERING 1029' DISPLACE TO 850' DISPLACE W/ 54 BBLS ISIP = 500 PSI

1/12/2023 WOC TO TAG

MIRU RENEGADE WL PICK UP CCL 1-9/16" RTG CARRIER WITH OWEN CORE LAB CHARGES PAC-1562-457 CHARGE WITH A SPEC OF .28

1/12/2023 ENTRY HOLE AND 5/8"-3/4" OF PENETRATION RIH TAG TOC @ 845' PICKU UP TO 835' SHOT 5 SQZ HOLES POOH RDMO WL, NOTE:

CONTACT MR. KENT WITH NMBLM GIVE THE APPROVAL TO PERFORATE @ 835'

RU CMT PUMP ON TBG EST- INJ RATE WITH 10# BRINE WATER 2 BPM @ 500 PSI GETTING FULL RETURNS ON INTERMEDIUM CASING

1/12/2023 PUMP AHEAD 20 BBLS 14TH PLUG) PERF @ 835' SQZ 310 SX CLASS C CMT W/ 2% CALCIUM CHLORIDE, 72.8 BBLS, 14.8# 1.32 YIELD,

1/12/2023 COVERING 1029' DISPLACE TO 285' DISPLACE W/ 14 BBLS ISIP = 500 PSI, WASH UP PUMP & FLOW BACK PIT

1/12/2023 SECURE WELL SDFN

1/12/2023 CREW TRAVEL BACK HOME

---

1/13/2023 CREW TRAVEL TO LOCATION

1/13/2023 HTGSM W/ ALL PERSONAL ON LOCATION



1/13/2023 CHECK PSI ON WELL ALL STRINGS = 0 PSI OPEN WELL

MIRU RENEGADE WL PICK UP CCL 1-9/16" RTG CARRIER WITH OWEN CORE LAB CHARGES PAC-1562-457 CHARGE WITH A SPEC OF .28 ENTRY HOLE AND 5/8"-3/4" OF PENETRATION RIH TAG TOC @ 290' PICKU UP TO 280' SHOT 5 SQZ HOLES POOH RDMO WL, NOTE:

1/13/2023 CONTACT MR. KENT WITH NMBLM GIVE THE APPROVAL TO PERFORATE @ 280'

RU CMT PUMP ON TBG EST- INJ RATE WITH 10# BRINE WATER 2 BPM @ 800 PSI GETTING FULL RETURNS ON INTERMEDIUM CASING

1/13/2023 CIRCULATE TOTAL OF 40 BBLS,

1/13/2023 UNSEAT PACKER POOH LAY DOWN 3 JTS AND PACKER, RIH WITH 4 STANDS, POOH LAY DOWN 8 JTS

1/13/2023 RD WORK FLOOR & ASSOCIATED EQUIPMENT

1/13/2023 ND 3K X 11" HYD BOP ND 3K X 11" SPOOL

1/13/2023 NU 11" X 10K WELL HEAD FLANGE

RU CMT PUMP ON 9-5/8" PRODUCTION CASING BREAK CIRCULATION WITH 10 BBLS OF 10# BRINE WATER 15TH PLUG) PERF @ 280' SQZ 170 SXS CLASS C CMT W/ 2% CALCIUM CHLORIDE, 39.9 BBLS, 14.8# 1.32 YIELD, COVERING 564' FROM 280' - 0' (SURFACE) GOT FULL RETURNS ON INTERMEDIUM CASING CLOSE VALVE AND LEFT 500 PSI ON PRODUCTION CASING, WOC TOP OFF HOLE WITH CMT VERIFY

1/13/2023 CMT AT SURFACE

RDMO PU & P&A PUMP ASSOCIATED EQUIPMENT, STAGED ALL P&A EQUIPMENT TO SIDE OF LOCATION, CLEAN UP LOCATION P&A JOB

1/13/2023 COMPLETED

1/13/2023 CREW TRAVEL BACK HOME

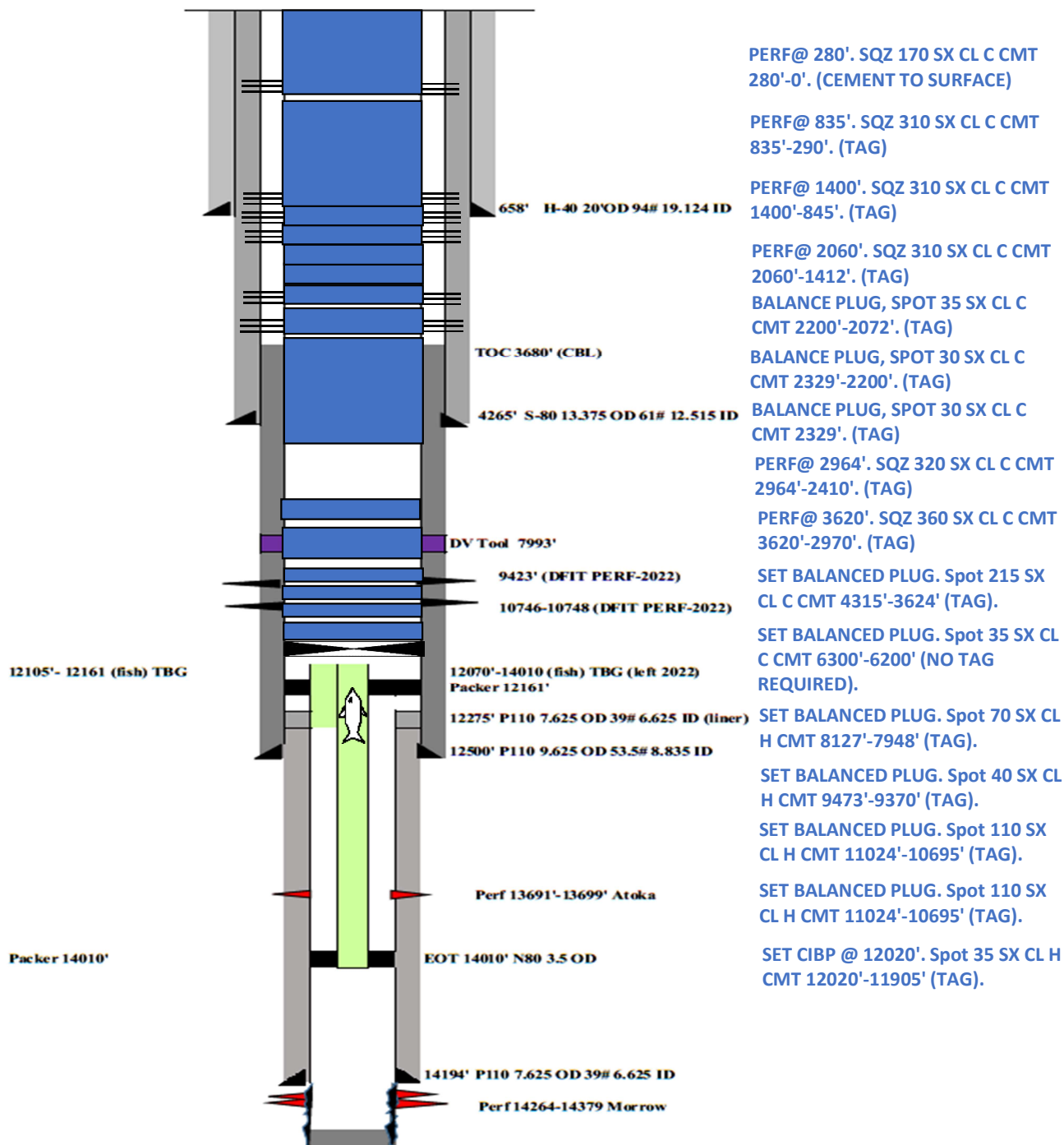
## Final Wellbore Diagram 2/1/2023

Oper.: OXY USA Inc

**Sundance Fed 1**

API - 30015205380000

FRED APPOU 3/24/22





**District I**  
1625 N. French Dr., Hobbs, NM 88240  
Phone:(575) 393-6161 Fax:(575) 393-0720  
**District II**  
811 S. First St., Artesia, NM 88210  
Phone:(575) 748-1283 Fax:(575) 748-9720  
**District III**  
1000 Rio Brazos Rd., Aztec, NM 87410  
Phone:(505) 334-6178 Fax:(505) 334-6170  
**District IV**  
1220 S. St Francis Dr., Santa Fe, NM 87505  
Phone:(505) 476-3470 Fax:(505) 476-3462

State of New Mexico  
Energy, Minerals and Natural Resources  
Oil Conservation Division  
1220 S. St Francis Dr.  
Santa Fe, NM 87505

CONDITIONS  
  
Action 191239

CONDITIONS

Operator: OXY USA INC P.O. Box 4294 Houston, TX 772104294	OGRID: 16696
	Action Number: 191239
	Action Type: [C-103] Sub. Plugging (C-103P)

CONDITIONS

Created By	Condition	Condition Date
gcordero	None	3/10/2023