

Well Name: HEADS CC 9-4 FEDERAL COM	Well Location: T24S / R29E / SEC 16 / NENW / 32.222683 / -103.992676	County or Parish/State: EDDY / NM
Well Number: 37H	Type of Well: OIL WELL	Allottee or Tribe Name:
Lease Number: NMNM99034	Unit or CA Name:	Unit or CA Number:
US Well Number: 3001547194	Well Status: Approved Application for Permit to Drill	Operator: OXY USA INCORPORATED

Notice of Intent

Sundry ID: 2706527

Type of Submission: Notice of Intent	Type of Action: APD Change
Date Sundry Submitted: 12/08/2022	Time Sundry Submitted: 01:48
Date proposed operation will begin: 01/29/2023	

Procedure Description: Blurb 37H OXY USA INC. respectfully requests approval to amend the subject well APD. The BHL and drill plan have changed. Please see the attached drill plan, amended C-102, and other attached documents. Old BHL: 20 FNL, 1930 FWL, LOT 4, SEC 4, T24S, R29E New BHL: 20 FNL, 1700 FWL, LOT 3, SEC 3, T24S, R29E

NOI Attachments

Procedure Description

- HeadsCC9_4FederalCom37H_TNSWedge441_5.500in_20.00__P110CY_20221208134819.pdf
- HeadsCC9_4FederalCom37H_TNSWedge425_5.500in_20.00__P110CY_20221208134819.pdf
- HeadsCC9_4FederalCom37H_TNSWedge461_5.500in_20.00__P110CY_20221208134822.pdf
- HeadsCC9_4FederalCom37H_TNSWedge461_7.000in_32.00__P110CY_20221208134822.pdf
- HeadsCC9_4FederalCom37H_DrillPlan_20221208134812.pdf
- HeadsCC9_4FederalCom37H_13inADAPT_13.375in_7in_10x10_20221208134812.pdf
- 22_1031_HEADS_CC_9_4_FED_COM_37H_C102_FLAT_20221208134812.pdf
- HeadsCC9_4FederalCom37H_DirectPlan_20221208134812.pdf
- HeadsCC9_4FederalCom37H_DirectPlot_20221208134812.pdf

Received by OCD: 3/9/2023 8:04:08 AMPage 2 of 34

Well Name: HEADS CC 9-4 FEDERAL COM	Well Location: T24S / R29E / SEC 16 / NENW / 32.222683 / -103.992676	County or Parish/State: EDDY / NM
Well Number: 37H	Type of Well: OIL WELL	Allottee or Tribe Name:
Lease Number: NMNM99034	Unit or CA Name:	Unit or CA Number:
US Well Number: 3001547194	Well Status: Approved Application for Permit to Drill	Operator: OXY USA INCORPORATED

HeadsCC9_4FederalCom37H_SpudRigData_20221208134812.pdf

Conditions of Approval

Additional

HEADS_CC_9_4_FEDERAL_COM_37H___SUNDRY_COA_20230306133527.pdf

Operator

I certify that the foregoing is true and correct. Title 18 U.S.C. Section 1001 and Title 43 U.S.C. Section 1212, make it a crime for any person knowingly and willfully to make to any department or agency of the United States any false, fictitious or fraudulent statements or representations as to any matter within its jurisdiction. Electronic submission of Sundry Notices through this system satisfies regulations requiring a

Operator Electronic Signature: STEPHEN JANACEK	Signed on: DEC 08, 2022 01:48 PM
Name: OXY USA INCORPORATED	
Title: Regulatory Engineer	
Street Address: 5 Greenway Plaza, Suite 110	
City: Houston	State: TX
Phone: (713) 497-2417	
Email address: stephen_janacek@oxy.com	

Field

Representative Name:		
Street Address:		
City:	State:	Zip:
Phone:		
Email address:		

BLM Point of Contact

BLM POC Name: KEITH P IMMATTY	BLM POC Title: ENGINEER
BLM POC Phone: 5759884722	BLM POC Email Address: KIMMATTY@BLM.GOV
Disposition: Approved	Disposition Date: 03/06/2023
Signature: Keith Immatty	

PECOS DISTRICT DRILLING CONDITIONS OF APPROVAL

All previous COAs still apply

OPERATOR'S NAME:	OXY USA INCORPORATED
WELL NAME & NO.:	HEADS CC 9-4 FEDERAL COM / 37H
SURFACE HOLE FOOTAGE:	792'/N & 1654'/W
BOTTOM HOLE FOOTAGE:	20'/N & 1700'/W
LOCATION:	Section 16, T.24 S., R.29 E.
COUNTY:	Eddy County, New Mexico

COA

H2S	<input checked="" type="radio"/> Yes	<input type="radio"/> No	
Potash	<input checked="" type="radio"/> None	<input type="radio"/> Secretary	<input type="radio"/> R-111-P
Cave/Karst Potential	<input type="radio"/> Low	<input checked="" type="radio"/> Medium	<input type="radio"/> High
Cave/Karst Potential	<input type="radio"/> Critical		
Variance	<input type="radio"/> None	<input checked="" type="radio"/> Flex Hose	<input type="radio"/> Other
Wellhead	<input type="radio"/> Conventional	<input type="radio"/> Multibowl	<input checked="" type="radio"/> Both
Other	<input type="checkbox"/> 4 String Area	<input type="checkbox"/> Capitan Reef	<input type="checkbox"/> WIPP
Other	<input checked="" type="checkbox"/> Fluid Filled	<input checked="" type="checkbox"/> Cement Squeeze	<input type="checkbox"/> Pilot Hole
Special Requirements	<input type="checkbox"/> Water Disposal	<input checked="" type="checkbox"/> COM	<input type="checkbox"/> Unit

A. CASING

Alternate Casing Design:

1. The **13-3/8** inch surface casing shall be set at approximately **581** feet (a minimum of 70 feet (Eddy County) into the Rustler Anhydrite and above the salt) and cemented to the surface.
 - a. If cement does not circulate to the surface, the appropriate BLM office shall be notified and a temperature survey utilizing an electronic type temperature survey with surface log readout will be used or a cement bond log shall be run to verify the top of the cement. Temperature survey will be run a minimum of six hours after pumping cement and ideally between 8-10 hours after completing the cement job.
 - b. Wait on cement (WOC) time for a primary cement job will be a minimum of **8 hours** or 500 pounds compressive strength, whichever is greater. (This is to include the lead cement)
 - c. Wait on cement (WOC) time for a remedial job will be a minimum of 4 hours after bringing cement to surface or 500 pounds compressive strength,

whichever is greater.

- d. If cement falls back, remedial cementing will be done prior to drilling out that string.

Intermediate casing must be kept fluid filled to meet BLM minimum collapse requirement.

2. The **9-5/8** inch intermediate casing shall be set at approximately **10,177** feet. The minimum required fill of cement behind the **9-5/8** inch intermediate casing is:

Option 1 (Single Stage):

- Cement to surface. If cement does not circulate see B.1.a, c-d above.
Wait on cement (WOC) time for a primary cement job is to include the lead cement slurry due to cave/karst or potash.

Option 2:

Operator has proposed a DV tool, the depth may be adjusted as long as the cement is changed proportionally. The DV tool may be cancelled if cement circulates to surface on the first stage.

- a. First stage to DV tool: Cement to circulate. If cement does not circulate off the DV tool, contact the appropriate BLM office before proceeding with second stage cement job.

- b. Second stage above DV tool:

- Cement to surface. If cement does not circulate, contact the appropriate BLM office.
Wait on cement (WOC) time for a primary cement job is to include the lead cement slurry due to cave/karst or potash.

- ❖ In Medium Cave/Karst Areas if cement does not circulate to surface on the first two casing strings, the cement on the 3rd casing string must come to surface.

Operator has proposed to pump down 13-3/8" X 9-5/8" annulus. Operator must top out cement after the bradenhead squeeze and verify cement to surface. Operator can also check TOC with Echo-meter. CBL must be run from TD of the 9-5/8" casing to surface if confidence is lacking on the quality of the bradenhead squeeze cement job. Submit results to BLM.

3. The **7** inch x **5-1/2** inch tapered production casing shall be set at approximately **21,561** feet. The minimum required fill of cement behind the **7** inch x **5-1/2** inch tapered production casing is:

Option 1 (Single Stage):

- Cement should tie-back at least **200 feet** into previous casing string. Operator shall provide method of verification.

Option 2:

Operator has proposed a DV tool, the depth may be adjusted as long as the cement is changed proportionally. The DV tool may be cancelled if cement circulates to surface on the first stage.

- a. First stage to DV tool: Cement to circulate. If cement does not circulate off the DV tool, contact the appropriate BLM office before proceeding with second stage cement job.
- b. Second stage above DV tool:
 - Cement should tie-back at least **200 feet** into previous casing string. Operator shall provide method of verification.

Production hole to be ensured to be kept fluid filled to meet BLM minimum tensile requirement.

GENERAL REQUIREMENTS

The BLM is to be notified in advance for a representative to witness:

- a. Spudding well (minimum of 24 hours)
- b. Setting and/or Cementing of all casing strings (minimum of 4 hours)
- c. BOPE tests (minimum of 4 hours)

☒ Eddy County

Call the Carlsbad Field Office, 620 East Greene St., Carlsbad, NM 88220, (575) 361-2822

☒ Lea County

Call the Hobbs Field Station, 414 West Taylor, Hobbs NM 88240, (575) 689-5981

1. Unless the production casing has been run and cemented or the well has been properly plugged, the drilling rig shall not be removed from over the hole without prior approval.

- a. In the event the operator has proposed to drill multiple wells utilizing a skid/walking rig. Operator shall secure the wellbore on the current well, after installing and testing the wellhead, by installing a blind flange of like pressure rating to the wellhead and a pressure gauge that can be monitored while drilling is performed on the other well(s).
- b. When the operator proposes to set surface casing with Spudder Rig
 - Notify the BLM when moving in and removing the Spudder Rig.
 - Notify the BLM when moving in the 2nd Rig. Rig to be moved in within 90 days of notification that Spudder Rig has left the location.
 - BOP/BOPE test to be conducted per Onshore Oil and Gas Order No. 2 as soon as 2nd Rig is rigged up on well.
2. Floor controls are required for 3M or Greater systems. These controls will be on the rig floor, unobstructed, readily accessible to the driller and will be operational at all times during drilling and/or completion activities. Rig floor is defined as the area immediately around the rotary table; the area immediately above the substructure on which the draw works are located, this does not include the dog house or stairway area.
3. The record of the drilling rate along with the GR/N well log run from TD to surface (horizontal well – vertical portion of hole) shall be submitted to the BLM office as well as all other logs run on the borehole 30 days from completion. If available, a digital copy of the logs is to be submitted in addition to the paper copies. The Rustler top and top and bottom of Salt are to be recorded on the Completion Report.

A. CASING

1. Changes to the approved APD casing program need prior approval if the items substituted are of lesser grade or different casing size or are Non-API. The Operator can exchange the components of the proposal with that of superior strength (i.e. changing from J-55 to N-80, or from 36# to 40#). Changes to the approved cement program need prior approval if the altered cement plan has less volume or strength or if the changes are substantial (i.e. Multistage tool, ECP, etc.). The initial wellhead installed on the well will remain on the well with spools used as needed.
2. Wait on cement (WOC) for Potash Areas: After cementing but before commencing any tests, the casing string shall stand cemented under pressure until both of the following conditions have been met: 1) cement reaches a minimum compressive strength of 500 psi for all cement blends, 2) until cement has been in place at least 24 hours. WOC time will be recorded in the driller's log. The casing integrity test can be done (prior to the cement setting up) immediately after bumping the plug.
3. Wait on cement (WOC) for Water Basin: After cementing but before commencing any tests, the casing string shall stand cemented under pressure until both of the following conditions have been met: 1) cement reaches a minimum compressive strength of 500 psi at the shoe, 2) until cement has been in place at least 8 hours.

WOC time will be recorded in the driller's log. See individual casing strings for details regarding lead cement slurry requirements. The casing integrity test can be done (prior to the cement setting up) immediately after bumping the plug.

4. Provide compressive strengths including hours to reach required 500 pounds compressive strength prior to cementing each casing string. Have well specific cement details onsite prior to pumping the cement for each casing string.
5. No pea gravel permitted for remedial or fall back remedial without prior authorization from the BLM engineer.
6. On that portion of any well approved for a 5M BOPE system or greater, a pressure integrity test of each casing shoe shall be performed. Formation at the shoe shall be tested to a minimum of the mud weight equivalent anticipated to control the formation pressure to the next casing depth or at total depth of the well. This test shall be performed before drilling more than 20 feet of new hole.
7. If hardband drill pipe is rotated inside casing, returns will be monitored for metal. If metal is found in samples, drill pipe will be pulled and rubber protectors which have a larger diameter than the tool joints of the drill pipe will be installed prior to continuing drilling operations.
8. Whenever a casing string is cemented in the R-111-P potash area, the NMOCD requirements shall be followed.

B. PRESSURE CONTROL

1. All blowout preventer (BOP) and related equipment (BOPE) shall comply with well control requirements as described in Onshore Oil and Gas Order No. 2 and API RP 53 Sec. 17.
2. If a variance is approved for a flexible hose to be installed from the BOP to the choke manifold, the following requirements apply: The flex line must meet the requirements of API 16C. Check condition of flexible line from BOP to choke manifold, replace if exterior is damaged or if line fails test. Line to be as straight as possible with no hard bends and is to be anchored according to Manufacturer's requirements. The flexible hose can be exchanged with a hose of equal size and equal or greater pressure rating. Anchor requirements, specification sheet and hydrostatic pressure test certification matching the hose in service, to be onsite for review. These documents shall be posted in the company man's trailer and on the rig floor.
3. 5M or higher system requires an HCR valve, remote kill line and annular to match. The remote kill line is to be installed prior to testing the system and tested to stack pressure.

4. If the operator has proposed a multi-bowl wellhead assembly in the APD. The following requirements must be met:
 - a. Wellhead shall be installed by manufacturer's representatives, submit documentation with subsequent sundry.
 - b. If the welding is performed by a third party, the manufacturer's representative shall monitor the temperature to verify that it does not exceed the maximum temperature of the seal.
 - c. Manufacturer representative shall install the test plug for the initial BOP test.
 - d. Whenever any seal subject to test pressure is broken, all the tests in OOGO2.III.A.2.i must be followed.
 - e. If the cement does not circulate and one inch operations would have been possible with a standard wellhead, the well head shall be cut off, cementing operations performed and another wellhead installed.
5. The appropriate BLM office shall be notified a minimum of 4 hours in advance for a representative to witness the tests.
 - a. In a water basin, for all casing strings utilizing slips, these are to be set as soon as the crew and rig are ready and any fallback cement remediation has been done. The casing cut-off and BOP installation can be initiated four hours after installing the slips, which will be approximately six hours after bumping the plug. For those casing strings not using slips, the minimum wait time before cut-off is eight hours after bumping the plug. BOP/BOPE testing can begin after cut-off or once cement reaches 500 psi compressive strength (including lead cement), whichever is greater. However, if the float does not hold, cut-off cannot be initiated until cement reaches 500 psi compressive strength (including lead when specified).
 - b. In potash areas, for all casing strings utilizing slips, these are to be set as soon as the crew and rig are ready and any fallback cement remediation has been done. For all casing strings, casing cut-off and BOP installation can be initiated at twelve hours after bumping the cement plug. The BOPE test can be initiated after bumping the cement plug with the casing valve open. (only applies to single stage cement jobs, prior to the cement setting up.)
 - c. The tests shall be done by an independent service company utilizing a test plug not a cup or J-packer and can be initiated immediately with the casing valve open. The operator also has the option of utilizing an independent tester to test without a plug (i.e. against the casing) pursuant to Onshore Order 2 with the pressure not to exceed 70% of the burst rating for the casing. Any test against the casing must meet the WOC time for water basin (8 hours) or potash (24 hours) or 500 pounds compressive strength, whichever is greater, prior to initiating the test (see casing segment as lead cement may be critical item).

- d. The test shall be run on a 5000 psi chart for a 2-3M BOP/BOP, on a 10000 psi chart for a 5M BOP/BOPE and on a 15000 psi chart for a 10M BOP/BOPE. If a linear chart is used, it shall be a one hour chart. A circular chart shall have a maximum 2 hour clock. If a twelve hour or twenty-four hour chart is used, tester shall make a notation that it is run with a two hour clock.
- e. The results of the test shall be reported to the appropriate BLM office.
- f. All tests are required to be recorded on a calibrated test chart. A copy of the BOP/BOPE test chart and a copy of independent service company test will be submitted to the appropriate BLM office.
- g. The BOP/BOPE test shall include a low pressure test from 250 to 300 psi. The test will be held for a minimum of 10 minutes if test is done with a test plug and 30 minutes without a test plug. This test shall be performed prior to the test at full stack pressure.
- h. BOP/BOPE must be tested by an independent service company within 500 feet of the top of the Wolfcamp formation if the time between the setting of the intermediate casing and reaching this depth exceeds 20 days. This test does not exclude the test prior to drilling out the casing shoe as per Onshore Order No. 2.

C. DRILLING MUD

Mud system monitoring equipment, with derrick floor indicators and visual and audio alarms, shall be operating before drilling into the Wolfcamp formation, and shall be used until production casing is run and cemented.

D. WASTE MATERIAL AND FLUIDS

All waste (i.e. drilling fluids, trash, salts, chemicals, sewage, gray water, etc.) created as a result of drilling operations and completion operations shall be safely contained and disposed of properly at a waste disposal facility. No waste material or fluid shall be disposed of on the well location or surrounding area.

Porto-johns and trash containers will be on-location during fracturing operations or any other crew-intensive operations.

KPI – 3/6/2023

DISTRICT I
1625 N. FRENCH DR., HOBBS, NM 88240
Phone: (575) 393-6161 Fax: (575) 393-0720

DISTRICT II
811 S. FIRST ST., ARTESIA, NM 88210
Phone: (575) 746-1283 Fax: (575) 746-9720

DISTRICT III
1000 RIO BRAZOS RD., AZTEC, NM 87410
Phone: (505) 334-6178 Fax: (505) 334-6170

DISTRICT IV
1220 S. ST. FRANCIS DR., SANTA FE, NM 87505
Phone: (505) 476-3460 Fax: (505) 476-3462

State of New Mexico
Energy, Minerals & Natural Resources Department
OIL CONSERVATION DIVISION
1220 SOUTH ST. FRANCIS DR.
Santa Fe, New Mexico 87505

Form C-102
Revised August 1, 2011
Submit one copy to appropriate
District Office

☒ AMENDED REPORT

WELL LOCATION AND ACREAGE DEDICATION PLAT

API Number 30-015-47194	Pool Code 98220	Pool Name PURPLE SAGE WOLFCAMP (GAS)
Property Code 328290	Property Name HEADS CC 9_4 FEDERAL COM	Well Number 37H
OGRID No. 16696	Operator Name OXY USA INC.	Elevation 2927.4'

Surface Location

UL or lot No.	Section	Township	Range	Lot Idn	Feet from the	North/South line	Feet from the	East/West line	County
C	16	24-S	29-E		792	NORTH	1654	WEST	EDDY

Bottom Hole Location If Different From Surface

UL or lot No.	Section	Township	Range	Lot Idn	Feet from the	North/South line	Feet from the	East/West line	County
3	4	24-S	29-E		20	NORTH	1700	WEST	EDDY

Dedicated Acres	Joint or Infill	Consolidation Code	Order No.
1280	Y		

NO ALLOWABLE WILL BE ASSIGNED TO THIS COMPLETION UNTIL ALL INTERESTS HAVE BEEN CONSOLIDATED
OR A NON-STANDARD UNIT HAS BEEN APPROVED BY THE DIVISION

**PROPOSED BOTTOM
HOLE LOCATION NAD 83**

Y=456297.3 N
X=646670.0 E
LAT.=32.253977° N
LONG.=103.992596° W

LTP NAD 83

100' FNL & 1700' FWL
Y=456217.3 N
X=646670.3 E
LAT.=32.253757° N
LONG.=103.992596° W

POINT LEGEND NAD83

1	Y=456311.0 N
2	X=644969.9 E
3	Y=453866.3 N
4	X=644969.6 E
5	Y=451006.8 N
6	X=644997.4 E
7	Y=448351.8 N
8	X=645008.9 E
9	Y=445695.4 N
10	X=645021.1 E
11	Y=456320.9 N
12	X=647615.9 E
13	Y=451020.7 N
14	X=647641.0 E
15	Y=445710.8 N
16	X=647666.6 E
17	Y=456330.3 N
18	X=650262.8 E
19	Y=453868.3 N
20	X=650273.5 E
21	Y=451034.0 N
22	X=650284.7 E
23	Y=448382.0 N
24	X=650298.1 E
25	Y=445726.2 N
26	X=650312.0 E

FTP NAD 83

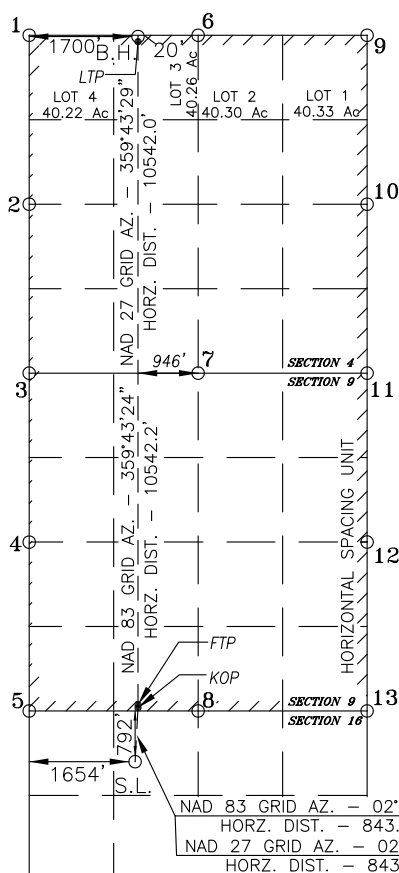
100' FSL & 1700' FWL
Y=445805.3 N
X=646720.6 E
LAT.=32.225136° N
LONG.=103.992540° W

KOP NAD 83

50' FSL & 1700' FWL
Y=445755.3 N
X=646720.9 E
LAT.=32.224998° N
LONG.=103.992540° W

SURFACE LOCATION NAD 83

Y=444913.1 N
X=646681.4 E
LAT.=32.222683° N
LONG.=103.992676° W



**PROPOSED BOTTOM
HOLE LOCATION NAD 27**

Y=456238.1 N
X=605486.4 E
LAT.=32.253855° N
LONG.=103.992106° W

LTP NAD 27

100' FNL & 1700' FWL
Y=456158.1 N
X=605486.8 E
LAT.=32.253635° N
LONG.=103.992106° W

POINT LEGEND NAD27

1	Y=456251.8 N
2	X=603786.3 E
3	Y=453601.2 N
4	X=603800.0 E
5	Y=450947.8 N
6	X=603813.7 E
7	Y=448292.8 N
8	X=603825.1 E
9	Y=445636.4 N
10	X=603837.3 E
11	Y=456261.7 N
12	X=606432.3 E
13	Y=450981.7 N
14	X=606457.3 E
15	Y=445651.8 N
16	X=606482.7 E
17	Y=456271.1 N
18	X=609079.2 E
19	Y=453629.2 N
20	X=609089.8 E
21	Y=450974.9 N
22	X=609101.0 E
23	Y=448323.3 N
24	X=609114.4 E
25	Y=445667.2 N
26	X=609128.2 E

FTP NAD 27

100' FSL & 1700' FWL
Y=445746.3 N
X=605536.8 E
LAT.=32.225013° N
LONG.=103.992051° W

KOP NAD 27

50' FSL & 1700' FWL
Y=445696.3 N
X=605537.0 E
LAT.=32.224875° N
LONG.=103.992051° W

SURFACE LOCATION NAD 27

Y=444854.1 N
X=605497.6 E
LAT.=32.222561° N
LONG.=103.992187° W

OPERATOR CERTIFICATION

I hereby certify that the information herein is true and complete to the best of my knowledge and belief, and that this organization either owns a working interest or unleased mineral interest in the land including the proposed bottom hole location or has a right to drill this well at this location pursuant to a contract with an owner of such mineral or working interest, or to a voluntary pooling agreement or a compulsory pooling order heretofore entered by the division.

Stephen Janacek

12/08/2022

Signature Date

STEPHEN JANACEK

Printed Name

STEPHEN_JANACEK@OXY.COM

E-mail Address

SURVEYOR CERTIFICATION

I hereby certify that the well location shown on this plat was plotted from field notes of actual surveys made by me or under my supervision, and that the same is true and correct to the best of my belief.

OCTOBER 21, 2022

Date of Survey

Signature & Seal of Professional Surveyor



Chad Harcrow 11/3/22
Certificate No. CHAD HARCROW 17777
W.O. #22-1031 DRAWN BY: AH

Oxy USA Inc. - Heads CC 9_4 Federal Com 37H

Drill Plan

1. Geologic Formations

TVD of Target (ft):	10723	Pilot Hole Depth (ft):	
Total Measured Depth (ft):	21561	Deepest Expected Fresh Water (ft):	132

Delaware Basin

Formation	MD-RKB (ft)	TVD-RKB (ft)	Expected Fluids
Rustler	132	132	
Salado	641	641	Salt
Castile	1315	1315	Salt
Delaware	2884	2884	Oil/Gas/Brine
Bell Canyon	2945	2945	Oil/Gas/Brine
Cherry Canyon	3785	3785	Oil/Gas/Brine
Brushy Canyon	5032	5032	Losses
Bone Spring	6616	6616	Oil/Gas
Bone Spring 1st	7624	7624	Oil/Gas
Bone Spring 2nd	8442	8441	Oil/Gas
Bone Spring 3rd	9564	9548	Oil/Gas
Wolfcamp	9937	9915	Oil/Gas
Penn			Oil/Gas
Strawn			Oil/Gas

*H2S, water flows, loss of circulation, abnormal pressures, etc.

2. Casing Program

Section	Hole Size (in)	MD		TVD		Csg. OD (in)	Csg Wt. (ppf)	Grade	Conn.
		From (ft)	To (ft)	From (ft)	To (ft)				
Surface	17.5	0	581	0	581	13.375	54.5	J-55	BTC
Intermediate	12.25	0	10177	0	10149	9.625	40	L-80 HC	BTC
Production	8.75	0	10727	0	10486	7	32	P-110	DQX
Production	8.5	10727	21561	10486	10723	5.5	20	P-110	DQX

All casing strings will be tested in accordance with Onshore Oil and Gas Order #2 III.B.1.h

*Oxy requests the option to run production casing with DQX, TORQ DQW, Wedge 425, Wedge 461, and/or Wedge 441 connections to accommodate hole conditions or drilling operations.

All Casing SF Values will meet or exceed those below			
SF Collapse	SF Burst	Body SF Tension	Joint SF Tension
1.125	1.2	1.4	1.4

Annular Clearance Variance Request

As per the agreement reached in the Oxy/BLM face-to-face meeting on Feb 22, 2018, Oxy requests permission to allow deviation from the 0.422" annular clearance requirement from Onshore Order #2 under the following conditions:

1. Annular clearance to meet or exceed 0.422" between intermediate casing ID and production casing coupling only on the first 500' overlap between both casings.
2. Annular clearance less than 0.422" is acceptable for the curve and lateral portions of the production open hole section.

	Y or N
Is casing new? If used, attach certification as required in Onshore Order #1	Y
Does casing meet API specifications? If no, attach casing specification sheet.	Y
Is premium or uncommon casing planned? If yes attach casing specification sheet.	Y
Does the above casing design meet or exceed BLM's minimum standards? If not provide justification (loading assumptions, casing design criteria).	Y
Will the intermediate pipe be kept at a minimum 1/3 fluid filled to avoid approaching the collapse pressure rating of the casing?	Y
Is well located within Capitan Reef?	N
If yes, does production casing cement tie back a minimum of 50' above the Reef?	
Is well within the designated 4 string boundary.	
Is well located in SOPA but not in R-111-P?	N
If yes, are the first 2 strings cemented to surface and 3 rd string cement tied back 500' into previous casing?	
Is well located in R-111-P and SOPA?	N
If yes, are the first three strings cemented to surface?	
Is 2 nd string set 100' to 600' below the base of salt?	
Is well located in high Cave/Karst?	N
If yes, are there two strings cemented to surface?	
(For 2 string wells) If yes, is there a contingency casing if lost circulation occurs?	
Is well located in critical Cave/Karst?	N
If yes, are there three strings cemented to surface?	

3. Cementing Program

Section	Stage	Slurry:	Sacks	Yield (ft ³ /ft)	Density (lb/gal)	Excess:	TOC	Placement	Description
Surface	1	Surface - Tail	607	1.33	14.8	100%	-	Circulate	Class C+Accel.
Int.	1	Intermediate 1S - Tail	976	1.65	13.2	5%	5,282	Circulate	Class H+Accel., Disper., Salt
Int.	2	Intermediate 2S - Tail BH	1199	1.71	13.3	25%	-	Bradenhead	Class C+Accel.
Prod.	1	Production - Tail	2611	1.38	13.2	25%	9,677	Circulate	Class H+Ret., Disper., Salt

Offline Cementing

Oxy requests a variance to cement the 9.625" and/or 7.625" intermediate casing strings offline in accordance to the approved variance, EC Tran 461365.

The summarized operational sequence will be as follows:

Run casing as per normal operations. While running casing, conduct negative pressure test and confirm integrity of the float equipment (float collar and shoe).

Land casing.

Fill pipe with kill weight fluid, and confirm well is static.

If well Oxy requests a variance to cement the 9.625" and/or 7.625" intermediate casing strings offline in accordance to the approved variance, EC Tran 461365.

The summarized operational sequence will be as follows:

1. Run casing as per normal operations. While running casing, conduct negative pressure test and confirm integrity of the float equipment (float collar and shoe).
2. Land casing.
3. Fill pipe with kill weight fluid, and confirm well is static.
 - a. If well is not static notify BLM and kill well.
 - b. Once well is static notify BLM with intent to proceed with nipple down and offline cementing.
4. Set and pressure test annular packoff.
5. After confirmation of both annular barriers and internal barriers, nipple down BOP and install cap flange. If any barrier fails to test, the BOP stack will not be nipped down until after the cement job is completed.
6. Skid rig to next well on pad.
7. Confirm well is static before removing cap flange.
8. If well is not static notify BLM and kill well prior to cementing or nipping up for further remediation.
9. Install offline cement tool.
10. Rig up cement equipment.
 - a. Notify BLM prior to cement job.
11. Perform cement job.
12. Confirm well is static and floats are holding after cement job.
13. Remove cement equipment, offline cement tools and install night cap with pressure gauge for monitoring.

Oxy requests permission to adjust the CBL requirement after bradenhead cement jobs, on 7-5/8" intermediate casings, as per the agreement reached in the OXY/BLM meeting on September 5, 2019.

Three string wells:

- CBL will be required on one well per pad
- If the pumped volume of cement is less than permitted in the APD, BLM will be notified and a CBL may be run
- Echometer will be used after bradenhead cement job to determine TOC before pumping top-out cement

4. Pressure Control Equipment

BOP installed and tested before drilling which hole?	Size?	Min. Required WP	Type		✓	Tested to:	Deepest TVD Depth (ft) per Section:
12.25" Hole	13-5/8"	5M	Annular		✓	70% of working pressure	10149
		5M	Blind Ram		✓	250 psi / 5000 psi	
			Pipe Ram				
			Double Ram		✓		
			Other*				
8.75" Hole	13-5/8"	5M	Annular		✓	100% of working pressure	10723
		10M	Blind Ram		✓	250 psi / 10000 psi	
			Pipe Ram				
			Double Ram		✓		
			Other*				

*Specify if additional ram is utilized

Per BLM's Memorandum No. NM-2017-008: *Decision and Rationale for a Variance Allowing the Use of a 5M Annular Preventer with a 10M BOP Stack*, Oxy requests to employ a 5M annular with a 10M BOPE stack in the pilot and lateral sections of the well and will ensure that two barriers to flow are maintained at all times. Please see attached Well Control Plan.

BOP/BOPE will be tested by an independent service company to 250 psi low and the high pressure indicated above per Onshore Order 2 requirements. The System may be upgraded to a higher pressure but still tested to the working pressure listed in the table above. If the system is upgraded all the components installed will be functional and tested.

Pipe rams will be operationally checked each 24 hour period. Blind rams will be operationally checked on each trip out of the hole. These checks will be noted on the daily tour sheets. Other accessories to the BOP equipment will include a Kelly cock and floor safety valve (inside BOP) and choke lines and choke manifold.

	Formation integrity test will be performed per Onshore Order #2.
	On Exploratory wells or on that portion of any well approved for a 5M BOPE system or greater, a pressure integrity test of each casing shoe shall be performed. Will be tested in accordance with Onshore Oil and Gas Order #2 III.B.1.i.
	A variance is requested for the use of a flexible choke line from the BOP to Choke Manifold. See attached for specs and hydrostatic test chart.
Y	Are anchors required by manufacturer?
	A multibowl or a unionized multibowl wellhead system will be employed. The wellhead and connection to the BOPE will meet all API 6A requirements. The BOP will be tested per Onshore Order #2 after installation on the surface casing which will cover testing requirements for a maximum of 30 days. If any seal subject to test pressure is broken the system must be tested. We will test the flange connection of the wellhead with a test port that is directly in the flange. We are proposing that we will run the wellhead through the rotary prior to cementing surface casing as discussed with the BLM on October 8, 2015. See attached schematics.

BOP Break Testing Request

Oxy requests permission to adjust the BOP break testing requirements as per the agreement reached in the OXY/BLM meeting on September 5, 2019.

BOP break test under the following conditions:

- After a full BOP test is conducted
- When skidding to drill an intermediate section where ICP is set into the third Bone Spring or shallower.

If the kill line is broken prior to skid, two tests will be performed.

- 1) Wellhead flange, co-flex hose, kill line connections and upper pipe rams
- 2) Wellhead flange, HCR valve, check valve, upper pipe rams

If the kill line is not broken prior to skid, only one test will be performed.

- 1) Wellhead flange, co-flex hose, check valve, upper pipe rams

Oxy will use Cameron ADAPT wellhead system that uses an OEC top flange connection. This connection has been fully vetted and verified by API to Spec 6A and carries an API monogram.

5. Mud Program

Section	Depth - MD		Depth - TVD		Type	Weight (ppg)	Viscosity	Water Loss
	From (ft)	To (ft)	From (ft)	To (ft)				
Surface	0	581	0	581	Water-Based Mud	8.6 - 8.8	40-60	N/C
Intermediate	581	10177	581	10149	Saturated Brine-Based or Oil-Based Mud	8.0 - 10.0	35-45	N/C
Production	10177	21561	10149	10723	Water-Based or Oil-Based Mud	9.5 - 13.5	38-50	N/C

Sufficient mud materials to maintain mud properties and meet minimum lost circulation and weight increase requirements will be kept on location at all times. The following is a general list of products: Barite, Bentonite, Gypsum, Lime, Soda Ash, Caustic Soda, Nut Plug, Cedar Fiber, Cotton Seed Hulls, Drilling Paper, Salt Water Clay, CACL2. Oxy will use a closed mud system.

What will be used to monitor the loss or gain of fluid?	PVT/MD Totco/Visual Monitoring
---	--------------------------------

6. Logging and Testing Procedures

Logging, Coring and Testing.	
Yes	Will run GR from TD to surface (horizontal well – vertical portion of hole).
	Stated logs run will be in the Completion Report and submitted to the BLM.
No	Logs are planned based on well control or offset log information.
No	Drill stem test? If yes, explain
No	Coring? If yes, explain

Additional logs planned	Interval
No	Resistivity
No	Density
Yes	CBL
Yes	Mud log
No	PEX

7. Drilling Conditions

Condition	Specify what type and where?
BH Pressure at deepest TVD	7528 psi
Abnormal Temperature	No
BH Temperature at deepest TVD	166°F

Pump high viscosity sweeps as needed for hole cleaning. The mud system will be monitored visually/manually as well as with an electronic PVT. The necessary mud products for additional weight and fluid loss control will be on location at all times. Appropriately weighted mud will be used to isolate potential gas, oil, and water zones until such time as casing can be cemented into place for zonal

Hydrogen Sulfide (H2S) monitors will be installed prior to drilling out the surface shoe. If H2S is detected in concentrations greater than 100 ppm, the operator will comply with the provisions of Onshore Oil and Gas Order #6. If Hydrogen Sulfide is encountered, measured values and formations will be provided to the BLM.

N	H2S is present
Y	H2S Plan attached

8. Other facets of operation

	Yes/No
Will the well be drilled with a walking/skidding operation? If yes, describe. We plan to drill the 3 well pad in batch by section: all surface sections, intermediate sections and production sections. The wellhead will be secured with a night cap whenever the rig is not over the well.	Yes
Will more than one drilling rig be used for drilling operations? If yes, describe. Oxy requests the option to contract a Surface Rig to drill, set surface casing, and cement for this well. If the timing between rigs is such that Oxy would not be able to preset surface, the Primary Rig will MIRU and drill the well in its entirety per the APD. Please see the attached document for information on the spudder rig.	Yes

Total Estimated Cuttings Volume: 1586 bbls

Attachments

- ☒ Directional Plan
- ☒ H2S Contingency Plan
- ☒ Flex III Attachments
- ☒ Spudder Rig Attachment
- ☒ Premium Connection Specs

9. Company Personnel

Name	Title	Office Phone	Mobile Phone
Garrett Granier	Drilling Engineer	713-513-6633	832-265-0581
Derek Adam	Drilling Engineer Supervisor	713-366-5170	916-802-8873
Casey Martin	Drilling Superintendent	713-497-2530	337-764-4278
Kevin Threadgill	Drilling Manager	713-366-5958	361-815-0788

OXY

PRD NM DIRECTIONAL PLANS (NAD 1983)

Heads CC 9_4

Heads CC 9_4 Federal Com 37H

Wellbore #1

Plan: Permitting Plan

Standard Planning Report

01 December, 2022

OXY

Planning Report

Database:	HOPSPP	Local Co-ordinate Reference:	Well Heads CC 9_4 Federal Com 37H
Company:	ENGINEERING DESIGNS	TVD Reference:	RKB=25' @ 2952.40ft
Project:	PRD NM DIRECTIONAL PLANS (NAD 1983)	MD Reference:	RKB=25' @ 2952.40ft
Site:	Heads CC 9_4	North Reference:	Grid
Well:	Heads CC 9_4 Federal Com 37H	Survey Calculation Method:	Minimum Curvature
Wellbore:	Wellbore #1		
Design:	Permitting Plan		

Project	PRD NM DIRECTIONAL PLANS (NAD 1983)		
Map System:	US State Plane 1983	System Datum:	Mean Sea Level
Geo Datum:	North American Datum 1983		
Map Zone:	New Mexico Eastern Zone		Using geodetic scale factor

Site		Heads CC 9_4			
Site Position:		Northing:	446,198.60 usft	Latitude:	32.226200
From:	Map	Easting:	648,677.50 usft	Longitude:	-103.986208
Position Uncertainty:		2.00 ft	Slot Radius:	13.200 in	

Well		Heads CC 9_4 Federal Com 37H				
Well Position	+N/-S	0.00 ft	Northing:	444,913.10 usf	Latitude:	32.222684
	+E/-W	0.00 ft	Easting:	646,681.40 usf	Longitude:	-103.992676
Position Uncertainty		2.00 ft	Wellhead Elevation:	0.00 ft	Ground Level:	2,927.40 ft
Grid Convergence:		0.18 °				

Wellbore	Wellbore #1				
Magnetics	Model Name	Sample Date	Declination (°)	Dip Angle (°)	Field Strength (nT)
	HDGM_FILE	12/31/2019	6.90	59.93	47,852.50000000

Design	Permitting Plan			
Audit Notes:				
Version:	Phase:	PROTOTYPE	Tie On Depth:	0.00
Vertical Section:	Depth From (TVD) (ft)	+N/-S (ft)	+E/-W (ft)	Direction (°)
	0.00	0.00	0.00	359.94

Plan Survey Tool Program	Date	12/1/2022		
Depth From (ft)	Depth To (ft)	Survey (Wellbore)	Tool Name	Remarks
1	0.00	21,561.10	Permitting Plan (Wellbore #1)	B001Mb_MWD+HRGM OWSG MWD + HRGM

Plan Sections										
Measured Depth (ft)	Inclination (°)	Azimuth (°)	Vertical Depth (ft)	+N/-S (ft)	+E/-W (ft)	Dogleg Rate (°/100ft)	Build Rate (°/100ft)	Turn Rate (°/100ft)	TFO (°)	Target
0.00	0.00	0.00	0.00	0.00	0.00	0.00	0.00	0.00	0.00	
7,828.00	0.00	0.00	7,828.00	0.00	0.00	0.00	0.00	0.00	0.00	
8,828.00	10.00	5.80	8,822.93	86.60	8.80	1.00	1.00	0.00	5.80	
10,276.53	10.00	5.80	10,249.45	336.85	34.22	0.00	0.00	0.00	0.00	
11,077.10	90.00	359.72	10,723.40	901.23	40.29	10.00	9.99	-0.76	-6.18	
21,561.10	90.00	359.72	10,723.40	11,385.11	-11.40	0.00	0.00	0.00	0.00	PBHL (Heads CC

OXY

Planning Report

Database:	HOPSPP	Local Co-ordinate Reference:	Well Heads CC 9_4 Federal Com 37H
Company:	ENGINEERING DESIGNS	TVD Reference:	RKB=25' @ 2952.40ft
Project:	PRD NM DIRECTIONAL PLANS (NAD 1983)	MD Reference:	RKB=25' @ 2952.40ft
Site:	Heads CC 9_4	North Reference:	Grid
Well:	Heads CC 9_4 Federal Com 37H	Survey Calculation Method:	Minimum Curvature
Wellbore:	Wellbore #1		
Design:	Permitting Plan		

Planned Survey									
Measured Depth (ft)	Inclination (°)	Azimuth (°)	Vertical Depth (ft)	+N/-S (ft)	+E/-W (ft)	Vertical Section (ft)	Dogleg Rate (°/100ft)	Build Rate (°/100ft)	Turn Rate (°/100ft)
0.00	0.00	0.00	0.00	0.00	0.00	0.00	0.00	0.00	0.00
100.00	0.00	0.00	100.00	0.00	0.00	0.00	0.00	0.00	0.00
200.00	0.00	0.00	200.00	0.00	0.00	0.00	0.00	0.00	0.00
300.00	0.00	0.00	300.00	0.00	0.00	0.00	0.00	0.00	0.00
400.00	0.00	0.00	400.00	0.00	0.00	0.00	0.00	0.00	0.00
500.00	0.00	0.00	500.00	0.00	0.00	0.00	0.00	0.00	0.00
600.00	0.00	0.00	600.00	0.00	0.00	0.00	0.00	0.00	0.00
700.00	0.00	0.00	700.00	0.00	0.00	0.00	0.00	0.00	0.00
800.00	0.00	0.00	800.00	0.00	0.00	0.00	0.00	0.00	0.00
900.00	0.00	0.00	900.00	0.00	0.00	0.00	0.00	0.00	0.00
1,000.00	0.00	0.00	1,000.00	0.00	0.00	0.00	0.00	0.00	0.00
1,100.00	0.00	0.00	1,100.00	0.00	0.00	0.00	0.00	0.00	0.00
1,200.00	0.00	0.00	1,200.00	0.00	0.00	0.00	0.00	0.00	0.00
1,300.00	0.00	0.00	1,300.00	0.00	0.00	0.00	0.00	0.00	0.00
1,400.00	0.00	0.00	1,400.00	0.00	0.00	0.00	0.00	0.00	0.00
1,500.00	0.00	0.00	1,500.00	0.00	0.00	0.00	0.00	0.00	0.00
1,600.00	0.00	0.00	1,600.00	0.00	0.00	0.00	0.00	0.00	0.00
1,700.00	0.00	0.00	1,700.00	0.00	0.00	0.00	0.00	0.00	0.00
1,800.00	0.00	0.00	1,800.00	0.00	0.00	0.00	0.00	0.00	0.00
1,900.00	0.00	0.00	1,900.00	0.00	0.00	0.00	0.00	0.00	0.00
2,000.00	0.00	0.00	2,000.00	0.00	0.00	0.00	0.00	0.00	0.00
2,100.00	0.00	0.00	2,100.00	0.00	0.00	0.00	0.00	0.00	0.00
2,200.00	0.00	0.00	2,200.00	0.00	0.00	0.00	0.00	0.00	0.00
2,300.00	0.00	0.00	2,300.00	0.00	0.00	0.00	0.00	0.00	0.00
2,400.00	0.00	0.00	2,400.00	0.00	0.00	0.00	0.00	0.00	0.00
2,500.00	0.00	0.00	2,500.00	0.00	0.00	0.00	0.00	0.00	0.00
2,600.00	0.00	0.00	2,600.00	0.00	0.00	0.00	0.00	0.00	0.00
2,700.00	0.00	0.00	2,700.00	0.00	0.00	0.00	0.00	0.00	0.00
2,800.00	0.00	0.00	2,800.00	0.00	0.00	0.00	0.00	0.00	0.00
2,900.00	0.00	0.00	2,900.00	0.00	0.00	0.00	0.00	0.00	0.00
3,000.00	0.00	0.00	3,000.00	0.00	0.00	0.00	0.00	0.00	0.00
3,100.00	0.00	0.00	3,100.00	0.00	0.00	0.00	0.00	0.00	0.00
3,200.00	0.00	0.00	3,200.00	0.00	0.00	0.00	0.00	0.00	0.00
3,300.00	0.00	0.00	3,300.00	0.00	0.00	0.00	0.00	0.00	0.00
3,400.00	0.00	0.00	3,400.00	0.00	0.00	0.00	0.00	0.00	0.00
3,500.00	0.00	0.00	3,500.00	0.00	0.00	0.00	0.00	0.00	0.00
3,600.00	0.00	0.00	3,600.00	0.00	0.00	0.00	0.00	0.00	0.00
3,700.00	0.00	0.00	3,700.00	0.00	0.00	0.00	0.00	0.00	0.00
3,800.00	0.00	0.00	3,800.00	0.00	0.00	0.00	0.00	0.00	0.00
3,900.00	0.00	0.00	3,900.00	0.00	0.00	0.00	0.00	0.00	0.00
4,000.00	0.00	0.00	4,000.00	0.00	0.00	0.00	0.00	0.00	0.00
4,100.00	0.00	0.00	4,100.00	0.00	0.00	0.00	0.00	0.00	0.00
4,200.00	0.00	0.00	4,200.00	0.00	0.00	0.00	0.00	0.00	0.00
4,300.00	0.00	0.00	4,300.00	0.00	0.00	0.00	0.00	0.00	0.00
4,400.00	0.00	0.00	4,400.00	0.00	0.00	0.00	0.00	0.00	0.00
4,500.00	0.00	0.00	4,500.00	0.00	0.00	0.00	0.00	0.00	0.00
4,600.00	0.00	0.00	4,600.00	0.00	0.00	0.00	0.00	0.00	0.00
4,700.00	0.00	0.00	4,700.00	0.00	0.00	0.00	0.00	0.00	0.00
4,800.00	0.00	0.00	4,800.00	0.00	0.00	0.00	0.00	0.00	0.00
4,900.00	0.00	0.00	4,900.00	0.00	0.00	0.00	0.00	0.00	0.00
5,000.00	0.00	0.00	5,000.00	0.00	0.00	0.00	0.00	0.00	0.00
5,100.00	0.00	0.00	5,100.00	0.00	0.00	0.00	0.00	0.00	0.00
5,200.00	0.00	0.00	5,200.00	0.00	0.00	0.00	0.00	0.00	0.00
5,300.00	0.00	0.00	5,300.00	0.00	0.00	0.00	0.00	0.00	0.00
5,400.00	0.00	0.00	5,400.00	0.00	0.00	0.00	0.00	0.00	0.00

OXY

Planning Report

Database:	HOPSPP	Local Co-ordinate Reference:	Well Heads CC 9_4 Federal Com 37H
Company:	ENGINEERING DESIGNS	TVD Reference:	RKB=25' @ 2952.40ft
Project:	PRD NM DIRECTIONAL PLANS (NAD 1983)	MD Reference:	RKB=25' @ 2952.40ft
Site:	Heads CC 9_4	North Reference:	Grid
Well:	Heads CC 9_4 Federal Com 37H	Survey Calculation Method:	Minimum Curvature
Wellbore:	Wellbore #1		
Design:	Permitting Plan		

Planned Survey									
Measured Depth (ft)	Inclination (°)	Azimuth (°)	Vertical Depth (ft)	+N/-S (ft)	+E/-W (ft)	Vertical Section (ft)	Dogleg Rate (°/100ft)	Build Rate (°/100ft)	Turn Rate (°/100ft)
5,500.00	0.00	0.00	5,500.00	0.00	0.00	0.00	0.00	0.00	0.00
5,600.00	0.00	0.00	5,600.00	0.00	0.00	0.00	0.00	0.00	0.00
5,700.00	0.00	0.00	5,700.00	0.00	0.00	0.00	0.00	0.00	0.00
5,800.00	0.00	0.00	5,800.00	0.00	0.00	0.00	0.00	0.00	0.00
5,900.00	0.00	0.00	5,900.00	0.00	0.00	0.00	0.00	0.00	0.00
6,000.00	0.00	0.00	6,000.00	0.00	0.00	0.00	0.00	0.00	0.00
6,100.00	0.00	0.00	6,100.00	0.00	0.00	0.00	0.00	0.00	0.00
6,200.00	0.00	0.00	6,200.00	0.00	0.00	0.00	0.00	0.00	0.00
6,300.00	0.00	0.00	6,300.00	0.00	0.00	0.00	0.00	0.00	0.00
6,400.00	0.00	0.00	6,400.00	0.00	0.00	0.00	0.00	0.00	0.00
6,500.00	0.00	0.00	6,500.00	0.00	0.00	0.00	0.00	0.00	0.00
6,600.00	0.00	0.00	6,600.00	0.00	0.00	0.00	0.00	0.00	0.00
6,700.00	0.00	0.00	6,700.00	0.00	0.00	0.00	0.00	0.00	0.00
6,800.00	0.00	0.00	6,800.00	0.00	0.00	0.00	0.00	0.00	0.00
6,900.00	0.00	0.00	6,900.00	0.00	0.00	0.00	0.00	0.00	0.00
7,000.00	0.00	0.00	7,000.00	0.00	0.00	0.00	0.00	0.00	0.00
7,100.00	0.00	0.00	7,100.00	0.00	0.00	0.00	0.00	0.00	0.00
7,200.00	0.00	0.00	7,200.00	0.00	0.00	0.00	0.00	0.00	0.00
7,300.00	0.00	0.00	7,300.00	0.00	0.00	0.00	0.00	0.00	0.00
7,400.00	0.00	0.00	7,400.00	0.00	0.00	0.00	0.00	0.00	0.00
7,500.00	0.00	0.00	7,500.00	0.00	0.00	0.00	0.00	0.00	0.00
7,600.00	0.00	0.00	7,600.00	0.00	0.00	0.00	0.00	0.00	0.00
7,700.00	0.00	0.00	7,700.00	0.00	0.00	0.00	0.00	0.00	0.00
7,800.00	0.00	0.00	7,800.00	0.00	0.00	0.00	0.00	0.00	0.00
7,828.00	0.00	0.00	7,828.00	0.00	0.00	0.00	0.00	0.00	0.00
7,900.00	0.72	5.80	7,900.00	0.45	0.05	0.45	1.00	1.00	0.00
8,000.00	1.72	5.80	7,999.97	2.57	0.26	2.57	1.00	1.00	0.00
8,100.00	2.72	5.80	8,099.90	6.42	0.65	6.42	1.00	1.00	0.00
8,200.00	3.72	5.80	8,199.74	12.01	1.22	12.01	1.00	1.00	0.00
8,300.00	4.72	5.80	8,299.47	19.33	1.96	19.33	1.00	1.00	0.00
8,400.00	5.72	5.80	8,399.05	28.38	2.88	28.38	1.00	1.00	0.00
8,500.00	6.72	5.80	8,498.46	39.16	3.98	39.16	1.00	1.00	0.00
8,600.00	7.72	5.80	8,597.67	51.66	5.25	51.66	1.00	1.00	0.00
8,700.00	8.72	5.80	8,696.64	65.89	6.69	65.88	1.00	1.00	0.00
8,800.00	9.72	5.80	8,795.34	81.83	8.31	81.82	1.00	1.00	0.00
8,828.00	10.00	5.80	8,822.93	86.60	8.80	86.59	1.00	1.00	0.00
8,900.00	10.00	5.80	8,893.84	99.04	10.06	99.03	0.00	0.00	0.00
9,000.00	10.00	5.80	8,992.32	116.31	11.81	116.30	0.00	0.00	0.00
9,100.00	10.00	5.80	9,090.80	133.59	13.57	133.58	0.00	0.00	0.00
9,200.00	10.00	5.80	9,189.28	150.87	15.32	150.85	0.00	0.00	0.00
9,300.00	10.00	5.80	9,287.76	168.14	17.08	168.12	0.00	0.00	0.00
9,400.00	10.00	5.80	9,386.24	185.42	18.83	185.40	0.00	0.00	0.00
9,500.00	10.00	5.80	9,484.72	202.69	20.59	202.67	0.00	0.00	0.00
9,600.00	10.00	5.80	9,583.20	219.97	22.34	219.95	0.00	0.00	0.00
9,700.00	10.00	5.80	9,681.68	237.25	24.10	237.22	0.00	0.00	0.00
9,800.00	10.00	5.80	9,780.16	254.52	25.85	254.50	0.00	0.00	0.00
9,900.00	10.00	5.80	9,878.64	271.80	27.61	271.77	0.00	0.00	0.00
10,000.00	10.00	5.80	9,977.13	289.07	29.36	289.04	0.00	0.00	0.00
10,100.00	10.00	5.80	10,075.61	306.35	31.12	306.32	0.00	0.00	0.00
10,200.00	10.00	5.80	10,174.09	323.63	32.87	323.59	0.00	0.00	0.00
10,276.53	10.00	5.80	10,249.45	336.85	34.22	336.81	0.00	0.00	0.00
10,300.00	12.34	4.62	10,272.48	341.37	34.62	341.34	10.00	9.95	-5.03
10,400.00	22.31	2.33	10,367.82	371.07	36.26	371.03	10.00	9.98	-2.29
10,500.00	32.31	1.41	10,456.56	416.86	37.69	416.83	10.00	9.99	-0.92
10,600.00	42.30	0.89	10,536.01	477.38	38.88	477.34	10.00	10.00	-0.52

OXY

Planning Report

Database:	HOPSPP	Local Co-ordinate Reference:	Well Heads CC 9_4 Federal Com 37H
Company:	ENGINEERING DESIGNS	TVD Reference:	RKB=25' @ 2952.40ft
Project:	PRD NM DIRECTIONAL PLANS (NAD 1983)	MD Reference:	RKB=25' @ 2952.40ft
Site:	Heads CC 9_4	North Reference:	Grid
Well:	Heads CC 9_4 Federal Com 37H	Survey Calculation Method:	Minimum Curvature
Wellbore:	Wellbore #1		
Design:	Permitting Plan		

Planned Survey									
Measured Depth (ft)	Inclination (°)	Azimuth (°)	Vertical Depth (ft)	+N/-S (ft)	+E/-W (ft)	Vertical Section (ft)	Dogleg Rate (°/100ft)	Build Rate (°/100ft)	Turn Rate (°/100ft)
10,700.00	52.30	0.54	10,603.74	550.77	39.78	550.73	10.00	10.00	-0.35
10,800.00	62.30	0.28	10,657.70	634.81	40.37	634.77	10.00	10.00	-0.27
10,900.00	72.29	0.06	10,696.25	726.94	40.64	726.90	10.00	10.00	-0.22
11,000.00	82.29	359.86	10,718.22	824.37	40.57	824.33	10.00	10.00	-0.20
11,077.10	90.00	359.72	10,723.40	901.23	40.29	901.19	10.00	10.00	-0.19
11,100.00	90.00	359.72	10,723.40	924.14	40.18	924.10	0.00	0.00	0.00
11,200.00	90.00	359.72	10,723.40	1,024.13	39.68	1,024.09	0.00	0.00	0.00
11,300.00	90.00	359.72	10,723.40	1,124.13	39.19	1,124.09	0.00	0.00	0.00
11,400.00	90.00	359.72	10,723.40	1,224.13	38.70	1,224.09	0.00	0.00	0.00
11,500.00	90.00	359.72	10,723.40	1,324.13	38.20	1,324.09	0.00	0.00	0.00
11,600.00	90.00	359.72	10,723.40	1,424.13	37.71	1,424.09	0.00	0.00	0.00
11,700.00	90.00	359.72	10,723.40	1,524.13	37.22	1,524.09	0.00	0.00	0.00
11,800.00	90.00	359.72	10,723.40	1,624.13	36.72	1,624.09	0.00	0.00	0.00
11,900.00	90.00	359.72	10,723.40	1,724.13	36.23	1,724.09	0.00	0.00	0.00
12,000.00	90.00	359.72	10,723.40	1,824.13	35.74	1,824.09	0.00	0.00	0.00
12,100.00	90.00	359.72	10,723.40	1,924.12	35.24	1,924.09	0.00	0.00	0.00
12,200.00	90.00	359.72	10,723.40	2,024.12	34.75	2,024.09	0.00	0.00	0.00
12,300.00	90.00	359.72	10,723.40	2,124.12	34.26	2,124.09	0.00	0.00	0.00
12,400.00	90.00	359.72	10,723.40	2,224.12	33.77	2,224.09	0.00	0.00	0.00
12,500.00	90.00	359.72	10,723.40	2,324.12	33.27	2,324.08	0.00	0.00	0.00
12,600.00	90.00	359.72	10,723.40	2,424.12	32.78	2,424.08	0.00	0.00	0.00
12,700.00	90.00	359.72	10,723.40	2,524.12	32.29	2,524.08	0.00	0.00	0.00
12,800.00	90.00	359.72	10,723.40	2,624.12	31.79	2,624.08	0.00	0.00	0.00
12,900.00	90.00	359.72	10,723.40	2,724.11	31.30	2,724.08	0.00	0.00	0.00
13,000.00	90.00	359.72	10,723.40	2,824.11	30.81	2,824.08	0.00	0.00	0.00
13,100.00	90.00	359.72	10,723.40	2,924.11	30.31	2,924.08	0.00	0.00	0.00
13,200.00	90.00	359.72	10,723.40	3,024.11	29.82	3,024.08	0.00	0.00	0.00
13,300.00	90.00	359.72	10,723.40	3,124.11	29.33	3,124.08	0.00	0.00	0.00
13,400.00	90.00	359.72	10,723.40	3,224.11	28.84	3,224.08	0.00	0.00	0.00
13,500.00	90.00	359.72	10,723.40	3,324.11	28.34	3,324.08	0.00	0.00	0.00
13,600.00	90.00	359.72	10,723.40	3,424.11	27.85	3,424.08	0.00	0.00	0.00
13,700.00	90.00	359.72	10,723.40	3,524.10	27.36	3,524.08	0.00	0.00	0.00
13,800.00	90.00	359.72	10,723.40	3,624.10	26.86	3,624.07	0.00	0.00	0.00
13,900.00	90.00	359.72	10,723.40	3,724.10	26.37	3,724.07	0.00	0.00	0.00
14,000.00	90.00	359.72	10,723.40	3,824.10	25.88	3,824.07	0.00	0.00	0.00
14,100.00	90.00	359.72	10,723.40	3,924.10	25.38	3,924.07	0.00	0.00	0.00
14,200.00	90.00	359.72	10,723.40	4,024.10	24.89	4,024.07	0.00	0.00	0.00
14,300.00	90.00	359.72	10,723.40	4,124.10	24.40	4,124.07	0.00	0.00	0.00
14,400.00	90.00	359.72	10,723.40	4,224.10	23.91	4,224.07	0.00	0.00	0.00
14,500.00	90.00	359.72	10,723.40	4,324.09	23.41	4,324.07	0.00	0.00	0.00
14,600.00	90.00	359.72	10,723.40	4,424.09	22.92	4,424.07	0.00	0.00	0.00
14,700.00	90.00	359.72	10,723.40	4,524.09	22.43	4,524.07	0.00	0.00	0.00
14,800.00	90.00	359.72	10,723.40	4,624.09	21.93	4,624.07	0.00	0.00	0.00
14,900.00	90.00	359.72	10,723.40	4,724.09	21.44	4,724.07	0.00	0.00	0.00
15,000.00	90.00	359.72	10,723.40	4,824.09	20.95	4,824.07	0.00	0.00	0.00
15,100.00	90.00	359.72	10,723.40	4,924.09	20.45	4,924.06	0.00	0.00	0.00
15,200.00	90.00	359.72	10,723.40	5,024.09	19.96	5,024.06	0.00	0.00	0.00
15,300.00	90.00	359.72	10,723.40	5,124.09	19.47	5,124.06	0.00	0.00	0.00
15,400.00	90.00	359.72	10,723.40	5,224.08	18.97	5,224.06	0.00	0.00	0.00
15,500.00	90.00	359.72	10,723.40	5,324.08	18.48	5,324.06	0.00	0.00	0.00
15,600.00	90.00	359.72	10,723.40	5,424.08	17.99	5,424.06	0.00	0.00	0.00
15,700.00	90.00	359.72	10,723.40	5,524.08	17.50	5,524.06	0.00	0.00	0.00
15,800.00	90.00	359.72	10,723.40	5,624.08	17.00	5,624.06	0.00	0.00	0.00
15,900.00	90.00	359.72	10,723.40	5,724.08	16.51	5,724.06	0.00	0.00	0.00
16,000.00	90.00	359.72	10,723.40	5,824.08	16.02	5,824.06	0.00	0.00	0.00

OXY

Planning Report

Database:	HOPSP	Local Co-ordinate Reference:	Well Heads CC 9_4 Federal Com 37H
Company:	ENGINEERING DESIGNS	TVD Reference:	RKB=25' @ 2952.40ft
Project:	PRD NM DIRECTIONAL PLANS (NAD 1983)	MD Reference:	RKB=25' @ 2952.40ft
Site:	Heads CC 9_4	North Reference:	Grid
Well:	Heads CC 9_4 Federal Com 37H	Survey Calculation Method:	Minimum Curvature
Wellbore:	Wellbore #1		
Design:	Permitting Plan		

Planned Survey									
Measured Depth (ft)	Inclination (°)	Azimuth (°)	Vertical Depth (ft)	+N/-S (ft)	+E/-W (ft)	Vertical Section (ft)	Dogleg Rate (°/100ft)	Build Rate (°/100ft)	Turn Rate (°/100ft)
16,100.00	90.00	359.72	10,723.40	5,924.08	15.52	5,924.06	0.00	0.00	0.00
16,200.00	90.00	359.72	10,723.40	6,024.07	15.03	6,024.06	0.00	0.00	0.00
16,300.00	90.00	359.72	10,723.40	6,124.07	14.54	6,124.06	0.00	0.00	0.00
16,400.00	90.00	359.72	10,723.40	6,224.07	14.04	6,224.05	0.00	0.00	0.00
16,500.00	90.00	359.72	10,723.40	6,324.07	13.55	6,324.05	0.00	0.00	0.00
16,600.00	90.00	359.72	10,723.40	6,424.07	13.06	6,424.05	0.00	0.00	0.00
16,700.00	90.00	359.72	10,723.40	6,524.07	12.57	6,524.05	0.00	0.00	0.00
16,800.00	90.00	359.72	10,723.40	6,624.07	12.07	6,624.05	0.00	0.00	0.00
16,900.00	90.00	359.72	10,723.40	6,724.07	11.58	6,724.05	0.00	0.00	0.00
17,000.00	90.00	359.72	10,723.40	6,824.06	11.09	6,824.05	0.00	0.00	0.00
17,100.00	90.00	359.72	10,723.40	6,924.06	10.59	6,924.05	0.00	0.00	0.00
17,200.00	90.00	359.72	10,723.40	7,024.06	10.10	7,024.05	0.00	0.00	0.00
17,300.00	90.00	359.72	10,723.40	7,124.06	9.61	7,124.05	0.00	0.00	0.00
17,400.00	90.00	359.72	10,723.40	7,224.06	9.11	7,224.05	0.00	0.00	0.00
17,500.00	90.00	359.72	10,723.40	7,324.06	8.62	7,324.05	0.00	0.00	0.00
17,600.00	90.00	359.72	10,723.40	7,424.06	8.13	7,424.05	0.00	0.00	0.00
17,700.00	90.00	359.72	10,723.40	7,524.06	7.64	7,524.04	0.00	0.00	0.00
17,800.00	90.00	359.72	10,723.40	7,624.05	7.14	7,624.04	0.00	0.00	0.00
17,900.00	90.00	359.72	10,723.40	7,724.05	6.65	7,724.04	0.00	0.00	0.00
18,000.00	90.00	359.72	10,723.40	7,824.05	6.16	7,824.04	0.00	0.00	0.00
18,100.00	90.00	359.72	10,723.40	7,924.05	5.66	7,924.04	0.00	0.00	0.00
18,200.00	90.00	359.72	10,723.40	8,024.05	5.17	8,024.04	0.00	0.00	0.00
18,300.00	90.00	359.72	10,723.40	8,124.05	4.68	8,124.04	0.00	0.00	0.00
18,400.00	90.00	359.72	10,723.40	8,224.05	4.18	8,224.04	0.00	0.00	0.00
18,500.00	90.00	359.72	10,723.40	8,324.05	3.69	8,324.04	0.00	0.00	0.00
18,600.00	90.00	359.72	10,723.40	8,424.05	3.20	8,424.04	0.00	0.00	0.00
18,700.00	90.00	359.72	10,723.40	8,524.04	2.71	8,524.04	0.00	0.00	0.00
18,800.00	90.00	359.72	10,723.40	8,624.04	2.21	8,624.04	0.00	0.00	0.00
18,900.00	90.00	359.72	10,723.40	8,724.04	1.72	8,724.04	0.00	0.00	0.00
19,000.00	90.00	359.72	10,723.40	8,824.04	1.23	8,824.03	0.00	0.00	0.00
19,100.00	90.00	359.72	10,723.40	8,924.04	0.73	8,924.03	0.00	0.00	0.00
19,200.00	90.00	359.72	10,723.40	9,024.04	0.24	9,024.03	0.00	0.00	0.00
19,300.00	90.00	359.72	10,723.40	9,124.04	-0.25	9,124.03	0.00	0.00	0.00
19,400.00	90.00	359.72	10,723.40	9,224.04	-0.75	9,224.03	0.00	0.00	0.00
19,500.00	90.00	359.72	10,723.40	9,324.03	-1.24	9,324.03	0.00	0.00	0.00
19,600.00	90.00	359.72	10,723.40	9,424.03	-1.73	9,424.03	0.00	0.00	0.00
19,700.00	90.00	359.72	10,723.40	9,524.03	-2.23	9,524.03	0.00	0.00	0.00
19,800.00	90.00	359.72	10,723.40	9,624.03	-2.72	9,624.03	0.00	0.00	0.00
19,900.00	90.00	359.72	10,723.40	9,724.03	-3.21	9,724.03	0.00	0.00	0.00
20,000.00	90.00	359.72	10,723.40	9,824.03	-3.70	9,824.03	0.00	0.00	0.00
20,100.00	90.00	359.72	10,723.40	9,924.03	-4.20	9,924.03	0.00	0.00	0.00
20,200.00	90.00	359.72	10,723.40	10,024.03	-4.69	10,024.03	0.00	0.00	0.00
20,300.00	90.00	359.72	10,723.40	10,124.02	-5.18	10,124.02	0.00	0.00	0.00
20,400.00	90.00	359.72	10,723.40	10,224.02	-5.68	10,224.02	0.00	0.00	0.00
20,500.00	90.00	359.72	10,723.40	10,324.02	-6.17	10,324.02	0.00	0.00	0.00
20,600.00	90.00	359.72	10,723.40	10,424.02	-6.66	10,424.02	0.00	0.00	0.00
20,700.00	90.00	359.72	10,723.40	10,524.02	-7.16	10,524.02	0.00	0.00	0.00
20,800.00	90.00	359.72	10,723.40	10,624.02	-7.65	10,624.02	0.00	0.00	0.00
20,900.00	90.00	359.72	10,723.40	10,724.02	-8.14	10,724.02	0.00	0.00	0.00
21,000.00	90.00	359.72	10,723.40	10,824.02	-8.63	10,824.02	0.00	0.00	0.00
21,100.00	90.00	359.72	10,723.40	10,924.01	-9.13	10,924.02	0.00	0.00	0.00
21,200.00	90.00	359.72	10,723.40	11,024.01	-9.62	11,024.02	0.00	0.00	0.00
21,300.00	90.00	359.72	10,723.40	11,124.01	-10.11	11,124.02	0.00	0.00	0.00
21,400.00	90.00	359.72	10,723.40	11,224.01	-10.61	11,224.02	0.00	0.00	0.00
21,500.00	90.00	359.72	10,723.40	11,324.01	-11.10	11,324.02	0.00	0.00	0.00

OXY
Planning Report

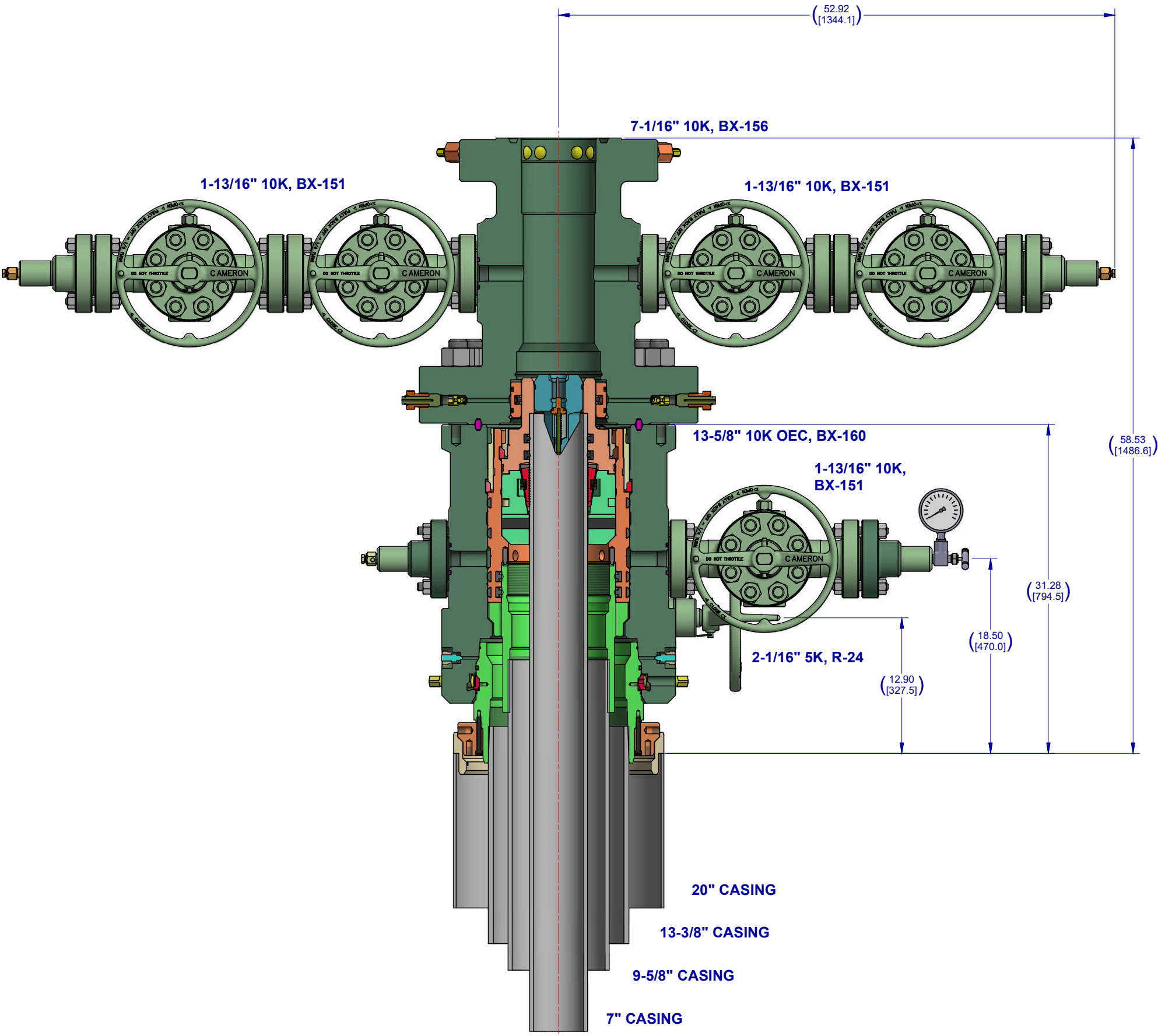
Database:	HOPSPP	Local Co-ordinate Reference:	Well Heads CC 9_4 Federal Com 37H
Company:	ENGINEERING DESIGNS	TVD Reference:	RKB=25' @ 2952.40ft
Project:	PRD NM DIRECTIONAL PLANS (NAD 1983)	MD Reference:	RKB=25' @ 2952.40ft
Site:	Heads CC 9_4	North Reference:	Grid
Well:	Heads CC 9_4 Federal Com 37H	Survey Calculation Method:	Minimum Curvature
Wellbore:	Wellbore #1		
Design:	Permitting Plan		

Planned Survey									
Measured Depth (ft)	Inclination (°)	Azimuth (°)	Vertical Depth (ft)	+N/-S (ft)	+E/-W (ft)	Vertical Section (ft)	Dogleg Rate (°/100ft)	Build Rate (°/100ft)	Turn Rate (°/100ft)
21,561.10	90.00	359.72	10,723.40	11,385.11	-11.40	11,385.12	0.00	0.00	0.00

Design Targets									
Target Name	Dip Angle (°)	Dip Dir. (°)	TVD (ft)	+N/-S (ft)	+E/-W (ft)	Northing (usft)	Easting (usft)	Latitude	Longitude
- hit/miss target									
- Shape									
FTP (Heads CC 9_4	0.00	0.01	10,723.40	892.27	39.20	445,805.30	646,720.60	32.225136	-103.992541
- plan misses target center by 1.13ft at 11068.15ft MD (10723.33 TVD, 892.29 N, 40.33 E)									
- Point									
PBHL (Heads CC 9_4	0.00	0.01	10,723.40	11,385.11	-11.40	456,297.30	646,670.00	32.253977	-103.992597
- plan hits target center									
- Point									

Formations						
Measured Depth (ft)	Vertical Depth (ft)	Name	Lithology	Dip (°)	Dip Direction (°)	
130.40	130.40	RUSTLER				
641.40	641.40	SALADO				
1,313.40	1,313.40	CASTILE				
2,884.40	2,884.40	DELAWARE				
2,943.40	2,943.40	BELL CANYON				
3,785.40	3,785.40	CHERRY CANYON				
5,032.40	5,032.40	BRUSHY CANYON				
6,614.40	6,614.40	BONE SPRING				
7,622.40	7,622.40	BONE SPRING 1ST				
8,440.57	8,439.40	BONE SPRING 2ND				
9,562.63	9,546.40	BONE SPRING 3RD				
9,935.29	9,913.40	WOLFCAMP				
10,068.31	10,044.40	WOLFCAMP A				


Plan Annotations				
Measured Depth (ft)	Vertical Depth (ft)	Local Coordinates		Comment
		+N/-S (ft)	+E/-W (ft)	
7,828.00	7,828.00	0.00	0.00	Build 1°/100'
8,828.00	8,822.93	86.60	8.80	Hold 10° Tangent
10,276.53	10,249.45	336.85	34.22	KOP, Build & Turn 10°/100'
11,077.10	10,723.40	901.24	40.29	Landing Point
21,561.10	10,723.40	11,385.11	-11.40	TD at 21561.10' MD



Notes:

1. THIS IS A PROPOSAL DRAWING AND DIMENSIONS SHOWN ARE SUBJECT TO CHANGE DURING THE FINAL DESIGN PROCESS.

2. DIGITALLY ENABLED SOLUTIONS, CHOKES AND ESD'S AVAILABLE ON REQUEST

CONFIDENTIAL								
SURFACE TREATMENT	DO NOT SCALE		 CAMERON A Schlumberger Company	SURFACE SYSTEMS				
MATERIAL & HEAT TREAT	DRAWN BY:	DATE	OXY 13-5/8" 10K ADAPT 20" X 13-3/8" X 9-5/8" X 7"					
	D. GOTTUNG	18 Feb 22						
	CHECKED BY:	DATE						
	D. GOTTUNG	18 Feb 22						
ESTIMATED WEIGHT:	APPROVED BY:	DATE	SD-053434-94-12					
	D. GOTTUNG	18 Feb 22						
	6115.068 LBS	INITIAL USE B/M:					SHEET	REV:
	2773.748 KG						1 of 1	01
			INVENTOR: D					



Project: PRD NM DIRECTIONAL PLANS (NAD 1983)
 Site: Heads CC 9_4
 Well: Heads CC 9_4 Federal Com 37H
 Wellbore: Wellbore #1
 Design: Permitting Plan

PROJECT DETAILS: NM DIRECTIONAL PLANS (NAD 1983)

Geodetic System: US State Plane 1983
 Datum: North American Datum 1983
 Ellipsoid: GRS 1980
 Zone: New Mexico Eastern Zone

System Datum: Mean Sea Level

WELL DETAILS: Heads CC 9_4 Federal Com 37H

+N/-S	+E/-W	Northing	Ground Level: Easting	2927.40	Latitude	Longitude
0.00	0.00	444913.10	646681.40		32.222684	-103.992676

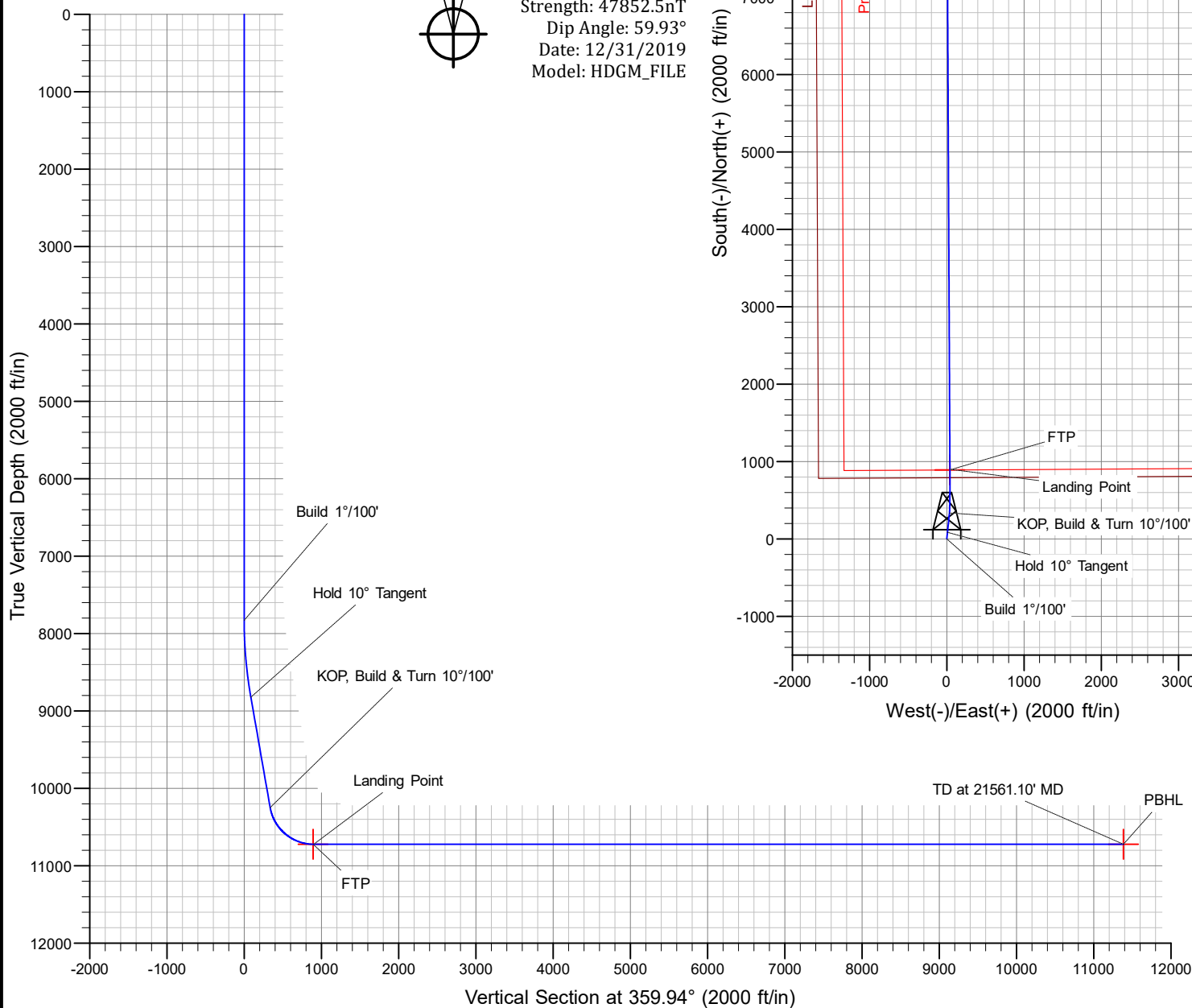
SECTION DETAILS

MD	Inc	Azi	TVD	+N/-S	+E/-W	Dleg	TFace	Vsect	Annotation
0.00	0.00	0.00	0.00	0.00	0.00	0.00	0.00	0.00	
7828.00	0.00	0.00	7828.00	0.00	0.00	0.00	0.00	0.00	Build 1°/100'
8828.00	10.00	5.80	8822.93	86.60	8.80	1.00	5.80	86.59	Hold 10° Tangent
10276.53	10.00	5.80	10249.45	336.85	34.22	0.00	0.00	336.81	KOP, Build & Turn 10°/100'
11077.10	90.00	359.72	10723.40	901.23	40.29	10.00	-6.18	901.19	Landing Point
21561.10	90.00	359.72	10723.40	11385.11	-11.40	0.00	0.00	11385.12	TD at 21561.10' MD



Azimuths to Grid North
 True North: -0.18°
 Magnetic North: 6.72°

Magnetic Field
 Strength: 47852.5nT
 Dip Angle: 59.93°
 Date: 12/31/2019
 Model: HDGM_FILE



OXY USA Inc
APD ATTACHMENT: SPUDDER RIG DATA

OPERATOR NAME / NUMBER: OXY USA Inc

1. SUMMARY OF REQUEST:

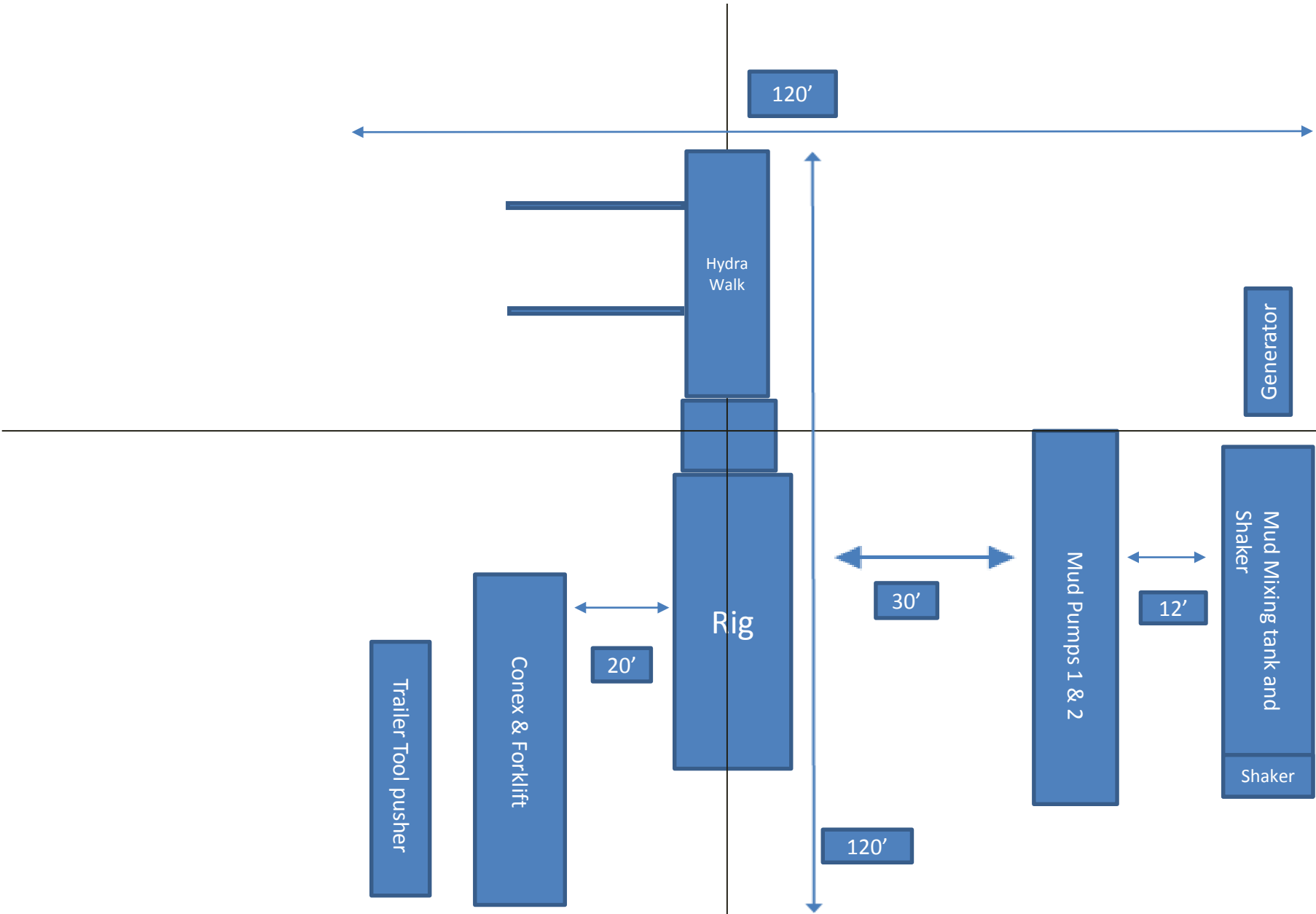
Oxy USA respectfully requests approval for the following operations for the surface hole in the drill plan:

1. Utilize a spudder rig to pre-set surface casing for time and cost savings.

2. Description of Operations

1. Spudder rig will move in to drill the surface hole and pre-set surface casing on the well.
 - a. After drilling the surface hole section, the spudder rig will run casing and cement following all of the applicable rules and regulations (OnShore Order 2, all COAs and NMOCD regulations).
 - b. The spudder rig will utilize fresh water-based mud to drill the surface hole to TD. Solids control will be handled entirely on a closed loop basis. No earth pits will be used.
2. The wellhead will be installed and tested as soon as the surface casing is cut off and the WOC time has been reached.
3. A blind flange at the same pressure rating as the wellhead will be installed to seal the wellbore. Pressure will be monitored with needle valves installed on two wingvalves.
 - a. A means for intervention will be maintained while the drilling rig is not over the well.
4. Spudder rig operations are expected to take 2-3 days per well on the pad.
5. The BLM will be contacted and notified 24 hours prior to commencing spudder rig operations.
6. Drilling operations will begin with a larger rig and a BOP stack equal to or greater than the pressure rating that was permitted will be nipped up and tested on the wellhead before drilling operations resume on each well.
 - a. The larger rig will move back onto the location within 90 days from the point at which the wells are secured and the spudder rig is moved off location.
 - b. The BLM will be contacted / notified 24 hours before the larger rig moves back on the pre-set locations.
7. Oxy will have supervision on the rig to ensure compliance with all BLM and NMOCD regulations and to oversee operations.
8. Once the rig is removed, Oxy will secure the wellhead area by placing a guard rail around the cellar area.

Spudder Rig Layout





TenarisHydril Wedge 425[®]



Coupling	Pipe Body
Grade: P110-CY	Grade: P110-CY
Body: White	1st Band: White
1st Band: Grey	2nd Band: Grey
2nd Band: -	3rd Band: -
3rd Band: -	4th Band: -
	5th Band: -
	6th Band: -

Outside Diameter	5.500 in.	Wall Thickness	0.361 in.	Grade	P110-CY
Min. Wall Thickness	87.50 %	Pipe Body Drift	API Standard	Type	Casing
Connection OD Option	REGULAR				

Pipe Body Data

Geometry				Performance	
Nominal OD	5.500 in.	Wall Thickness	0.361 in.	Body Yield Strength	641 x1000 lb
Nominal Weight	20 lb/ft	Plain End Weight	19.83 lb/ft	Min. Internal Yield Pressure	12,640 psi
Drift	4.653 in.	OD Tolerance	API	SMYS	110,000 psi
Nominal ID	4.778 in.			Collapse Pressure	11,100 psi

Connection Data

Geometry		Performance		Make-Up Torques	
Connection OD	5.777 in.	Tension Efficiency	90 %	Minimum	15,700 ft-lb
Connection ID	4.734 in.	Joint Yield Strength	577 x1000 lb	Optimum	19,600 ft-lb
Make-up Loss	5.823 in.	Internal Pressure Capacity	12,640 psi	Maximum	21,600 ft-lb
Threads per inch	3.77	Compression Efficiency	90 %	Operation Limit Torques	
Connection OD Option	Regular	Compression Strength	577 x1000 lb	Operating Torque	29,000 ft-lb
		Max. Allowable Bending	82 °/100 ft	Yield Torque	36,000 ft-lb
		External Pressure Capacity	11,100 psi		

Notes

This connection is fully interchangeable with:
TORQ® SFW™ - 5.5 in. - 0.361 in.
Connections with Dopeless® Technology are fully compatible with the same connection in its Standard version

For the latest performance data, always visit our website: www.tenaris.com

Tenaris has issued this document for general information only, and the information in this document, including, without limitation, any pictures, drawings or designs ("Information") is not intended to constitute professional or any other type of advice or recommendation and is provided on an "as is" basis. No warranty is given. Tenaris has not independently verified any information –if any- provided by the user in connection with, or for the purpose of, the Information contained hereunder. The use of the Information is at user's own risk and Tenaris does not assume any responsibility or liability of any kind for any loss, damage or injury resulting from, or in connection with any Information contained hereunder or any use thereof. The Information in this document is subject to change or modification without notice. Tenaris's products and services are subject to Tenaris's standard terms and conditions or otherwise to the terms resulting from the respective contracts of sale or services, as the case may be, between petitioner and Tenaris. For more complete information please contact a Tenaris's representative or visit our website at www.tenaris.com . ©Tenaris 2021. All rights reserved.



TenarisHydril Wedge 441®



Coupling	Pipe Body
Grade: P110-CY	Grade: P110-CY
Body: White	1st Band: White
1st Band: Grey	2nd Band: Grey
2nd Band: -	3rd Band: -
3rd Band: -	4th Band: -
	5th Band: -
	6th Band: -

Outside Diameter	5.500 in.	Wall Thickness	0.361 in.	Grade	P110-CY
Min. Wall Thickness	87.50 %	Drift	API Standard	Type	Casing
Connection OD Option	REGULAR				

Pipe Body Data

Geometry				Performance	
Nominal OD	5.500 in.	Wall Thickness	0.361 in.	Body Yield Strength	641 x1000 lb
Nominal Weight	20 lb/ft	Plain End Weight	19.83 lb/ft	Min. Internal Yield Pressure	12,640 psi
Drift	4.653 in.	OD Tolerance	API	SMYS	110,000 psi
Nominal ID	4.778 in.			Collapse Pressure	11,100 psi

Connection Data

Geometry		Performance		Make-Up Torques	
Connection OD	5.852 in.	Tension Efficiency	81.50 %	Minimum	15,000 ft-lb
Coupling Length	8.714 in.	Joint Yield Strength	522 x1000 lb	Optimum	16,000 ft-lb
Connection ID	4.778 in.	Internal Pressure Capacity	12,640 psi	Maximum	19,200 ft-lb
Make-up Loss	3.780 in.	Compression Efficiency	81.50 %	Operation Limit Torques	
Threads per inch	3.40	Compression Strength	522 x1000 lb	Operating Torque	32,000 ft-lb
Connection OD Option	Regular	Max. Allowable Bending	71 °/100 ft	Yield Torque	38,000 ft-lb
		External Pressure Capacity	11,100 psi	Buck-On	
				Minimum	19,200 ft-lb
				Maximum	20,700 ft-lb

Notes

This connection is fully interchangeable with:
Wedge 441® - 5.5 in. - 0.304 in.
Connections with Dopeless® Technology are fully compatible with the same connection in its Standard version

For the latest performance data, always visit our website: www.tenaris.com

Tenaris has issued this document for general information only, and the information in this document, including, without limitation, any pictures, drawings or designs ("Information") is not intended to constitute professional or any other type of advice or recommendation and is provided on an "as is" basis. No warranty is given. Tenaris has not independently verified any information –if any- provided by the user in connection with, or for the purpose of, the Information contained hereunder. The use of the Information is at user's own risk and Tenaris does not assume any responsibility or liability of any kind for any loss, damage or injury resulting from, or in connection with any Information contained hereunder or any use thereof. The Information in this document is subject to change or modification without notice. Tenaris's products and services are subject to Tenaris's standard terms and conditions or otherwise to the terms resulting from the respective contracts of sale or services, as the case may be, between petitioner and Tenaris. For more complete information please contact a Tenaris's representative or visit our website at www.tenaris.com . ©Tenaris 2021. All rights reserved.



5.500" 20.00 lb/ft P110-CY
TenarisHydril Wedge 461™ Matched
Strength



Special Data Sheet
TH DS-20.0359
12 August 2020
Rev 00

Nominal OD	5.500 in.	Wall Thickness	0.361 in.	Grade	P110-CY
Min Wall Thickness	87.5%	Type	CASING	Connection OD Option	MATCHED STRENGTH

Pipe Body Data

Geometry			Performance		
Nominal OD	5.500 in.	Nominal ID	4.778 in.	Body Yield Strength	641 x 1000 lbs
Nominal Weight	20.00 lbs/ft	Wall Thickness	0.361 in.	Internal Yield	12640 psi
Standard Drift Diameter	4.653 in.	Plain End Weight	19.83 lbs/ft	SMYS	110000 psi
Special Drift Diameter	N/A	OD Tolerance	API	Collapse Pressure	11110 psi

Connection Data

Geometry		Performance		Make-up Torques	
Matched Strength OD	6.050 in.	Tension Efficiency	100%	Minimum	17000 ft-lbs
Make-up Loss	3.775 in.	Joint Yield Strength	641 x 1000 lbs	Optimum	18000 ft-lbs
Threads per in.	3.40	Internal Yield	12640 psi	Maximum	21600 ft-lbs
Connection OD Option	MATCHED STRENGTH	Compression Efficiency	100%	Operational Limit Torques	
Coupling Length	7.714 in.	Compression Strength	641 x 1000 lbs	Operating Torque	32000 ft-lbs
		Bending	92 °/100 ft	Yield Torque	38000 ft-lbs
		Collapse	11110 psi	Buck-On Torques	
				Minimum	21600 ft-lbs
				Maximum	23100 ft-lbs

Notes

*If you need to use torque values that are higher than the maximum indicated, please contact a local Tenaris technical sales representative



TenarisHydril Wedge 461®



Coupling	Pipe Body
Grade: P110-CY	Grade: P110-CY
Body: White	1st Band: White
1st Band: Grey	2nd Band: Grey
2nd Band: -	3rd Band: -
3rd Band: -	4th Band: -
	5th Band: -
	6th Band: -

Outside Diameter	7.000 in.	Wall Thickness	0.453 in.	Grade	P110-CY
Min. Wall Thickness	87.50 %	Pipe Body Drift	API Standard	Type	Casing
Connection OD Option	REGULAR				

Pipe Body Data

Geometry				Performance	
Nominal OD	7.000 in.	Wall Thickness	0.453 in.	Body Yield Strength	1025 x1000 lb
Nominal Weight	32 lb/ft	Plain End Weight	31.70 lb/ft	Min. Internal Yield Pressure	12,460 psi
Drift	5.969 in.	OD Tolerance	API	SMYS	110,000 psi
Nominal ID	6.094 in.			Collapse Pressure	10,780 psi

Connection Data

Geometry		Performance		Make-Up Torques	
Connection OD	7.750 in.	Tension Efficiency	100 %	Minimum	20,000 ft-lb
Coupling Length	8.914 in.	Joint Yield Strength	1025 x1000 lb	Optimum	21,000 ft-lb
Connection ID	6.094 in.	Internal Pressure Capacity	12,460 psi	Maximum	25,200 ft-lb
Make-up Loss	4.375 in.	Compression Efficiency	100 %	Operation Limit Torques	
Threads per inch	3.40	Compression Strength	1025 x1000 lb	Operating Torque	61,000 ft-lb
Connection OD Option	Regular	Max. Allowable Bending	72 °/100 ft	Yield Torque	72,000 ft-lb
		External Pressure Capacity	10,780 psi	Buck-On	
		Coupling Face Load	269,000 lb	Minimum	25,200 ft-lb
				Maximum	26,700 ft-lb

Notes

This connection is fully interchangeable with:
Wedge 461® - 7 in. - 0.317 / 0.362 / 0.408 in.
Connections with Dopeless® Technology are fully compatible with the same connection in its Standard version
In October 2019, TenarisHydril Wedge XP® 2.0 was renamed TenarisHydril Wedge 461™. Product dimensions and properties remain identical and both connections are fully interchangeable

For the latest performance data, always visit our website: www.tenaris.com

Tenaris has issued this document for general information only, and the information in this document, including, without limitation, any pictures, drawings or designs ("Information") is not intended to constitute professional or any other type of advice or recommendation and is provided on an "as is" basis. No warranty is given. Tenaris has not independently verified any information –if any- provided by the user in connection with, or for the purpose of, the Information contained hereunder. The use of the Information is at user's own risk and Tenaris does not assume any responsibility or liability of any kind for any loss, damage or injury resulting from, or in connection with any Information contained hereunder or any use thereof. The Information in this document is subject to change or modification without notice. Tenaris's products and services are subject to Tenaris's standard terms and conditions or otherwise to the terms resulting from the respective contracts of sale or services, as the case may be, between petitioner and Tenaris. For more complete information please contact a Tenaris's representative or visit our website at www.tenaris.com . ©Tenaris 2021. All rights reserved.

District I
1625 N. French Dr., Hobbs, NM 88240
Phone:(575) 393-6161 Fax:(575) 393-0720
District II
811 S. First St., Artesia, NM 88210
Phone:(575) 748-1283 Fax:(575) 748-9720
District III
1000 Rio Brazos Rd., Aztec, NM 87410
Phone:(505) 334-6178 Fax:(505) 334-6170
District IV
1220 S. St Francis Dr., Santa Fe, NM 87505
Phone:(505) 476-3470 Fax:(505) 476-3462

State of New Mexico
Energy, Minerals and Natural Resources
Oil Conservation Division
1220 S. St Francis Dr.
Santa Fe, NM 87505

CONDITIONS

Action 195254

CONDITIONS

Operator: OXY USA INC P.O. Box 4294 Houston, TX 772104294	OGRID: 16696
	Action Number: 195254
	Action Type: [C-103] NOI Change of Plans (C-103A)

CONDITIONS

Created By	Condition	Condition Date
kpickford	Adhere to previous NMOCD Conditions of Approval	3/13/2023