

Well Name	Well Number	US Well Number	Lease Number	Case Number	Operator
PAPA FRITAS 27-	333H	3001546578	NMNM105557	NMNM141995	DEVON
PAPA FRITAS 27-	332H	3001546579	NMNM105557	NMNM141995	DEVON
PAPA FRITAS 27-	331H	3001546580	NMNM105557	NMNM141995	DEVON

Notice of Intent

Sundry ID: 2721554

Type of Submission: Notice of Intent

Date Sundry Submitted: 03/20/2023

Date proposed operation will begin: 03/20/2023

Type of Action: APD Change

Time Sundry Submitted: 09:04

**Procedure Description:** Devon Energy Production Company, LP requests to update the pool code for the subject wells to dual pool codes of Laguna Salado; Bone Spring South (96857) and Laguna Salado; Bone Spring (96721) as well as an update to spacing. Please see the attached C-102s.

NOI Attachments

Procedure Description

- PAPAS\_FRITAS\_27\_22\_FED\_COM\_333H\_WL\_AB\_3\_17\_2023\_20230320090239.pdf
- PAPAS\_FRITAS\_27\_22\_FED\_COM\_332H\_WL\_AB\_3\_17\_2023\_20230320090140.pdf
- PAPAS\_FRITAS\_27\_22\_FED\_COM\_331H\_WL\_AB\_3\_17\_2023\_20230320090120.pdf
- OCD\_2\_pool\_codes\_20230317124826.pdf

Operator

I certify that the foregoing is true and correct. Title 18 U.S.C. Section 1001 and Title 43 U.S.C. Section 1212, make it a crime for any person knowingly and willfully to make to any department or agency of the United States any false, fictitious or fraudulent statements or representations as to any matter within its jurisdiction. Electronic submission of Sundry Notices through this system satisfies regulations requiring a

**Operator Electronic Signature:** SHAYDA OMOUMI

**Signed on:** MAR 20, 2023 09:03 AM

**Name:** DEVON ENERGY PRODUCTION COMPANY LP

**Title:** Regulatory Compliance Associate 3

**Street Address:** 333 W SHERIDAN AVE

**City:** OKLAHOMA CITY      **State:** OK

**Phone:** (405) 235-3611

**Email address:** SHAYDA.OMOUMI@DVN.COM

Field

**Representative Name:**

**Street Address:**

**City:**      **State:**      **Zip:**

**Phone:**

**Email address:**

BLM Point of Contact

**BLM POC Name:** LONG VO

**BLM POC Title:** Petroleum Engineer

**BLM POC Phone:** 5752345972

**BLM POC Email Address:** LVO@BLM.GOV

**Disposition:** Accepted

**Disposition Date:** 03/21/2023

**Signature:** Long Vo

**District I**  
1625 N. French Dr., Hobbs, NM 88240  
Phone: (575) 393-6161 Fax: (575) 393-0720

**District II**  
811 S. First St., Artesia, NM 88210  
Phone: (575) 748-1283 Fax: (575) 748-9720

**District III**  
1000 Rio Brazos Road, Aztec, NM 87410  
Phone: (505) 334-6178 Fax: (505) 334-6170

**District IV**  
1220 S. St. Francis Dr., Santa Fe, NM 87505  
Phone: (505) 476-3460 Fax: (505) 476-3462

State of New Mexico  
Energy, Minerals & Natural Resources Department  
**OIL CONSERVATION DIVISION**  
1220 South St. Francis Dr.  
Santa Fe, NM 87505

**Form C-102**  
Revised August 1, 2011

Submit one copy to  
appropriate District Office

☒ AMENDED REPORT

**WELL LOCATION AND ACREAGE DEDICATION PLAT**

<sup>1</sup> API Number 30-015-46579	<sup>2</sup> Pool Code 96721	<sup>3</sup> Pool Name LAGUNA SALADO; BONE SPRING
<sup>4</sup> Property Code 326778	<sup>5</sup> Property Name PAPAS FRITAS 27-22 FED COM	<sup>6</sup> Well Number 332H
<sup>7</sup> OGRID No. 6137	<sup>8</sup> Operator Name DEVON ENERGY PRODUCTION COMPANY, L.P.	<sup>9</sup> Elevation 3042.8'

**<sup>10</sup>Surface Location**

UL or lot no.	Section	Township	Range	Lot Idn	Feet from the	North/South line	Feet from the	East/West line	County
O	27	23-S	29-E		152	SOUTH	1822	EAST	EDDY

**<sup>11</sup>Bottom Hole Location If Different From Surface**

UL or lot no.	Section	Township	Range	Lot Idn	Feet from the	North/South line	Feet from the	East/West line	County
C	22	23-S	29-E		40	NORTH	2162	WEST	EDDY

<sup>12</sup> Dedicated Acres 640	<sup>13</sup> Joint or Infill 1 of 2 pool codes	<sup>14</sup> Consolidation Code per NMOCD	<sup>15</sup> Order No. R-21359
--------------------------------------	--	---	------------------------------------

No allowable will be assigned to this completion until all interests have been consolidated or a non-standard unit has been approved by the division.

16

**PAPAS FRITAS  
27-22 FED COM 332H**  
ELEV: 3042.8'  
LAT: 32.269009°  
LON: 103.969909°  
N: 461788.80  
E: 653664.94

**KICK OFF POINT**  
LAT: 32.268746°  
LON: 103.973768°  
N: 461689.05  
E: 652472.56

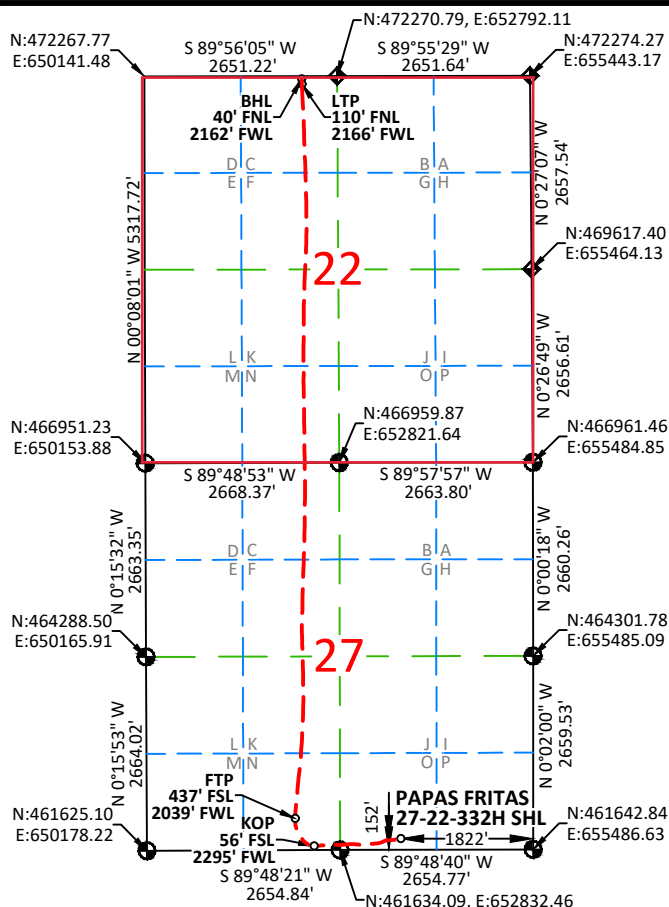
**FIRST TAKE POINT**  
LAT: 32.269792°  
LON: 103.974597°  
N: 462068.58  
E: 652215.05

**LAST TAKE POINT**  
LAT: 32.297531°  
LON: 103.974189°  
N: 472160.29  
E: 652307.41

**BOTTOM HOLE LOCATION**  
LAT: 32.297723°  
LON: 103.974201°  
N: 472230.14  
E: 652303.28

3" USGLO BRASS CAP  
ON 2.5" IRON PIPE

2" USGLO BRASS CAP  
ON 2" IRON PIPE



**<sup>17</sup>OPERATOR CERTIFICATION**

I hereby certify that the information contained herein is true and complete to the best of my knowledge and belief, and that this organization either owns a working interest or unleased mineral interest in the land including the proposed bottom hole location or has a right to drill this well at this location pursuant to a contract with an owner of such a mineral or working interest, or to a voluntary pooling agreement or a compulsory pooling order heretofore entered by the division.

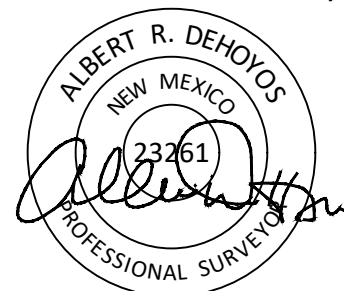
Signature: *Shayda Omoumi* Date: 3/17/2023

Printed Name: Shayda Omoumi  
E-mail Address: shayda.omoumi@dvn.com

**<sup>18</sup>SURVEYOR CERTIFICATION**

I hereby certify that the well location shown on this plat was plotted from field notes of actual surveys made by me or under my supervision, and that the same is true and correct to the best of my belief.

Date of Survey: 10/06/2020  
Signature and Seal of Professional Surveyor:



Certificate No. 23261 Albert Dehoyos  
Drawn by: JEB Checked by: ARD Date: 10/07/2020

**NOTES:**

- BEARINGS SHOWN ARE GRID BASED ON THE NEW MEXICO STATE PLANE EAST ZONE COORDINATE SYSTEM (3001), NAD 83 (2011), BASED FROM GPS OBSERVATIONS, OCCUPYING A WHS CONTROL POINT (5/8" REBAR), LOCATED AT NORTH: 456034.443, EAST: 653560.641, ELEVATION: 3101.373, DETERMINED BY AN OPUS SOLUTION ON NOVEMBER 9TH, 2018. ELEVATIONS ARE OF NAVD 88 COMPUTED USING GEOID 12B.
- DISTANCES DEPICTED HEREON ARE REPORTED AS GROUND DISTANCE IN US SURVEY FEET USING A COMBINED SCALE FACTOR OF 1.000220979
- DRILL PATH INFORMATION HAS BEEN PROVIDED TO WHS BY THE CLIENT.

**District I**  
1625 N. French Dr., Hobbs, NM 88240  
Phone: (505) 393-6161 Fax: (575) 393-0720

**District II**  
811 S. First St., Artesia, NM 88210  
Phone: (575) 748-1283 Fax: (575) 748-9720

**District III**  
1000 Rio Brazos Road, Aztec, NM 87410  
Phone: (505) 334-6178 Fax: (505) 334-6170

**District IV**  
1220 S. St. Francis Dr., Santa Fe, NM 87505  
Phone: (505) 476-3460 Fax: (505) 476-3462

State of New Mexico  
Energy, Minerals & Natural Resources Department  
**OIL CONSERVATION DIVISION**  
1220 South St. Francis Dr.  
Santa Fe, NM 87505

**Form C-102**  
Revised August 1, 2011

Submit one copy to  
appropriate District Office

☒ AMENDED REPORT

# WELL LOCATION AND ACREAGE DEDICATION PLAT

<sup>1</sup> API Number 30-015-46579		<sup>2</sup> Pool Code 96857	<sup>3</sup> Pool Name LAGUNA SALADO; BONE SPRING, SOUTH
<sup>4</sup> Property Code 326778	<sup>5</sup> Property Name PAPAS FRITAS 27-22 FED COM		<sup>6</sup> Well Number 332H
<sup>7</sup> OGRID No. 6137	<sup>8</sup> Operator Name DEVON ENERGY PRODUCTION COMPANY, L.P.		<sup>9</sup> Elevation 3042.8'

## <sup>10</sup> Surface Location

UL or lot no.	Section	Township	Range	Lot Idn	Feet from the	North/South line	Feet from the	East/West line	County
O	27	23-S	29-E		152	SOUTH	1822	EAST	EDDY

<sup>11</sup> Bottom Hole Location If Different From Surface

UL or lot no.	Section	Township	Range	Lot Idn	Feet from the	North/South line	Feet from the	East/West line	County
C	22	23-S	29-E		40	NORTH	2162	WEST	EDDY

<sup>12</sup> Dedicated Acres	<sup>13</sup> Joint or Infill	<sup>14</sup> Consolidation Code	<sup>15</sup> Order No.
640	1 of 2 pool	codes per NMOCD	R-21359

No allowable will be assigned to this completion until all interests have been consolidated or a non-standard unit has been approved by the division.

16

**PAPAS FRITAS**  
**27-22 FED COM 332H**  
 ELEV: 3042.8'  
 LAT: 32.269009°  
 LON: 103.969909°  
 N: 461788.80  
 E: 653664.94

**KICK OFF POINT**  
LAT: 32.268746°  
LON: 103.973768°  
N: 461689.05  
E: 652472.56

**FIRST TAKE POINT**  
LAT: 32.269792°  
LON: 103.974597°  
N: 462068.58  
E: 652215.05

**LAST TAKE POINT**  
LAT: 32.297531°  
LON: 103.974189°  
N: 472160.29  
E: 652307.41

**BOTTOM HOLE LOCATION**  
LAT: 32.297723°  
LON: 103.974201°  
N: 472230.14  
E: 652303.28

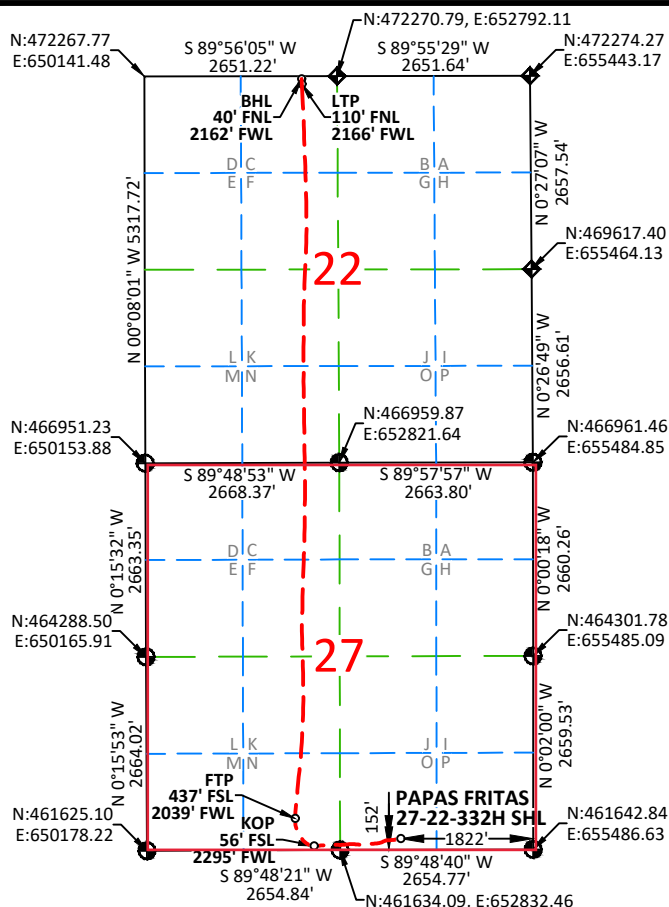
- 3" USGLO BRASS CAP  
ON 2.5" IRON PIPE
- ◆ 2" USGLO BRASS CAP  
ON 2" IRON PIPE

**NOTES:**

1. BEARINGS SHOWN ARE GRID BASED ON THE NEW MEXICO STATE PLANE EAST ZONE COORDINATE SYSTEM (3001), NAD 83 (2011), BASED FROM GPS OBSERVATIONS, OCCUPYING A WHS CONTROL POINT (5/8" REBAR), LOCATED AT NORTH: 456034.443, EAST: 653560.641, ELEVATION: 3101.373, DETERMINED BY AN OPUS SOLUTION ON NOVEMBER 9TH, 2018. ELEVATIONS ARE OF NAVD 88 COMPUTED USING GEOID 12B.

2. DISTANCES DEPICTED HEREON ARE REPORTED AS GROUND DISTANCE IN US SURVEY FEET USING A COMBINED SCALE FACTOR OF 1.000220979

3. DRILL PATH INFORMATION HAS BEEN PROVIDED TO WHS BY THE CLIENT.



## 17 OPERATOR CERTIFICATION

I hereby certify that the information contained herein is true and complete to the best of my knowledge and belief, and that this organization either owns a working interest or unleased mineral interest in the land including the proposed bottom hole location or has a right to drill this well at this location pursuant to a contract with an owner of such a mineral or working interest, or to a voluntary pooling agreement or a compulsory pooling order heretofore entered by the division.

Signature Shayda Omsouk Date 3/17/2023

Shayda Omoumi  
Printed Name  
shayda.omoumi@dvn.com  
E-mail Address

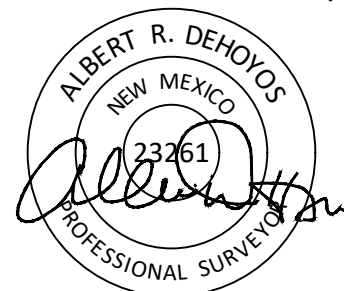
## 18 SURVEYOR CERTIFICATION

I hereby certify that the well location shown on this plat was plotted from field notes of actual surveys made by me or under my supervision, and that the same is true and correct to the best of my belief.

10/06/2020

Date of Survey

**Signature and Seal of Professional Surveyor:**



Certificate No. 23261		Albert Dehoyos
Drawn by: JEB	Checked by: ARD	Date: 10/07/2020

Intent ☐ As Drilled ☒

API # 30-015-46579		
Operator Name: DEVON ENERGY PRODUCTION COMPANY, L.P.	Property Name: PAPAS FRITAS 27-22 FED COM	Well Number 332H

## Kick Off Point (KOP)

UL N	Section 27	Township 23-S	Range 29-E	Lot	Feet 56	From N/S SOUTH	Feet 2295	From E/W WEST	County EDDY
Latitude 32.268746°					Longitude 103.973768°				NAD 83

## First Take Point (FTP)

UL N	Section 27	Township 23-S	Range 29-E	Lot	Feet 437	From N/S SOUTH	Feet 2039	From E/W WEST	County EDDY
Latitude 32.269792°					Longitude 103.974597°				NAD 83

## Last Take Point (LTP)

UL C	Section 22	Township 23-S	Range 29-E	Lot	Feet 110	From N/S NORTH	Feet 2166	From E/W WEST	County EDDY
Latitude 32.297531°					Longitude 103.974189°				NAD 83

Is this well the defining well for the Horizontal Spacing Unit? ☐ NOIs this well an infill well? ☐ YES

If infill is yes provide API if available, Operator name and well number for Defining well for Horizontal Spacing Unit.

API # 30-015-46580		
Operator Name: DEVON ENERGY PRODUCTION COMPANY, L.P.	Property Name: PAPAS FRITAS 27-22 FED COM	Well Number 331H

KZ 06/29/2018

**District I**  
1625 N. French Dr., Hobbs, NM 88240  
Phone:(575) 393-6161 Fax:(575) 393-0720  
**District II**  
811 S. First St., Artesia, NM 88210  
Phone:(575) 748-1283 Fax:(575) 748-9720  
**District III**  
1000 Rio Brazos Rd., Aztec, NM 87410  
Phone:(505) 334-6178 Fax:(505) 334-6170  
**District IV**  
1220 S. St Francis Dr., Santa Fe, NM 87505  
Phone:(505) 476-3470 Fax:(505) 476-3462

State of New Mexico  
Energy, Minerals and Natural Resources  
Oil Conservation Division  
1220 S. St Francis Dr.  
Santa Fe, NM 87505

CONDITIONS

Action 199236

CONDITIONS

Operator: DEVON ENERGY PRODUCTION COMPANY, LP 333 West Sheridan Ave. Oklahoma City, OK 73102	OGRID: 6137
	Action Number: 199236
	Action Type: [C-103] NOI Change of Plans (C-103A)

CONDITIONS

Created By	Condition	Condition Date
kpickford	• NSP Will require administrative order for non-standard spacing unit	3/21/2023
kpickford	Adhere to previous NMOCD Conditions of Approval	3/21/2023