

Form 3160-3
(June 2015)FORM APPROVED
OMB No. 1004-0137
Expires: January 31, 2018

UNITED STATES
DEPARTMENT OF THE INTERIOR
BUREAU OF LAND MANAGEMENT
APPLICATION FOR PERMIT TO DRILL OR REENTER

1a. Type of work: <input type="checkbox"/> DRILL <input type="checkbox"/> REENTER 1b. Type of Well: <input type="checkbox"/> Oil Well <input type="checkbox"/> Gas Well <input type="checkbox"/> Other 1c. Type of Completion: <input type="checkbox"/> Hydraulic Fracturing <input type="checkbox"/> Single Zone <input type="checkbox"/> Multiple Zone		5. Lease Serial No. 6. If Indian, Allottee or Tribe Name 7. If Unit or CA Agreement, Name and No. 8. Lease Name and Well No.	
2. Name of Operator		9. API Well No. 30 005 64359	
3a. Address		3b. Phone No. (include area code)	
4. Location of Well (Report location clearly and in accordance with any State requirements. *) At surface At proposed prod. zone		10. Field and Pool, or Exploratory 11. Sec., T. R. M. or Blk. and Survey or Area	
14. Distance in miles and direction from nearest town or post office*		12. County or Parish	
13. State		15. Distance from proposed* location to nearest property or lease line, ft. (Also to nearest drig. unit line, if any)	
16. No of acres in lease		17. Spacing Unit dedicated to this well	
18. Distance from proposed location* to nearest well, drilling, completed, applied for, on this lease, ft.		19. Proposed Depth	
20. BLM/BIA Bond No. in file		21. Elevations (Show whether DF, KDB, RT, GL, etc.)	
22. Approximate date work will start*		23. Estimated duration	
24. Attachments			
The following, completed in accordance with the requirements of Onshore Oil and Gas Order No. 1, and the Hydraulic Fracturing rule per 43 CFR 3162.3-3 (as applicable)			
1. Well plat certified by a registered surveyor. 2. A Drilling Plan. 3. A Surface Use Plan (if the location is on National Forest System Lands, the SUPO must be filed with the appropriate Forest Service Office).		4. Bond to cover the operations unless covered by an existing bond on file (see Item 20 above). 5. Operator certification. 6. Such other site specific information and/or plans as may be requested by the BLM.	
25. Signature		Name (Printed/Typed)	
Title		Date	
Approved by (Signature)		Name (Printed/Typed)	
Title		Office	
Application approval does not warrant or certify that the applicant holds legal or equitable title to those rights in the subject lease which would entitle the applicant to conduct operations thereon. Conditions of approval, if any, are attached.			
Title 18 U.S.C. Section 1001 and Title 43 U.S.C. Section 1212, make it a crime for any person knowingly and willfully to make to any department or agency of the United States any false, fictitious or fraudulent statements or representations as to any matter within its jurisdiction.			

(Continued on page 2)

*(Instructions on page 2)



District I

1625 N. French Dr., Hobbs, NM 88240
Phone: (575) 393-6161 Fax: (575) 393-0720

District II

811 S. First St., Artesia, NM 88210
Phone: (575) 748-1283 Fax: (575) 748-9720

District III

1000 Rio Brazos Road, Aztec, NM 87410
Phone: (505) 334-6178 Fax: (505) 334-6170

District IV

1220 S. St. Francis Dr., Santa Fe, NM 87505
Phone: (505) 476-3460 Fax: (505) 476-3462

State of New Mexico

Energy, Minerals & Natural Resources Department

OIL CONSERVATION DIVISION

1220 South St. Francis Dr.

Santa Fe, NM 87505

Form C-102

Revised August 1, 2011

Submit one copy to appropriate

District Office

☐ AMENDED REPORT

WELL LOCATION AND ACREAGE DEDICATION PLAT

¹ API Number 30 005 64359	² Pool Code 52770	³ Pool Name Round Tank; San Andres
⁴ Property Code 322479	⁵ Property Name DAWSON CREEK STATE COM	
⁷ OGRID No. 13837	⁸ Operator Name MACK ENERGY CORPORATION	⁶ Well Number 1H
		⁹ Elevation 3588.3

¹⁰ Surface Location

UL or lot no.	Section	Township	Range	Lot Idn	Feet from the	North/South line	Feet from the	East/West line	County
F	36	15 S	28 E		2399	NORTH	1454	WEST	CHAVES

¹¹ Bottom Hole Location If Different From Surface

UL or lot no.	Section	Township	Range	Lot Idn	Feet from the	North/South line	Feet from the	East/West line	County
F	25	15 S	28 E		1324	NORTH	1650	WEST	CHAVES

¹² Dedicated Acres	¹³ Joint or Infill	¹⁴ Consolidation Code	¹⁵ Order No.
200			

No allowable will be assigned to this completion until all interests have been consolidated or a non-standard unit has been approved by the division.

<p>NW CORNER SEC. 25 LAT. = 32.9942570°N LONG. = 104.0938829°W</p> <p>NMSP EAST (FT) N = 725530.56 E = 614752.22</p> <p>W/4 CORNER SEC. 25 LAT. = 32.9869876°N LONG. = 104.0938669°W</p> <p>NMSP EAST (FT) N = 722885.75 E = 614763.15</p> <p>NW CORNER SEC. 36 LAT. = 32.9797168°N LONG. = 104.0938384°W</p> <p>NMSP EAST (FT) N = 720240.47 E = 614777.92</p> <p>W/4 CORNER SEC. 36 LAT. = 32.9725723°N LONG. = 104.0938200°W</p> <p>NMSP EAST (FT) N = 717641.13 E = 614789.47</p> <p>SW CORNER SEC. 36 LAT. = 32.9654174°N LONG. = 104.0937948°W</p> <p>NMSP EAST (FT) N = 715038.00 E = 614803.13</p>		<p>S89°33'59"E 2637.60 FT S89°33'59"E 2637.60 FT</p> <p>DNF</p> <p>BOTTOM OF HOLE LAT. = 32.9905739°N LONG. = 104.0884948°W</p> <p>NMSP EAST (FT) N = 724194.33 E = 616407.34</p> <p>NOTE: LATITUDE AND LONGITUDE COORDINATES ARE SHOWN USING THE NORTH AMERICAN DATUM OF 1983 (NAD83) LISTED NEW MEXICO STATE PLANE EAST COORDINATES ARE GRID (NAD83). BASIS OF BEARING AND DISTANCES USED ARE NEW MEXICO STATE PLANE EAST COORDINATES MODIFIED TO THE SURFACE. VERTICAL DATUM NAVD88.</p> <p>1324'</p> <p>1650'</p> <p>LTP</p> <p>2399'</p> <p>FTP</p> <p>SHL</p> <p>DAWSON CREEK STATE COM 1H ELEV. = 3588.3' LAT. = 32.9731333°N (NAD83) LONG. = 104.0890814°W</p> <p>NMSP EAST (FT) N = 717848.58 E = 616242.20</p> <p>S/4 CORNER SEC. 36 LAT. = 32.9654152°N LONG. = 104.0851886°W</p> <p>NMSP EAST (FT) N = 715043.31 E = 617442.63</p> <p>S89°53'05"W 2640.18 FT N89°50'28"W 2646.03 FT</p>		<p>NE CORNER SEC. 25 LAT. = 32.9941131°N LONG. = 104.0766827°W</p> <p>NMSP EAST (FT) N = 725490.64 E = 620025.90</p> <p>E/4 CORNER SEC. 25 LAT. = 32.9869717°N LONG. = 104.0765798°W</p> <p>NMSP EAST (FT) N = 722892.47 E = 620063.79</p> <p>LAST TAKE POINT 1420' FNL, 1650' FWL LAT. = 32.9903101°N LONG. = 104.0884942°W</p> <p>NMSP EAST (FT) N = 724098.35 E = 616407.73</p> <p>NE CORNER SEC. 36 LAT. = 32.9797296°N LONG. = 104.0766964°W</p> <p>NMSP EAST (FT) N = 720257.54 E = 620034.47</p> <p>FIRST TAKE POINT 1829' FNL, 1650' FWL LAT. = 32.9747009°N LONG. = 104.0884464°W</p> <p>NMSP EAST (FT) N = 718419.36 E = 616435.60</p> <p>SE CORNER SEC. 36 LAT. = 32.9653776°N LONG. = 104.0765635°W</p> <p>NMSP EAST (FT) N = 715035.98 E = 620087.96</p>	
--	--	---	--	---	--

¹⁷ OPERATOR CERTIFICATION

I hereby certify that the information contained herein is true and complete to the best of my knowledge and belief, and that this organization either owns a working interest or unleased mineral interest in the land including the proposed bottom hole location or has a right to drill this well at this location pursuant to a contract with an owner of such a mineral or working interest, or to a voluntary pooling agreement or a compulsory pooling order heretofore entered by the division.

Deana Weaver 1/5/2021

Signature _____ Date _____

Deana Weaver

Printed Name _____

dweaver@mec.com

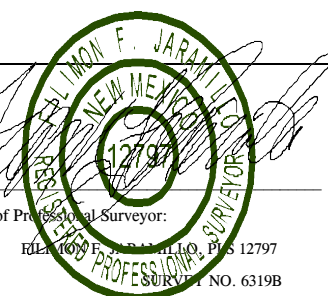
E-mail Address _____

¹⁸ SURVEYOR CERTIFICATION

I hereby certify that the well location shown on this plat was plotted from field notes of actual surveys made by me or under my supervision, and that the same is true and correct to the best of my belief.

MARCH 10, 2020

Date of Survey _____



Signature and Seal of Professional Surveyor: _____

Certificate Number: **12797**

Intent ☒ As Drilled ☐

API #

Operator Name:	Property Name:	Well Number
MACK ENERGY CORPORATION	DAWSON CREEK STATE COM	1H

Kick Off Point (KOP)

UL F	Section 36	Township 15S	Range 28E	Lot	Feet 2399	From N/S NORTH	Feet 1454	From E/W WEST	County CHAVES
Latitude 32.9731333					Longitude 104.0890814			NAD 83	

First Take Point (FTP)

UL F	Section 36	Township 15S	Range 28E	Lot	Feet 1829	From N/S NORTH	Feet 1650	From E/W WEST	County CHAVES
Latitude 32.9747009					Longitude 104.0884464			NAD 83	

Last Take Point (LTP)

UL F	Section 25	Township 15S	Range 28E	Lot	Feet 1420	From N/S NORTH	Feet 1650	From E/W WEST	County CHAVES
Latitude 32.9903101					Longitude 104.0884942			NAD 83	

Is this well the defining well for the Horizontal Spacing Unit? ☐Is this well an infill well? ☐

If infill is yes please provide API if available, Operator Name and well number for Defining well for Horizontal Spacing Unit.

API #

Operator Name:	Property Name:	Well Number

KZ 06/29/2018

Additional Operator Remarks

Location of Well

0. SHL: SENW / 2399 FNL / 1454 FWL / TWSP: 15S / RANGE: 28E / SECTION: 36 / LAT: 32.9731333 / LONG: -104.0890814 (TVD: 0 feet, MD: 0 feet)

PPP: SENW / 1829 FNL / 1650 FWL / TWSP: 15S / RANGE: 28E / SECTION: 36 / LAT: 32.9747009 / LONG: -104.0884464 (TVD: 2958 feet, MD: 3360 feet)

BHL: SENW / 1324 FNL / 1650 FWL / TWSP: 15S / RANGE: 28E / SECTION: 25 / LAT: 32.9905739 / LONG: -104.0884948 (TVD: 2897 feet, MD: 8996 feet)

BLM Point of Contact

Name: Meighan M Salas

Title: Land Law Examiner

Phone: (575) 627-0228

Email: mmsalas@blm.gov

CONFIDENTIAL

PECOS DISTRICT DRILLING OPERATIONS CONDITIONS OF APPROVAL

OPERATOR'S NAME:	Mack Energy Corporation
LEASE NO.:	NMMN-130324
WELL NAME & NO.:	Dawson Creek State Com 1H
SURFACE HOLE FOOTAGE:	2399' FNL & 1454' FWL
BOTTOM HOLE FOOTAGE:	1324' FNL & 1650' FWL Sec. 25, T. 15 S., R 28 E.
LOCATION:	Section 36, T. 15 S., R 28 E., NMPM
COUNTY:	Chaves County, New Mexico

Communitization Agreement

· The operator will submit a Communitization Agreement to the Roswell Field Office, 2909 West 2nd Street Roswell, New Mexico 88220, at least 90 days before the anticipated date of first production from a well subject to a spacing order issued by the New Mexico Oil Conservation Division. The Communitization Agreement will include the signatures of all working interest owners in all Federal and Indian leases subject to the Communitization Agreement (i.e., operating rights owners and lessees of record), or certification that the operator has obtained the written signatures of all such owners and will make those signatures available to the BLM immediately upon request.

· If the operator does not comply with this condition of approval, the BLM may take enforcement actions that include, but are not limited to, those specified in 43 CFR 3163.1.

· In addition, the well sign shall include the surface and bottom hole lease numbers. When the Communitization Agreement number is known, it shall also be on the sign.

The Gamma Ray and Neutron well logs must be run from total depth to surface and e-mailed to Chris Bolen at cbolen@blm.gov or hard copy mailed to 2909 West Second Street Roswell, NM 88201 to his attention.

The BLM is to be notified in advance for a representative to witness:

- a. Spudding well (minimum of 24 hours)
- b. Setting and/or Cementing of all casing strings (minimum of 4 hours)
- c. BOPE tests (minimum of 4 hours)

☒ **Chaves and Roosevelt Counties**

Call the Roswell Field Office, 2909 West Second St., Roswell NM 88201.
During office hours call (575) 627-0272.
After hours call (575) 627-0205.

A. Hydrogen Sulfide

1. **Hydrogen Sulfide (H₂S) monitors shall be installed prior to drilling out the surface shoe. If H₂S is detected in concentrations greater than 100 ppm, the Hydrogen Sulfide area shall meet Onshore Order 6 requirements, which includes equipment and personnel/public protection items. If Hydrogen Sulfide is encountered, provide measured values and formations to the BLM.**
2. Unless the production casing has been run and cemented or the well has been properly plugged, the drilling rig shall not be removed from over the hole without prior approval. **If the drilling rig is removed without approval – an Incident of Non-Compliance will be written and will be a “Major” violation.**
3. Floor controls are required for 3M or Greater systems. These controls will be on the rig floor, unobstructed, readily accessible to the driller and will be operational at all times during drilling and/or completion activities. Rig floor is defined as the area immediately around the rotary table; the area immediately above the substructure on which the draw works is located, this does not include the dog house or stairway area.
4. **The record of the drilling rate along with the GR/N well log run from TD to surface (horizontal well – vertical portion of hole) shall be submitted to the BLM office as well as all other logs run on the borehole 30 days from completion. If available, a digital copy of the logs is to be submitted in addition to the paper copies. The Rustler top and top and bottom of Salt are to be recorded on the Completion Report.**

B. CASING

Changes to the approved APD casing program need prior approval if the items substituted are of lesser grade or different casing size or are Non-API. The Operator can exchange the components of the proposal with that of superior strength (i.e. changing from J-55 to N-80, or from 36# to 40#). Changes to the approved cement program need prior approval if the altered cement plan has less volume or strength or if the changes are substantial (i.e. Multistage tool, ECP, etc.). The initial wellhead installed on the well will remain on the well with spools used as needed.

Centralizers required on surface casing per Onshore Order 2.III.B.1.f.

Wait on cement (WOC) for Water Basin:

After cementing but before commencing any tests, the casing string shall stand cemented under pressure until both of the following conditions have been met: 1) cement reaches a minimum compressive strength of 500 psi at the shoe, 2) until cement has been in place at least 8 hours. WOC time will be recorded in the driller's log. See individual casing strings for details regarding lead cement slurry requirements.

Provide compressive strengths including hours to reach required 500 pounds compressive strength prior to cementing each casing string. Have well specific cement details onsite prior to pumping the cement for each casing string.

No pea gravel permitted for remedial or fall back remedial without prior authorization from the BLM engineer.

Medium Cave/Karst

Possibility of lost circulation in the Base of Rustler, Queen, and San Andres formations.

1. The **13-3/8** inch surface casing shall be set at approximately **200** feet (a minimum of 25 feet into the Rustler Anhydrite and above the salt) and cemented to the surface. **If salt is encountered, set casing at least 25 feet above the salt.**
 - a. If cement does not circulate to the surface, the appropriate BLM office shall be notified and a temperature survey utilizing an electronic type temperature survey with surface log readout will be used or a cement bond log shall be run to verify the top of the cement. Temperature survey will be run a minimum of six hours after pumping cement and ideally between 8-10 hours after completing the cement job.
 - b. **Wait on cement (WOC) time for a primary cement job is to include the lead cement slurry.**
 - c. Wait on cement (WOC) time for a remedial job will be a minimum of 4 hours after bringing cement to surface or 500 pounds compressive strength, whichever is greater.
 - d. If cement falls back, remedial cementing will be done prior to drilling out that string.

2. The minimum required fill of cement behind the **9-5/8** inch intermediate casing is:

☒ Cement to surface. If cement does not circulate see B.1.a, c-d above. **Wait on cement (WOC) time for a primary cement job is to include the lead cement slurry due to cave/karst.**

Centralizers required on horizontal leg, must be type for horizontal service and a minimum of one every other joint.

3. The minimum required fill of cement behind the **7 X 5-1/2** inch production casing is:

☒ Cement to surface. If cement does not circulate, contact the appropriate BLM office.

4. If hardband drill pipe is rotated inside casing, returns will be monitored for metal. If metal is found in samples, drill pipe will be pulled and rubber protectors which have a larger diameter than the tool joints of the drill pipe will be installed prior to continuing drilling operations.

C. PRESSURE CONTROL

1. All blowout preventer (BOP) and related equipment (BOPE) shall comply with well control requirements as described in Onshore Oil and Gas Order No. 2 and API 53.
2. Minimum working pressure of the blowout preventer (BOP) and related equipment (BOPE) required for drilling below the surface casing shoe shall be **3000 (3M) psi (Installing 3M BOP, testing to 2,000 psi). BOP specs must be on location for PET inspection.**
3. The appropriate BLM office shall be notified a minimum of 4 hours in advance for a representative to witness the tests.
 - a. In a water basin, for all casing strings utilizing slips, these are to be set as soon as the crew and rig are ready and any fallback cement remediation has been done. The casing cut-off and BOP installation can be initiated four hours after installing the slips, which will be approximately six hours after bumping the plug. For those casing strings not using slips, the minimum wait time before cut-off is eight hours after bumping the plug. BOP/BOPE testing can begin after cut-off or once cement reaches 500 psi compressive strength (including lead when specified), whichever is greater. However, if the float does not hold, cut-off cannot be initiated until cement reaches 500 psi compressive strength (including lead when specified).

- b. The tests shall be done by an independent service company utilizing a test plug **not a cup or J-packer**.
- c. The test shall be run on a 5000 psi chart for a 2-3M BOP/BOP, on a 10000 psi chart for a 5M BOP/BOPE and on a 15000 psi chart for a 10M BOP/BOPE. If a linear chart is used, it shall be a one hour chart. A circular chart shall have a maximum 2 hour clock. If a twelve hour or twenty-four hour chart is used, tester shall make a notation that it is run with a two hour clock.
- d. The results of the test shall be reported to the appropriate BLM office.
- e. All tests are required to be recorded on a calibrated test chart. **A copy of the BOP/BOPE test chart and a copy of independent service company test will be submitted to the appropriate BLM office.**
- f. The BOP/BOPE test shall include a low pressure test from 250 to 300 psi. The test will be held for a minimum of 10 minutes if test is done with a test plug and 30 minutes without a test plug. This test shall be performed prior to the test at full stack pressure.

D. DRILL STEM TEST

If drill stem tests are performed, Onshore Order 2.III.D shall be followed.

E. WASTE MATERIAL AND FLUIDS

All waste (i.e. drilling fluids, trash, salts, chemicals, sewage, gray water, etc.) created as a result of drilling operations and completion operations shall be safely contained and disposed of properly at a waste disposal facility. No waste material or fluid shall be disposed of on the well location or surrounding area.

Porto-johns and trash containers will be on-location during fracturing operations or any other crew-intensive operations.

JAM 07202020

ACCESS ROAD PLAT
ACCESS ROAD TO THE DAWSON CREEK STATE COM 1H

MACK ENERGY CORPORATION
CENTERLINE SURVEY OF AN ACCESS ROAD CROSSING
SECTION 36, TOWNSHIP 15 SOUTH, RANGE 28 EAST, N.M.P.M.
CHAVES COUNTY, STATE OF NEW MEXICO
MARCH 10, 2020

DESCRIPTION

A STRIP OF LAND 30 FEET WIDE CROSSING STATE OF NEW MEXICO LAND IN SECTION 36, TOWNSHIP 15 SOUTH, RANGE 28 EAST, N.M.P.M., CHAVES COUNTY, STATE OF NEW MEXICO AND BEING 15 FEET EACH SIDE OF THE FOLLOWING DESCRIBED CENTERLINE SURVEY:

BEGINNING AT A POINT WITHIN THE SW/4 NW/4 OF SAID SECTION 36, TOWNSHIP 15 SOUTH, RANGE 28 EAST, N.M.P.M., WHENCE THE WEST QUARTER CORNER OF SAID SECTION 36, TOWNSHIP 15 SOUTH, RANGE 28 EAST, N.M.P.M. BEARS S68°25'56"W, A DISTANCE OF 1249.71 FEET;
THENCE S15°31'12"E A DISTANCE OF 432.75 FEET THE TERMINUS OF THIS CENTERLINE SURVEY, WHENCE THE WEST QUARTER CORNER OF SAID SECTION 36, TOWNSHIP 15 SOUTH, RANGE 28 EAST, N.M.P.M. BEARS S88°05'55"W, A DISTANCE OF 1278.70 FEET;

SAID STRIP OF LAND BEING 432.75 FEET OR 26.23 RODS IN LENGTH, CONTAINING 0.298 ACRES MORE OR LESS AND BEING ALLOCATED BY FORTIES AS FOLLOWS:

SW/4 NW/4 432.75 L.F. 26.23 RODS 0.298 ACRES

GENERAL NOTES

1.) THE INTENT OF THIS ROUTE SURVEY IS TO ACQUIRE AN EASEMENT.

2.) BASIS OF BEARING AND DISTANCE IS NMSP EAST (NAD83) MODIFIED TO SURFACE COORDINATES. NAD 83 (FEET) AND NAVD 88 (FEET) COORDINATE SYSTEMS USED IN THE SURVEY.

SHEET: 2-2

MADRON SURVEYING, INC. 301 SOUTH CANAL CARLSBAD, NEW MEXICO 88220
(575) 234-3341

SURVEYOR CERTIFICATE

I, FILIMON F. JARAMILLO, A NEW MEXICO PROFESSIONAL SURVEYOR NO. 12797, HEREBY CERTIFY THAT I HAVE CONDUCTED AND AM RESPONSIBLE FOR THIS SURVEY, THAT THIS SURVEY IS TRUE AND CORRECT TO THE BEST OF MY KNOWLEDGE AND BELIEF, AND THAT THIS SURVEY AND PLAT MEET THE MINIMUM STANDARDS FOR LAND SURVEYING IN THE STATE OF NEW MEXICO.

IN WITNESS WHEREOF, THIS CERTIFICATE IS EXECUTED AT CARLSBAD, NEW MEXICO, THIS 12 DAY OF MARCH 2020


FILIMON F. JARAMILLO P.S. 12797

MADRON SURVEYING, INC.
301 SOUTH CANAL
CARLSBAD, NEW MEXICO 88220
Phone (575) 234-3341

SURVEY NO. 6319B



U.S. Department of the Interior
BUREAU OF LAND MANAGEMENT

Drilling Plan Data Report

11/03/2020

APD ID: 10400055536

Submission Date: 06/10/2020

Highlighted data
reflects the most
recent changes

Operator Name: MACK ENERGY CORPORATION

Well Name: DAWSON CREEK STATE COM

Well Number: 1H

[Show Final Text](#)

Well Type: OIL WELL

Well Work Type: Drill

Section 1 - Geologic Formations

Formation ID	Formation Name	Elevation	True Vertical Depth	Measured Depth	Lithologies	Mineral Resources	Producing Formation
698646	QUATERNARY	3588	0	0	ALLUVIUM	NONE	N
698647	BASE OF SALT	3118	470	470	SALT	NONE	N
698648	YATES	2982	606	606	SILTSTONE	NATURAL GAS, OIL	N
698649	SEVEN RIVERS	2710	878	878	DOLOMITE, SILTSTONE	NATURAL GAS, OIL	N
698650	QUEEN	2244	1344	1344	SILTSTONE	NATURAL GAS, OIL	N
698651	GRAYBURG	1844	1744	1744	DOLOMITE, SILTSTONE	NATURAL GAS, OIL	N
698652	SAN ANDRES	1514	2074	2074	DOLOMITE	NATURAL GAS, OIL	Y

Section 2 - Blowout Prevention

Pressure Rating (PSI): 3M

Rating Depth: 8997

Equipment: Rotating Head, Mud-Gas Separator

Requesting Variance? NO

Variance request:

Testing Procedure: The BOP/BOPE test shall include a low pressure test from 250 to 300psi. The test will be held for a minimum of 10 minutes if test is done with a test plug and 30 minutes without a test plug. The estimated bottom hole at TD is 120 degrees and estimated maximum bottom hole pressure is 1387 psig (0.052*2899'TVD*9.2ppg) less than 2900 Bottom Hole Pressure. Will test to 2000psi for 30 min.

Choke Diagram Attachment:

choke_manifold_20200326110149.pdf

choke_manifold_diagram_20200331142147.pdf

BOP Diagram Attachment:

bop_diagram_20200326110207.pdf

Operator Name: MACK ENERGY CORPORATION**Well Name:** DAWSON CREEK STATE COM**Well Number:** 1H**Section 3 - Casing**

Casing ID	String Type	Hole Size	Csg Size	Condition	Standard	Tapered String	Top Set MD	Bottom Set MD	Top Set TVD	Bottom Set TVD	Top Set MSL	Bottom Set MSL	Calculated casing length MD	Grade	Weight	Joint Type	Collapse SF	Burst SF	Joint SF Type	Joint SF	Body SF Type	Body SF
1	SURFACE	17.5	13.375	NEW	API	N	0	200	0	200	3588	3388	200	J-55	48	ST&C	7.412	4.701	BUOY	52.87	BUOY	4.74
2	INTERMEDIATE	12.25	9.625	NEW	API	N	0	1200	0	1200	3588	2388	1200	J-55	36	ST&C	3.237	7.04	BUOY	10.768	BUOY	7.04
3	PRODUCTION	8.75	7.0	NEW	API	N	0	2100	0	2100	3588	1488	2100	HCP-110	26	LT&C	6.848	3.317	BUOY	6.481	BUOY	3.317
4	PRODUCTION	8.75	7.0	NEW	API	N	2100	3100	2100	2898	1488	690	1000	HCP-110	26	BUTT	4.686	3.317	BUOY	7.977	BUOY	3.317
5	PRODUCTION	8.75	5.5	NEW	API	N	3100	8997	2898	2899	690	689	5897	HCP-110	17	BUTT	5.692	3.547	BUOY	6.689	BUOY	3.547

Casing Attachments**Casing ID:** 1 **String Type:** SURFACE**Inspection Document:****Spec Document:****Tapered String Spec:****Casing Design Assumptions and Worksheet(s):**

Surface_Csg_20200326114337.pdf

Operator Name: MACK ENERGY CORPORATION**Well Name:** DAWSON CREEK STATE COM**Well Number:** 1H**Casing Attachments**

Casing ID: 2 **String Type:** INTERMEDIATE**Inspection Document:****Spec Document:****Tapered String Spec:****Casing Design Assumptions and Worksheet(s):**Inter._csg_20200326114632.pdf

Casing ID: 3 **String Type:** PRODUCTION**Inspection Document:****Spec Document:****Tapered String Spec:****Casing Design Assumptions and Worksheet(s):**Production_Csg_20200326114917.pdf

Casing ID: 4 **String Type:** PRODUCTION**Inspection Document:****Spec Document:****Tapered String Spec:****Casing Design Assumptions and Worksheet(s):**Production_Csg_20200326115204.pdf

Operator Name: MACK ENERGY CORPORATION

Well Name: DAWSON CREEK STATE COM

Well Number: 1H

Casing Attachments

Casing ID: 5 String Type: PRODUCTION

Inspection Document:

Spec Document:

Tapered String Spec:

Casing Design Assumptions and Worksheet(s):

Production_Csg_20200326115623.pdf

Section 4 - Cement

String Type	Lead/Tail	Stage Tool Depth	Top MD	Bottom MD	Quantity(sx)	Yield	Density	Cu Ft	Excess%	Cement type	Additives
PRODUCTION	Lead		0	0	0	0	0	0	0	0	0

PRODUCTION	Lead		0	0	0	0	0	0	0	0	0
------------	------	--	---	---	---	---	---	---	---	---	---

SURFACE	Lead		0	200	320	1.61	14.4	139.9		RFC+12% PF53+2% PF1+5pps PF42+.125pps PF29	20bbls gelled water 50sx of 11# scavenger cement
SURFACE	Tail		0	200	200	1.34	14.8	139.9	100	Class C + 1% PF1	20bbls gelled water 50sx of 11# scavenger cement
INTERMEDIATE	Lead		0	1200	285	1.72	13.5	375.8	100	Class C + 4% PF20 +.4 pps PF44 + .125 pps PF29	20bbls gelled water 50sx of 11# scavenger cement
INTERMEDIATE	Tail		0	1200	200	1.34	14.8	375.8	100	Class C + 1% PF1	20bbls gelled water 50sx of 11# scavenger cement
PRODUCTION	Lead		0	8997	405	1.84	13.2	1805	40	Class C 4% PF20+ 4pps	20bbls gelled water 50sx of 11# scavenger

Operator Name: MACK ENERGY CORPORATION**Well Name:** DAWSON CREEK STATE COM**Well Number:** 1H

String Type	Lead/Tail	Stage Tool Depth	Top MD	Bottom MD	Quantity(sx)	Yield	Density	Cu Ft	Excess%	Cement type	Additives
										PF45+ 125pps PF29	cement
PRODUCTION	Tail		0	8997	1290	1.91	12	1805	40	PVL+1.3%(BWO W)PF44+30%PF151+5%PF174+.7%PF606+.1%PF13+.1%PF153+3ppsPF42+.4ppsPF45	20bbls gelled water 50sx of 11# scavenger cement

Section 5 - Circulating Medium

Mud System Type: Open**Will an air or gas system be Used?** NO**Description of the equipment for the circulating system in accordance with Onshore Order #2:****Diagram of the equipment for the circulating system in accordance with Onshore Order #2:****Describe what will be on location to control well or mitigate other conditions:** BOPE Brine Water**Describe the mud monitoring system utilized:** Pason PVT with PVT Volume Recorder

Circulating Medium Table

Top Depth	Bottom Depth	Mud Type	Min Weight (lbs/gal)	Max Weight (lbs/gal)	Density (lbs/cu ft)	Gel Strength (lbs/100 sqft)	PH	Viscosity (CP)	Salinity (ppm)	Filtration (cc)	Additional Characteristics
0	200	SPUD MUD	8.5	10	74.8	0.1	11		12000	15	
200	1200	LSND/GEL	8.3	10	74.8	0.1	11		12000	15	
1200	8997	LSND/GEL	8.3	9.2	74.8	0.1	11		12000	15	The estimated bottom hole at TD is 120 degrees and estimated maximum bottom hole pressure is 1387 psig (0.052*2899'TVD*9.2ppg)

Operator Name: MACK ENERGY CORPORATION**Well Name:** DAWSON CREEK STATE COM**Well Number:** 1H

Top Depth	Bottom Depth	Mud Type	Min Weight (lbs/gal)	Max Weight (lbs/gal)	Density (lbs/cu ft)	Gel Strength (lbs/100 sqft)	PH	Viscosity (CP)	Salinity (ppm)	Filtration (cc)	Additional Characteristics
											Less than 2900 Bottom Hole Pressure

Section 6 - Test, Logging, Coring

List of production tests including testing procedures, equipment and safety measures:

None

List of open and cased hole logs run in the well:

CNL/FDC,COMPENSATED DENSILOG,GAMMA RAY LOG,DUAL LATERAL LOG/MICRO-SPHERICALLY FOCUSED,

Coring operation description for the well:

None

Section 7 - Pressure

Anticipated Bottom Hole Pressure: 1387

Anticipated Surface Pressure: 736

Anticipated Bottom Hole Temperature(F): 95

Anticipated abnormal pressures, temperatures, or potential geologic hazards? NO

Describe:

Contingency Plans geohazards description:

Contingency Plans geohazards attachment:

Hydrogen Sulfide drilling operations plan required? NO

Hydrogen sulfide drilling operations plan:

Operator Name: MACK ENERGY CORPORATION

Well Name: DAWSON CREEK STATE COM

Well Number: 1H

Section 8 - Other Information

Proposed horizontal/directional/multi-lateral plan submission:

Dawson_Creek_Federal_Com_1H_Preliminary_Plan_1_20200326145850.pdf

GasCapturePlanFormFinal_000_20200326145902.pdf

Horizontal_Spacing_Unit_20200326145909.pdf

h2s_contingency_plan_20200326145946.pdf

Drilling_Program_20200713141801.pdf

H2S_Operation_Plan_20200713141810.pdf

H2S_Escape_Route_Diagram_20200713142040.pdf

Other proposed operations facets description:

Other proposed operations facets attachment:

Other Variance attachment:

Mack Energy Corporation

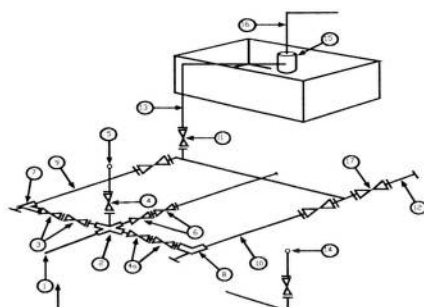
Exhibit #11

MINIMUM CHOKE MANIFOLD

3,000, 5,000, and 10,000 PSI Working Pressure

3M will be used

3 MWP - 5 MWP - 10 MWP



Mud Pit

Reserve Pit

* Location of separator optional

Below Substructure

Minimum requirements

No.		3,000 MWP			5,000 MWP			10,000 MWP		
		I.D.	Nominal	Rating	I.D.	Nominal	Rating	I.D.	Nominal	Rating
1	Line from drilling Spool		3"	3,000		3"	5,000		3"	10,000
2	Cross 3" x 3" x 3" x 2"			3,000			5,000			
2	Cross 3" x 3" x 3" x 2"									10,000
3	Valve Gate Plug	3 1/8		3,000	3 1/8		5,000	3 1/8		10,000
4	Valve Gate Plug	1 13/16		3,000	1 13/16		5,000	1 13/16		10,000
4a	Valves (1)	2 1/16		3,000	2 1/16		5,000	2 1/16		10,000
5	Pressure Gauge			3,000			5,000			10,000
6	Valve Gate Plug	3 1/8		3,000	3 1/8		5,000	3 1/8		10,000
7	Adjustable Choke (3)	2"		3,000	2"		5,000	2"		10,000
8	Adjustable Choke	1"		3,000	1"		5,000	2"		10,000
9	Line		3"	3,000		3"	5,000		3"	10,000
10	Line		2"	3,000		2"	5,000		2"	10,000
11	Valve Gate Plug	3 1/8		3,000	3 1/8		5,000	3 1/8		10,000
12	Line		3"	1,000		3"	1,000		3"	2,000
13	Line		3"	1,000		3"	1,000		3"	2,000
14	Remote reading compound Standpipe pressure quage			3,000			5,000			10,000
15	Gas Separator		2' x 5'			2' x 5'			2' x 5'	
16	Line		4"	1,000		4"	1,000		4"	2,000
17	Valve Gate Plug	3 1/8		3,000	3 1/8		5,000	3 1/8		10,000

- (1) Only one required in Class 3M
 (2) Gate valves only shall be used for Class 10 M
 (3) Remote operated hydraulic choke required on 5,000 psi and 10,000 psi for drilling.

EQUIPMENT SPECIFICATIONS AND INSTALLATION INSTRUCTION

- All connections in choke manifold shall be welded, studded, flanged or Cameron clamp of comparable rating.
- All flanges shall be API 6B or 6BX and ring gaskets shall be API RX or BX. Use only BX for 10 MWP.
- All lines shall be securely anchored.
- Chokes shall be equipped with tungsten carbide seats and needles, and replacements shall be available.
- alternate with automatic chokes, a choke manifold pressure gauge shall be located on the rig floor in conjunction with the standpipe pressure gauge.
- Line from drilling spool to choke manifold should be as straight as possible. Lines downstream from chokes shall make turns by large bends or 90 degree bends using bull plugged tees

Exhibit #12



Exhibit 12 – Choke Manifold Diagram

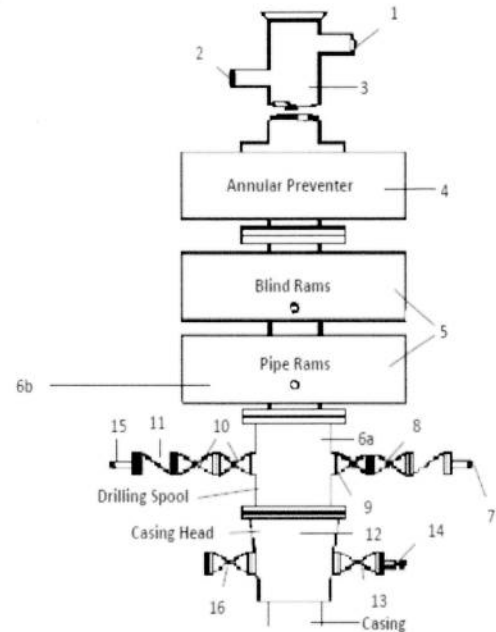
Mack Energy Corporation

Minimum Blowout Preventer Requirements

5000 psi Working Pressure
13 5/8 inch- 5 MWP
11 Inch - 5 MWP

Stack Requirements

NO.	Items	Min. I.D.	Min. Nominal
1	Flowline		2"
2	Fill up line		2"
3	Drilling nipple		
4	Annular preventer		
5	Two single or one dual hydraulically operated rams		
6a	Drilling spool with 2" min. kill line and 3" min choke line outlets		2" Choke
6b	2" min. kill line and 3" min. choke line outlets in ram. (Alternate to 6a above)		
7	Valve Gate Plug	3 1/8	
8	Gate valve-power operated	3 1/8	
9	Line to choke manifold		3"
10	Valve Gate Plug	2 1/16	
11	Check valve	2 1/16	
12	Casing head		
13	Valve Gate Plug	1 13/16	
14	Pressure gauge with needle valve		
15	Kill line to rig mud pump manifold		2"



OPTIONAL

16	Flanged Valve	1 13/16	
----	---------------	---------	--

CONTRACTOR'S OPTION TO FURNISH:

1. All equipment and connections above bradenhead or casinghead. Working pressure of preventers to be 2000 psi minimum.
2. Automatic accumulator (80 gallons, minimum) capable of closing BOP in 30 seconds or less and, holding them closed against full rated working pressure.
3. BOP controls, to be located near drillers' position.
4. Kelly equipped with Kelly cock.
5. Inside blowout preventer or its equivalent on derrick floor at all times with proper threads to fit pipe being used.
6. Kelly saver-sub equipped with rubber casing protector at all times.
7. Plug type blowout preventer tester.
8. Extra set pipe rams to fit drill pipe in use on location at all times.
9. Type RX ring gaskets in place of Type R.

MEC TO FURNISH:

1. Bradenhead or casing head and side valves.
2. Wear bushing. If required.

10.

ME

GENERAL NOTES:

1. Deviations from this drawing may be made only with the express permission of MEC's Drilling Manager.
2. All connections, valves, fittings, piping, etc., subject to well or pump pressure must be flanged (suitable clamp connections acceptable) and have minimum working pressure equal to rated working pressure of preventers up through choke valves must be full opening and suitable for high pressure mud service.
3. Controls to be of standard design and each marked, showing opening and closing position
4. Chokes will be positioned so as not to hamper or delay changing of choke beans.

Replaceable parts for adjustable choke, or bean sizes, retainers, and choke wrenches to be conveniently located for immediate use.

5. All valves to be equipped with hand-wheels or handles ready for immediate use.
6. Choke lines must be suitably anchored.
7. Handwheels and extensions to be connected and ready for use.
8. Valves adjacent to drilling spool to be kept open. Use outside valves except for emergency.
9. All seamless steel control piping (2000 psi working pressure) to have flexible joints to avoid stress. Hoses will be permitted.
10. Casinghead connections shall not be used except in case of emergency.
11. Does not use kill line for routine fill up operations.

Dawson Creek State Com #1H, Plan 1

Operator	Mack Energy Corp			Units	feet, °/100ft		09:24 Wednesday, March 18, 2020 Page 1 of 4			
Field	Round Tank			County	Chaves		Vertical Section Azimuth	359.72		
Well Name	Dawson Creek State Com #1H			State	New Mexico		Survey Calculation Method	Minimum Curvature		
Plan	1			Country	USA		Database	Access		
Location	SL: 2399 FNL & 1454 FWL Sec 36-T15S-R28E BHL: 1324 FNL & 1650 FWL Sec 25-T15S-R28E					Map Zone	UTM		Lat Long Ref	
Site						Surface X	1919812.5		Surface Long	
Slot Name						Surface Y	11970013.5		Surface Lat	
Well Number	UWI					Surface Z	3606.3		Global Z Ref Mean Sea Level	
Project	MD/TVD Ref KB					Ground Level	3588.3		Local North Ref Grid	
DIRECTIONAL WELL PLAN										
MD*	INC*	AZI*	TVD*	N*	E*	DLS*	V. S.*	MapE*	MapN*	SysTVD*
ft	deg	deg	ft	ft	ft	°/100ft	ft	ft	ft	ft
*** TIE (at MD = 2086.00)										
2086.00	0.00	0.0	2086.00	0.00	0.00		0.00	1919812.50	11970013.50	1520.30
2100.00	0.00	0.0	2100.00	0.00	0.00	0.00	0.00	1919812.50	11970013.50	1506.30
2150.00	0.00	0.0	2150.00	0.00	0.00	0.00	0.00	1919812.50	11970013.50	1456.30
*** KOP 8 DEGREES (at MD = 2186.00)										
2186.00	0.00	0.0	2186.00	0.00	0.00	0.00	0.00	1919812.50	11970013.50	1420.30
2200.00	1.12	20.2	2200.00	0.13	0.05	8.00	0.13	1919812.55	11970013.63	1406.30
2250.00	5.12	20.2	2249.91	2.68	0.99	8.00	2.68	1919813.49	11970016.18	1356.39
2300.00	9.12	20.2	2299.52	8.50	3.13	8.00	8.48	1919815.63	11970022.00	1306.78
2350.00	13.12	20.2	2348.57	17.55	6.46	8.00	17.51	1919818.96	11970031.05	1257.73
2400.00	17.12	20.2	2396.83	29.78	10.96	8.00	29.73	1919823.46	11970043.28	1209.47
2450.00	21.12	20.2	2444.06	45.15	16.61	8.00	45.07	1919829.11	11970058.65	1162.24
2500.00	25.12	20.2	2490.04	63.57	23.39	8.00	63.46	1919835.89	11970077.07	1116.26
2550.00	29.12	20.2	2534.53	84.96	31.26	8.00	84.80	1919843.76	11970098.46	1071.77
2600.00	33.12	20.2	2577.33	109.20	40.18	8.00	109.01	1919852.68	11970122.70	1028.97
2650.00	37.12	20.2	2618.22	136.19	50.11	8.00	135.95	1919862.61	11970149.69	988.08
2700.00	41.12	20.2	2657.00	165.80	61.00	8.00	165.50	1919873.50	11970179.30	949.30
2750.00	45.12	20.2	2693.49	197.86	72.80	8.00	197.51	1919885.30	11970211.36	912.81
2800.00	49.12	20.2	2727.50	232.24	85.45	8.00	231.82	1919897.95	11970245.74	878.80
2850.00	53.12	20.2	2758.88	268.76	98.89	8.00	268.28	1919911.39	11970282.26	847.42
*** 55 DEGREE TAN (at MD = 2873.50)										
2873.50	55.00	20.2	2772.67	286.62	105.46	8.00	286.10	1919917.96	11970300.12	833.63
2900.00	55.00	20.2	2787.87	306.99	112.95	0.00	306.44	1919925.45	11970320.49	818.43
2950.00	55.00	20.2	2816.55	345.43	127.09	0.00	344.80	1919939.59	11970358.93	789.75
3000.00	55.00	20.2	2845.23	383.87	141.24	0.00	383.17	1919953.74	11970397.37	761.07
*** 12 DEGREE BUILD (at MD = 3023.50)										
3023.50	55.00	20.2	2858.71	401.93	147.88	0.00	401.21	1919960.38	11970415.43	747.59
3050.00	57.69	18.2	2873.40	422.77	155.13	12.00	422.00	1919967.63	11970436.27	732.90
3100.00	62.86	14.6	2898.18	464.40	167.35	12.00	463.58	1919979.85	11970477.90	708.12
3150.00	68.10	11.4	2918.93	508.70	177.59	12.00	507.83	1919990.09	11970522.20	687.37
3200.00	73.40	8.5	2935.41	555.18	185.72	12.00	554.26	1919998.22	11970568.68	670.89
3250.00	78.74	5.6	2947.45	603.32	191.66	12.00	602.38	1920004.16	11970616.82	658.85
3300.00	84.11	2.9	2954.90	652.60	195.35	12.00	651.64	1920007.85	11970666.10	651.40
3350.00	89.49	0.3	2957.69	702.48	196.74	12.00	701.51	1920009.24	11970715.98	648.61
*** LANDING POINT (at MD = 3360.32)										
3360.32	90.60	359.7	2957.68	712.80	196.74	12.00	711.83	1920009.24	11970726.30	648.62
3400.00	90.60	359.7	2957.27	752.48	196.54	0.00	751.51	1920009.04	11970765.98	649.03
3450.00	90.60	359.7	2956.74	802.48	196.30	0.00	801.51	1920008.80	11970815.98	649.56
3500.00	90.60	359.7	2956.22	852.47	196.06	0.00	851.50	1920008.56	11970865.97	650.08

Dawson Creek State Com #1H, Plan 1

Operator	Mack Energy Corp			Units	feet, °/100ft		09:24 Wednesday, March 18, 2020 Page 2 of 4			
Field	Round Tank			County	Chaves		Vertical Section Azimuth	359.72		
Well Name	Dawson Creek State Com #1H			State	New Mexico		Survey Calculation Method	Minimum Curvature		
Plan	1			Country	USA		Database	Access		
Location	SL: 2399 FNL & 1454 FWL Sec 36-T15S-R28E BHL: 1324 FNL & 1650 FWL Sec 25-T15S-R28E					Map Zone	UTM		Lat Long Ref	
Site	UWI					Surface X	1919812.5		Surface Long	
Slot Name						Surface Y	11970013.5		Surface Lat	
Well Number						Surface Z	3606.3		Global Z Ref Mean Sea Level	
Project						MD/TVD Ref KB	Ground Level	3588.3		Local North Ref Grid
DIRECTIONAL WELL PLAN										
MD*	INC*	AZI*	TVD*	N*	E*	DLS*	V. S.*	MapE*	MapN*	SysTVD*
ft	deg	deg	ft	ft	ft	°/100ft	ft	ft	ft	ft
3550.00	90.60	359.7	2955.70	902.47	195.81	0.00	901.50	1920008.31	11970915.97	650.60
3600.00	90.60	359.7	2955.17	952.47	195.57	0.00	951.50	1920008.07	11970965.97	651.13
3650.00	90.60	359.7	2954.65	1002.46	195.32	0.00	1001.50	1920007.82	11971015.96	651.65
3700.00	90.60	359.7	2954.13	1052.46	195.08	0.00	1051.49	1920007.58	11971065.96	652.17
3750.00	90.60	359.7	2953.60	1102.46	194.83	0.00	1101.49	1920007.33	11971115.96	652.70
3800.00	90.60	359.7	2953.08	1152.45	194.59	0.00	1151.49	1920007.09	11971165.95	653.22
3850.00	90.60	359.7	2952.55	1202.45	194.35	0.00	1201.48	1920006.85	11971215.95	653.75
3900.00	90.60	359.7	2952.03	1252.45	194.10	0.00	1251.48	1920006.60	11971265.95	654.27
3950.00	90.60	359.7	2951.51	1302.44	193.86	0.00	1301.48	1920006.36	11971315.94	654.79
4000.00	90.60	359.7	2950.98	1352.44	193.61	0.00	1351.48	1920006.11	11971365.94	655.32
4050.00	90.60	359.7	2950.46	1402.44	193.37	0.00	1401.47	1920005.87	11971415.94	655.84
4100.00	90.60	359.7	2949.94	1452.43	193.12	0.00	1451.47	1920005.62	11971465.93	656.36
4150.00	90.60	359.7	2949.41	1502.43	192.88	0.00	1501.47	1920005.38	11971515.93	656.89
4200.00	90.60	359.7	2948.89	1552.43	192.64	0.00	1551.47	1920005.14	11971565.93	657.41
4250.00	90.60	359.7	2948.37	1602.42	192.39	0.00	1601.46	1920004.89	11971615.92	657.93
4300.00	90.60	359.7	2947.84	1652.42	192.15	0.00	1651.46	1920004.65	11971665.92	658.46
4350.00	90.60	359.7	2947.32	1702.42	191.90	0.00	1701.46	1920004.40	11971715.92	658.98
4400.00	90.60	359.7	2946.80	1752.41	191.66	0.00	1751.45	1920004.16	11971765.91	659.50
4450.00	90.60	359.7	2946.27	1802.41	191.41	0.00	1801.45	1920003.91	11971815.91	660.03
4500.00	90.60	359.7	2945.75	1852.41	191.17	0.00	1851.45	1920003.67	11971865.91	660.55
4550.00	90.60	359.7	2945.22	1902.40	190.92	0.00	1901.45	1920003.42	11971915.90	661.08
4600.00	90.60	359.7	2944.70	1952.40	190.68	0.00	1951.44	1920003.18	11971965.90	661.60
4650.00	90.60	359.7	2944.18	2002.39	190.44	0.00	2001.44	1920002.94	11972015.89	662.12
4700.00	90.60	359.7	2943.65	2052.39	190.19	0.00	2051.44	1920002.69	11972065.89	662.65
4750.00	90.60	359.7	2943.13	2102.39	189.95	0.00	2101.43	1920002.45	11972115.89	663.17
4800.00	90.60	359.7	2942.61	2152.38	189.70	0.00	2151.43	1920002.20	11972165.88	663.69
4850.00	90.60	359.7	2942.08	2202.38	189.46	0.00	2201.43	1920001.96	11972215.88	664.22
4900.00	90.60	359.7	2941.56	2252.38	189.21	0.00	2251.43	1920001.71	11972265.88	664.74
4950.00	90.60	359.7	2941.04	2302.37	188.97	0.00	2301.42	1920001.47	11972315.87	665.26
5000.00	90.60	359.7	2940.51	2352.37	188.73	0.00	2351.42	1920001.23	11972365.87	665.79
5050.00	90.60	359.7	2939.99	2402.37	188.48	0.00	2401.42	1920000.98	11972415.87	666.31
5100.00	90.60	359.7	2939.46	2452.36	188.24	0.00	2451.42	1920000.74	11972465.86	666.84
5150.00	90.60	359.7	2938.94	2502.36	187.99	0.00	2501.41	1920000.49	11972515.86	667.36
5200.00	90.60	359.7	2938.42	2552.36	187.75	0.00	2551.41	1920000.25	11972565.86	667.88
5250.00	90.60	359.7	2937.89	2602.35	187.50	0.00	2601.41	1920000.00	11972615.85	668.41
5300.00	90.60	359.7	2937.37	2652.35	187.26	0.00	2651.40	1919999.76	11972665.85	668.93
5350.00	90.60	359.7	2936.85	2702.35	187.02	0.00	2701.40	1919999.52	11972715.85	669.45

Dawson Creek State Com #1H, Plan 1

Operator	Mack Energy Corp			Units	feet, °/100ft						09:24 Wednesday, March 18, 2020 Page 3 of 4	
Field	Round Tank			County	Chaves						Vertical Section Azimuth	359.72
Well Name	Dawson Creek State Com #1H			State	New Mexico						Survey Calculation Method	Minimum Curvature
Plan	1			Country	USA						Database	Access
Location	SL: 2399 FNL & 1454 FWL Sec 36-T15S-R28E BHL: 1324 FNL & 1650 FWL Sec 25-T15S-R28E				Map Zone	UTM				Lat Long Ref		
Site					Surface X	1919812.5				Surface Long		
Slot Name					Surface Y	11970013.5				Surface Lat		
Well Number					Surface Z	3606.3				Global Z Ref Mean Sea Level		
Project					Ground Level	3588.3				Local North Ref Grid		
DIRECTIONAL WELL PLAN												
MD*	INC*	AZI*	TVD*	N*	E*	DLS*	V. S.*	MapE*	MapN*	SysTVD*		
ft	deg	deg	ft	ft	ft	°/100ft	ft	ft	ft	ft		
5400.00	90.60	359.7	2936.32	2752.34	186.77	0.00	2751.40	1919999.27	11972765.84	669.98		
5450.00	90.60	359.7	2935.80	2802.34	186.53	0.00	2801.40	1919999.03	11972815.84	670.50		
5500.00	90.60	359.7	2935.28	2852.34	186.28	0.00	2851.39	1919998.78	11972865.84	671.02		
5550.00	90.60	359.7	2934.75	2902.33	186.04	0.00	2901.39	1919998.54	11972915.83	671.55		
5600.00	90.60	359.7	2934.23	2952.33	185.79	0.00	2951.39	1919998.29	11972965.83	672.07		
5650.00	90.60	359.7	2933.71	3002.33	185.55	0.00	3001.39	1919998.05	11973015.83	672.59		
5700.00	90.60	359.7	2933.18	3052.32	185.31	0.00	3051.38	1919997.81	11973065.82	673.12		
5750.00	90.60	359.7	2932.66	3102.32	185.06	0.00	3101.38	1919997.56	11973115.82	673.64		
5800.00	90.60	359.7	2932.13	3152.32	184.82	0.00	3151.38	1919997.32	11973165.82	674.17		
5850.00	90.60	359.7	2931.61	3202.31	184.57	0.00	3201.37	1919997.07	11973215.81	674.69		
5900.00	90.60	359.7	2931.09	3252.31	184.33	0.00	3251.37	1919996.83	11973265.81	675.21		
5950.00	90.60	359.7	2930.56	3302.31	184.08	0.00	3301.37	1919996.58	11973315.81	675.74		
6000.00	90.60	359.7	2930.04	3352.30	183.84	0.00	3351.37	1919996.34	11973365.80	676.26		
6050.00	90.60	359.7	2929.52	3402.30	183.59	0.00	3401.36	1919996.09	11973415.80	676.78		
6100.00	90.60	359.7	2928.99	3452.30	183.35	0.00	3451.36	1919995.85	11973465.80	677.31		
6150.00	90.60	359.7	2928.47	3502.29	183.11	0.00	3501.36	1919995.61	11973515.79	677.83		
6200.00	90.60	359.7	2927.95	3552.29	182.86	0.00	3551.36	1919995.36	11973565.79	678.35		
6250.00	90.60	359.7	2927.42	3602.29	182.62	0.00	3601.35	1919995.12	11973615.79	678.88		
6300.00	90.60	359.7	2926.90	3652.28	182.37	0.00	3651.35	1919994.87	11973665.78	679.40		
6350.00	90.60	359.7	2926.38	3702.28	182.13	0.00	3701.35	1919994.63	11973715.78	679.92		
6400.00	90.60	359.7	2925.85	3752.28	181.88	0.00	3751.34	1919994.38	11973765.78	680.45		
6450.00	90.60	359.7	2925.33	3802.27	181.64	0.00	3801.34	1919994.14	11973815.77	680.97		
6500.00	90.60	359.7	2924.80	3852.27	181.40	0.00	3851.34	1919993.90	11973865.77	681.50		
6550.00	90.60	359.7	2924.28	3902.27	181.15	0.00	3901.34	1919993.65	11973915.77	682.02		
6600.00	90.60	359.7	2923.76	3952.26	180.91	0.00	3951.33	1919993.41	11973965.76	682.54		
6650.00	90.60	359.7	2923.23	4002.26	180.66	0.00	4001.33	1919993.16	11974015.76	683.07		
6700.00	90.60	359.7	2922.71	4052.26	180.42	0.00	4051.33	1919992.92	11974065.76	683.59		
6750.00	90.60	359.7	2922.19	4102.25	180.17	0.00	4101.33	1919992.67	11974115.75	684.11		
6800.00	90.60	359.7	2921.66	4152.25	179.93	0.00	4151.32	1919992.43	11974165.75	684.64		
6850.00	90.60	359.7	2921.14	4202.25	179.69	0.00	4201.32	1919992.19	11974215.75	685.16		
6900.00	90.60	359.7	2920.62	4252.24	179.44	0.00	4251.32	1919991.94	11974265.74	685.68		
6950.00	90.60	359.7	2920.09	4302.24	179.20	0.00	4301.31	1919991.70	11974315.74	686.21		
7000.00	90.60	359.7	2919.57	4352.24	178.95	0.00	4351.31	1919991.45	11974365.74	686.73		
7050.00	90.60	359.7	2919.05	4402.23	178.71	0.00	4401.31	1919991.21	11974415.73	687.26		
7100.00	90.60	359.7	2918.52	4452.23	178.46	0.00	4451.31	1919990.96	11974465.73	687.78		
7150.00	90.60	359.7	2918.00	4502.23	178.22	0.00	4501.30	1919990.72	11974515.73	688.30		
7200.00	90.60	359.7	2917.47	4552.22	177.98	0.00	4551.30	1919990.48	11974565.72	688.83		

Dawson Creek State Com #1H, Plan 1

Operator	Mack Energy Corp			Units	feet, °/100ft		09:24 Wednesday, March 18, 2020 Page 4 of 4				
Field	Round Tank			County	Chaves		Vertical Section Azimuth		359.72		
Well Name	Dawson Creek State Com #1H			State	New Mexico		Survey Calculation Method		Minimum Curvature		
Plan	1			Country	USA		Database		Access		
Location				SL: 2399 FNL & 1454 FWL Sec 36-T15S-R28E BHL: 1324 FNL & 1650 FWL Sec 25-T15S-R28E		Map Zone		UTM		Lat Long Ref	
Site						Surface X		1919812.5		Surface Long	
Slot Name				UWI		Surface Y		11970013.5		Surface Lat	
Well Number				API		Surface Z		3606.3		Global Z Ref Mean Sea Level	
Project				MD/TVD Ref KB		Ground Level		3588.3		Local North Ref Grid	
DIRECTIONAL WELL PLAN											
MD*	INC*	AZI*	TVD*	N*	E*	DLS*	V. S.*	MapE*	MapN*	SysTVD*	
ft	deg	deg	ft	ft	ft	°/100ft	ft	ft	ft	ft	
7250.00	90.60	359.7	2916.95	4602.22	177.73	0.00	4601.30	1919990.23	11974615.72	689.35	
7300.00	90.60	359.7	2916.43	4652.22	177.49	0.00	4651.30	1919989.99	11974665.72	689.87	
7350.00	90.60	359.7	2915.90	4702.21	177.24	0.00	4701.29	1919989.74	11974715.71	690.40	
7400.00	90.60	359.7	2915.38	4752.21	177.00	0.00	4751.29	1919989.50	11974765.71	690.92	
7450.00	90.60	359.7	2914.86	4802.21	176.75	0.00	4801.29	1919989.25	11974815.71	691.44	
7500.00	90.60	359.7	2914.33	4852.20	176.51	0.00	4851.28	1919989.01	11974865.70	691.97	
7550.00	90.60	359.7	2913.81	4902.20	176.26	0.00	4901.28	1919988.76	11974915.70	692.49	
7600.00	90.60	359.7	2913.29	4952.20	176.02	0.00	4951.28	1919988.52	11974965.70	693.01	
7650.00	90.60	359.7	2912.76	5002.19	175.78	0.00	5001.28	1919988.28	11975015.69	693.54	
7700.00	90.60	359.7	2912.24	5052.19	175.53	0.00	5051.27	1919988.03	11975065.69	694.06	
7750.00	90.60	359.7	2911.71	5102.19	175.29	0.00	5101.27	1919987.79	11975115.69	694.59	
7800.00	90.60	359.7	2911.19	5152.18	175.04	0.00	5151.27	1919987.54	11975165.68	695.11	
7850.00	90.60	359.7	2910.67	5202.18	174.80	0.00	5201.26	1919987.30	11975215.68	695.63	
7900.00	90.60	359.7	2910.14	5252.18	174.55	0.00	5251.26	1919987.05	11975265.68	696.16	
7950.00	90.60	359.7	2909.62	5302.17	174.31	0.00	5301.26	1919986.81	11975315.67	696.68	
8000.00	90.60	359.7	2909.10	5352.17	174.07	0.00	5351.26	1919986.57	11975365.67	697.20	
8050.00	90.60	359.7	2908.57	5402.17	173.82	0.00	5401.25	1919986.32	11975415.67	697.73	
8100.00	90.60	359.7	2908.05	5452.16	173.58	0.00	5451.25	1919986.08	11975465.66	698.25	
8150.00	90.60	359.7	2907.53	5502.16	173.33	0.00	5501.25	1919985.83	11975515.66	698.77	
8200.00	90.60	359.7	2907.00	5552.16	173.09	0.00	5551.25	1919985.59	11975565.66	699.30	
8250.00	90.60	359.7	2906.48	5602.15	172.84	0.00	5601.24	1919985.34	11975615.65	699.82	
8300.00	90.60	359.7	2905.96	5652.15	172.60	0.00	5651.24	1919985.10	11975665.65	700.34	
8350.00	90.60	359.7	2905.43	5702.15	172.36	0.00	5701.24	1919984.86	11975715.65	700.87	
8400.00	90.60	359.7	2904.91	5752.14	172.11	0.00	5751.23	1919984.61	11975765.64	701.39	
8450.00	90.60	359.7	2904.38	5802.14	171.87	0.00	5801.23	1919984.37	11975815.64	701.92	
8500.00	90.60	359.7	2903.86	5852.14	171.62	0.00	5851.23	1919984.12	11975865.64	702.44	
8550.00	90.60	359.7	2903.34	5902.13	171.38	0.00	5901.23	1919983.88	11975915.63	702.96	
8600.00	90.60	359.7	2902.81	5952.13	171.13	0.00	5951.22	1919983.63	11975965.63	703.49	
8650.00	90.60	359.7	2902.29	6002.13	170.89	0.00	6001.22	1919983.39	11976015.63	704.01	
8700.00	90.60	359.7	2901.77	6052.12	170.65	0.00	6051.22	1919983.15	11976065.62	704.53	
8750.00	90.60	359.7	2901.24	6102.12	170.40	0.00	6101.22	1919982.90	11976115.62	705.06	
8800.00	90.60	359.7	2900.72	6152.12	170.16	0.00	6151.21	1919982.66	11976165.62	705.58	
8850.00	90.60	359.7	2900.20	6202.11	169.91	0.00	6201.21	1919982.41	11976215.61	706.10	
8900.00	90.60	359.7	2899.67	6252.11	169.67	0.00	6251.21	1919982.17	11976265.61	706.63	
8950.00	90.60	359.7	2899.15	6302.11	169.42	0.00	6301.20	1919981.92	11976315.61	707.15	
*** TD (at MD = 8996.32)											
8996.32	90.60	359.7	2898.66	6348.43	169.20	0.00	6347.52	1919981.70	11976361.93	707.64	

District I
1625 N. French Dr., Hobbs, NM 88240
District II
811 S. First St., Artesia, NM 88210
District III
1000 Rio Brazos Road, Aztec, NM 87410
District IV
1220 S. St. Francis Dr., Santa Fe, NM 87505

State of New Mexico
Energy, Minerals and Natural Resources Department
Oil Conservation Division
1220 South St. Francis Dr.
Santa Fe, NM 87505

Submit Original
to Appropriate
District Office

GAS CAPTURE PLAN

Date: 3/18/2020

☒ Original Operator & OGRID No.: Mack Energy Corporation - 013837
☐ Amended - Reason for Amendment:

This Gas Capture Plan outlines actions to be taken by the Operator to reduce well/production facility flaring/venting for new completion (new drill, recomple to new zone, re-frac) activity.

Note: Form C-129 must be submitted and approved prior to exceeding 60 days allowed by Rule (Subsection A of 19.15.18.12 NMAC).

Well(s)/Production Facility – Name of facility

The well(s) that will be located at the production facility are shown in the table below.

Well Name	API	Well Location (ULSTR)	Footages	Expected MCF/D	Flared or Vented	Comments
Dawson Creek State Com #1H		Sec.36T15S R28E	2399 FNL 1454 FWL	50		

Gathering System and Pipeline Notification

Well(s) will be connected to a production facility after flowback operations are complete, if gas transporter system is in place. The gas produced from production facility is dedicated to DCP Midstream and will be connected to DCP Midstream low pressure gathering system located in Chaves County, New Mexico. It will require _0 (existing)' of pipeline to connect the facility to low/high pressure gathering system. Mack Energy Corporation provides (periodically) to DCP Midstream a drilling, completion and estimated first production date for wells that are scheduled to be drilled in the foreseeable future. In addition, Mack Energy Corporation and DCP Midstream have periodic conference calls to discuss changes to drilling and completion schedules. Gas from these wells will be processed at DCP Midstream Linam Ranch Processing Plant located in Sec._6____, Twn._19S____, Rng._37E____, _Lea____ County, New Mexico. The actual flow of the gas will be based on compression operating parameters and gathering system pressures.

Flowback Strategy

After the fracture treatment/completion operations, well(s) will be produced to temporary production tanks and gas will be flared or vented. During flowback, the fluids and sand content will be monitored. When the produced fluids contain minimal sand, the wells will be turned to production facilities. Gas sales should start as soon as the wells start flowing through the production facilities, unless there are operational issues on DCP Midstream system at that time. Based on current information, it is Mack Energy Corporation belief the system can take this gas upon completion of the well(s).

Safety requirements during cleanout operations from the use of underbalanced air cleanout systems may necessitate that sand and non-pipeline quality gas be vented and/or flared rather than sold on a temporary basis.

Alternatives to Reduce Flaring

Below are alternatives considered from a conceptual standpoint to reduce the amount of gas flared.

- Power Generation – On lease
 - Only a portion of gas is consumed operating the generator, remainder of gas will be flared
- Compressed Natural Gas – On lease
 - Gas flared would be minimal, but might be uneconomical to operate when gas volume declines
- NGL Removal – On lease
 - Plants are expensive, residue gas is still flared, and uneconomical to operate when gas volume declines

Mack Energy Corporation

Legal Description:
Mack Energy-San Andres MDP Area
Chaves Co. New Mexico
Various Sections
T-15-S, R-28-E and R-29-E

H2S "Contingency Plan"

1

Table of Contents

- I. H₂S Contingency Plan
 - a. Scope
 - b. Objective
 - c. Discussion of Plan
- II. Emergency Procedures
 - a. Emergency Procedures
 - b. Emergency Reaction Steps
 - c. Simulated Blowout Control Drills
- III. Ignition Procedures
 - a. Responsibility
 - b. Instructions
- IV. Training Requirements
- V. Emergency Equipment
- VI. Check Lists
 - a. Status Check List
 - b. Procedural Check List
- VII. Evacuation Plan
 - a. General Plan
 - b. Emergency Phone Lists
- VIII. General information
 - a. Drilling/Re-entry Permits
 - b. H₂S Permissible Limits
 - c. Toxicity Table
 - d. Physical Properties
 - e. Respirator Use
 - f. Emergency Rescue

H2S CONTINGENCY PLAN SECTION

Scope:

This contingency plan provides an organized plan of action for alerting and protecting the public within an area of exposure prior to an intentional release, or following the accidental release of a potentially hazardous volume of hydrogen sulfide. The plan establishes guidelines for all personnel whose work activity may involve exposure to Hydrogen Sulfide Gas (H₂S).

Objective:

Prevent any and all accidents, and prevent the uncontrolled release of H₂S into the atmosphere.

Provide proper evacuation procedures to cope with emergencies.

Provide immediate and adequate medical attention should an injury occur.

Discussion of Plan:

Suspected Problem Zones:

Implementation: This plan, with all details, is to be fully implemented 1000' before drilling into the first sour zone.

Emergency Response Procedure: This section outlines the conditions and denotes steps to be taken in the event of an emergency.

Emergency Equipment and Procedure: This section outlines the safety and emergency equipment that will be required for the drilling of this well.

Training Provisions: This section outlines the training provisions that must be adhered to 1000' before drilling into the first sour zone.

Emergency call list: Included are the telephone numbers of all persons that would need to be contacted, should an H₂S emergency occur.

Briefing: This section deals with the briefing of all persons involved with the drilling of this well.

Public Safety: Public Safety Personnel will be made aware of the drilling of this well.

Check Lists: Status check lists and procedural check lists have been included to ensure adherence to the plan.

General/Information: A general information section has been included to supply support information.

EMERGENCY PROCEDURES SECTION

I. In the event of any evidence of H₂S level above 10ppm, take the following steps immediately:

- a. Secure breathing apparatus.
- b. Order non-essential personnel out of the danger zone.
- c. Take steps to determine if the H₂S level can be corrected or suppressed, and if so, proceed with normal operations.

II. If uncontrollable conditions occur, proceed with the following:

- a. Take steps to protect and/or remove any public downwind of the rig, including partial evacuation or isolation. Notify public safety personnel and the New Mexico Oil Conservation Division or Bureau of Land Management, whichever is appropriate, of the situation.
- b. Remove all personnel to the Safe Briefing Area.
- c. Notify public safety personnel for help with maintaining roadblocks and implementing evacuation.
- d. Determine and proceed with the best possible plan to regain control of the well. Maintain tight security and safety measures.

III. Responsibility:

- a. The Company Approved Supervisor shall be responsible for the total implementation of the plan.
- b. The Company Approved Supervisor shall be in complete command during any emergency.
- c. The Company Approved Supervisor shall designate a back-up Supervisor in the event that he/she is not available.

EMERGENCY PROCEDURE IMPLEMENTATION

I. Drilling or Tripping

a. All Personnel

- i. When alarm sounds, don escape unit and report to upwind Safe Briefing Area.
- ii. Check status of other personnel (buddy system).
- iii. Secure breathing apparatus.
- iv. Wait for orders from supervisor.

b. Drilling Foreman

- i. Report to the upwind Safe Briefing Area.
- ii. Don Breathing Apparatus and return to the point of release with the Tool Pusher or Driller (buddy system).
- iii. Determine the concentration of H₂S.
- iv. Assess the situation and take appropriate control measures.

c. Tool Pusher

- i. Report to the upwind Safe Briefing Area.
- ii. Don Breathing Apparatus and return to the point of release with the Drilling Foreman or the Driller (buddy system).
- iii. Determine the concentration of H₂S.
- iv. Assess the situation and take appropriate control measures.

d. Driller

- i. Check the status of other personnel (in a rescue attempt, always use the buddy system).
- ii. Assign the least essential person to notify the Drilling Foreman and Tool Pusher, in the event of their absence.
- iii. Assume the responsibility of the Drilling Foreman and the Tool Pusher until they arrive, in the event of their absence.

e. Derrick Man and Floor Hands

- i. Remain in the upwind Safe Briefing Area until otherwise instructed by a supervisor.

f. Mud Engineer

- i. Report to the upwind Safe Briefing Area.
- ii. When instructed, begin check of mud for pH level and H₂S level.

g. Safety Personnel

- i. Don Breathing Apparatus.
- ii. Check status of personnel.
- iii. Wait for instructions from Drilling Foreman or Tool Pusher.

II. Taking a Kick

- a. All Personnel report to the upwind Safe Briefing Area.
- b. Follow standard BOP procedures.

III. Open Hole Logging

- a. All unnecessary personnel should leave the rig floor.
- b. Drilling Foreman and Safety Personnel should monitor the conditions and make necessary safety equipment recommendations.

IV. Running Casing or Plugging

- a. Follow "Drilling or Tripping" procedures.
- b. Assure that all personnel have access to protective equipment.

SIMULATED BLOWOUT CONTROL DRILLS

All drills will be initiated by activating alarm devices (air horn). One long blast, on the air horn, for ACTUAL and SIMULATED Blowout Control Drills. This operation will be performed by the Drilling Foreman or Tool Pusher at least one time per week for each of the following conditions, with each crew:

- | | |
|----------|---------------------|
| Drill #1 | Bottom Drilling |
| Drill #2 | Tripping Drill Pipe |

In each of these drills, the initial reaction time to shutting in the well shall be timed as well as the total time for the crew to complete its entire pit drill assignment. The times must be recorded on the IADC Driller's Log as "Blowout Control Drill".

Drill No.:
Reaction Time to Shut-In: minutes, seconds.
Total Time to Complete Assignment: minutes, seconds.

I. Drill Overviews

- a. Drill No. 1-Bottom Drilling
 - i. Sound the alarm immediately.
 - ii. Stop the rotary and hoist Kelly joint above the rotary table.
 - iii. Stop the circulatory pump.
 - iv. Close the drill pipe rams.
 - v. Record casing and drill pipe shut-in pressures and pit volume increases.
- b. Drill No. 2-Tripping Drill Pipe
 - i. Sound the alarm immediately.
 - ii. Position the upper tool joint just above the rotary table and set the slips.
 - iii. Install a full opening valve or inside blowout preventer tool in order to close the drill pipe.
 - iv. Close the drill pipe rams.
 - v. Record the shut-in annular pressure.

II. Crew Assignments

a. Drill No. 1-Bottom Drilling

i. *Driller*

1. Stop the rotary and hoist Kelly joint above the rotary table.
2. Stop the circulatory pump.
3. Check Flow.
4. If flowing, sound the alarm immediately
5. Record the shut-in drill pipe pressure
6. Determine the mud weight increase needed or other courses of action.

ii. *Derrick man*

1. Open choke line valve at BOP.
2. Signal Floor Man #1 at accumulator that choke line is open.
3. Close choke and upstream valve after pipe tam have been closed.
4. Read the shut-in annular pressure and report readings to Driller.

iii. *Floor Man #1*

1. Close the pipe rams after receiving the signal from the Derrickman.
2. Report to Driller for further instructions.

iv. *Floor Man #2*

1. Notify the Tool Pusher and Operator representative of the H₂S alarms.
2. Check for open fires and, if safe to do so, extinguish them.
3. Stop all welding operations.
4. Turn-off all non-explosions proof lights and instruments.
5. Report to Driller for further instructions.

v. *Tool Pusher*

1. Report to the rig floor.
2. Have a meeting with all crews.

3. Compile and summarize all information.
4. Calculate the proper kill weight.
5. Ensure that proper well procedures are put into action.

vi. *Operator Representative*

1. Notify the Drilling Superintendent.
2. Determine if an emergency exists and if so, activate the contingency plan.

b. Drill No. 2- Tripping Pipe

i. Driller

1. Sound the alarm immediately when mud volume increase has been detected.
2. Position the upper tool joint just above the rotary table and set slips.
3. Install a full opening valve or inside blowout preventer tool to close the drill pipe.
4. Check flow.
5. Record all data reported by the crew.
6. Determine the course of action.

ii. Derrick man

1. Come down out of derrick.
2. Notify Tool Pusher and Operator Representative.
3. Check for open fires and, if safe to do so, extinguish them.
4. Stop all welding operations.
5. Report to Driller for further instructions.

iii. Floor Man #1

1. Pick up full opening valve or inside blowout preventer tool and stab into tool joint above rotary table (with Floor Man #2).
2. Tighten valve with back-up tongs.

3. Close pipe rams after signal from Floor Man #2.
4. Read accumulator pressure and check for possible high pressure fluid leaks in valves or piping.
5. Report to Driller for further instructions.

iv. Floor Man #2

1. Pick-up full opening valve or inside blowout preventer tool and stab into tool joint above rotary table (with Floor Man #1).
2. Position back-up tongs on drill pipe.
3. Open choke line valve at BOP.
4. Signal Floor Man #1 at accumulator that choke line is open.
5. Close choke and upstream valve after pipe rams have been closed.
6. Check for leaks on BOP stack and choke manifold.
7. Read annular pressure.
8. Report readings to the Driller.

v. Tool Pusher

1. Report to the rig floor.
2. Have a meeting with all of the crews.
3. Compile and summarize all information.
4. See that proper well kill procedures are put into action.

vi. Operator Representative

1. Notify Drilling Superintendent
2. Determine if an emergency exists, and if so, activate the contingency plan.

IGNITION PROCEDURES

Responsibility:

The decision to ignite the well is the responsibility of the DRILLING FOREMAN in concurrence with the emergency response officials. In the event the Drilling Foreman is incapacitated, it becomes the responsibility of the RIG TOOL PUSHER. This decision should be made only as a last resort and in a situation where it is clear that:

1. Human life and property are endangered.
2. There is no hope of controlling the blowout under the prevailing conditions.

If time permits, notify the main office, but do not delay if human life is in danger. Initiate the first phase of the evacuation plan.

Instructions for Igniting the Well:

1. Two people are required for the actual igniting operation. Both men must wear self-contained breathing apparatus and must use a full body harness and attach a retrievable safety line to the D-Ring in the back. One man must monitor the atmosphere for explosive gases with the LEL monitor, while the Drilling Foreman is responsible for igniting the well.
2. The primary method to ignite is a 25mm flare gun with a range of approximately 500 feet.
3. Ignite from upwind and do not approach any closer than is warranted.
4. Select the ignition site best suited for protection and which offers an easy escape route.
5. Before igniting, check for the presence of combustible gases.
6. After igniting, continue emergency actions and procedures as before.
7. All unassigned personnel will limit their actions to those directed by the Drilling Foreman.

Note: After the well is ignited, burning Hydrogen Sulfide will convert to Sulfur Dioxide, which is also highly toxic. Do not assume the area is safe after the well is ignited.

TRAINING PROGRAM

When working in an area where Hydrogen Sulfide (H₂S) might be encountered, definite training requirements must be carried out. The Company Supervisor will ensure that all personnel, at the well site, have had adequate training in the following consistent with the requirements in ANSI/ASSE Z390.1-2006 (R2010) Accepted Practices for Hydrogen Sulfide (H₂S) Training Programs:

1. Physical and Chemical Properties of Hydrogen Sulfide.
2. Sources of Hydrogen Sulfide.
3. Human Physiology and Medical Evaluation.
4. Work Procedures.
5. Personal Protective Equipment.
6. Use of Contingency Plans and Emergency Response.
7. Burning, Flaring and Venting of Hydrogen Sulfide.
8. State and Federal Regulatory Requirements.
9. Hydrogen Sulfide Release Dispersion Models
10. Rescue Techniques, First Aid and Post-Exposure Evaluation
11. Methods of Detection and Monitoring
12. Engineering Controls
13. Transportation of Hydrogen Sulfide Cargoes
14. Emerging Technology

Service company personnel and visiting personnel must be notified if the zone contains H₂S, and each service company must provide proof of adequate training and equipment for their employees before they arrive at the well site.

EMERGENCY EQUIPMENT REQUIREMENTS

Lease Entrance Sign:

Should be located at the lease entrance with the following information:

CAUTION- POTENTIAL POISON GAS
HYDROGEN SULFIDE
NO ADMITTANCE WITHOUT AUTHORIZATION

Respiratory Equipment:

- Fresh air breathing equipment should be placed at the safe briefing areas and should include the following:
- Two SCBA's at each briefing area.
- Enough airline units to operate safely, anytime the H₂S concentration reaches the IDLH level (100 ppm).
- Cascade system with enough breathing air hose and manifolds to reach the rig floor, the derrick man and the other operation areas.

Windsocks or Wind Streamers:

- A minimum of two 10" windsocks located at strategic locations so that they may be seen from any point on location.
- Wind streamers (if preferred) should be placed at various locations on the well site to ensure wind consciousness at all times. (Corners of location).

Hydrogen Sulfide Detector and Alarms:

- 1- Four channel H₂S monitor with alarms.
- Four (4) sensors located as follows: #1- Rig Floor, #2- Bell Nipple, #3- Shale Shaker, #4- Mud Pits.
- Gastec or Draeger pump with tubes.
- Sensor test gas.

Well Condition Sign and Flags:

The Well Condition Sign w/flags should be placed a minimum of 150' before you enter the location. It should have three (3) color coded flags (green, yellow and red) that will be used to denote the following location conditions:

GREEN- Normal Operating Conditions

YELLOW- Potential Danger

RED- Danger, H₂S Gas Present

Auxiliary Rescue Equipment:

- Stretcher
- 2- 100' Rescue lines.
- First Aid Kit properly stocked.

Mud Inspection Equipment:

Garret Gas Train or Hach Tester for inspection of Hydrogen Sulfide in the drilling mud system.

Fire Extinguishers:

Adequate fire extinguishers shall be located at strategic locations.

Blowout Preventer:

- The well shall have hydraulic BOP equipment for the anticipated BHP.
- The BOP should be tested upon installation.
- BOP, Choke Line and Kill Line will be tested as specified by Operator.

Confined Space Monitor:

There should be a portable multi-gas monitor with at least 3 sensors (O₂, LEL H₂S). This instrument should be used to test the atmosphere of any confined space before entering. It should also be used for atmospheric testing for LEL gas before beginning any type of Hot Work. Proper calibration documentation will need to be provided.

Communication Equipment:

- Proper communication equipment such as cell phones or 2-way radios should be available at the rig.
- Radio communication shall be available for communication between the company man's trailer, rig floor and the tool pusher's trailer.

- Communication equipment shall be available on the vehicles.

Special Control Equipment:

- Hydraulic BOP equipment with remote control on the ground.
- Rotating head at the surface casing point.

Evacuation Plan:

- Evacuation routes should be established prior to spudding the well.
- Should be discussed with all rig personnel.

Designated Areas:***Parking and Visitor area:***

- All vehicles are to be parked at a pre-determined safe distance from the wellhead.
- Designated smoking area.

Safe Briefing Areas:

- Two Safe Briefing Areas shall be designated on either side of the location at the maximum allowable distance from the well bore so they offset prevailing winds or they are at a 180 degree angle if wind directions tend to shift in the area.
- Personal protective equipment should be stored at both briefing areas or if a moveable cascade trailer is used, it should be kept upwind of existing winds. When wind is from the prevailing direction, both briefing areas should be accessible.

Note:

- Additional equipment will be available at the Alliance Safety office.
- Additional personal H₂S monitors are available for all employees on location.
- Automatic Flare Igniters are recommended for installation on the rig.

CHECK LISTS

Status Check List

Note: Date each item as they are implemented.

1. Sign at location entrance. _____
2. Two (2) wind socks (in required locations). _____
3. Wind Streamers (if required). _____
4. SCBA's on location for all rig personnel and mud loggers. _____
5. Air packs, inspected and ready for use. _____
6. Spare bottles for each air pack (if required). _____
7. Cascade system for refilling air bottles. _____
8. Cascade system and hose line hook up. _____
9. Choke manifold hooked-up and tested.
(before drilling out surface casing.) _____
10. Remote Hydraulic BOP control (hooked-up and tested before
drilling out surface casing). _____
11. BOP tested (before drilling out surface casing). _____
12. Mud engineer on location with equipment to test mud for H₂S. _____
13. Safe Briefing Areas set-up _____
14. Well Condition sign and flags on location and ready. _____
15. Hydrogen Sulfide detection system hooked -up & tested. _____
16. Hydrogen Sulfide alarm system hooked-up & tested. _____
17. Stretcher on location at Safe Briefing Area. _____
18. 2 -100' Life Lines on location. _____
19. 1-20# Fire Extinguisher in safety trailer. _____
20. Confined Space Monitor on location and tested. _____
21. All rig crews and supervisor trained (as required). _____

22. Access restricted for unauthorized personnel.

23. Drills on H₂S and well control procedures.

24. All outside service contractors advised of potential H₂S on the well.

25. NO SMOKNG sign posted.

26. H₂S Detector Pump w/tubes on location.

27. 25mm Flare Gun on location w/flares.

28. Automatic Flare Igniter installed on rig.

Procedural Check List

Perform the following on each tour:

1. Check fire extinguishers to see that they have the proper charge.
2. Check breathing equipment to insure that they have not been tampered with.
3. Check pressure on the supply air bottles to make sure they are capable of recharging.
4. Make sure all of the Hydrogen Sulfide detection systems are operative.

Perform the following each week:

1. Check each piece of breathing equipment to make sure that they are fully charged and operational. This requires that the air cylinder be opened and the mask assembly be put on and tested to make sure that the regulators and masks are properly working. Negative and Positive pressure should be conducted on all masks.
2. BOP skills.
3. Check supply pressure on BOP accumulator stand-by source.
4. Check all breathing air mask assemblies to see that straps are loosened and turned back, ready for use.
5. Check pressure on cascade air cylinders to make sure they are fully charged and ready to use for refill purposes if necessary.
6. Check all cascade system regulators to make sure they work properly.
7. Perform breathing drills with on-site personnel.
8. Check the following supplies for availability:
 - Stretcher
 - Safety Belts and Ropes
 - Spare air Bottles
 - Spare Oxygen Bottles (if resuscitator required)
 - Gas Detector Pump and Tubes
 - Emergency telephone lists
9. Test the Confined Space Monitor to verify the batteries are good

EVACUATION PLAN

General Plan

The direct lines of action prepared by Mack Energy Corporation to protect the public from hazardous gas situations are as follows:

1. When the company approved supervisor (Drilling Foreman, Tool Pusher or Driller) determine that Hydrogen Sulfide gas cannot be limited to the well location, and the public will be involved, he will activate the evacuation plan. Escape routes are noted on the area map.
2. Company safety personnel or designee will notify the appropriate local government agency that a hazardous condition exists and evacuation needs to be implemented.
3. Company approved safety personnel that have been trained in the use of the proper emergency equipment will be utilized.
4. Law enforcement personnel (State Police, Local Police Department, Fire Department, and the Sheriff's Department) will be called to aid in setting up and maintaining road blocks. Also, they will aid in evacuation of the public if necessary.

NOTE: Law enforcement personnel will not be asked to come into a contaminated area. Their assistance will be limited to uncontaminated areas. Constant radio contact will be maintained with them.

5. After the discharge of gas has been controlled, "Company" safety personnel will determine when the area is safe for re-entry.

See Specific Site Safety Plan or Job Safety Analysis to be completed during drilling

Emergency Assistance Telephone List

PUBLIC SAFETY: 911 or

Pecos Valley Communication (575) 624-7590
 Center (Chaves County Police, Fire, EMS)

Central Dispatch (575) 616-7155
 (Eddy County Police, Fire, EMS)

Hospitals:

Roswell (575) 622-8170

Artesia (575) 748-3333

Dept. of Public Safety/SE New Mexico (575) 622-7200

Highway Department (575) 637-7200

New Mexico Oil Conservation (575) 748-1283

Bureau of Land Management (575) 622-5335

Mack Energy CorporationCompany Drilling Supervisor

Jim Krogman (575) 703-7385

Drilling Foreman

Emilio Martinez (575) 703-5231

Silver Oak Drilling

Silver Oak Drilling (575) 746-4405

Tool Pusher:

Darren Mc Bride (575) 703-6070

Osiel Sanchez (575) 703-4109

Safety

Lee Hassell (Alliance Safety)

(806) 217-2950

Scott Ford (Mack Energy)

(505) 692-4976

Robbie Houghtaling (Silver Oak)

(575) 703-2122

Intentionally Blank –Space provided for Specific Site Safety Plan or Job Safety Analysis

Affected Notification List

(within a 65' radius of exposure @ 100ppm)

The geologic zones that will be encountered during drilling are known to contain hazardous quantities of H₂S. The accompanying map illustrates the affected areas of the community. The residents within this radius will be notified via a hand delivered written notice describing the activities, potential hazards, conditions of evacuation, evacuation drill siren alarms and other precautionary measures.

Evacuee Description:

Residents: **THERE ARE NO RESIDENTS WITHIN 3000' ROE.**

Notification Process:

A continuous siren audible to all residence will be activated, signaling evacuation of previously notified and informed residents.

Evacuation Plan:

All evacuees will migrate lateral to the wind direction.

The Oil Company will identify all home bound or highly susceptible individuals and make special evacuation preparations, interfacing with the local and emergency medical service as necessary.

Toxic Effects of H₂S Poisoning

Hydrogen Sulfide is extremely toxic. The acceptable ceiling concentration for eight-hour exposure is 10 PPM, which is .001% by volume. Hydrogen Sulfide is heavier than air (specific gravity -1.192) and is colorless and transparent. Hydrogen Sulfide is almost as toxic as Hydrogen Cyanide and is 5-6 times more toxic than Carbon Monoxide. Occupational exposure limits for Hydrogen Sulfide and other gases are compared below in Table 1. Toxicity table for H₂S and physical effects are shown in Table 2.

Table 1
Permissible Exposure Limits of Various Gases

Common Name	Symbol	Sp. Gravity	TLV	STEL	IDLH
Hydrogen Cyanide	HCN	.94	4.7 ppm	c	
Hydrogen Sulfide	H ₂ S	1.192	10 ppm	15 ppm	100 ppm
Sulfide Dioxide	so ₂	2.21	2 ppm	5 ppm	
Chlorine	CL	2.45	.5 ppm	1 ppm	
Carbon Monoxide	co	.97	25 ppm	200 ppm	
Carbon Dioxide	CO ₂	1.52	5000 ppm	30,000 ppm	
Methane	CH ₄	.55	4.7% LEL	14% UEL	

Definitions

- A. TLV- Threshold Limit Value is the concentration employees may be exposed based on a TWA {time weighted average} for eight {8} hours in one day for 40 hours in one {1} week. This is set by ACGIH {American Conference of Governmental Hygienists} and regulated by OSHA.
- B. STEL- Short Term Exposure Limit is the 15 minute average concentration an employee may be exposed to providing that the highest exposure never exceeds the OEL {Occupational Exposure Limit}. The OEL for H₂S is 19 PPM.
- C. IDLH -Immediately Dangerous to Life and Health is the concentration that has been determined by the ACGIH to cause serious health problems or death if exposed to this level. The IDLH for H₂S is 100 PPM.
- D. TWA- Time Weighted Average is the average concentration of any chemical or gas for an eight {8} hour period. This is the concentration that any employee may be exposed based on an TWA.

TABLE 2

Toxicity Table of H₂S

Percent%	PPM	Physical Effects
.0001	1	Can smell less than 1ppm.
.001	10	TLV for 8 hours of exposure.
.0015	15	STEL for 15 minutes of exposure.
.01	100	Immediately Dangerous to Life & Health. Kills sense of smell in 3 to 5 minutes.
.02	200	Kills sense of smell quickly, may burn eyes and throat.
.05	500	Dizziness, cessation of breathing begins in a few minutes .
.07	700	Unconscious quickly, death will result if not rescued promptly.
.10	1000	Death will result unless rescued promptly. Artificial resuscitation may be necessary.

PHYSICAL PROPERTIES OF H₂S

The properties of all gases are usually described in the context of seven major categories:

COLOR
ODOR
VAPOR DENSITY
EXPLOSIVE LIMITS
FLAMMABILITY
SOLUBILITY (IN WATER)
BOILING POINT

Hydrogen Sulfide is no exception. Information from these categories should be considered in order to provide a fairly complete picture of the properties of the gas.

COLOR-TRANSPARENT

Hydrogen Sulfide is colorless so it is invisible. This fact simply means that you can't rely on your eyes to detect its presence. In fact that makes this gas extremely dangerous to be around.

ODOR- ROTTEN EGGS

Hydrogen Sulfide has a distinctive offensive smell, similar to "rotten eggs". For this reason it earned its common name "sour gas". However, H₂S, even in low concentrations, is so toxic that it attacks and quickly impairs a victim's sense of smell, so it could be fatal to rely on your nose as a detection device.

VAPOR DENSITY- SPECIFIC GRAVITY OF 1.192

Hydrogen Sulfide is heavier than air so it tends to settle in low-lying areas like pits, cellars or tanks. If you find yourself in a location where H₂S is known to exist, protect yourself. Whenever possible, work in an area upwind and keep to higher ground.

EXPLOSIVE LIMITS- 4.3% TO 46%

Mixed with the right proportion of air or oxygen, H₂S will ignite and burn or explode, producing another alarming element of danger besides poisoning.

FLAMMABILITY

Hydrogen Sulfide will burn readily with a distinctive clear blue flame, producing Sulfur Dioxide (SO₂), another hazardous gas that irritates the eyes and lungs.

SOLUBILITY-4 TO 1 RATIO WITH WATER

Hydrogen Sulfide can be dissolved in liquids, which means that it can be present in any container or vessel used to carry or hold well fluids including oil, water, emulsion and sludge. The solubility of H₂S is dependent on temperature and pressure, but if conditions are right, simply agitating a fluid containing H₂S may release the gas into the air.

BOILING POINT- {-76 degrees Fahrenheit)

Liquefied Hydrogen Sulfide boils at a very low temperature, so it is usually found as a gas.

RESPIRATOR USE

The Occupational Safety and Health Administration (OSHA) regulate the use of respiratory protection to protect the health of employees. OSHA's requirements are written in the Code of Federal Regulations, Title 29, Part 1910, Section 134, Respiratory Protection. This regulation requires that all employees who might be required to wear respirators, shall complete a OSHA mandated medical evaluation questionnaire. The employee then should be fit tested prior to wearing any respirator while being exposed to hazardous gases.

Written procedures shall be prepared covering safe use of respirators in dangerous atmospheric situations, which might be encountered in normal operations or in emergencies. Personnel shall be familiar with these procedures and the available respirators.

Respirators shall be inspected prior to and after each use to make sure that the respirator has been properly cleaned, disinfected and that the respirator works properly. The unit should be fully charged prior to being used.

Anyone who may use respirators shall be properly trained in how to properly seal the face piece. They shall wear respirators in normal air and then in a test atmosphere. (Note: Such items as facial hair (beard or sideburns) and eyeglass temple pieces will not allow a proper seal.) Anyone that may be expected to wear respirators should have these items removed before entering a toxic atmosphere. A special mask must be obtained for anyone who must wear eyeglasses. Contact lenses should not be allowed.

Respirators shall be worn during the following conditions:

- A. Any employee who works near the top or on the top of any tank unless tests reveal less than 20 ppm of H₂S.
- B. When breaking out any line where H₂S can reasonably be expected.
- C. When sampling air in areas where H₂S may be present.
- D. When working in areas where the concentration of H₂S exceeds the Threshold Limit Value for H₂S { 10 ppm).
- E. At any time where there is a doubt as to the H₂S level in the area to be entered.

EMERGENCY RESCUE PROCEDURES

DO NOT PANIC!!!

Remain Calm -Think

1. Before attempting any rescue you must first get out of the hazardous area yourself. Go to a safe briefing area.
2. Sound alarm and activate the 911 system.
3. Put on breathing apparatus. At least two persons should do this, when available use the buddy system.
4. Rescue the victim and return them to a safe briefing area.
5. Perform an initial assessment and begin proper First Aid/CPR procedures.
6. Keep victim lying down with a blanket or coat, etc., under the shoulders to keep airway open. Conserve body heat and do not leave unattended.
7. If the eyes are affected by H₂S, wash them thoroughly with potable water. For slight irritation, cold compresses are helpful.
8. In case a person has only minor exposure and does not lose consciousness totally, it's best if he doesn't return to work until the following day.
9. Any personnel overcome by H₂S should always be examined by medical personnel. They should always be transported to a hospital or doctor.

Attached to Form 3160-3

Mack Energy Corporation

Dawson Creek State Com #1H NMNM-130324

SHL : 2399 FNL & 1454 FWL, SENW, Sec. 36 T15S R28E

BHL : 1301 FNL & 2310 FEL, SENW, Sec. 25 T15S R28E

Chaves County, NM

DRILLING PROGRAM

1. Geologic Name of Surface Formation

Quaternary

2. Estimated Tops of Important Geologic Markers:

Base of Salt	470'
Yates	606'
Seven Rivers	878'
Queen	1344'
Grayburg	1744'
San Andres	2074'

3. Estimated Depths of Anticipated Fresh Water, Oil and Gas:

Water Sand	150'	Fresh Water
Yates	606'	Oil/Gas
Seven Rivers	878'	Oil/Gas
Queen	1344'	Oil/Gas
Grayburg	1744'	Oil/Gas
San Andres	2074'	Oil/Gas

No other formations are expected to give up oil, gas or fresh water in measurable quantities. Setting 13 3/8" casing to 200' and circulating cement back to surface will protect the surface fresh water sand. Salt section and shallower zones above TD, which contain commercial quantities of oil and/or gas, will have cement circulated across them by cementing 5 1/2" production casing, sufficient cement will be pumped to circulate back to surface.

4. Casing Program:

Hole Size	Interval	OD Casing	Wt, Grade, Jt, cond, collapse/burst/tension
17 1/2"	0-200'	13 3/8"	48#, J-55, ST&C, New, 7.411859/4.700889/4.74
12 1/4"	0-1200'	9 5/8"	36#, J-55, ST&C, New, 3.237170/7.04/7.04
8 3/4"	0-2100'	7"	26#, HCP-110, LT&C, New, 6.848104/3.316667/3.316667
8 3/4"	2100-3100'	7"	26#, HCP-110, Buttress, New, 4.68634/3.316667/ 3.316667
8 3/4"	3100-8997'	5 1/2"	17#, HCP-110, Buttress, New, 5.691618/3.546667/3.546667

5. Cement Program:

13 3/8" Surface Casing: Lead 320sx, RFC + 12% PF53 + 2% PF1 + 5 pps PF42 + .125 pps PF29, yld 1.61, wt 14.4 ppg, 7.357 gals/sx. Tail: 200sx, Class C+1% PF1, yld 1.34, wt 14.8 ppg, 6.323 gals/sx, excess 100%, Slurry Top Surface

Attached to Form 3160-3
Mack Energy Corporation
Dawson Creek State Com #1H NMNM-130324
SHL : 2399 FNL & 1454 FWL, SENW, Sec. 36 T15S R28E
BHL : 1301 FNL & 2310 FEL, SENW, Sec. 25 T15S R28E
Chaves County, NM

9 5/8" Intermediate Casing: Lead 285sx Class C + 4% PF20 + .4 pps PF44 + .125 pps PF29, yld 1.72, wt 13.5 ppg, excess 100%, Slurry Top Surface. Tail: 200sx, Class C+.1% PF1, yld 1.34, wt 14.8 ppg, 6.323 gals/sx, excess 100%, Slurry Top 1,000'

7" & 5 1/2" Production Casing: Lead 405sx, Class C 4% PF 20 + 4 pps PF45 + .125 pps PF29, yld 1.84, wt 13.2 ppg, 9.914 gals/sx, excess 40%, Slurry Top Surface, Tail: 1290sx, PVL + 1.3% (BWOW) PF44 + 30% PF 151 + 5% PF 174 + .7% PF 606 + .1% PF 13 + .1% PF 153 + 3pps PF42 + .4 pps PF 45 yld 1.91, wt 13 ppg, 9.502gals/sx, 40% excess, Slurry Top 2100'

6. Minimum Specifications for Pressure Control:

The blowout preventer equipment (BOP) shown in Exhibit #10 will consist of a double ram-type (3000 psi WP) minimum preventer. This unit will be hydraulically operated and the ram type preventer will be equipped with blind rams on top of 4 1/2" drill pipe rams on bottom. The 11" BOP will be nipped up on the 8 5/8" surface casing and tested by a 3rd party to 2000 psi used continuously until TD is reached. All BOP's and accessory equipment will be tested to 2000 psi before drilling out of intermediate casing. Pipe rams will be operationally checked each 24-hour period. Blind rams will be operationally checked on each trip out of the hole. These checks will be noted on the daily tour sheets. Other accessories to the BOP equipment (Exhibit #10) will include a Kelly cock and floor safety valve and choke lines and choke manifold (Exhibit #11) with a minimum 2000 psi WP rating

7. Types and Characteristics of the Proposed Mud System:

The well will be drilled to TD with a combination of fresh and cut brine mud system. The applicable depths and properties of this system are as follows:

DEPTH	TYPE	WEIGHT	VISCOSITY	WATERLOSS
0-200'	Fresh Water	10	28	N.C.
200-1200'	Cut Brine	10	29	N.C.
1200-TD'	Cut Brine	9.2	29	N.C.

Sufficient mud materials to maintain mud properties and meet minimum lost circulation and weight increase requirements will be kept at the well site at all times.

8. Auxiliary Well Control and Monitoring Equipment:

- A. Kelly cock will be kept in the drill string at all times.
- B. A full opening drill pipe-stabbing valve with proper drill pipe connections will be on the rig floor at all times.

9. Logging, Testing and Coring Program:

- A. The electric logging program will consist of GR-Dual Laterolog, Spectral Density, Dual Spaced Neutron, CSNG Log from T.D. to 8 5/8 casing shoe.
- B. Drill Stem test is not anticipated.

Mack Energy Corporation
Dawson Creek State Com #1H NMNM-130324
SHL : 2399 FNL & 1454 FWL, SENW, Sec. 36 T15S R28E
BHL : 1301 FNL & 2310 FEL, SENW, Sec. 25 T15S R28E
Chaves County, NM

-
- C. No conventional coring is anticipated.
 - D. Further testing procedures will be determined at TD.

10. Abnormal Conditions, Pressures, Temperatures and Potential Hazards:

No abnormal pressures or temperatures are anticipated. The estimated bottom hole at TD is 120 degrees and estimated maximum bottom hole pressure is 1387 psig (0.052*2899*TVD*9.2ppg) Less than 2900 Bottom Hole Pressure. Test to 2000psi for 30 mins. Low levels of Hydrogen sulfide have been monitors in producing wells in the area, so H2S may be present while drilling of the well; a plan is attached to the Drilling program. No major loss of circulation zones has been reported in offsetting wells.

11. Anticipated Starting Date and Duration of Operations:

Road and location work will not begin until approval has been received from the BLM. The anticipated spud date is October 1, 2020. Once commenced, the drilling operation should be finished in approximately 20 days. If the well is productive, an additional 30 days will be required for completion and testing before a decision is made to install permanent facilities.

Attachment to Exhibit #10
NOTES REGARDING THE BLOWOUT PREVENTERS
Dawson Creek State Com 1H
Chaves County, New Mexico

1. Drilling nipple to be so constructed that it can be removed without use of a welder through rotary table opening, with minimum I.D. equal to preventer bore.
2. Wear ring to be properly installed in head.
3. Blow out preventer and all fittings must be in good condition, 2000 psi WP minimum.
4. All fittings to be flanged.
5. Safety valve must be available on rig floor at all times with proper connections, valve to be full 2000 psi WP minimum.
6. All choke and fill lines to be securely anchored especially ends of choke lines.
7. Equipment through which bit must pass shall be at least as large as the diameter of the casing being drilled through.
8. Kelly cock on Kelly.
9. Extension wrenches and hands wheels to be properly installed.
10. Blow out preventer control to be located as close to driller's position as feasible.

Attached to Form 3160-3

Mack Energy Corporation

Dawson Creek State Com #1H NMNM-130324

SHL : 2399 FNL & 1454 FWL, SENW, Sec. 36 T15S R28E

BHL : 1301 FNL & 2310 FEL, SENW, Sec. 25 T15S R28E

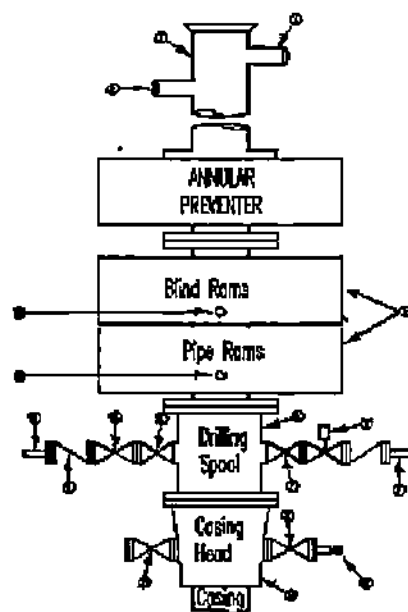
Chaves County, NM

-
11. Blow out preventer closing equipment to include minimum 40-gallon accumulator, two independent sources of pump power on each closing unit installation all API specifications.

Mack Energy Corporation
Minimum Blowout Preventer Requirements
3000 psi Working Pressure
 13 3/8 inch- 3 MWP
 11 Inch - 3 MWP
EXHIBIT #10

Stack Requirements

NO.	Items	Min. I.D.	Min. Nominal
1	Flowline		2"
2	Fill up line		2"
3	Drilling nipple		
4	Annular preventer		
5	Two single or one dual hydraulically operated rams		
6a	Drilling spool with 2" min. kill line and 3" min choke line outlets		2" Choke
6b	2" min. kill line and 3" min. choke line outlets in ram. (Alternate to 6a above)		
7	Valve Gate Plug	3 1/8	
8	Gate valve-power operated	3 1/8	
9	Line to choke manifold		3"
10	Valve Gate Plug	2 1/16	
11	Check valve	2 1/16	
12	Casing head		
13	Valve Gate Plug	1 13/16	
14	Pressure gauge with needle valve		
15	Kill line to rig mud pump manifold		2"



OPTIONAL

16	Flanged Valve	1 13/16	
----	---------------	---------	--

CONTRACTOR'S OPTION TO FURNISH:

1. All equipment and connections above bradenhead or casinghead. Working pressure of preventers to be 2000 psi minimum.
2. Automatic accumulator (80 gallons, minimum) capable of closing BOP in 30 seconds or less and, holding them closed against full rated working pressure.
3. BOP controls, to be located near drillers' position.
4. Kelly equipped with Kelly cock.
5. Inside blowout preventer or its equivalent on derrick floor at all times with proper threads to fit pipe being used.
6. Kelly saver-sub equipped with rubber casing protector at all times.
7. Plug type blowout preventer tester.
8. Extra set pipe rams to fit drill pipe in use on location at all times.
9. Type RX ring gaskets in place of Type R.

MEC TO FURNISH:

1. Bradenhead or casing head and side valves.
2. Wear bushing. If required.

GENERAL NOTES:

1. Deviations from this drawing may be made only with the express permission of MEC's Drilling Manager.
2. All connections, valves, fittings, piping, etc., subject to well or pump pressure must be flanged (suitable clamp connections acceptable) and have minimum working pressure equal to rated working pressure of preventers up through choke valves must be full opening and suitable for high pressure mud service.
3. Controls to be of standard design and each marked, showing opening and closing position.
4. Chokes will be positioned so as not to hamper or delay changing of choke beans.

Replaceable parts for

adjustable choke, or bean sizes, retainers, and choke wrenches to be conveniently located for immediate use.

5. All valves to be equipped with hand-wheels or handles ready for immediate use.
6. Choke lines must be suitably anchored.
7. Handwheels and extensions to be connected and ready for use.
8. Valves adjacent to drilling spool to be kept open. Use outside valves except for emergency.
9. All seamless steel control piping (2000 psi working pressure) to have flexible joints to avoid stress. Hoses will be permitted.
10. Casinghead connections shall not be used except in case of emergency.
11. Does not use kill line for routine fill up operations.

Mack Energy Corporation

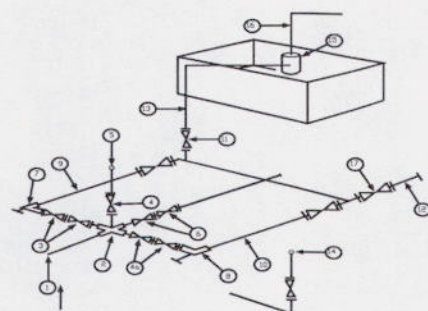
Exhibit #11

MINIMUM CHOKE MANIFOLD

2,000, 5,000, and 10,000 PSI Working Pressure

3M will be used

2 MWP - 5 MWP - 10 MWP



Mud Pit

Reserve Pit

* Location of separator optional

Below Substructure

Minimum requirements

No.		3,000 MWP			5,000 MWP			10,000 MWP		
		I.D.	Nominal	Rating	I.D.	Nominal	Rating	I.D.	Nominal	Rating
1	Line from drilling Spool		3"	3,000		3"	5,000		3"	10,000
2	Cross 3" x 3" x 3" x 2"			3,000			5,000			
2	Cross 3" x 3" x 3" x 2"									10,000
3	Valve Gate Plug	3 1/8		3,000	3 1/8		5,000	3 1/8		10,000
4	Valve Gate Plug	1 13/16		3,000	1 13/16		5,000	1 13/16		10,000
4a	Valves (1)	2 1/16		3,000	2 1/16		5,000	2 1/16		10,000
5	Pressure Gauge			3,000			5,000			10,000
6	Valve Gate Plug	3 1/8		3,000	3 1/8		5,000	3 1/8		10,000
7	Adjustable Choke (3)	2"		3,000	2"		5,000	2"		10,000
8	Adjustable Choke	1"		3,000	1"		5,000	2"		10,000
9	Line		3"	3,000		3"	5,000		3"	10,000
10	Line		2"	3,000		2"	5,000		2"	10,000
11	Valve Gate Plug	3 1/8		3,000	3 1/8		5,000	3 1/8		10,000
12	Line		3"	1,000		3"	1,000		3"	2,000
13	Line		3"	1,000		3"	1,000		3"	2,000
14	Remote reading compound Standpipe pressure gauge			3,000			5,000			10,000
15	Gas Separator		2' x 5'			2' x 5'			2' x 5'	
16	Line		4"	1,000		4"	1,000		4"	2,000
17	Valve Gate Plug	3 1/8		3,000	3 1/8		5,000	3 1/8		10,000

(1) Only one required in Class 2M

(2) Gate valves only shall be used for Class 10 M

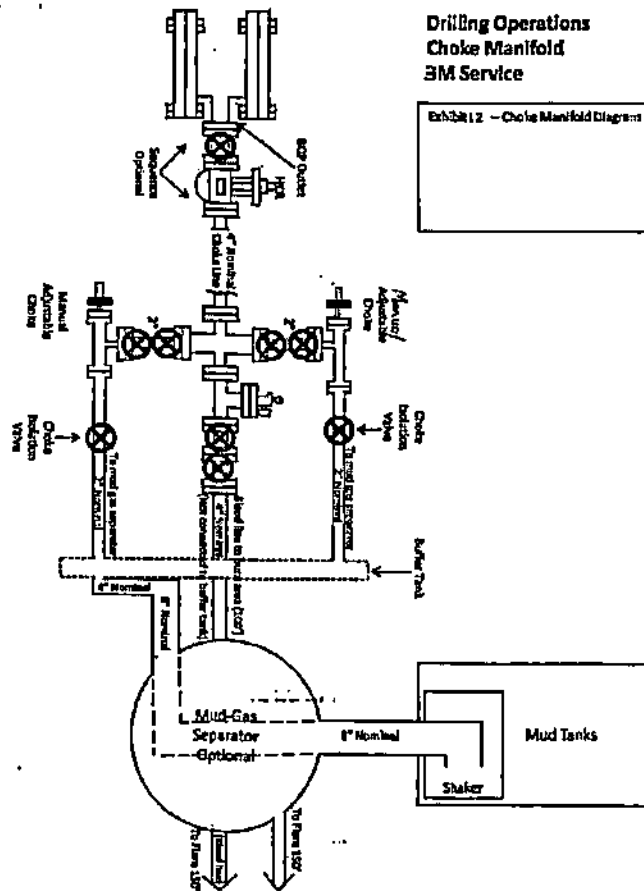
(3) Remote operated hydraulic choke required on 5,000 psi and 10,000 psi for drilling.

EQUIPMENT SPECIFICATIONS AND INSTALLATION INSTRUCTION

- All connections in choke manifold shall be welded, studded, flanged or Cameron clamp of comparable rating.
- All flanges shall be API 6B or 6BX and ring gaskets shall be API RX or BX. Use only BX for 10 MWP.
- All lines shall be securely anchored.
- Chokes shall be equipped with tungsten carbide seats and needles, and replacements shall be available.
- alternate with automatic chokes, a choke manifold pressure gauge shall be located on the rig floor in conjunction with the standpipe pressure gauge.
- Line from drilling spool to choke manifold should be as straight as possible. Lines downstream from chokes shall make turns by large bends or 90 degree bends using bull plugged tees

Mack Energy Corporation**MANIFOLD SCHEMATIC**

Exhibit #12



Attached to Form 3160-3
Mack Energy Corporation
Dawson Creek State Com #1H NMNM-130324
SHL : 2399 FNL & 1454 FWL, SENW, Sec. 36 T15S R28E
BHL : 1301 FNL & 2310 FEL, SENW, Sec. 25 T15S R28E
Chaves County, NM

**Mack Energy Corporation
Onshore Order #6
Hydrogen Sulfide Drilling Operation Plan**

I. HYDROGEN SULFIDE TRAINING

All personnel, whether regularly assigned, contracted, or employed on an unscheduled basis, will receive training from a qualified instructor in the following areas prior to commencing drilling operations on this well:

1. The hazards and characteristics of hydrogen sulfide (H₂S)
2. The proper use and maintenance of personal protective equipment and life support systems.
3. The proper use of H₂S detectors alarms warning systems, briefing areas, evacuation procedures, and prevailing winds.
4. The proper techniques for first aid and rescue procedures.

In addition, supervisory personnel will be trained in the following areas:

1. The effects of H₂S on metal components. If high tensile tubular are to be used, personnel will be trained in their special maintenance requirements.
2. Corrective action and shut-in procedures when drilling or reworking a well and blowout prevention and well control procedures.
3. The contents and requirements of the H₂S Drilling Operations Plan and Public Protection Plan.

There will be an initial training session just prior to encountering a known or probable H₂S zone (within 3 days or 500 feet) and weekly H₂S and well control drills for all personnel in each crew. The initial training session shall include a review of the site specific H₂S Drilling Operations Plan and the Public Protection Plan. **The concentrations of H₂S of wells in this area from surface to TD are low enough that a contingency plan is not required.**

II. H₂S SAFETY EQUIPMENT AND SYSTEMS

Note: All H₂S safety equipment and systems will be installed, tested, and operational when drilling reaches a depth of 500 feet above, or three days prior to penetrating the first zone containing or reasonably expected to contain H₂S.

1. Well Control Equipment:

- A. Flare line.
- B. Choke manifold.
- C. Blind rams and pipe rams to accommodate all pipe sizes with properly sized closing unit.
- D. Auxiliary equipment may include if applicable: annular preventer & rotating head.

Mack Energy Corporation
Dawson Creek State Com #1H NMNM-130324
SHL : 2399 FNL & 1454 FWL, SENW, Sec. 36 T15S R28E
BHL : 1301 FNL & 2310 FEL, SENW, Sec. 25 T15S R28E
Chaves County, NM

2. Protective equipment for essential personnel:

- A. Mark II Survive air 30-minute units located in the doghouse and at briefing areas, as indicated on well site diagram.

3. H2S detection and monitoring equipment:

- A. 1 portable H2S monitors positioned on location for best coverage and response. These units have warning lights and audible sirens when H2S levels of 20 PPM are reached.

4. Visual warning systems:

- A. Wind direction indicators as shown on well site diagram (Exhibit #8).
- B. Caution/Danger signs (Exhibit #7) shall be posted on roads providing direct access to location. Signs will be painted a high visibility yellow with black lettering of sufficient size to be readable at a reasonable distance from the immediate location. Bilingual signs will be used, when appropriate. See example attached.

5. Mud program:

- A. The mud program has been designed to minimize the volume of H2S circulated to surface. Proper mud weight, safe drilling practices and the use of H2S scavengers will minimize hazards when penetrating H2S bearing zones.

6. Metallurgy:

- A. All drill strings, casings, tubing, wellhead, blowout preventer, drilling spool, kill lines, choke manifold and lines, and valves shall be suitable for H2S service.
- B. All elastomers used for packing and seals shall be H2S trim.

7. Communication:

- A. Radio communications in company vehicles including cellular telephone and 2-way radio.
- B. Land line (telephone) communication at Office.

8. Well testing:

- A. Drill stem testing will be performed with a minimum number of personnel in the immediate vicinity, which are necessary to safely and adequately conduct the test. The drill stem testing will be conducted during daylight hours and formation fluids will not be flowed to the surface. All drill-stem-testing operations conducted in an H2S environment will use the closed chamber method of testing.

Attached to Form 3160-3
Mack Energy Corporation
Dawson Creek State Com #1H NMNM-130324
SHL : 2399 FNL & 1454 FWL, SENW, Sec. 36 T15S R28E
BHL : 1301 FNL & 2310 FEL, SENW, Sec. 25 T15S R28E
Chaves County, NM

B. There will be no drill stem testing.

EXHIBIT #7

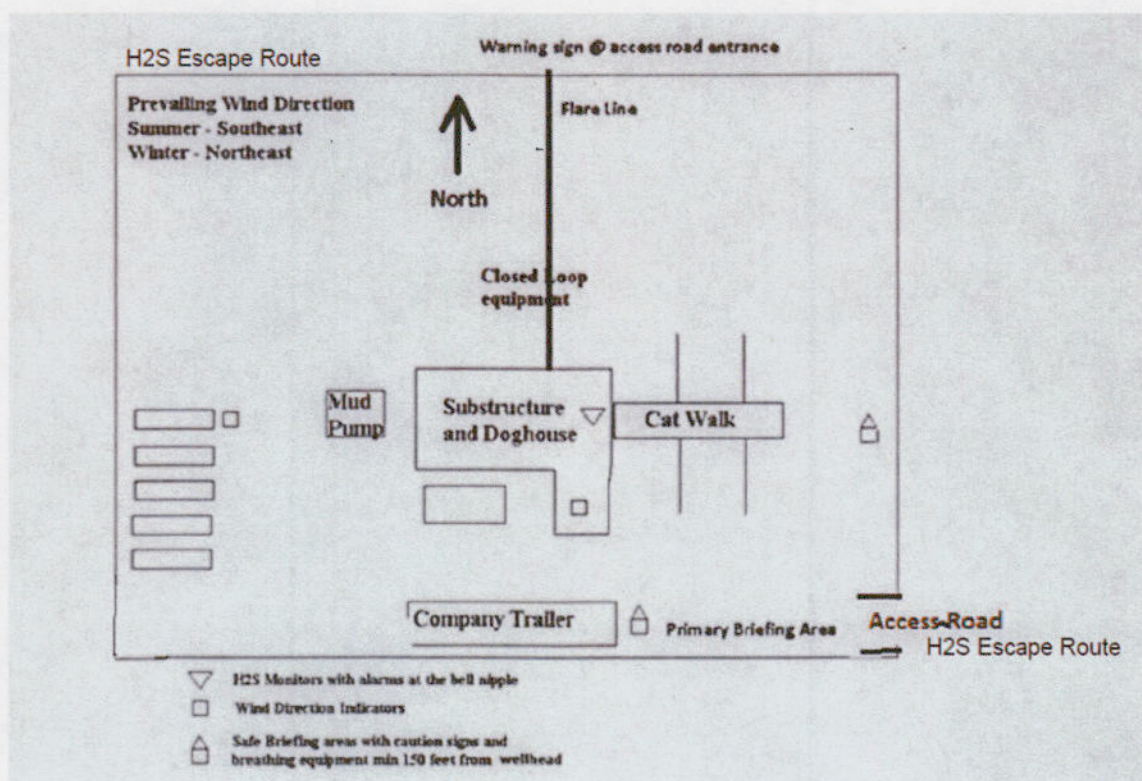
WARNING

YOU ARE ENTERING AN H₂S
AUTHORIZED PERSONNEL ONLY

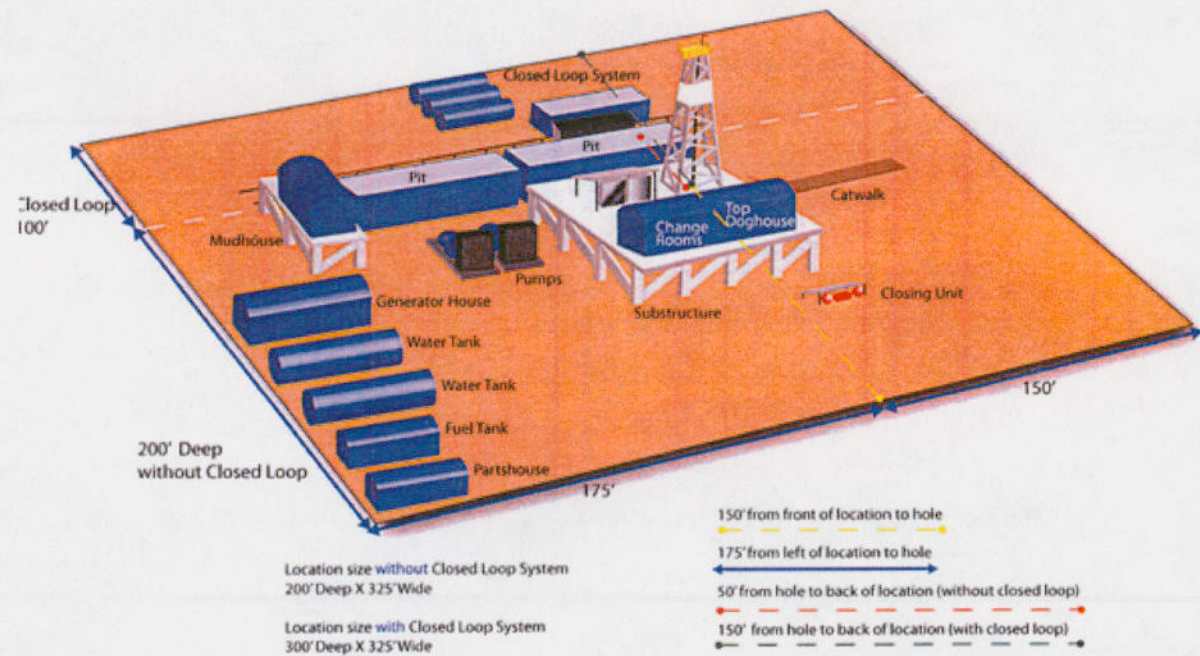
1. BEARDS OR CONTACT LENSES NOT ALLOWED
2. HARD HATS REQUIRED
3. SMOKING IN DESIGNATED AREAS ONLY
4. BE WIND CONSCIOUS AT ALL TIMES
5. CHECK WITH MACK ENERGY FOREMAN AT OFFICE

MACK ENERGY CORPORATION

1-575-748-1288



Location Layout



Mack Energy Corporation Call List, Chaves County

Artesia (575)	Cellular	Office
Jim Krogman.....	432-934-1596.....	748-1288
Emilio Martinez.....	432-934-7586.....	748-1288

Agency Call List (575)**Roswell**

State Police.....	622-7200
City Police.....	624-6770
Sheriff's Office.....	624-7590
Ambulance.....	624-7590
Fire Department.....	624-7590
LEPC (Local Emergency Planning Committee).....	624-6770
NMOCD.....	748-1283
Bureau of Land Management.....	627-0272

Emergency Services

Boots & Coots IWC.....	1-800-256-9688 or (281)931-8884
Cudd pressure Control.....	(915)699-0139 or (915)563-3356
Halliburton.....	746-2757
Par Five.....	748-9539
Flight For Life-Lubbock, TX.....	(806)743-9911
Aerocare-Lubbock, TX.....	(806)747-8923
Med Flight Air Amb-Albuquerque, NM.....	(505)842-4433
Lifeguard Air Med Svc. Albuquerque, NM.....	(505)272-3115

Attached to Form 3160-3

Mack Energy Corporation

Dawson Creek State Com #1H NMNM-130324

SHL : 2399 FNL & 1454 FWL, SENW, Sec. 36 T15S R28E

BHL : 1301 FNL & 2310 FEL, SENW, Sec. 25 T15S R28E

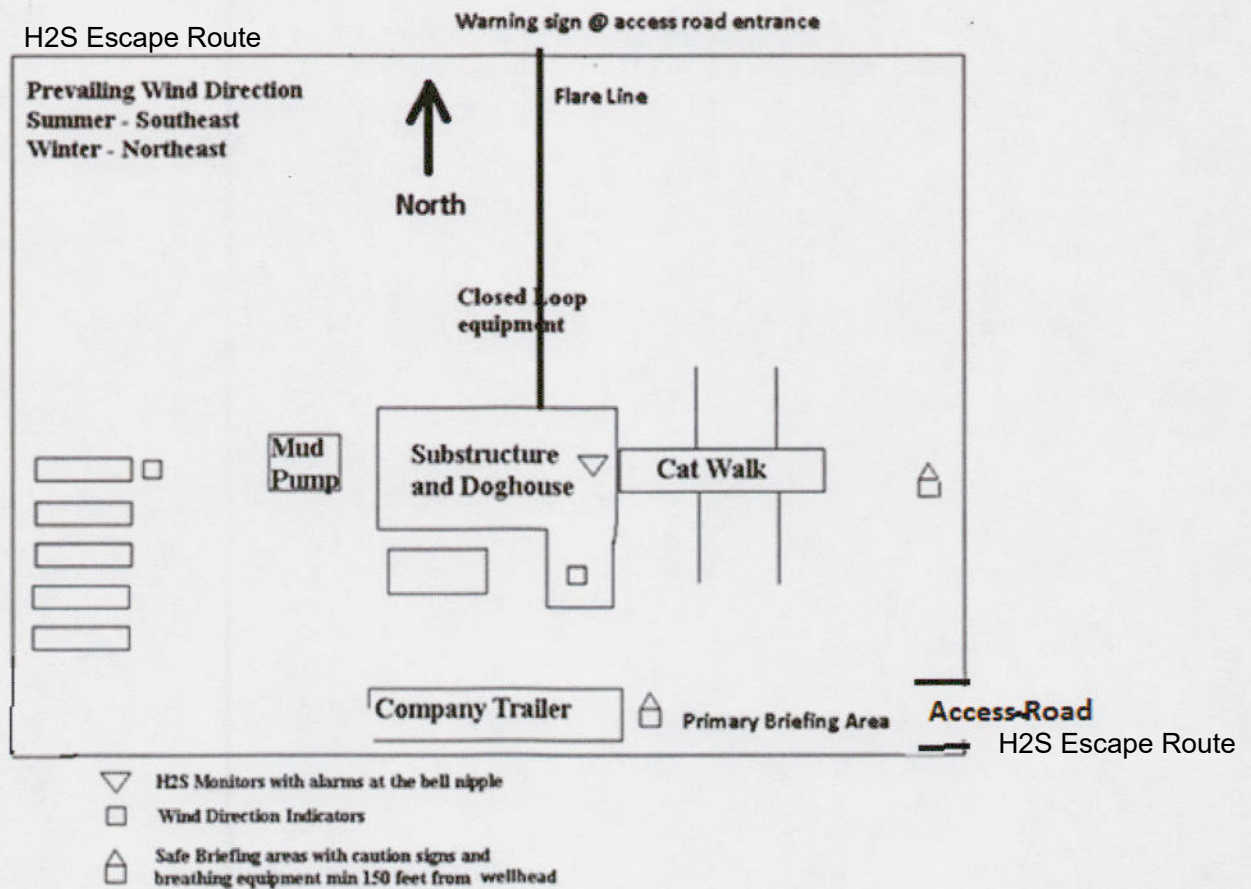
Chaves County, NM

B. There will be no drill stem testing.

EXHIBIT #7

WARNING**YOU ARE ENTERING AN H2S
AUTHORIZED PERSONNEL ONLY**

1. BEARDS OR CONTACT LENSES NOT ALLOWED
2. HARD HATS REQUIRED
3. SMOKING IN DESIGNATED AREAS ONLY
4. BE WIND CONSCIOUS AT ALL TIMES
5. CHECK WITH MACK ENERGY FOREMAN AT OFFICE

MACK ENERGY CORPORATION**1-575-748-1288**

District I
1625 N. French Dr., Hobbs, NM 88240
Phone:(575) 393-6161 Fax:(575) 393-0720
District II
811 S. First St., Artesia, NM 88210
Phone:(575) 748-1283 Fax:(575) 748-9720
District III
1000 Rio Brazos Rd., Aztec, NM 87410
Phone:(505) 334-6178 Fax:(505) 334-6170
District IV
1220 S. St Francis Dr., Santa Fe, NM 87505
Phone:(505) 476-3470 Fax:(505) 476-3462

State of New Mexico
Energy, Minerals and Natural Resources
Oil Conservation Division
1220 S. St Francis Dr.
Santa Fe, NM 87505

COMMENTS

Action 13749

COMMENTS

Operator: MACK ENERGY CORP P.O. Box 960 Artesia, NM 882110960	OGRID:
	13837
	Action Number:
	13749
Action Type: [C-101] BLM - Federal/Indian Land Lease (Form 3160-3)	

COMMENTS

Created By	Comment	Comment Date
kpickford	KP GEO Review 1/5/2020	1/5/2021
ahvermersch	API Issued 30-005-64359; well name will stay as is; Surface and 1st take point penetrate State Minerals.	3/8/2021

District I

1625 N. French Dr., Hobbs, NM 88240
 Phone:(575) 393-6161 Fax:(575) 393-0720

District II

811 S. First St., Artesia, NM 88210
 Phone:(575) 748-1283 Fax:(575) 748-9720

District III

1000 Rio Brazos Rd., Aztec, NM 87410
 Phone:(505) 334-6178 Fax:(505) 334-6170

District IV

1220 S. St Francis Dr., Santa Fe, NM 87505
 Phone:(505) 476-3470 Fax:(505) 476-3462

State of New Mexico
Energy, Minerals and Natural Resources
Oil Conservation Division
1220 S. St Francis Dr.
Santa Fe, NM 87505

CONDITIONS

Action 13749

CONDITIONS

Operator: MACK ENERGY CORP P.O. Box 960 Artesia, NM 882110960	OGRID:
	13837
	Action Number:
	13749
Action Type: [C-101] BLM - Federal/Indian Land Lease (Form 3160-3)	

CONDITIONS

Created By	Condition	Condition Date
kpickford	Notify OCD 24 hours prior to casing & cement	1/5/2021
kpickford	Will require a File As Drilled C-102 and a Directional Survey with the C-104	1/5/2021
kpickford	Once the well is spud, to prevent ground water contamination through whole or partial conduits from the surface, the operator shall drill without interruption through the fresh water zone or zones and shall immediately set in cement the water protection string	1/5/2021
kpickford	Oil base muds are not to be used until fresh water zones are cased and cemented providing isolation from the oil or diesel. This includes synthetic oils. Oil based mud, drilling fluids and solids must be contained in a steel closed loop system	1/5/2021
kpickford	Surface casing must be set 25' below top of Rustler Anhydrite or salt in order to seal off protectable water	1/5/2021