

District I
1625 N. French Dr., Hobbs, NM 88240
District II
811 S. First St., Artesia, NM 88210
District III
1000 Rio Brazos Rd., Aztec, NM 87410
District IV
1220 S. St. Francis Dr., Santa Fe, NM 87505

State of New Mexico
Energy, Minerals & Natural Resources

Form C-104
Revised August 1, 2011

Oil Conservation Division
1220 South St. Francis Dr.
Santa Fe, NM 87505

Submit one copy to appropriate District Office

AMENDED REPORT

I. REQUEST FOR ALLOWABLE AND AUTHORIZATION TO TRANSPORT

¹ Operator name and Address TAP ROCK OPERATING, LLC 523 PARK POINT DRIVE, SUITE 200 GOLDEN, CO 80401		² OGRID Number 372043
		³ Reason for Filing Code/ Effective Date NW
⁴ API Number 30 - 0 25-48783	⁵ Pool Name JAL; Wolfcamp	⁶ Pool Code 33813
⁷ Property Code 328905	⁸ Property Name Black Marlin Fed Com	⁹ Well Number 216H

II. ¹⁰ Surface Location

UI or lot no.	Section	Township	Range	Lot Idn	Feet from the	North/South Line	Feet from the	East/West line	County
B	18	25-S	36-E	-	183'	NORTH	1409'	EAST	LEA

¹¹ Bottom Hole Location

UL or lot no.	Section	Township	Range	Lot Idn	Feet from the	North/South line	Feet from the	East/West line	County
P	19	25-S	36-E	-	40'	SOUTH	1201'	EAST	LEA

¹² Lse Code F	¹³ Producing Method Code F	¹⁴ Gas Connection Date 1/27/2022	¹⁵ C-129 Permit Number	¹⁶ C-129 Effective Date	¹⁷ C-129 Expiration Date
-----------------------------	--	--	-----------------------------------	------------------------------------	-------------------------------------

III. Oil and Gas Transporters


¹⁸ Transporter OGRID	¹⁹ Transporter Name and Address	²⁰ O/G/W
373554	SALT CREEK MIDSTREAM, LLC 20329 STATE HIGHWAY 249 HOUSTON, TX U.S.A 77070	O
371960	LUCID ENERGY GROUP 3100 MCKINNON ST #800 DALLAS, TX 75201	G

IV. Well Completion Data

²¹ Spud Date 8/29/2021	²² Ready Date 1/4/2022	²³ TD 22258'	²⁴ PBSD 22194'	²⁵ Perforations 12059 ft to 22123 ft	²⁶ DHC, MC
²⁷ Hole Size	²⁸ Casing & Tubing Size	²⁹ Depth Set		³⁰ Sacks Cement	
17.5"	13.375"	1292'		1120 sks	
12.25"	9.625"	5280'		1573 sks	
8.75"	7.625"	11348'		537 sks	
6.75"	5.5"	22243'		1071 sks	

V. Well Test Data

³¹ Date New Oil 1/27/2022	³² Gas Delivery Date 1/27/2022	³³ Test Date 2/12/2022	³⁴ Test Length 24 hrs	³⁵ Tbg. Pressure 0	³⁶ Csg. Pressure 2025
³⁷ Choke Size 27/64	³⁸ Oil 873	³⁹ Water 4077	⁴⁰ Gas 1292		⁴¹ Test Method Flowing

⁴² I hereby certify that the rules of the Oil Conservation Division have been complied with and that the information given above is true and complete to the best of my knowledge and belief. Signature: 	OIL CONSERVATION DIVISION
	Approved by: PATRICIA MARTINEZ
	Title: PETROLEUM SPECIALIST
	Approval Date: 4/19/2023
Printed name: Jeff Trlica	
Title: Regulatory Analyst	
E-mail Address: jtrlica@taprk.com	
Date: 3/10/2022	Phone: 720-772-5901

District I
1625 N. French Dr., Hobbs, NM 88240
Phone: (575) 393-6161 Fax: (575) 393-0720
District II
811 S. First St., Artesia, NM 88210
Phone: (575) 748-1283 Fax: (575) 748-9720
District III
1000 Rio Brazos Road, Aztec, NM 87410
Phone: (505) 334-6178 Fax: (505) 334-6170
District IV
1220 S. St. Francis Dr., Santa Fe, NM 87505
Phone: (505) 476-3460 Fax: (505) 476-3462

State of New Mexico
Energy, Minerals & Natural Resources
Department
OIL CONSERVATION DIVISION
1220 South St. Francis Dr.
Santa Fe, NM 87505

FORM C-102
Revised August 1, 2011
Submit one copy to appropriate
District Office

AMENDED REPORT

WELL LOCATION AND ACREAGE DEDICATION PLAT

¹ API Number 30-025-48783		² Pool Code 33813		³ Pool Name JAL; WOLFCAMP, WEST	
⁴ Property Code 328905		⁵ Property Name BLACK MARLIN FED COM			⁶ Well Number 216H
⁷ OGRID No. #372043		⁸ Operator Name TAP ROCK OPERATING, LLC.			⁹ Elevation 3180'

¹⁰Surface Location

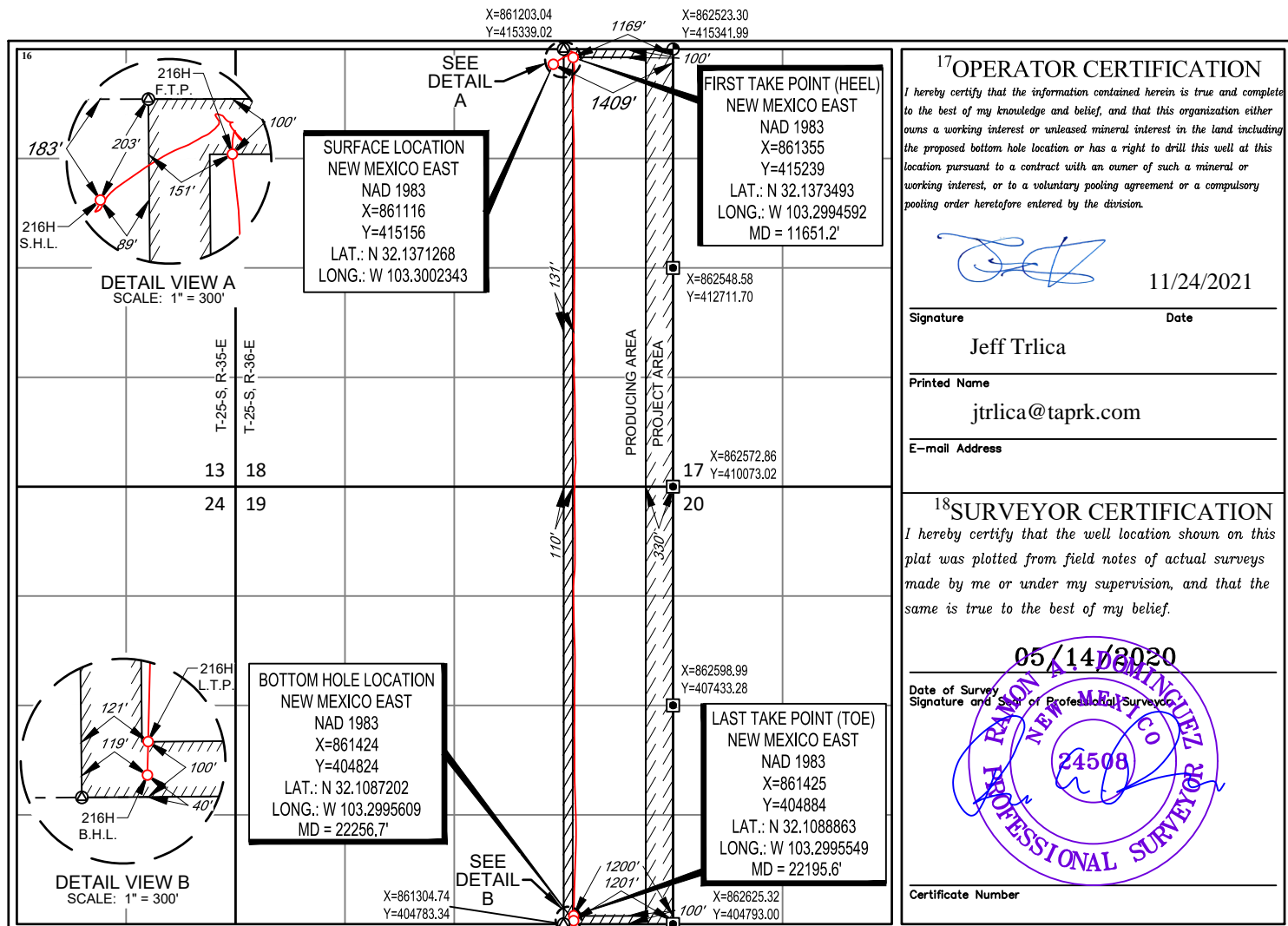
UL or lot no.	Section	Township	Range	Lot Idn	Feet from the	North/South line	Feet from the	East/West line	County
B	18	25-S	36-E	-	183'	NORTH	1409'	EAST	LEA

¹¹Bottom Hole Location If Different From Surface

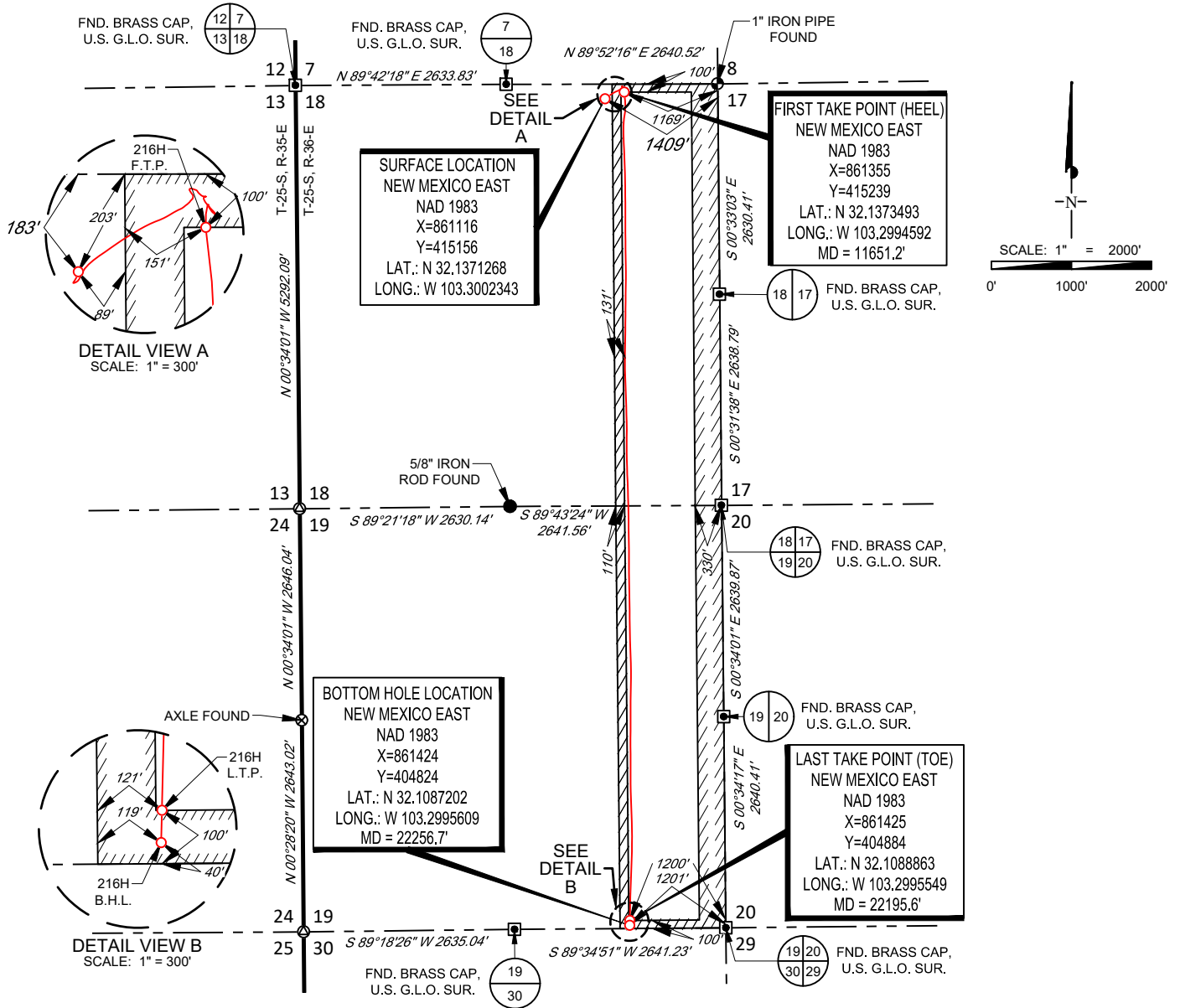
UL or lot no.	Section	Township	Range	Lot Idn	Feet from the	North/South line	Feet from the	East/West line	County
P	19	25-S	36-E	-	40'	SOUTH	1201'	EAST	LEA

¹² Dedicated Acres 320.00	¹³ Joint or Infill Infill	¹⁴ Consolidation Code	¹⁵ Order No.
---	---	----------------------------------	-------------------------

No allowable will be assigned to this completion until all interests have been consolidated or a non-standard unit has been approved by the division.



SECTION 18, TOWNSHIP 25-S, RANGE 36-E, N.M.P.M.
LEA COUNTY, NEW MEXICO



LEASE NAME & WELL NO.: BLACK MARLIN FED COM 216H
 SECTION 18 TWP 25-S RGE 36-E SURVEY N.M.P.M.
 COUNTY LEA STATE NM ELEVATION 3180'
 DESCRIPTION 183' FNL & 1409' FEL

INTERNAL
PRE-COMPLETION
PLAT



1400 EVERMAN PARKWAY, Ste. 146 • FT. WORTH, TEXAS 76140
 TELEPHONE: (817) 744-7512 • FAX (817) 744-7554
 2903 NORTH BIG SPRING • MIDLAND, TEXAS 79705
 TELEPHONE: (432) 682-1653 OR (800) 767-1653 • FAX (432) 682-1743
 WWW.TOPOGRAPHIC.COM

BLACK MARLIN FED COM 216H PRE-COMPLETION DATE: 11/10/2021 FILE: C:\BLACK_MARLIN_FED_COM_216H DRAWN BY: IMU SHEET: 2 OF 2	REVISION:	
	INT	DATE

NOTES:
 1. ORIGINAL DOCUMENT SIZE: 8.5" X 11"
 2. ALL BEARINGS, DISTANCES, AND COORDINATE VALUES CONTAINED HEREIN ARE GRID BASED UPON THE NEW MEXICO COORDINATE SYSTEM OF 1983, EAST ZONE, U.S. SURVEY FEET.
 3. THIS WELL LOCATION SHOWN HEREON HAS BEEN SURVEYED ON THE GROUND UNDER MY SUPERVISION AND PREPARED ACCORDING TO THE EVIDENCE FOUND AT THE TIME OF SURVEY, AND DATA PROVIDED BY TAP ROCK OPERATING, LLC. THIS CERTIFICATION IS MADE AND LIMITED TO THOSE PERSONS OR ENTITIES SHOWN ON THE FACE OF THIS PLAT AND IS NON-TRANSFERABLE. THIS SURVEY IS CERTIFIED FOR THIS TRANSACTION ONLY.



Operator: TapRock Resources LLC
Well Name: Black Marlin Fed Com #216H
County: Lea
State: New Mexico
Rig Name: H&P 388
API: 30-025-48783

Intrepid Directional Drilling Specialists certifies that the surveys performed on the above referenced well are true and correct MWD surveys, data provided as follows:

Surveyor: Intrepid Directional Drilling Specialists
Survey Depths: 172' MD – 22,193' MD
Projection to Bit: 22,258' MD
Dates Performed: 08/29/2021 – 10/21/2021
Type of Survey: MWD

Sincerely,

A handwritten signature in black ink, appearing to read "T. Henk".

Travis Henk
MWD Operations Manager
Intrepid Directional Drilling Specialists





Operator: **Tap Rock Resources, LLC**
 Well Name: **Black Marlin Fed Com 216H**
 Job Number: **ID3017**
 Survey Company: **Intrepid Directional Drilling Specialists**
 Rig Name: **H&P 388**

Target KBTVD: **11705.00**
 Target Inclination: **87.00°**
 Declination Correction: **5.80°**
 DF Elevation: **3206'**

Vertical Section Calculated Along Azimuth: **179.43°**
 Survey Calculation Method: **Minimum Curvature**

TIE PT. TYPE	SVY #	Survey Depth	INC deg.	AZM deg.	Course Length	TVD Ft.	V'Sect FT.	+N/-S Ft.	+E/-W Ft.	Dogleg %/100'
Tie In	0	0	0.00	0.00	0	0	0	0	0	0.00
MWD	1	172	1.14	173.24	172	171.99	1.70	-1.70	0.20	0.66
MWD	2	230	1.14	177.28	58	229.98	2.85	-2.85	0.30	0.14
MWD	3	325	1.27	193.46	95	324.96	4.82	-4.82	0.10	0.38
MWD	4	416	1.10	204.53	91	415.94	6.59	-6.59	-0.50	0.31
MWD	5	507	1.36	220.35	91	506.92	8.19	-8.21	-1.56	0.47
MWD	6	597	1.14	218.59	90	596.89	9.69	-9.72	-2.81	0.25
MWD	7	688	1.05	206.11	91	687.88	11.14	-11.18	-3.74	0.28
MWD	8	778	0.92	208.22	90	777.86	12.51	-12.56	-4.45	0.15
MWD	9	869	0.88	210.24	91	868.85	13.75	-13.80	-5.15	0.06
MWD	10	960	0.97	213.06	91	959.84	14.99	-15.05	-5.92	0.11
MWD	11	1050	1.05	212.70	90	1049.83	16.32	-16.39	-6.78	0.09
MWD	12	1141	1.10	219.21	91	1140.81	17.69	-17.76	-7.78	0.14
MWD	13	1236	0.97	210.60	95	1235.80	19.07	-19.16	-8.77	0.21
MWD	14	1337	0.62	206.55	101	1336.79	20.29	-20.39	-9.45	0.35
MWD	15	1433	0.48	115.23	96	1432.78	20.93	-21.02	-9.32	0.83
MWD	16	1528	1.85	72.34	95	1527.76	20.65	-20.73	-7.49	1.61
MWD	17	1622	2.37	65.40	94	1621.70	19.41	-19.46	-4.28	0.62
MWD	18	1716	2.86	47.91	94	1715.60	17.07	-17.08	-0.77	0.99
MWD	19	1810	3.03	28.40	94	1809.48	13.34	-13.32	2.15	1.08
MWD	20	1905	4.00	22.51	95	1904.30	8.10	-8.05	4.61	1.09
MWD	21	1998	5.05	26.29	93	1997.01	1.46	-1.38	7.67	1.17
MWD	22	2092	5.80	37.45	94	2090.59	-5.97	6.10	12.39	1.37
MWD	23	2187	6.95	46.06	95	2185.00	-13.70	13.90	19.44	1.57
MWD	24	2282	7.96	52.04	95	2279.20	-21.64	21.93	28.77	1.34
MWD	25	2377	8.22	55.38	95	2373.26	-29.44	29.84	39.54	0.57
MWD	26	2470	7.96	54.85	93	2465.33	-36.82	37.32	50.28	0.29
MWD	27	2564	7.82	54.85	94	2558.44	-44.14	44.75	60.83	0.15
MWD	28	2659	7.65	55.82	95	2652.58	-51.31	52.02	71.35	0.23
MWD	29	2754	7.69	56.44	95	2746.73	-58.27	59.09	81.87	0.10
MWD	30	2848	7.78	57.75	94	2839.87	-65.04	65.96	92.50	0.21
MWD	31	2943	7.91	58.90	95	2933.98	-71.73	72.77	103.53	0.21
MWD	32	3038	7.38	60.04	95	3028.14	-78.05	79.19	114.42	0.58
MWD	33	3133	7.12	61.88	95	3122.38	-83.77	85.01	124.89	0.37
MWD	34	3228	6.46	65.31	95	3216.71	-88.67	90.02	134.94	0.82
MWD	35	3323	5.80	68.56	95	3311.17	-92.57	94.01	144.27	0.78
MWD	36	3418	5.41	69.35	95	3405.71	-95.81	97.34	152.92	0.42
MWD	37	3513	4.18	63.64	95	3500.38	-98.86	100.46	160.22	1.39
MWD	38	3608	3.78	58.54	95	3595.15	-101.97	103.63	165.99	0.56
MWD	39	3703	3.47	62.06	95	3689.96	-104.90	106.61	171.20	0.40
MWD	40	3797	3.03	58.98	94	3783.81	-107.47	109.22	175.84	0.50
MWD	41	3891	2.86	59.16	94	3877.69	-109.91	111.71	179.99	0.18
MWD	42	3984	2.55	60.30	93	3970.58	-112.09	113.92	183.78	0.34
MWD	43	4079	2.42	66.89	95	4065.49	-113.88	115.76	187.46	0.33
MWD	44	4173	2.33	68.56	94	4159.41	-115.33	117.23	191.06	0.12
MWD	45	4268	2.51	58.72	95	4254.33	-117.08	119.02	194.64	0.48
MWD	46	4363	2.64	50.02	95	4349.23	-119.53	121.50	198.09	0.43
MWD	47	4459	2.59	50.55	96	4445.13	-122.29	124.30	201.46	0.06
MWD	48	4553	1.67	52.04	94	4539.07	-124.46	126.50	204.18	0.98
MWD	49	4648	1.05	50.19	95	4634.04	-125.85	127.90	205.94	0.65
MWD	50	4743	1.05	47.47	95	4729.02	-126.98	129.05	207.25	0.05
MWD	51	4836	1.23	43.25	93	4822.00	-128.27	130.35	208.56	0.21
MWD	52	4930	1.10	35.34	94	4915.98	-129.73	131.82	209.77	0.22
MWD	53	5025	1.23	41.05	95	5010.97	-131.23	133.34	210.97	0.18
MWD	54	5120	1.23	42.90	95	5105.94	-132.73	134.85	212.34	0.04
MWD	55	5215	1.23	45.98	95	5200.92	-134.17	136.31	213.76	0.07
MWD	56	5226	1.19	37.54	11	5211.92	-134.35	136.48	213.92	1.66
MWD	57	5298	0.79	26.38	72	5283.91	-135.38	137.52	214.59	0.61
MWD	58	5393	0.97	3.70	95	5378.90	-136.76	138.91	214.94	0.41
MWD	59	5487	0.92	9.85	94	5472.88	-138.30	140.44	215.12	0.12
MWD	60	5582	0.75	2.47	95	5567.87	-139.67	141.82	215.27	0.21
MWD	61	5677	0.7	334.7	95	5662.87	-140.82	142.96	215.05	0.37
MWD	62	5771	0.88	327.49	94	5756.86	-141.95	144.09	214.42	0.22

MWD	63	5866	1.05	323.45	95	5851.84	-143.27	145.41	213.51	0.19
MWD	64	5961	1.14	326.96	95	5946.83	-144.78	146.90	212.48	0.12
MWD	65	6055	1.05	319.84	94	6040.81	-146.23	148.34	211.41	0.17
MWD	66	6150	1.19	328.72	95	6135.79	-147.75	149.85	210.34	0.23
MWD	67	6245	1.23	327.49	95	6230.77	-149.46	151.55	209.28	0.05
MWD	68	6340	0.92	341.29	95	6325.75	-151.05	153.13	208.48	0.42
MWD	69	6435	0.44	16.97	95	6420.75	-152.12	154.20	208.35	0.65
MWD	70	6530	0.7	18.47	95	6515.74	-153.02	155.10	208.64	0.27
MWD	71	6624	1.1	75.07	94	6609.73	-153.79	155.88	209.69	0.98
MWD	72	6719	1.67	96.69	95	6704.71	-153.84	155.95	211.95	0.80
MWD	73	6812	1.27	106.53	93	6797.67	-153.36	155.50	214.28	0.51
MWD	74	6905	1.01	116.55	93	6890.66	-152.69	154.84	216.00	0.35
MWD	75	7000	0.79	108.82	95	6985.64	-152.09	154.26	217.37	0.26
MWD	76	7095	0.66	108.03	95	7080.64	-151.70	153.88	218.51	0.14
MWD	77	7190	0.75	111.28	95	7175.63	-151.29	153.48	219.61	0.10
MWD	78	7284	0.53	102.05	94	7269.62	-150.97	153.17	220.61	0.26
MWD	79	7379	0.88	125.52	95	7364.62	-150.44	152.65	221.63	0.47
MWD	80	7474	1.23	140.46	95	7459.60	-149.22	151.44	222.87	0.47
MWD	81	7569	1.58	143.97	95	7554.57	-147.36	149.60	224.29	0.38
MWD	82	7664	1.89	140.02	95	7649.53	-145.08	147.34	226.07	0.35
MWD	83	7759	1.89	132.02	95	7744.48	-142.81	145.09	228.24	0.28
MWD	84	7853	1.8	127.45	94	7838.43	-140.85	143.15	230.56	0.18
MWD	85	7947	1.76	110.4	94	7932.38	-139.43	141.75	233.09	0.56
MWD	86	8042	1.76	96.34	95	8027.34	-138.73	141.08	235.91	0.45
MWD	87	8137	0.97	93.61	95	8122.31	-138.49	140.87	238.16	0.83
MWD	88	8231	0.35	65.49	94	8216.30	-138.55	140.94	239.21	0.73
MWD	89	8326	0.62	258.32	95	8311.30	-138.57	140.96	238.98	1.02
MWD	90	8421	1.05	254.54	95	8406.29	-138.25	140.62	237.63	0.46
MWD	91	8515	1.19	232.48	94	8500.28	-137.44	139.80	236.03	0.48
MWD	92	8610	1.14	193.37	95	8595.26	-135.93	138.28	235.03	0.82
MWD	93	8705	1.54	158.56	95	8690.23	-133.82	136.17	235.28	0.93
MWD	94	8799	2.29	153.82	94	8784.18	-130.95	133.31	236.57	0.81
MWD	95	8894	2.42	144.06	95	8879.10	-127.60	129.98	238.58	0.44
MWD	96	8989	2.68	137.91	95	8974.01	-124.30	126.71	241.25	0.40
MWD	97	9084	2.77	143.27	95	9068.90	-120.78	123.22	244.11	0.28
MWD	98	9177	2.33	135.27	93	9161.81	-117.61	120.08	246.78	0.61
MWD	99	9272	2.68	139.23	95	9256.72	-114.53	117.02	249.59	0.41
MWD	100	9367	2.46	131.67	95	9351.62	-111.47	113.98	252.57	0.42
MWD	101	9461	2.07	139.58	94	9445.55	-108.81	111.35	255.17	0.53
MWD	102	9556	2.29	145.82	95	9540.48	-105.91	108.47	257.35	0.34
MWD	103	9651	2.11	141.51	95	9635.41	-102.95	105.53	259.51	0.26
MWD	104	9747	0.40	8.18	96	9731.39	-101.88	104.48	260.65	2.50
MWD	105	9841	1.27	312.20	94	9825.38	-102.92	105.51	259.93	1.17
MWD	106	9936	0.97	305.52	95	9920.36	-104.11	106.68	258.50	0.34
MWD	107	10031	0.84	276.34	95	10015.35	-104.66	107.23	257.15	0.50
MWD	108	10124	0.57	317.21	93	10108.34	-105.09	107.64	256.16	0.60
MWD	109	10219	0.13	160.15	95	10203.34	-105.34	107.89	255.87	0.73
MWD	110	10314	0.40	109.61	95	10298.34	-105.12	107.67	256.22	0.35
MWD	111	10408	0.79	99.59	94	10392.33	-104.89	107.46	257.17	0.43
MWD	112	10503	0.70	86.76	95	10487.33	-104.80	107.38	258.39	0.20
MWD	113	10598	1.45	297.34	95	10582.32	-105.39	107.96	257.91	2.19
MWD	114	10693	2.37	292.77	95	10677.26	-106.73	109.28	255.03	0.98
MWD	115	10787	1.89	313.43	94	10771.20	-108.58	111.09	252.11	0.96
MWD	116	10882	1.76	327.23	95	10866.15	-110.90	113.40	250.18	0.48
MWD	117	10977	1.58	320.72	95	10961.11	-113.16	115.64	248.56	0.27
MWD	118	11071	1.85	328.63	94	11055.07	-115.47	117.94	246.95	0.38
MWD	119	11166	1.45	327.58	95	11150.03	-117.81	120.26	245.51	0.42
MWD	120	11260	1.67	347.44	94	11244.00	-120.16	122.60	244.57	0.62
MWD	121	11355	1.41	358.87	95	11338.96	-122.69	125.12	244.25	0.42
MWD	122	11385	1.54	350.08	30	11368.95	-123.45	125.89	244.17	0.87
MWD	123	11480	3.82	213.84	95	11463.89	-122.10	124.52	242.19	5.31
MWD	124	11575	16.53	184.39	95	11557.24	-105.95	108.34	239.38	14.03
MWD	125	11669	22.90	176.48	94	11645.70	-74.33	76.71	239.48	7.33
MWD	126	11764	29.19	170.86	95	11731.03	-32.91	35.35	244.30	7.11
MWD	127	11859	40.09	175.43	95	11809.08	20.68	-18.19	250.44	11.79
MWD	128	11954	50.37	178.59	95	11875.91	87.96	-85.44	253.78	11.07
MWD	129	12049	60.31	187.21	95	11929.93	165.72	-163.25	249.49	12.84
MWD	130	12144	66.51	188.88	95	11972.44	249.66	-247.31	237.57	6.71
MWD	131	12183	72.84	184.66	39	11985.98	285.91	-283.60	233.29	19.14
MWD	132	12240	77.32	182.02	57	12000.66	340.84	-338.57	230.10	9.04
MWD	133	12334	87.47	178.68	94	12013.09	433.87	-431.61	229.56	11.36
MWD	134	12455	85.36	177.27	121	12020.65	554.58	-552.29	233.83	2.10
MWD	135	12550	84.84	177.27	95	12028.77	649.17	-646.83	238.34	0.55
MWD	136	12644	86.02	178.24	94	12036.26	742.83	-740.46	242.01	1.62
MWD	137	12738	87.96	178.15	94	12041.19	836.67	-834.28	244.96	2.07
MWD	138	12831	87.56	178.24	93	12044.83	929.58	-927.16	247.89	0.44

MWD	139	12926	88.62	178.68	95	12047.99	1024.51	-1022.07	250.44	1.21
MWD	140	13021	89.80	179.47	95	12049.30	1119.50	-1117.05	251.97	1.49
MWD	141	13112	90.07	179.74	91	12049.41	1210.50	-1208.04	252.60	0.42
MWD	142	13206	89.89	179.74	94	12049.44	1304.50	-1302.04	253.03	0.19
MWD	143	13301	89.27	179.91	95	12050.14	1399.49	-1397.04	253.32	0.68
MWD	144	13396	89.36	180.18	95	12051.27	1494.48	-1492.03	253.24	0.30
MWD	145	13491	89.14	179.74	95	12052.51	1589.47	-1587.02	253.31	0.52
MWD	146	13586	88.70	179.56	95	12054.30	1684.45	-1682.00	253.89	0.50
MWD	147	13681	88.40	179.56	95	12056.71	1779.42	-1776.97	254.62	0.32
MWD	148	13776	88.13	179.65	95	12059.59	1874.37	-1871.93	255.27	0.30
MWD	149	13869	86.64	178.77	93	12063.83	1967.27	-1964.82	256.55	1.86
MWD	150	13965	87.16	178.51	96	12069.02	2063.12	-2060.65	258.83	0.61
MWD	151	14059	90.15	179.74	94	12071.23	2157.08	-2154.60	260.26	3.44
MWD	152	14153	91.25	180.79	94	12070.08	2251.06	-2248.59	259.83	1.62
MWD	153	14247	90.95	180.88	94	12068.27	2345.02	-2342.56	258.46	0.33
MWD	154	14341	89.71	180.44	94	12067.73	2438.99	-2436.55	257.38	1.40
MWD	155	14434	89.98	180.53	93	12067.98	2531.97	-2529.55	256.59	0.31
MWD	156	14529	89.89	180.61	95	12068.09	2626.96	-2624.54	255.64	0.13
MWD	157	14623	91.30	180.26	94	12067.11	2720.93	-2718.53	254.93	1.55
MWD	158	14716	88.70	180.61	93	12067.11	2813.91	-2811.52	254.23	2.82
MWD	159	14811	88.31	180.53	95	12069.59	2908.86	-2906.48	253.28	0.42
MWD	160	14905	88.00	180.70	94	12072.62	3002.79	-3000.43	252.27	0.38
MWD	161	15000	87.12	181.14	95	12076.66	3097.67	-3095.33	250.75	1.04
MWD	162	15094	86.33	180.97	94	12082.03	3191.48	-3189.16	249.02	0.86
MWD	163	15189	86.37	180.18	95	12088.08	3286.27	-3283.96	248.07	0.83
MWD	164	15284	87.25	178.59	95	12093.37	3381.12	-3378.81	249.09	1.91
MWD	165	15379	89.63	178.24	95	12095.96	3476.06	-3473.73	251.71	2.53
MWD	166	15473	88.92	177.45	94	12097.14	3570.01	-3567.65	255.25	1.13
MWD	167	15568	89.10	178.33	95	12098.79	3664.96	-3662.57	258.75	0.95
MWD	168	15663	85.63	178.15	95	12103.15	3759.83	-3757.41	261.66	3.66
MWD	169	15758	84.00	178.33	95	12111.74	3854.42	-3851.98	264.57	1.73
MWD	170	15853	84.97	178.15	95	12120.87	3948.96	-3946.49	267.47	1.04
MWD	171	15948	85.19	178.51	95	12129.02	4043.59	-4041.10	270.23	0.44
MWD	172	16043	87.43	180.00	95	12135.13	4138.38	-4135.89	271.46	2.83
MWD	173	16137	86.86	180.61	94	12139.81	4232.25	-4229.77	270.96	0.89
MWD	174	16232	84.79	180.00	95	12146.73	4326.98	-4324.51	270.45	2.27
MWD	175	16326	83.34	179.47	94	12156.45	4420.48	-4418.00	270.89	1.64
MWD	176	16420	83.74	178.77	94	12167.02	4513.88	-4511.39	272.32	0.85
MWD	177	16514	84.31	178.33	94	12176.81	4607.36	-4604.85	274.69	0.76
MWD	178	16609	85.23	177.89	95	12185.47	4701.93	-4699.40	277.81	1.07
MWD	179	16704	85.01	177.54	95	12193.55	4796.55	-4793.98	281.58	0.43
MWD	180	16799	86.29	178.59	95	12200.75	4891.24	-4888.65	284.78	1.74
MWD	181	16893	86.77	178.33	94	12206.44	4985.06	-4982.44	287.30	0.58
MWD	182	16987	86.24	178.68	94	12212.17	5078.87	-5076.24	289.75	0.68
MWD	183	17082	85.89	178.68	95	12218.69	5173.64	-5170.99	291.93	0.37
MWD	184	17176	87.96	179.74	94	12223.74	5267.49	-5264.84	293.22	2.47
MWD	185	17271	87.12	179.30	95	12227.81	5362.41	-5359.75	294.02	1.00
MWD	186	17364	87.56	179.56	93	12232.13	5455.30	-5452.64	294.94	0.55
MWD	187	17459	87.82	178.33	95	12235.96	5550.22	-5547.55	296.69	1.32
MWD	188	17553	88.18	179.38	94	12239.24	5644.16	-5641.47	298.57	1.18
MWD	189	17647	89.76	180.09	94	12240.93	5738.14	-5735.45	299.00	1.84
MWD	190	17743	89.67	179.91	96	12241.41	5834.13	-5831.45	299.00	0.21
MWD	191	17835	91.21	180.09	92	12240.70	5926.12	-5923.44	299.00	1.69
MWD	192	17930	91.43	178.94	95	12238.51	6021.10	-6018.41	299.81	1.23
MWD	193	18024	91.47	178.42	94	12236.13	6115.06	-6112.36	301.97	0.55
MWD	194	18119	90.81	179.30	95	12234.24	6210.03	-6207.32	303.86	1.16
MWD	195	18214	91.74	178.94	95	12232.13	6305.01	-6302.28	305.32	1.05
MWD	196	18308	92.84	179.82	94	12228.37	6398.93	-6396.20	306.34	1.50
MWD	197	18403	93.85	179.47	95	12222.83	6493.76	-6491.03	306.92	1.12
MWD	198	18498	94.59	178.77	95	12215.84	6588.50	-6585.76	308.38	1.07
MWD	199	18593	94.77	178.77	95	12208.09	6683.18	-6680.42	310.41	0.19
MWD	200	18687	94.90	178.15	94	12200.17	6776.83	-6774.06	312.93	0.67
MWD	201	18781	94.51	178.33	94	12192.45	6870.50	-6867.69	315.81	0.46
MWD	202	18876	93.89	177.63	95	12185.50	6965.21	-6962.38	319.15	0.98
MWD	203	18970	94.51	178.68	94	12178.61	7058.93	-7056.08	322.16	1.29
MWD	204	19065	95.78	179.30	95	12170.09	7153.54	-7150.68	323.83	1.49
MWD	205	19159	96.53	180.61	94	12160.01	7247.00	-7244.13	323.91	1.60
MWD	206	19254	96.66	181.05	95	12149.10	7341.34	-7338.49	322.54	0.48
MWD	207	19349	94.64	181.05	95	12139.75	7435.83	-7433.01	320.81	2.13
MWD	208	19443	94.99	180.53	94	12131.86	7529.48	-7526.67	319.52	0.67
MWD	209	19537	95.56	179.82	94	12123.22	7623.07	-7620.27	319.23	0.97
MWD	210	19632	93.19	180.79	95	12115.97	7717.77	-7714.98	318.72	2.69
MWD	211	19726	90.15	179.56	94	12113.23	7811.71	-7808.93	318.44	3.49
MWD	212	19819	88.75	180.35	93	12114.13	7904.70	-7901.92	318.51	1.73
MWD	213	19914	86.81	180.35	95	12117.81	7999.61	-7996.85	317.93	2.04
MWD	214	20009	86.86	179.74	95	12123.05	8094.46	-8091.70	317.86	0.64

MWD	215	20107	85.85	179.47	98	12129.28	8192.26	-8189.50	318.53	1.07
MWD	216	20203	86.59	180.00	96	12135.61	8288.05	-8285.29	318.97	0.95
MWD	217	20297	85.14	180.09	94	12142.39	8381.80	-8379.04	318.90	1.55
MWD	218	20390	84.79	179.82	93	12150.55	8474.44	-8471.68	318.97	0.47
MWD	219	20485	84.40	179.47	95	12159.50	8569.01	-8566.26	319.56	0.55
MWD	220	20579	86.99	178.51	94	12166.55	8662.73	-8659.97	321.21	2.94
MWD	221	20673	89.05	177.89	94	12169.80	8756.65	-8753.86	324.16	2.29
MWD	222	20768	89.71	178.59	95	12170.83	8851.62	-8848.81	327.08	1.01
MWD	223	20862	89.41	177.45	94	12171.55	8945.59	-8942.75	330.33	1.25
MWD	224	20956	90.29	179.03	94	12171.80	9039.57	-9036.70	333.22	1.92
MWD	225	21049	89.85	178.68	93	12171.68	9132.56	-9129.68	335.07	0.60
MWD	226	21141	89.36	179.47	92	12172.32	9224.56	-9221.66	336.56	1.01
MWD	227	21237	88.70	180.61	96	12173.94	9320.54	-9317.65	336.49	1.37
MWD	228	21332	86.07	180.70	95	12178.28	9415.41	-9412.54	335.41	2.77
MWD	229	21425	85.85	182.37	93	12184.83	9508.11	-9505.27	332.92	1.81
MWD	230	21520	84.18	182.20	95	12193.08	9602.63	-9599.83	329.15	1.77
MWD	231	21615	83.65	182.20	95	12203.16	9696.98	-9694.22	325.52	0.56
MWD	232	21709	83.30	181.84	94	12213.84	9790.28	-9787.56	322.23	0.53
MWD	233	21802	83.60	182.02	93	12224.45	9882.58	-9879.90	319.12	0.38
MWD	234	21897	84.31	181.49	95	12234.45	9976.98	-9974.32	316.23	0.93
MWD	235	21991	83.30	181.41	94	12244.59	10070.37	-10067.74	313.86	1.08
MWD	236	22086	82.81	181.49	95	12256.08	10164.61	-10162.02	311.47	0.52
MWD	237	22181	81.98	181.23	95	12268.65	10258.72	-10256.15	309.24	0.91
MWD	238	22193	81.85	181.23	12	12270.34	10270.60	-10268.03	308.98	1.08
PTB	239	22258	81.85	181.23	65	12279.56	10334.91	-10332.36	307.60	0.00

Well Name: BLACK MARLIN FED COM	Well Location: T25S / R36E / SEC 18 / NWNE / 32.137127 / -103.3002343	County or Parish/State: LEA / NM
Well Number: 216H	Type of Well: OIL WELL	Allottee or Tribe Name:
Lease Number: NMNM127449	Unit or CA Name:	Unit or CA Number:
US Well Number: 3002548783	Well Status: Drilling Well	Operator: TAP ROCK OPERATING LLC

Subsequent Report

Sundry ID: 2651158

Type of Submission: Subsequent Report

Type of Action: Drilling Operations

Date Sundry Submitted: 01/05/2022

Time Sundry Submitted: 10:05

Date Operation Actually Began: 11/14/2021

Actual Procedure: 11/14/2021: Pressure test casing to 5000 psi for 30 minutes, good test. 11/15/2021 to 12/14/2021: Perforate from 12059 ft to 22123 ft, 1 SPF, .55 inch holes with 663 total shots. 51 stage frac with 27,564,952 lbs of 100 mesh sand. 1/1/2022 to 1/3/2022: Drill out plugs Plug Back Measured depth at 22258 ft MD, 12279 ft TVD. 1/4/2022: Ready to produce

Well Name: BLACK MARLIN FED COM	Well Location: T25S / R36E / SEC 18 / NWNE / 32.137127 / -103.3002343	County or Parish/State: LEA / NM
Well Number: 216H	Type of Well: OIL WELL	Allottee or Tribe Name:
Lease Number: NMNM127449	Unit or CA Name:	Unit or CA Number:
US Well Number: 3002548783	Well Status: Drilling Well	Operator: TAP ROCK OPERATING LLC

Operator Certification

I certify that the foregoing is true and correct. Title 18 U.S.C. Section 1001 and Title 43 U.S.C. Section 1212, make it a crime for any person knowingly and willfully to make to any department or agency of the United States any false, fictitious or fraudulent statements or representations as to any matter within its jurisdiction. Electronic submission of Sundry Notices through this system satisfies regulations requiring a submission of Form 3160-5 or a Sundry Notice.

Operator Electronic Signature: JEFFREY TRLICA **Signed on:** JAN 05, 2022 10:05 AM

Name: TAP ROCK OPERATING LLC

Title: Regulatory Analyst

Street Address: 523 PARK POINT DRIVE SUITE 200

City: GOLDEN **State:** CO

Phone: (720) 772-5910

Email address: JTRLICA@TAPRK.COM

Field Representative

Representative Name:

Street Address:

City: **State:** **Zip:**

Phone:

Email address:

BLM Point of Contact

BLM POC Name: Jonathon W Shepard	BLM POC Title: Petroleum Engineer
BLM POC Phone: 5752345972	BLM POC Email Address: jshepard@blm.gov
Disposition: Accepted	Disposition Date: 01/19/2022
Signature: Jonathon Shepard	

Submit To Appropriate District Office Two Copies District I 1625 N. French Dr., Hobbs, NM 88240 District II 811 S. First St., Artesia, NM 88210 District III 1000 Rio Brazos Rd., Aztec, NM 87410 District IV 1220 S. St. Francis Dr., Santa Fe, NM 87505	State of New Mexico Energy, Minerals and Natural Resources Oil Conservation Division 1220 South St. Francis Dr. Santa Fe, NM 87505	Form C-105 Revised April 3, 2017
		1. WELL API NO. 30-025-48783
		2. Type of Lease <input type="checkbox"/> STATE <input type="checkbox"/> FEE <input checked="" type="checkbox"/> FED/INDIAN
		3. State Oil & Gas Lease No.

WELL COMPLETION OR RECOMPLETION REPORT AND LOG

4. Reason for filing: <input checked="" type="checkbox"/> COMPLETION REPORT (Fill in boxes #1 through #31 for State and Fee wells only) <input type="checkbox"/> C-144 CLOSURE ATTACHMENT (Fill in boxes #1 through #9, #15 Date Rig Released and #32 and/or #33; attach this and the plat to the C-144 closure report in accordance with 19.15.17.13.K NMAC)	5. Lease Name or Unit Agreement Name BLACK MARLIN FED COM 6. Well Number: 216H
---	---

7. Type of Completion:
 NEW WELL WORKOVER DEEPENING PLUGBACK DIFFERENT RESERVOIR OTHER

8. Name of Operator TAP ROCK OPERATING, LLC	9. OGRID 372043
--	--------------------

10. Address of Operator 523 PARK POINT DRIVE, SUITE 200, GOLDEN, CO	11. Pool name or Wildcat JAL; WOLFCAMP
--	---

12. Location	Unit Ltr	Section	Township	Range	Lot	Feet from the	N/S Line	Feet from the	E/W Line	County
Surface:	B	18	25-S	36-E	-	183'	NORTH	1409'	EAST	LEA
BH:	P	19	25-S	36-E	-	40'	SOUTH	1201'	EAST	LEA

13. Date Spudded 8/29/2021	14. Date T.D. Reached 10/20/2021	15. Date Rig Released 10/24/2021	16. Date Completed (Ready to Produce) 1/4/2022	17. Elevations (DF and RKB, RT, GR, etc.) 3180 GR
-------------------------------	-------------------------------------	-------------------------------------	---	--

18. Total Measured Depth of Well 22258'	19. Plug Back Measured Depth 22194'	20. Was Directional Survey Made? YES	21. Type Electric and Other Logs Run GAMMA
--	--	---	---

22. Producing Interval(s), of this completion - Top, Bottom, Name
 12059 ft to 22123 ft, WOLFCAMP

23. CASING RECORD (Report all strings set in well)

CASING SIZE	WEIGHT LB./FT.	DEPTH SET	HOLE SIZE	CEMENTING RECORD	AMOUNT PULLED
13.375"	54.5	1292'	17.5"	1120 SKS	0
9.625"	40	5280'	12.25"	1573 SKS	0
7.625"	29.7	11348'	8.75"	537 SKS	0
5.5"	23	22243'	6.75"	1071 SKS	0

24. LINER RECORD

SIZE	TOP	BOTTOM	SACKS CEMENT	SCREEN

25. TUBING RECORD

SIZE	DEPTH SET	PACKER SET

26. Perforation record (interval, size, and number) Perforate from 12059 ft to 22123 ft, 1 SPF, .55 inch holes with 663 total shots	27. ACID, SHOT, FRACTURE, CEMENT, SQUEEZE, ETC. DEPTH INTERVAL AMOUNT AND KIND MATERIAL USED 12059 ft to 22123 ft 51 stage frac with 27,564,952 lbs of 100 mesh sand
--	--

28. PRODUCTION

Date First Production 1/27/2022	Production Method (<i>Flowing, gas lift, pumping - Size and type pump</i>) FLOWING	Well Status (<i>Prod. or Shut-in</i>) PRODUCING
------------------------------------	---	--

Date of Test 2/12/2022	Hours Tested 24	Choke Size 27/64	Prod'n For Test Period	Oil - Bbl 873	Gas - MCF 1292	Water - Bbl. 4077	Gas - Oil Ratio 676
---------------------------	--------------------	---------------------	------------------------	------------------	-------------------	----------------------	------------------------

Flow Tubing Press. 0	Casing Pressure 2025	Calculated 24-Hour Rate	Oil - Bbl. 873	Gas - MCF 1292	Water - Bbl. 34077	Oil Gravity - API - (<i>Corr.</i>)
-------------------------	-------------------------	-------------------------	-------------------	-------------------	-----------------------	--------------------------------------

29. Disposition of Gas (<i>Sold, used for fuel, vented, etc.</i>) SOLD	30. Test Witnessed By
---	-----------------------

31. List Attachments
DIRECTIONAL SURVEY, C-102 AS DRILLED

32. If a temporary pit was used at the well, attach a plat with the location of the temporary pit.	33. Rig Release Date:
--	-----------------------

34. If an on-site burial was used at the well, report the exact location of the on-site burial:
 Latitude _____ Longitude _____ NAD83

I hereby certify that the information shown on both sides of this form is true and complete to the best of my knowledge and belief

Signature Printed Name Jeff Trlica Title Regulatory Analyst Date 3/10/2022
 E-mail Address jtrlica@taprllc.com

District I
 1625 N. French Dr., Hobbs, NM 88240
 Phone:(575) 393-6161 Fax:(575) 393-0720

District II
 811 S. First St., Artesia, NM 88210
 Phone:(575) 748-1283 Fax:(575) 748-9720

District III
 1000 Rio Brazos Rd., Aztec, NM 87410
 Phone:(505) 334-6178 Fax:(505) 334-6170

District IV
 1220 S. St Francis Dr., Santa Fe, NM 87505
 Phone:(505) 476-3470 Fax:(505) 476-3462

State of New Mexico
Energy, Minerals and Natural Resources
Oil Conservation Division
1220 S. St Francis Dr.
Santa Fe, NM 87505

ACKNOWLEDGMENTS

Action 137671

ACKNOWLEDGMENTS

Operator: TAP ROCK OPERATING, LLC 523 Park Point Drive Golden, CO 80401	OGRID: 372043
	Action Number: 137671
	Action Type: [C-104] Completion Packet (C-104C)

ACKNOWLEDGMENTS

<input checked="" type="checkbox"/>	I hereby certify that the required Water Use Report has been, or will be, submitted for this wells completion.
<input checked="" type="checkbox"/>	I hereby certify that the required FracFocus disclosure has been, or will be, submitted for this wells completion.

District I
 1625 N. French Dr., Hobbs, NM 88240
 Phone:(575) 393-6161 Fax:(575) 393-0720

District II
 811 S. First St., Artesia, NM 88210
 Phone:(575) 748-1283 Fax:(575) 748-9720

District III
 1000 Rio Brazos Rd., Aztec, NM 87410
 Phone:(505) 334-6178 Fax:(505) 334-6170

District IV
 1220 S. St Francis Dr., Santa Fe, NM 87505
 Phone:(505) 476-3470 Fax:(505) 476-3462

State of New Mexico
Energy, Minerals and Natural Resources
Oil Conservation Division
1220 S. St Francis Dr.
Santa Fe, NM 87505

CONDITIONS

Action 137671

CONDITIONS

Operator: TAP ROCK OPERATING, LLC 523 Park Point Drive Golden, CO 80401	OGRID: 372043
	Action Number: 137671
	Action Type: [C-104] Completion Packet (C-104C)

CONDITIONS

Created By	Condition	Condition Date
plmartinez	File 3160-4 Completion Report within 10 days to NMOCD after BLM approval.	4/19/2023