

State of New Mexico
Energy, Minerals and Natural Resources

District I – (575) 393-6161
1625 N. French Dr., Hobbs, NM 88240
District II – (575) 748-1283
811 S. First St., Artesia, NM 88210
District III – (505) 334-6178
1000 Rio Brazos Rd., Aztec, NM 87410
District IV – (505) 476-3460
1220 S. St. Francis Dr., Santa Fe, NM
87505

OIL CONSERVATION DIVISION
1220 South St. Francis Dr.
Santa Fe, NM 87505

WELL API NO. 30-043-20948
5. Indicate Type of Lease STATE <input type="checkbox"/> FEE <input type="checkbox"/> X
6. State Oil & Gas Lease No.
7. Lease Name or Unit Agreement Name L-Bar Ranch
8. Well Number. 001
9. OGRID Number 312351
10. Pool name or Wildcat Wildcat

<p>SUNDRY NOTICES AND REPORTS ON WELLS (DO NOT USE THIS FORM FOR PROPOSALS TO DRILL OR TO DEEPEN OR PLUG BACK TO A DIFFERENT RESERVOIR. USE "APPLICATION FOR PERMIT" (FORM C-101) FOR SUCH PROPOSALS.)</p> <p>1. Type of Well: Oil Well <input type="checkbox"/> Gas Well <input type="checkbox"/> Injection Well</p> <p>2. Name of Operator Travis R. Crawford</p> <p>3. Address of Operator 680 Montana Ave., El Paso, TX 79912 (915) 637-7757</p> <p>4. Well Location Unit Letter <u>H</u> : <u>2095</u> feet from the <u>S</u> line and <u>220</u> feet from the <u>E</u> line Section <u>2</u> Township <u>13N</u> Range <u>4W</u> NMPM Sandoval County</p> <p>11. Elevation (Show whether DR, RKB, RT, GR, etc.)</p>	
---	--

12. Check Appropriate Box to Indicate Nature of Notice, Report or Other Data

NOTICE OF INTENTION TO:

PERFORM REMEDIAL WORK ☐ PLUG AND ABANDON ☒ X
TEMPORARILY ABANDON ☐ CHANGE PLANS ☐
PULL OR ALTER CASING ☐ MULTIPLE COMPL ☐
DOWNHOLE COMMINGLE
CLOSED-LOOP SYSTEM ☐
OTHER: ☐

SUBSEQUENT REPORT OF:

REMEDIAL WORK ☐ ALTERING CASING ☐
COMMENCE DRILLING OPNS. ☐ P AND A ☐
CASING/CEMENT JOB ☐
OTHER: ☐

13. Describe proposed or completed operations. (Clearly state all pertinent details, and give pertinent dates, including estimated date of starting any proposed work). SEE RULE 19.15.7.14 NMAC. For Multiple Completions: Attach wellbore diagram of proposed completion or recompletion.


WellDone NM LLC, intends to P&A this well as agent for New Mexico Game and Fish Division.
Notify NMOCD to witness plugging operations.

See attached P&A procedure for this well.

SIGNATURE  TITLE Chairman, Well Done Foundation, Inc. DATE 3-28-2023

Type or print name Curtis Shuck, as agent for Travis R. Crawford E-mail address: curtis@welldonefoundation.com
PHONE: 1(406) 460-0903

For State Use Only

APPROVED BY:  TITLE Petroleum Specialist DATE 4/19/23

Conditions of Approval (if any):

APPROVED

Please Perf& Sqz 9 5/8" Shoe as
the primary plugging method.
Circulate to surface.

PLUG AND ABANDONMENT PROCEDURE

L-Bar Ranch #1

Wildcat

2095' FSL, 220' FEL, Section 2, T13N, R4W, Sandoval County, NM

API 30-043-20948

All cement volumes use 100% excess outside pipe and 50' excess inside pipe, whichever is greater. The stabilizing wellbore fluid will be 8.3 ppg, and Corrosion Inhibitor sufficient to balance all exposed formation pressures. All cement will be Class G, mixed at 15.8 ppg with a 1.15 cf/sx yield.

1. This project will use an A-Plus steel tank to handle waste fluids circulated from the well and cement wash up.
2. Comply with all NMOCD, BLM, and Operator safety regulations. MOL and RU daylight pulling unit. Conduct safety meeting for all personnel on location. Record casing, tubing and bradenhead pressures. NU relief line and blow down well. Kill well with water as necessary and at least pump tubing capacity of water down the tubing. ND wellhead and NU BOP. Function test BOP.

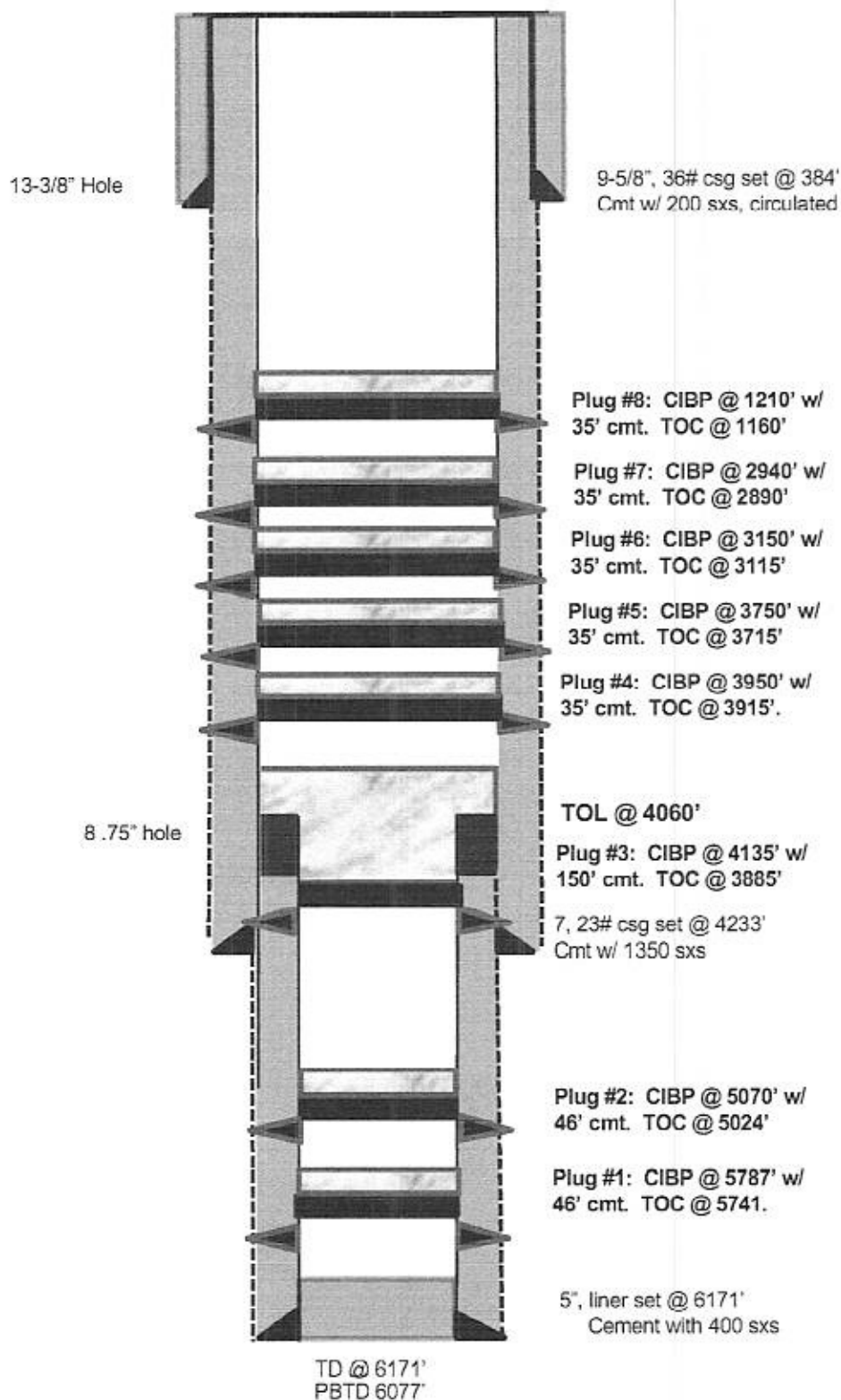
NOTE: This was plugged back to 1160' December 2000 per approved Sundry dated March 2004.

RIH and tag existing plug. Pressure test casing to 800#. If casing does not test then may need to modify Surface plug.

3. **Surface Plug (9-5/8" Surface casing shoe and Surface, 434' - Surface):** Attempt to pressure test the bradenhead annulus to 300 PSI; note the volume to load. If the BH annulus holds pressure, then establish circulation out casing valve with water. Mix approximately 86 sxs cement and spot a balanced plug from 434' to surface, circulate good cement out casing valve. TOH and LD tubing. Shut well in and WOC. If the BH annulus does not test, then perforate at the appropriate depth and attempt to circulate cement to surface filling the casing and annulus from the squeeze holes to surface. Shut in well and WOC.
4. ND cementing valves and cut off wellhead. Fill annuli with cement as necessary. Install P&A marker to comply with regulations. Record GPS coordinate for P&A marker on tower report. Photograph P&A marker in place. RD, MOL and cut off anchors. Restore location per BLM stipulations.

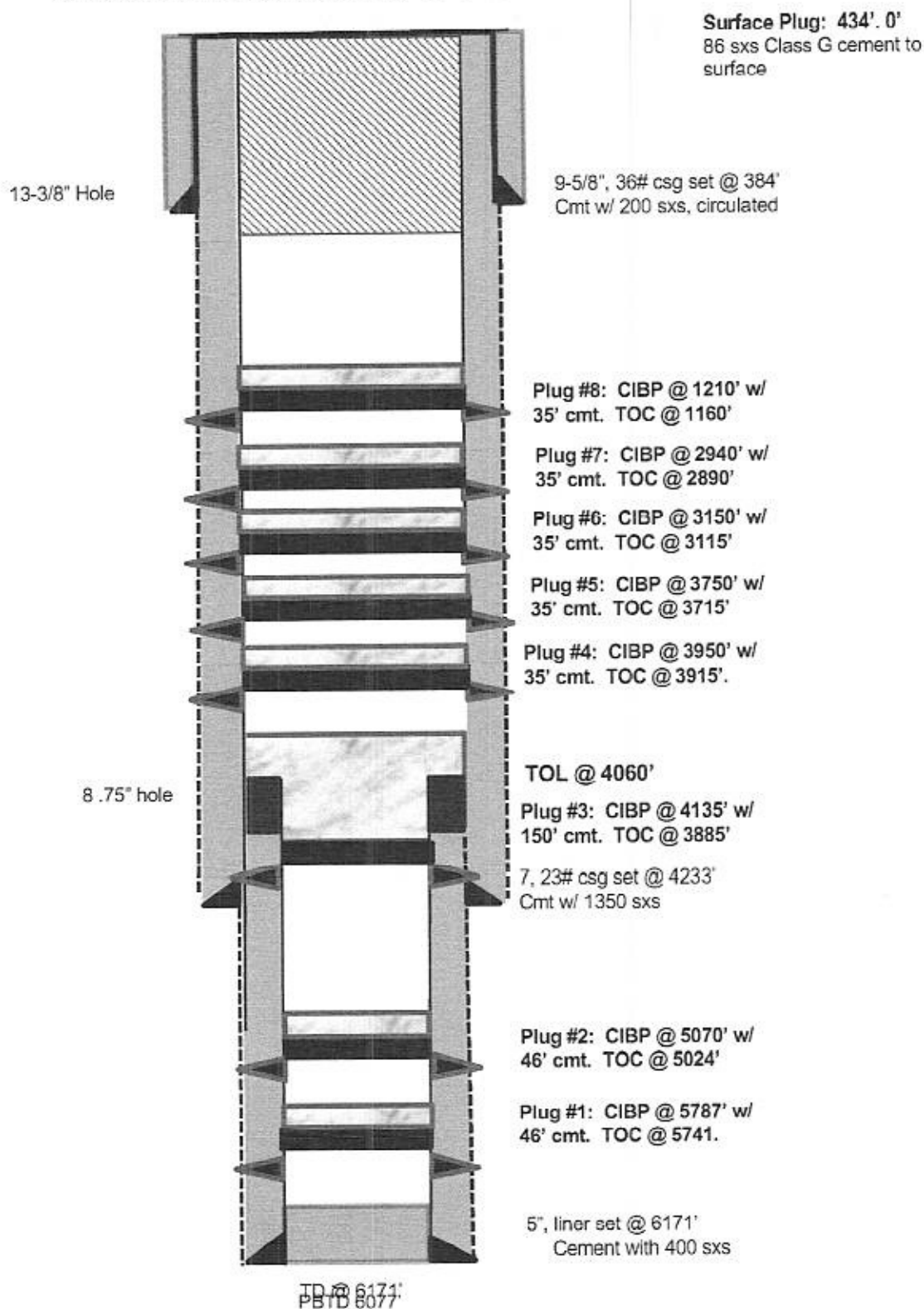
L-Bar Ranch #1

Current WBD

2095' FSL & 200' FEL, Section 2, T13N, R4W
Sandoval County, NM, API# 30-043-20948

L-Bar Ranch #1**Proposed P&A**

2095' FSL & 200' FEL, Section 2, T13N, R4W
Sandoval County, NM, API# 30-043-20948



District I
1625 N. French Dr., Hobbs, NM 88240
Phone:(575) 393-6161 Fax:(575) 393-0720
District II
811 S. First St., Artesia, NM 88210
Phone:(575) 748-1283 Fax:(575) 748-9720
District III
1000 Rio Brazos Rd., Aztec, NM 87410
Phone:(505) 334-6178 Fax:(505) 334-6170
District IV
1220 S. St Francis Dr., Santa Fe, NM 87505
Phone:(505) 476-3470 Fax:(505) 476-3462

State of New Mexico
Energy, Minerals and Natural Resources
Oil Conservation Division
1220 S. St Francis Dr.
Santa Fe, NM 87505

CONDITIONS

Action 203574

CONDITIONS

Operator: A-PLUS WELL SERVICE, INC. P.O. Box 1979 Farmington, NM 87499	OGRID: 370317
	Action Number: 203574
	Action Type: [C-103] NOI Plug & Abandon (C-103F)

CONDITIONS

Created By	Condition	Condition Date
john.harrison	Perf & Sqz surf csg shoe	4/19/2023